

# V&V Reference Report

## L2 ASCDS Version : 8.4.3

Observation 12668 - L2 Version 2  
Chandra X-Ray Center

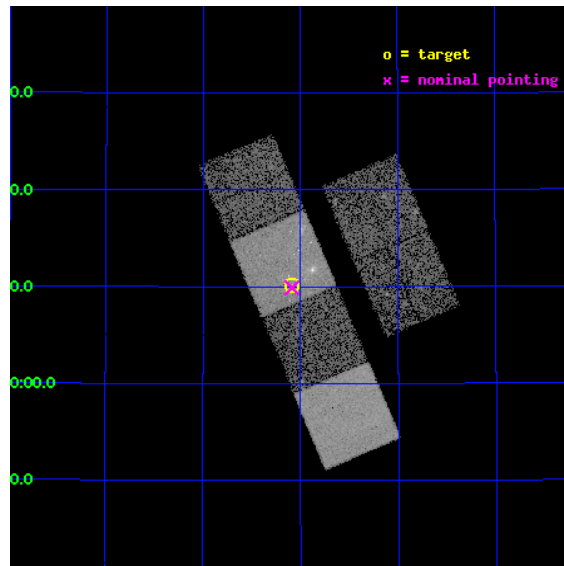
L2 Processing Date : Mar 18 2012

## Contents

<b>1</b>	<b>Front</b>	<b>2</b>
<b>2</b>	<b>OBI</b>	<b>3</b>
2.1	OBI . . . . .	3
2.1.1	Images . . . . .	3
2.1.2	Bias . . . . .	3
2.1.3	Parameters . . . . .	4
2.1.4	Events . . . . .	4
2.2	Compared Parameters . . . . .	5
2.3	Aspect . . . . .	6
2.4	Star Slots . . . . .	9
2.4.1	Slot 3 . . . . .	9
2.4.2	Slot 4 . . . . .	10
2.4.3	Slot 5 . . . . .	11
2.4.4	Slot 6 . . . . .	12
2.4.5	Slot 7 . . . . .	13
2.5	FID Slots . . . . .	14
2.5.1	Slot 0 . . . . .	14
2.5.2	Slot 1 . . . . .	15
2.5.3	Slot 2 . . . . .	16
<b>A</b>	<b>Summary</b>	<b>17</b>
A.1	Status . . . . .	17
A.2	Comments . . . . .	17

# 1 Front

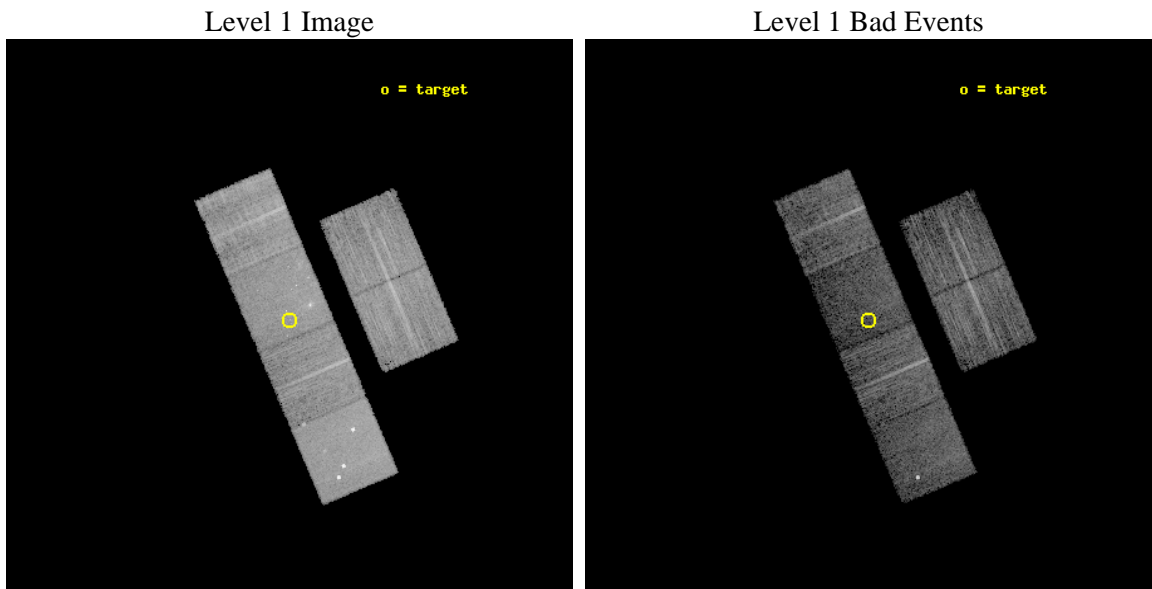
seq_num	501501	Sequence number
obs_id	12668	Observation id
title	The Energetics and Environments of Type Ibc Supernovae	Proposal ti
observer	Prof. Alicia Soderberg	Principal investigator
object	SN2011dh	Source name
dtcycle	0	&#160
cycle	P	events from which exps? Prim/Second/Both
ra_targ	202.521333	Observer's specified target RA [deg]
dec_targ	47.169667	Observer's specified target Dec [deg]
ra_nom	202.52244738587	Nominal RA [deg]
dec_nom	47.164828645593	Nominal Dec [deg]
roll_nom	246.89787379441	Nominal Roll [deg]
revision	2	Processing version of data
ontime	10118.052288413	Sum of GTIs [s]
livetime	9989.9314179775	Livetime [s]
ontime2	10118.093328416	Sum of GTIs [s]
ontime3	10117.929168403	Sum of GTIs [s]
ontime5	10118.01124841	Sum of GTIs [s]
ontime6	10117.970208406	Sum of GTIs [s]
ontime7	10118.052288413	Sum of GTIs [s]
ontime8	10117.8881284	Sum of GTIs [s]
l2events	97249	Number of level 2 events



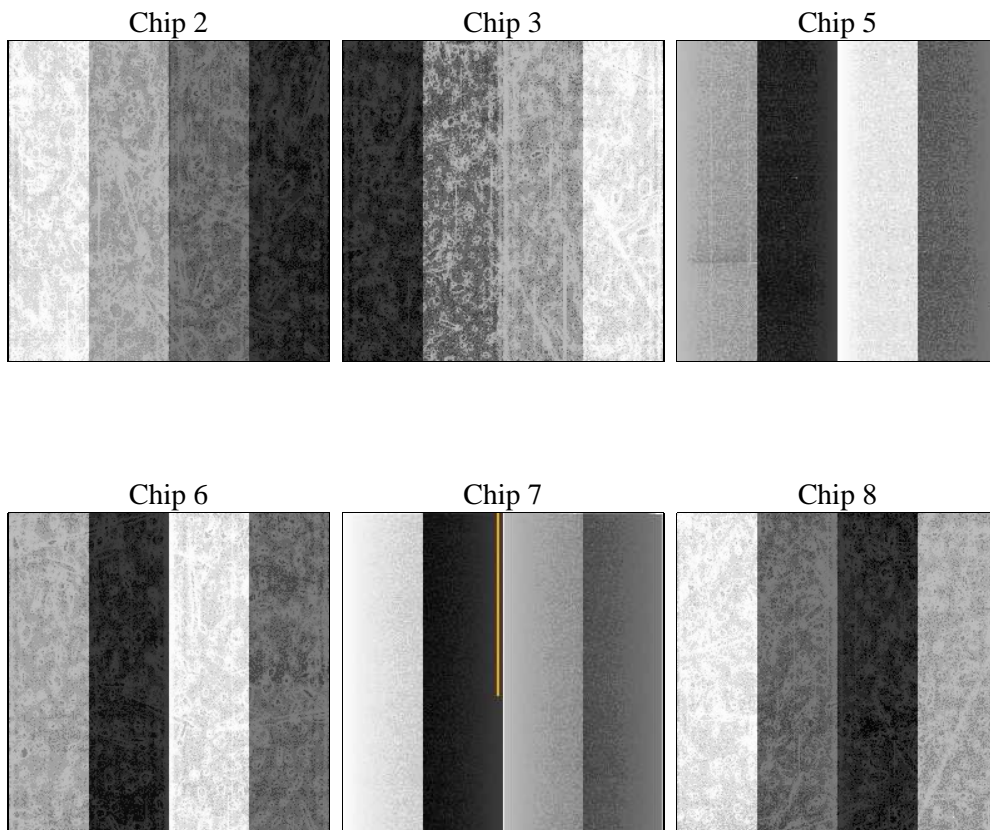
## 2 OBI

### 2.1 OBI

#### 2.1.1 Images



#### 2.1.2 Bias



### 2.1.3 Parameters

obi_num	0	Obi number	sched_exp_time	10062.031000	[s] Scheduled observation exposure time
ascdsver	8.4.3	Processing system revision	ontime	10118.052288413	Sum of GTIs [s]
caldbver	4.4.8	&#160	ontime2	10118.093328416	Sum of GTIs [s]
date	2012-03-18T18:17:00	Date and time of file creation	ontime3	10117.929168403	Sum of GTIs [s]
revision	2	Processing version of data	ontime5	10118.01124841	Sum of GTIs [s]
			ontime6	10117.970208406	Sum of GTIs [s]
			ontime7	10118.052288413	Sum of GTIs [s]
			ontime8	10117.8881284	Sum of GTIs [s]
			l1events	401331	Number of level 1 events

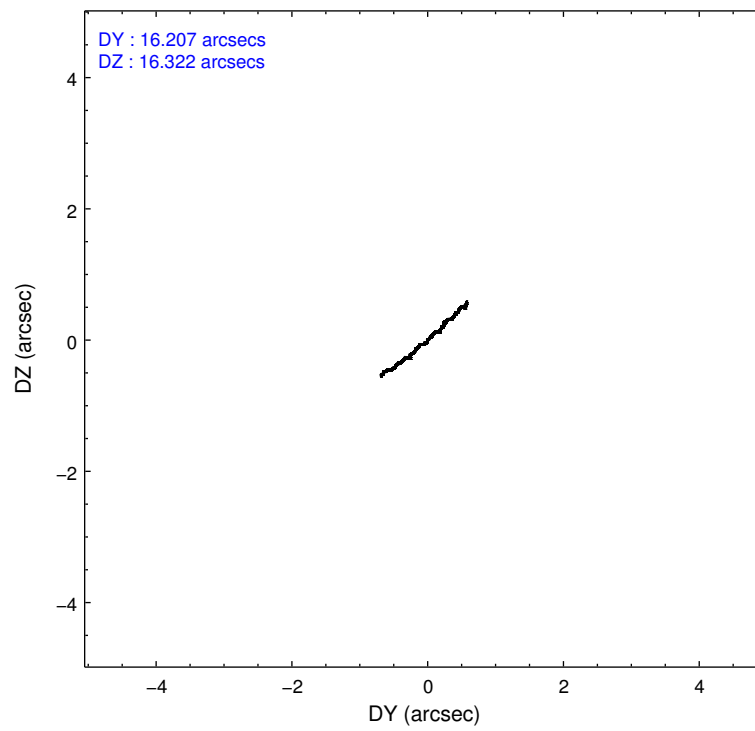
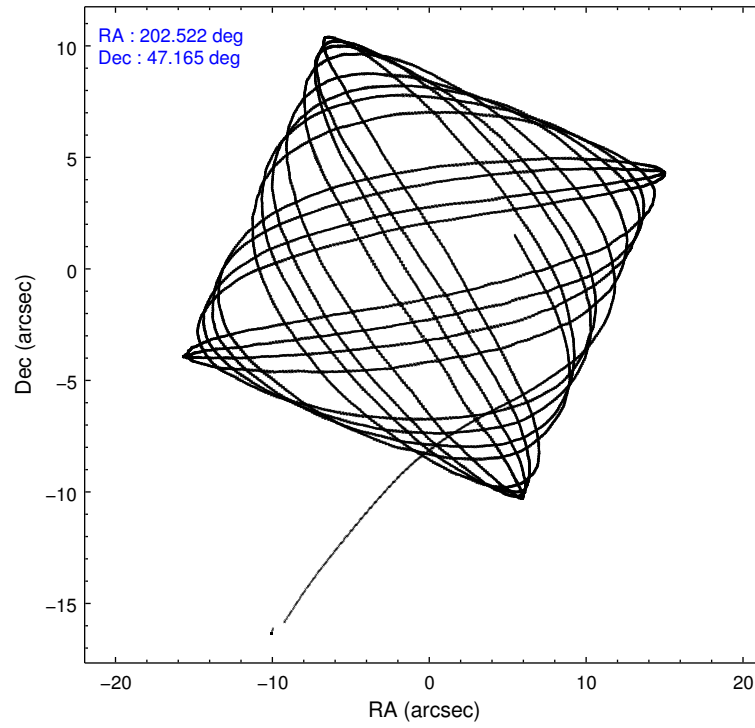
### 2.1.4 Events

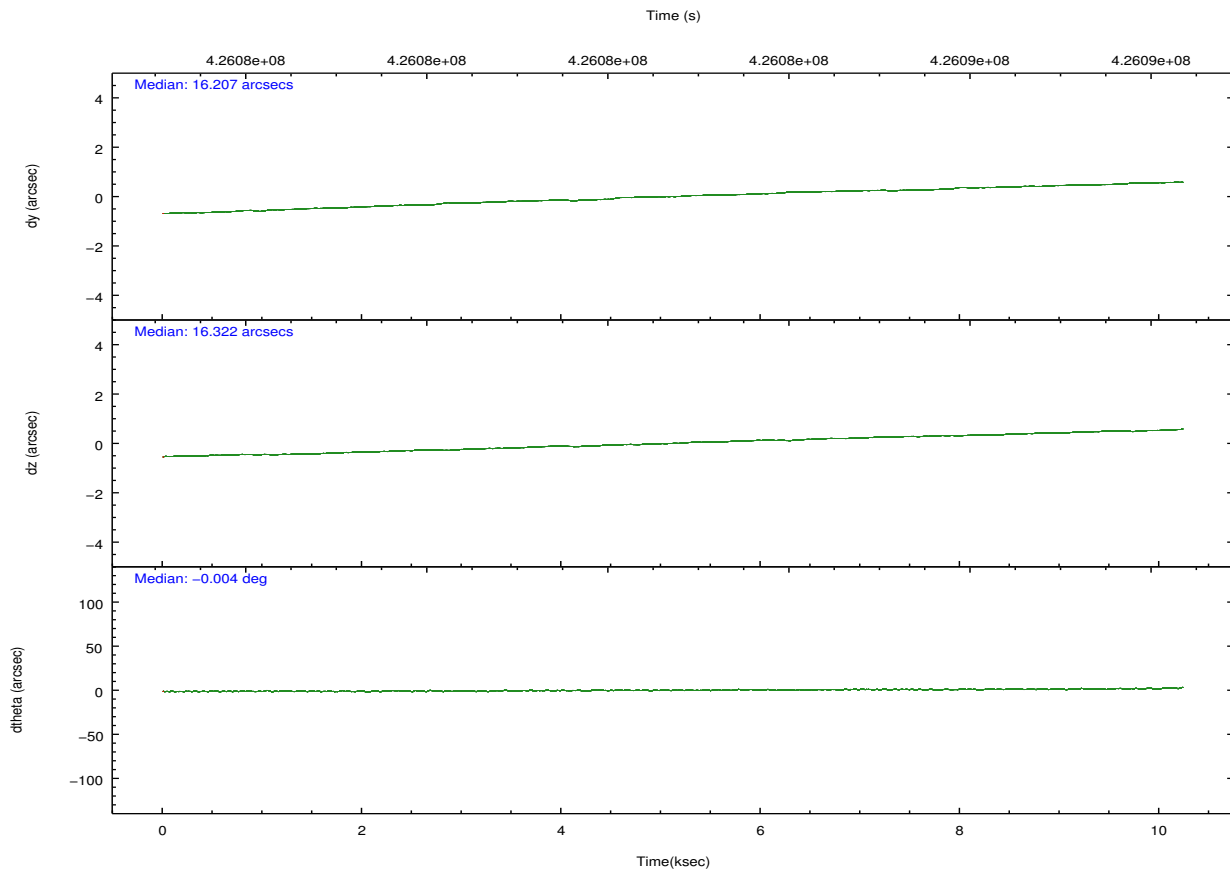
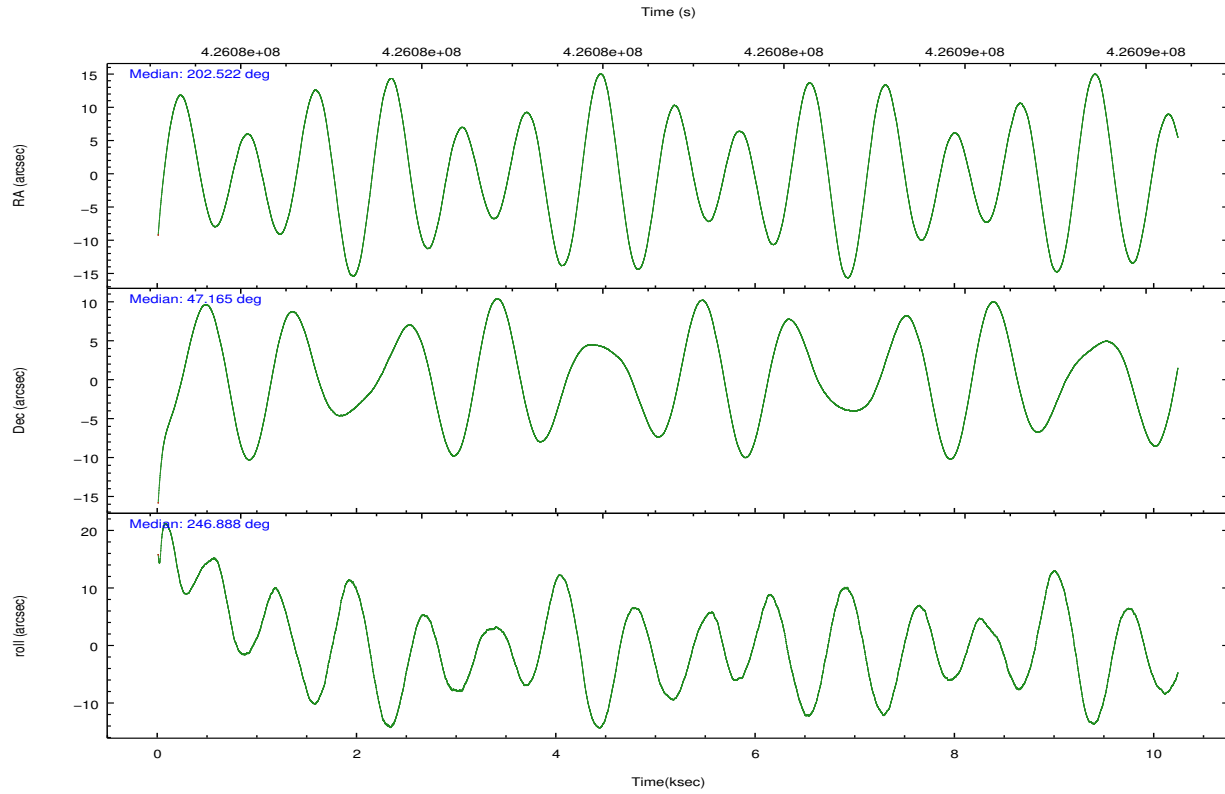
	ccd 2	ccd 3	ccd 5	ccd 6	ccd 7	ccd 8		ccd 2	ccd 3	ccd 5	ccd 6	ccd 7	ccd 8
level 1 events	61305	55323	88254	55316	68099	73034	grade 0 events	2510	2405	8627	2376	4845	5692
rejected events	54821	49070	40454	48786	32680	53042		4%	4%	9%	4%	7%	7%
rejected %	89%	88%	45%	88%	47%	72%	grade 1 events	48	27	222	30	95	62
								0%	0%	0%	0%	0%	0%
							grade 2 events	1531	1345	14042	1473	7809	4866
								2%	2%	15%	2%	11%	6%
							grade 3 events	609	643	1717	659	3452	2209
								0%	1%	1%	1%	5%	3%
							grade 4 events	665	653	1558	677	3286	2033
								1%	1%	1%	1%	4%	2%
							grade 5 events	1930	2273	7099	2380	6697	3484
								3%	4%	8%	4%	9%	4%
							grade 6 events	1170	1207	21870	1347	16034	5193
								1%	2%	24%	2%	23%	7%
							grade 7 events	52842	46770	33119	46374	25881	49495
								86%	84%	37%	83%	38%	67%

## 2.2 Compared Parameters

Parameter	Planned	Actual	Parameter	Planned	Actual
Instrument	ACIS	ACIS	Obspar format version number	7	7
Detector	ACIS-235678	ACIS-235678	Obspar file type	PREDICTED	ACTUAL
Grating	NONE	NONE	Obspar update status	NONE	UPDATED
Data mode	VFAINT	VFAINT	CCD I0 on	N	N
Observation mode	POINTING	POINTING	CCD I1 on	N	N
[deg] Pointing RA	202.517024	202.5224473858668	CCD I2 on	O1	Y
[deg] Pointing Dec	47.191970	47.16482864559326	CCD I3 on	O2	Y
[deg] Pointing Roll	246.745258	246.8978737944085	CCD S0 on	N	N
[mm] SIM focus pos	-0.684267	-0.6828225247311905	CCD S1 on	Y	Y
[mm] SIM defocus	0	0.001444936568705701	CCD S2 on	Y	Y
[mm] SIM translation stage pos	-190.132523	-190.145094680475	CCD S3 on	Y	Y
[mm] SIM translation stage offset	0	0.01257209746719923	CCD S4 on	Y	Y
[s] Observation start time (MET)	426077782.184000	426076317.15695	CCD S5 on	N	N
Observation start date	2011-07-03T10:55:16	2011-07-03T10:31:57	Number of optional ACIS chips dropped	0	0
[s] Observation end time (MET)	426087844.184000	426088070.32006	On-chip summing requested	N	N
Observation end date	2011-07-03T13:42:58	2011-07-03T13:47:50	Subarray requested	NONE	NONE
Read mode	TIMED	TIMED	Alternating exposures requested	N	N
			[s] Primary exposure time	0.000000	3.2

## 2.3 Aspect



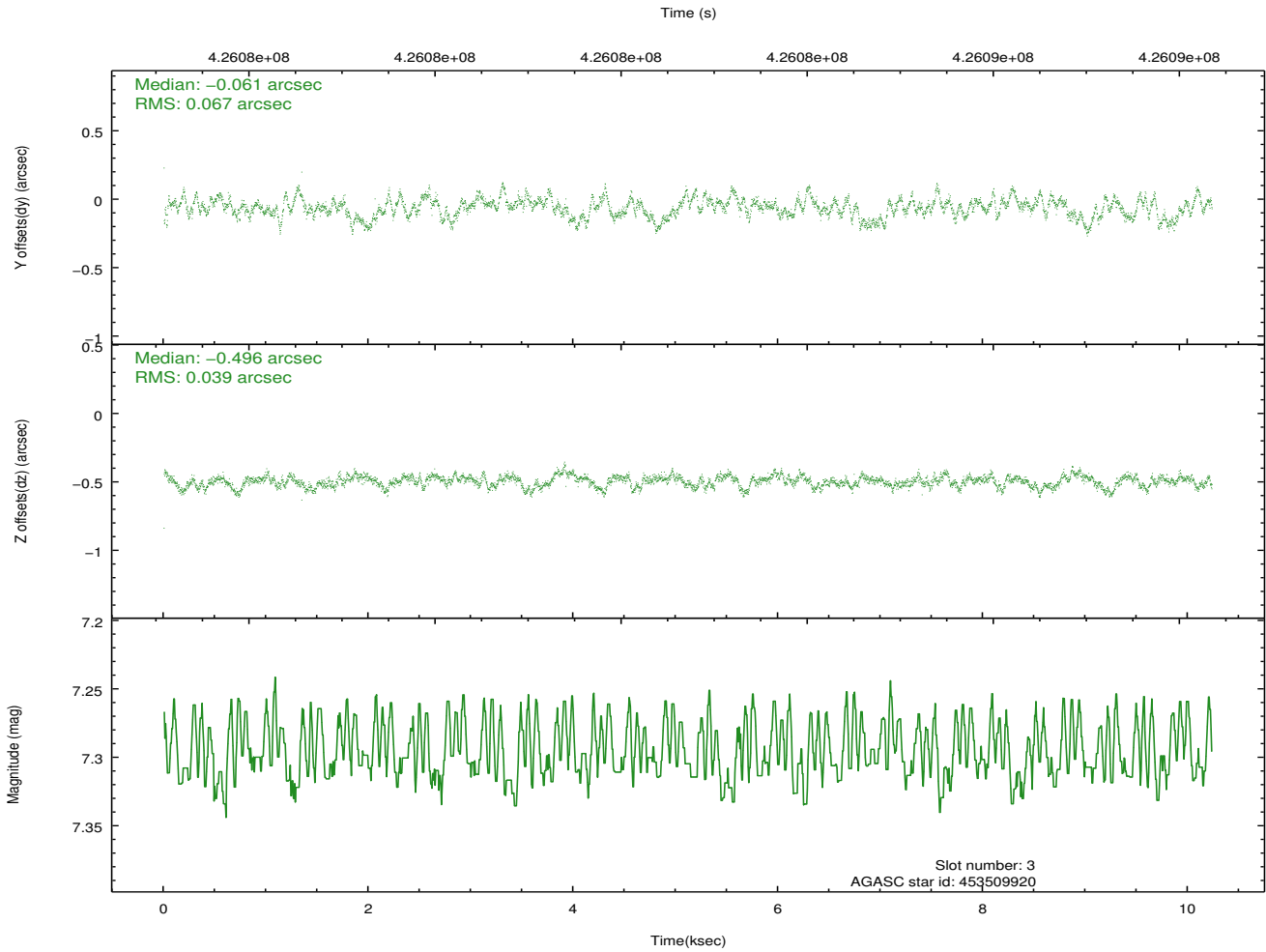
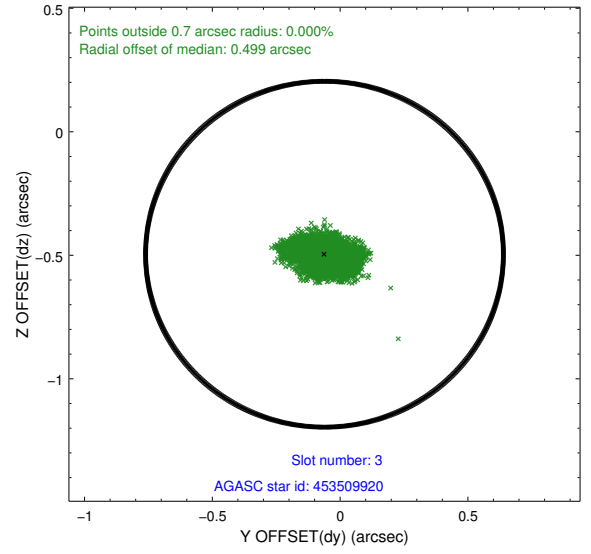
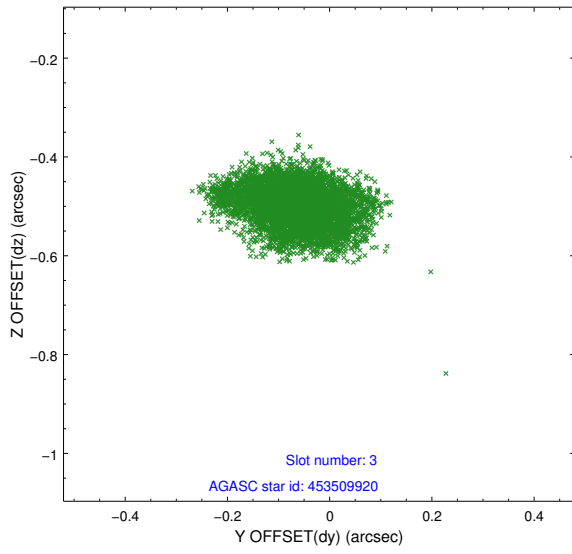


### Slot Statistics

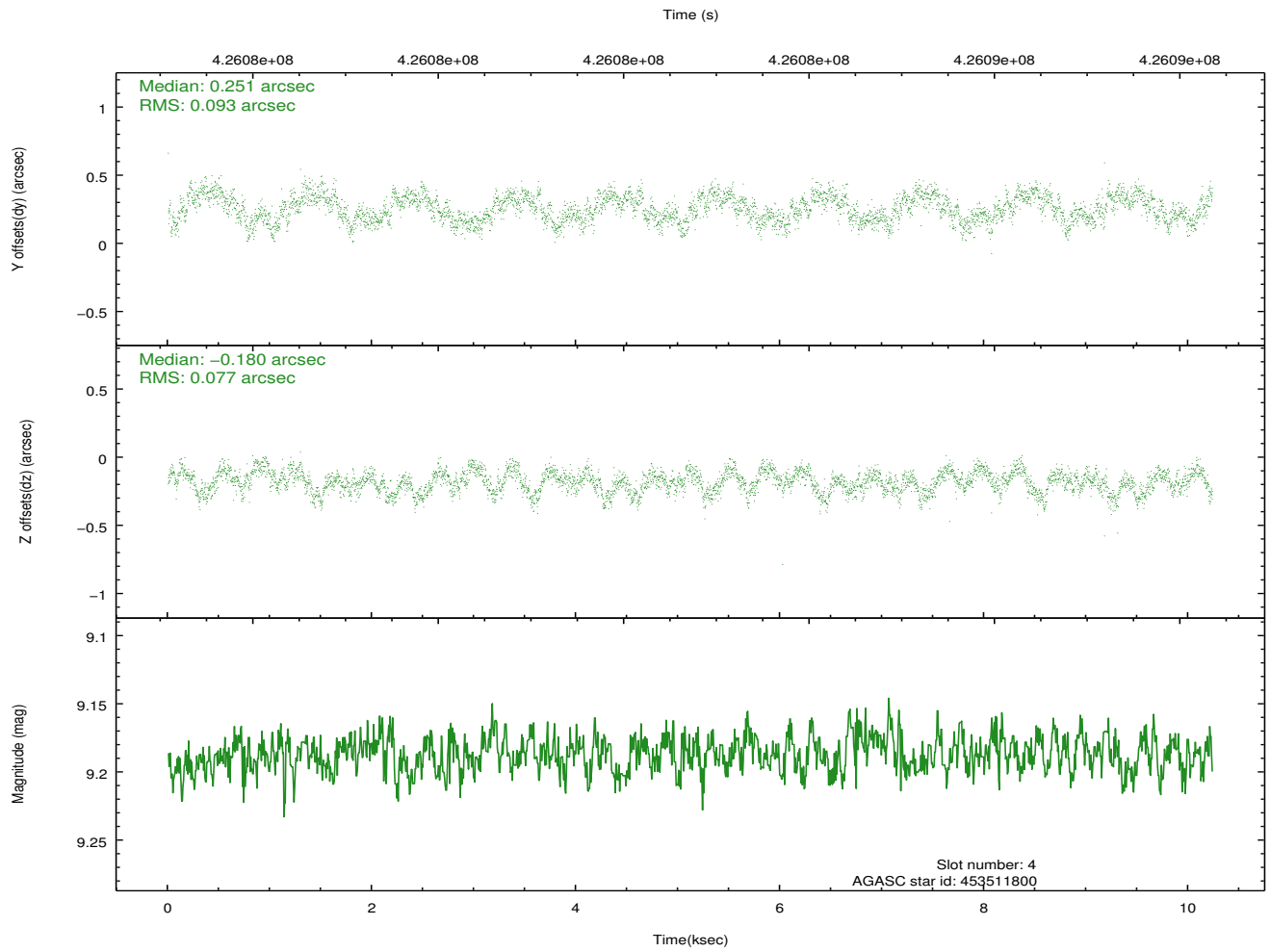
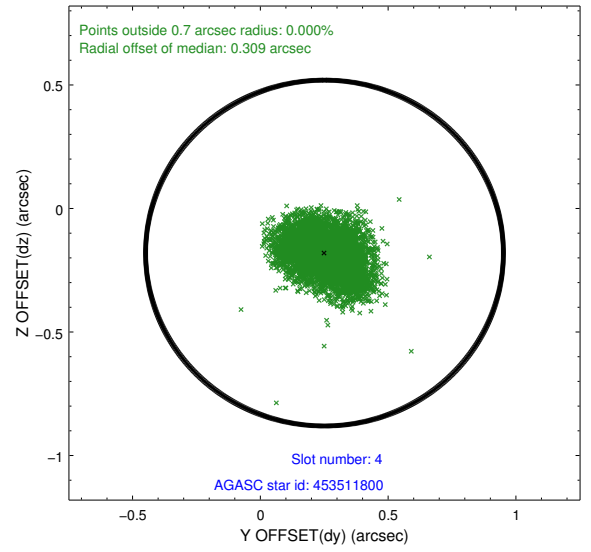
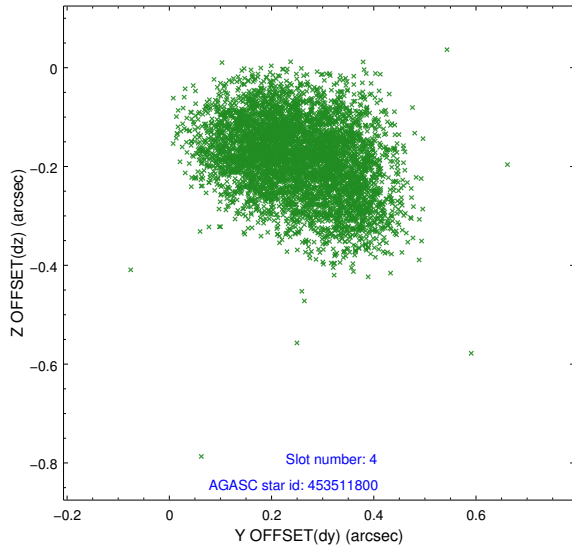
slot	status	id	mag	n_pts	med_dy	med_dz	dr1	dr2	ra	dec	mean_y	mean_z
0	FID	ACIS-S-2	6.90	2496	-0.089	-0.021	0.013	0.019	0.000000	0.000000	-769.28	-1737.66
1	FID	ACIS-S-4	6.98	2496	0.186	0.048	0.007	0.025	0.000000	0.000000	2144.04	170.36
2	FID	ACIS-S-5	7.01	2497	-0.131	-0.020	0.013	0.020	0.000000	0.000000	-1821.50	164.55
3	GUIDE	453509920	7.30	4993	-0.061	-0.496	0.082	0.140	202.256826	47.847140	-1919.33	-1509.99
4	GUIDE	453511800	9.19	4992	0.251	-0.180	0.132	0.201	201.825327	46.820165	1895.84	-1040.92
5	GUIDE	453515000	10.24	4985	-0.177	0.076	0.265	0.420	201.599486	47.136818	1058.72	-1991.78
6	GUIDE	453904608	7.38	4993	-0.073	0.359	0.102	0.154	202.983748	47.234418	-593.76	986.46
7	GUIDE	454303504	9.71	4978	0.028	0.236	0.127	0.205	202.757470	47.708424	-1938.51	-199.33

## 2.4 Star Slots

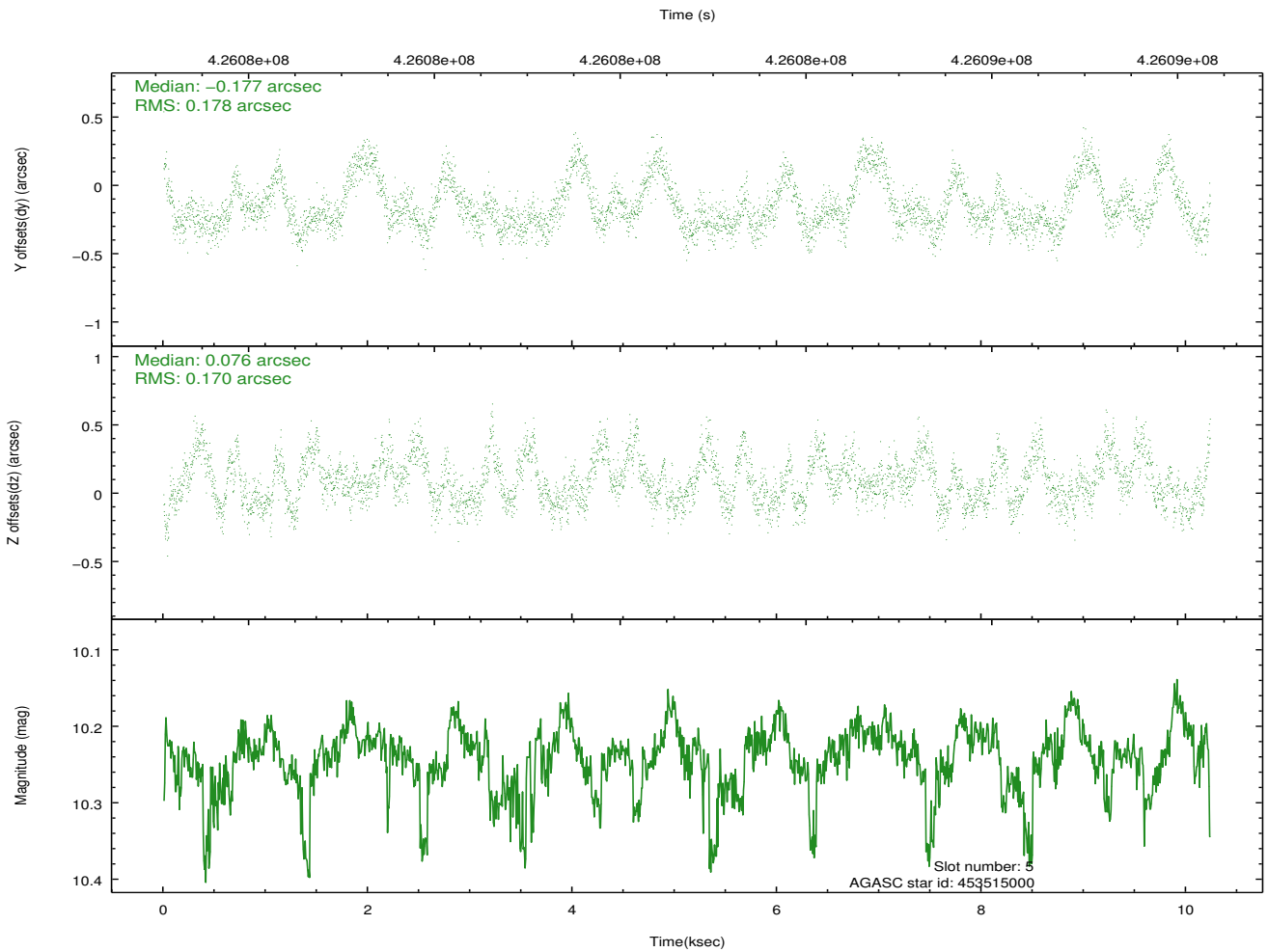
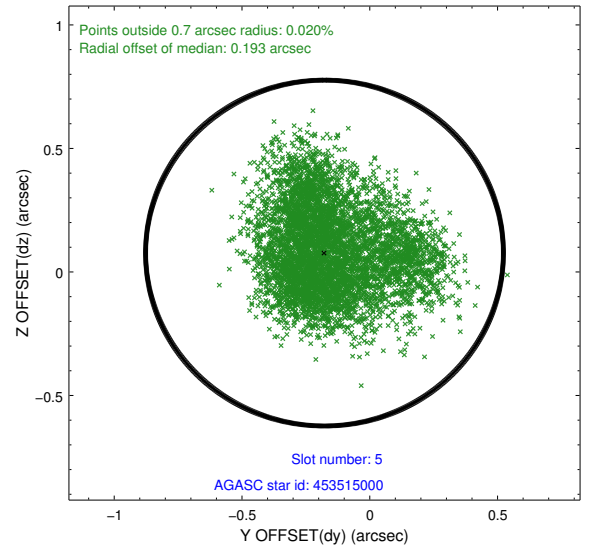
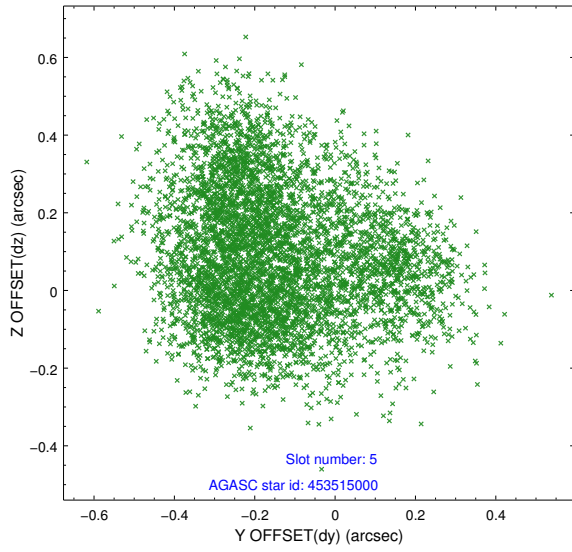
### 2.4.1 Slot 3



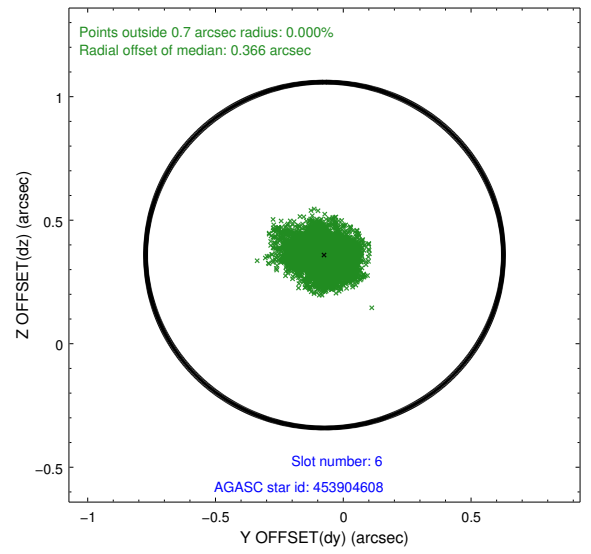
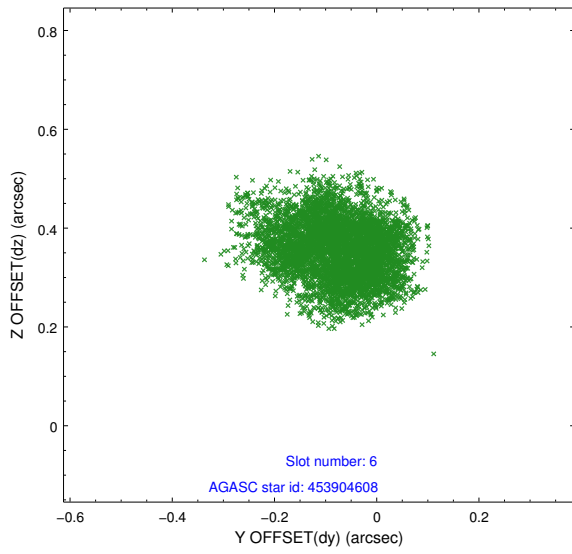
## 2.4.2 Slot 4



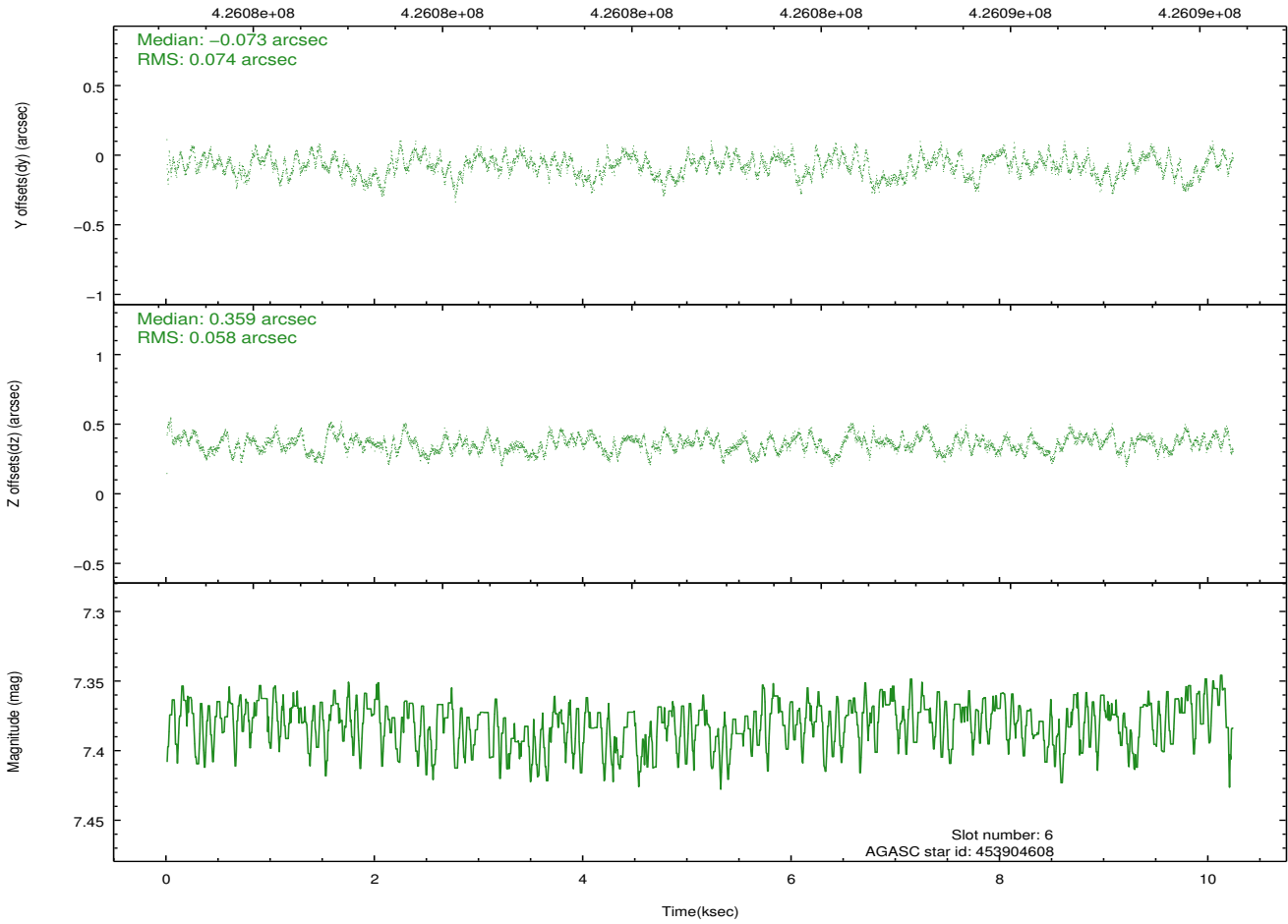
### 2.4.3 Slot 5



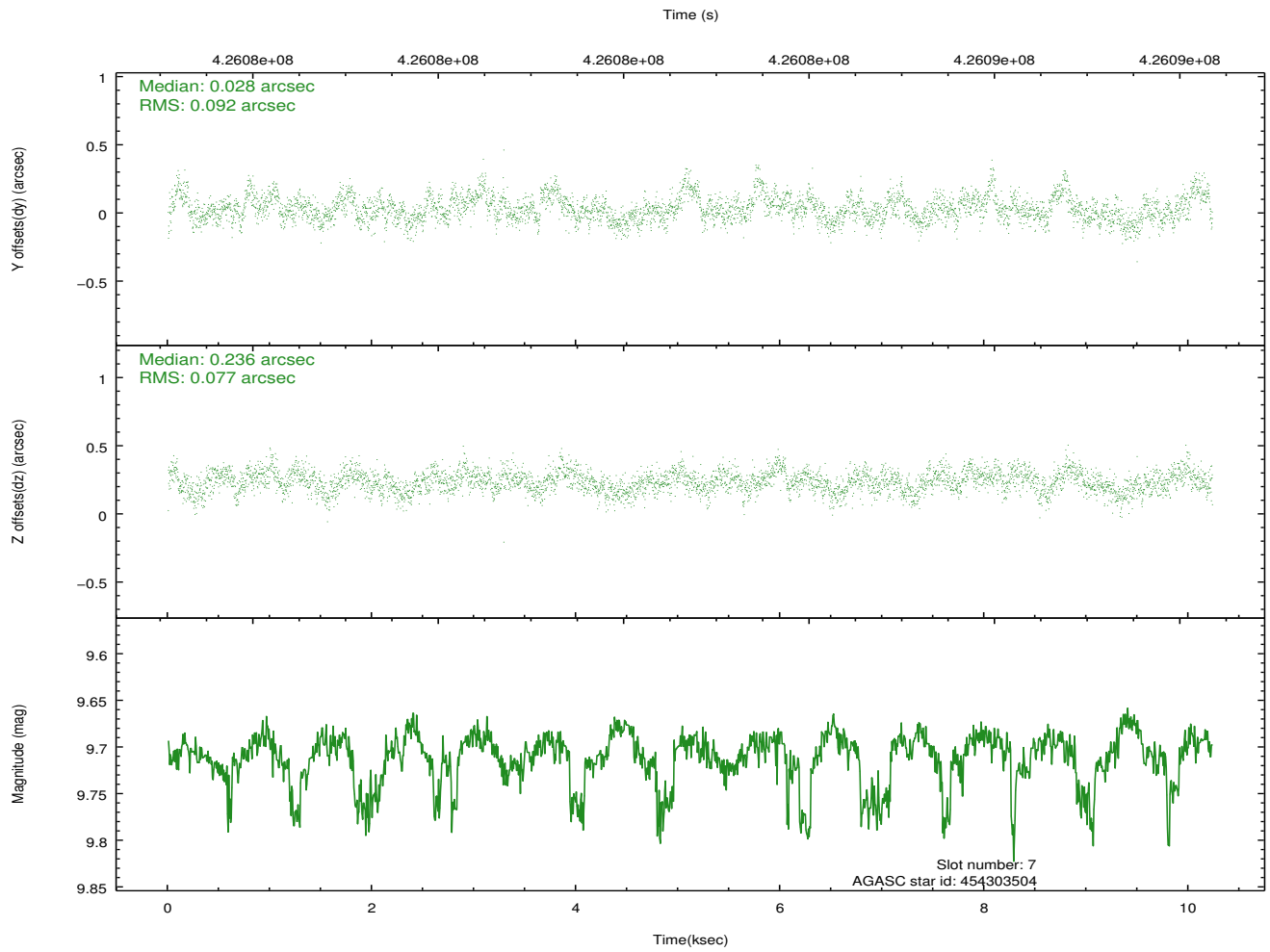
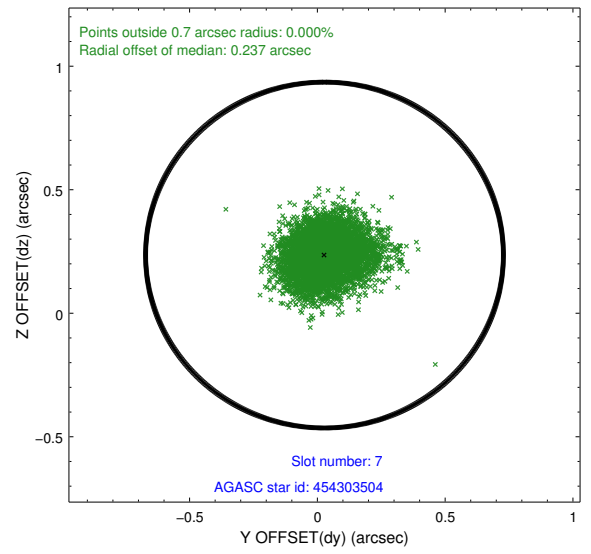
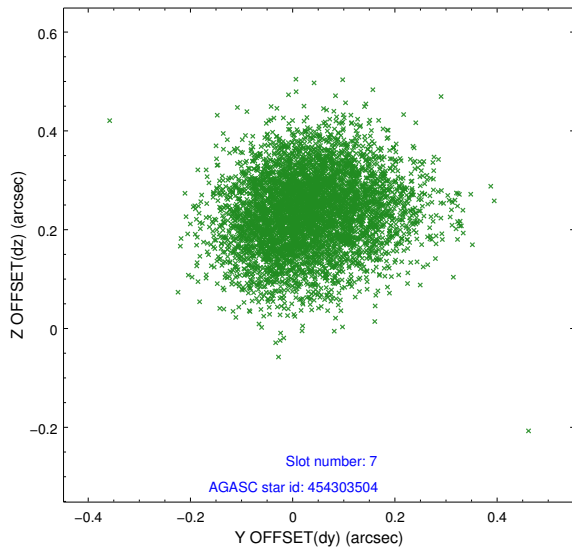
### 2.4.4 Slot 6



Time (s)

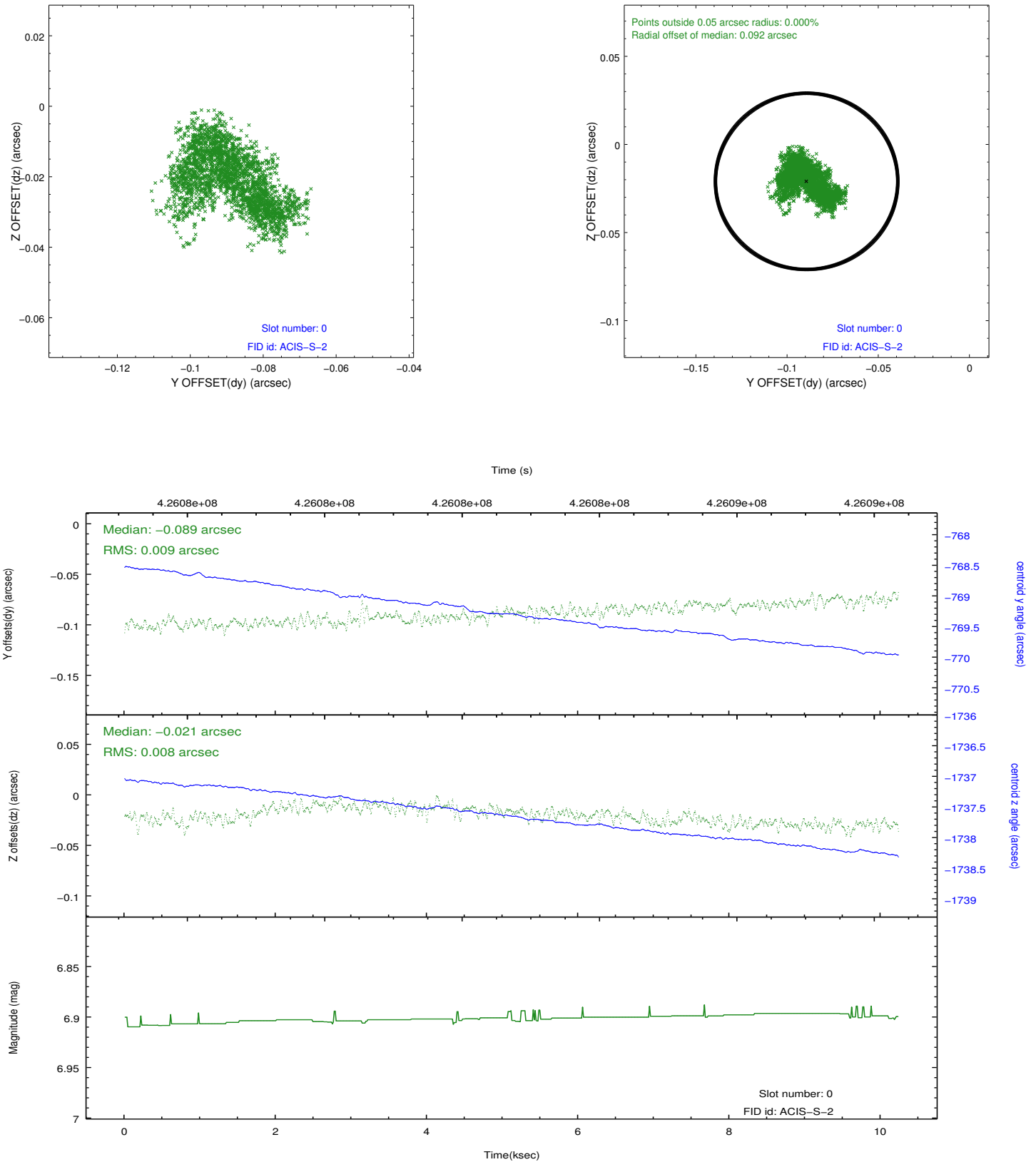


### 2.4.5 Slot 7

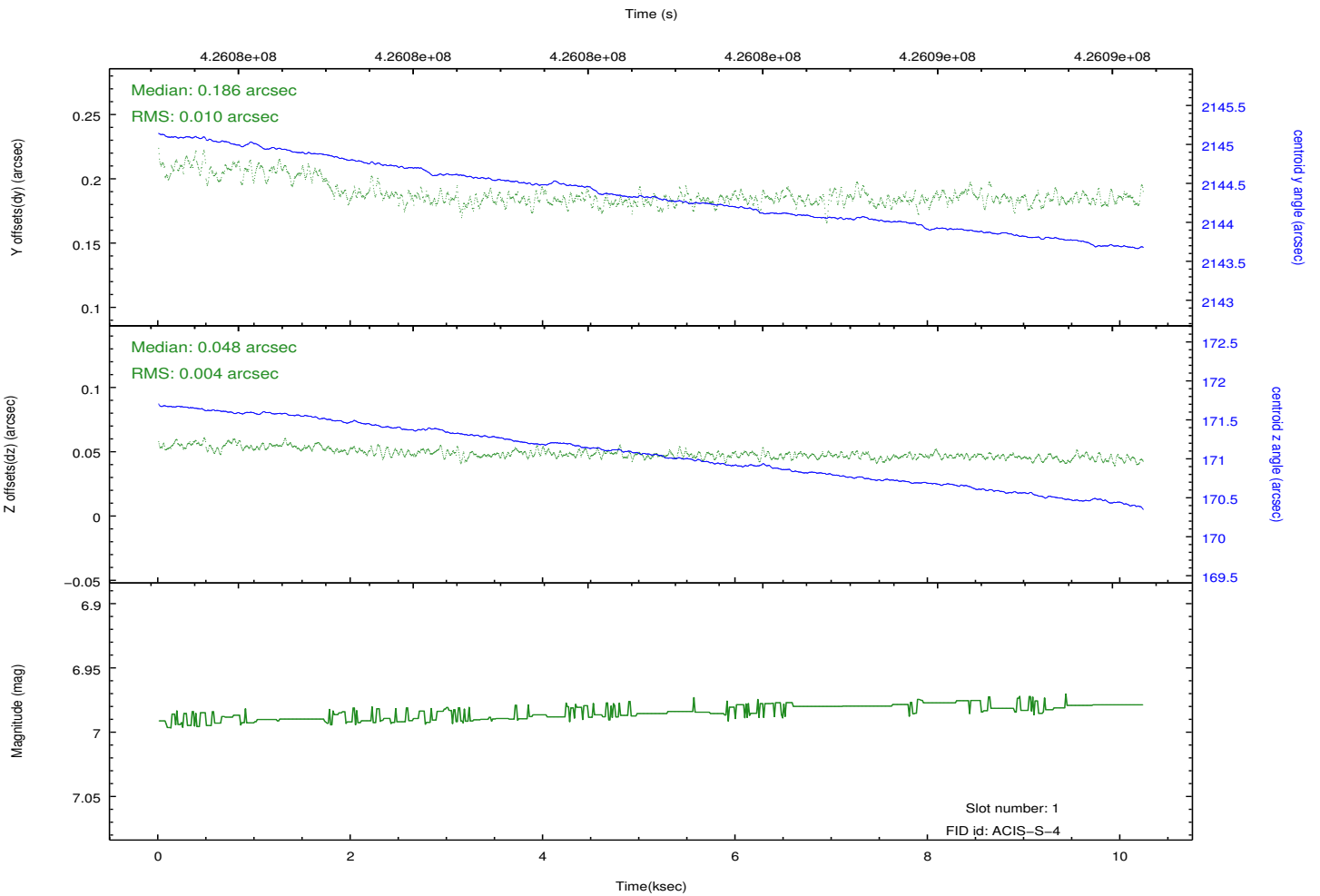
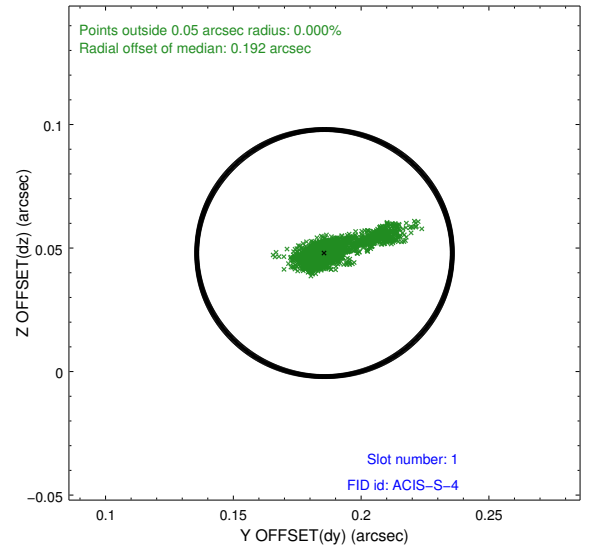
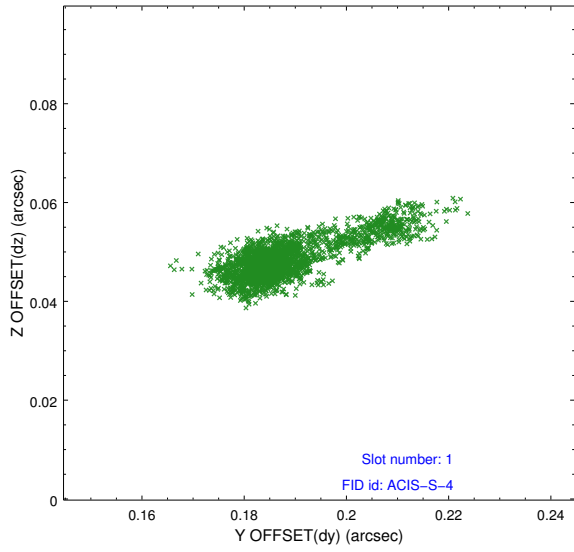


## 2.5 FID Slots

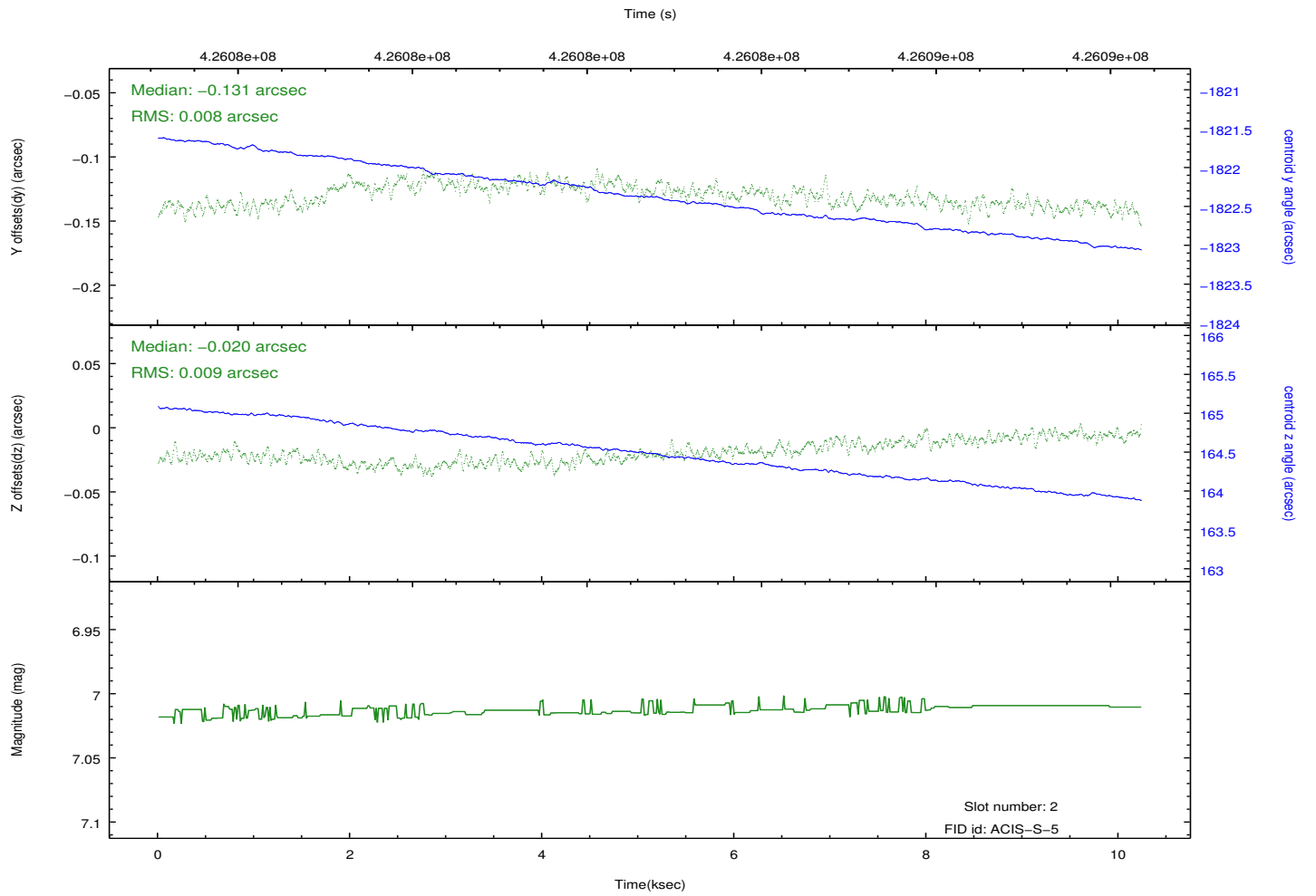
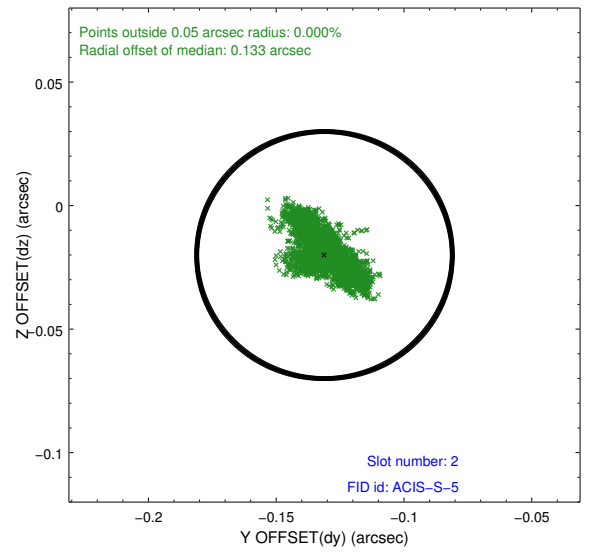
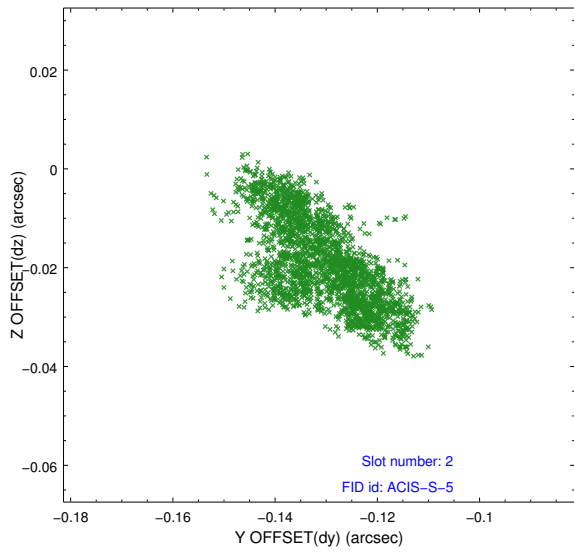
### 2.5.1 Slot 0



## 2.5.2 Slot 1



### 2.5.3 Slot 2



# A Summary

## A.1 Status

V&V Scientist	Jen Lauer
V&V Date (YYYY-MM-DD)	2012.03.20
V&V Edition	1
V&V Disposition and Status	OK
V&V Charge Time	10.118052281499

## A.2 Comments