

# V&V Reference Report

## L2 ASCDS Version : 8.2.1

Observation 1298 - L2 Version 3  
Chandra X-Ray Center

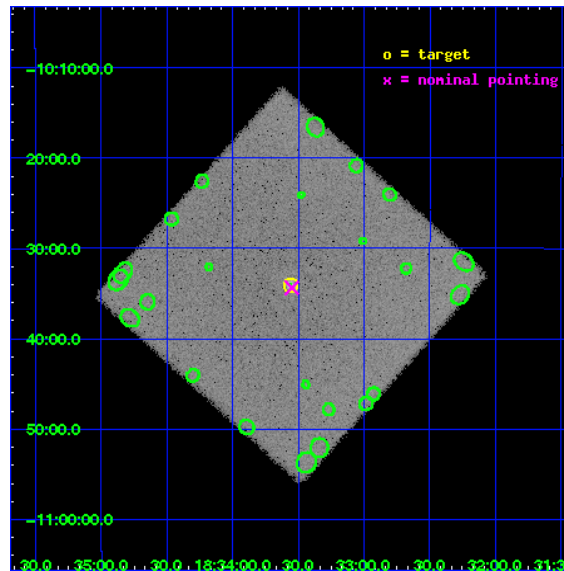
L2 Processing Date : Jan 12 2010

## Contents

<b>1</b>	<b>Front</b>	<b>2</b>
<b>2</b>	<b>OBI</b>	<b>3</b>
2.1	OBI . . . . .	3
2.1.1	Images . . . . .	3
2.1.2	Parameters . . . . .	4
2.1.3	Events . . . . .	4
2.2	Compared Parameters . . . . .	5
2.3	Aspect . . . . .	6
2.4	Star Slots . . . . .	9
2.4.1	Slot 3 . . . . .	9
2.4.2	Slot 4 . . . . .	10
2.4.3	Slot 5 . . . . .	11
2.4.4	Slot 6 . . . . .	12
2.4.5	Slot 7 . . . . .	13
2.5	FID Slots . . . . .	14
2.5.1	Slot 0 . . . . .	14
2.5.2	Slot 1 . . . . .	15
2.5.3	Slot 2 . . . . .	16
<b>3</b>	<b>Point Sources</b>	<b>17</b>
<b>A</b>	<b>Summary</b>	<b>18</b>
A.1	Status . . . . .	18
A.2	Comments . . . . .	18

# 1 Front

seq_num	580248	Sequence number
obs_id	1298	Observation id
title	HRC RESPONSE TO CONTINUUM SOURCE.	Proposal title
observer	Dr. CXC Calibration	Principal investigator
object	G21.5-0.9 [HRC-I, Offsets=0,0,0]	Source name
ra_targ	278.389583	Observer's specified target RA
dec_targ	-10.568528	Observer's specified target Dec
ra_nom	278.38717729039	Nominal RA
dec_nom	-10.572966373813	Nominal Dec
roll_nom	267.02757358786	Nominal Roll
revision	3	Processing version of data
ontime	7258.4096358046	[s]
livetime	7196.132727879	Ontime multiplied by DTCOR
l2events	249617	Number of level 2 events

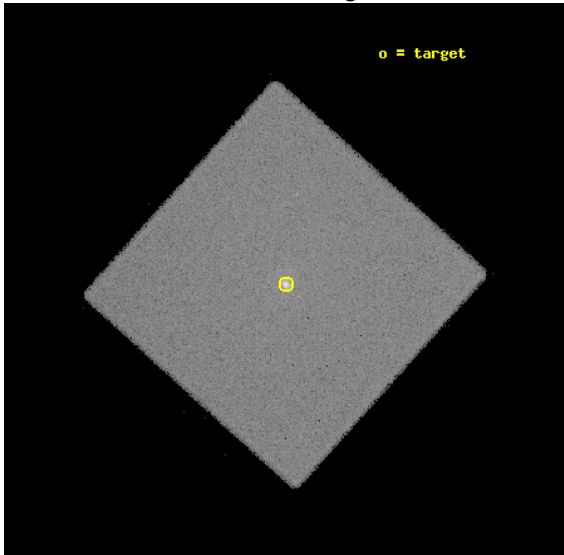


## 2 OBI

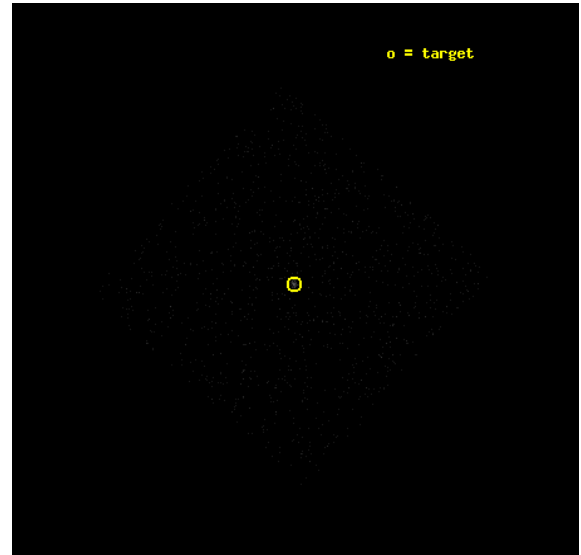
### 2.1 OBI

#### 2.1.1 Images

Level 1 Image



Level 1 Bad Events



## 2.1.2 Parameters

obi_num	0	Obi number	sched_exp_time	6000.000000	Scheduled observation exposure time
ascdsver	8.2.1	Processing system revision	ontime	7260.3315106854	[s]
caldbver	4.1.5	&#160	l1events	455910	Number of level 1 events
date	2010-01-13T02:59:05	Date and time of file creation			
revision	3	Processing version of data			

## 2.1.3 Events

### Level 1 Events

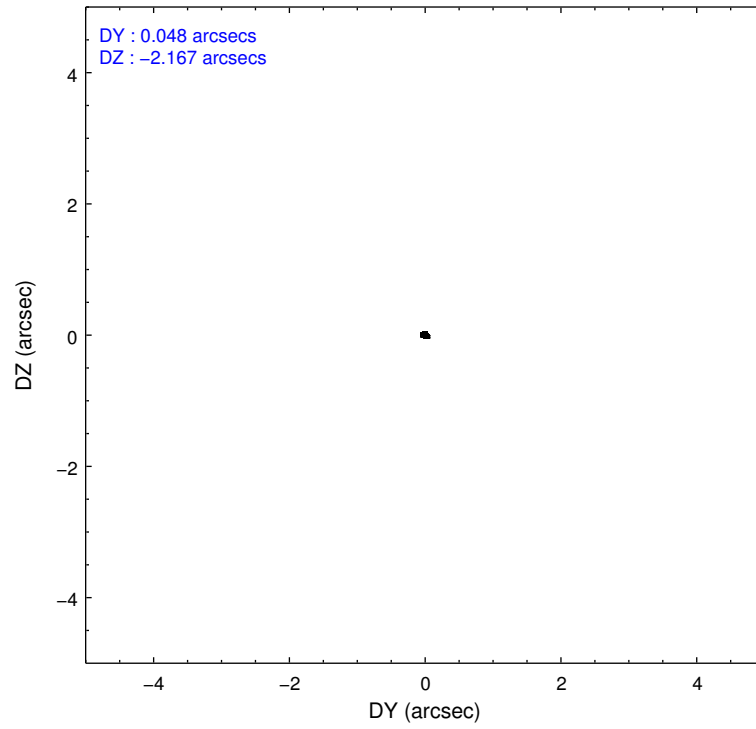
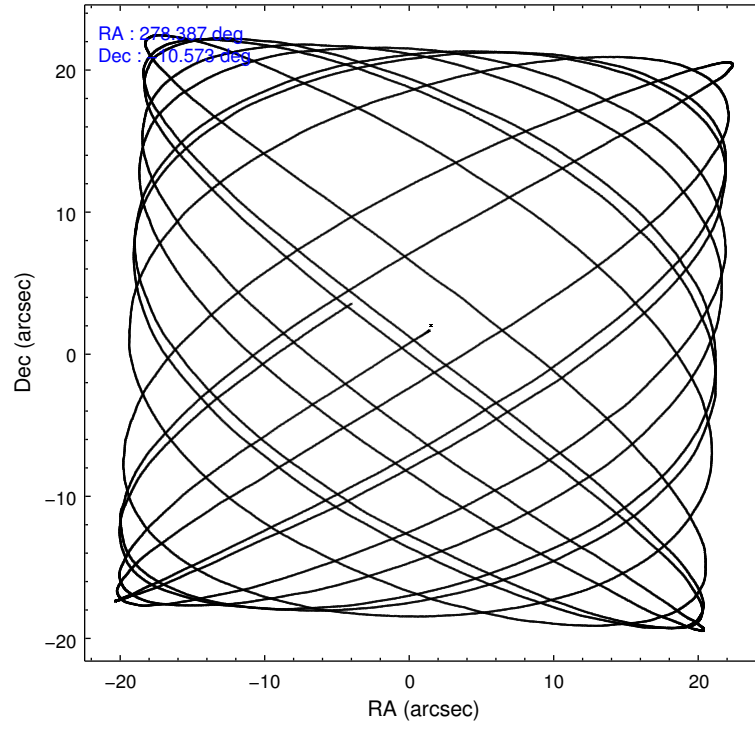
	<b>segment 0</b>
level 1 events	455910
rejected events	11939
rejected %	2%

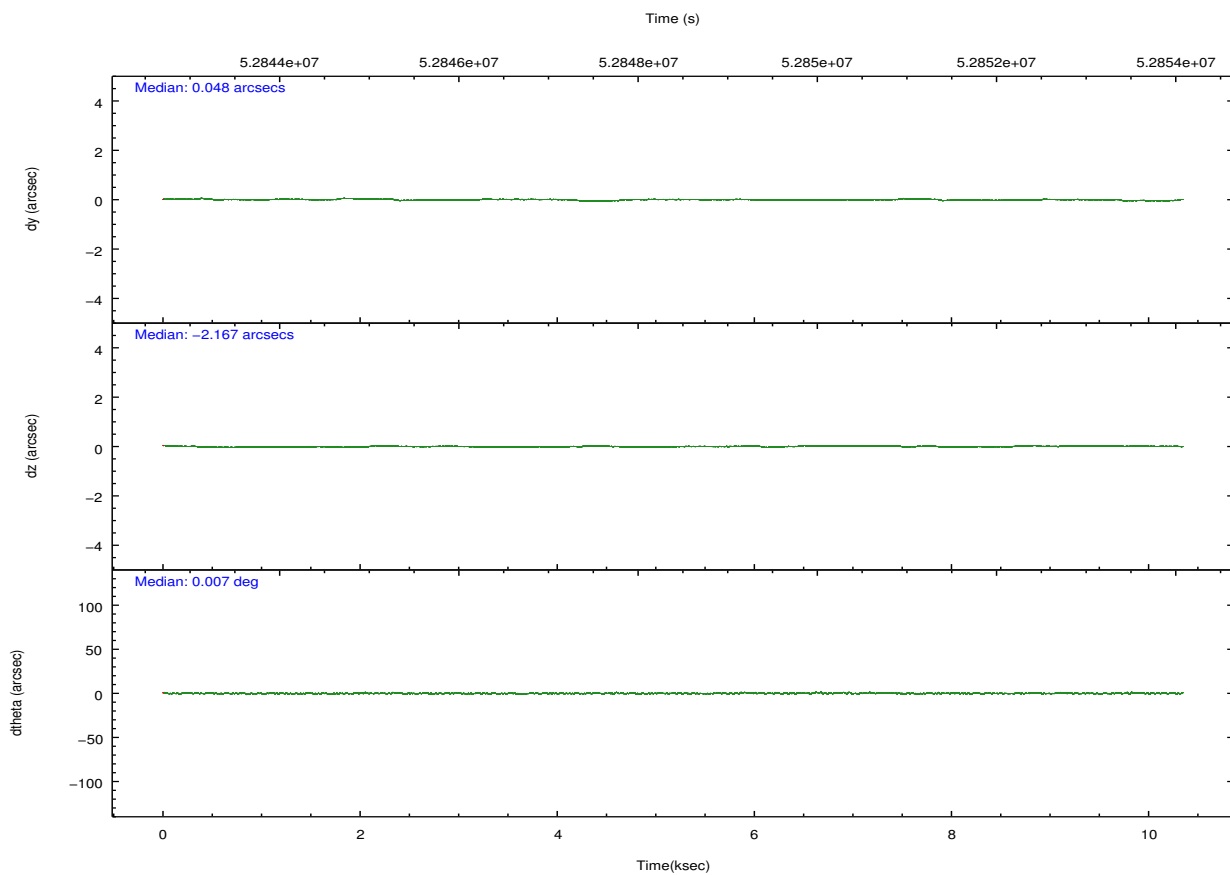
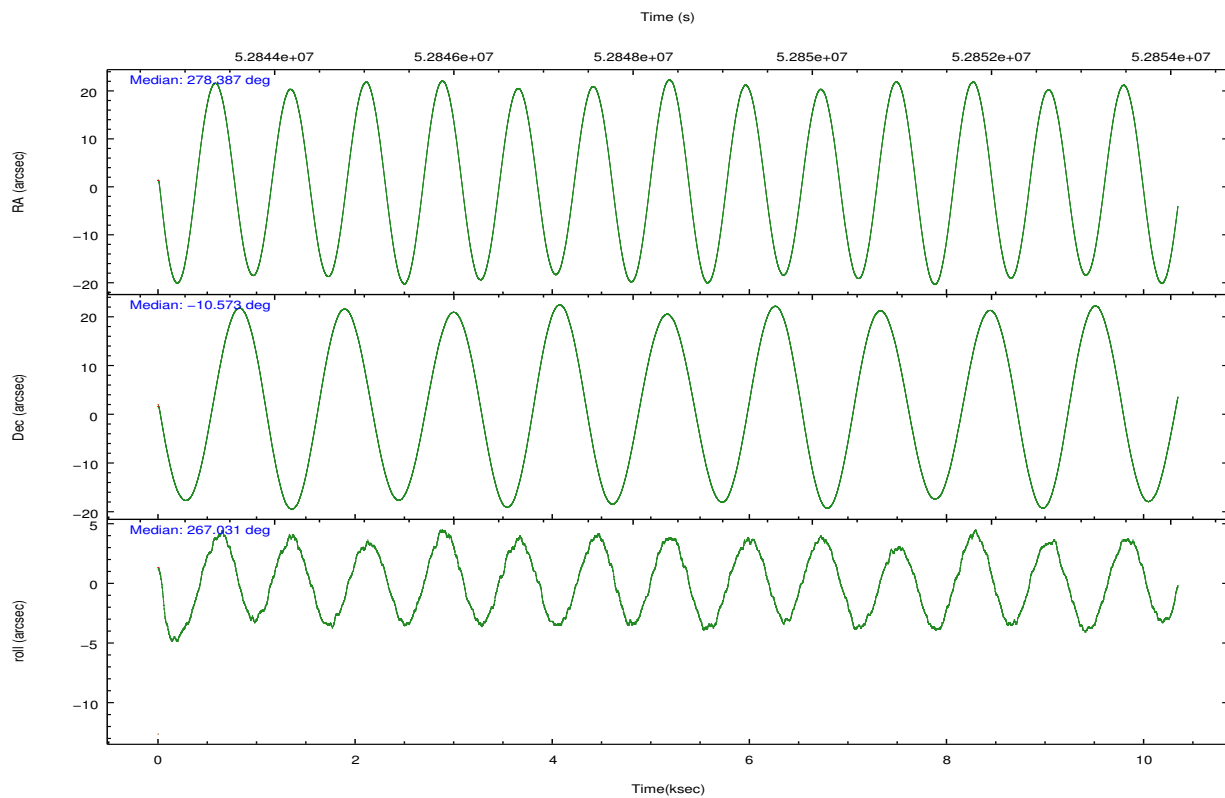
## 2.2 Compared Parameters

Parameter	Planned	Actual
Instrument	HRC	HRC
Detector	HRC-I	HRC-I
Grating	NONE	NONE
Data mode	OBSERVING	OBSERVING
Observation mode	POINTING	POINTING
Pointing RA	278.374660	278.3871772903919
Pointing Dec	-10.548433	-10.57296637381265
Pointing Roll	267.120767	267.0275735878604
SIM focus pos (mm)	-1.040293	-1.016036269358593
SIM defocus (mm)	0	0.02425635130028114
SIM translation stage pos (mm)	126.985494	126.9829799899862
SIM translation stage offset (mm)	0	0.002508901615314585
Observation start time	52843704.184000	52843037.198525
Observation start date	1999-09-04T14:47:20	1999-09-04T14:37:17
Observation end time	52849704.184000	52854645.323942
Observation end date	1999-09-04T16:27:20	1999-09-04T17:50:45

Parameter	Planned	Actual
Obspar format version number	6	6
Obspar file type	PREDICTED	ACTUAL
Obspar update status	NONE	UPDATED

## 2.3 Aspect



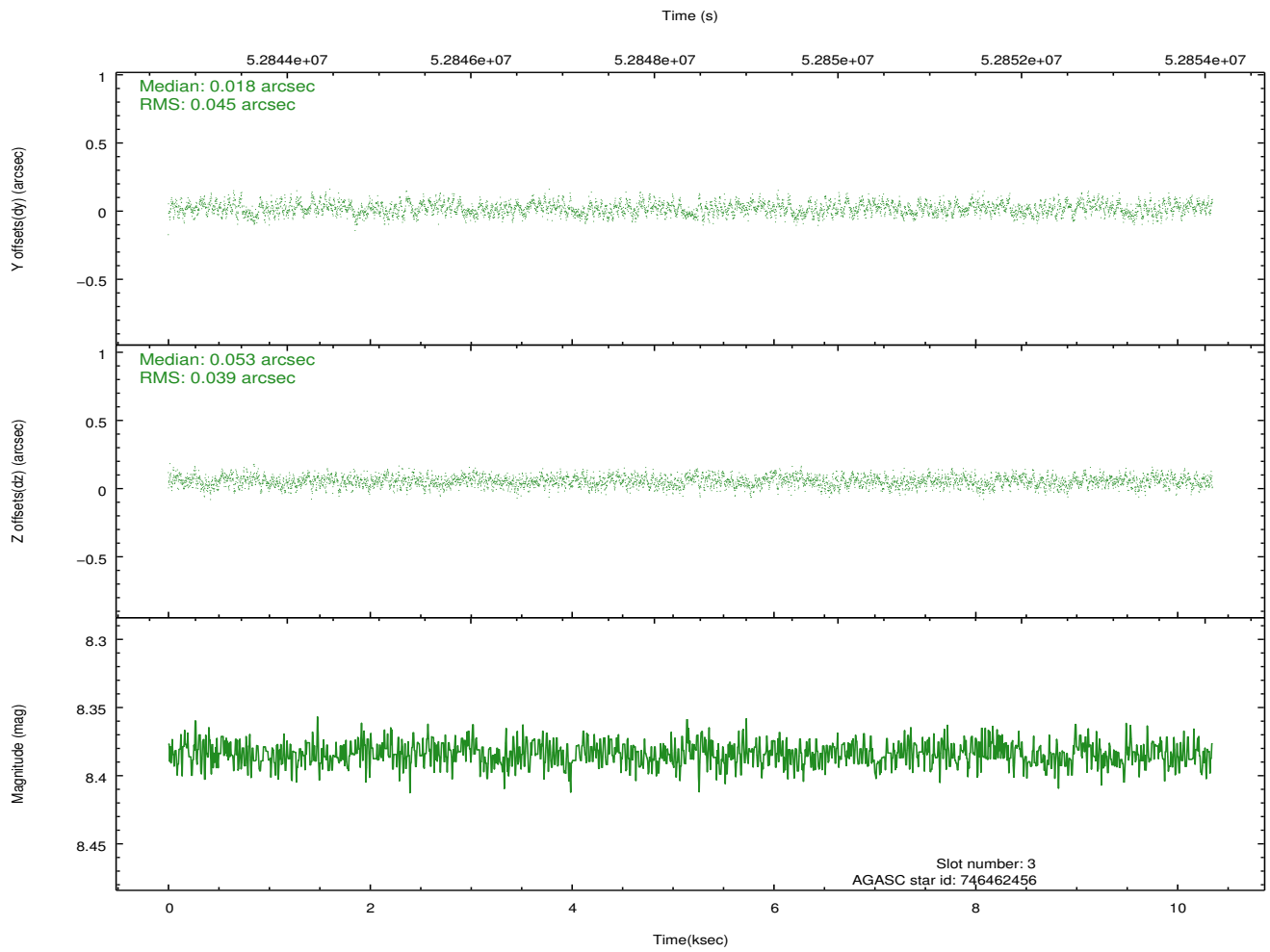
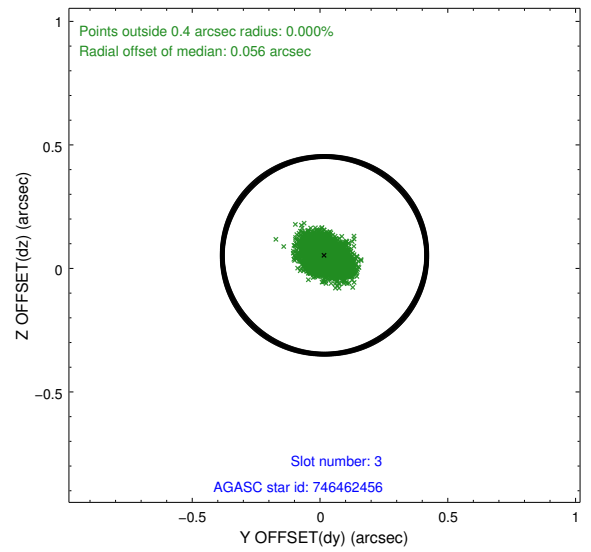
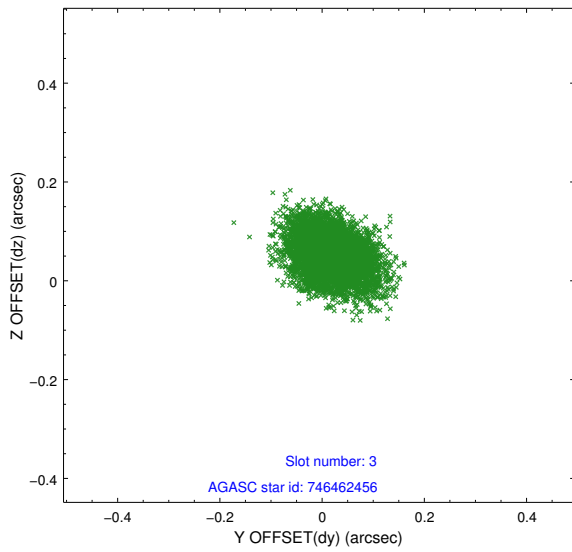


### Slot Statistics

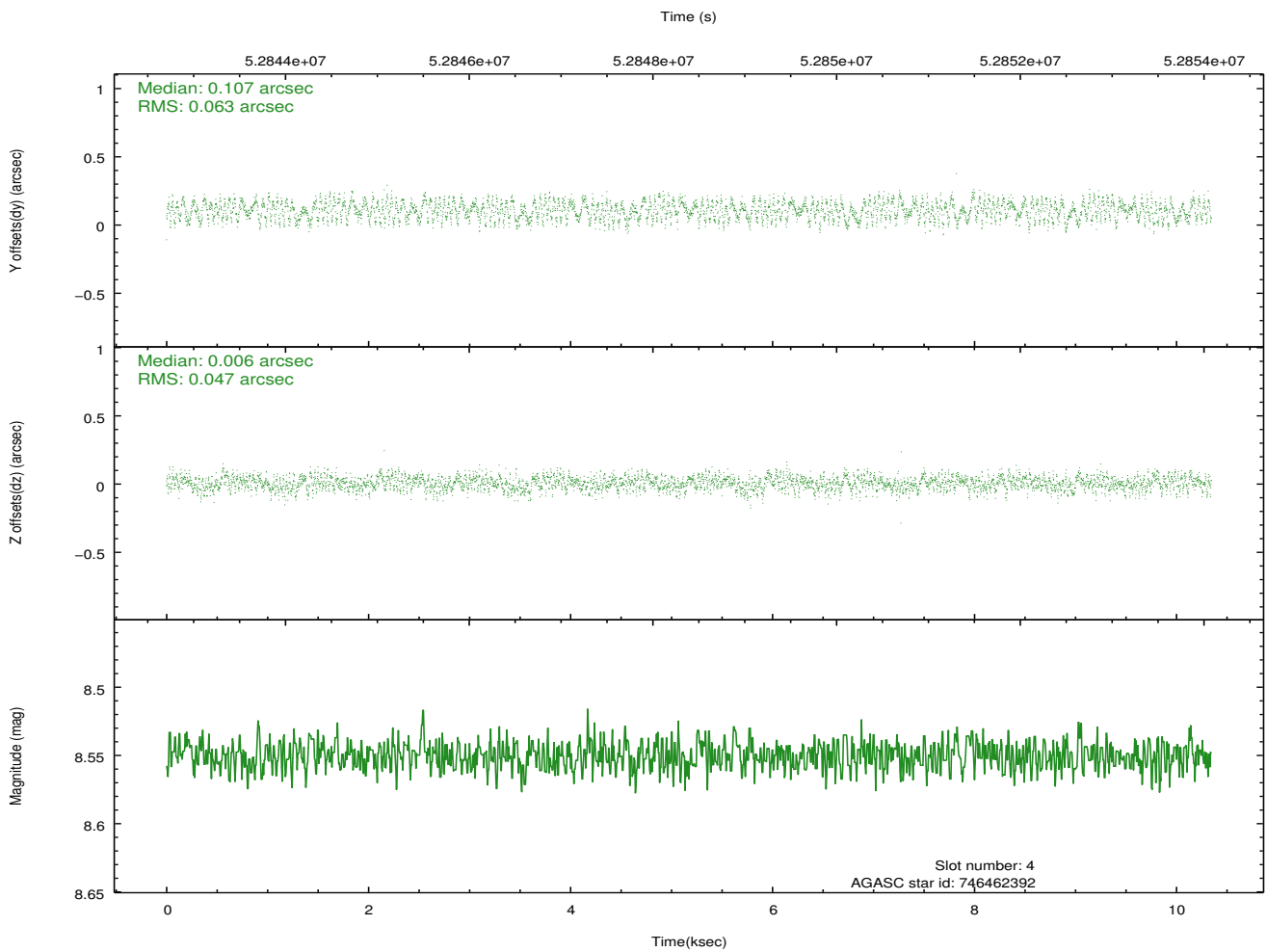
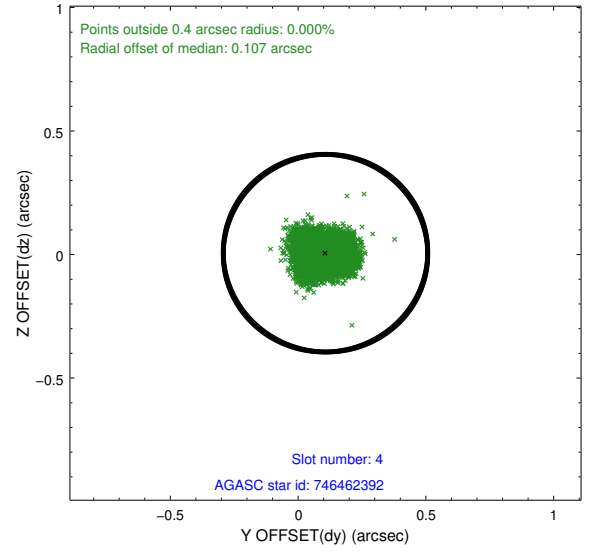
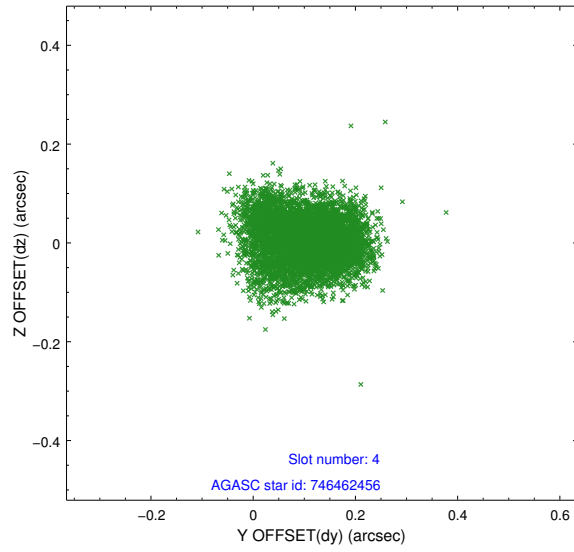
slot	status	id	mag	n_pts	med_dy	med_dz	dr1	dr2	ra	dec	mean_y	mean_z
0	FID	HRC-I-1	6.95	5047	0.034	-0.106	0.006	0.010	0.000000	0.000000	-755.37	-1285.55
1	FID	HRC-I-3	7.04	5048	0.043	0.031	0.007	0.011	0.000000	0.000000	-1184.07	1018.89
2	FID	HRC-I-4	6.98	5047	0.037	-0.014	0.005	0.009	0.000000	0.000000	1287.12	1016.98
3	GUIDE	746462456	8.38	5048	0.018	0.053	0.064	0.102	278.652171	-10.530173	-115.83	978.63
4	GUIDE	746462392	8.55	5046	0.107	0.006	0.086	0.130	279.038421	-10.890715	1114.22	2406.57
5	GUIDE	746460272	8.93	5046	-0.047	0.022	0.084	0.128	278.847488	-10.152127	-1508.88	1603.34
6	GUIDE	746460328	9.81	5046	-0.077	-0.082	0.131	0.208	278.603974	-9.898096	-2380.50	695.96
7	GUIDE	746461728	9.80	5043	0.003	-0.005	0.102	0.161	278.986921	-10.530755	-171.95	2162.23

## 2.4 Star Slots

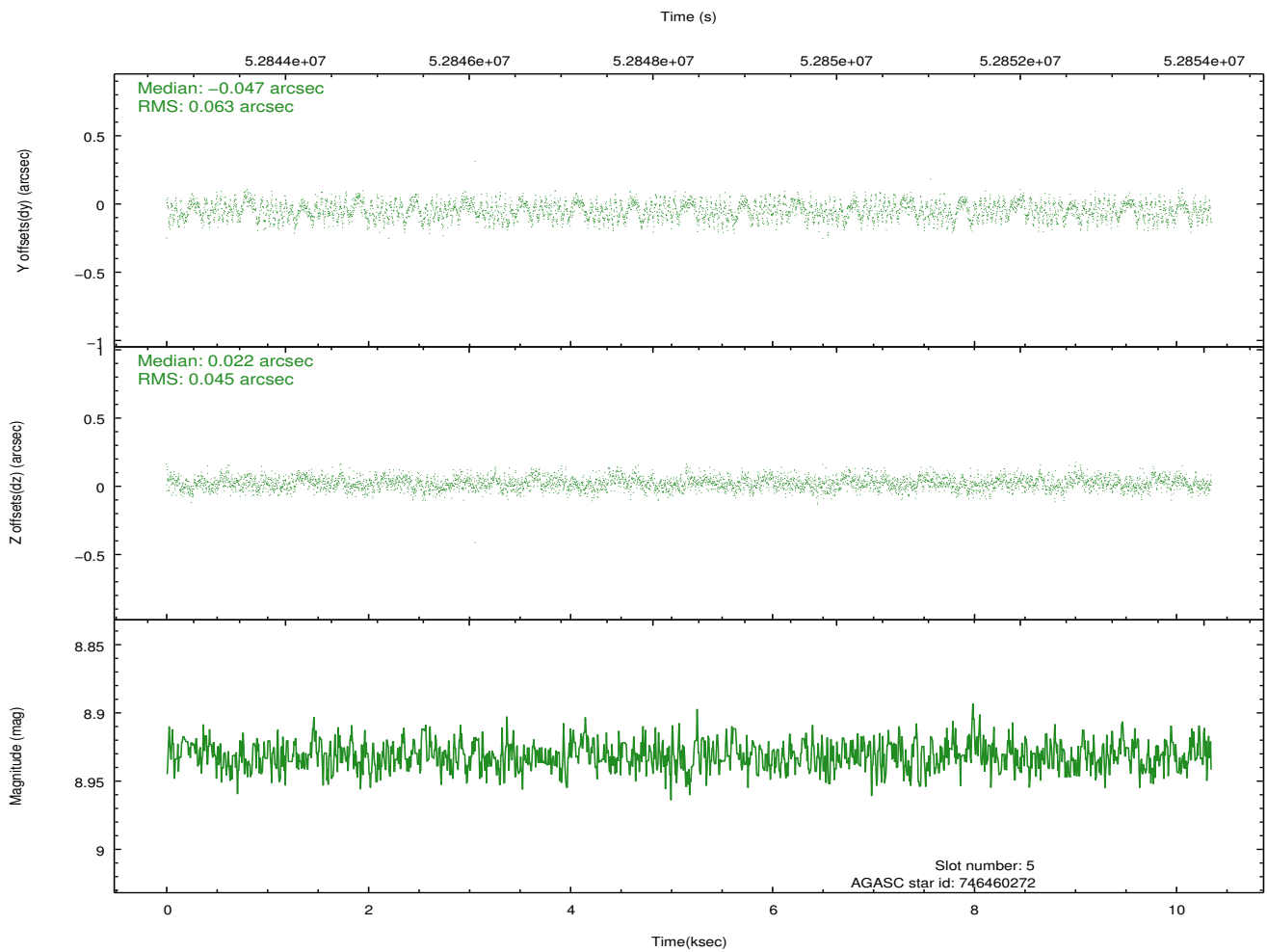
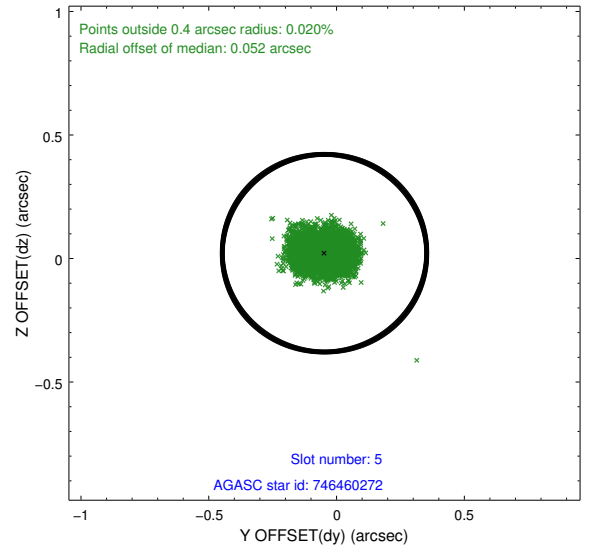
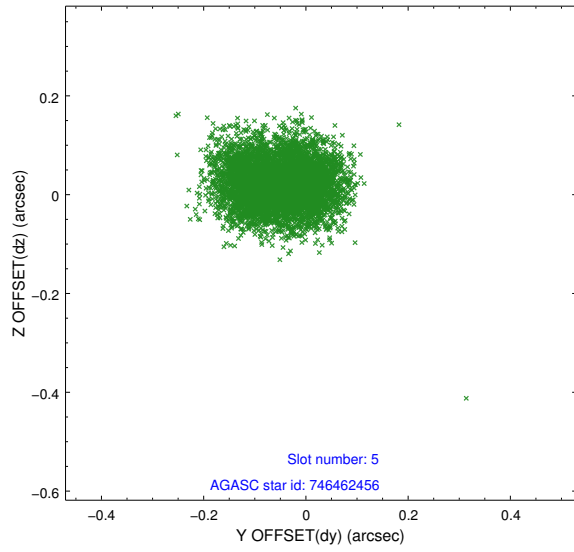
### 2.4.1 Slot 3



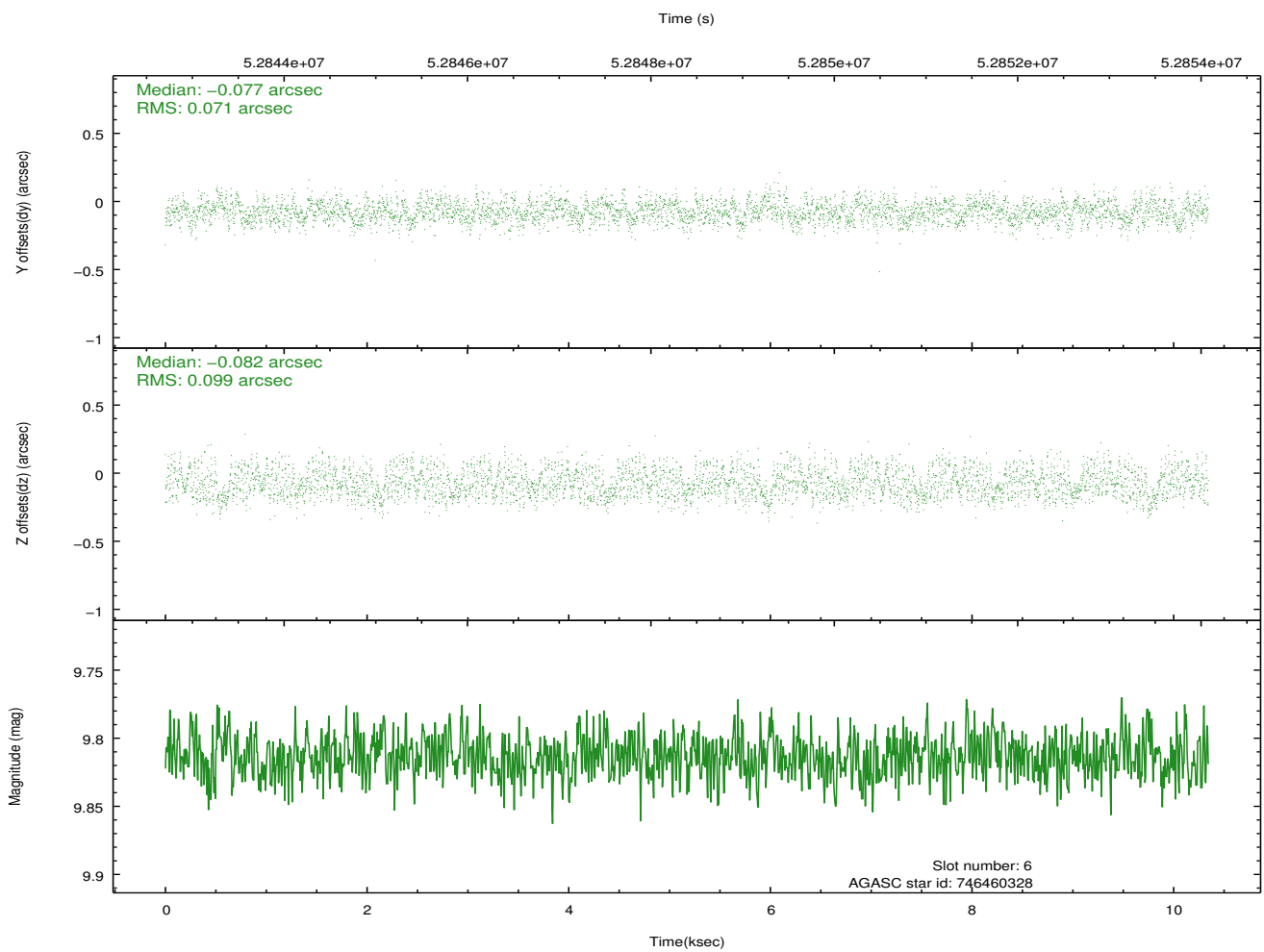
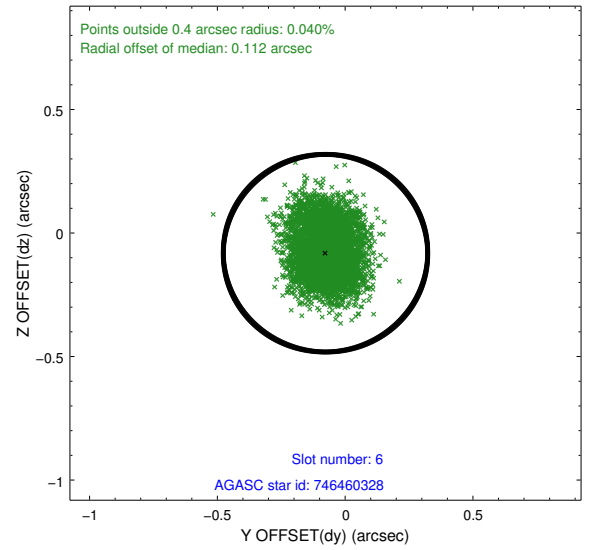
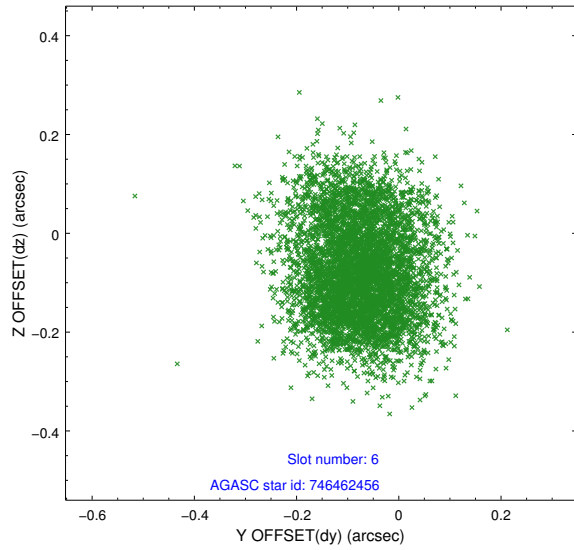
## 2.4.2 Slot 4



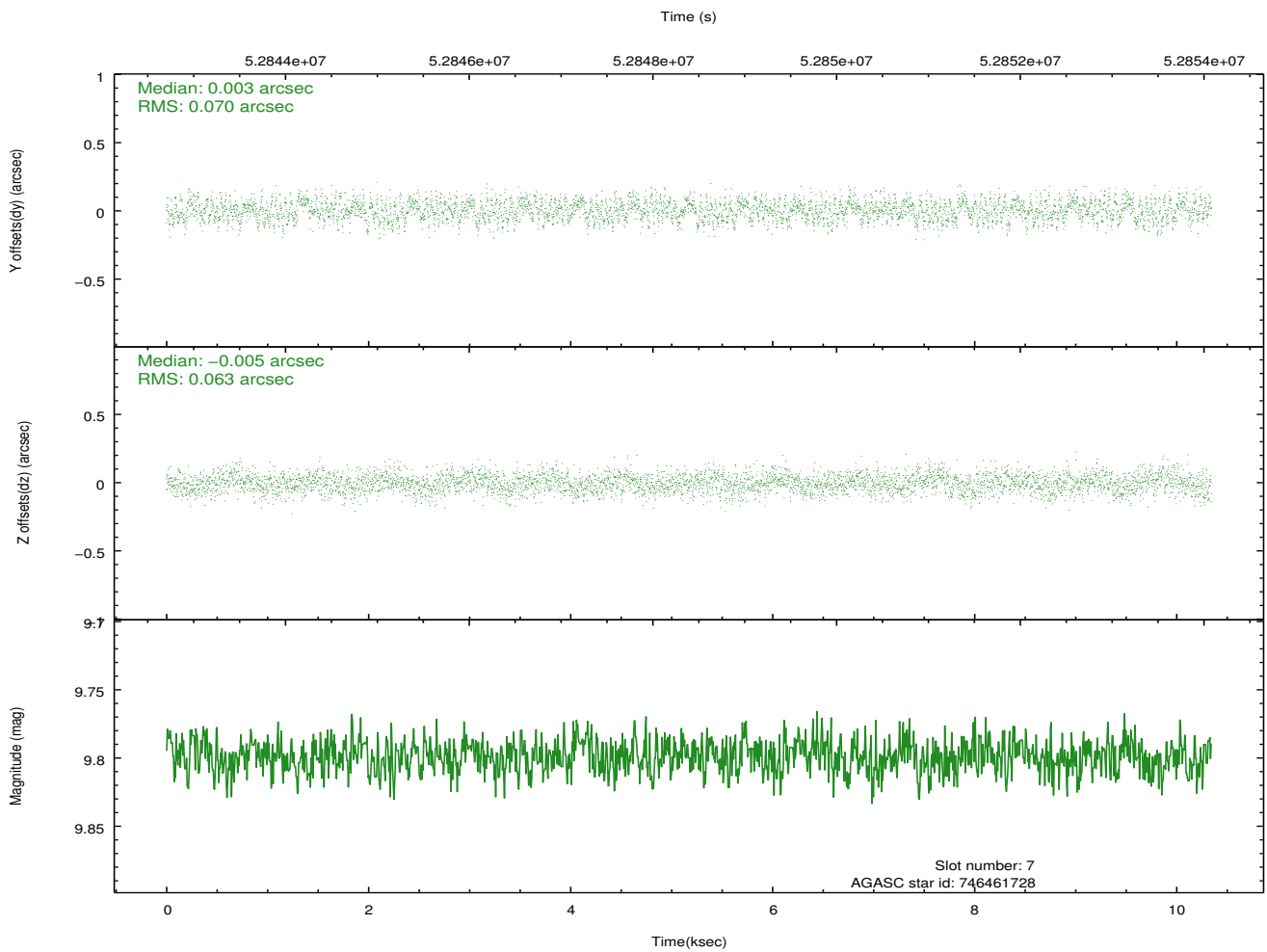
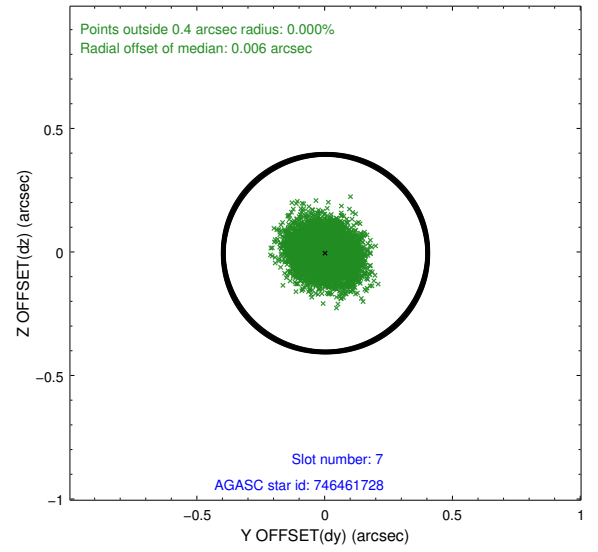
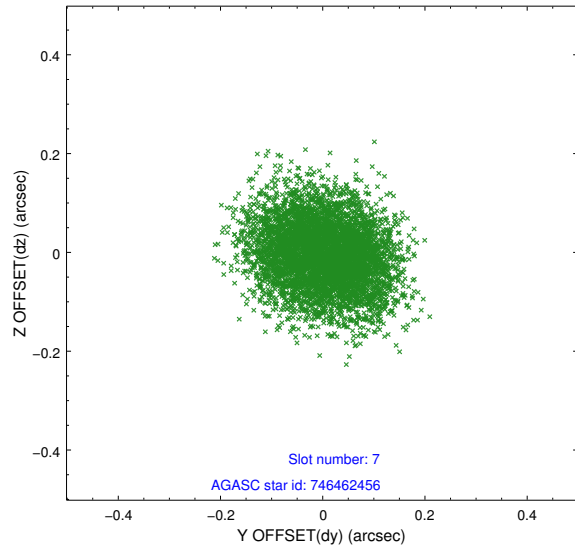
### 2.4.3 Slot 5



## 2.4.4 Slot 6

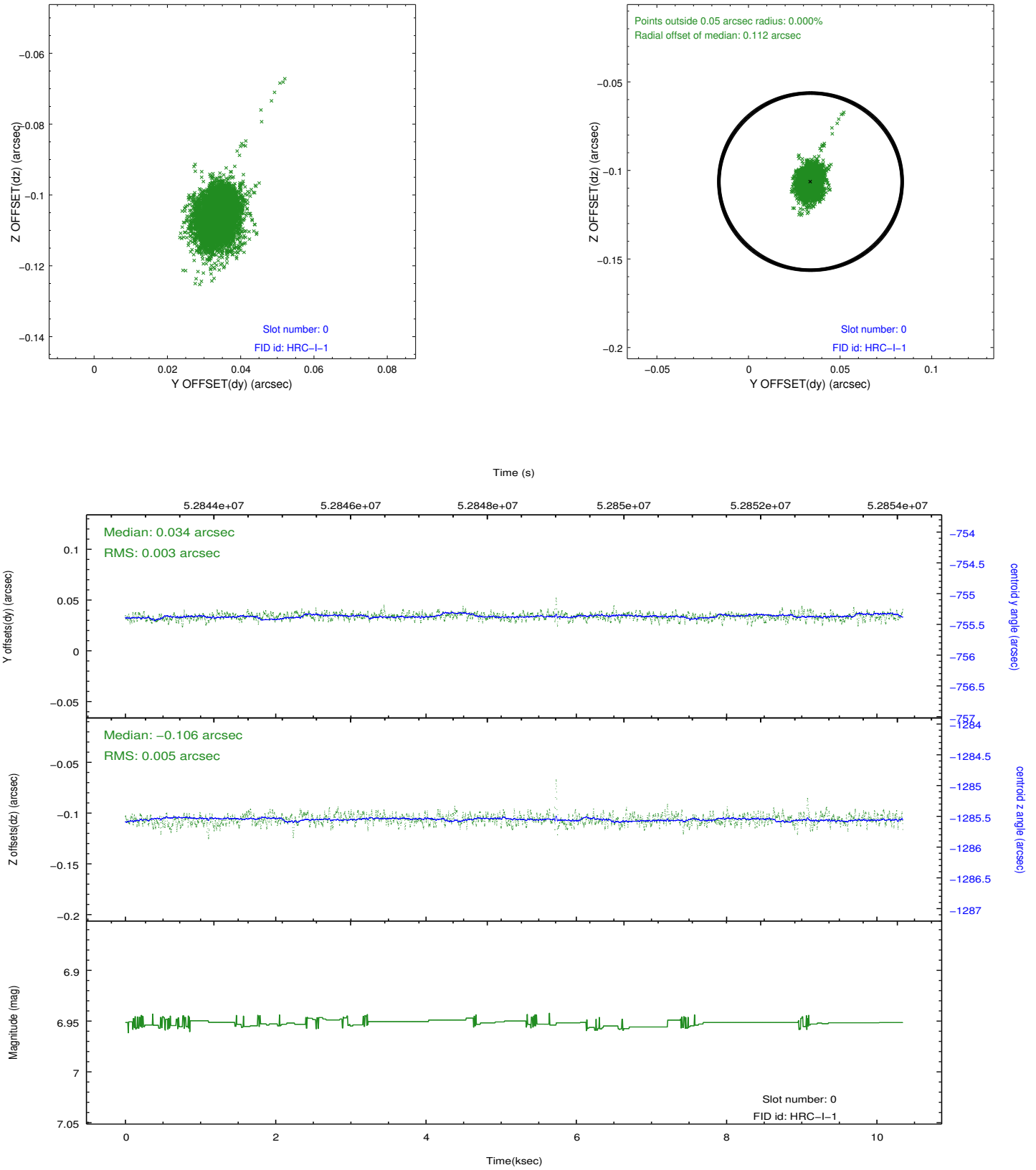


## 2.4.5 Slot 7

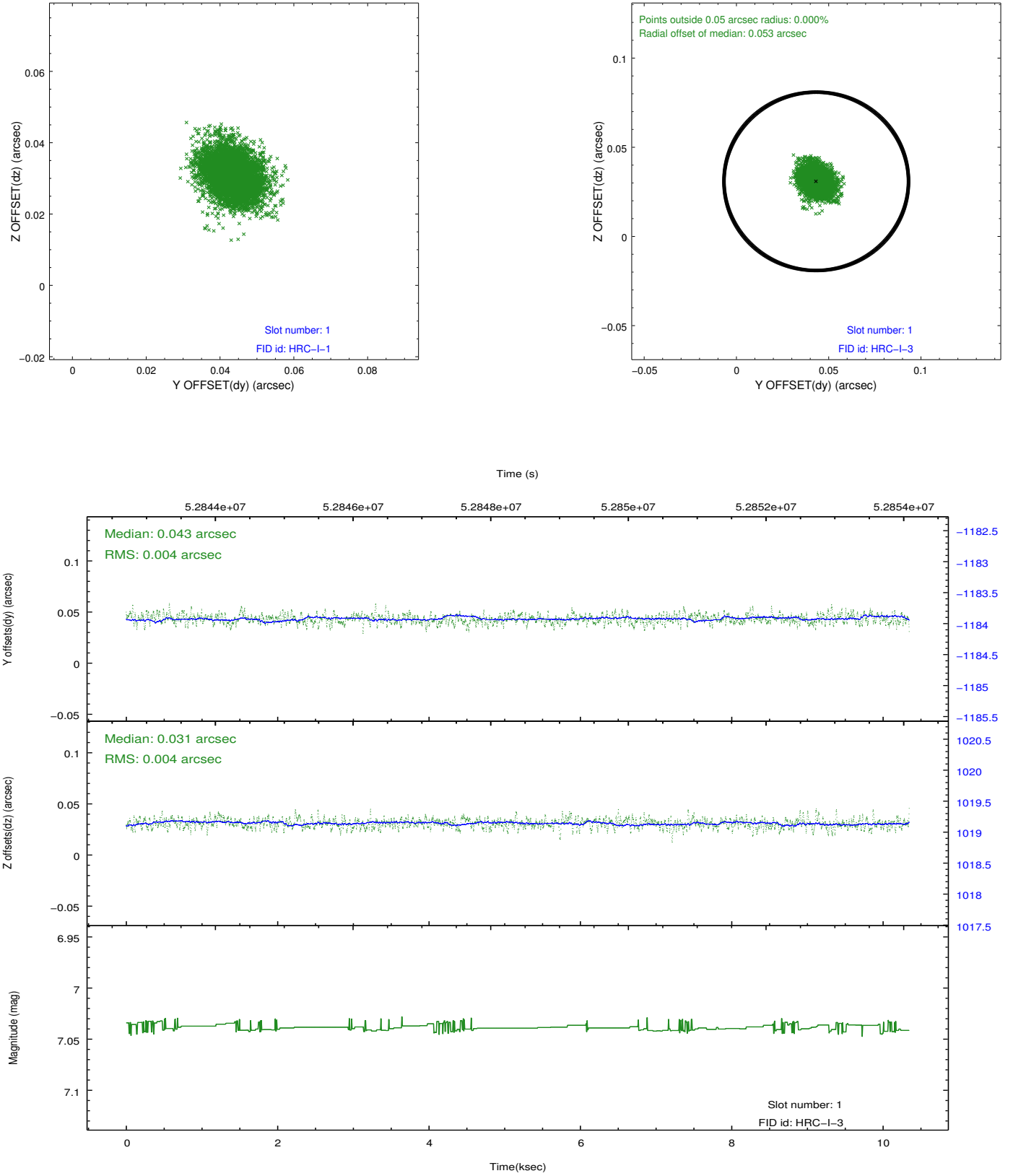


## 2.5 FID Slots

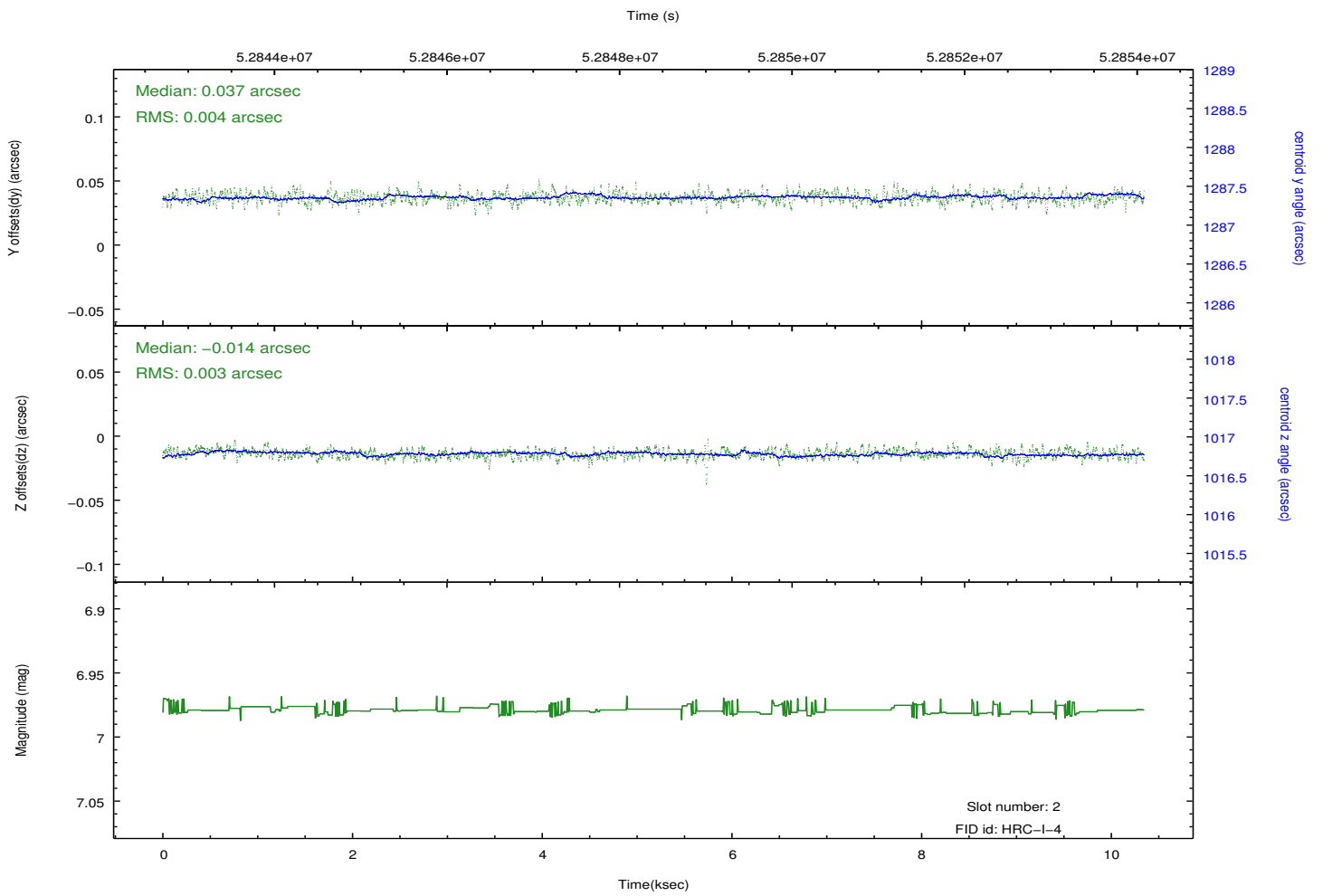
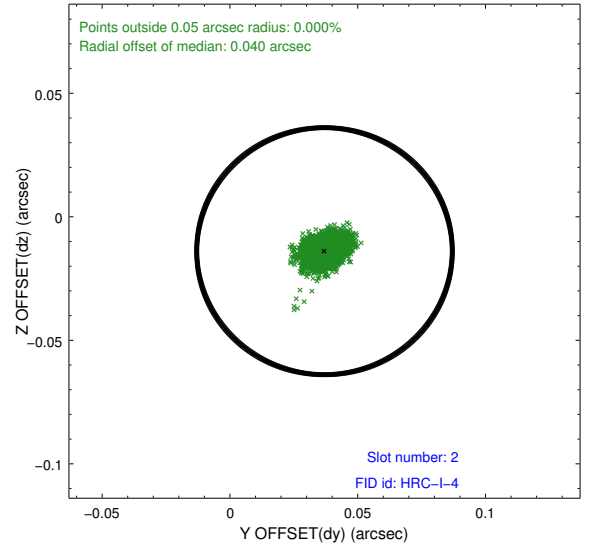
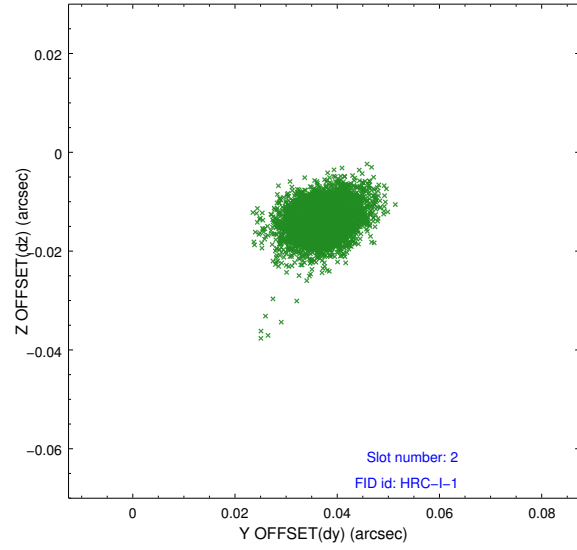
### 2.5.1 Slot 0



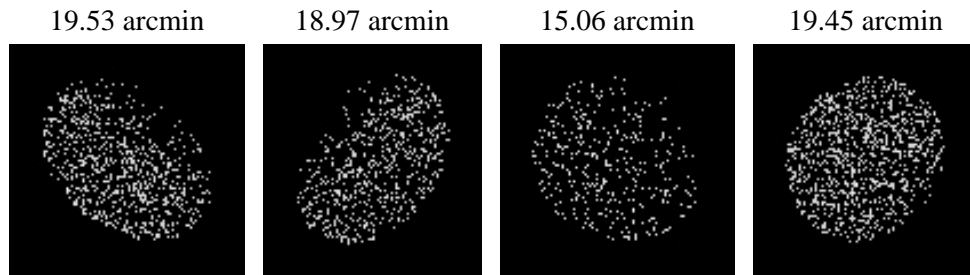
## 2.5.2 Slot 1



### 2.5.3 Slot 2



### 3 Point Sources



# A Summary

## A.1 Status

V&V Scientist	Beth Sundheim
V&V Date (YYYY-MM-DD)	2010.02.01
V&V Edition	1
V&V Disposition and Status	OK
V&V Charge Time	7.254

## A.2 Comments