

# V&V Reference Report

## L2 ASCDS Version : 8.4.5

Observation 13118 - L2 Version 2  
Chandra X-Ray Center

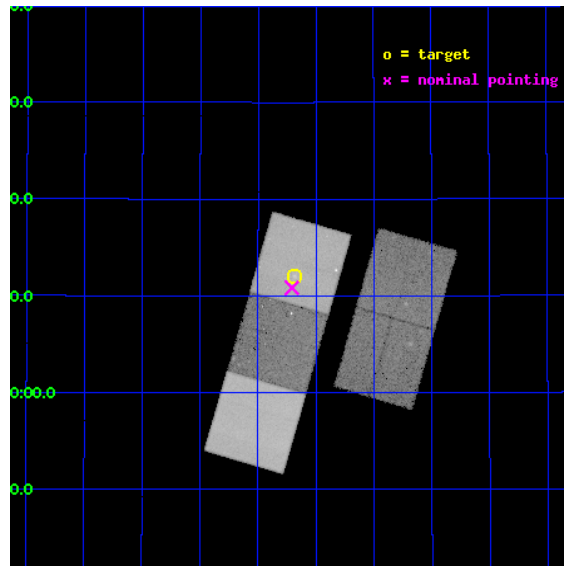
L2 Processing Date : Jul 2 2012

## Contents

<b>1</b>	<b>Front</b>	<b>2</b>
<b>2</b>	<b>OBI</b>	<b>3</b>
2.1	OBI . . . . .	3
2.1.1	Images . . . . .	3
2.1.2	Bias . . . . .	3
2.1.3	Parameters . . . . .	4
2.1.4	Events . . . . .	4
2.2	Compared Parameters . . . . .	5
2.3	Aspect . . . . .	6
2.4	Star Slots . . . . .	9
2.4.1	Slot 3 . . . . .	9
2.4.2	Slot 4 . . . . .	10
2.4.3	Slot 5 . . . . .	11
2.4.4	Slot 6 . . . . .	12
2.4.5	Slot 7 . . . . .	13
2.5	FID Slots . . . . .	14
2.5.1	Slot 0 . . . . .	14
2.5.2	Slot 1 . . . . .	15
2.5.3	Slot 2 . . . . .	16
<b>A</b>	<b>Summary</b>	<b>17</b>
A.1	Status . . . . .	17
A.2	Comments . . . . .	17

# 1 Front

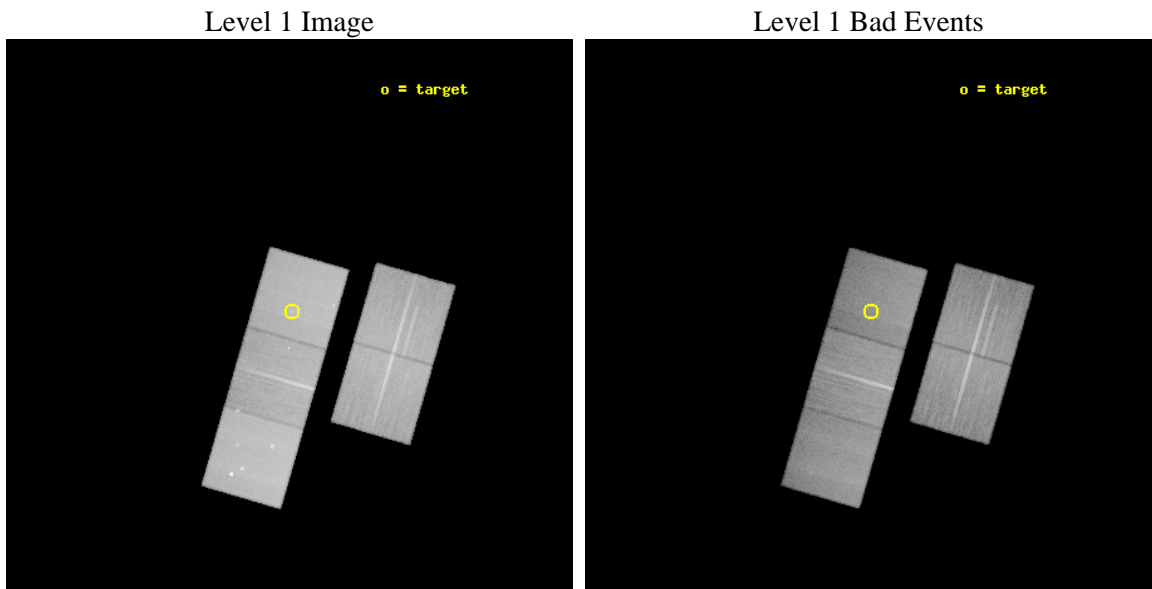
seq_num	800975	Sequence number
obs_id	13118	Observation id
title	Cool core clusters at high redshift: the unique case of WARPS J1415.1+3612	Proposal title
observer	Dr Joana Santos	Principal investigator
object	WARPS J1415.1+3612	Source name
dtcycle	0	&#160
cycle	P	events from which exps? Prim/Second/Both
ra_targ	213.796667	Observer's specified target RA [deg]
dec_targ	36.201111	Observer's specified target Dec [deg]
ra_nom	213.80184504241	Nominal RA [deg]
dec_nom	36.180690918879	Nominal Dec [deg]
roll_nom	286.15357127994	Nominal Roll [deg]
revision	2	Processing version of data
ontime	45225.900347829	Sum of GTIs [s]
livetime	44634.990664961	Livetime [s]
ontime2	45216.477466881	Sum of GTIs [s]
ontime3	45222.759387434	Sum of GTIs [s]
ontime5	45225.900347829	Sum of GTIs [s]
ontime6	45219.618387222	Sum of GTIs [s]
ontime7	45225.900347829	Sum of GTIs [s]
l2events	507303	Number of level 2 events



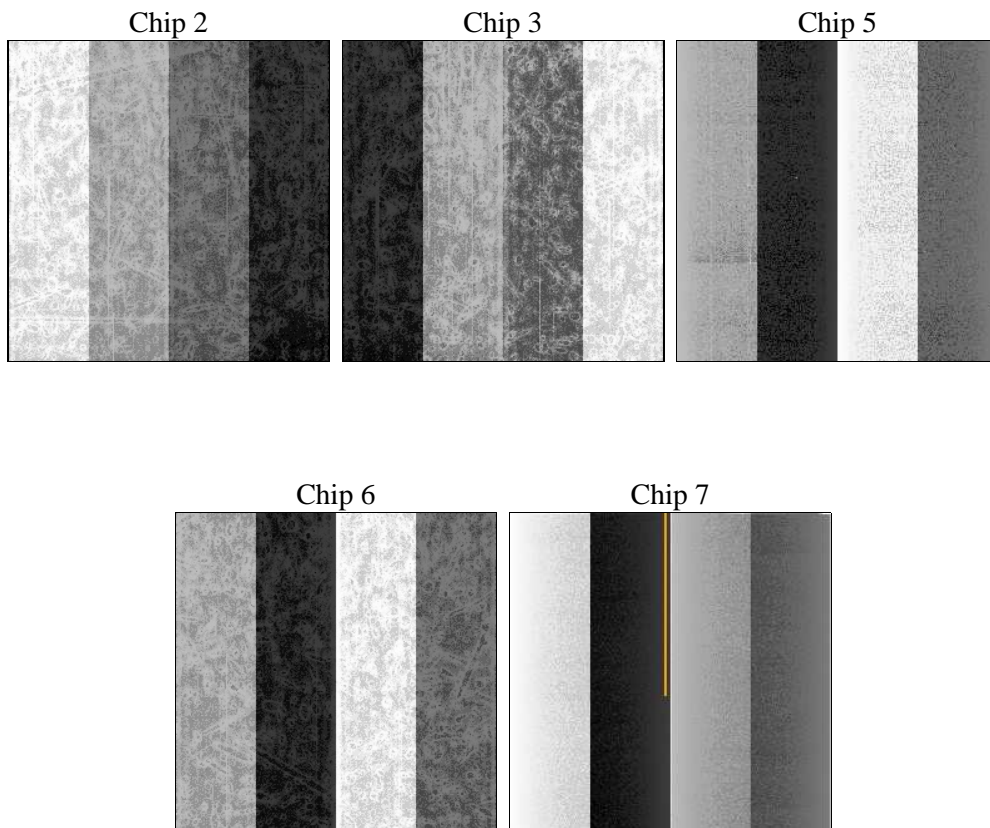
## 2 OBI

### 2.1 OBI

#### 2.1.1 Images



#### 2.1.2 Bias



### 2.1.3 Parameters

obi_num	0	Obi number	sched_exp_time	45186.828000	[s] Scheduled observation exposure time
ascdsver	8.4.5	Processing system revision	ontime	45225.900347829	Sum of GTIs [s]
caldbver	4.5.0	&#160	ontime2	45216.477466881	Sum of GTIs [s]
date	2012-07-02T19:47:21	Date and time of file creation	ontime3	45222.759387434	Sum of GTIs [s]
revision	2	Processing version of data	ontime5	45225.900347829	Sum of GTIs [s]
			ontime6	45219.618387222	Sum of GTIs [s]
			ontime7	45225.900347829	Sum of GTIs [s]
			l1events	1924386	Number of level 1 events

### 2.1.4 Events

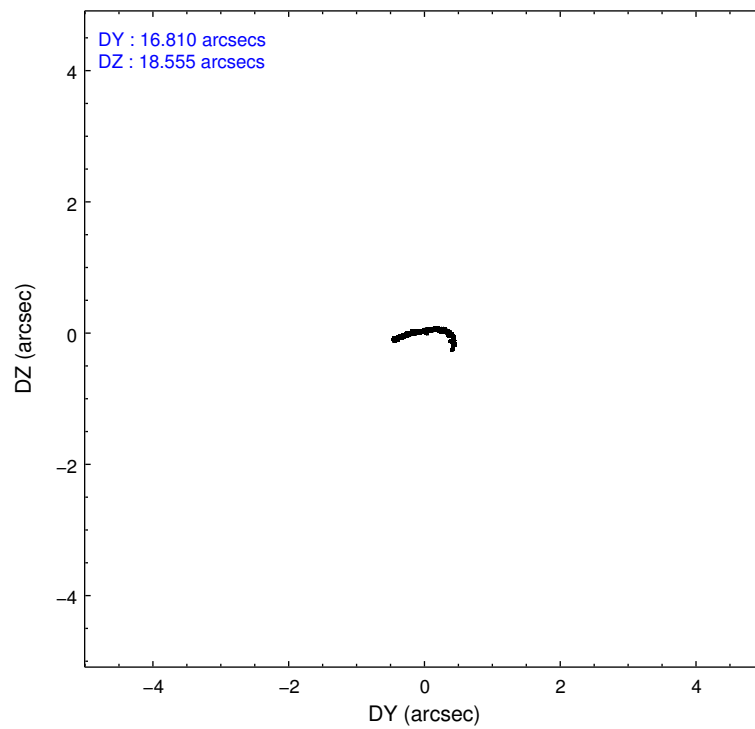
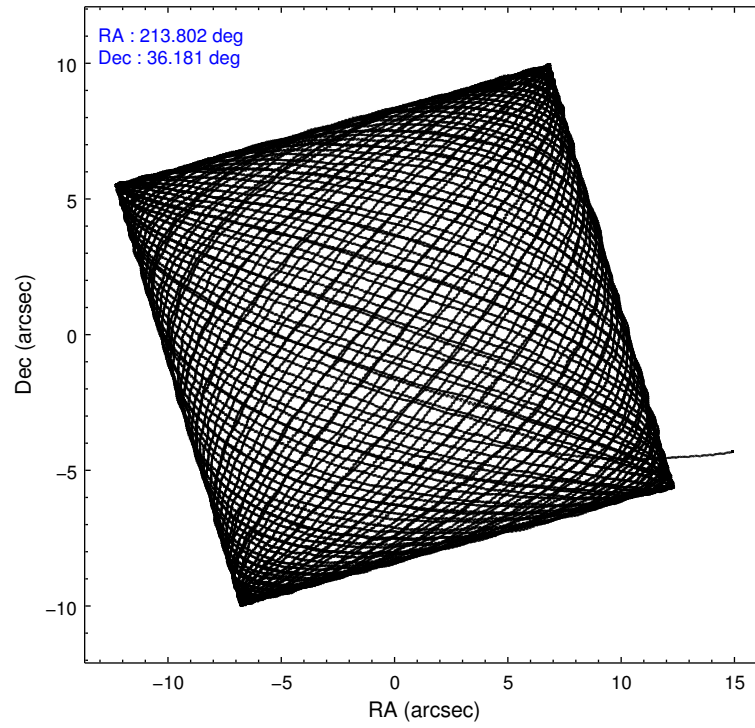
	ccd 2	ccd 3	ccd 5	ccd 6	ccd 7
level 1 events	340241	320891	507210	344105	411939
rejected events	305359	287314	255846	305584	226344
rejected %	89%	89%	50%	88%	54%

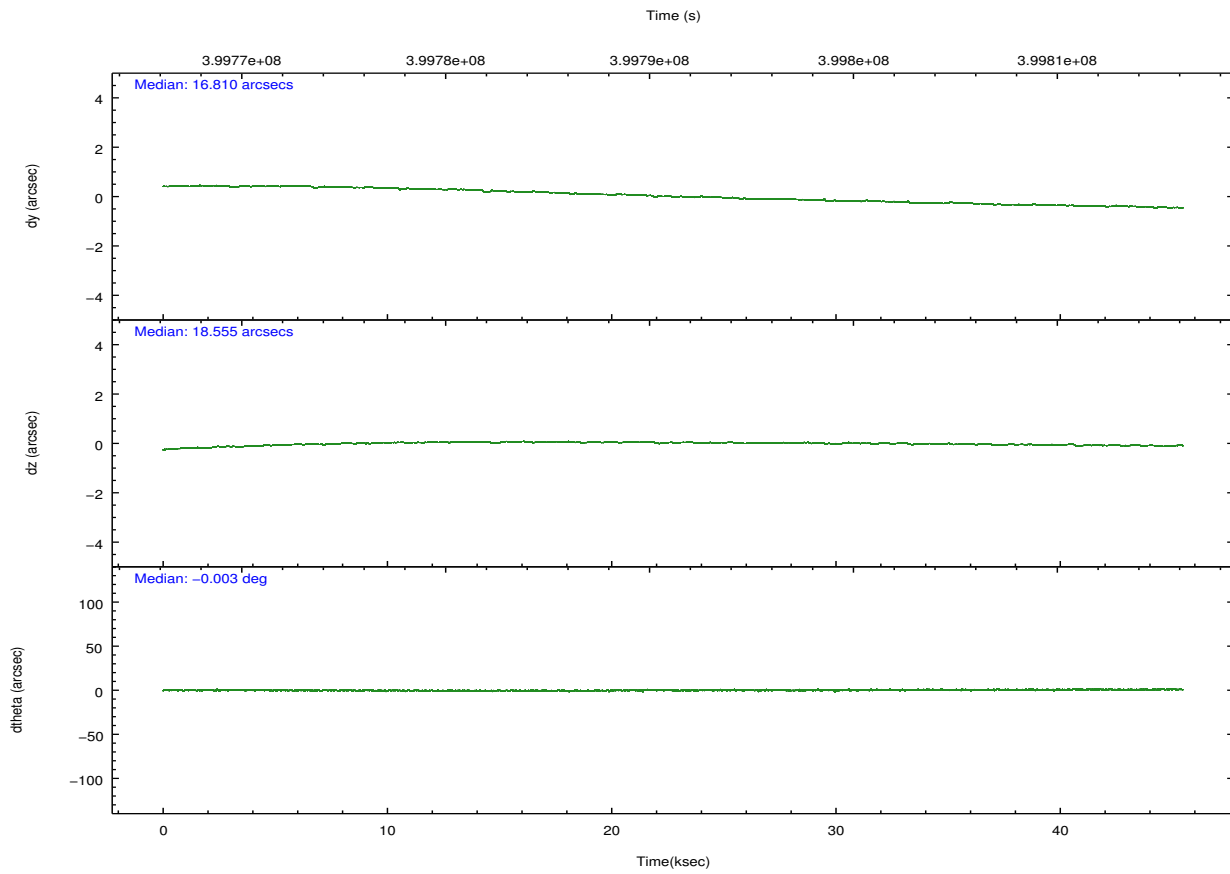
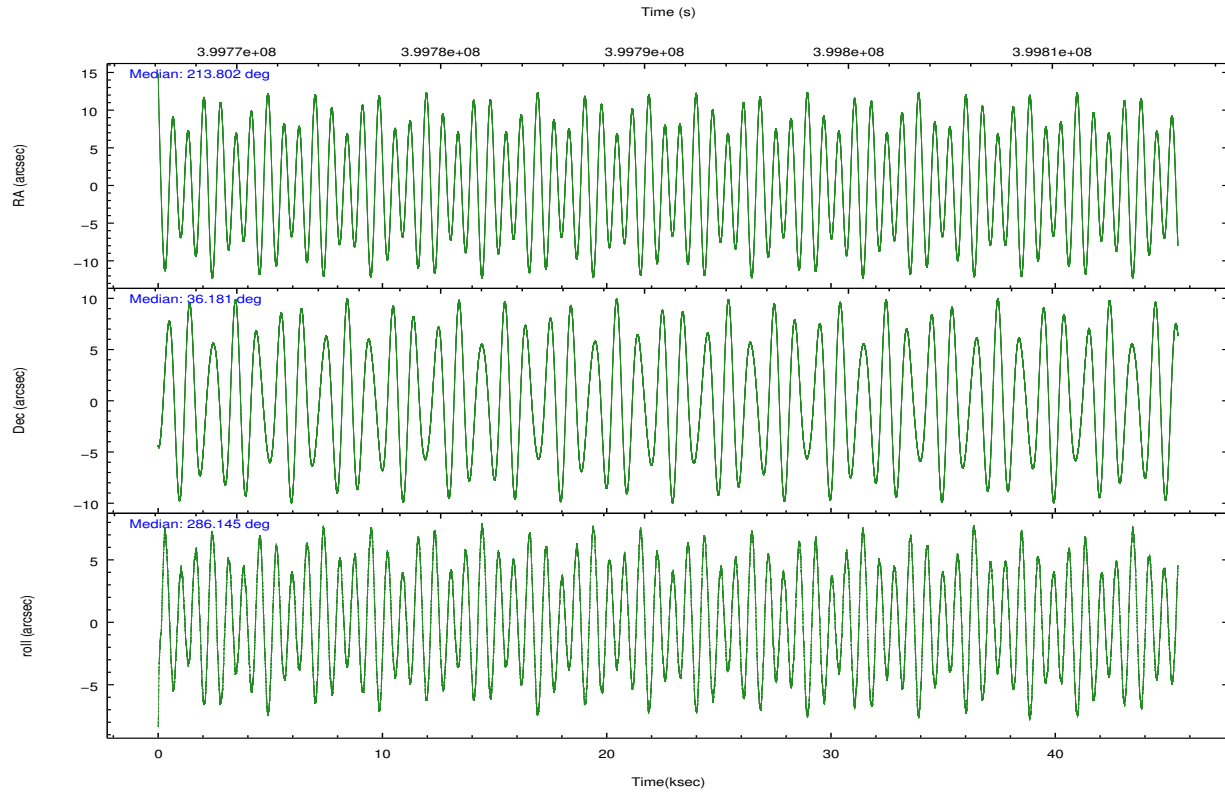
	ccd 2	ccd 3	ccd 5	ccd 6	ccd 7
grade 0 events	12549	11671	26406	13847	17550
	3%	3%	5%	4%	4%
grade 1 events	202	186	1045	198	488
	0%	0%	0%	0%	0%
grade 2 events	8510	7517	74672	8689	37907
	2%	2%	14%	2%	9%
grade 3 events	3575	3706	10013	3929	16362
	1%	1%	1%	1%	3%
grade 4 events	3685	3737	9617	3854	16487
	1%	1%	1%	1%	4%
grade 5 events	12155	14899	39811	15236	42974
	3%	4%	7%	4%	10%
grade 6 events	6565	6946	130675	8204	97301
	1%	2%	25%	2%	23%
grade 7 events	293000	272229	214971	290148	182870
	86%	84%	42%	84%	44%

## 2.2 Compared Parameters

Parameter	Planned	Actual	Parameter	Planned	Actual
Instrument	ACIS	ACIS	Obspar format version number	7	7
Detector	ACIS-23567	ACIS-23567	Obspar file type	PREDICTED	ACTUAL
Grating	NONE	NONE	Obspar update status	NONE	UPDATED
Data mode	VFAINT	VFAINT	Number of optional ACIS chips dropped	0	0
Observation mode	POINTING	POINTING	On-chip summing requested	N	N
[deg] Pointing RA	213.777095	213.8018450424117	Subarray requested	NONE	NONE
[deg] Pointing Dec	36.199358	36.18069091887873	Alternating exposures requested	N	N
[deg] Pointing Roll	286.011554	286.1535712799424	[s] Primary exposure time	0.000000	3.1
[mm] SIM focus pos	-0.684267	-0.6828225247311905			
[mm] SIM defocus	0	0.001444936568705701			
[mm] SIM translation stage pos	-190.132523	-190.1425803651734			
[mm] SIM translation stage offset	0	0.01005778216563158			
[s] Observation start time (MET)	399768697.184000	399767717.67178			
Observation start date	2010-09-01T22:50:31	2010-09-01T22:35:17			
[s] Observation end time (MET)	399813884.184000	399814110.19916			
Observation end date	2010-09-02T11:23:38	2010-09-02T11:28:30			
Read mode	TIMED	TIMED			

## 2.3 Aspect



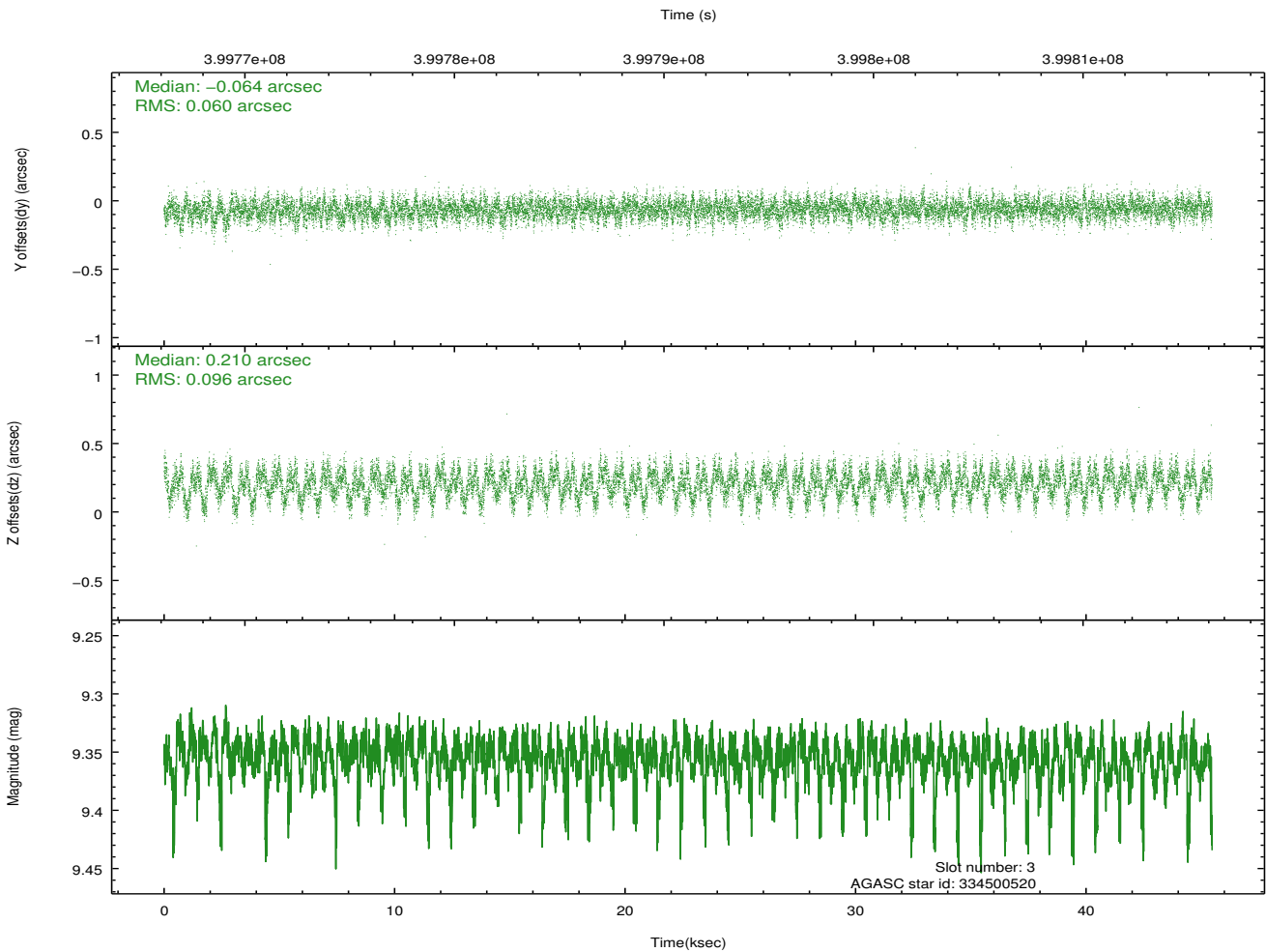
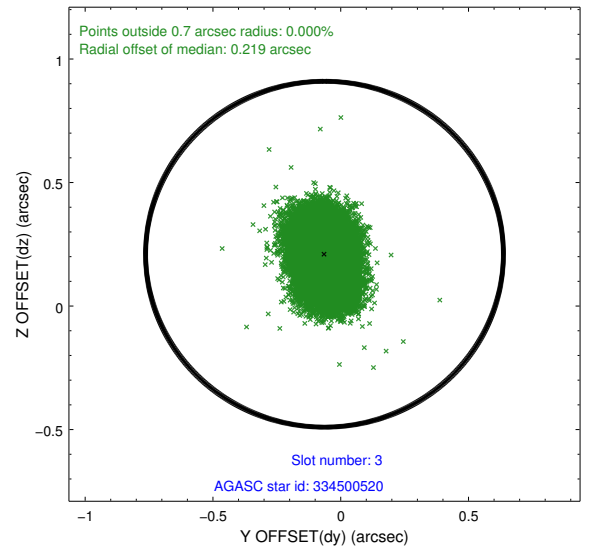
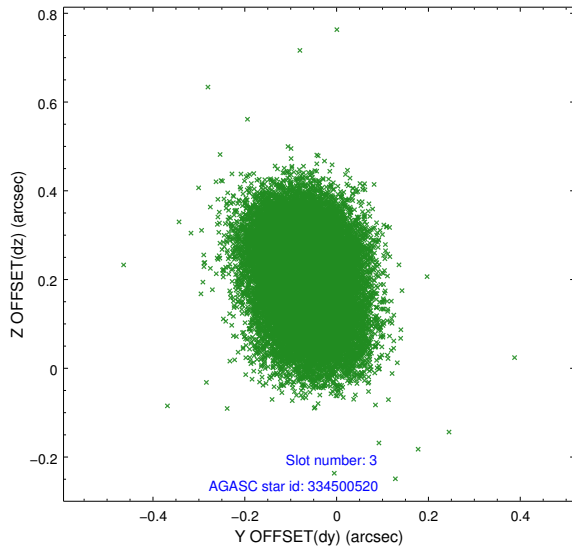


### Slot Statistics

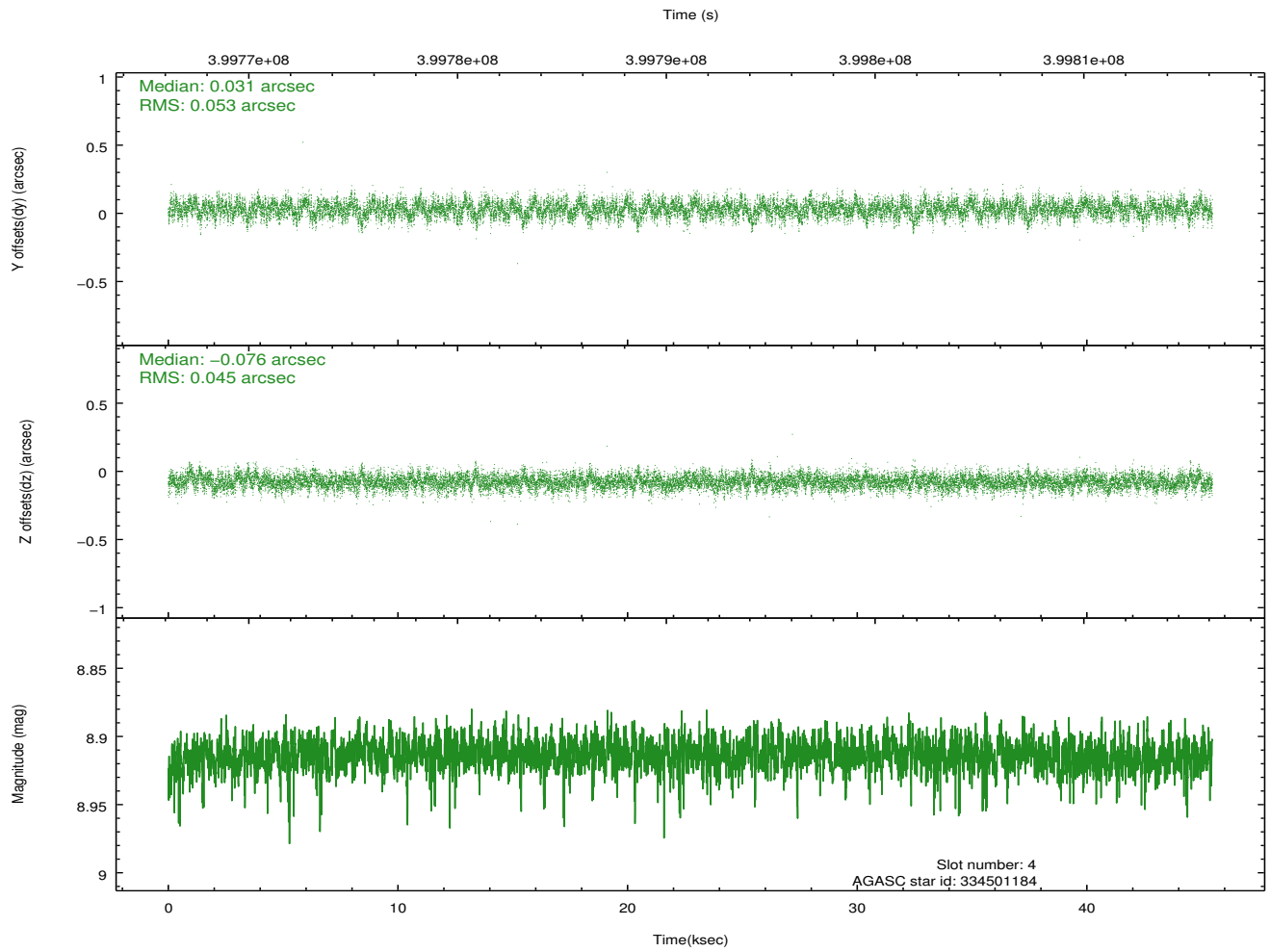
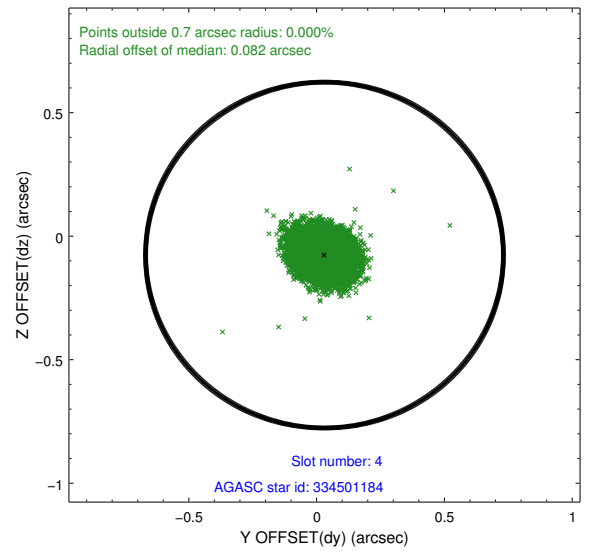
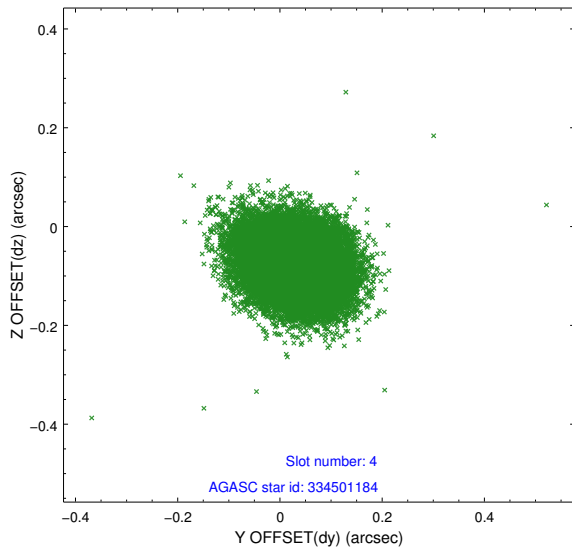
slot	status	id	mag	n_pts	med_dy	med_dz	dr1	dr2	ra	dec	mean_y	mean_z
0	FID	ACIS-S-2	6.87	11090	-0.065	-0.032	0.008	0.013	0.000000	0.000000	-769.95	-1739.97
1	FID	ACIS-S-4	6.96	11090	0.153	0.040	0.011	0.017	0.000000	0.000000	2143.58	168.53
2	FID	ACIS-S-5	6.99	11089	-0.117	0.000	0.014	0.022	0.000000	0.000000	-1822.82	162.23
3	GUIDE	334500520	9.35	22130	-0.064	0.210	0.122	0.196	213.466637	36.591018	-1603.46	-472.90
4	GUIDE	334501184	8.91	22160	0.031	-0.076	0.074	0.120	214.124254	36.665460	-1338.01	1426.91
5	GUIDE	334503736	8.72	22167	0.080	0.008	0.090	0.146	213.589679	35.541631	2124.68	-1180.57
6	GUIDE	334503832	8.26	22105	0.030	-0.062	0.075	0.122	213.240523	35.600595	1635.54	-2102.69
7	GUIDE	334499248	9.82	22145	-0.074	-0.075	0.125	0.206	214.517870	36.531889	-567.54	2392.17

## 2.4 Star Slots

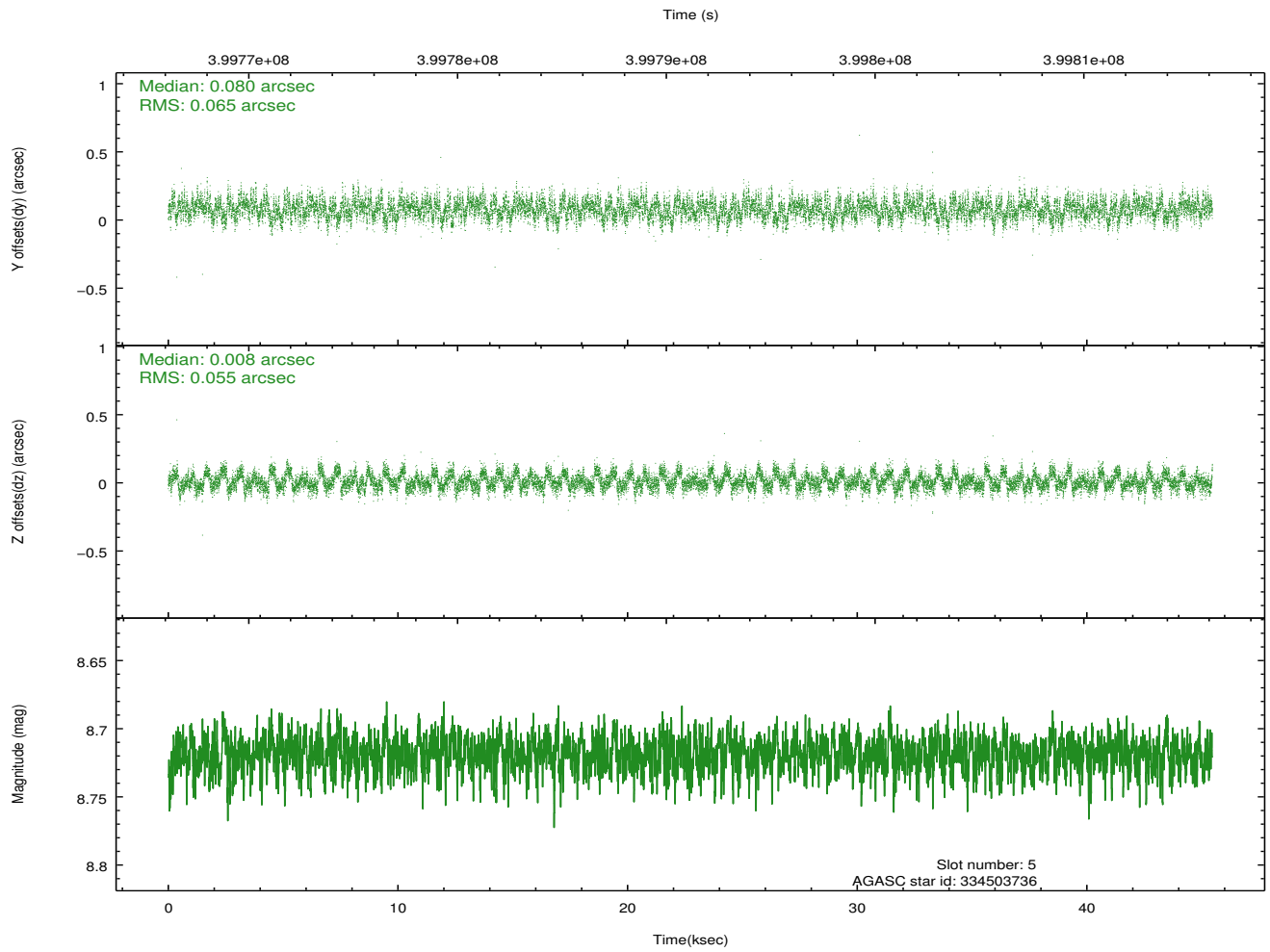
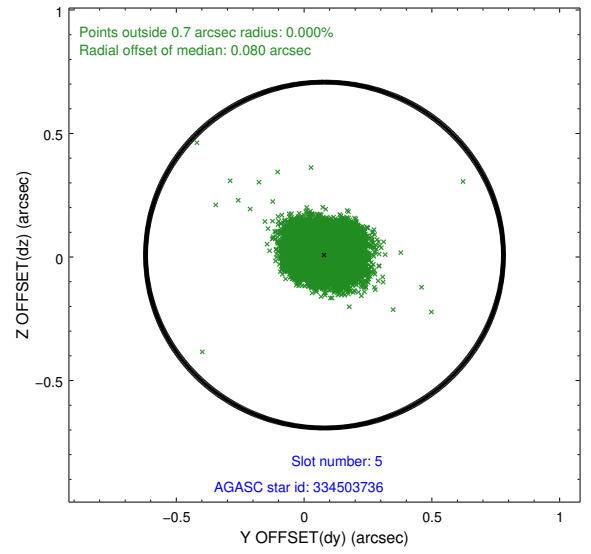
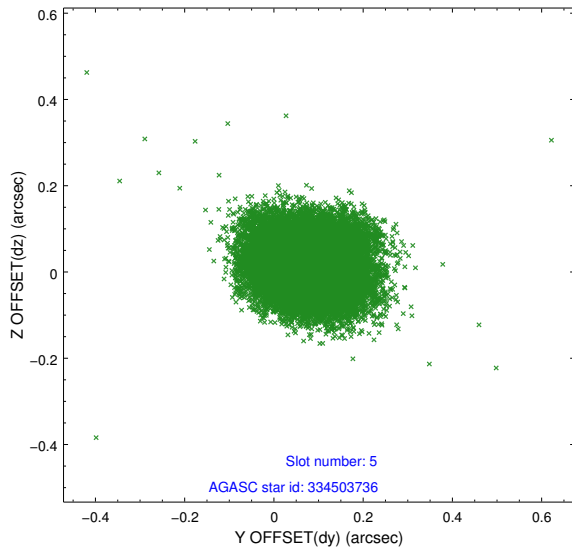
### 2.4.1 Slot 3



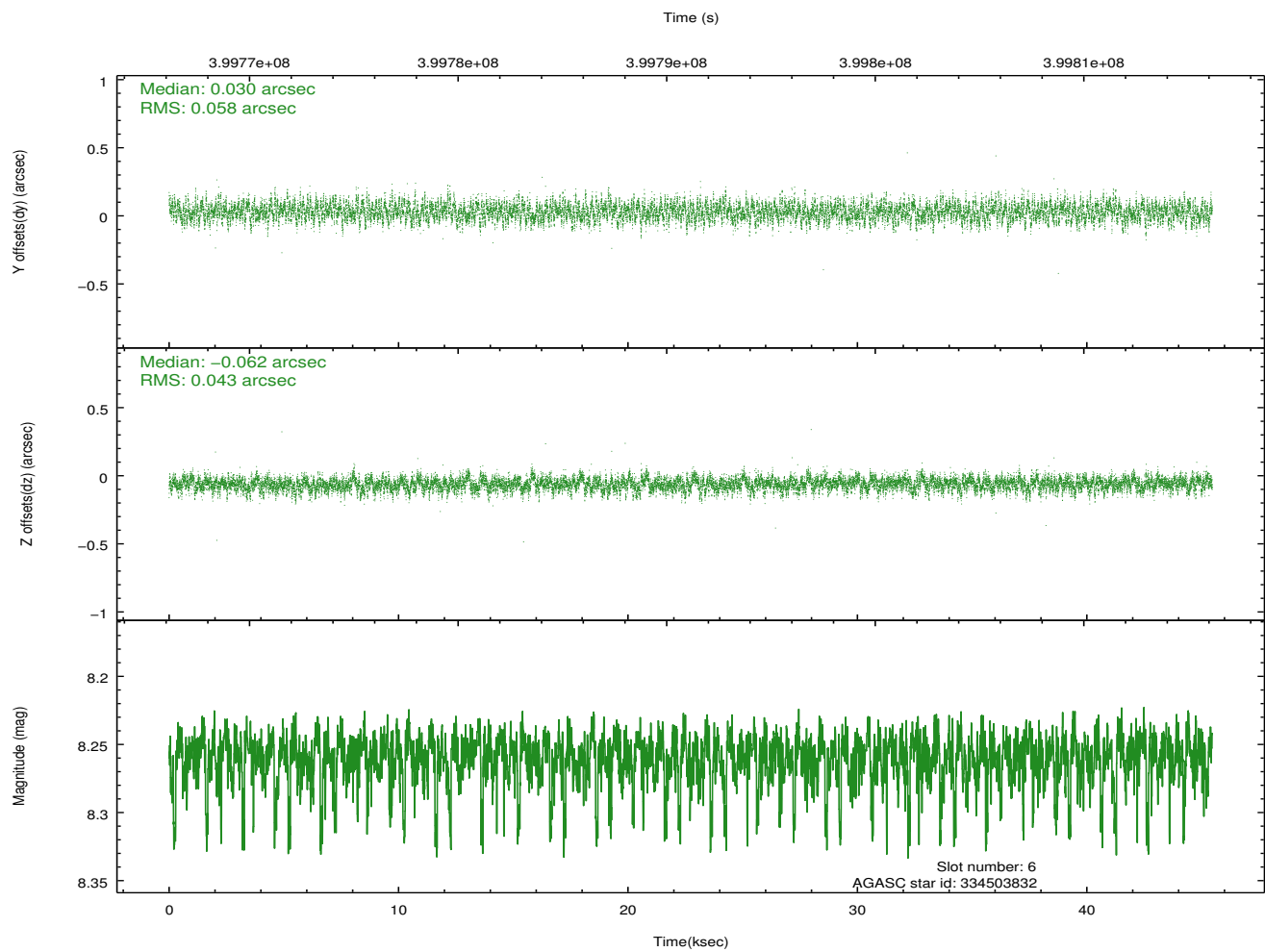
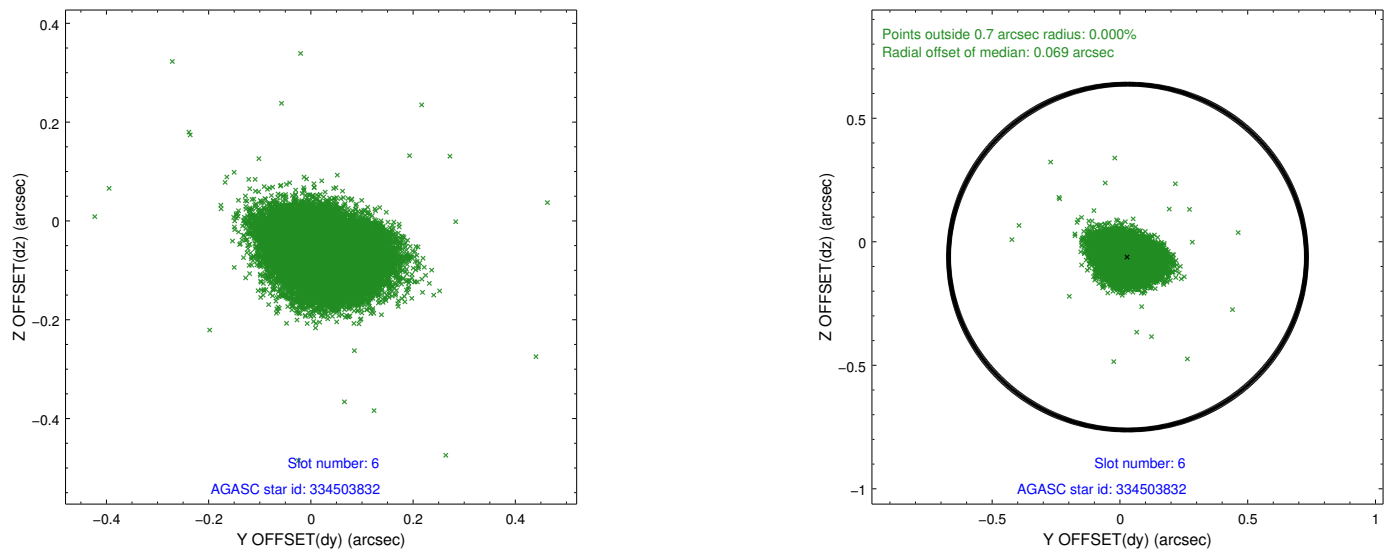
### 2.4.2 Slot 4



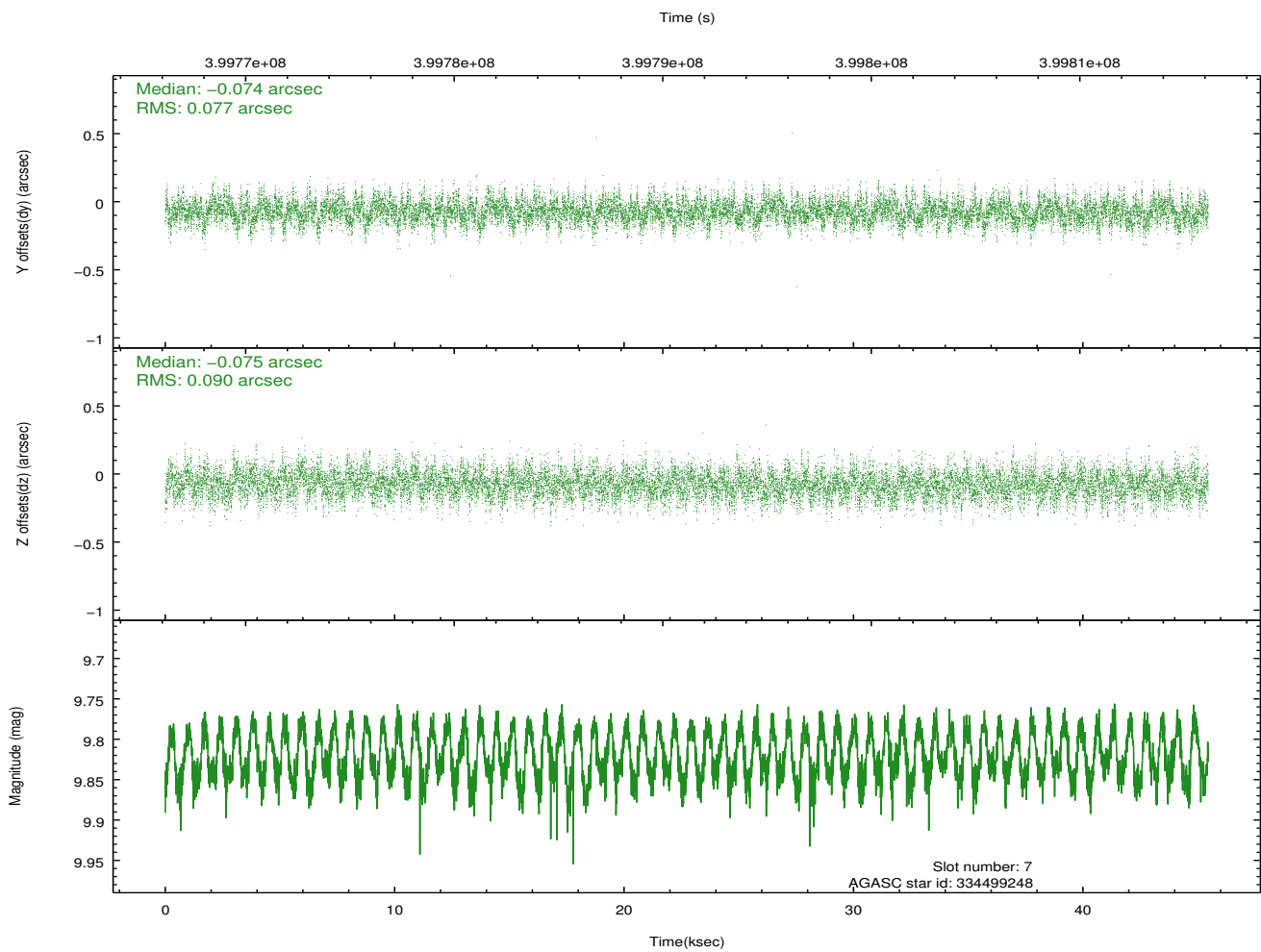
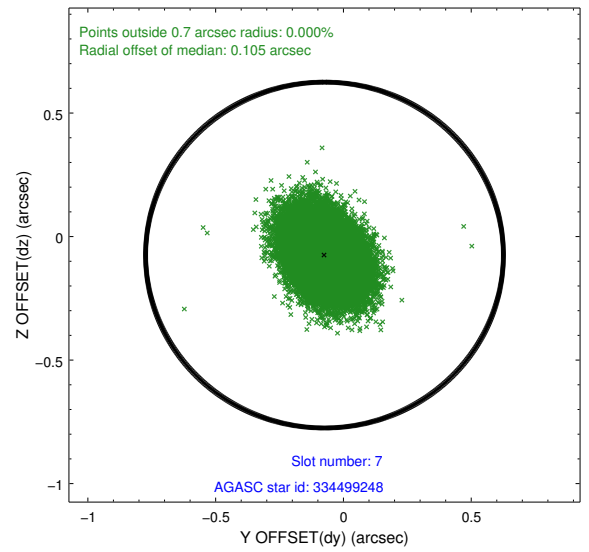
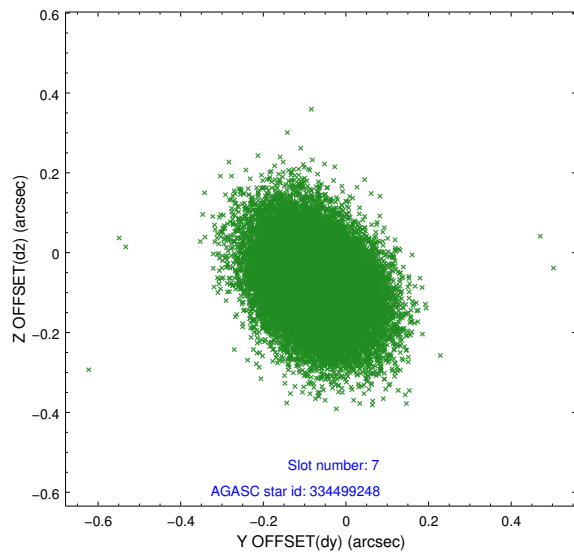
### 2.4.3 Slot 5



### 2.4.4 Slot 6

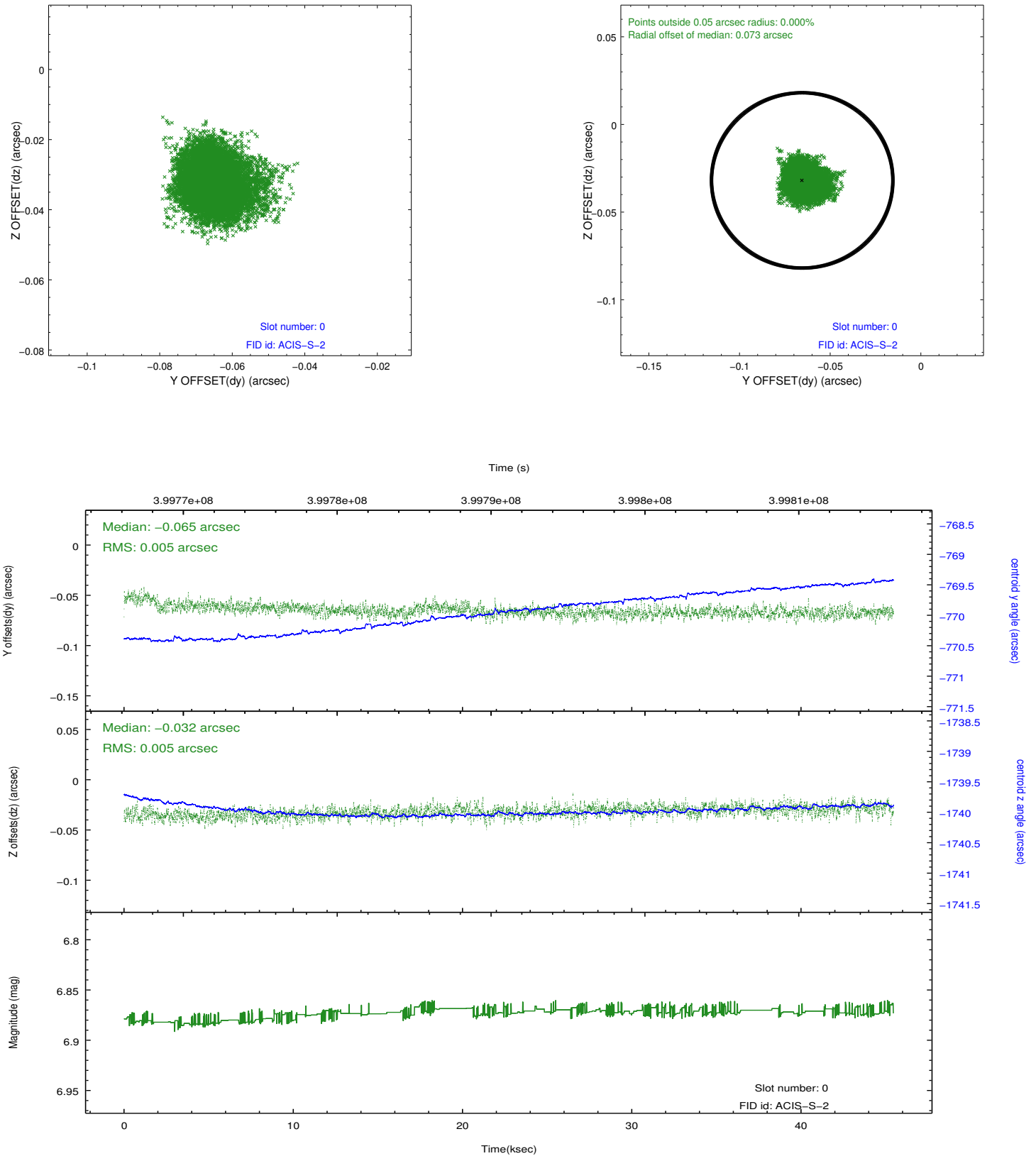


## 2.4.5 Slot 7

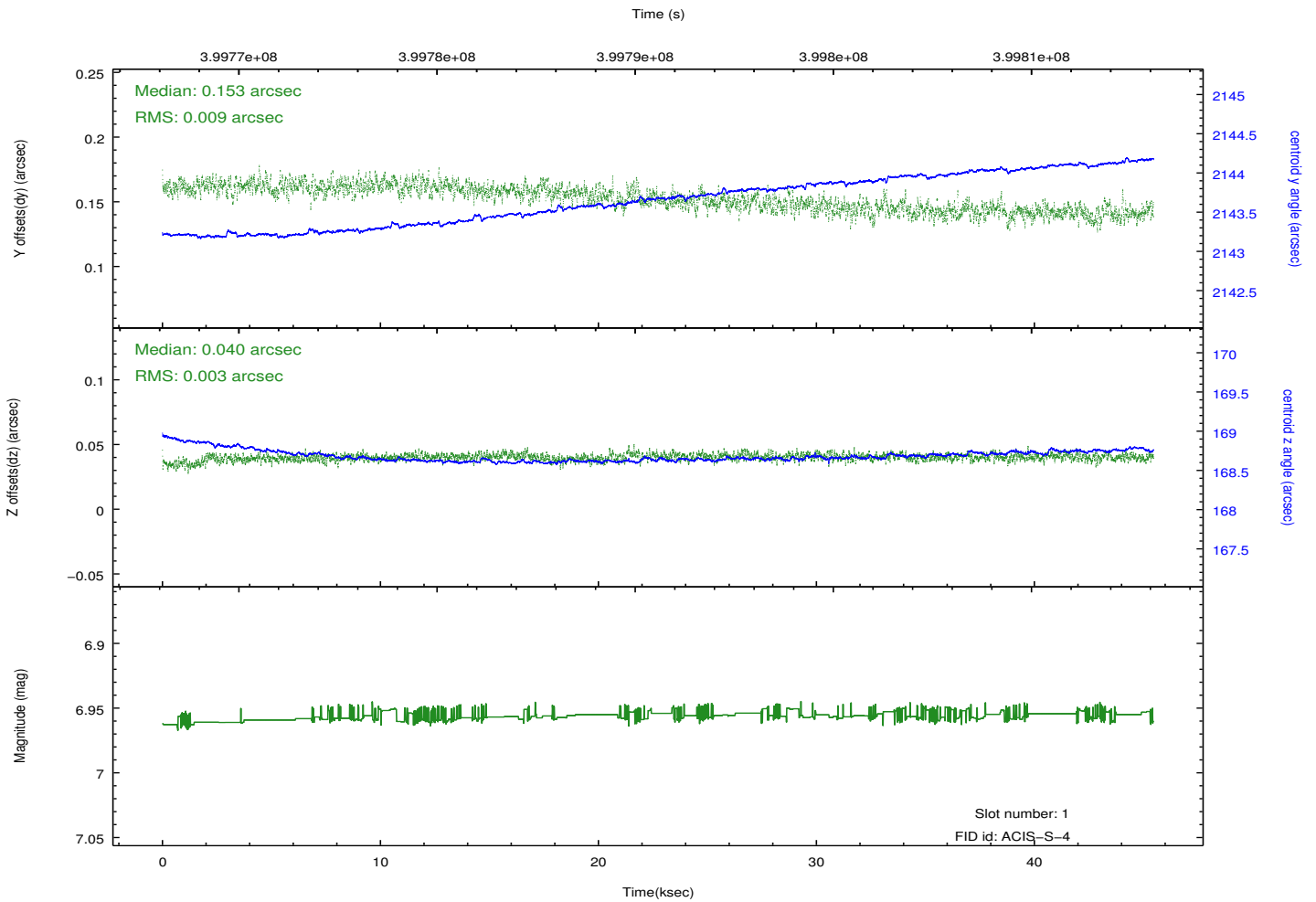
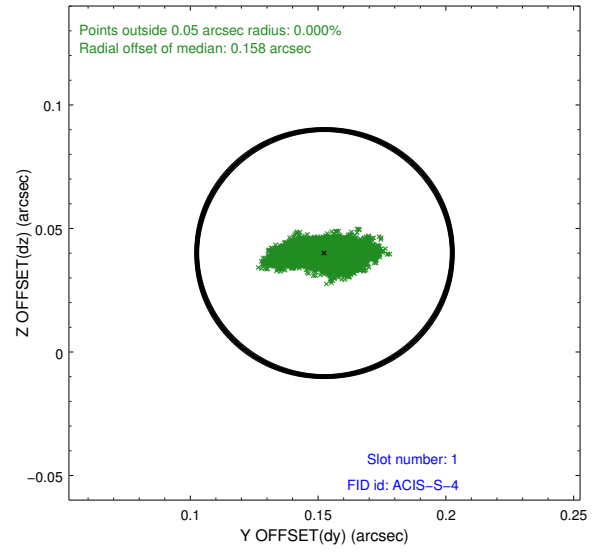
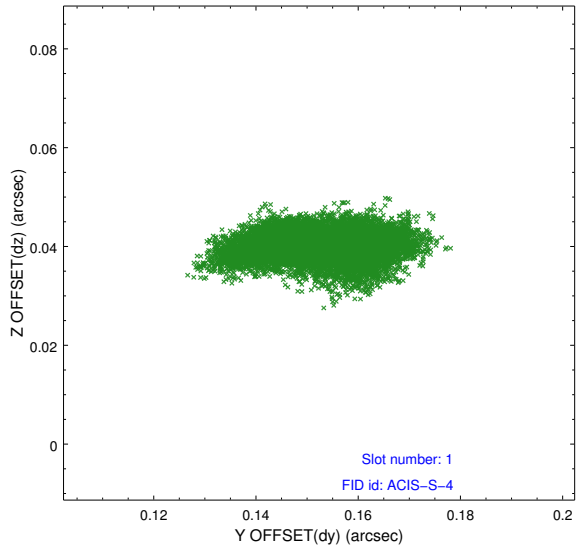


## 2.5 FID Slots

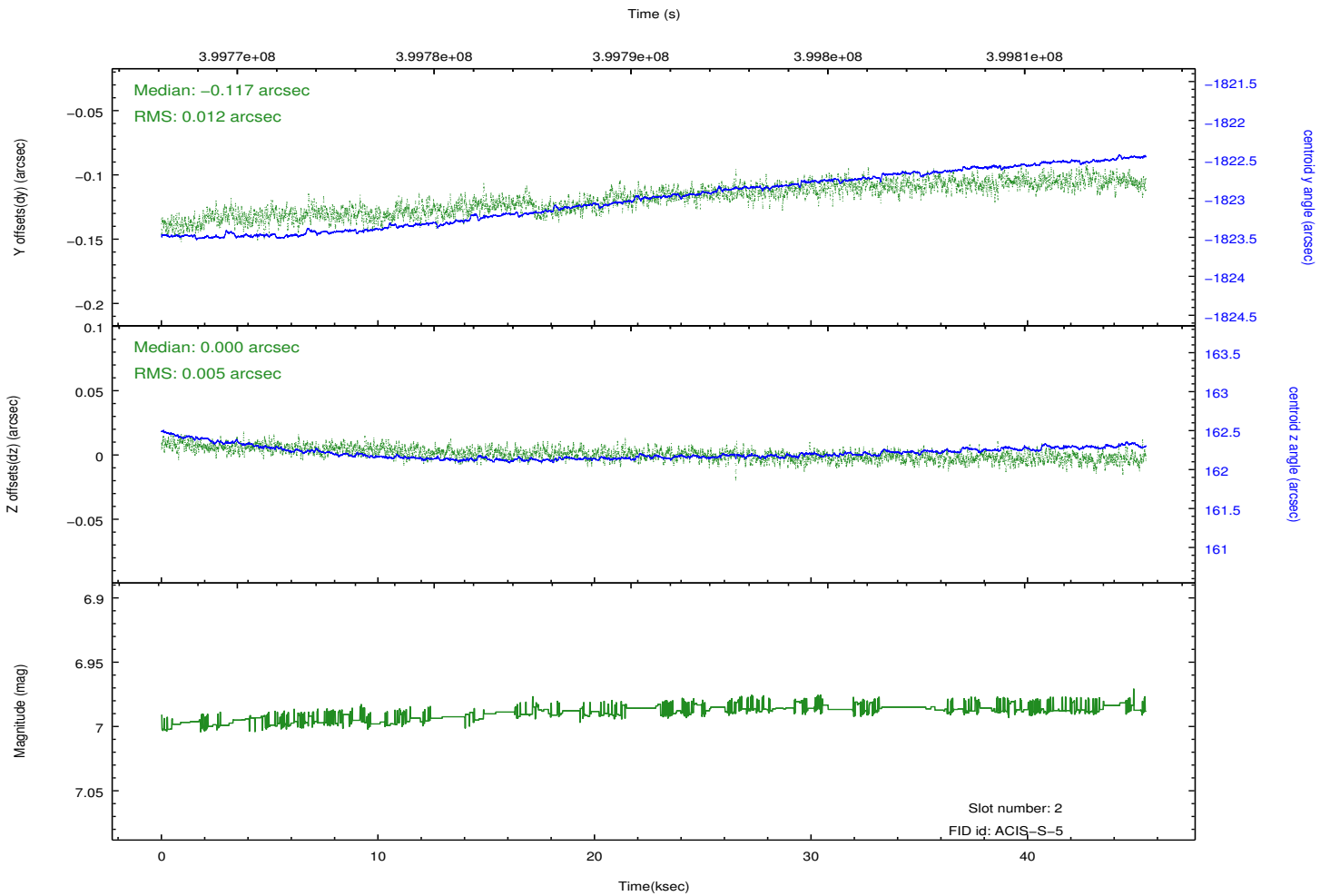
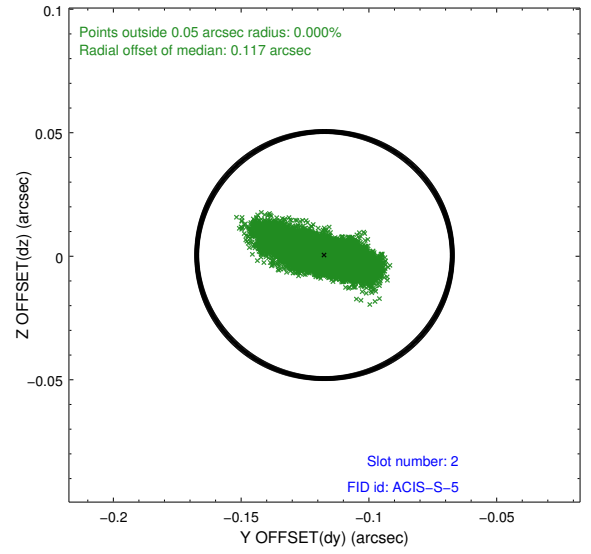
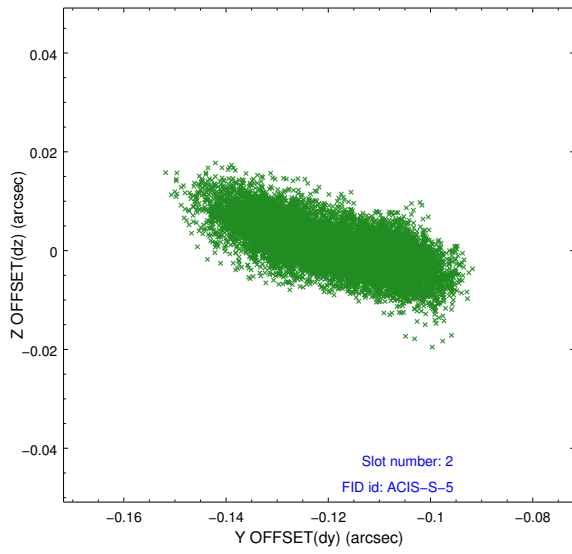
### 2.5.1 Slot 0



## 2.5.2 Slot 1



### 2.5.3 Slot 2



# A Summary

## A.1 Status

V&V Scientist	Beth Sundheim
V&V Date (YYYY-MM-DD)	2012.07.11
V&V Edition	1
V&V Disposition and Status	OK
V&V Charge Time	45.225900347829

## A.2 Comments