

V&V Reference Report

L2 ASCDS Version : 8.4.3

Observation 13178 - L2 Version 3
Chandra X-Ray Center

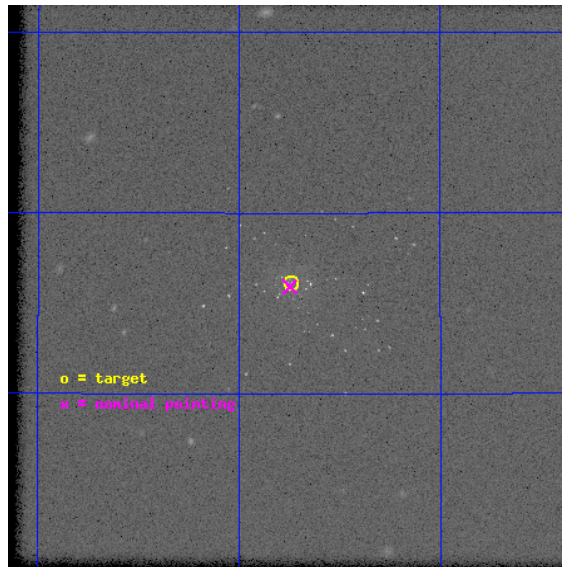
L2 Processing Date : Jul 27 2012

Contents

1	Front	2
2	OBI	3
2.1	OBI	3
2.1.1	Images	3
2.1.2	Parameters	4
2.1.3	Events	4
2.2	Compared Parameters	5
2.3	Aspect	6
2.4	Star Slots	9
2.4.1	Slot 3	9
2.4.2	Slot 4	10
2.4.3	Slot 5	11
2.4.4	Slot 6	12
2.4.5	Slot 7	13
2.5	FID Slots	14
2.5.1	Slot 0	14
2.5.2	Slot 1	15
2.5.3	Slot 2	16
A	Summary	17
A.1	Status	17
A.2	Comments	17

1 Front

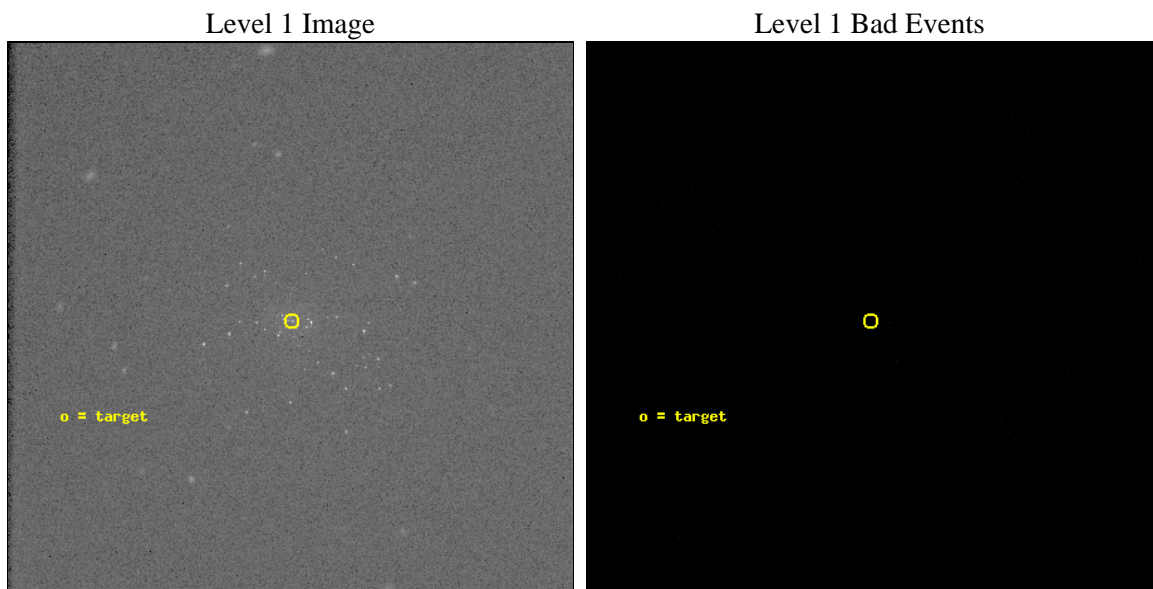
seq_num	300289	Sequence number
obs_id	13178	Observation id
title	Resolving short supersoft source states of optical novae in the core of M31	Proposal title
observer	Dr. Peter Predehl	Principal investigator
object	M31	Source name
ra_targ	10.684583	Observer's specified target RA [deg]
dec_targ	41.269278	Observer's specified target Dec [deg]
ra_nom	10.686882806967	Nominal RA [deg]
dec_nom	41.26540268539	Nominal Dec [deg]
roll_nom	315.49990833474	Nominal Roll [deg]
revision	3	Processing version of data
ontime	17655.625913799	[s]
livetime	17453.78823289	Ontime multiplied by DTCOR
l2events	1411804	Number of level 2 events



2 OBI

2.1 OBI

2.1.1 Images



2.1.2 Parameters

obi_num	0	Obi number	sched_exp_time	17500.000000	[s] Scheduled observation exposure time
ascdsver	8.4.5	Processing system revision	ontime	17655.625913799	[s]
caldbver	4.5.1	 	l1events	2106111	Number of level 1 events
date	2012-07-27T20:14:46	Date and time of file creation			
revision	3	Processing version of data			

2.1.3 Events

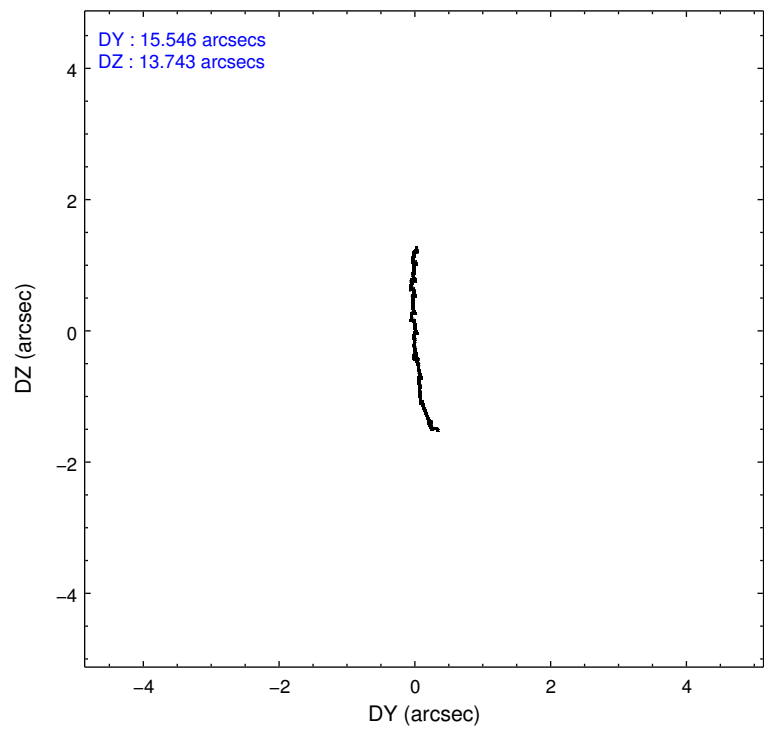
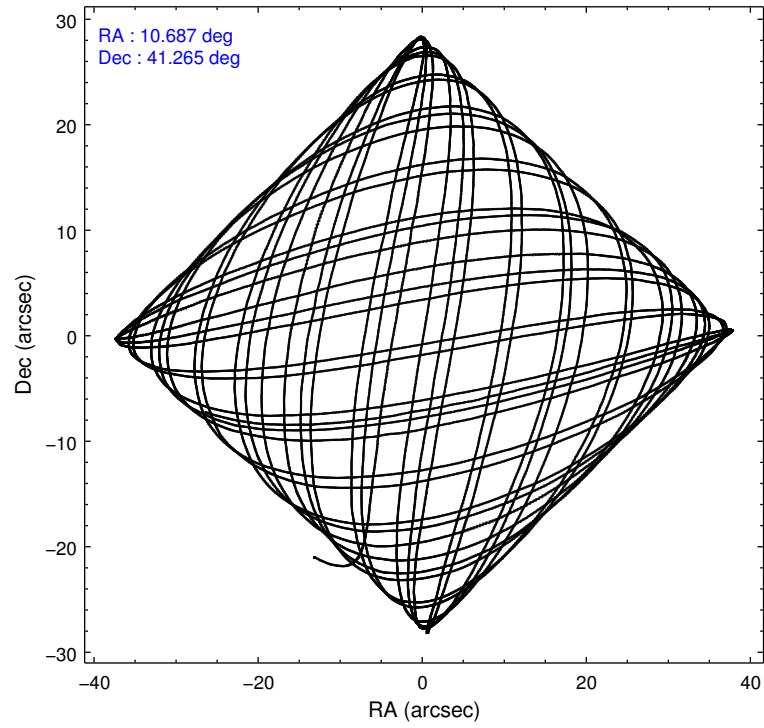
Level 1 Events

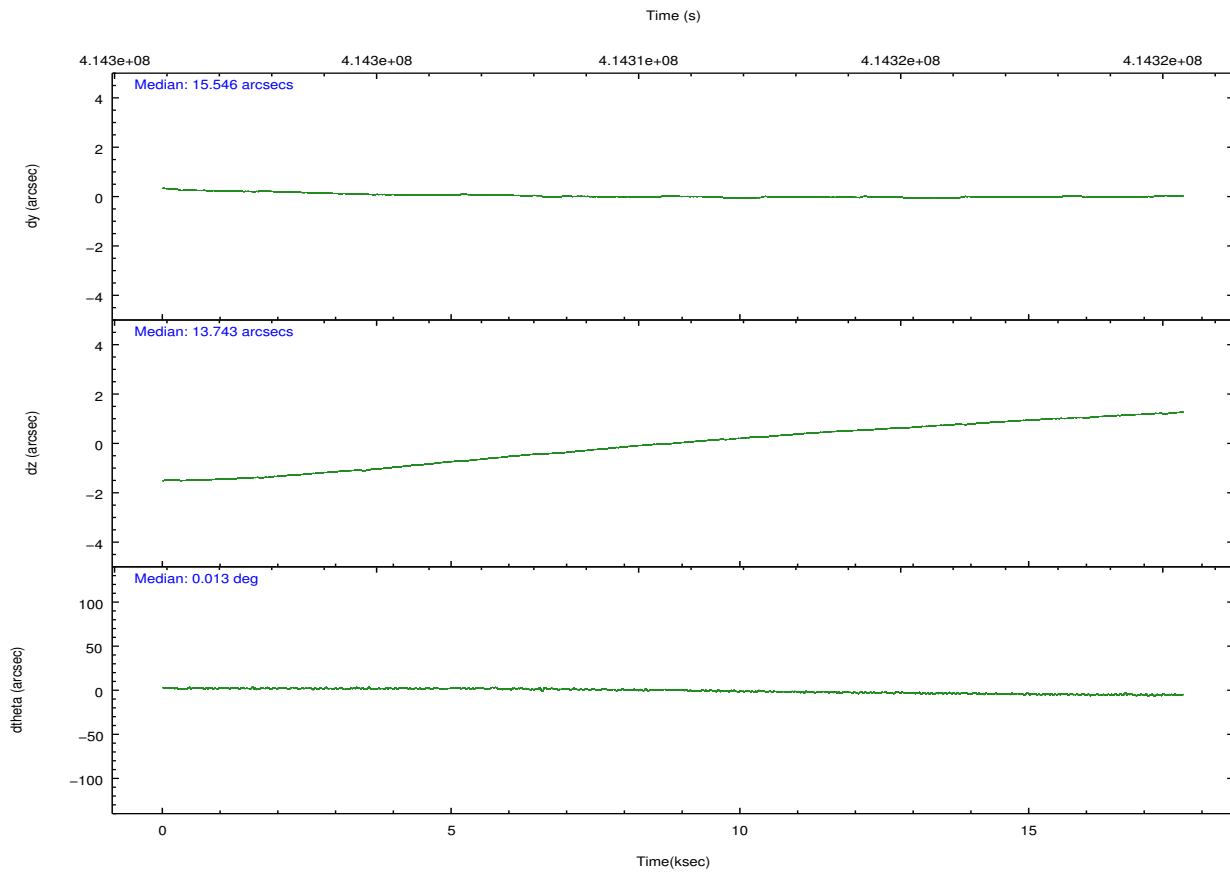
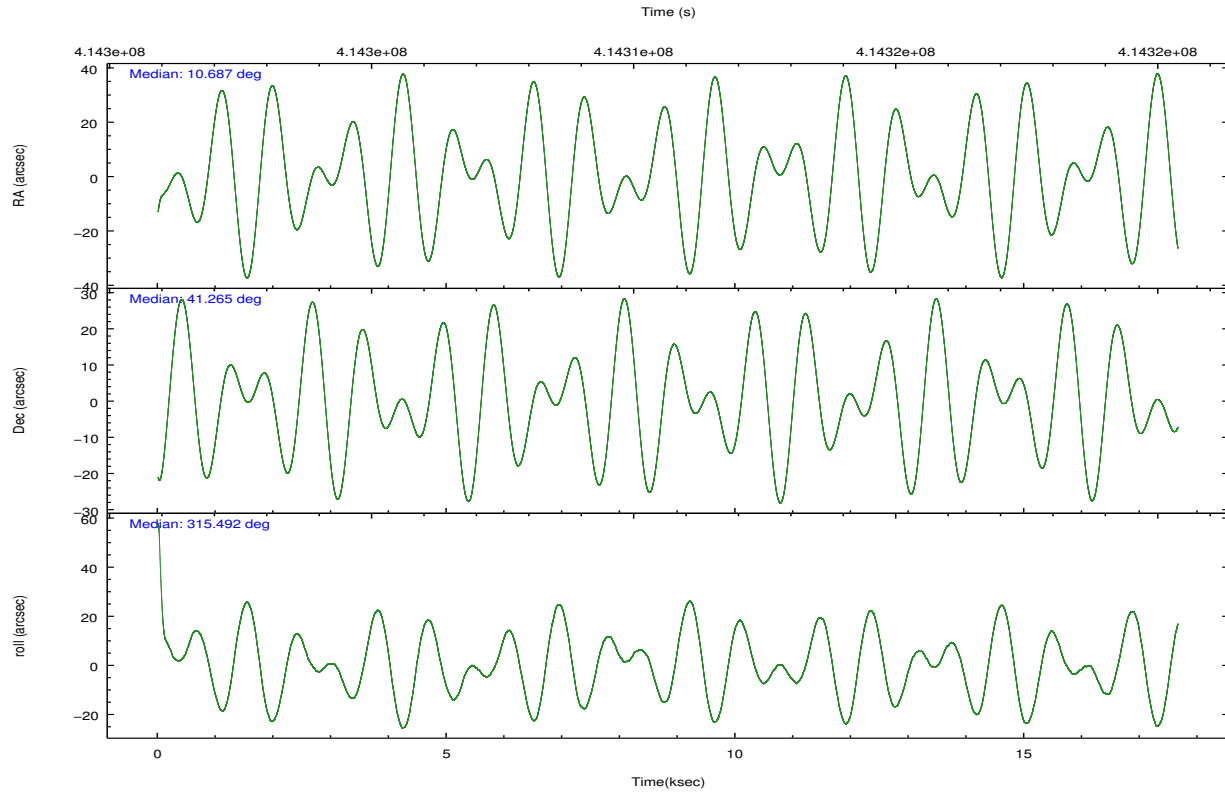
	segment 0
level 1 events	2106111
rejected events	125970
rejected %	5%

2.2 Compared Parameters

Parameter	Planned	Actual	Parameter	Planned	Actual
Instrument	HRC	HRC	Obspar format version number	7	7
Detector	HRC-I	HRC-I	Obspar file type	PREDICTED	ACTUAL
Grating	NONE	NONE	Obspar update status	NONE	UPDATED
Data mode	OBSERVING	OBSERVING			
Observation mode	POINTING	POINTING			
[deg] Pointing RA	10.651619	10.68688280696662			
[deg] Pointing Dec	41.271614	41.26540268538974			
[deg] Pointing Roll	315.618625	315.4999083347424			
[s] Window start time (MET)	414115266.184000	414115266.184000			
[s] Window stop time (MET)	416016066.184000	416016066.184000			
[mm] SIM focus pos	-1.040293	-1.038866356238299			
[mm] SIM defocus	0	0.001426264420575141			
[mm] SIM translation stage pos	126.985494	126.9829799899862			
[mm] SIM translation stage offset	0	0.002508901615314585			
[s] Observation start time (MET)	414301995.184000	414300746.52074			
Observation start date	2011-02-17T03:52:09	2011-02-17T03:32:26			
[s] Observation end time (MET)	414319495.184000	414320800.64678			
Observation end date	2011-02-17T08:43:49	2011-02-17T09:06:40			

2.3 Aspect



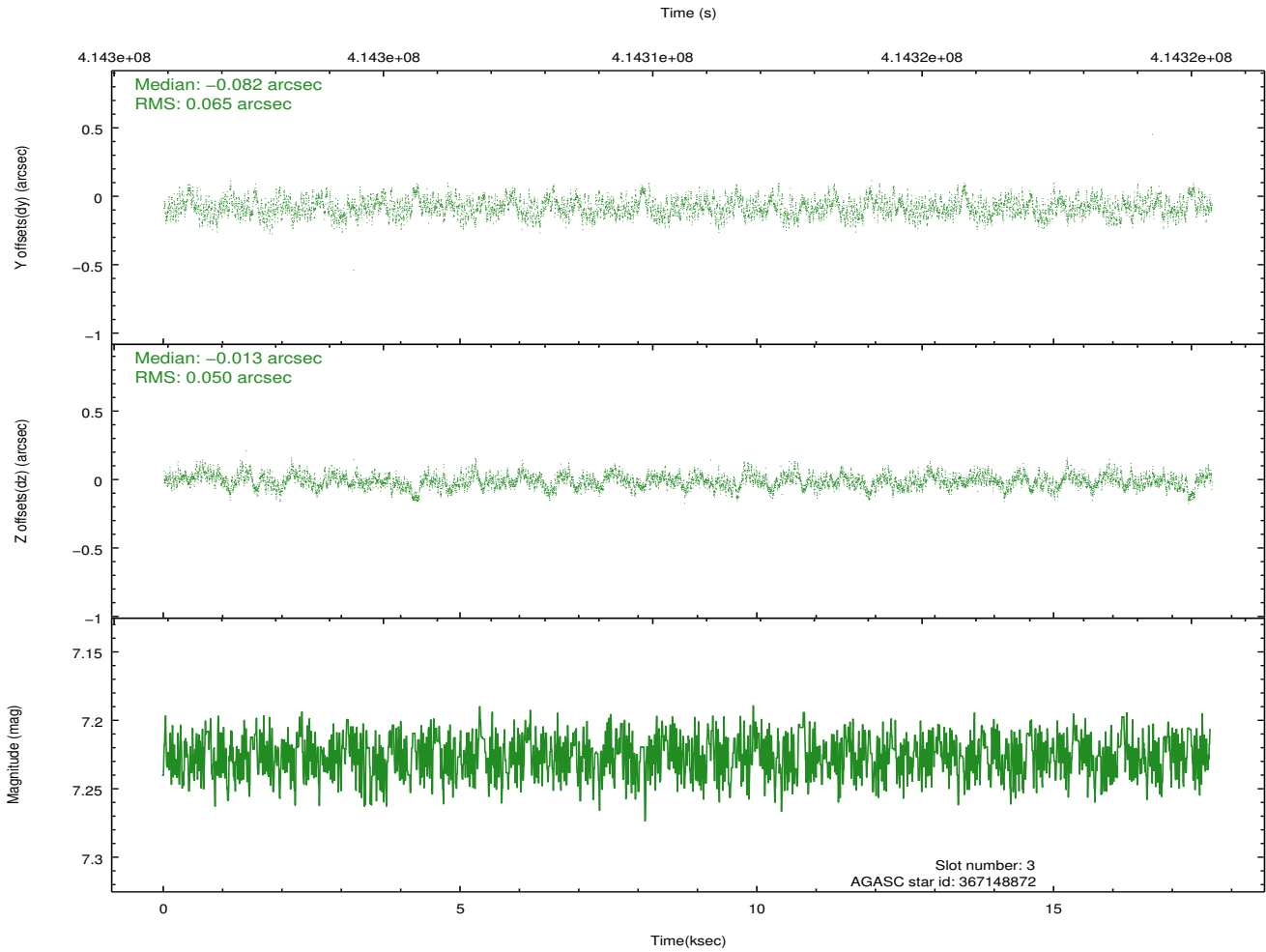
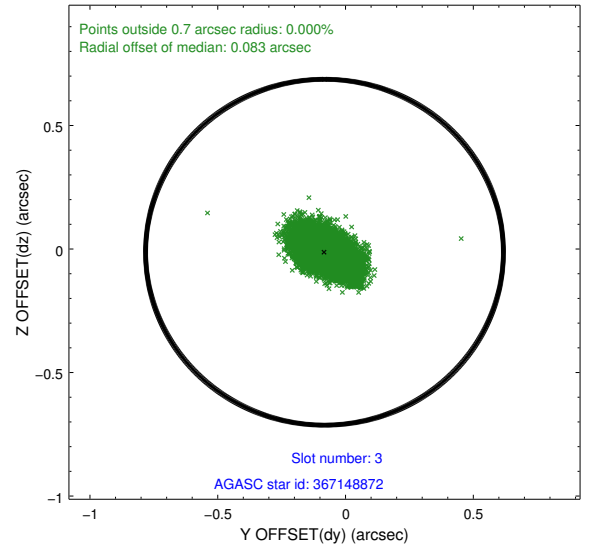
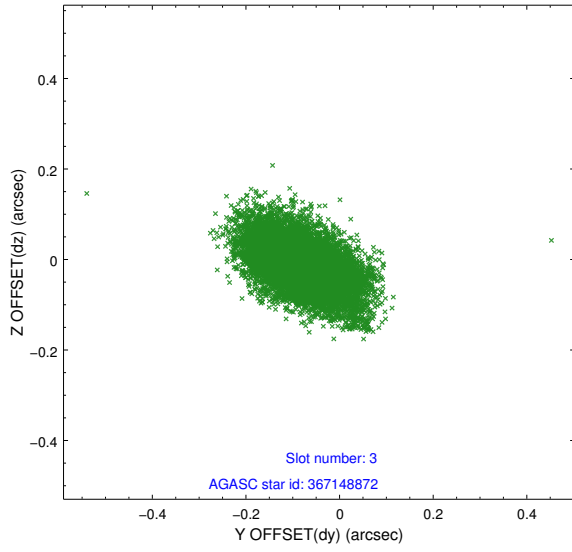


Slot Statistics

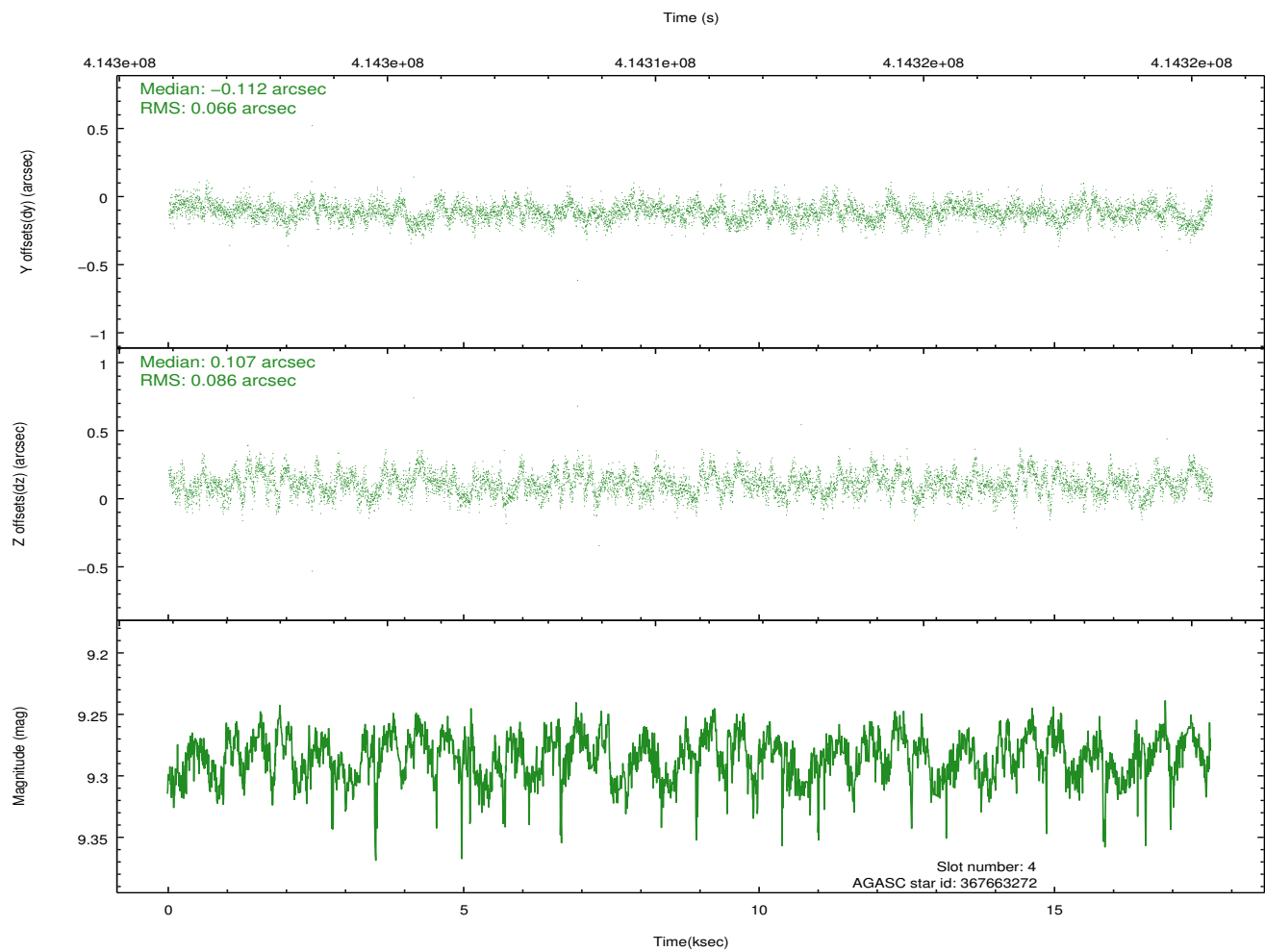
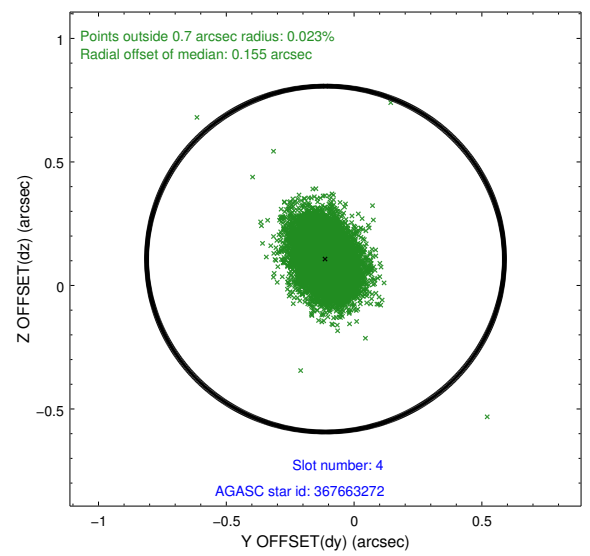
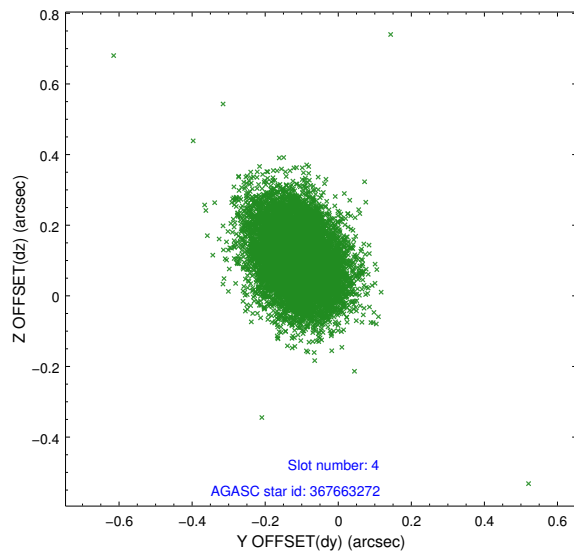
slot	status	id	mag	n_pts	med_dy	med_dz	dr1	dr2	ra	dec	mean_y	mean_z
0	FID	HRC-I-1	6.96	4307	-0.114	-0.029	0.023	0.040	0.000000	0.000000	-771.61	-1301.69
1	FID	HRC-I-2	7.00	4307	0.185	-0.071	0.020	0.029	0.000000	0.000000	841.14	-1303.70
2	FID	HRC-I-4	6.97	4307	0.042	0.012	0.016	0.030	0.000000	0.000000	1271.69	1000.09
3	GUIDE	367148872	7.23	8614	-0.082	-0.013	0.086	0.146	10.505940	40.688258	1185.26	-1779.24
4	GUIDE	367663272	9.28	8598	-0.112	0.107	0.115	0.186	10.656279	41.699429	-1068.50	1108.39
5	GUIDE	367674552	8.85	8598	-0.073	0.039	0.099	0.159	11.016238	41.570845	-53.03	1458.46
6	GUIDE	367145856	9.29	8612	0.223	-0.184	0.137	0.227	10.744946	40.402085	2372.95	-2058.15
7	GUIDE	367657272	8.42	8610	0.039	0.048	0.072	0.117	11.834471	41.298907	2202.73	2323.57

2.4 Star Slots

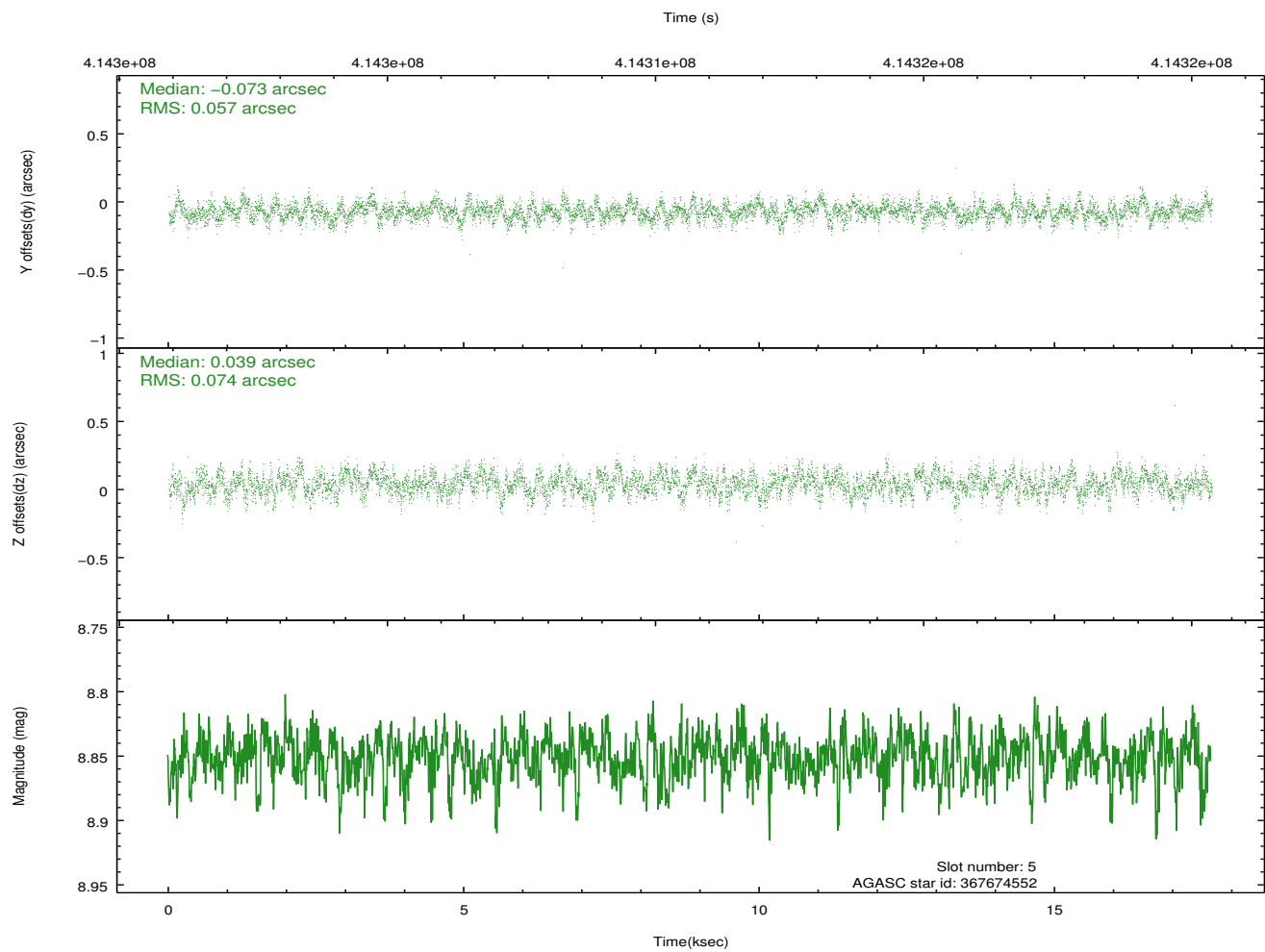
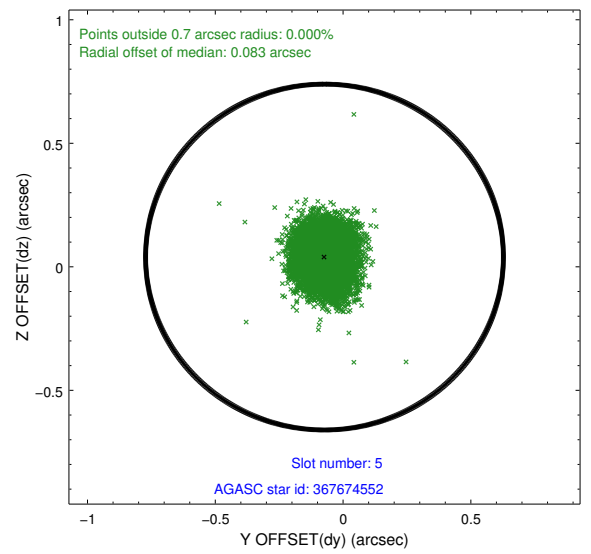
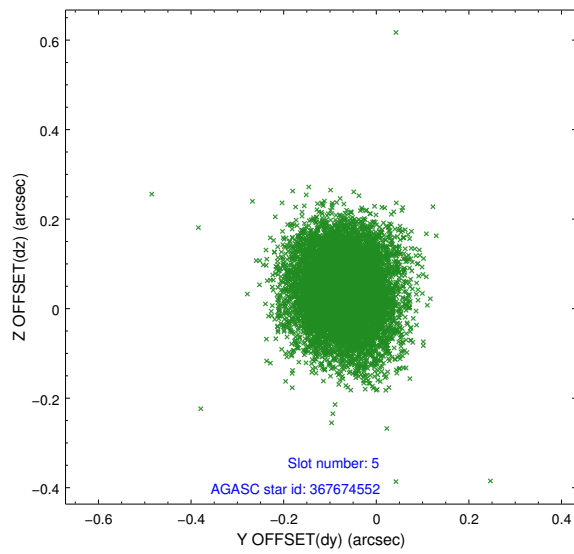
2.4.1 Slot 3



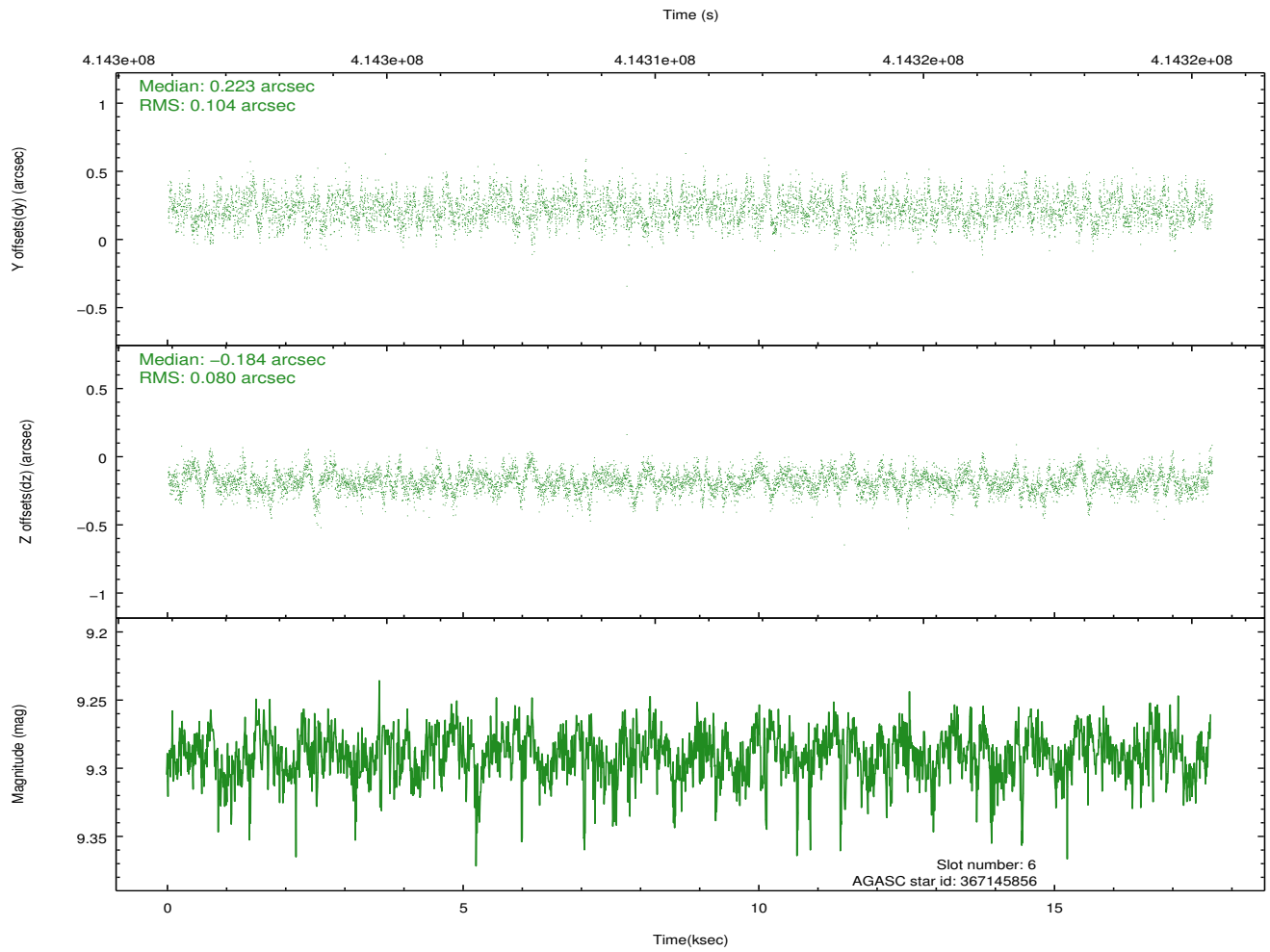
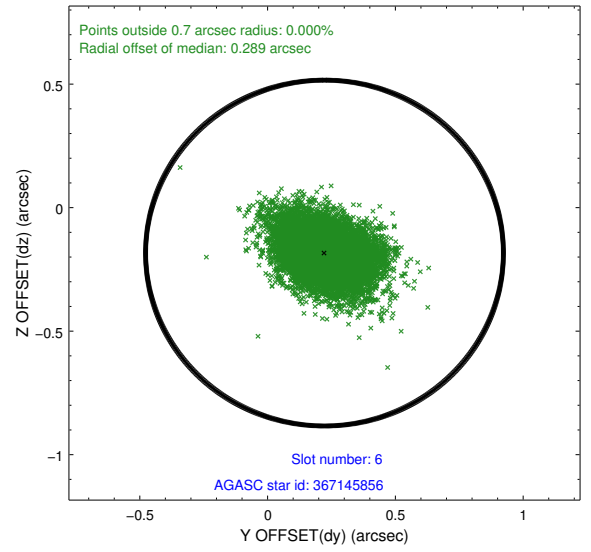
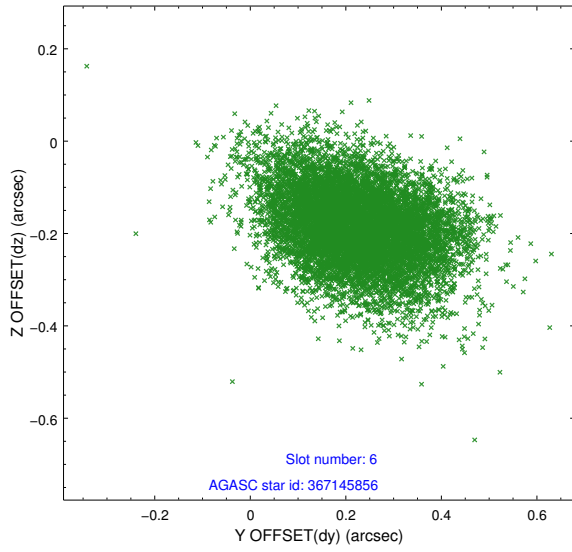
2.4.2 Slot 4



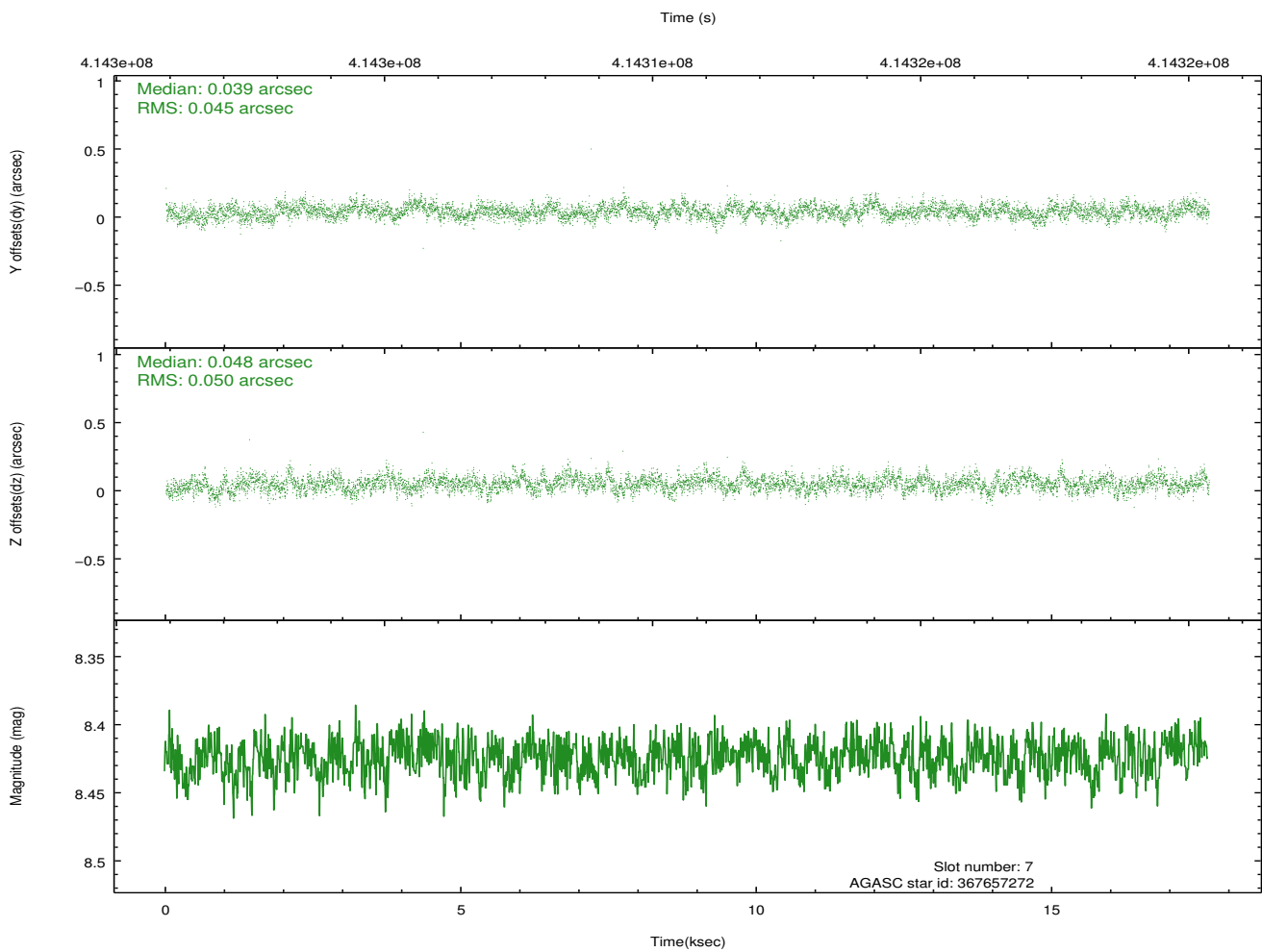
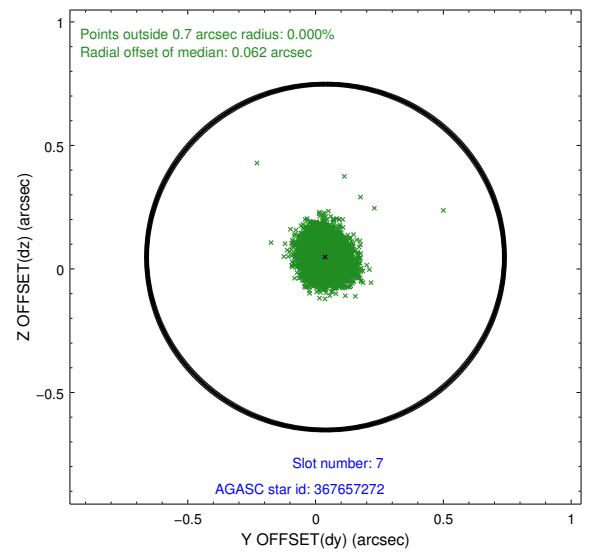
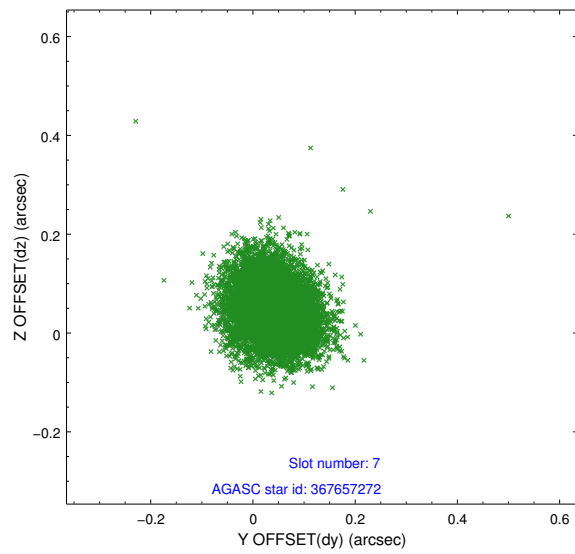
2.4.3 Slot 5



2.4.4 Slot 6

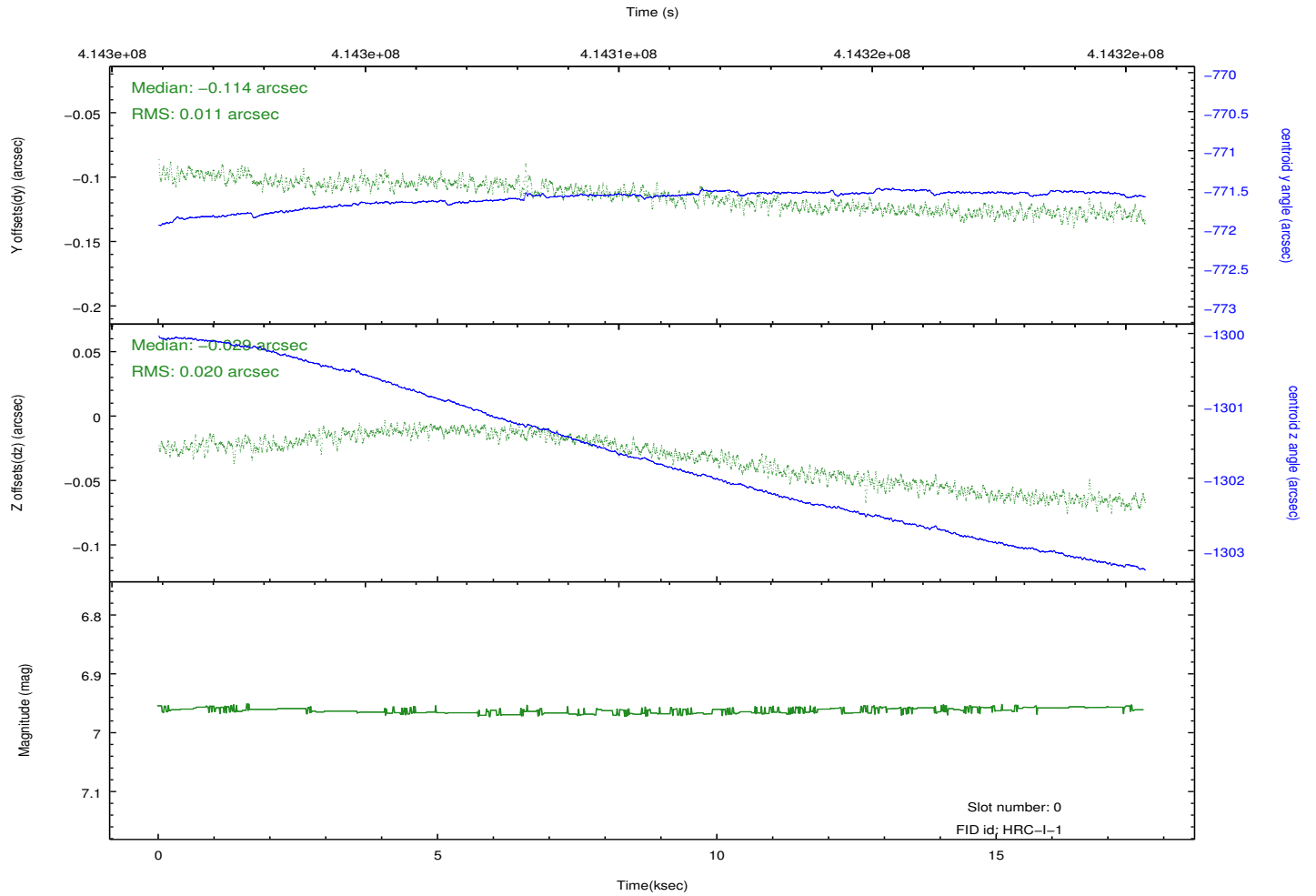
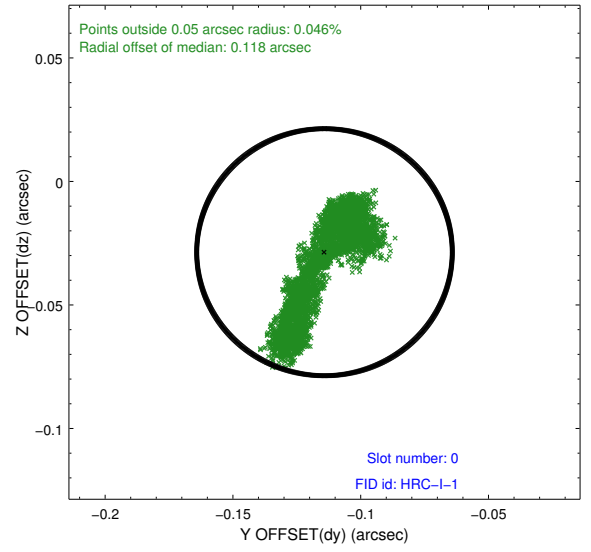
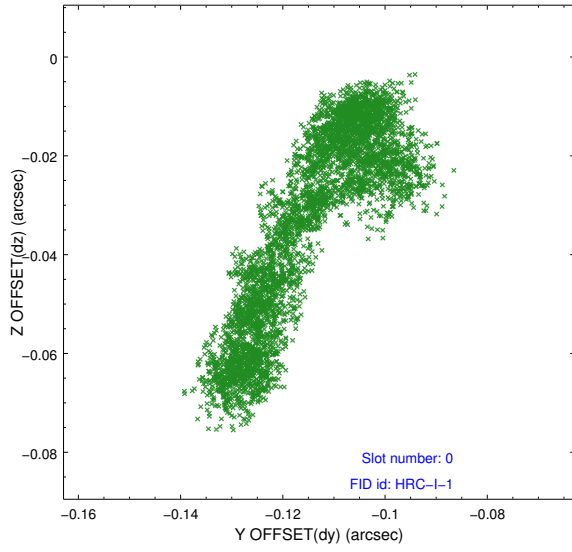


2.4.5 Slot 7

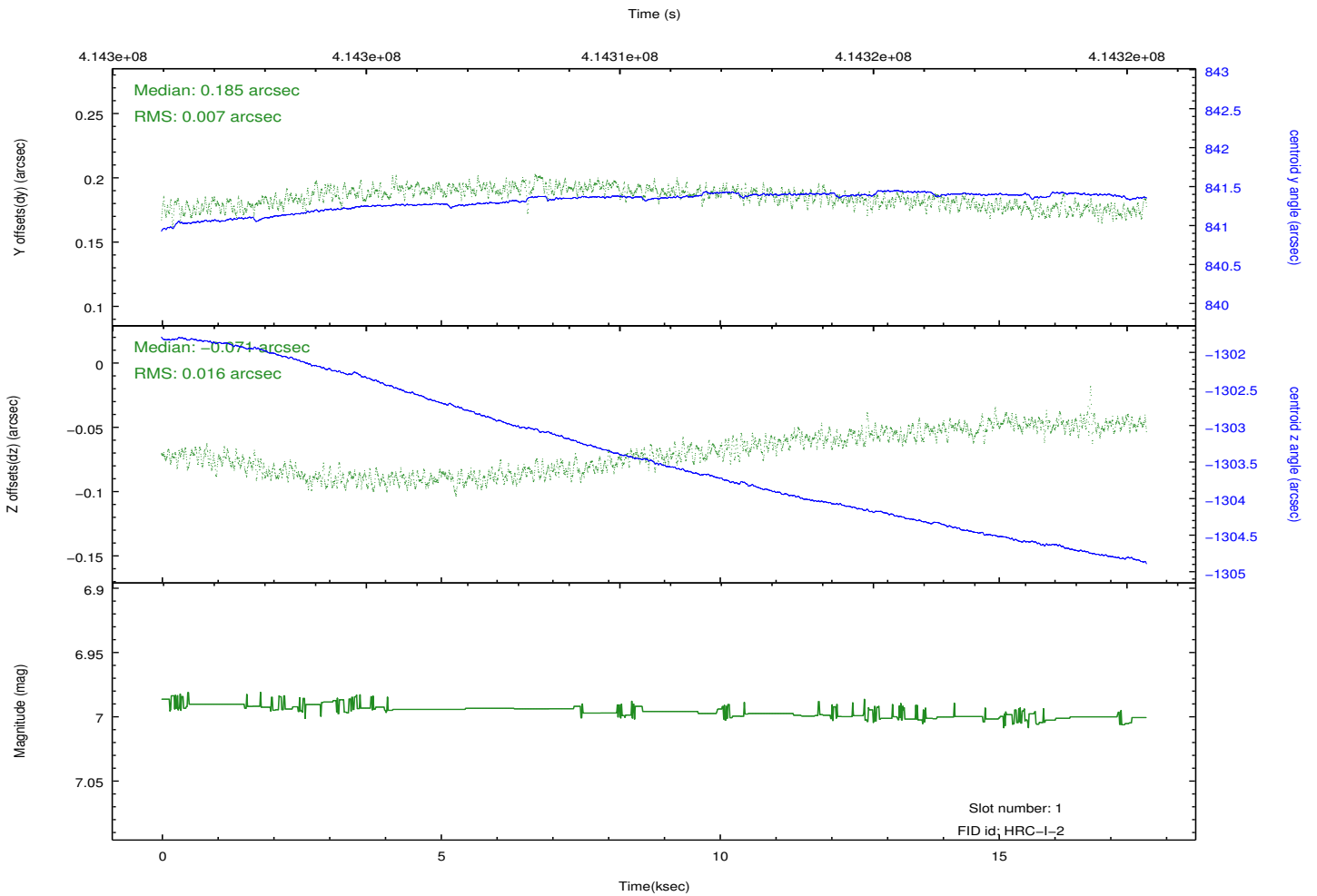
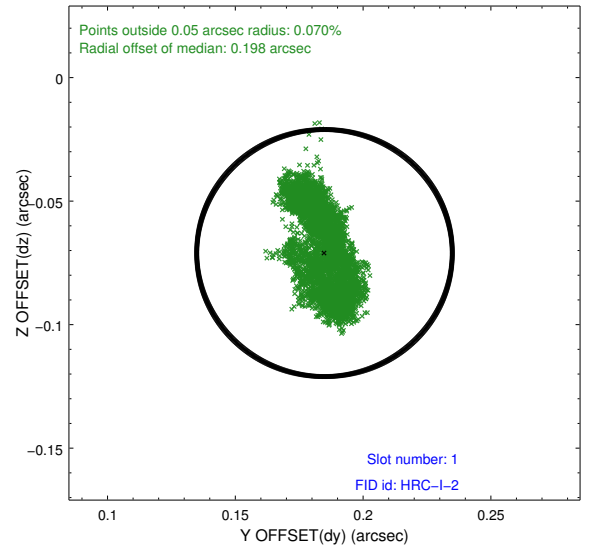
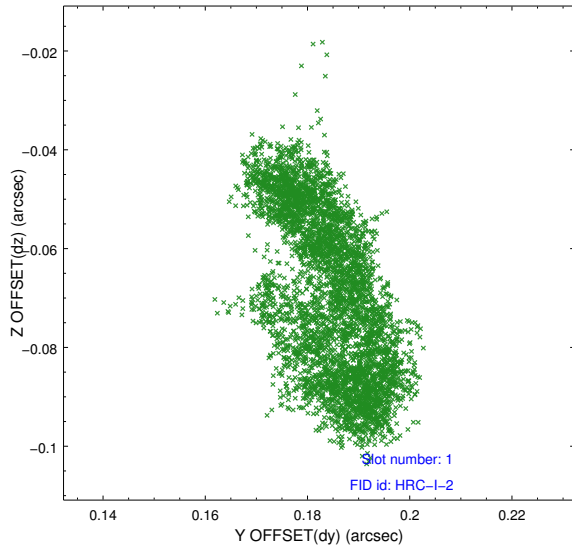


2.5 FID Slots

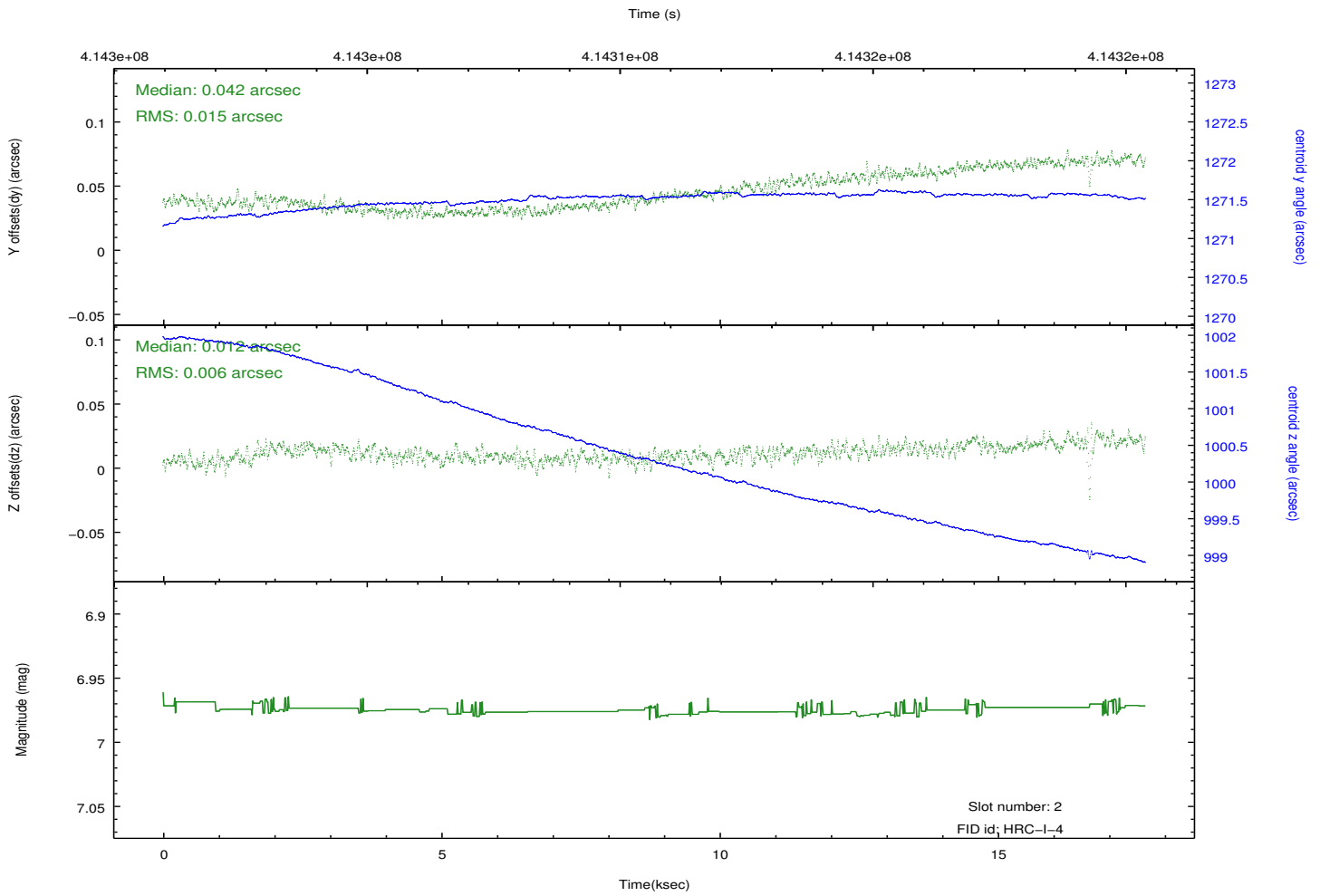
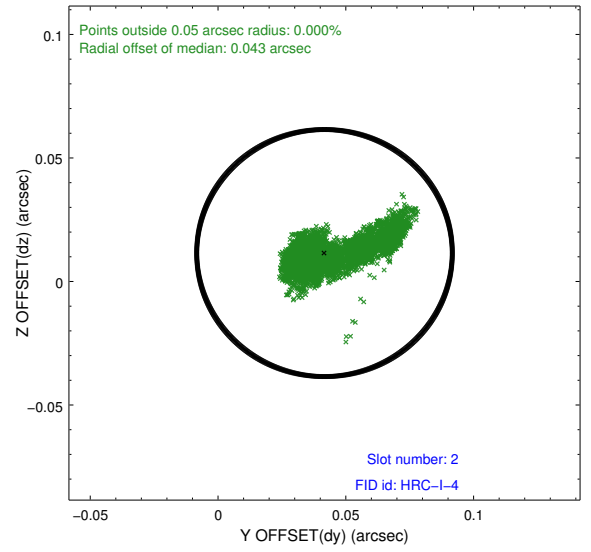
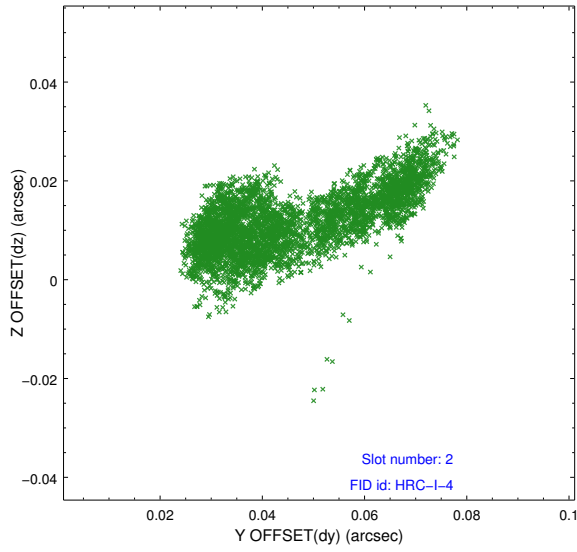
2.5.1 Slot 0



2.5.2 Slot 1



2.5.3 Slot 2



A Summary

A.1 Status

V&V Scientist	Beth Sundheim
V&V Date (YYYY-MM-DD)	2012.07.29
V&V Edition	1
V&V Disposition and Status	OK
V&V Charge Time	17.655625914097

A.2 Comments

Window preference met.