

# V&V Reference Report

## L2 ASCDS Version : 8.4.3

Observation 13228 - L2 Version 3  
Chandra X-Ray Center

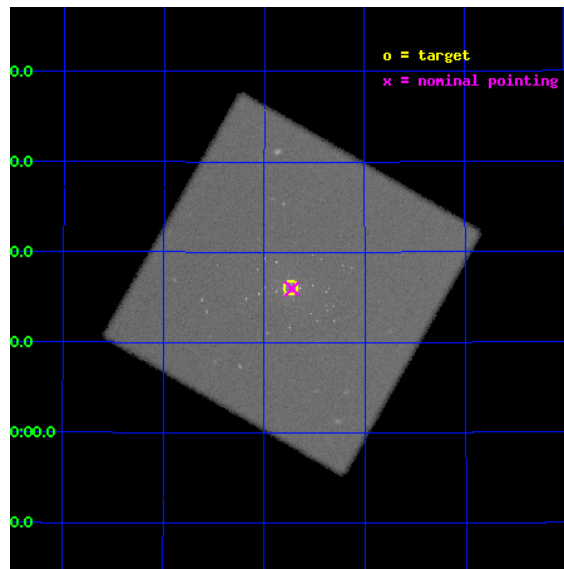
L2 Processing Date : Jul 28 2012

## Contents

<b>1</b>	<b>Front</b>	<b>2</b>
<b>2</b>	<b>OBI</b>	<b>3</b>
2.1	OBI . . . . .	3
2.1.1	Images . . . . .	3
2.1.2	Parameters . . . . .	4
2.1.3	Events . . . . .	4
2.2	Compared Parameters . . . . .	5
2.3	Aspect . . . . .	6
2.4	Star Slots . . . . .	9
2.4.1	Slot 3 . . . . .	9
2.4.2	Slot 4 . . . . .	10
2.4.3	Slot 5 . . . . .	11
2.4.4	Slot 6 . . . . .	12
2.4.5	Slot 7 . . . . .	13
2.5	FID Slots . . . . .	14
2.5.1	Slot 0 . . . . .	14
2.5.2	Slot 1 . . . . .	15
2.5.3	Slot 2 . . . . .	16
<b>A</b>	<b>Summary</b>	<b>17</b>
A.1	Status . . . . .	17
A.2	Comments . . . . .	17

# 1 Front

seq_num	300293	Sequence number
obs_id	13228	Observation id
title	Resolving short supersoft source states of optical novae in the core of M31	Proposal title
observer	Dr. Wolfgang Pietsch	Principal investigator
object	M31	Source name
ra_targ	10.684583	Observer's specified target RA [deg]
dec_targ	41.269278	Observer's specified target Dec [deg]
ra_nom	10.681218350346	Nominal RA [deg]
dec_nom	41.265867238113	Nominal Dec [deg]
roll_nom	254.80119777816	Nominal Roll [deg]
revision	3	Processing version of data
ontime	19189.282260954	[s]
livetime	19003.14738432	Ontime multiplied by DTCOR
l2events	1334402	Number of level 2 events

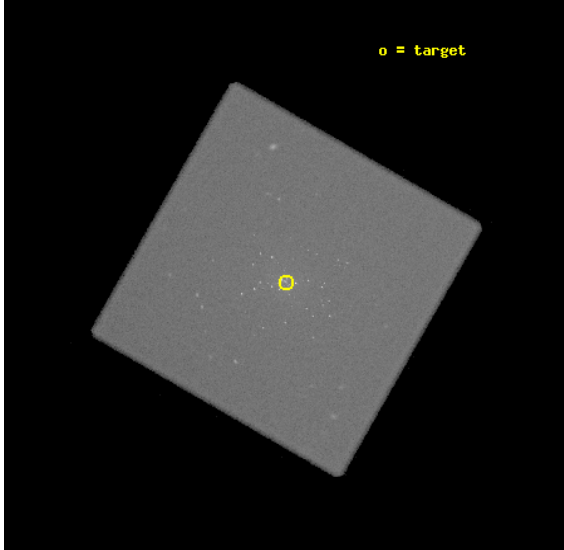


## 2 OBI

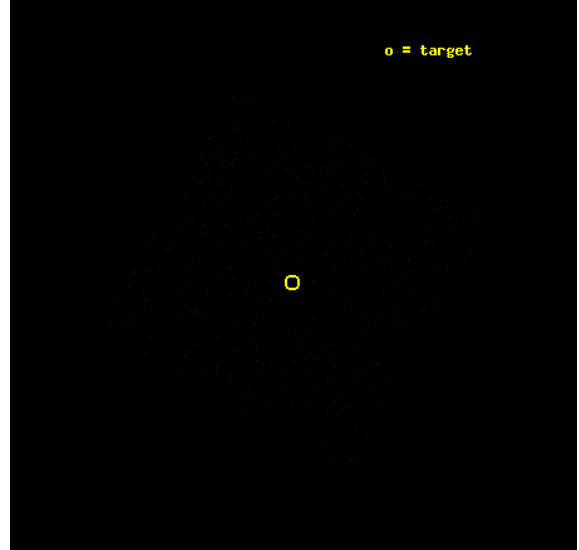
### 2.1 OBI

#### 2.1.1 Images

Level 1 Image



Level 1 Bad Events



### 2.1.2 Parameters

obi_num	1	Obi number	sched_exp_time	19000.000000	[s] Scheduled observation exposure time
ascdsver	8.4.5	Processing system revision	ontime	19189.282260954	[s]
caldbver	4.5.1	&#160	l1events	1854647	Number of level 1 events
date	2012-07-28T06:34:28	Date and time of file creation			
revision	3	Processing version of data			

### 2.1.3 Events

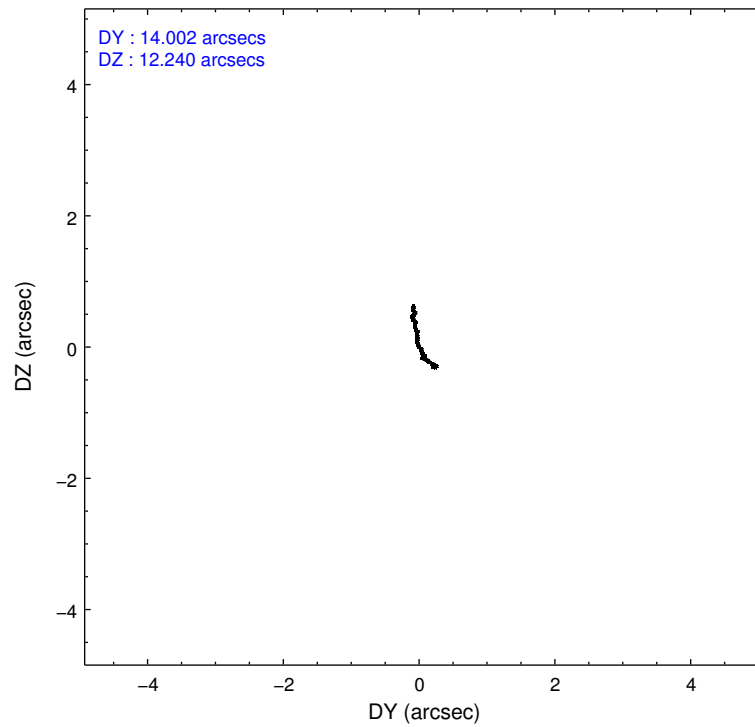
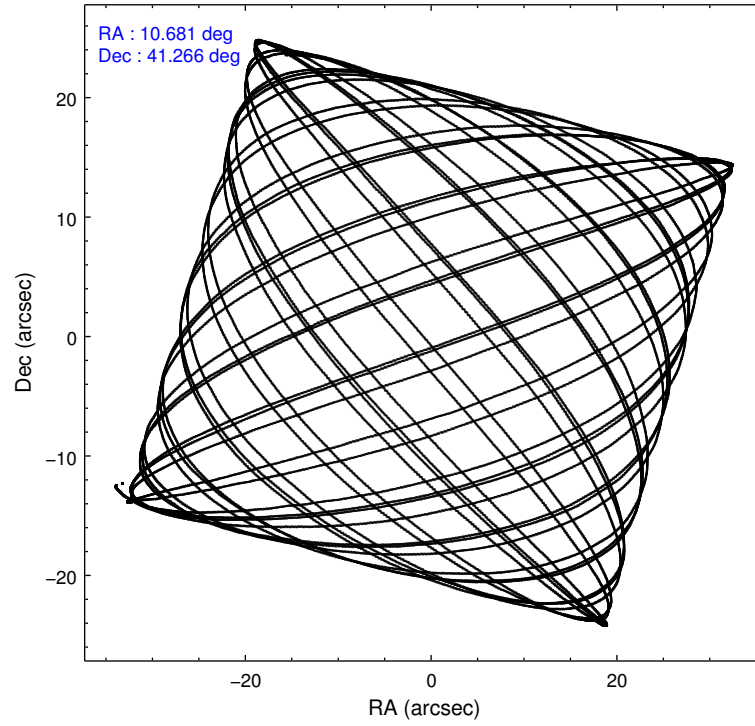
#### Level 1 Events

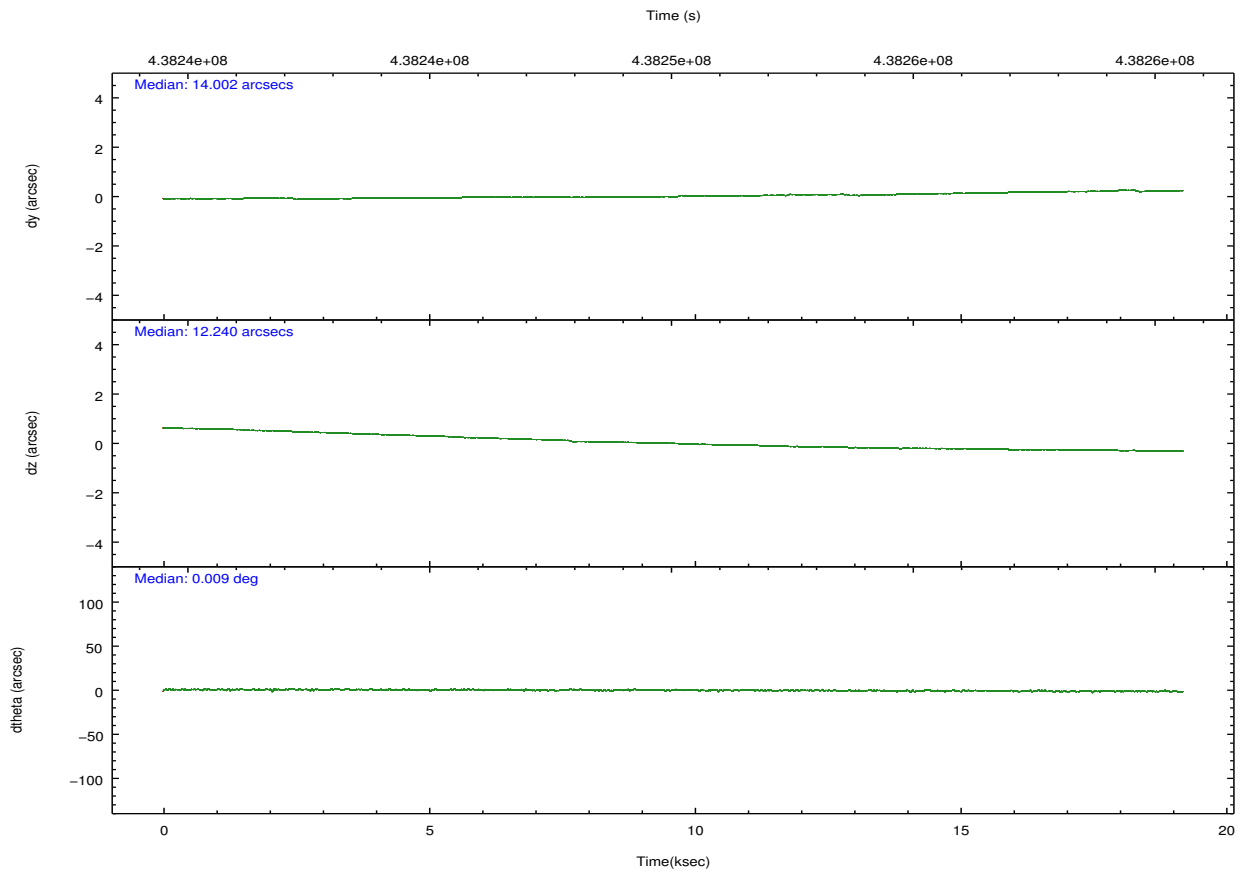
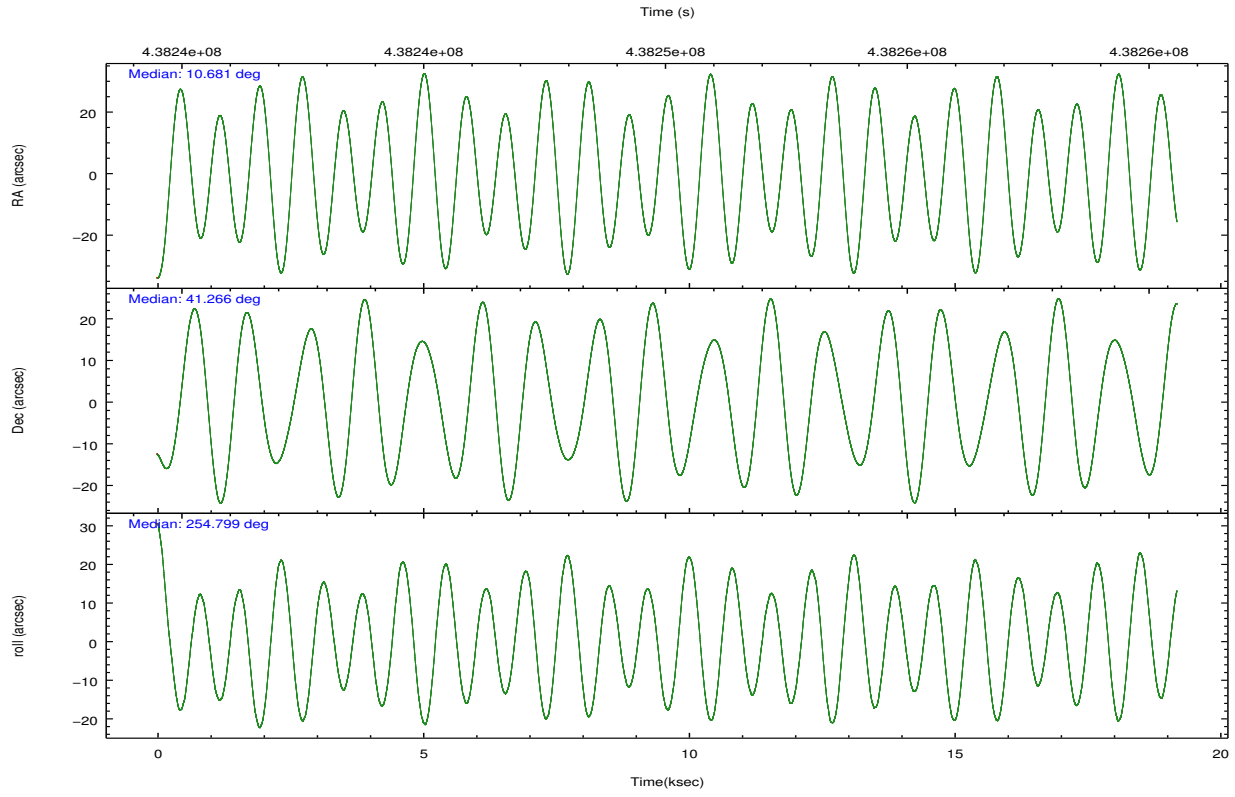
	<b>segment 0</b>
level 1 events	1854647
rejected events	13907
rejected %	0%

## 2.2 Compared Parameters

Parameter	Planned	Actual	Parameter	Planned	Actual
Instrument	HRC	HRC	Obspar format version number	7	7
Detector	HRC-I	HRC-I	Obspar file type	PREDICTED	ACTUAL
Grating	NONE	NONE	Obspar update status	NONE	UPDATED
Data mode	OBSERVING	OBSERVING			
Observation mode	POINTING	POINTING			
[deg] Pointing RA	10.671147	10.68121835034568			
[deg] Pointing Dec	41.292023	41.2658672381134			
[deg] Pointing Roll	254.903334	254.8011977781624			
[mm] SIM focus pos	-1.040293	-1.038866356238299			
[mm] SIM defocus	0	0.001426264420575141			
[mm] SIM translation stage pos	126.985494	126.9854943052878			
[mm] SIM translation stage offset	0	-5.413686238853188e-06			
[s] Observation start time (MET)	438240623.184000	438239951.72245			
Observation start date	2011-11-21T05:29:17	2011-11-21T05:19:11			
[s] Observation end time (MET)	438259623.184000	438260716.17354			
Observation end date	2011-11-21T10:45:57	2011-11-21T11:05:16			

## 2.3 Aspect



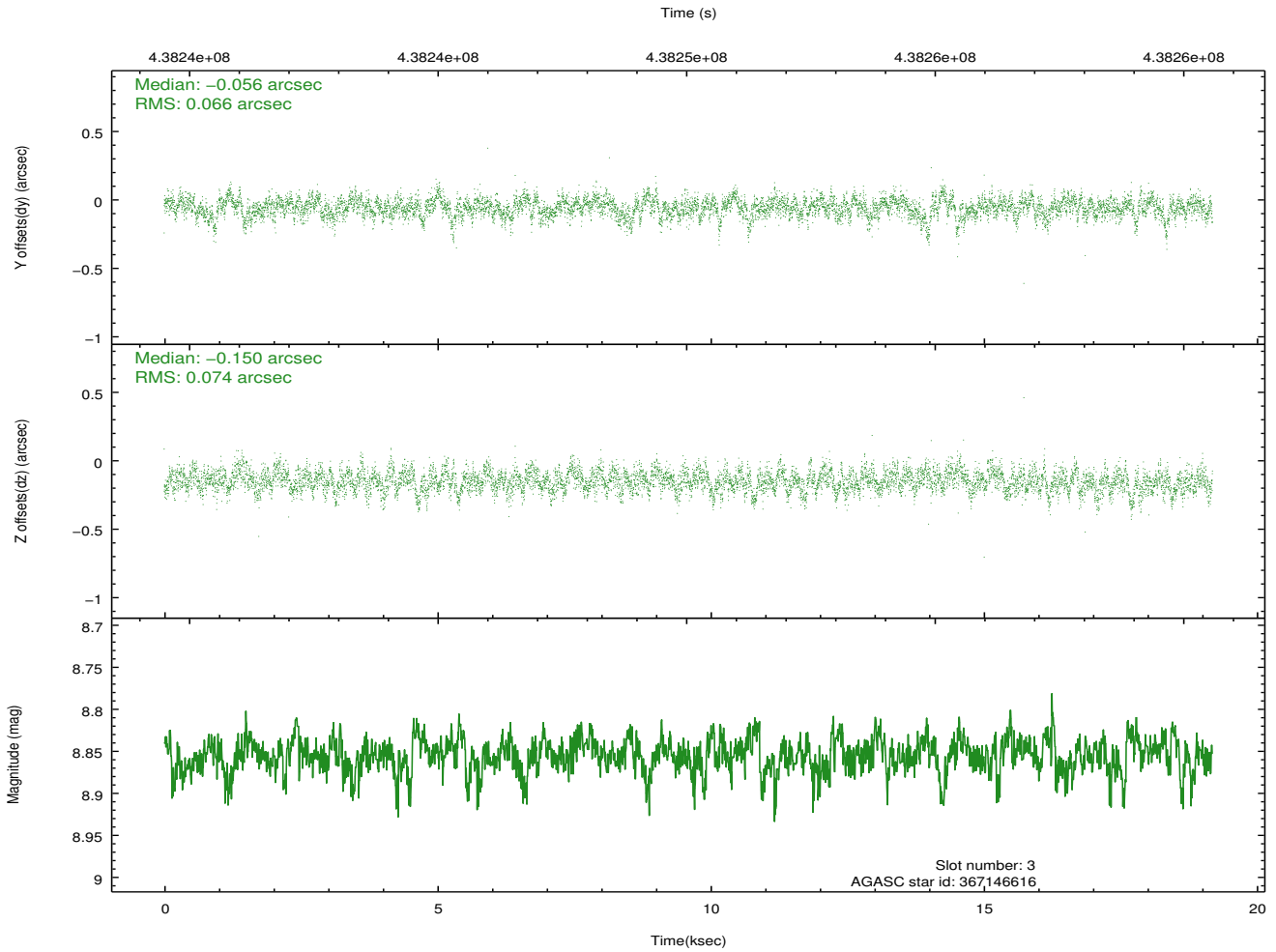
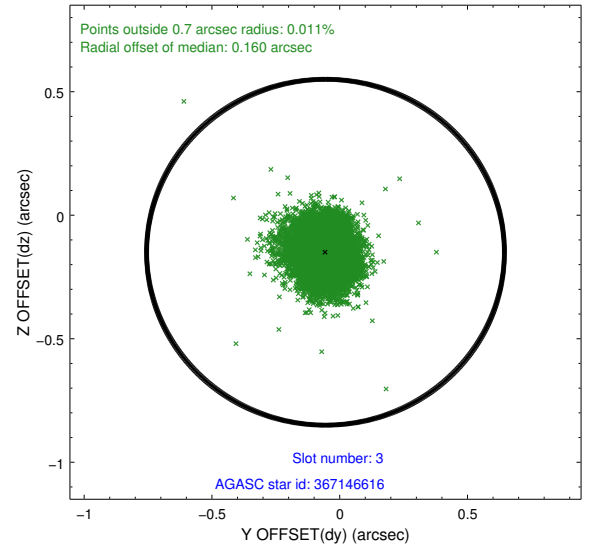
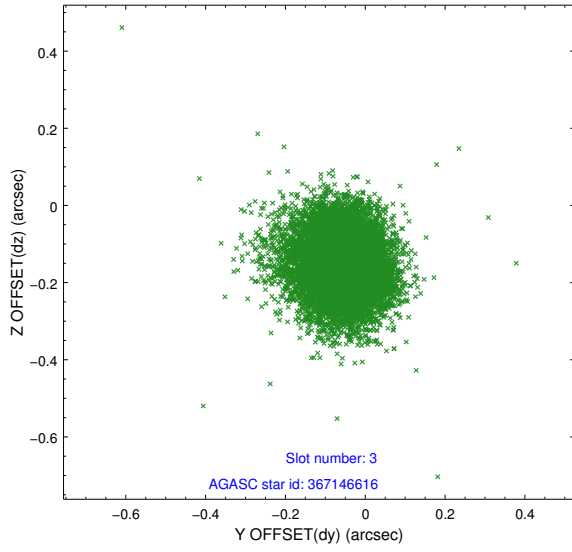


### Slot Statistics

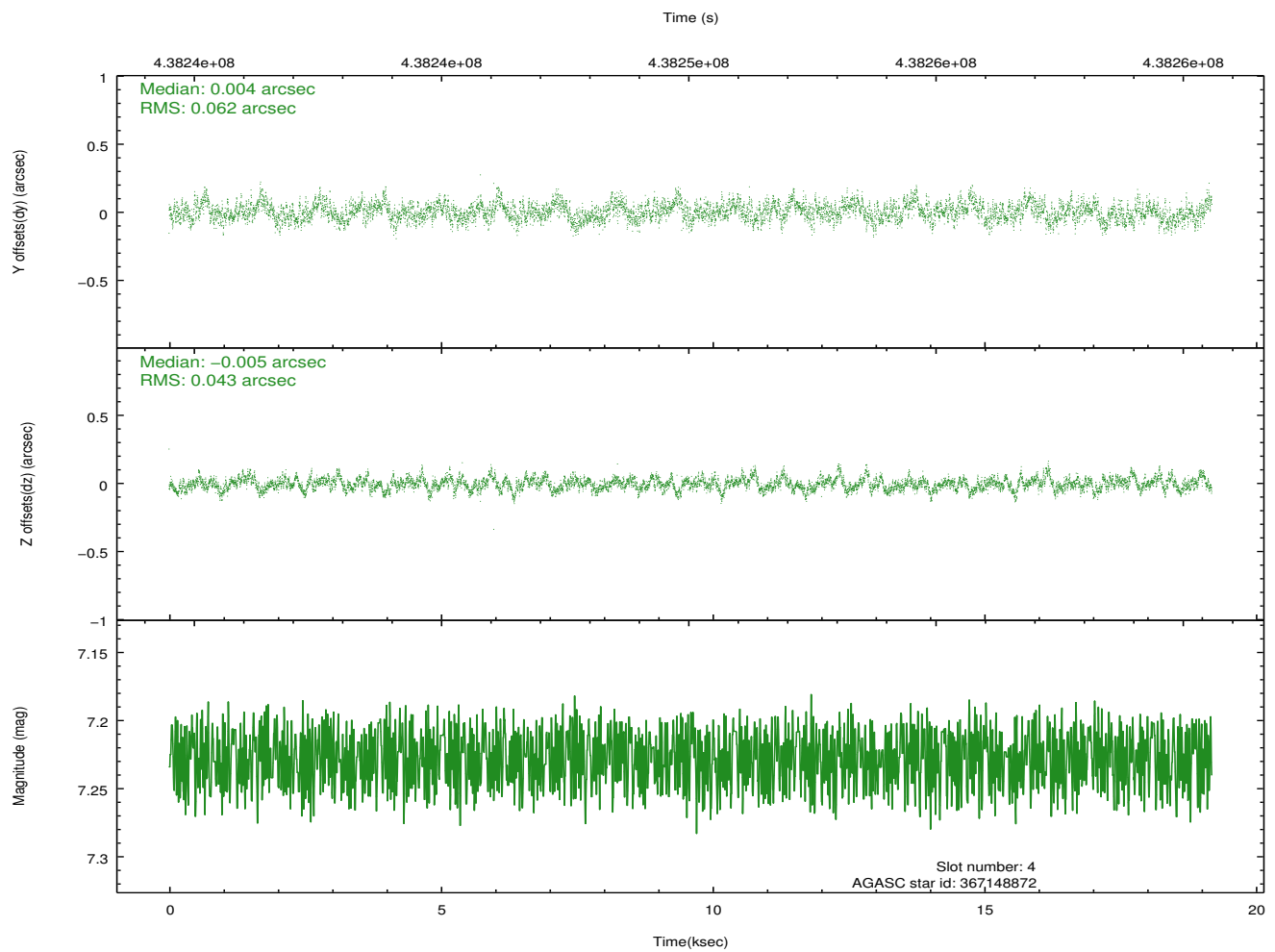
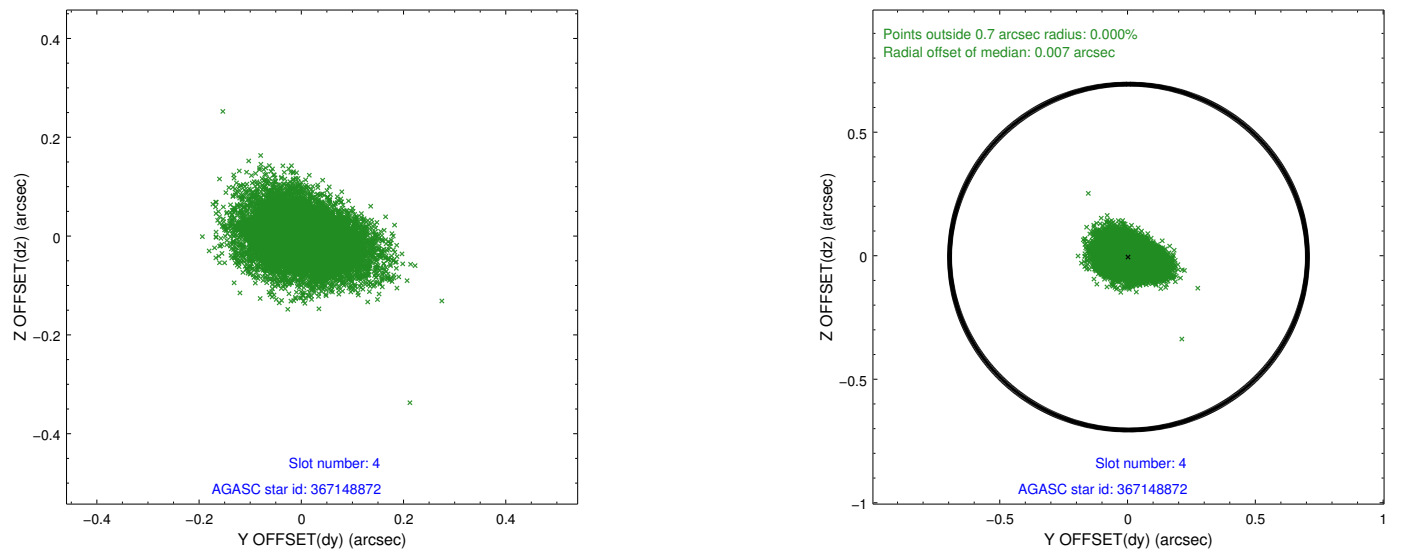
slot	status	id	mag	n_pts	med_dy	med_dz	dr1	dr2	ra	dec	mean_y	mean_z
0	FID	HRC-I-1	6.96	4681	-0.090	0.020	0.009	0.016	0.000000	0.000000	-769.91	-1300.33
1	FID	HRC-I-2	6.99	4681	0.282	-0.169	0.010	0.025	0.000000	0.000000	842.93	-1302.37
2	FID	HRC-I-3	7.04	4680	-0.073	0.058	0.008	0.020	0.000000	0.000000	-1198.19	1003.99
3	GUIDE	367146616	8.85	9358	-0.056	-0.150	0.103	0.170	11.418645	41.190163	-181.81	2048.30
4	GUIDE	367148872	7.23	9360	0.004	-0.005	0.079	0.133	10.505940	40.688258	2216.45	131.01
5	GUIDE	367657896	9.02	9356	-0.003	0.093	0.112	0.179	11.197765	41.313576	-449.65	1353.66
6	GUIDE	367663272	9.28	9227	0.048	0.136	0.138	0.242	10.656279	41.699429	-1404.80	-421.12
7	GUIDE	367674552	8.84	9346	0.020	-0.071	0.096	0.164	11.016238	41.570845	-1212.94	635.55

## 2.4 Star Slots

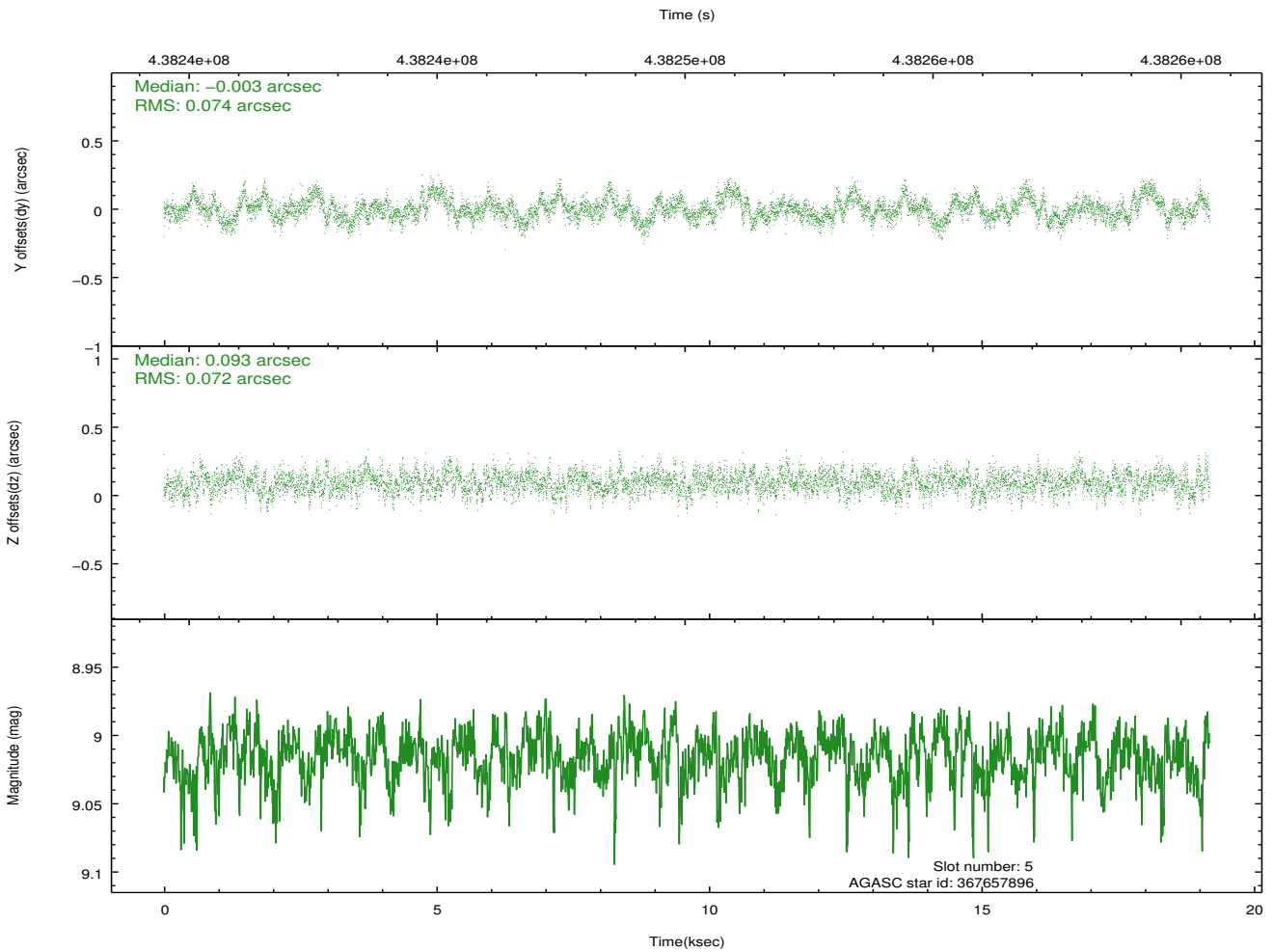
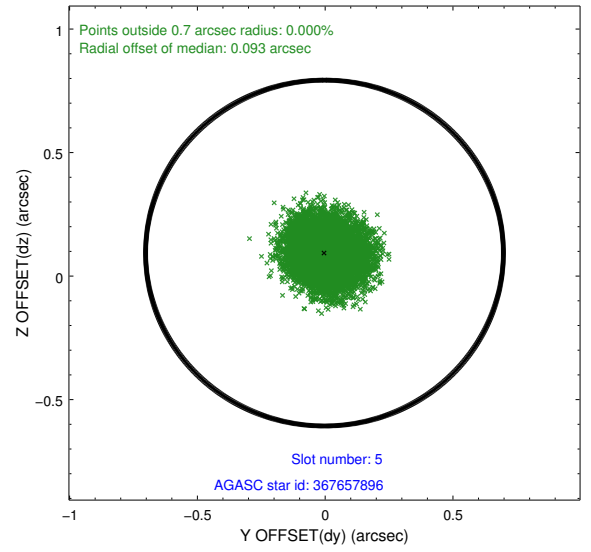
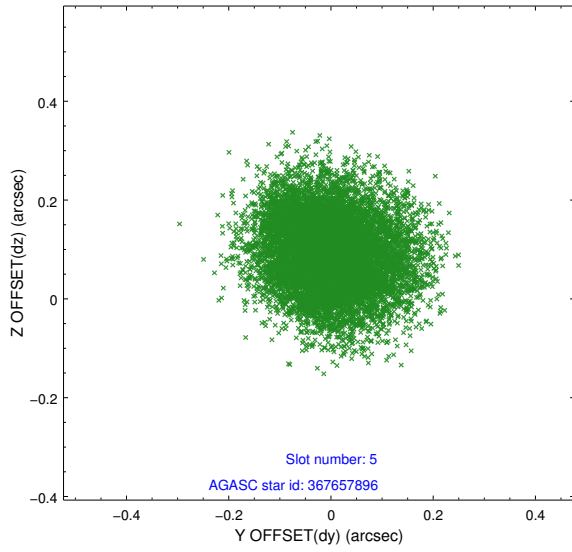
### 2.4.1 Slot 3



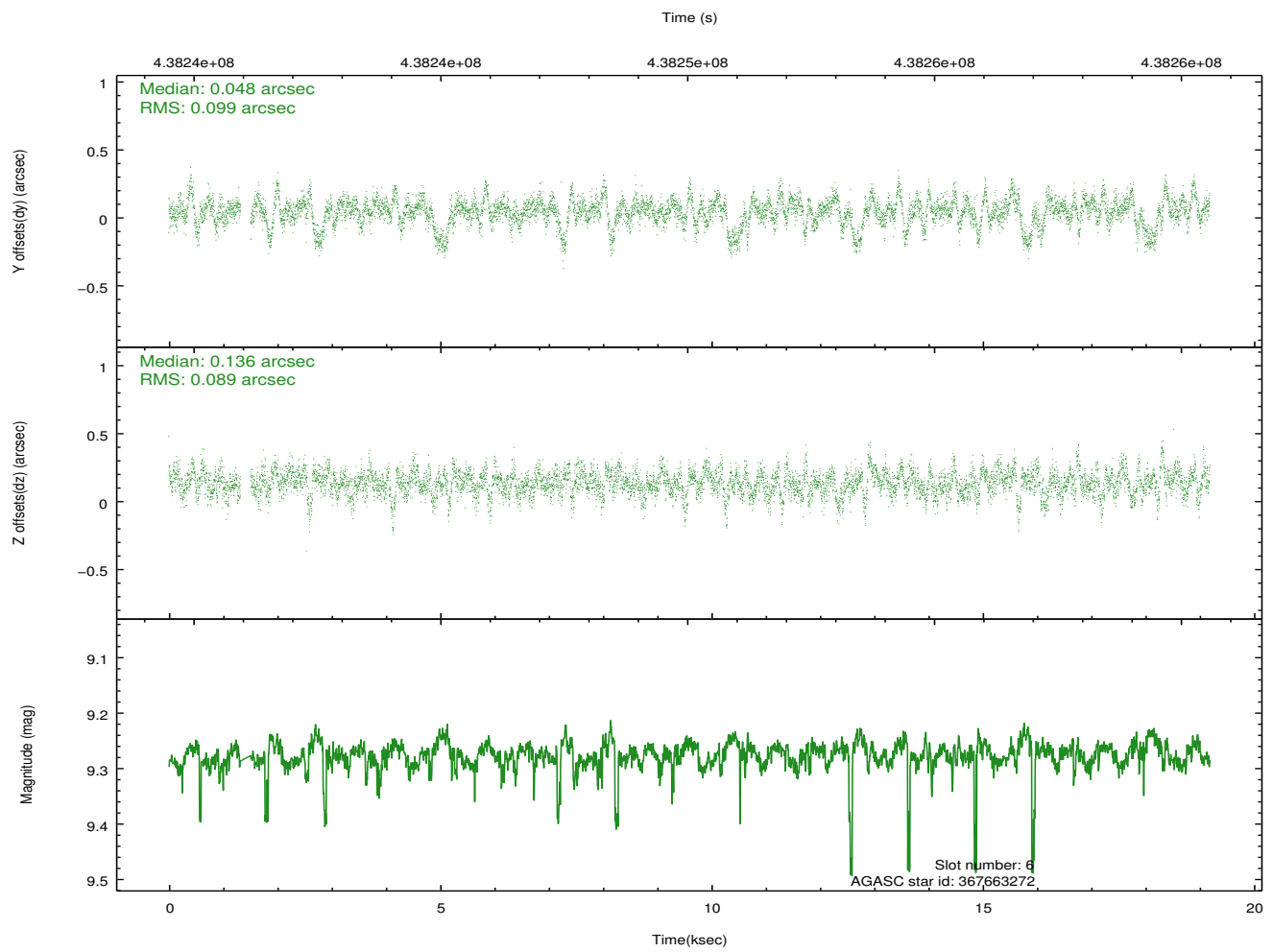
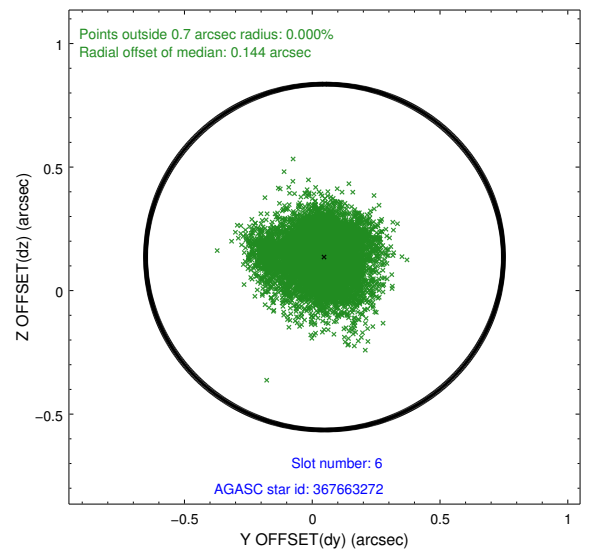
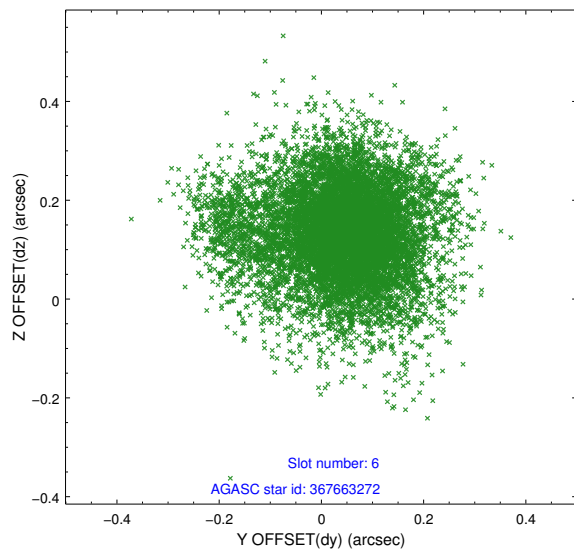
## 2.4.2 Slot 4



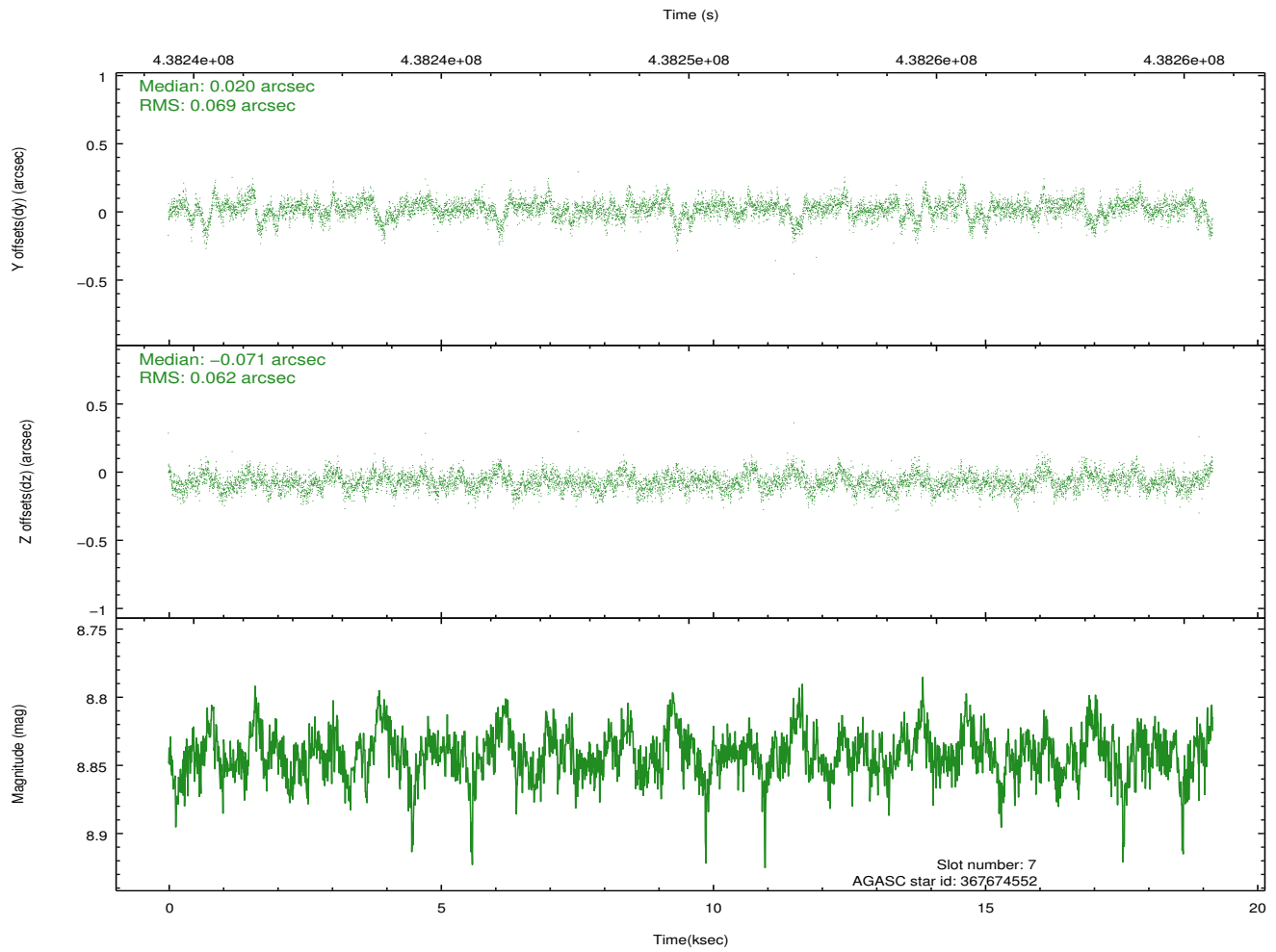
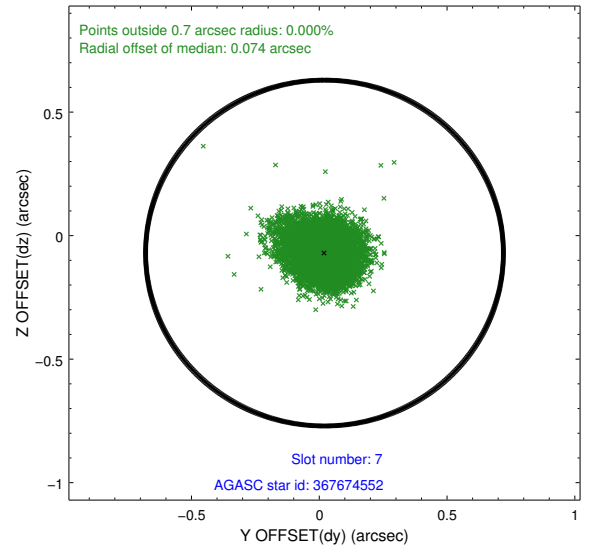
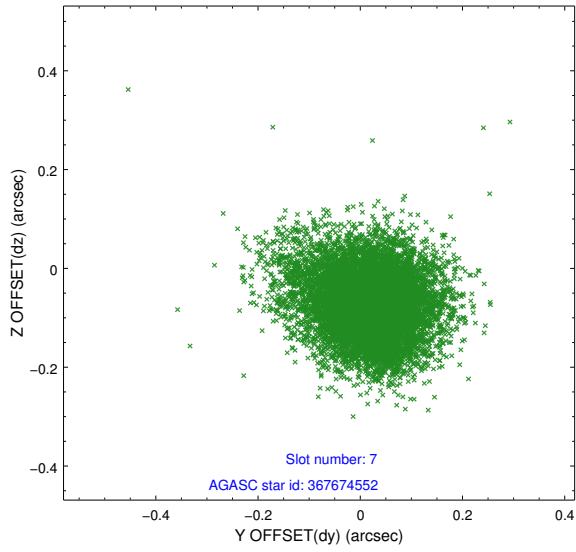
### 2.4.3 Slot 5



## 2.4.4 Slot 6

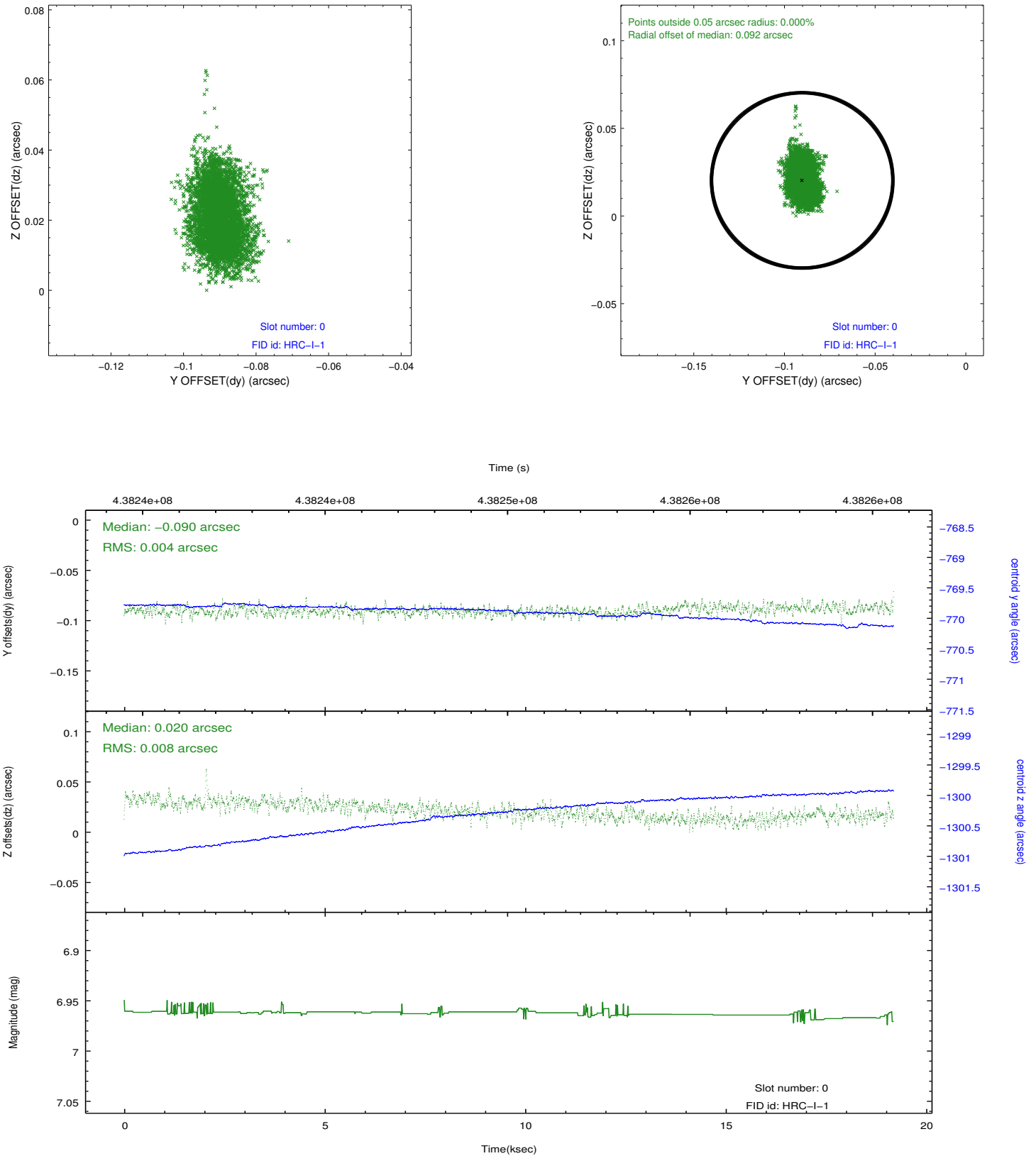


### 2.4.5 Slot 7

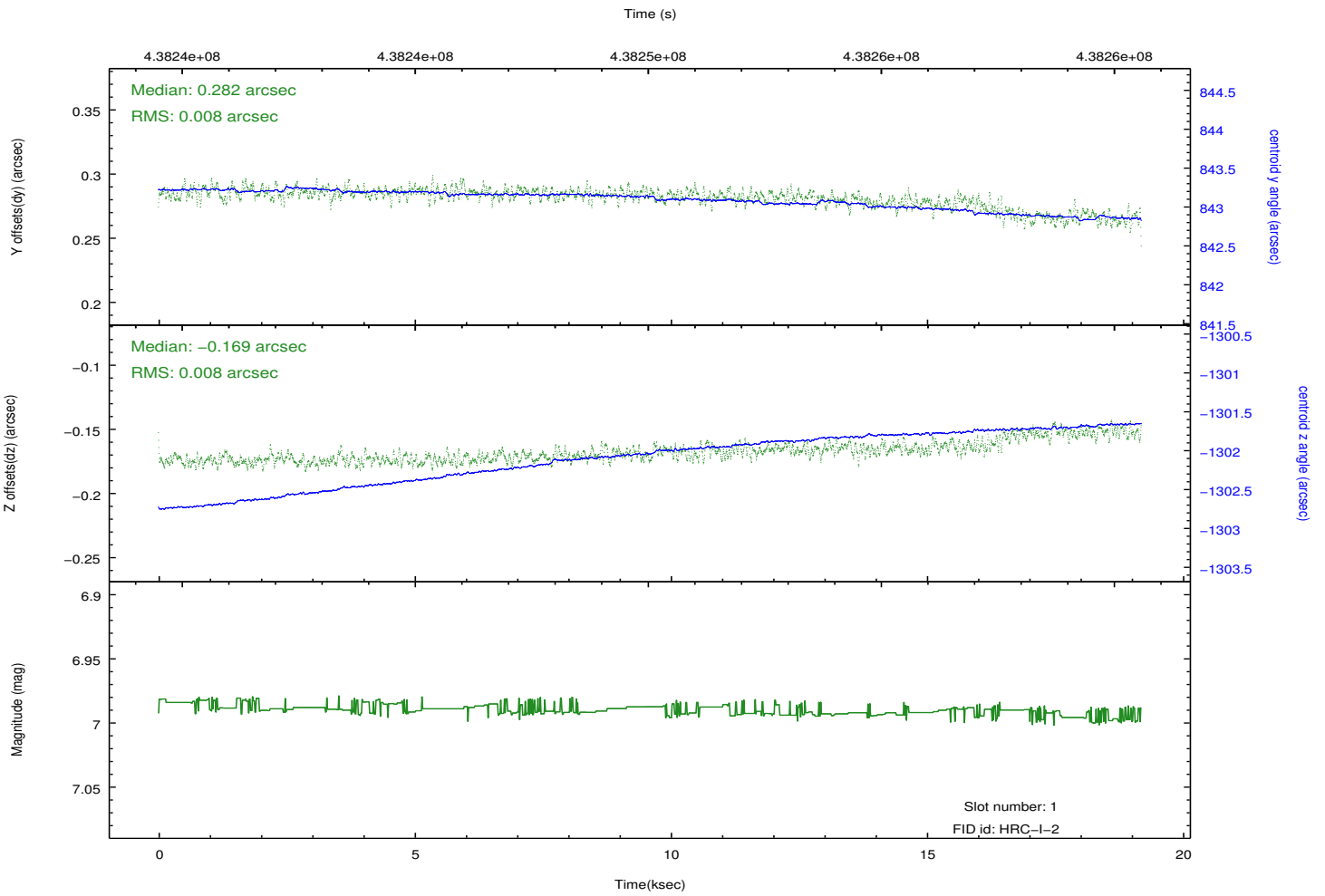
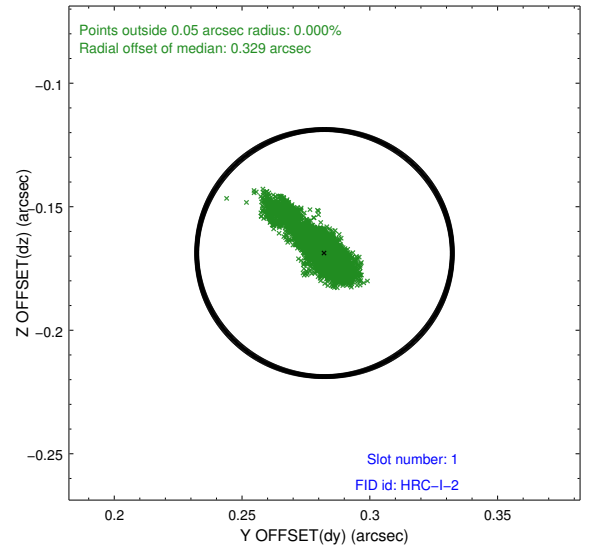
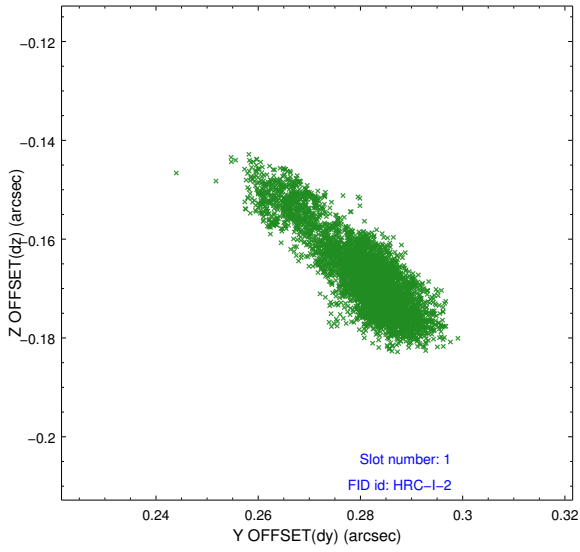


## 2.5 FID Slots

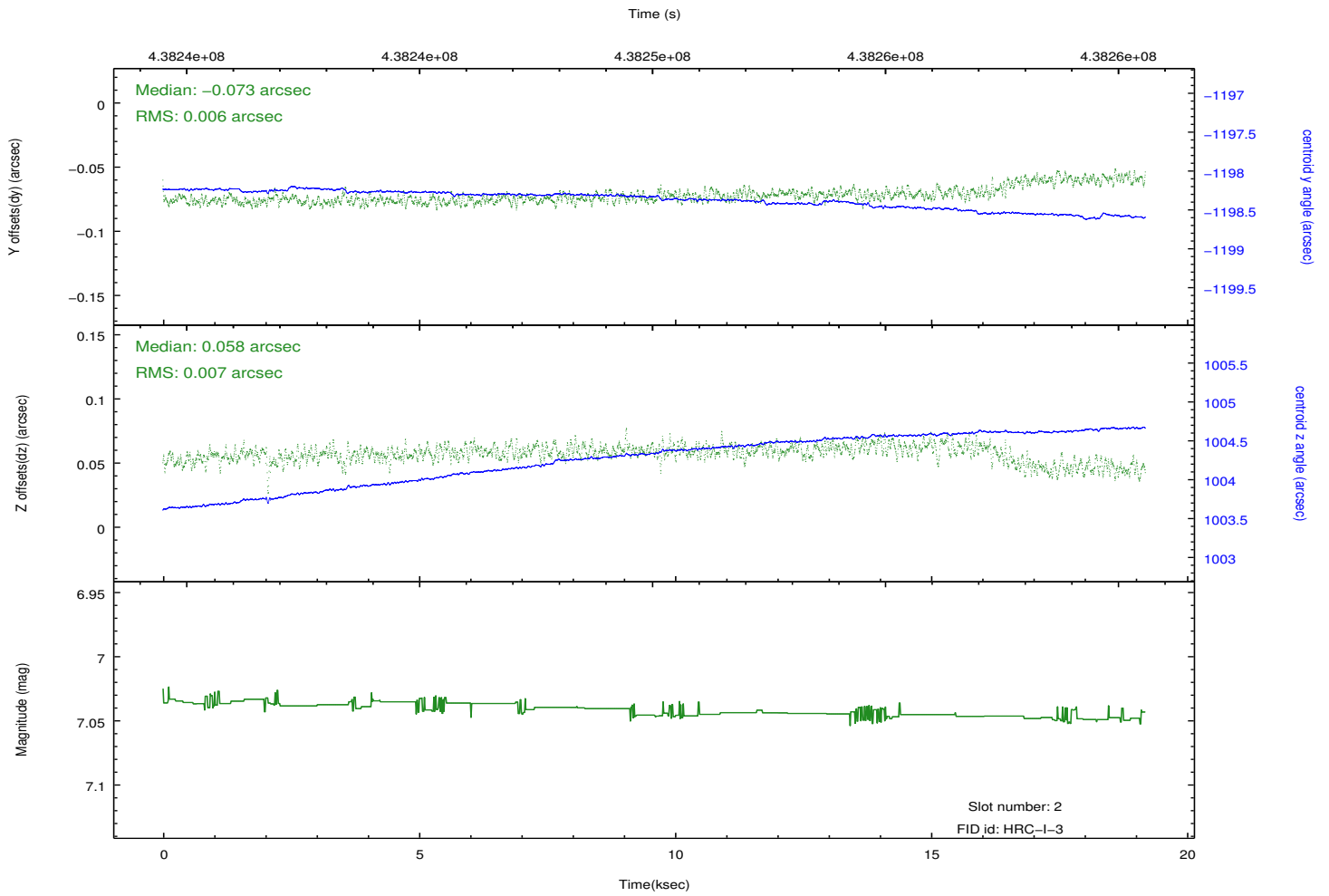
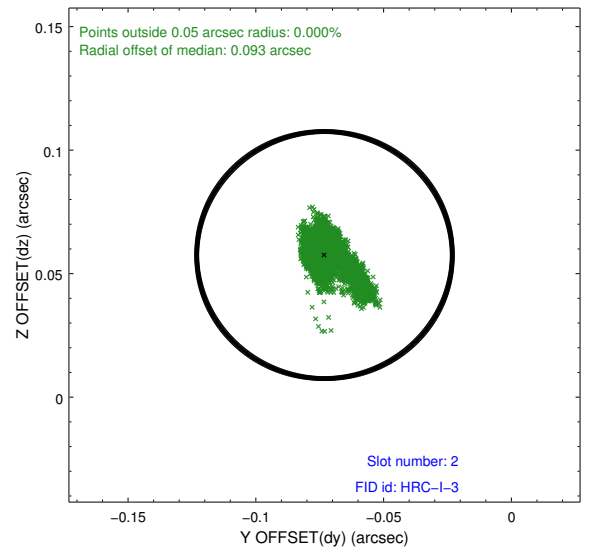
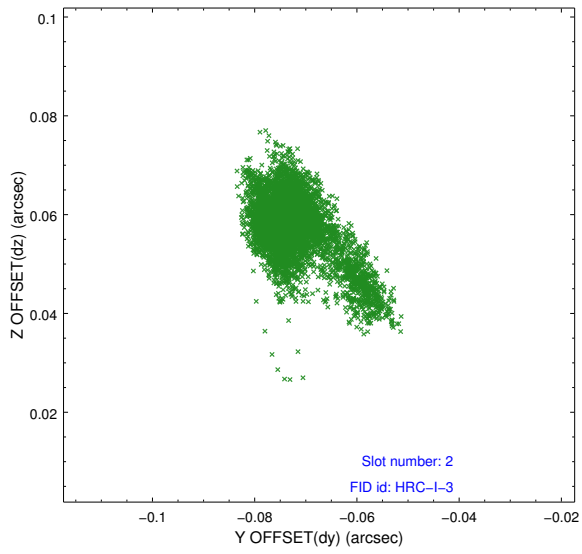
### 2.5.1 Slot 0



## 2.5.2 Slot 1



### 2.5.3 Slot 2



# A Summary

## A.1 Status

V&V Scientist	Beth Sundheim
V&V Date (YYYY-MM-DD)	2012.08.06
V&V Edition	1
V&V Disposition and Status	OK
V&V Charge Time	19.189282262027

## A.2 Comments

Joint proposal with XMM.