

V&V Reference Report

L2 ASCDS Version : 8.5.1.1

Observation 14898 - L2 Version 3
Chandra X-Ray Center

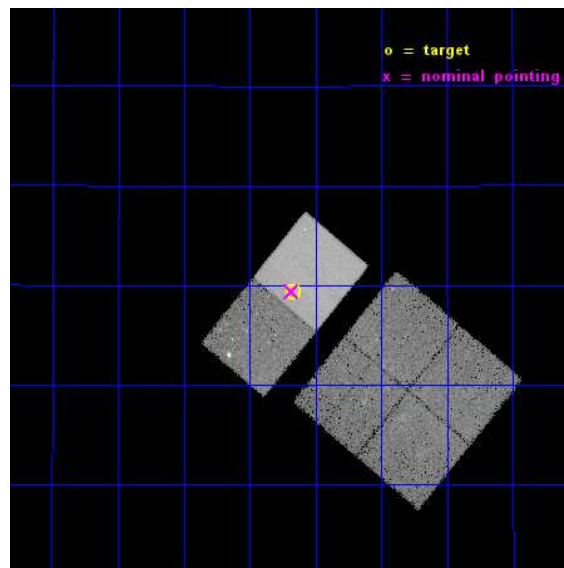
L2 Processing Date : Dec 1 2014

Contents

1	Front	2
2	OBI	3
2.1	OBI	3
2.1.1	Images	3
2.1.2	Bias	3
2.1.3	Parameters	4
2.1.4	Events	4
2.2	Compared Parameters	5
2.3	Aspect	6
2.4	Star Slots	9
2.4.1	Slot 3	9
2.4.2	Slot 4	10
2.4.3	Slot 5	11
2.4.4	Slot 6	12
2.4.5	Slot 7	13
2.5	FID Slots	14
2.5.1	Slot 0	14
2.5.2	Slot 1	15
2.5.3	Slot 2	16
A	Summary	17
A.1	Status	17
A.2	Comments	17

1 Front

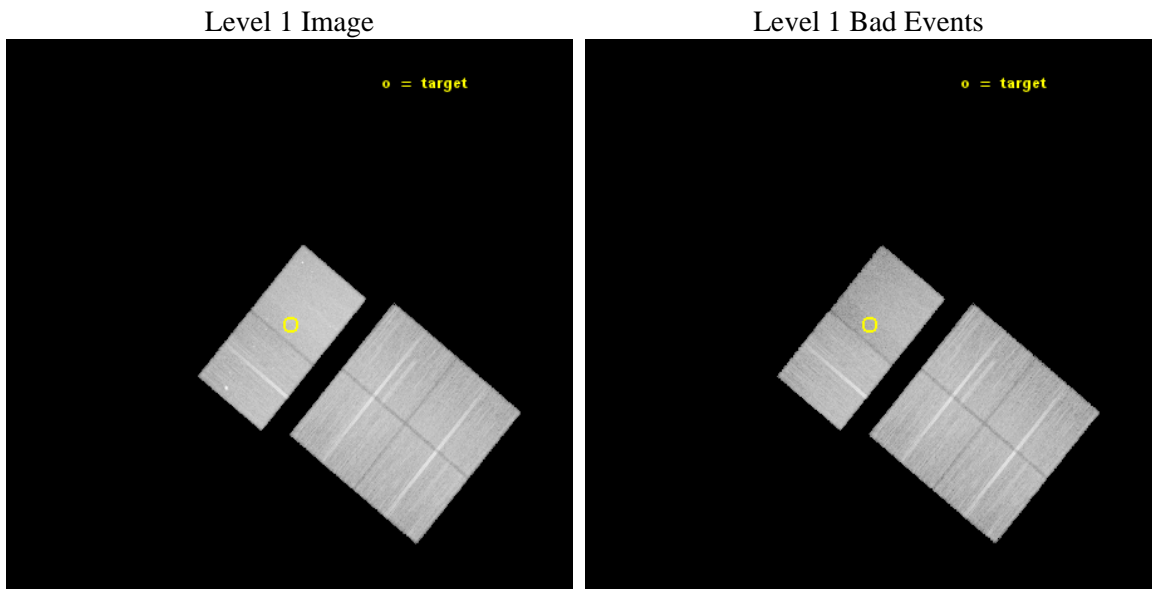
seq_num	601028	Sequence number
obs_id	14898	Observation id
title	Mapping X-rays in the Shock-heated Taffy Bridge: Can X-rays Explain the Warm H2?	Proposal title
observer	Dr. Phil Appleton	Principal investigator
object	Taffy Galaxy	Source name
dtcycle	0	
cycle	P	events from which exps? Prim/Second/Both
ra_targ	0.4175	Observer's specified target RA [deg]
dec_targ	23.489722	Observer's specified target Dec [deg]
ra_nom	0.42076384379948	Nominal RA [deg]
dec_nom	23.490102576866	Nominal Dec [deg]
roll_nom	309.59777290584	Nominal Roll [deg]
revision	3	Processing version of data
ontime	39971.199851155	Sum of GTIs [s]
livetime	39465.060450873	Livetime [s]
ontime0	39971.199851155	Sum of GTIs [s]
ontime1	39961.346005917	Sum of GTIs [s]
ontime2	39964.628016412	Sum of GTIs [s]
ontime3	39964.669036388	Sum of GTIs [s]
ontime6	39967.951166332	Sum of GTIs [s]
ontime7	39971.199851155	Sum of GTIs [s]
l2events	207948	Number of level 2 events



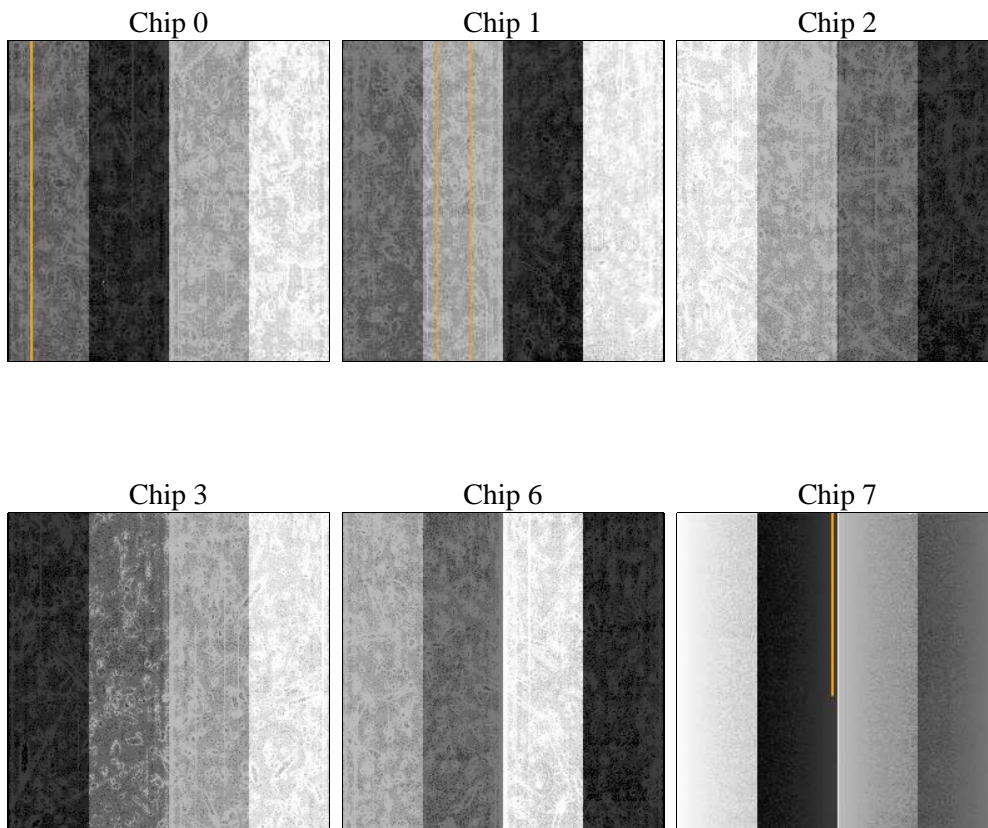
2 OBI

2.1 OBI

2.1.1 Images



2.1.2 Bias



2.1.3 Parameters

obi_num	0	Obi number	sched_exp_time	40000.000000	[s] Scheduled observation exposure time
ascdsver	10.3	Processing system revision	ontime	39971.199851155	Sum of GTIs [s]
caldsver	4.6.4	 	ontime0	39971.199851155	Sum of GTIs [s]
date	2014-12-01T09:19:32	Date and time of file creation	ontime1	39961.346005917	Sum of GTIs [s]
revision	3	Processing version of data	ontime2	39964.628016412	Sum of GTIs [s]
			ontime3	39964.669036388	Sum of GTIs [s]
			ontime6	39967.951166332	Sum of GTIs [s]
			ontime7	39971.199851155	Sum of GTIs [s]
			l1events	1206284	Number of level 1 events

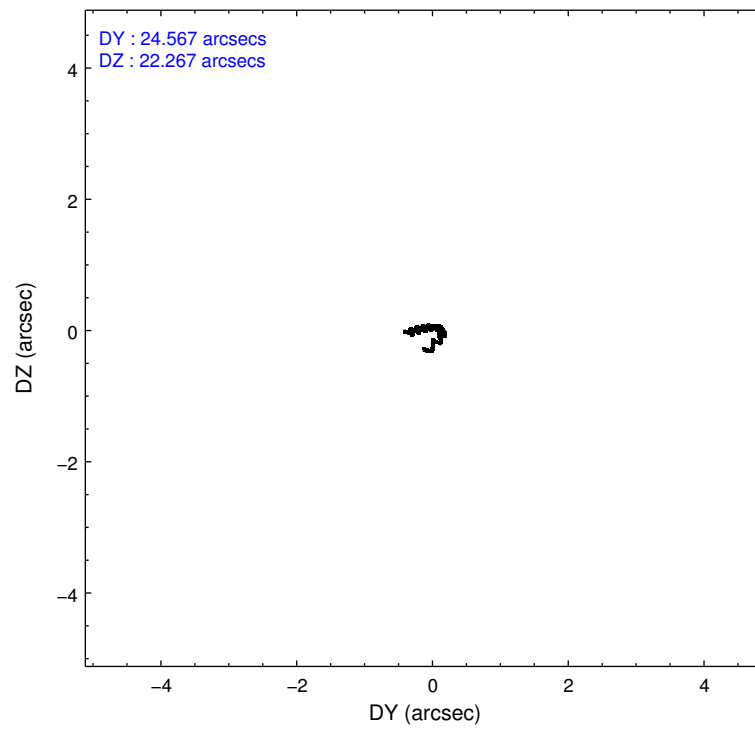
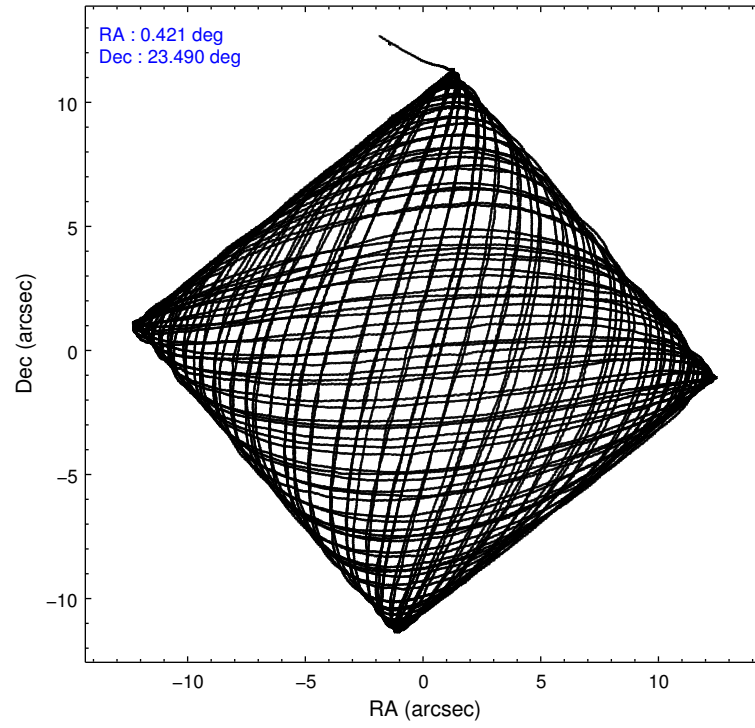
2.1.4 Events

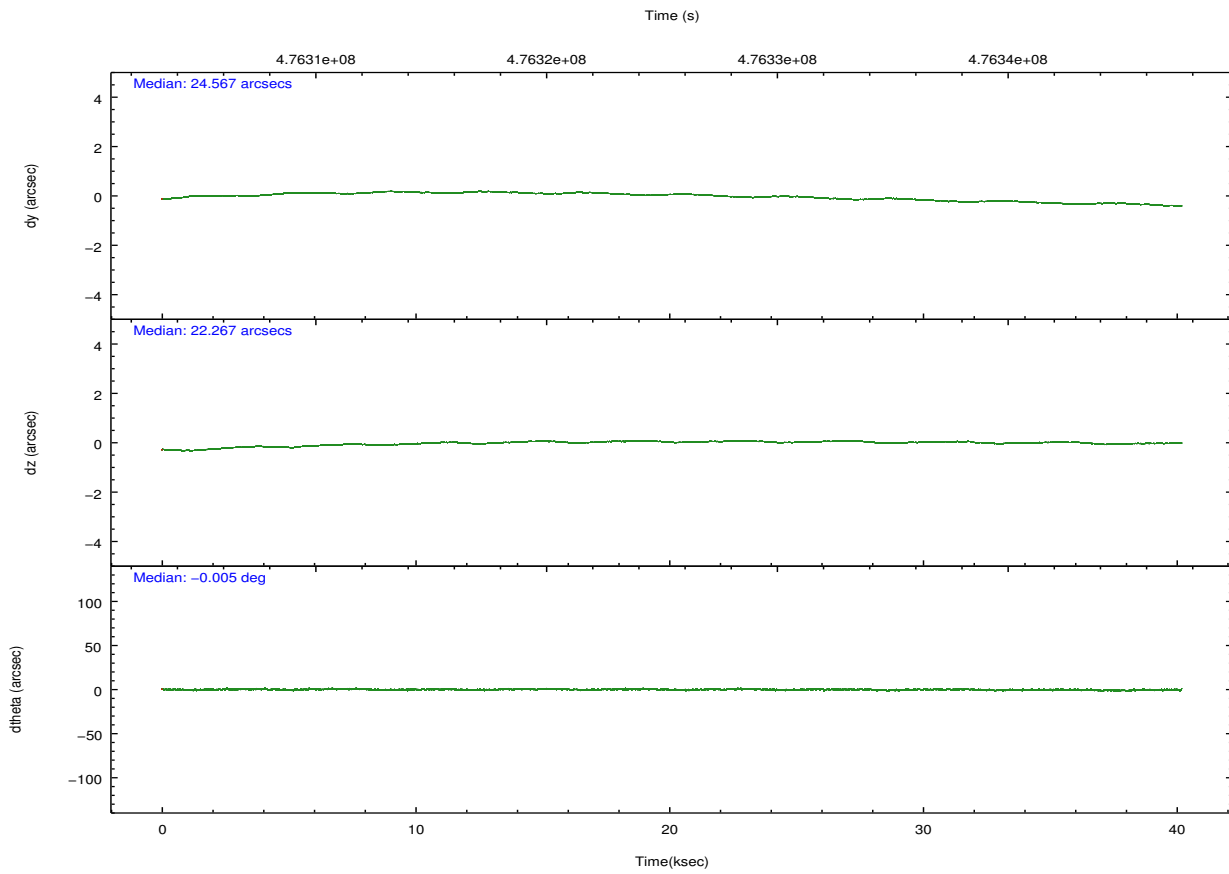
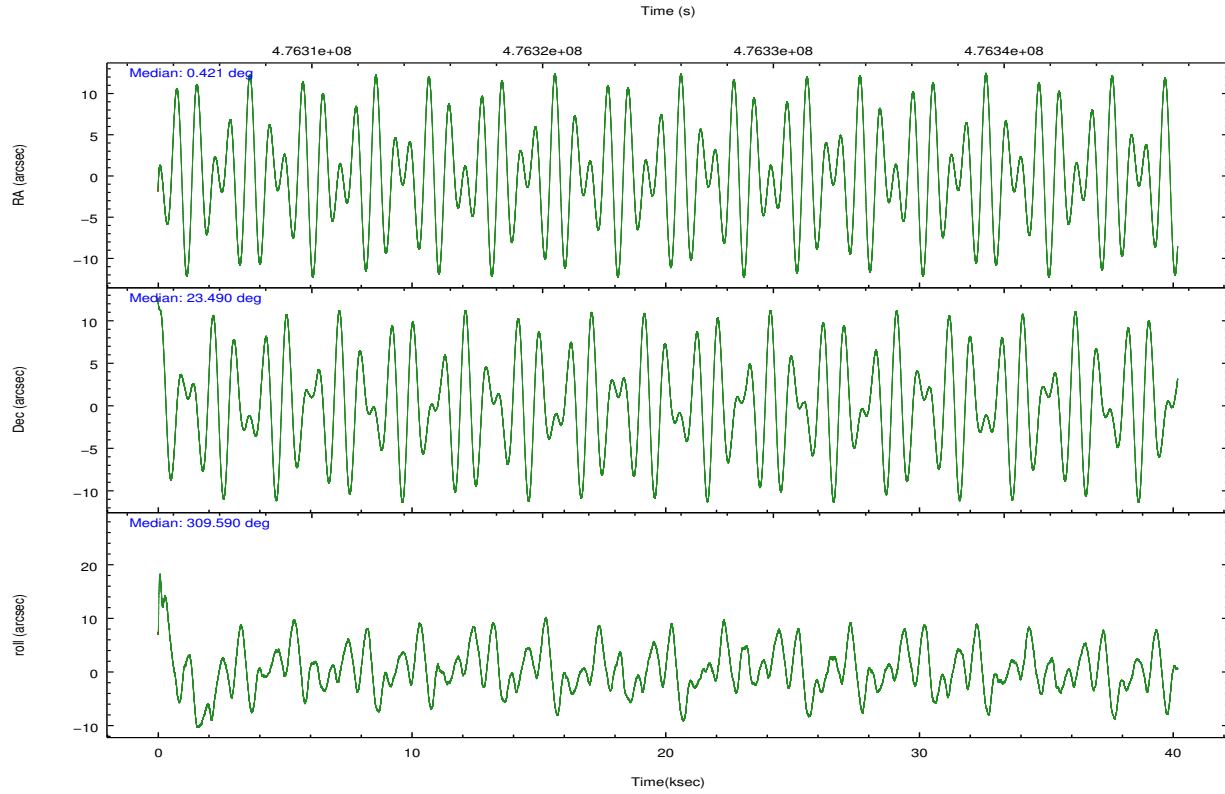
	ccd 0	ccd 1	ccd 2	ccd 3	ccd 6	ccd 7		ccd 0	ccd 1	ccd 2	ccd 3	ccd 6	ccd 7
level 1 events	190416	180634	202374	191129	206989	234742	grade 0 events	8525	8262	8439	7639	10637	11156
rejected events	166656	156904	179905	169728	180308	122022		4%	4%	4%	3%	5%	4%
rejected %	87%	86%	88%	88%	87%	51%	grade 1 events	120	115	120	131	118	358
								0%	0%	0%	0%	0%	0%
							grade 2 events	6096	5411	5435	4778	5819	24269
								3%	2%	2%	2%	2%	10%
							grade 3 events	2403	2523	2219	2278	2537	10197
								1%	1%	1%	1%	1%	4%
							grade 4 events	2184	2541	2323	2375	2441	9889
								1%	1%	1%	1%	1%	4%
							grade 5 events	8054	8339	7052	8973	8701	25310
								4%	4%	3%	4%	4%	10%
							grade 6 events	4552	4993	4054	4335	5251	57220
								2%	2%	2%	2%	2%	24%
							grade 7 events	158482	148450	172732	160620	171485	96343
								83%	82%	85%	84%	82%	41%

2.2 Compared Parameters

Parameter	Planned	Actual	Parameter	Planned	Actual
Instrument	ACIS	ACIS	Obspar format version number	7	7
Detector	ACIS-012367	ACIS-012367	Obspar file type	PREDICTED	ACTUAL
Grating	NONE	NONE	Obspar update status	NONE	UPDATED
Data mode	VFAINT	VFAINT	CCD I0 on	O1	Y
Observation mode	POINTING	POINTING	CCD I1 on	O2	Y
[deg] Pointing RA	0.392693	0.420763843799481	CCD I2 on	Y	Y
[deg] Pointing Dec	23.499271	23.49010257686625	CCD I3 on	Y	Y
[deg] Pointing Roll	309.452344	309.5977729058421	CCD S0 on	N	N
[mm] SIM focus pos	-0.684267	-0.6828225247311905	CCD S1 on	N	N
[mm] SIM defocus	0	0.001444936568705701	CCD S2 on	Y	Y
[mm] SIM translation stage pos	-190.132523	-190.1425803651734	CCD S3 on	Y	Y
[mm] SIM translation stage offset	0	0.01005778216563158	CCD S4 on	N	N
[s] Observation start time (MET)	476305520.184000	476304163.61115	CCD S5 on	N	N
Observation start date	2013-02-03T19:04:13	2013-02-03T18:42:43	Number of optional ACIS chips dropped	0	0
[s] Observation end time (MET)	476345520.184000	476345881.1134	On-chip summing requested	N	N
Observation end date	2013-02-04T06:10:53	2013-02-04T06:18:01	Subarray requested	NONE	NONE
Read mode	TIMED	TIMED	Alternating exposures requested	N	N
			[s] Primary exposure time	0.000000	3.2

2.3 Aspect





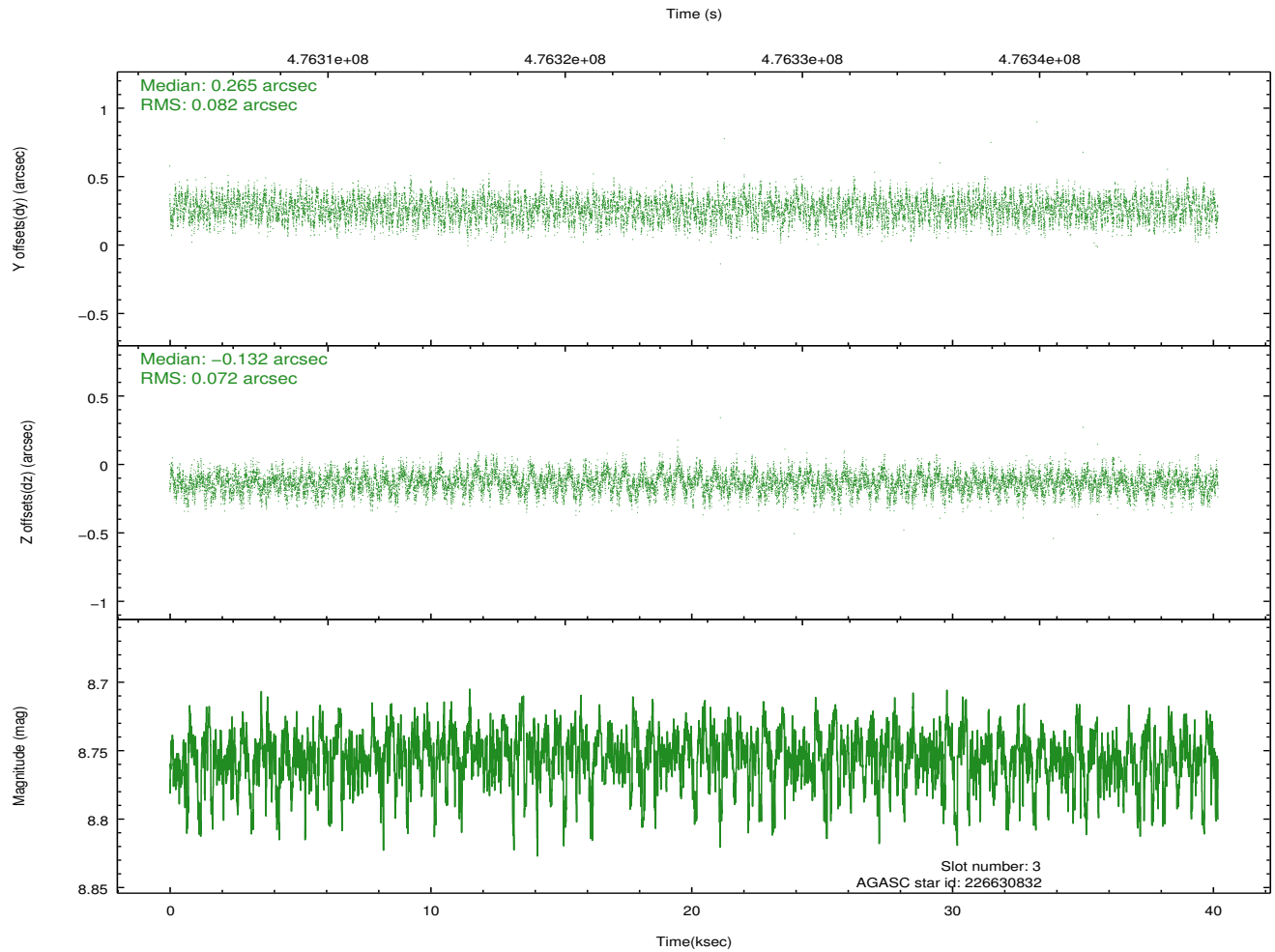
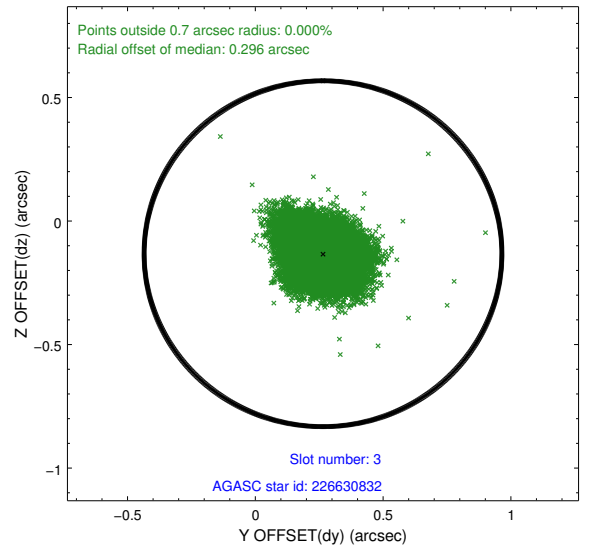
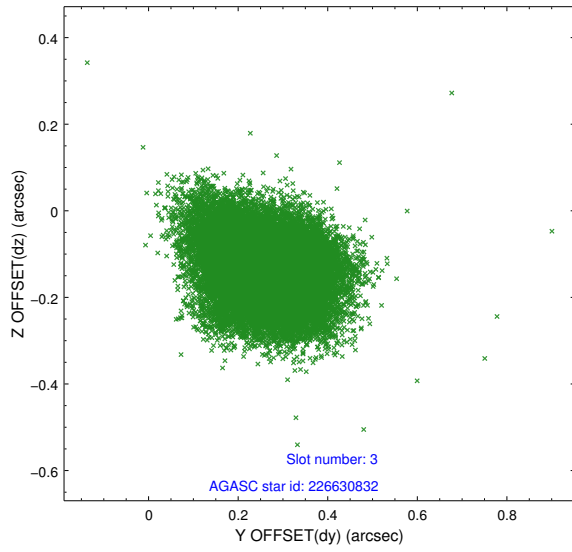
Slot Statistics

slot	status	used	id	mag	n_pts	med_dy	med_dz	dr1	dr2	ra	dec	mean_y	mean_z
0	FID		ACIS-S-1	7.00	9803	0.073	-0.045	0.009	0.016	0.000000	0.000000	918.34	-1739.45
1	FID		ACIS-S-5	7.05	9803	-0.196	0.029	0.009	0.015	0.000000	0.000000	-1830.90	158.20
2	FID		ACIS-S-6	7.14	9802	0.101	0.027	0.009	0.017	0.000000	0.000000	383.93	802.15
3	GUIDE	used	226630832	8.75	19555	0.265	-0.132	0.117	0.185	0.243352	22.726472	1834.31	-2151.55
4	GUIDE	used	226631288	8.79	19576	-0.083	0.063	0.114	0.174	0.469643	24.280833	-2012.10	1982.77
5	GUIDE	used	226632472	8.54	19598	-0.135	-0.060	0.086	0.134	0.842021	23.575039	729.60	1319.66
6	GUIDE	used	295183872	9.24	19485	0.027	0.246	0.182	0.339	359.784506	23.454603	-1154.36	-1650.32
7	GUIDE	used	226637672	7.83	19534	-0.049	-0.115	0.108	0.175	1.234673	23.269631	2404.79	1634.08

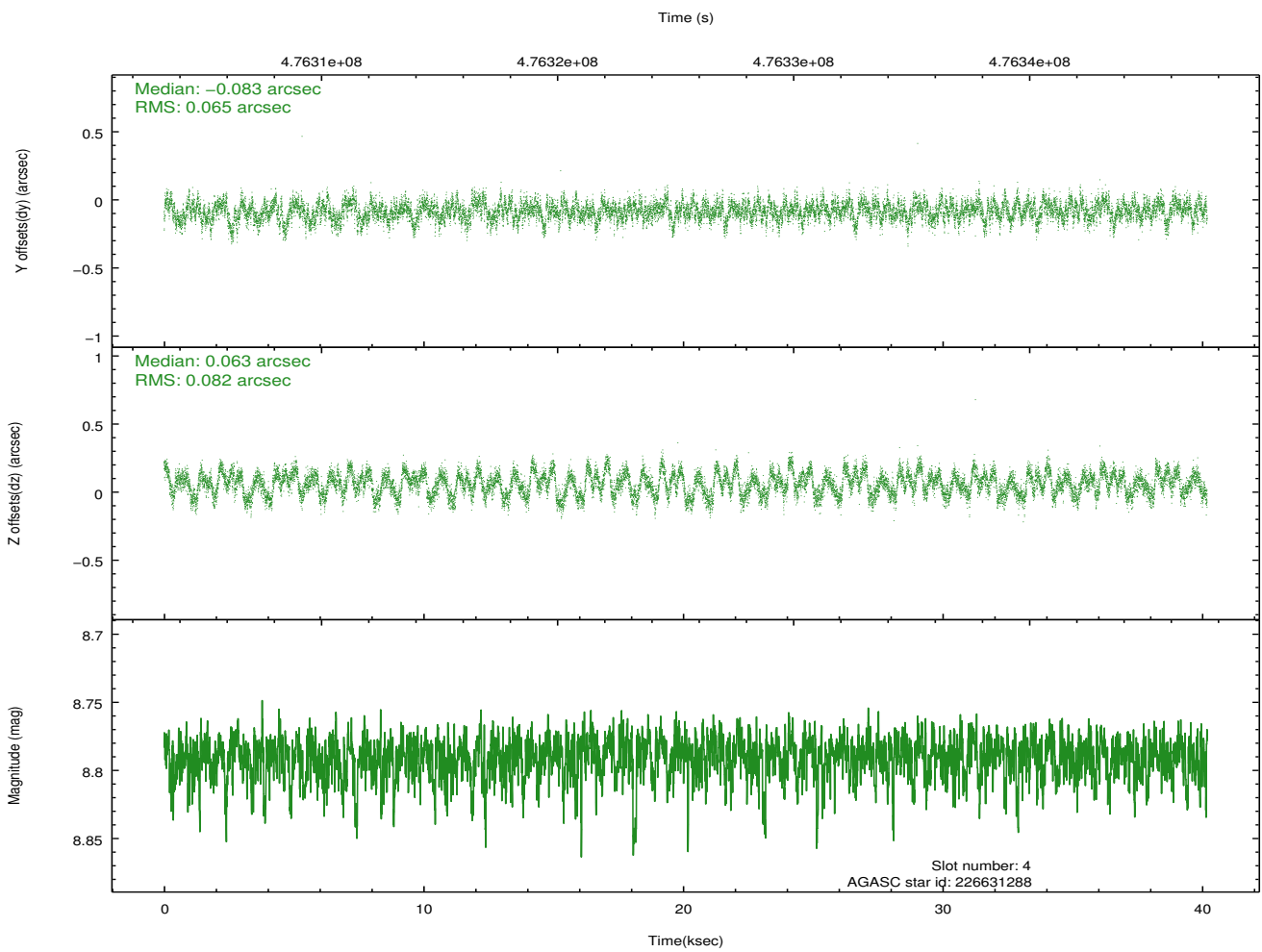
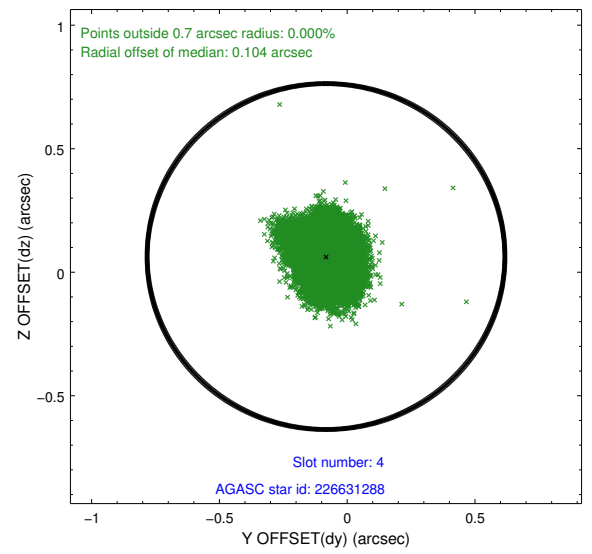
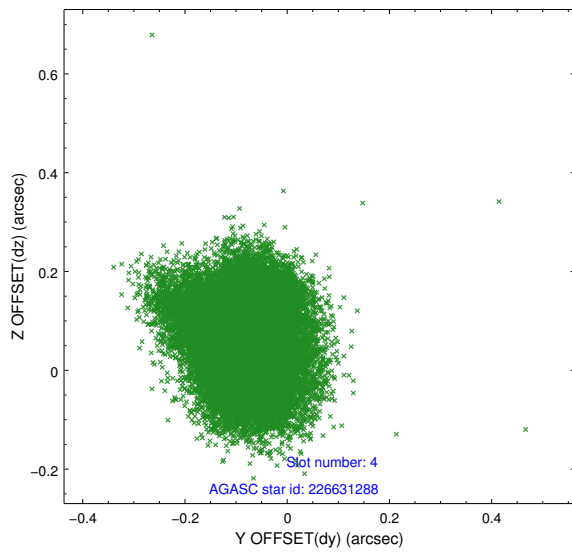
∞

2.4 Star Slots

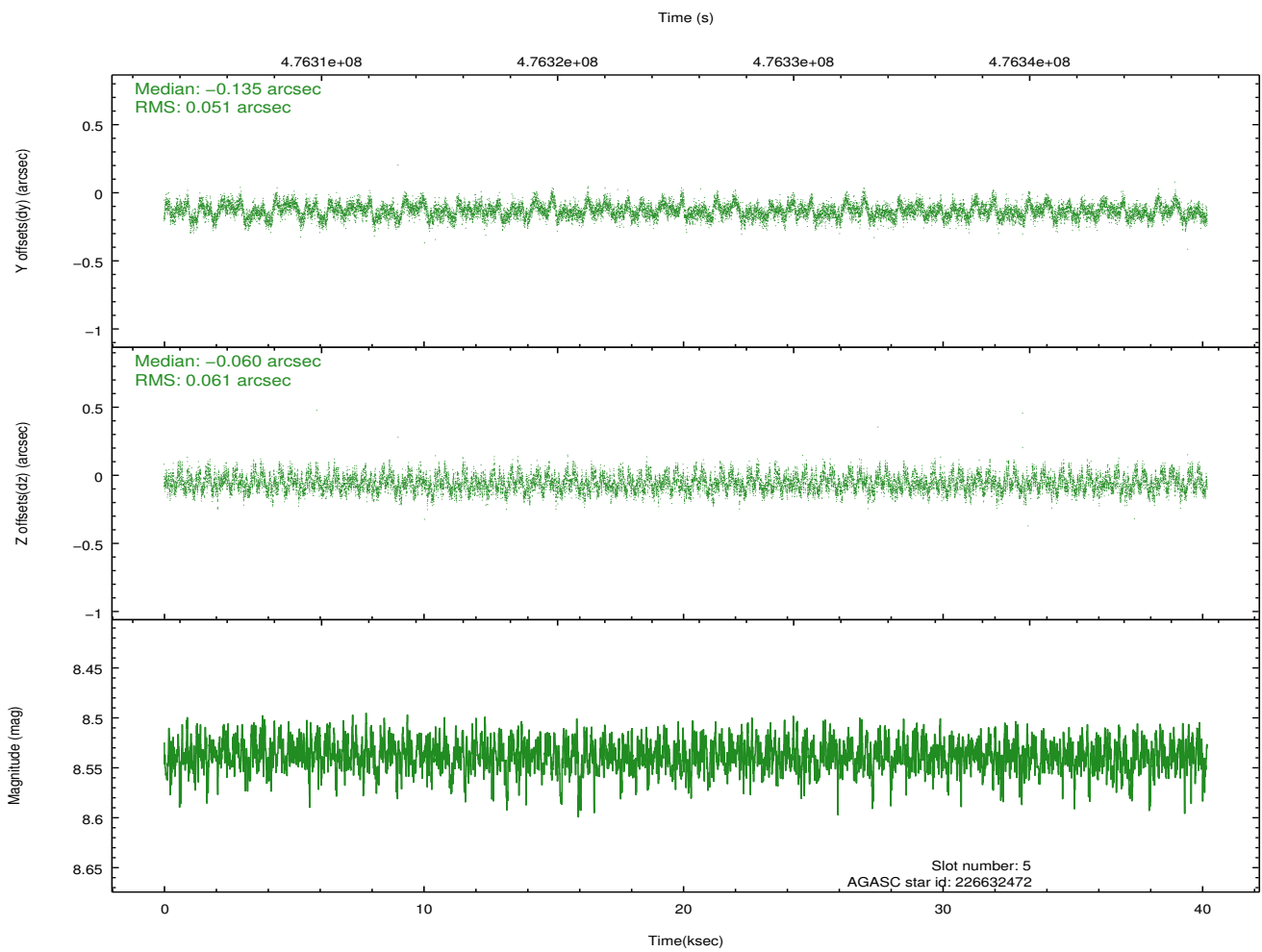
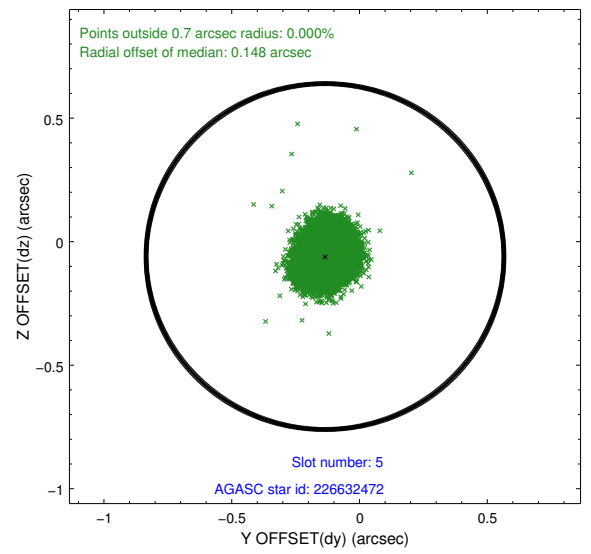
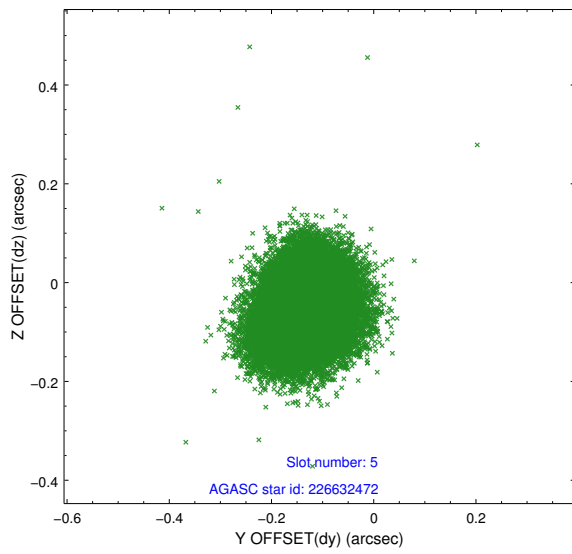
2.4.1 Slot 3



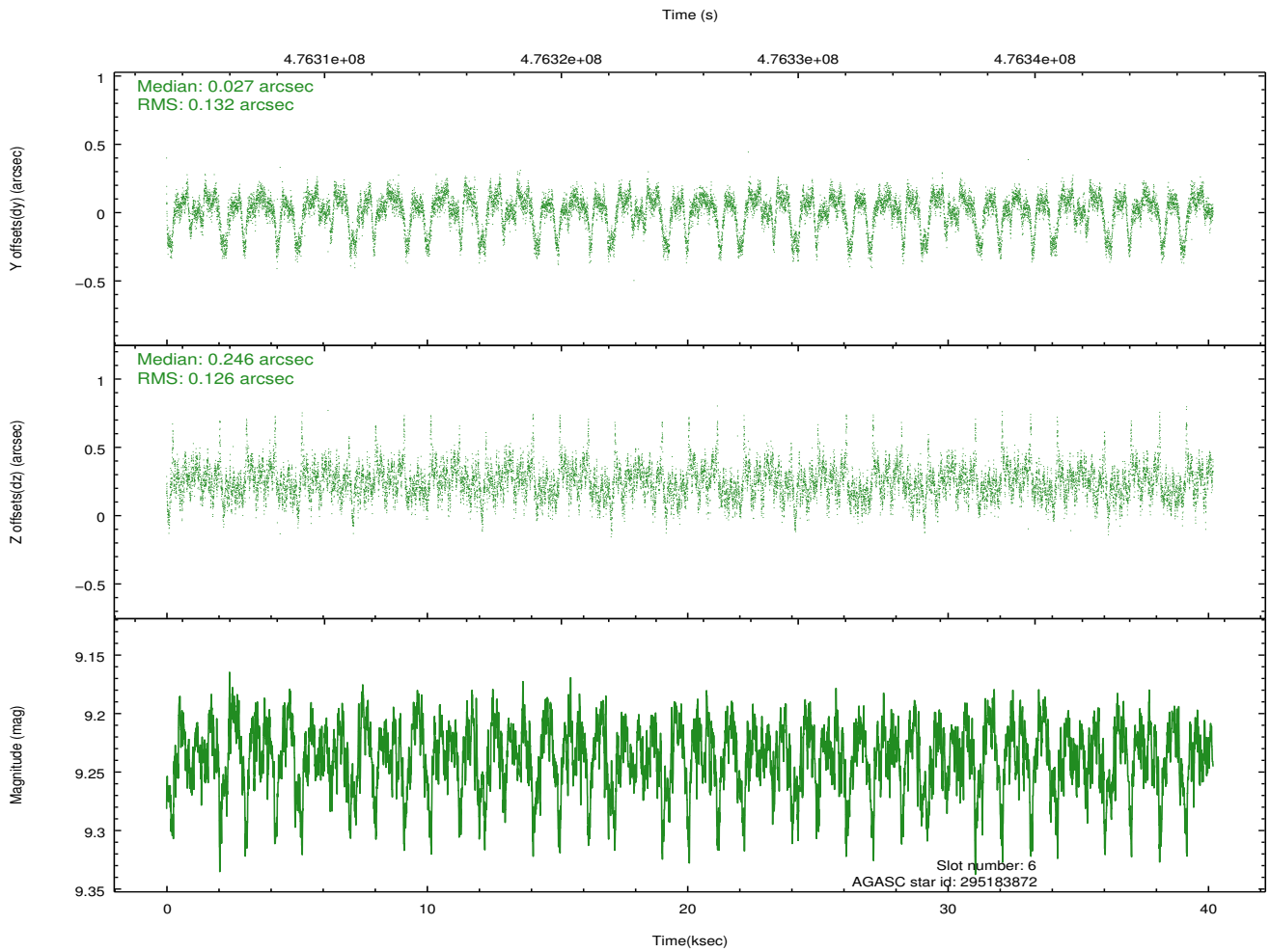
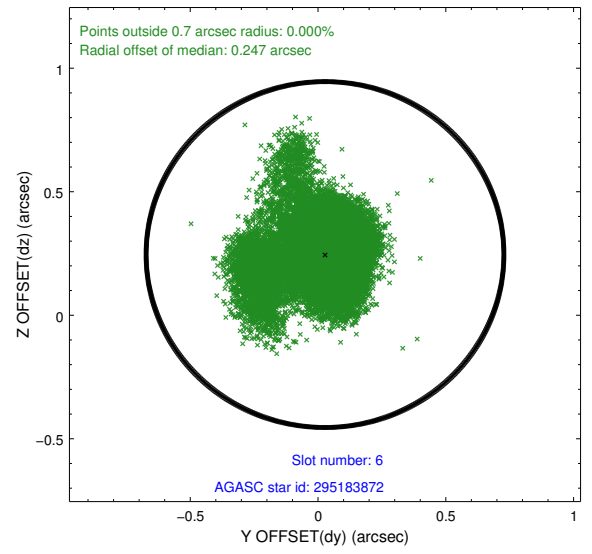
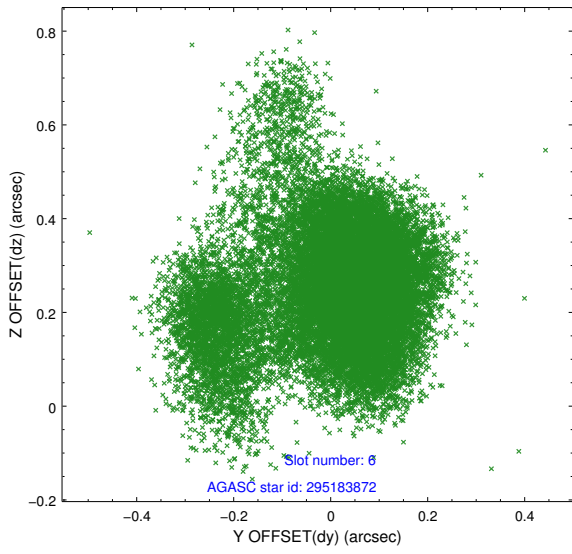
2.4.2 Slot 4



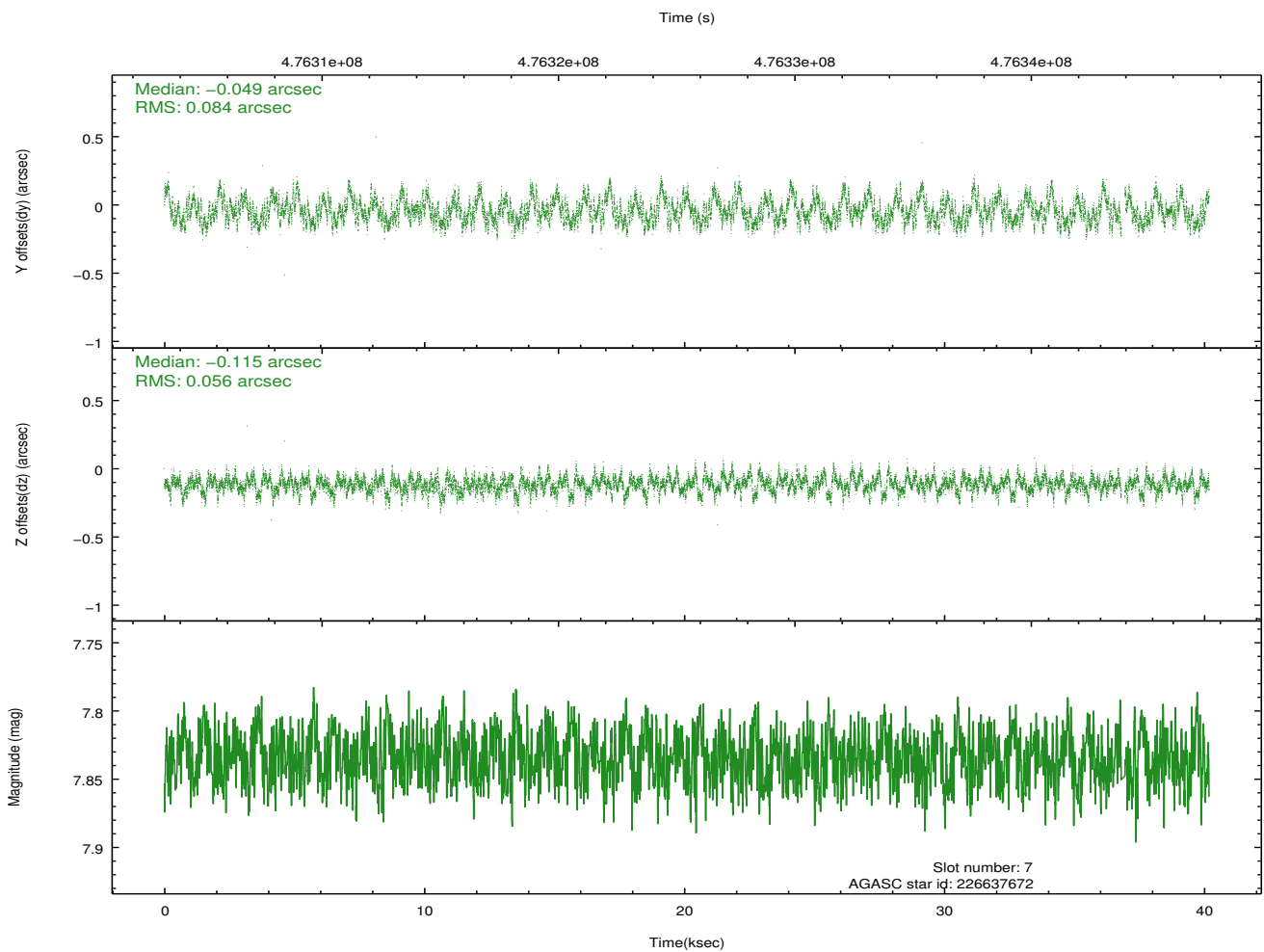
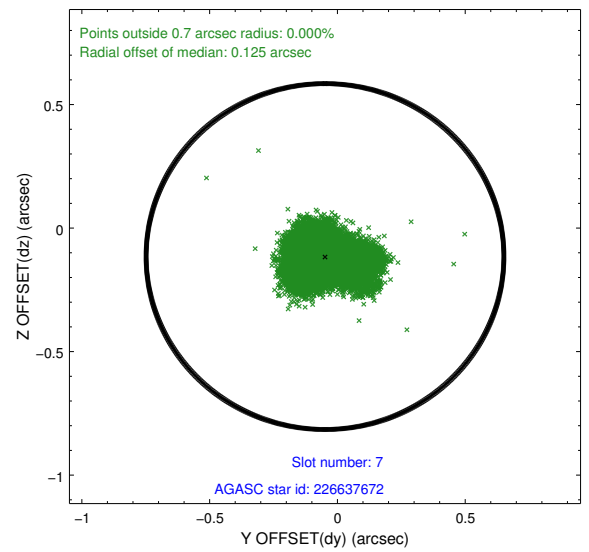
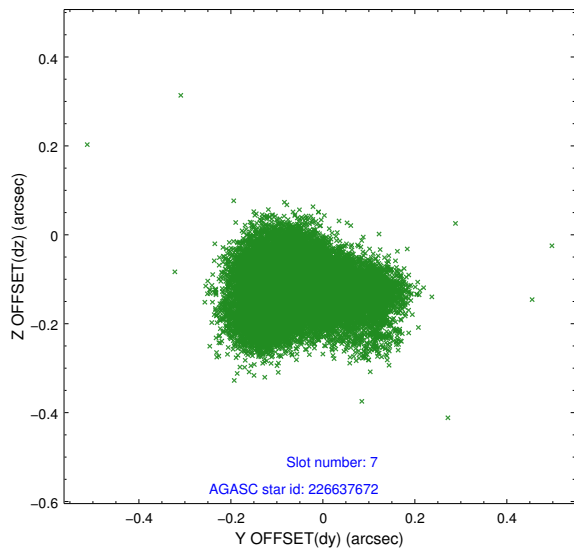
2.4.3 Slot 5



2.4.4 Slot 6

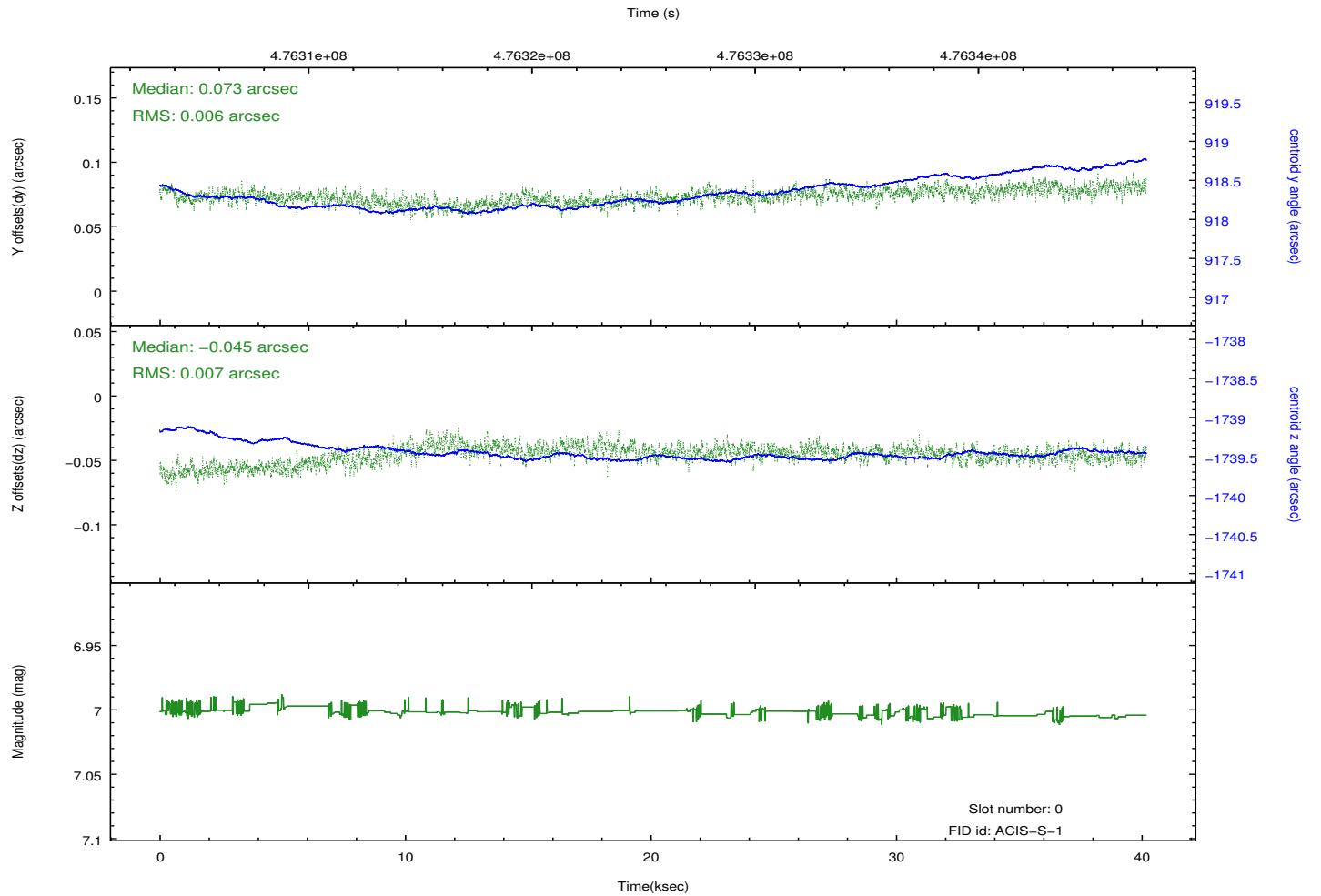
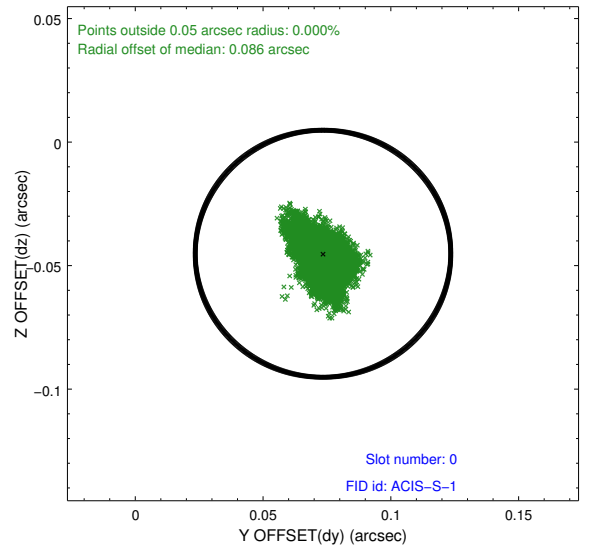
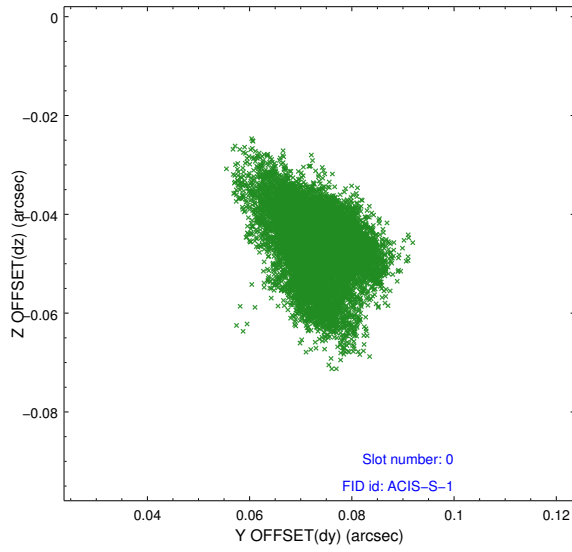


2.4.5 Slot 7

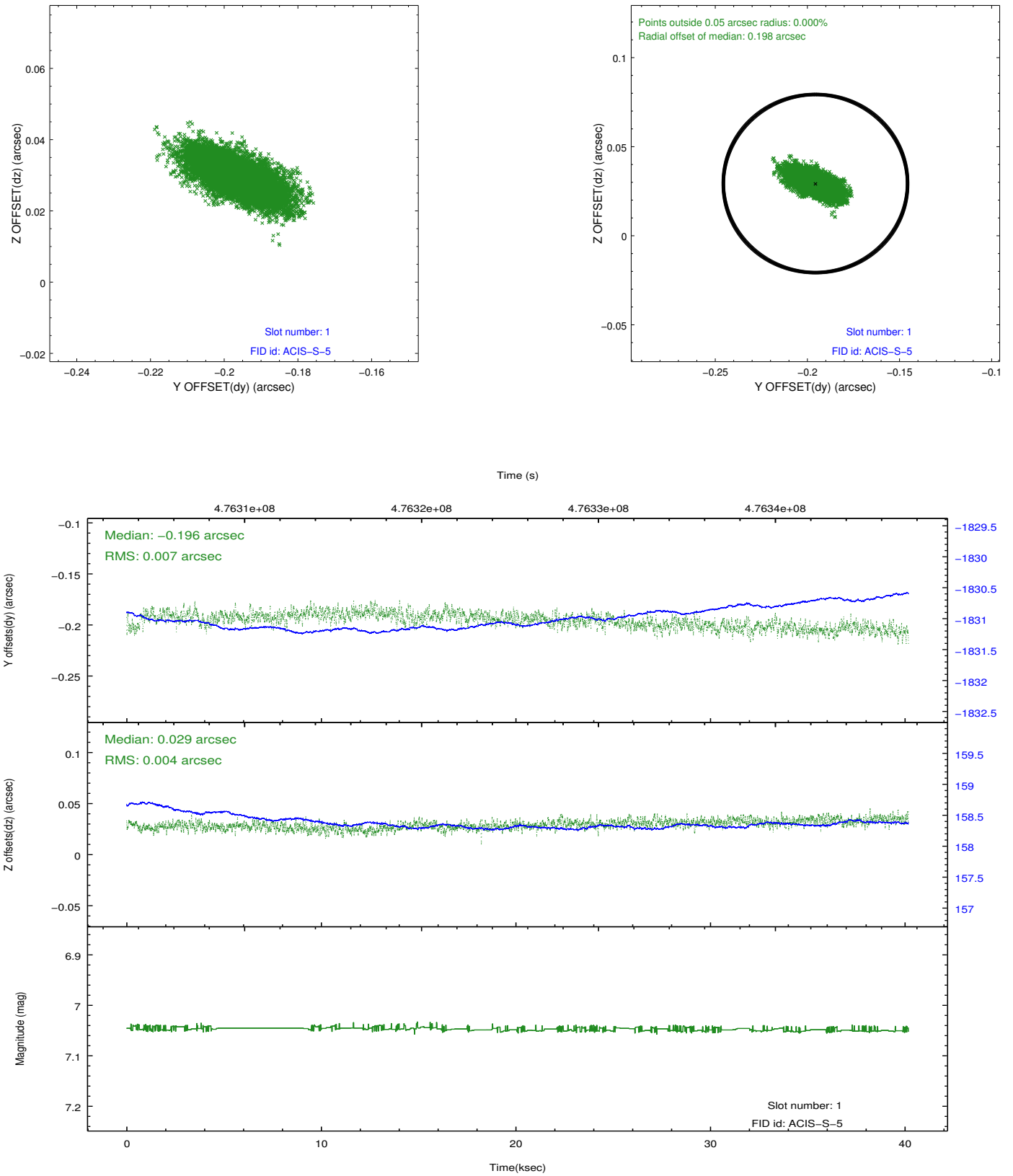


2.5 FID Slots

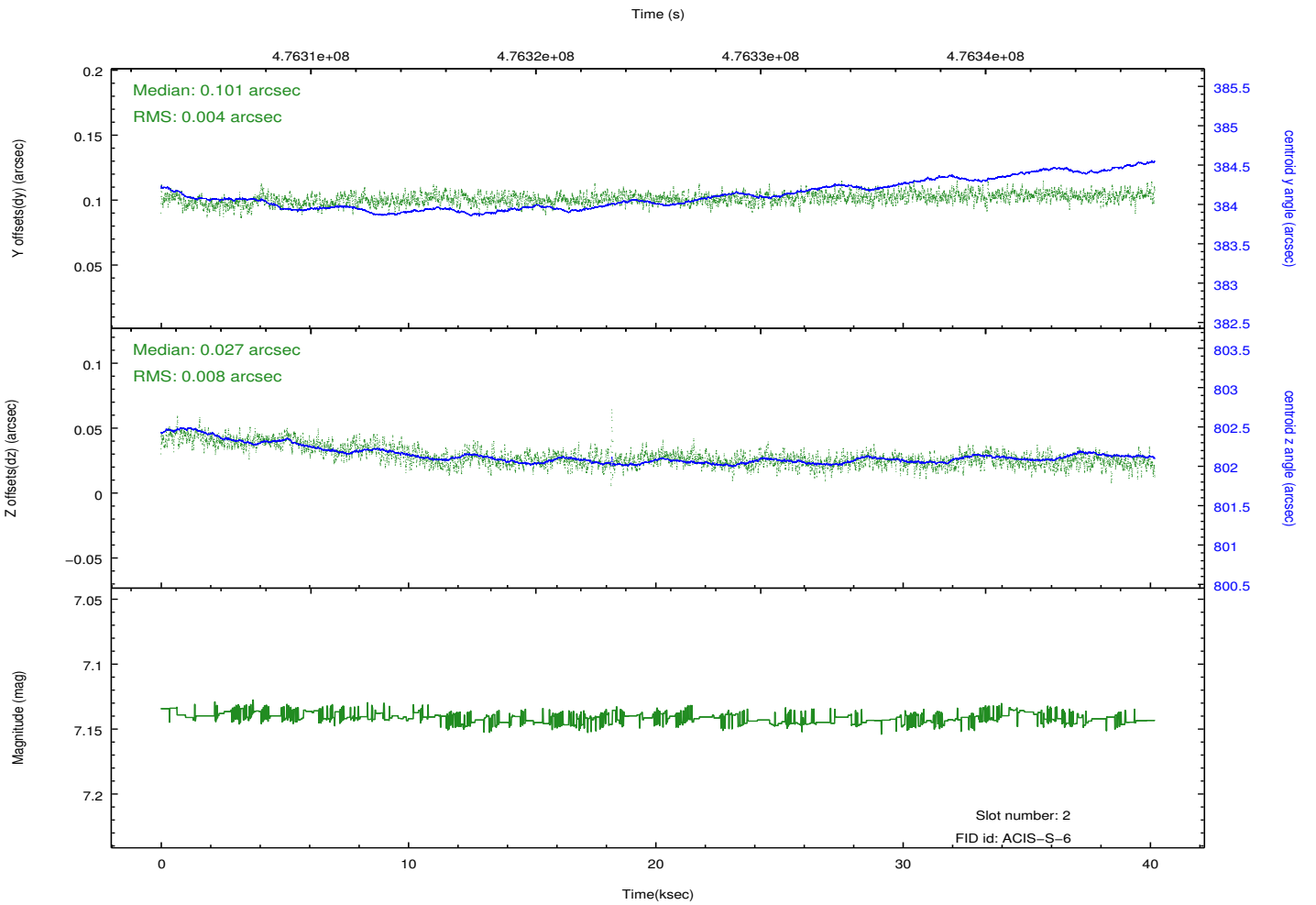
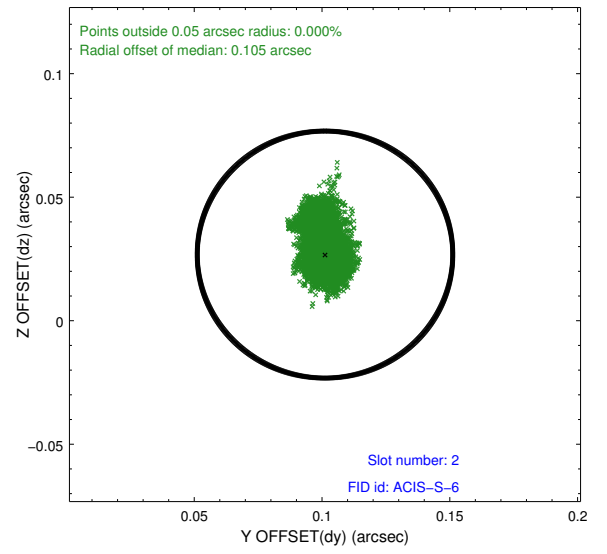
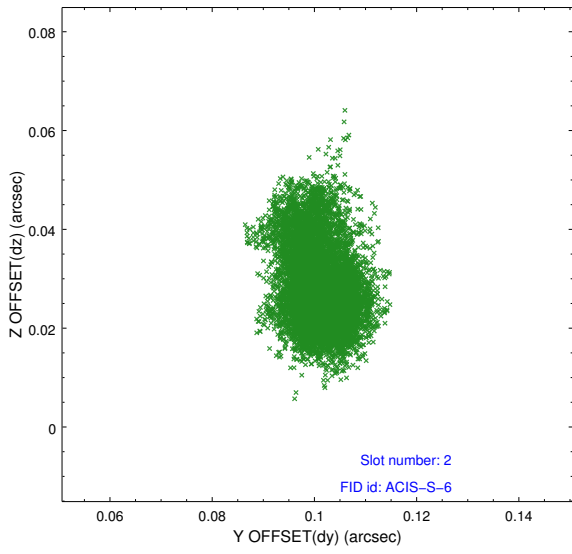
2.5.1 Slot 0



2.5.2 Slot 1



2.5.3 Slot 2



A Summary

A.1 Status

V&V Scientist	Jen Lauer
V&V Date (YYYY-MM-DD)	2014.12.09
V&V Edition	1
V&V Disposition and Status	OK
V&V Charge Time	39.971199851155

A.2 Comments

These data have been reprocessed with new aspect alignment calibration files that correct small mean offsets (up to 0.4 arcsecs) and improve overall astrometric accuracy. The new calibration was determined using data from the time period being reprocessed and was performed using cross-correlation of X-ray sources with radio and optical counterparts.