

V&V Reference Report

L2 ASCDS Version : 8.4.5

Observation 15588 - L2 Version 2
Chandra X-Ray Center

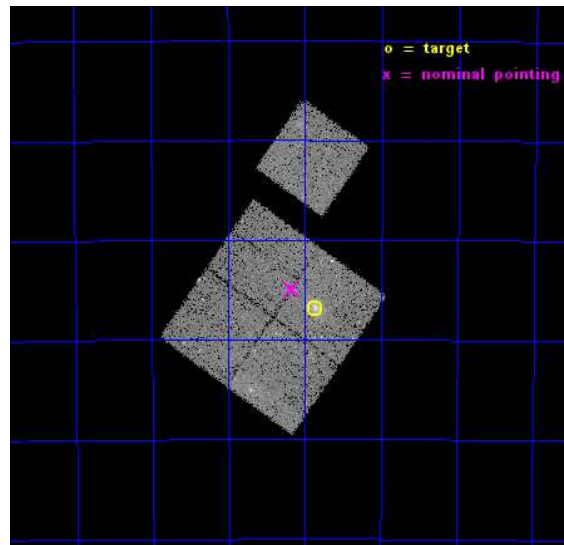
L2 Processing Date : Nov 29 2014

Contents

1	Front	2
2	OBI	3
2.1	OBI	3
2.1.1	Images	3
2.1.2	Bias	3
2.1.3	Parameters	4
2.1.4	Events	4
2.2	Compared Parameters	5
2.3	Aspect	6
2.4	Star Slots	9
2.4.1	Slot 3	9
2.4.2	Slot 4	10
2.4.3	Slot 5	11
2.4.4	Slot 6	12
2.4.5	Slot 7	13
2.5	FID Slots	14
2.5.1	Slot 0	14
2.5.2	Slot 1	15
2.5.3	Slot 2	16
A	Summary	17
A.1	Status	17
A.2	Comments	17

1 Front

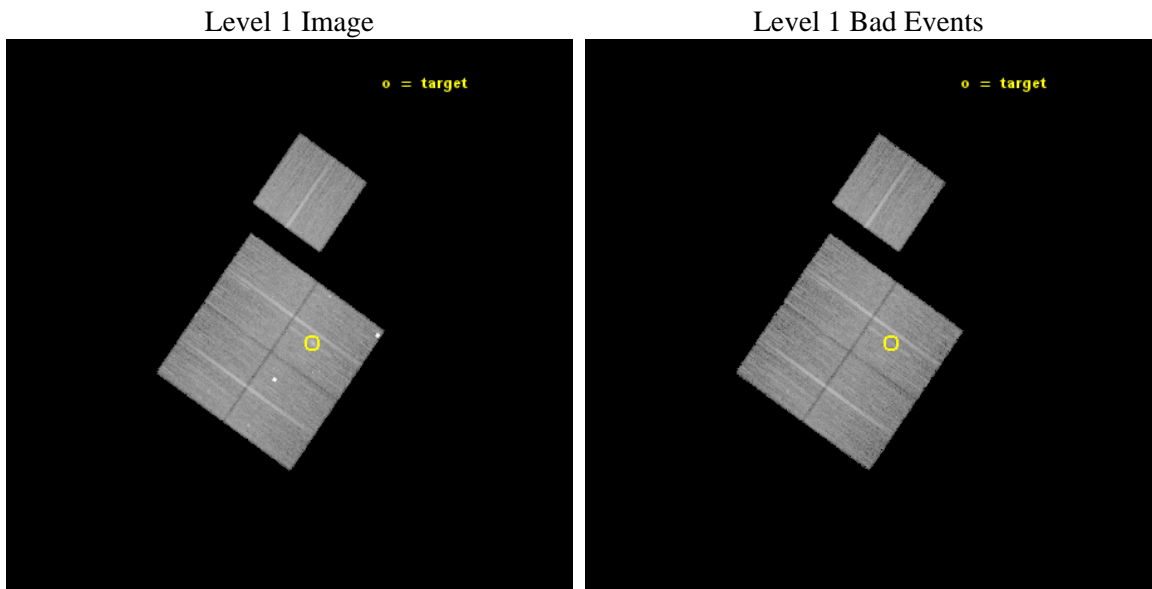
seq_num	801197	Sequence number
obs_id	15588	Observation id
title	A DETAILED CHANDRA/HST STUDY OF THE FIRST z approx 1 CLUSTER BLINDLY DISCOVERED IN THE PLANCK ALL SKY SURVEY	Proposal title
observer	Dr. Pasquale Mazzotta	Principal investigator
object	PLCKG266.6-27.3	Source name
dtcycle	0	
cycle	P	events from which exps? Prim/Second/Both
ra_targ	93.966667	Observer's specified target RA [deg]
dec_targ	-57.781	Observer's specified target Dec [deg]
ra_nom	94.043810978095	Nominal RA [deg]
dec_nom	-57.749301042254	Nominal Dec [deg]
roll_nom	35.173933518455	Nominal Roll [deg]
revision	2	Processing version of data
ontime	24082.523755968	Sum of GTIs [s]
livetime	23767.8678538	Livetime [s]
ontime0	24082.400635958	Sum of GTIs [s]
ontime1	24076.15959537	Sum of GTIs [s]
ontime2	24079.341675639	Sum of GTIs [s]
ontime3	24082.523755968	Sum of GTIs [s]
ontime6	24082.359595954	Sum of GTIs [s]
l2events	67620	Number of level 2 events



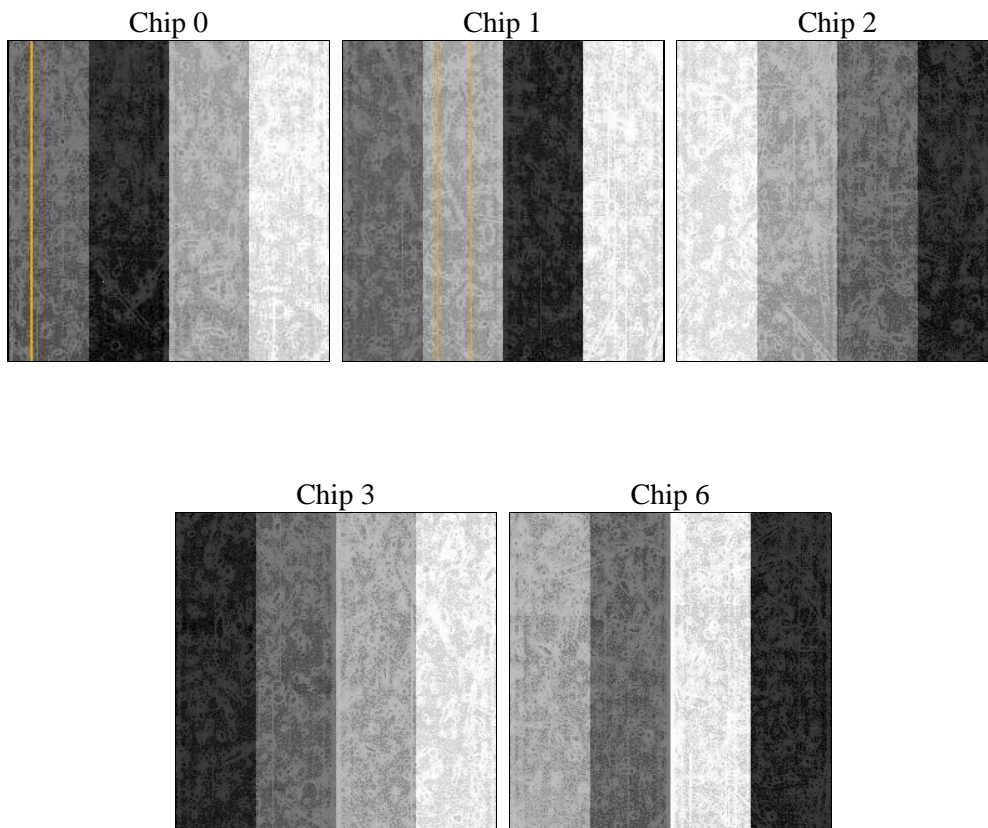
2 OBI

2.1 OBI

2.1.1 Images



2.1.2 Bias



2.1.3 Parameters

obi_num	0	Obi number	sched_exp_time	24000.000000	[s] Scheduled observation exposure time
ascdsver	10.3	Processing system revision	ontime	24082.523755968	Sum of GTIs [s]
caldsver	4.6.4	 	ontime0	24082.400635958	Sum of GTIs [s]
date	2014-11-29T20:34:57	Date and time of file creation	ontime1	24076.15959537	Sum of GTIs [s]
revision	2	Processing version of data	ontime2	24079.341675639	Sum of GTIs [s]
			ontime3	24082.523755968	Sum of GTIs [s]
			ontime6	24082.359595954	Sum of GTIs [s]
			l1events	629182	Number of level 1 events

2.1.4 Events

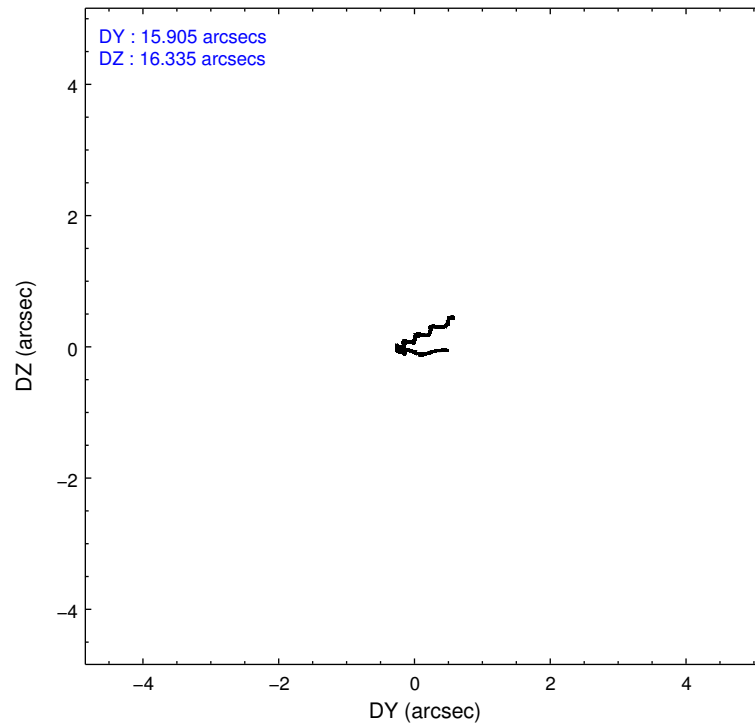
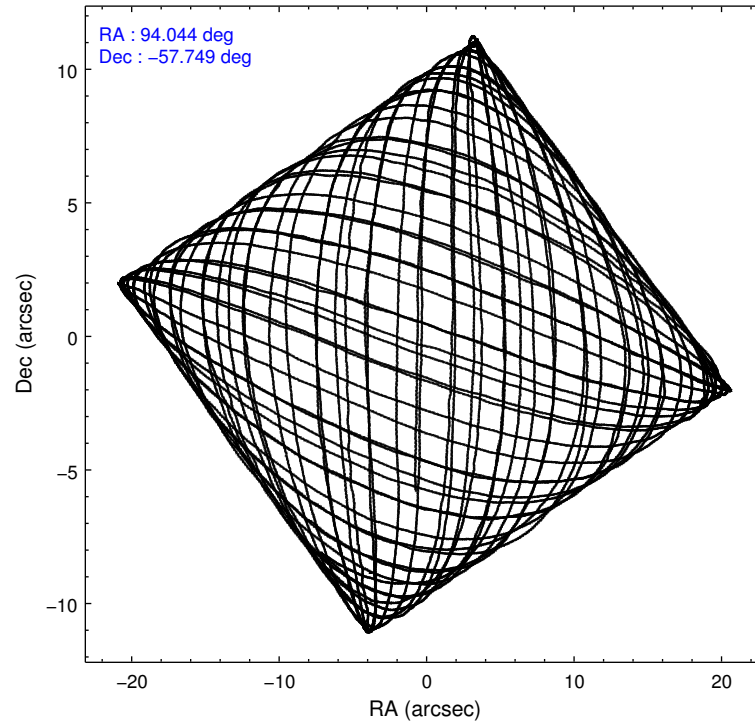
	ccd 0	ccd 1	ccd 2	ccd 3	ccd 6
level 1 events	114914	125304	127364	133365	128235
rejected events	100126	100968	112841	108343	112858
rejected %	87%	80%	88%	81%	88%

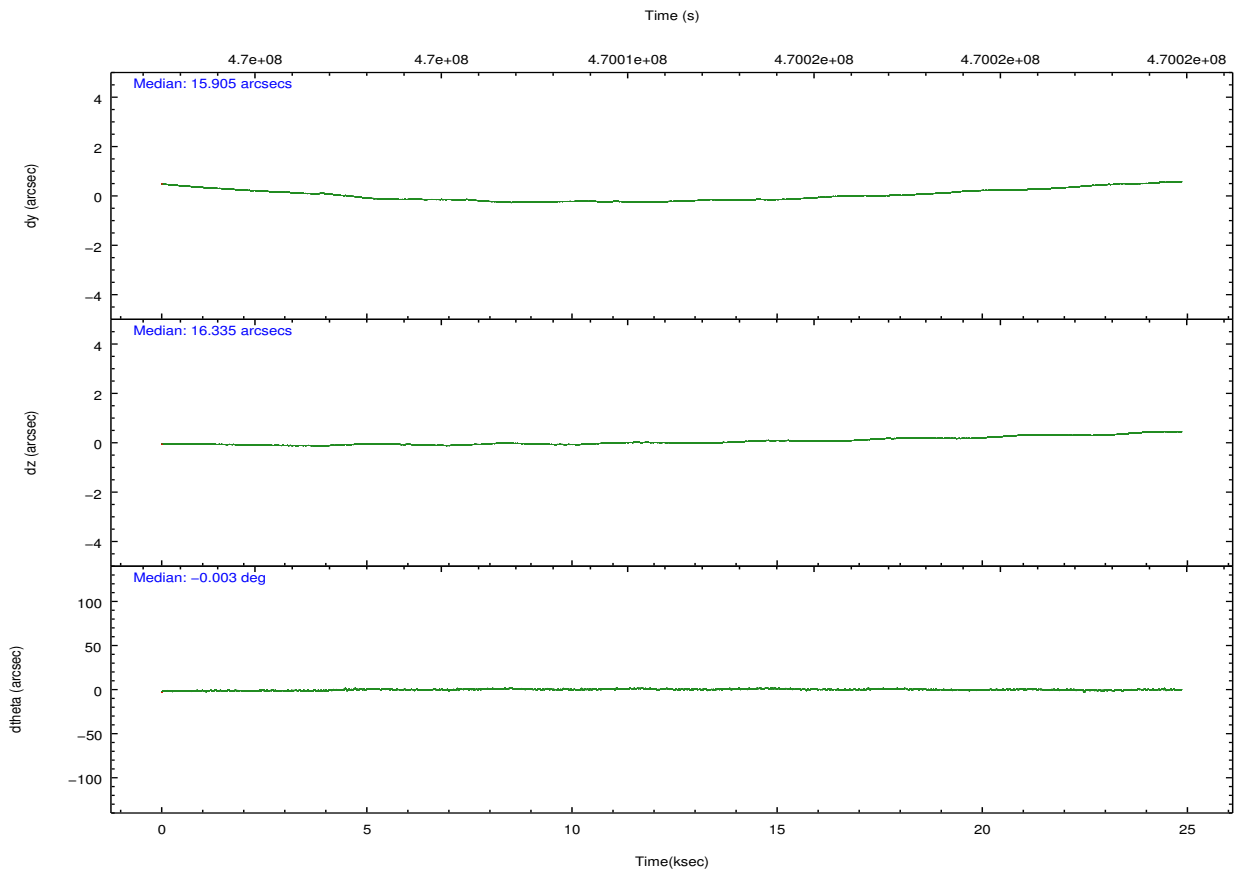
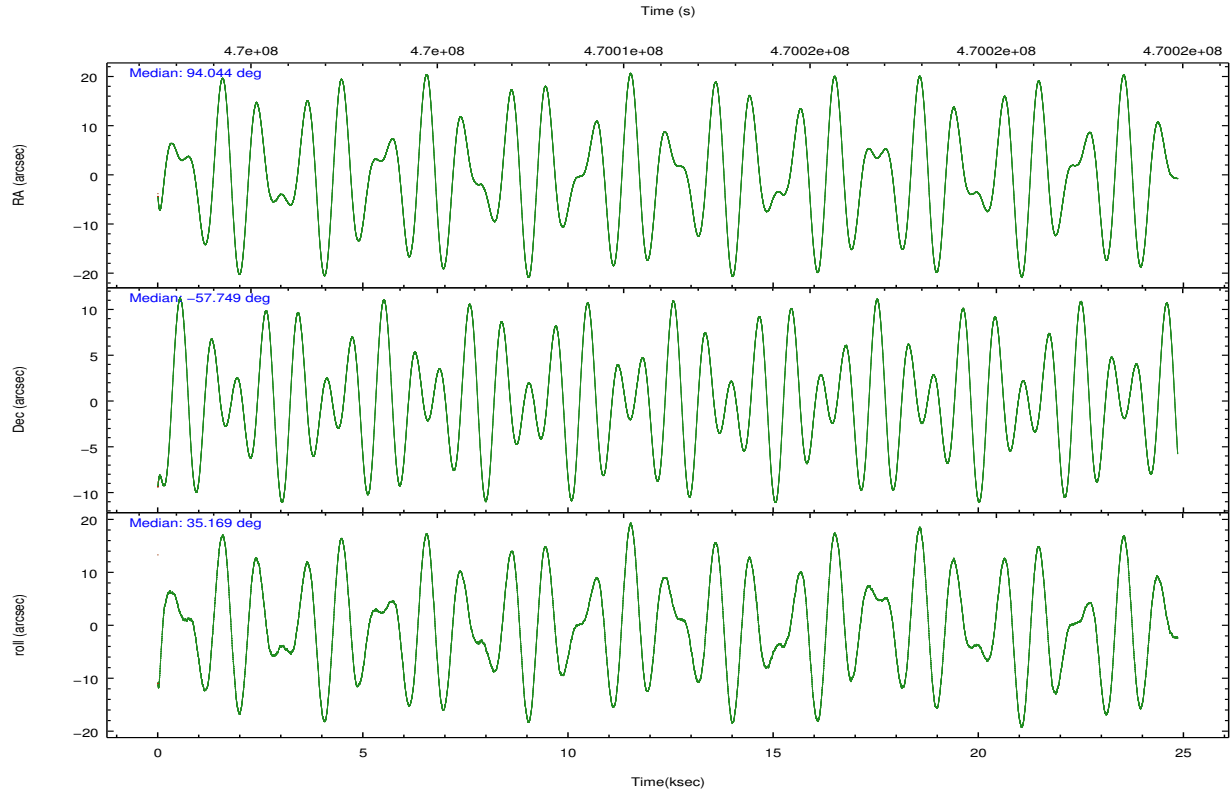
	ccd 0	ccd 1	ccd 2	ccd 3	ccd 6
grade 0 events	5090	5949	5182	15301	5382
	4%	4%	4%	11%	4%
grade 1 events	74	54	80	124	57
	0%	0%	0%	0%	0%
grade 2 events	3637	11476	3587	3418	3404
	3%	9%	2%	2%	2%
grade 3 events	1535	1617	1446	1657	1583
	1%	1%	1%	1%	1%
grade 4 events	1459	1655	1476	1610	1526
	1%	1%	1%	1%	1%
grade 5 events	5793	6047	5653	6661	6279
	5%	4%	4%	4%	4%
grade 6 events	3072	3645	2834	3044	3484
	2%	2%	2%	2%	2%
grade 7 events	94254	94861	107106	101550	106520
	82%	75%	84%	76%	83%

2.2 Compared Parameters

Parameter	Planned	Actual	Parameter	Planned	Actual
Instrument	ACIS	ACIS	Obspar format version number	7	7
Detector	ACIS-01236	ACIS-01236	Obspar file type	PREDICTED	ACTUAL
Grating	NONE	NONE	Obspar update status	NONE	UPDATED
Data mode	VFAINT	VFAINT	CCD I0 on	Y	Y
Observation mode	POINTING	POINTING	CCD I1 on	Y	Y
[deg] Pointing RA	94.022331	94.04381097809528	CCD I2 on	Y	Y
[deg] Pointing Dec	-57.774301	-57.74930104225442	CCD I3 on	Y	Y
[deg] Pointing Roll	34.947076	35.17393351845543	CCD S0 on	N	N
[mm] SIM focus pos	-0.782348	-0.7809083437167272	CCD S1 on	N	N
[mm] SIM defocus	0	0.001439871863259334	CCD S2 on	O1	Y
[mm] SIM translation stage pos	-225.842463	-225.8433433320239	CCD S3 on	N	N
[mm] SIM translation stage offset	-7.75	-7.749109670905796	CCD S4 on	N	N
[s] Observation start time (MET)	469999613.184000	469997964.54641	CCD S5 on	N	N
Observation start date	2012-11-22T19:25:46	2012-11-22T18:59:24	Number of optional ACIS chips dropped	0	0
[s] Observation end time (MET)	470023613.184000	470024663.74784	On-chip summing requested	N	N
Observation end date	2012-11-23T02:05:46	2012-11-23T02:24:23	Subarray requested	NONE	NONE
Read mode	TIMED	TIMED	Alternating exposures requested	N	N
			[s] Primary exposure time	0.000000	3.1

2.3 Aspect





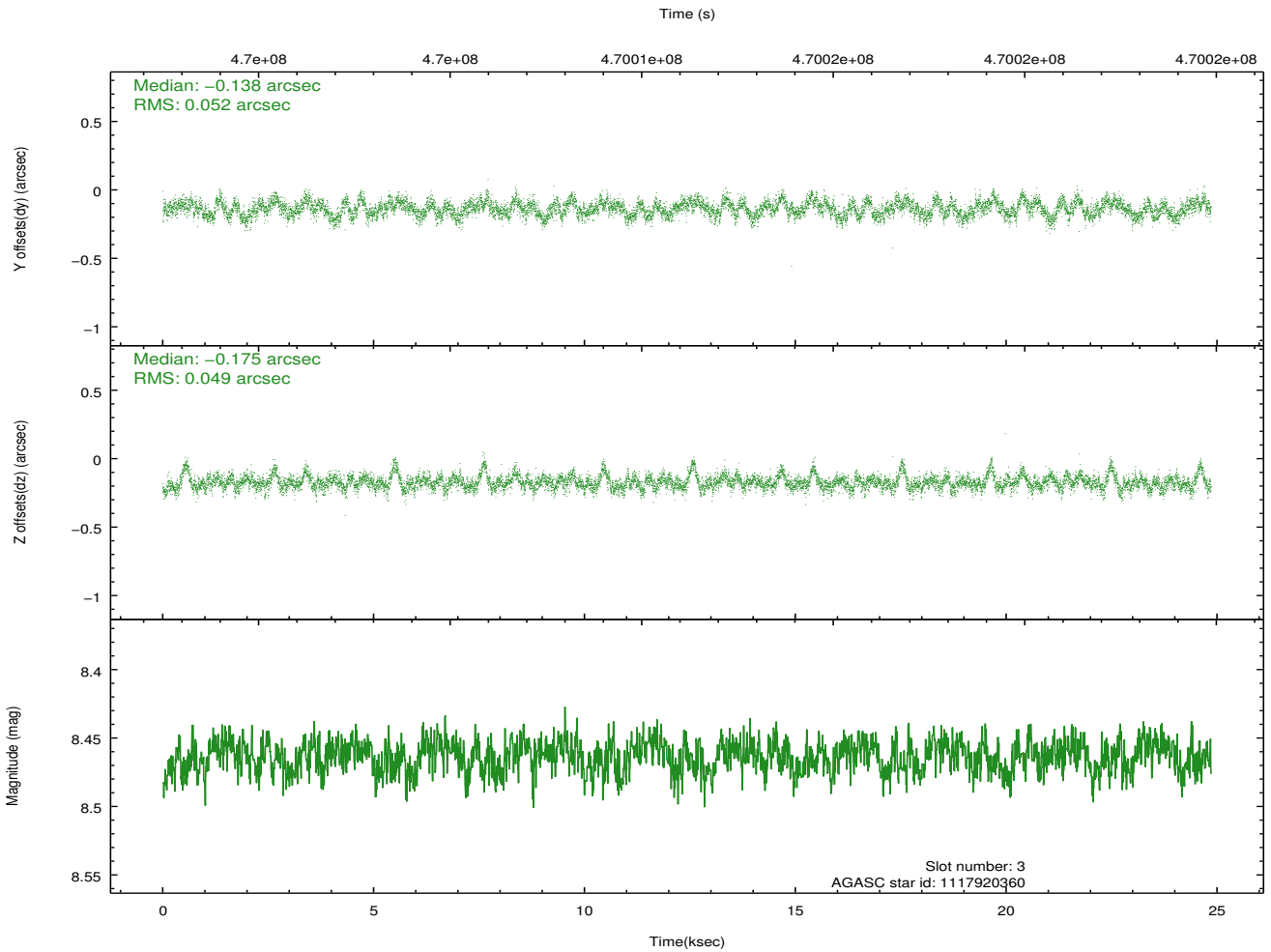
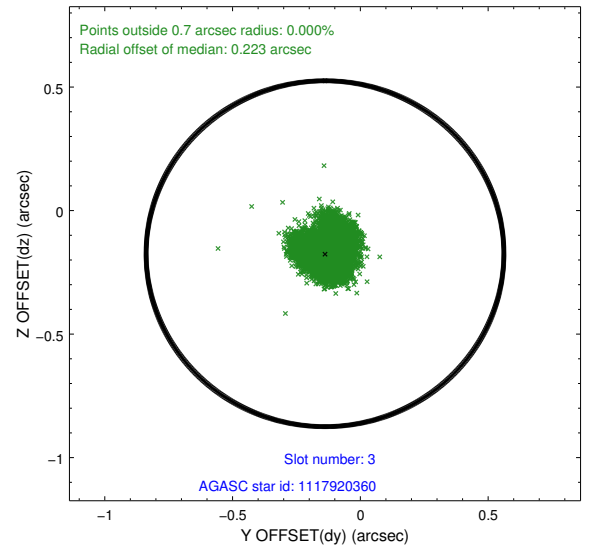
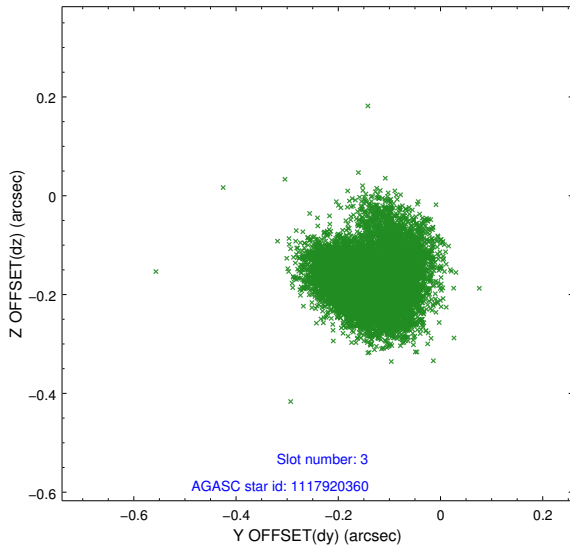
Slot Statistics

slot	status	used	id	mag	n_pts	med_dy	med_dz	dr1	dr2	ra	dec	mean_y	mean_z
0	FID		ACIS-I-1	7.14	6063	0.175	-0.142	0.008	0.015	0.000000	0.000000	923.53	-999.24
1	FID		ACIS-I-5	7.13	6060	-0.326	0.134	0.009	0.013	0.000000	0.000000	-1825.04	898.40
2	FID		ACIS-I-6	7.14	6063	0.059	0.078	0.010	0.015	0.000000	0.000000	388.79	1543.02
3	GUIDE	used	1117920360	8.46	12120	-0.138	-0.175	0.076	0.127	92.689586	-57.826981	-2216.88	1287.23
4	GUIDE	used	1119617128	9.10	12112	0.403	0.625	0.111	0.186	93.986624	-58.000911	-522.48	-628.73
5	GUIDE	used	1119617976	7.99	12121	-0.202	-0.270	0.092	0.145	94.543198	-57.336411	1730.52	709.70
6	GUIDE	used	1119620096	9.02	12113	-0.181	-0.020	0.086	0.140	94.803811	-58.054312	638.81	-1685.27
7	GUIDE	used	1119619792	9.41	12106	0.112	-0.163	0.130	0.199	93.499770	-57.916921	-1114.79	148.22

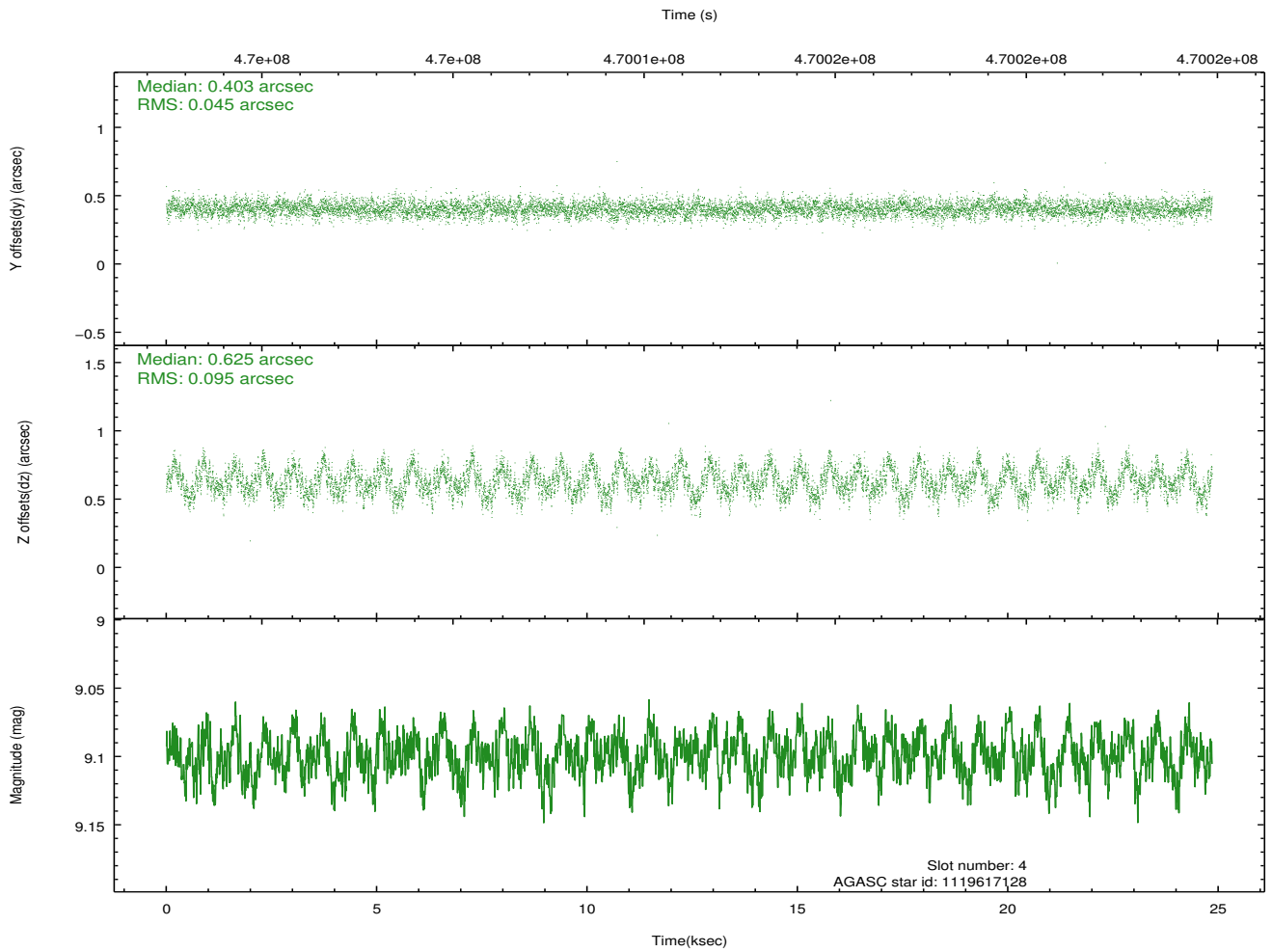
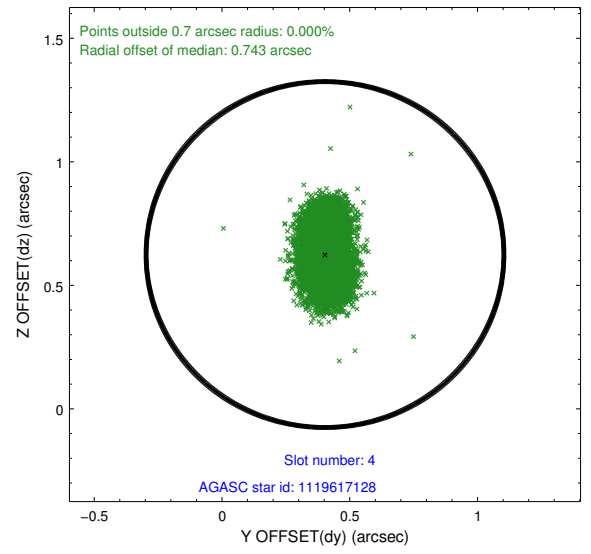
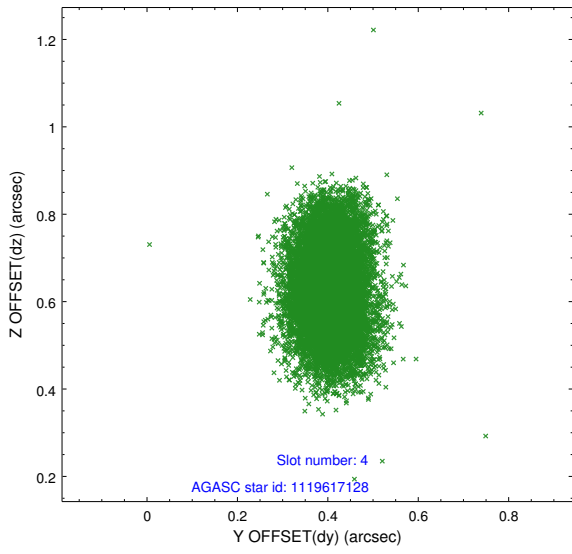
∞

2.4 Star Slots

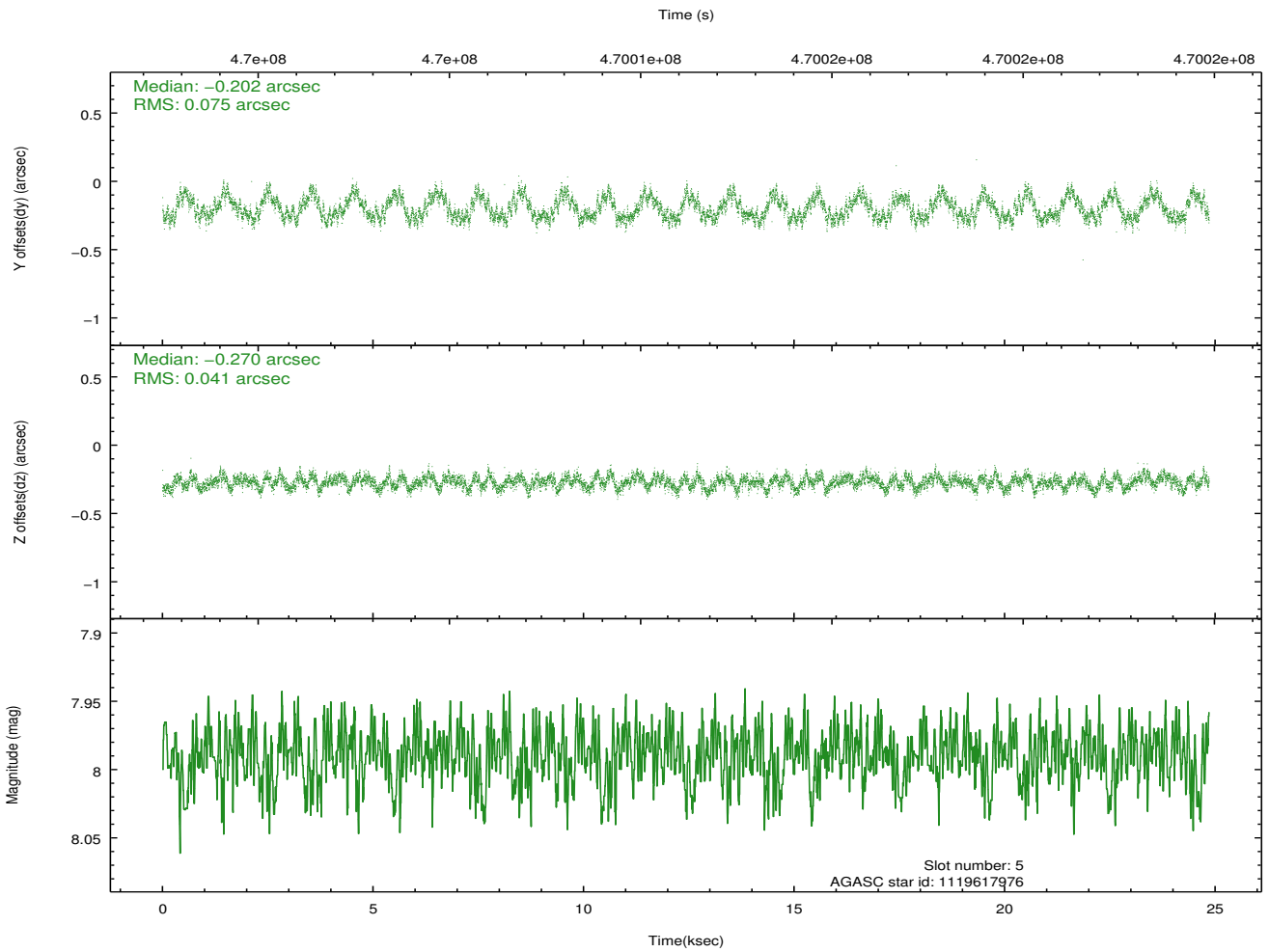
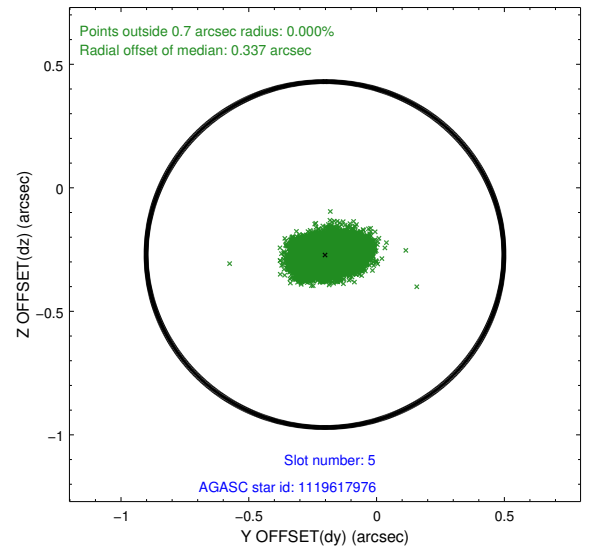
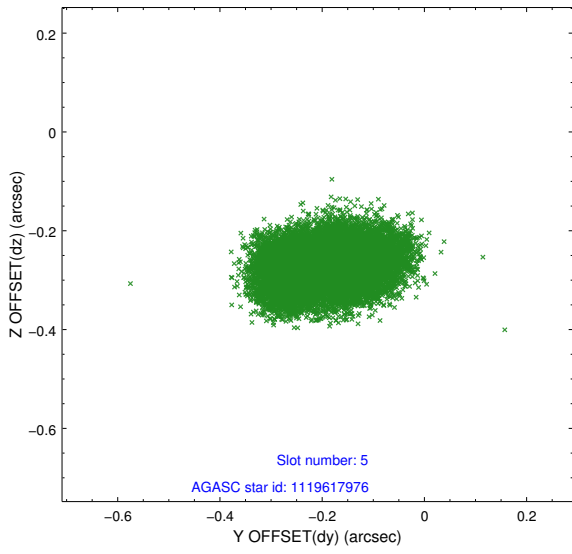
2.4.1 Slot 3



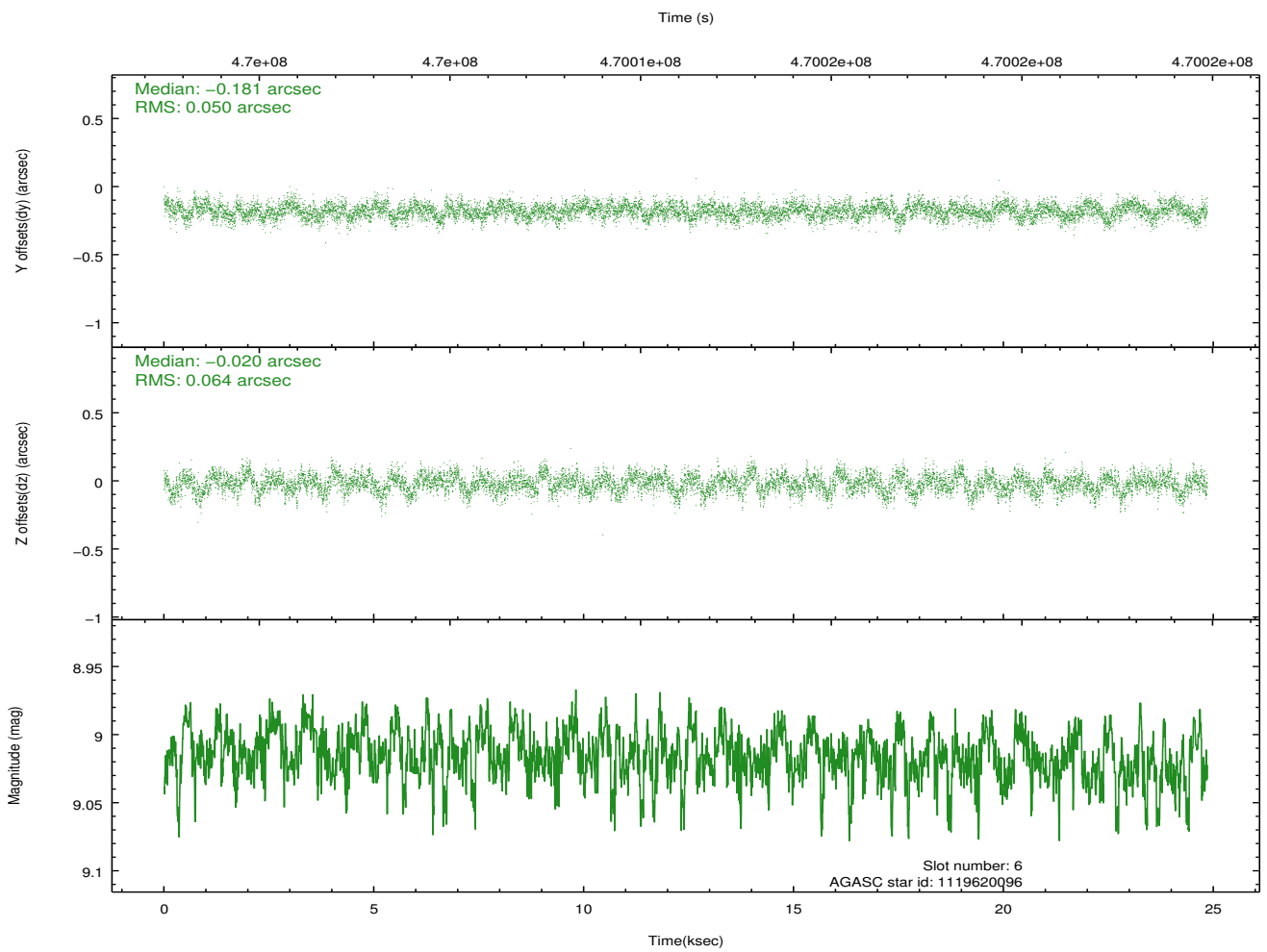
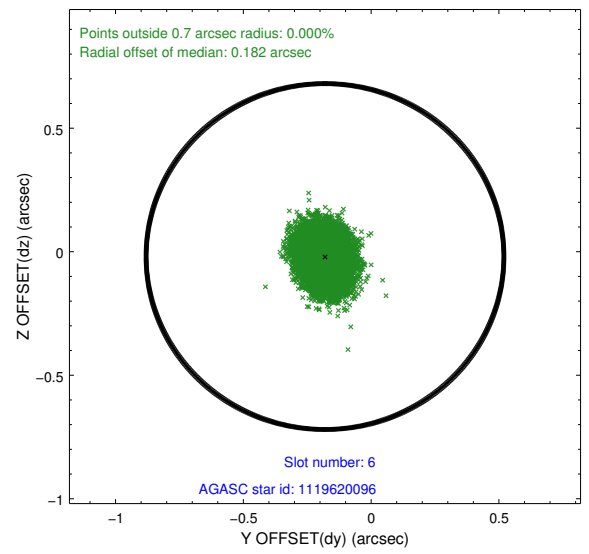
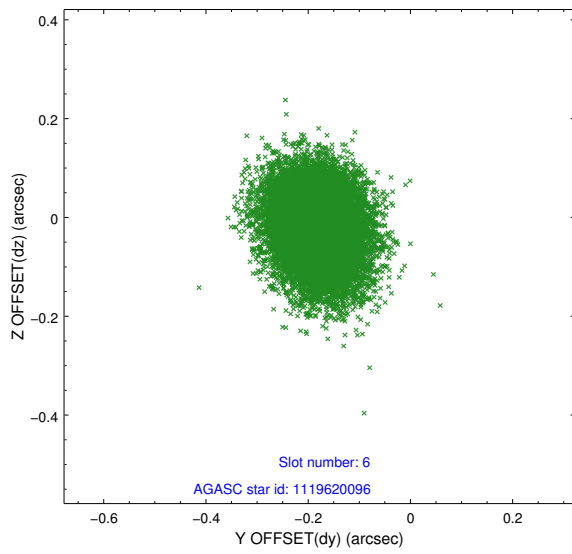
2.4.2 Slot 4



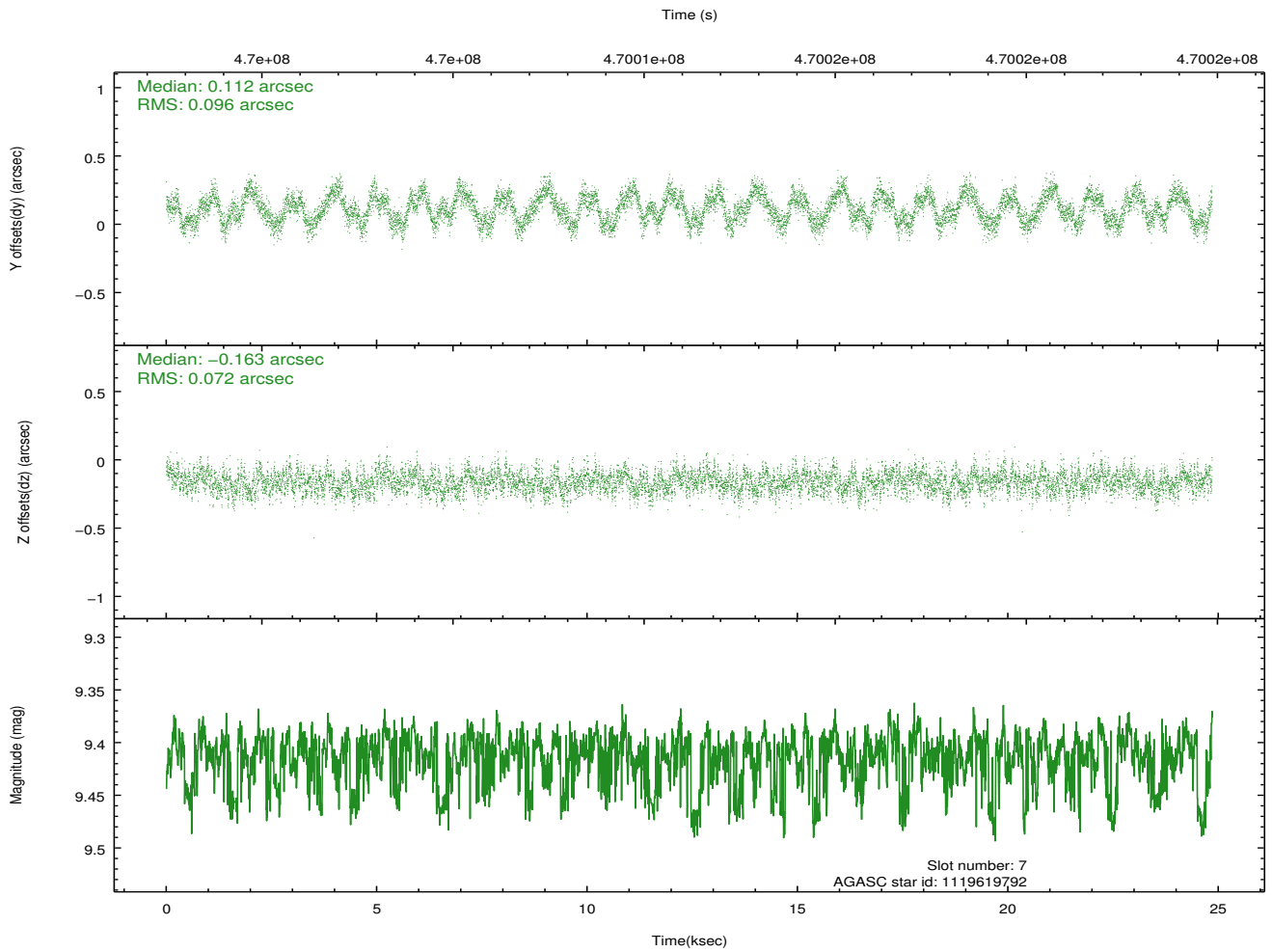
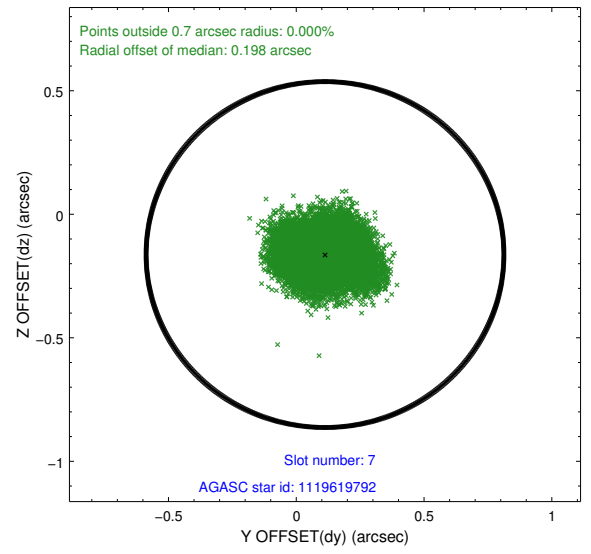
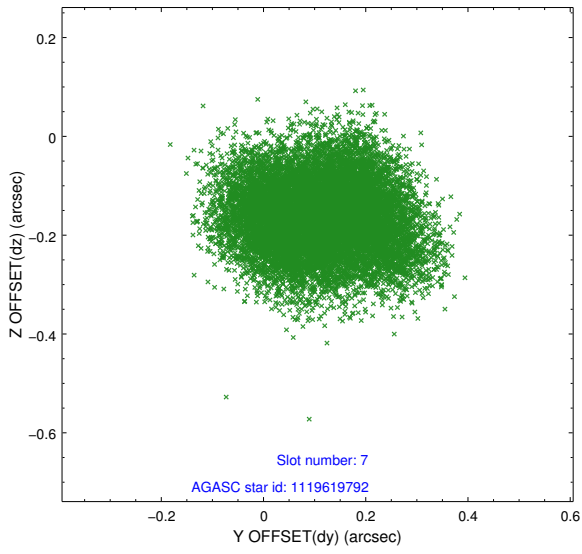
2.4.3 Slot 5



2.4.4 Slot 6

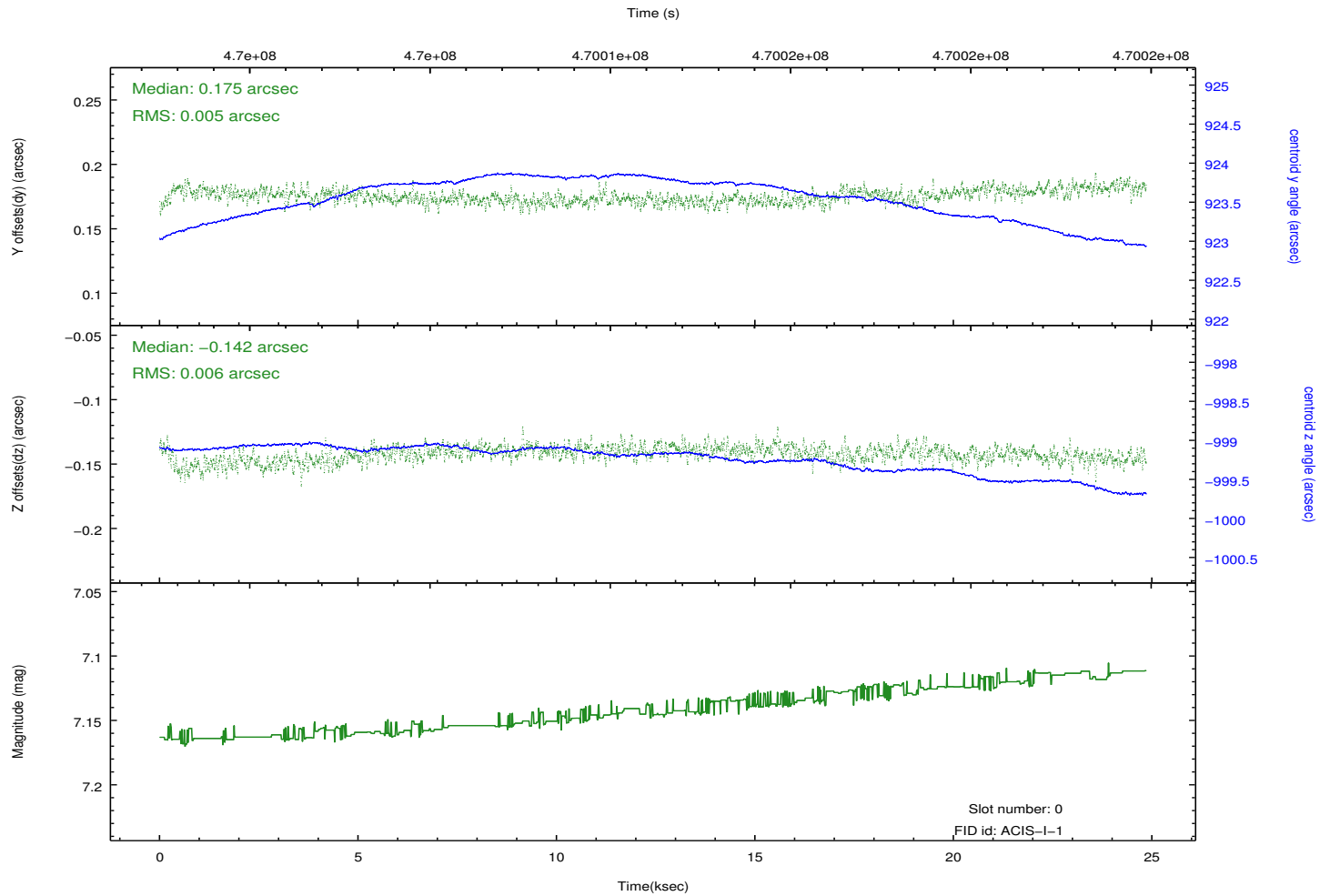
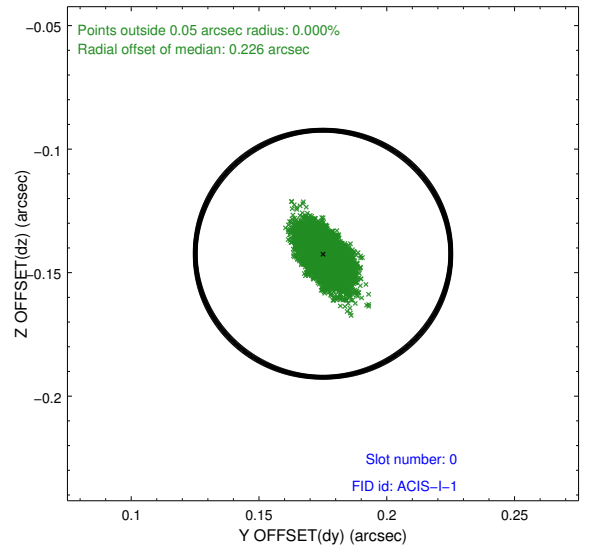
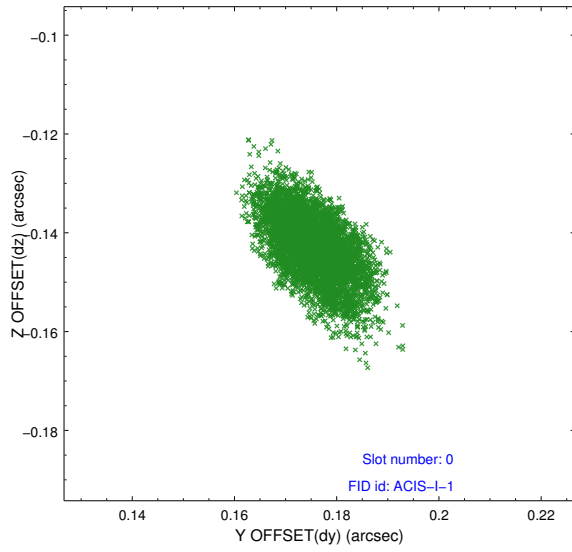


2.4.5 Slot 7

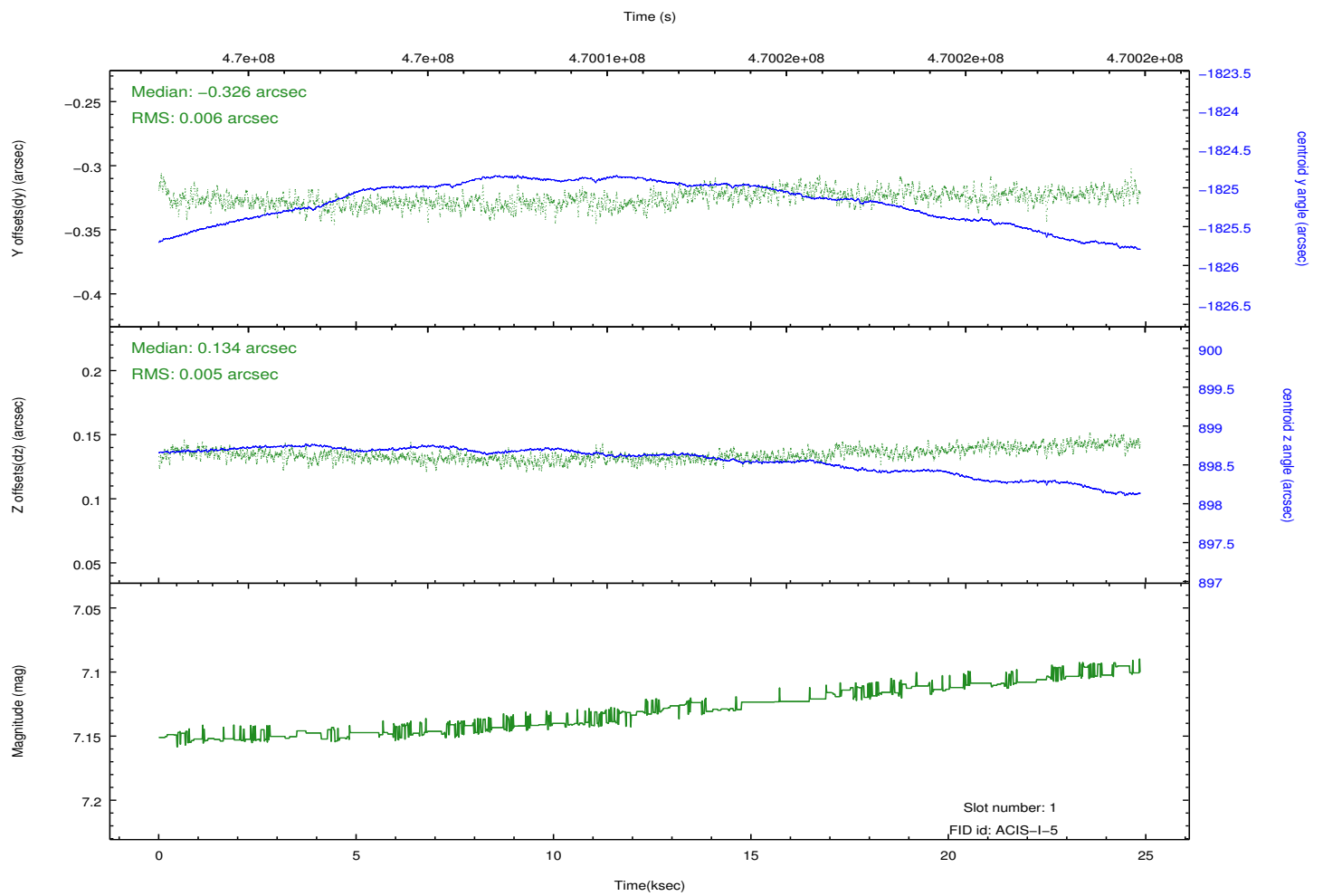
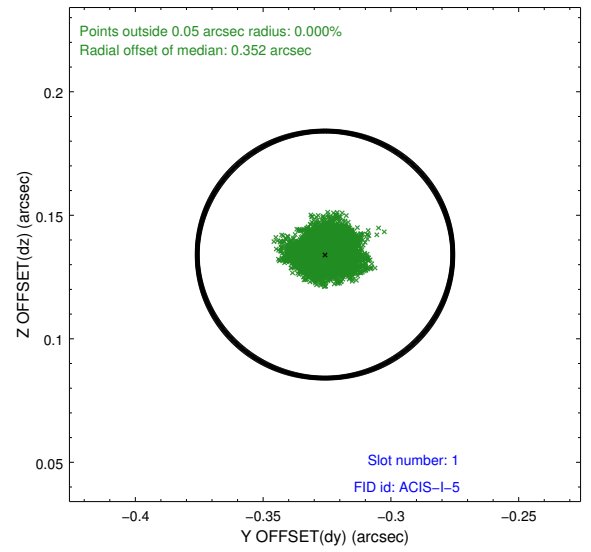
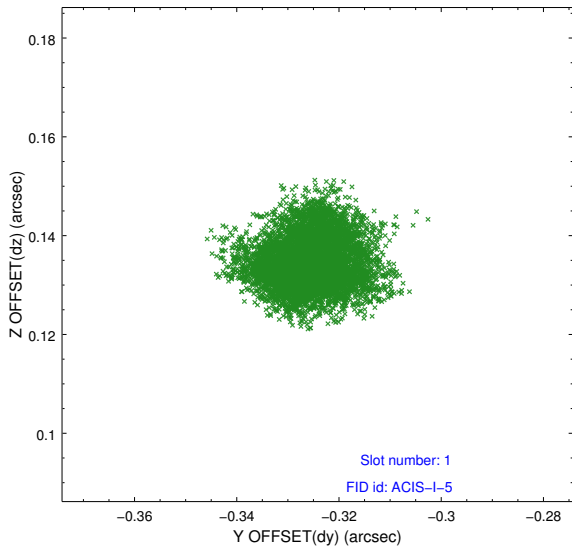


2.5 FID Slots

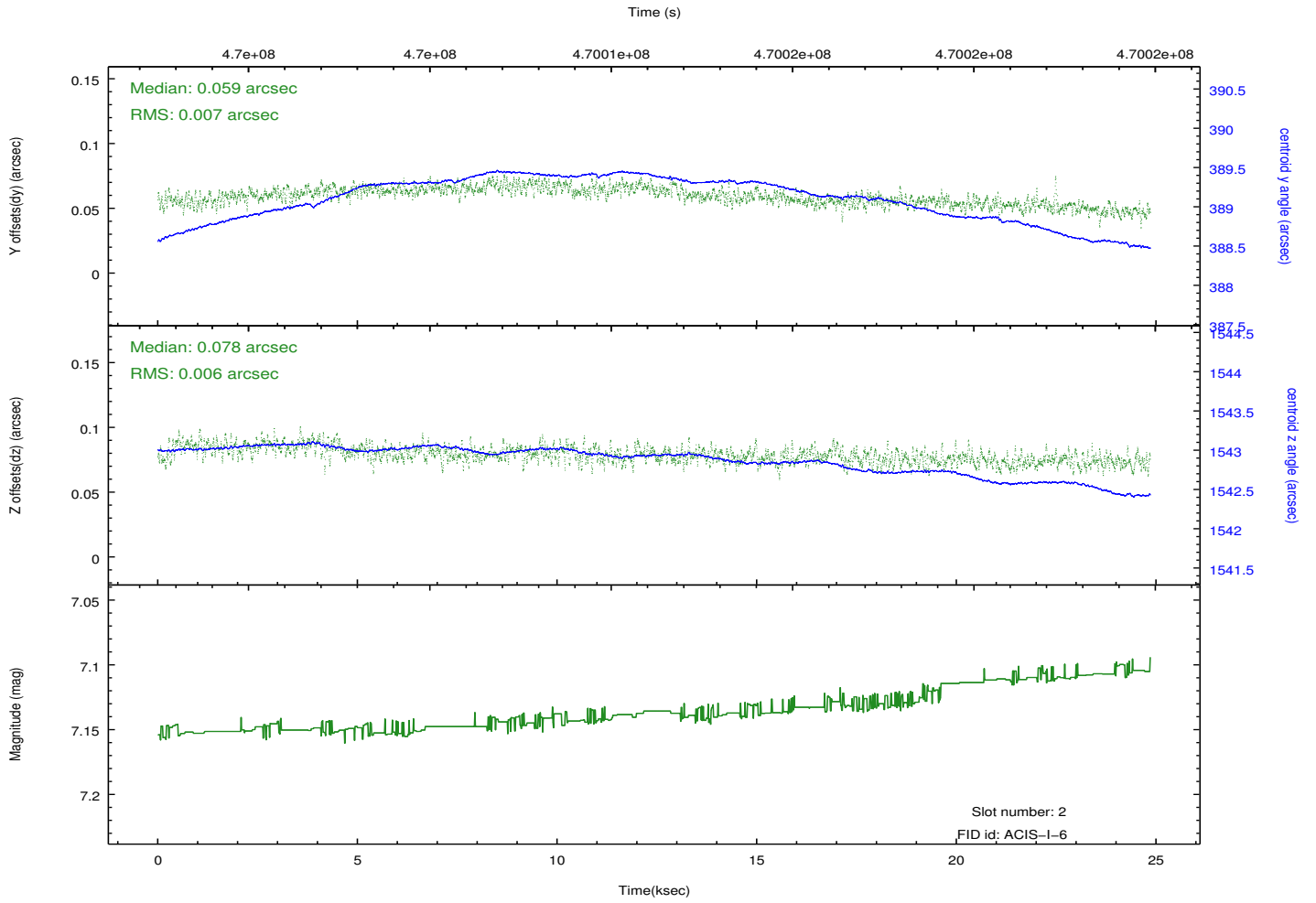
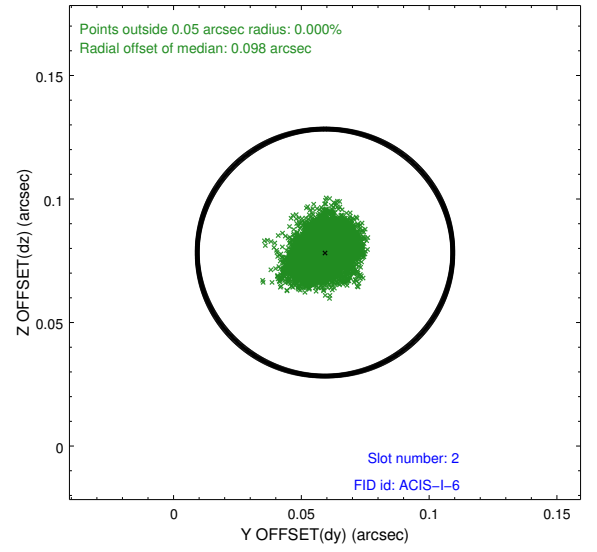
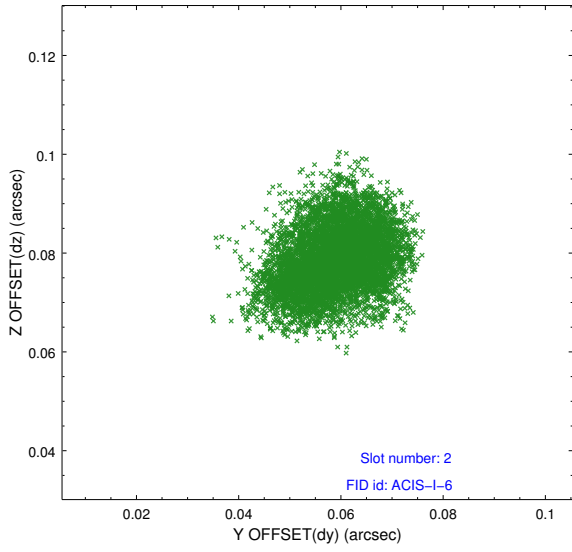
2.5.1 Slot 0



2.5.2 Slot 1



2.5.3 Slot 2



A Summary

A.1 Status

V&V Scientist	Beth Sundheim
V&V Date (YYYY-MM-DD)	2014.12.03
V&V Edition	1
V&V Disposition and Status	OK
V&V Charge Time	24.082523755968

A.2 Comments

Joint proposal with HST.

These data have been reprocessed with new aspect alignment calibration files that correct small mean offsets (up to 0.4 arcsecs) and improve overall astrometric accuracy. The new calibration was determined using data from the time period being reprocessed and was performed using cross-correlation of X-ray sources with radio and optical counterparts.