

V&V Reference Report

L2 ASCDS Version : 10

Observation 16488 - L2 Version 3
Chandra X-Ray Center

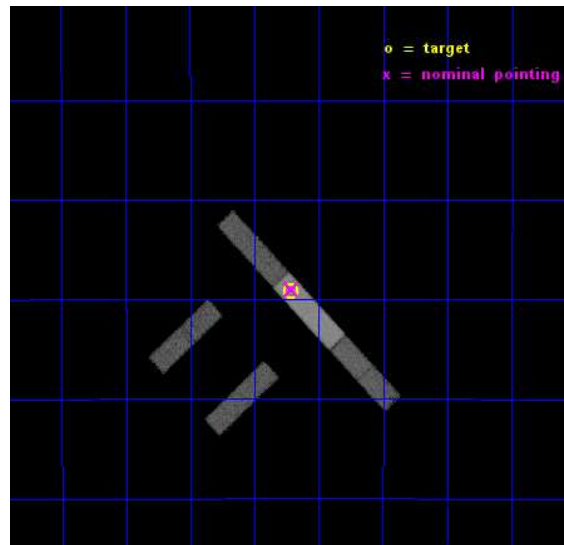
L2 Processing Date : Dec 8 2014

Contents

1	Front	2
2	OBI	3
2.1	OBI	3
2.1.1	Images	3
2.1.2	Bias	3
2.1.3	Parameters	4
2.1.4	Events	4
2.2	Compared Parameters	5
2.3	Aspect	6
2.4	Star Slots	9
2.4.1	Slot 3	9
2.4.2	Slot 4	10
2.4.3	Slot 5	11
2.4.4	Slot 6	12
2.5	FID Slots	13
2.5.1	Slot 0	13
2.5.2	Slot 1	14
2.5.3	Slot 2	15
A	Summary	16
A.1	Status	16
A.2	Comments	16

1 Front

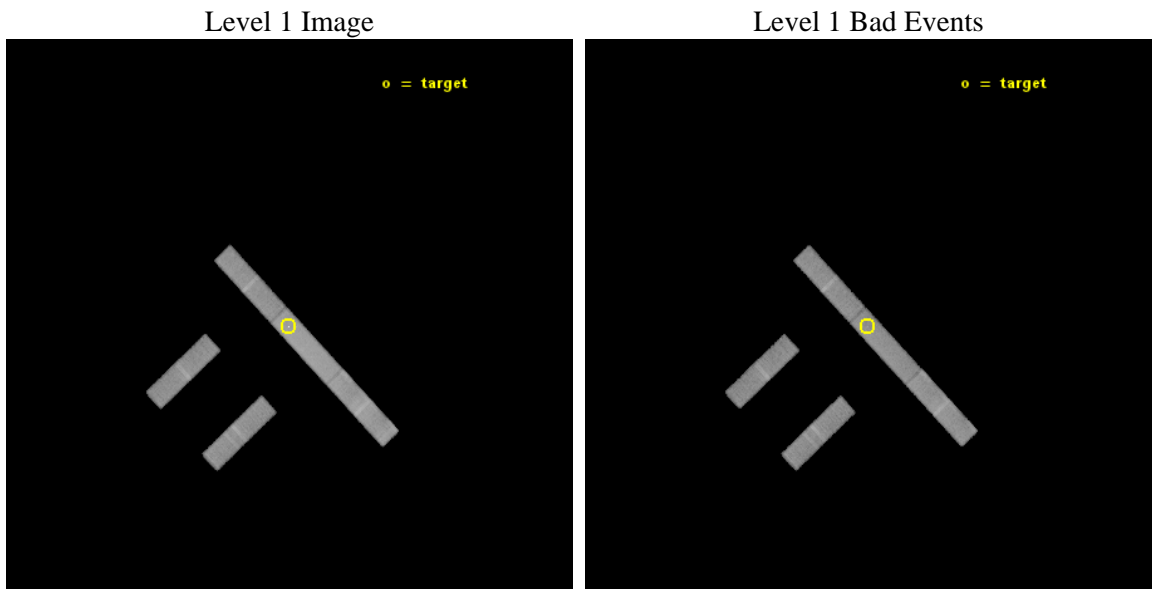
seq_num	502266	Sequence number
obs_id	16488	Observation id
title	A search for absorption features in the afterglow of the unusual GRB 130925A	Proposal title
observer	Dr. Eric Bellm	Principal investigator
object	GRB130925A	Source name
dtcycle	0	
cycle	P	events from which exps? Prim/Second/Both
ra_targ	41.179167	Observer's specified target RA [deg]
dec_targ	-26.153194	Observer's specified target Dec [deg]
ra_nom	41.178327819737	Nominal RA [deg]
dec_nom	-26.150264700884	Nominal Dec [deg]
roll_nom	46.661044997651	Nominal Roll [deg]
revision	3	Processing version of data
ontime	46073.786278307	Sum of GTIs [s]
livetime	44257.460115181	Livetime [s]
ontime2	46073.622118294	Sum of GTIs [s]
ontime3	46073.704198301	Sum of GTIs [s]
ontime6	46073.745238304	Sum of GTIs [s]
ontime7	46073.786278307	Sum of GTIs [s]
ontime8	46073.663158298	Sum of GTIs [s]
l2events	91717	Number of level 2 events



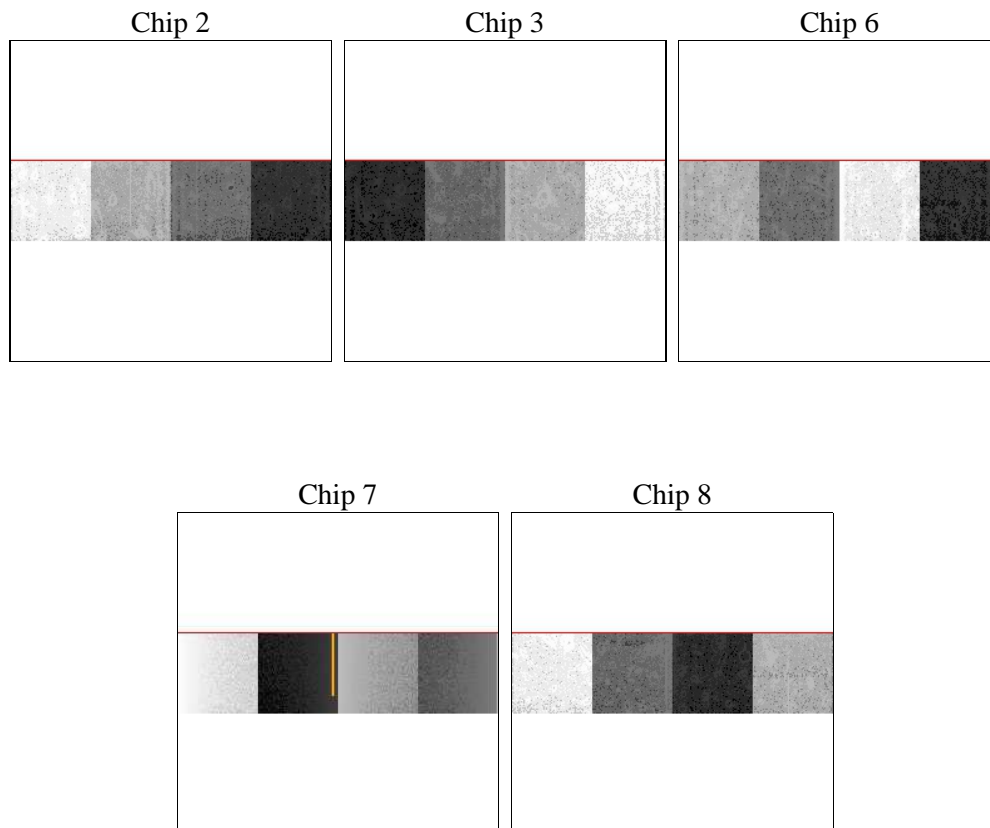
2 OBI

2.1 OBI

2.1.1 Images



2.1.2 Bias



2.1.3 Parameters

obi_num	0	Obi number	sched_exp_time	46000.000000	[s] Scheduled observation exposure time
ascdsver	10.3.1	Processing system revision	ontime	46073.786278307	Sum of GTIs [s]
caldbver	4.6.4	 	ontime2	46073.622118294	Sum of GTIs [s]
date	2014-12-08T17:27:58	Date and time of file creation	ontime3	46073.704198301	Sum of GTIs [s]
revision	3	Processing version of data	ontime6	46073.745238304	Sum of GTIs [s]
			ontime7	46073.786278307	Sum of GTIs [s]
			ontime8	46073.663158298	Sum of GTIs [s]
			l1events	486894	Number of level 1 events

2.1.4 Events

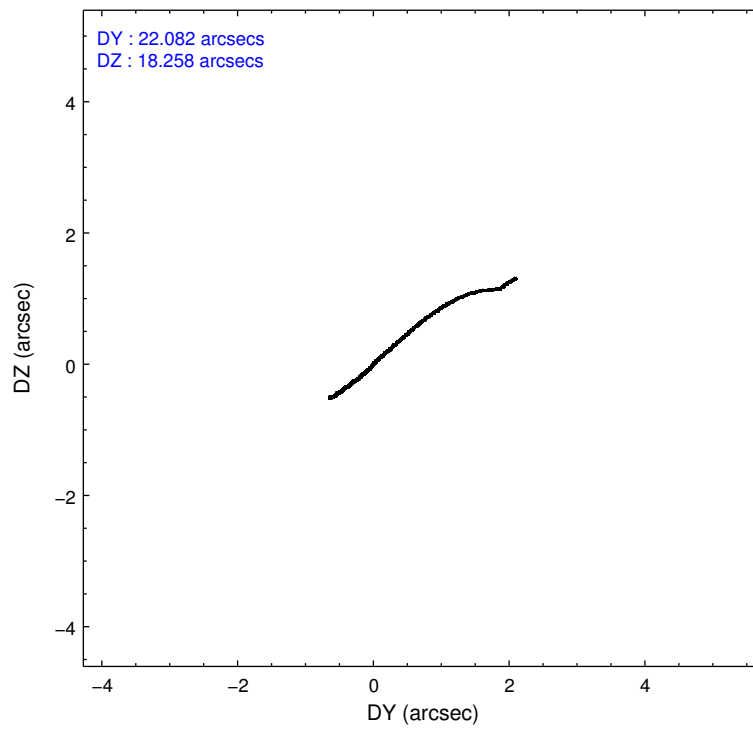
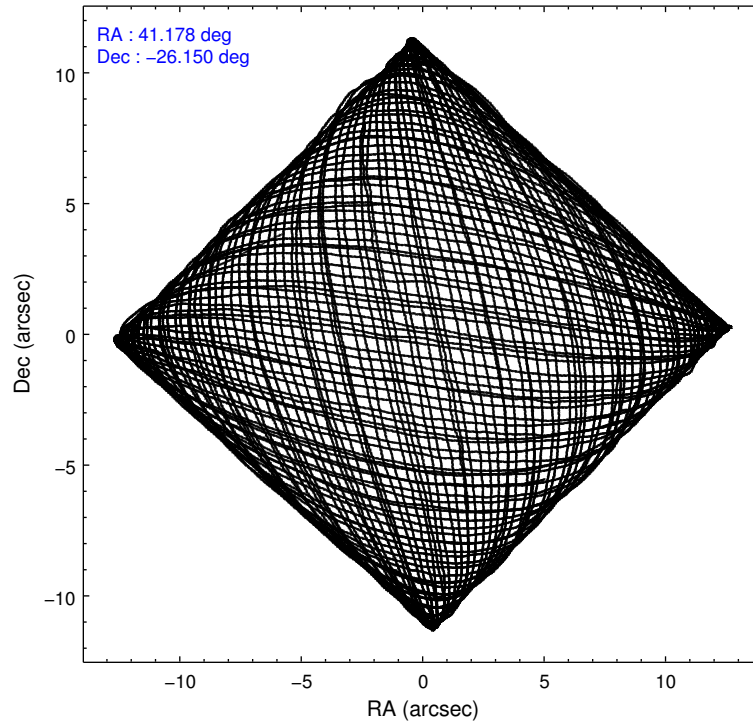
	ccd 2	ccd 3	ccd 6	ccd 7	ccd 8
level 1 events	76006	81095	85106	128128	116559
rejected events	65571	70536	73852	73724	89410
rejected %	86%	86%	86%	57%	76%

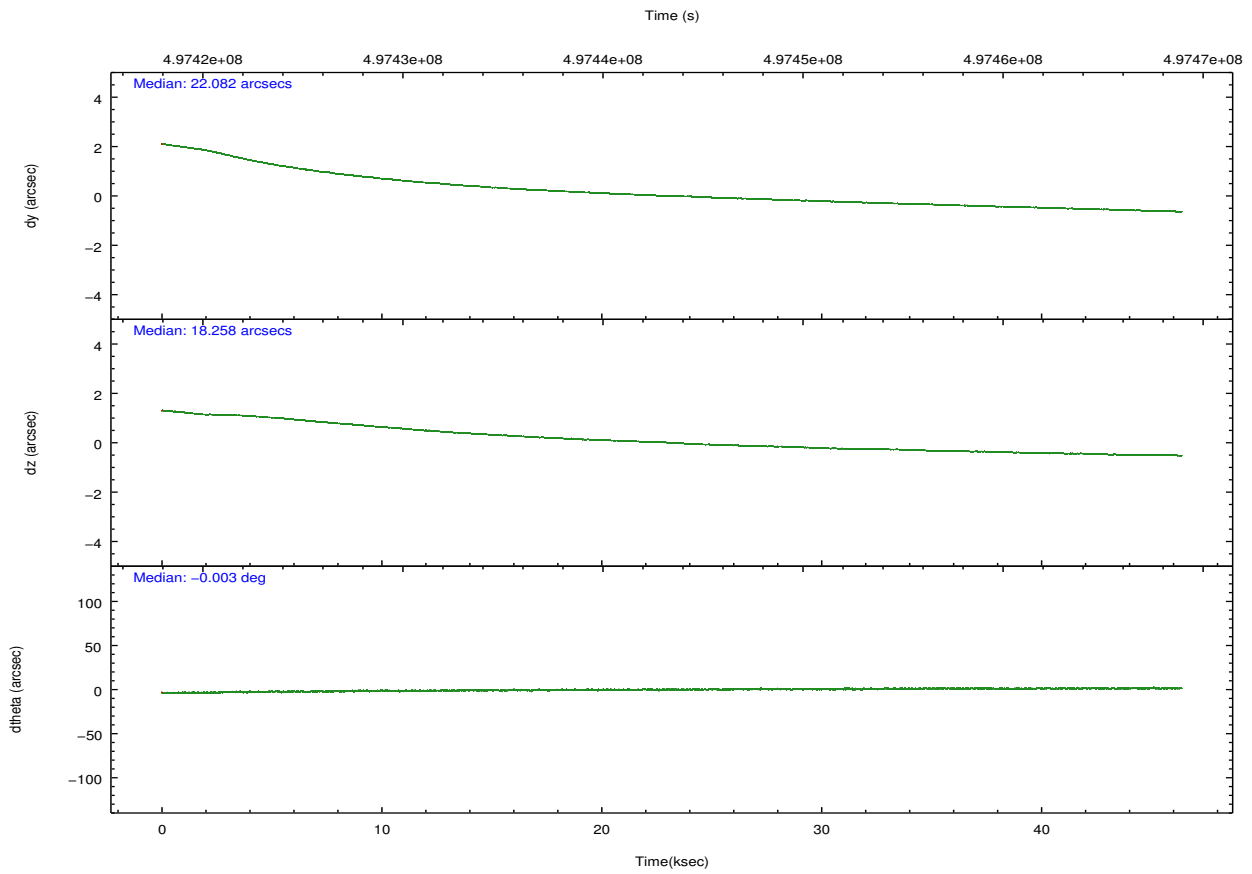
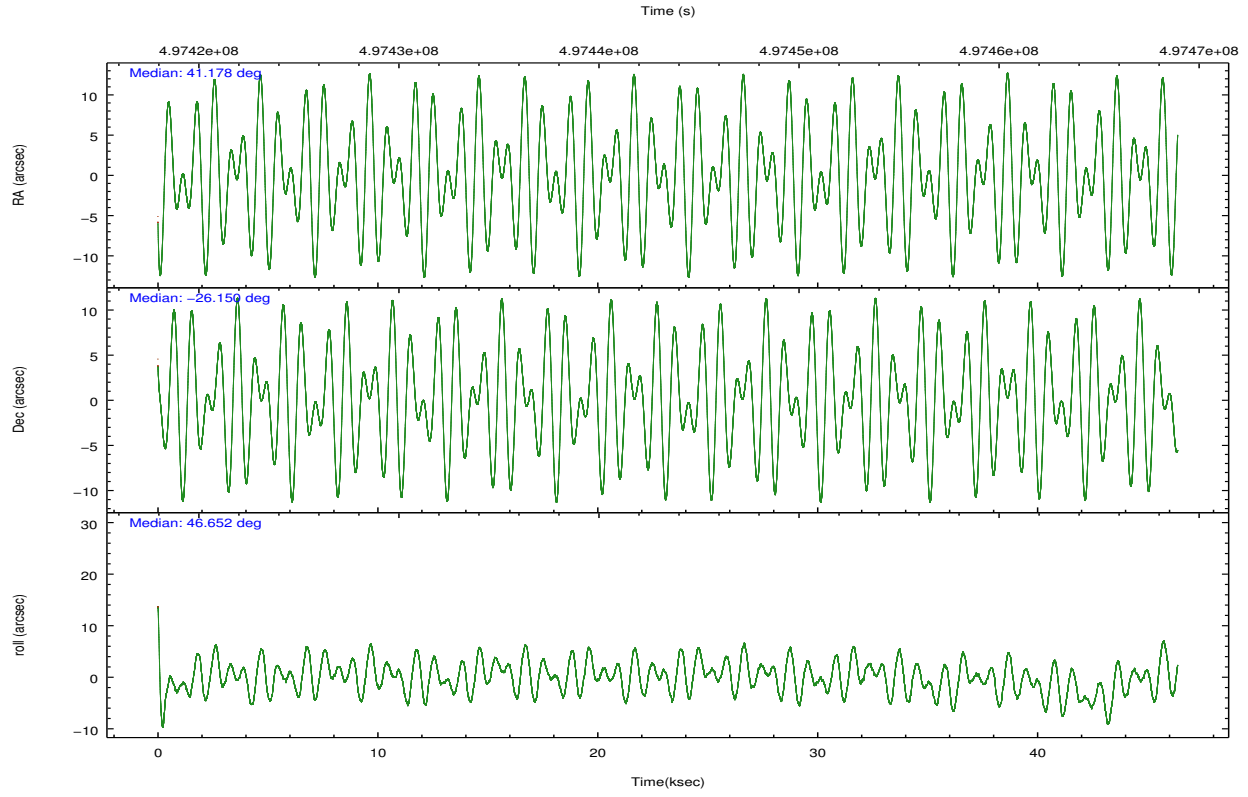
	ccd 2	ccd 3	ccd 6	ccd 7	ccd 8
grade 0 events	4103	4009	3927	5908	7730
	5%	4%	4%	4%	6%
grade 1 events	28	46	27	126	59
	0%	0%	0%	0%	0%
grade 2 events	2076	1983	2321	11379	6087
	2%	2%	2%	8%	5%
grade 3 events	1242	1308	1369	5511	2746
	1%	1%	1%	4%	2%
grade 4 events	1250	1320	1296	5298	2705
	1%	1%	1%	4%	2%
grade 5 events	3563	4363	4633	11652	5841
	4%	5%	5%	9%	5%
grade 6 events	1764	1939	2341	26311	7881
	2%	2%	2%	20%	6%
grade 7 events	61980	66127	69192	61943	83510
	81%	81%	81%	48%	71%

2.2 Compared Parameters

Parameter	Planned	Actual	Parameter	Planned	Actual
Instrument	ACIS	ACIS	Obspar format version number	7	7
Detector	ACIS-23678	ACIS-23678	Obspar file type	PREDICTED	ACTUAL
Grating	NONE	NONE	Obspar update status	NONE	UPDATED
Data mode	FAINT	FAINT	Number of optional ACIS chips dropped	0	0
Observation mode	POINTING	POINTING	On-chip summing requested	N	N
[deg] Pointing RA	41.171715	41.17832781973745	Subarray requested	CUSTOM	1/4
[deg] Pointing Dec	-26.176946	-26.15026470088351	Subarray start row	385	385
[deg] Pointing Roll	46.501497	46.66104499765148	Subarray row count	256	256
[mm] SIM focus pos	-0.684267	-0.6828225247311905	Alternating exposures requested	N	N
[mm] SIM defocus	0	0.001444936568705701	[s] Primary exposure time	0.000000	1
[mm] SIM translation stage pos	-190.132523	-190.1400660498719			
[mm] SIM translation stage offset	0	0.00754346686406393			
[s] Observation start time (MET)	497420626.184000	497419520.94535			
Observation start date	2013-10-06T04:22:39	2013-10-06T04:05:20			
[s] Observation end time (MET)	497466626.184000	497467726.18548			
Observation end date	2013-10-06T17:09:19	2013-10-06T17:28:46			
Read mode	TIMED	TIMED			

2.3 Aspect





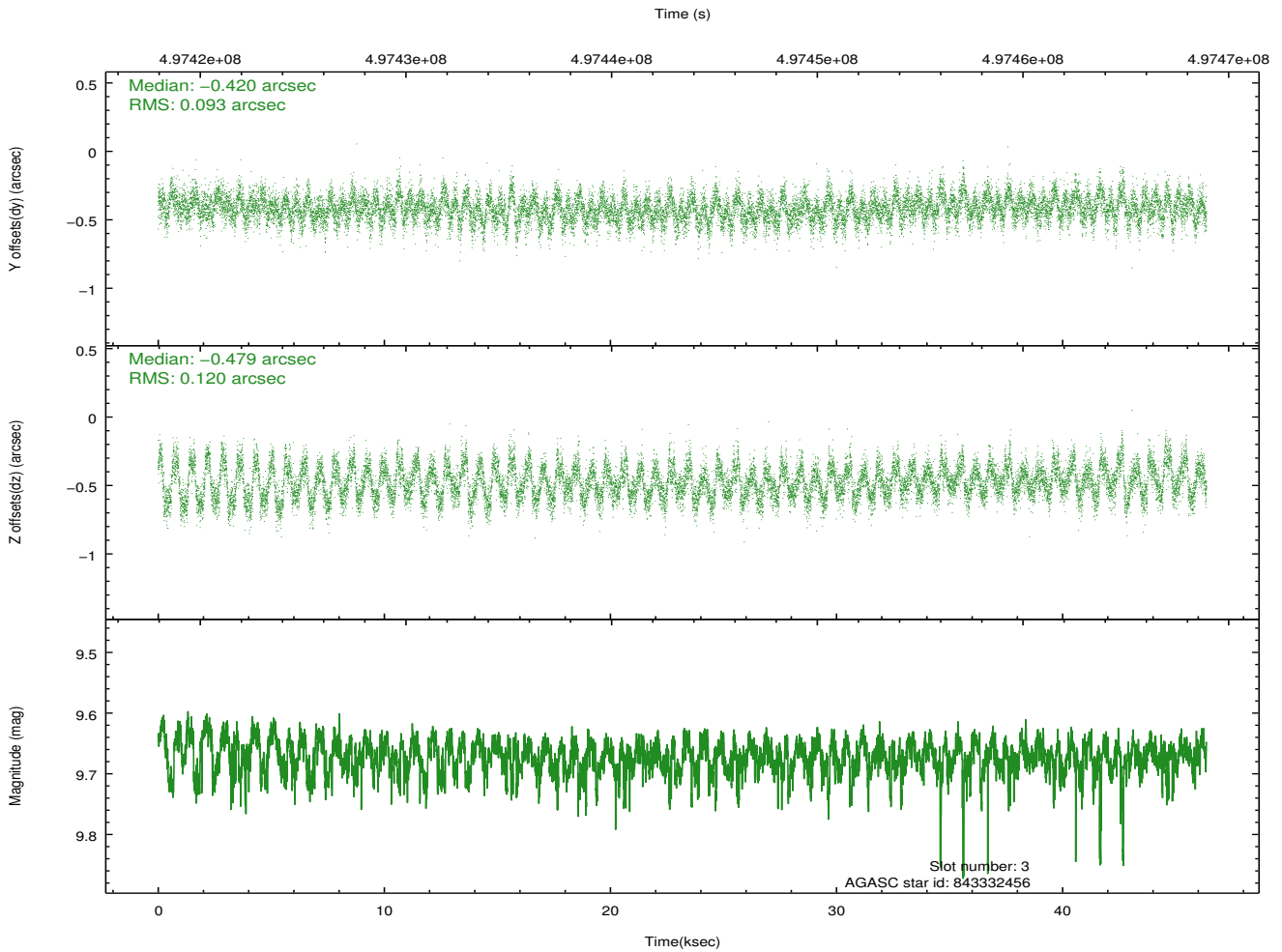
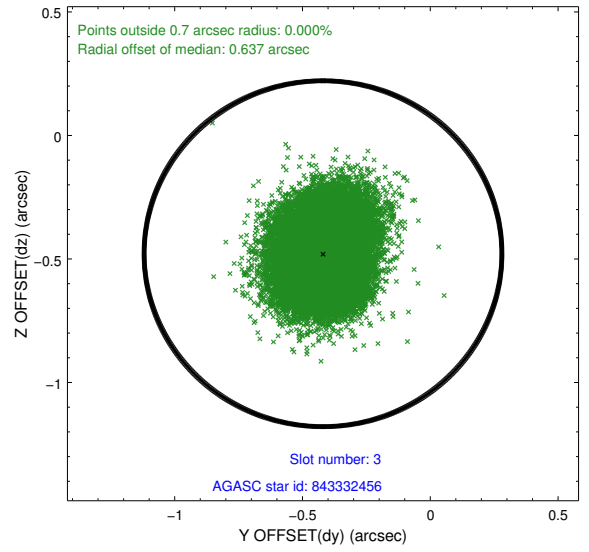
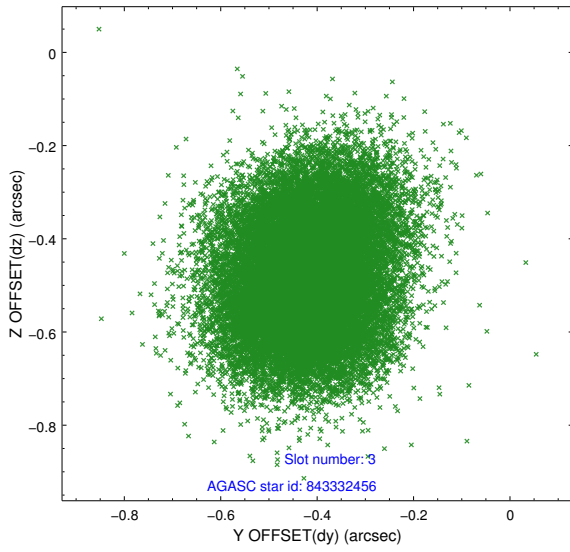
Slot Statistics

slot	status	used	id	mag	n_pts	med_dy	med_dz	dr1	dr2	ra	dec	mean_y	mean_z
0	FID		ACIS-S-2	7.02	11311	-0.110	-0.070	0.012	0.069	0.000000	0.000000	-775.59	-1739.93
1	FID		ACIS-S-4	7.11	11311	0.270	0.072	0.025	0.105	0.000000	0.000000	2138.11	168.68
2	FID		ACIS-S-5	7.14	11311	-0.195	0.007	0.020	0.058	0.000000	0.000000	-1828.51	162.30
3	GUIDE	used	843332456	9.67	22584	-0.420	-0.479	0.162	0.255	41.230586	-25.346930	2299.00	1917.96
4	GUIDE	used	843332848	8.59	22598	0.189	0.457	0.076	0.126	41.563373	-26.171086	885.73	-903.87
5	GUIDE	used	843333904	8.82	22573	0.055	-0.361	0.094	0.152	40.602657	-25.890844	-524.30	2042.77
6	GUIDE	used	843583592	9.43	22575	0.177	0.403	0.171	0.283	41.139749	-26.746403	-1557.17	-1336.22
7	OMITTED			0.00	0	0.000	0.000	0.000	0.000	0.000000	0.000000	0.00	0.00

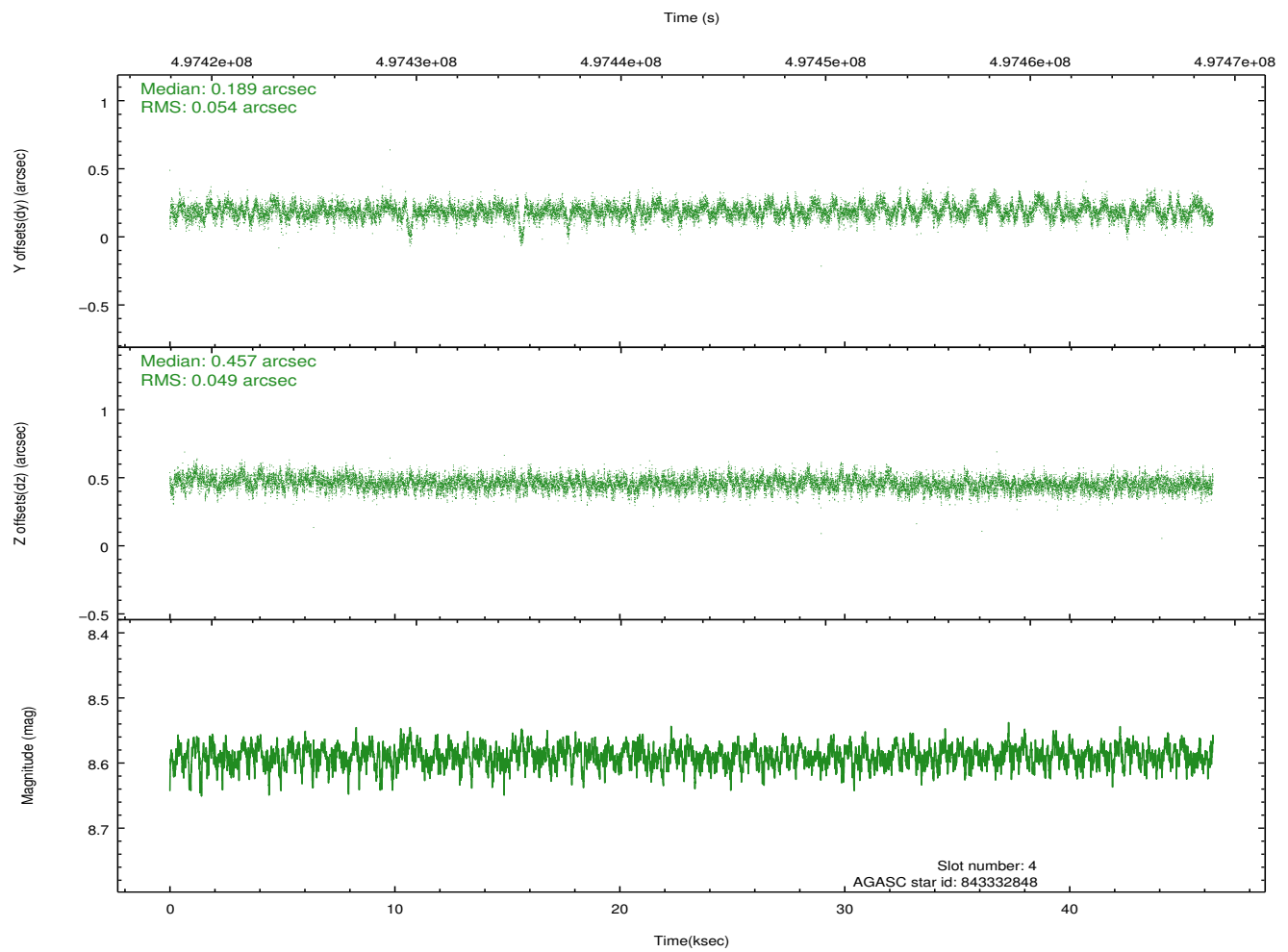
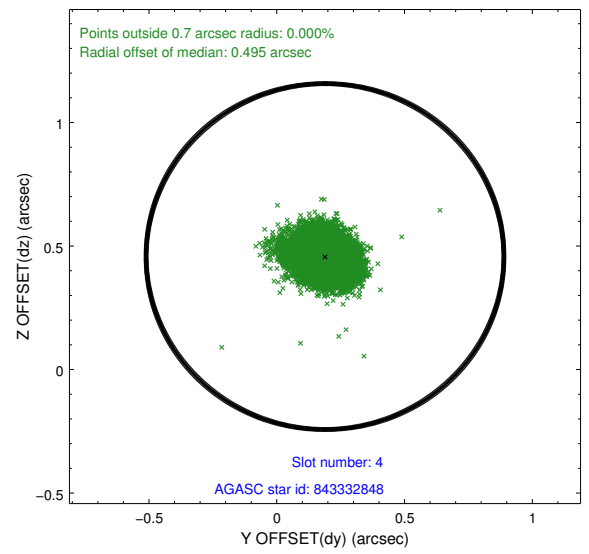
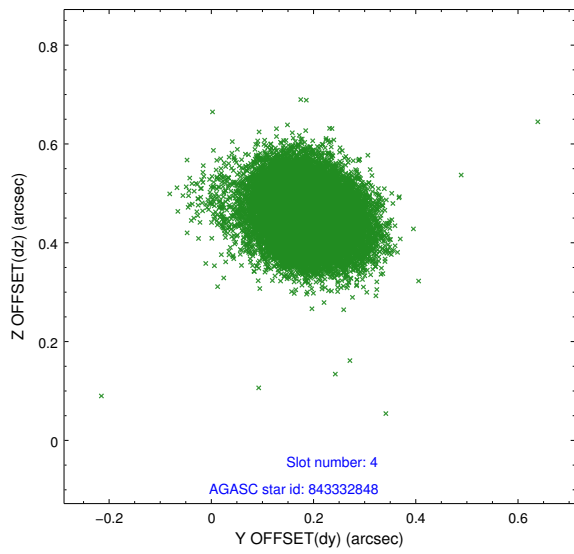
∞

2.4 Star Slots

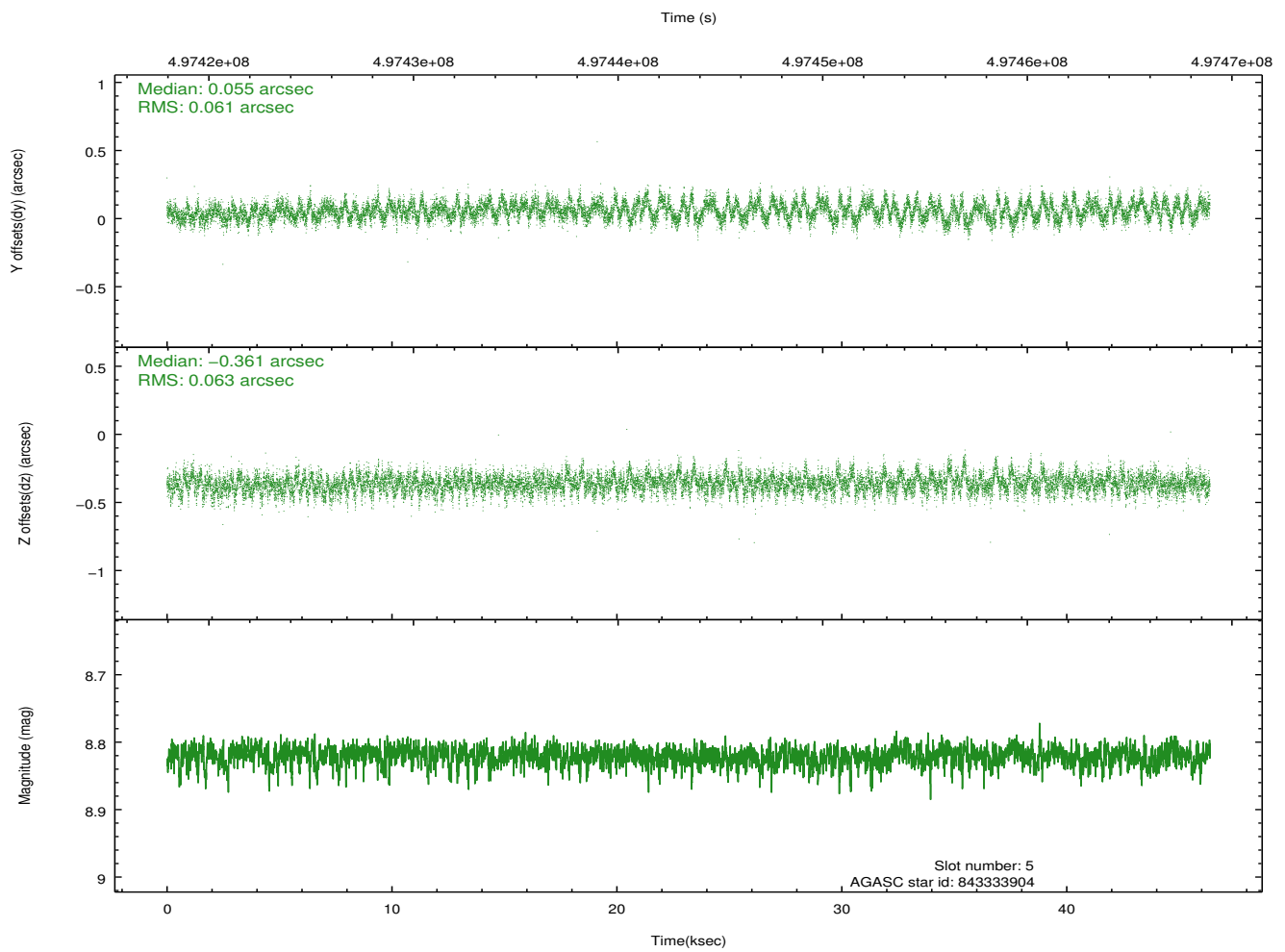
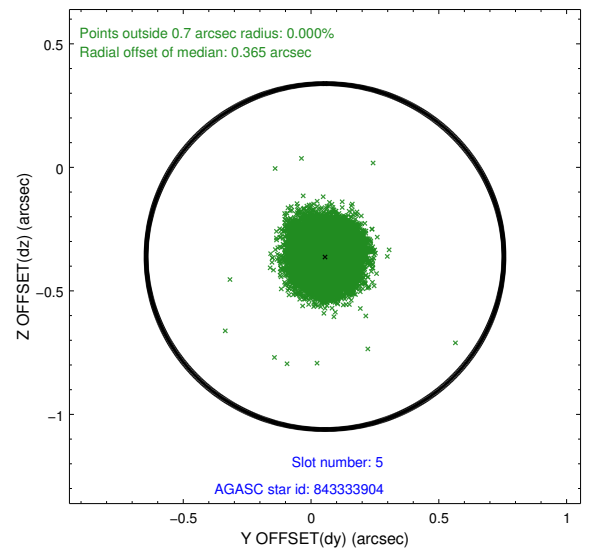
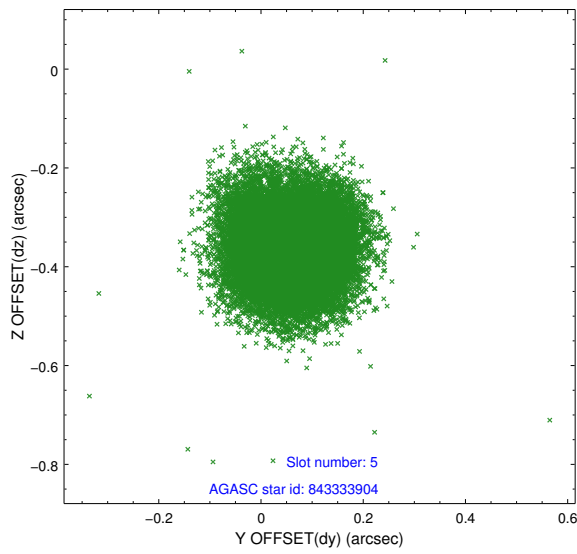
2.4.1 Slot 3



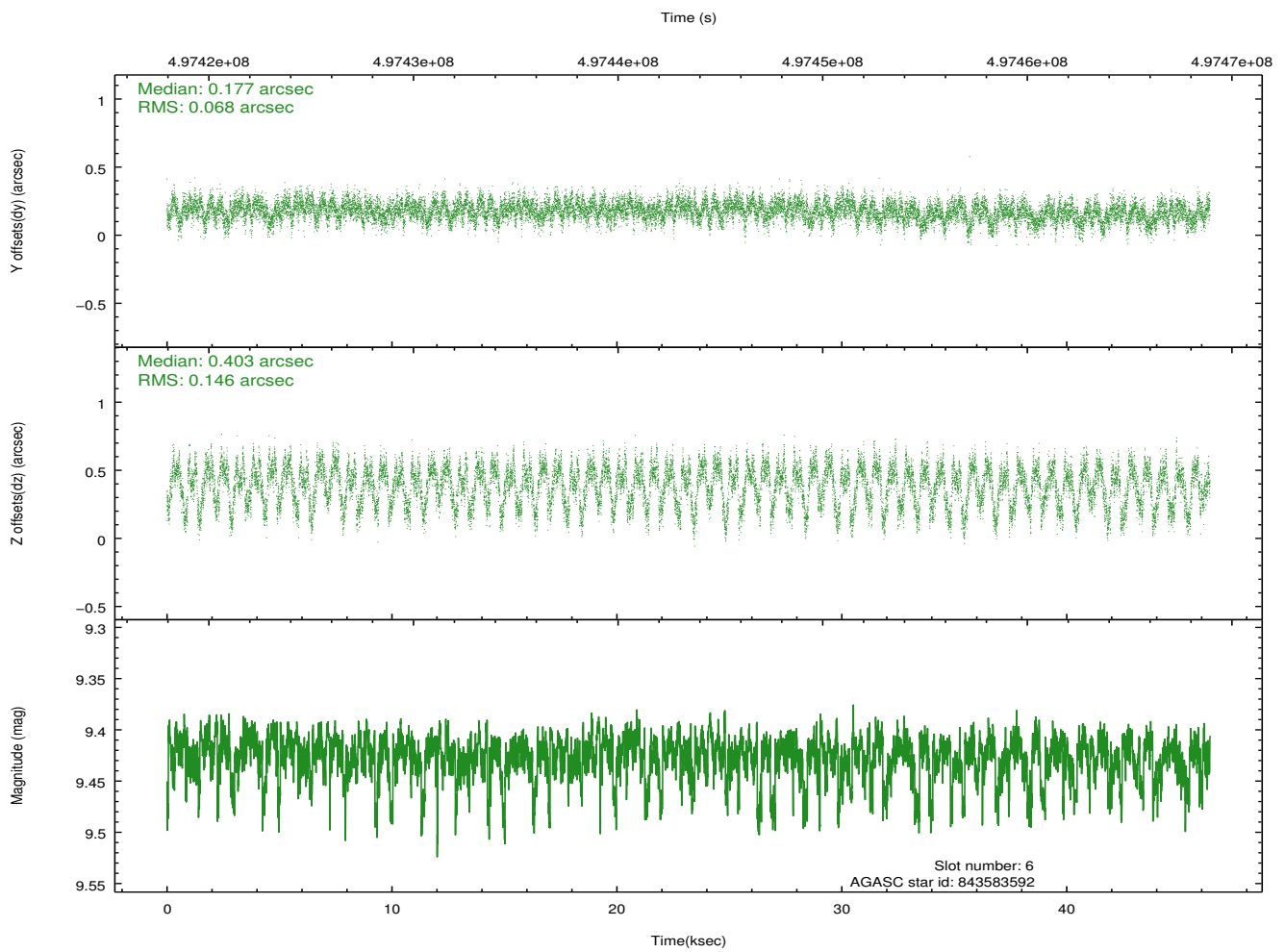
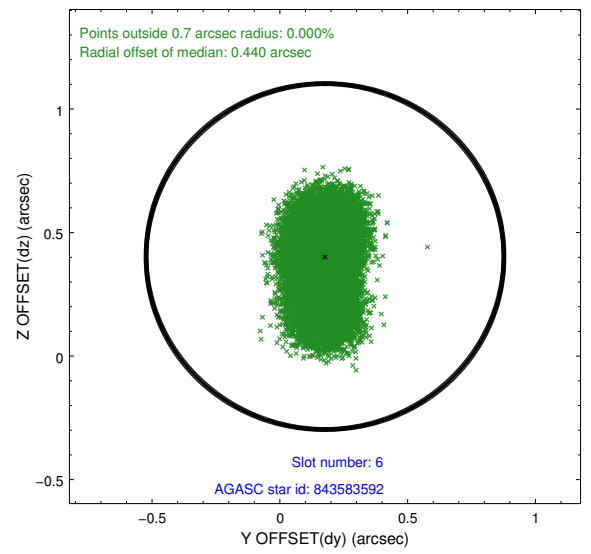
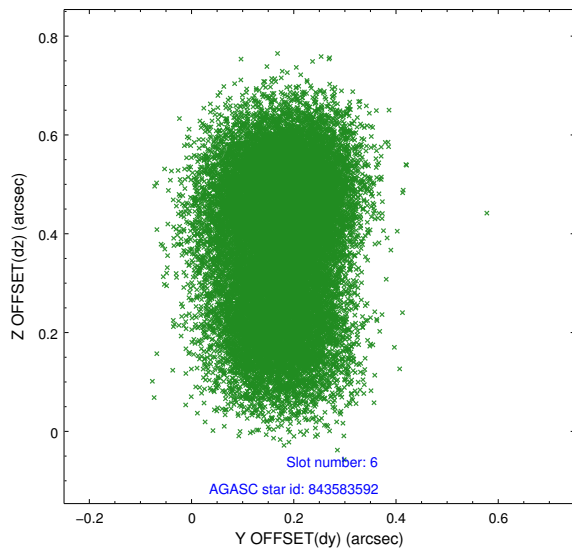
2.4.2 Slot 4



2.4.3 Slot 5

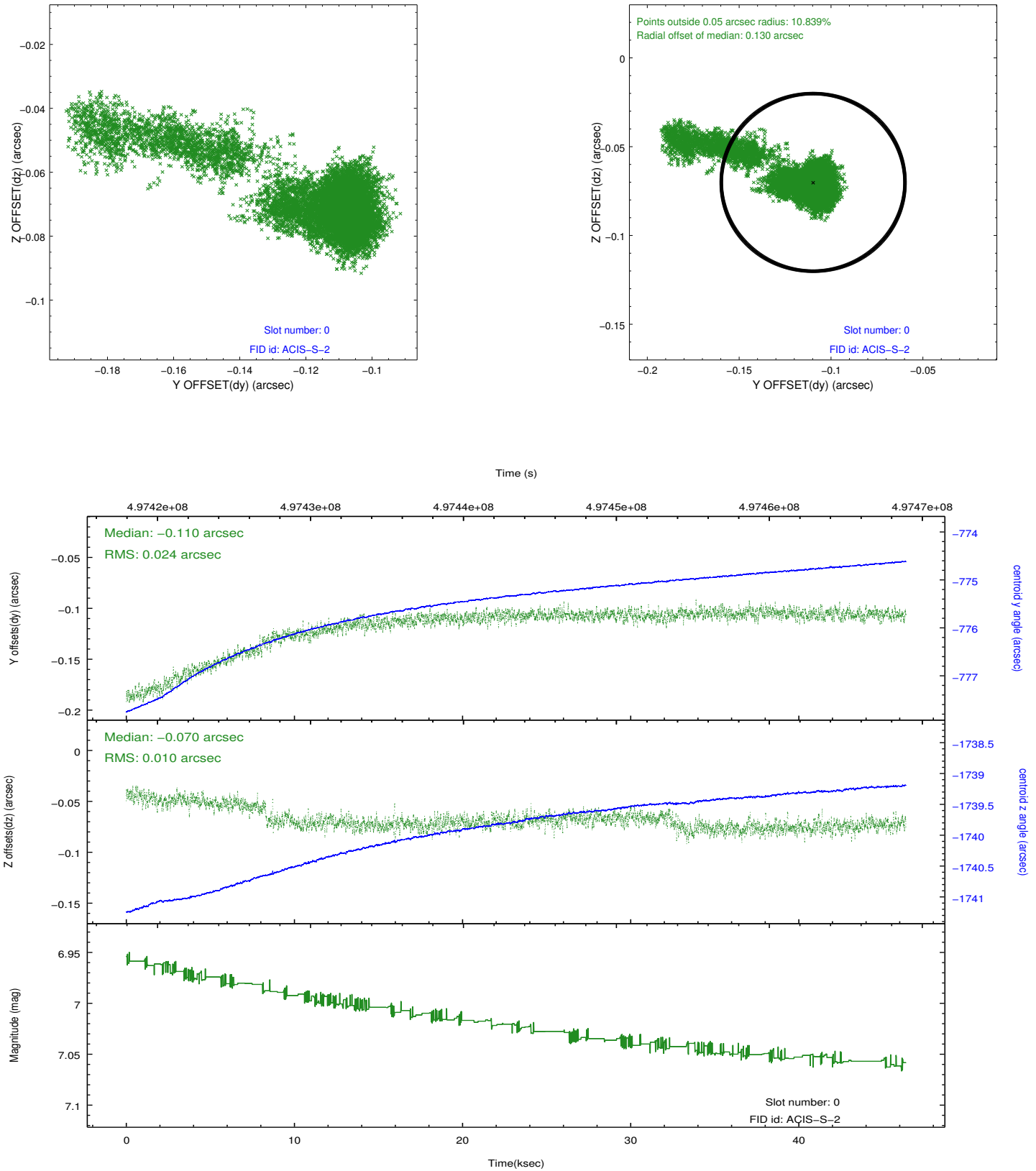


2.4.4 Slot 6

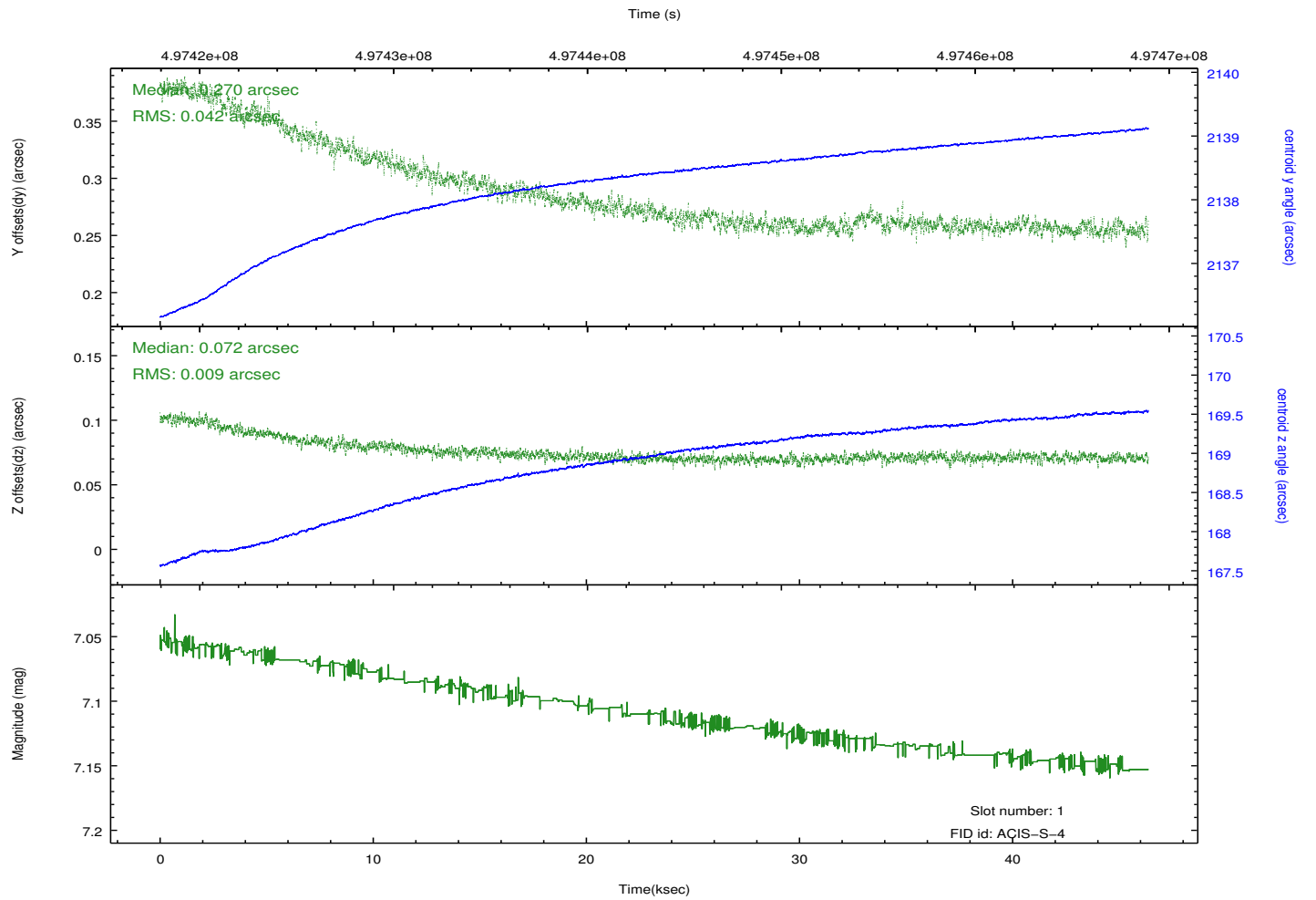
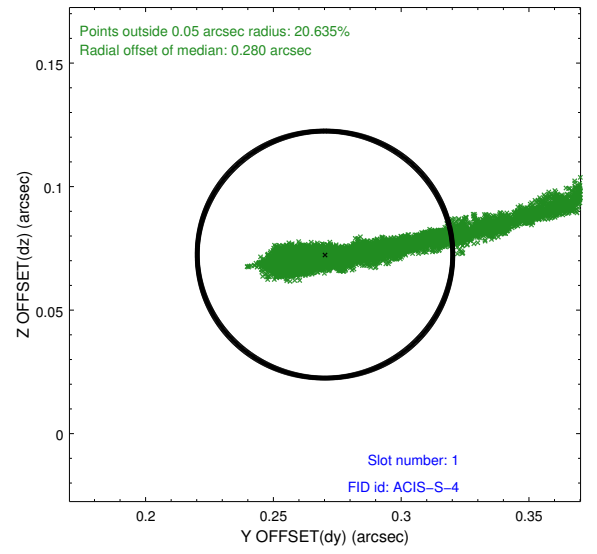
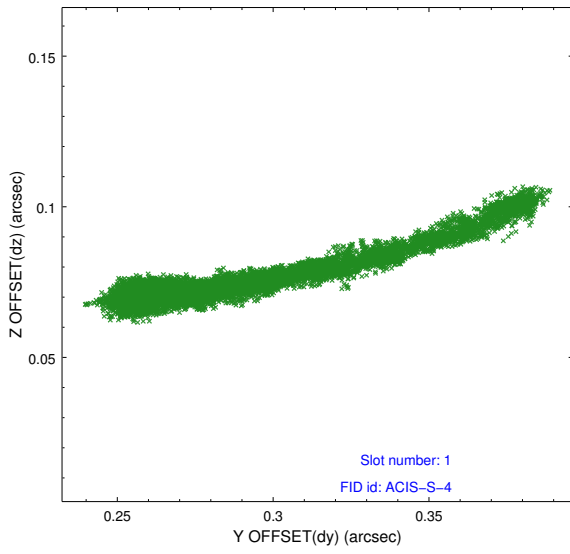


2.5 FID Slots

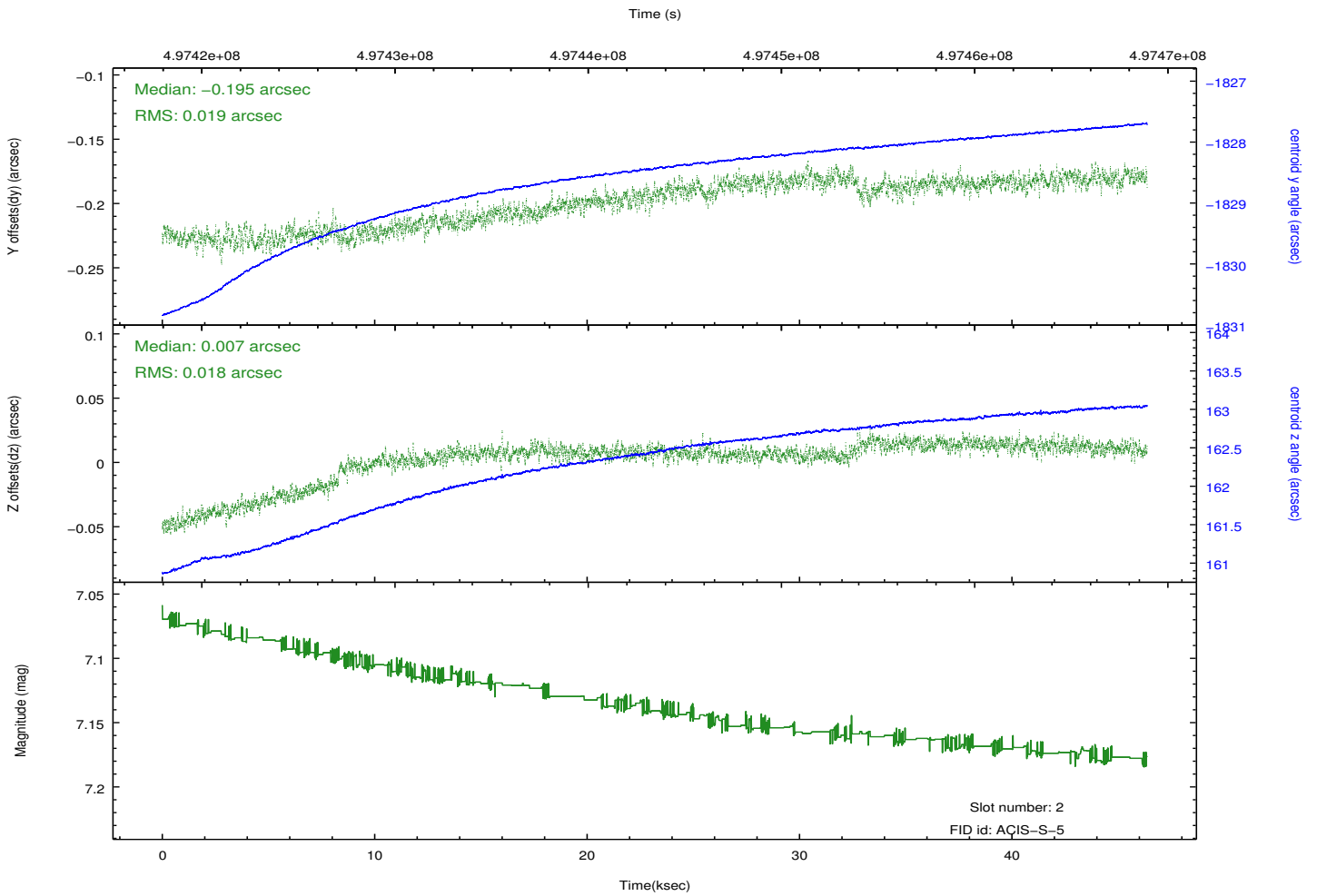
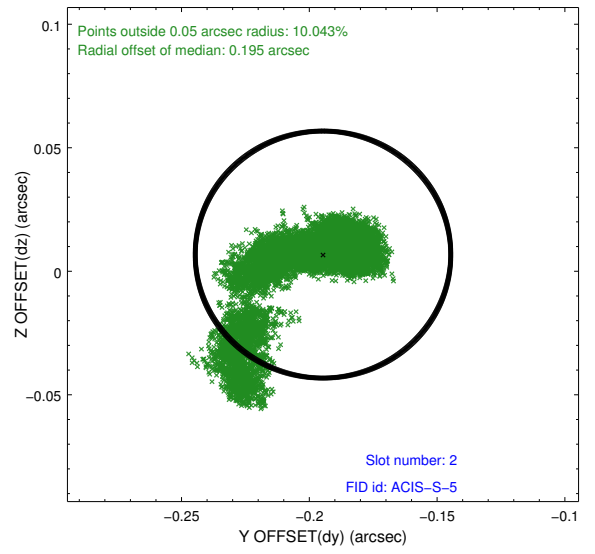
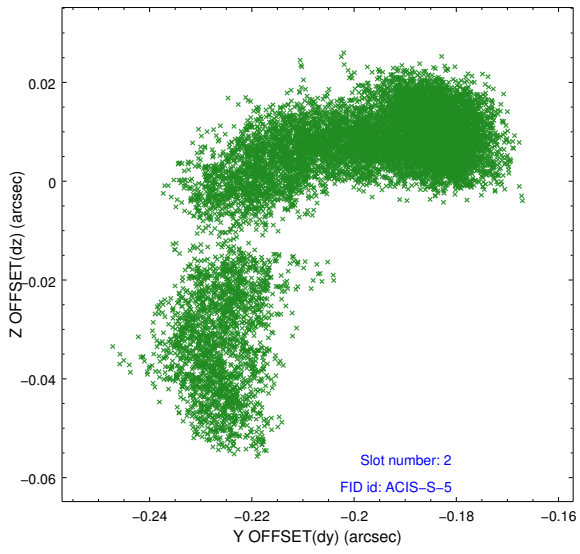
2.5.1 Slot 0



2.5.2 Slot 1



2.5.3 Slot 2



A Summary

A.1 Status

V&V Scientist	Jen Lauer
V&V Date (YYYY-MM-DD)	2014.12.31
V&V Edition	1
V&V Disposition and Status	OK
V&V Charge Time	46.073786278307

A.2 Comments

The guide star in slot 7 was removed from the aspect solution due to poor data quality. The aspect solution is improved by the removal of this star from the solution.

=====

These data have been reprocessed with new aspect alignment calibration files that correct small mean offsets (up to 0.4 arcsecs) and improve overall astrometric accuracy. The new calibration was determined using data from the time period being reprocessed and was performed using cross-correlation of X-ray sources with radio and optical counterparts.