

V&V Reference Report

L2 ASCDS Version : 10.3.3

Observation 17658 - L2 Version 1
Chandra X-Ray Center

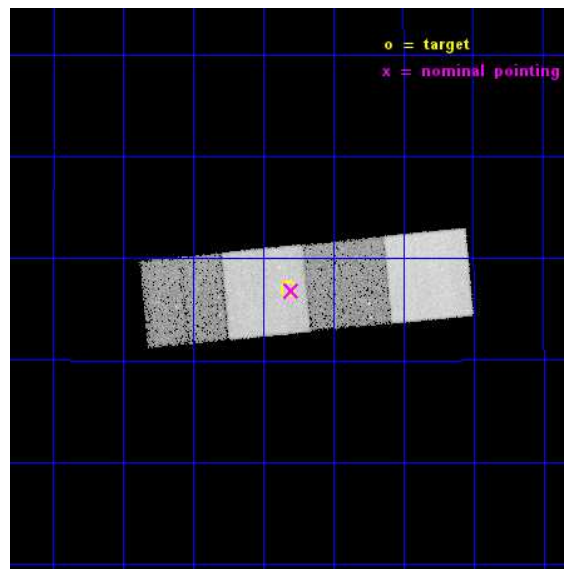
L2 Processing Date : May 2 2015

Contents

1	Front	2
2	OBI	3
2.1	OBI	3
2.1.1	Images	3
2.1.2	Bias	3
2.1.3	Parameters	4
2.1.4	Events	4
2.2	Compared Parameters	5
2.3	Aspect	6
2.4	Star Slots	9
2.4.1	Slot 3	9
2.4.2	Slot 4	10
2.4.3	Slot 5	11
2.4.4	Slot 6	12
2.4.5	Slot 7	13
2.5	FID Slots	14
2.5.1	Slot 0	14
2.5.2	Slot 1	15
2.5.3	Slot 2	16
A	Summary	17
A.1	Status	17
A.2	Comments	17

1 Front

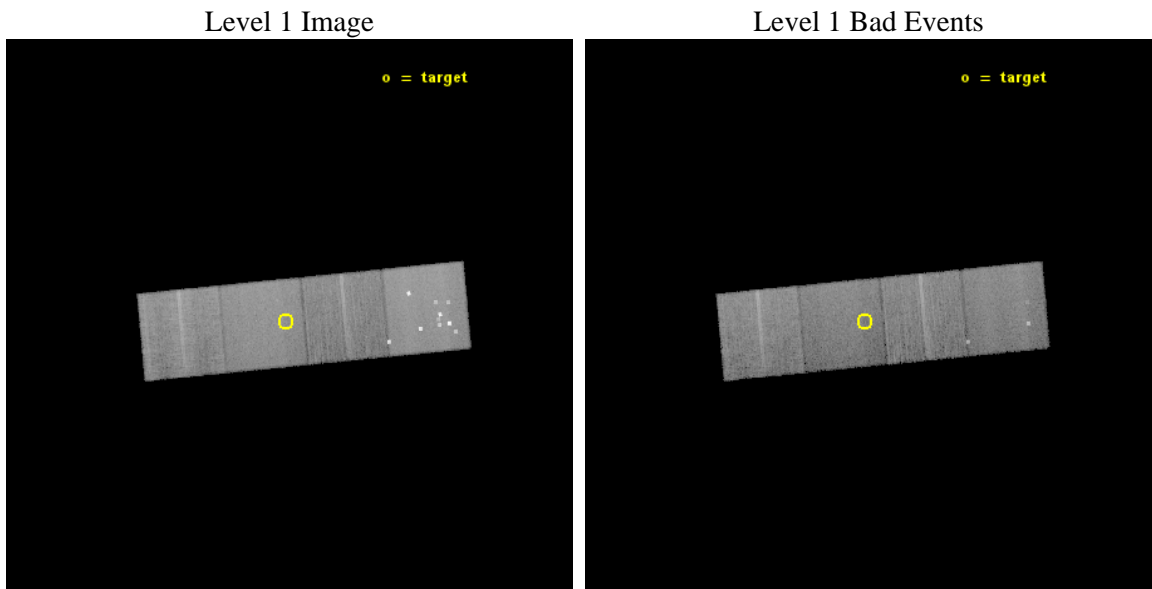
seq_num	502491	Sequence number
obs_id	17658	Observation id
title	Search for a Jet Break in the Short GRB 150423A	Proposal title
observer	Prof. Edo Berger	Principal investigator
object	GRB150423A	Source name
dtycycle	0	
cycle	P	events from which exps? Prim/Second/Both
ra_targ	221.579167	Observer's specified target RA [deg]
dec_targ	12.283611	Observer's specified target Dec [deg]
ra_nom	221.57453153368	Nominal RA [deg]
dec_nom	12.280597126719	Nominal Dec [deg]
roll_nom	174.58730725246	Nominal Roll [deg]
revision	1	Processing version of data
ontime	23643.700181961	Sum of GTIs [s]
livetime	23334.777832845	Livetime [s]
ontime5	23643.700181961	Sum of GTIs [s]
ontime6	23643.700181961	Sum of GTIs [s]
ontime7	23643.700181961	Sum of GTIs [s]
ontime8	23643.700181961	Sum of GTIs [s]
l2events	174444	Number of level 2 events



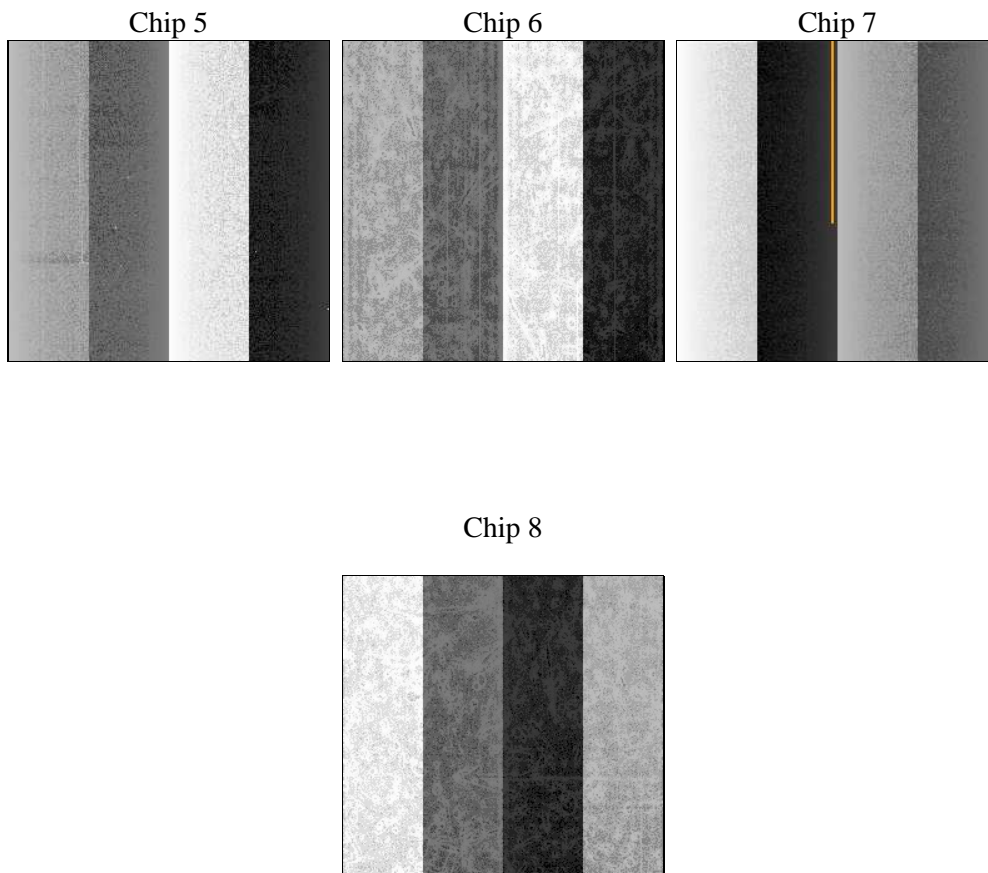
2 OBI

2.1 OBI

2.1.1 Images



2.1.2 Bias



2.1.3 Parameters

obi_num	0	Obi number	sched_exp_time	23580.291000	[s] Scheduled observation exposure time
ascdsver	10.3.3	Processing system revision	ontime	23643.700181961	Sum of GTIs [s]
caldbver	4.6.7	 	ontime5	23643.700181961	Sum of GTIs [s]
date	2015-05-03T02:51:05	Date and time of file creation	ontime6	23643.700181961	Sum of GTIs [s]
revision	1	Processing version of data	ontime7	23643.700181961	Sum of GTIs [s]
			ontime8	23643.700181961	Sum of GTIs [s]
			l1events	661496	Number of level 1 events

2.1.4 Events

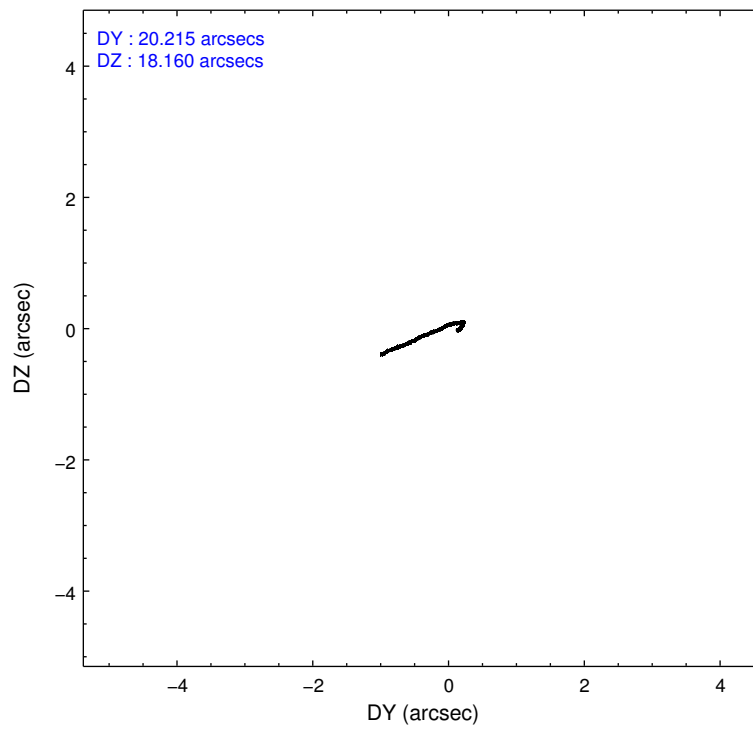
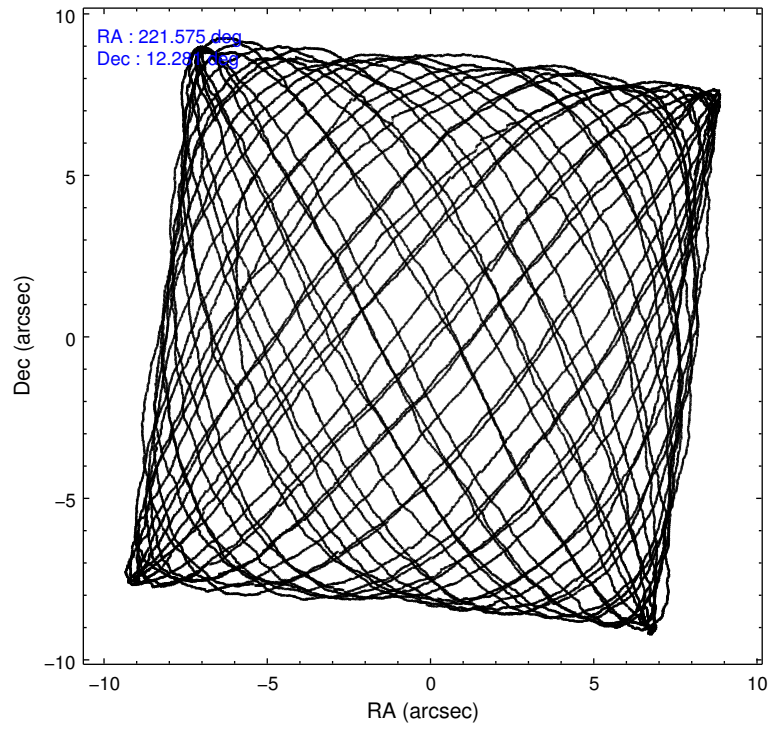
	ccd 5	ccd 6	ccd 7	ccd 8
level 1 events	232165	118198	156053	155080
rejected events	103088	104128	89725	116707
rejected %	44%	88%	57%	75%

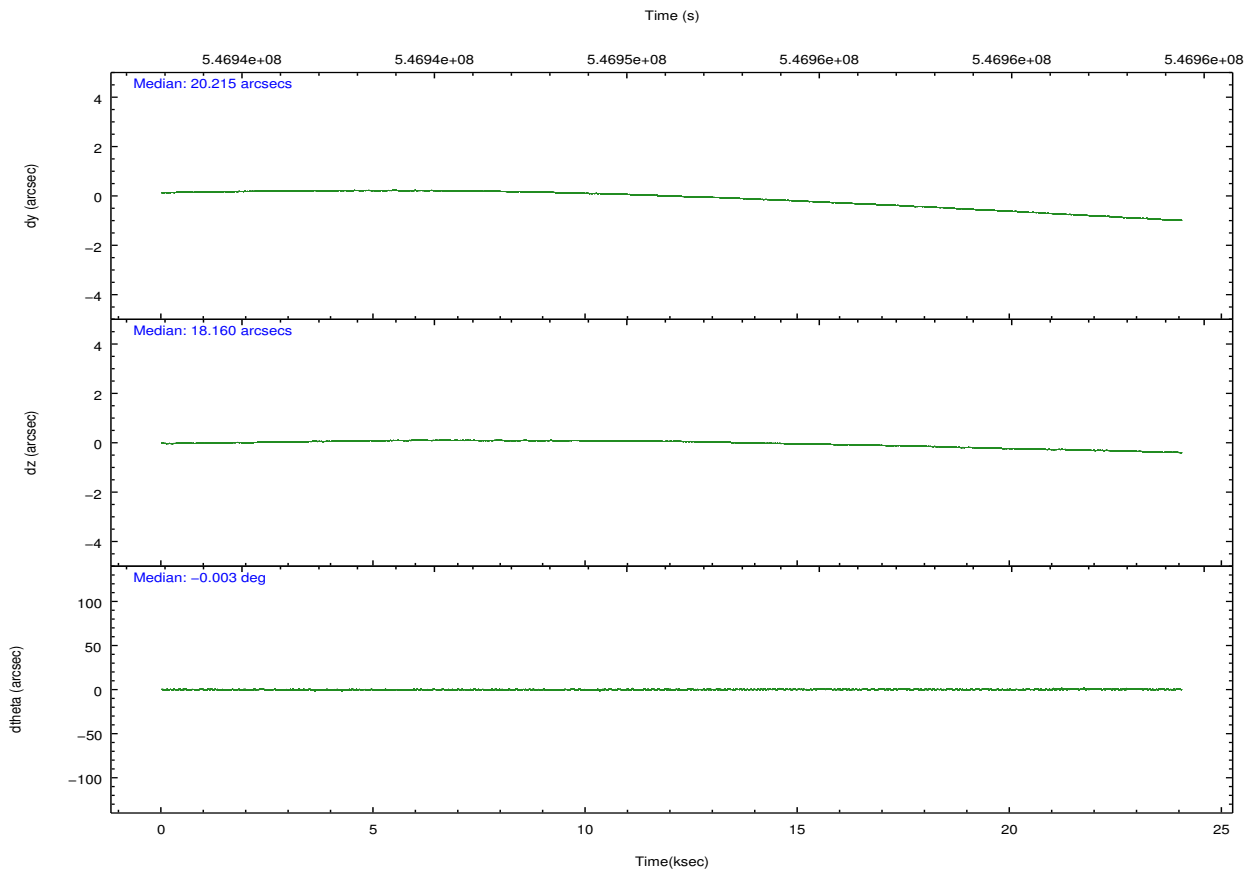
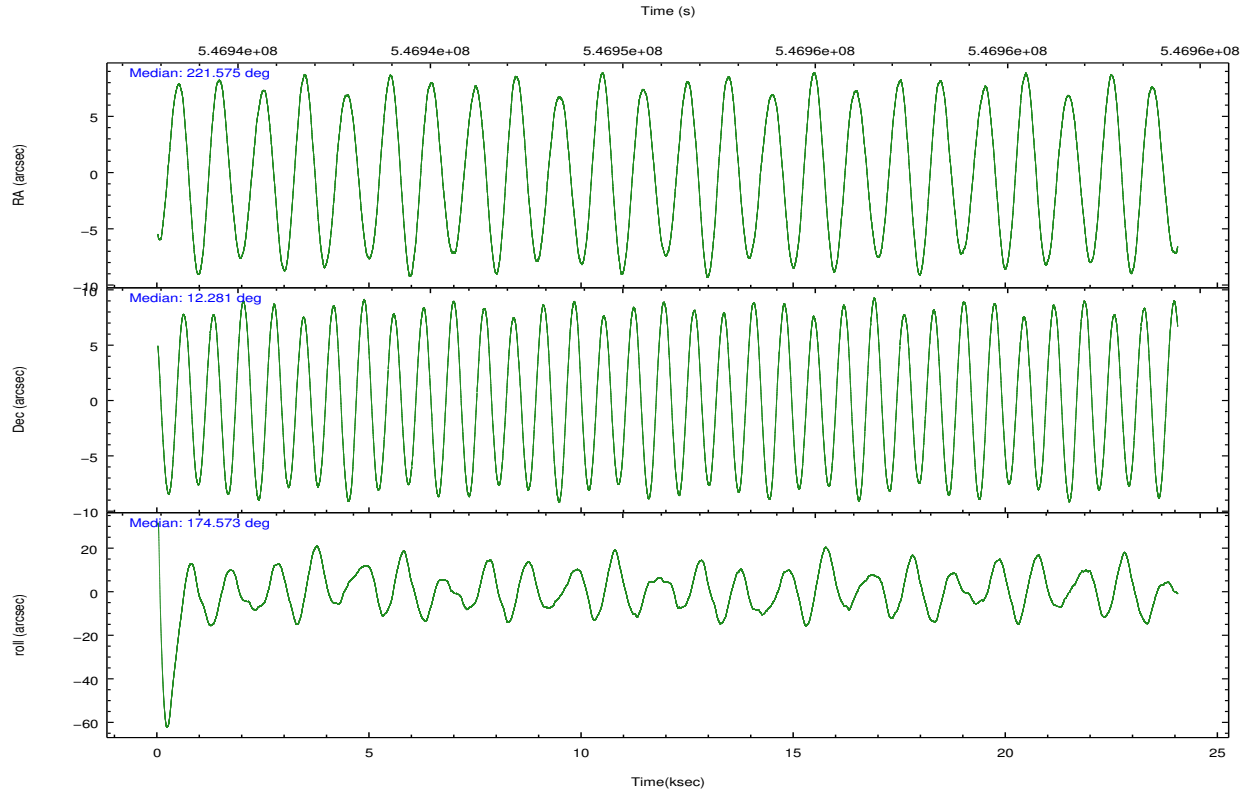
	ccd 5	ccd 6	ccd 7	ccd 8
grade 0 events	35078	4705	5587	10296
	15%	3%	3%	6%
grade 1 events	968	62	165	106
	0%	0%	0%	0%
grade 2 events	34447	3195	13834	9602
	14%	2%	8%	6%
grade 3 events	4332	1294	5027	3882
	1%	1%	3%	2%
grade 4 events	3995	1357	4918	3674
	1%	1%	3%	2%
grade 5 events	12969	5487	14740	8861
	5%	4%	9%	5%
grade 6 events	51251	3520	36977	10920
	22%	2%	23%	7%
grade 7 events	89125	98578	74805	107739
	38%	83%	47%	69%

2.2 Compared Parameters

Parameter	Planned	Actual	Parameter	Planned	Actual
Instrument	ACIS	ACIS	Obspar format version number	7	7
Detector	ACIS-5678	ACIS-5678	Obspar file type	PREDICTED	ACTUAL
Grating	NONE	NONE	Obspar update status	NONE	UPDATED
Data mode	VFAINT	VFAINT	Number of optional ACIS chips dropped	0	0
Observation mode	POINTING	POINTING	On-chip summing requested	N	N
[deg] Pointing RA	221.599914	221.5745315336843	Subarray requested	NONE	NONE
[deg] Pointing Dec	12.292344	12.28059712671916	Alternating exposures requested	N	N
[deg] Pointing Roll	174.425274	174.587307252459	[s] Primary exposure time	0.000000	3.1
[mm] SIM focus pos	-0.684267	-0.6828225247311905			
[mm] SIM defocus	0	0.001444936568705701			
[mm] SIM translation stage pos	-190.132523	-190.1425803651734			
[mm] SIM translation stage offset	0	0.01005778216563158			
[s] Observation start time (MET)	546939620.184000	546938603.62562			
Observation start date	2015-05-02T07:39:13	2015-05-02T07:23:23			
[s] Observation end time (MET)	546963200.184000	546963426.0520101			
Observation end date	2015-05-02T14:12:13	2015-05-02T14:17:06			
Read mode	TIMED	TIMED			

2.3 Aspect





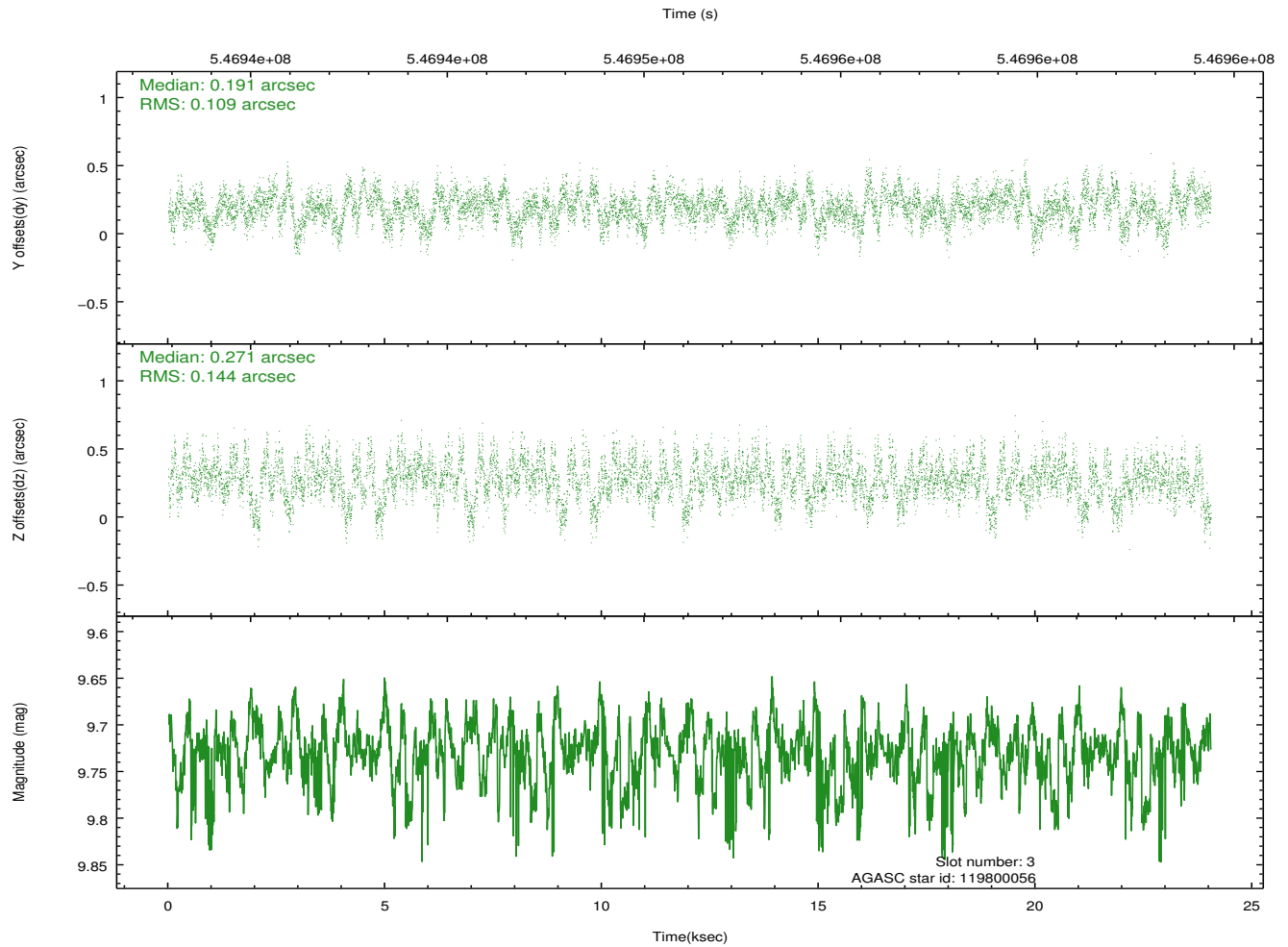
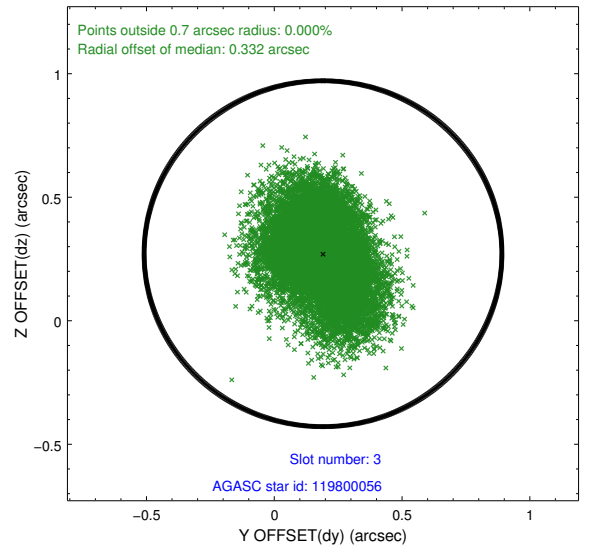
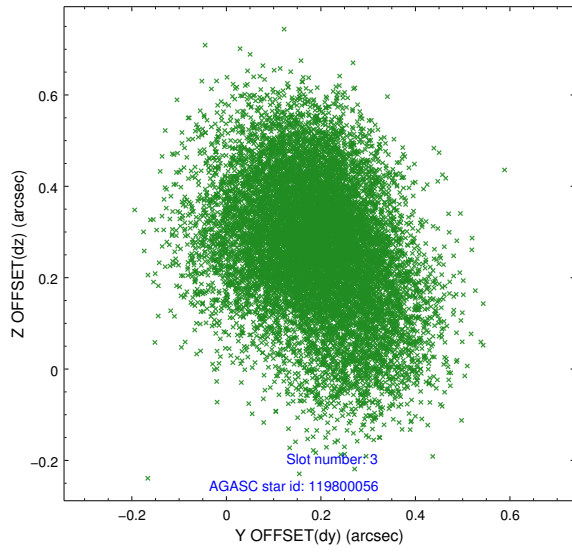
Slot Statistics

slot	status	used	id	mag	n_pts	med_dy	med_dz	dr1	dr2	ra	dec	mean_y	mean_z
0	FID		ACIS-S-2	7.11	5864	-0.156	-0.117	0.008	0.014	0.000000	0.000000	-773.35	-1739.63
1	FID		ACIS-S-4	7.20	5864	0.387	0.106	0.011	0.018	0.000000	0.000000	2140.44	168.90
2	FID		ACIS-S-5	7.22	5864	-0.261	0.019	0.011	0.027	0.000000	0.000000	-1826.11	162.69
3	GUIDE	used	119800056	9.73	11401	0.191	0.271	0.194	0.318	221.705448	12.373434	-340.84	-325.89
4	GUIDE	used	119800960	9.70	11712	-0.036	0.000	0.203	0.349	221.641752	11.802917	-317.29	1738.04
5	GUIDE	used	119802920	8.74	11719	-0.228	-0.242	0.166	0.251	221.439875	11.939791	437.56	1317.39
6	GUIDE	used	120199864	9.70	11721	-0.131	-0.123	0.159	0.262	221.007301	12.728077	2224.39	-1360.73
7	GUIDE	used	120200528	9.86	11620	0.188	0.123	0.297	0.438	221.514471	12.662059	428.64	-1295.43

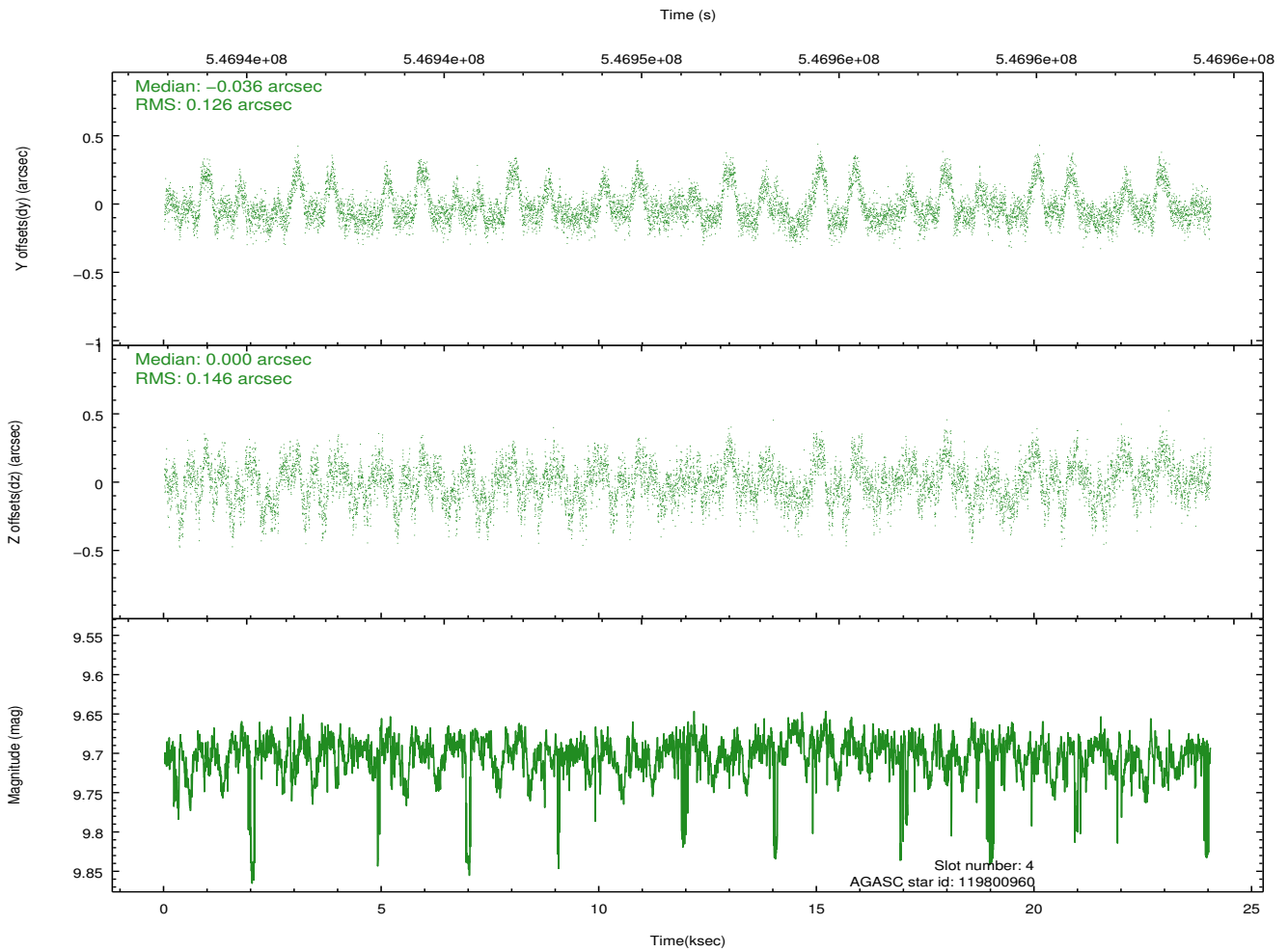
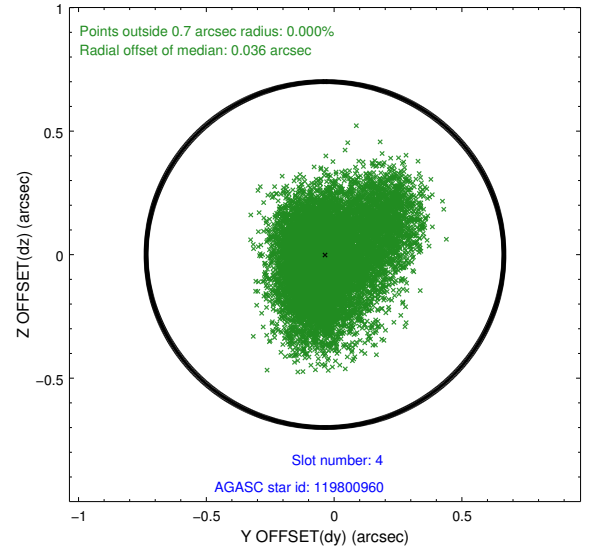
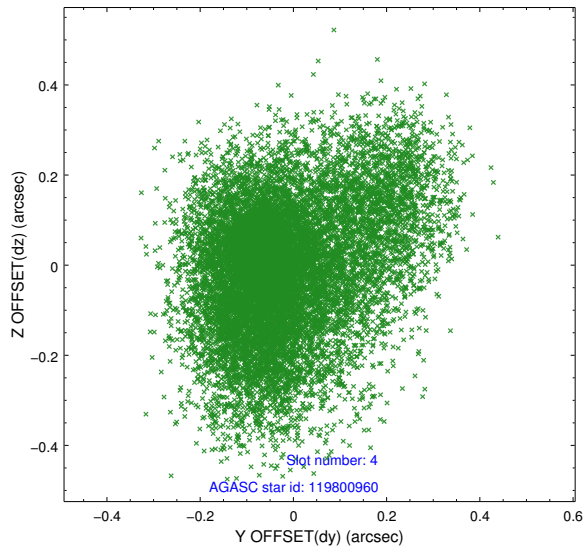
∞

2.4 Star Slots

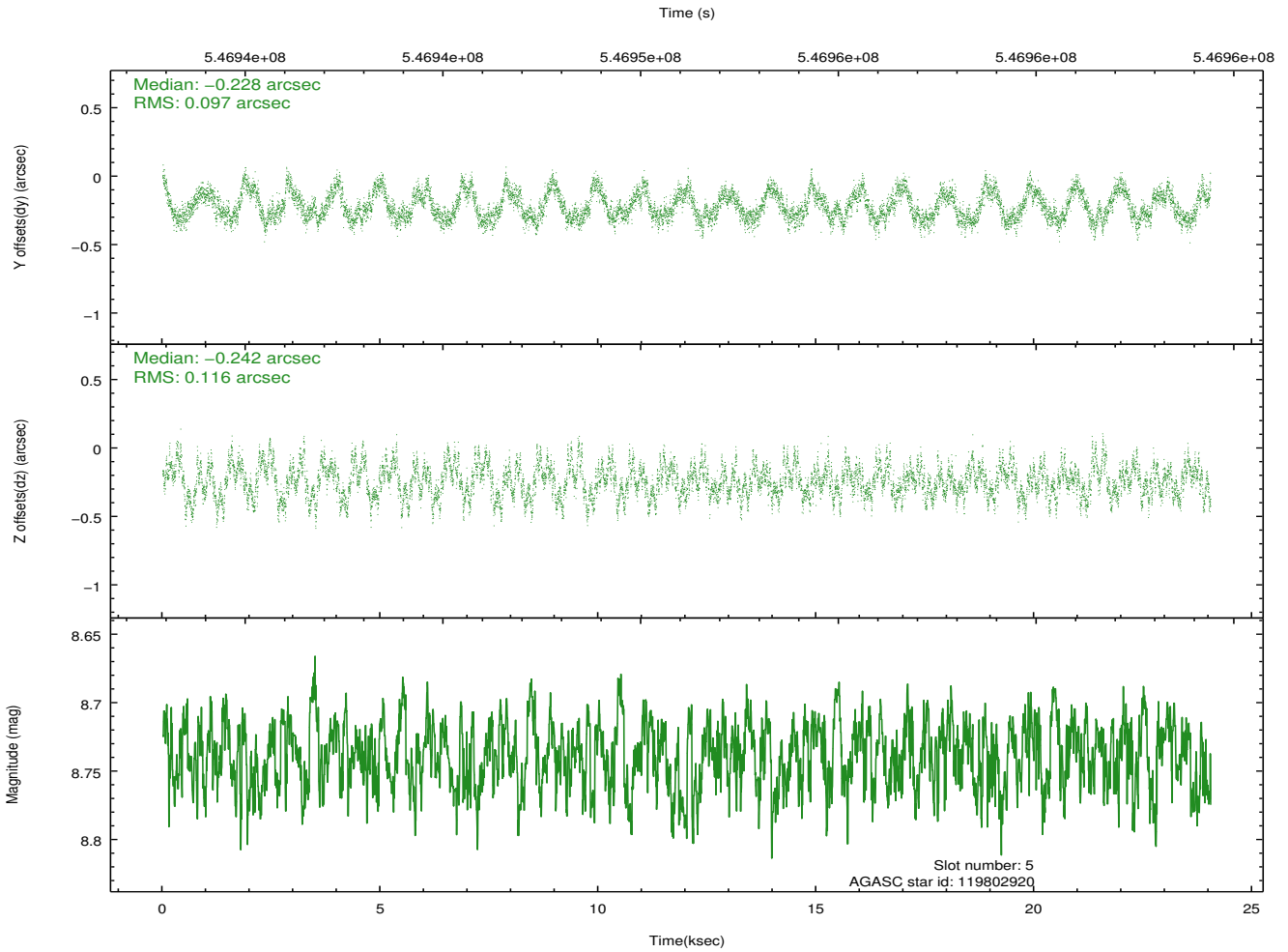
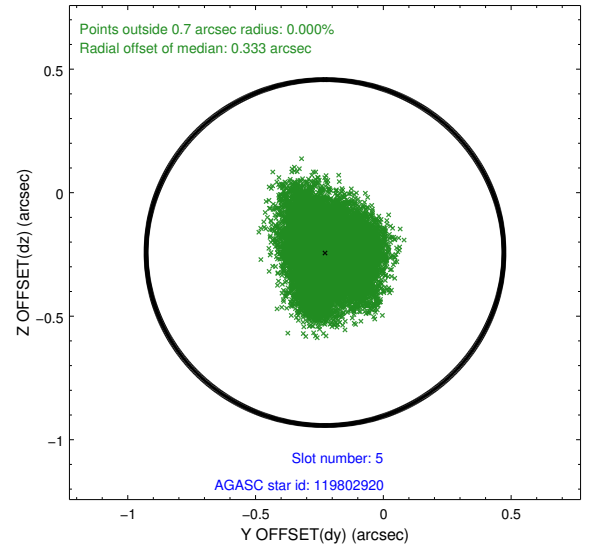
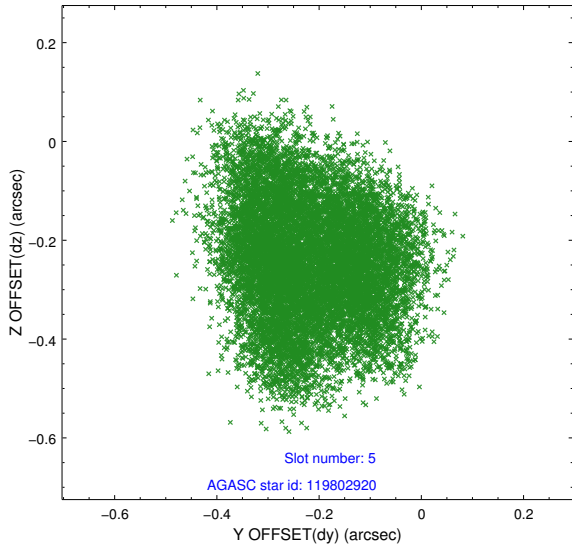
2.4.1 Slot 3



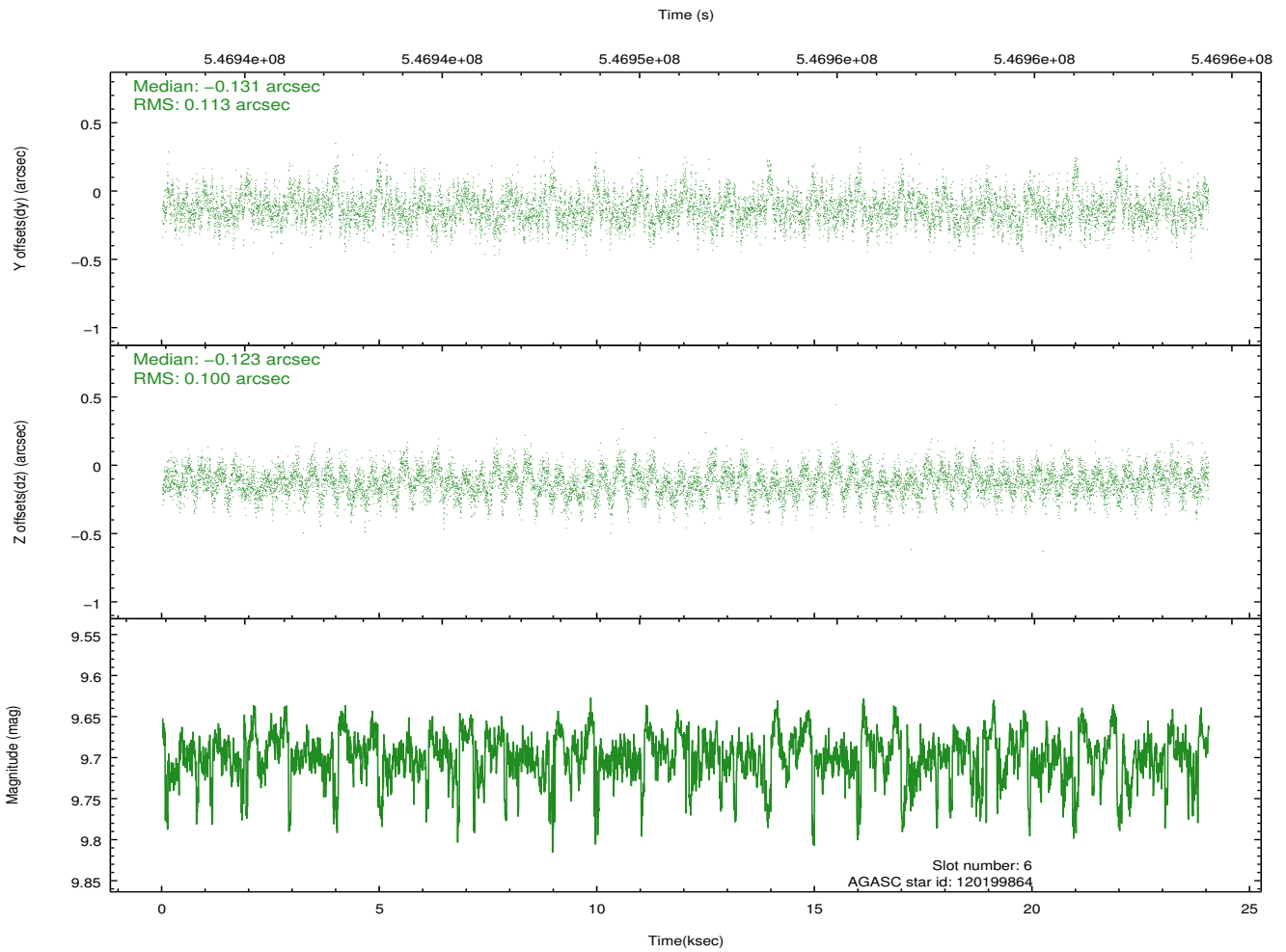
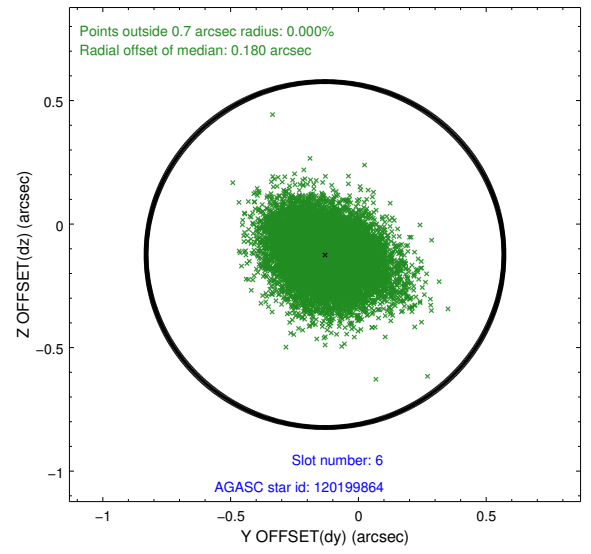
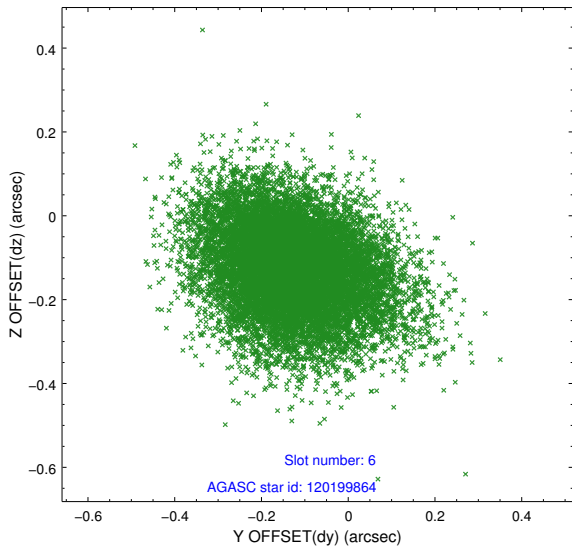
2.4.2 Slot 4



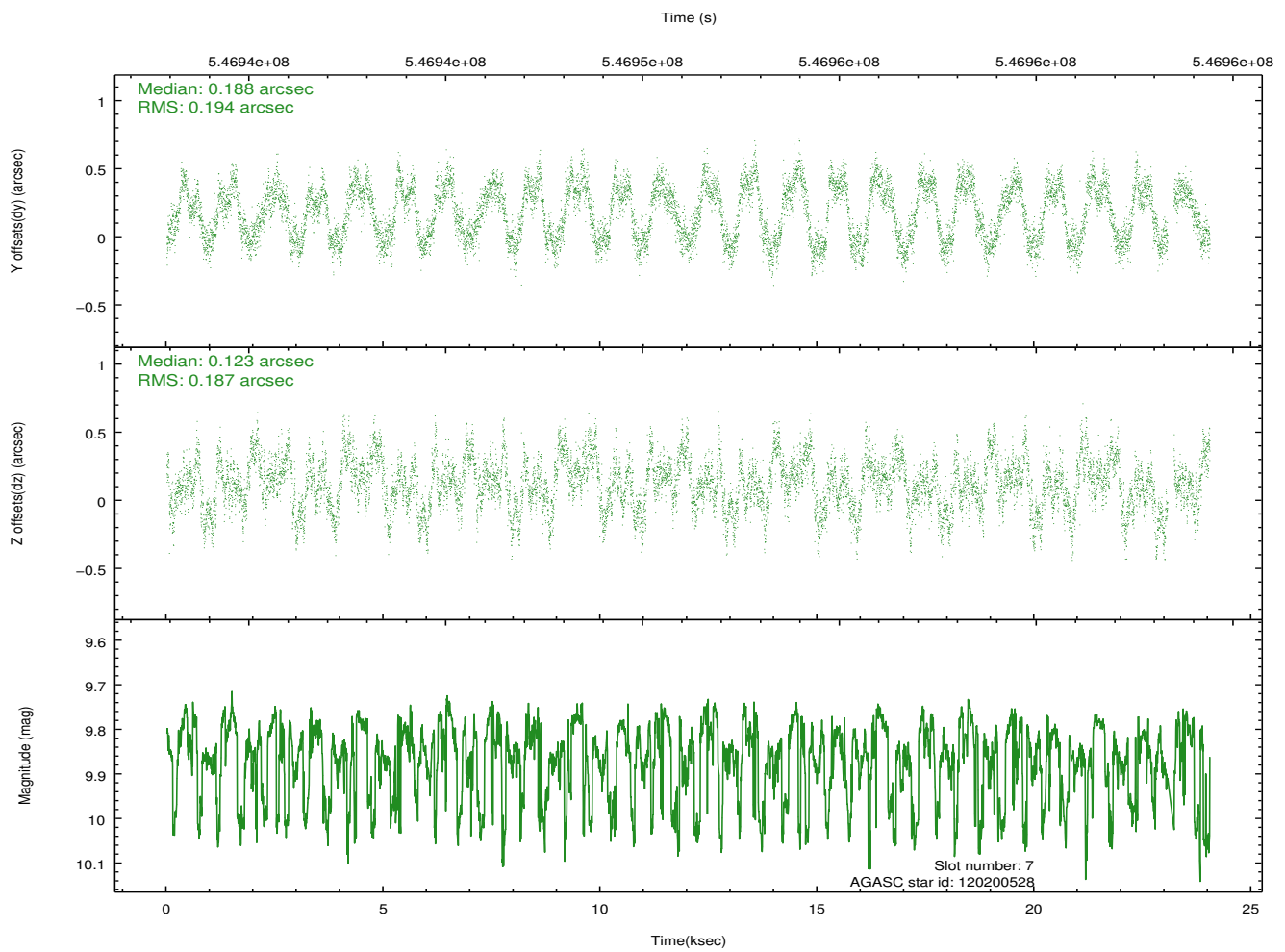
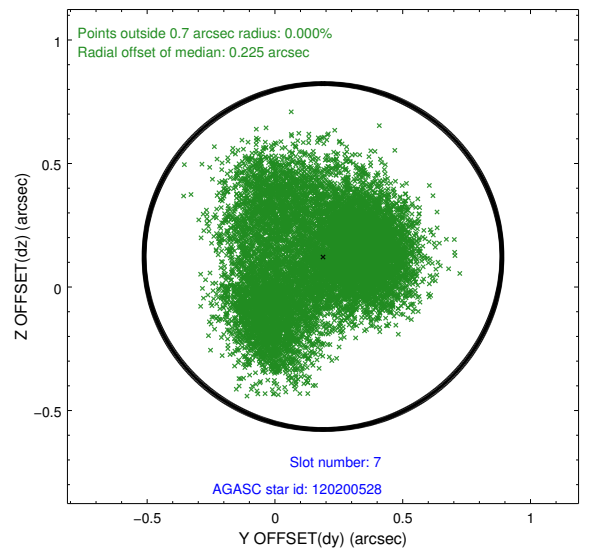
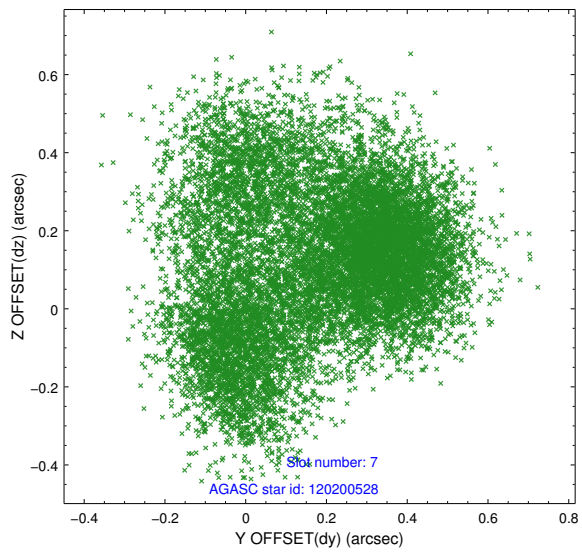
2.4.3 Slot 5



2.4.4 Slot 6

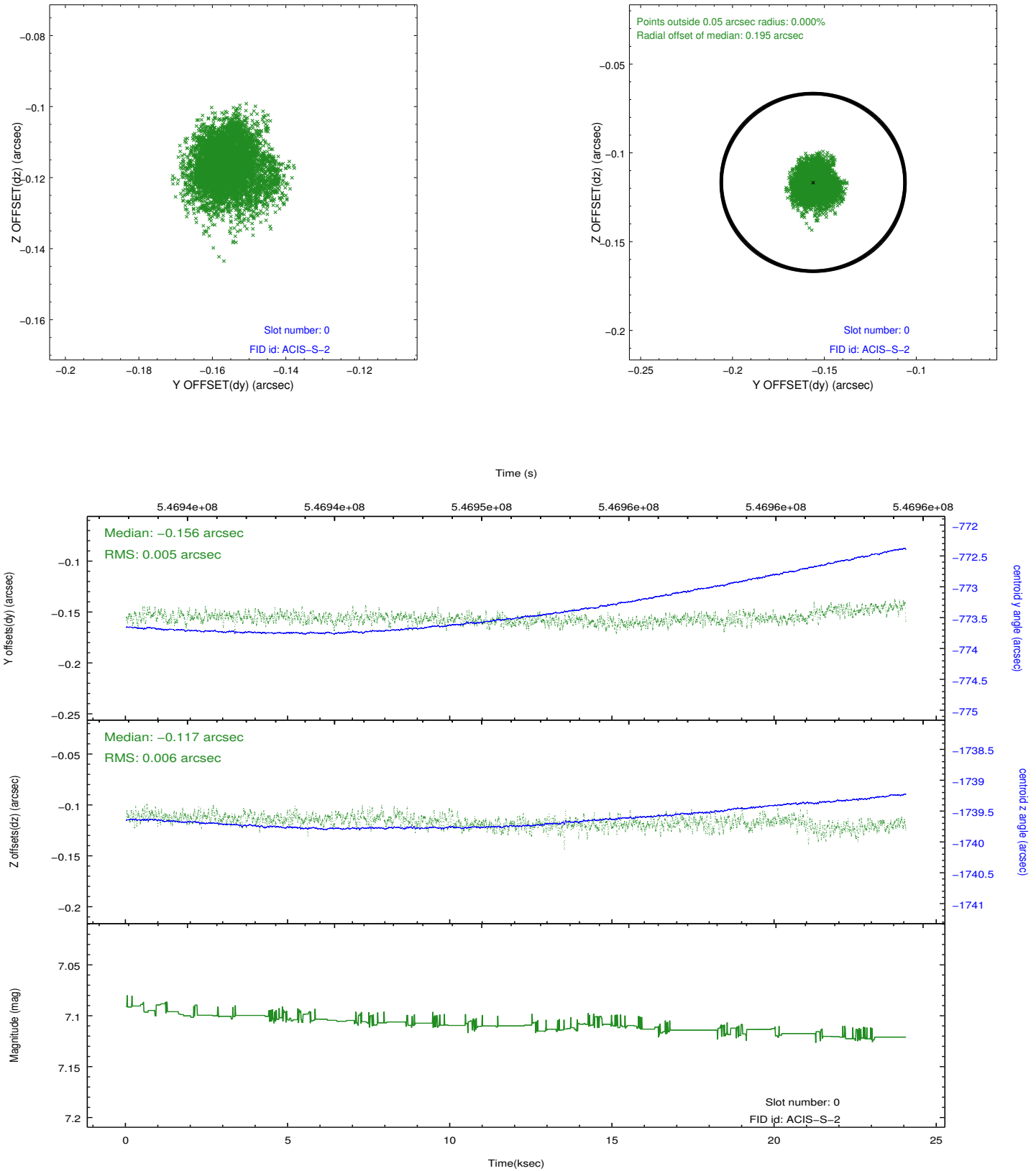


2.4.5 Slot 7

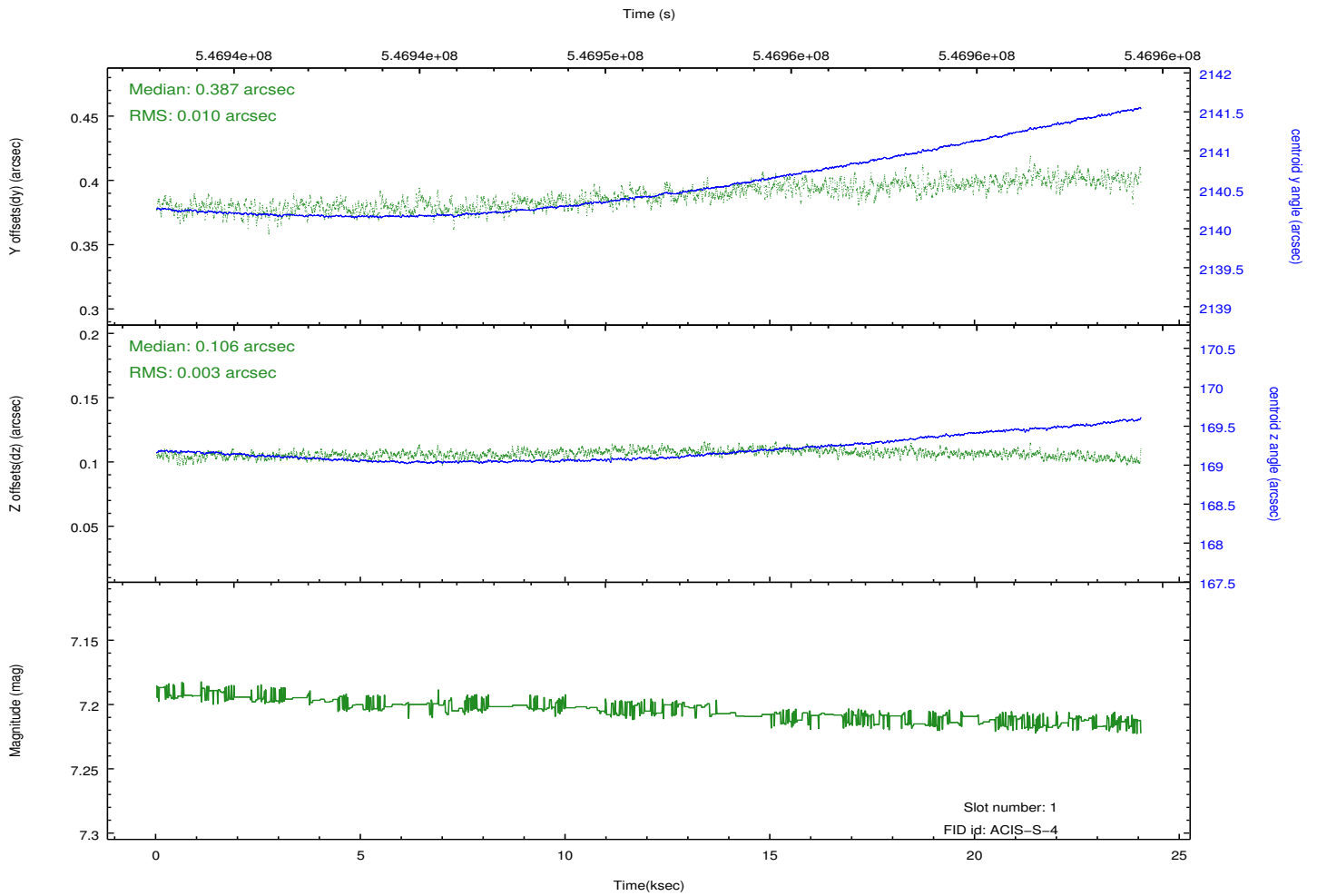
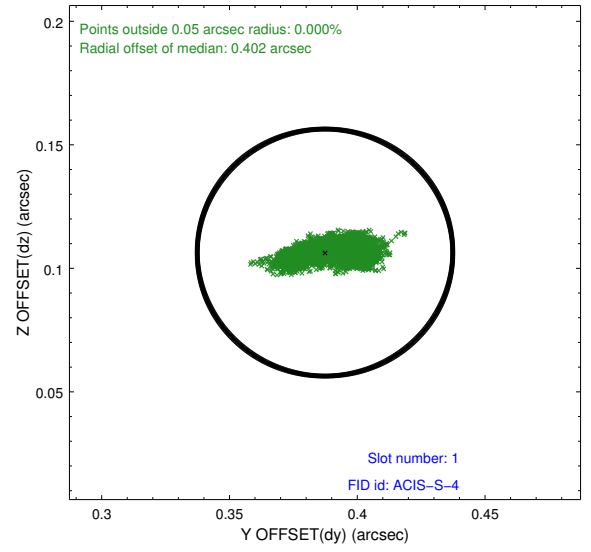
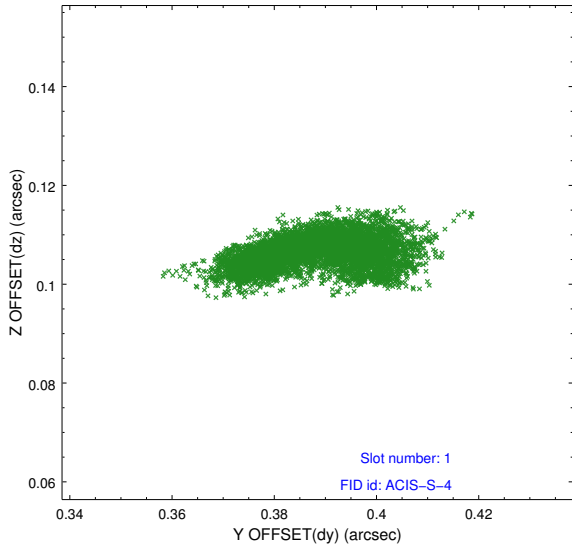


2.5 FID Slots

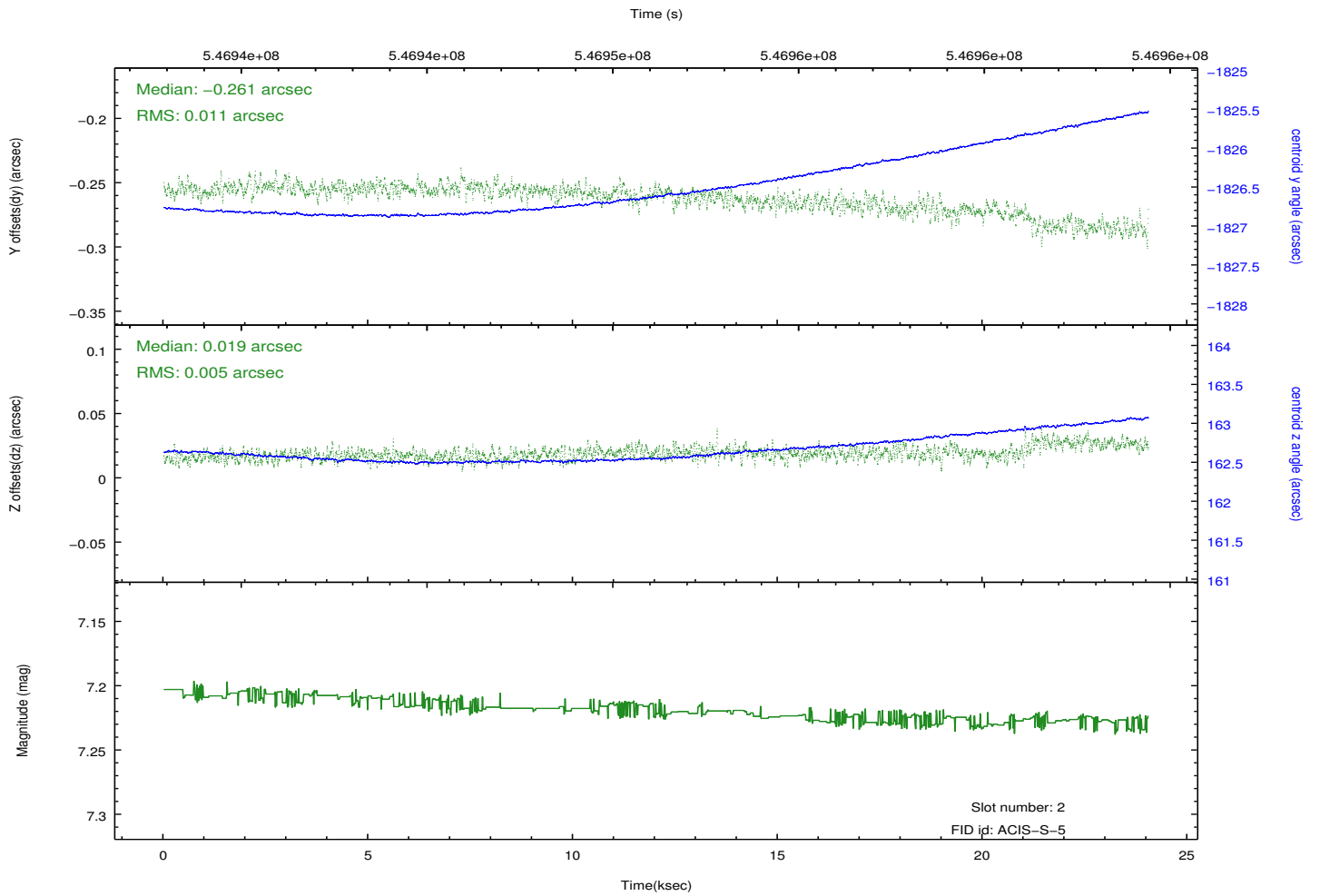
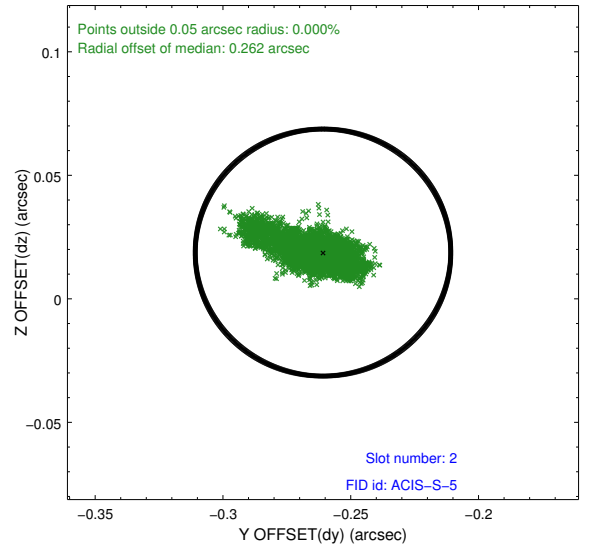
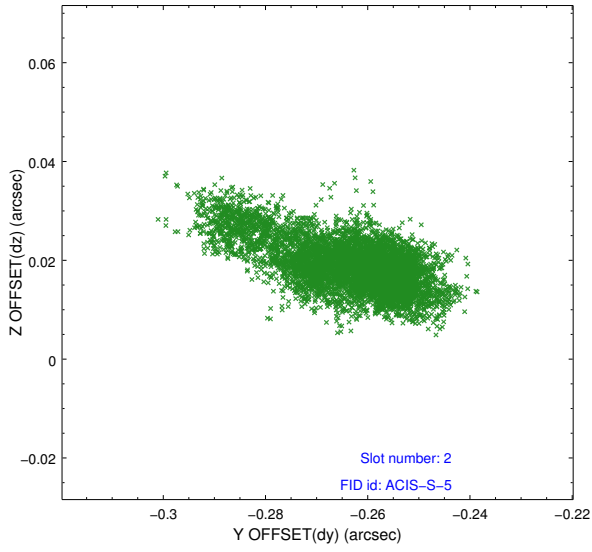
2.5.1 Slot 0



2.5.2 Slot 1



2.5.3 Slot 2



A Summary

A.1 Status

V&V Scientist	Joy Nichols
V&V Date (YYYY-MM-DD)	2015.05.03
V&V Edition	1
V&V Disposition and Status	OK
V&V Charge Time	23.643700181961

A.2 Comments