

V&V Reference Report

L2 ASCDS Version : 8.4.5

Observation 2818 - L2 Version 3
Chandra X-Ray Center

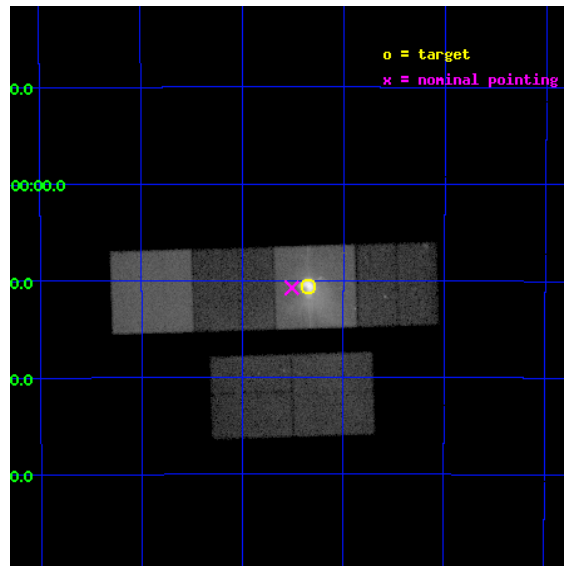
L2 Processing Date : Oct 1 2012

Contents

1	Front	2
2	OBI	3
2.1	OBI	3
2.1.1	Images	3
2.1.2	Bias	3
2.1.3	Parameters	4
2.1.4	Events	4
2.2	Compared Parameters	5
2.3	Aspect	6
2.4	Star Slots	9
2.4.1	Slot 3	9
2.4.2	Slot 4	10
2.4.3	Slot 5	11
2.4.4	Slot 6	12
2.4.5	Slot 7	13
2.5	FID Slots	14
2.5.1	Slot 0	14
2.5.2	Slot 1	15
2.5.3	Slot 2	16
A	Summary	17
A.1	Status	17
A.2	Comments	17

1 Front

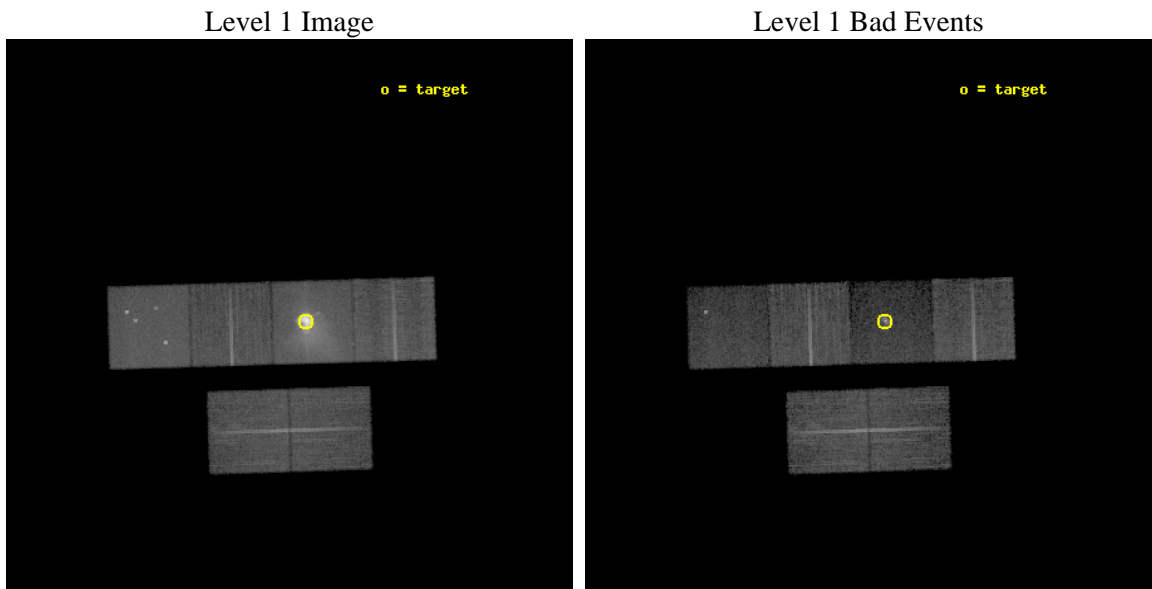
seq_num	500268	Sequence number
obs_id	2818	Observation id
title	THE DYNAMICAL PULSAR-WIND NEBULA IN THE VELA SNR	Proposal title
observer	Dr. George Pavlov	Principal investigator
object	VELA PWN	Source name
dtycycle	0	
cycle	P	events from which exps? Prim/Second/Both
ra_targ	128.83625	Observer's specified target RA [deg]
dec_targ	-45.176667	Observer's specified target Dec [deg]
ra_nom	128.8773953631	Nominal RA [deg]
dec_nom	-45.179293610247	Nominal Dec [deg]
roll_nom	358.29321484818	Nominal Roll [deg]
revision	3	Processing version of data
ontime	18902.400017589	Sum of GTIs [s]
livetime	18663.046446908	Livetime [s]
ontime2	18902.400017589	Sum of GTIs [s]
ontime3	18902.400017589	Sum of GTIs [s]
ontime5	18902.400017589	Sum of GTIs [s]
ontime6	18902.400017589	Sum of GTIs [s]
ontime7	18902.400017589	Sum of GTIs [s]
ontime8	18902.400017589	Sum of GTIs [s]
l2events	533189	Number of level 2 events



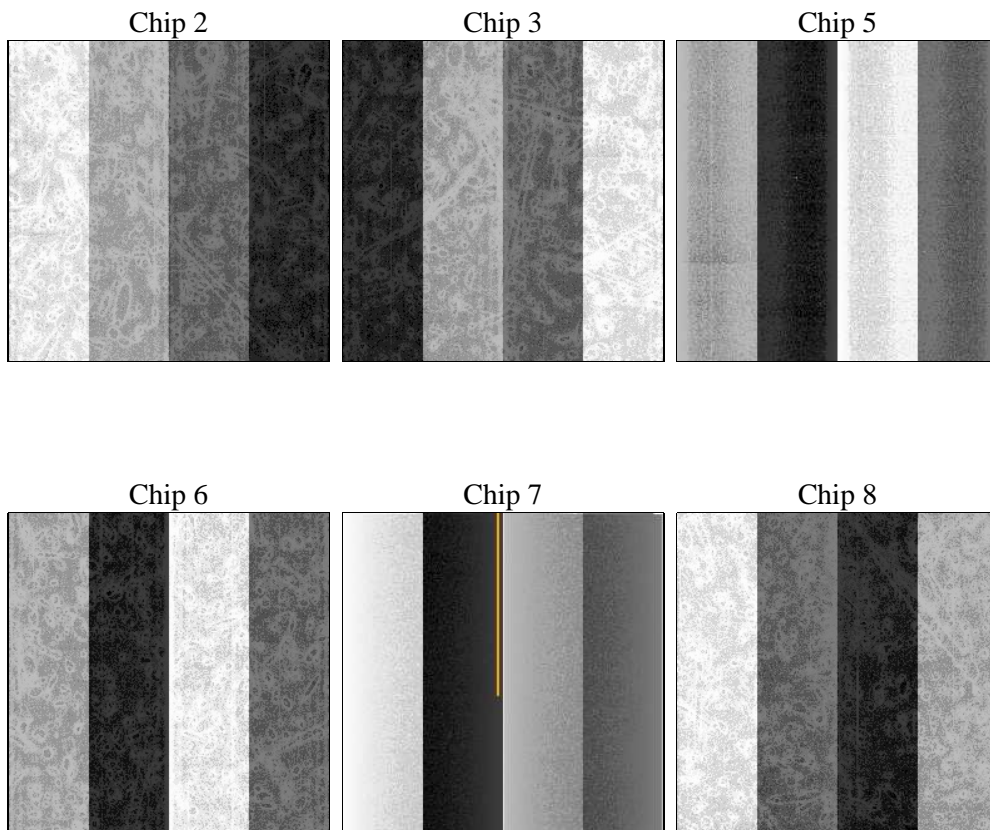
2 OBI

2.1 OBI

2.1.1 Images



2.1.2 Bias



2.1.3 Parameters

obi_num	0	Obi number	sched_exp_time	18763.408000	[s] Scheduled observation exposure time
ascdsver	8.4.5	Processing system revision	ontime	18902.400017589	Sum of GTIs [s]
caldbver	4.5.2	 	ontime2	18902.400017589	Sum of GTIs [s]
date	2012-10-01T03:56:21	Date and time of file creation	ontime3	18902.400017589	Sum of GTIs [s]
revision	3	Processing version of data	ontime5	18902.400017589	Sum of GTIs [s]
			ontime6	18902.400017589	Sum of GTIs [s]
			ontime7	18902.400017589	Sum of GTIs [s]
			ontime8	18902.400017589	Sum of GTIs [s]
			l1events	1055878	Number of level 1 events

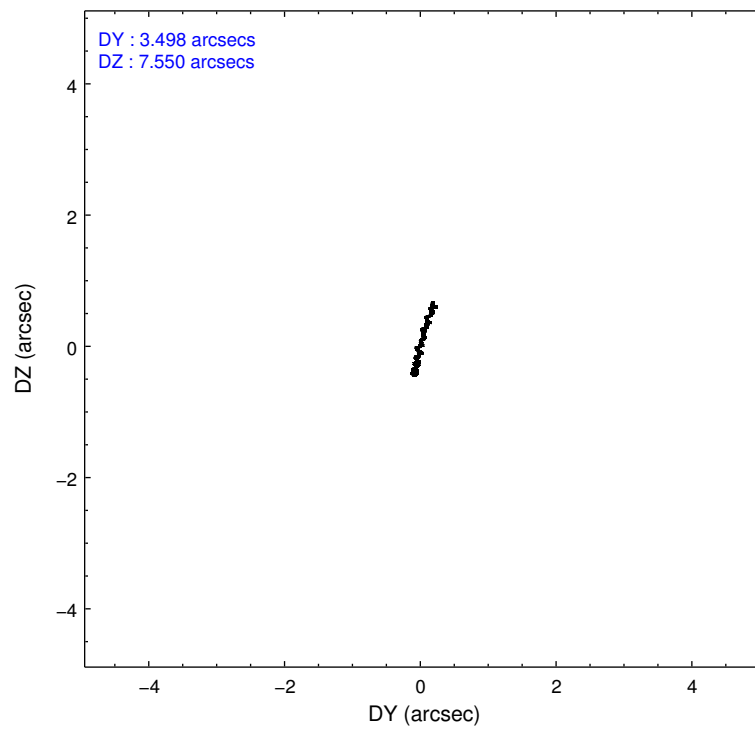
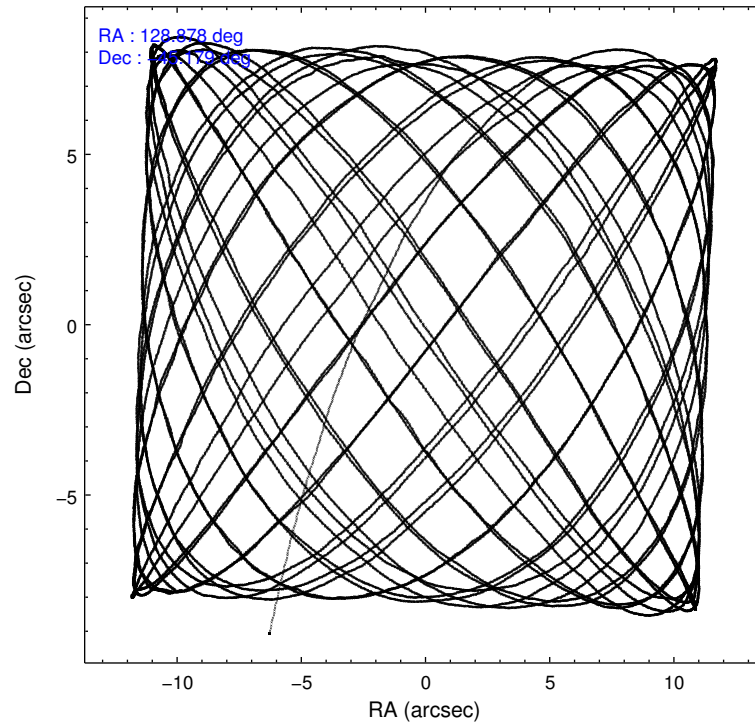
2.1.4 Events

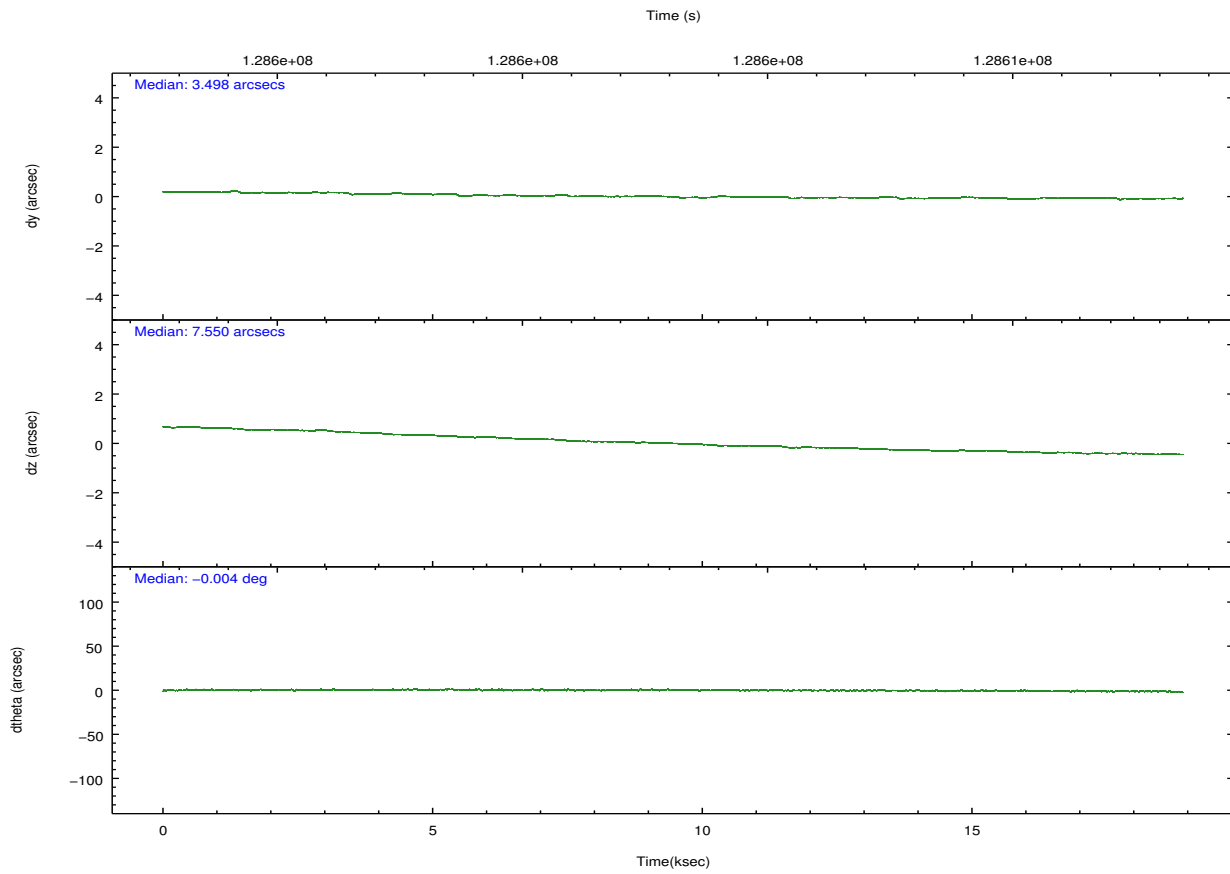
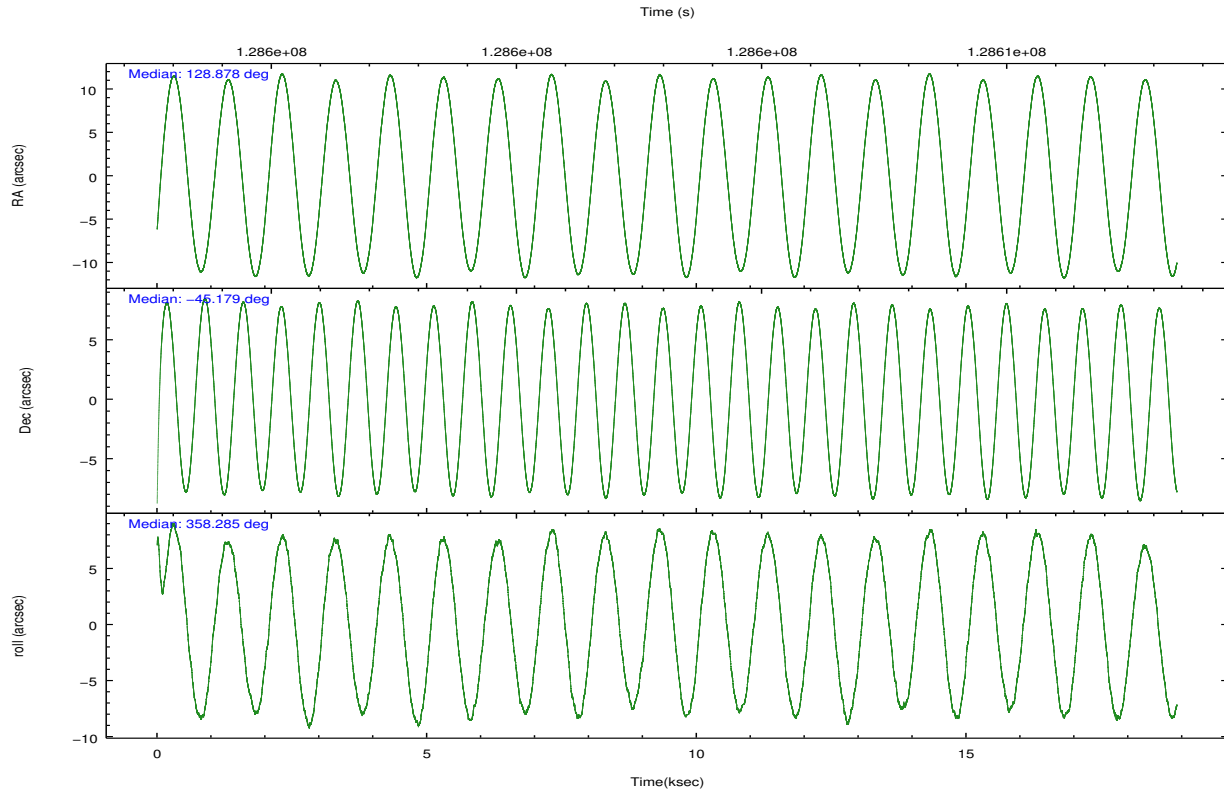
	ccd 2	ccd 3	ccd 5	ccd 6	ccd 7	ccd 8		ccd 2	ccd 3	ccd 5	ccd 6	ccd 7	ccd 8
level 1 events	124332	118115	153636	121322	396957	141516	grade 0 events	20357	23803	28998	21380	108948	25091
rejected events	95791	86055	56714	91656	57018	93554		16%	20%	18%	17%	27%	17%
rejected %	77%	72%	36%	75%	14%	66%	grade 1 events	94	121	311	104	766	129
								0%	0%	0%	0%	0%	0%
							grade 2 events	3747	3711	26566	3595	86049	7500
								3%	3%	17%	2%	21%	5%
							grade 3 events	1453	1479	5841	1434	38023	4278
								1%	1%	3%	1%	9%	3%
							grade 4 events	1470	1484	5799	1476	37727	3909
								1%	1%	3%	1%	9%	2%
							grade 5 events	2474	2844	10633	3046	12199	4519
								1%	2%	6%	2%	3%	3%
							grade 6 events	1803	1940	31902	2158	73200	7881
								1%	1%	20%	1%	18%	5%
							grade 7 events	92934	82733	43586	88129	40045	88209
								74%	70%	28%	72%	10%	62%

2.2 Compared Parameters

Parameter	Planned	Actual	Parameter	Planned	Actual
Instrument	ACIS	ACIS	Obspar format version number	7	7
Detector	ACIS-235678	ACIS-235678	Obspar file type	PREDICTED	ACTUAL
Grating	NONE	NONE	Obspar update status	NONE	UPDATED
Data mode	FAINT	FAINT	Number of optional ACIS chips dropped	0	0
Observation mode	POINTING	POINTING	On-chip summing requested	N	N
[deg] Pointing RA	128.843548	128.8773953631048	Subarray requested	NONE	NONE
[deg] Pointing Dec	-45.192511	-45.17929361024739	Alternating exposures requested	N	N
[deg] Pointing Roll	358.112566	358.2932148481802	[s] Primary exposure time	0.000000	3.2
[mm] SIM focus pos	-0.684267	-0.6828225247311905			
[mm] SIM defocus	0	0.001444936568705701			
[mm] SIM translation stage pos	-190.132523	-190.1400660498719			
[mm] SIM translation stage offset	0	0.00754346686406393			
[s] Observation start time (MET)	128593765.184000	128592486.09437			
Observation start date	2002-01-28T08:28:21	2002-01-28T08:08:06			
[s] Observation end time (MET)	128612528.184000	128612843.10769			
Observation end date	2002-01-28T13:41:04	2002-01-28T13:47:23			
Read mode	TIMED	TIMED			

2.3 Aspect



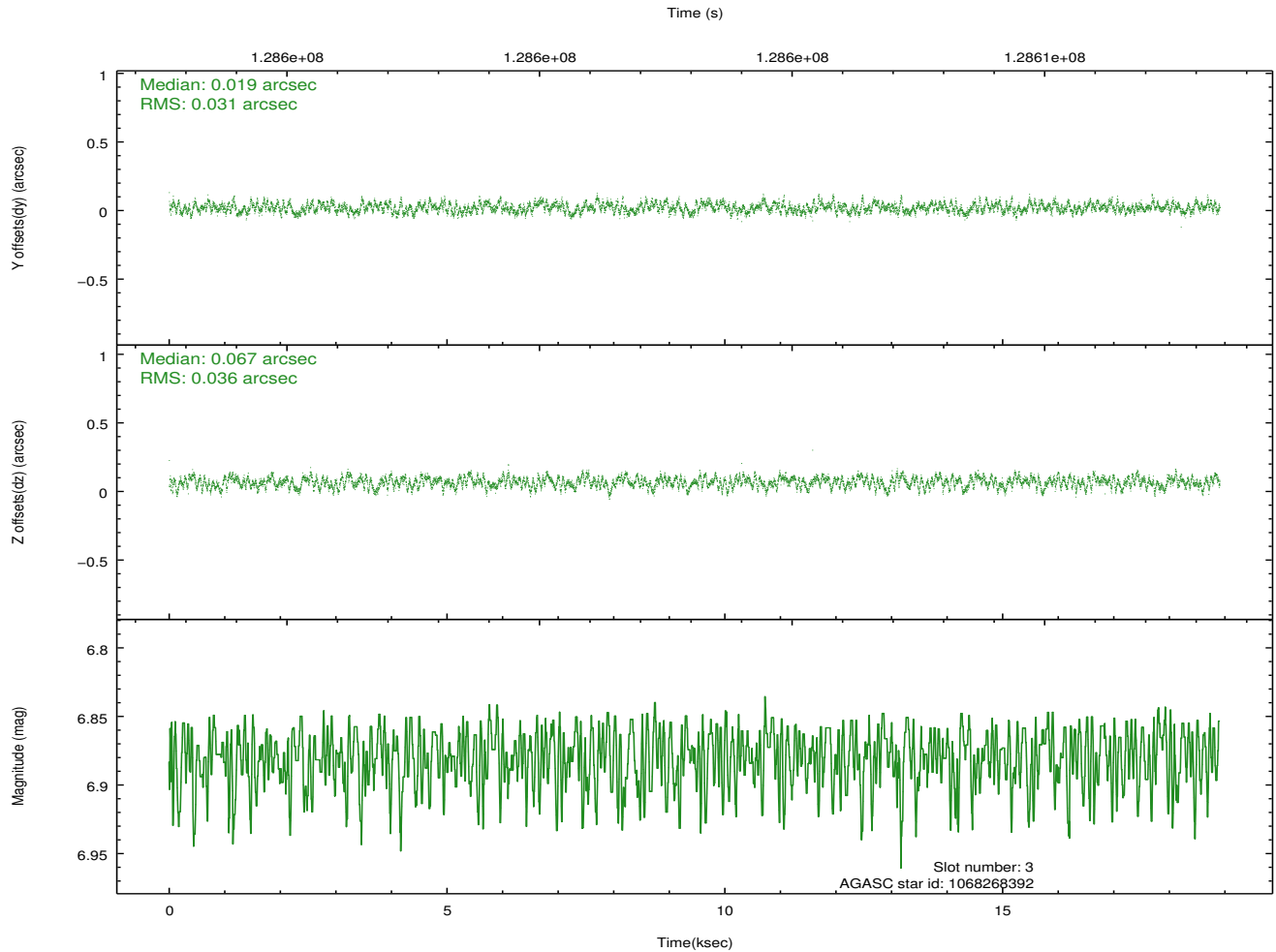
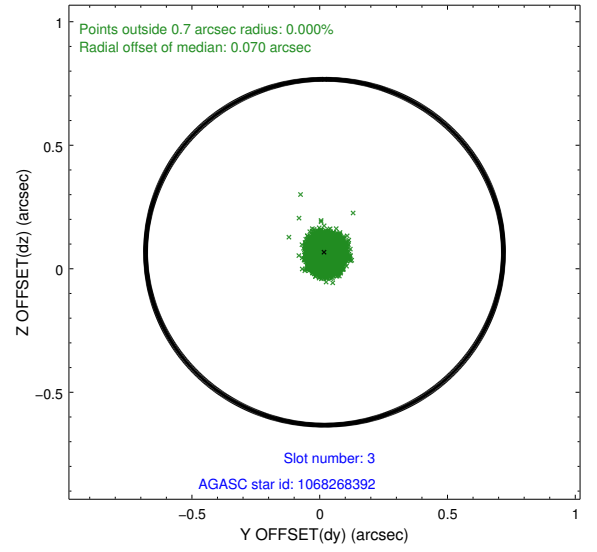
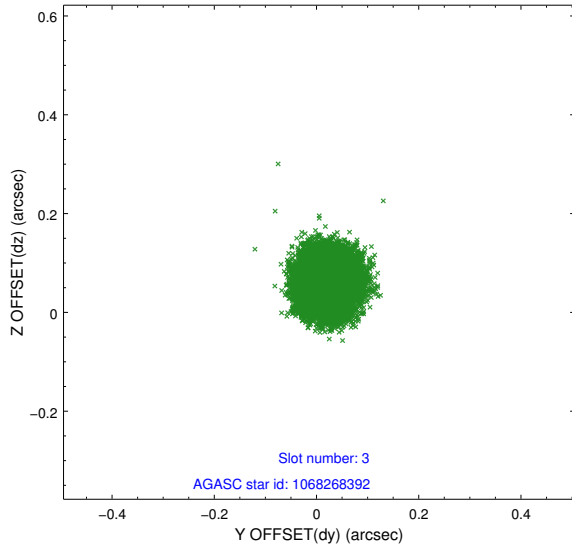


Slot Statistics

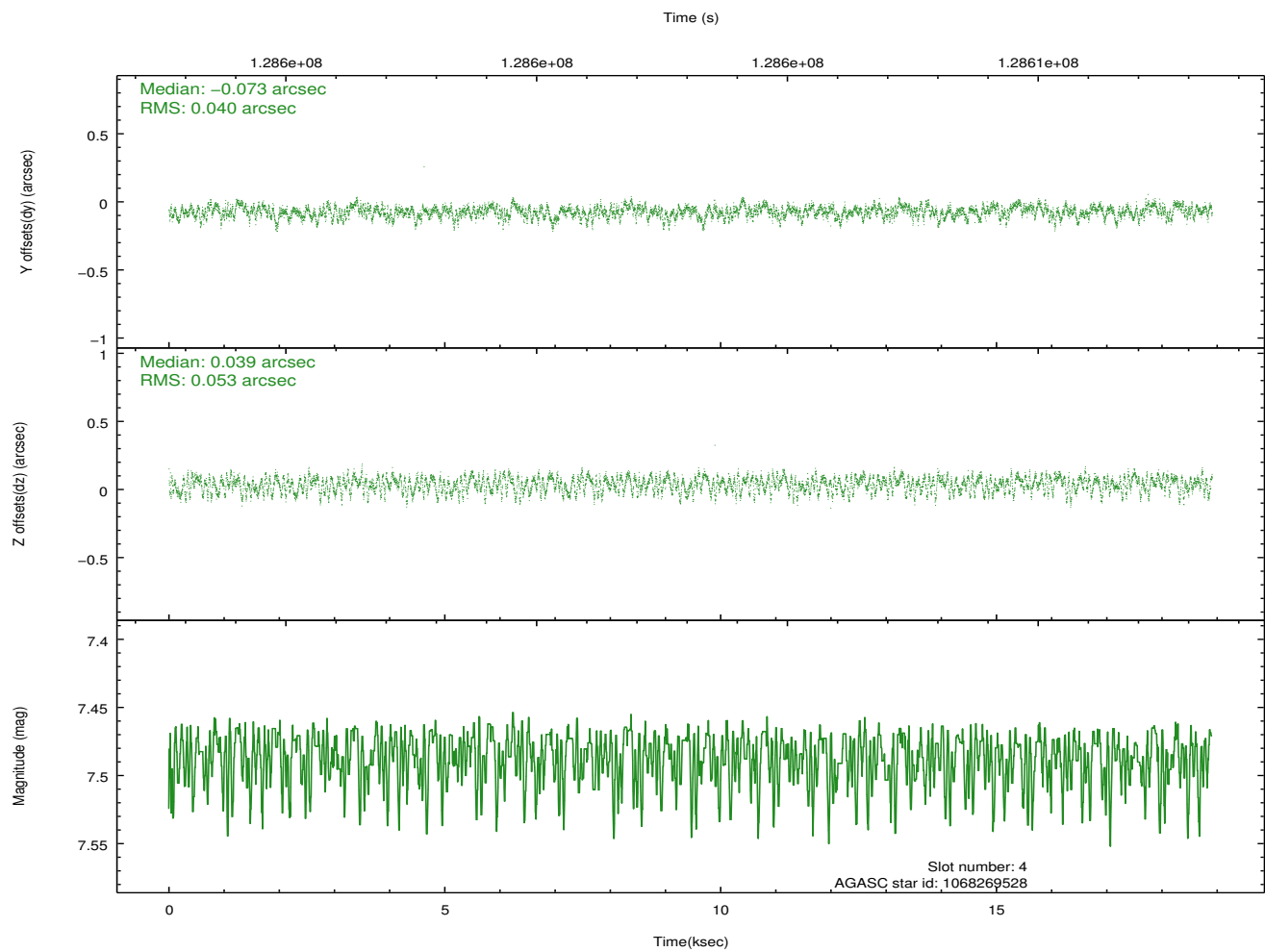
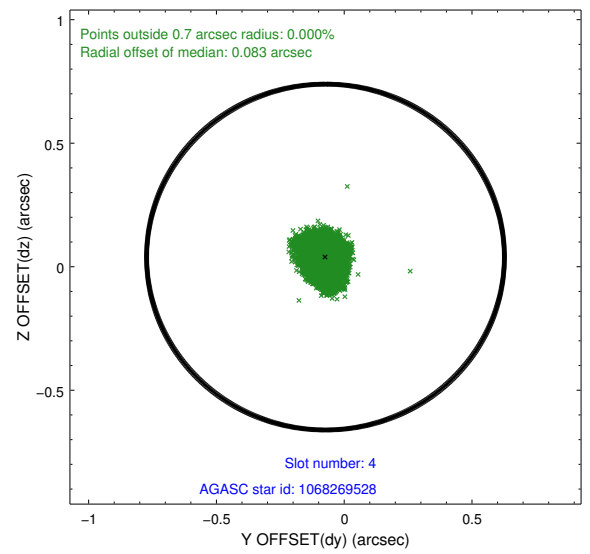
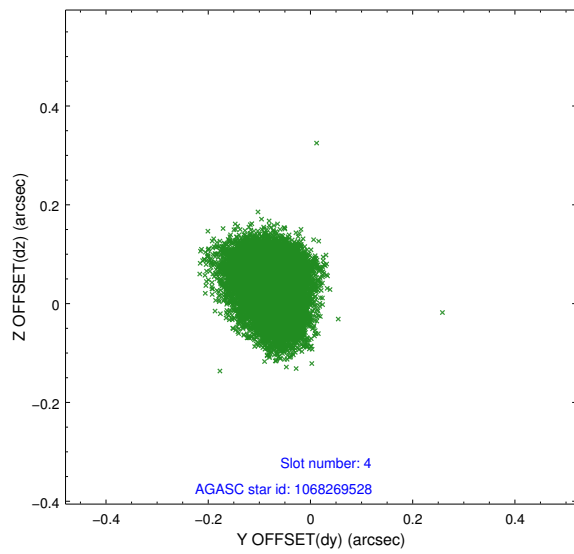
slot	status	id	mag	n_pts	med_dy	med_dz	dr1	dr2	ra	dec	mean_y	mean_z
0	FID	ACIS-S-1	7.19	4612	0.042	-0.035	0.016	0.032	0.000000	0.000000	939.87	-1724.45
1	FID	ACIS-S-4	7.20	4611	-0.034	0.007	0.013	0.021	0.000000	0.000000	2157.34	179.52
2	FID	ACIS-S-5	7.24	4611	-0.036	0.040	0.008	0.014	0.000000	0.000000	-1808.79	173.43
3	GUIDE	1068268392	6.88	9224	0.019	0.067	0.052	0.080	128.257754	-45.752904	-1404.25	-2070.25
4	GUIDE	1068269528	7.49	9224	-0.073	0.039	0.073	0.113	127.902889	-45.784783	-2289.98	-2223.17
5	GUIDE	1068376536	7.65	9225	-0.026	0.184	0.055	0.091	129.556408	-45.593502	1842.03	-1391.32
6	GUIDE	1005871784	8.01	9222	0.030	-0.143	0.093	0.139	128.533947	-44.544833	-871.27	2302.33
7	GUIDE	1005861048	8.42	9219	0.046	-0.145	0.090	0.139	128.669106	-44.528323	-527.08	2374.64

2.4 Star Slots

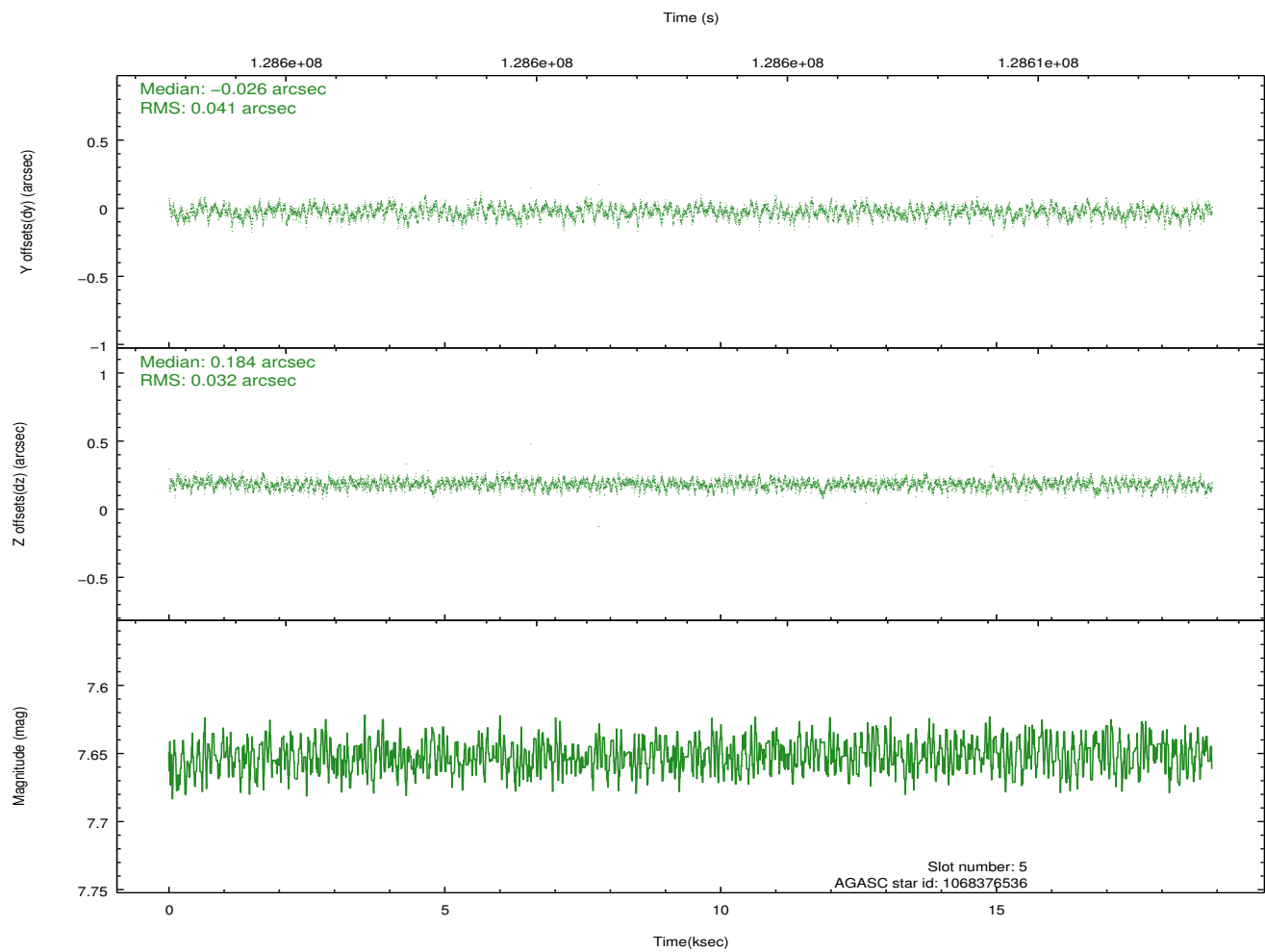
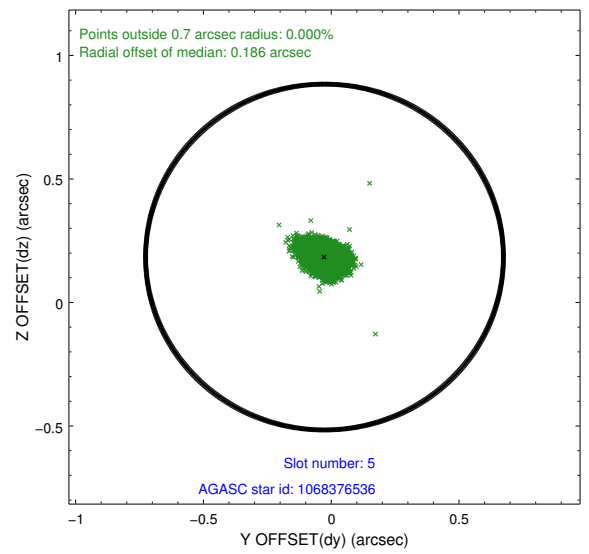
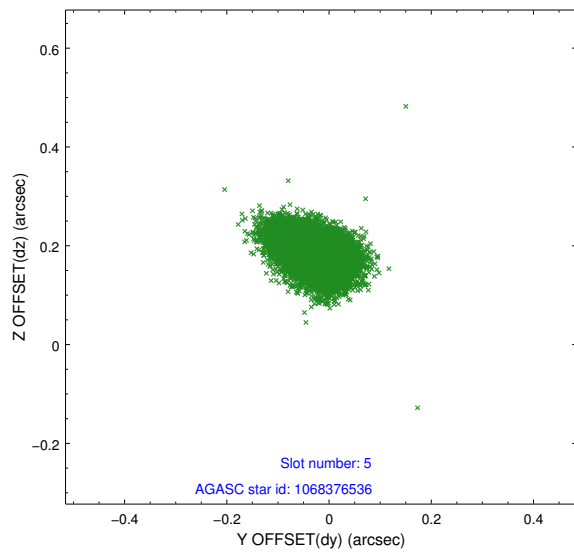
2.4.1 Slot 3



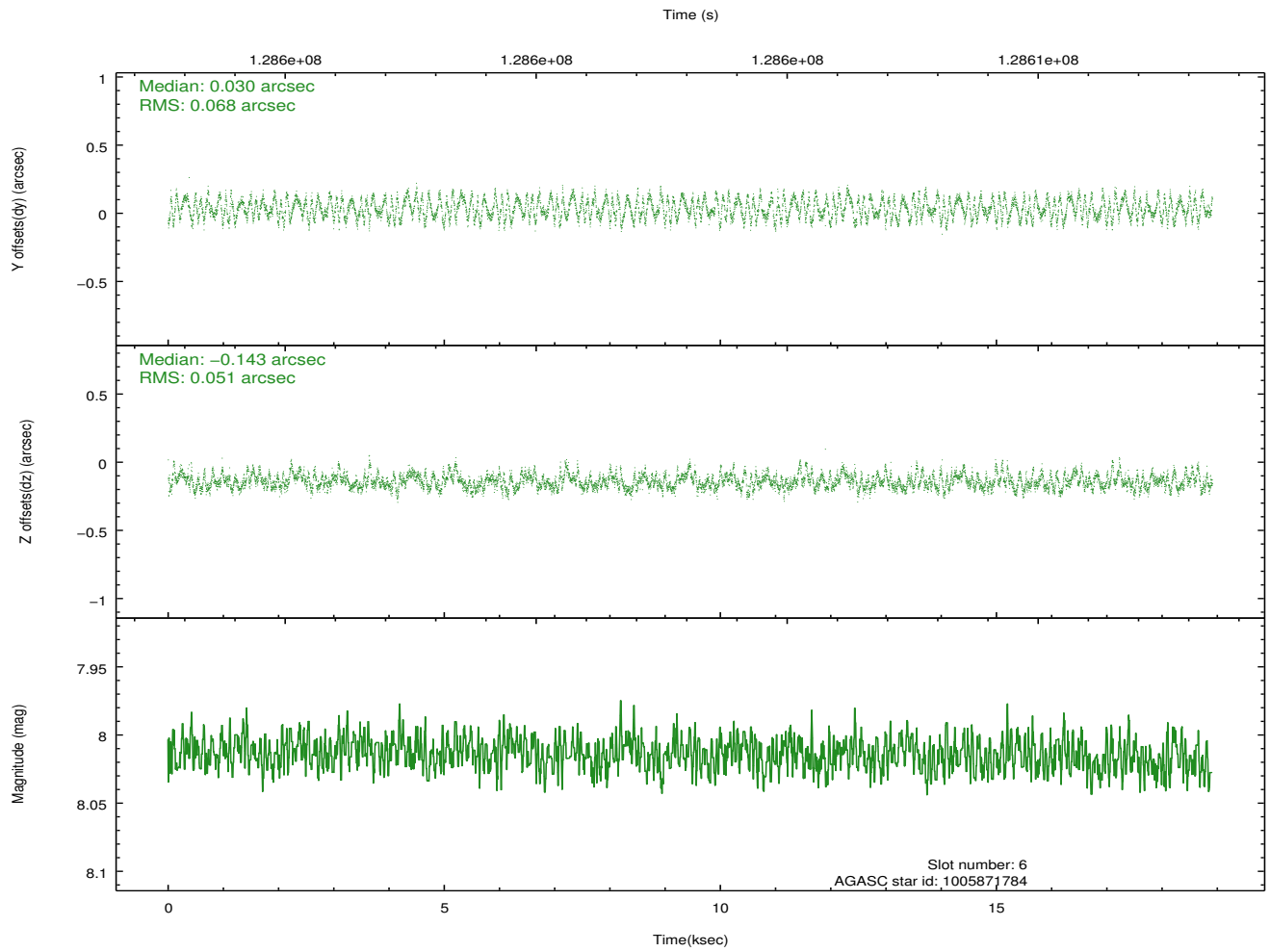
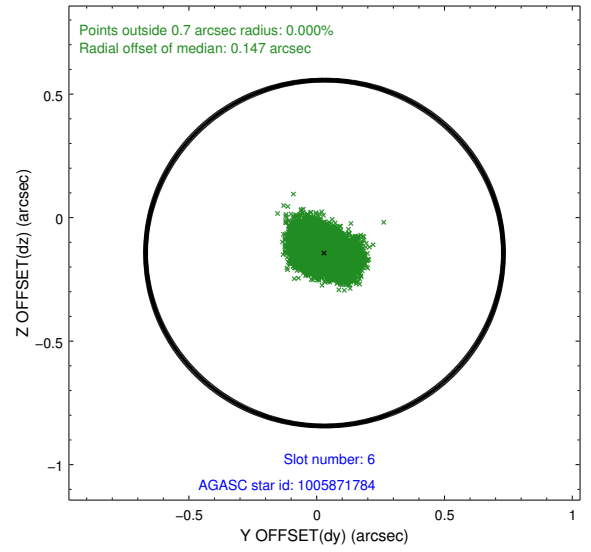
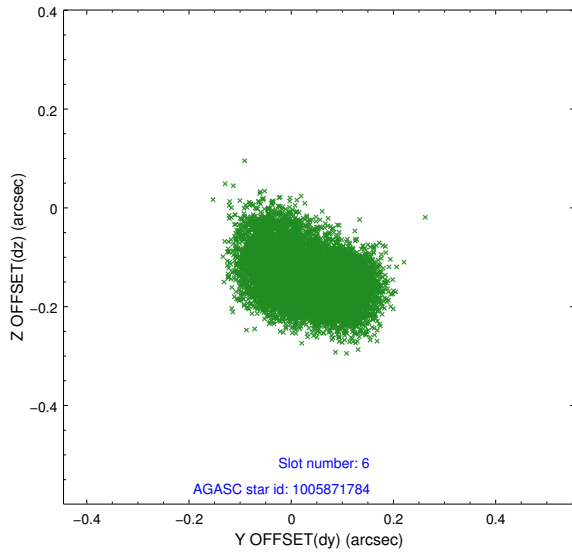
2.4.2 Slot 4



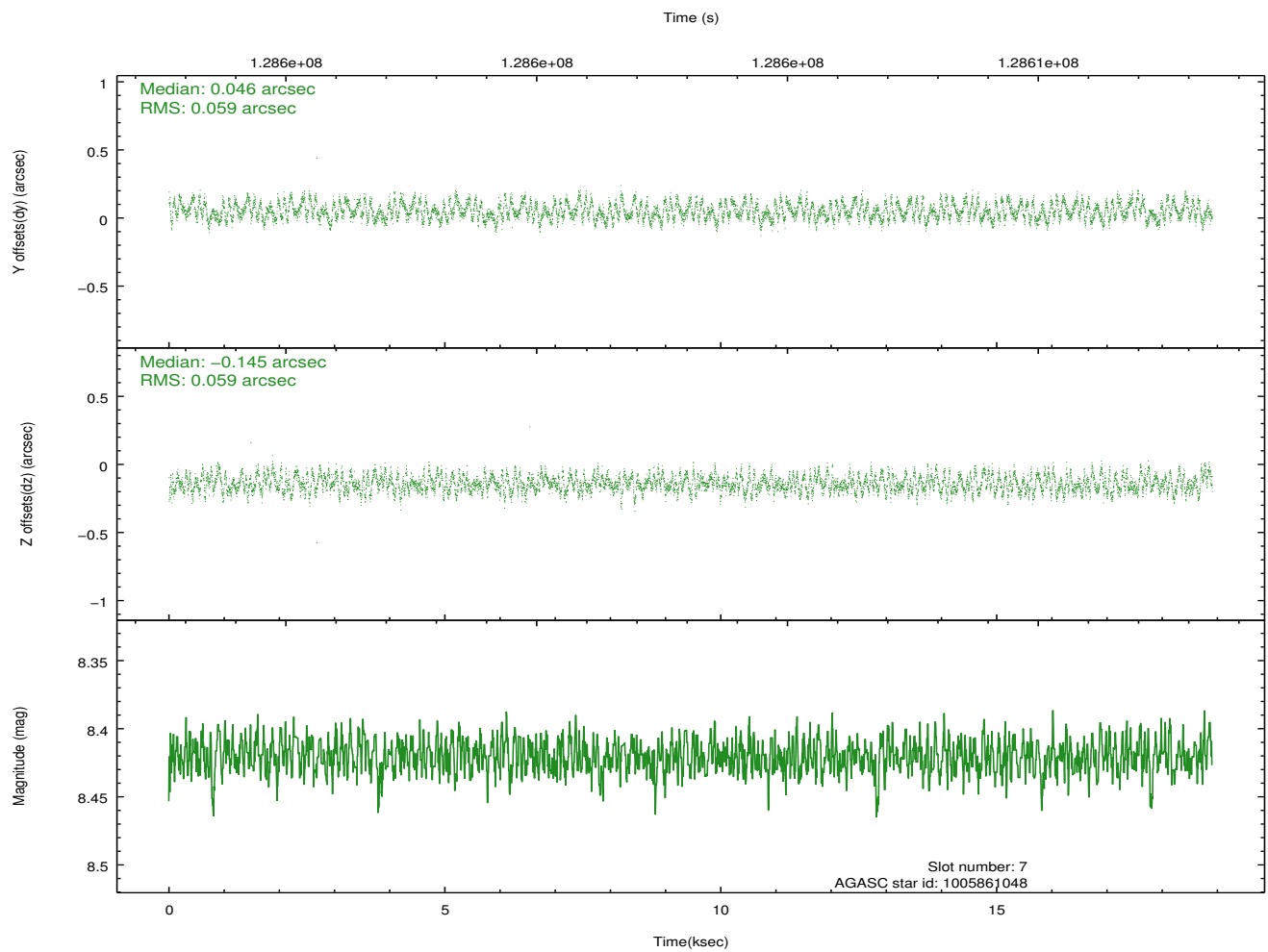
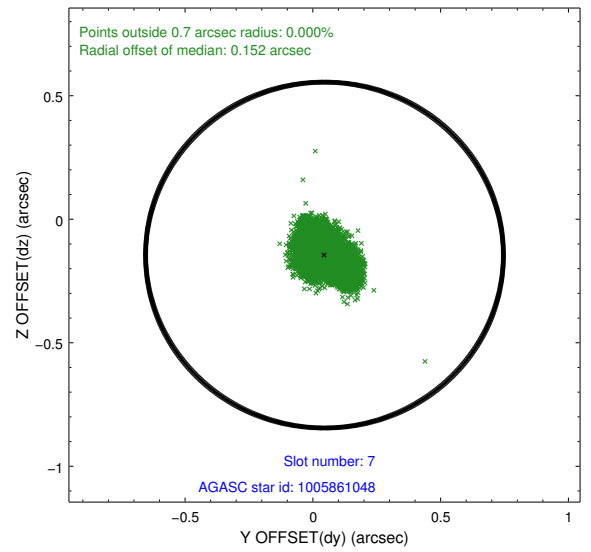
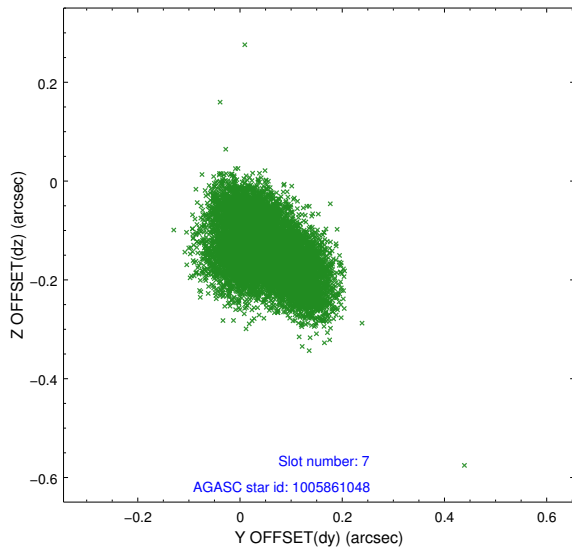
2.4.3 Slot 5



2.4.4 Slot 6

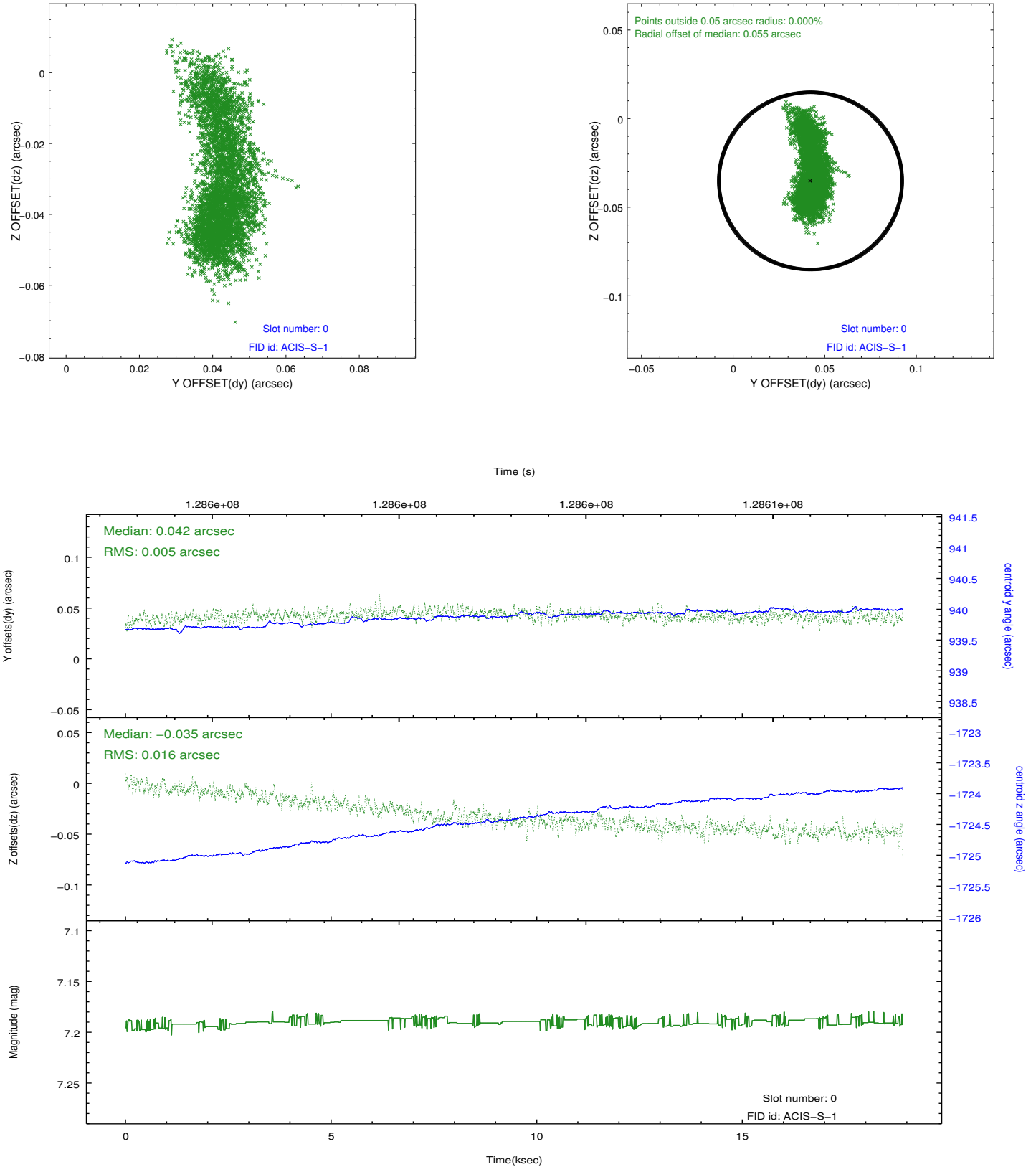


2.4.5 Slot 7

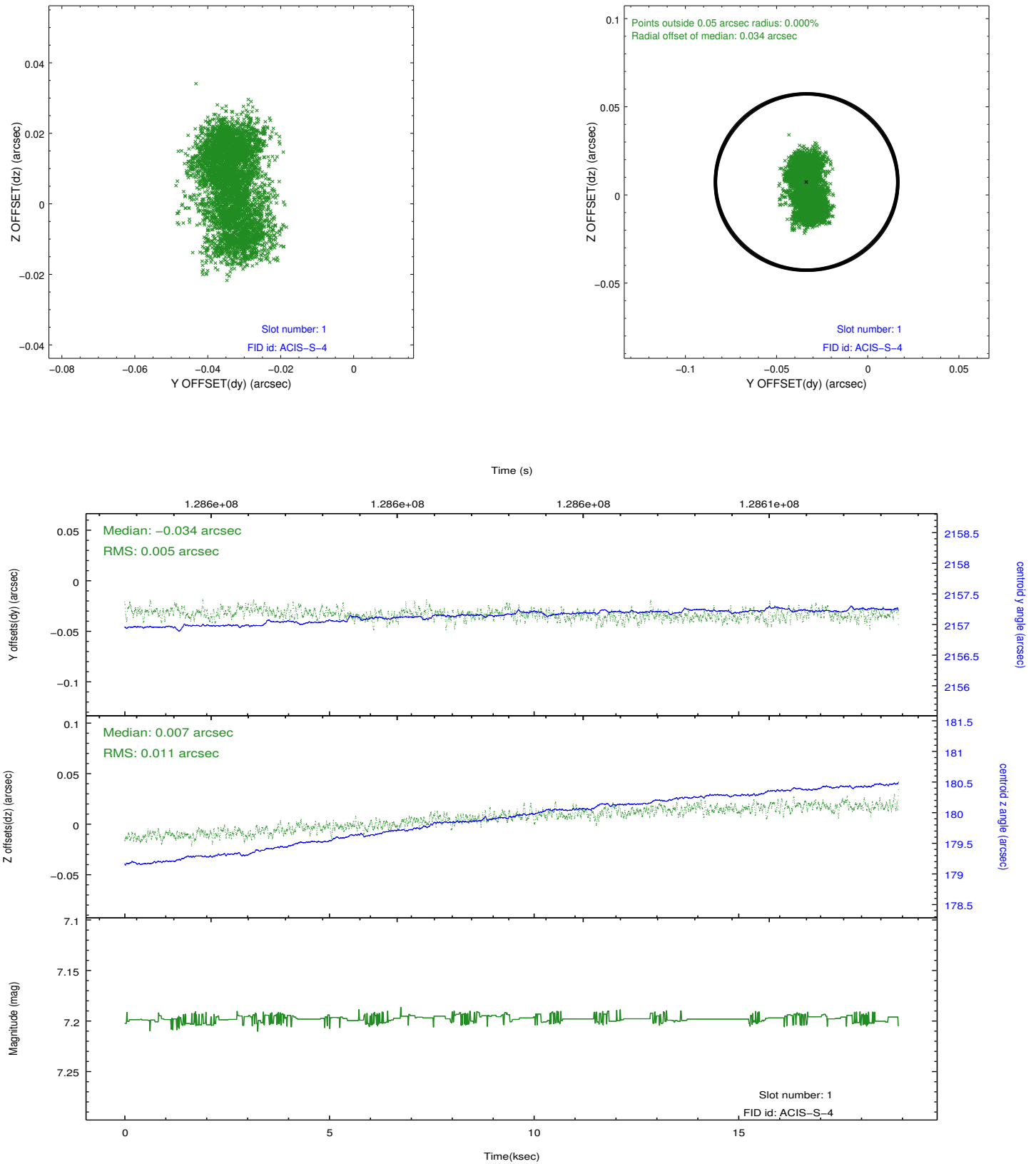


2.5 FID Slots

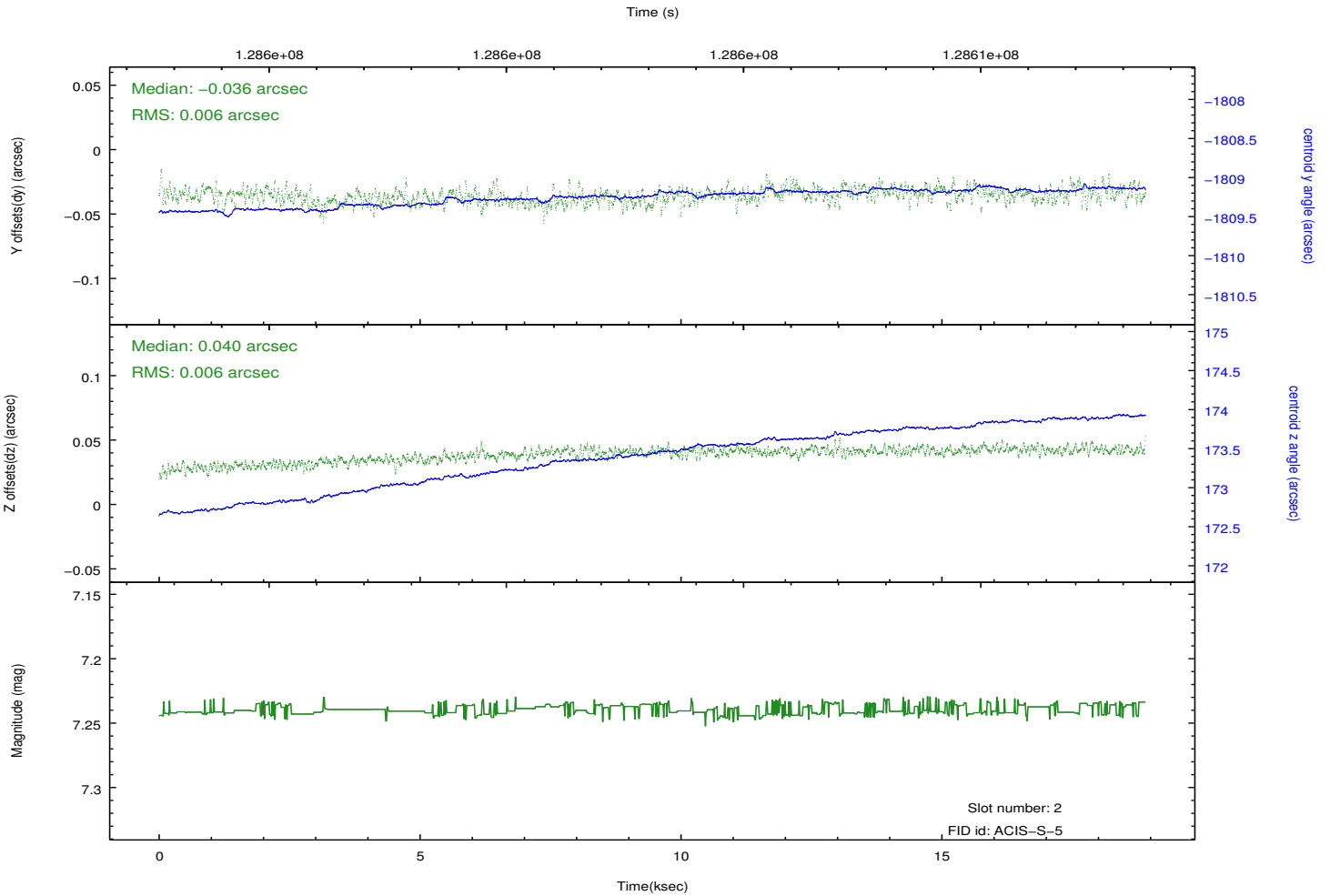
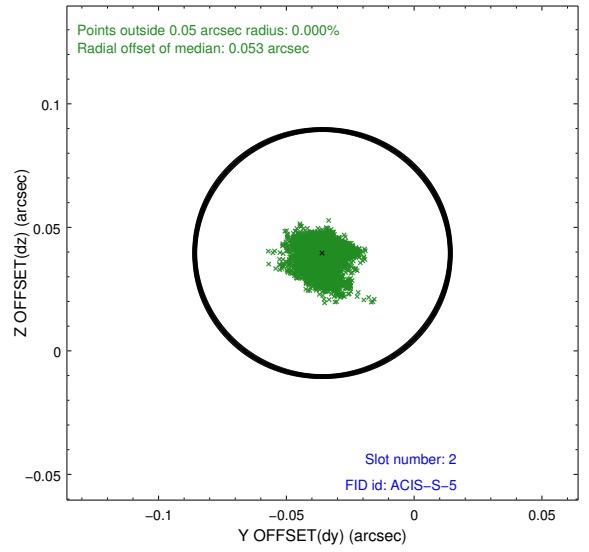
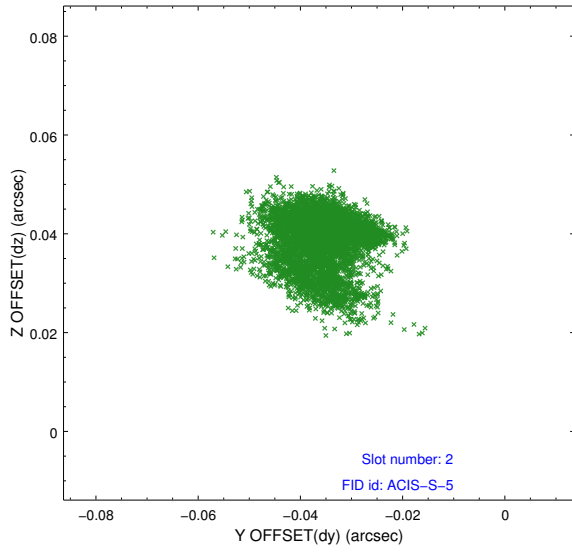
2.5.1 Slot 0



2.5.2 Slot 1



2.5.3 Slot 2



A Summary

A.1 Status

V&V Scientist	Jen Lauer
V&V Date (YYYY-MM-DD)	2012.10.03
V&V Edition	1
V&V Disposition and Status	OK
V&V Charge Time	18.902

A.2 Comments