

V&V Reference Report

L2 ASCDS Version : 8.4.5

Observation 2968 - L2 Version 3
Chandra X-Ray Center

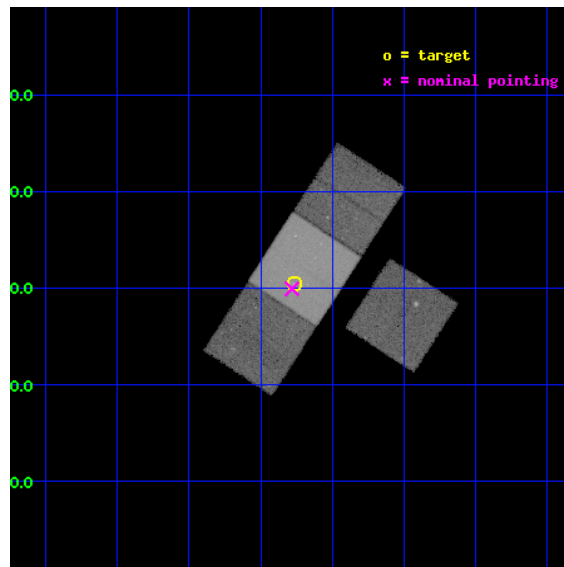
L2 Processing Date : Nov 4 2012

Contents

1	Front	2
2	OBI	3
2.1	OBI	3
2.1.1	Images	3
2.1.2	Bias	3
2.1.3	Parameters	4
2.1.4	Events	4
2.2	Compared Parameters	5
2.3	Aspect	6
2.4	Star Slots	9
2.4.1	Slot 3	9
2.4.2	Slot 4	10
2.4.3	Slot 5	11
2.4.4	Slot 6	12
2.4.5	Slot 7	13
2.5	FID Slots	14
2.5.1	Slot 0	14
2.5.2	Slot 1	15
2.5.3	Slot 2	16
A	Summary	17
A.1	Status	17
A.2	Comments	17

1 Front

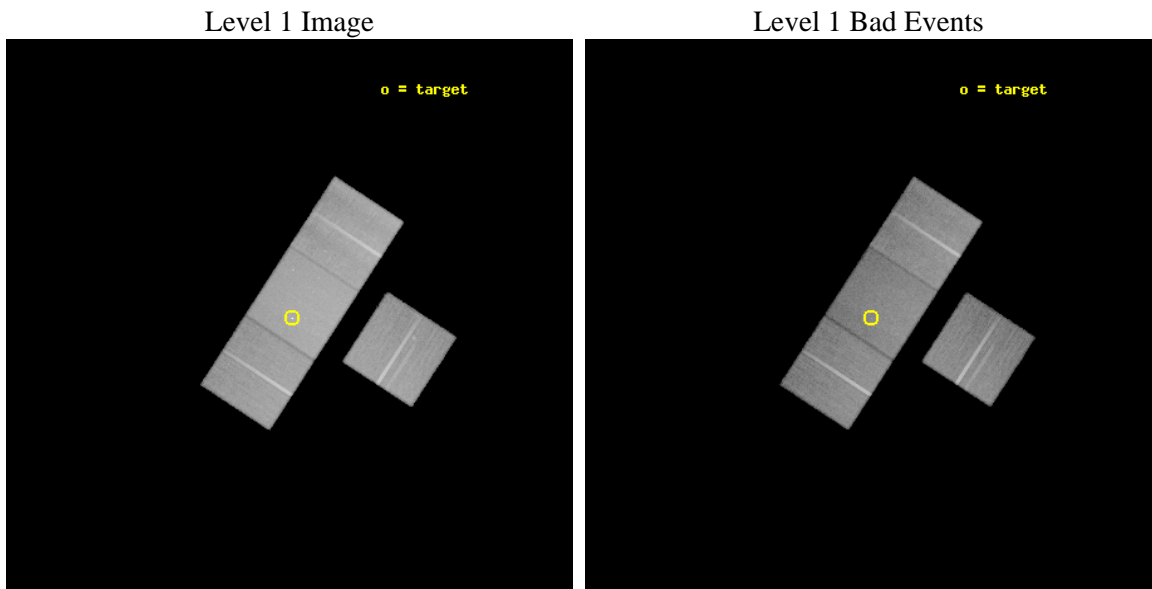
seq_num	700407	Sequence number
obs_id	2968	Observation id
title	A CHANDRA OBSERVATION OF THE UNUSUAL RADIO GALAXY 3C 403	Proposal
observer	Dr. Stephen Murray	Principal investigator
object	3C403	Source name
dtcycle	0	
cycle	P	events from which exps? Prim/Second/Both
ra_targ	298.066667	Observer's specified target RA [deg]
dec_targ	2.507778	Observer's specified target Dec [deg]
ra_nom	298.07043487921	Nominal RA [deg]
dec_nom	2.4988911721613	Nominal Dec [deg]
roll_nom	303.08288954	Nominal Roll [deg]
revision	3	Processing version of data
ontime	50126.999903589	Sum of GTIs [s]
livetime	49472.053746889	Livetime [s]
ontime3	50123.858943343	Sum of GTIs [s]
ontime6	50126.999903589	Sum of GTIs [s]
ontime7	50126.999903589	Sum of GTIs [s]
ontime8	50126.999903589	Sum of GTIs [s]
l2events	292427	Number of level 2 events



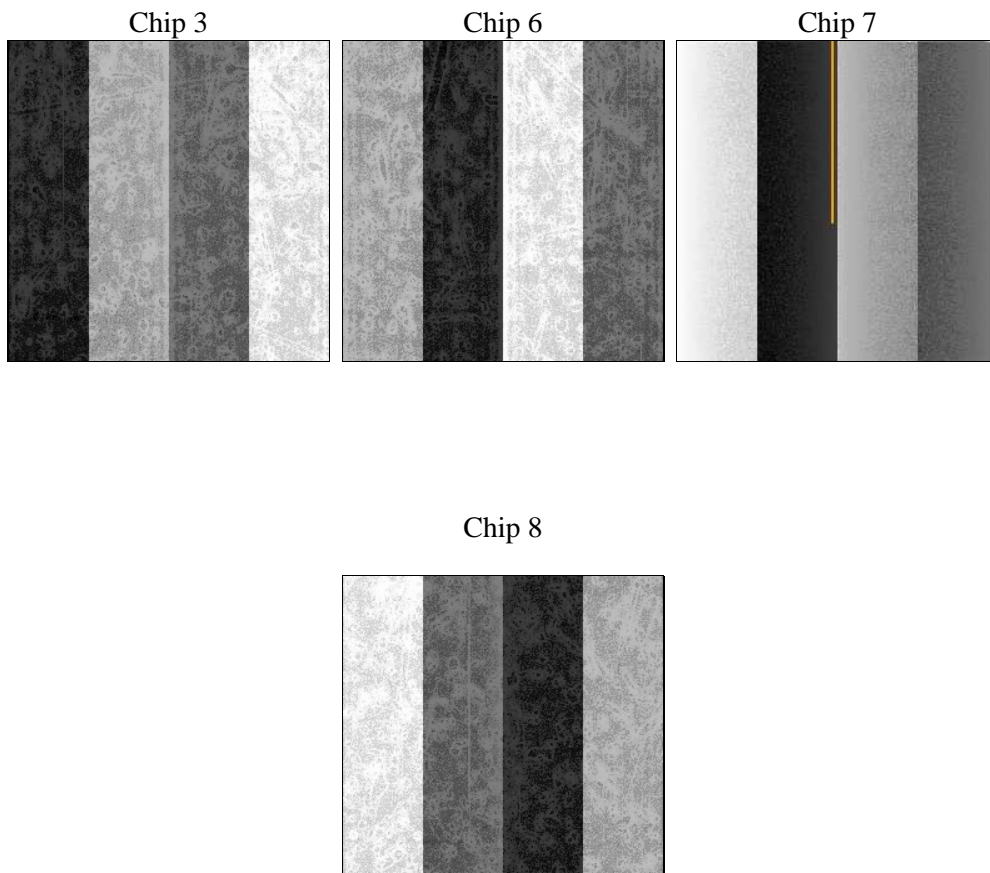
2 OBI

2.1 OBI

2.1.1 Images



2.1.2 Bias



2.1.3 Parameters

obi_num	1	Obi number	sched_exp_time	50000.000000	[s] Scheduled observation exposure time
ascdsver	8.4.5	Processing system revision	ontime	50126.999903589	Sum of GTIs [s]
caldsver	4.5.2	 	ontime3	50123.858943343	Sum of GTIs [s]
date	2012-11-04T18:49:35	Date and time of file creation	ontime6	50126.999903589	Sum of GTIs [s]
revision	3	Processing version of data	ontime7	50126.999903589	Sum of GTIs [s]
			ontime8	50126.999903589	Sum of GTIs [s]
			l1events	1464061	Number of level 1 events

2.1.4 Events

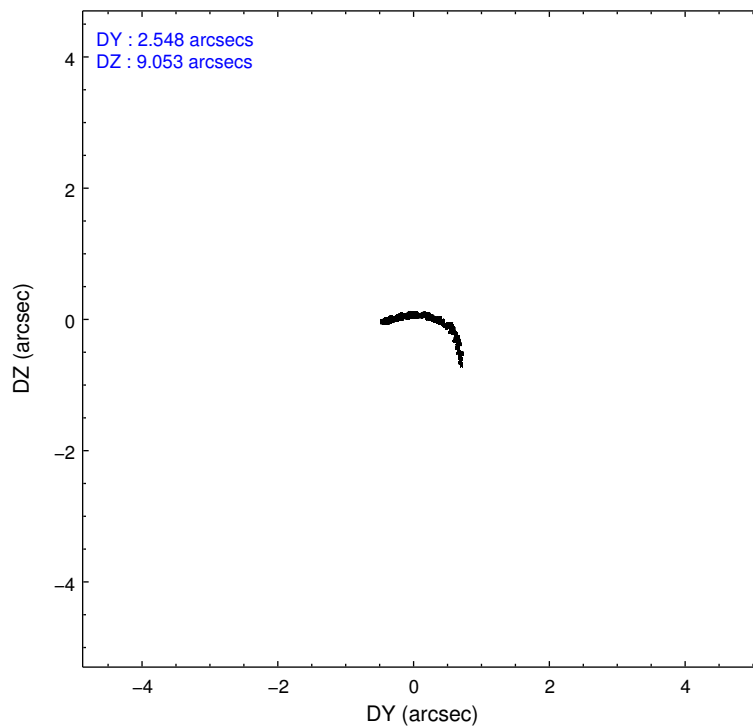
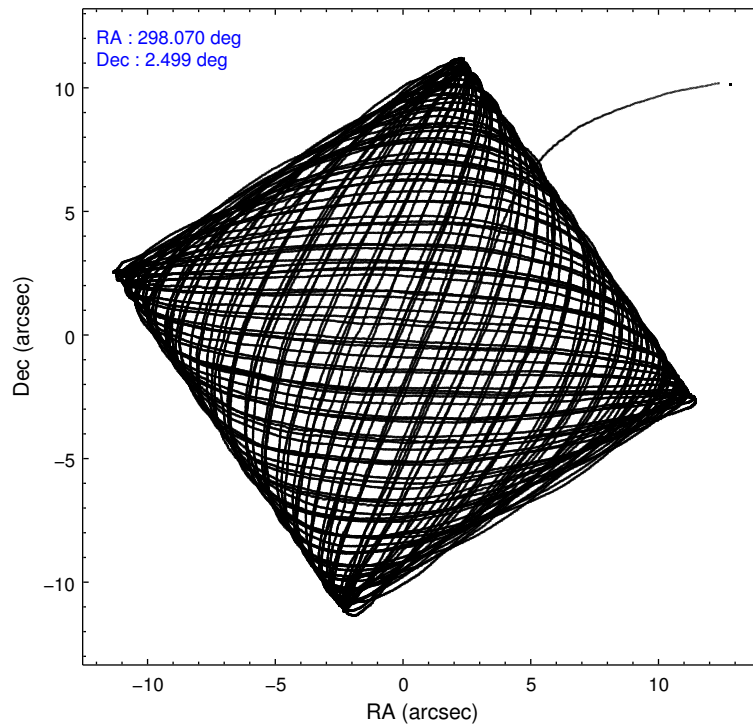
	ccd 3	ccd 6	ccd 7	ccd 8
level 1 events	311347	321350	433254	398110
rejected events	274316	282181	242867	315650
rejected %	88%	87%	56%	79%

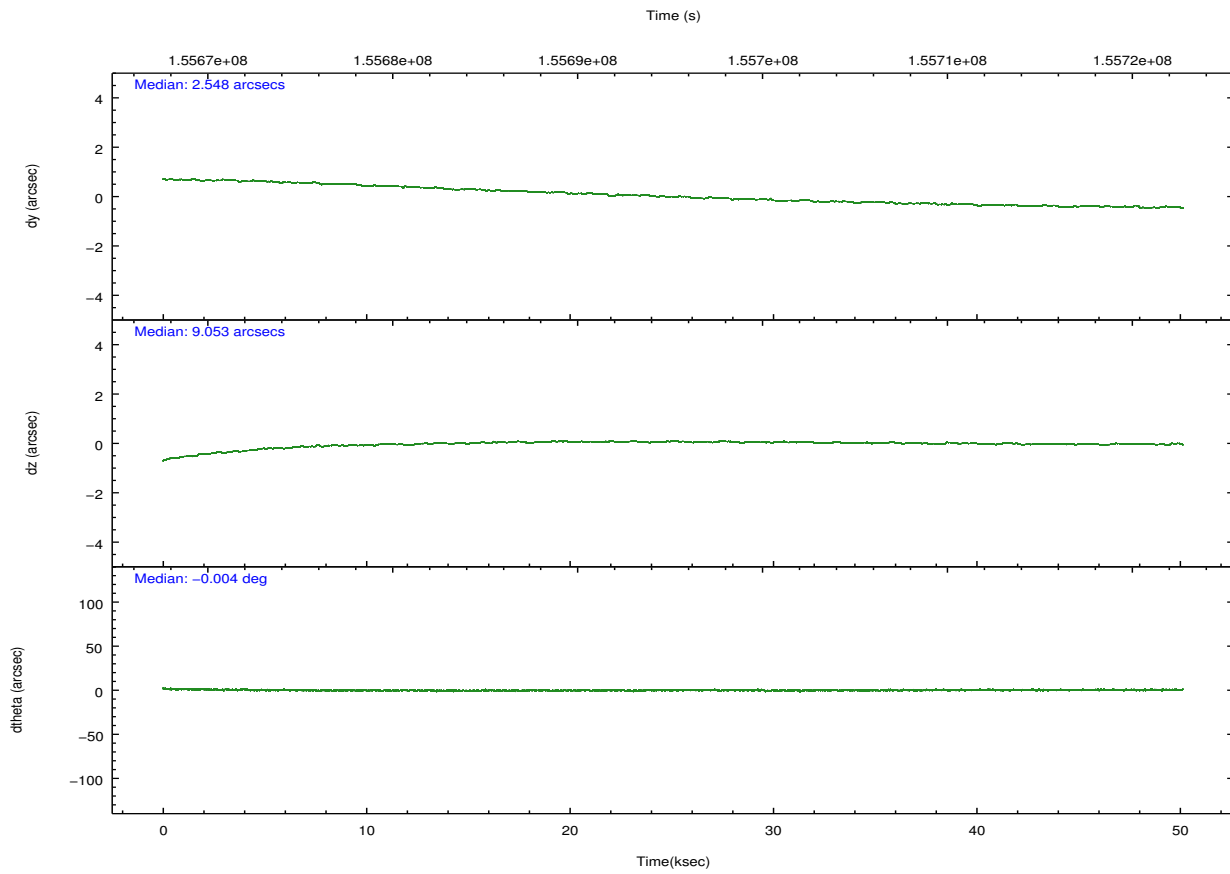
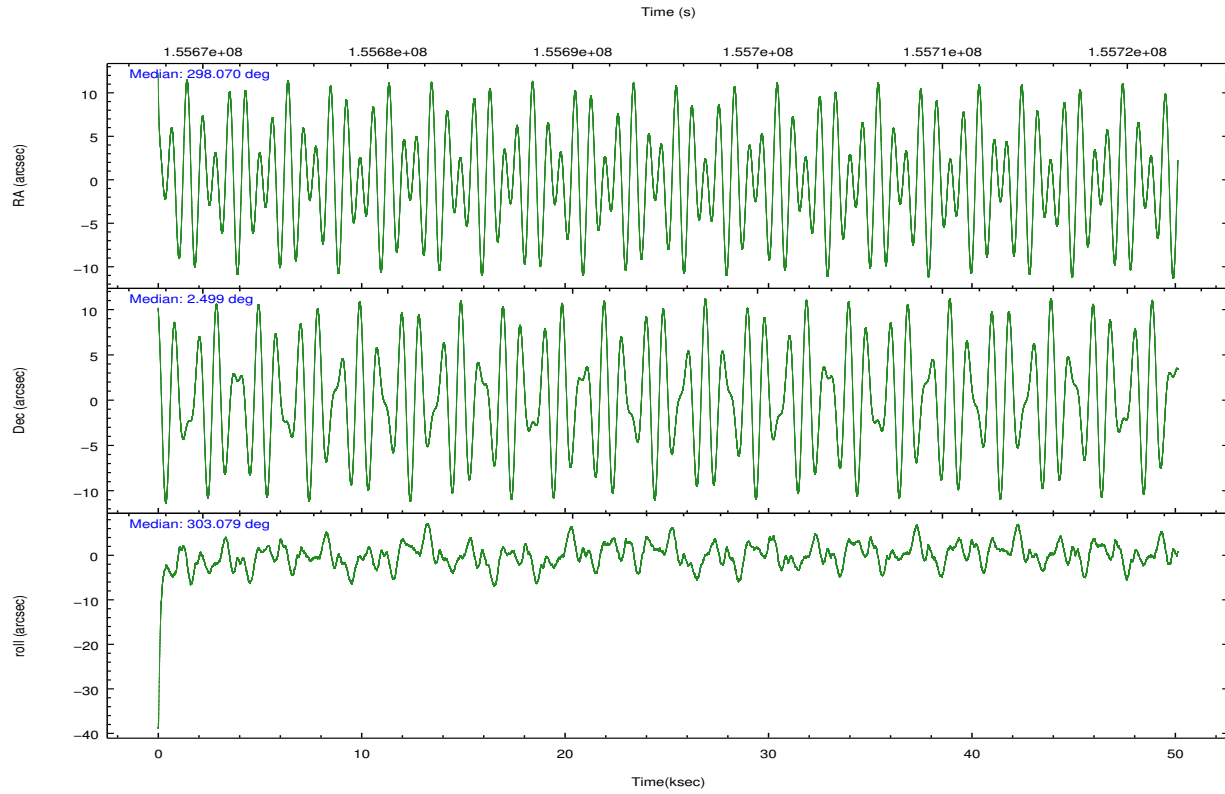
	ccd 3	ccd 6	ccd 7	ccd 8
grade 0 events	16979	16870	19069	26611
	5%	5%	4%	6%
grade 1 events	194	164	390	264
	0%	0%	0%	0%
grade 2 events	6804	7731	37657	18126
	2%	2%	8%	4%
grade 3 events	3636	3716	17065	8667
	1%	1%	3%	2%
grade 4 events	3654	3595	17116	8145
	1%	1%	3%	2%
grade 5 events	13257	14363	39174	18233
	4%	4%	9%	4%
grade 6 events	6195	7498	100775	21402
	1%	2%	23%	5%
grade 7 events	260628	267413	202008	296662
	83%	83%	46%	74%

2.2 Compared Parameters

Parameter	Planned	Actual	Parameter	Planned	Actual
Instrument	ACIS	ACIS	Obspar format version number	7	7
Detector	ACIS-3678	ACIS-3678	Obspar file type	PREDICTED	ACTUAL
Grating	NONE	NONE	Obspar update status	NONE	UPDATED
Data mode	FAINT	FAINT	Number of optional ACIS chips dropped	0	0
Observation mode	POINTING	POINTING	On-chip summing requested	N	N
[deg] Pointing RA	298.045985	298.0704348792107	Subarray requested	NONE	NONE
[deg] Pointing Dec	2.510870	2.498891172161343	Alternating exposures requested	N	N
[deg] Pointing Roll	302.927336	303.0828895399985	[s] Primary exposure time	0.000000	3.1
[mm] SIM focus pos	-0.684267	-0.6828225247311905			
[mm] SIM defocus	0	0.001444936568705701			
[mm] SIM translation stage pos	-190.132523	-190.1400660498719			
[mm] SIM translation stage offset	0	0.00754346686406393			
[s] Observation start time (MET)	155670222.184000	155669155.24223			
Observation start date	2002-12-07T17:42:38	2002-12-07T17:25:55			
[s] Observation end time (MET)	155720222.184000	155720892.63189			
Observation end date	2002-12-08T07:35:58	2002-12-08T07:48:12			
Read mode	TIMED	TIMED			

2.3 Aspect



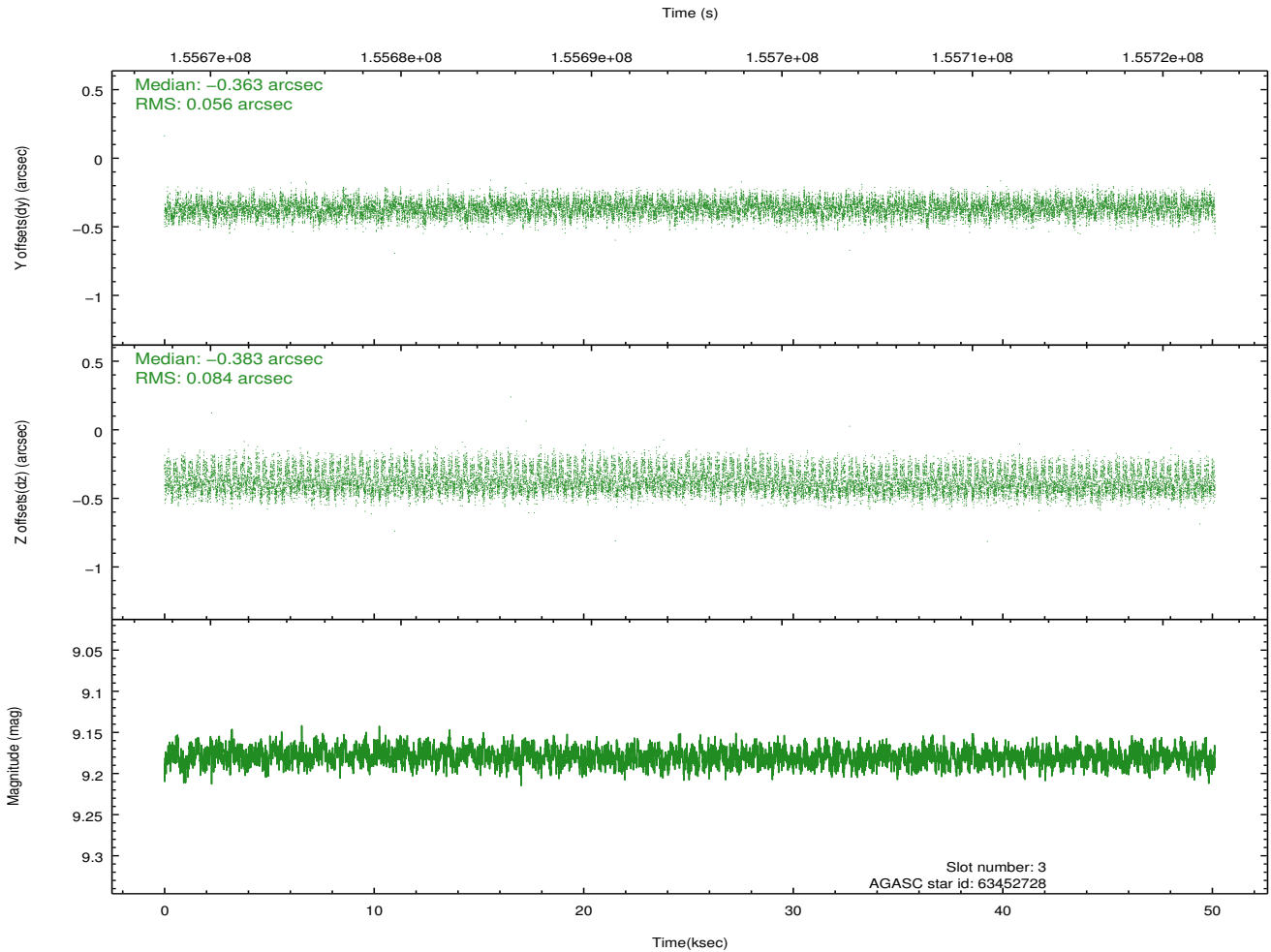
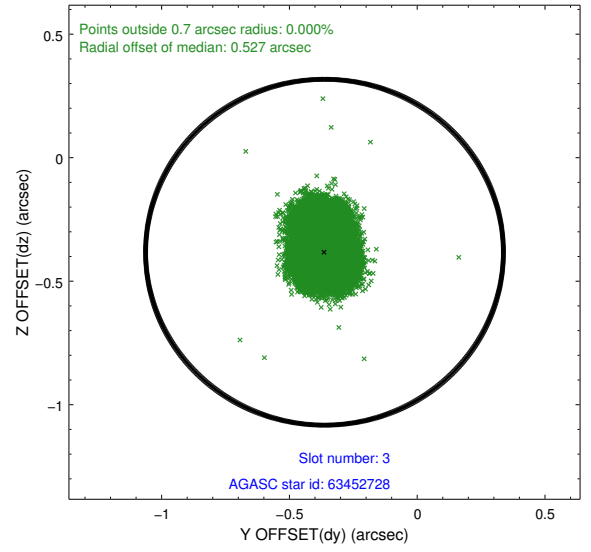
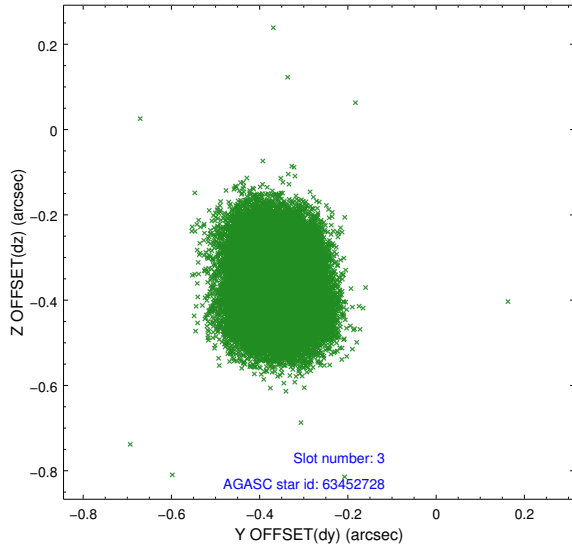


Slot Statistics

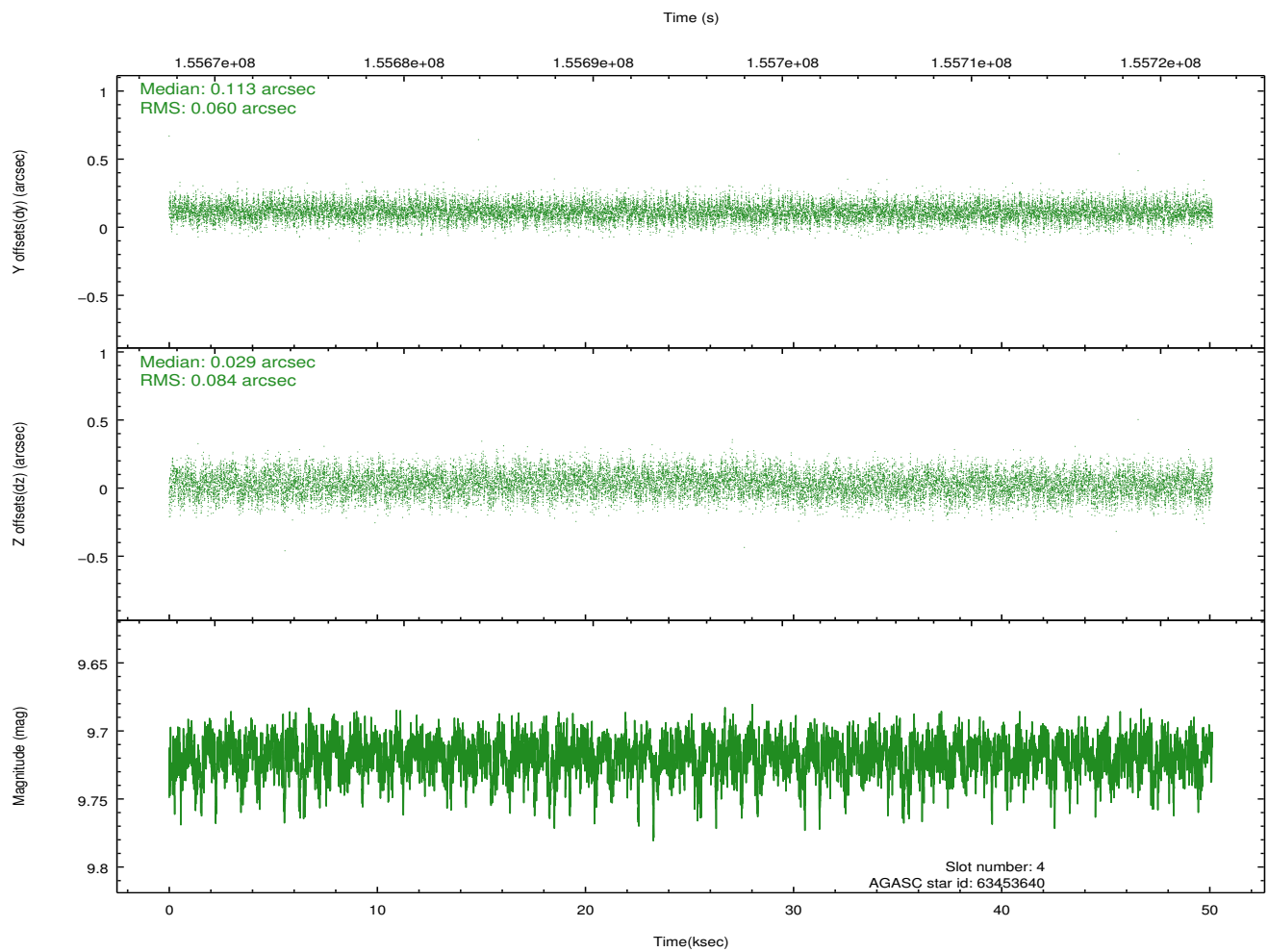
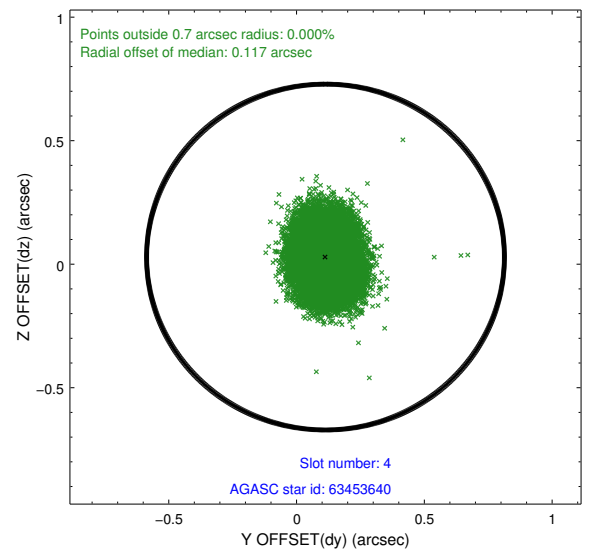
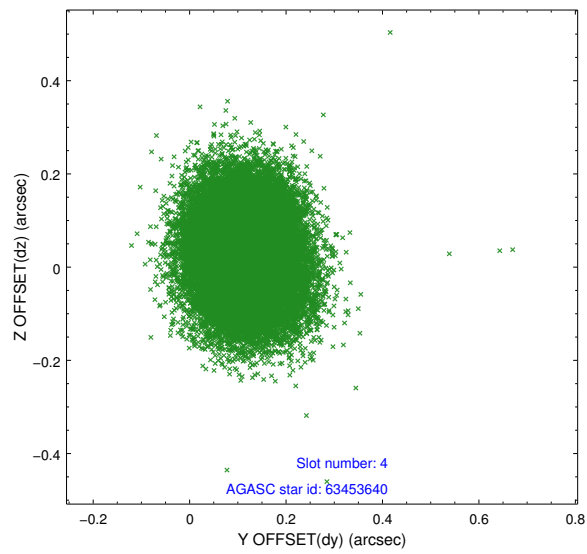
slot	status	id	mag	n_pts	med_dy	med_dz	dr1	dr2	ra	dec	mean_y	mean_z
0	FID	ACIS-S-2	7.10	12227	-0.029	-0.011	0.013	0.018	0.000000	0.000000	-755.25	-1730.24
1	FID	ACIS-S-4	7.20	12226	0.007	0.015	0.012	0.023	0.000000	0.000000	2158.06	178.29
2	FID	ACIS-S-5	7.24	12227	-0.006	0.002	0.013	0.025	0.000000	0.000000	-1808.10	171.92
3	GUIDE	63452728	9.18	24449	-0.363	-0.383	0.108	0.172	297.402432	2.584172	-1479.73	-1799.39
4	GUIDE	63453640	9.72	24444	0.113	0.029	0.110	0.178	297.397106	2.359818	-812.07	-2254.13
5	GUIDE	63575272	9.59	24440	0.076	0.153	0.121	0.195	298.400200	2.770435	-91.67	1577.45
6	GUIDE	63578768	8.92	24445	0.241	0.194	0.085	0.134	298.731461	2.440248	1553.69	1932.31
7	GUIDE	63570488	10.09	24437	-0.071	-0.001	0.160	0.259	298.270099	3.396021	-2236.69	2408.58

2.4 Star Slots

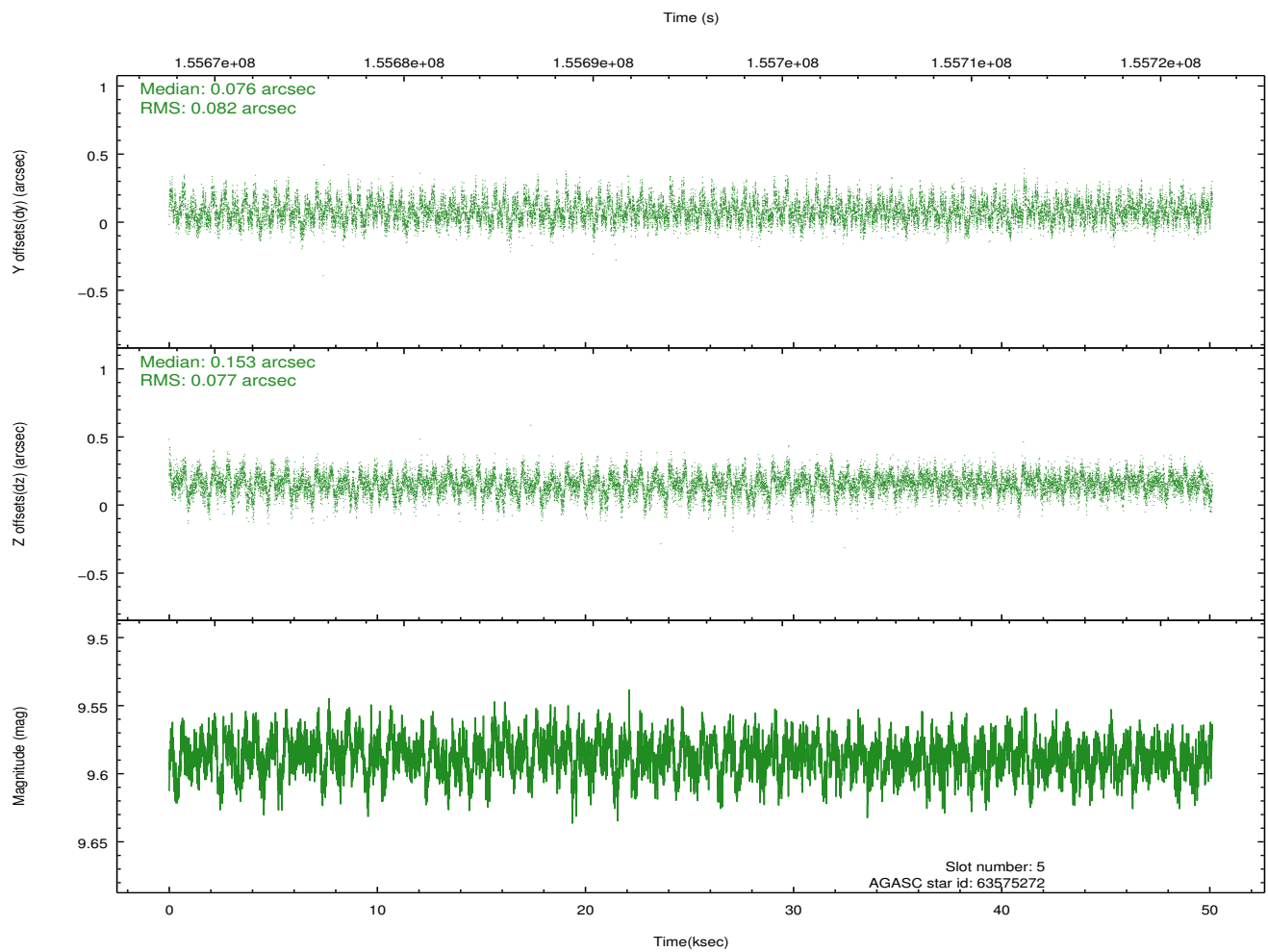
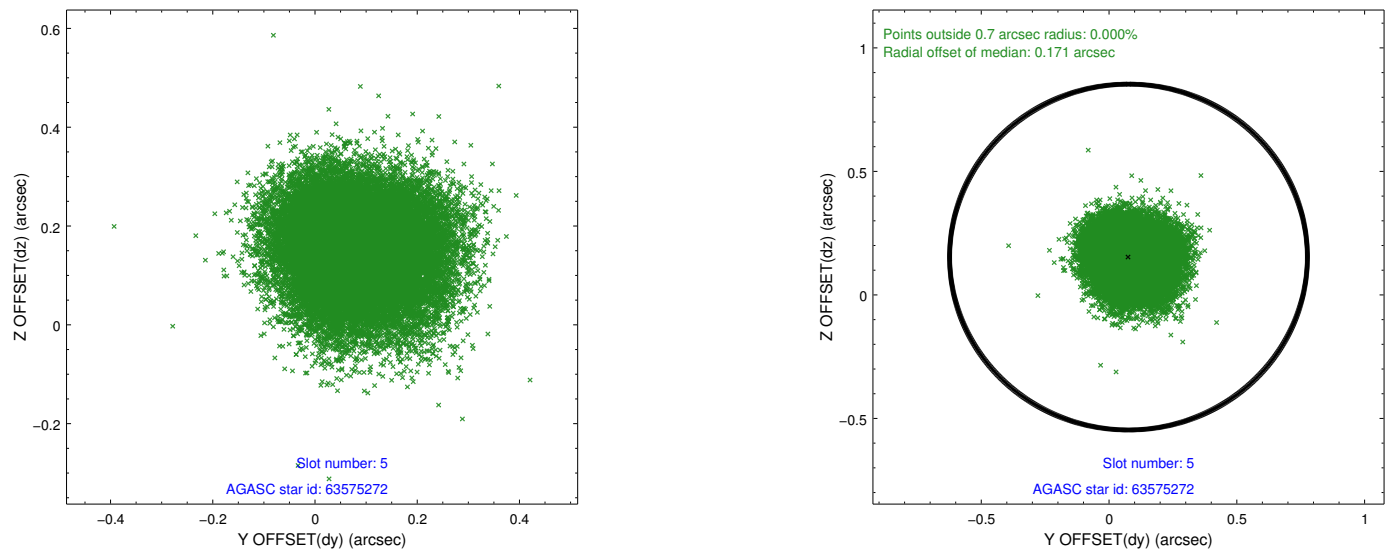
2.4.1 Slot 3



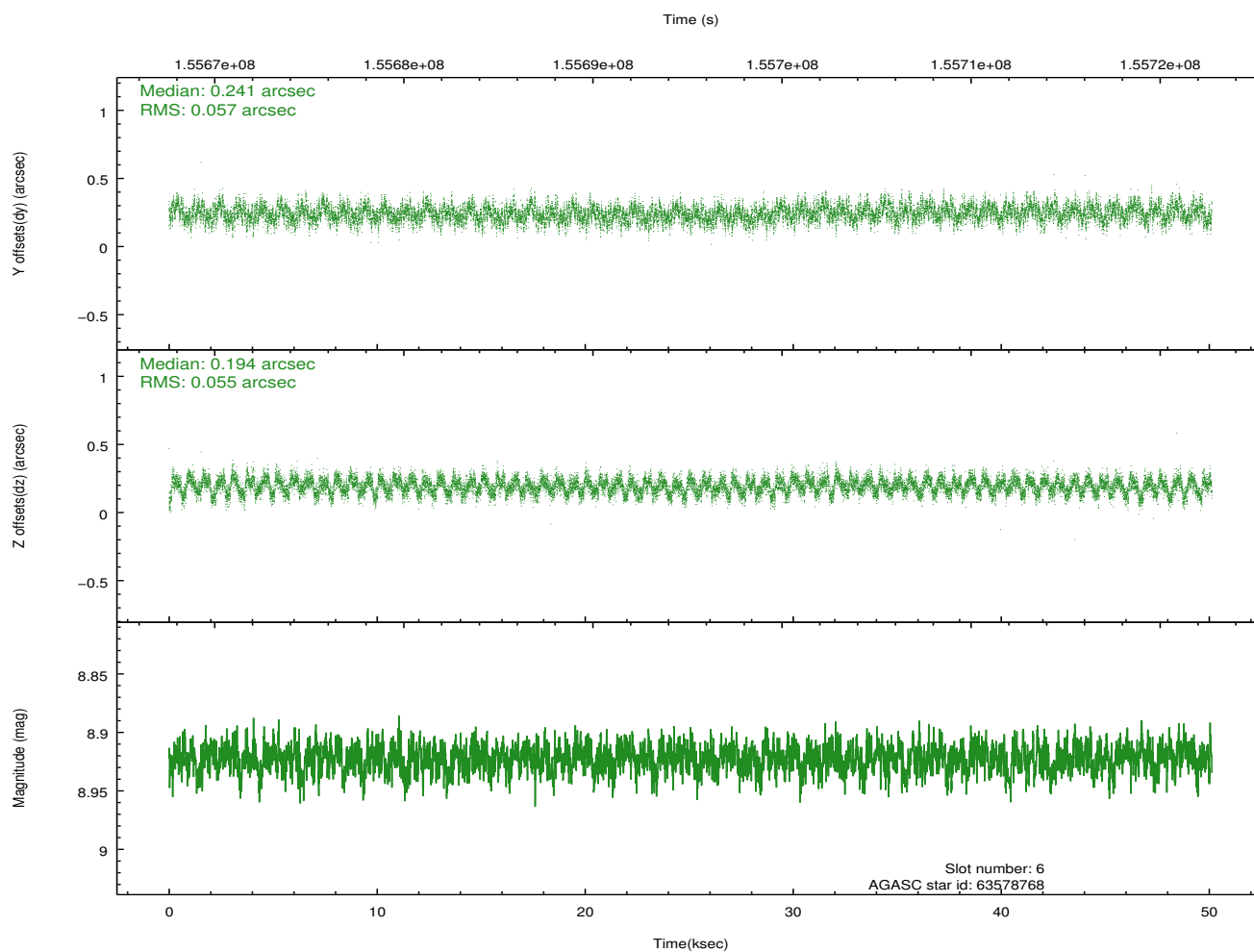
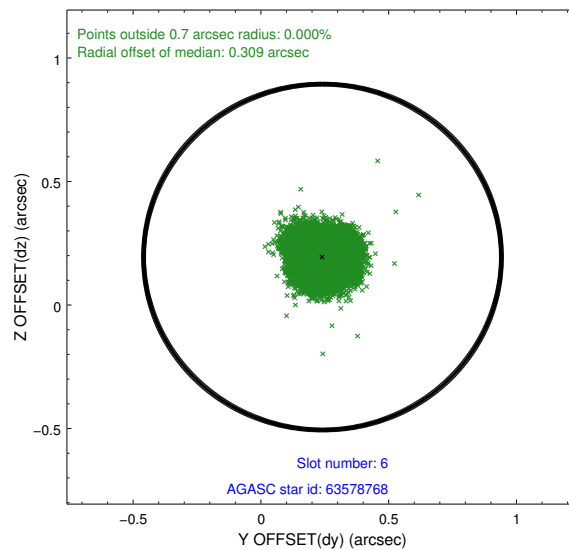
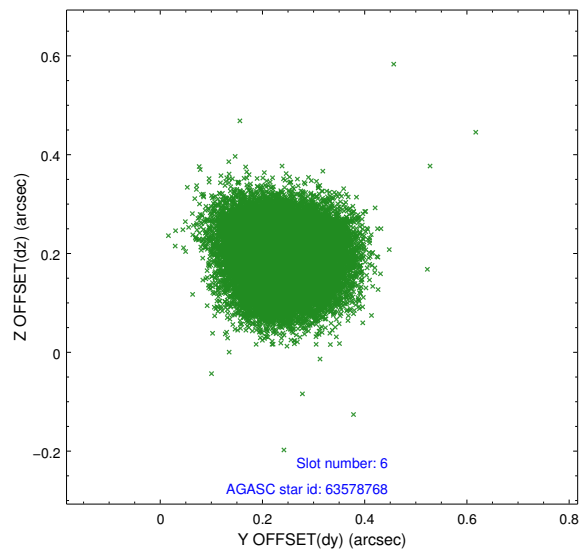
2.4.2 Slot 4



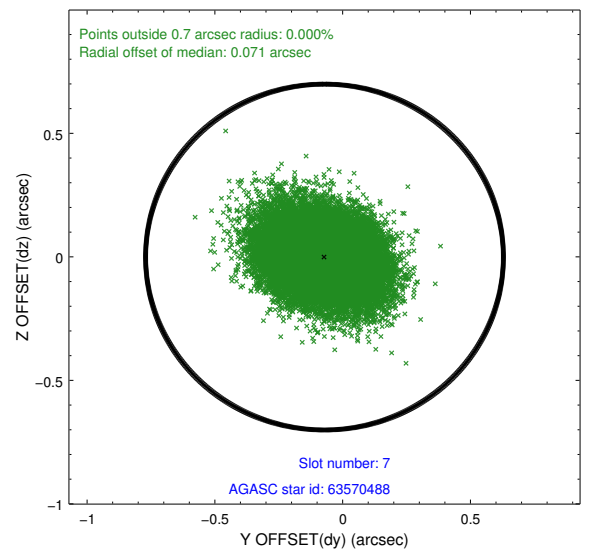
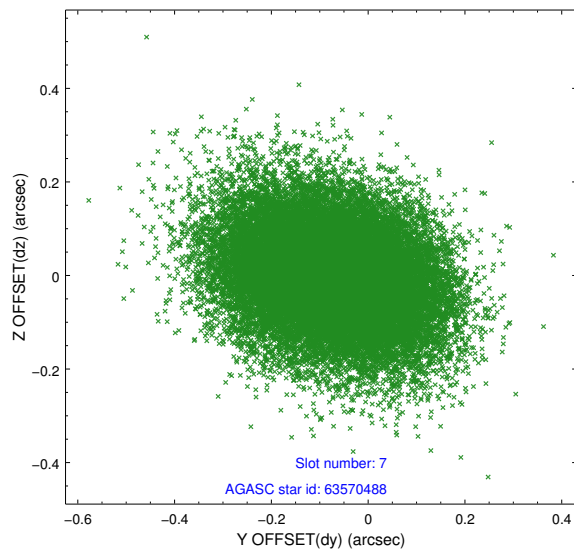
2.4.3 Slot 5



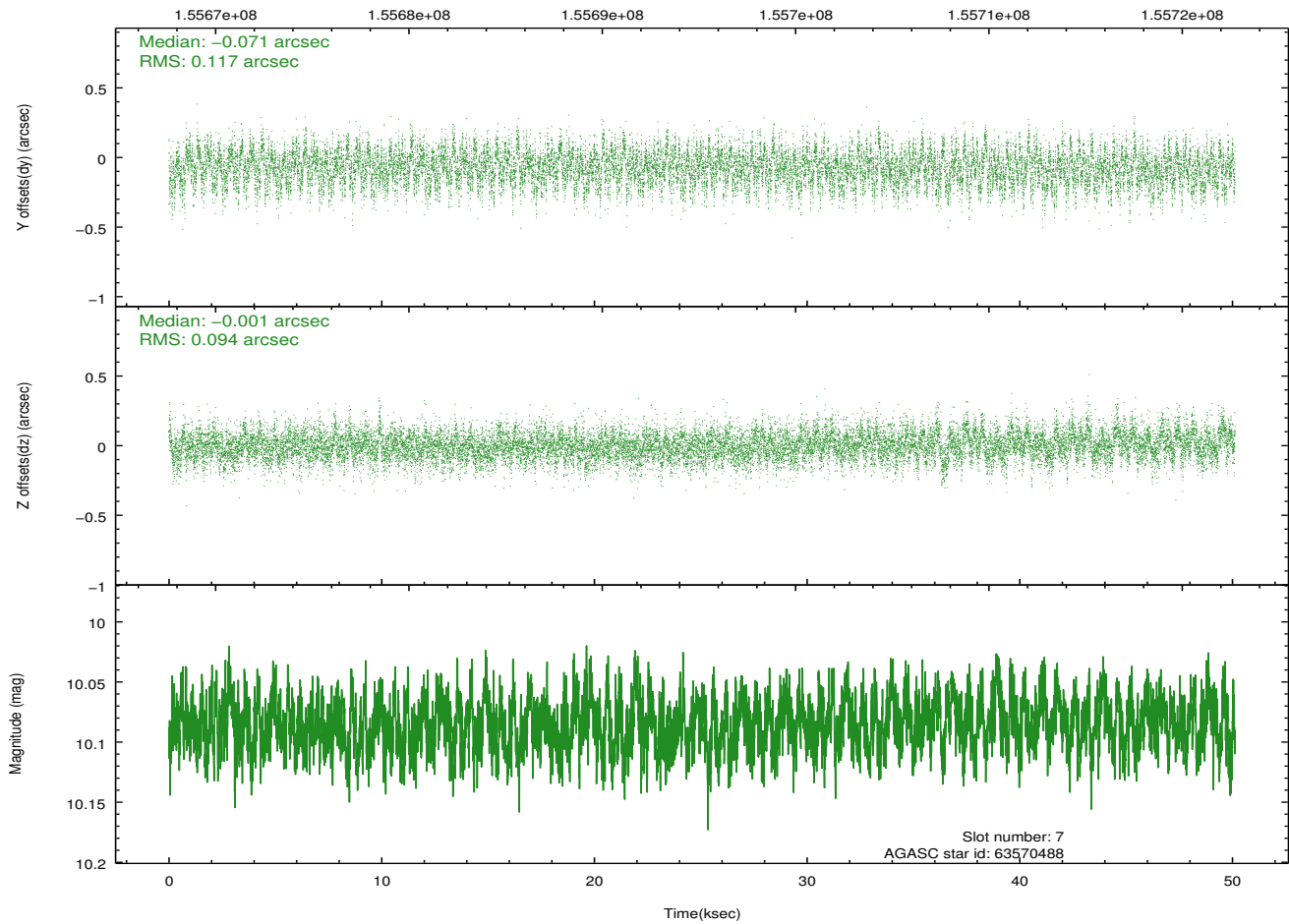
2.4.4 Slot 6



2.4.5 Slot 7

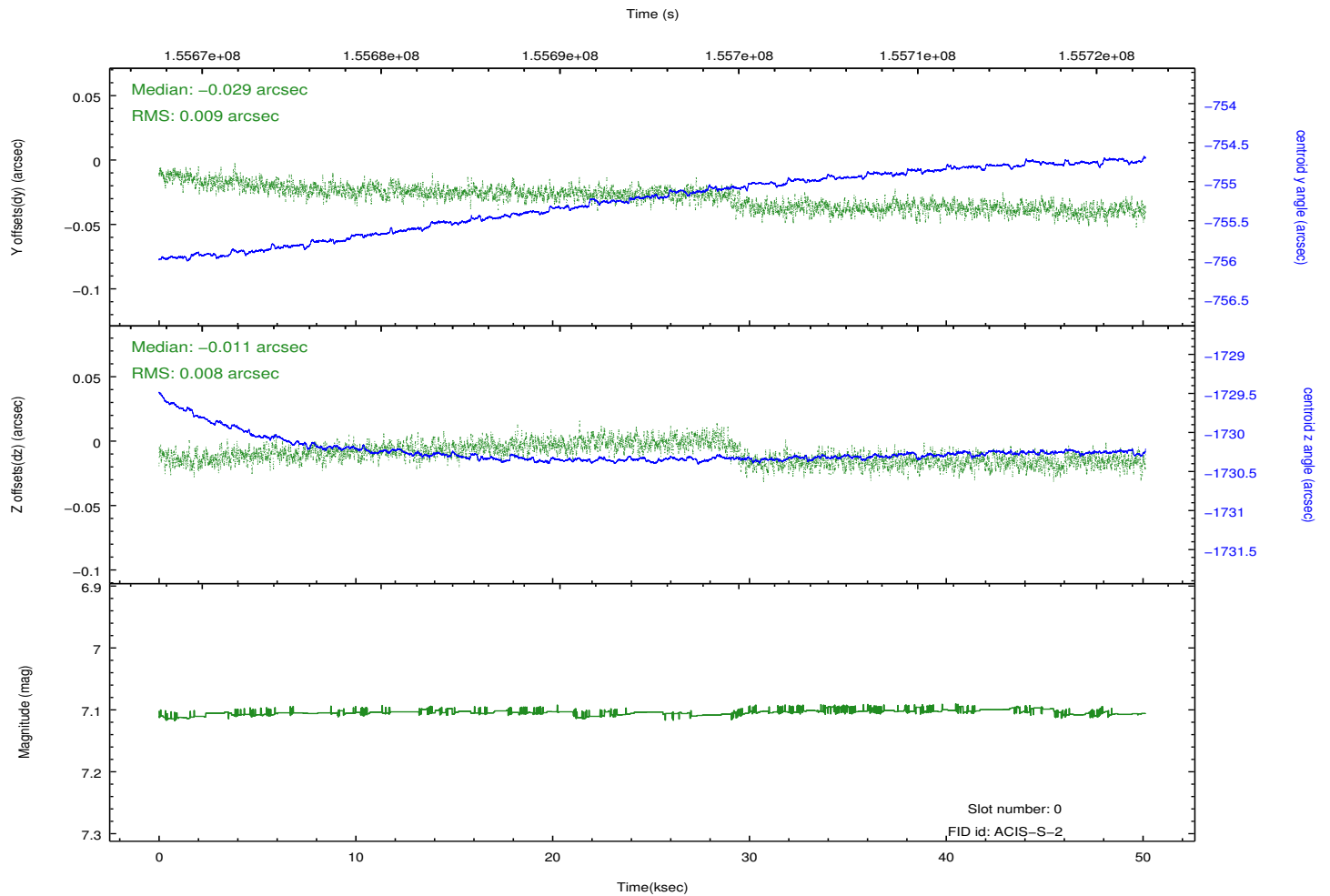
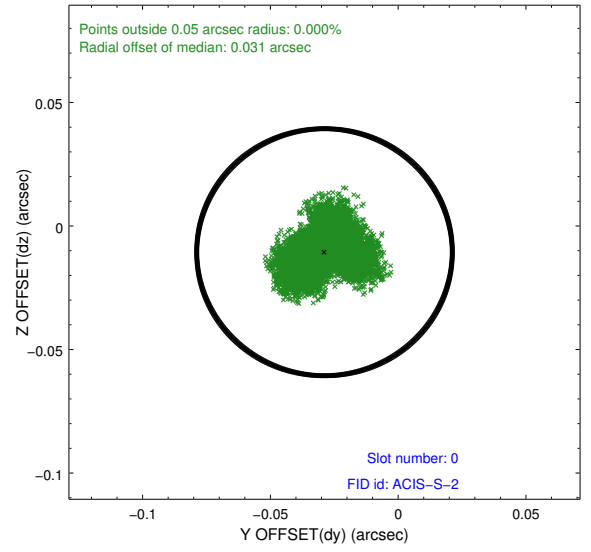
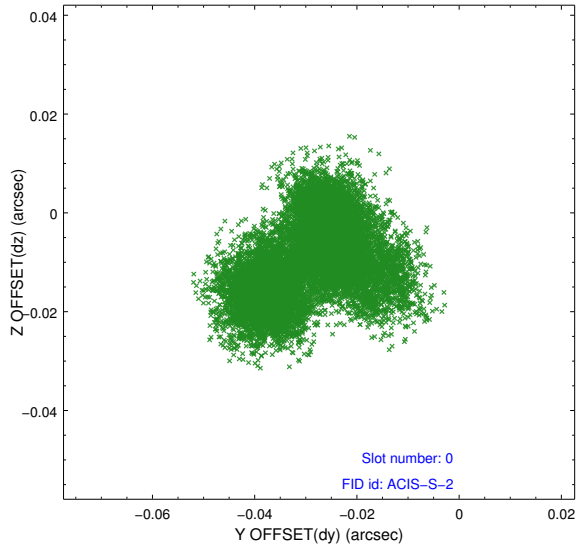


Time (s)

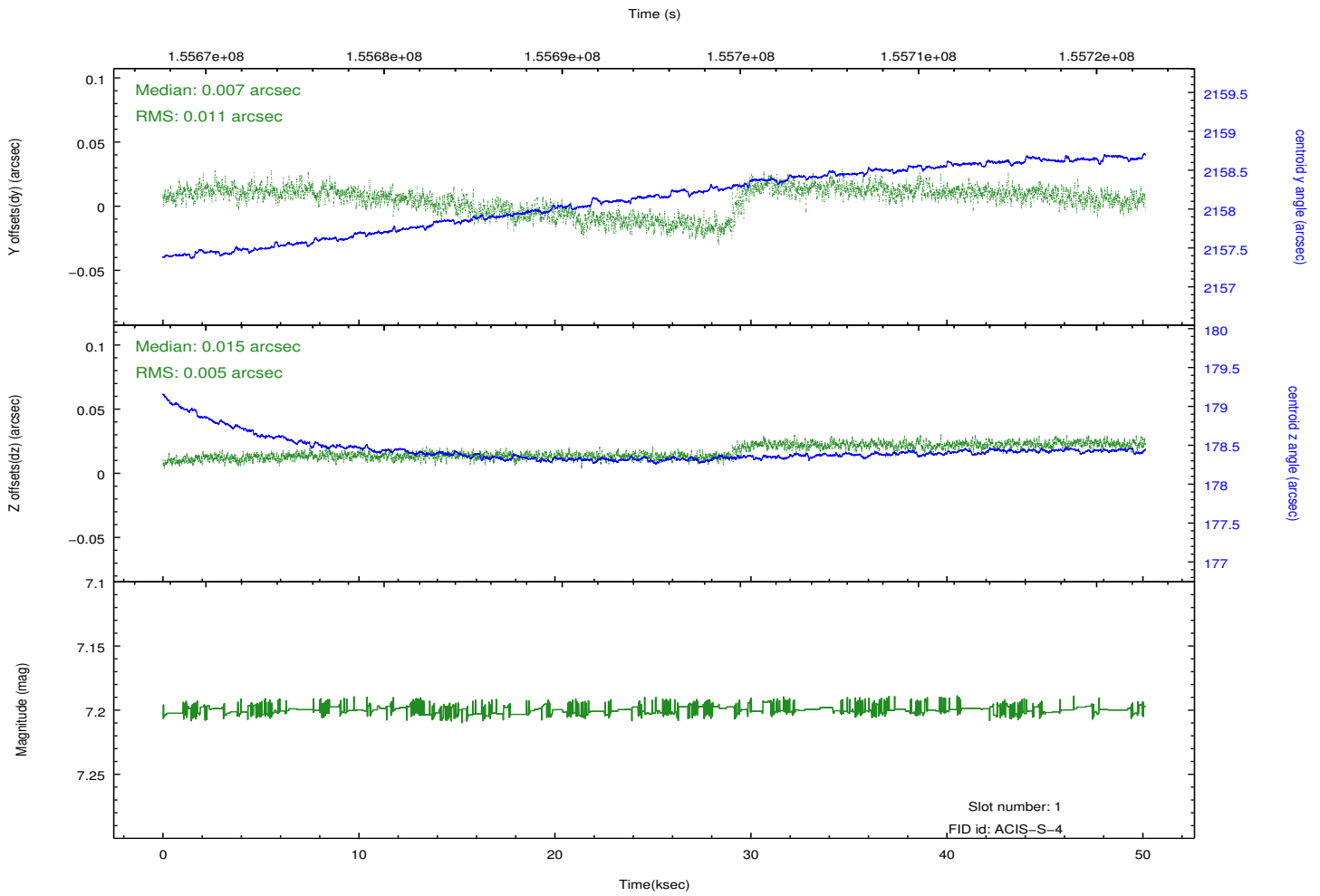
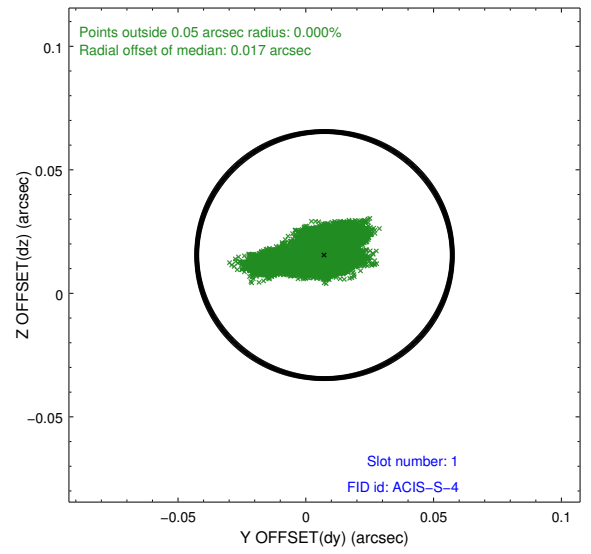
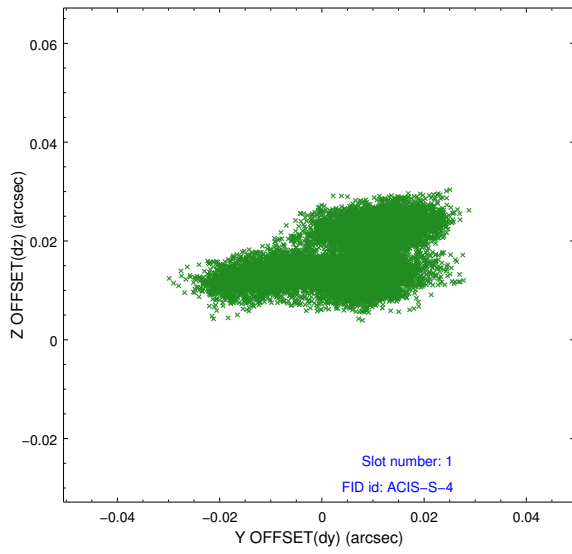


2.5 FID Slots

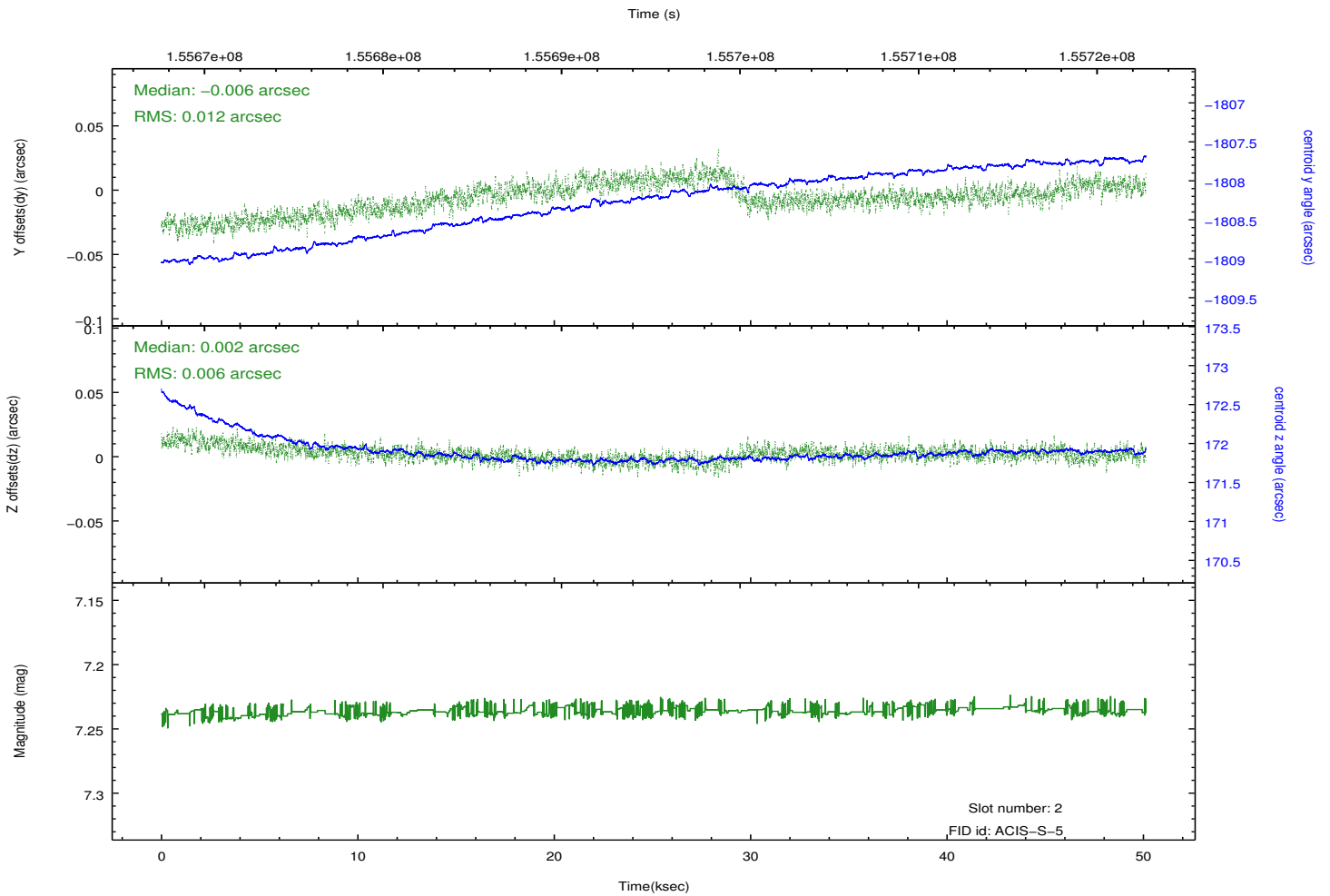
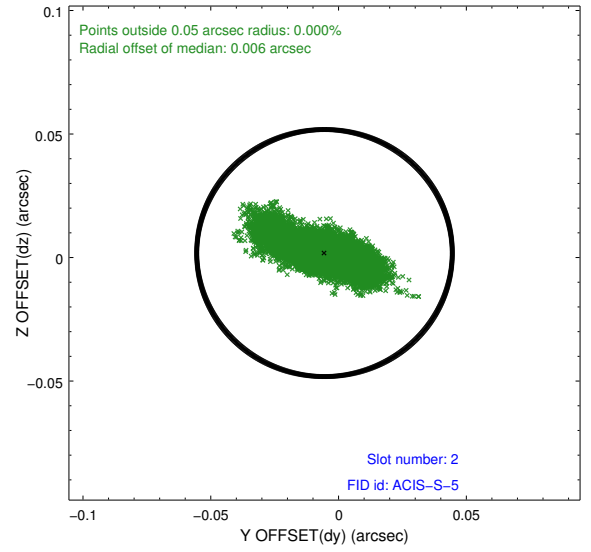
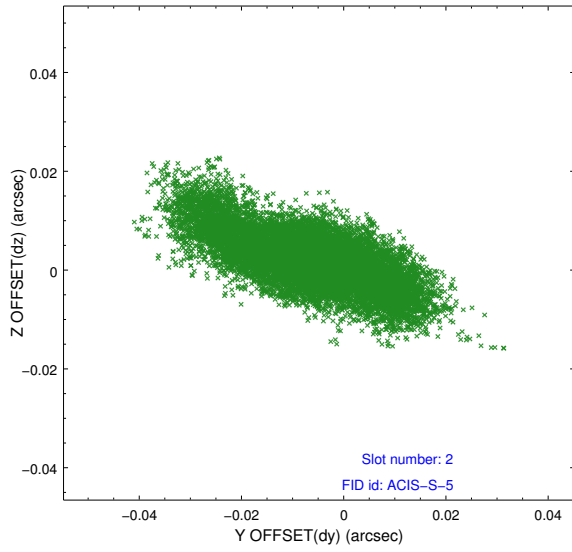
2.5.1 Slot 0



2.5.2 Slot 1



2.5.3 Slot 2



A Summary

A.1 Status

V&V Scientist	Jen Lauer
V&V Date (YYYY-MM-DD)	2012.11.29
V&V Edition	1
V&V Disposition and Status	OK
V&V Charge Time	50.127

A.2 Comments