

V&V Reference Report

L2 ASCDS Version : 8.4.5

Observation 3758 - L2 Version 3
Chandra X-Ray Center

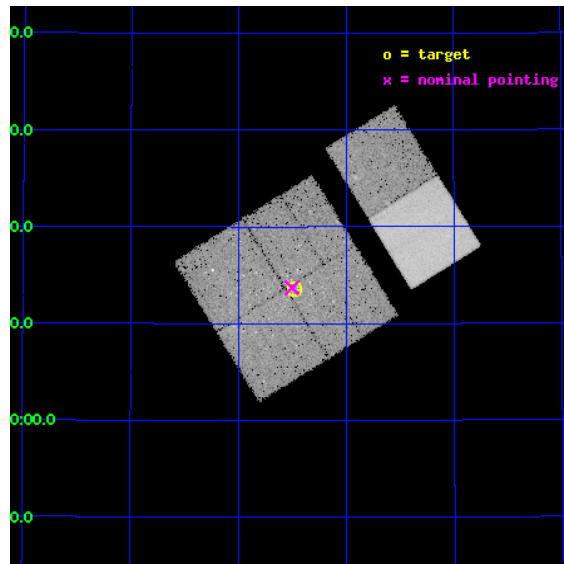
L2 Processing Date : Oct 24 2012

Contents

1	Front	2
2	OBI	3
2.1	OBI	3
2.1.1	Images	3
2.1.2	Bias	3
2.1.3	Parameters	4
2.1.4	Events	4
2.2	Compared Parameters	5
2.3	Aspect	6
2.4	Star Slots	9
2.4.1	Slot 3	9
2.4.2	Slot 4	10
2.4.3	Slot 5	11
2.4.4	Slot 6	12
2.4.5	Slot 7	13
2.5	FID Slots	14
2.5.1	Slot 0	14
2.5.2	Slot 1	15
2.5.3	Slot 2	16
A	Summary	17
A.1	Status	17
A.2	Comments	17

1 Front

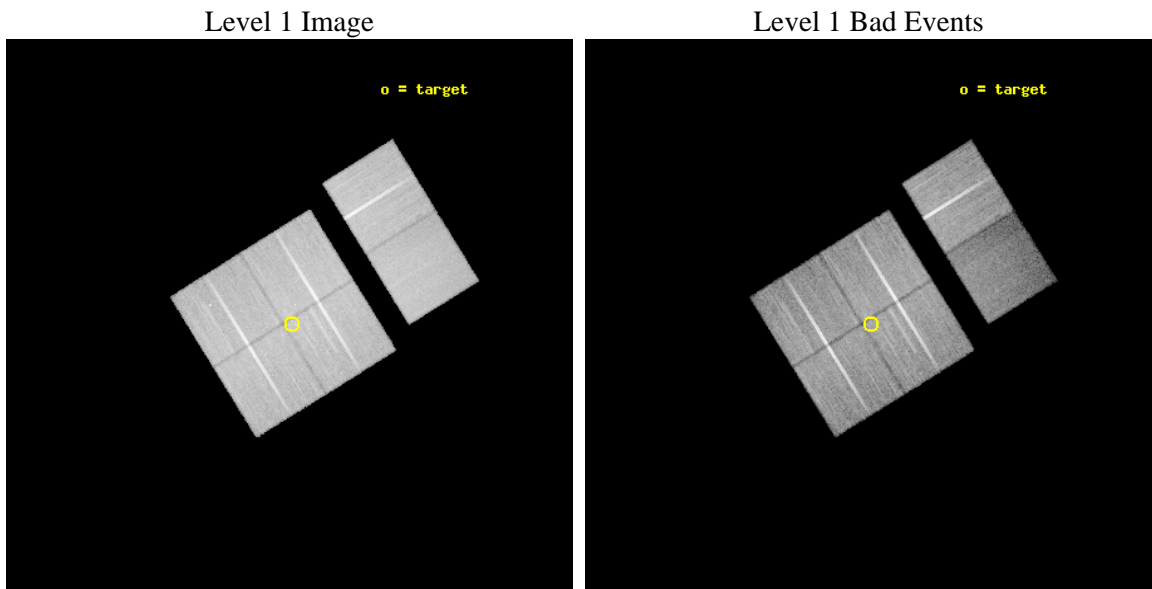
seq_num	200228	Sequence number
obs_id	3758	Observation id
title	X-RAY EMISSION FROM MASSIVE PROTO-STARS	Proposal title
observer	Dr. Peter Hofner	Principal investigator
object	IRAS 20126+4104	Source name
dtycycle	0	
cycle	P	events from which exps? Prim/Second/Both
ra_targ	303.621079	Observer's specified target RA [deg]
dec_targ	41.225694	Observer's specified target Dec [deg]
ra_nom	303.626109872	Nominal RA [deg]
dec_nom	41.228348992447	Nominal Dec [deg]
roll_nom	58.189815908836	Nominal Roll [deg]
revision	3	Processing version of data
ontime	39359.738438487	Sum of GTIs [s]
livetime	38861.34173079	Livetime [s]
ontime0	39359.615308493	Sum of GTIs [s]
ontime1	39362.897318751	Sum of GTIs [s]
ontime2	39356.456408322	Sum of GTIs [s]
ontime3	39359.738438487	Sum of GTIs [s]
ontime6	39359.82050851	Sum of GTIs [s]
ontime7	39359.779468477	Sum of GTIs [s]
l2events	182330	Number of level 2 events



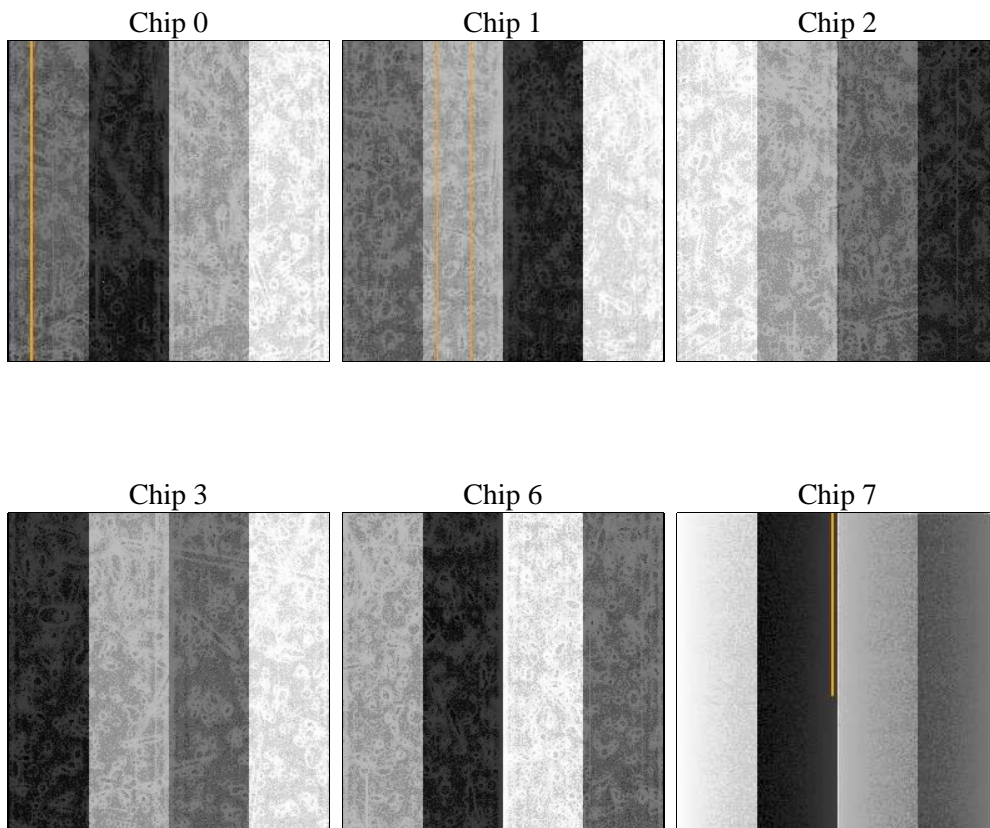
2 OBI

2.1 OBI

2.1.1 Images



2.1.2 Bias



2.1.3 Parameters

obi_num	0	Obi number	sched_exp_time	39400.000000	[s] Scheduled observation exposure time
ascdsver	8.4.5	Processing system revision	ontime	39359.738438487	Sum of GTIs [s]
caldbver	4.5.2	 	ontime0	39359.615308493	Sum of GTIs [s]
date	2012-10-24T14:20:57	Date and time of file creation	ontime1	39362.897318751	Sum of GTIs [s]
revision	3	Processing version of data	ontime2	39356.456408322	Sum of GTIs [s]
			ontime3	39359.738438487	Sum of GTIs [s]
			ontime6	39359.82050851	Sum of GTIs [s]
			ontime7	39359.779468477	Sum of GTIs [s]
			l1events	1185486	Number of level 1 events

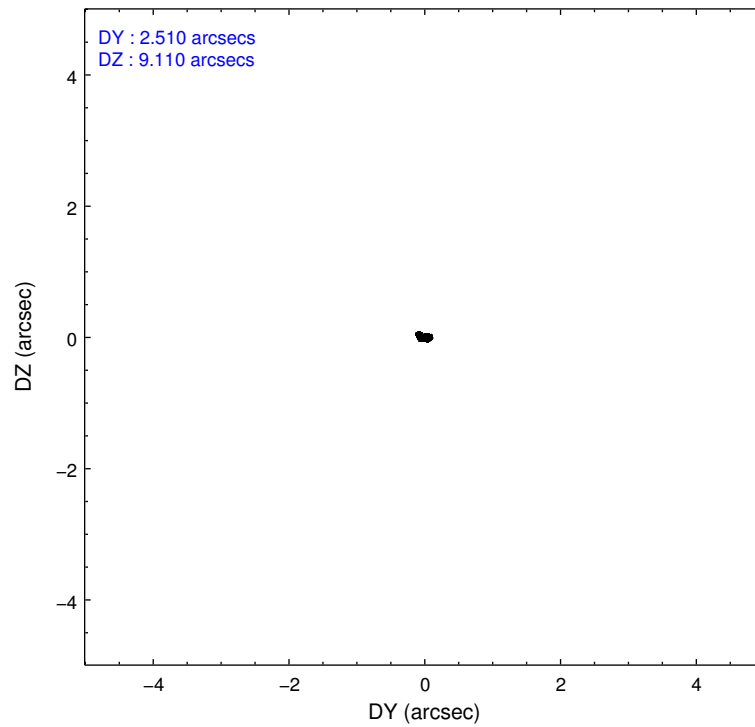
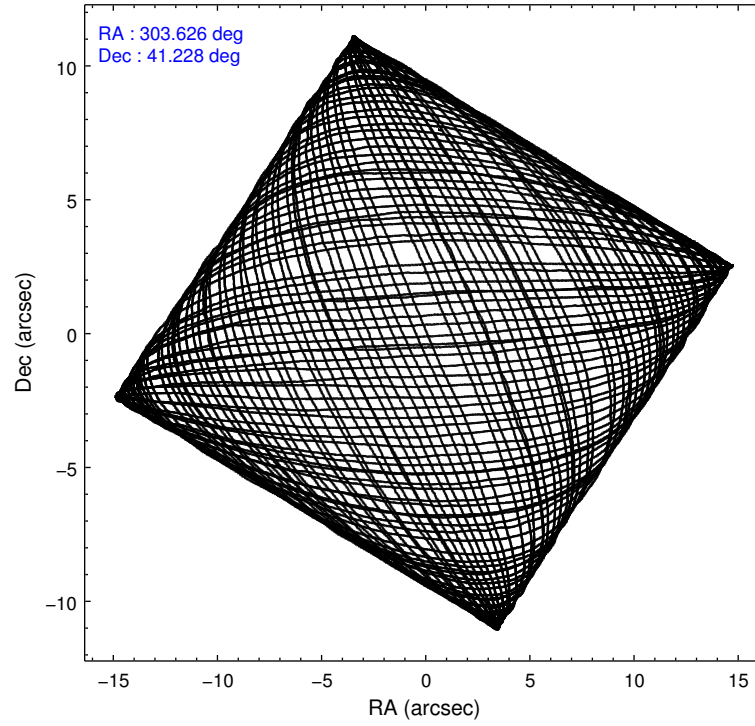
2.1.4 Events

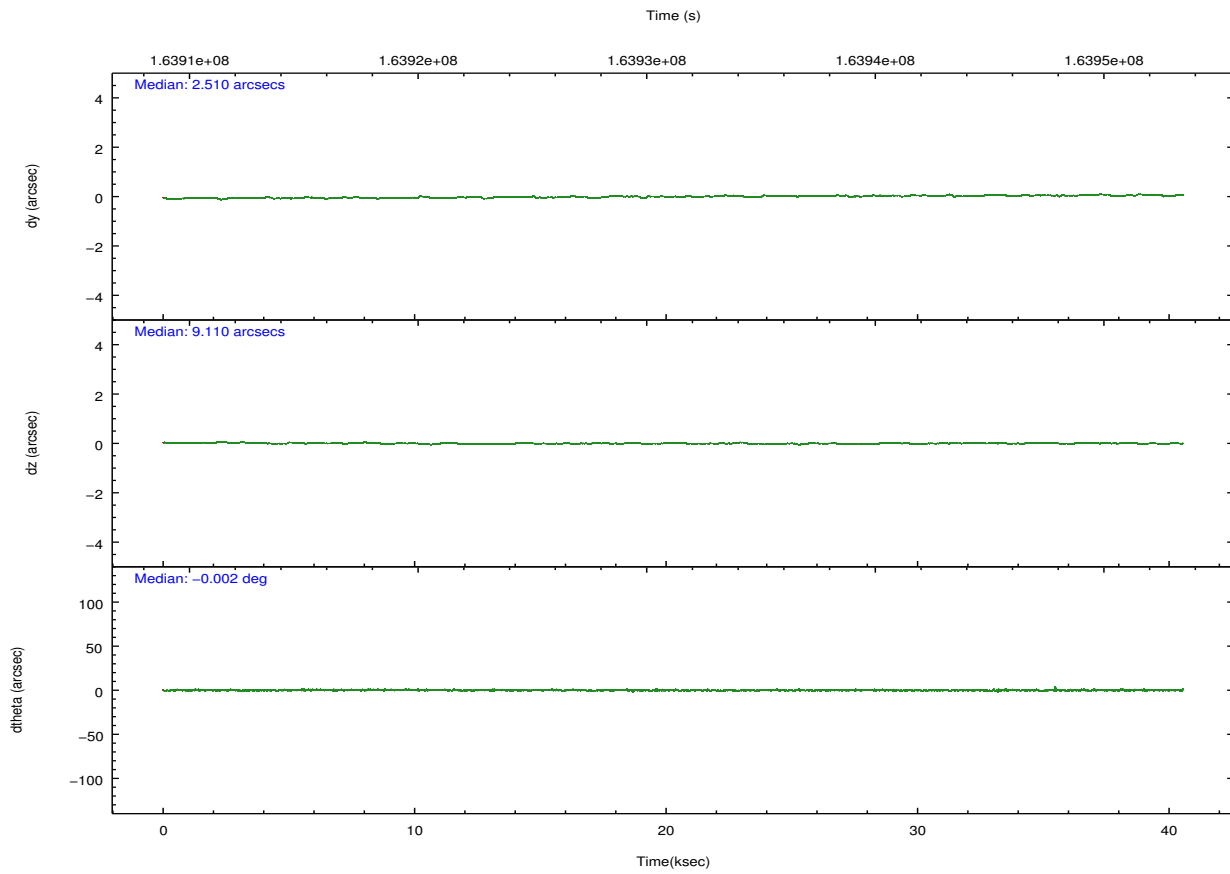
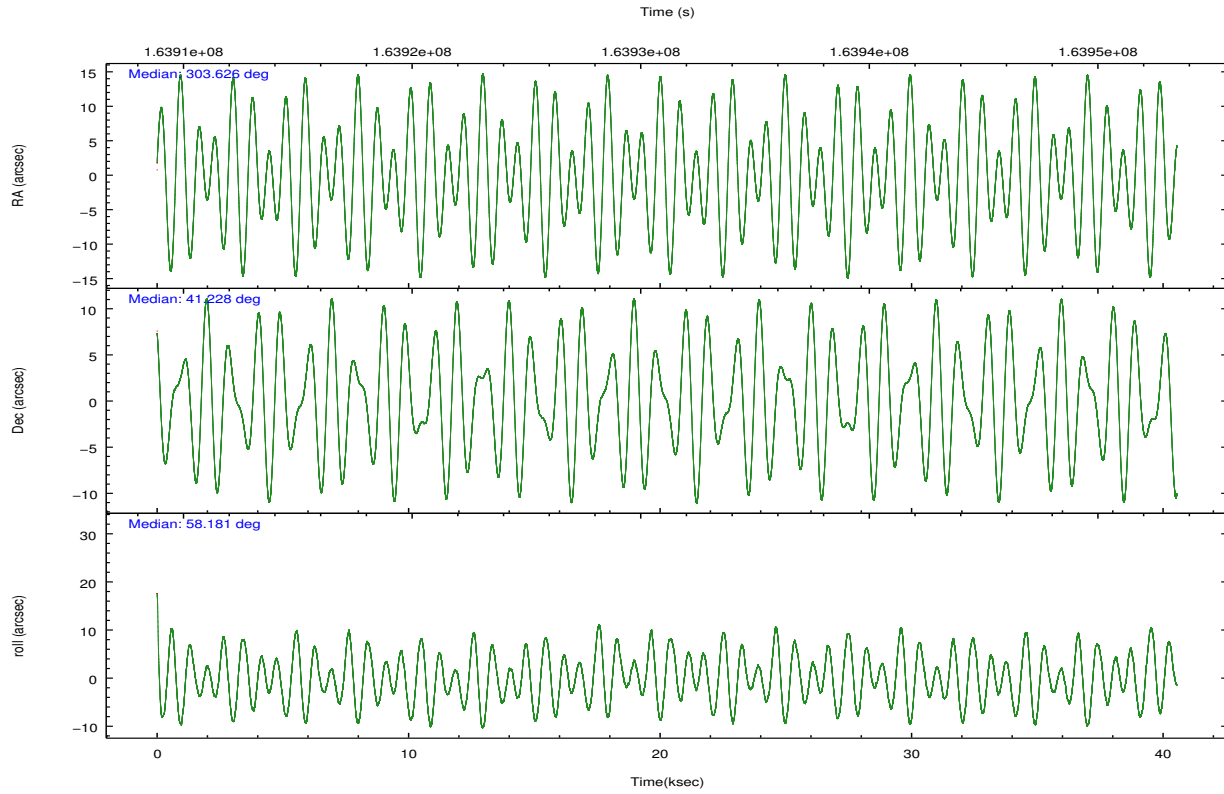
	ccd 0	ccd 1	ccd 2	ccd 3	ccd 6	ccd 7		ccd 0	ccd 1	ccd 2	ccd 3	ccd 6	ccd 7
level 1 events	190108	189067	214891	204678	206587	180155	grade 0 events	11551	11265	10277	10364	7830	8817
rejected events	165429	164376	192158	182419	185943	91169		6%	5%	4%	5%	3%	4%
rejected %	87%	86%	89%	89%	90%	50%	grade 1 events	94	95	120	126	96	199
								0%	0%	0%	0%	0%	0%
							grade 2 events	4946	4595	4676	4003	4301	18474
								2%	2%	2%	1%	2%	10%
							grade 3 events	2416	2446	2305	2225	2287	8716
								1%	1%	1%	1%	1%	4%
							grade 4 events	2276	2427	2196	2227	2246	8773
								1%	1%	1%	1%	1%	4%
							grade 5 events	5668	6088	5298	6367	6585	19661
								2%	3%	2%	3%	3%	10%
							grade 6 events	3496	3959	3288	3445	3981	44217
								1%	2%	1%	1%	1%	24%
							grade 7 events	159661	158192	186731	175921	179261	71298
								83%	83%	86%	85%	86%	39%

2.2 Compared Parameters

Parameter	Planned	Actual	Parameter	Planned	Actual
Instrument	ACIS	ACIS	Obspar format version number	7	7
Detector	ACIS-012367	ACIS-012367	Obspar file type	PREDICTED	ACTUAL
Grating	NONE	NONE	Obspar update status	NONE	UPDATED
Data mode	VFAINT	VFAINT	Number of optional ACIS chips dropped	0	0
Observation mode	POINTING	POINTING	On-chip summing requested	N	N
[deg] Pointing RA	303.625114	303.6261098719993	Subarray requested	NONE	NONE
[deg] Pointing Dec	41.200994	41.22834899244734	Alternating exposures requested	N	N
[deg] Pointing Roll	57.981784	58.1898159088364	[s] Primary exposure time	0.000000	3.2
[mm] SIM focus pos	-0.782348	-0.7809083437167272			
[mm] SIM defocus	0	0.001439871863259334			
[mm] SIM translation stage pos	-233.592463	-233.5874344608287			
[mm] SIM translation stage offset	0	-0.005018542100998502			
[s] Observation start time (MET)	163912031.184000	163910589.16257			
Observation start date	2003-03-13T03:06:07	2003-03-13T02:43:09			
[s] Observation end time (MET)	163951431.184000	163951830.5518			
Observation end date	2003-03-13T14:02:47	2003-03-13T14:10:30			
Read mode	TIMED	TIMED			

2.3 Aspect



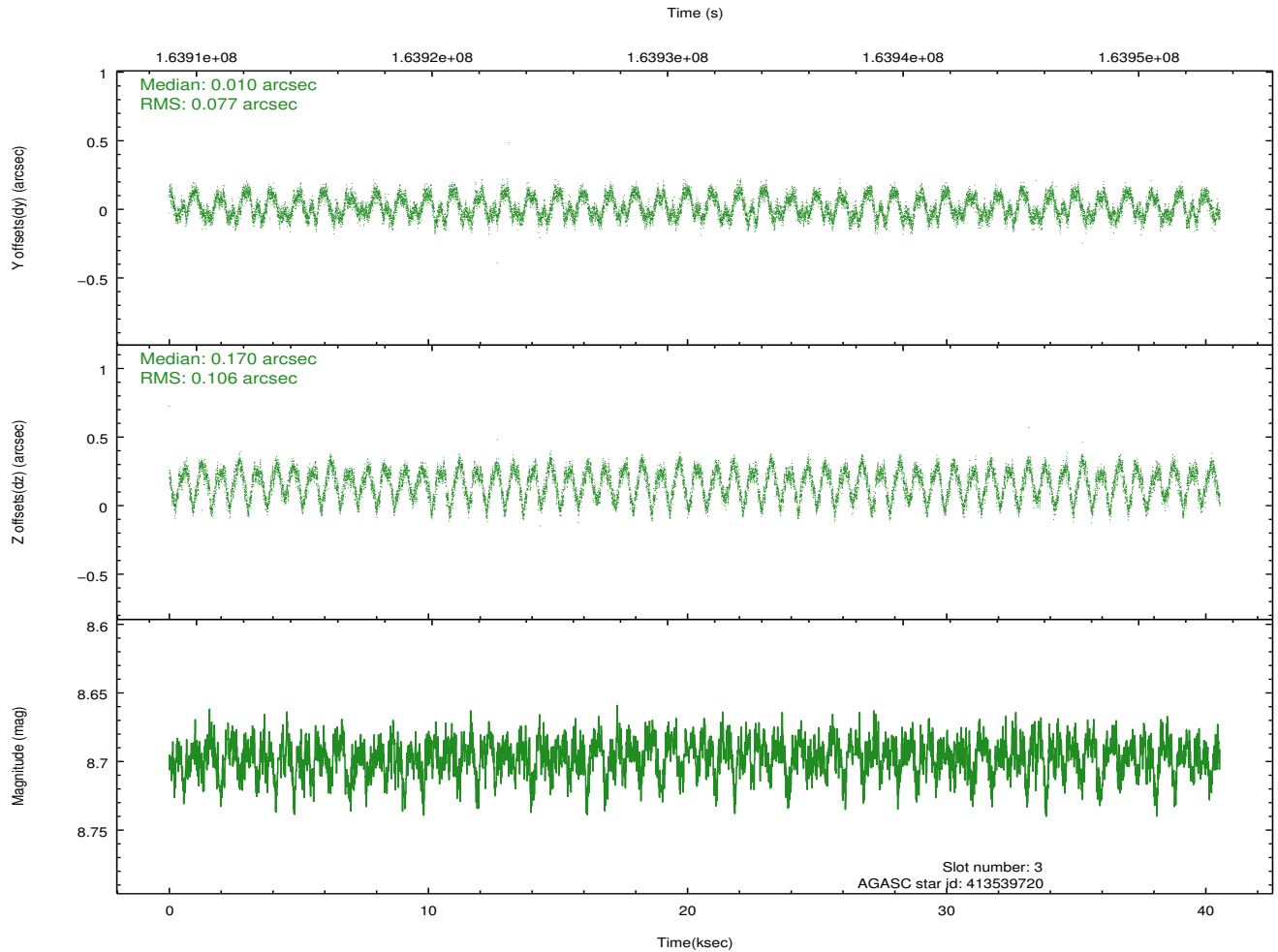
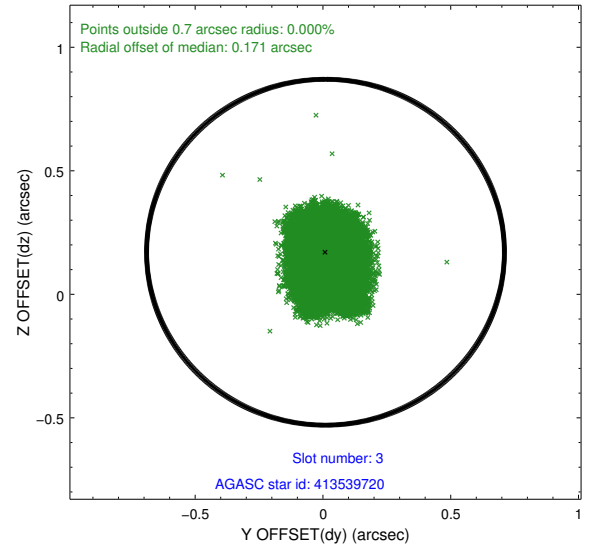
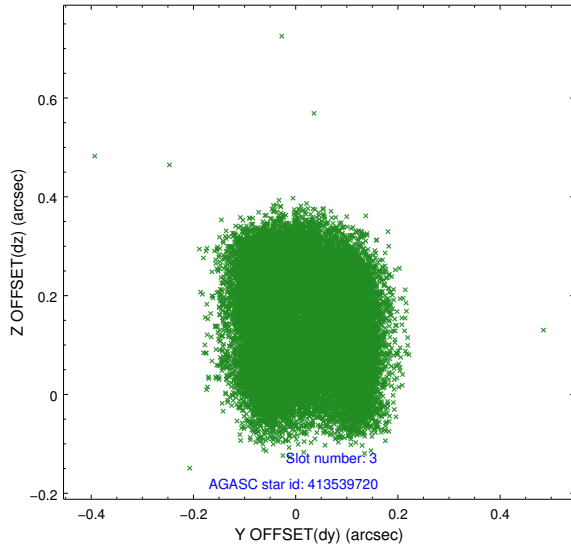


Slot Statistics

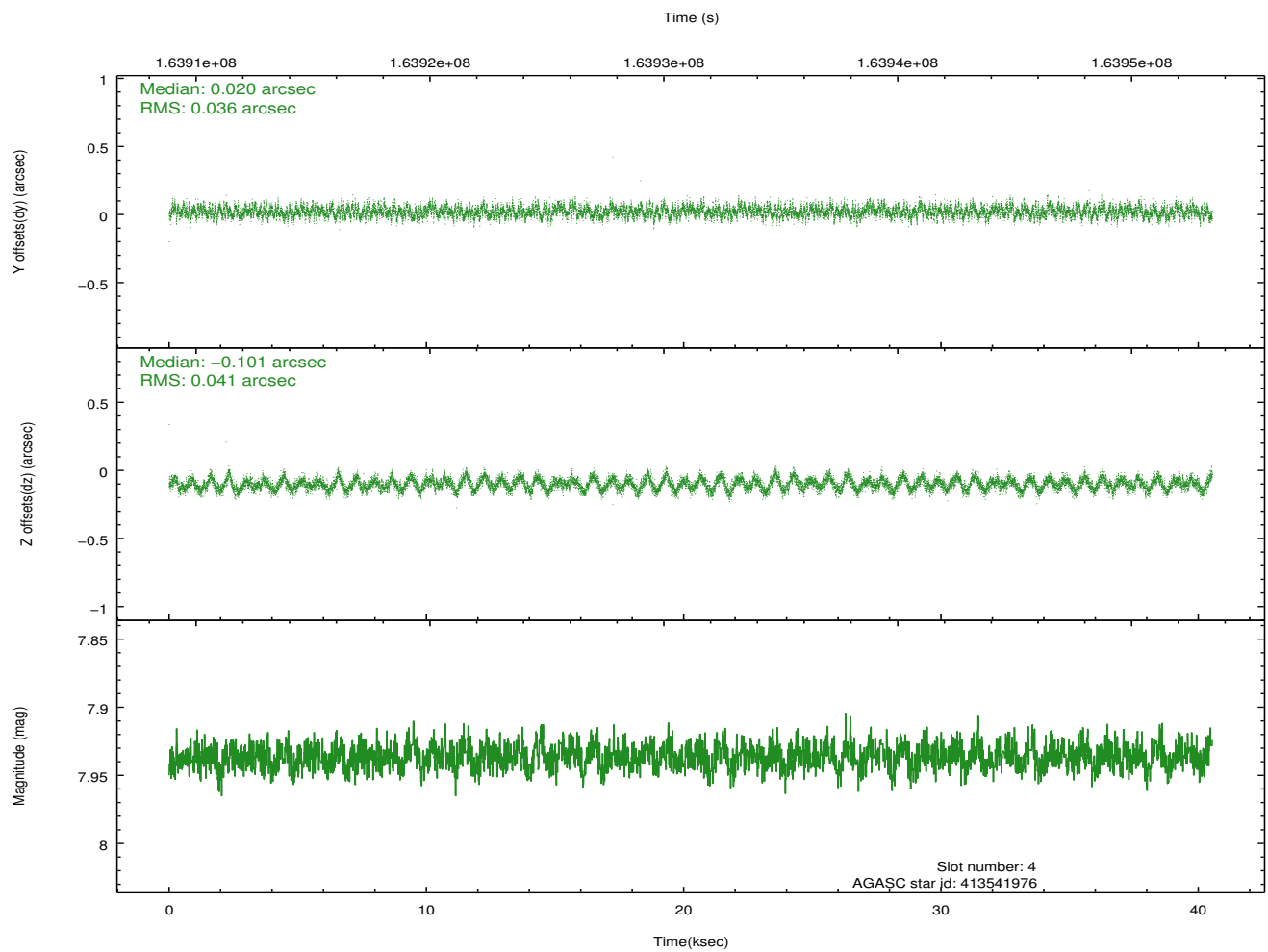
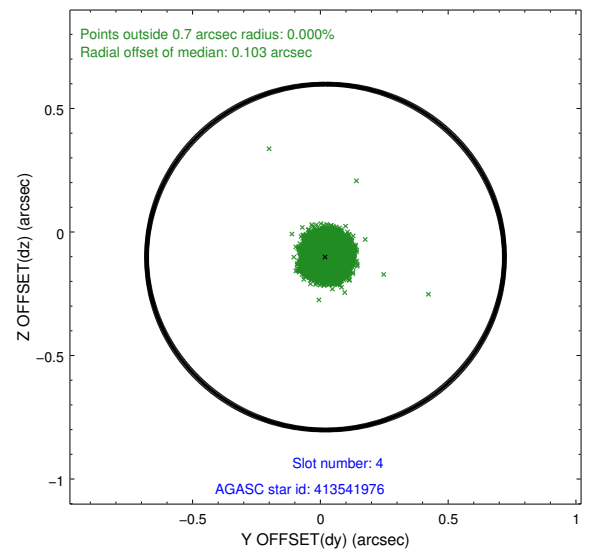
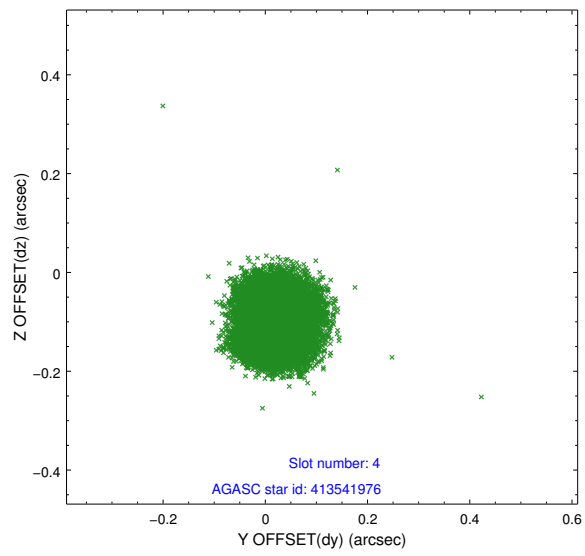
slot	status	id	mag	n_pts	med_dy	med_dz	dr1	dr2	ra	dec	mean_y	mean_z
0	FID	ACIS-I-1	7.24	9891	-0.037	0.066	0.006	0.011	0.000000	0.000000	937.27	-832.49
1	FID	ACIS-I-5	7.24	9889	-0.059	0.019	0.006	0.011	0.000000	0.000000	-1810.87	1064.93
2	FID	ACIS-I-6	7.26	9889	0.005	-0.015	0.007	0.011	0.000000	0.000000	402.82	1709.43
3	GUIDE	413539720	8.70	19774	0.010	0.170	0.141	0.215	303.574155	40.710521	-1570.63	-818.10
4	GUIDE	413541976	7.94	19779	0.020	-0.101	0.058	0.091	302.763626	40.944908	-2014.03	1503.41
5	GUIDE	414061800	8.54	19707	0.016	-0.144	0.078	0.131	302.919373	41.392260	-420.45	1985.37
6	GUIDE	413536320	9.16	19705	-0.018	0.058	0.086	0.137	304.179335	41.235524	905.24	-1203.14
7	GUIDE	414061080	9.71	19767	-0.039	0.033	0.095	0.156	304.309437	41.350182	1442.38	-1278.97

2.4 Star Slots

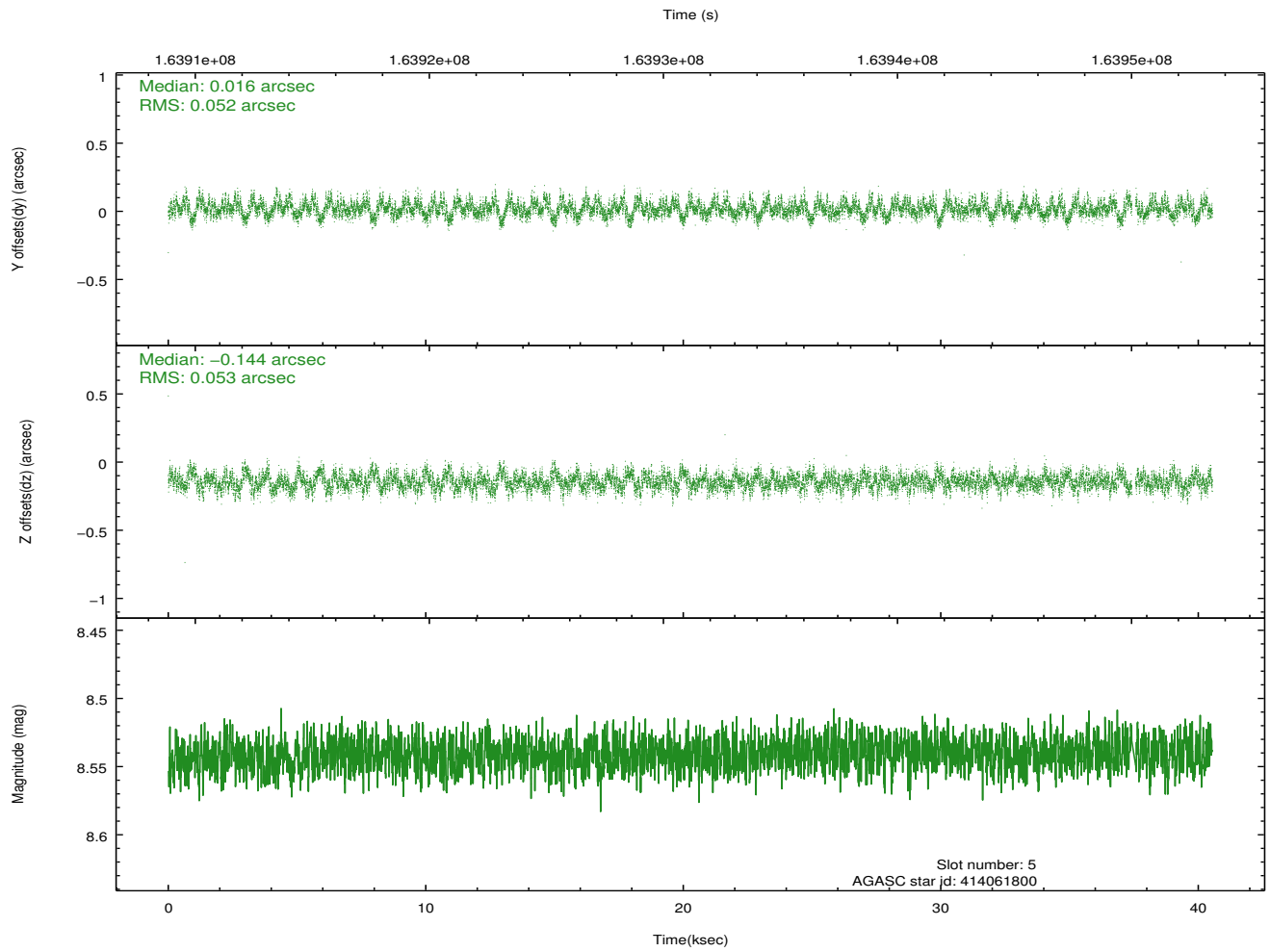
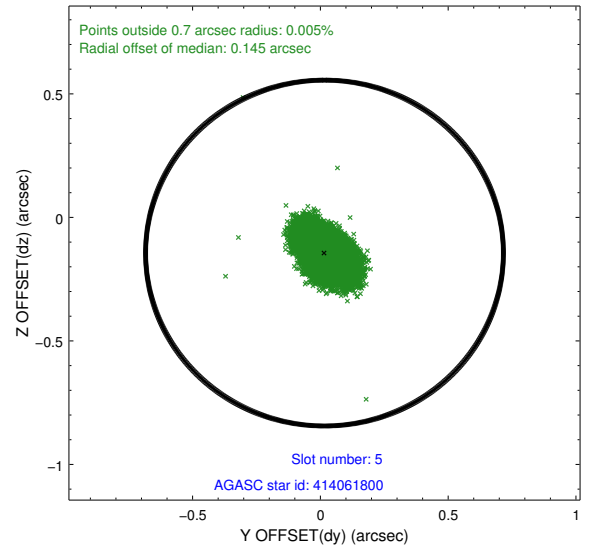
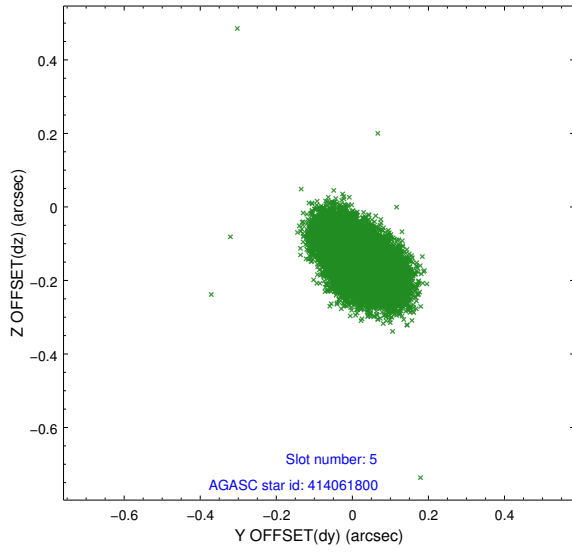
2.4.1 Slot 3



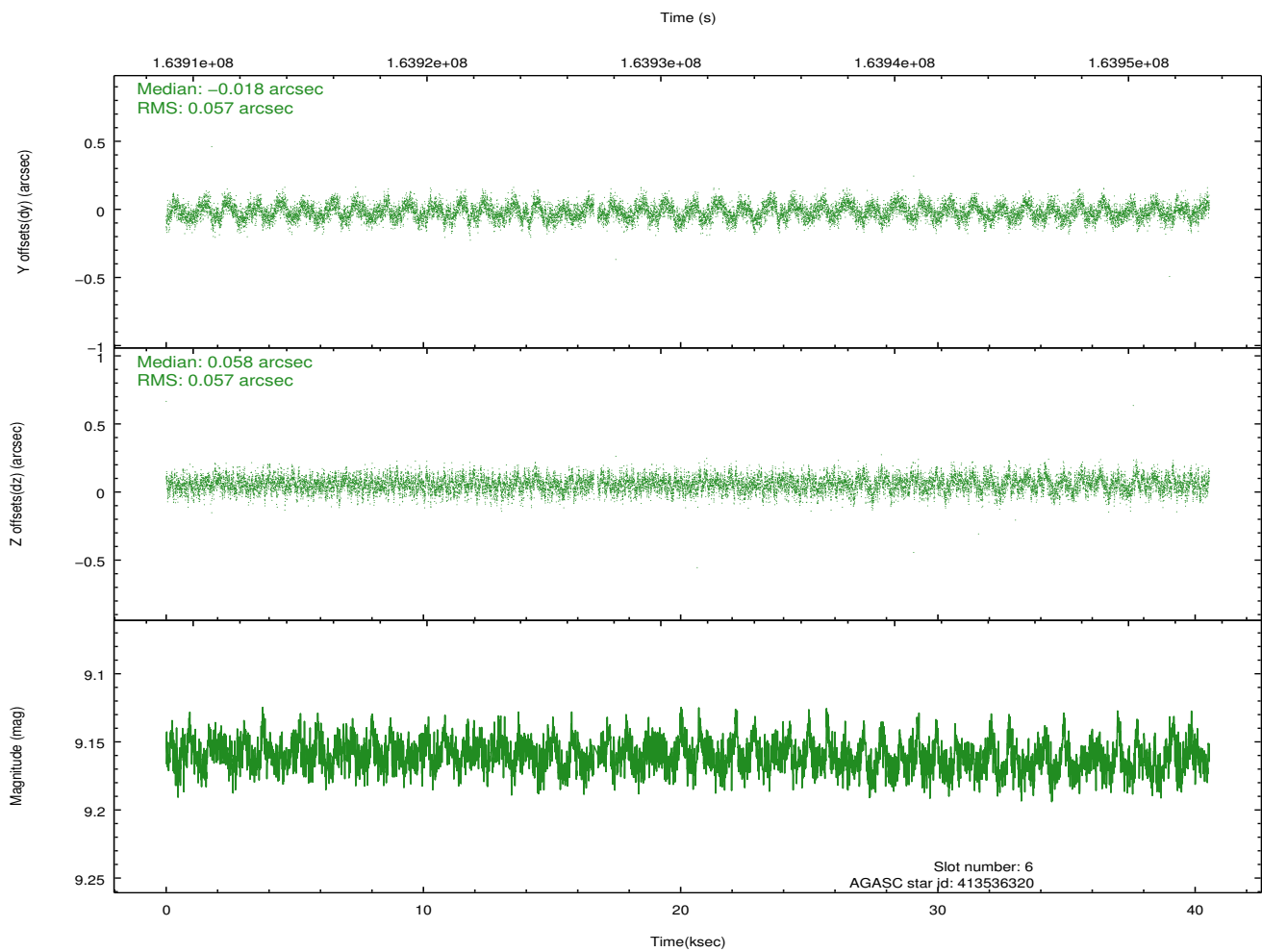
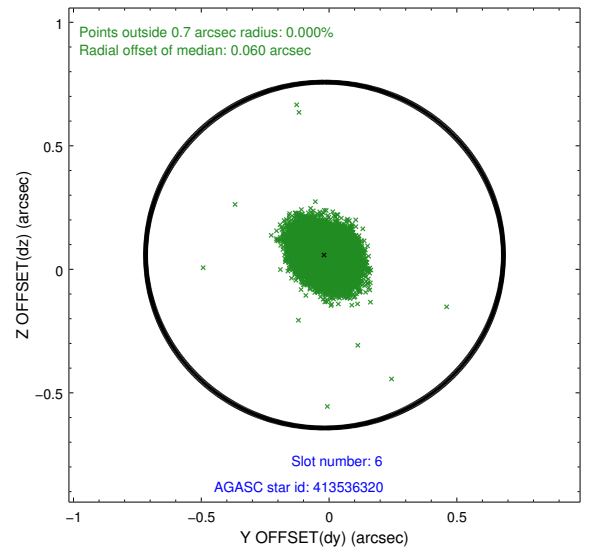
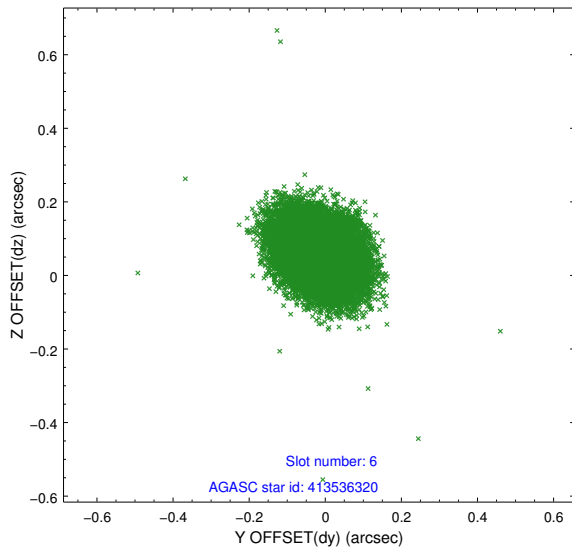
2.4.2 Slot 4



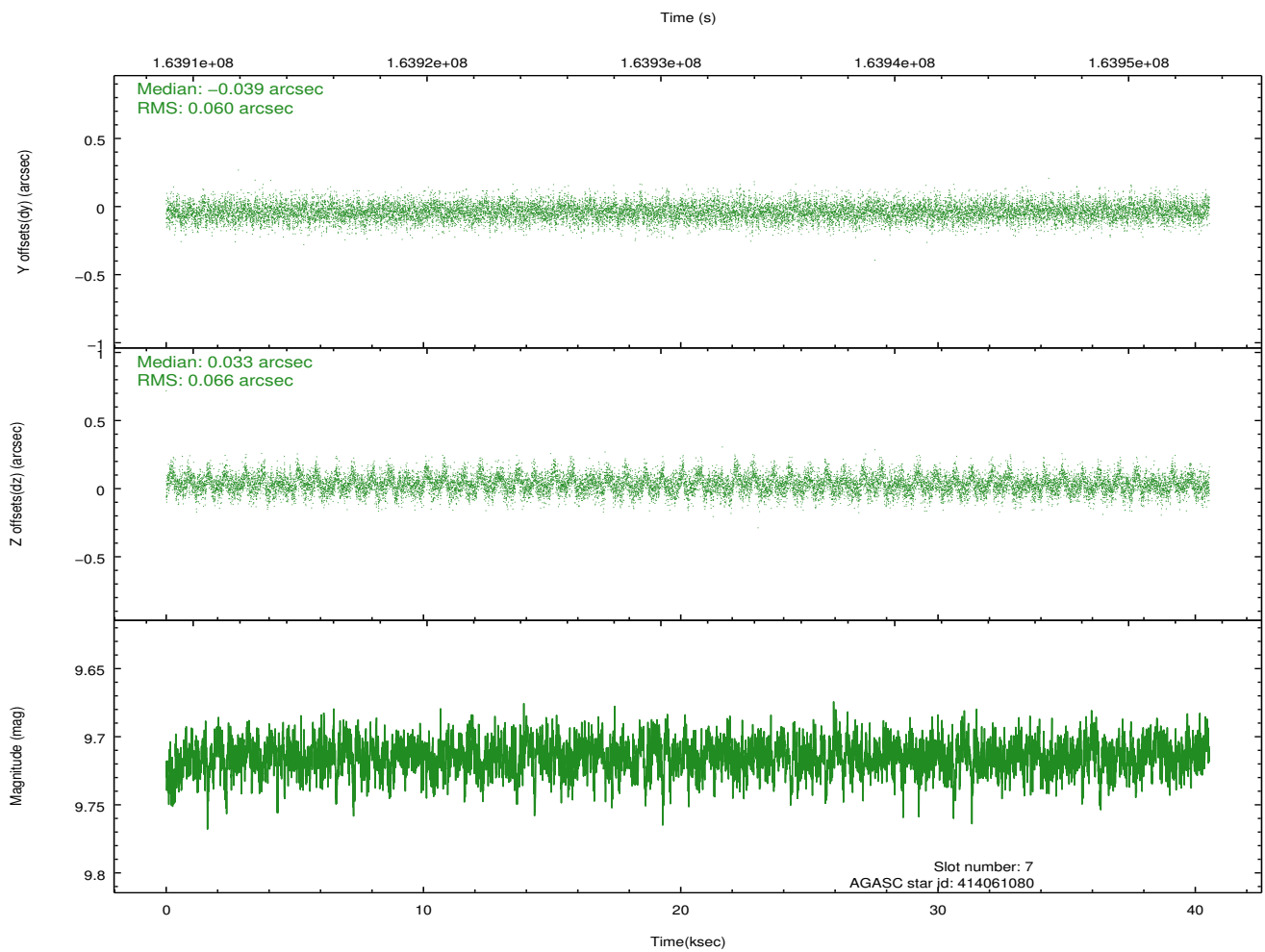
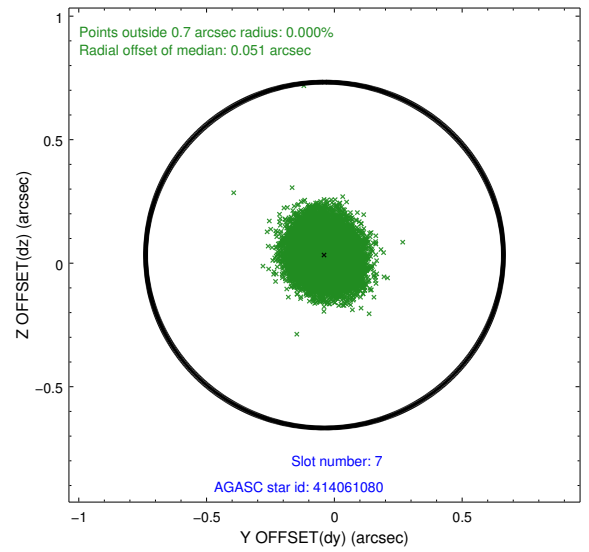
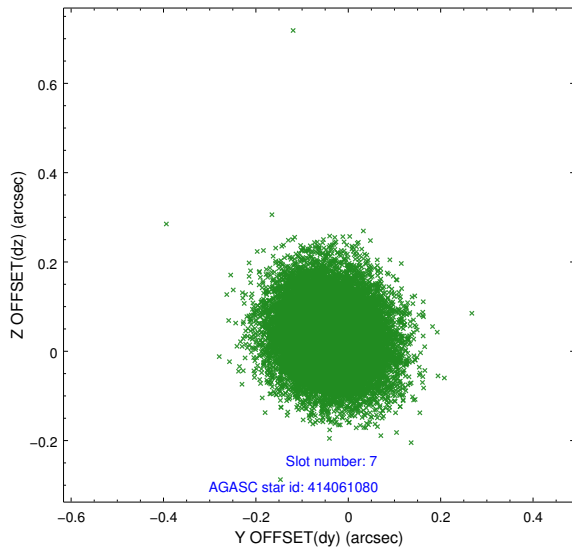
2.4.3 Slot 5



2.4.4 Slot 6

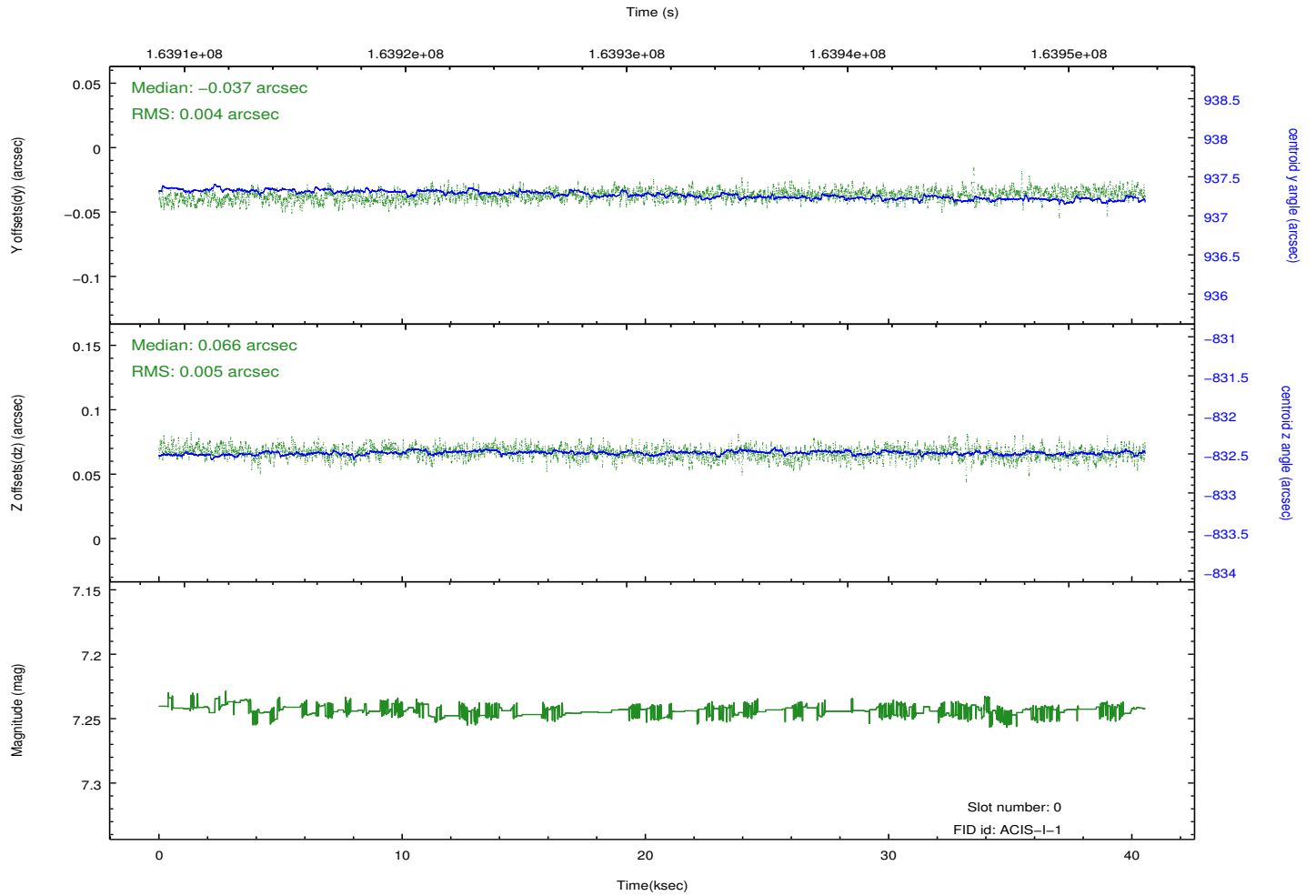
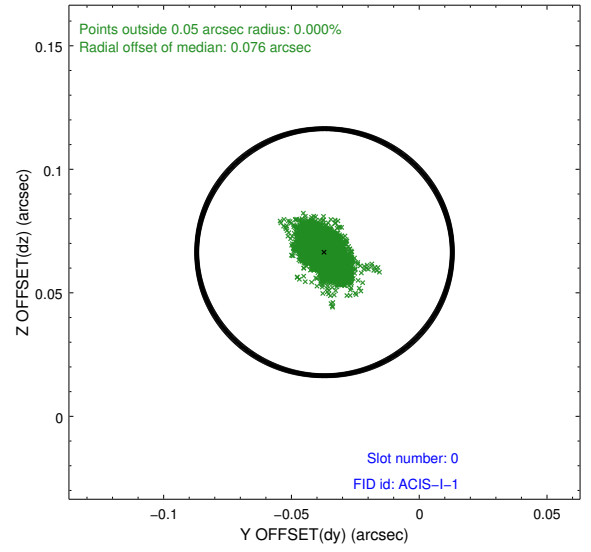
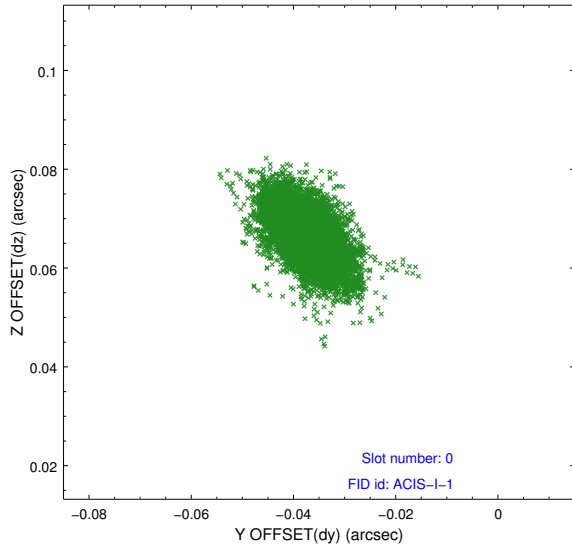


2.4.5 Slot 7

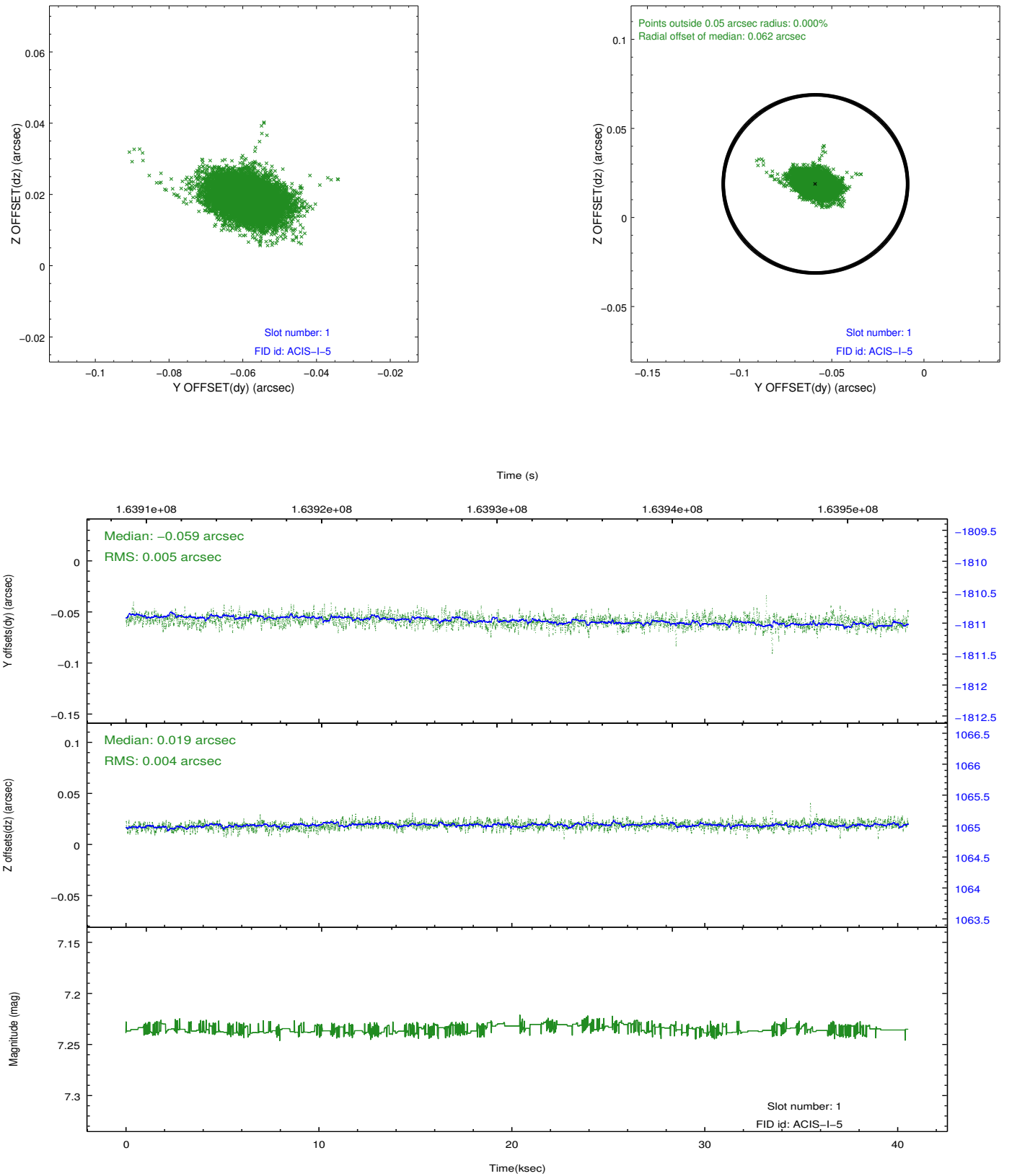


2.5 FID Slots

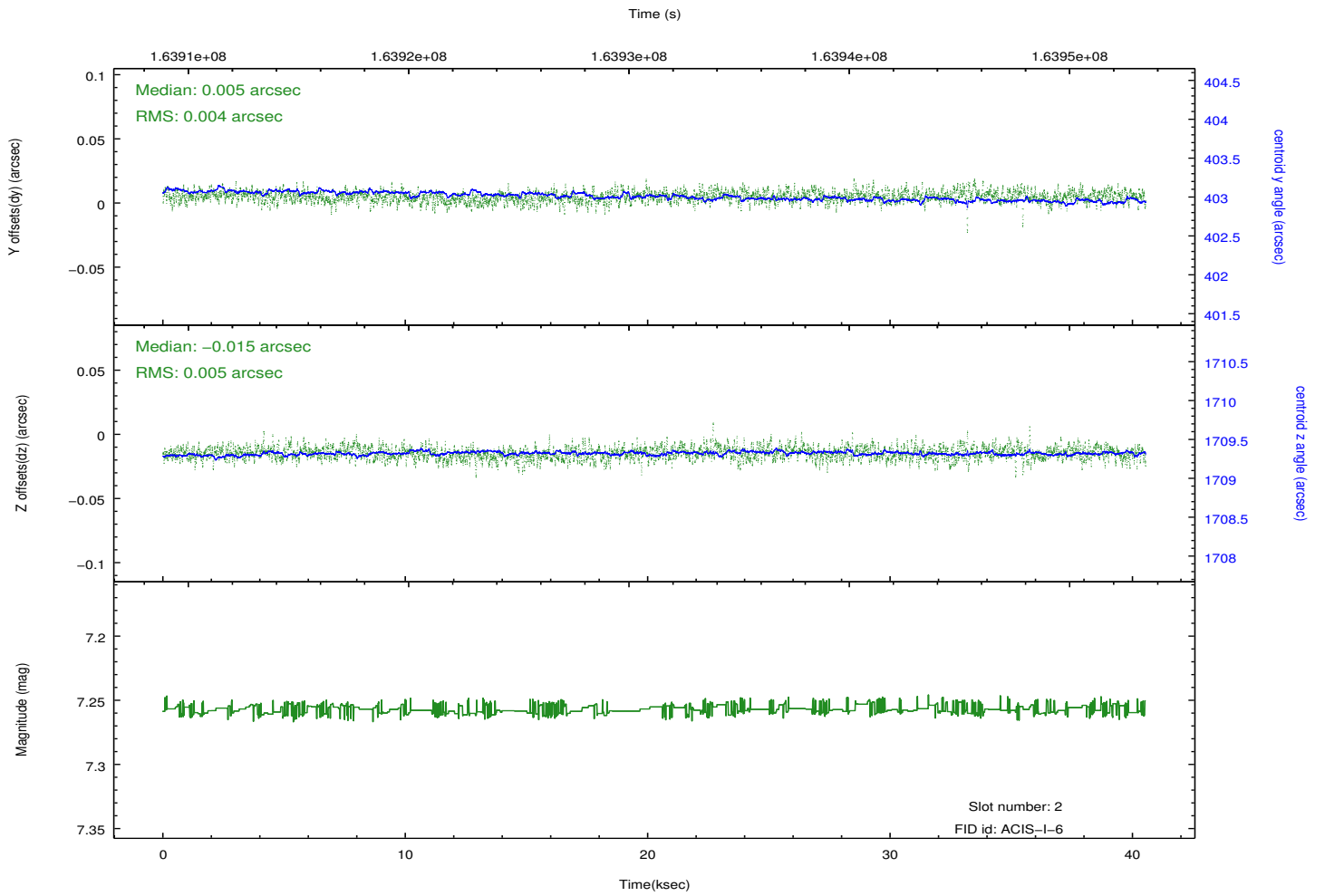
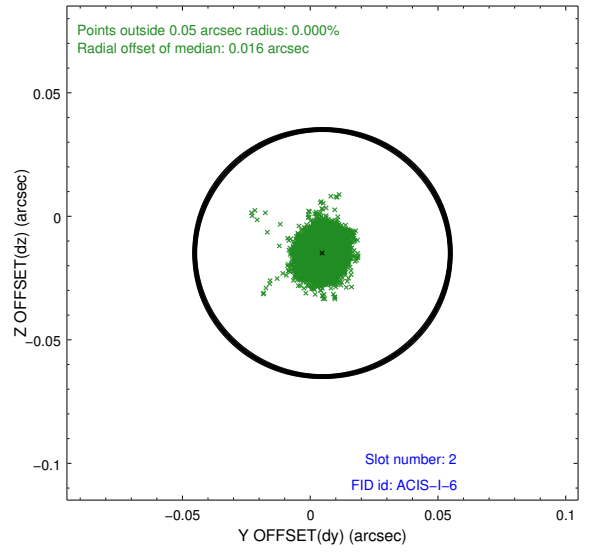
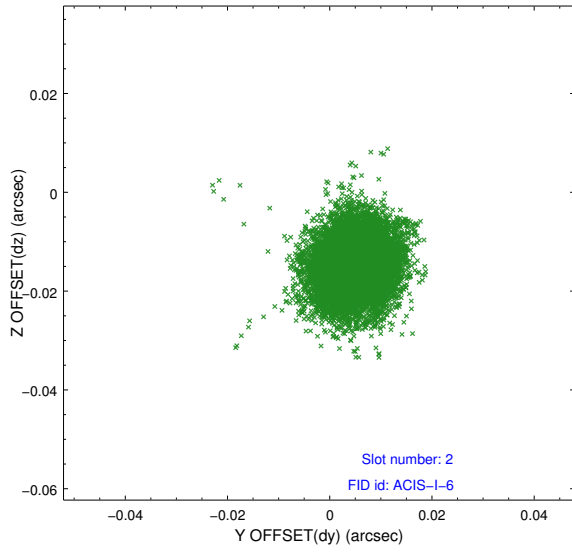
2.5.1 Slot 0



2.5.2 Slot 1



2.5.3 Slot 2



A Summary

A.1 Status

V&V Scientist	Jen Lauer
V&V Date (YYYY-MM-DD)	2012.11.08
V&V Edition	1
V&V Disposition and Status	OK
V&V Charge Time	39.347

A.2 Comments