

V&V Reference Report

L2 ASCDS Version : 8.4.5

Observation 4178 - L2 Version 3
Chandra X-Ray Center

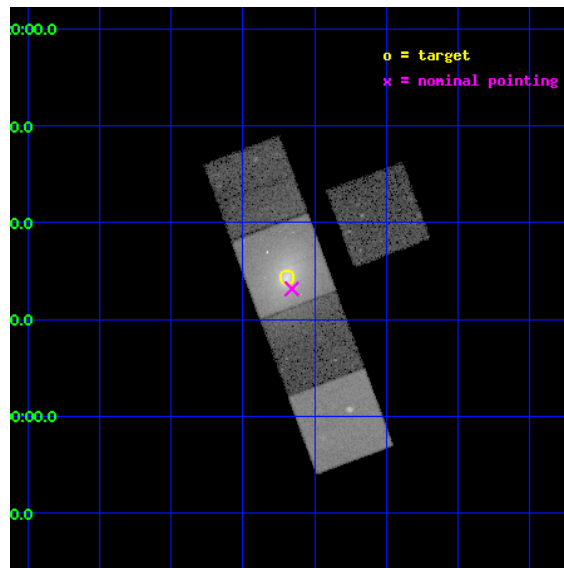
L2 Processing Date : Nov 1 2012

Contents

1	Front	2
2	OBI	3
2.1	OBI	3
2.1.1	Images	3
2.1.2	Bias	3
2.1.3	Parameters	4
2.1.4	Events	4
2.2	Compared Parameters	5
2.3	Aspect	6
2.4	Star Slots	9
2.4.1	Slot 3	9
2.4.2	Slot 4	10
2.4.3	Slot 5	11
2.4.4	Slot 6	12
2.4.5	Slot 7	13
2.5	FID Slots	14
2.5.1	Slot 0	14
2.5.2	Slot 1	15
2.5.3	Slot 2	16
A	Summary	17
A.1	Status	17
A.2	Comments	17

1 Front

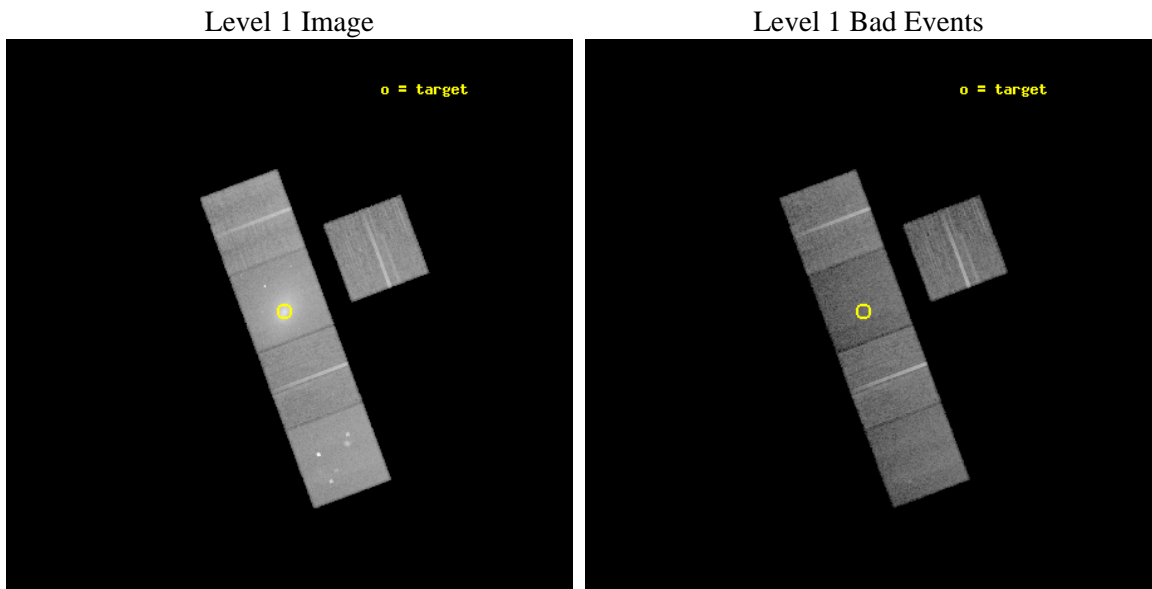
seq_num	800334	Sequence number
obs_id	4178	Observation id
title	A SEARCH FOR FOSSILS OF FEEDBACK IN THREE RADIO- AND OPTICALLY-QUIET COOLING FLOWS	Proposal title
observer	Prof Megan Donahue	Principal investigator
object	ABELL 1650	Source name
dtcycle	0	
cycle	P	events from which exps? Prim/Second/Both
ra_targ	194.673333	Observer's specified target RA [deg]
dec_targ	-1.761917	Observer's specified target Dec [deg]
ra_nom	194.66449555077	Nominal RA [deg]
dec_nom	-1.7807195947974	Nominal Dec [deg]
roll_nom	249.59647880251	Nominal Roll [deg]
revision	3	Processing version of data
ontime	27620.999946862	Sum of GTIs [s]
livetime	27260.111248272	Livetime [s]
ontime3	27617.858986616	Sum of GTIs [s]
ontime5	27620.999946862	Sum of GTIs [s]
ontime6	27617.858976662	Sum of GTIs [s]
ontime7	27620.999946862	Sum of GTIs [s]
ontime8	27614.717986494	Sum of GTIs [s]
l2events	338326	Number of level 2 events



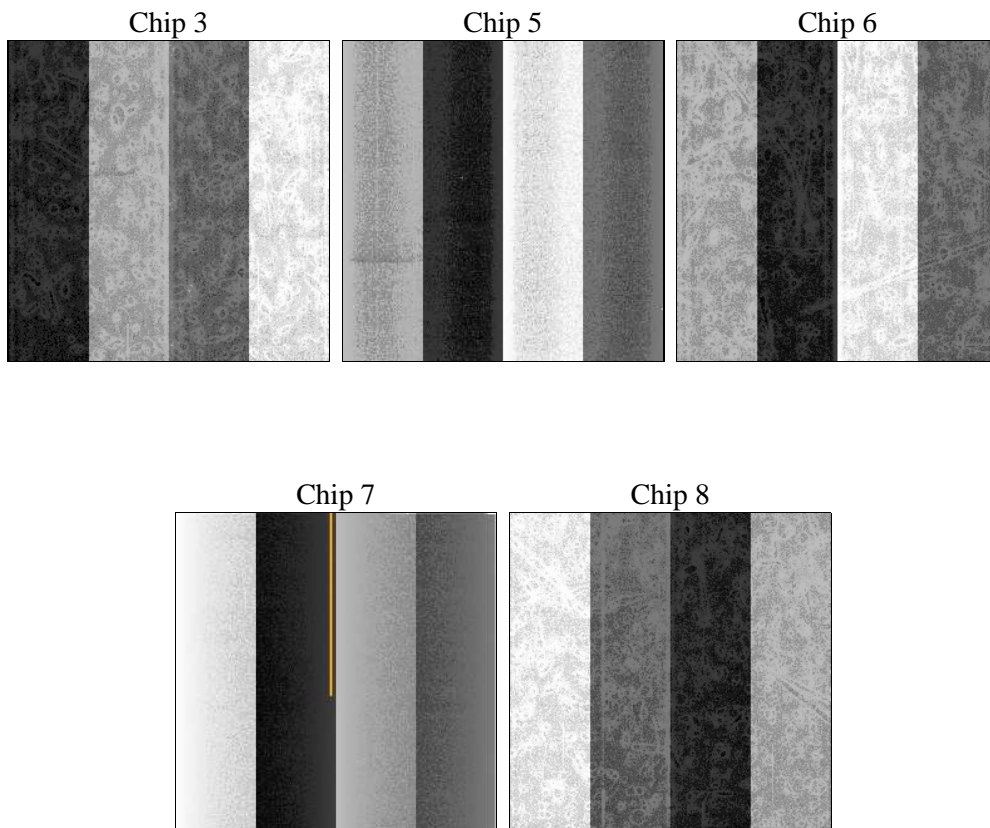
2 OBI

2.1 OBI

2.1.1 Images



2.1.2 Bias



2.1.3 Parameters

obi_num	0	Obi number	sched_exp_time	27488.031000	[s] Scheduled observation exposure time
ascdsver	8.4.5	Processing system revision	ontime	27620.999946862	Sum of GTIs [s]
caldbver	4.5.2	 	ontime3	27617.858986616	Sum of GTIs [s]
date	2012-11-01T11:35:13	Date and time of file creation	ontime5	27620.999946862	Sum of GTIs [s]
revision	3	Processing version of data	ontime6	27617.858976662	Sum of GTIs [s]
			ontime7	27620.999946862	Sum of GTIs [s]
			ontime8	27614.717986494	Sum of GTIs [s]
			l1events	975136	Number of level 1 events

2.1.4 Events

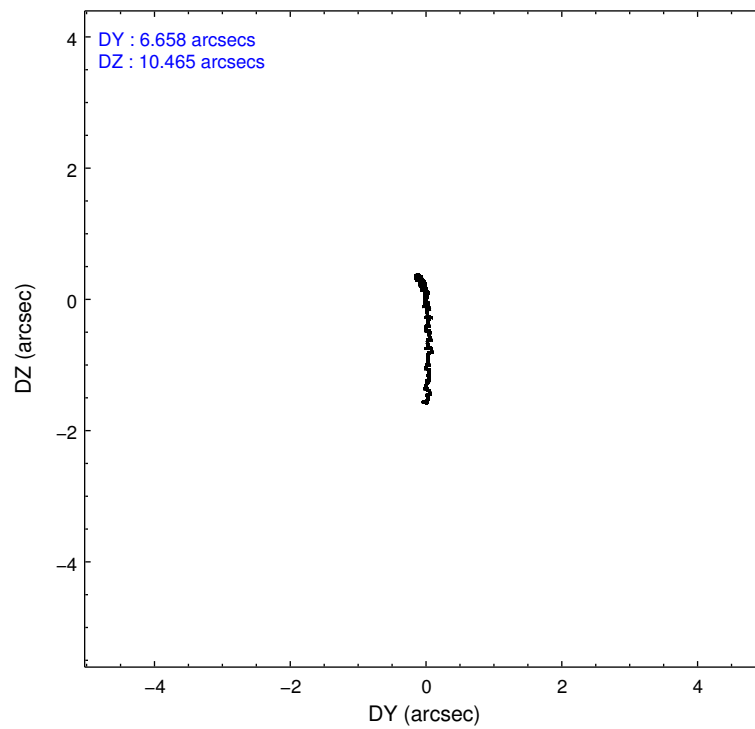
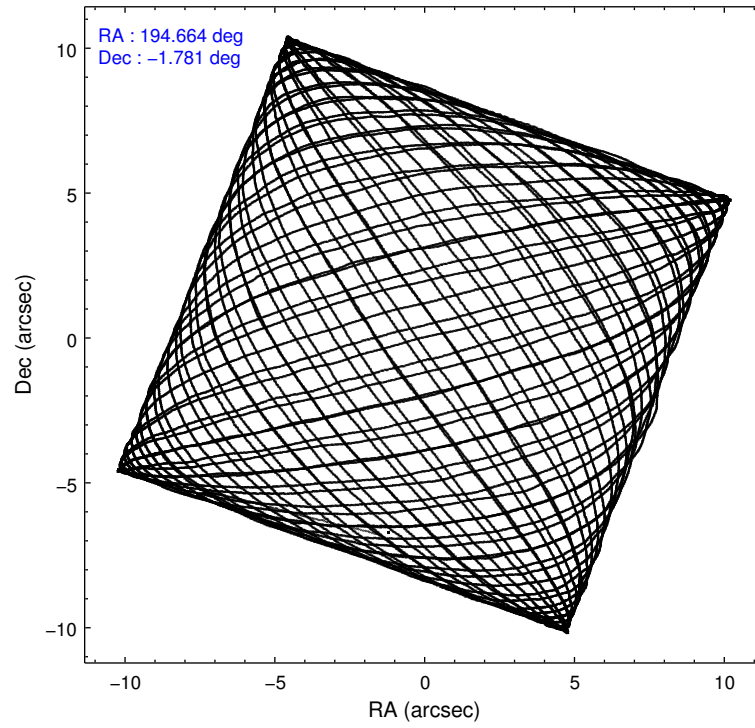
	ccd 3	ccd 5	ccd 6	ccd 7	ccd 8
level 1 events	143272	201958	152929	288371	188606
rejected events	128895	97340	130934	87425	144940
rejected %	89%	48%	85%	30%	76%

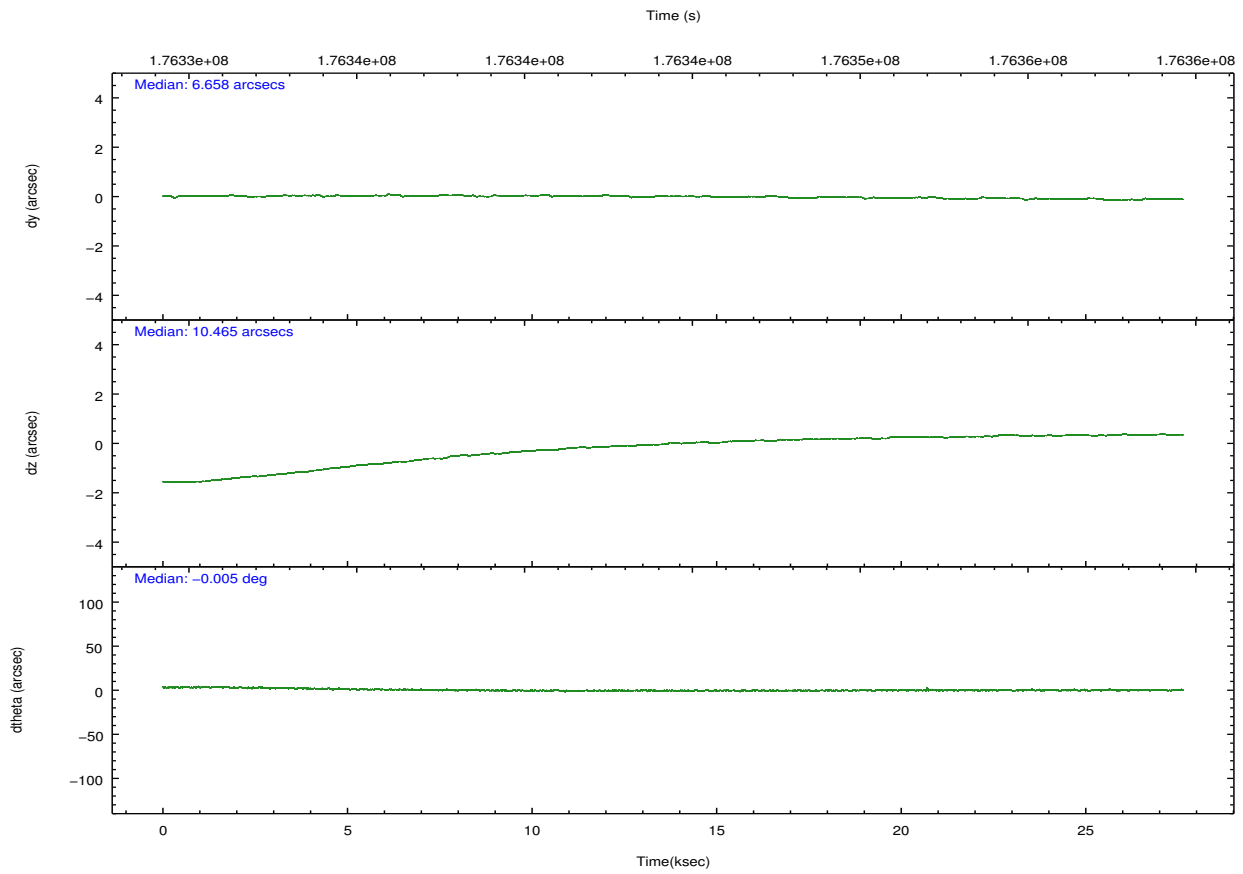
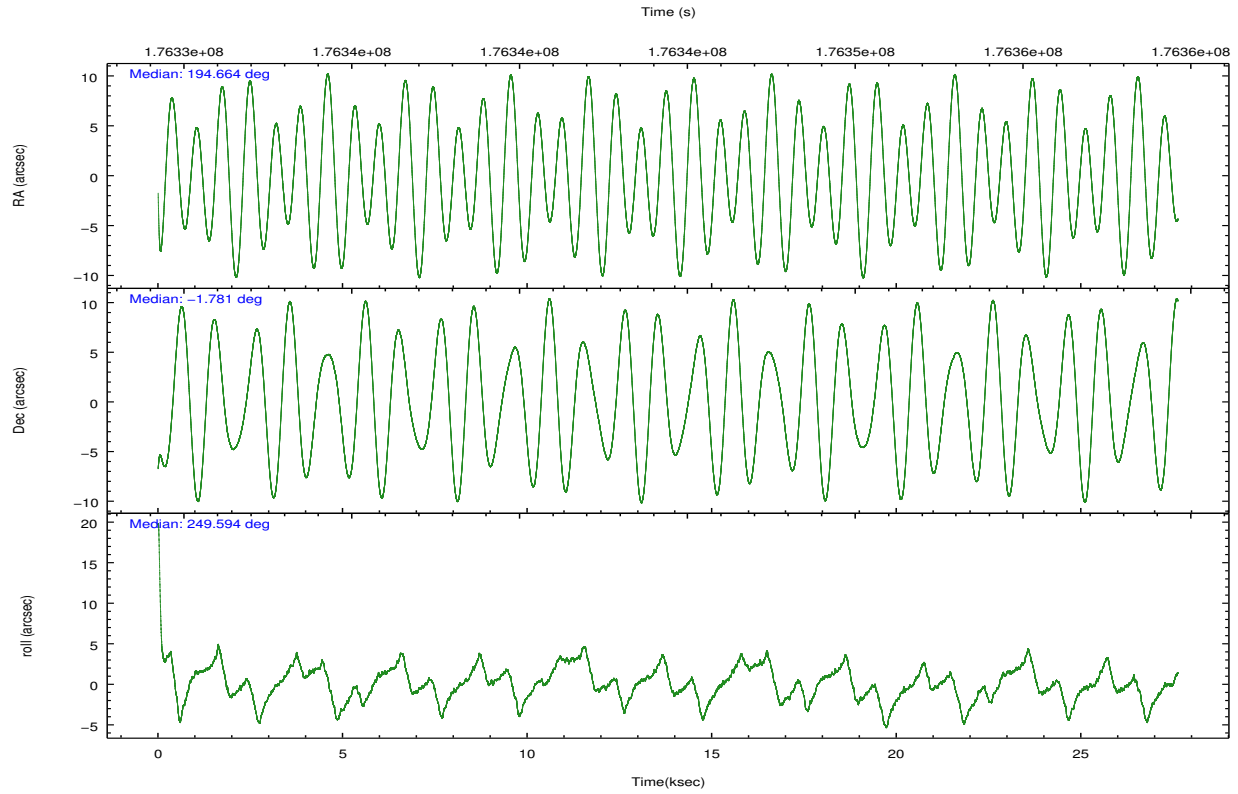
	ccd 3	ccd 5	ccd 6	ccd 7	ccd 8
grade 0 events	5609	19667	11091	48883	14924
	3%	9%	7%	16%	7%
grade 1 events	75	345	77	192	139
	0%	0%	0%	0%	0%
grade 2 events	2956	27505	3925	47780	8998
	2%	13%	2%	16%	4%
grade 3 events	1620	4738	1867	21839	4708
	1%	2%	1%	7%	2%
grade 4 events	1627	4417	1811	21532	4483
	1%	2%	1%	7%	2%
grade 5 events	5414	15902	5724	17570	8107
	3%	7%	3%	6%	4%
grade 6 events	2598	48544	3338	61296	10657
	1%	24%	2%	21%	5%
grade 7 events	123373	80840	125096	69279	136590
	86%	40%	81%	24%	72%

2.2 Compared Parameters

Parameter	Planned	Actual	Parameter	Planned	Actual
Instrument	ACIS	ACIS	Obspar format version number	7	7
Detector	ACIS-35678	ACIS-35678	Obspar file type	PREDICTED	ACTUAL
Grating	NONE	NONE	Obspar update status	NONE	UPDATED
Data mode	VFAINT	VFAINT	Number of optional ACIS chips dropped	0	0
Observation mode	POINTING	POINTING	On-chip summing requested	N	N
[deg] Pointing RA	194.659595	194.6644955507706	Subarray requested	NONE	NONE
[deg] Pointing Dec	-1.753914	-1.780719594797429	Alternating exposures requested	N	N
[deg] Pointing Roll	249.439695	249.5964788025066	[s] Primary exposure time	0.000000	3.1
[mm] SIM focus pos	-0.684267	-0.6828225247311905			
[mm] SIM defocus	0	0.001444936568705701			
[mm] SIM translation stage pos	-190.132523	-190.1400660498719			
[mm] SIM translation stage offset	0	0.00754346686406393			
[s] Observation start time (MET)	176330752.184000	176329619.3515			
Observation start date	2003-08-03T20:44:48	2003-08-03T20:26:59			
[s] Observation end time (MET)	176358240.184000	176358555.10274			
Observation end date	2003-08-04T04:22:56	2003-08-04T04:29:15			
Read mode	TIMED	TIMED			

2.3 Aspect



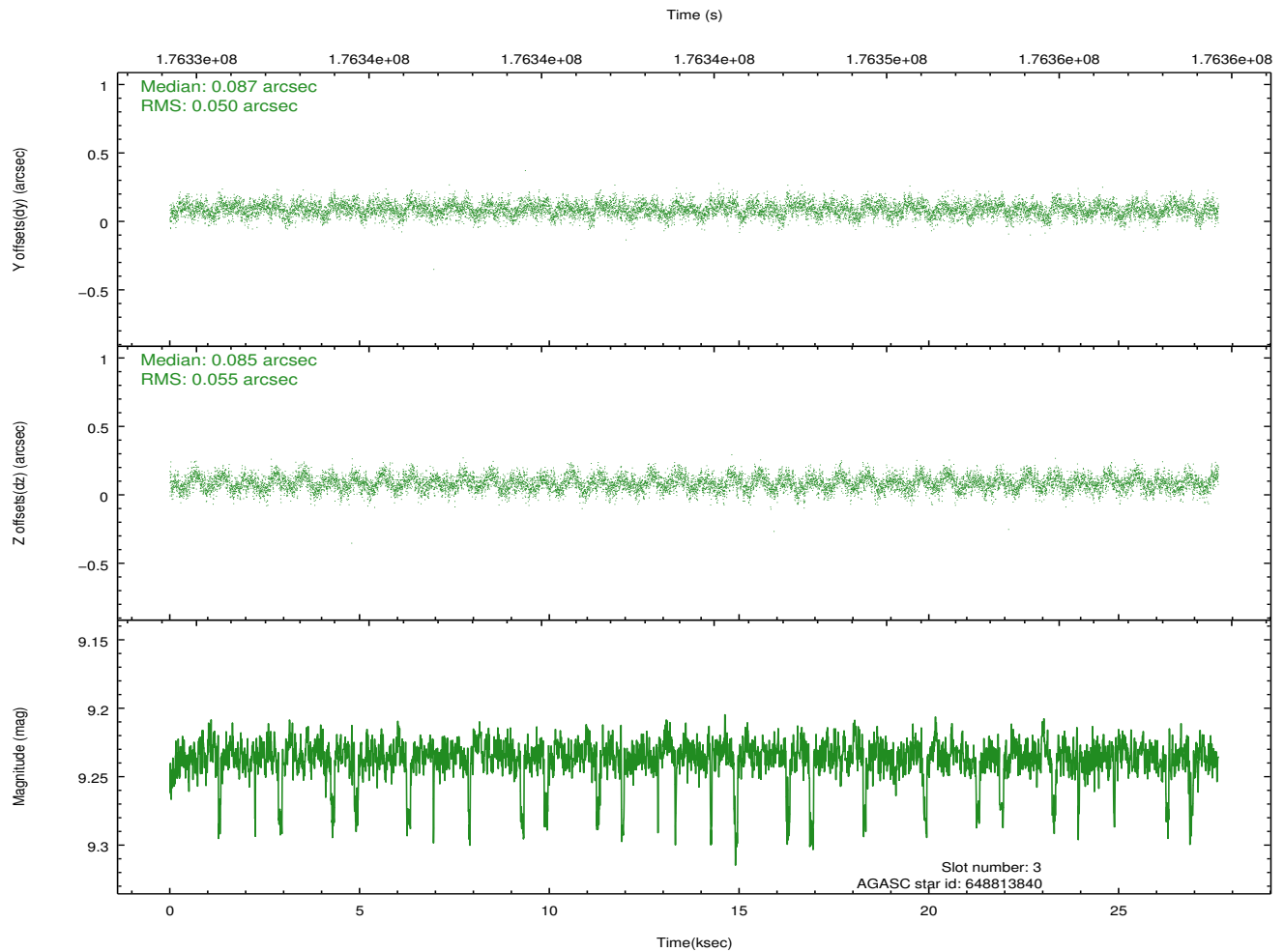
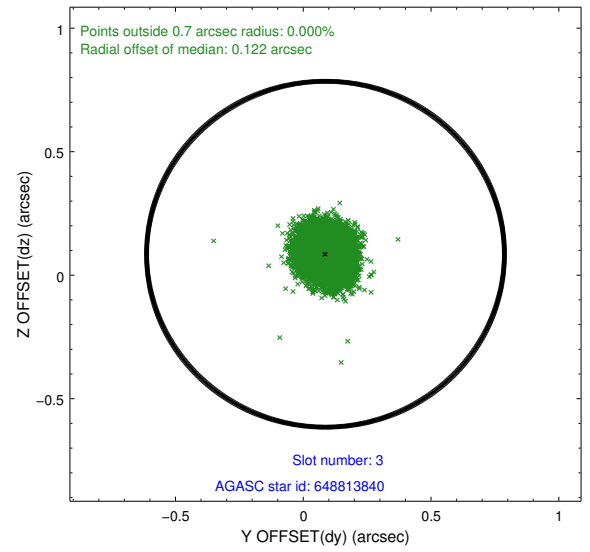
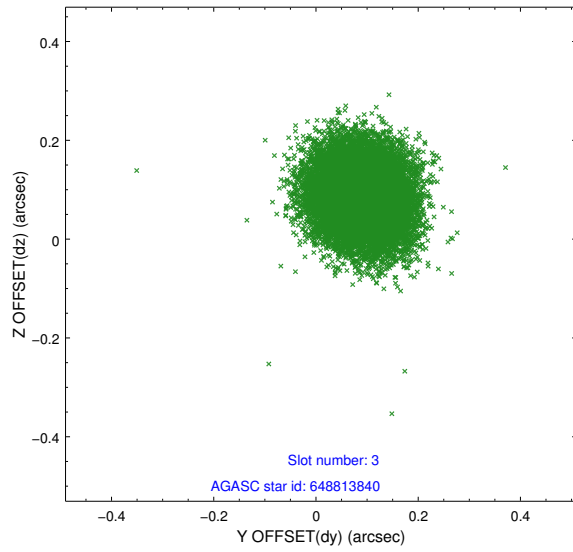


Slot Statistics

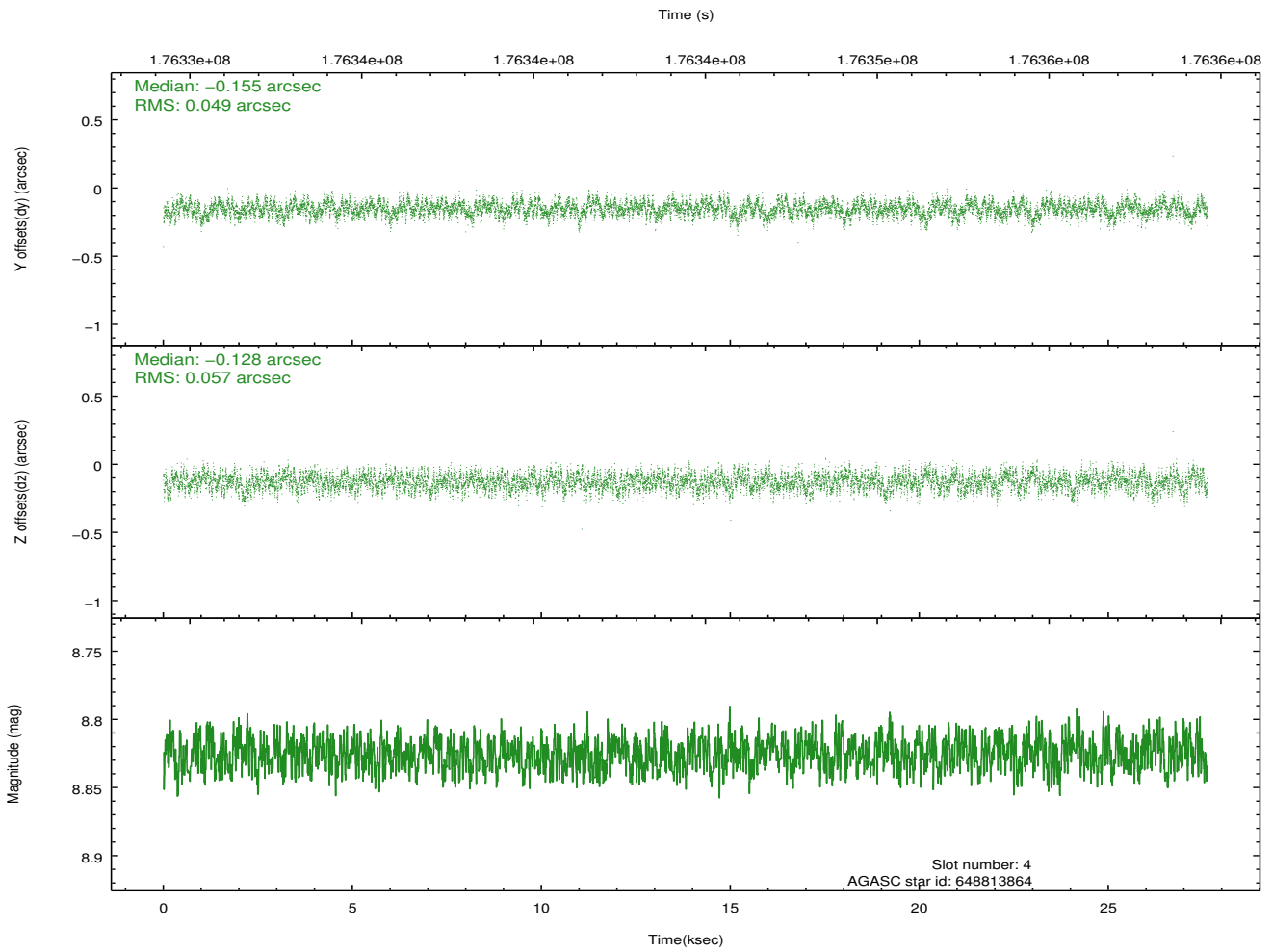
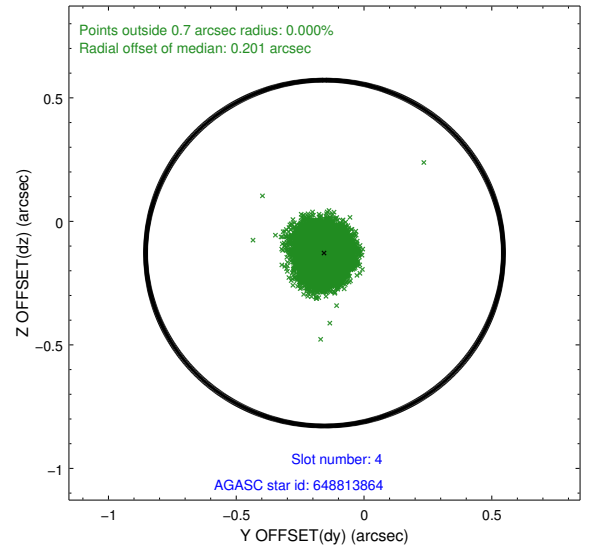
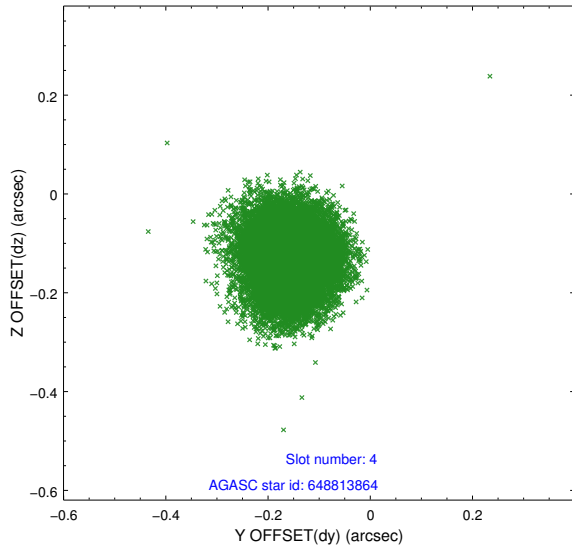
slot	status	id	mag	n_pts	med_dy	med_dz	dr1	dr2	ra	dec	mean_y	mean_z
0	FID	ACIS-S-2	7.10	6738	-0.056	-0.019	0.011	0.027	0.000000	0.000000	-759.42	-1731.49
1	FID	ACIS-S-4	7.20	6738	0.066	0.032	0.008	0.013	0.000000	0.000000	2153.92	176.98
2	FID	ACIS-S-5	7.23	6736	-0.042	-0.005	0.012	0.027	0.000000	0.000000	-1812.15	170.67
3	GUIDE	648813840	9.24	13419	0.087	0.085	0.079	0.126	194.717621	-1.945504	573.00	438.34
4	GUIDE	648813864	8.83	13469	-0.155	-0.128	0.081	0.125	194.235605	-1.103465	-1656.15	-2251.12
5	GUIDE	648815736	9.94	13462	0.315	-0.009	0.108	0.172	194.100949	-2.130858	1977.22	-1404.89
6	GUIDE	648813664	8.35	13477	-0.149	-0.083	0.058	0.095	194.615044	-1.051809	-2309.99	-1037.95
7	GUIDE	648814560	8.77	13471	-0.097	0.137	0.062	0.100	194.841018	-1.130344	-2331.17	-176.74

2.4 Star Slots

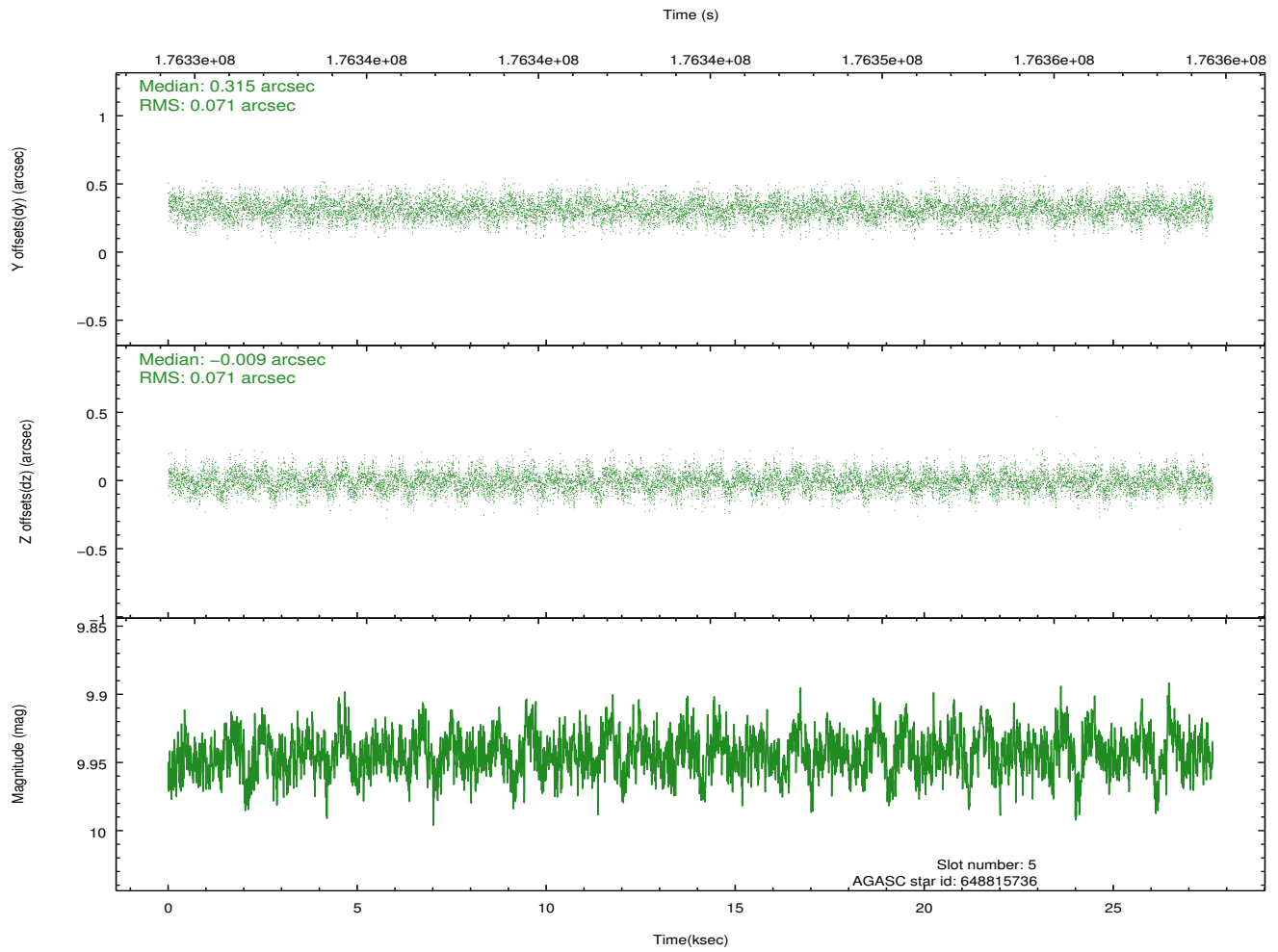
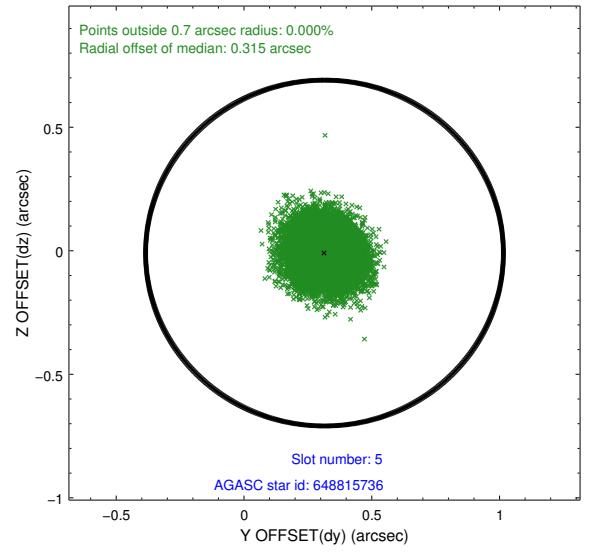
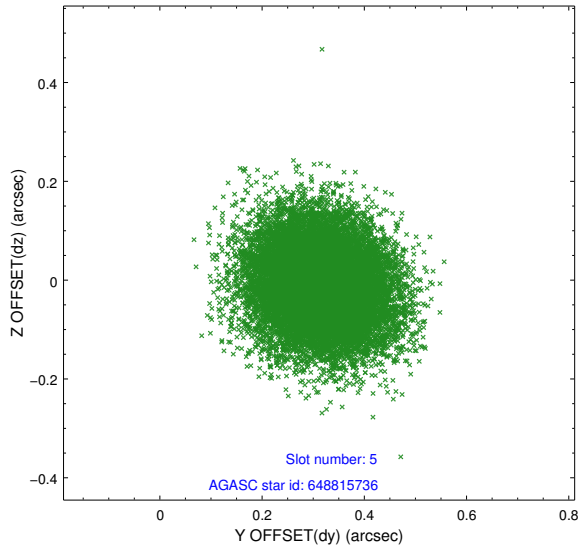
2.4.1 Slot 3



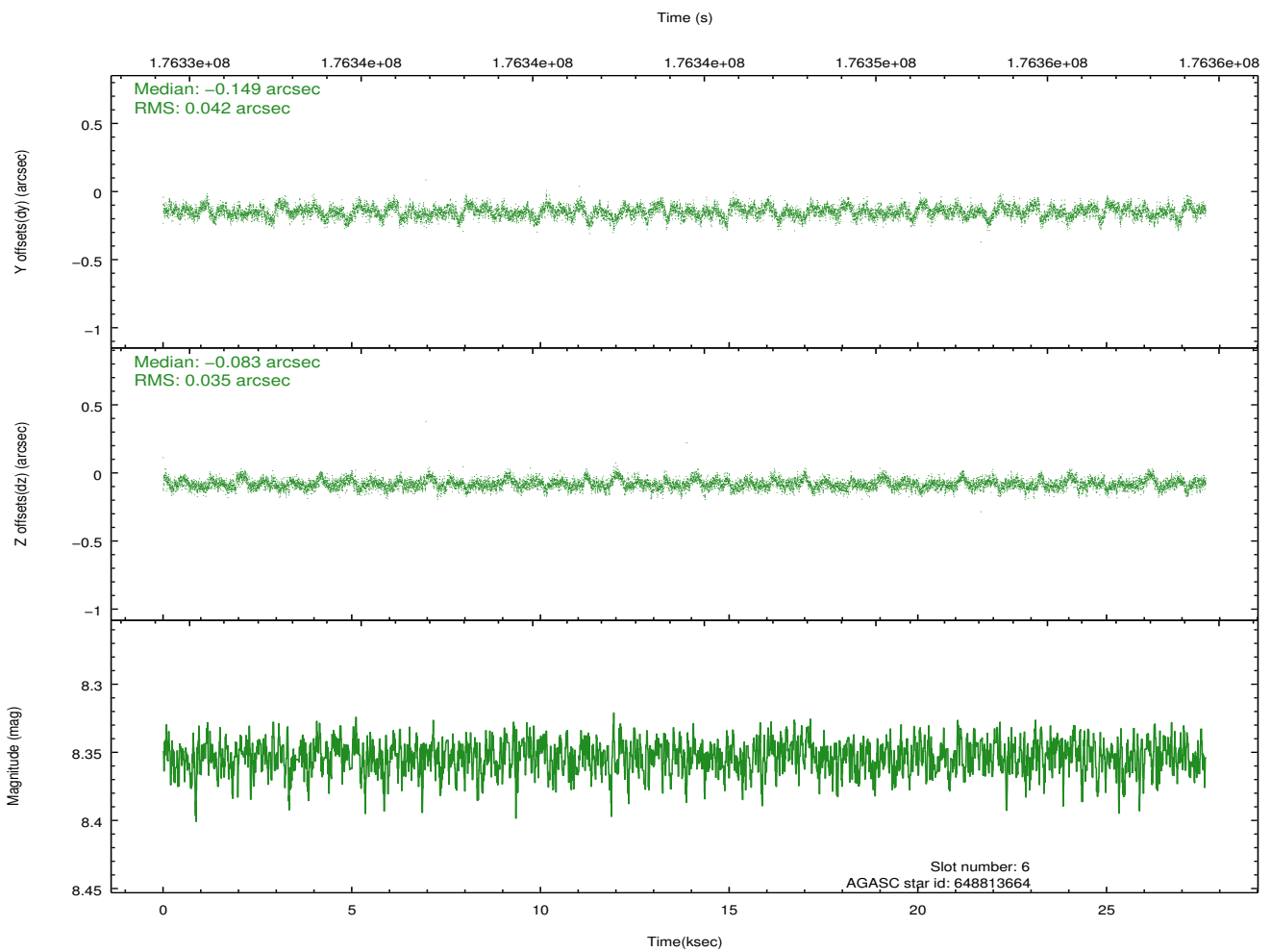
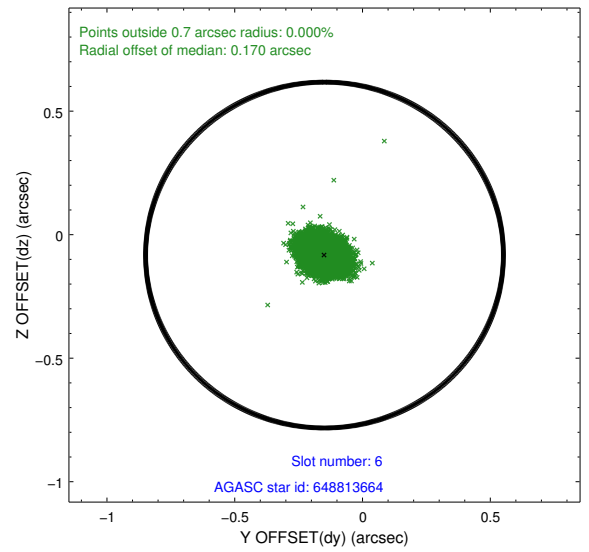
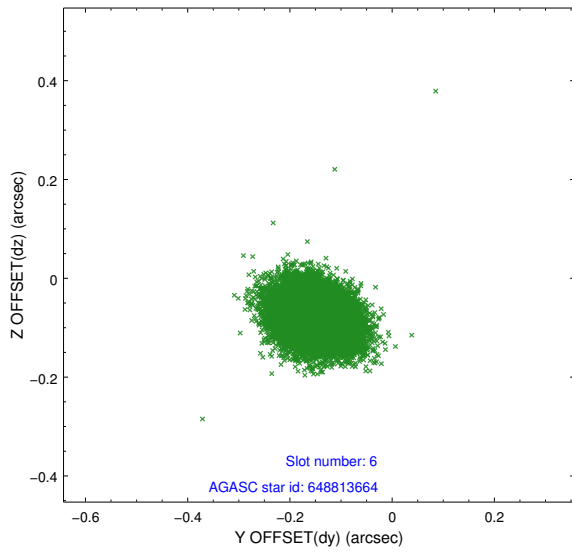
2.4.2 Slot 4



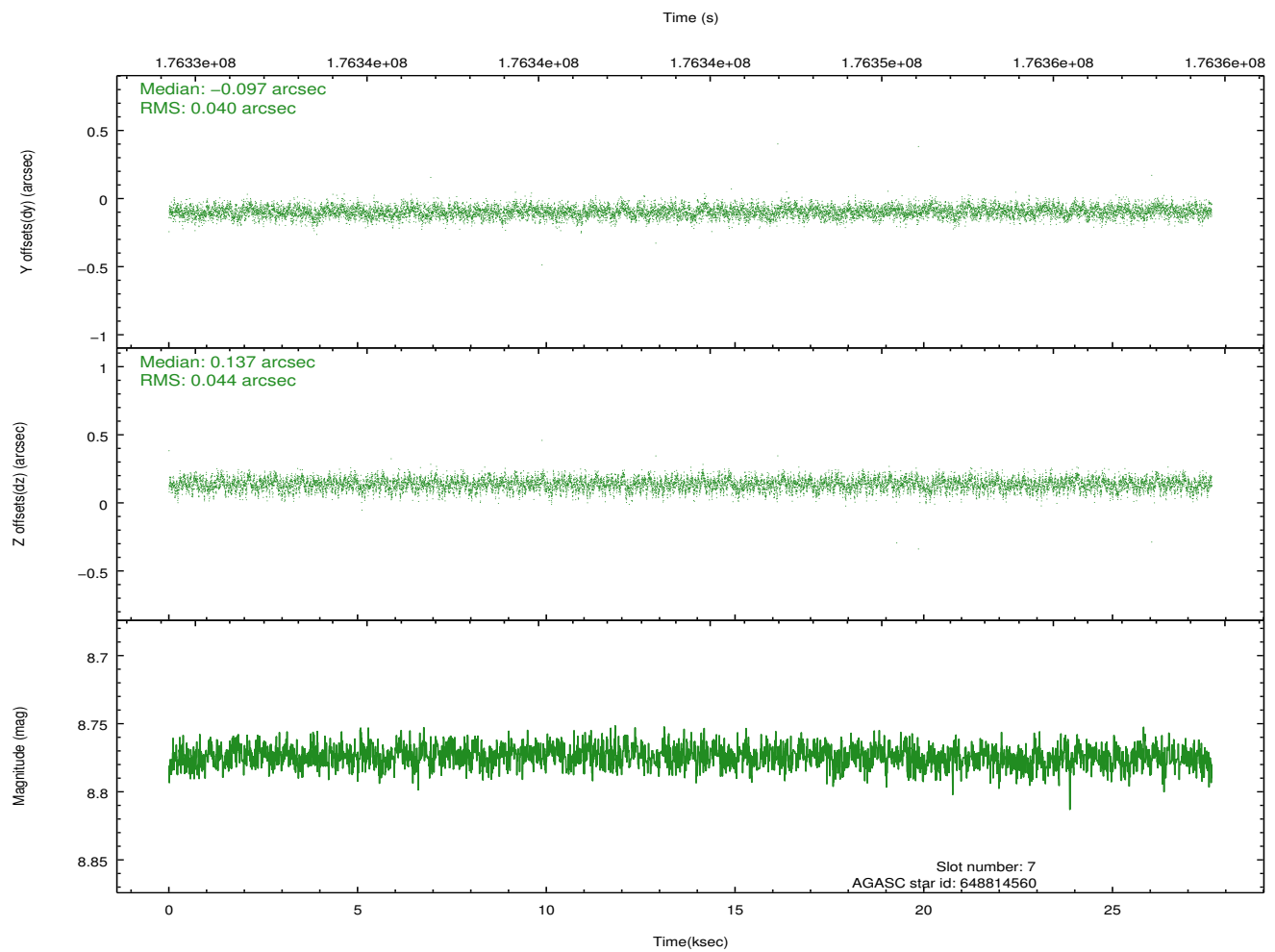
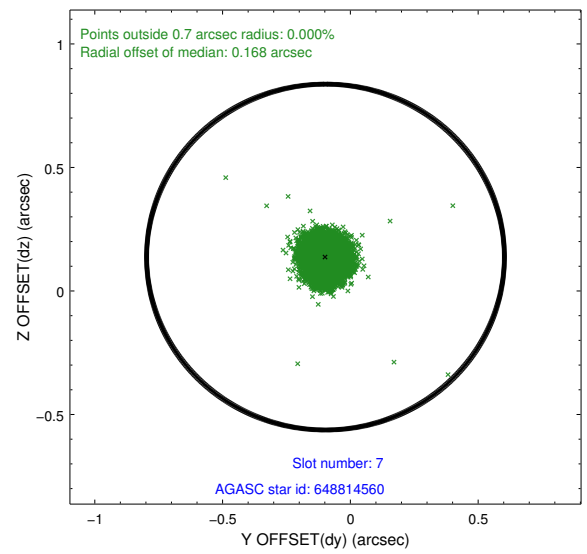
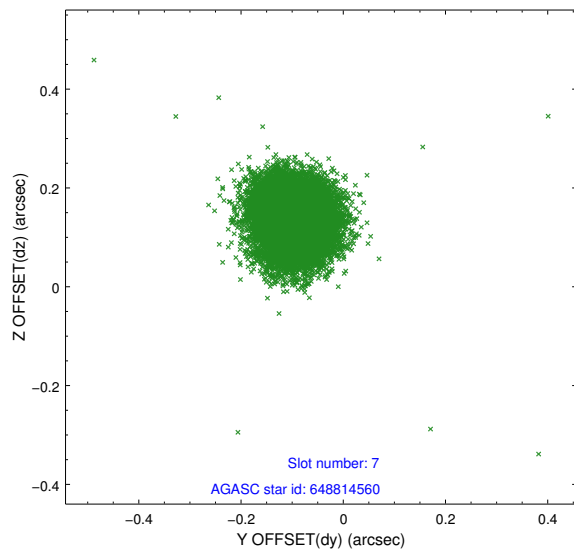
2.4.3 Slot 5



2.4.4 Slot 6

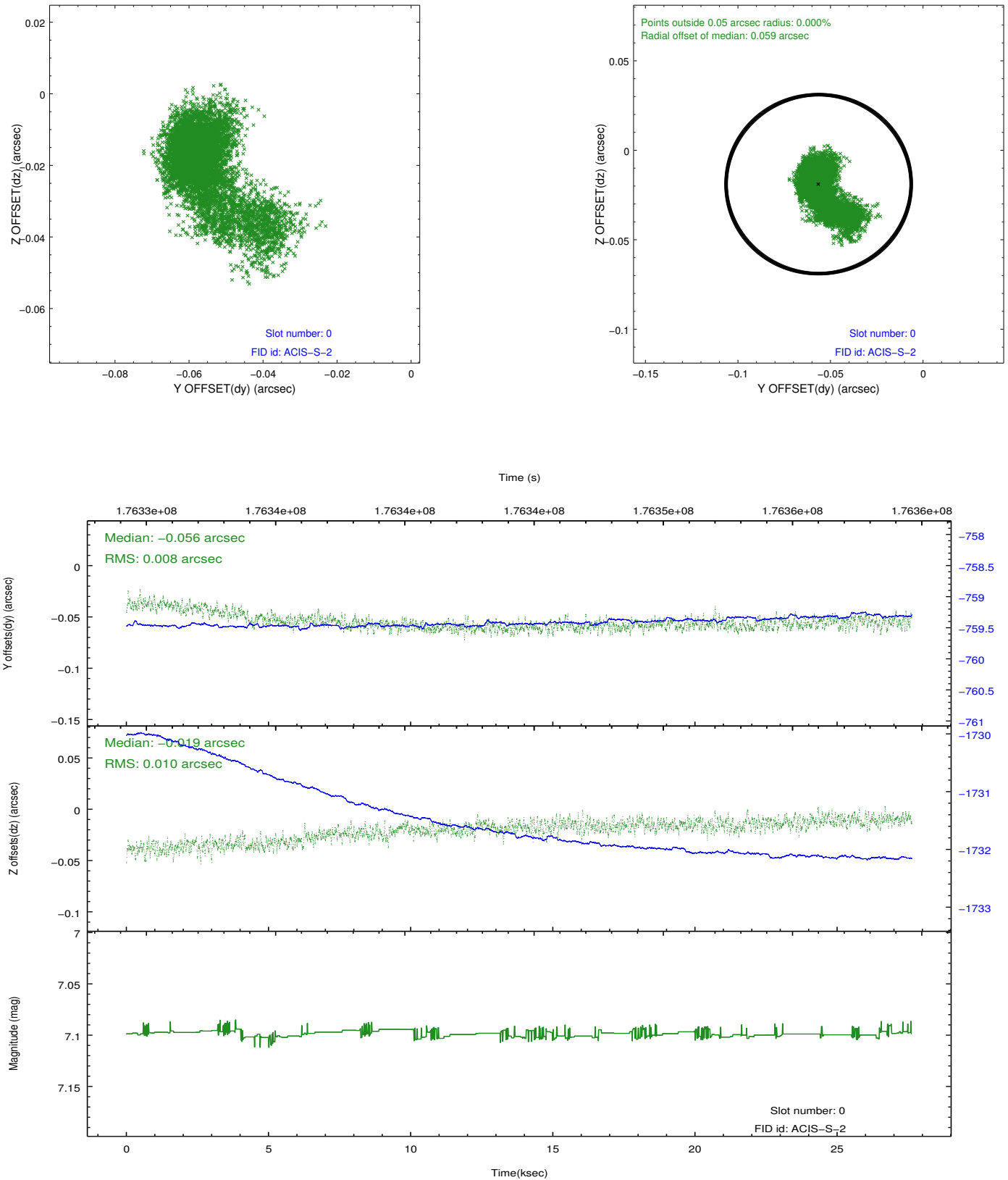


2.4.5 Slot 7

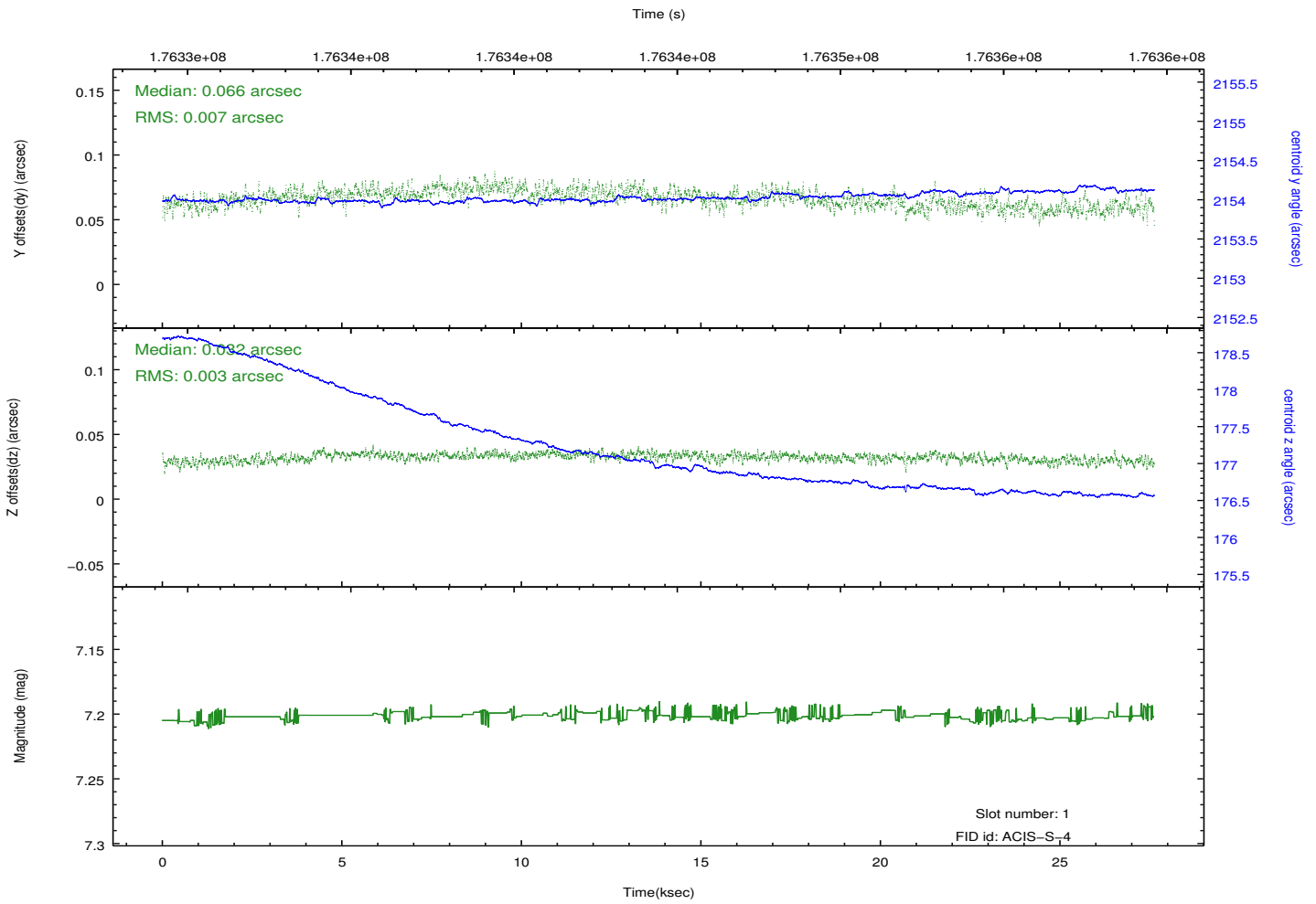
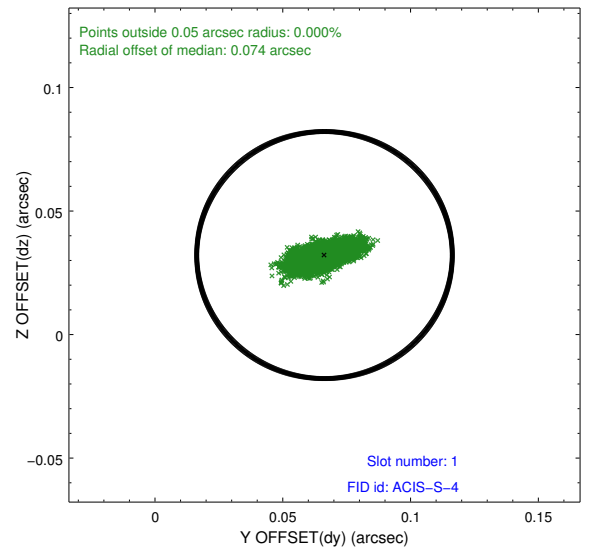
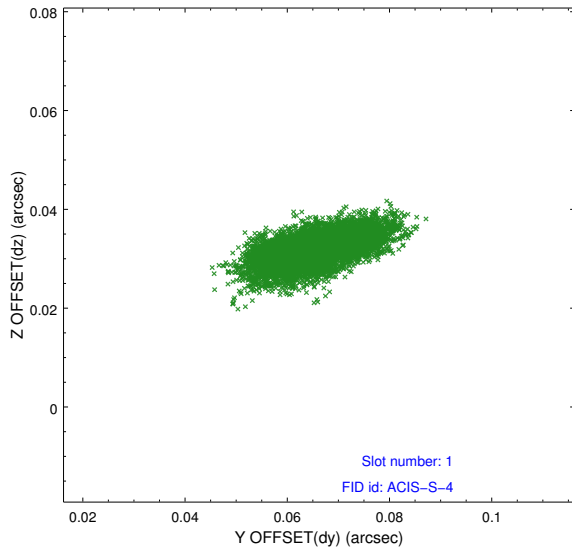


2.5 FID Slots

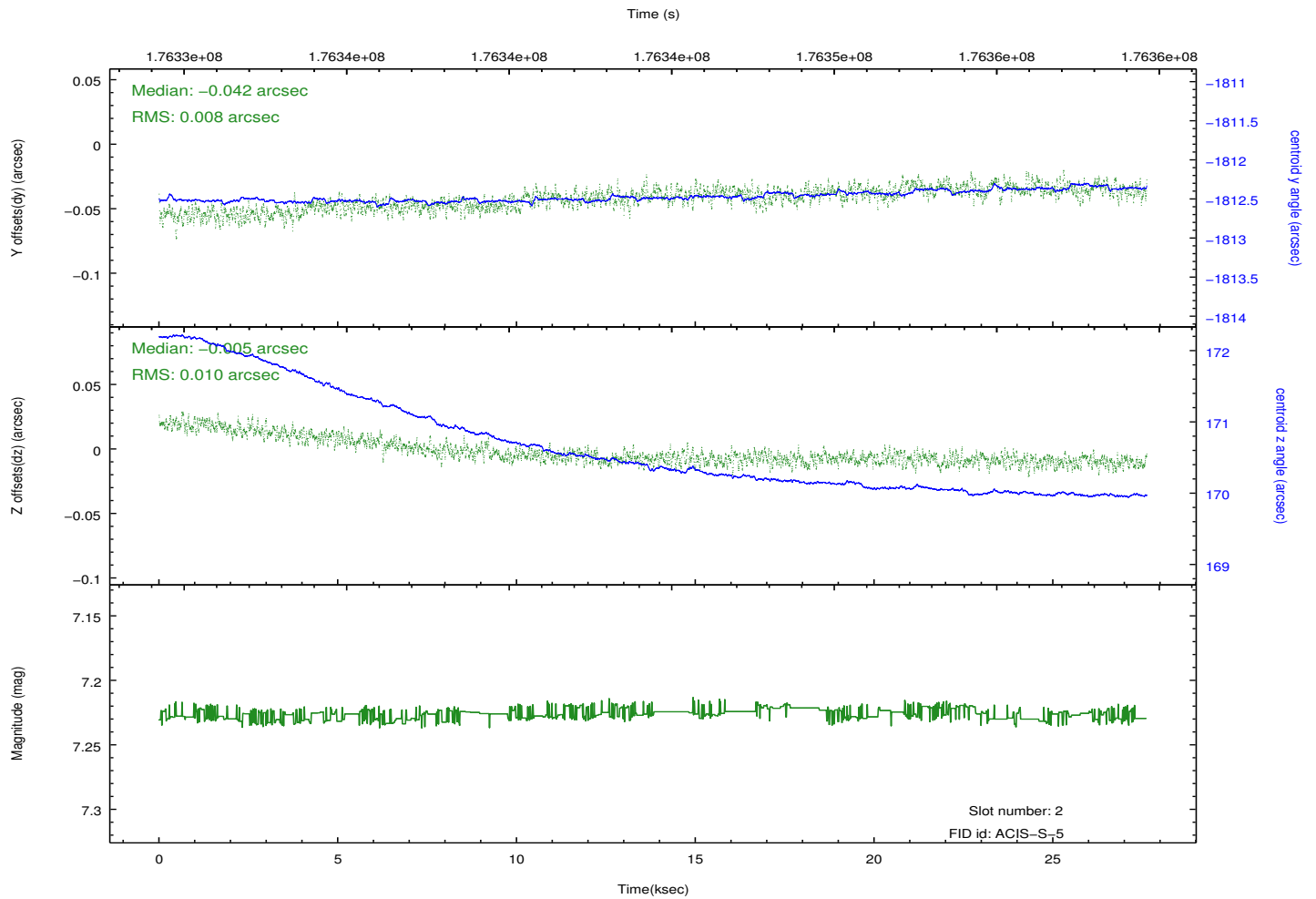
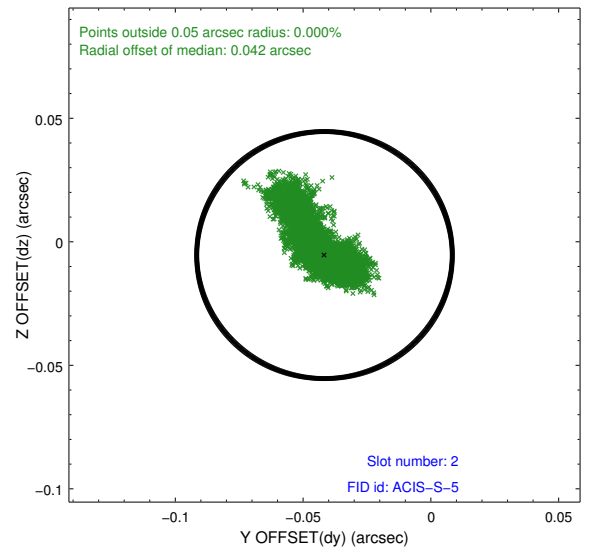
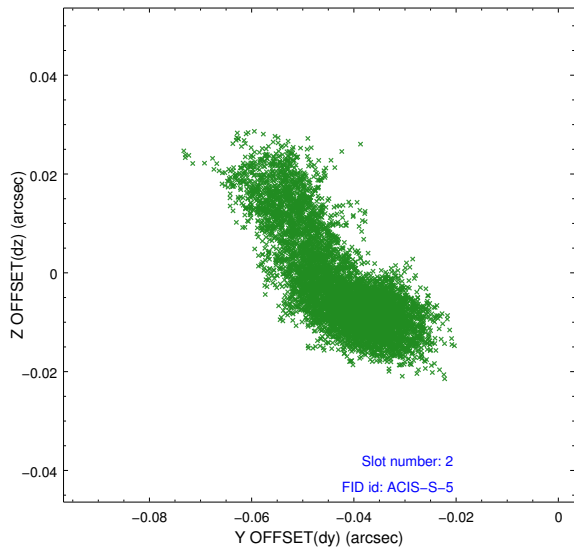
2.5.1 Slot 0



2.5.2 Slot 1



2.5.3 Slot 2



A Summary

A.1 Status

V&V Scientist	Beth Sundheim
V&V Date (YYYY-MM-DD)	2012.11.16
V&V Edition	1
V&V Disposition and Status	OK
V&V Charge Time	27.62

A.2 Comments