

# V&V Reference Report

## L2 ASCDS Version : 8.4.5

Observation 4208 - L2 Version 3  
Chandra X-Ray Center

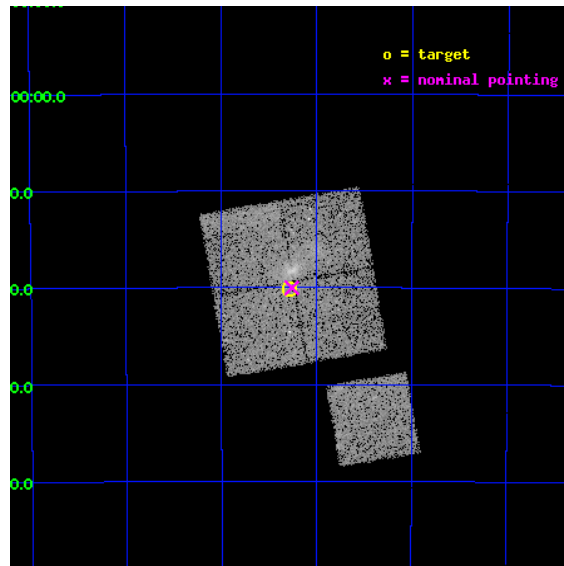
L2 Processing Date : Oct 31 2012

## Contents

<b>1</b>	<b>Front</b>	<b>2</b>
<b>2</b>	<b>OBI</b>	<b>3</b>
2.1	OBI . . . . .	3
2.1.1	Images . . . . .	3
2.1.2	Bias . . . . .	3
2.1.3	Parameters . . . . .	4
2.1.4	Events . . . . .	4
2.2	Compared Parameters . . . . .	5
2.3	Aspect . . . . .	6
2.4	Star Slots . . . . .	9
2.4.1	Slot 3 . . . . .	9
2.4.2	Slot 4 . . . . .	10
2.4.3	Slot 5 . . . . .	11
2.4.4	Slot 6 . . . . .	12
2.4.5	Slot 7 . . . . .	13
2.5	FID Slots . . . . .	14
2.5.1	Slot 0 . . . . .	14
2.5.2	Slot 1 . . . . .	15
2.5.3	Slot 2 . . . . .	16
<b>A</b>	<b>Summary</b>	<b>17</b>
A.1	Status . . . . .	17
A.2	Comments . . . . .	17

# 1 Front

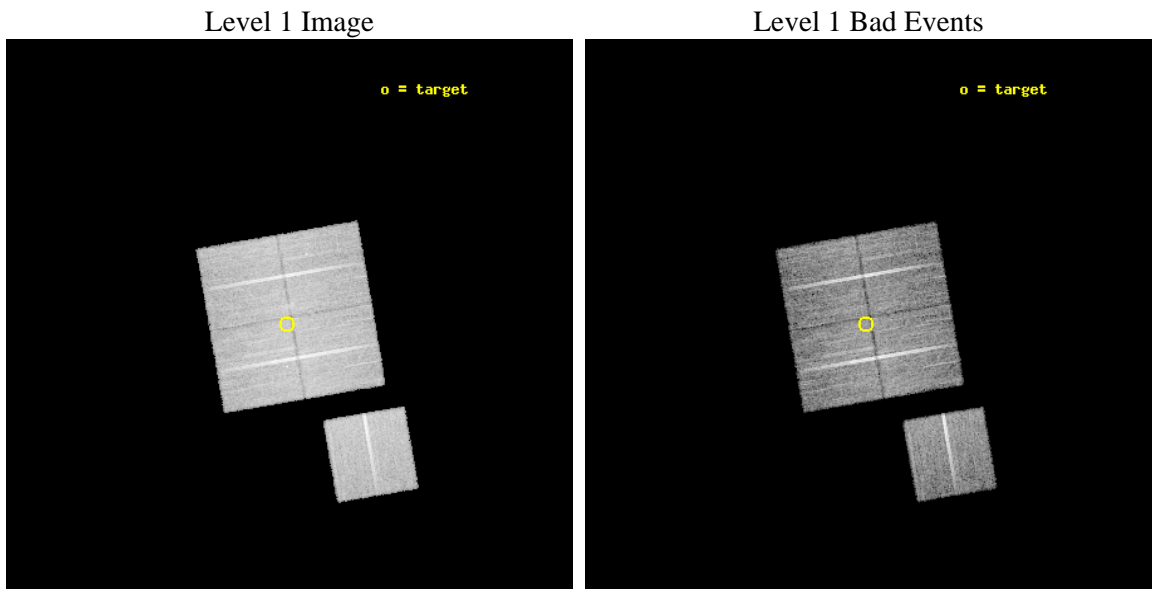
seq_num	800364	Sequence number
obs_id	4208	Observation id
title	CHANDRA OBSERVATIONS OF DLS SHEAR-SELECTED CLUSTERS	Proposal title
observer	Prof. John Hughes	Principal investigator
object	DLS J0522-4820	Source name
dtycycle	0	&#160
cycle	P	events from which exps? Prim/Second/Both
ra_targ	80.570833	Observer's specified target RA [deg]
dec_targ	-48.336111	Observer's specified target Dec [deg]
ra_nom	80.564954641807	Nominal RA [deg]
dec_nom	-48.333603742954	Nominal Dec [deg]
roll_nom	170.20428046606	Nominal Roll [deg]
revision	3	Processing version of data
ontime	20106.599961311	Sum of GTIs [s]
livetime	19843.892430553	Livetime [s]
ontime0	20106.599961311	Sum of GTIs [s]
ontime1	20106.599961311	Sum of GTIs [s]
ontime2	20106.599961311	Sum of GTIs [s]
ontime3	20106.599961311	Sum of GTIs [s]
ontime6	20100.318030864	Sum of GTIs [s]
l2events	47727	Number of level 2 events



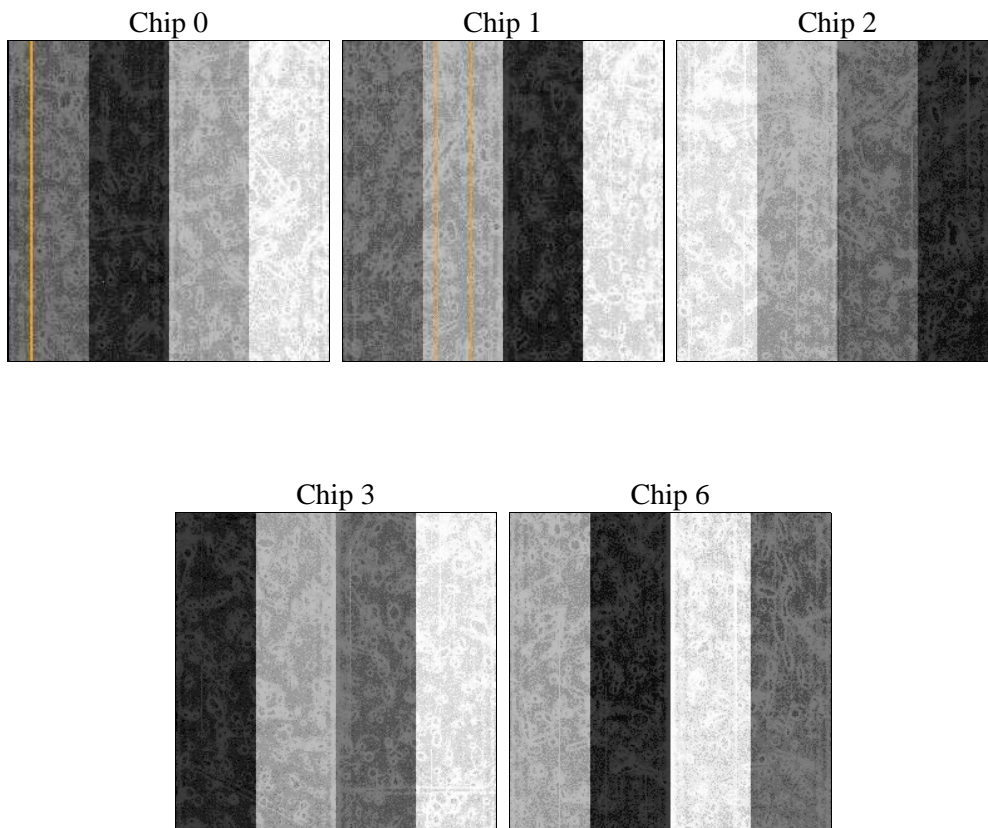
## 2 OBI

### 2.1 OBI

#### 2.1.1 Images



#### 2.1.2 Bias



### 2.1.3 Parameters

obi_num	1	Obi number	sched_exp_time	19968.349000	[s] Scheduled observation exposure time
ascdsver	8.4.5	Processing system revision	ontime	20106.599961311	Sum of GTIs [s]
caldbver	4.5.2	&#160	ontime0	20106.599961311	Sum of GTIs [s]
date	2012-10-31T03:50:11	Date and time of file creation	ontime1	20106.599961311	Sum of GTIs [s]
revision	3	Processing version of data	ontime2	20106.599961311	Sum of GTIs [s]
			ontime3	20106.599961311	Sum of GTIs [s]
			ontime6	20100.318030864	Sum of GTIs [s]
			l1events	499919	Number of level 1 events

### 2.1.4 Events

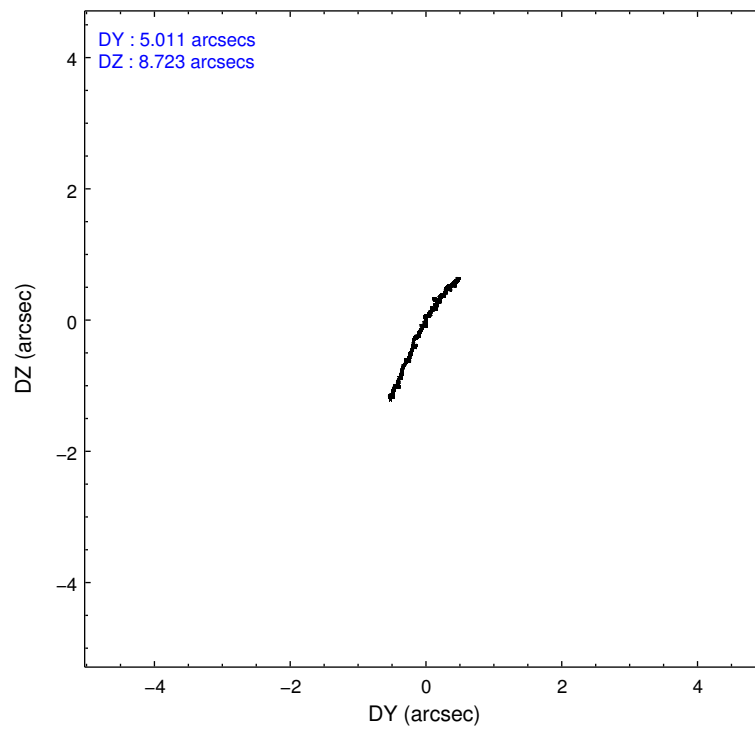
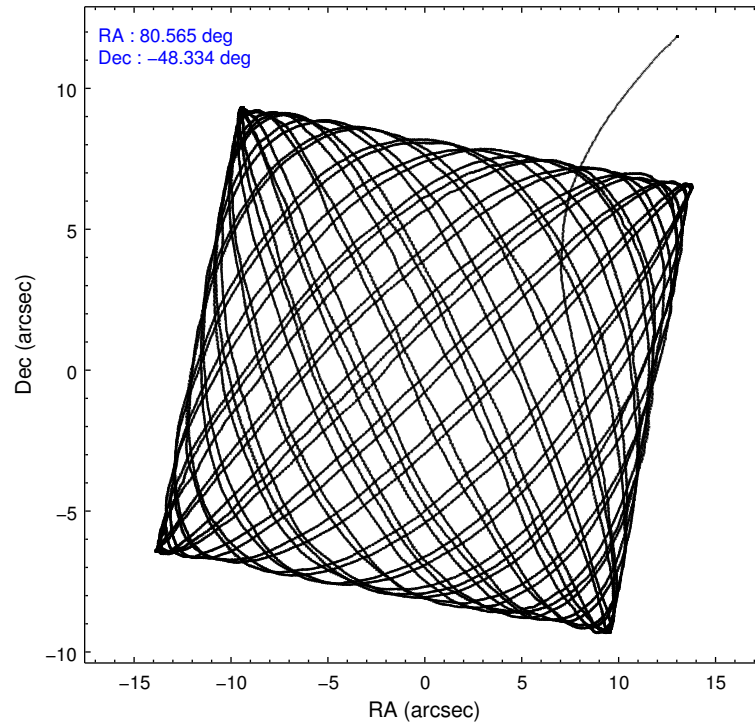
	ccd 0	ccd 1	ccd 2	ccd 3	ccd 6
level 1 events	94506	95658	105604	103614	100537
rejected events	82256	82888	95385	93105	89751
rejected %	87%	86%	90%	89%	89%

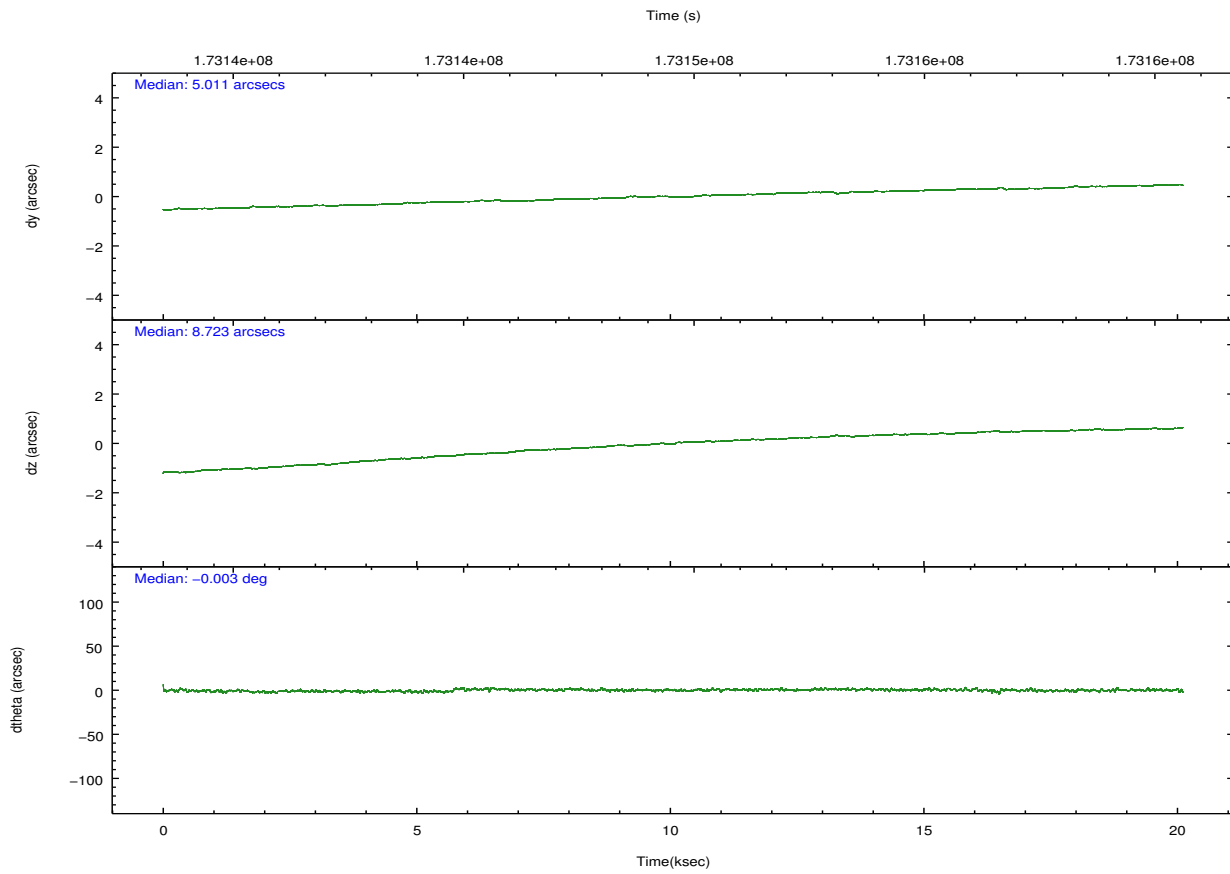
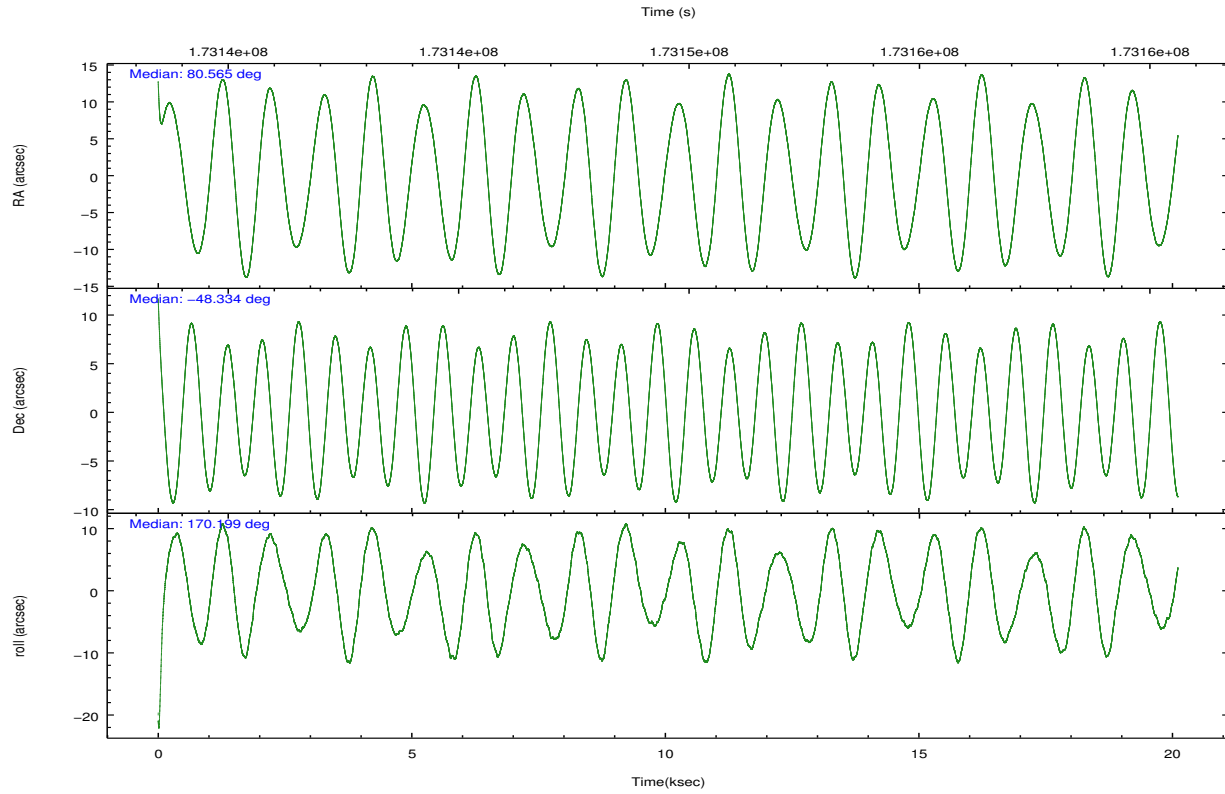
	ccd 0	ccd 1	ccd 2	ccd 3	ccd 6
grade 0 events	5544	5557	4122	4486	4222
	5%	5%	3%	4%	4%
grade 1 events	49	48	42	66	47
	0%	0%	0%	0%	0%
grade 2 events	2566	2575	2290	2131	2272
	2%	2%	2%	2%	2%
grade 3 events	1270	1428	1157	1096	1223
	1%	1%	1%	1%	1%
grade 4 events	1181	1322	1170	1180	1205
	1%	1%	1%	1%	1%
grade 5 events	3622	3788	3326	3924	3912
	3%	3%	3%	3%	3%
grade 6 events	2041	2274	1823	1907	2206
	2%	2%	1%	1%	2%
grade 7 events	78233	78666	91674	88824	85450
	82%	82%	86%	85%	84%

## 2.2 Compared Parameters

Parameter	Planned	Actual	Parameter	Planned	Actual
Instrument	ACIS	ACIS	Obspar format version number	7	7
Detector	ACIS-01236	ACIS-01236	Obspar file type	PREDICTED	ACTUAL
Grating	NONE	NONE	Obspar update status	NONE	UPDATED
Data mode	VFAINT	VFAINT	Number of optional ACIS chips dropped	0	0
Observation mode	POINTING	POINTING	On-chip summing requested	N	N
[deg] Pointing RA	80.603561	80.56495464180671	Subarray requested	NONE	NONE
[deg] Pointing Dec	-48.324040	-48.33360374295352	Alternating exposures requested	N	N
[deg] Pointing Roll	170.024445	170.2042804660628	[s] Primary exposure time	0.000000	3.1
[mm] SIM focus pos	-0.782348	-0.7809083437167272			
[mm] SIM defocus	0	0.001439871863259334			
[mm] SIM translation stage pos	-233.592463	-233.5874344608287			
[mm] SIM translation stage offset	0	-0.005018542100998502			
[s] Observation start time (MET)	173139628.184000	173138321.69054			
Observation start date	2003-06-27T22:19:24	2003-06-27T21:58:41			
[s] Observation end time (MET)	173159596.184000	173159910.75396			
Observation end date	2003-06-28T03:52:12	2003-06-28T03:58:30			
Read mode	TIMED	TIMED			

## 2.3 Aspect





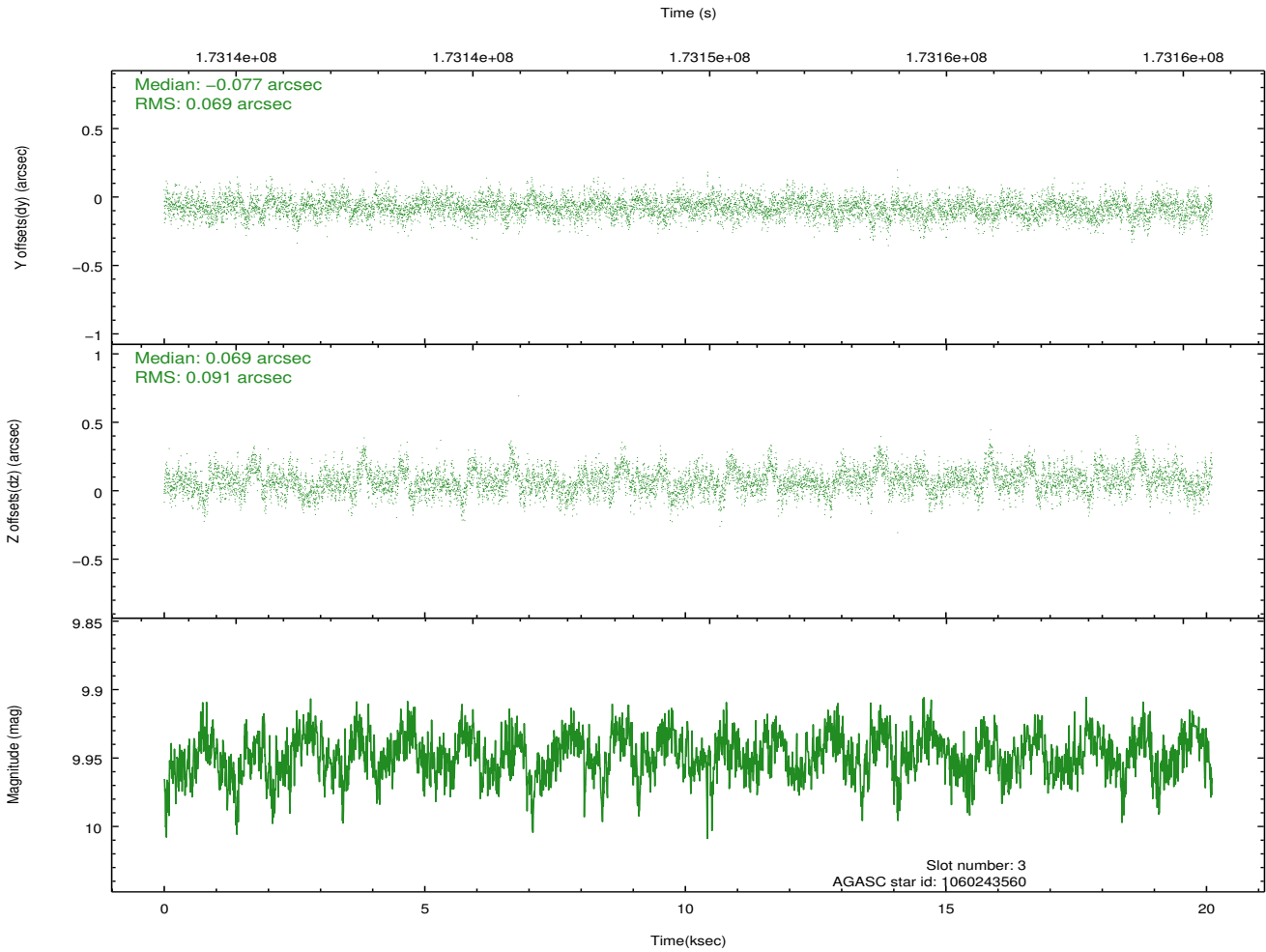
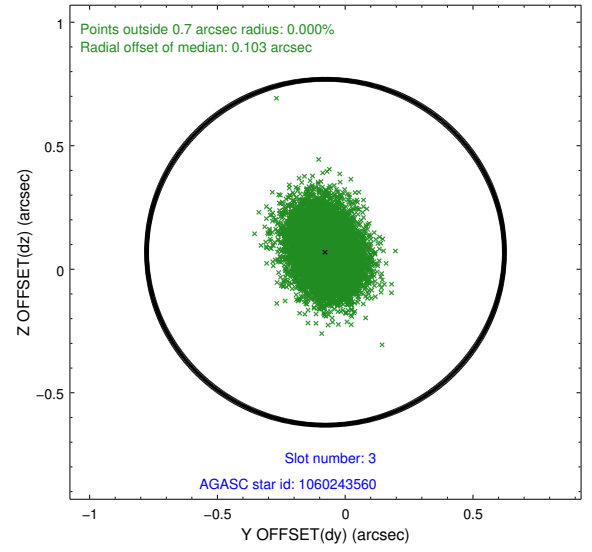
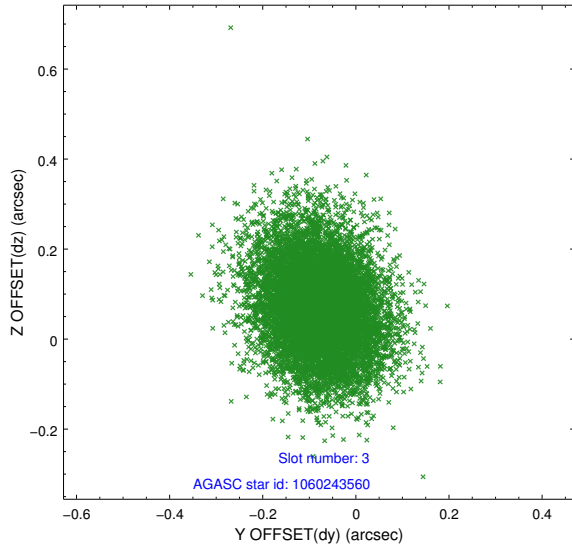
### Slot Statistics

slot	status	id	mag	n_pts	med_dy	med_dz	dr1	dr2	ra	dec	mean_y	mean_z
0	FID	ACIS-I-1	7.24	4905	-0.040	0.068	0.028	0.064	0.000000	0.000000	934.70	-831.97
1	FID	ACIS-I-2	7.14	4905	-0.127	-0.055	0.029	0.040	0.000000	0.000000	-759.36	-838.64
2	FID	ACIS-I-4	7.18	4905	0.066	0.064	0.044	0.054	0.000000	0.000000	2154.59	1067.75
3	GUIDE	1060243560	9.95	9806	-0.077	0.069	0.120	0.202	80.304631	-47.755333	1067.32	-1889.21
4	GUIDE	1060244664	9.73	9801	0.008	-0.102	0.096	0.154	80.384345	-48.536048	382.54	842.99
5	GUIDE	1060247176	9.65	9800	-0.002	0.144	0.104	0.170	80.874820	-48.218455	-574.92	-485.41
6	GUIDE	1060247920	9.66	9811	0.048	-0.052	0.109	0.182	81.470195	-48.655540	-2238.42	829.84
7	GUIDE	1060245832	9.60	9803	0.022	-0.064	0.092	0.148	81.474615	-48.640010	-2239.92	773.09

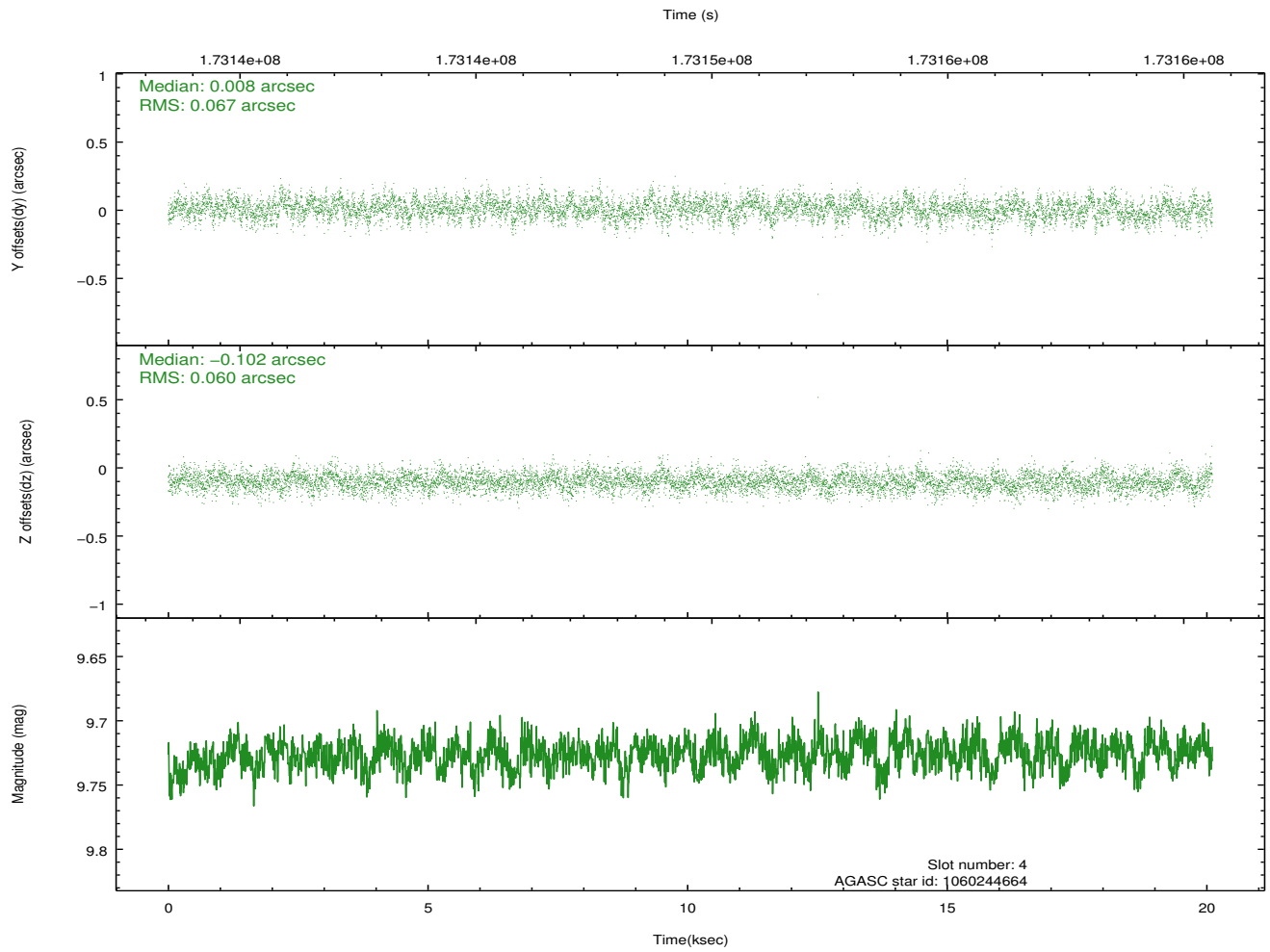
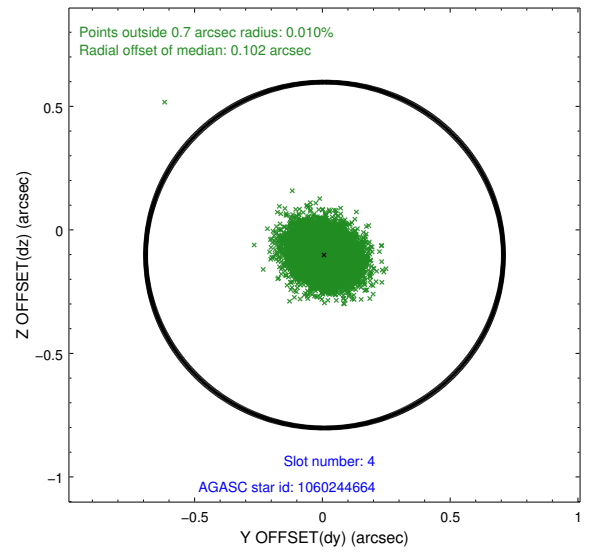
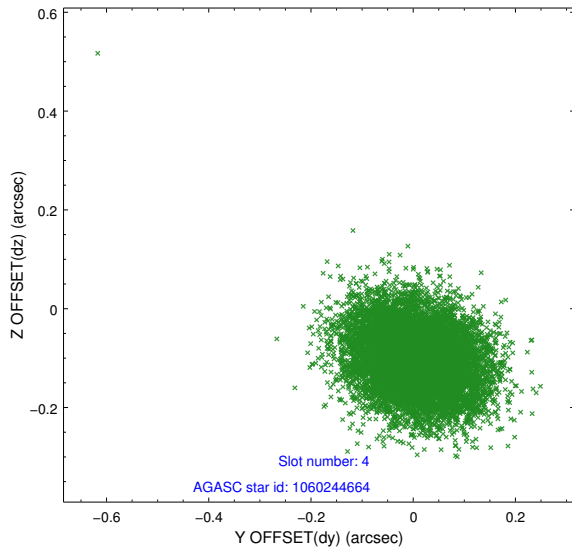
∞

## 2.4 Star Slots

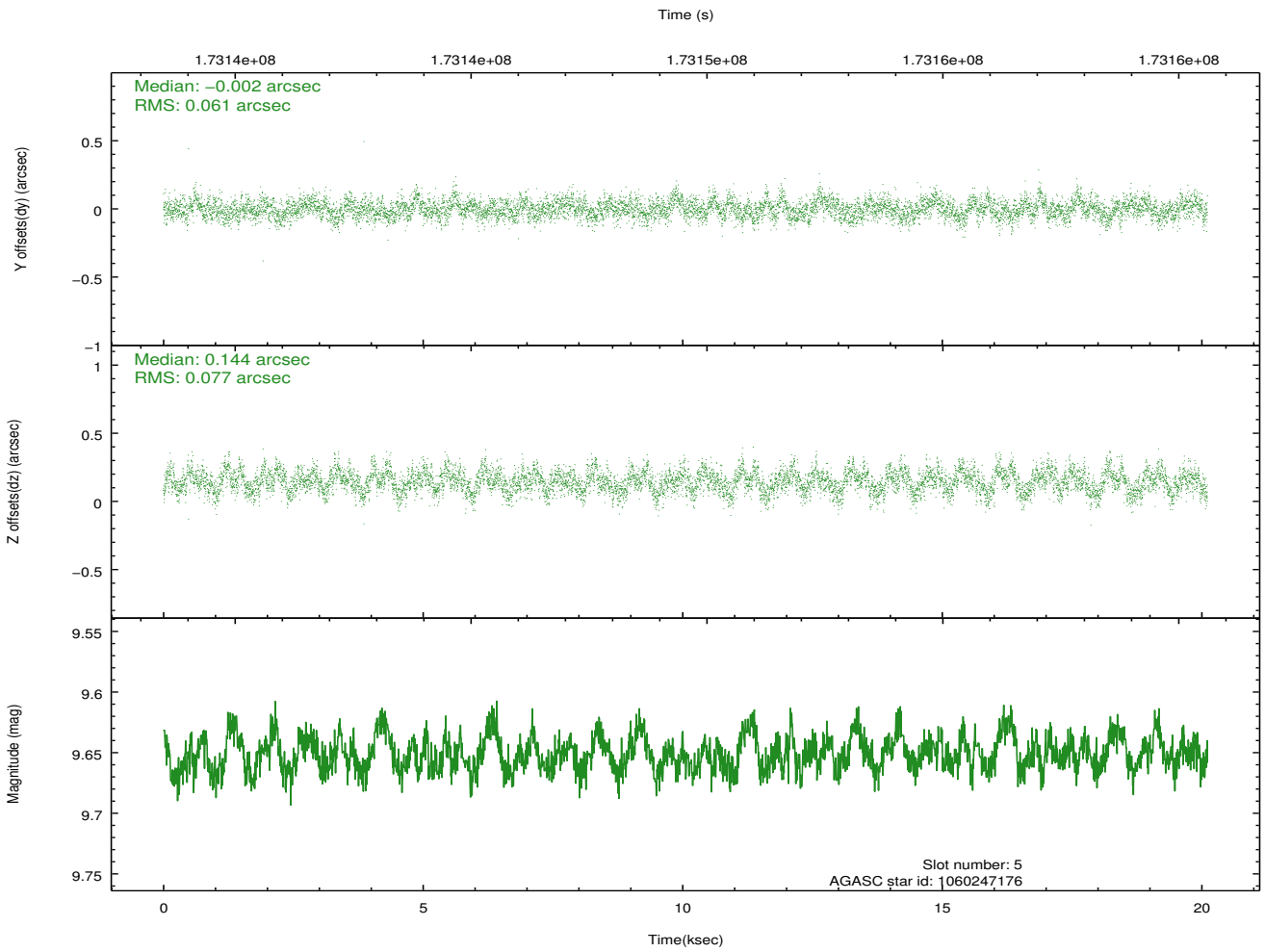
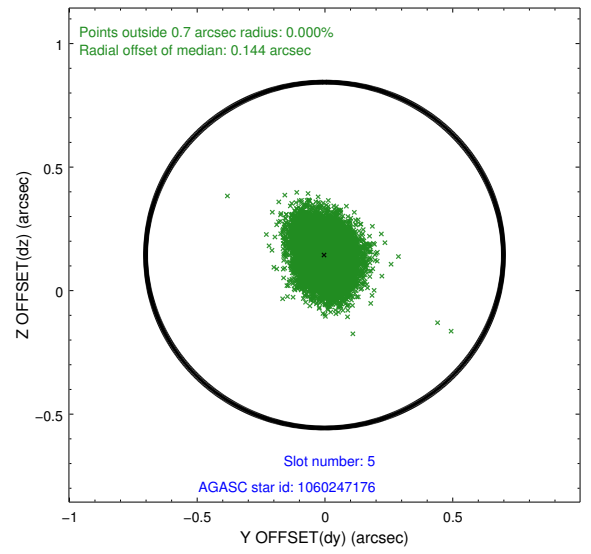
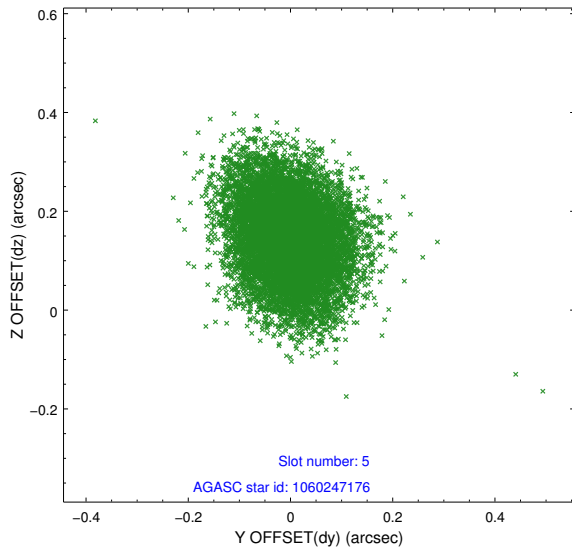
### 2.4.1 Slot 3



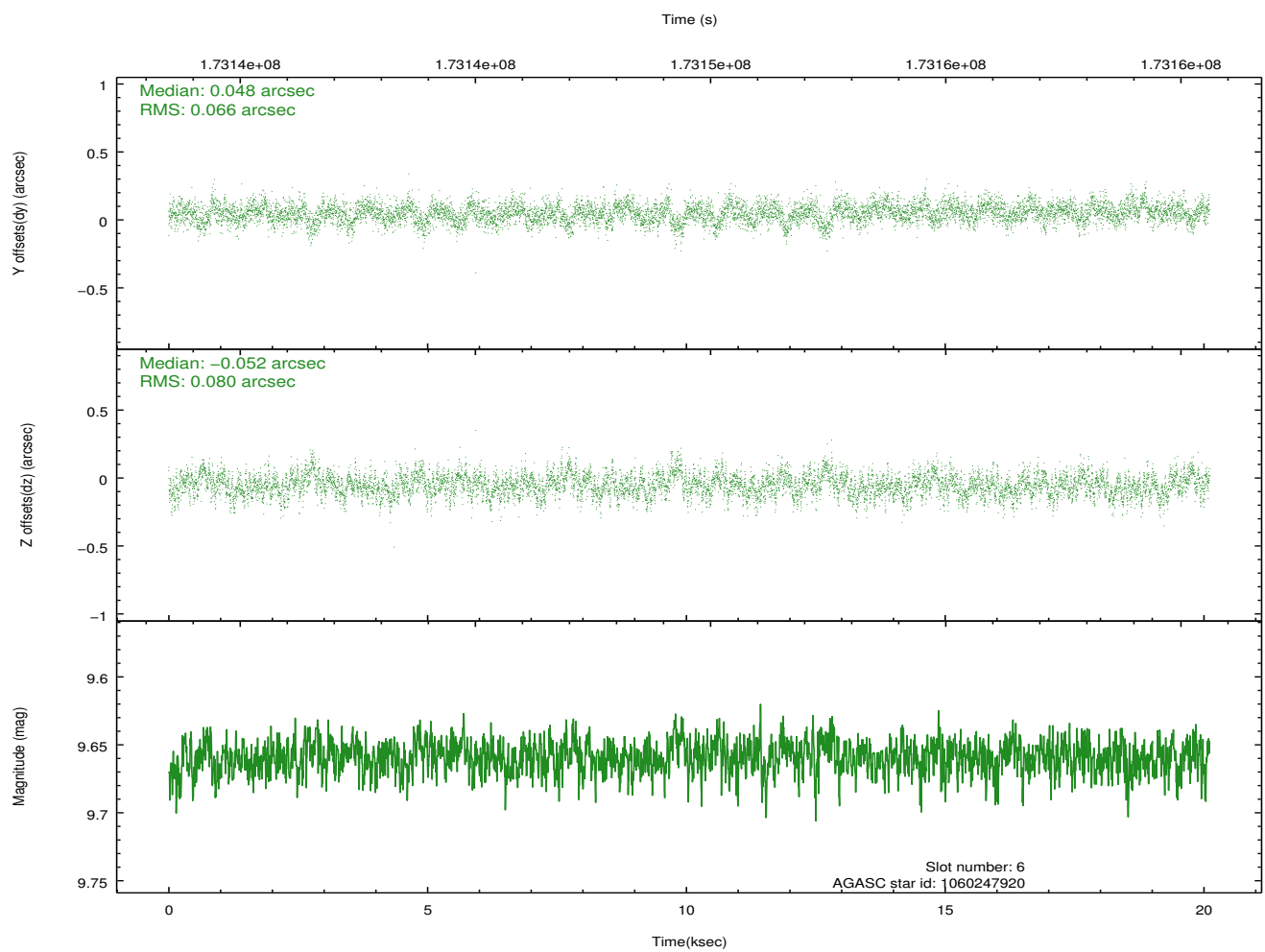
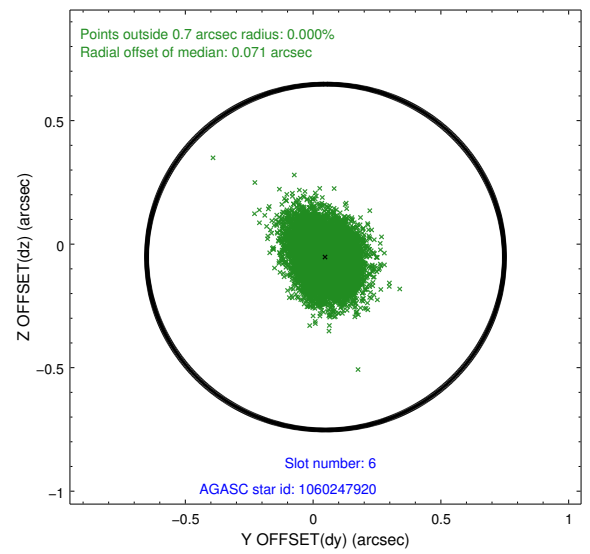
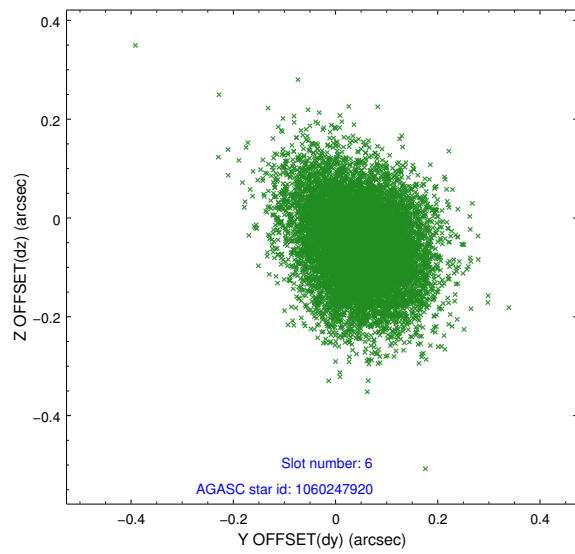
### 2.4.2 Slot 4



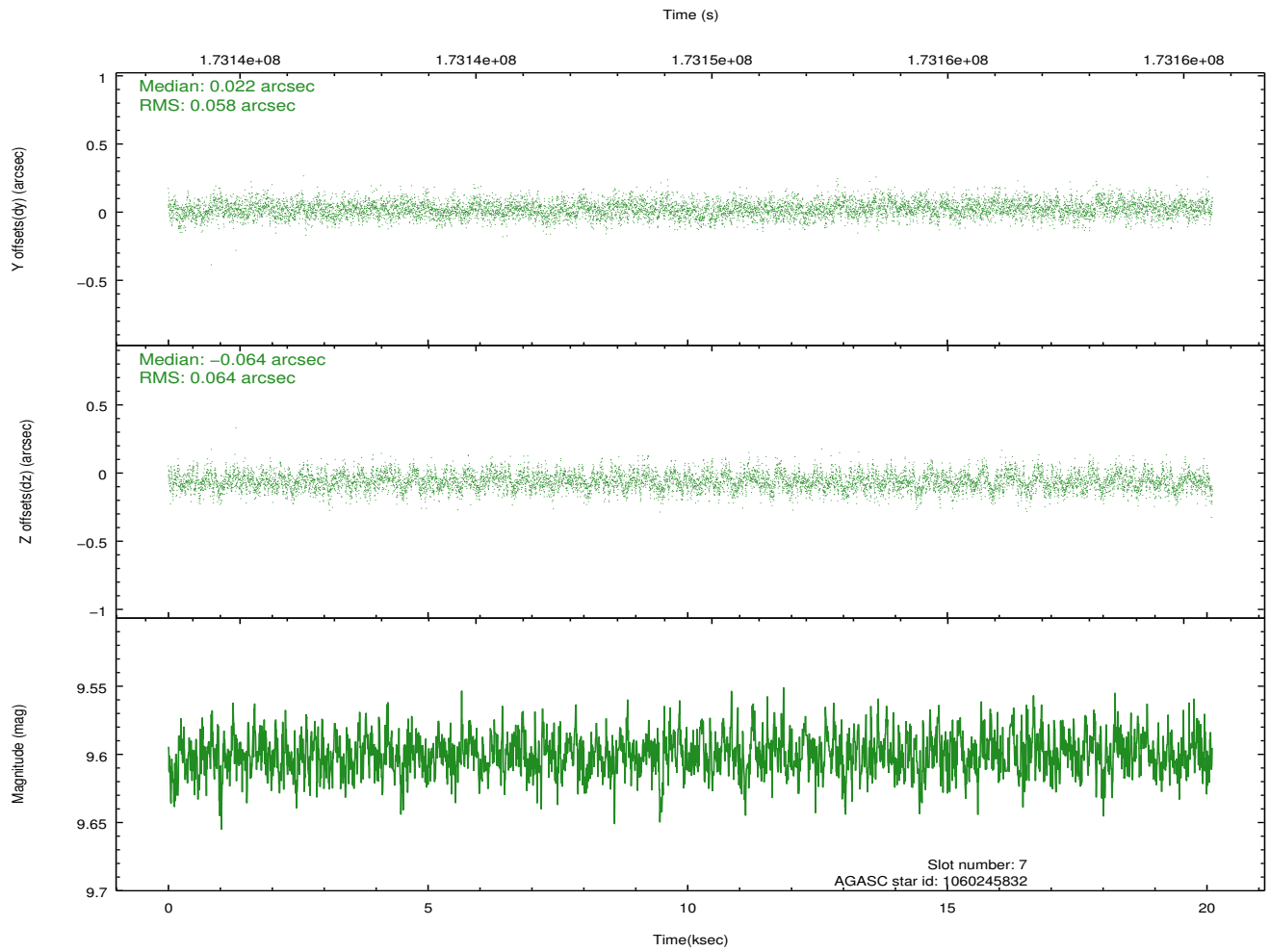
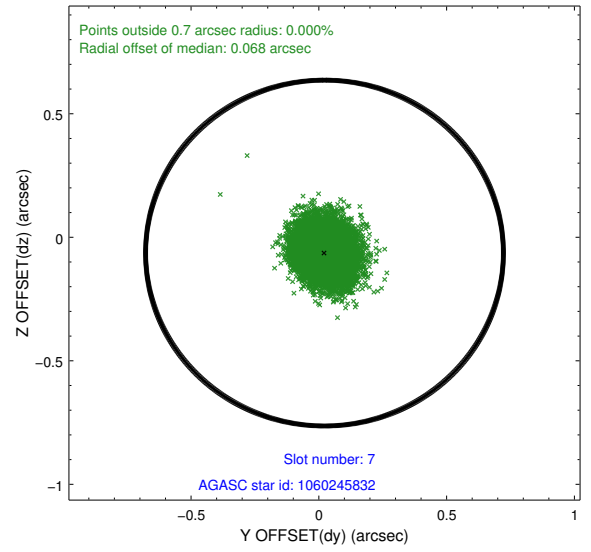
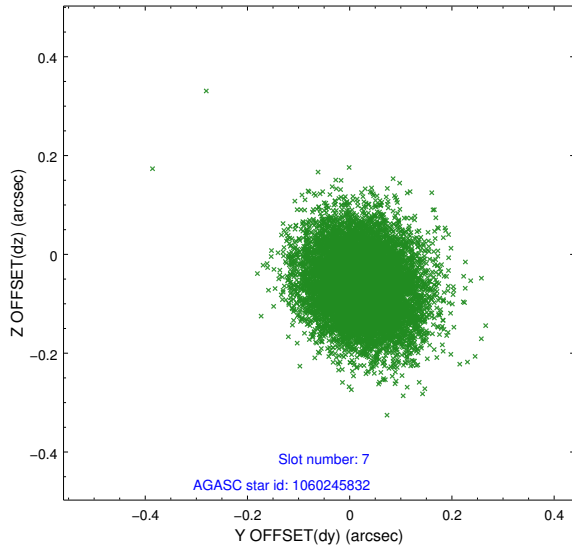
### 2.4.3 Slot 5



## 2.4.4 Slot 6

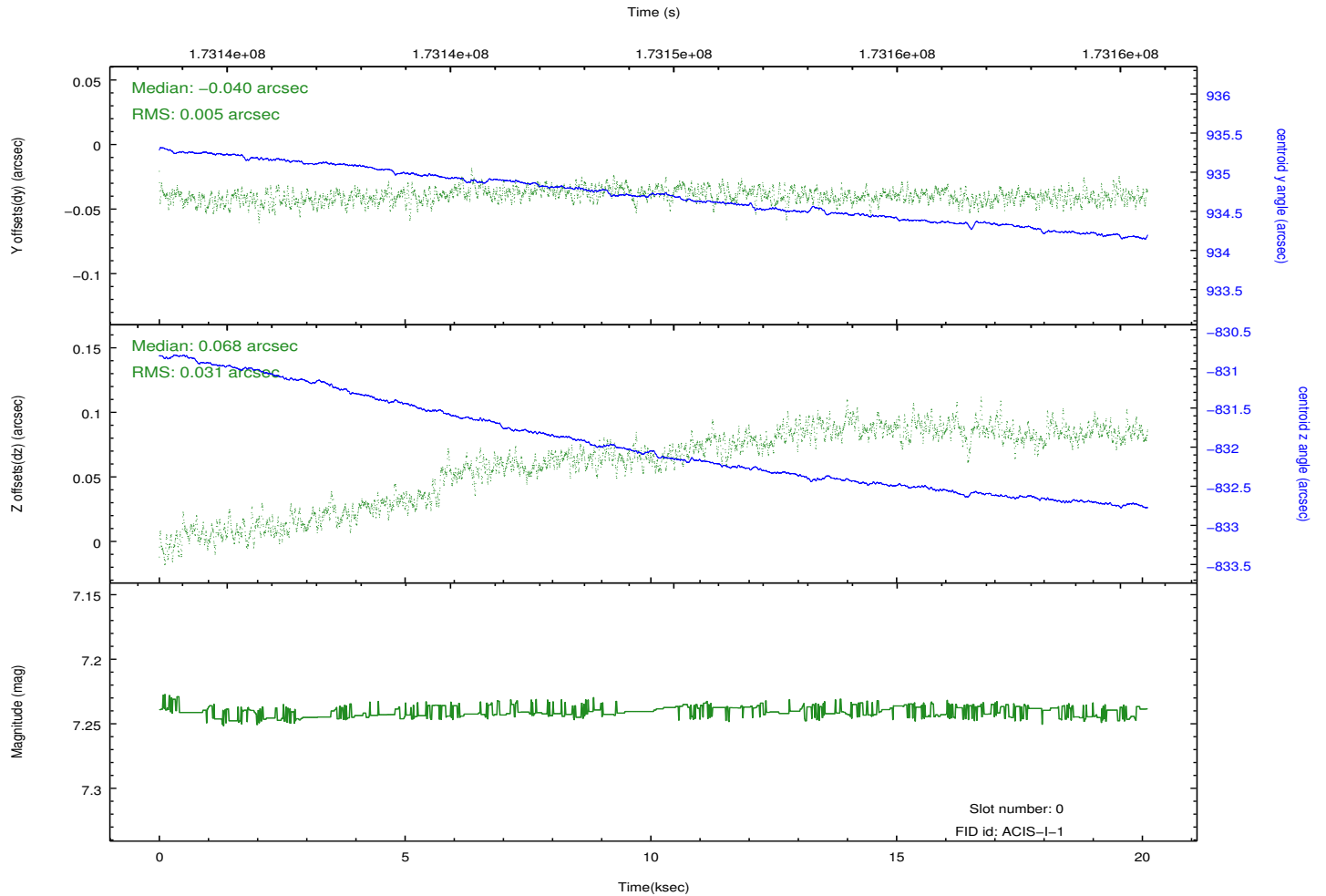
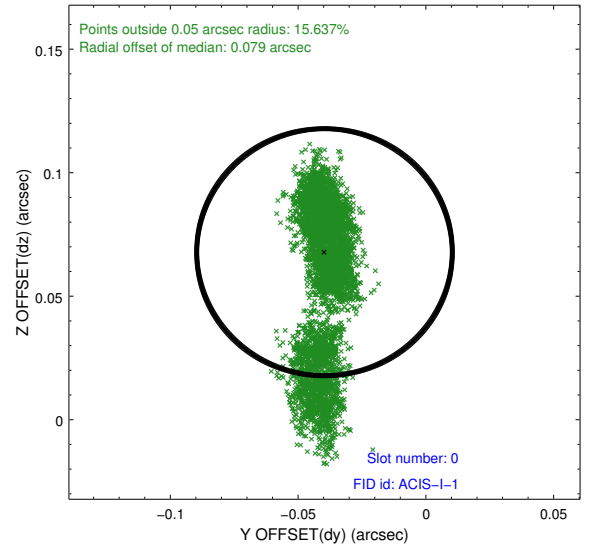
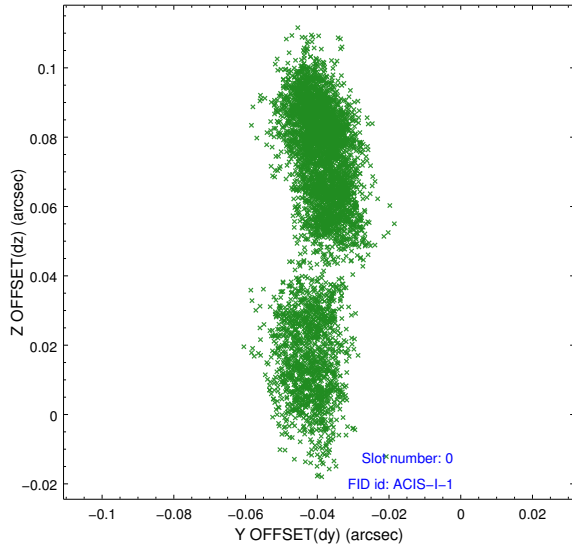


### 2.4.5 Slot 7

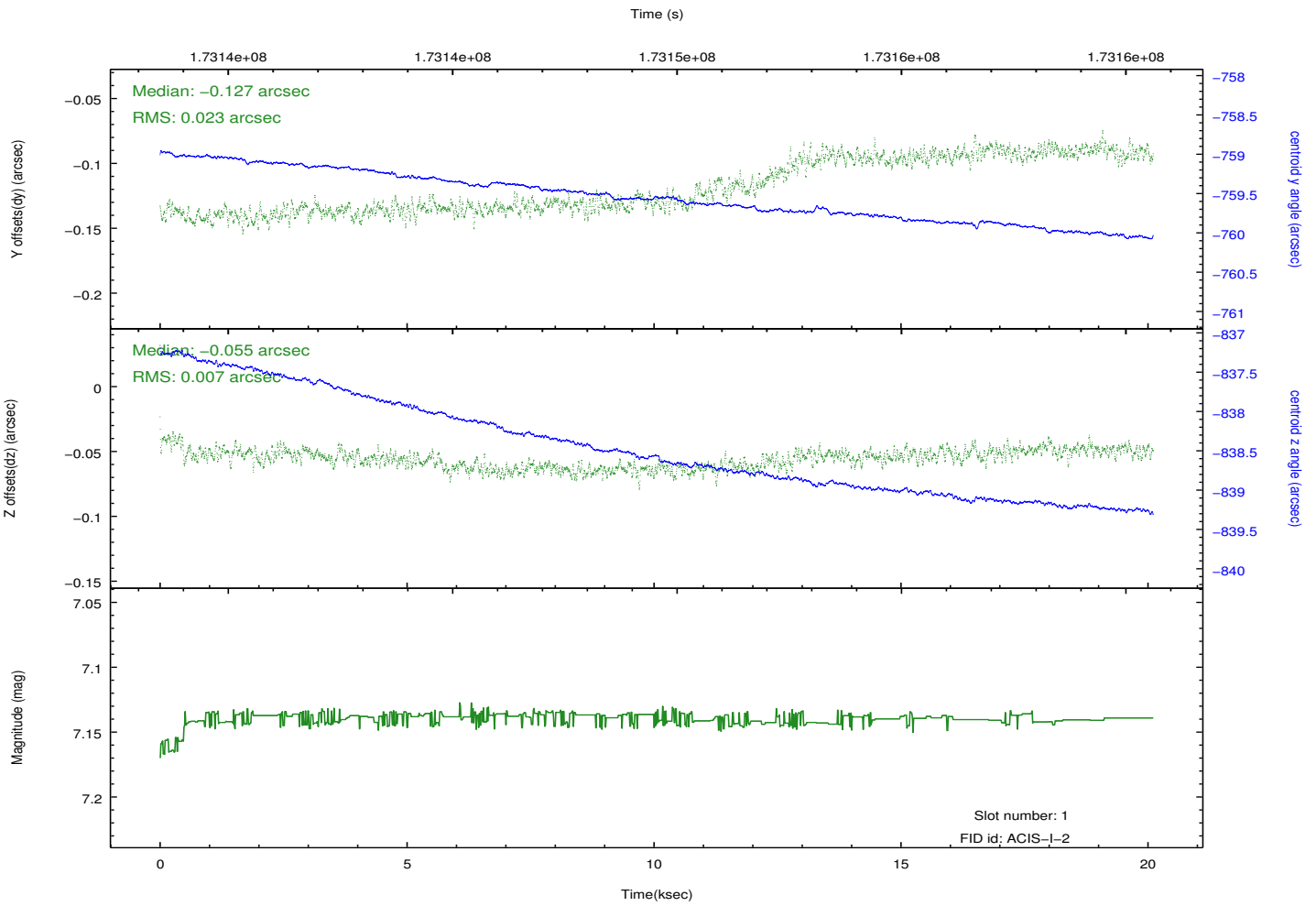
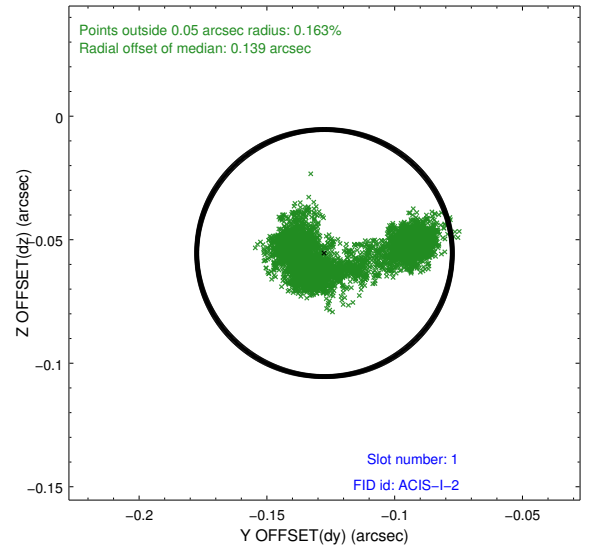
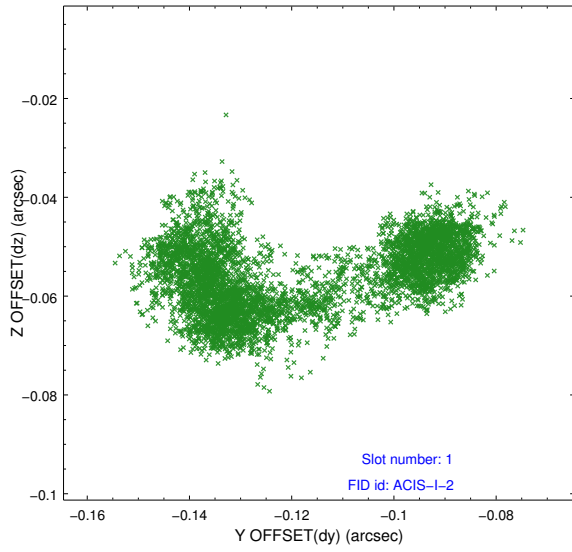


## 2.5 FID Slots

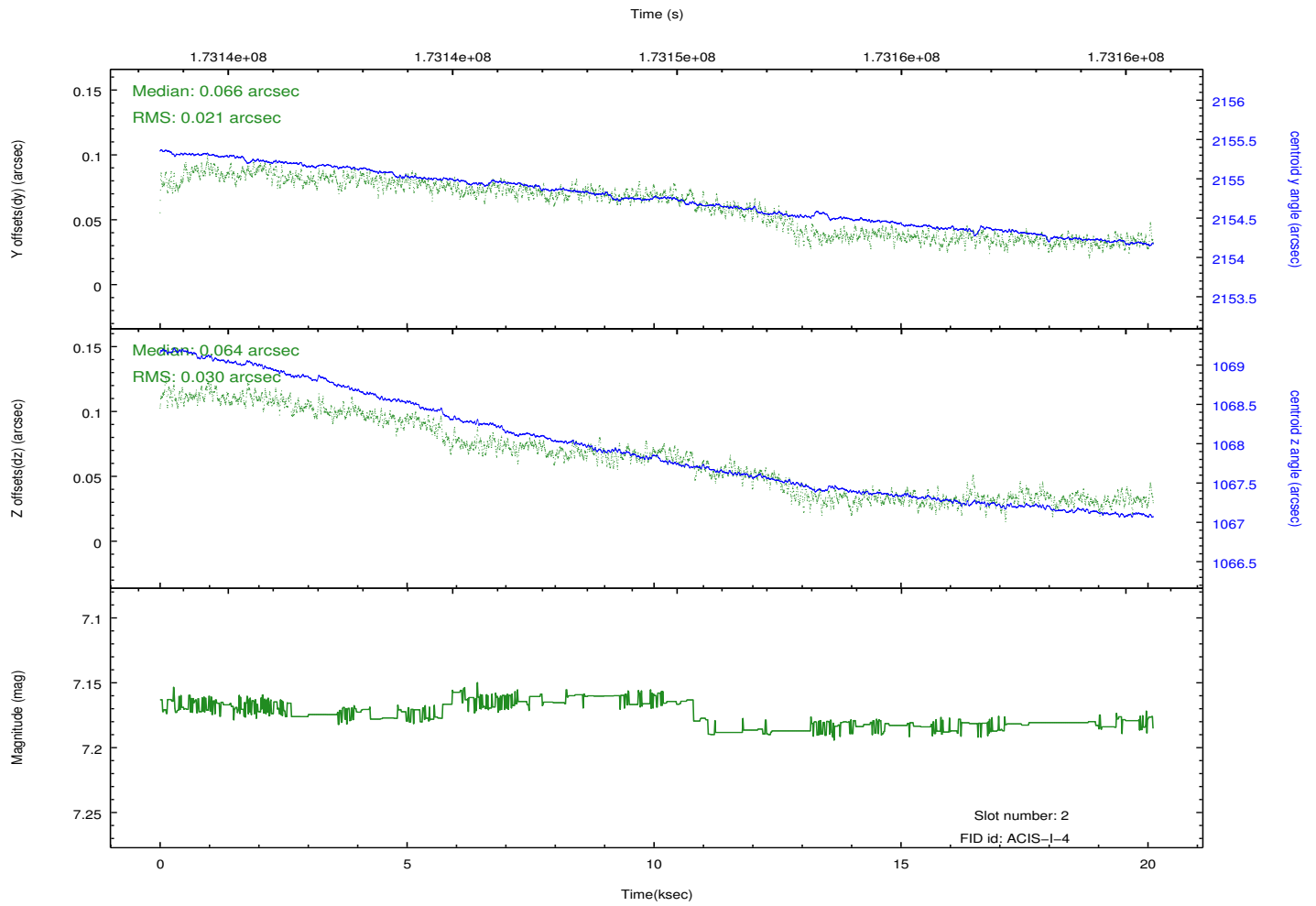
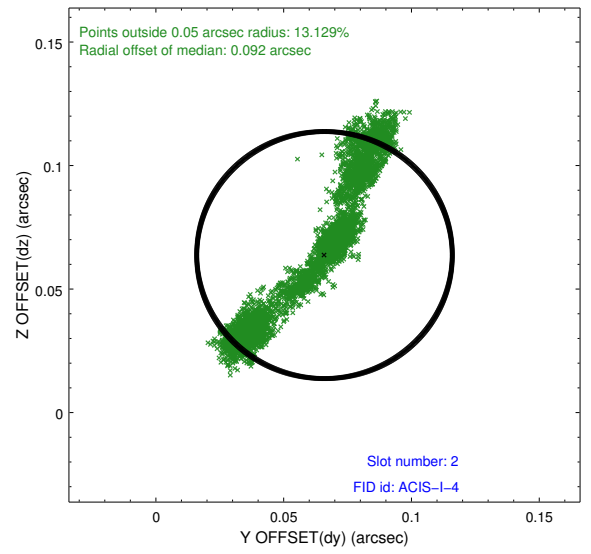
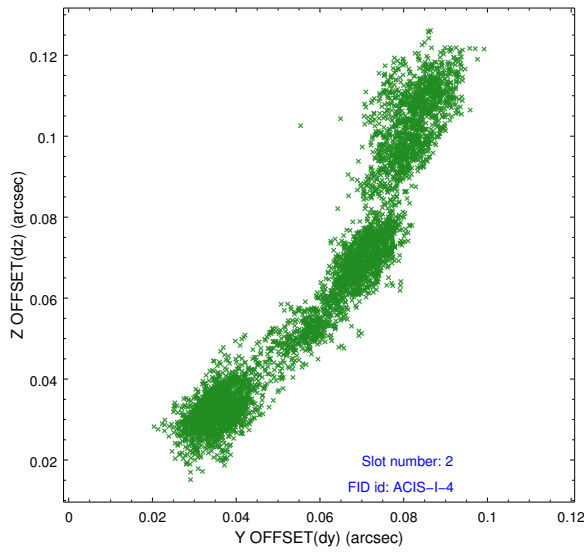
### 2.5.1 Slot 0



## 2.5.2 Slot 1



### 2.5.3 Slot 2



# A Summary

## A.1 Status

V&V Scientist	Jen Lauer
V&V Date (YYYY-MM-DD)	2012.11.16
V&V Edition	1
V&V Disposition and Status	OK
V&V Charge Time	20.106

## A.2 Comments