

V&V Reference Report

L2 ASCDS Version : 8.4.5

Observation 4448 - L2 Version 3
Chandra X-Ray Center

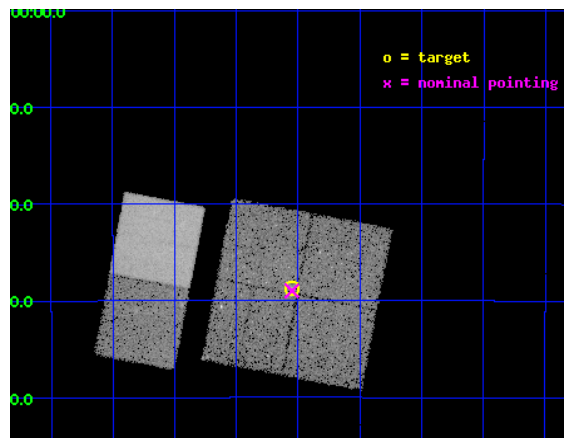
L2 Processing Date : Nov 2 2012

Contents

1	Front	2
2	OBI	3
2.1	OBI	3
2.1.1	Images	3
2.1.2	Bias	3
2.1.3	Parameters	4
2.1.4	Events	4
2.2	Compared Parameters	5
2.3	Aspect	6
2.4	Star Slots	9
2.4.1	Slot 3	9
2.4.2	Slot 4	10
2.4.3	Slot 5	11
2.4.4	Slot 6	12
2.4.5	Slot 7	13
2.5	FID Slots	14
2.5.1	Slot 0	14
2.5.2	Slot 1	15
2.5.3	Slot 2	16
A	Summary	17
A.1	Status	17
A.2	Comments	17

1 Front

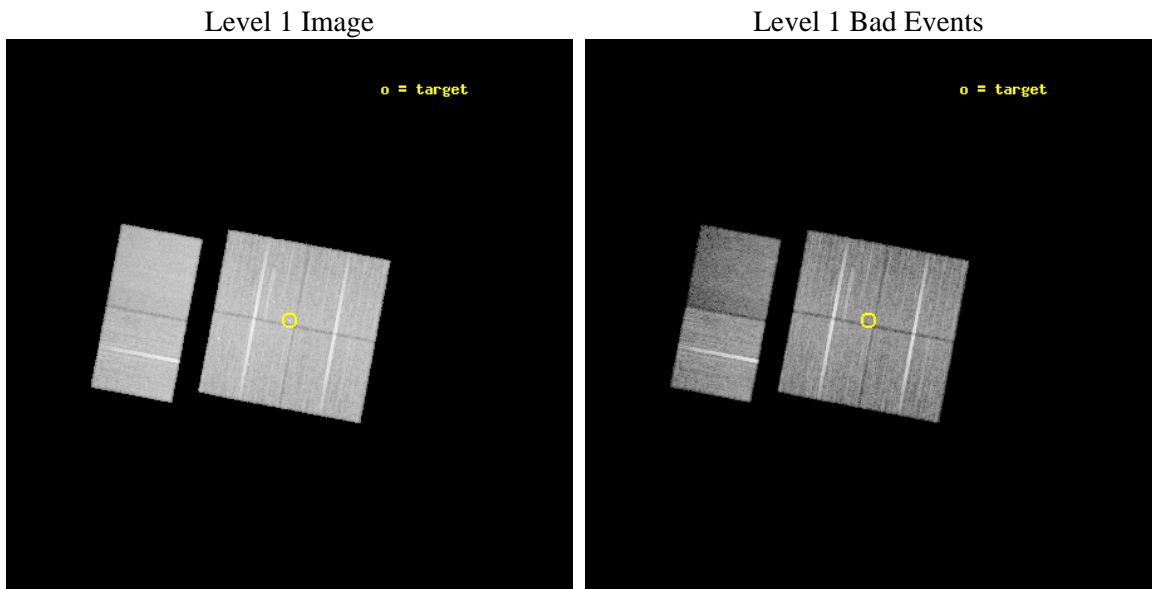
seq_num	600332	Sequence number
obs_id	4448	Observation id
title	IDENTIFYING LOW LUMINOSITY SOURCES IN THE NEAREST DWARF SPHEROID GALAXIES	Proposal title
observer	Dr Gavin Ramsay	Principal investigator
object	SAGITTARIUS DSPH	Source name
dtcycle	0	
cycle	P	events from which exps? Prim/Second/Both
ra_targ	283.76375	Observer's specified target RA [deg]
dec_targ	-30.478611	Observer's specified target Dec [deg]
ra_nom	283.76260247065	Nominal RA [deg]
dec_nom	-30.483163171212	Nominal Dec [deg]
roll_nom	280.79093069896	Nominal Roll [deg]
revision	3	Processing version of data
ontime	30134.358887553	Sum of GTIs [s]
livetime	29752.779490587	Livetime [s]
ontime0	30137.599887729	Sum of GTIs [s]
ontime1	30137.599887729	Sum of GTIs [s]
ontime2	30127.876966923	Sum of GTIs [s]
ontime3	30134.358887553	Sum of GTIs [s]
ontime6	30137.599887729	Sum of GTIs [s]
ontime7	30137.599887729	Sum of GTIs [s]
l2events	133551	Number of level 2 events



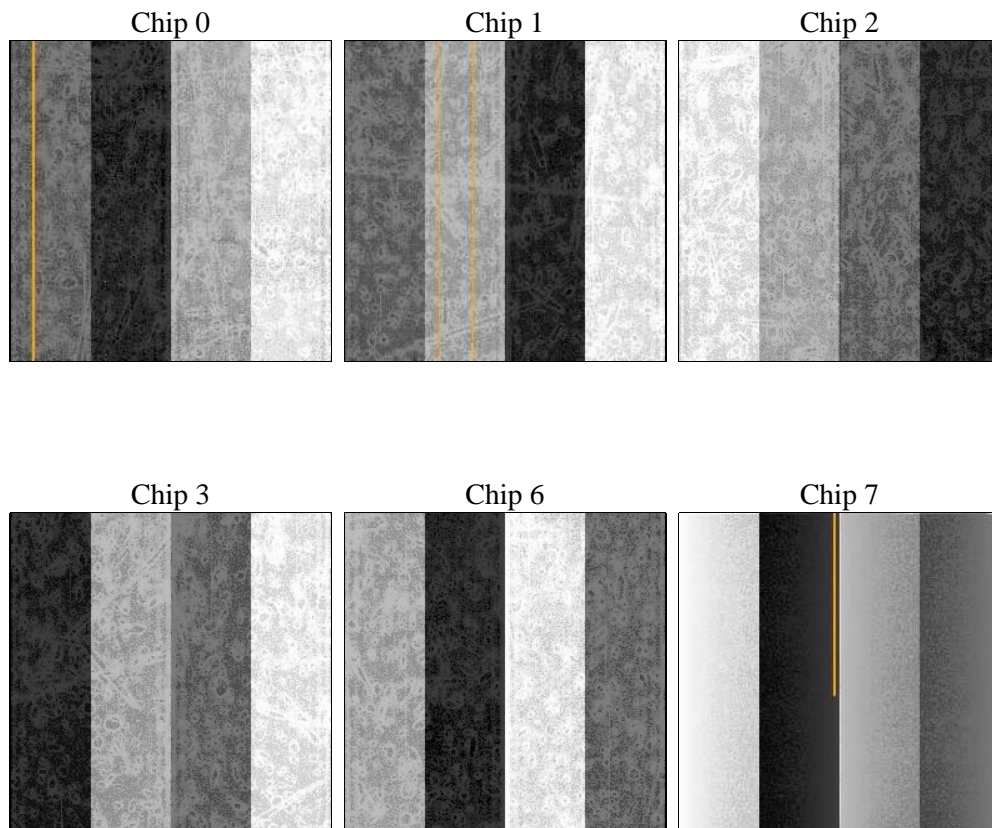
2 OBI

2.1 OBI

2.1.1 Images



2.1.2 Bias



2.1.3 Parameters

obi_num	0	Obi number	sched_exp_time	30000.000000	[s] Scheduled observation exposure time
ascdsver	8.4.5	Processing system revision	ontime	30134.358887553	Sum of GTIs [s]
caldsver	4.5.2	 	ontime0	30137.599887729	Sum of GTIs [s]
date	2012-11-02T18:12:02	Date and time of file creation	ontime1	30137.599887729	Sum of GTIs [s]
revision	3	Processing version of data	ontime2	30127.876966923	Sum of GTIs [s]
			ontime3	30134.358887553	Sum of GTIs [s]
			ontime6	30137.599887729	Sum of GTIs [s]
			ontime7	30137.599887729	Sum of GTIs [s]
			l1events	871917	Number of level 1 events

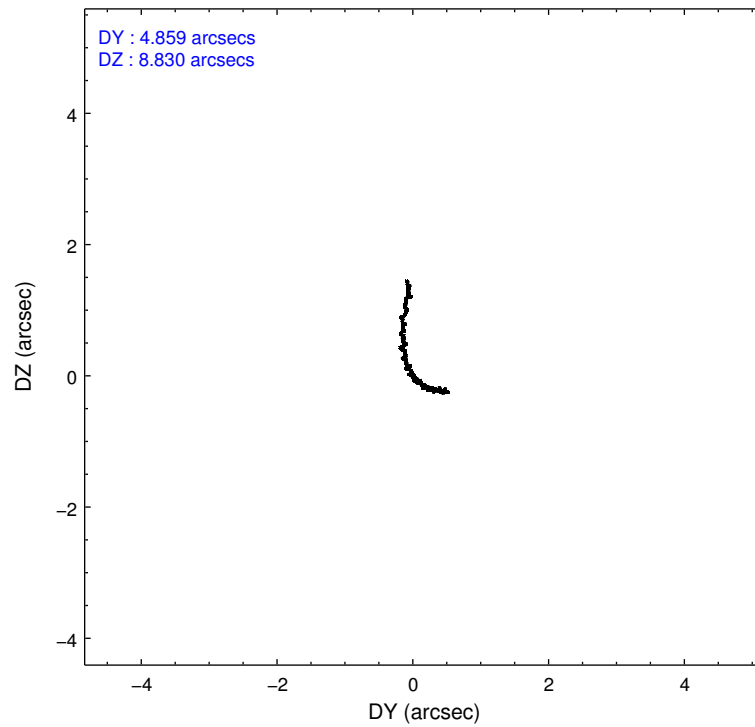
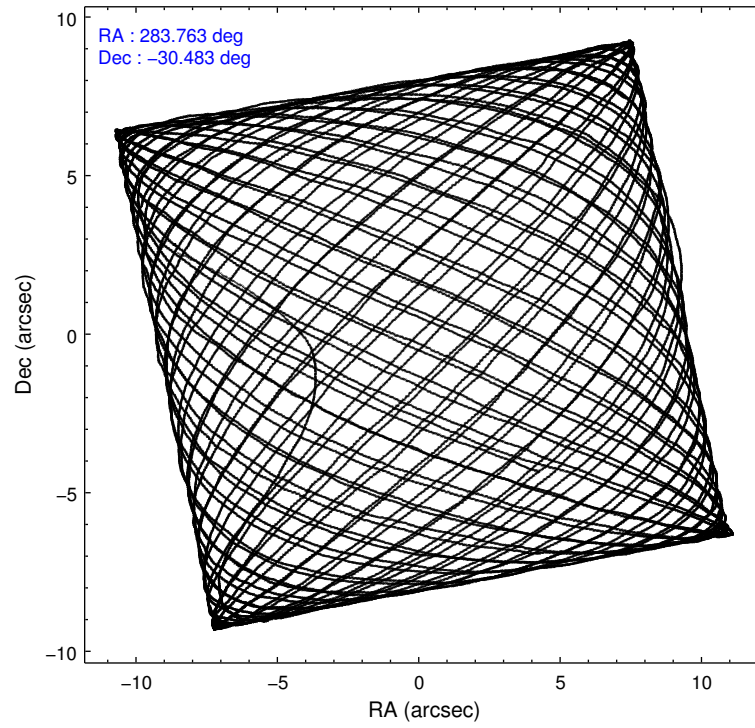
2.1.4 Events

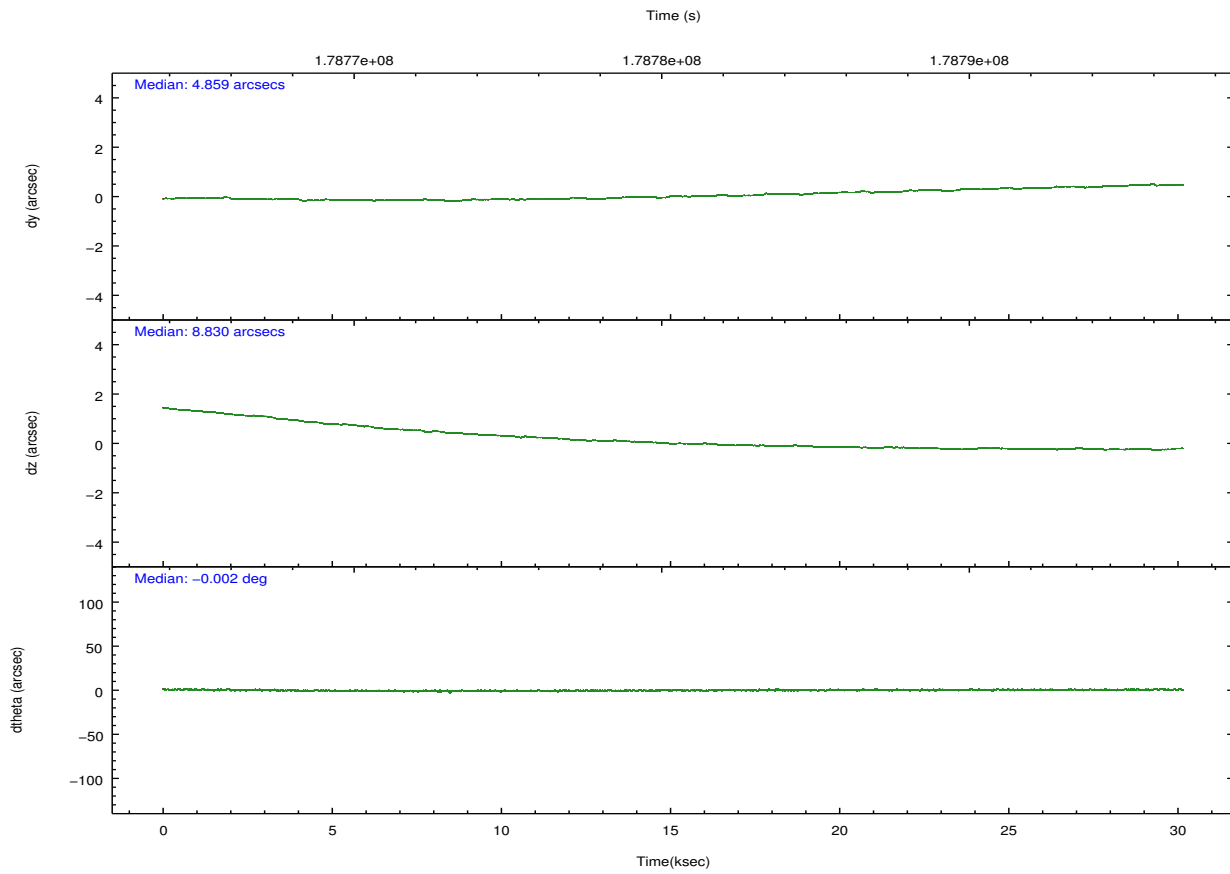
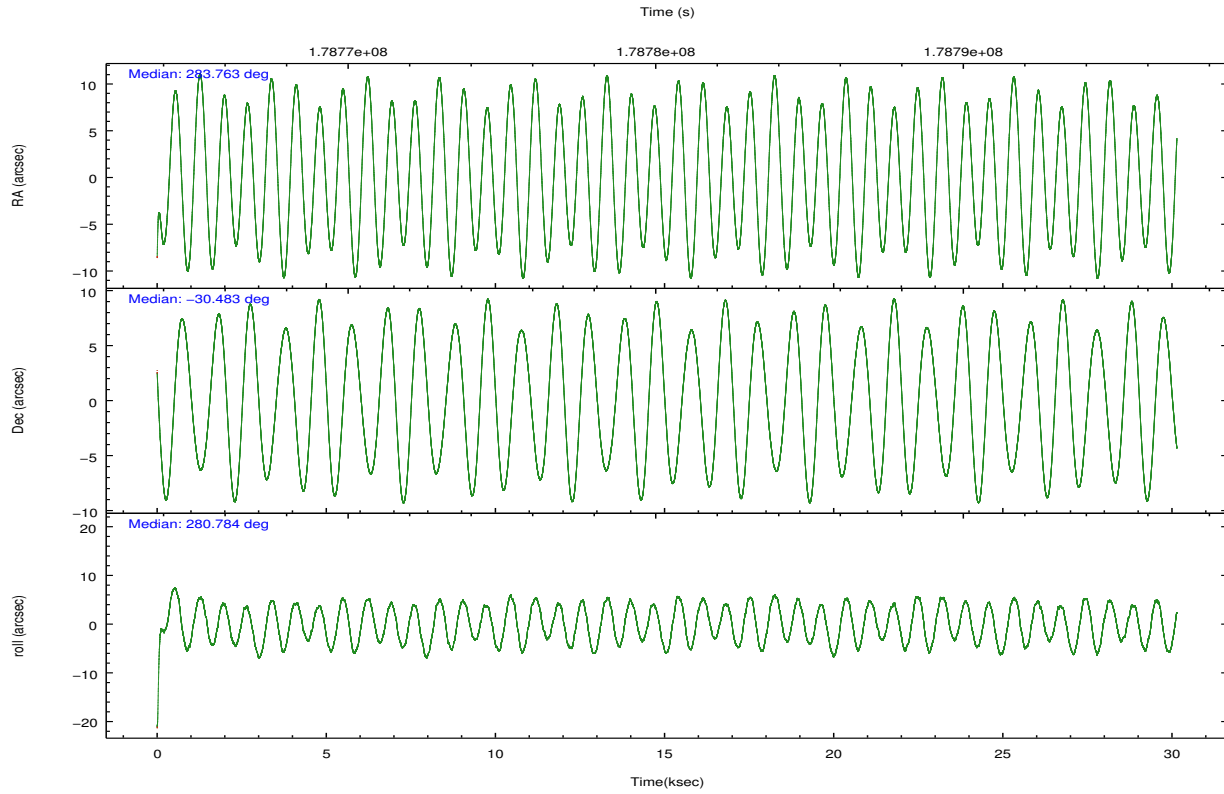
	ccd 0	ccd 1	ccd 2	ccd 3	ccd 6	ccd 7		ccd 0	ccd 1	ccd 2	ccd 3	ccd 6	ccd 7
level 1 events	135000	139380	155518	147520	154207	140292	grade 0 events	6412	6703	6785	6700	6359	7631
rejected events	119452	122704	139758	131953	138010	70799		4%	4%	4%	4%	4%	5%
rejected %	88%	88%	89%	89%	89%	50%	grade 1 events	80	69	77	79	82	153
								0%	0%	0%	0%	0%	0%
							grade 2 events	3317	3230	3353	3016	3392	14703
								2%	2%	2%	2%	2%	10%
							grade 3 events	1701	1905	1630	1629	1737	6959
								1%	1%	1%	1%	1%	4%
							grade 4 events	1540	1870	1661	1599	1684	6831
								1%	1%	1%	1%	1%	4%
							grade 5 events	4194	4677	4031	4965	5130	15213
								3%	3%	2%	3%	3%	10%
							grade 6 events	2654	3031	2407	2679	3086	33659
								1%	2%	1%	1%	2%	23%
							grade 7 events	115102	117895	135574	126853	132737	55143
								85%	84%	87%	85%	86%	39%

2.2 Compared Parameters

Parameter	Planned	Actual	Parameter	Planned	Actual
Instrument	ACIS	ACIS	Obspar format version number	7	7
Detector	ACIS-012367	ACIS-012367	Obspar file type	PREDICTED	ACTUAL
Grating	NONE	NONE	Obspar update status	NONE	UPDATED
Data mode	VFAINT	VFAINT	Number of optional ACIS chips dropped	0	0
Observation mode	POINTING	POINTING	On-chip summing requested	N	N
[deg] Pointing RA	283.741765	283.7626024706518	Subarray requested	NONE	NONE
[deg] Pointing Dec	-30.462483	-30.483163171212	Alternating exposures requested	N	N
[deg] Pointing Roll	280.571684	280.7909306989567	[s] Primary exposure time	0.000000	3.2
[mm] SIM focus pos	-0.782348	-0.7809083437167272			
[mm] SIM defocus	0	0.001439871863259334			
[mm] SIM translation stage pos	-233.592463	-233.5874344608287			
[mm] SIM translation stage offset	0	-0.005018542100998502			
[s] Observation start time (MET)	178765443.184000	178764334.24311			
Observation start date	2003-09-01T01:02:59	2003-09-01T00:45:34			
[s] Observation end time (MET)	178795443.184000	178796571.00699			
Observation end date	2003-09-01T09:22:59	2003-09-01T09:42:51			
Read mode	TIMED	TIMED			

2.3 Aspect



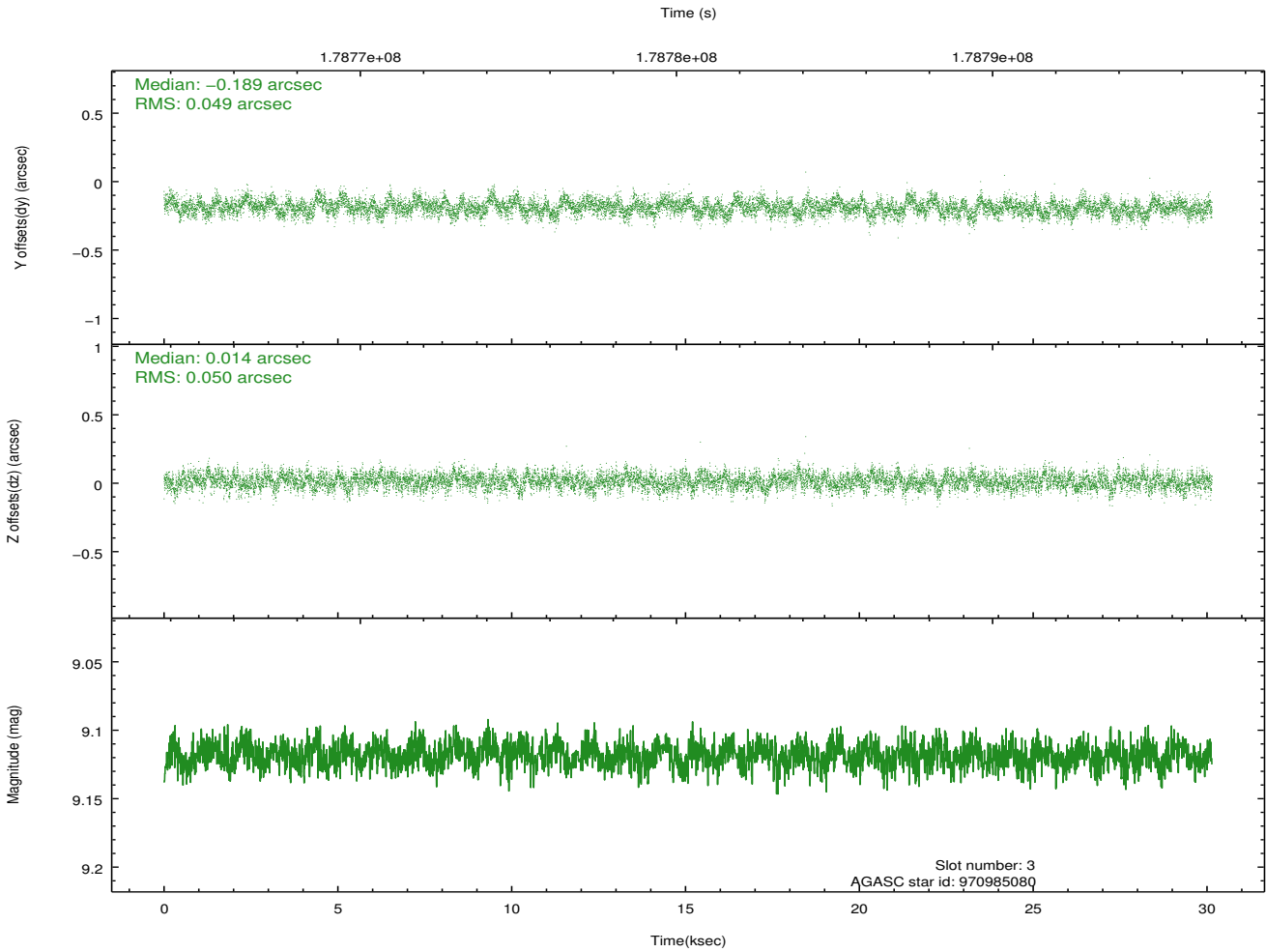
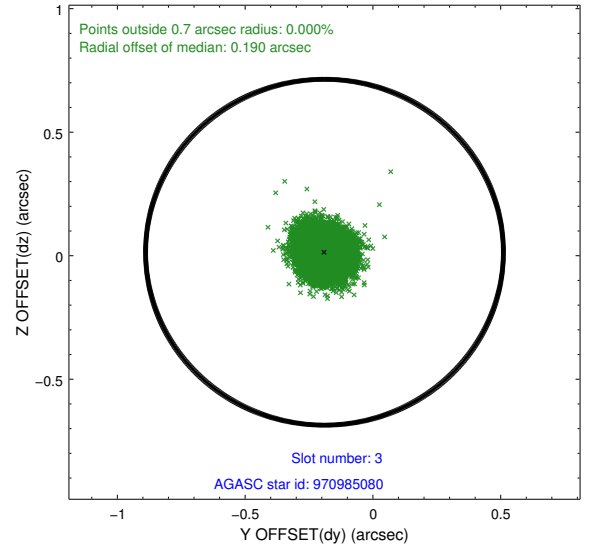
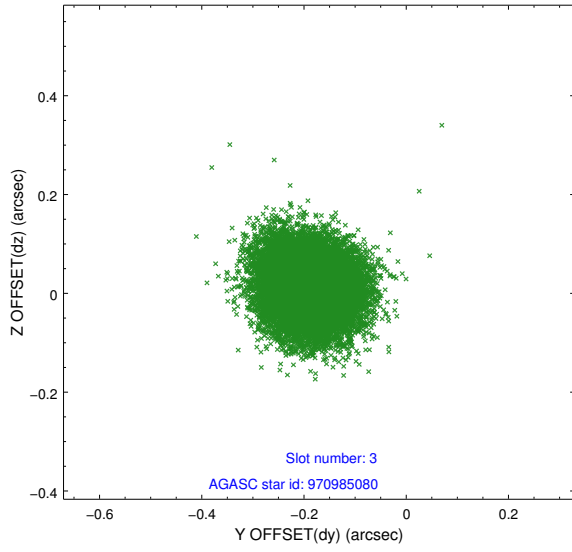


Slot Statistics

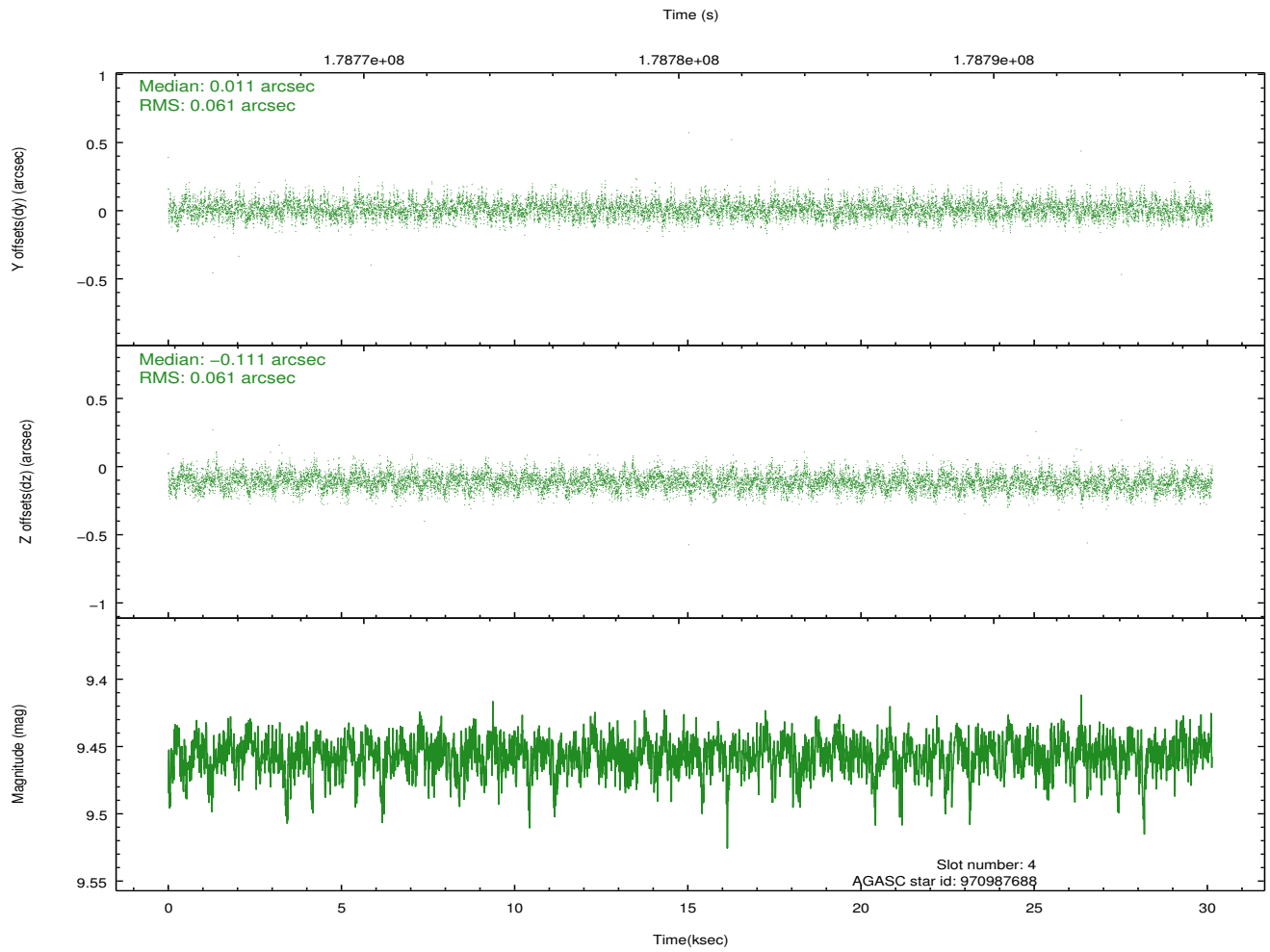
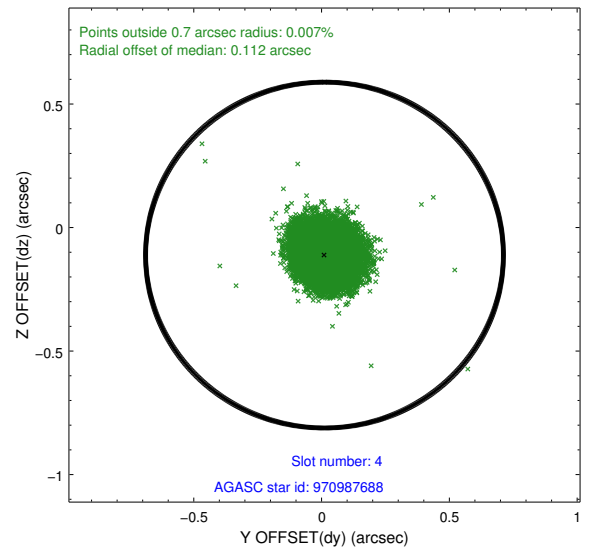
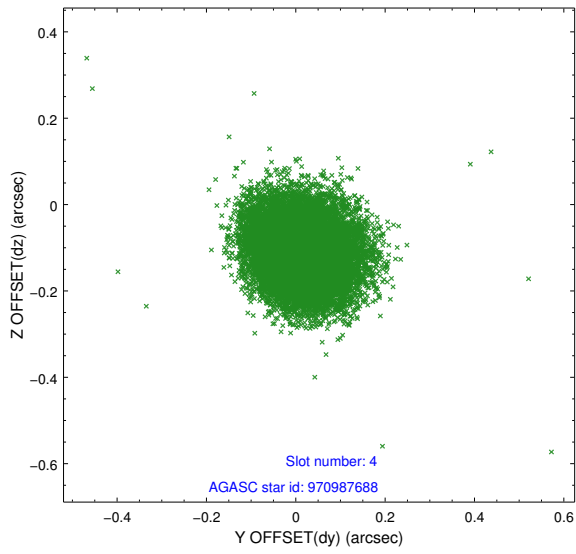
slot	status	id	mag	n_pts	med_dy	med_dz	dr1	dr2	ra	dec	mean_y	mean_z
0	FID	ACIS-I-1	7.24	7353	0.020	0.030	0.010	0.026	0.000000	0.000000	934.83	-832.46
1	FID	ACIS-I-5	7.23	7353	-0.159	0.046	0.008	0.014	0.000000	0.000000	-1813.42	1065.00
2	FID	ACIS-I-6	7.25	7353	0.048	-0.006	0.011	0.032	0.000000	0.000000	400.32	1709.54
3	GUIDE	970985080	9.12	14695	-0.189	0.014	0.075	0.120	283.424526	-30.089228	-1500.59	-725.26
4	GUIDE	970987688	9.46	14692	0.011	-0.111	0.092	0.148	283.171112	-30.972373	1486.25	-2069.13
5	GUIDE	970991792	8.76	14700	0.097	-0.175	0.095	0.149	283.106795	-30.986791	1502.27	-2273.87
6	GUIDE	971129464	7.47	14703	0.053	0.114	0.051	0.085	284.527228	-30.825039	1737.28	2146.23
7	GUIDE	971125384	8.99	14696	0.027	0.167	0.071	0.117	284.383270	-30.895533	1902.09	1661.68

2.4 Star Slots

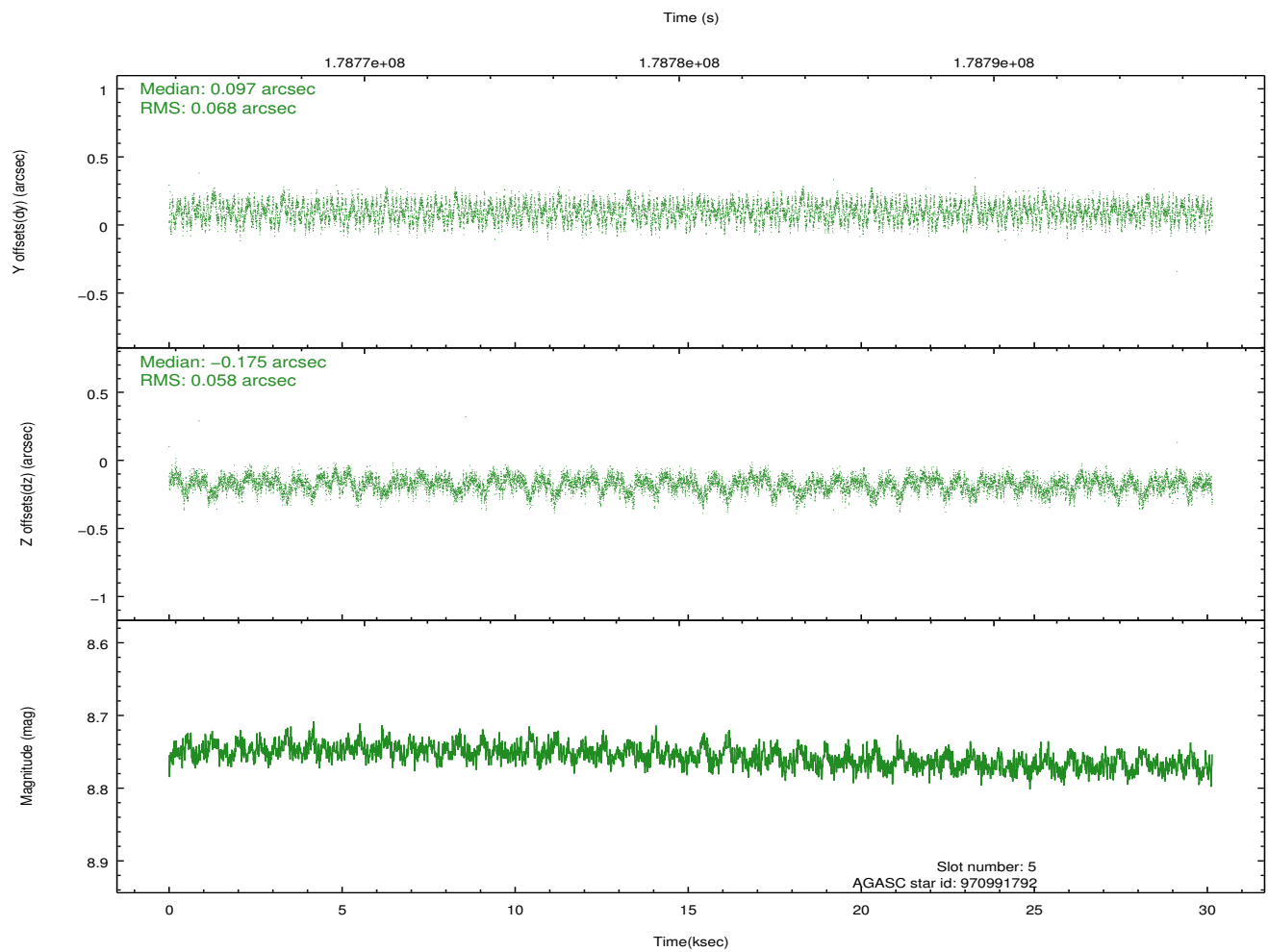
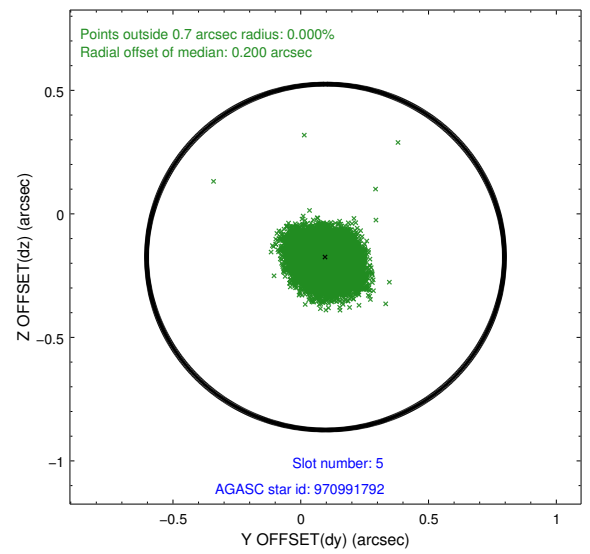
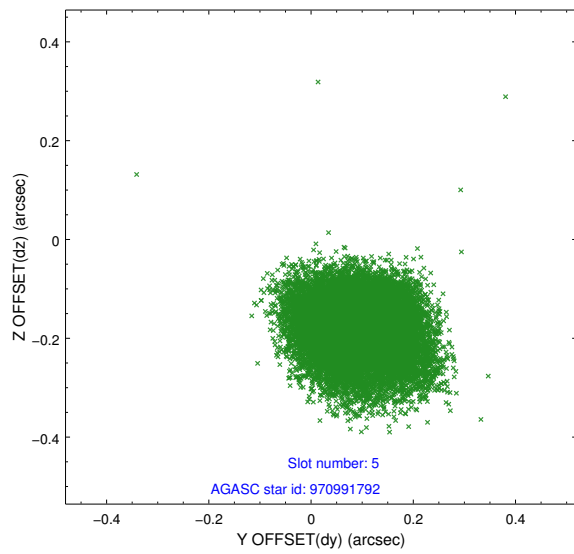
2.4.1 Slot 3



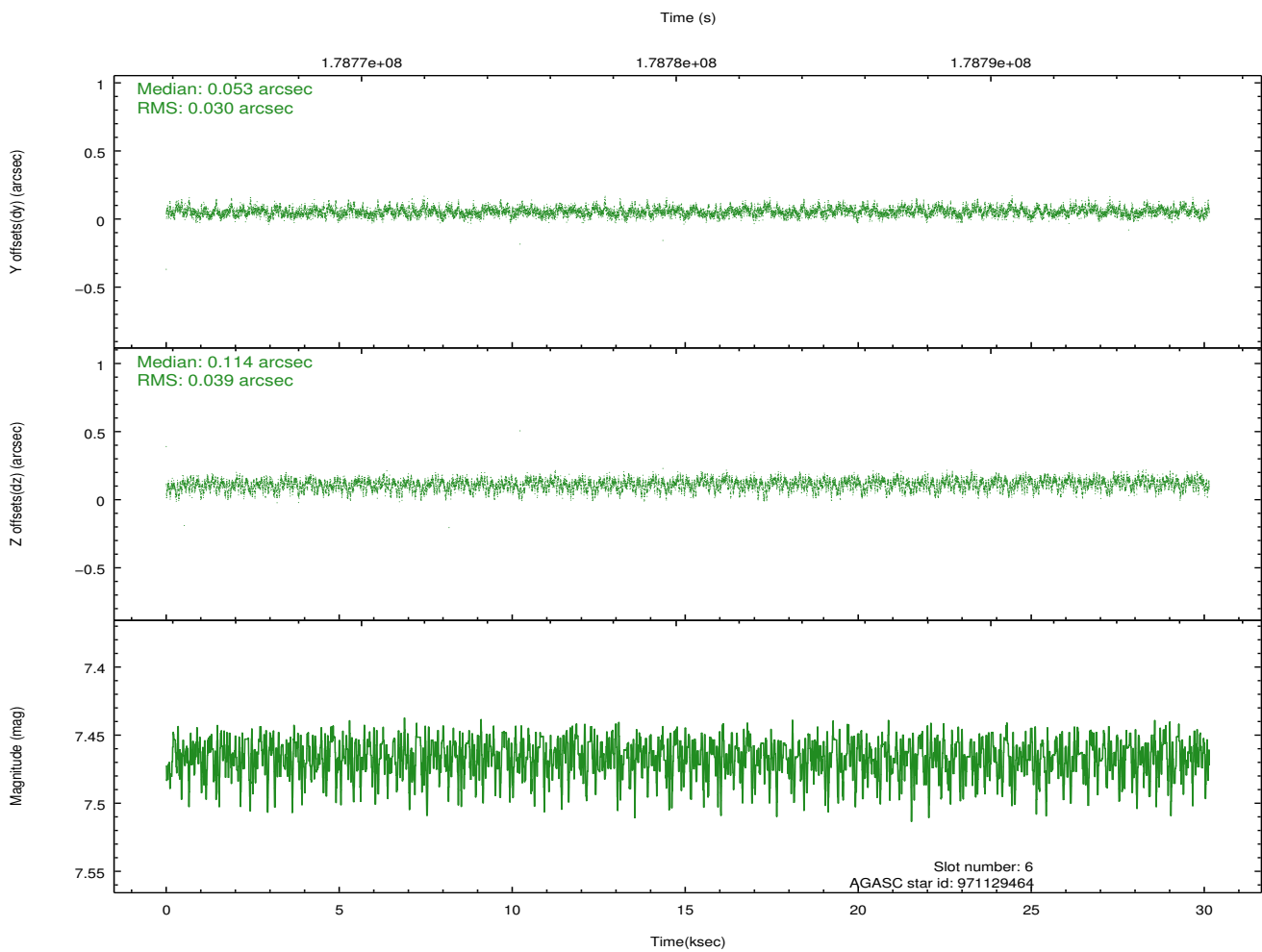
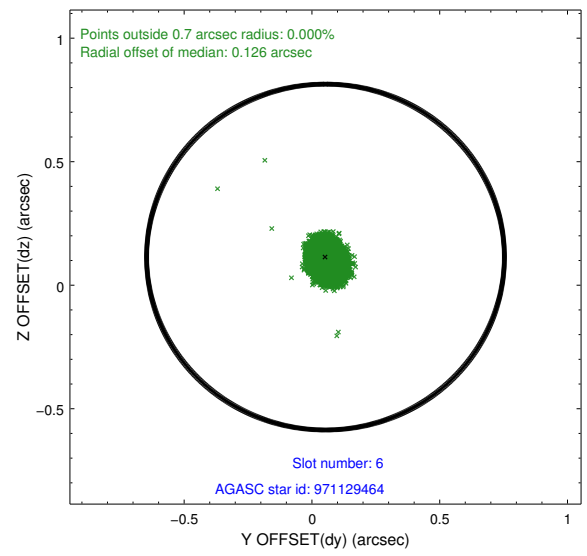
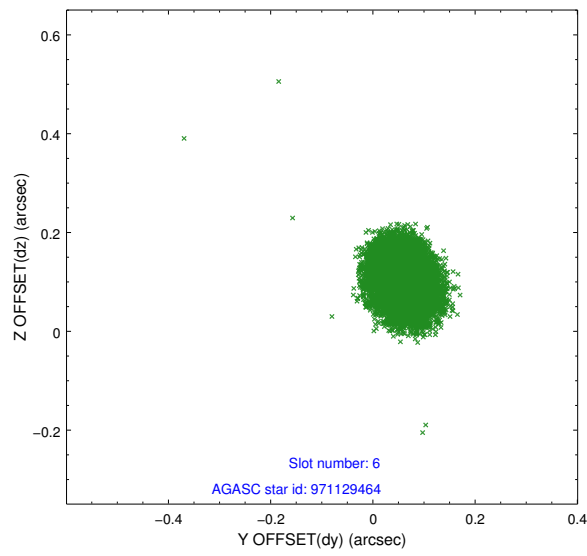
2.4.2 Slot 4



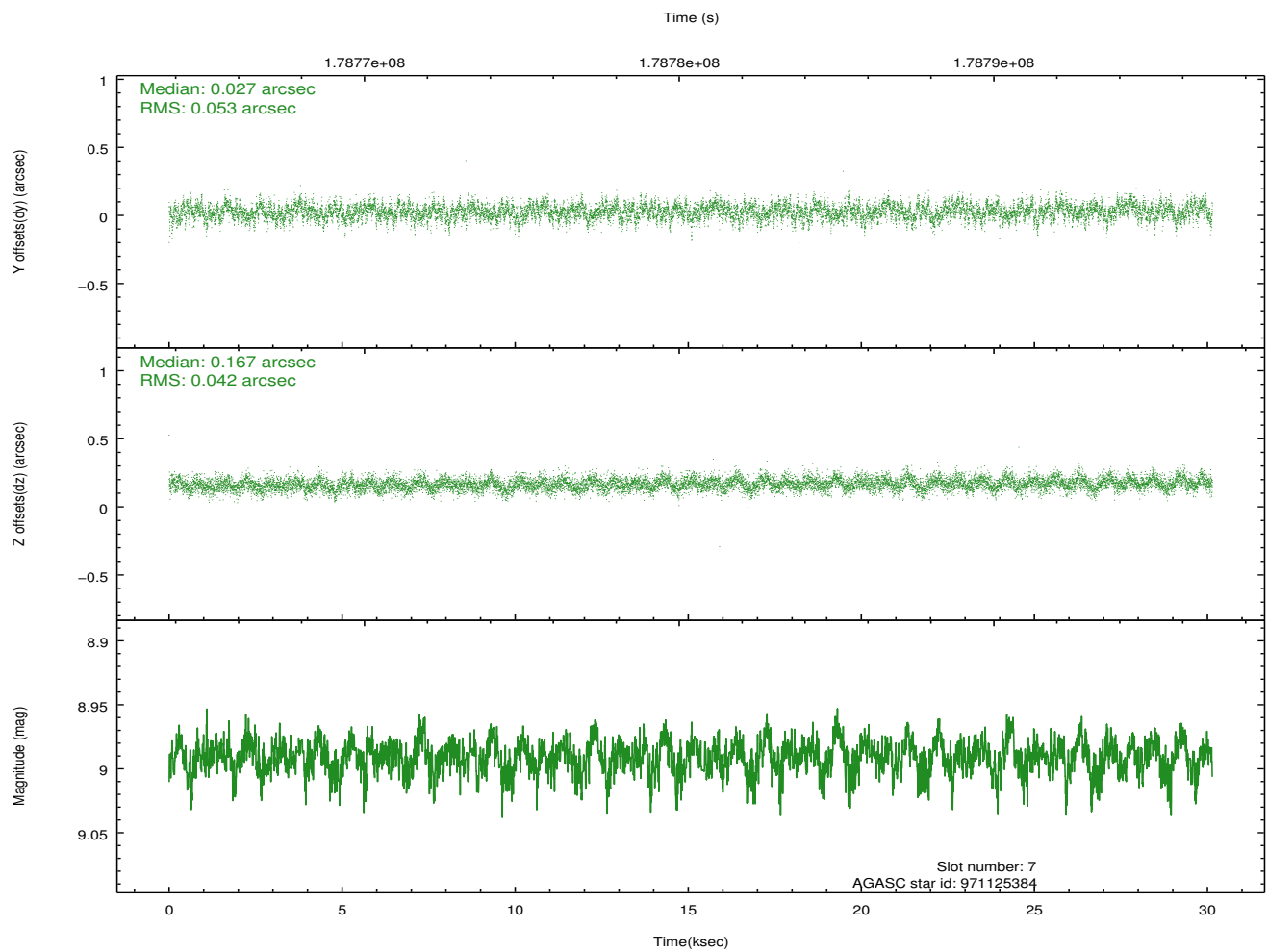
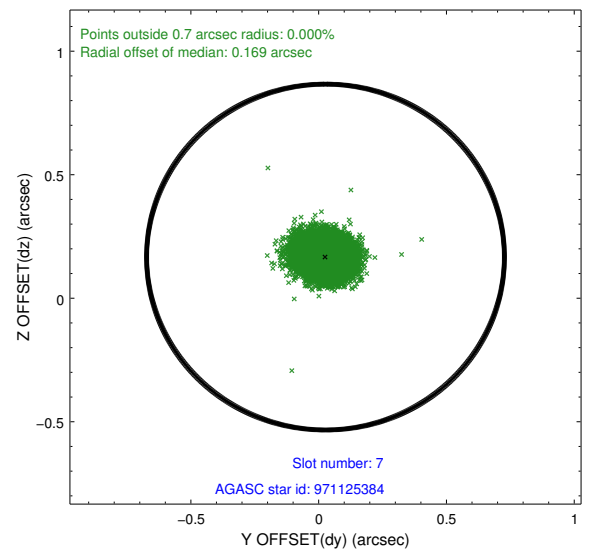
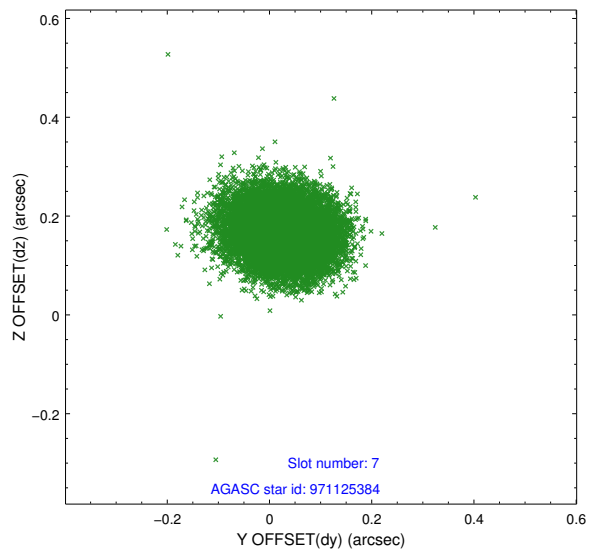
2.4.3 Slot 5



2.4.4 Slot 6

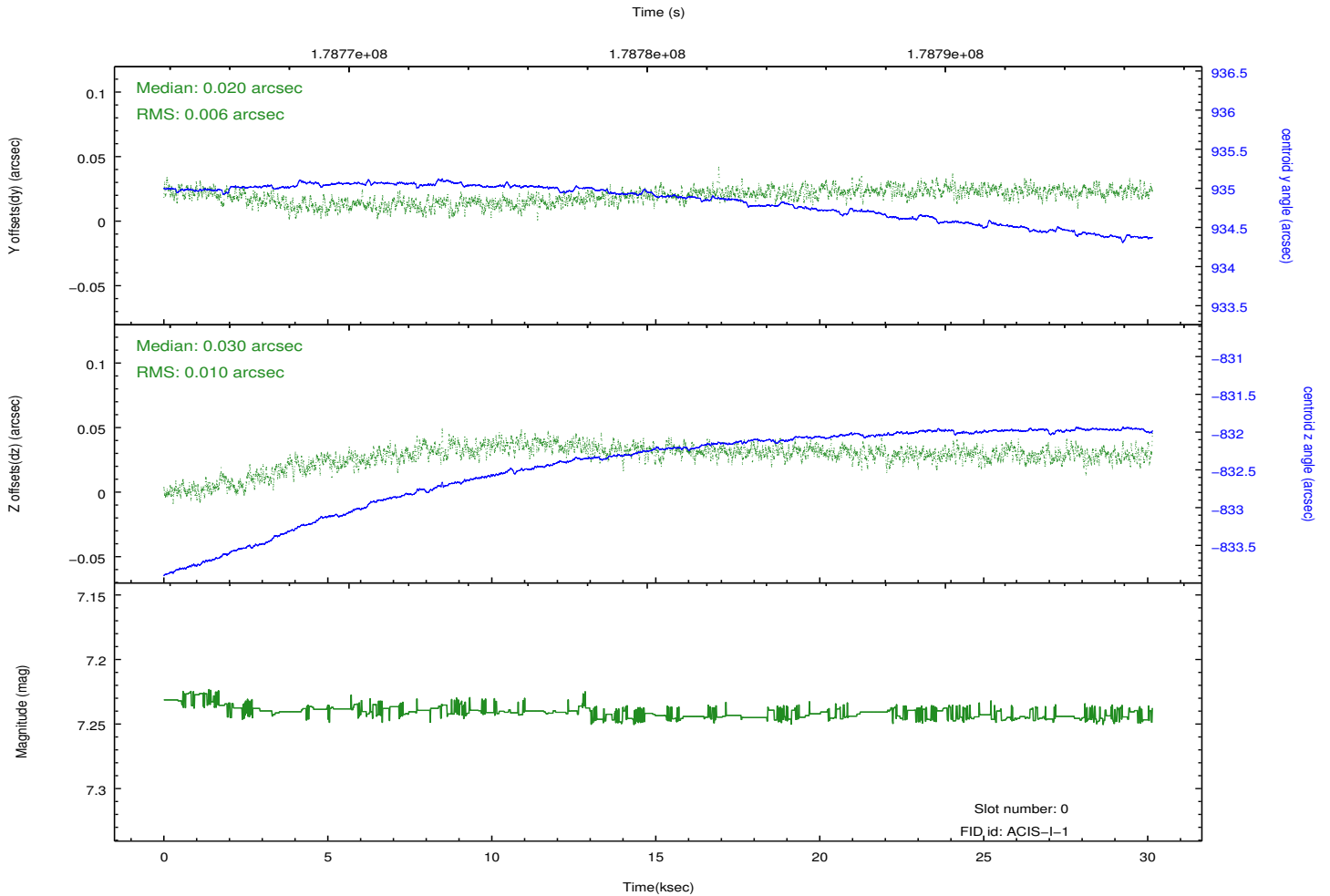
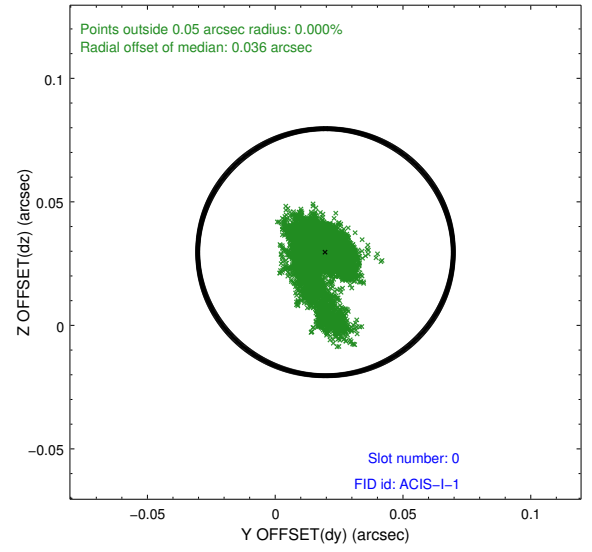


2.4.5 Slot 7

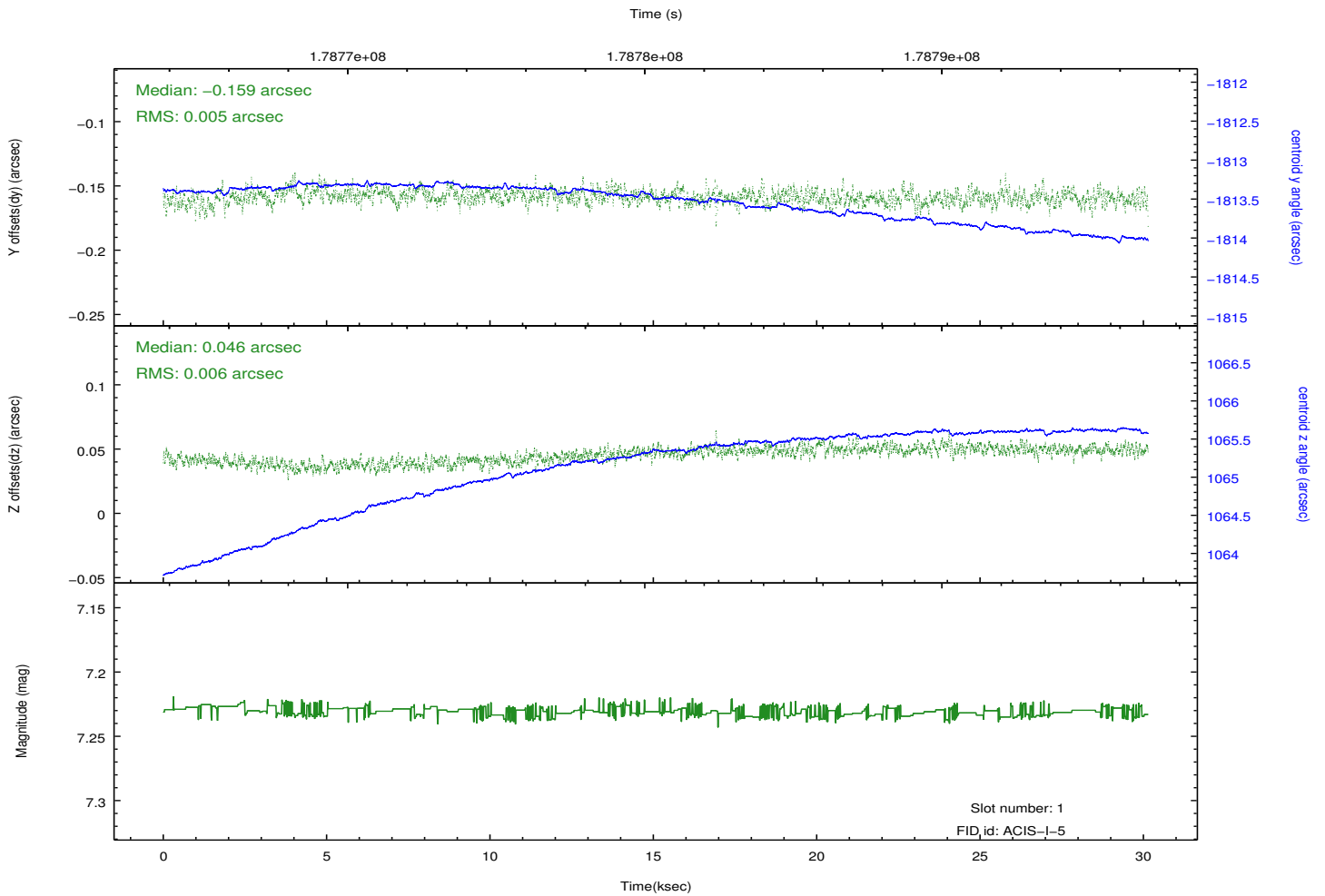
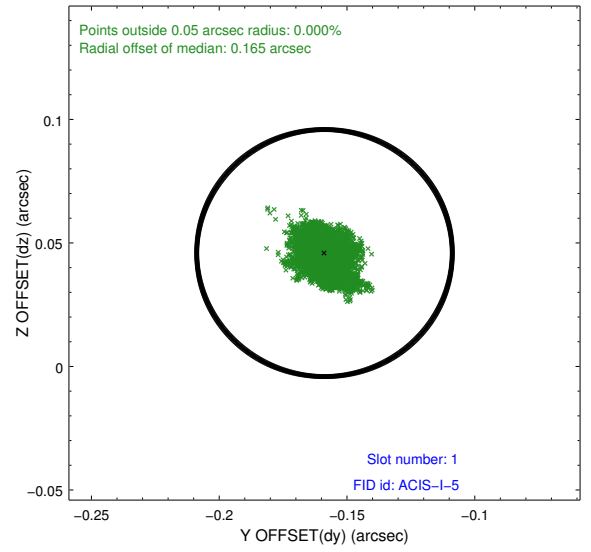
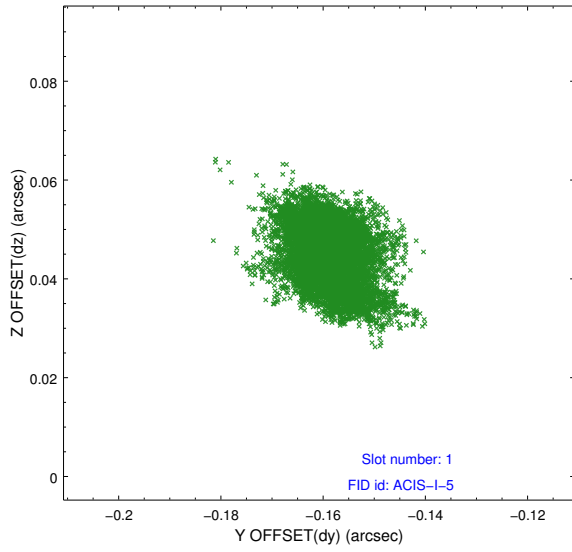


2.5 FID Slots

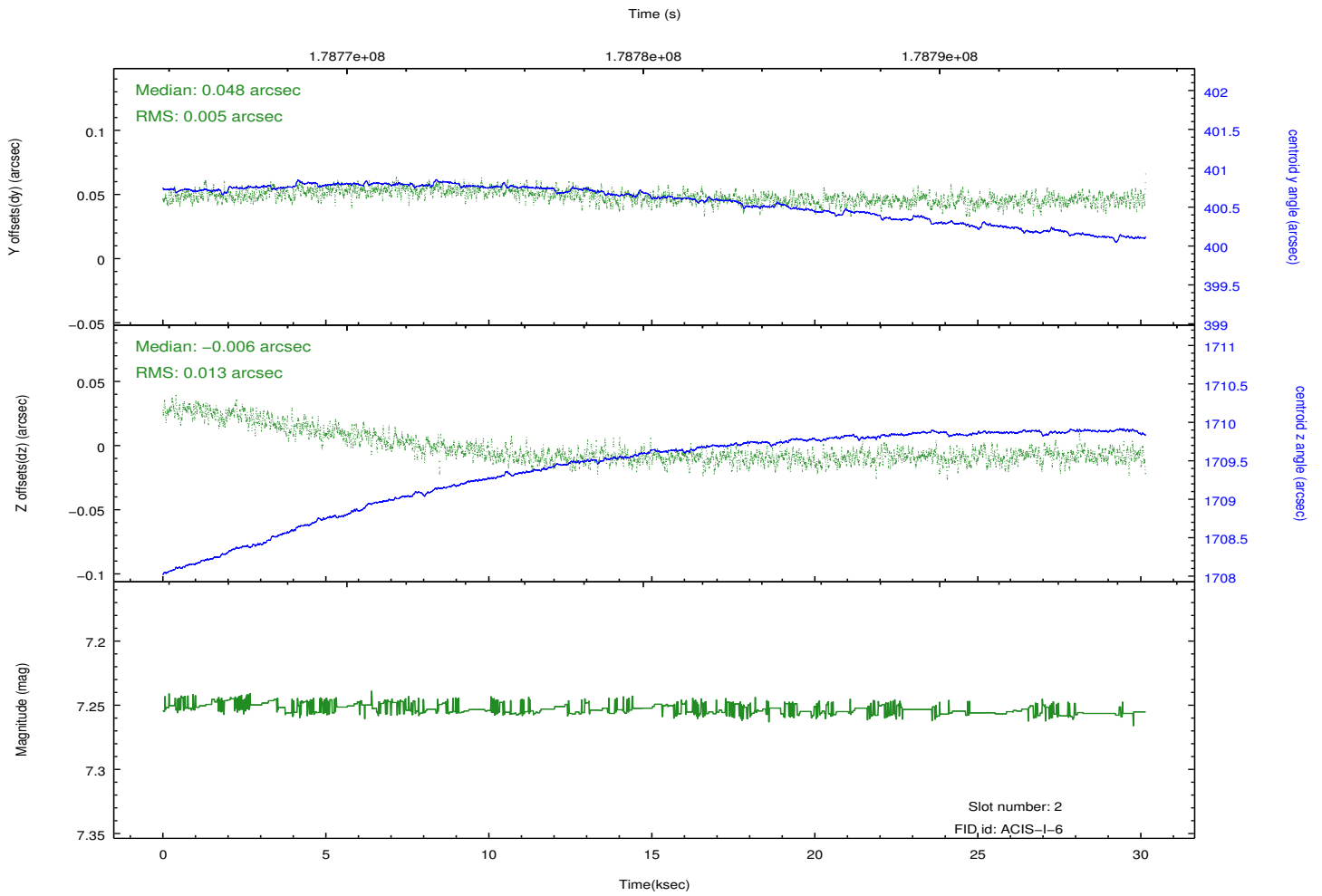
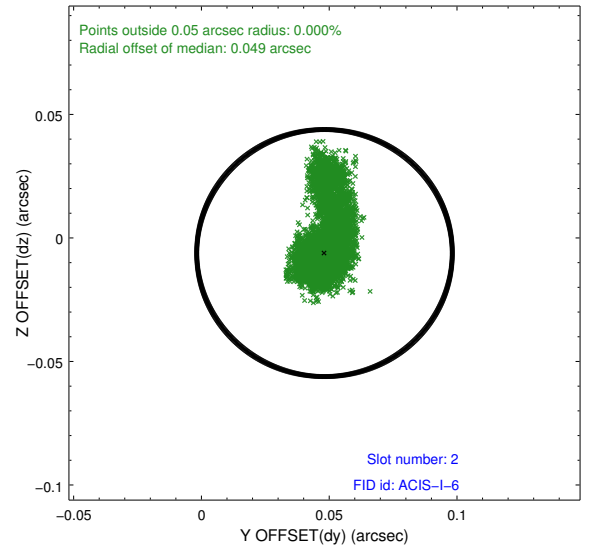
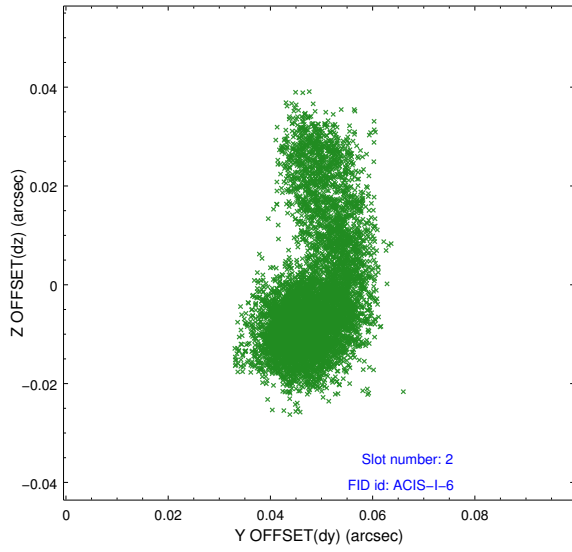
2.5.1 Slot 0



2.5.2 Slot 1



2.5.3 Slot 2



A Summary

A.1 Status

V&V Scientist	Jen Lauer
V&V Date (YYYY-MM-DD)	2012.11.28
V&V Edition	1
V&V Disposition and Status	OK
V&V Charge Time	30.137

A.2 Comments