

# V&V Reference Report

## L2 ASCDS Version : 8.4.5

Observation 4518 - L2 Version 4  
Chandra X-Ray Center

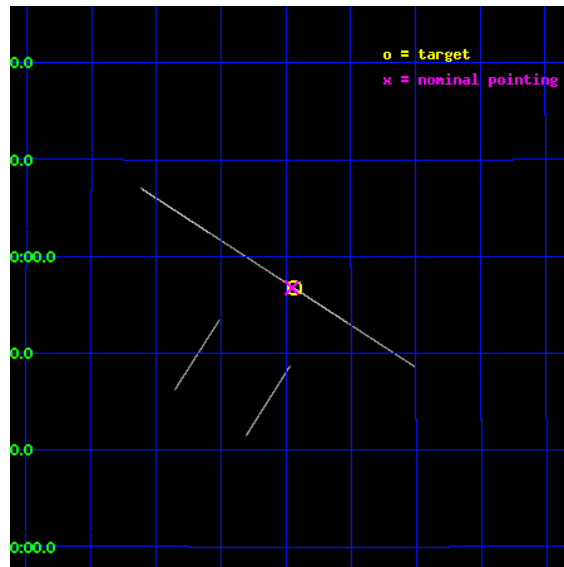
L2 Processing Date : Nov 11 2012

## Contents

<b>1</b>	<b>Front</b>	<b>2</b>
<b>2</b>	<b>OBI</b>	<b>3</b>
2.1	OBI . . . . .	3
2.1.1	Images . . . . .	3
2.1.2	Parameters . . . . .	4
2.1.3	Events . . . . .	4
2.2	Compared Parameters . . . . .	5
2.3	Aspect . . . . .	6
2.4	Star Slots . . . . .	9
2.4.1	Slot 3 . . . . .	9
2.4.2	Slot 4 . . . . .	10
2.4.3	Slot 5 . . . . .	11
2.4.4	Slot 6 . . . . .	12
2.4.5	Slot 7 . . . . .	13
2.5	FID Slots . . . . .	14
2.5.1	Slot 0 . . . . .	14
2.5.2	Slot 1 . . . . .	15
2.5.3	Slot 2 . . . . .	16
<b>A</b>	<b>Summary</b>	<b>17</b>
A.1	Status . . . . .	17
A.2	Comments . . . . .	17

# 1 Front

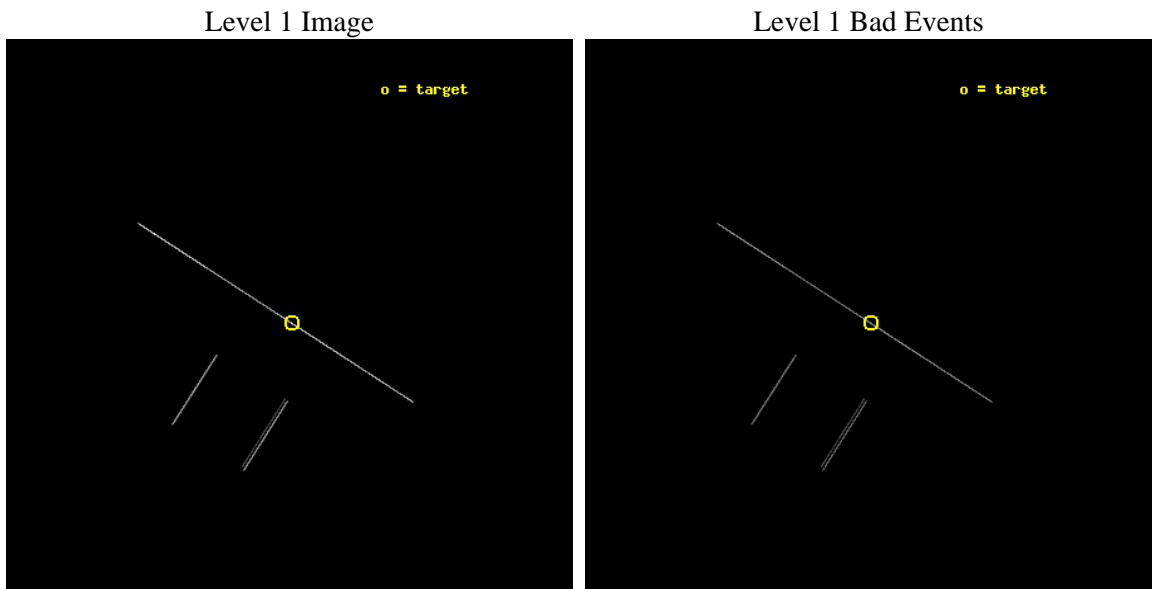
seq_num	300112	Sequence number
obs_id	4518	Observation id
title	Continued Monitoring of the Orbital Evolution of RX J1914.4+2456	P
observer	Dr. Tod Strohmayer	Principal investigator
object	RX J1914.4+2456	Source name
ra_targ	288.60875	Observer's specified target RA [deg]
dec_targ	24.945444	Observer's specified target Dec [deg]
ra_nom	288.61349603808	Nominal RA [deg]
dec_nom	24.946212396231	Nominal Dec [deg]
roll_nom	32.702837871517	Nominal Roll [deg]
revision	4	Processing version of data
ontime	15177.5	Sum of GTIs [s]
livetime	15118.212890625	Livetime [s]
ontime2	15176.040857077	Sum of GTIs [s]
ontime3	15177.5	Sum of GTIs [s]
ontime5	15177.5	Sum of GTIs [s]
ontime6	15177.5	Sum of GTIs [s]
ontime7	15177.5	Sum of GTIs [s]
ontime8	15177.5	Sum of GTIs [s]
l2events	168825	Number of level 2 events



## 2 OBI

### 2.1 OBI

#### 2.1.1 Images



### 2.1.2 Parameters

obi_num	0	Obi number	sched_exp_time	15000.000000	[s] Scheduled observation exposure time
ascdsver	8.4.5	Processing system revision	ontime	15177.5	Sum of GTIs [s]
caldbver	4.5.2	&#160	ontime2	15176.040857077	Sum of GTIs [s]
date	2012-11-11T14:54:36	Date and time of file creation	ontime3	15177.5	Sum of GTIs [s]
revision	4	Processing version of data	ontime5	15177.5	Sum of GTIs [s]
			ontime6	15177.5	Sum of GTIs [s]
			ontime7	15177.5	Sum of GTIs [s]
			ontime8	15177.5	Sum of GTIs [s]
			l1events	270786	Number of level 1 events

### 2.1.3 Events

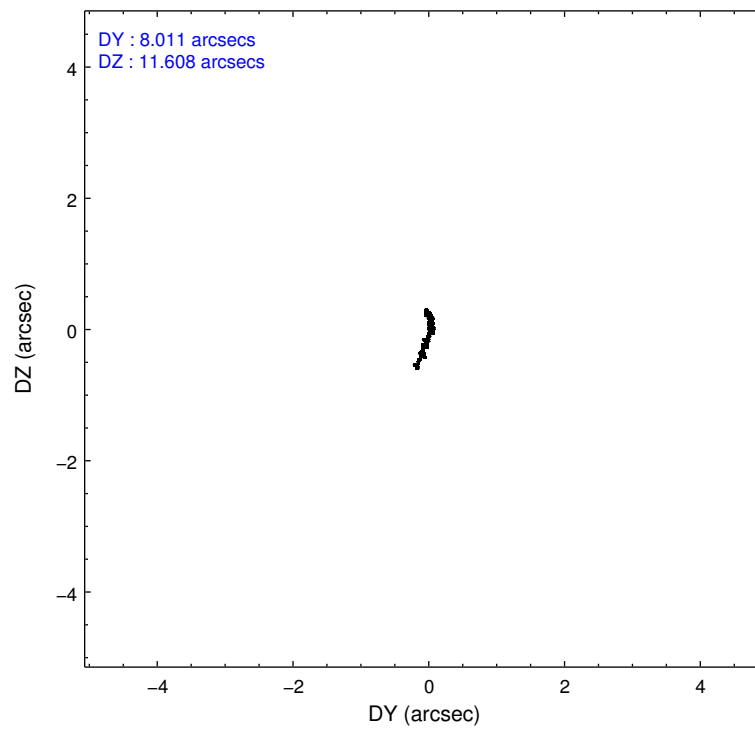
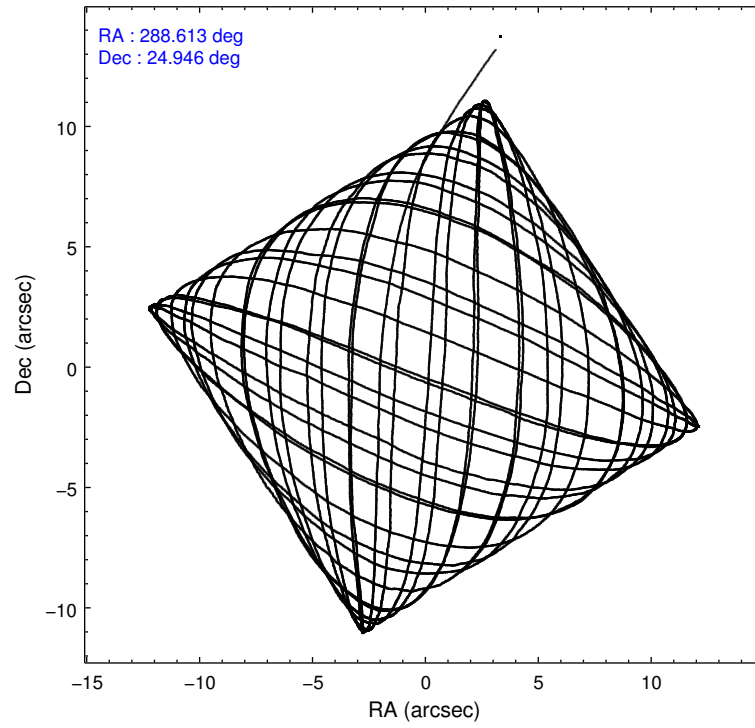
	ccd 2	ccd 3	ccd 5	ccd 6	ccd 7	ccd 8
level 1 events	19449	20894	101943	20813	67305	40382
rejected events	4475	4910	13485	5105	12157	7440
rejected %	23%	23%	13%	24%	18%	18%

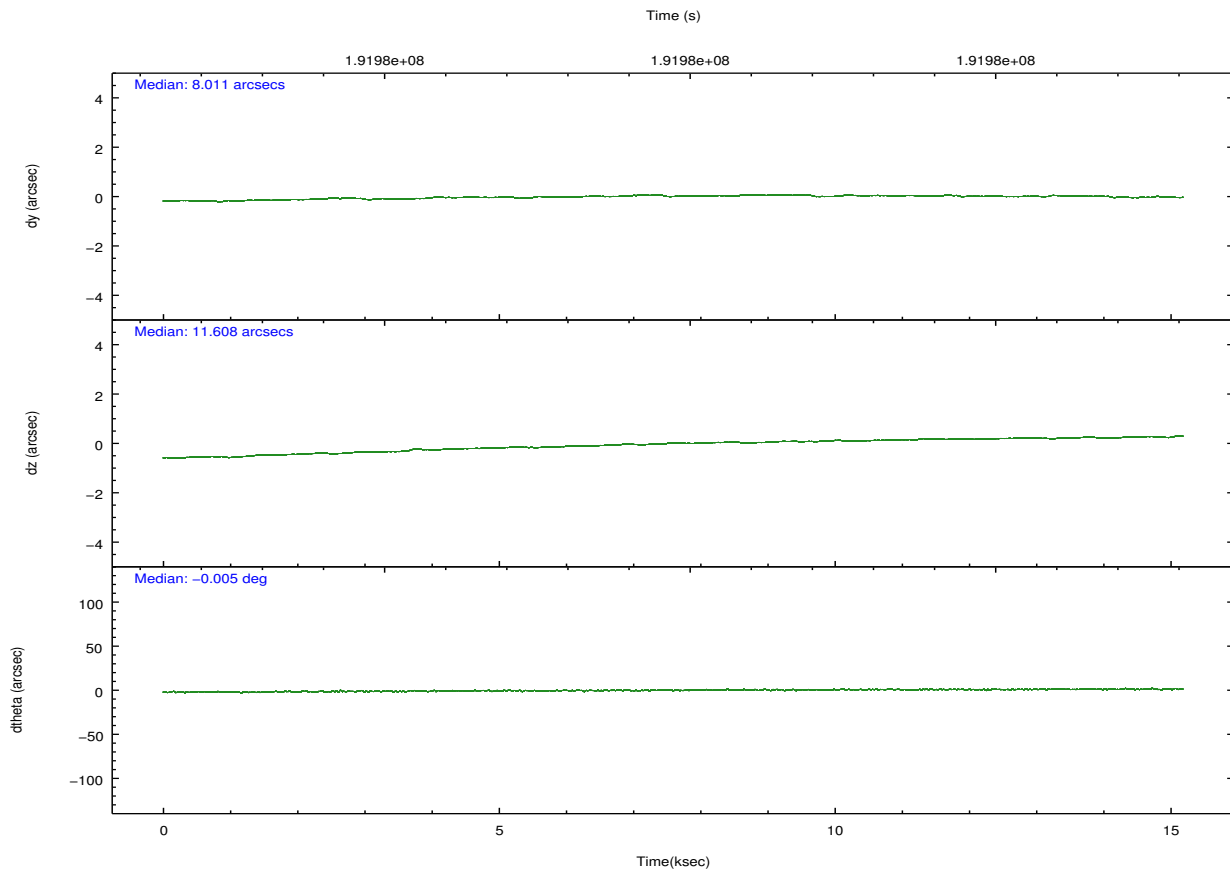
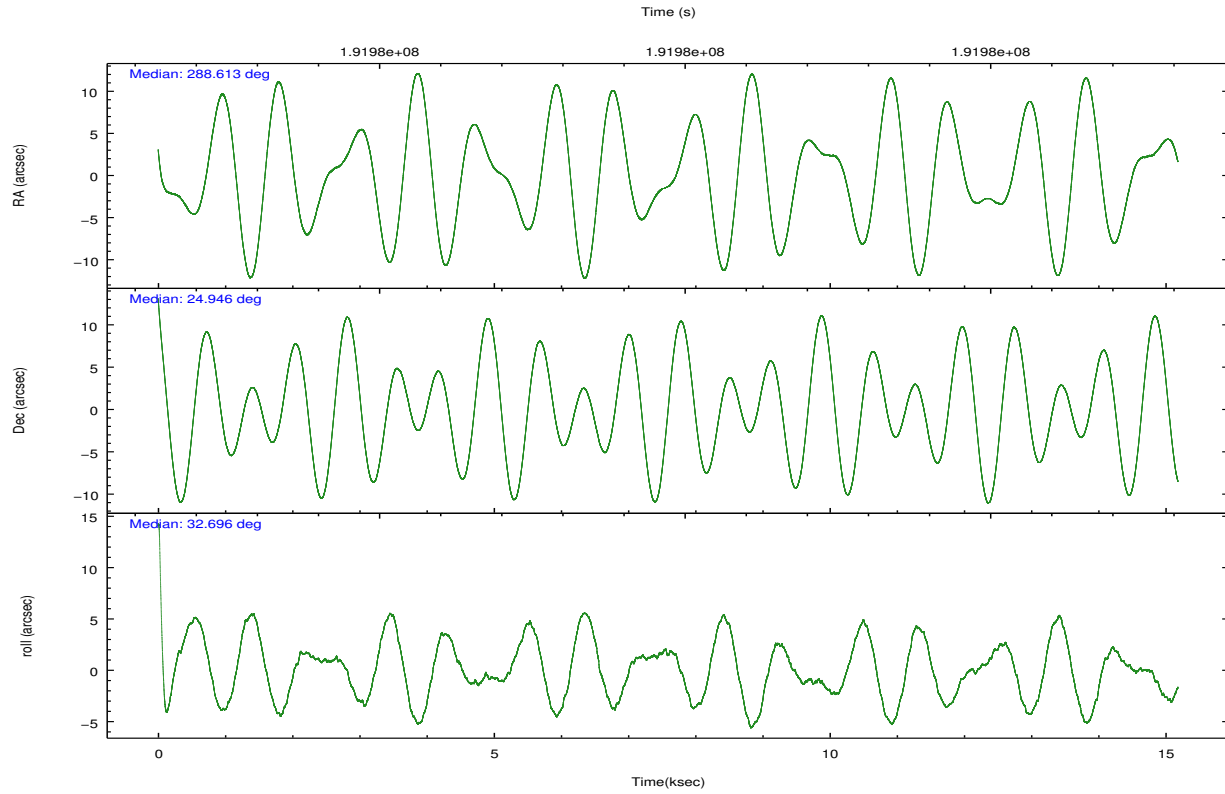
	ccd 2	ccd 3	ccd 5	ccd 6	ccd 7	ccd 8
grade 0 events	1999	1949	25441	1662	4772	5935
	10%	9%	24%	7%	7%	14%
grade 1 events	48	72	91	62	128	123
	0%	0%	0%	0%	0%	0%
grade 2 events	6350	6670	24072	6543	15052	11011
	32%	31%	23%	31%	22%	27%
grade 3 events	1925	2394	1441	2038	2628	3900
	9%	11%	1%	9%	3%	9%
grade 4 events	2025	1992	1351	2000	2602	3835
	10%	9%	1%	9%	3%	9%
grade 5 events	3457	3815	7752	4118	9019	5472
	17%	18%	7%	19%	13%	13%
grade 6 events	3645	4002	41795	4390	33104	10106
	18%	19%	40%	21%	49%	25%
grade 7 events	0	0	0	0	0	0
	0%	0%	0%	0%	0%	0%

## 2.2 Compared Parameters

Parameter	Planned	Actual	Parameter	Planned	Actual
Instrument	ACIS	ACIS	Obspar format version number	7	7
Detector	ACIS-235678	ACIS-235678	Obspar file type	PREDICTED	ACTUAL
Grating	NONE	NONE	Obspar update status	NONE	UPDATED
Data mode	CC33_GRADED	CC33_GRADED	Number of optional ACIS chips dropped	0	0
Observation mode	POINTING	POINTING	On-chip summing requested	N	N
[deg] Pointing RA	288.600072	288.613496038079	Subarray requested	NONE	NONE
[deg] Pointing Dec	24.921835	24.94621239623051	Alternating exposures requested	N	N
[deg] Pointing Roll	32.551854	32.70283787151665	[s] Primary exposure time	0.000000	0
[mm] SIM focus pos	-0.684267	-0.6828225247311905			
[mm] SIM defocus	0	0.001444936568705701			
[mm] SIM translation stage pos	-190.132523	-190.1425803651734			
[mm] SIM translation stage offset	0	0.01005778216563158			
[s] Observation start time (MET)	191972305.184000	191971212.27679			
Observation start date	2004-01-31T21:37:21	2004-01-31T21:20:12			
[s] Observation end time (MET)	191987305.184000	191988330.29004			
Observation end date	2004-02-01T01:47:21	2004-02-01T02:05:30			
Read mode	CONTINUOUS	CONTINUOUS			

## 2.3 Aspect



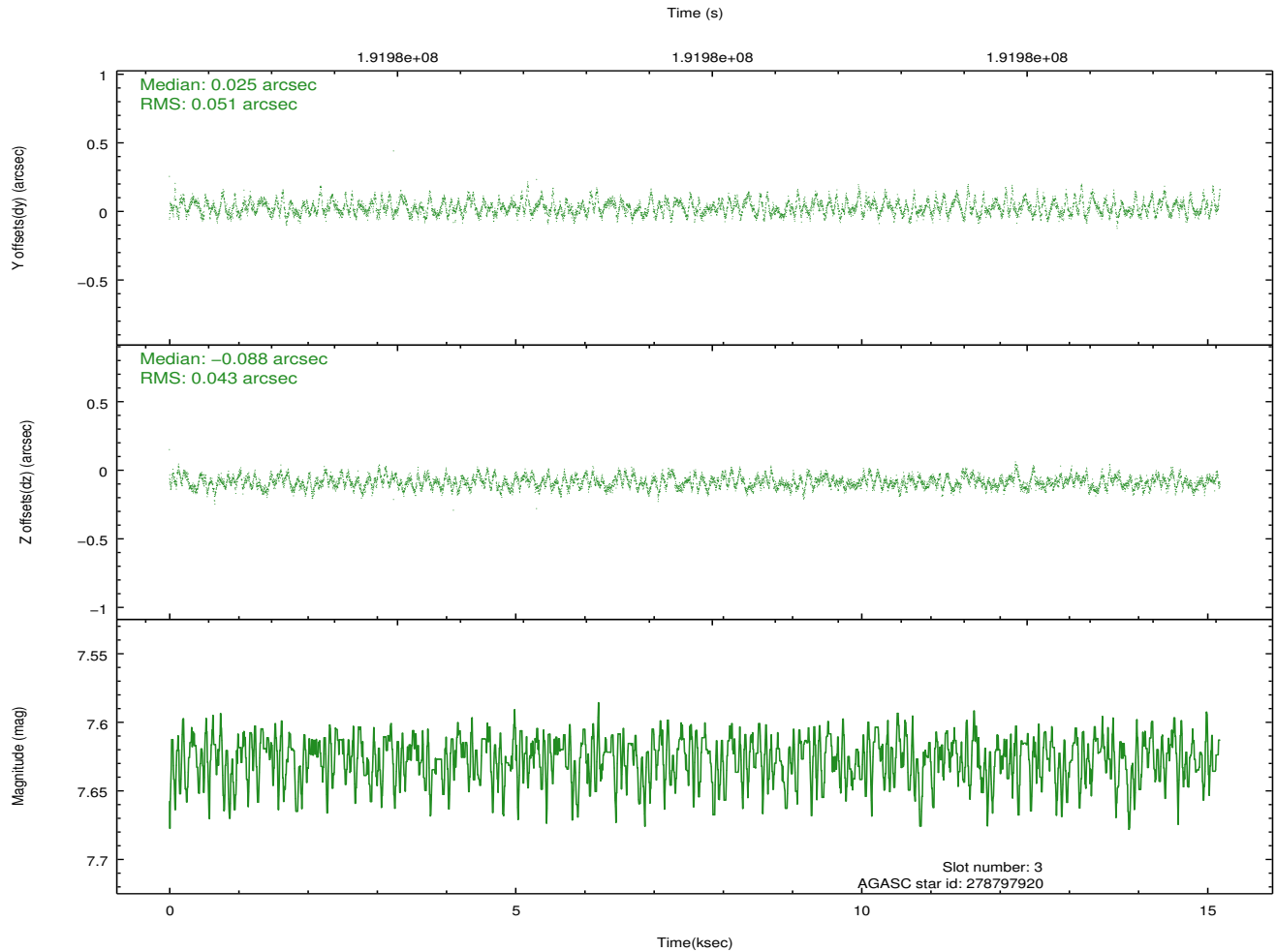
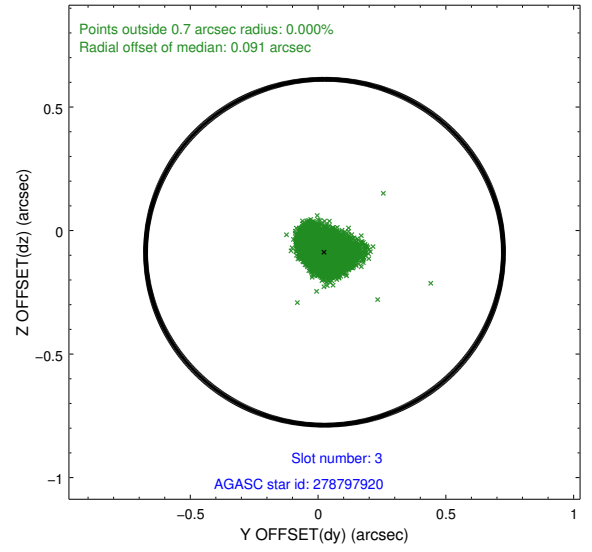
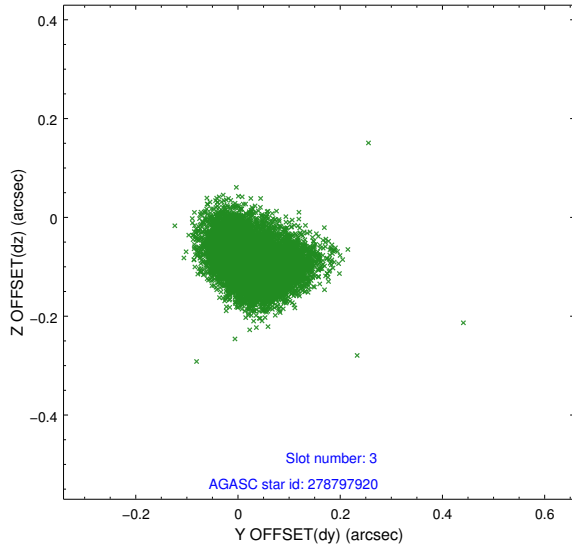


### Slot Statistics

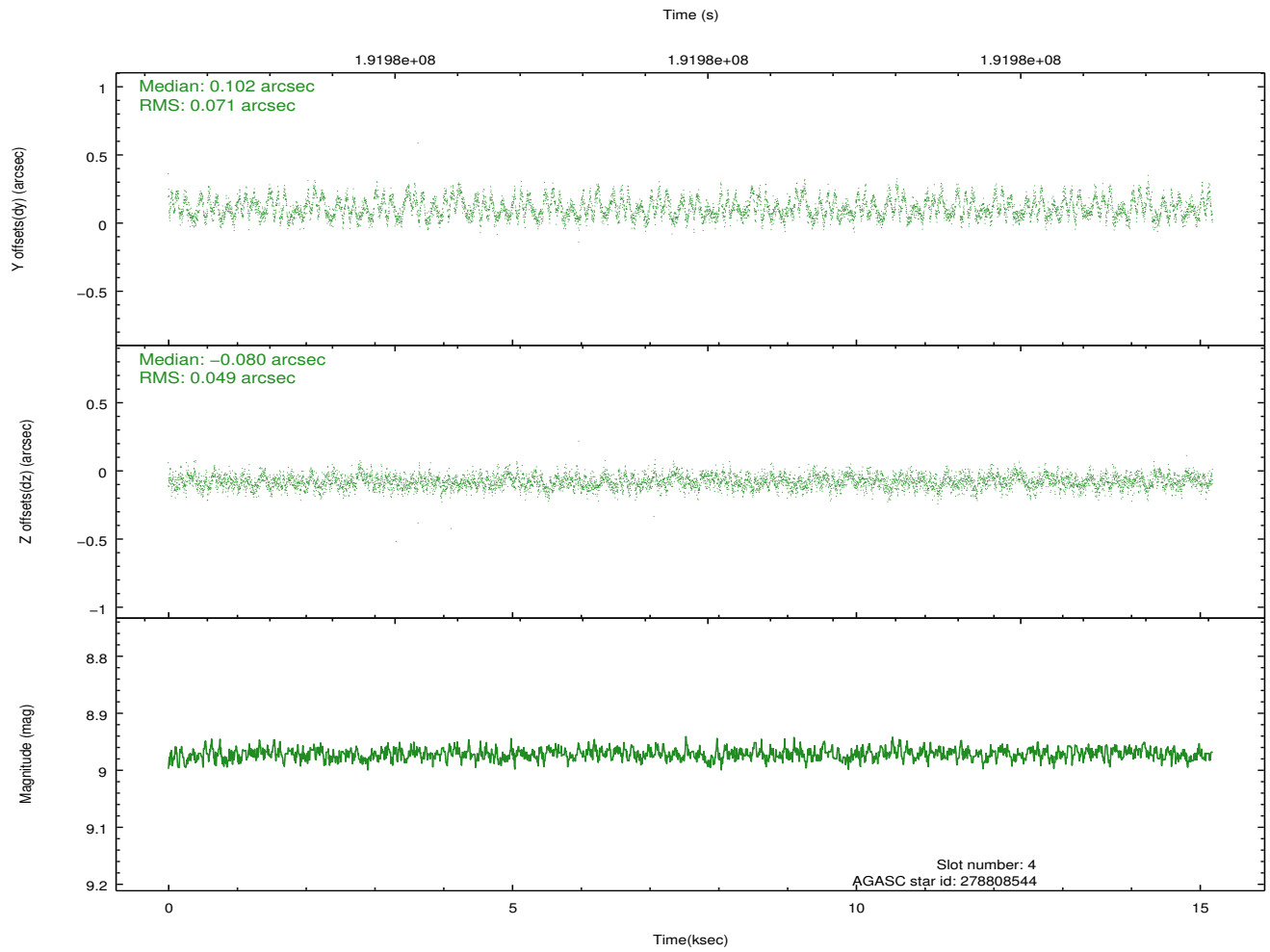
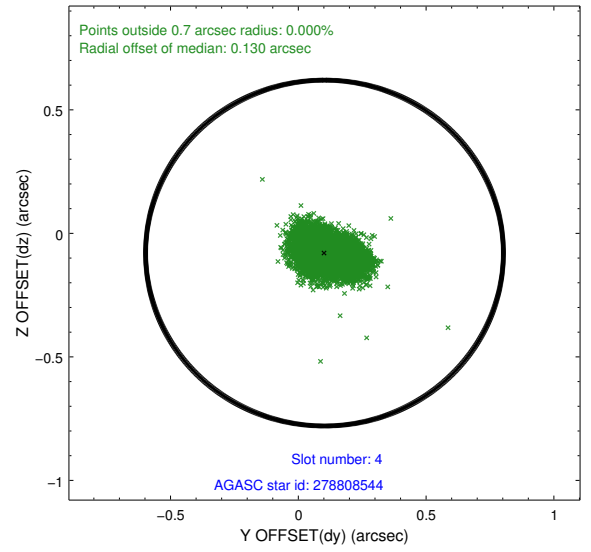
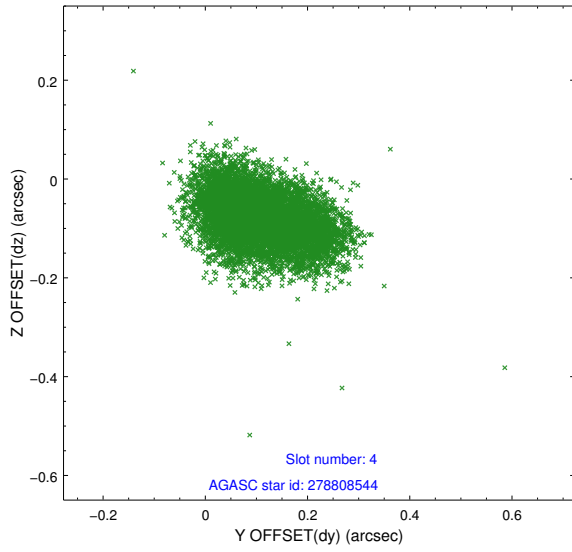
slot	status	id	mag	n_pts	med_dy	med_dz	dr1	dr2	ra	dec	mean_y	mean_z
0	FID	ACIS-S-1	7.18	3703	0.032	-0.082	0.010	0.017	0.000000	0.000000	935.28	-1728.49
1	FID	ACIS-S-4	7.20	3703	0.057	0.046	0.009	0.016	0.000000	0.000000	2152.89	175.48
2	FID	ACIS-S-5	7.23	3704	-0.115	0.049	0.008	0.013	0.000000	0.000000	-1813.34	169.44
3	GUIDE	278797920	7.62	7407	0.025	-0.088	0.072	0.112	288.580174	25.013203	122.39	312.13
4	GUIDE	278808544	8.97	7403	0.102	-0.080	0.091	0.149	287.819957	25.159250	-1678.88	2094.16
5	GUIDE	278953272	8.36	7407	-0.066	0.179	0.061	0.097	289.216166	24.729034	1327.05	-1664.57
6	GUIDE	278954448	7.74	7403	0.011	0.113	0.049	0.080	289.033961	24.779147	920.03	-1194.55
7	GUIDE	278934056	9.31	7400	-0.083	-0.126	0.085	0.140	288.878687	25.754107	2374.12	2040.29

## 2.4 Star Slots

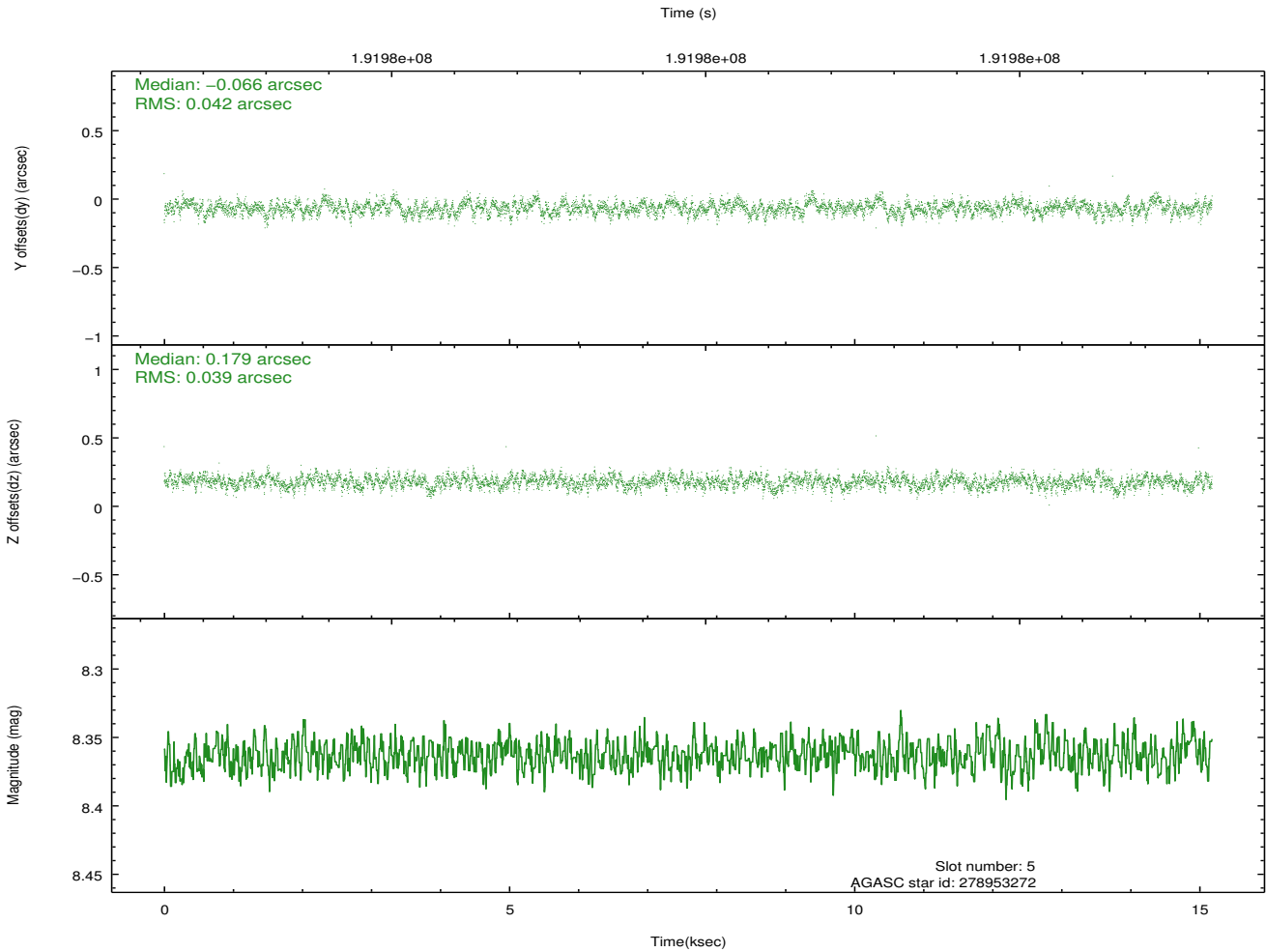
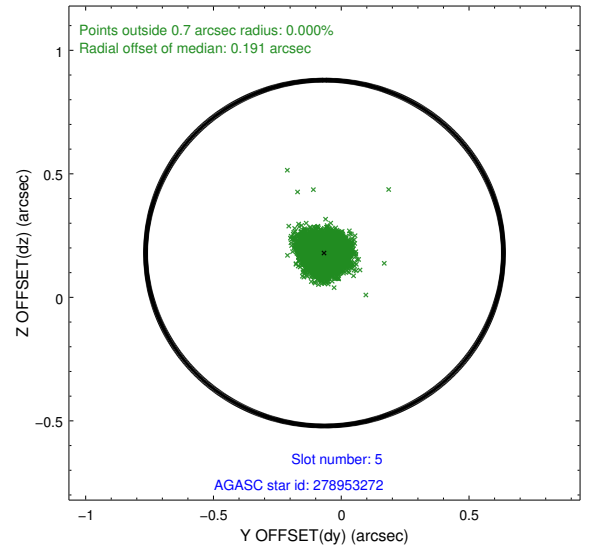
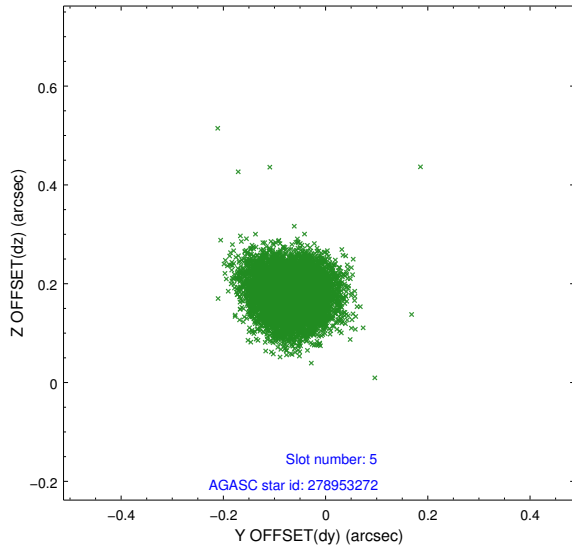
### 2.4.1 Slot 3



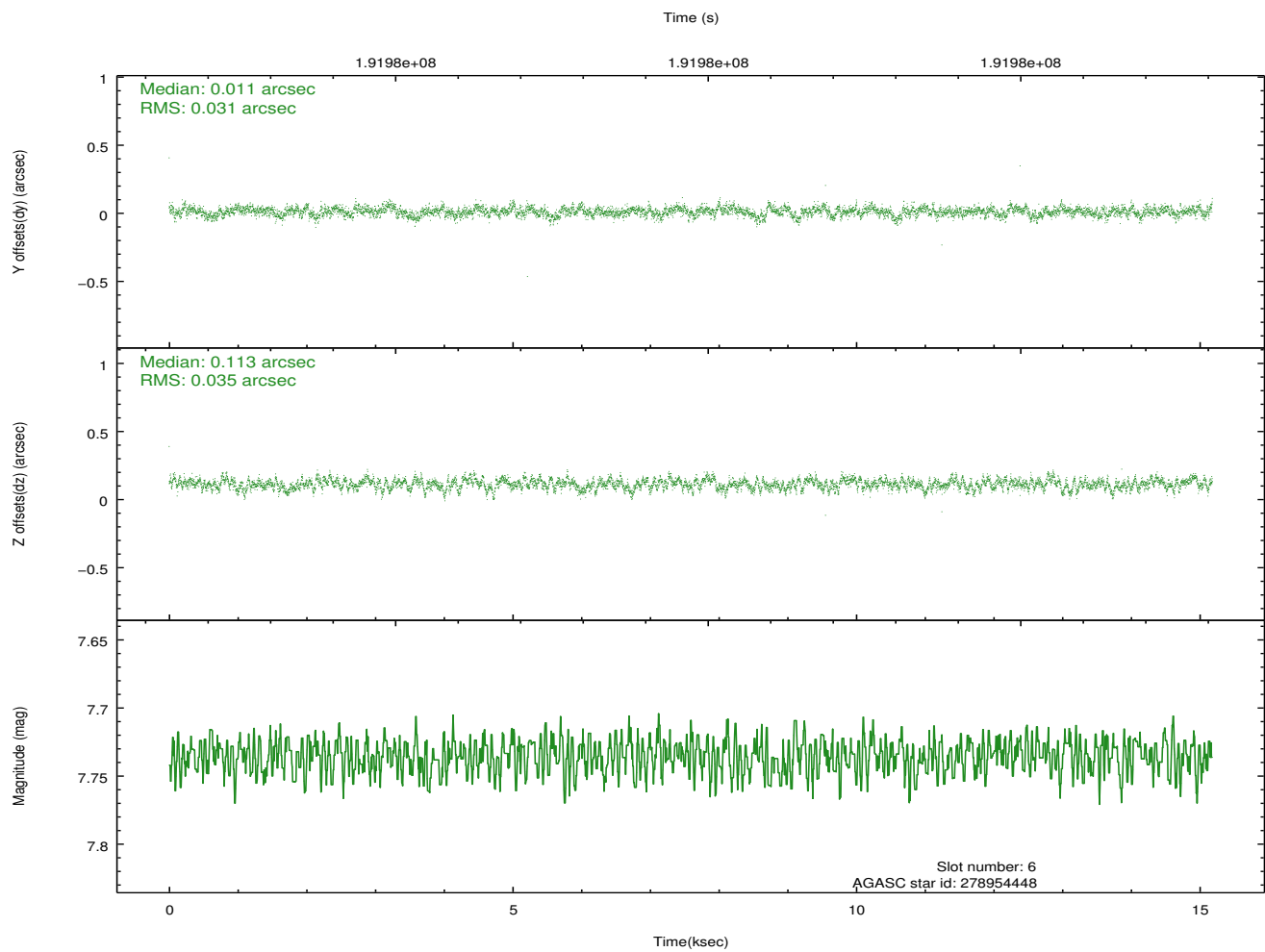
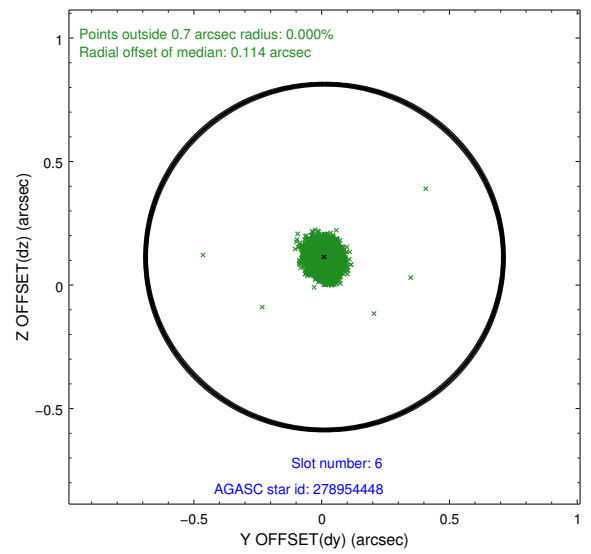
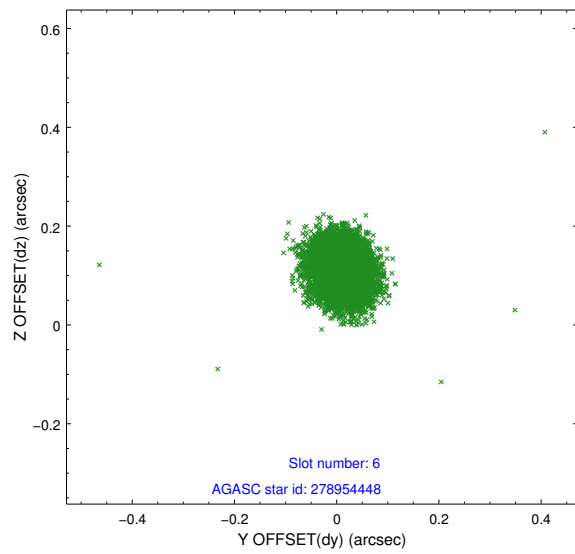
### 2.4.2 Slot 4



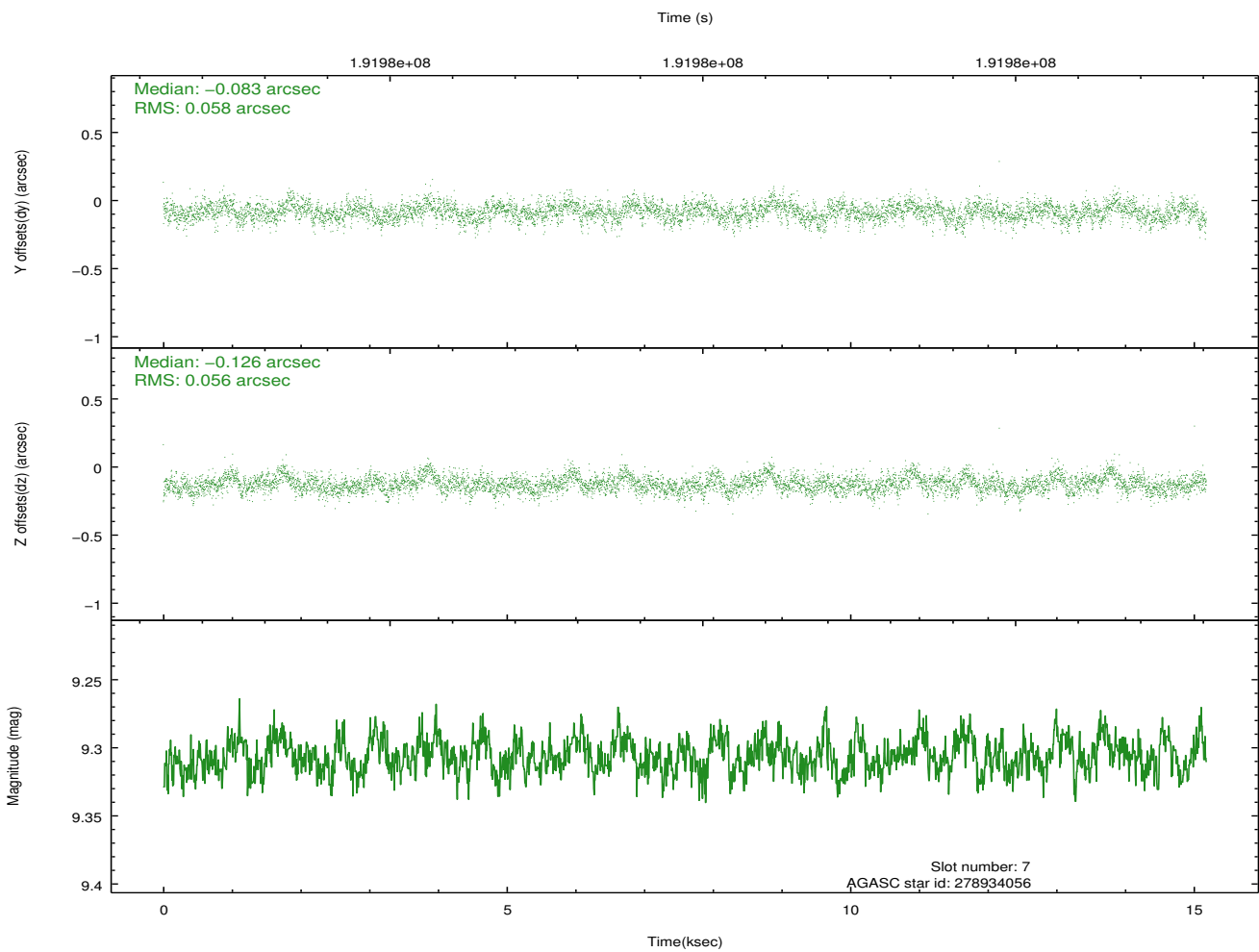
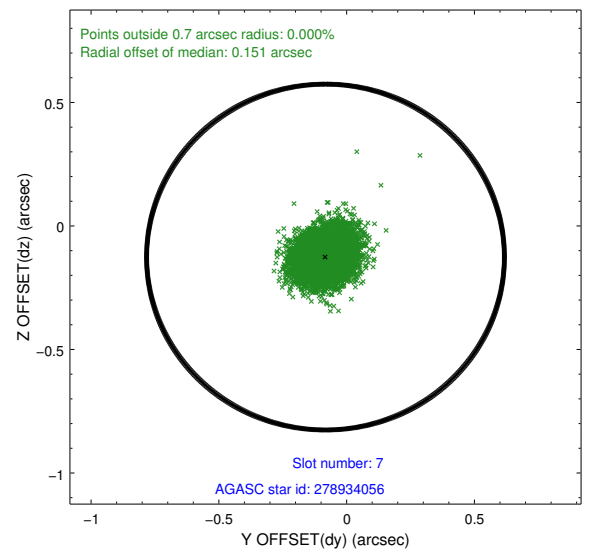
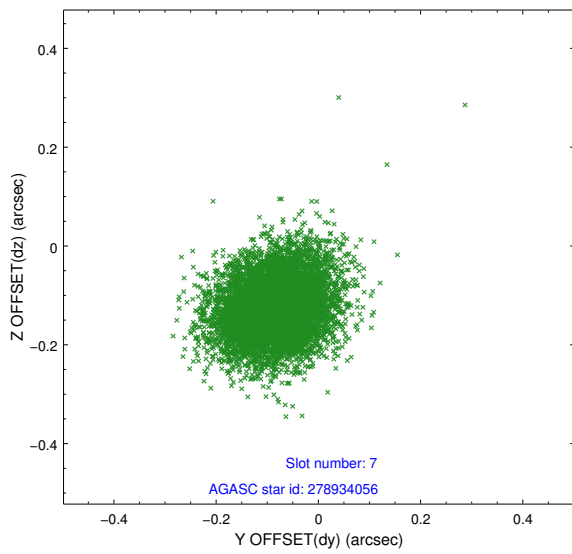
### 2.4.3 Slot 5



## 2.4.4 Slot 6

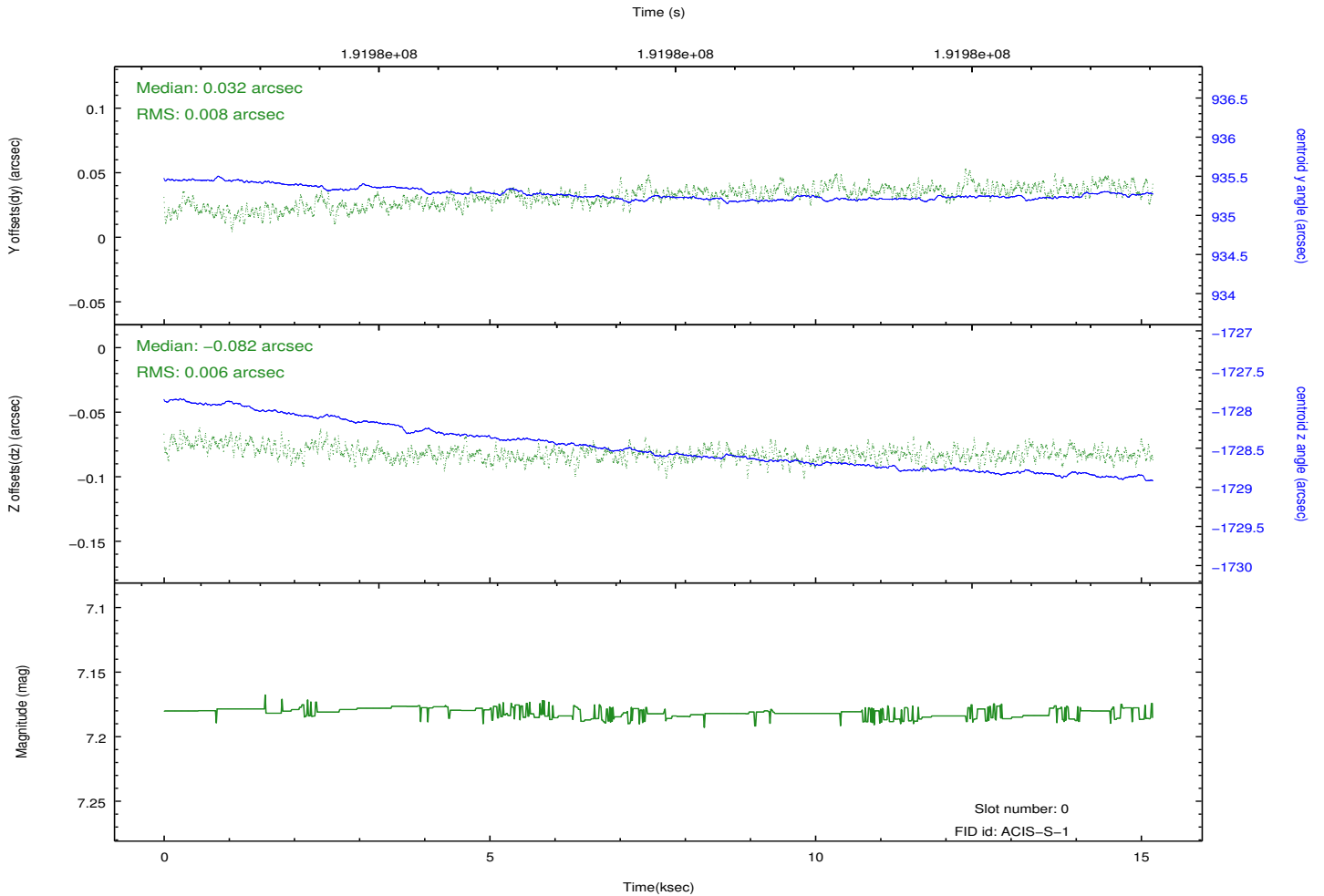
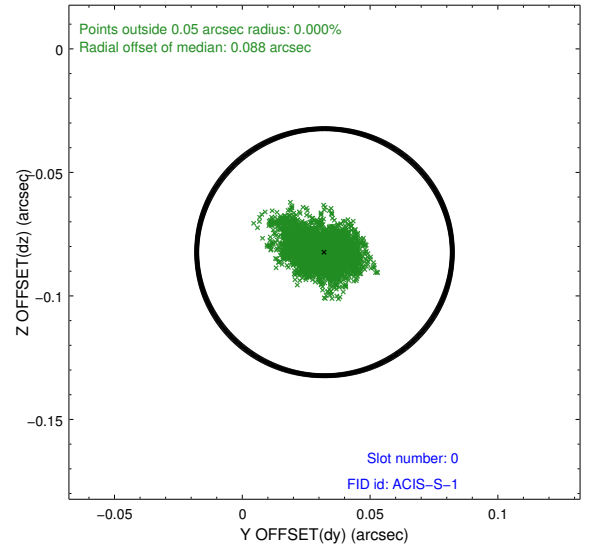
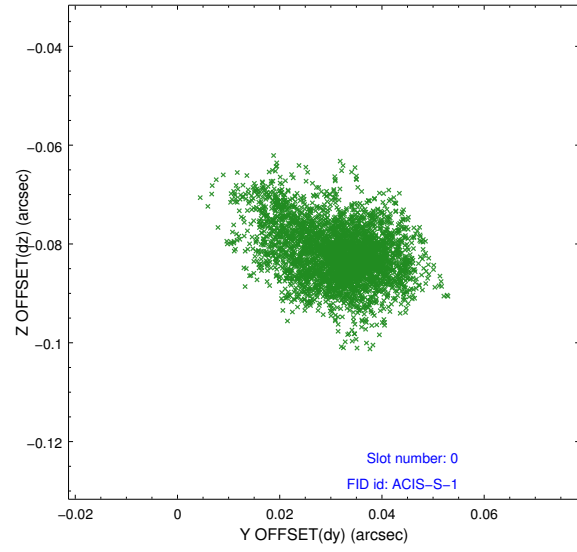


## 2.4.5 Slot 7

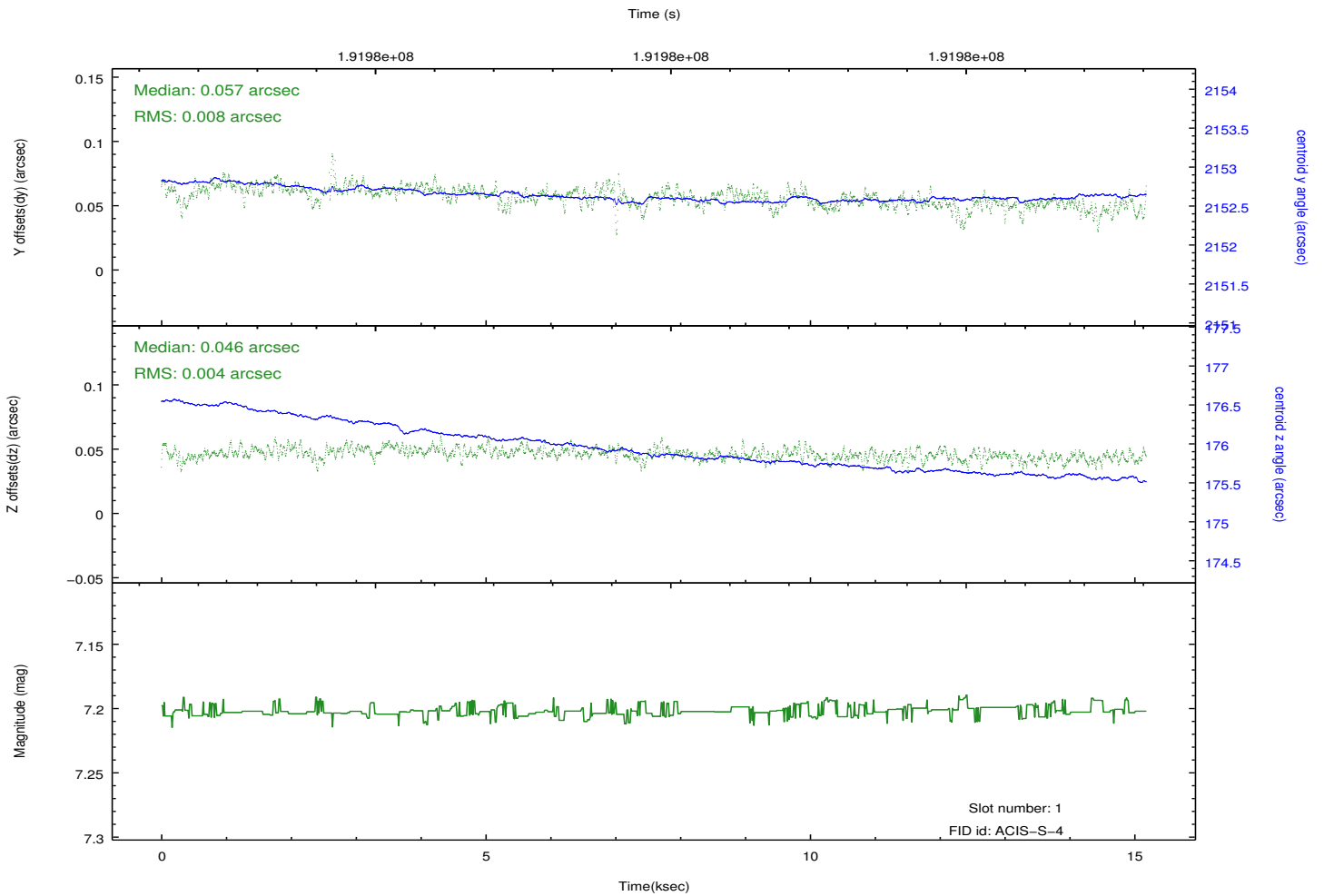
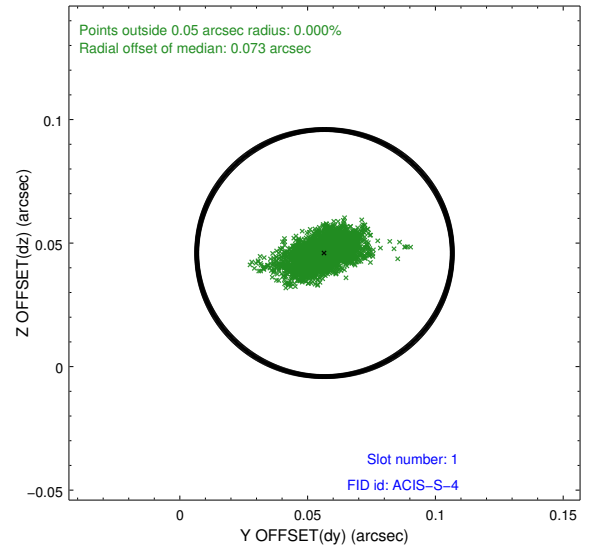
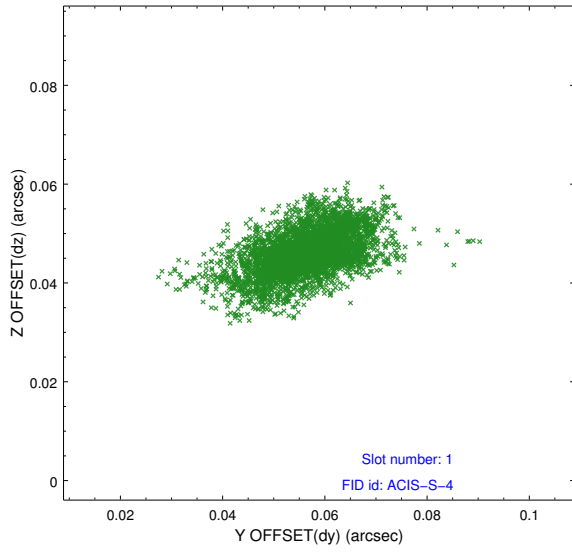


## 2.5 FID Slots

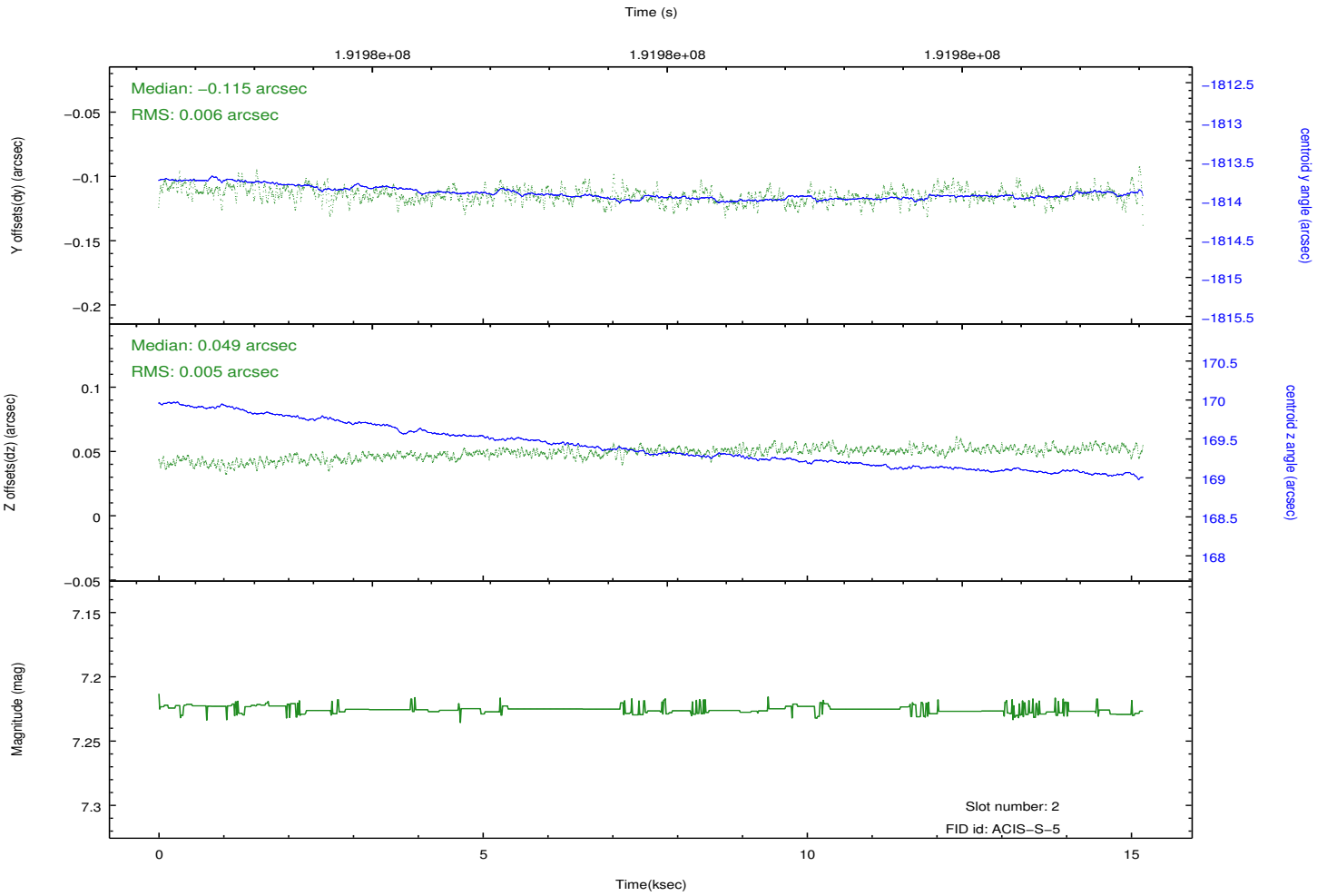
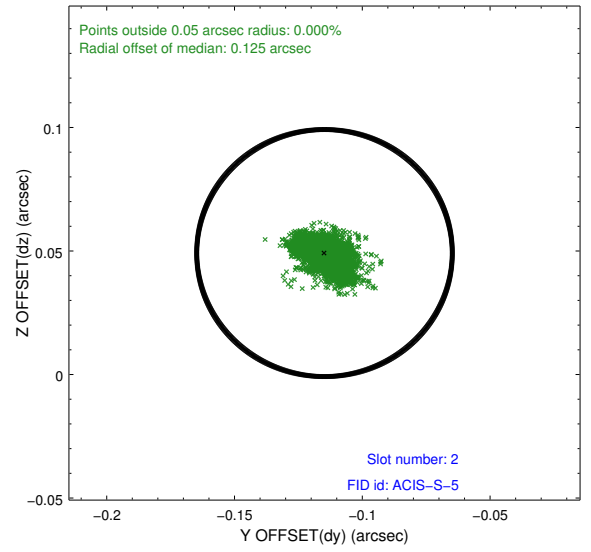
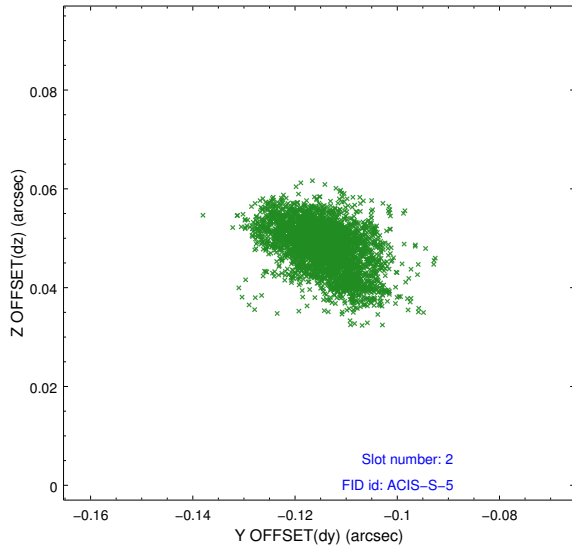
### 2.5.1 Slot 0



## 2.5.2 Slot 1



### 2.5.3 Slot 2



# A Summary

## A.1 Status

V&V Scientist	Joy Nichols
V&V Date (YYYY-MM-DD)	2012.12.12
V&V Edition	1
V&V Disposition and Status	OK
V&V Charge Time	15.181

## A.2 Comments