

V&V Reference Report

L2 ASCDS Version : 8.5

Observation 4948 - L2 Version 3
Chandra X-Ray Center

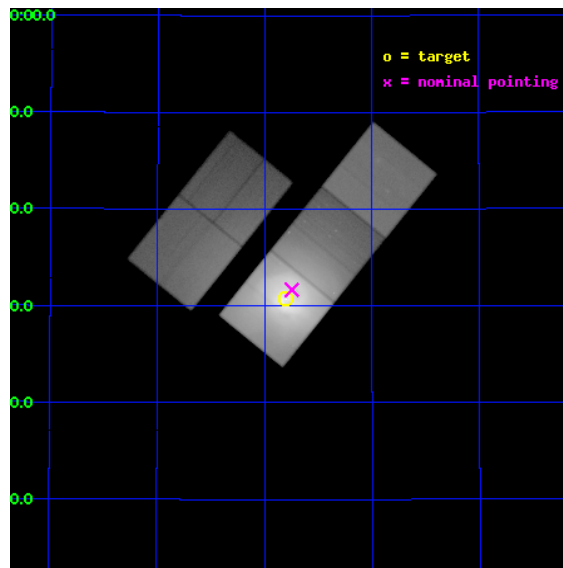
L2 Processing Date : Dec 11 2012

Contents

1	Front	2
2	OBI	3
2.1	OBI	3
2.1.1	Images	3
2.1.2	Bias	3
2.1.3	Parameters	4
2.1.4	Events	4
2.2	Compared Parameters	5
2.3	Aspect	6
2.4	Star Slots	9
2.4.1	Slot 3	9
2.4.2	Slot 4	10
2.4.3	Slot 5	11
2.4.4	Slot 6	12
2.4.5	Slot 7	13
2.5	FID Slots	14
2.5.1	Slot 0	14
2.5.2	Slot 1	15
2.5.3	Slot 2	16
A	Summary	17
A.1	Status	17
A.2	Comments	17

1 Front

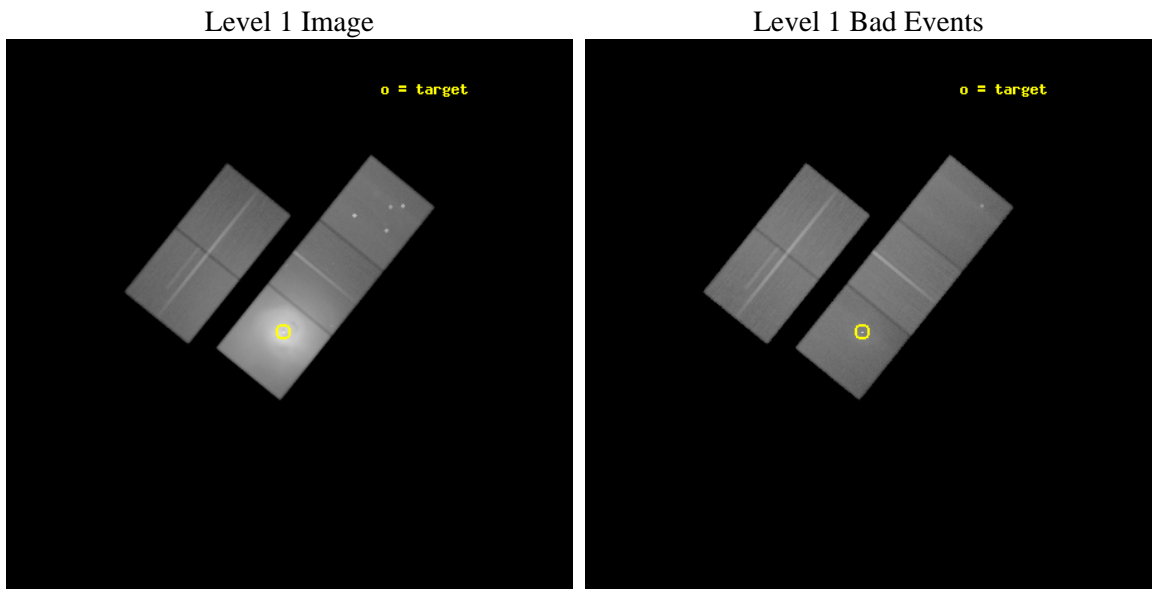
seq_num	800398	Sequence number
obs_id	4948	Observation id
title	A Megasecond Image of the Core of the Perseus Cluster	Proposal tit
observer	Professor Andrew Fabian	Principal investigator
object	Abell 426	Source name
dtycycle	0	
cycle	P	events from which exps? Prim/Second/Both
ra_targ	49.950833	Observer's specified target RA [deg]
dec_targ	41.511722	Observer's specified target Dec [deg]
ra_nom	49.936414870169	Nominal RA [deg]
dec_nom	41.527825898191	Nominal Dec [deg]
roll_nom	128.93699869113	Nominal Roll [deg]
revision	3	Processing version of data
ontime	120180.79976889	Sum of GTIs [s]
livetime	118610.5491441	Livetime [s]
ontime2	120171.37679815	Sum of GTIs [s]
ontime3	120168.23584786	Sum of GTIs [s]
ontime5	120180.79976889	Sum of GTIs [s]
ontime6	120174.51775858	Sum of GTIs [s]
ontime7	120180.79976889	Sum of GTIs [s]
l2events	11855791	Number of level 2 events



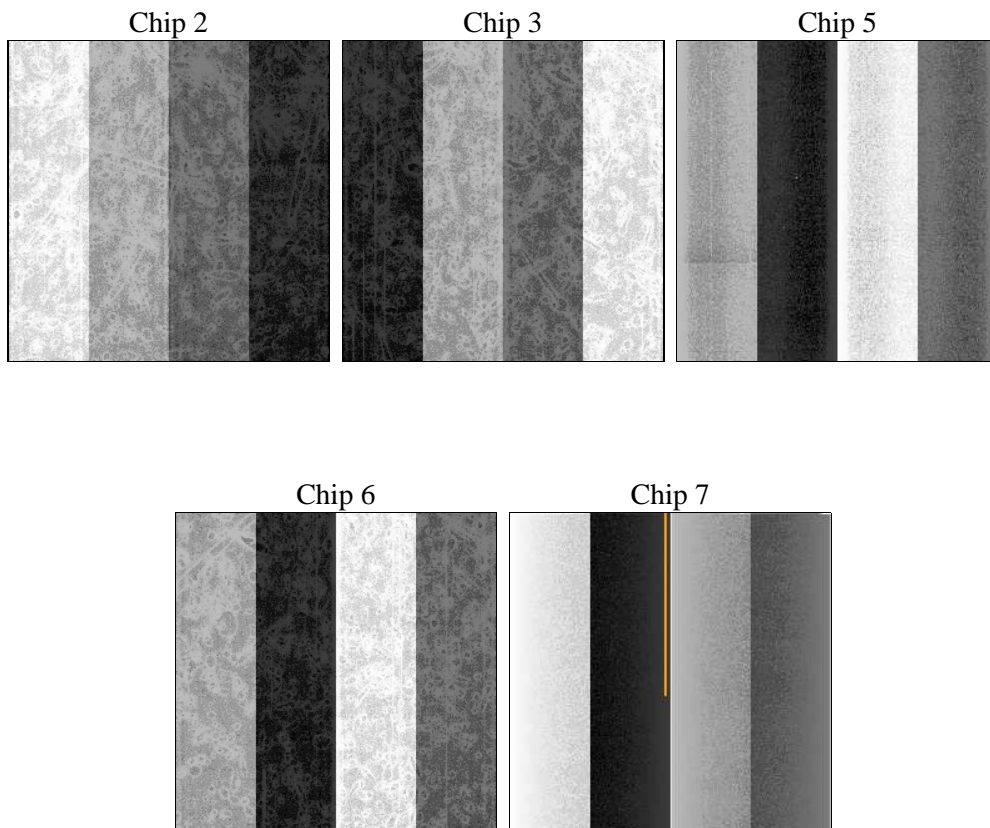
2 OBI

2.1 OBI

2.1.1 Images



2.1.2 Bias



2.1.3 Parameters

obi_num	1	Obi number	sched_exp_time	119995.378000	[s] Scheduled observation exposure time
ascdsver	8.5	Processing system revision	ontime	120180.79976889	Sum of GTIs [s]
caldsver	4.5.4	 	ontime2	120171.37679815	Sum of GTIs [s]
date	2012-12-10T04:42:49	Date and time of file creation	ontime3	120168.23584786	Sum of GTIs [s]
revision	3	Processing version of data	ontime5	120180.79976889	Sum of GTIs [s]
			ontime6	120174.51775858	Sum of GTIs [s]
			ontime7	120180.79976889	Sum of GTIs [s]
			l1events	15532110	Number of level 1 events

2.1.4 Events

	ccd 2	ccd 3	ccd 5	ccd 6	ccd 7		ccd 2	ccd 3	ccd 5	ccd 6	ccd 7
level 1 events	1087329	1254218	1304715	1955427	9930421	grade 0 events	237656	399530	153395	922487	2521552
rejected events	752711	720438	554715	762581	607843		21%	31%	11%	47%	25%
rejected %	69%	57%	42%	38%	6%	grade 1 events	1598	2244	1114	4221	7071
							0%	0%	0%	0%	0%
						grade 2 events	43417	62344	217161	133212	2453234
							3%	4%	16%	6%	24%
						grade 3 events	16995	23516	40065	44408	1090032
							1%	1%	3%	2%	10%
						grade 4 events	16889	23268	39242	44066	1075703
							1%	1%	3%	2%	10%
						grade 5 events	26653	32411	89933	35513	157925
							2%	2%	6%	1%	1%
						grade 6 events	20653	26420	305456	50511	2196959
							1%	2%	23%	2%	22%
						grade 7 events	723468	684485	458349	721009	427945
							66%	54%	35%	36%	4%

2.2 Compared Parameters

Parameter	Planned	Actual	Parameter	Planned	Actual
Instrument	ACIS	ACIS	Obspar format version number	7	7
Detector	ACIS-23567	ACIS-23567	Obspar file type	PREDICTED	ACTUAL
Grating	NONE	NONE	Obspar update status	NONE	UPDATED
Data mode	FAINT	FAINT	Number of optional ACIS chips dropped	0	0
Observation mode	POINTING	POINTING	On-chip summing requested	N	N
[deg] Pointing RA	49.970528	49.93641487016896	Subarray requested	NONE	NONE
[deg] Pointing Dec	41.518367	41.52782589819137	Alternating exposures requested	N	N
[deg] Pointing Roll	128.757760	128.9369986911255	[s] Primary exposure time	0.000000	3.1
[mm] SIM focus pos	-0.684267	-0.6828225247311905			
[mm] SIM defocus	0	0.001444936568705701			
[mm] SIM translation stage pos	-190.132523	-190.1400660498719			
[mm] SIM translation stage offset	0	0.00754346686406393			
[s] Observation start time (MET)	213708336.184000	213706800.00044			
Observation start date	2004-10-09T11:24:32	2004-10-09T11:00:00			
[s] Observation end time (MET)	213828331.184000	213828543.35588			
Observation end date	2004-10-10T20:44:27	2004-10-10T20:49:03			
Read mode	TIMED	TIMED			

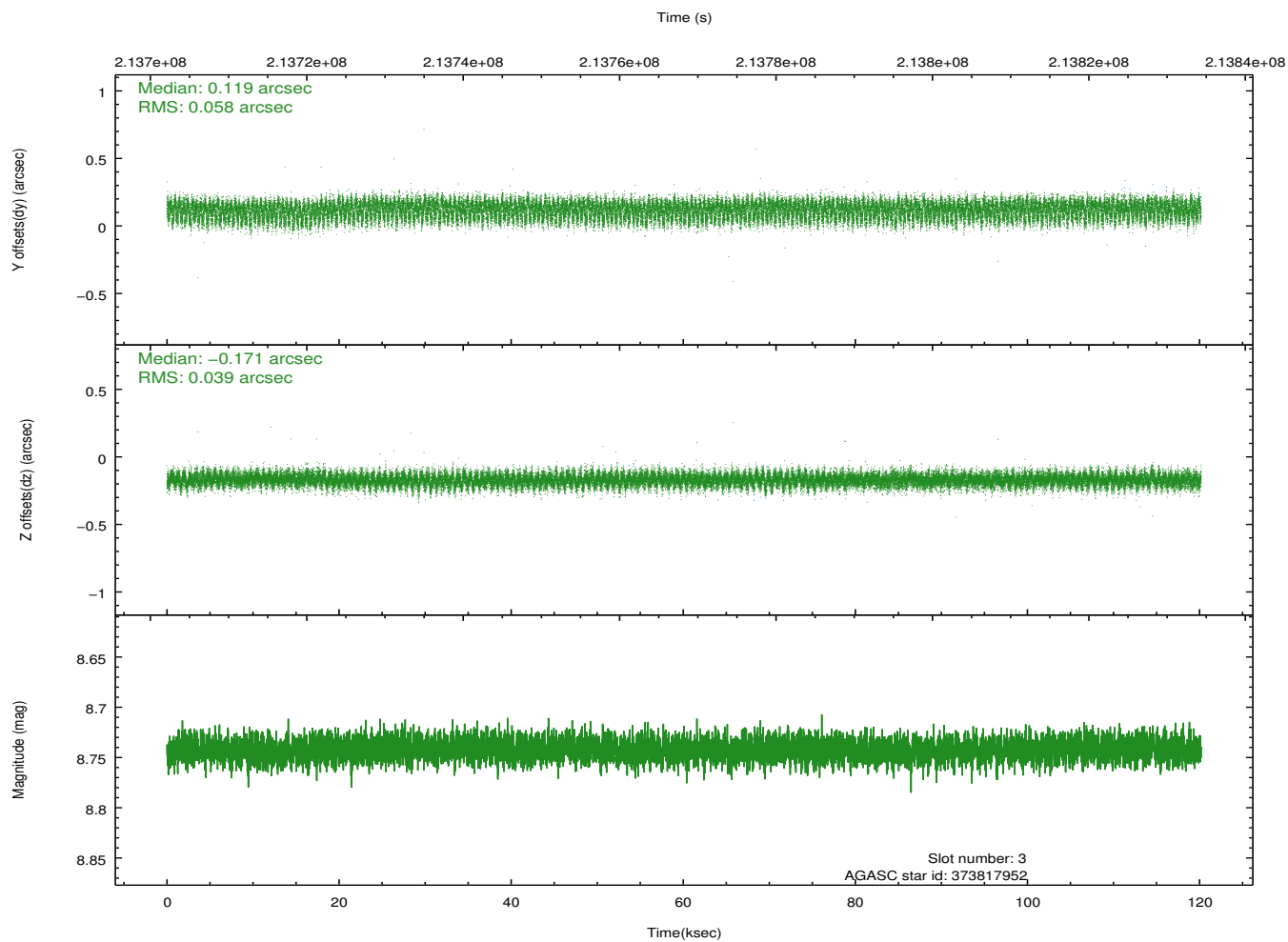
2.3 Aspect

Slot Statistics

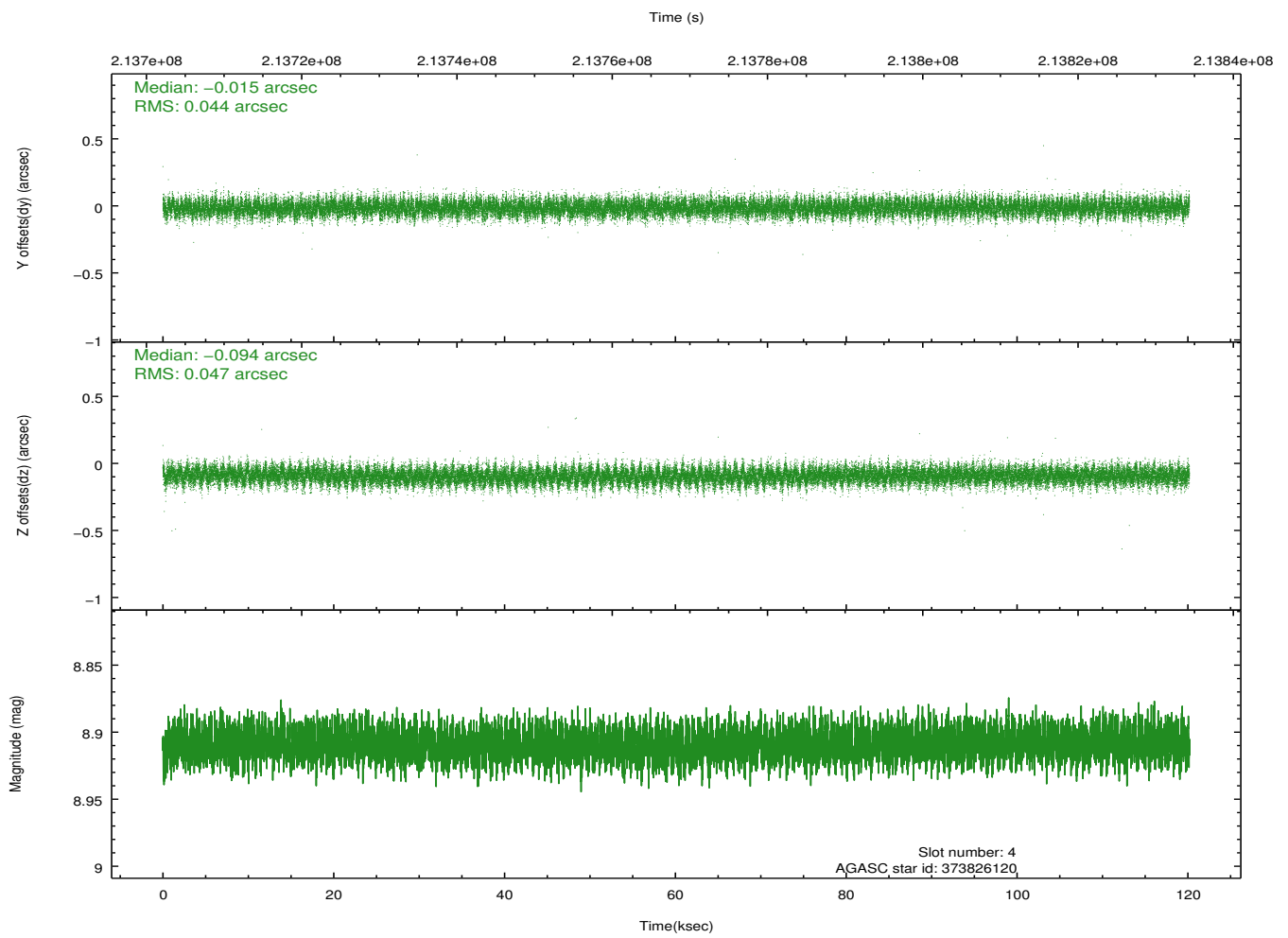
slot	status	id	mag	n_pts	med_dy	med_dz	dr1	dr2	ra	dec	mean_y	mean_z
0	FID	ACIS-S-1	7.19	29310	0.016	-0.015	0.009	0.025	0.000000	0.000000	935.47	-1726.54
1	FID	ACIS-S-4	7.20	29315	0.071	0.007	0.009	0.021	0.000000	0.000000	2152.86	177.76
2	FID	ACIS-S-5	7.24	29311	-0.115	0.021	0.008	0.019	0.000000	0.000000	-1813.67	171.22
3	GUIDE	373817952	8.74	58603	0.119	-0.171	0.074	0.119	49.913424	40.978510	-1418.33	1337.48
4	GUIDE	373826120	8.91	58598	-0.015	-0.094	0.069	0.110	49.738165	41.186341	-537.38	1238.67
5	GUIDE	374345008	9.38	58589	0.045	-0.053	0.088	0.144	48.768668	41.619367	2325.59	2281.03
6	GUIDE	374352808	8.78	58600	-0.151	0.138	0.084	0.165	49.969955	42.208621	1938.93	-1553.88
7	GUIDE	376057824	8.35	58556	0.004	0.172	0.071	0.113	50.665569	41.926280	-14.15	-2375.38

2.4 Star Slots

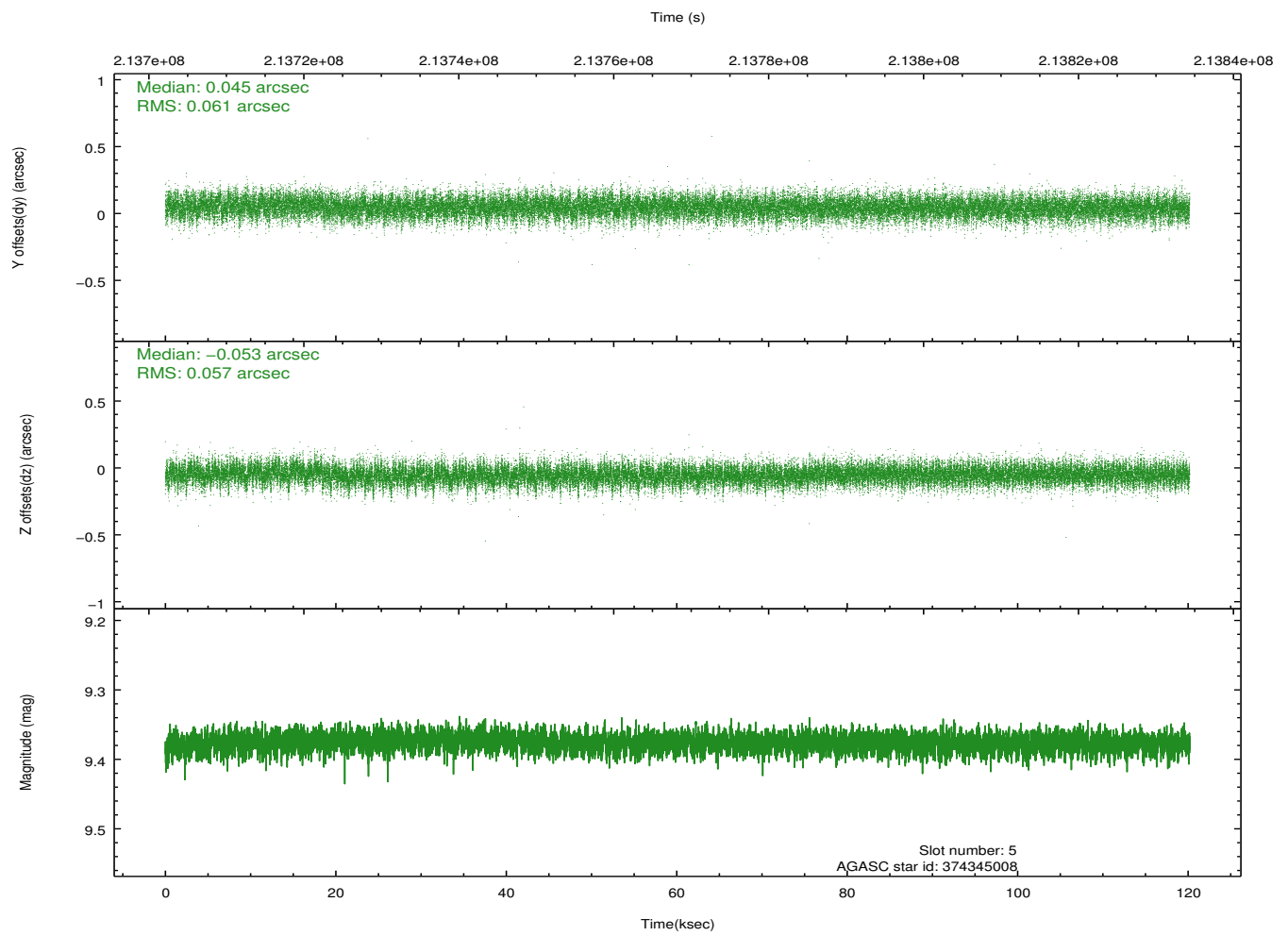
2.4.1 Slot 3



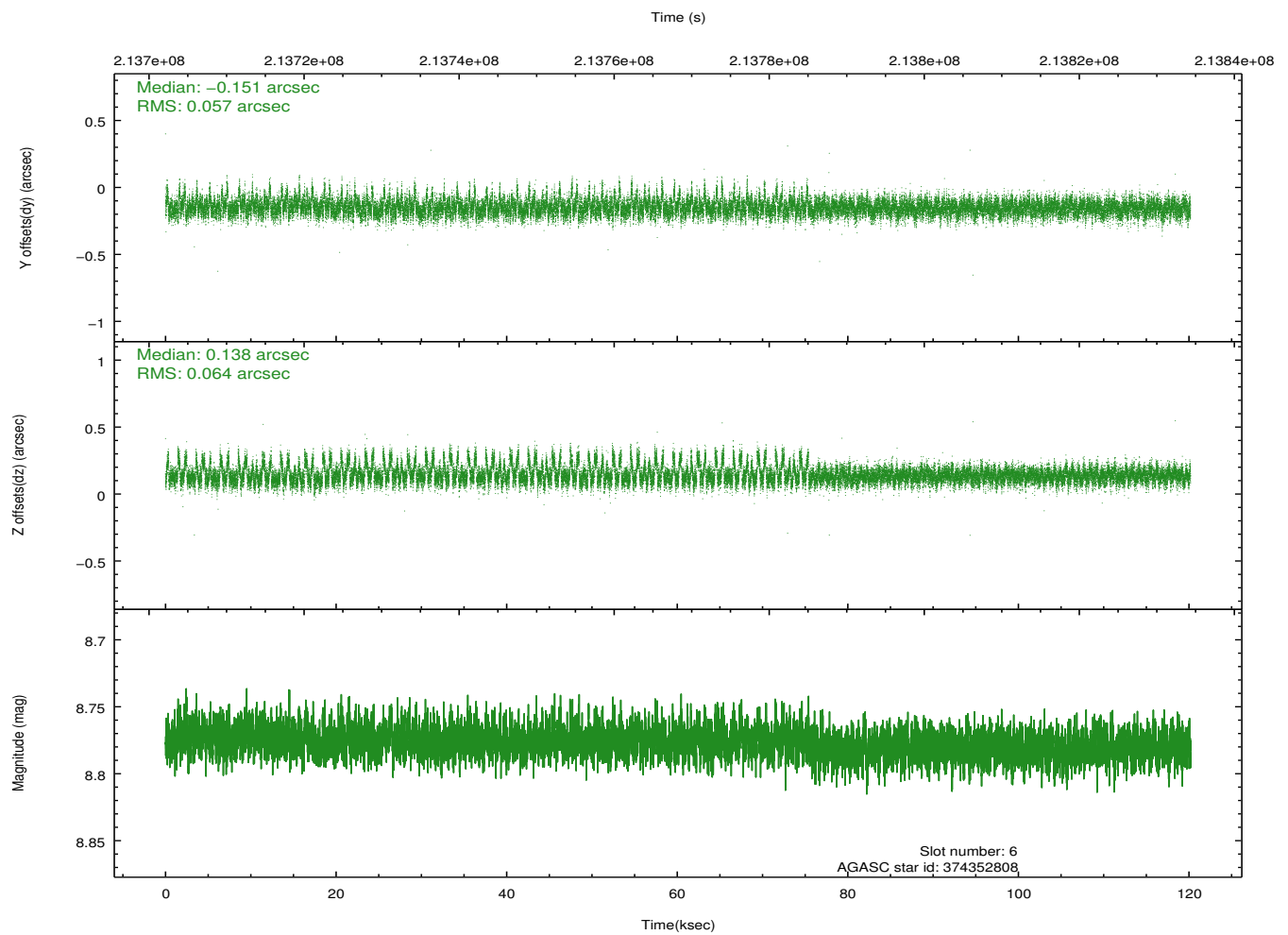
2.4.2 Slot 4



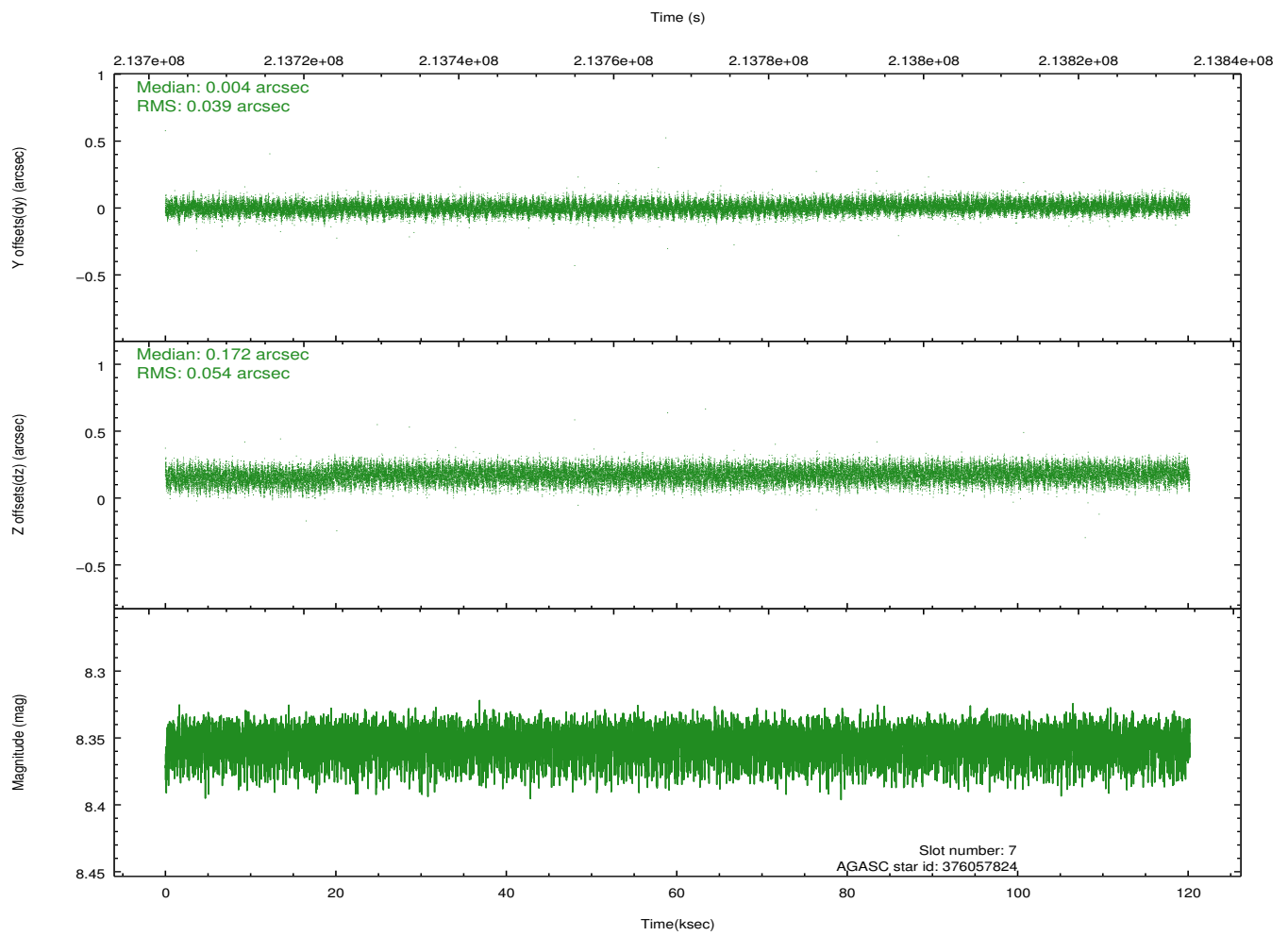
2.4.3 Slot 5



2.4.4 Slot 6

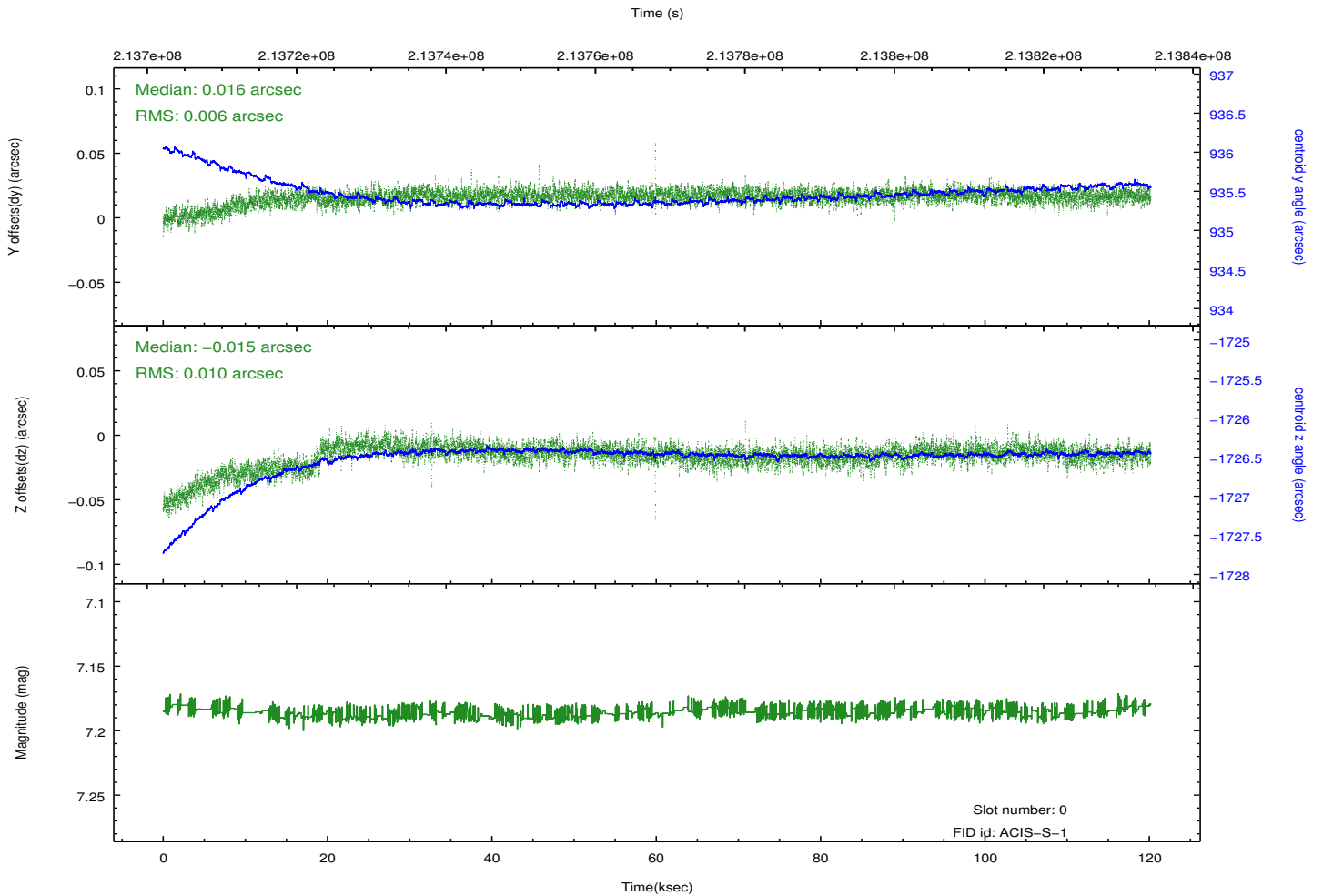
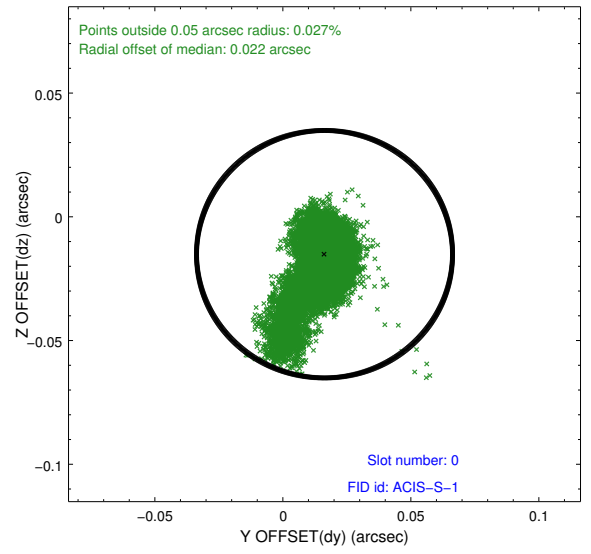
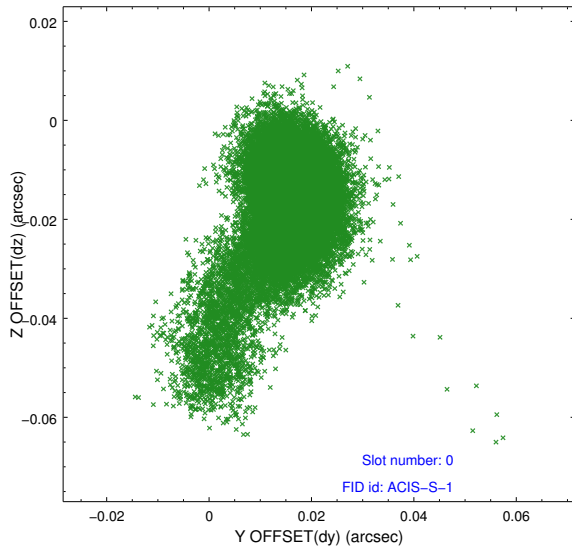


2.4.5 Slot 7

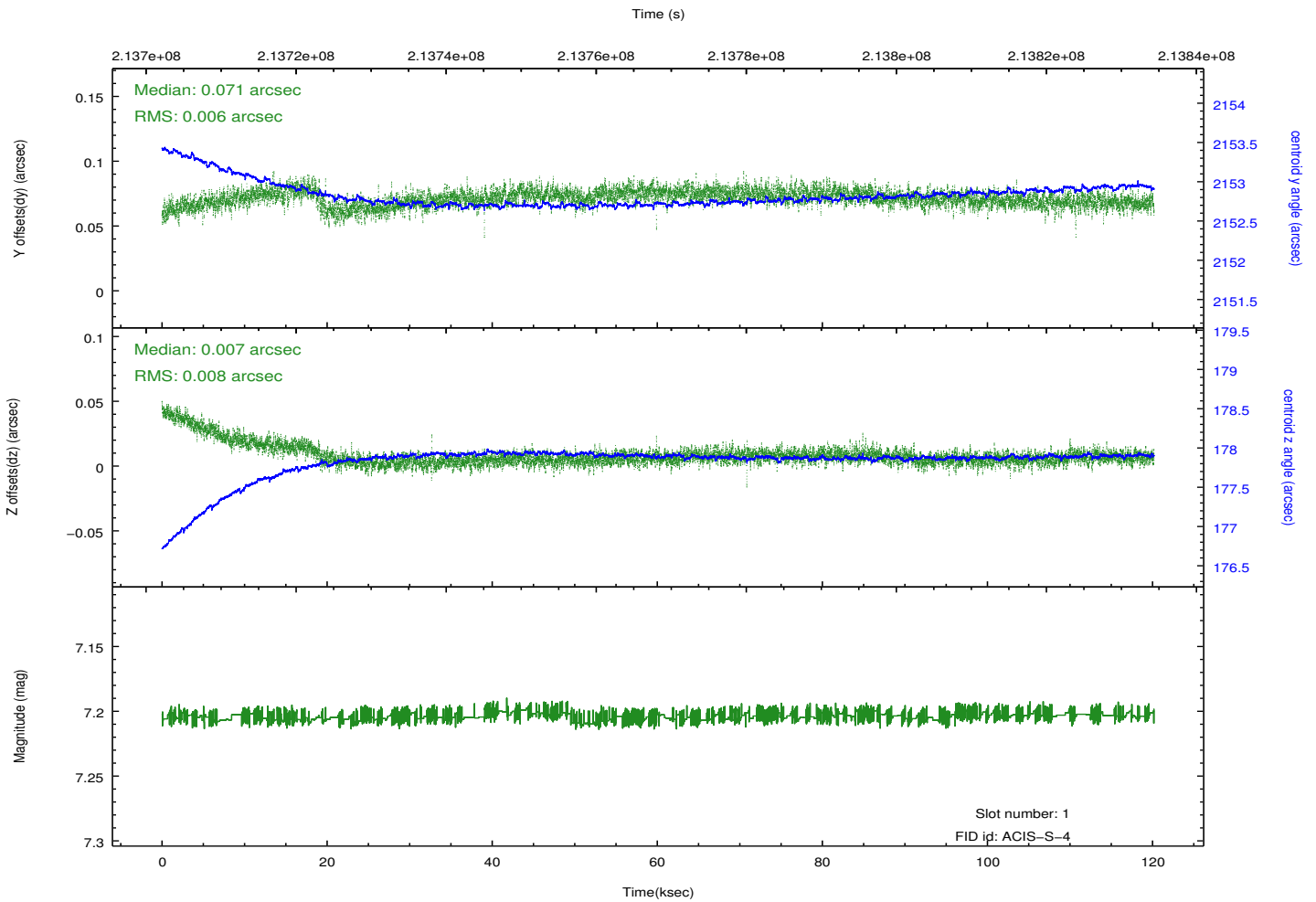
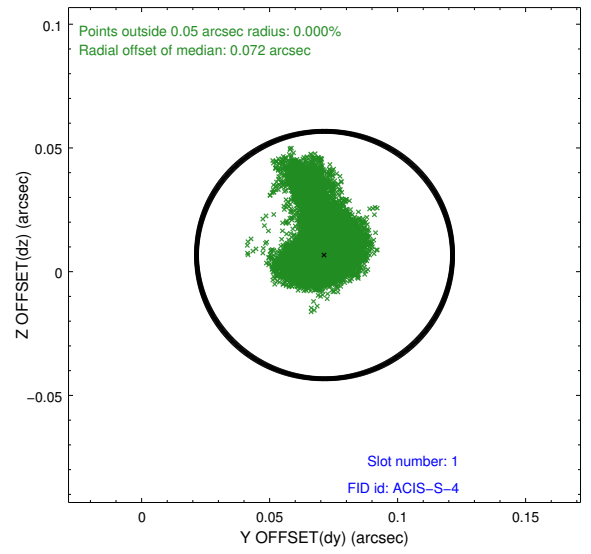
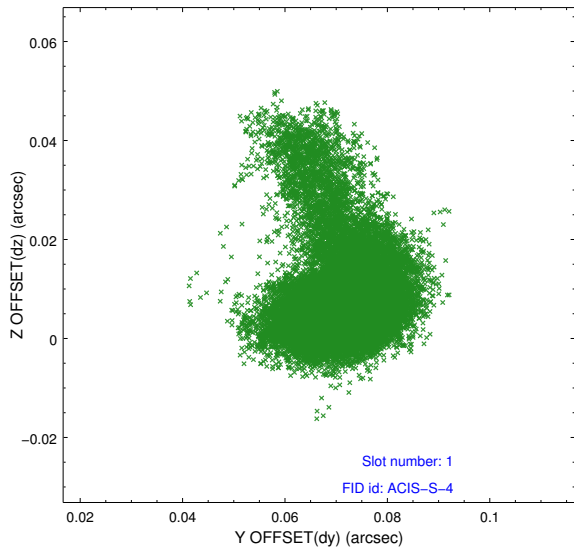


2.5 FID Slots

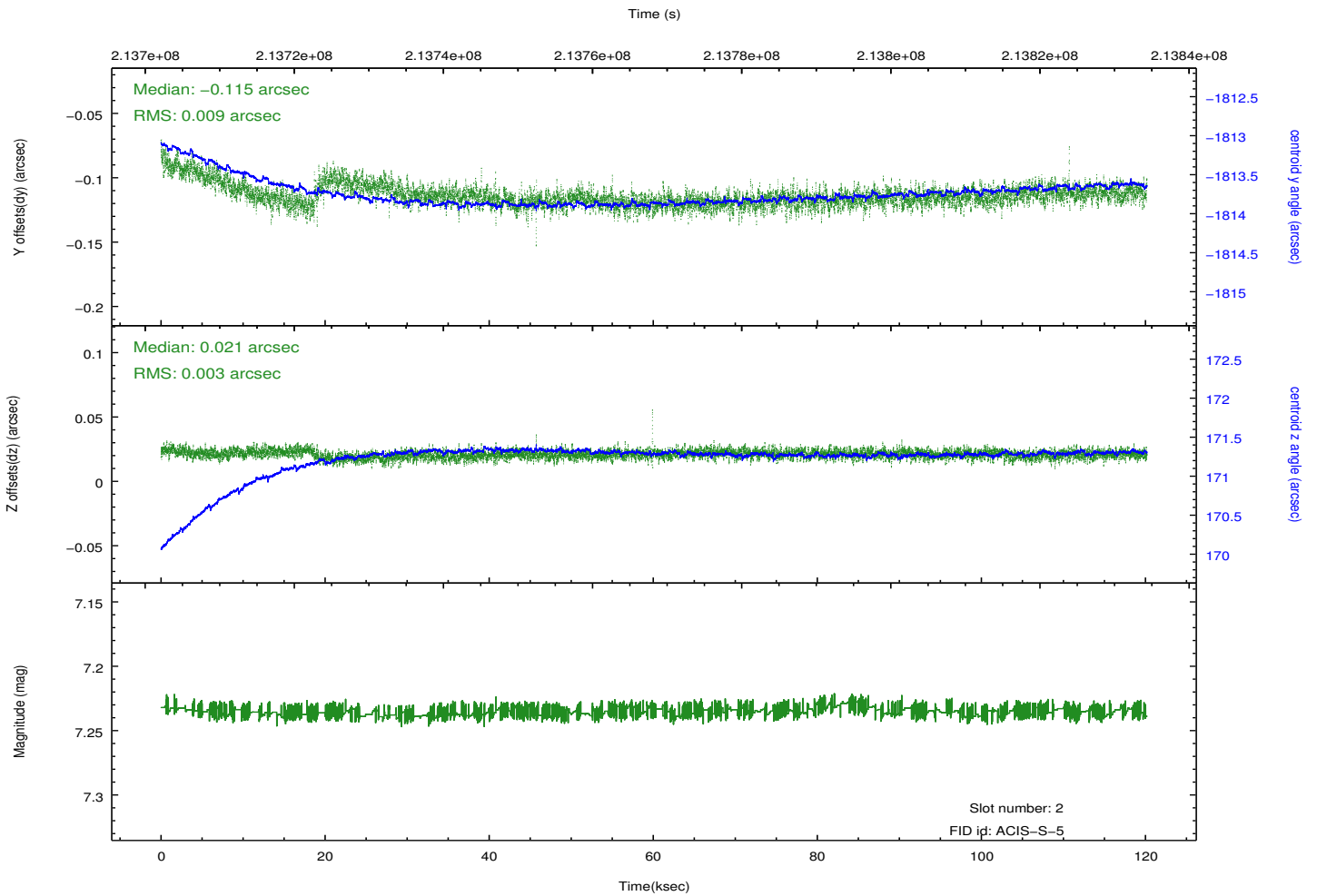
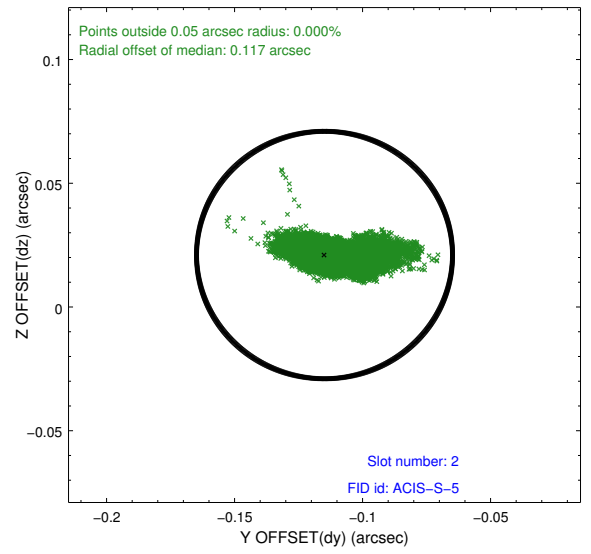
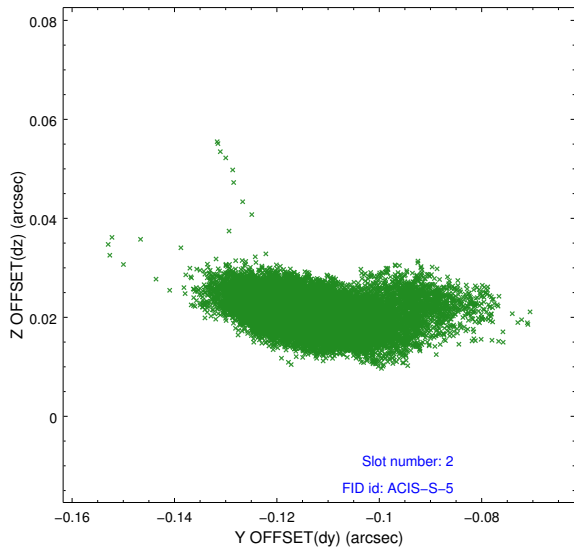
2.5.1 Slot 0



2.5.2 Slot 1



2.5.3 Slot 2



A Summary

A.1 Status

V&V Scientist	Jen Lauer
V&V Date (YYYY-MM-DD)	2013.01.03
V&V Edition	1
V&V Disposition and Status	OK
V&V Charge Time	120.18

A.2 Comments