

V&V Reference Report

L2 ASCDS Version : 8.5.1.1

Observation 5398 - L2 Version 3
Chandra X-Ray Center

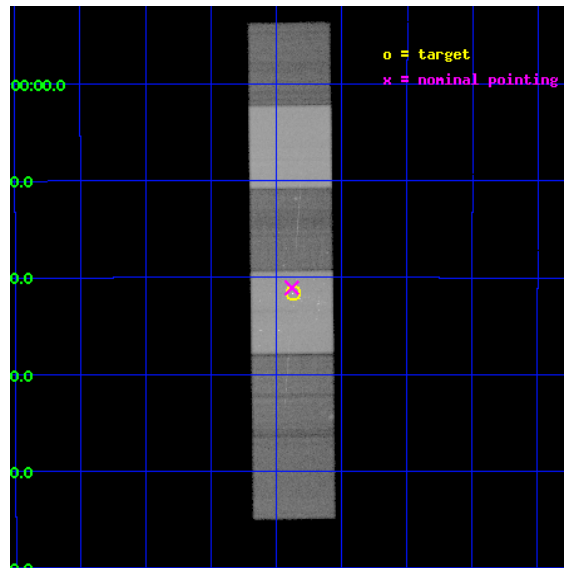
L2 Processing Date : Dec 23 2012

Contents

1	Front	2
2	OBI	3
2.1	OBI	3
2.1.1	Images	3
2.1.2	Bias	3
2.1.3	Parameters	4
2.1.4	Events	4
2.2	Compared Parameters	5
2.3	Aspect	6
2.4	Star Slots	9
2.4.1	Slot 3	9
2.4.2	Slot 4	10
2.4.3	Slot 5	11
2.4.4	Slot 6	12
2.4.5	Slot 7	13
2.5	FID Slots	14
2.5.1	Slot 0	14
2.5.2	Slot 1	15
2.5.3	Slot 2	16
3	Gratings	17
3.1	HEG Arm	17
3.2	MEG Arm	19
A	Summary	21
A.1	Status	21
A.2	Comments	21

1 Front

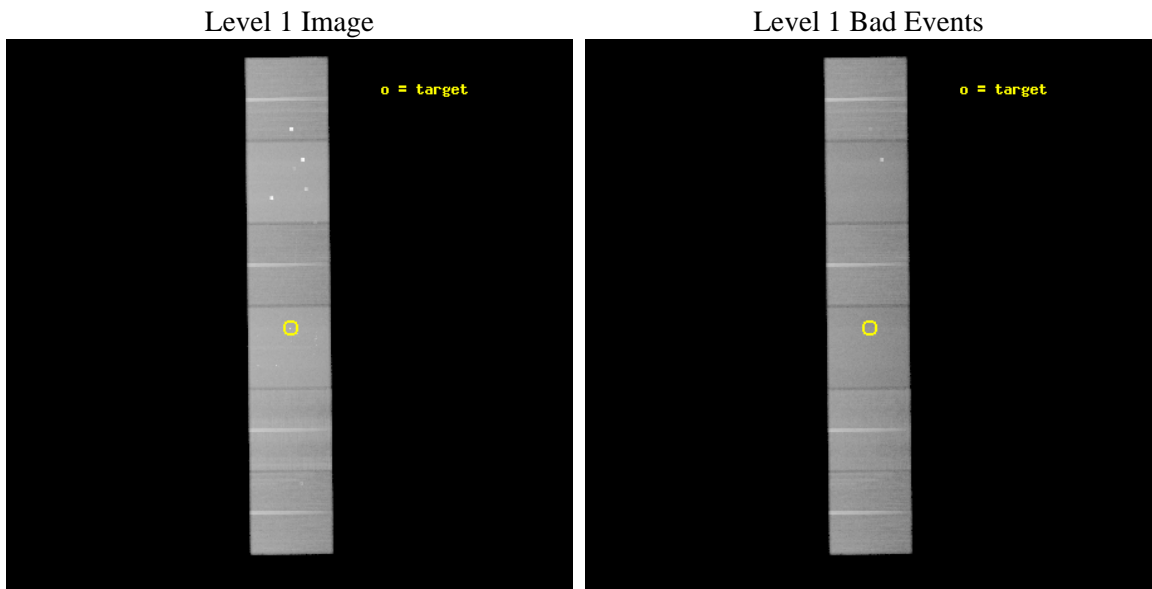
seq_num	200333	Sequence number
obs_id	5398	Observation id
title	A Chandra HETGS Survey of O-Stars	Proposal title
observer	Dr Wayne Waldron	Principal investigator
object	9 Sgr	Source name
dtcycle	0	
cycle	P	events from which exps? Prim/Second/Both
ra_targ	270.968333	Observer's specified target RA [deg]
dec_targ	-24.360722	Observer's specified target Dec [deg]
ra_nom	270.97030879336	Nominal RA [deg]
dec_nom	-24.351167970079	Nominal Dec [deg]
roll_nom	89.356085153318	Nominal Roll [deg]
revision	3	Processing version of data
ontime	102524.67664719	Sum of GTIs [s]
livetime	101226.44745853	Livetime [s]
ontime4	102524.67664722	Sum of GTIs [s]
ontime5	102527.91763747	Sum of GTIs [s]
ontime6	102527.91770709	Sum of GTIs [s]
ontime7	102524.67664719	Sum of GTIs [s]
ontime8	102531.15862772	Sum of GTIs [s]
ontime9	102531.15862775	Sum of GTIs [s]
l2events	1234678	Number of level 2 events



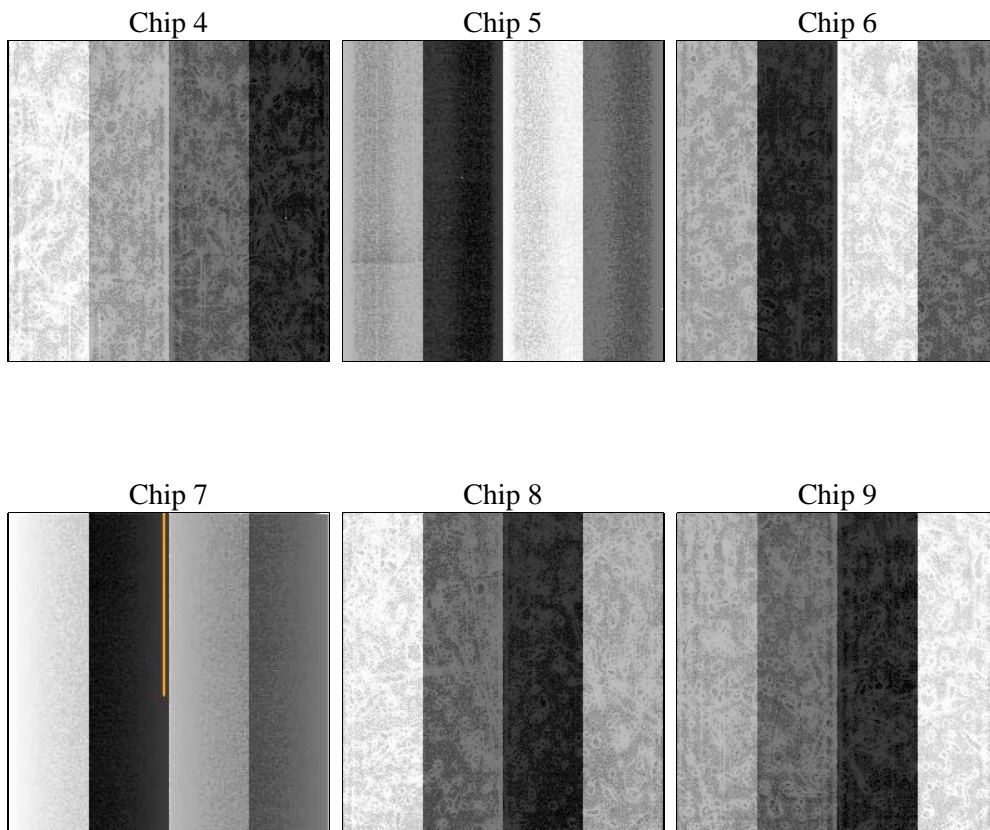
2 OBI

2.1 OBI

2.1.1 Images



2.1.2 Bias



2.1.3 Parameters

obi_num	1	Obi number	sched_exp_time	102350.000000	[s] Scheduled observation exposure time
ascdsver	8.5.1.1	Processing system revision	ontime	102524.67664719	Sum of GTIs [s]
caldbver	4.5.5	 	ontime4	102524.67664722	Sum of GTIs [s]
date	2012-12-23T09:06:12	Date and time of file creation	ontime5	102527.91763747	Sum of GTIs [s]
revision	3	Processing version of data	ontime6	102527.91770709	Sum of GTIs [s]
			ontime7	102524.67664719	Sum of GTIs [s]
			ontime8	102531.15862772	Sum of GTIs [s]
			ontime9	102531.15862775	Sum of GTIs [s]
			l1events	5454746	Number of level 1 events

2.1.4 Events

	ccd 4	ccd 5	ccd 6	ccd 7	ccd 8	ccd 9		ccd 4	ccd 5	ccd 6	ccd 7	ccd 8	ccd 9
level 1 events	855116	1147436	748802	1020863	943519	739010	grade 0 events	75424	66459	43687	40165	73003	43673
rejected events	727092	615144	649898	596736	731283	641108		8%	5%	5%	3%	7%	5%
rejected %	85%	53%	86%	58%	77%	86%	grade 1 events	1082	5980	430	993	673	463
								0%	0%	0%	0%	0%	0%
							grade 2 events	20499	168325	20526	87142	46947	19018
								2%	14%	2%	8%	4%	2%
							grade 3 events	9739	19624	9142	38418	21958	9468
								1%	1%	1%	3%	2%	1%
							grade 4 events	9458	19054	8891	37861	20495	9249
								1%	1%	1%	3%	2%	1%
							grade 5 events	33257	81118	34418	95547	45755	36801
								3%	7%	4%	9%	4%	4%
							grade 6 events	15652	268935	19413	228342	54413	18850
								1%	23%	2%	22%	5%	2%
							grade 7 events	690005	517941	612295	492395	680275	601488
								80%	45%	81%	48%	72%	81%

2.2 Compared Parameters

Parameter	Planned	Actual	Parameter	Planned	Actual
Instrument	ACIS	ACIS	Obspar format version number	7	7
Detector	ACIS-456789	ACIS-456789	Obspar file type	PREDICTED	ACTUAL
Grating	HETG	HETG	Obspar update status	NONE	UPDATED
Data mode	FAINT	FAINT	Number of optional ACIS chips dropped	0	0
Observation mode	POINTING	POINTING	On-chip summing requested	N	N
[deg] Pointing RA	270.985315	270.9703087933649	Subarray requested	NONE	NONE
[deg] Pointing Dec	-24.374722	-24.35116797007942	Alternating exposures requested	N	N
[deg] Pointing Roll	89.205648	89.35608515331802	[s] Primary exposure time	0.000000	3.2
[mm] SIM focus pos	-0.684267	-0.6828225247311905			
[mm] SIM defocus	0	0.001444936568705701			
[mm] SIM translation stage pos	-190.132523	-190.1400660498719			
[mm] SIM translation stage offset	0	0.00754346686406393			
[s] Observation start time (MET)	232226193.184000	232224138.72401			
Observation start date	2005-05-11T19:15:29	2005-05-11T18:42:18			
[s] Observation end time (MET)	232328543.184000	232329467.7288			
Observation end date	2005-05-12T23:41:19	2005-05-12T23:57:47			
Read mode	TIMED	TIMED			

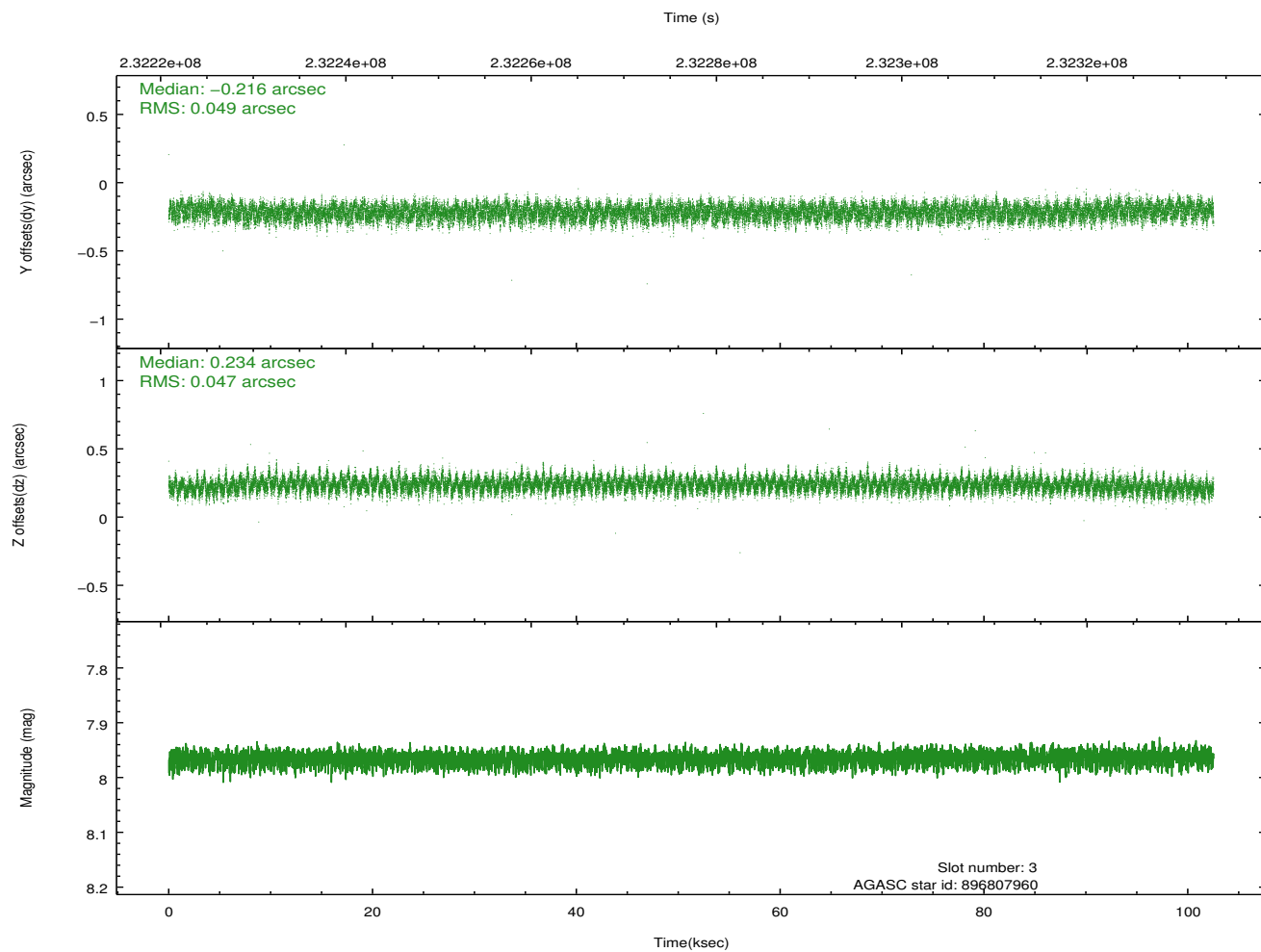
2.3 Aspect

Slot Statistics

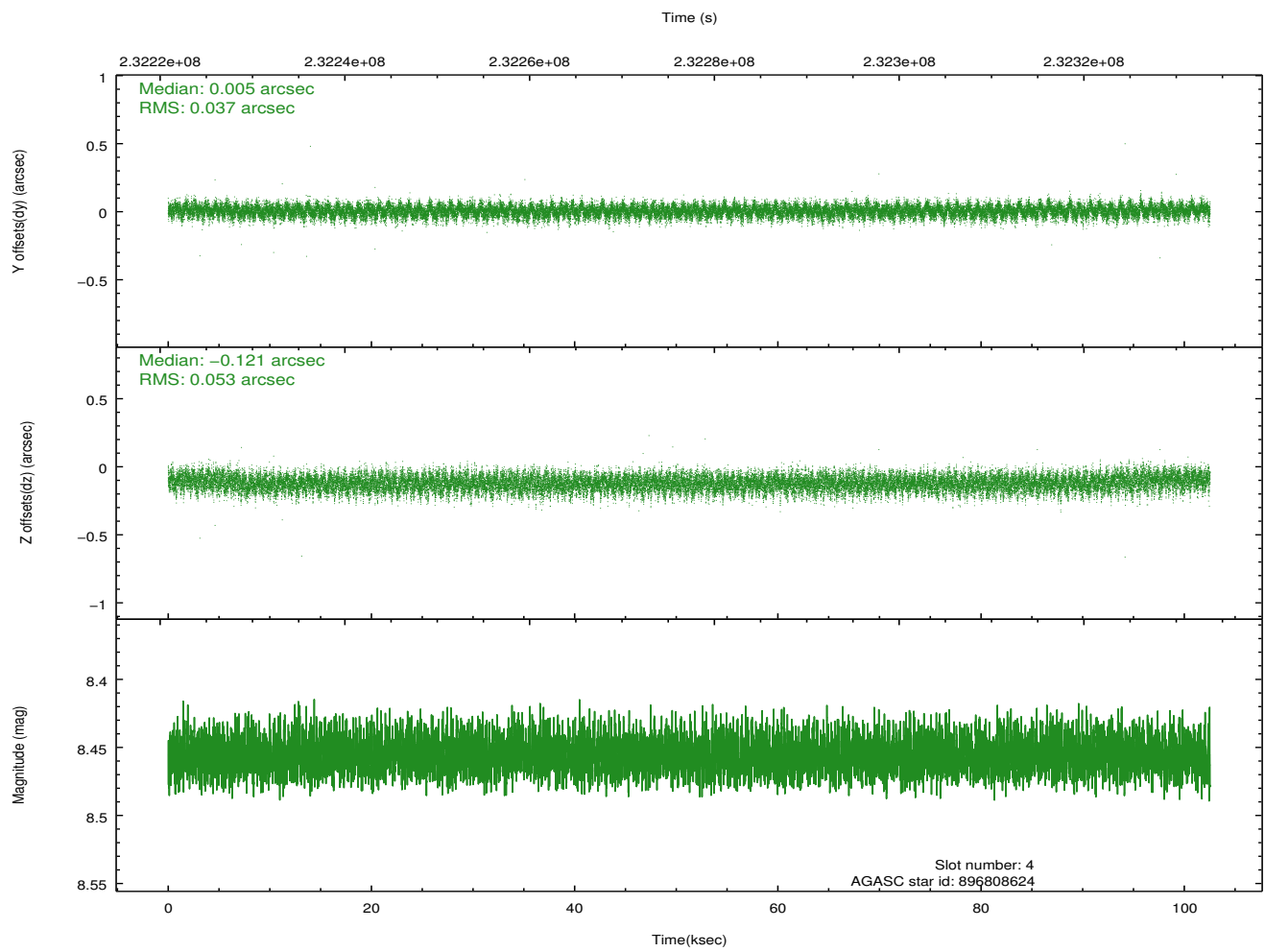
slot	status	id	mag	n_pts	med_dy	med_dz	dr1	dr2	ra	dec	mean_y	mean_z
0	FID	ACIS-S-2	7.10	25002	-0.046	-0.021	0.008	0.019	0.000000	0.000000	-760.49	-1731.43
1	FID	ACIS-S-4	7.21	25001	0.104	0.027	0.009	0.020	0.000000	0.000000	2152.93	177.27
2	FID	ACIS-S-5	7.23	25003	-0.090	0.002	0.009	0.015	0.000000	0.000000	-1813.54	170.71
3	GUIDE	896807960	7.96	50004	-0.216	0.234	0.072	0.115	271.641091	-23.945331	1571.01	-2135.46
4	GUIDE	896808624	8.46	49989	0.005	-0.121	0.068	0.111	270.460163	-24.157029	756.47	1735.73
5	GUIDE	897319440	7.77	50008	0.054	0.141	0.065	0.102	271.242462	-24.680808	-1090.42	-856.30
6	GUIDE	897324960	7.66	50008	0.050	-0.312	0.057	0.090	270.333871	-24.632185	-961.47	2118.28
7	GUIDE	897327936	7.22	50005	0.107	0.055	0.060	0.097	271.293962	-24.398569	-72.38	-1012.82

2.4 Star Slots

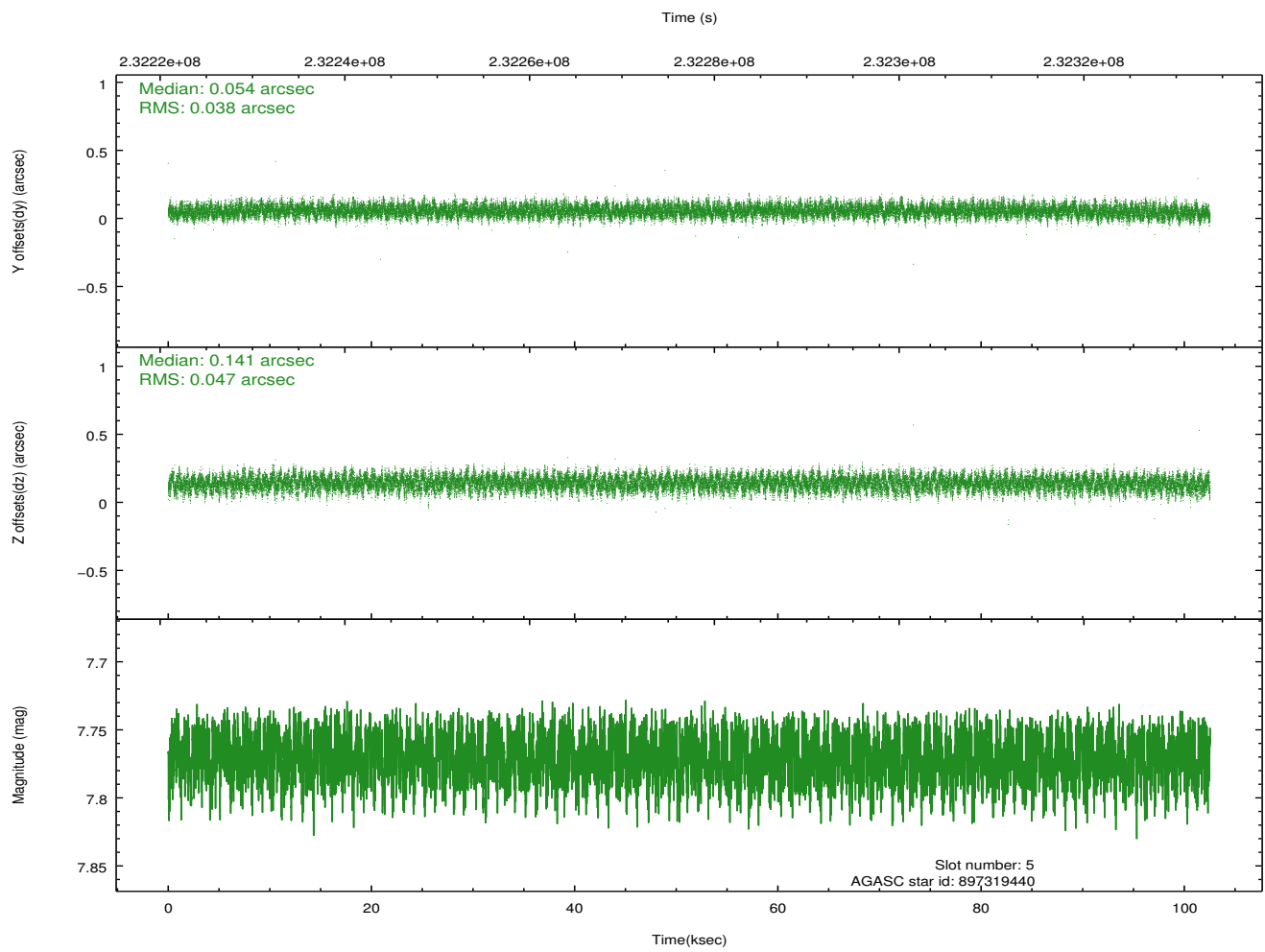
2.4.1 Slot 3



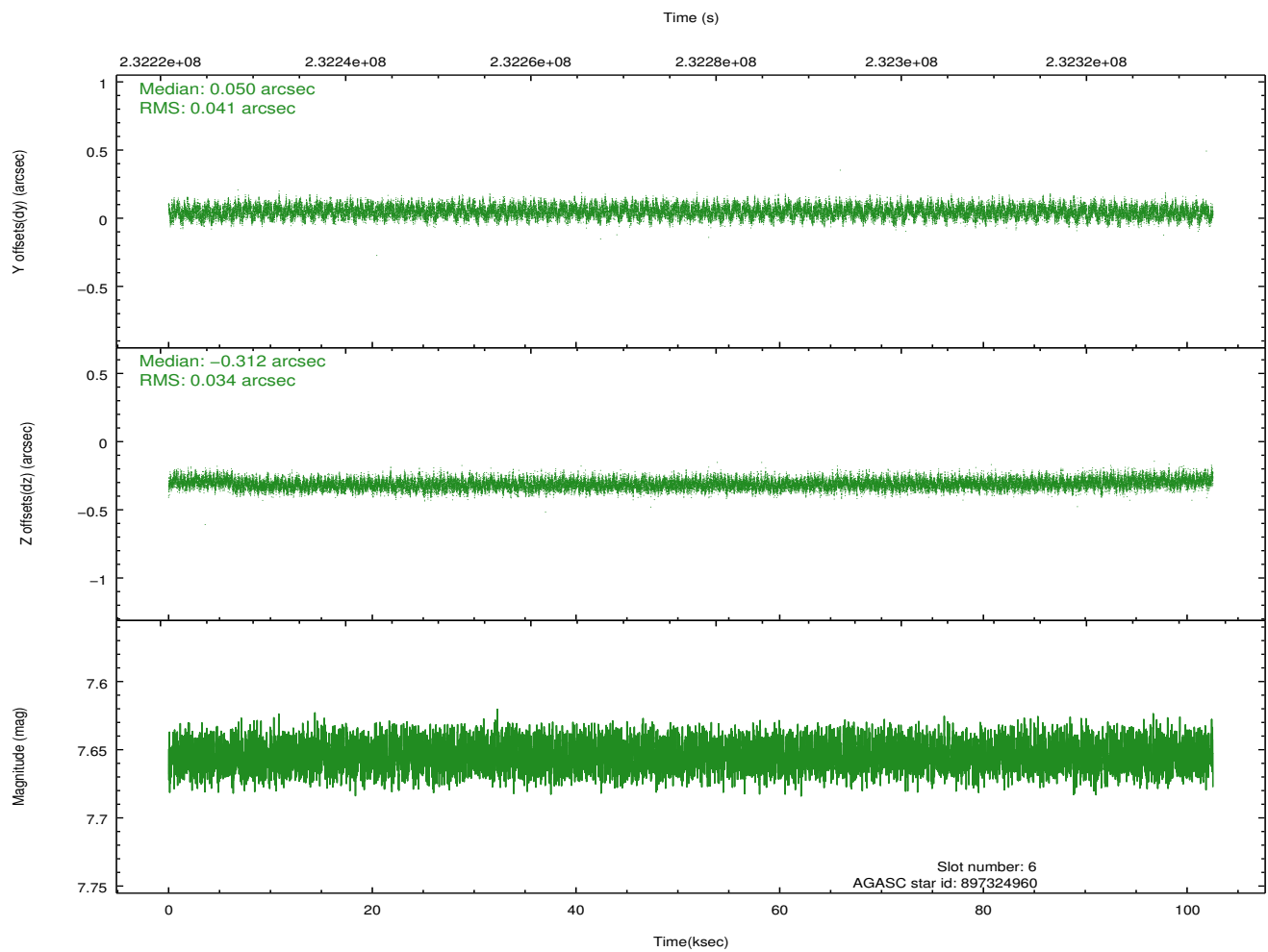
2.4.2 Slot 4



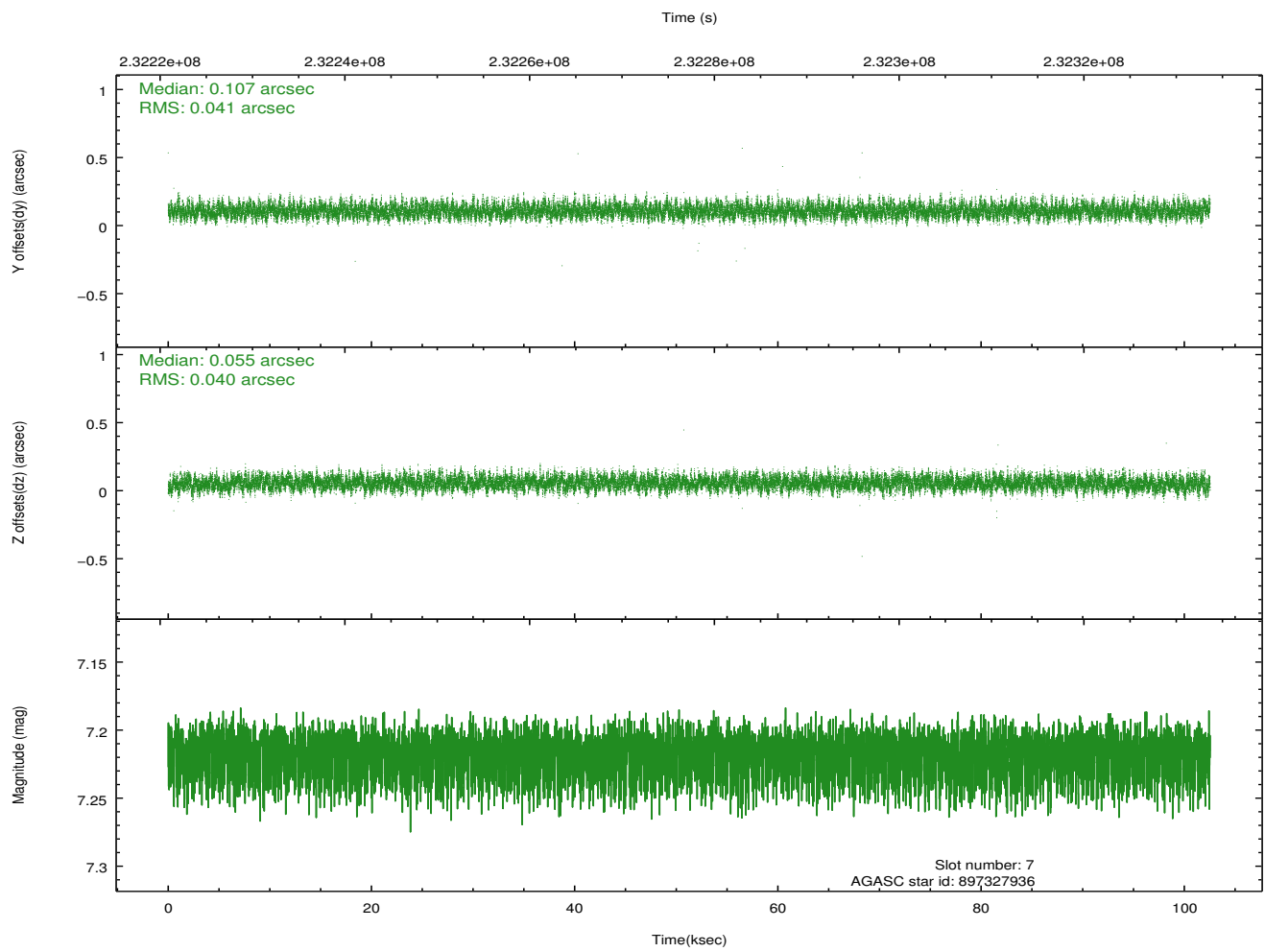
2.4.3 Slot 5



2.4.4 Slot 6

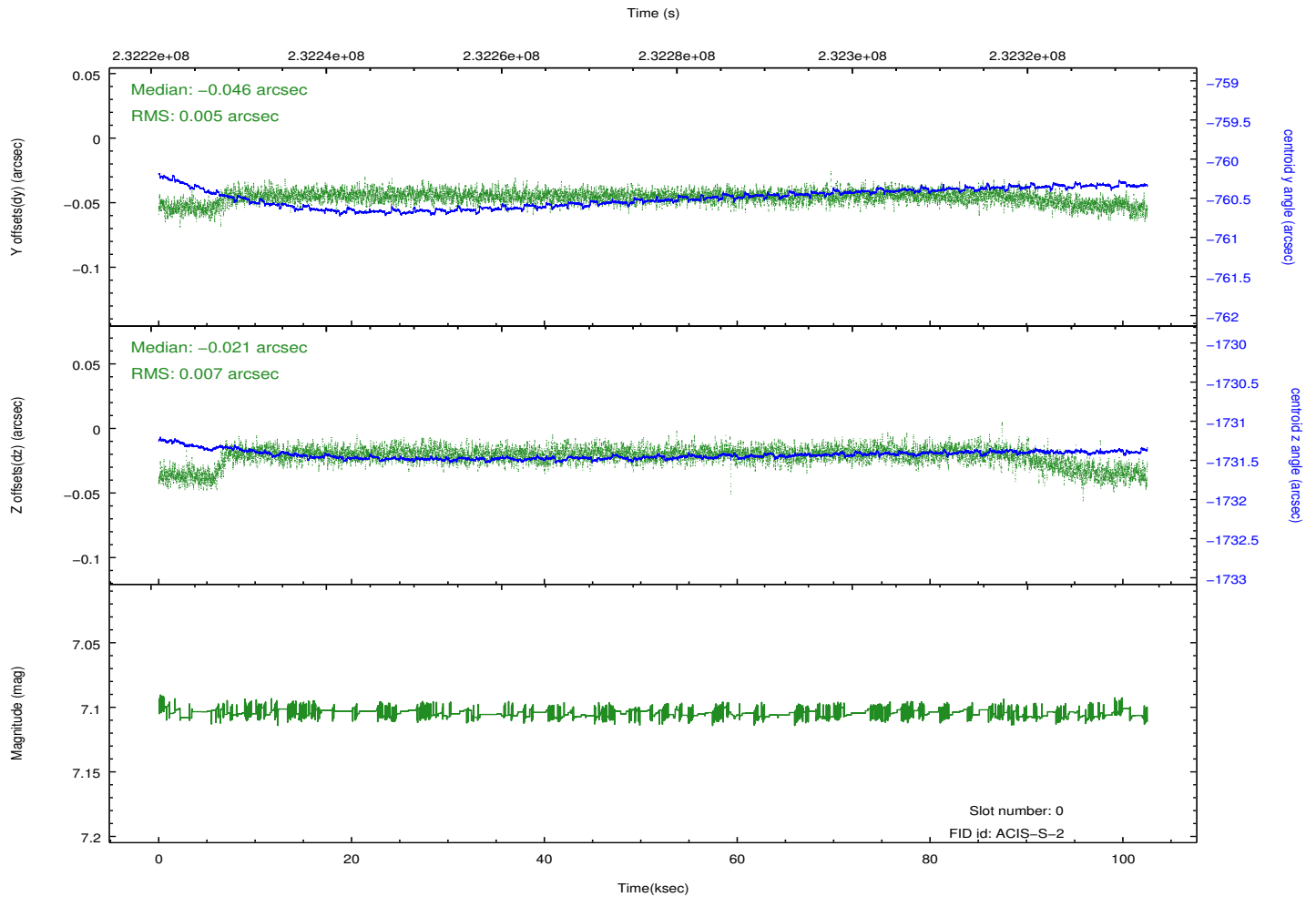
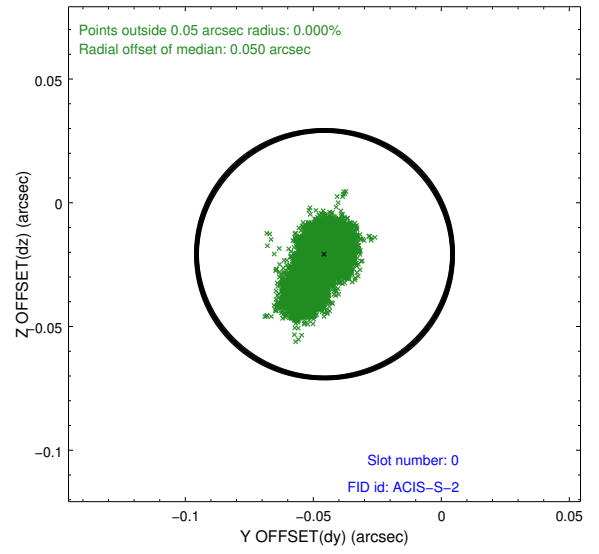
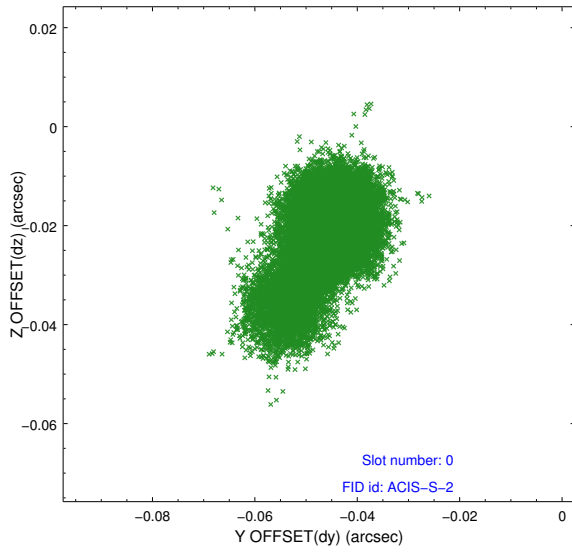


2.4.5 Slot 7

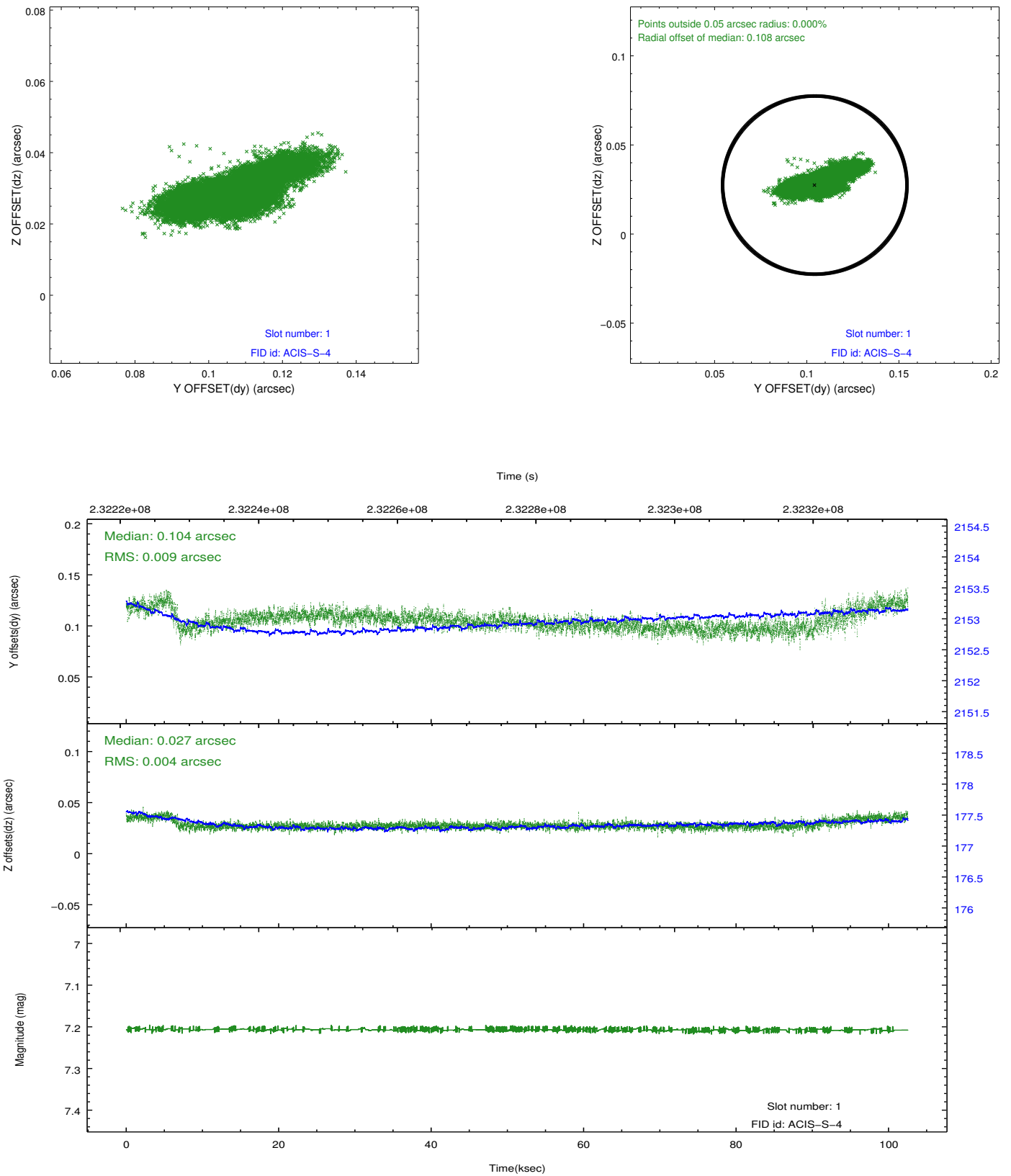


2.5 FID Slots

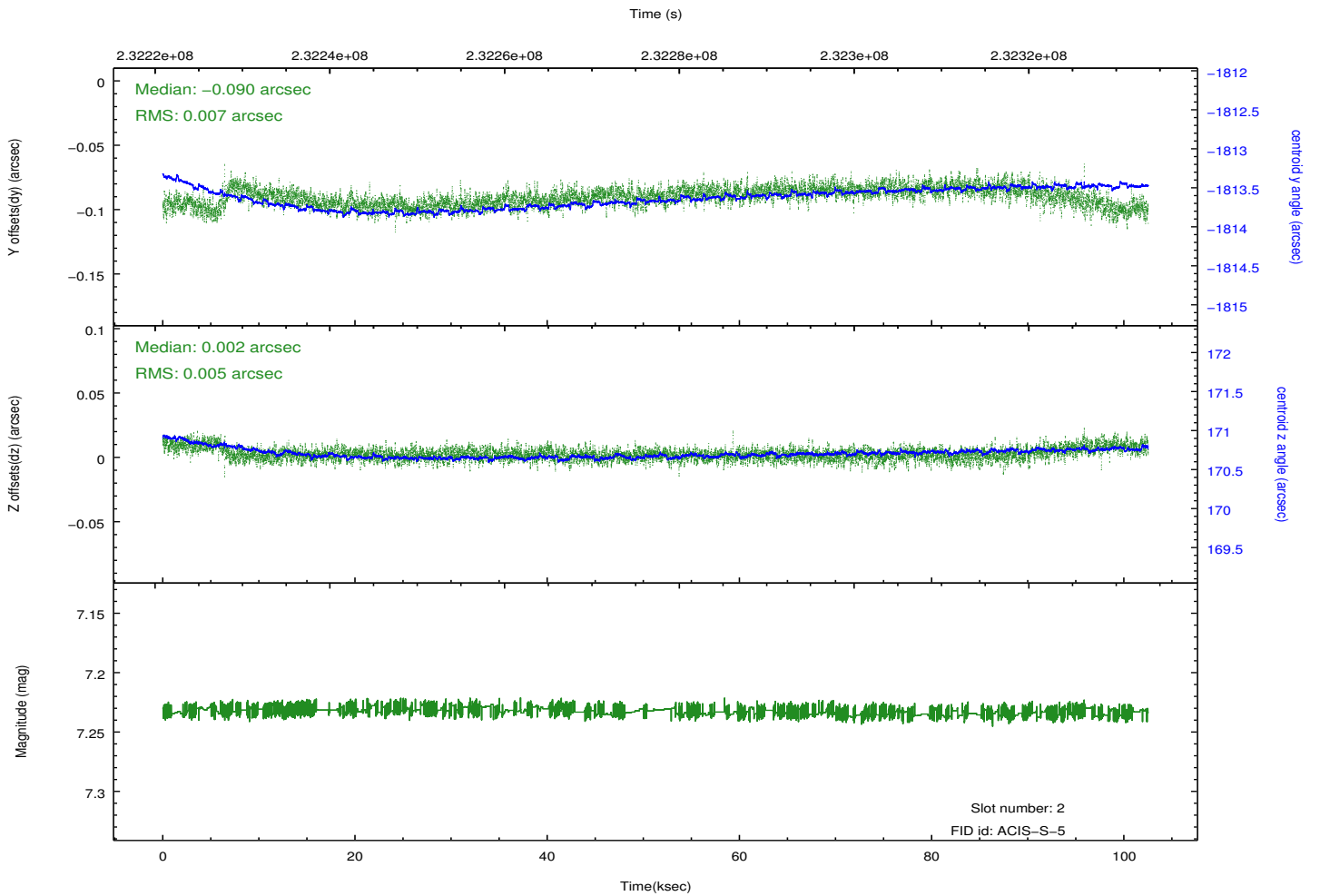
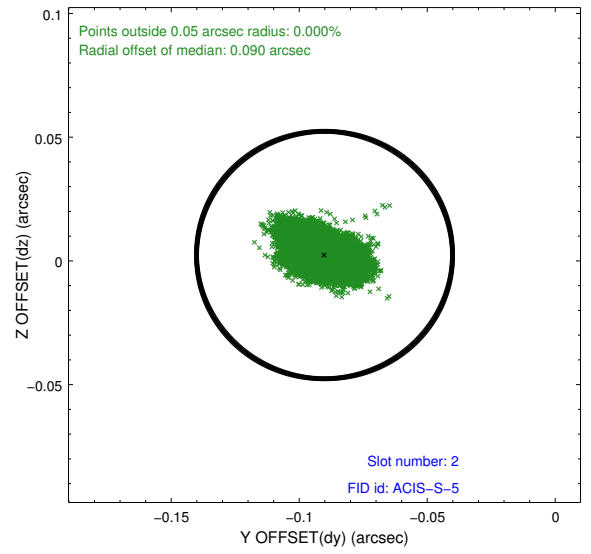
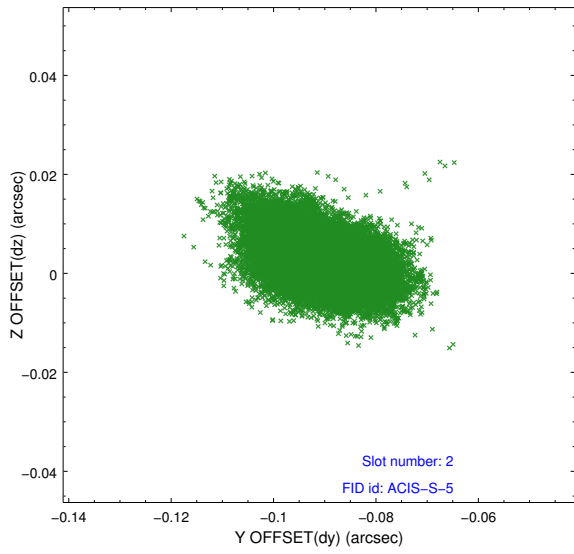
2.5.1 Slot 0



2.5.2 Slot 1



2.5.3 Slot 2

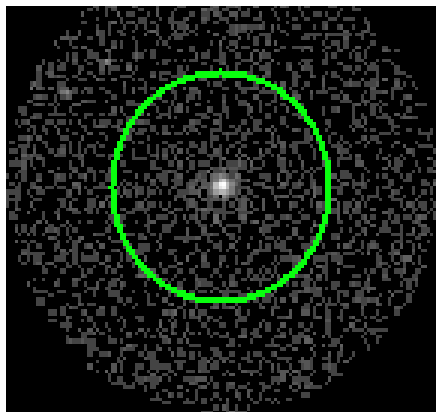


3 Gratings

3.1 HEG Arm



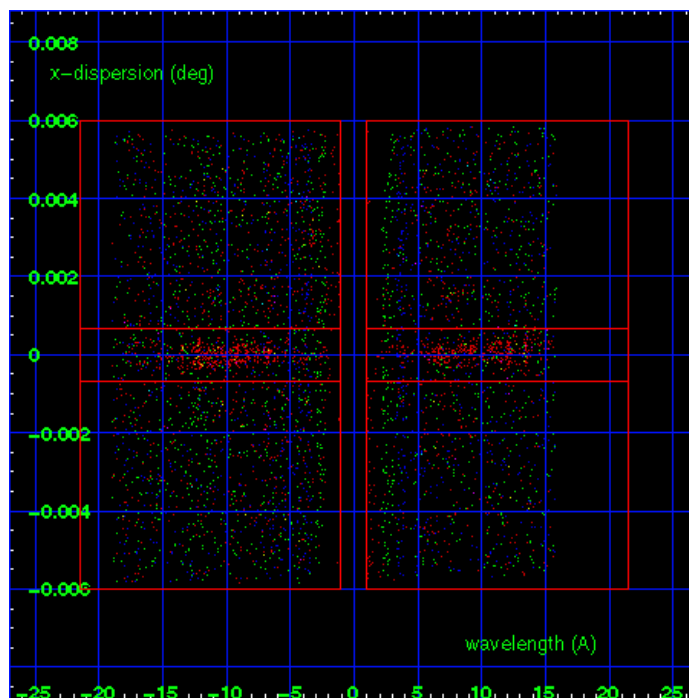
HEG Order Sort 123



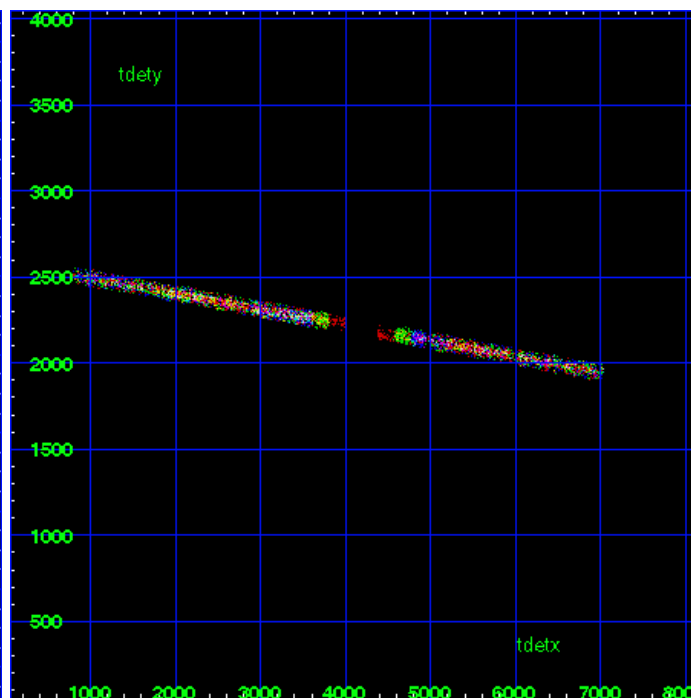
HEG Zero Order



HEG Order Sort ALL

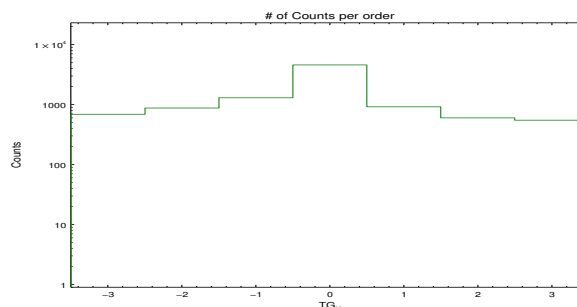


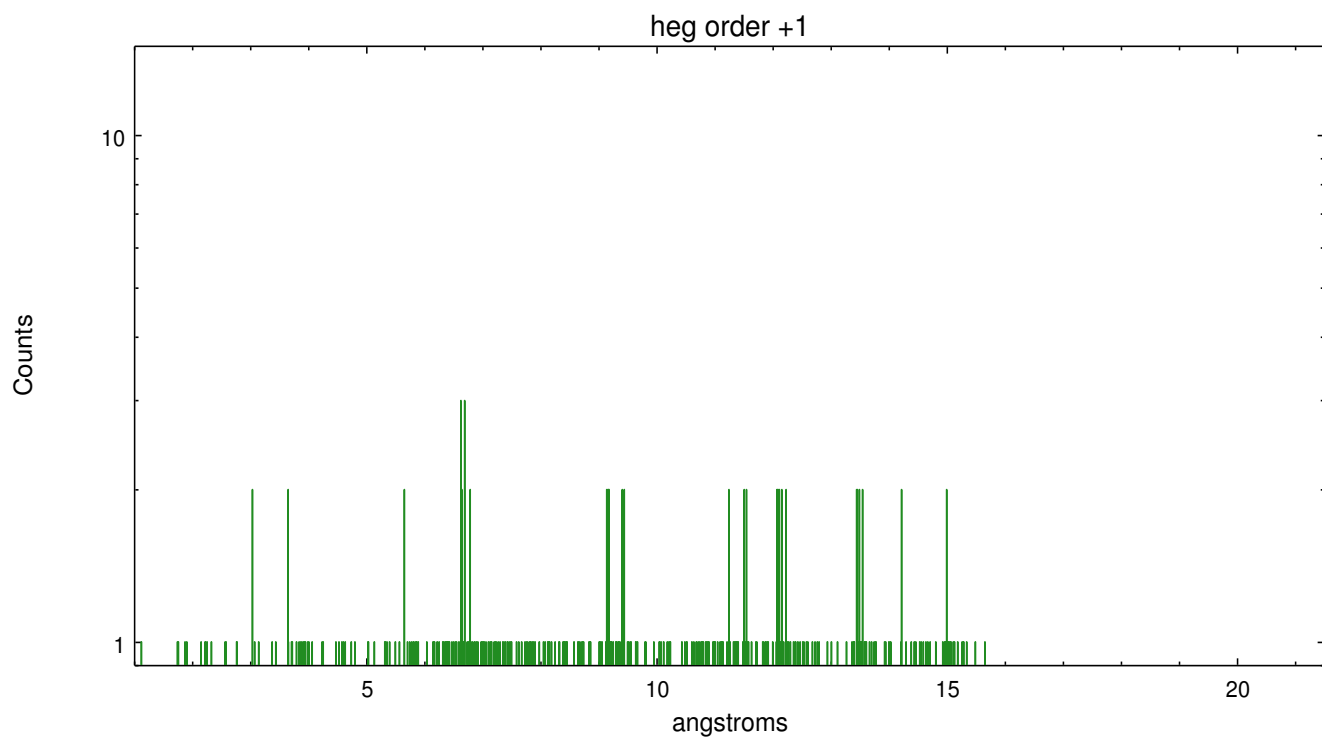
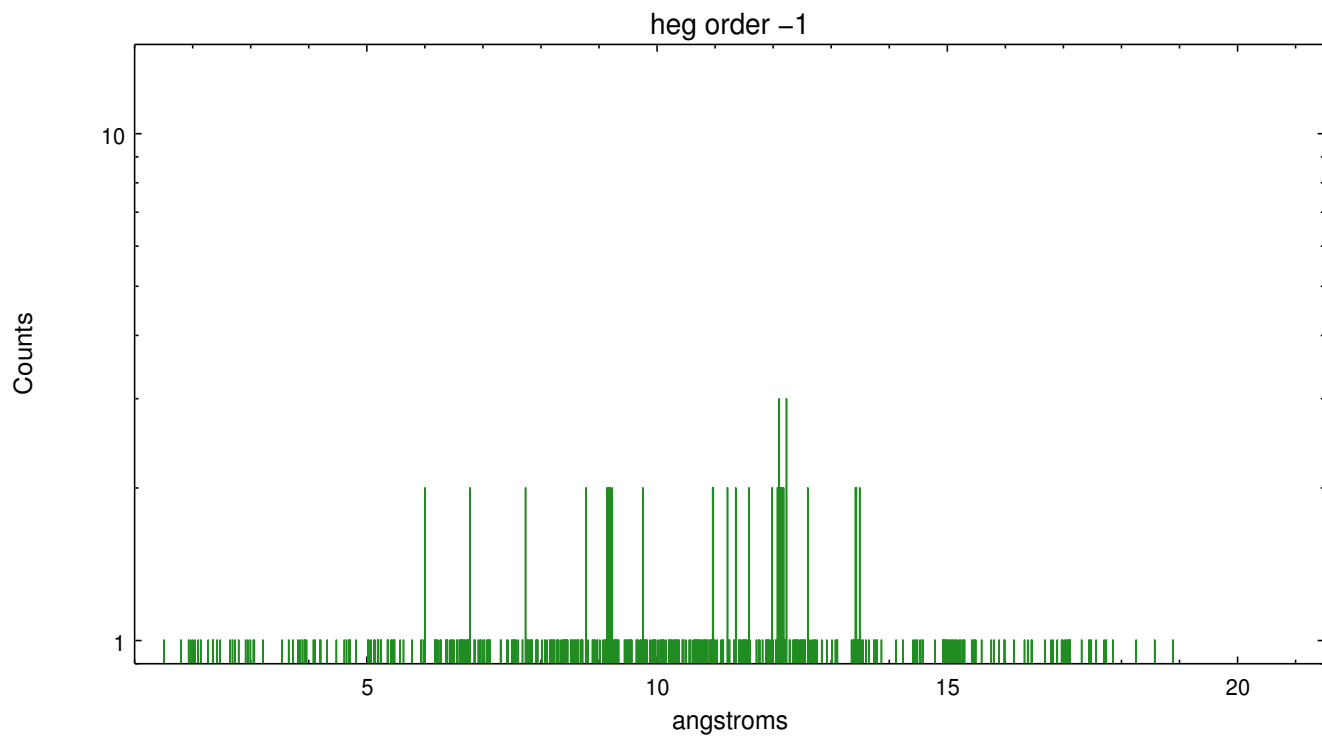
Spot Image HEG



Full Detector HEG

	order -3	order -2	order -1	order 0	order 1	order 2	order 3
Events	690	879	1303	4612	921	602	550

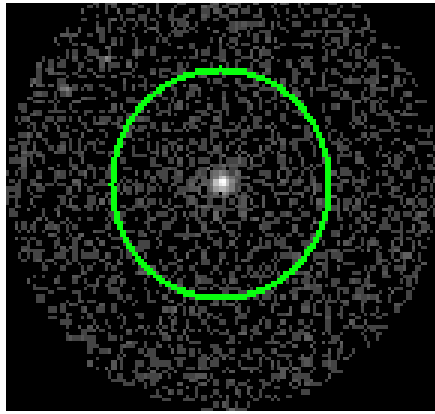




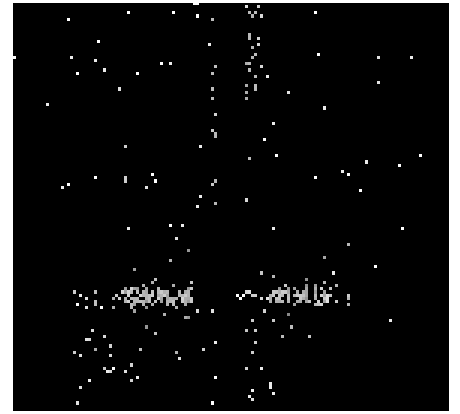
3.2 MEG Arm



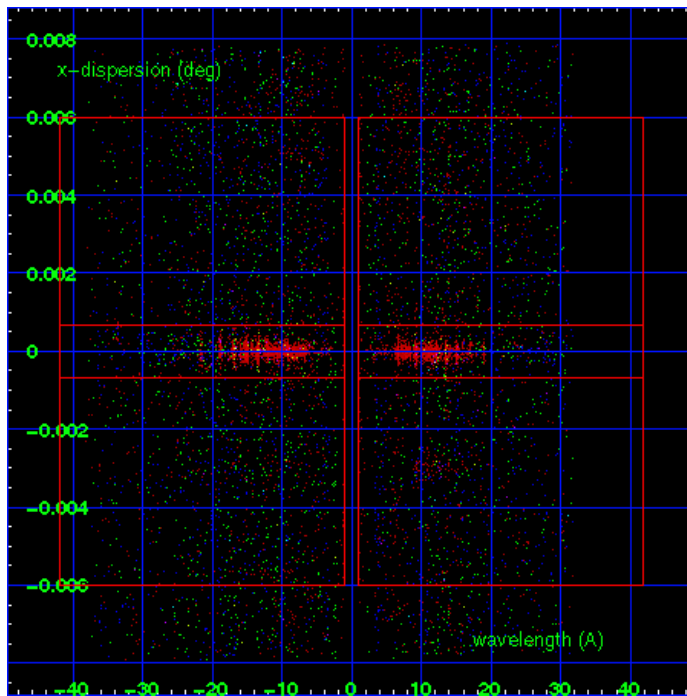
MEG Order Sort 123



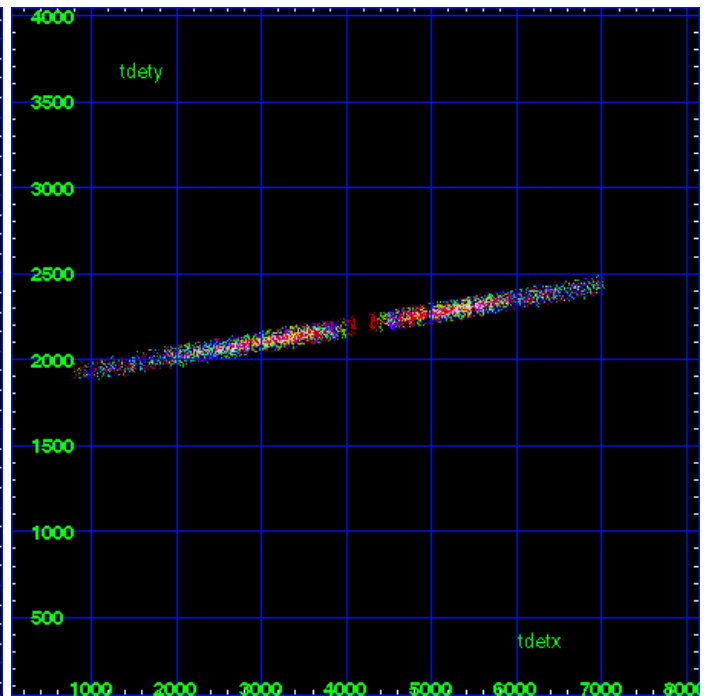
MEG Zero Order



MEG Order Sort ALL

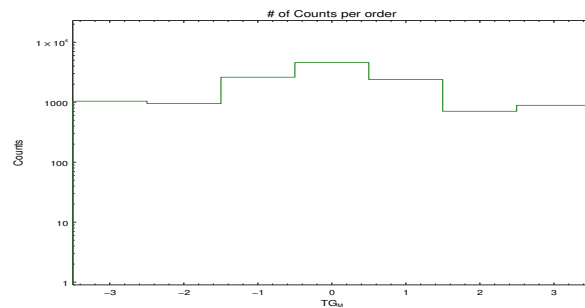


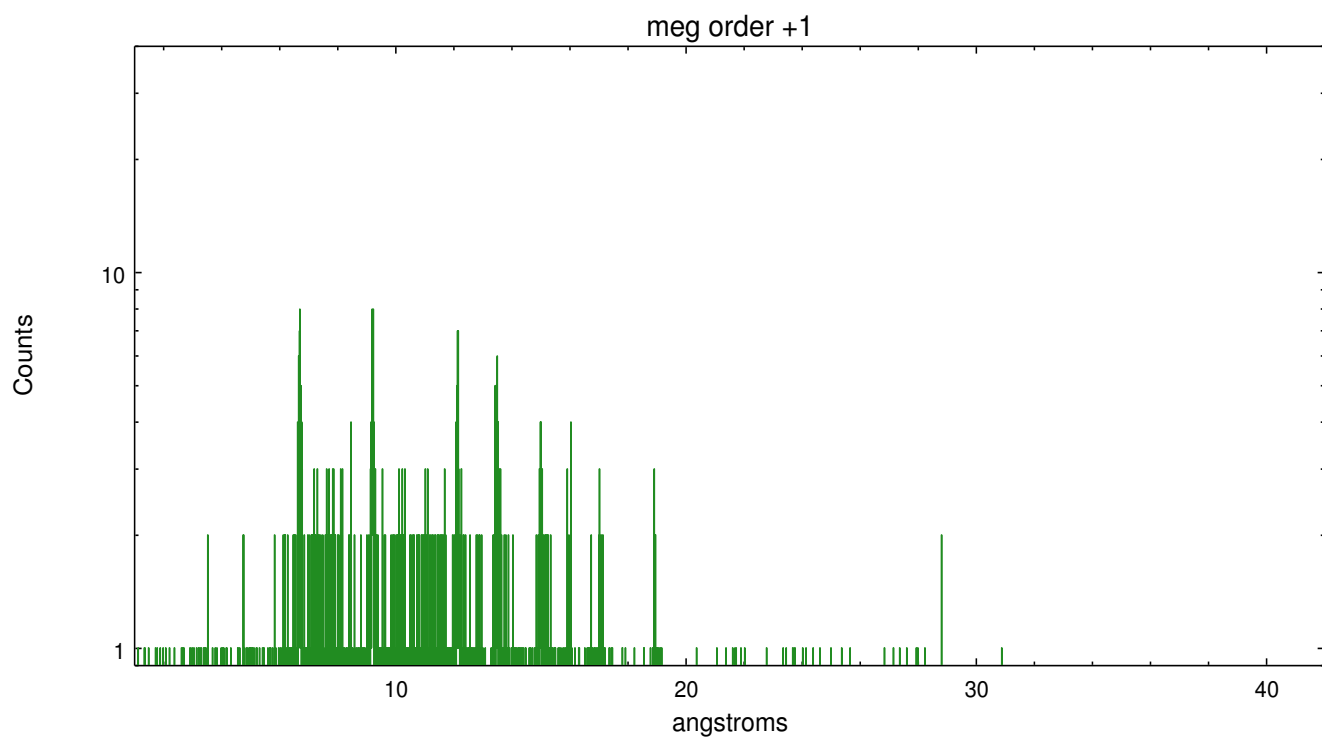
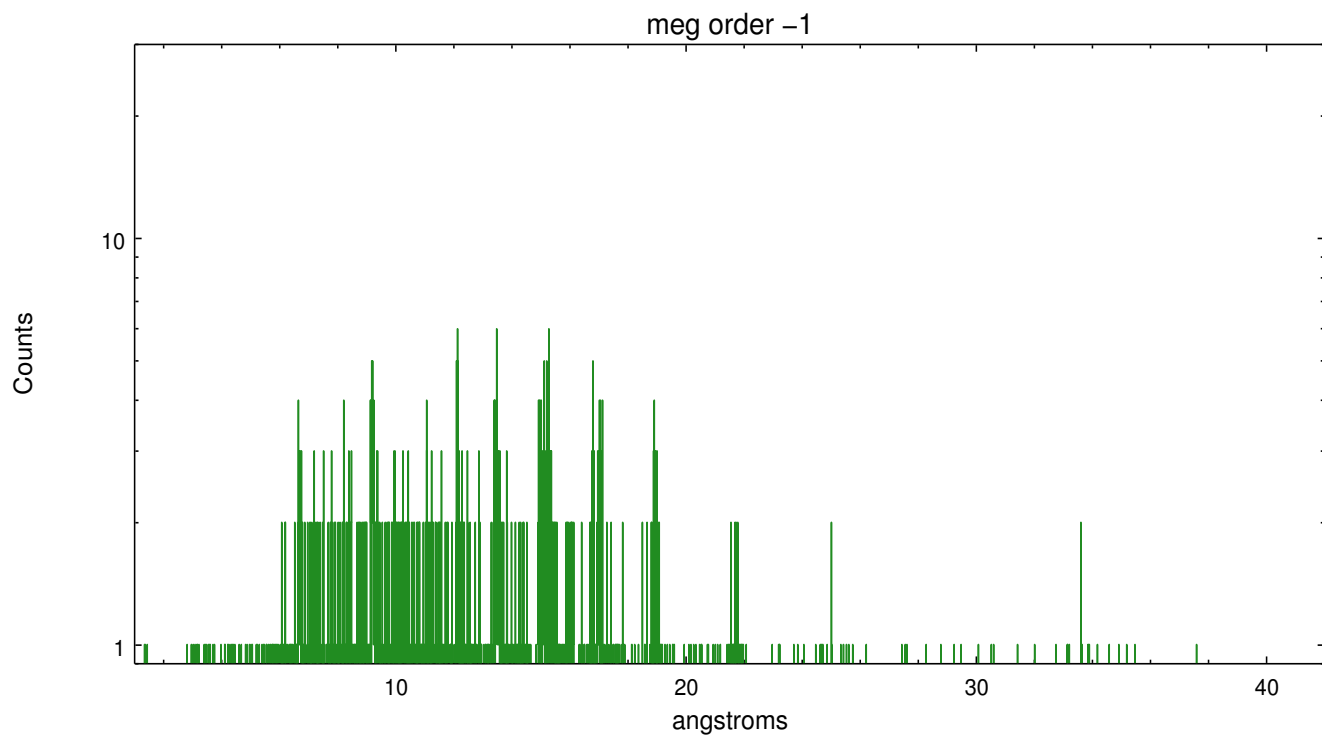
Spot Image MEG



Full Detector MEG

	order -3	order -2	order -1	order 0	order 1	order 2	order 3
Events	1043	951	2621	4612	2395	708	890





A Summary

A.1 Status

V&V Scientist	Joy Nichols
V&V Date (YYYY-MM-DD)	2013.01.15
V&V Edition	1
V&V Disposition and Status	OK
V&V Charge Time	102.5246

A.2 Comments

Additional sources (both zeroth order and visible grating spectra. NGC 6530 objects in field. Warning: Multiple sources in the field may cause contamination of the primary extraction at some wavelengths.