

V&V Reference Report

L2 ASCDS Version : 8.5.1

Observation 5428 - L2 Version 3
Chandra X-Ray Center

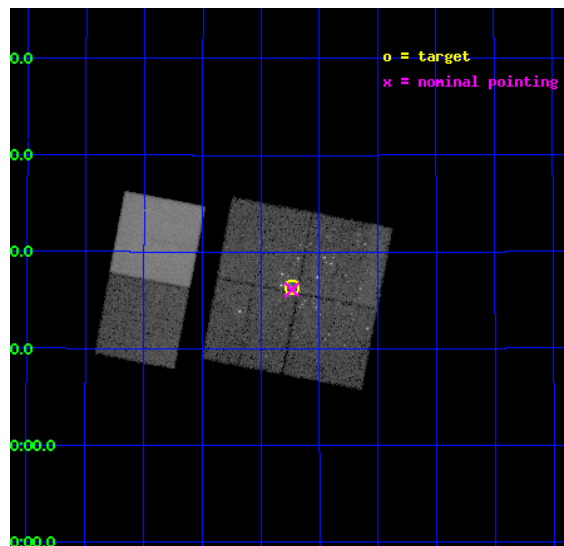
L2 Processing Date : Dec 18 2012

Contents

1	Front	2
2	OBI	3
2.1	OBI	3
2.1.1	Images	3
2.1.2	Bias	3
2.1.3	Parameters	4
2.1.4	Events	4
2.2	Compared Parameters	5
2.3	Aspect	6
2.4	Star Slots	9
2.4.1	Slot 3	9
2.4.2	Slot 4	10
2.4.3	Slot 5	11
2.4.4	Slot 6	12
2.4.5	Slot 7	13
2.5	FID Slots	14
2.5.1	Slot 0	14
2.5.2	Slot 1	15
2.5.3	Slot 2	16
A	Summary	17
A.1	Status	17
A.2	Comments	17

1 Front

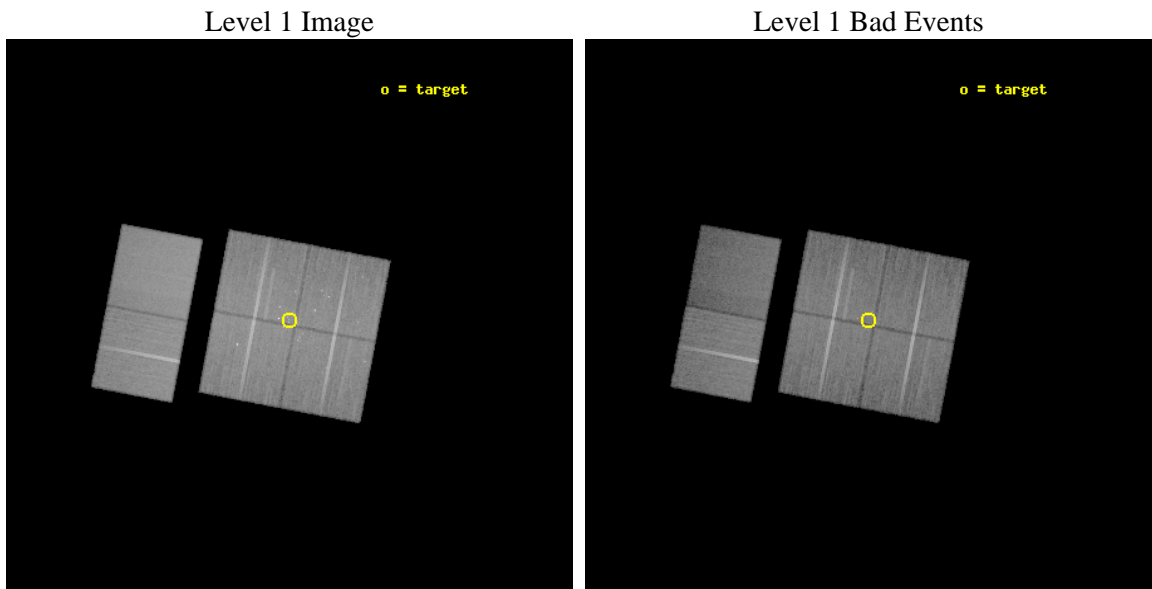
seq_num	200361	Sequence number
obs_id	5428	Observation id
title	Multi-Wavelength Signatures of Magnetic Activity in the Star-Forming Region around LkHa101	Proposal title
observer	Dr. Scott Wolk	Principal investigator
object	LkHa101 cluster	Source name
dtcycle	0	
cycle	P	events from which exps? Prim/Second/Both
ra_targ	67.56	Observer's specified target RA [deg]
dec_targ	35.272833	Observer's specified target Dec [deg]
ra_nom	67.558815698932	Nominal RA [deg]
dec_nom	35.268290779807	Nominal Dec [deg]
roll_nom	280.77279454233	Nominal Roll [deg]
revision	3	Processing version of data
ontime	40147.117860019	Sum of GTIs [s]
livetime	39638.750879984	Livetime [s]
ontime0	40150.358880132	Sum of GTIs [s]
ontime1	40140.635959268	Sum of GTIs [s]
ontime2	40150.358880132	Sum of GTIs [s]
ontime3	40147.117860019	Sum of GTIs [s]
ontime6	40150.35899964	Sum of GTIs [s]
ontime7	40153.599850416	Sum of GTIs [s]
l2events	236362	Number of level 2 events



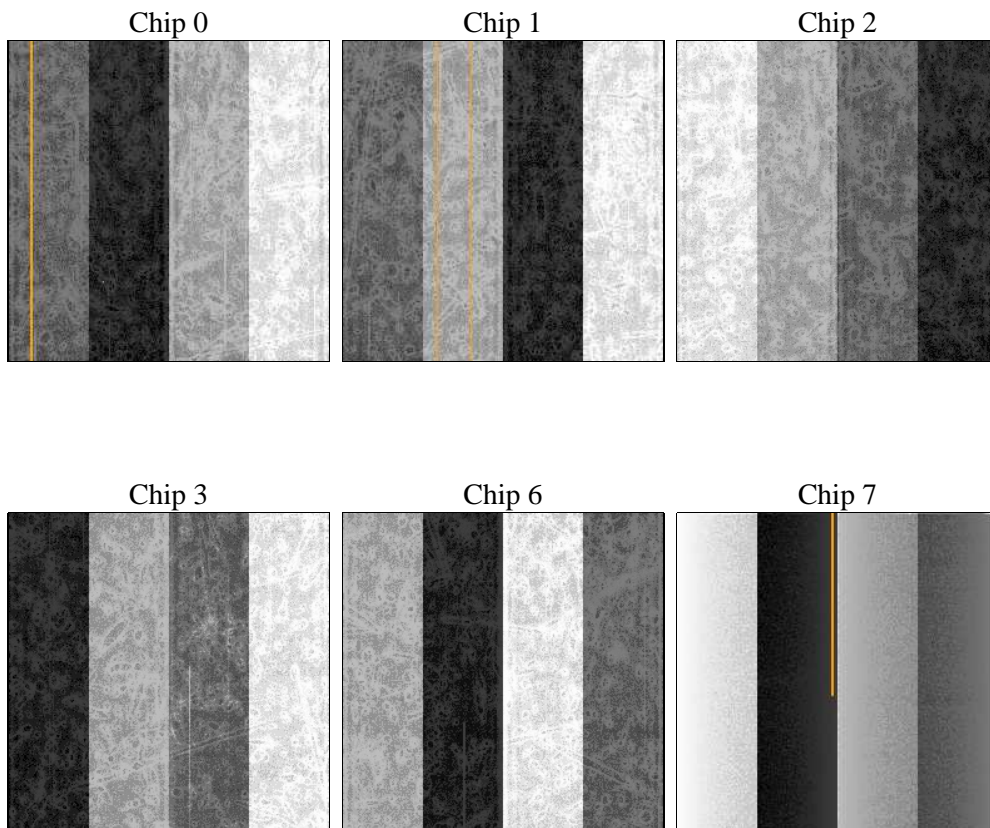
2 OBI

2.1 OBI

2.1.1 Images



2.1.2 Bias



2.1.3 Parameters

obi_num	0	Obi number	sched_exp_time	40000.000000	[s] Scheduled observation exposure time
ascdsver	8.5.1	Processing system revision	ontime	40147.117860019	Sum of GTIs [s]
caldbver	4.5.5	 	ontime0	40150.358880132	Sum of GTIs [s]
date	2012-12-18T08:51:03	Date and time of file creation	ontime1	40140.635959268	Sum of GTIs [s]
revision	3	Processing version of data	ontime2	40150.358880132	Sum of GTIs [s]
			ontime3	40147.117860019	Sum of GTIs [s]
			ontime6	40150.35899964	Sum of GTIs [s]
			ontime7	40153.599850416	Sum of GTIs [s]
			l1events	1496716	Number of level 1 events

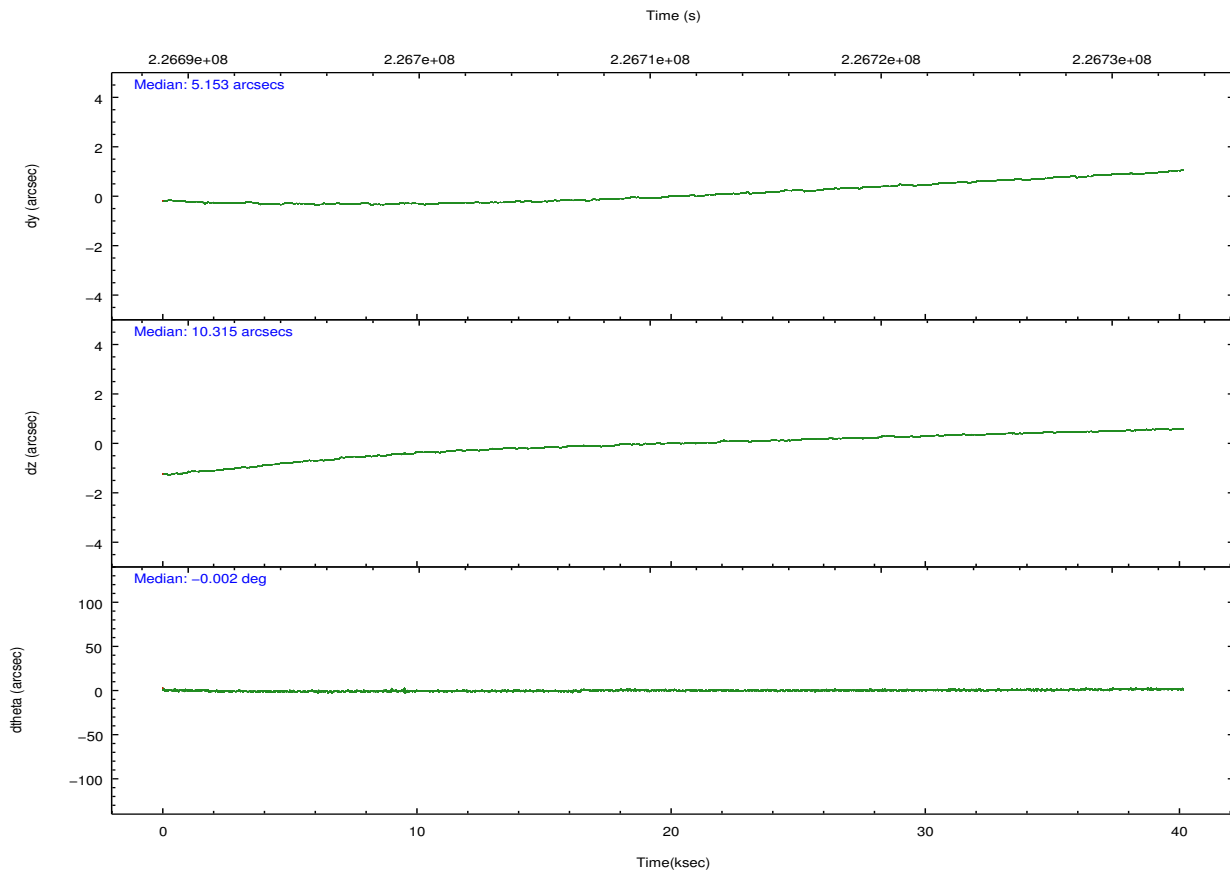
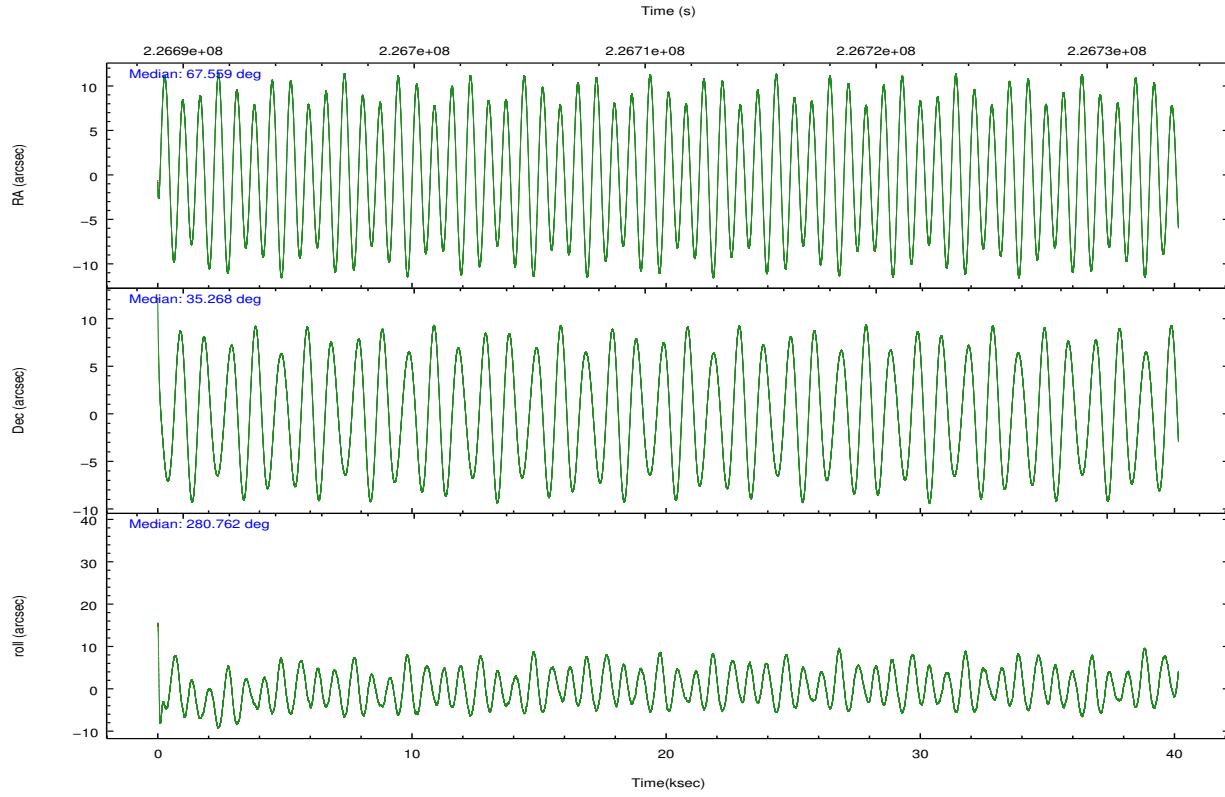
2.1.4 Events

	ccd 0	ccd 1	ccd 2	ccd 3	ccd 6	ccd 7		ccd 0	ccd 1	ccd 2	ccd 3	ccd 6	ccd 7
level 1 events	226461	233210	255085	249151	260012	272797	grade 0 events	9870	13314	10509	13144	8267	10448
rejected events	200336	201720	228546	219569	235068	149899		4%	5%	4%	5%	3%	3%
rejected %	88%	86%	89%	88%	90%	54%	grade 1 events	134	151	161	260	118	235
								0%	0%	0%	0%	0%	0%
							grade 2 events	5933	6340	5966	5795	5561	24919
								2%	2%	2%	2%	2%	9%
							grade 3 events	2910	3119	2795	2939	2842	11624
								1%	1%	1%	1%	1%	4%
							grade 4 events	2705	3240	2799	2890	2888	11706
								1%	1%	1%	1%	1%	4%
							grade 5 events	8659	9362	8117	9912	10237	29242
								3%	4%	3%	3%	3%	10%
							grade 6 events	4837	5636	4579	4945	5516	64824
								2%	2%	1%	1%	2%	23%
							grade 7 events	191413	192048	220159	209266	224583	119799
								84%	82%	86%	83%	86%	43%

2.2 Compared Parameters

Parameter	Planned	Actual	Parameter	Planned	Actual
Instrument	ACIS	ACIS	Obspar format version number	7	7
Detector	ACIS-012367	ACIS-012367	Obspar file type	PREDICTED	ACTUAL
Grating	NONE	NONE	Obspar update status	NONE	UPDATED
Data mode	VFAINT	VFAINT	Number of optional ACIS chips dropped	0	0
Observation mode	POINTING	POINTING	On-chip summing requested	N	N
[deg] Pointing RA	67.536791	67.55881569893161	Subarray requested	NONE	NONE
[deg] Pointing Dec	35.288969	35.26829077980661	Alternating exposures requested	N	N
[deg] Pointing Roll	280.576814	280.772794542332	[s] Primary exposure time	0.000000	3.2
[mm] SIM focus pos	-0.782348	-0.7809083437167272			
[mm] SIM defocus	0	0.001439871863259334			
[mm] SIM translation stage pos	-233.592463	-233.5874344608287			
[mm] SIM translation stage offset	0	-0.005018542100998502			
[s] Observation start time (MET)	226691071.184000	226689913.88505			
Observation start date	2005-03-08T17:43:27	2005-03-08T17:25:13			
[s] Observation end time (MET)	226731071.184000	226732129.02446			
Observation end date	2005-03-09T04:50:07	2005-03-09T05:08:49			
Read mode	TIMED	TIMED			

2.3 Aspect



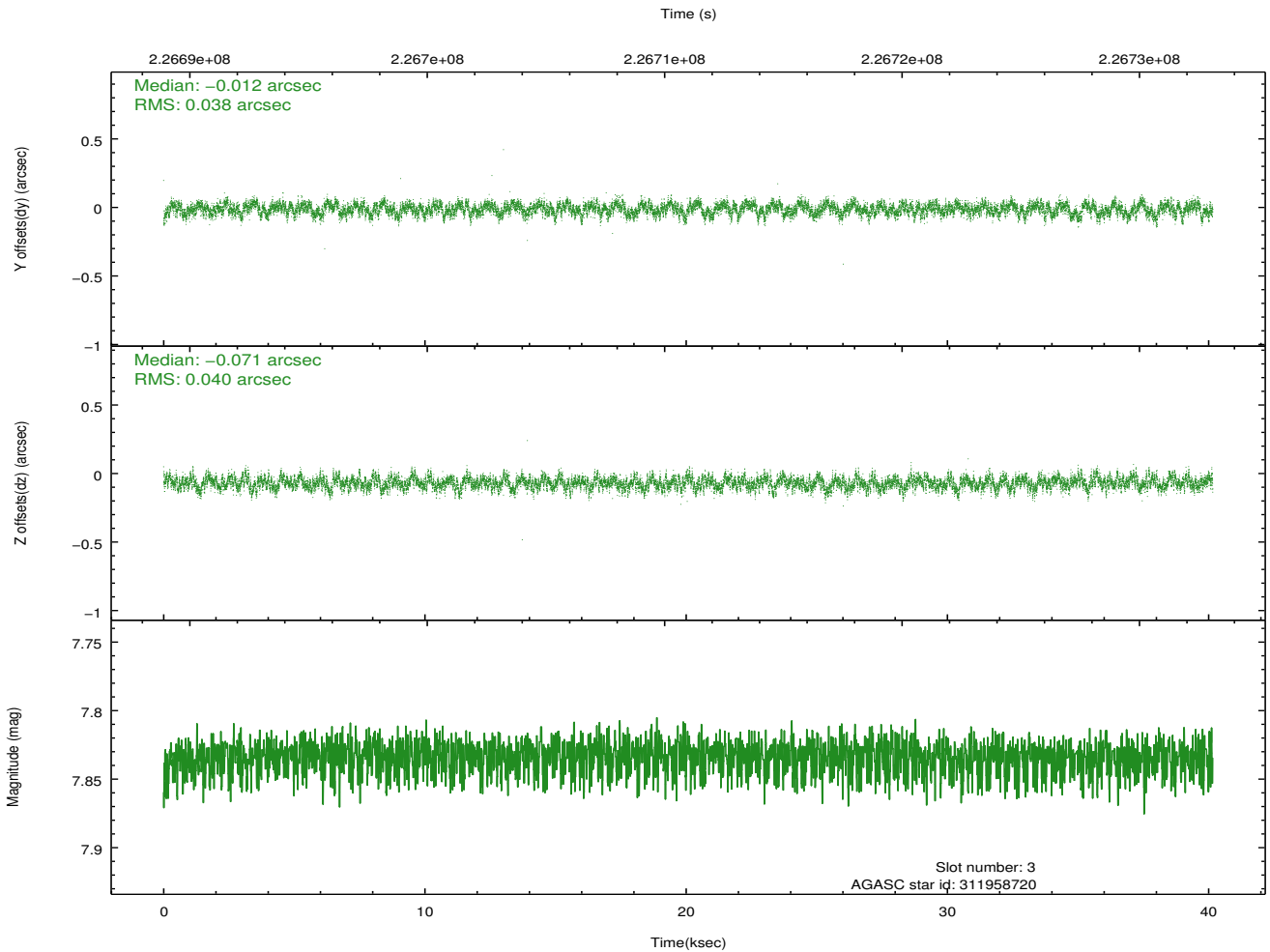
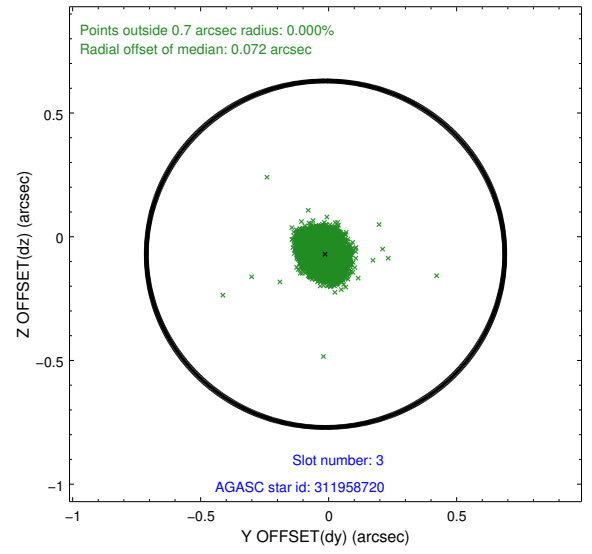
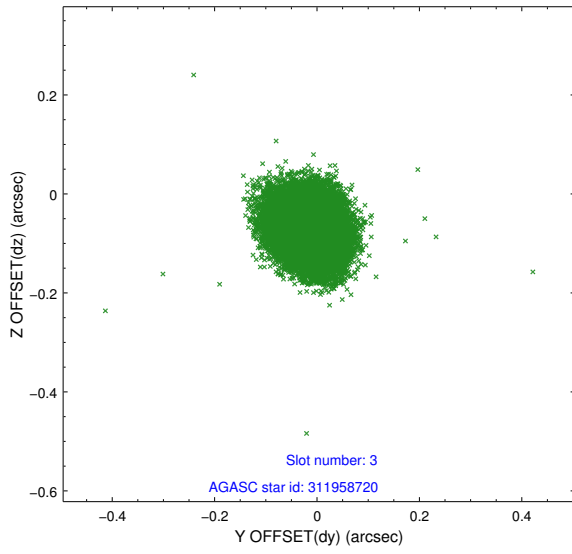
Slot Statistics

slot	status	id	mag	n_pts	med_dy	med_dz	dr1	dr2	ra	dec	mean_y	mean_z
0	FID	ACIS-I-1	7.24	9795	0.003	-0.009	0.025	0.053	0.000000	0.000000	934.45	-833.70
1	FID	ACIS-I-4	7.17	9793	0.080	0.027	0.025	0.046	0.000000	0.000000	2154.58	1066.13
2	FID	ACIS-I-5	7.22	9793	-0.185	0.052	0.020	0.035	0.000000	0.000000	-1813.72	1064.02
3	GUIDE	311958720	7.83	19591	-0.012	-0.071	0.058	0.093	67.019976	35.020500	667.12	-1674.26
4	GUIDE	311963432	9.83	19508	0.018	0.052	0.119	0.191	66.894392	34.792266	1403.99	-2193.79
5	GUIDE	311963616	7.51	19590	-0.003	-0.008	0.058	0.093	67.301368	35.265783	-45.15	-695.31
6	GUIDE	312084320	9.62	19576	0.113	-0.059	0.114	0.195	67.603566	35.117886	642.04	80.43
7	GUIDE	312086640	8.67	19587	-0.116	0.085	0.069	0.114	67.746042	35.599832	-988.74	808.47

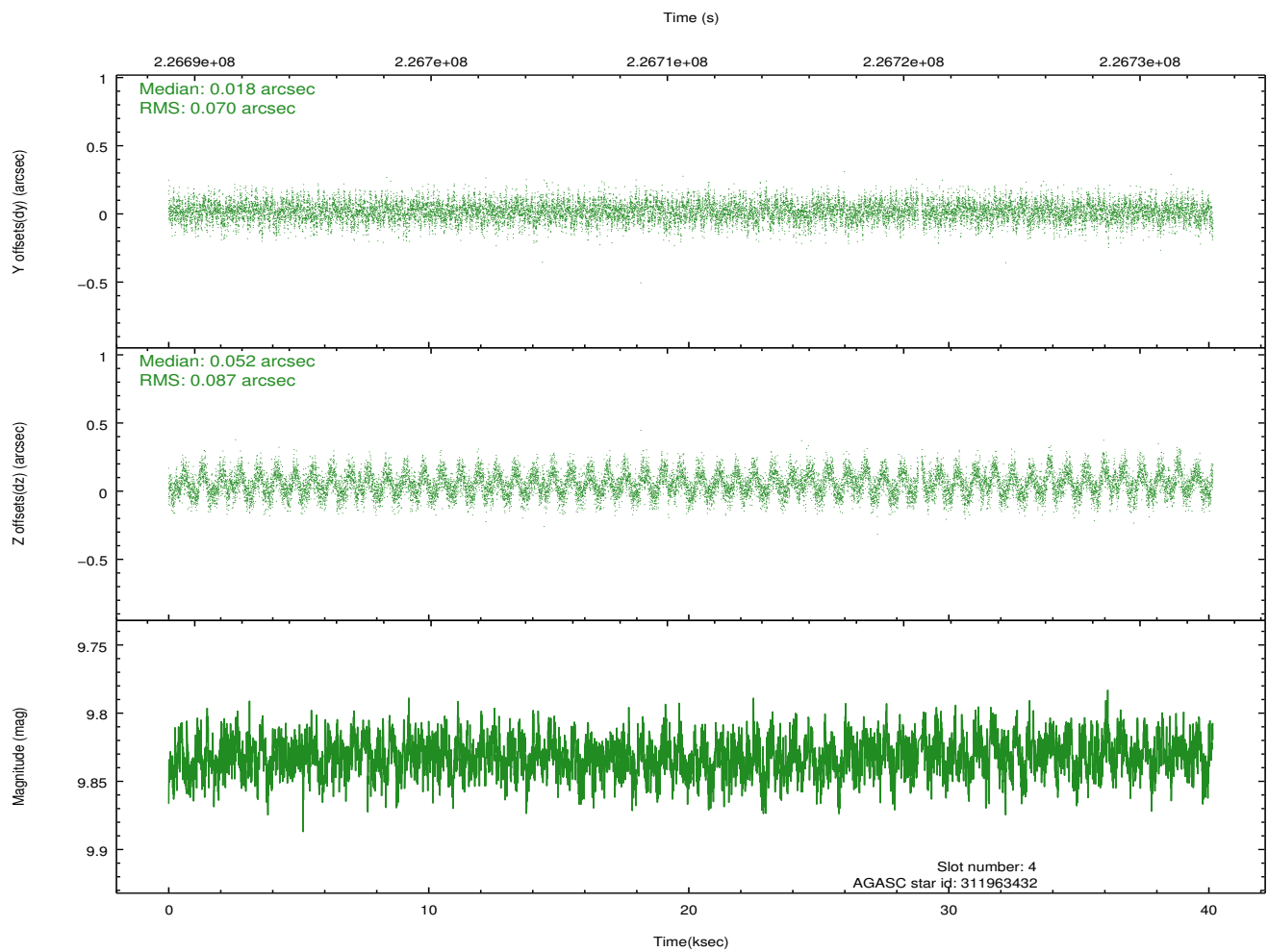
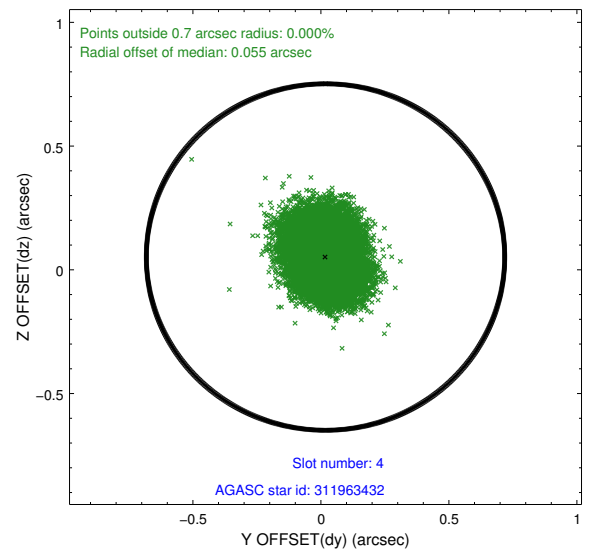
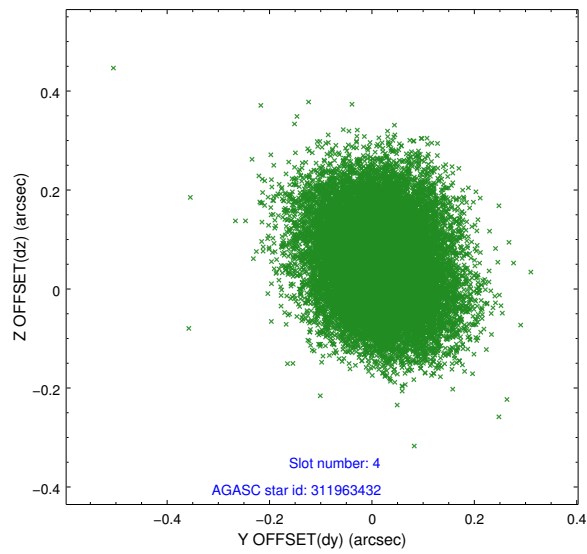
∞

2.4 Star Slots

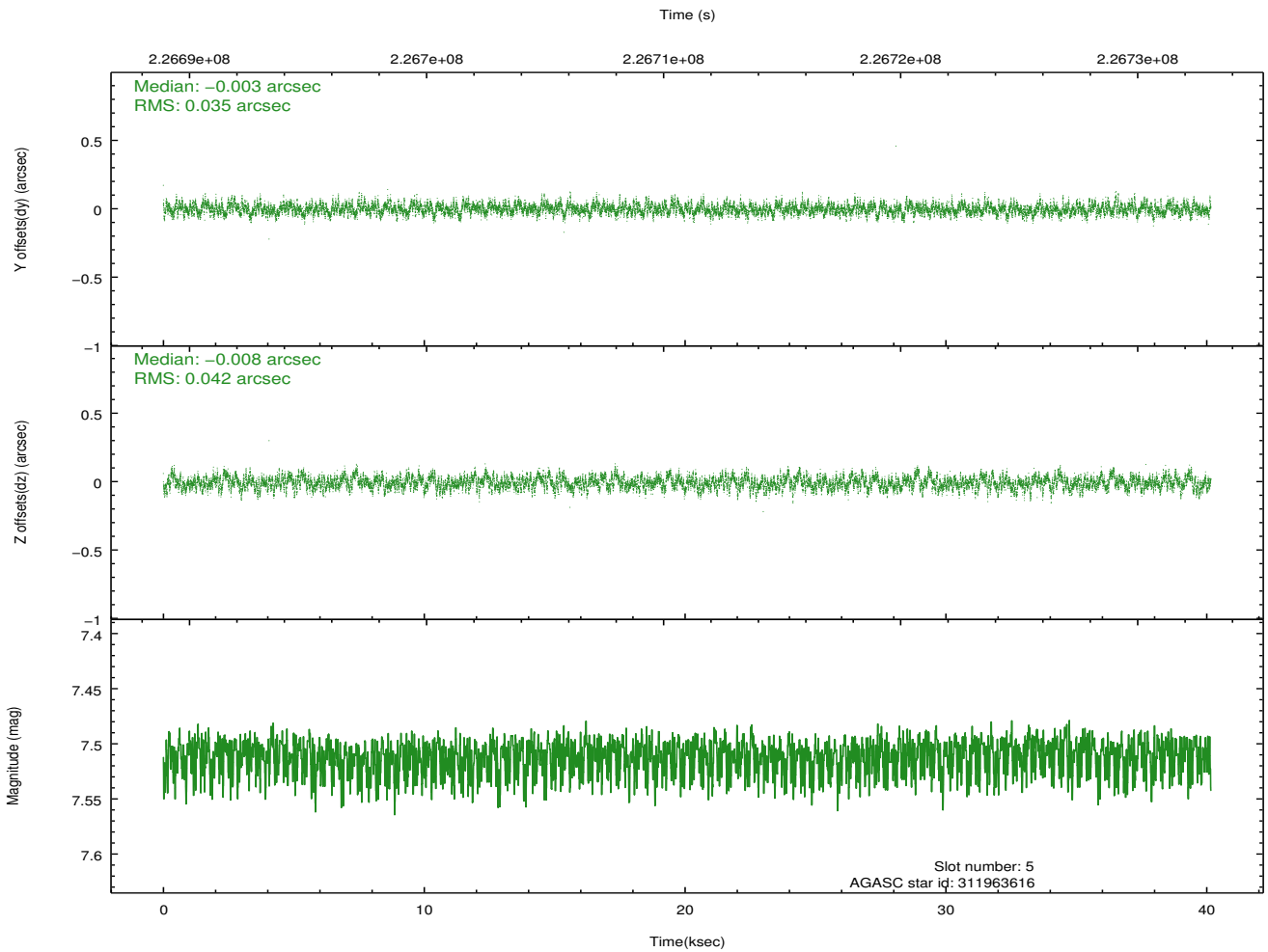
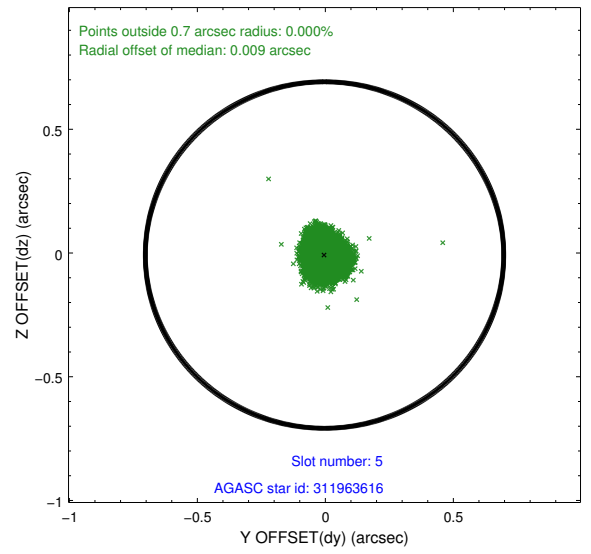
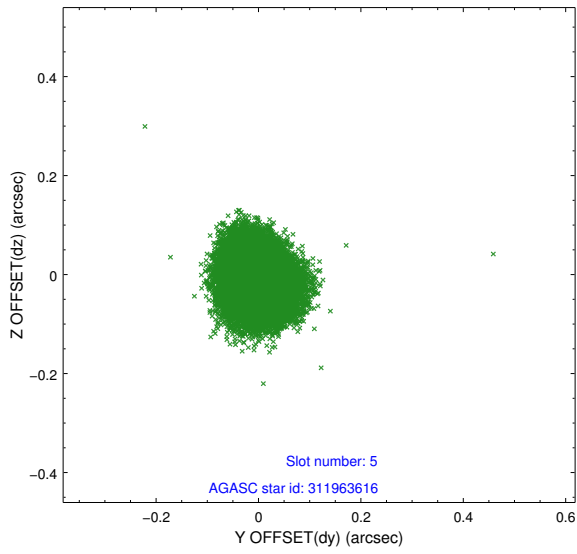
2.4.1 Slot 3



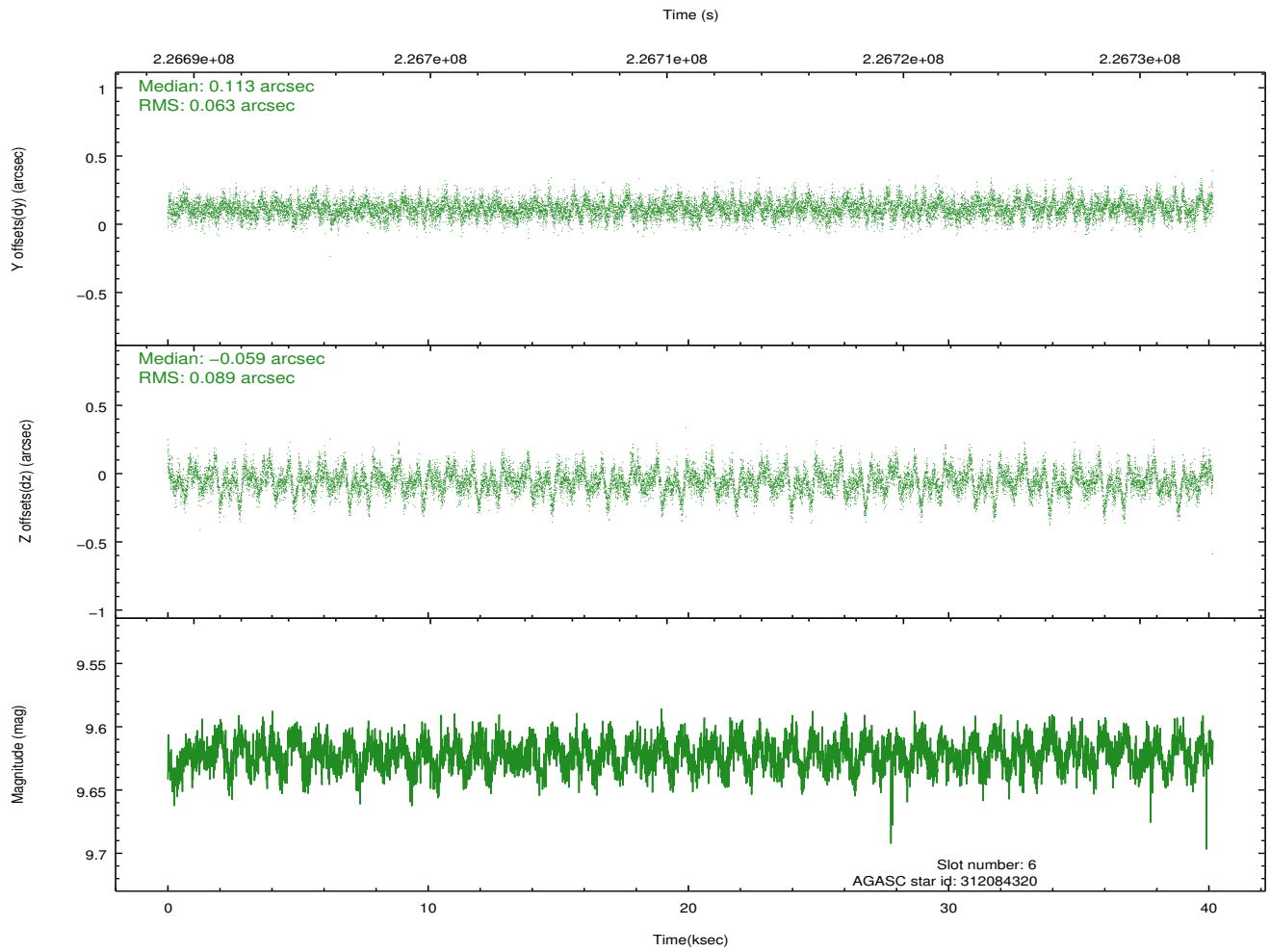
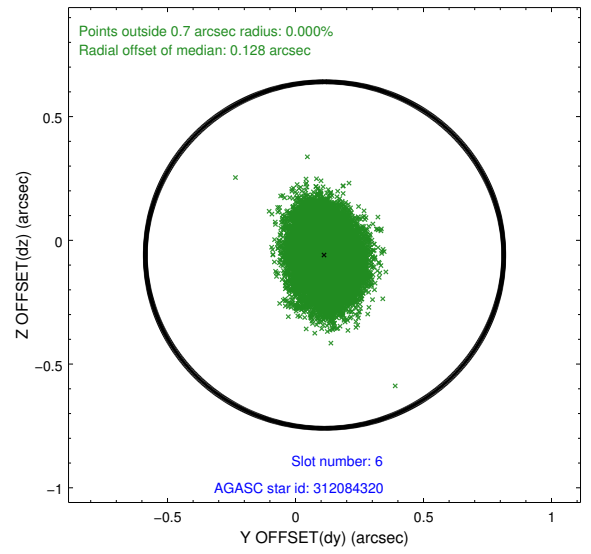
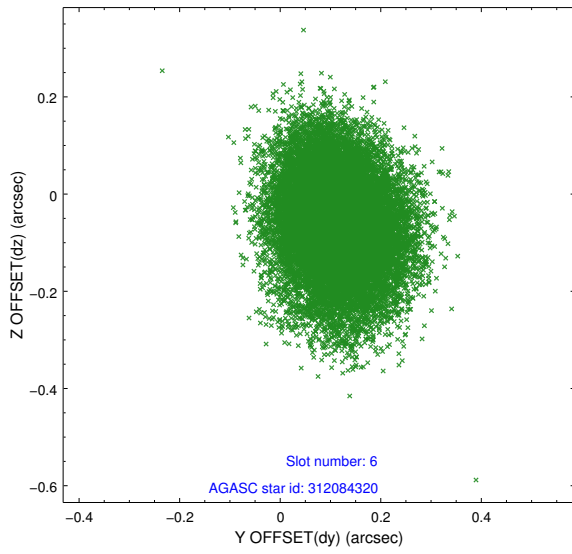
2.4.2 Slot 4



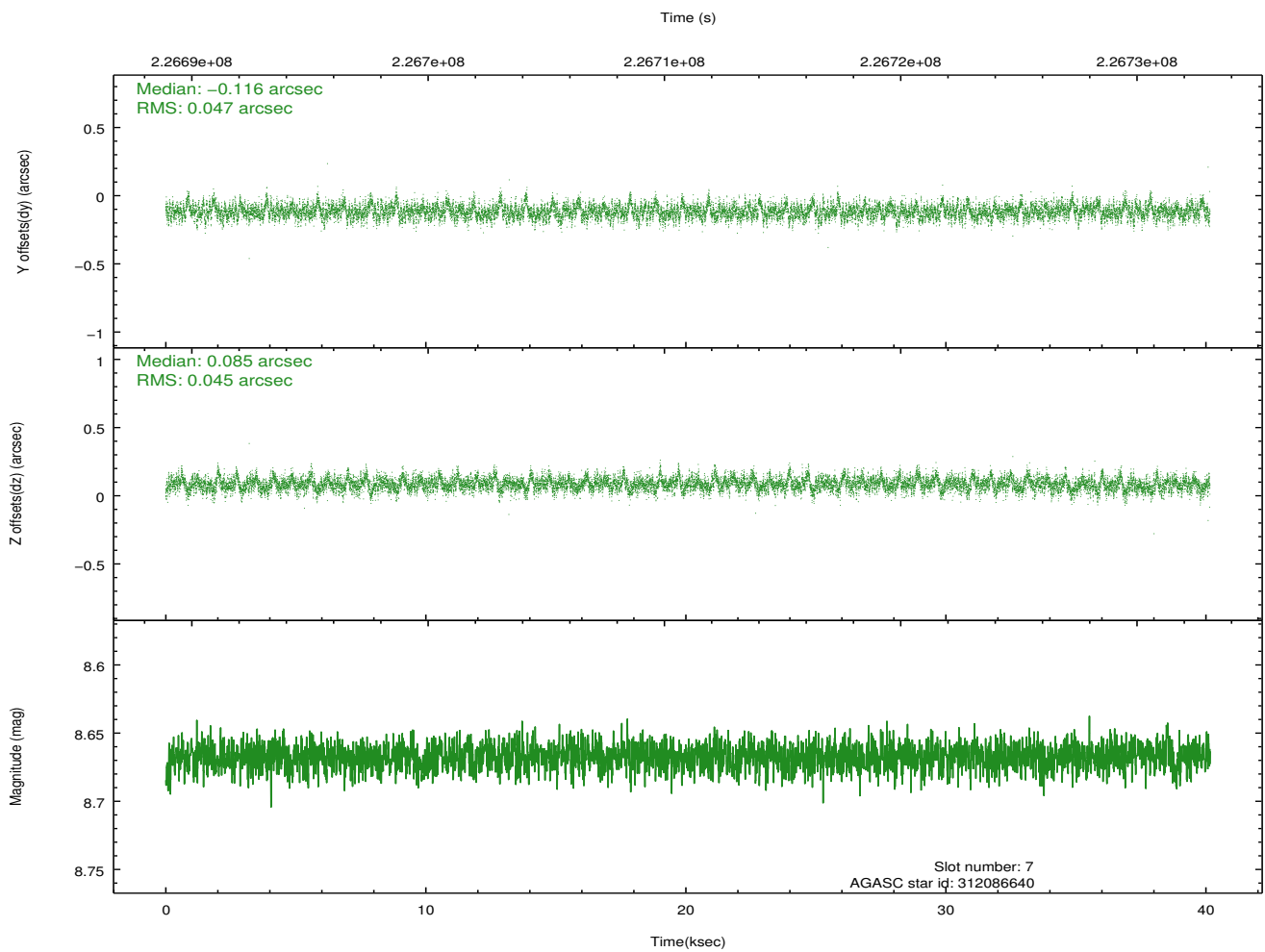
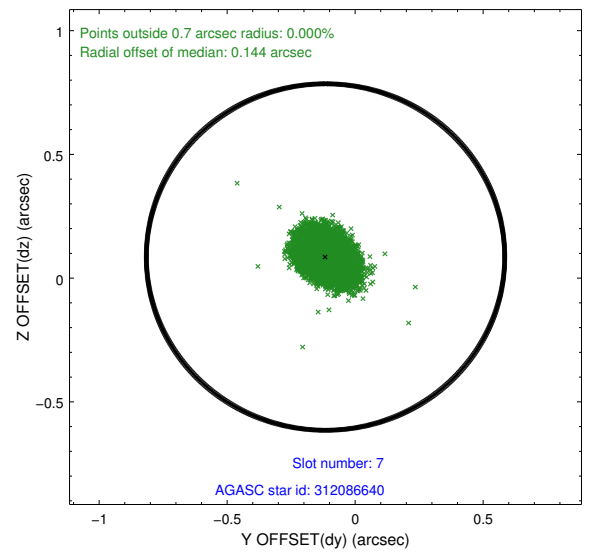
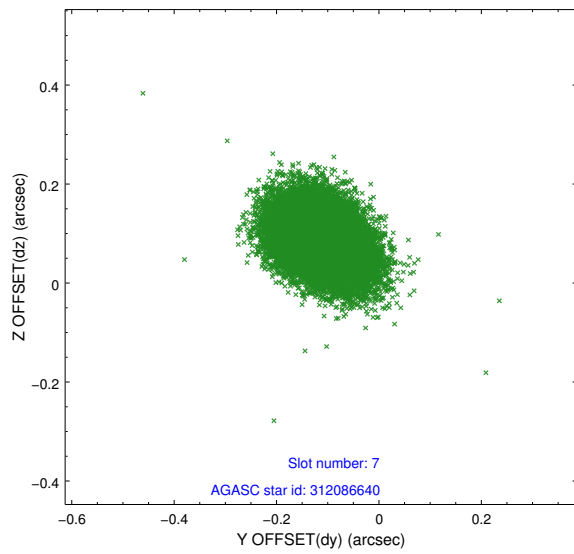
2.4.3 Slot 5



2.4.4 Slot 6

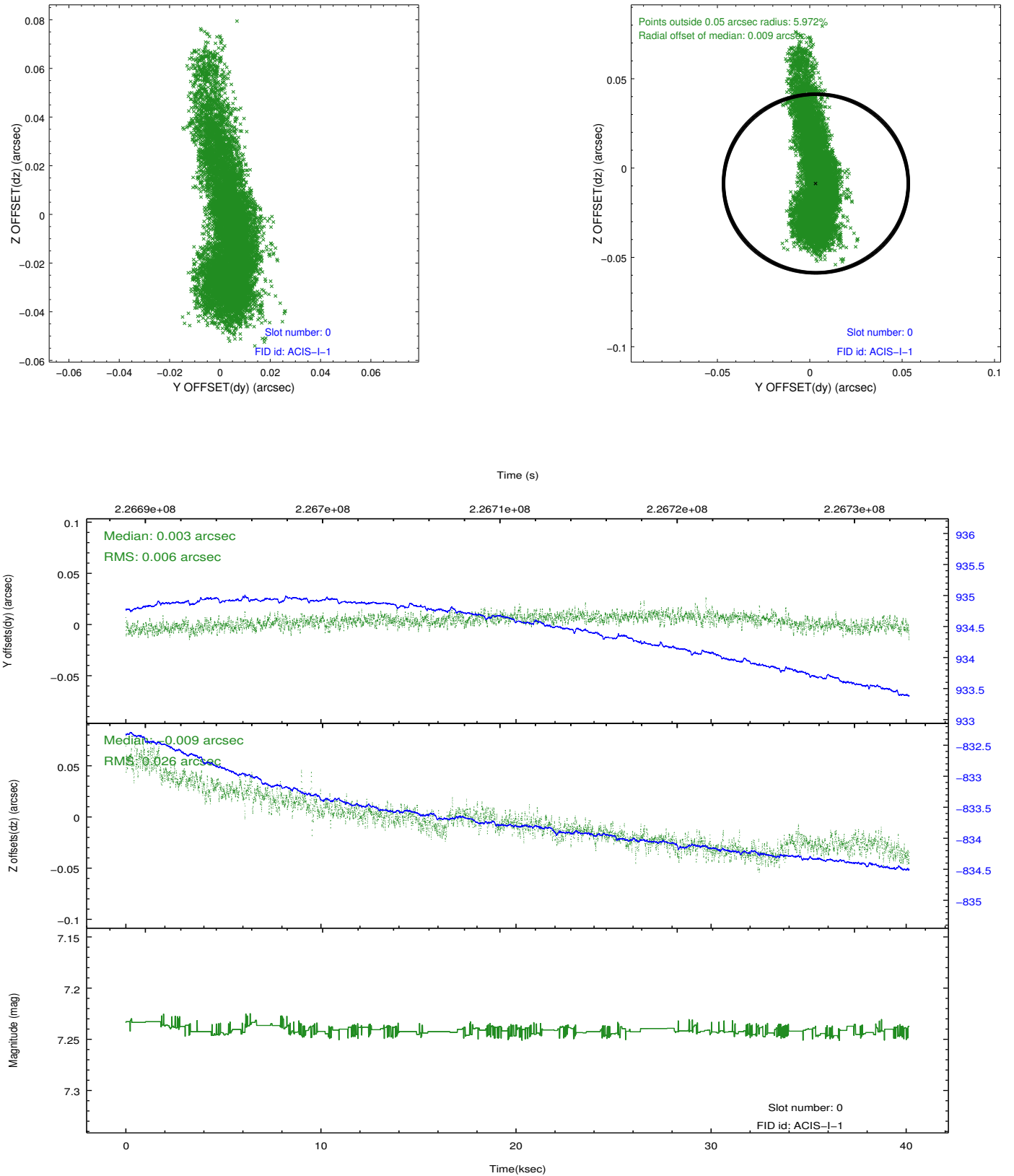


2.4.5 Slot 7

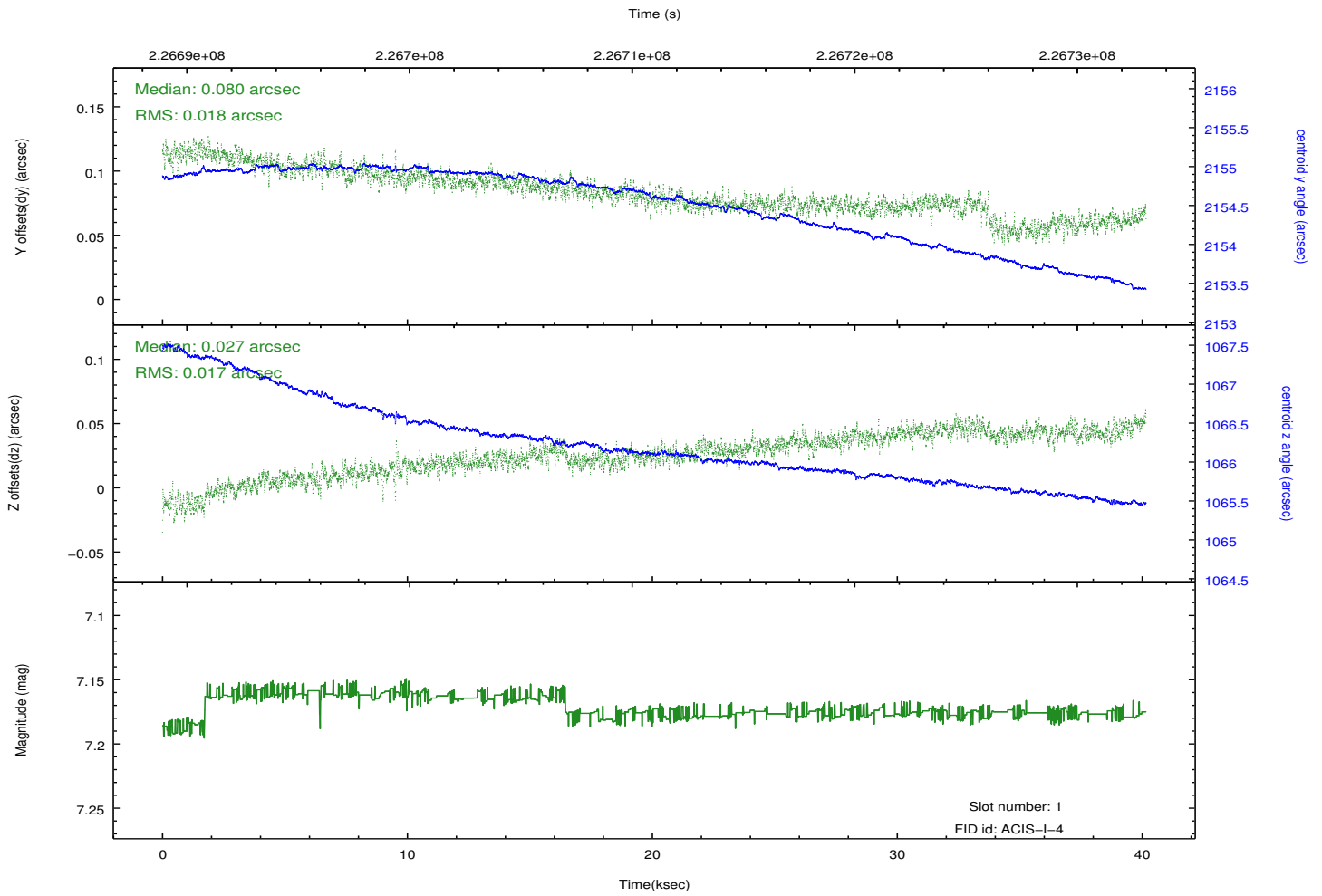
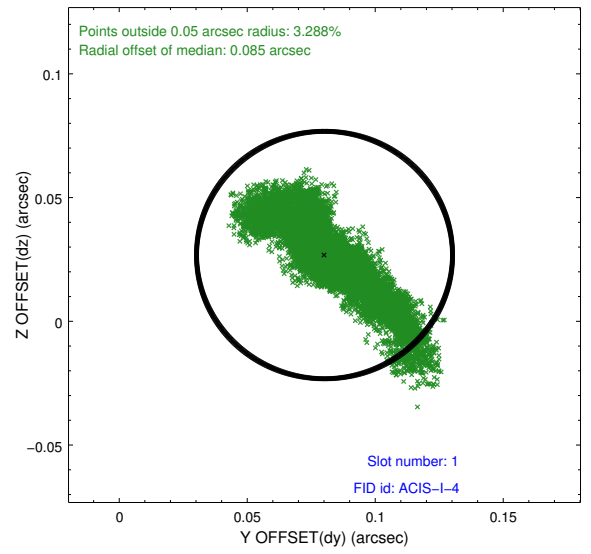
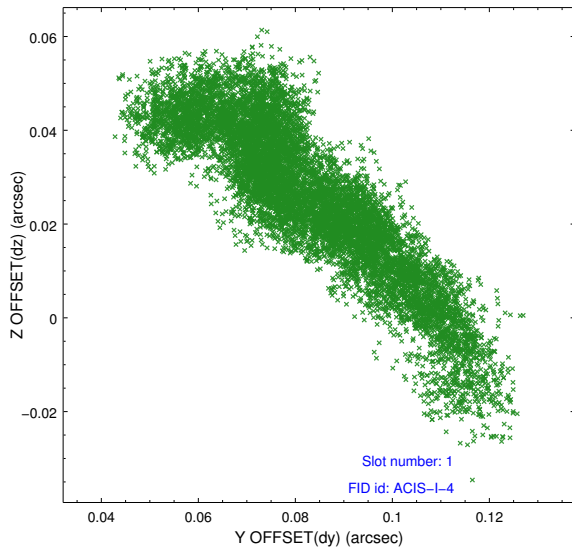


2.5 FID Slots

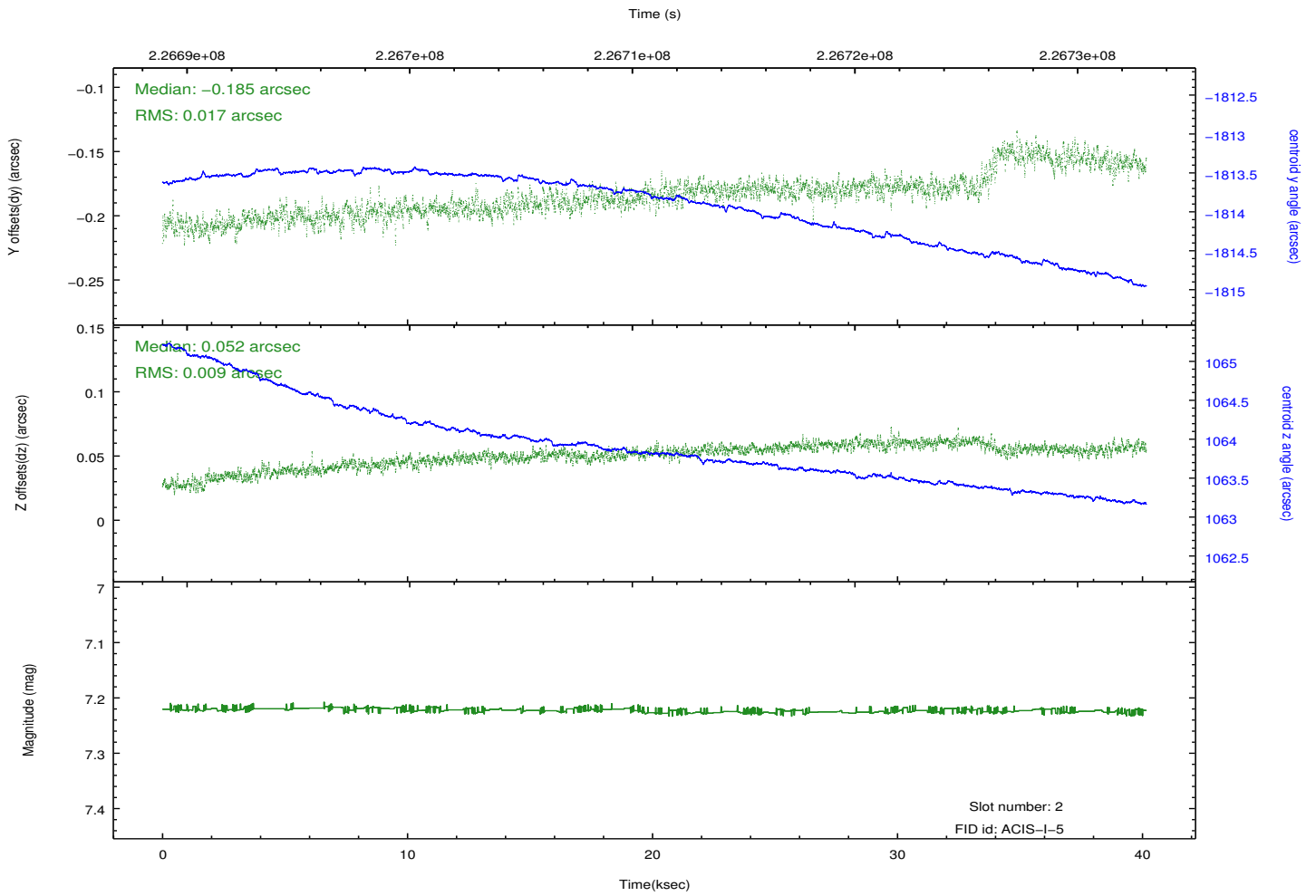
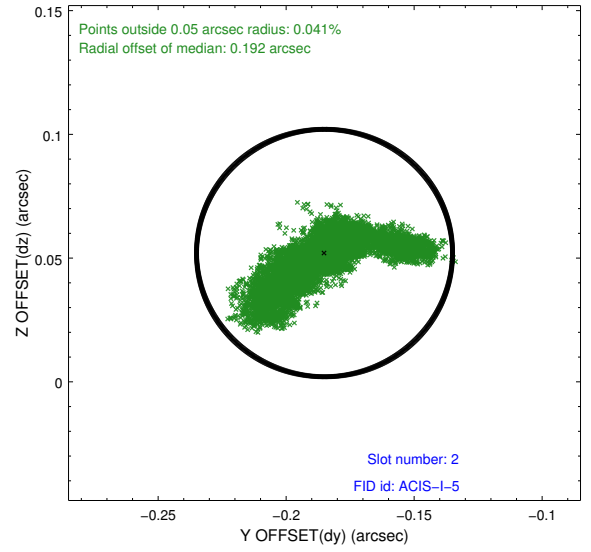
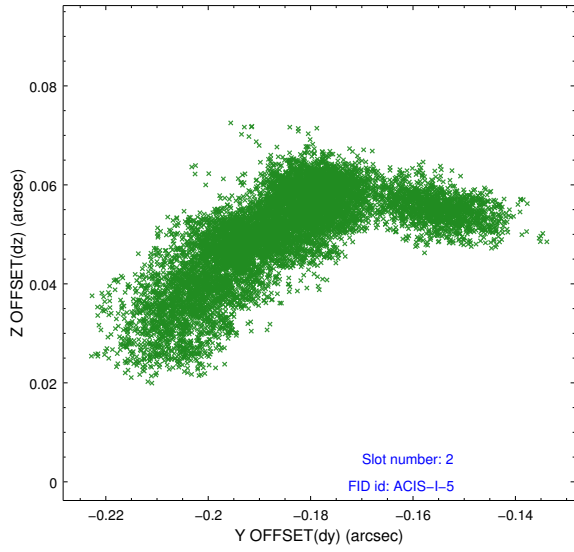
2.5.1 Slot 0



2.5.2 Slot 1



2.5.3 Slot 2



A Summary

A.1 Status

V&V Scientist	Jen Lauer
V&V Date (YYYY-MM-DD)	2013.01.11
V&V Edition	1
V&V Disposition and Status	OK
V&V Charge Time	40.14711

A.2 Comments

Joint Proposal: NRAO