

# V&V Reference Report

## L2 ASCDS Version : 8.5.1

Observation 5798 - L2 Version 3  
Chandra X-Ray Center

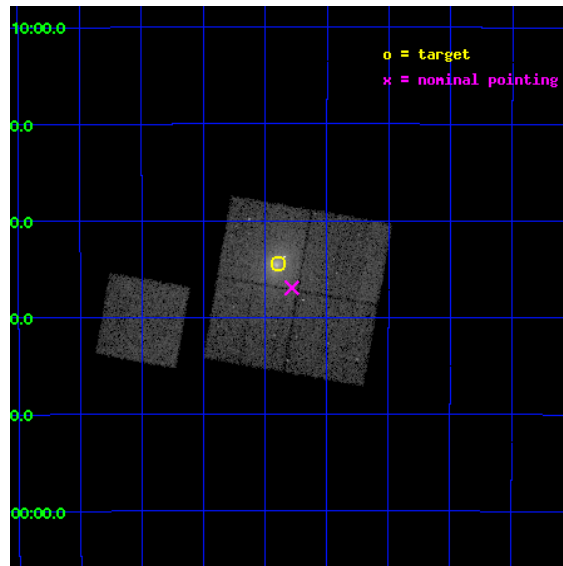
L2 Processing Date : Dec 15 2012

## Contents

<b>1</b>	<b>Front</b>	<b>2</b>
<b>2</b>	<b>OBI</b>	<b>3</b>
2.1	OBI . . . . .	3
2.1.1	Images . . . . .	3
2.1.2	Bias . . . . .	3
2.1.3	Parameters . . . . .	4
2.1.4	Events . . . . .	4
2.2	Compared Parameters . . . . .	5
2.3	Aspect . . . . .	6
2.4	Star Slots . . . . .	9
2.4.1	Slot 3 . . . . .	9
2.4.2	Slot 4 . . . . .	10
2.4.3	Slot 5 . . . . .	11
2.4.4	Slot 6 . . . . .	12
2.4.5	Slot 7 . . . . .	13
2.5	FID Slots . . . . .	14
2.5.1	Slot 0 . . . . .	14
2.5.2	Slot 1 . . . . .	15
2.5.3	Slot 2 . . . . .	16
<b>A</b>	<b>Summary</b>	<b>17</b>
A.1	Status . . . . .	17
A.2	Comments . . . . .	17

# 1 Front

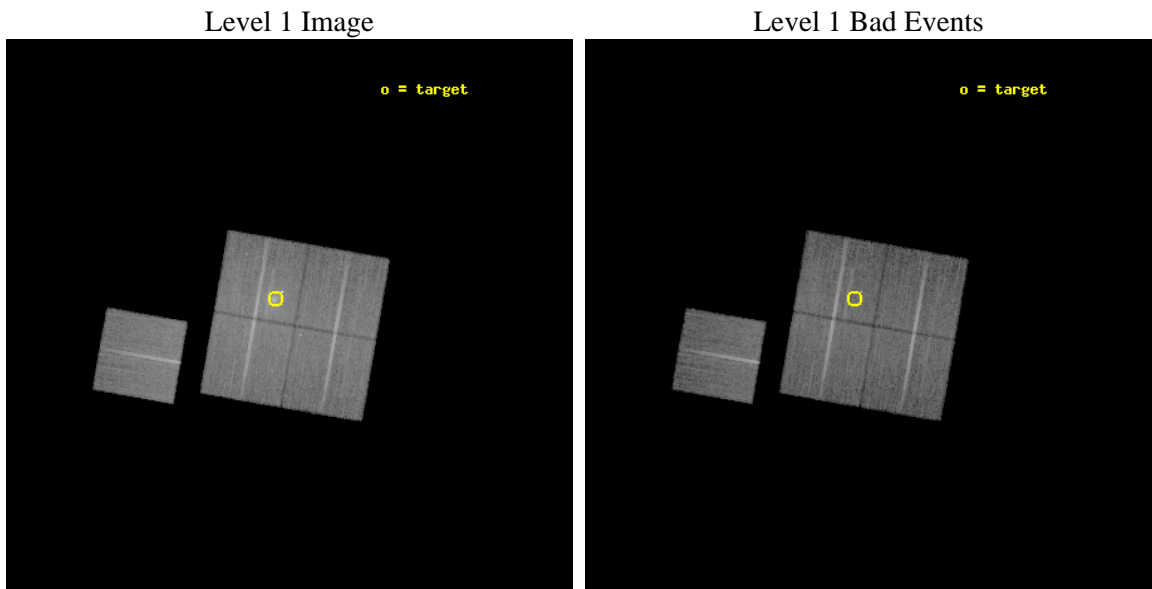
seq_num	800511	Sequence number
obs_id	5798	Observation id
title	X-ray Properties of a Mass-Selected Group Catalog	Proposal title
observer	Dr. Pasquale Mazzotta	Principal investigator
object	2PIGGz0.058 J2227.0-3041	Source name
dtycycle	0	&#160
cycle	P	events from which exps? Prim/Second/Both
ra_targ	336.975	Observer's specified target RA [deg]
dec_targ	-30.573194	Observer's specified target Dec [deg]
ra_nom	336.94598981472	Nominal RA [deg]
dec_nom	-30.615668548905	Nominal Dec [deg]
roll_nom	279.96000446204	Nominal Roll [deg]
revision	3	Processing version of data
ontime	22564.820779711	Sum of GTIs [s]
livetime	22269.994784245	Livetime [s]
ontime0	22561.556669503	Sum of GTIs [s]
ontime1	22564.738699704	Sum of GTIs [s]
ontime2	22558.497759342	Sum of GTIs [s]
ontime3	22564.820779711	Sum of GTIs [s]
ontime6	22561.515609622	Sum of GTIs [s]
l2events	96384	Number of level 2 events



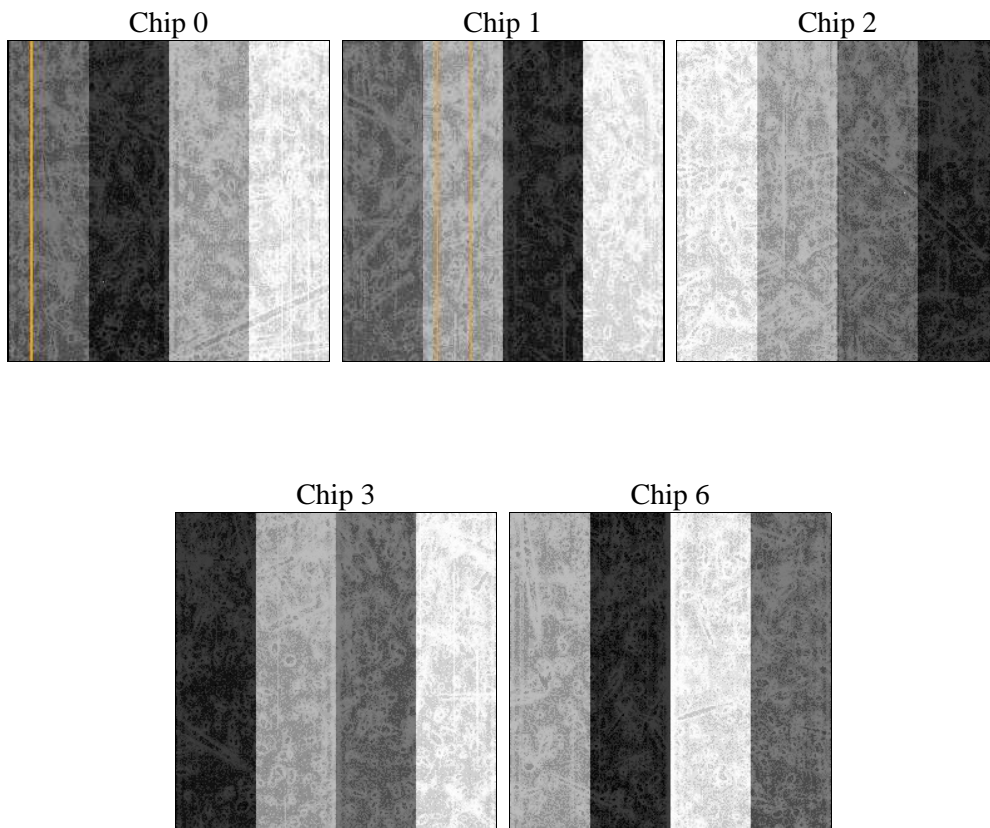
## 2 OBI

### 2.1 OBI

#### 2.1.1 Images



#### 2.1.2 Bias



### 2.1.3 Parameters

obi_num	0	Obi number	sched_exp_time	22791.849000	[s] Scheduled observation exposure time
ascdsver	8.5.1	Processing system revision	ontime	22564.820779711	Sum of GTIs [s]
caldbver	4.5.5	&#160	ontime0	22561.556669503	Sum of GTIs [s]
date	2012-12-15T05:17:20	Date and time of file creation	ontime1	22564.738699704	Sum of GTIs [s]
revision	3	Processing version of data	ontime2	22558.497759342	Sum of GTIs [s]
			ontime3	22564.820779711	Sum of GTIs [s]
			ontime6	22561.515609622	Sum of GTIs [s]
			l1events	785883	Number of level 1 events

### 2.1.4 Events

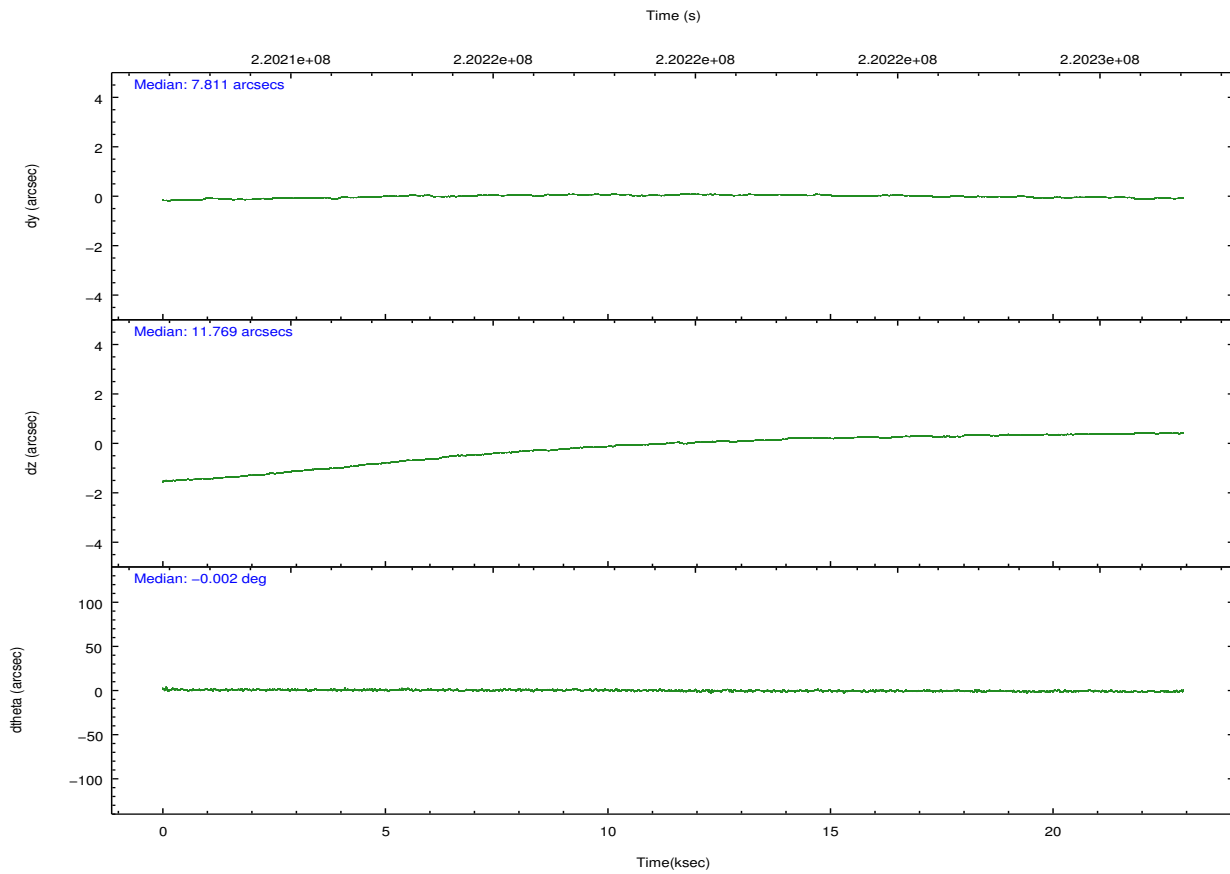
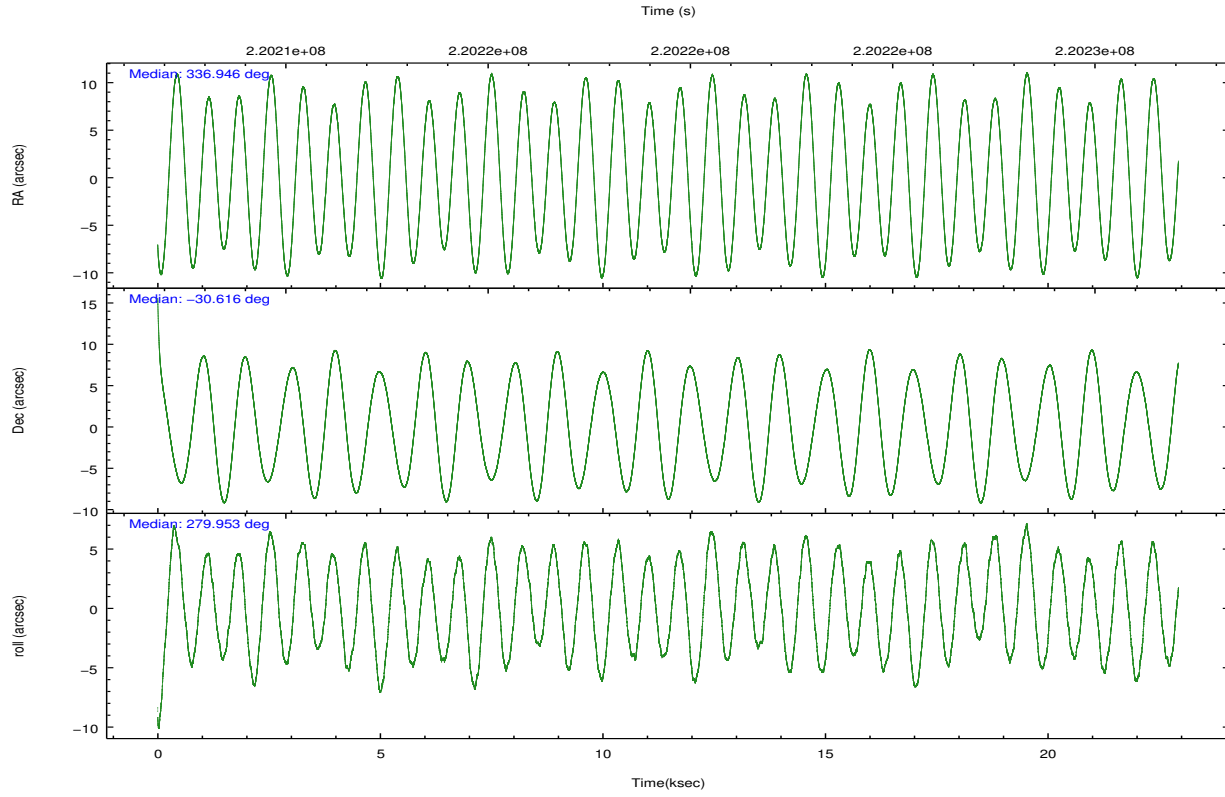
	ccd 0	ccd 1	ccd 2	ccd 3	ccd 6
level 1 events	143903	142651	163563	180590	155176
rejected events	127242	123791	145310	139914	139367
rejected %	88%	86%	88%	77%	89%

	ccd 0	ccd 1	ccd 2	ccd 3	ccd 6
grade 0 events	6588	7955	8373	27386	5992
	4%	5%	5%	15%	3%
grade 1 events	82	79	104	490	70
	0%	0%	0%	0%	0%
grade 2 events	3690	3823	3711	5252	3270
	2%	2%	2%	2%	2%
grade 3 events	1823	1902	1706	2458	1713
	1%	1%	1%	1%	1%
grade 4 events	1761	1848	1755	2318	1600
	1%	1%	1%	1%	1%
grade 5 events	5111	5585	4944	6012	5711
	3%	3%	3%	3%	3%
grade 6 events	2804	3334	2713	3271	3235
	1%	2%	1%	1%	2%
grade 7 events	122044	118125	140257	133403	133585
	84%	82%	85%	73%	86%

## 2.2 Compared Parameters

Parameter	Planned	Actual	Parameter	Planned	Actual
Instrument	ACIS	ACIS	Obspar format version number	7	7
Detector	ACIS-01236	ACIS-01236	Obspar file type	PREDICTED	ACTUAL
Grating	NONE	NONE	Obspar update status	NONE	UPDATED
Data mode	VFAINT	VFAINT	Number of optional ACIS chips dropped	0	0
Observation mode	POINTING	POINTING	On-chip summing requested	N	N
[deg] Pointing RA	336.925473	336.945989814723	Subarray requested	NONE	NONE
[deg] Pointing Dec	-30.594735	-30.61566854890533	Alternating exposures requested	N	N
[deg] Pointing Roll	279.740874	279.9600044620431	[s] Primary exposure time	0.000000	3.1
[mm] SIM focus pos	-0.782348	-0.7809083437167272			
[mm] SIM defocus	0	0.001439871863259334			
[mm] SIM translation stage pos	-233.592463	-233.5874344608287			
[mm] SIM translation stage offset	0	-0.005018542100998502			
[s] Observation start time (MET)	220208123.184000	220207004.35466			
Observation start date	2004-12-23T16:54:19	2004-12-23T16:36:44			
[s] Observation end time (MET)	220230915.184000	220231147.20575			
Observation end date	2004-12-23T23:14:11	2004-12-23T23:19:07			
Read mode	TIMED	TIMED			

## 2.3 Aspect

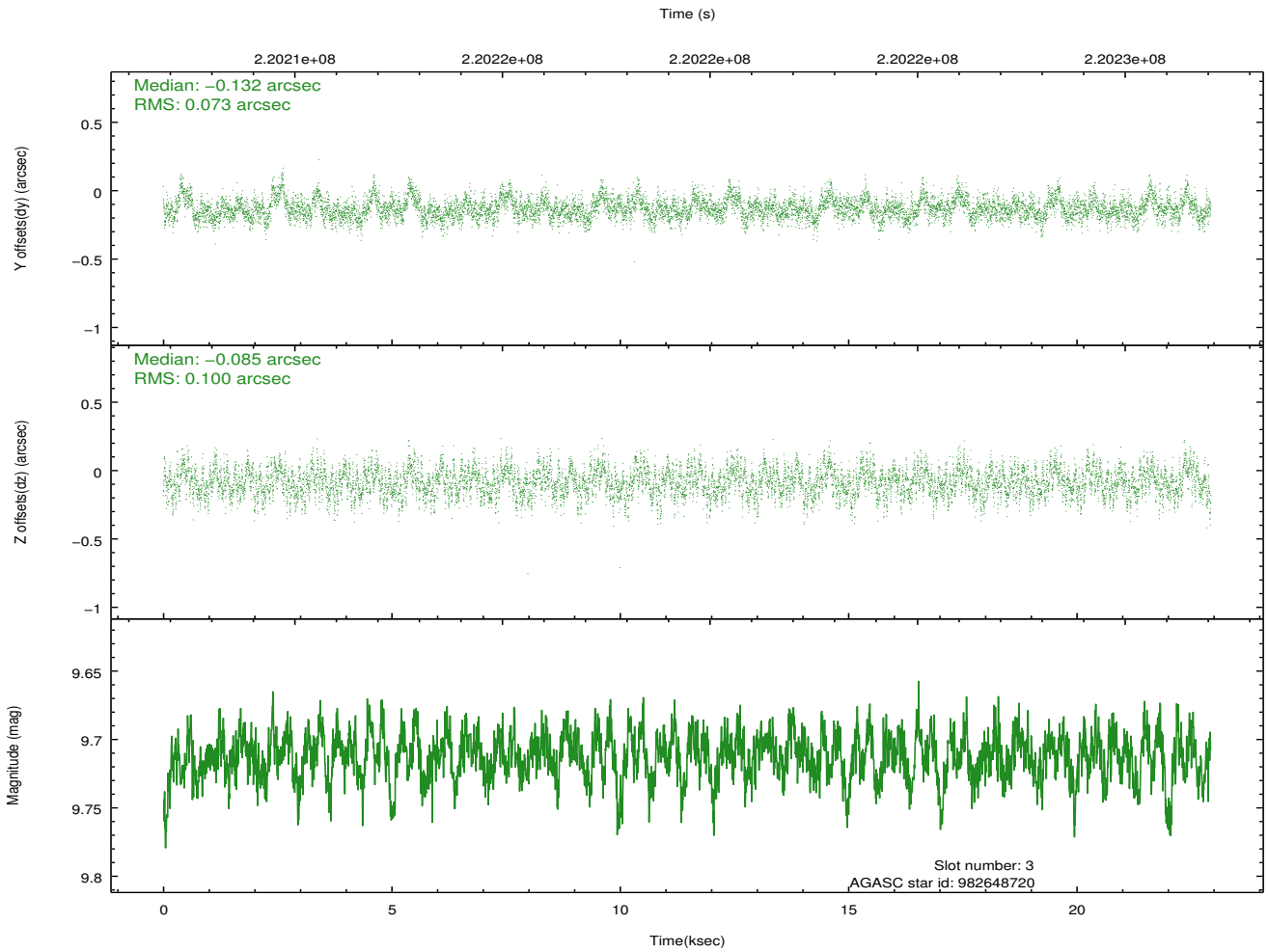
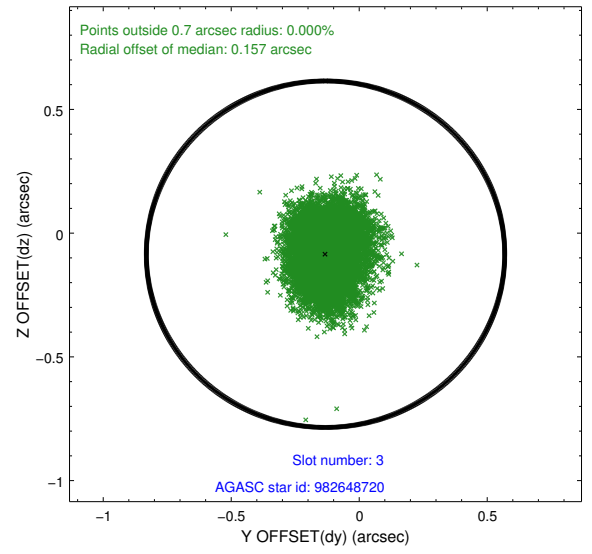
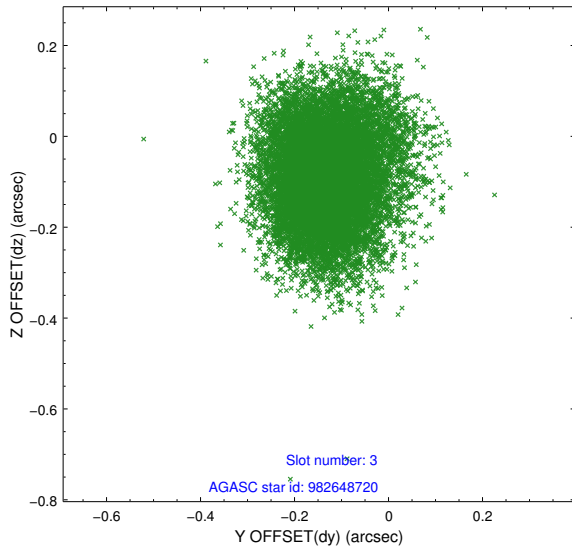


### Slot Statistics

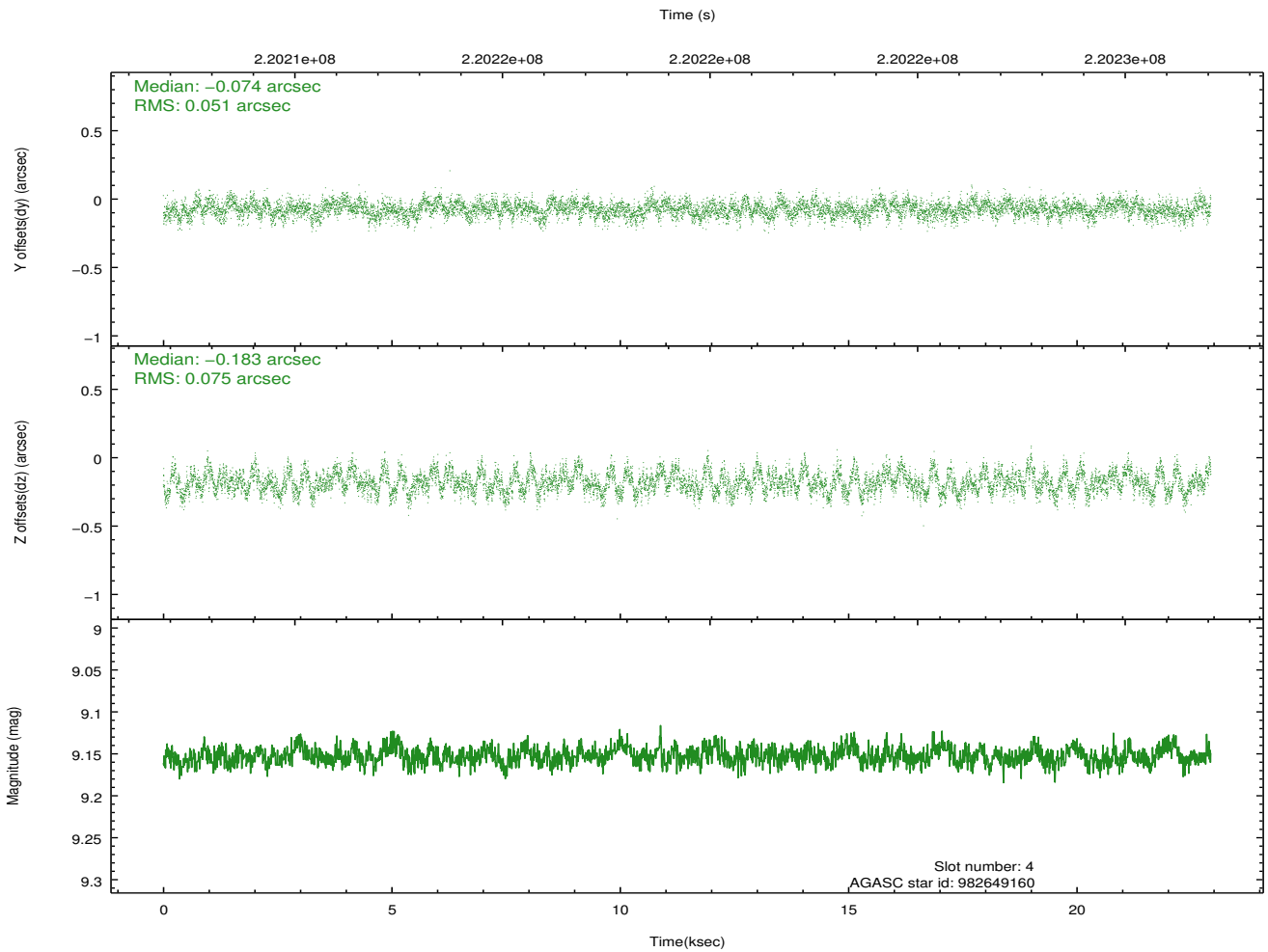
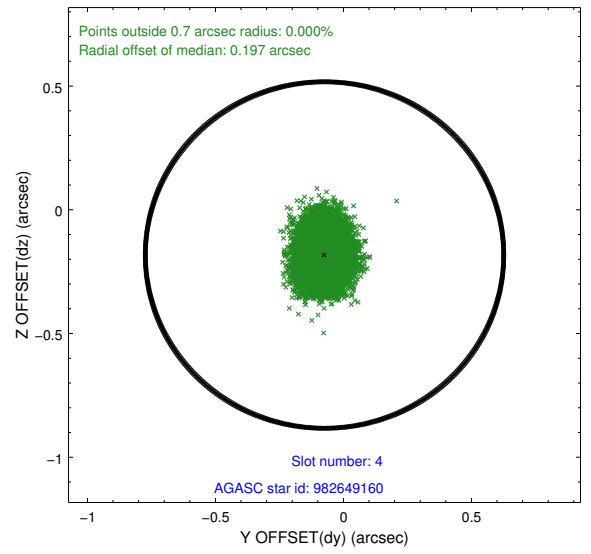
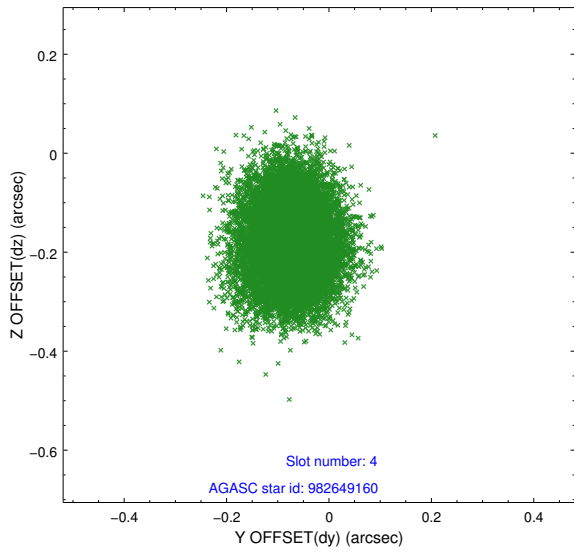
slot	status	id	mag	n_pts	med_dy	med_dz	dr1	dr2	ra	dec	mean_y	mean_z
0	FID	ACIS-I-2	7.14	5594	-0.088	-0.093	0.014	0.025	0.000000	0.000000	-762.40	-841.51
1	FID	ACIS-I-4	7.17	5594	0.171	0.079	0.010	0.017	0.000000	0.000000	2151.85	1064.76
2	FID	ACIS-I-5	7.22	5594	-0.185	0.084	0.017	0.026	0.000000	0.000000	-1816.14	1062.78
3	GUIDE	982648720	9.71	11178	-0.132	-0.085	0.132	0.213	336.252192	-30.720827	101.69	-2131.19
4	GUIDE	982649160	9.15	11185	-0.074	-0.183	0.097	0.154	336.869379	-30.231158	-1319.25	49.06
5	GUIDE	982654064	8.66	11178	0.040	0.045	0.073	0.114	337.553377	-30.438964	-217.63	2014.88
6	GUIDE	982654128	8.05	11183	0.028	-0.005	0.058	0.092	337.038536	-31.076681	1769.46	50.51
7	GUIDE	982654144	7.76	11188	0.136	0.226	0.067	0.106	337.754433	-31.025688	1971.70	2257.18

## 2.4 Star Slots

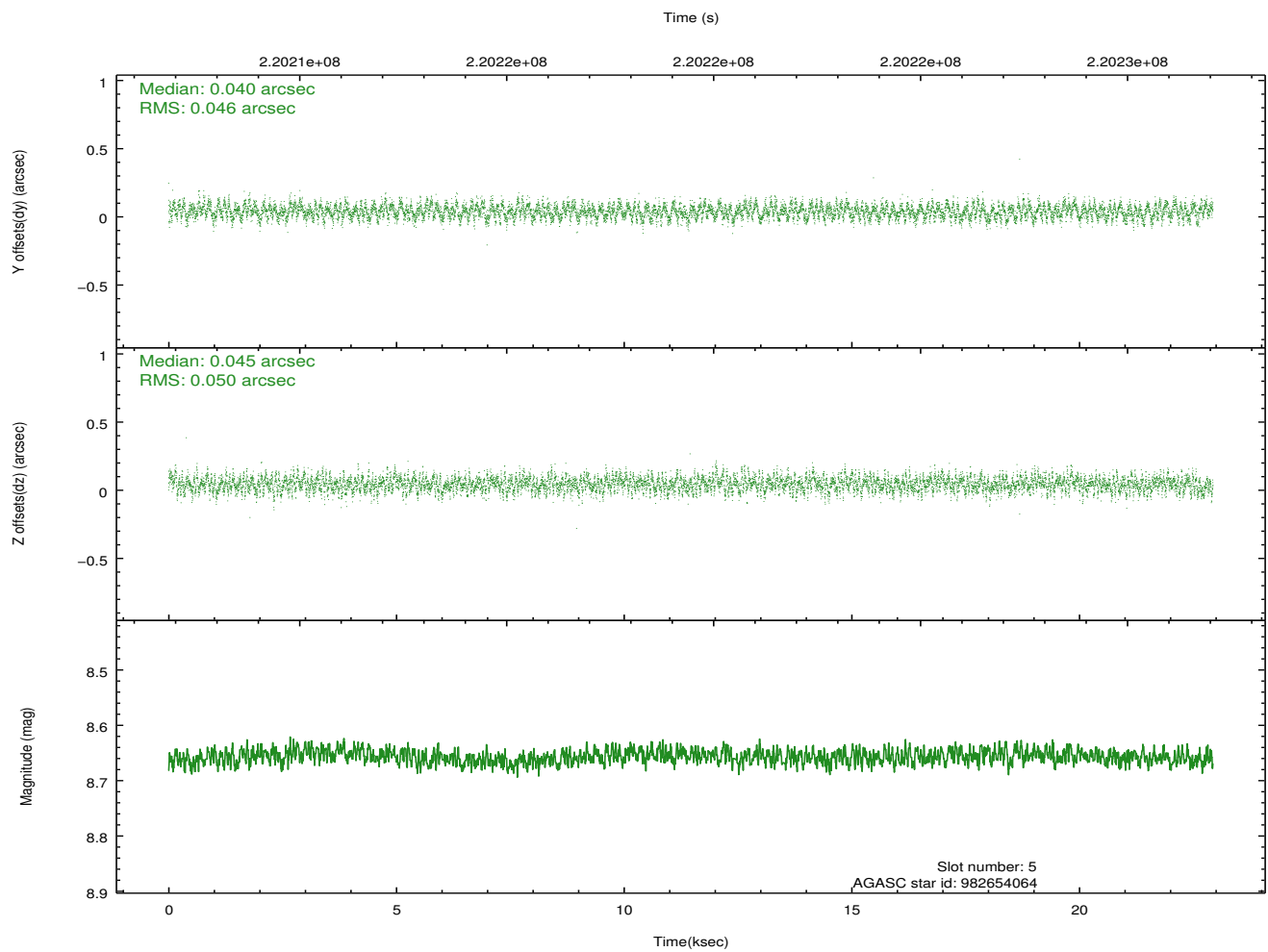
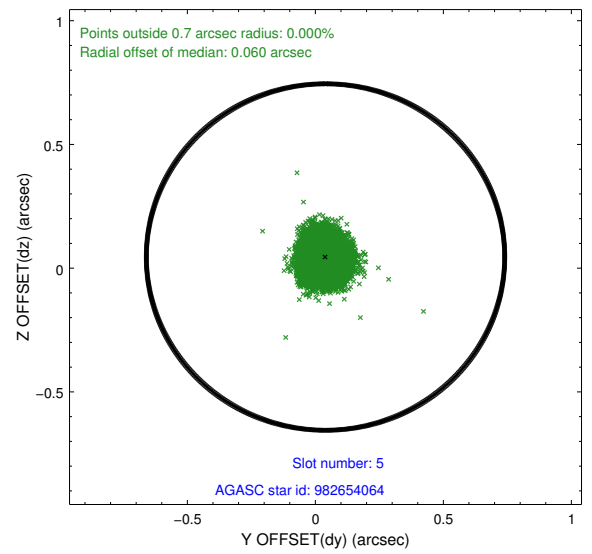
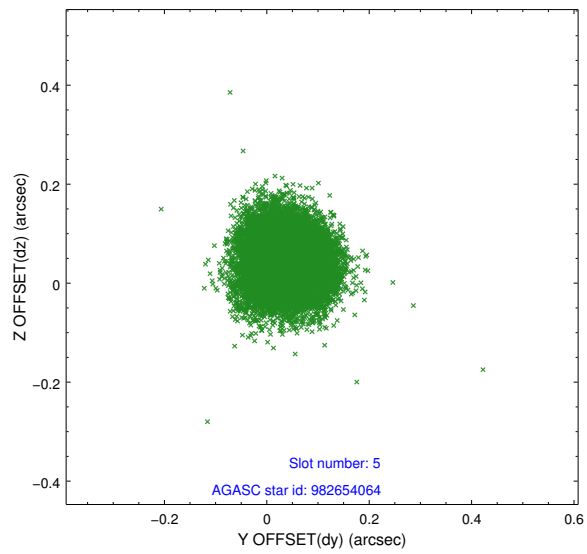
### 2.4.1 Slot 3



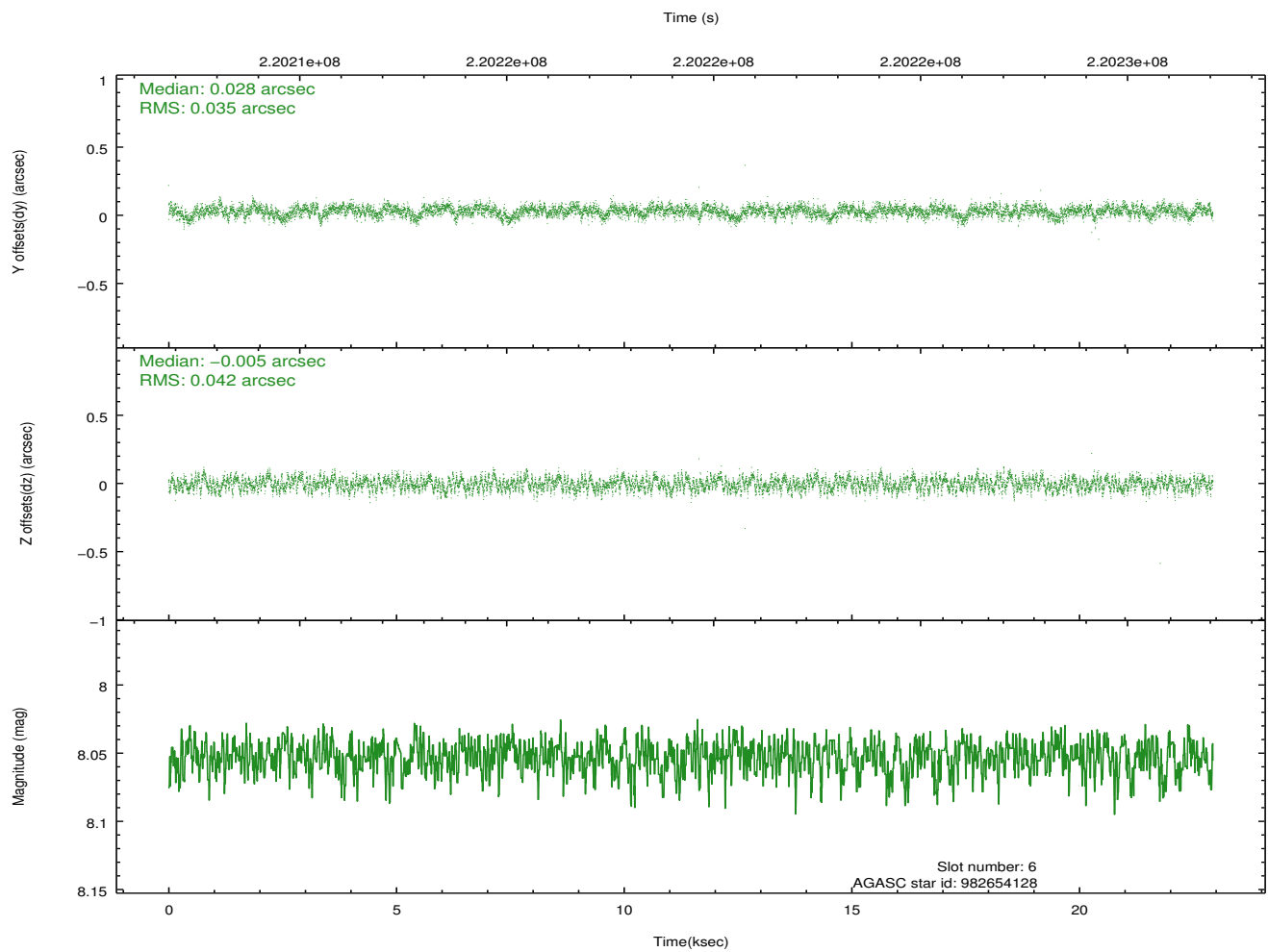
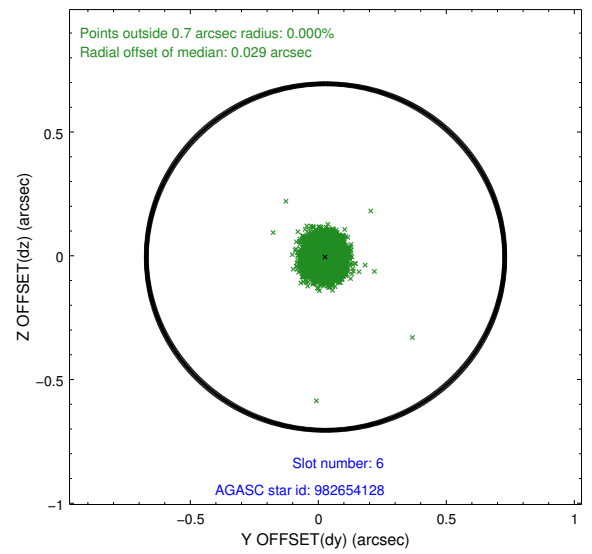
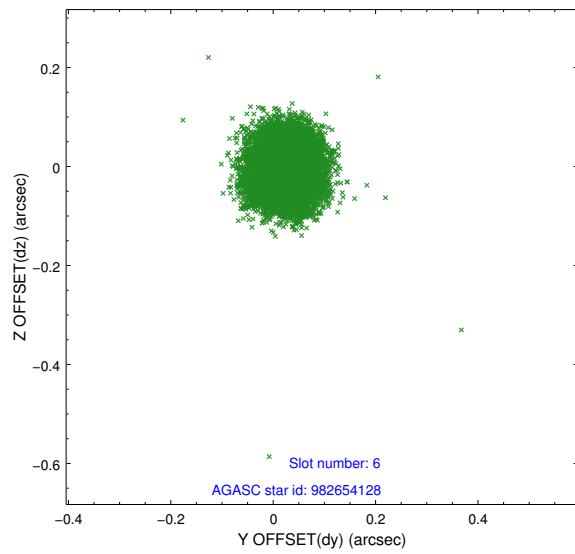
### 2.4.2 Slot 4



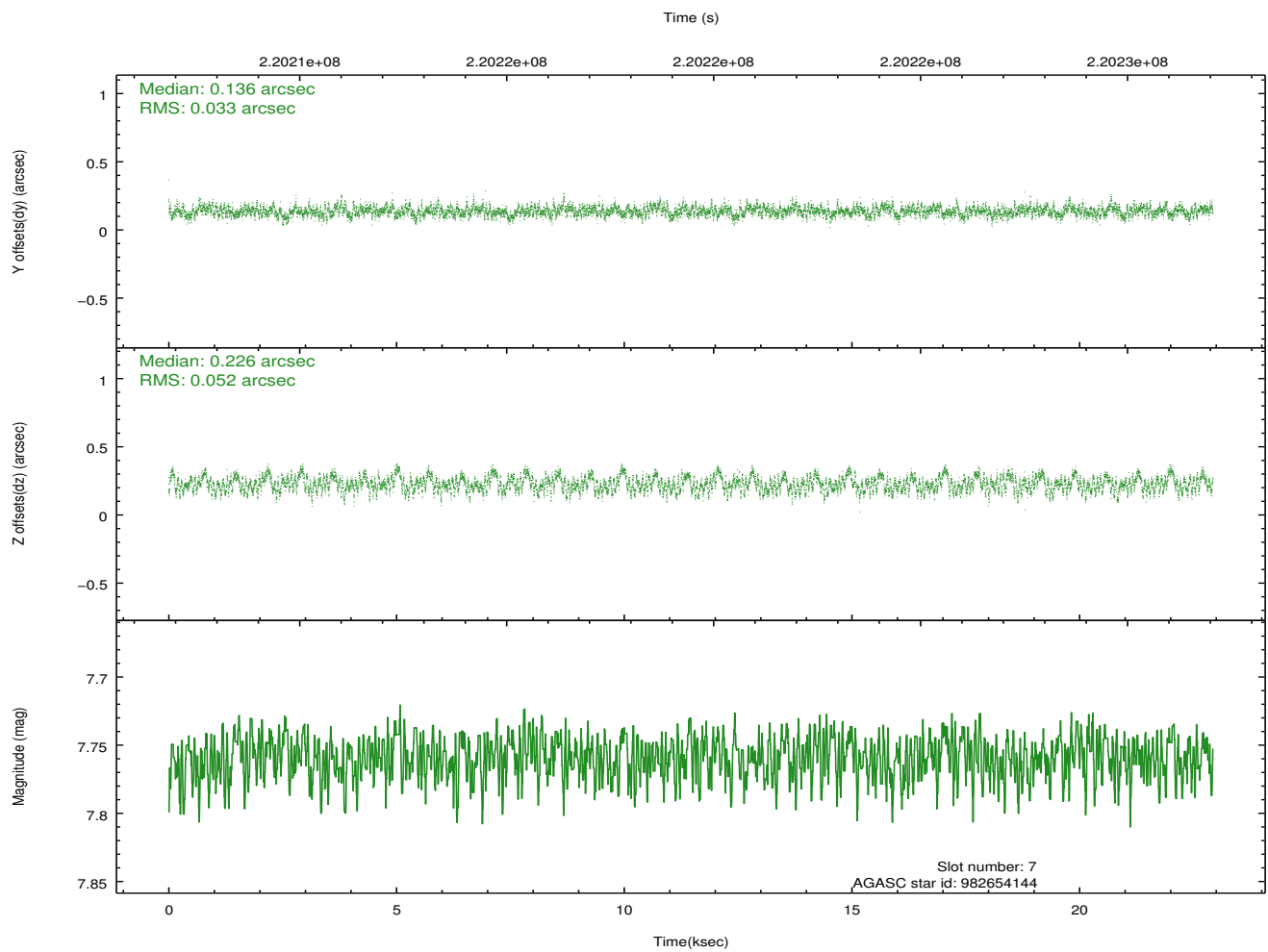
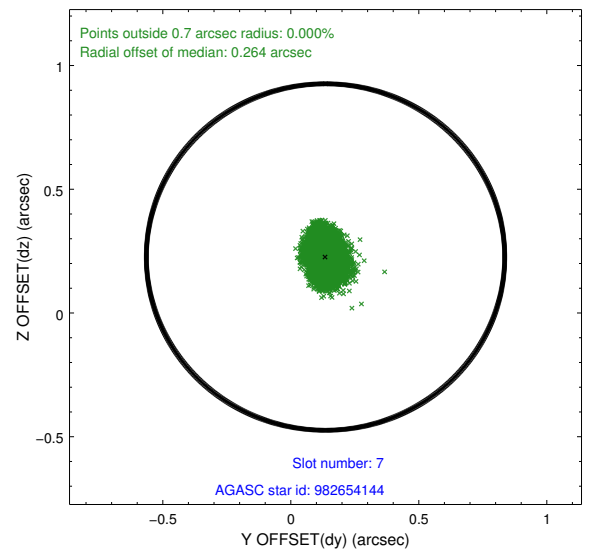
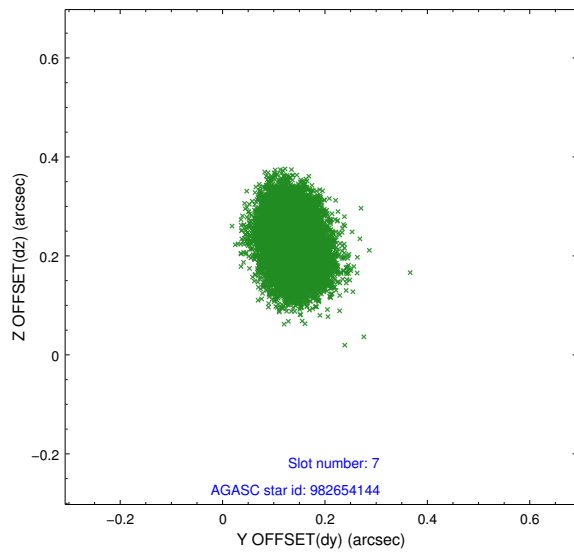
### 2.4.3 Slot 5



## 2.4.4 Slot 6

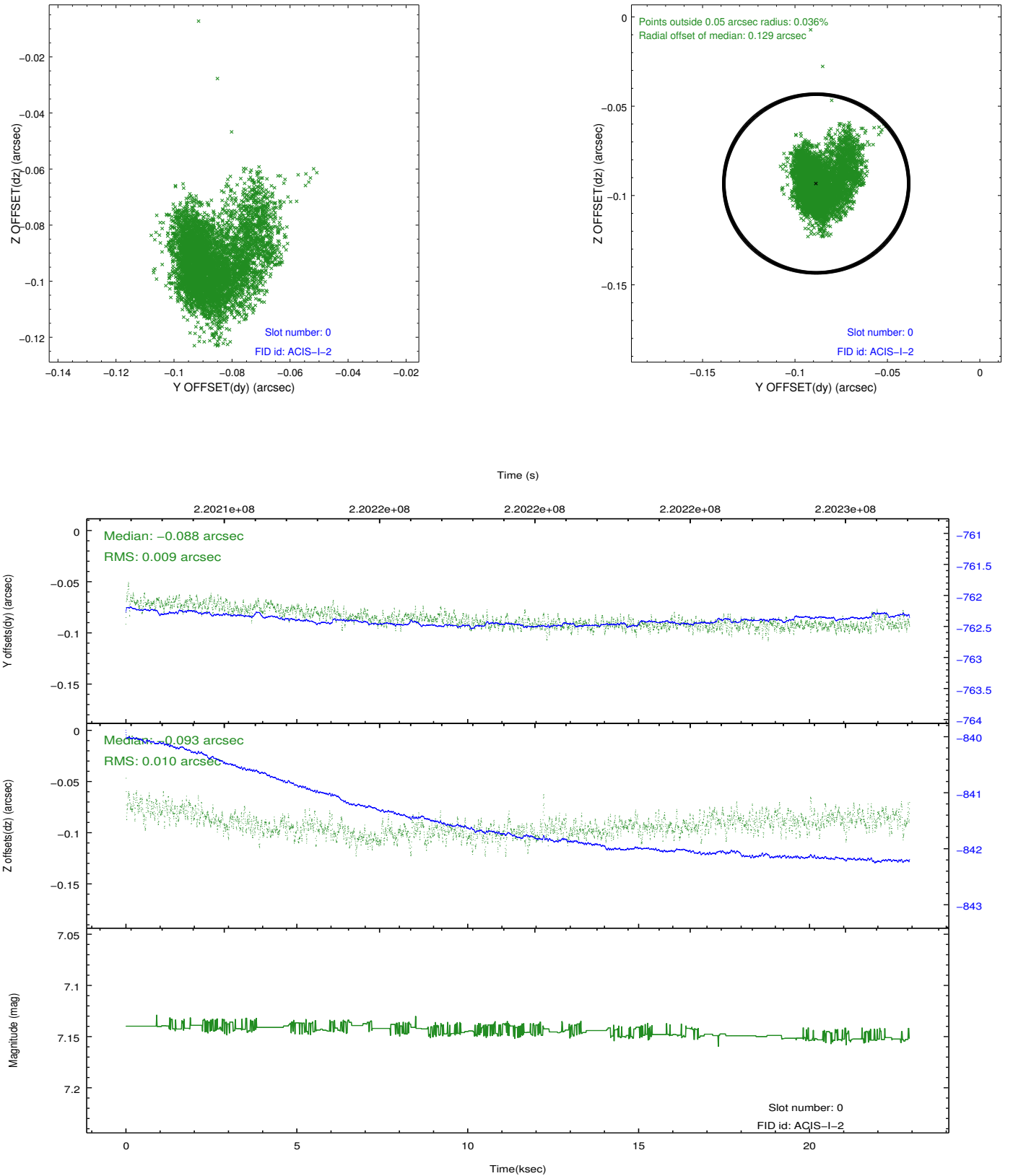


## 2.4.5 Slot 7

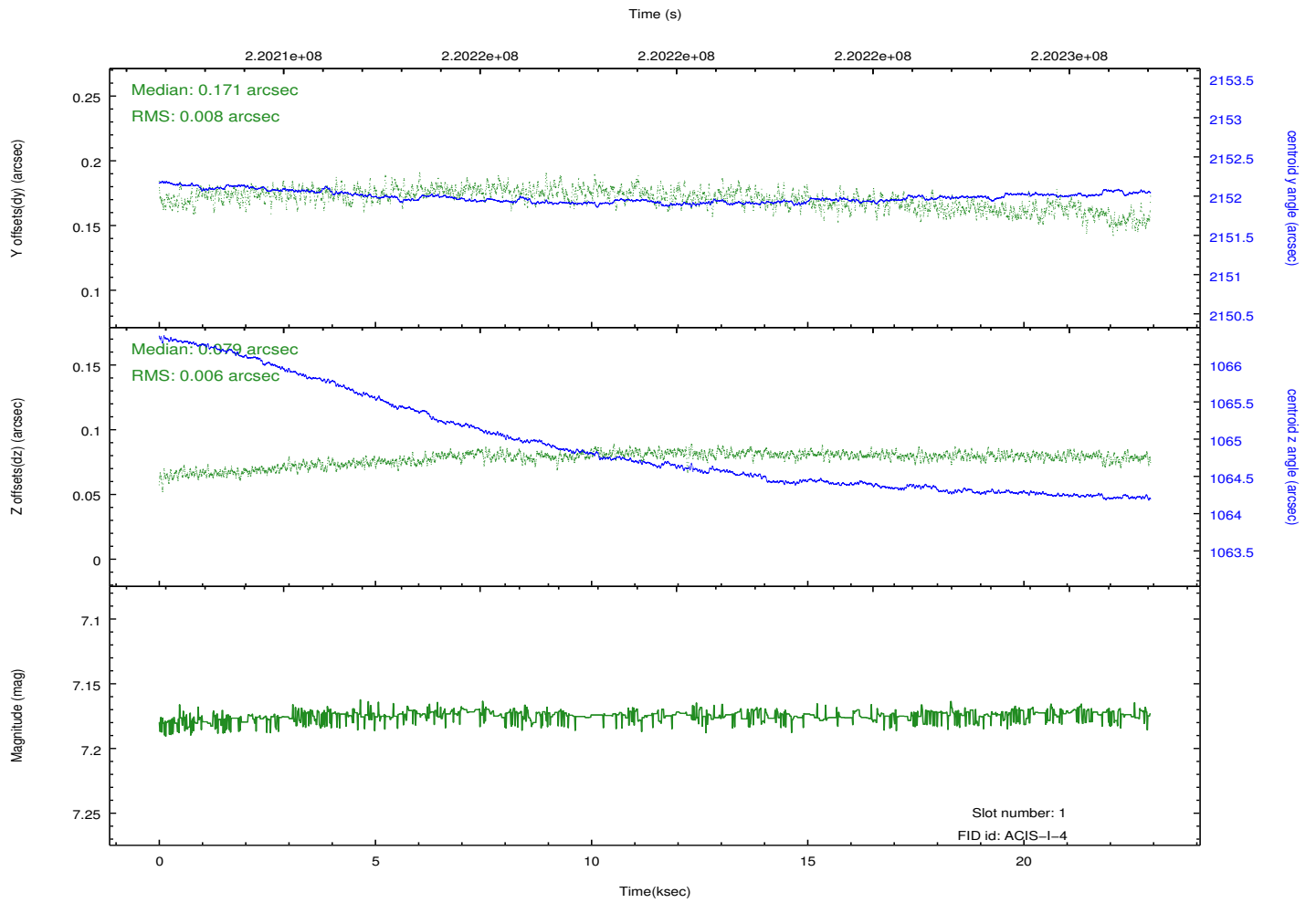
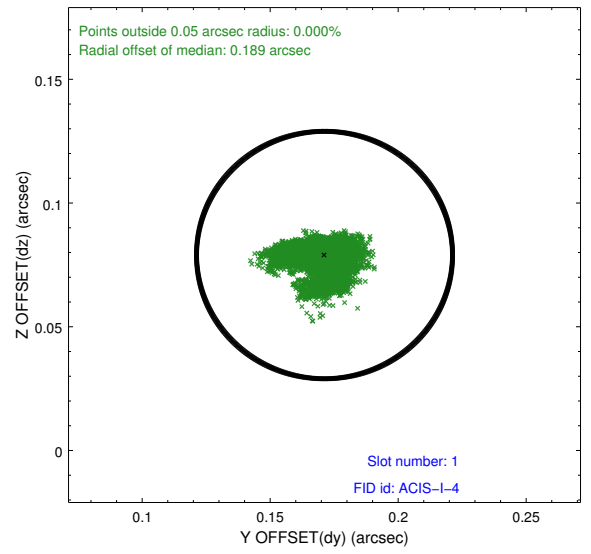
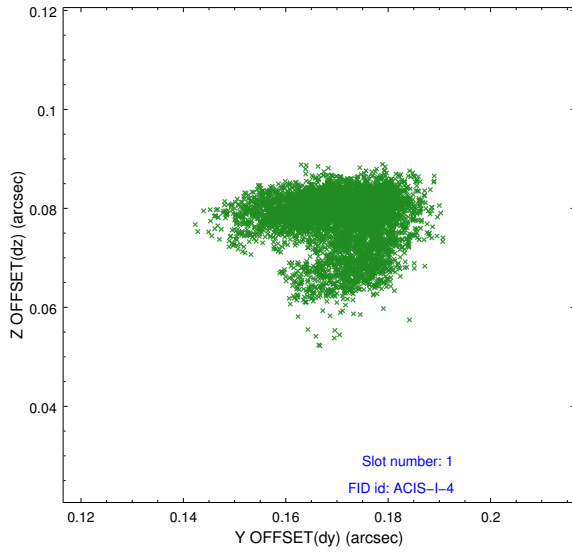


## 2.5 FID Slots

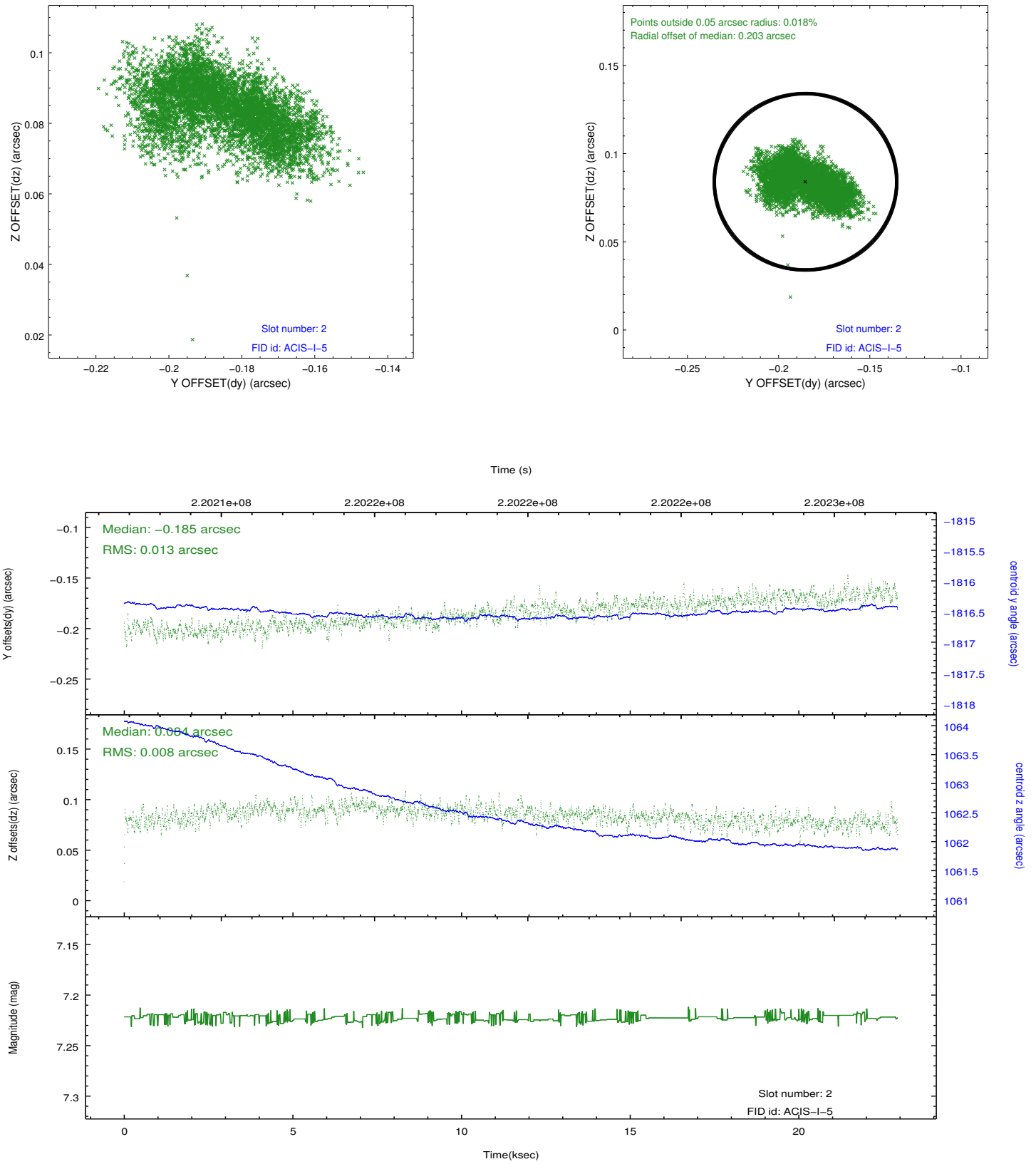
### 2.5.1 Slot 0



## 2.5.2 Slot 1



### 2.5.3 Slot 2



# A Summary

## A.1 Status

V&V Scientist	Beth Sundheim
V&V Date (YYYY-MM-DD)	2013.01.07
V&V Edition	1
V&V Disposition and Status	OK
V&V Charge Time	22.56489

## A.2 Comments