

V&V Reference Report

L2 ASCDS Version : 8.5.1.1

Observation 5908 - L2 Version 3
Chandra X-Ray Center

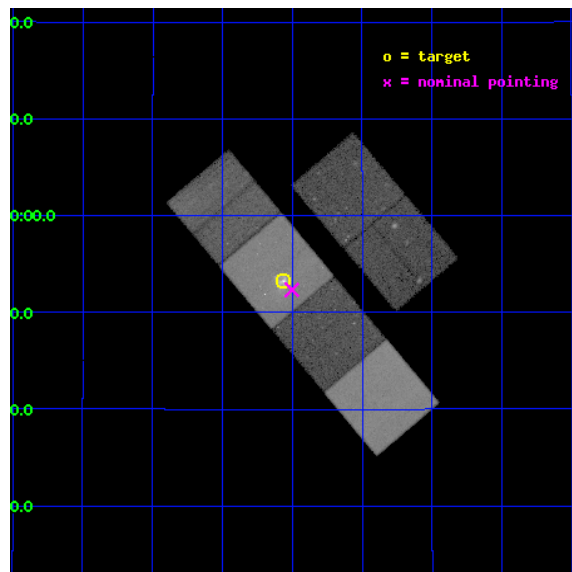
L2 Processing Date : Dec 23 2012

Contents

1	Front	2
2	OBI	3
2.1	OBI	3
2.1.1	Images	3
2.1.2	Bias	3
2.1.3	Parameters	4
2.1.4	Events	4
2.2	Compared Parameters	5
2.3	Aspect	6
2.4	Star Slots	9
2.4.1	Slot 3	9
2.4.2	Slot 4	10
2.4.3	Slot 5	11
2.4.4	Slot 6	12
2.4.5	Slot 7	13
2.5	FID Slots	14
2.5.1	Slot 0	14
2.5.2	Slot 1	15
2.5.3	Slot 2	16
A	Summary	17
A.1	Status	17
A.2	Comments	17

1 Front

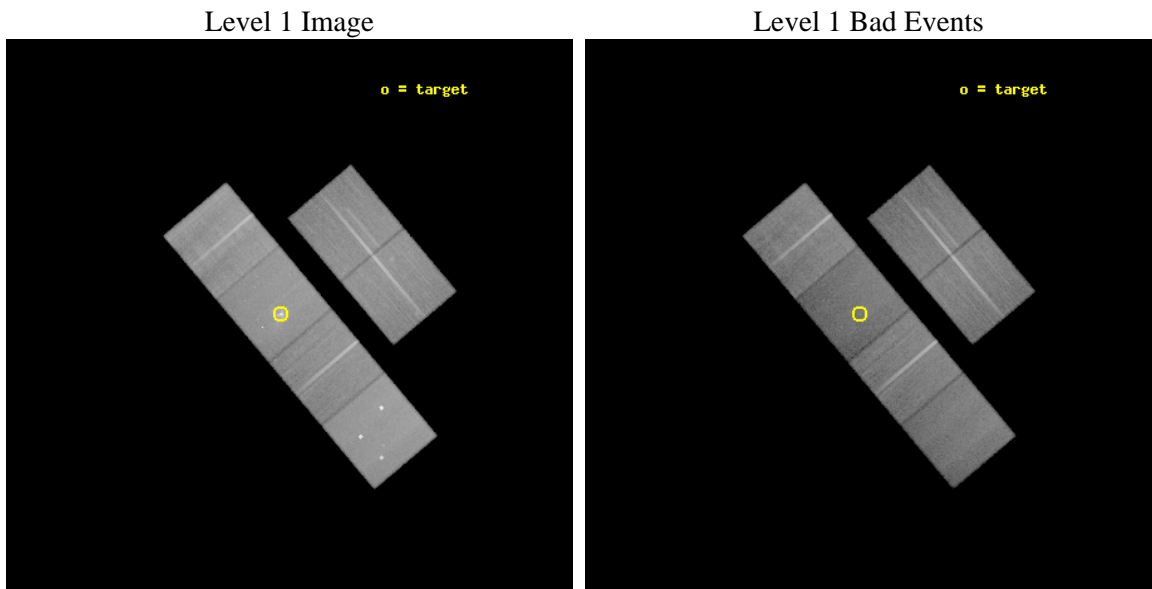
seq_num	600427	Sequence number
obs_id	5908	Observation id
title	The Exploding Galaxies M84 and M89	Proposal title
observer	Dr. Christine Jones	Principal investigator
object	M84	Source name
dtcycle	0	
cycle	P	events from which exps? Prim/Second/Both
ra_targ	186.265833	Observer's specified target RA [deg]
dec_targ	12.886944	Observer's specified target Dec [deg]
ra_nom	186.25080028752	Nominal RA [deg]
dec_nom	12.872230231945	Nominal Dec [deg]
roll_nom	229.87098482797	Nominal Roll [deg]
revision	3	Processing version of data
ontime	46675.199826121	Sum of GTIs [s]
livetime	46084.170341492	Livetime [s]
ontime2	46671.958845854	Sum of GTIs [s]
ontime3	46671.958815902	Sum of GTIs [s]
ontime5	46675.199826121	Sum of GTIs [s]
ontime6	46671.95883584	Sum of GTIs [s]
ontime7	46675.199826121	Sum of GTIs [s]
ontime8	46675.199826121	Sum of GTIs [s]
l2events	501812	Number of level 2 events



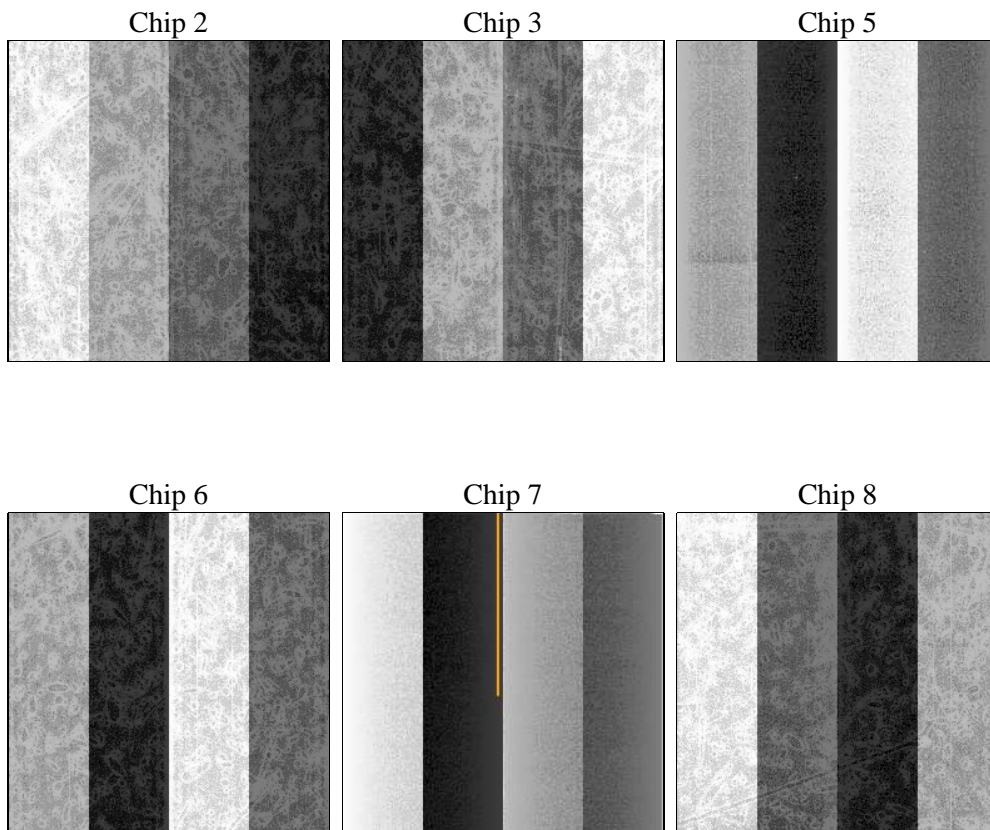
2 OBI

2.1 OBI

2.1.1 Images



2.1.2 Bias



2.1.3 Parameters

obi_num	0	Obi number	sched_exp_time	46500.000000	[s] Scheduled observation exposure time
ascdsver	8.5.1.1	Processing system revision	ontime	46675.199826121	Sum of GTIs [s]
caldbver	4.5.5	 	ontime2	46671.958845854	Sum of GTIs [s]
date	2012-12-23T03:57:28	Date and time of file creation	ontime3	46671.958815902	Sum of GTIs [s]
revision	3	Processing version of data	ontime5	46675.199826121	Sum of GTIs [s]
			ontime6	46671.95883584	Sum of GTIs [s]
			ontime7	46675.199826121	Sum of GTIs [s]
			ontime8	46675.199826121	Sum of GTIs [s]
			l1events	2116481	Number of level 1 events

2.1.4 Events

	ccd 2	ccd 3	ccd 5	ccd 6	ccd 7	ccd 8		ccd 2	ccd 3	ccd 5	ccd 6	ccd 7	ccd 8
level 1 events	320084	292218	426239	302235	373144	402561	grade 0 events	13072	13441	36301	15195	26605	45093
rejected events	288449	261242	211660	267020	187025	296032		4%	4%	8%	5%	7%	11%
rejected %	90%	89%	49%	88%	50%	73%	grade 1 events	158	158	449	148	312	361
								0%	0%	0%	0%	0%	0%
							grade 2 events	7220	6288	60823	7058	41066	21630
								2%	2%	14%	2%	11%	5%
							grade 3 events	3246	3318	9203	3553	19111	9855
								1%	1%	2%	1%	5%	2%
							grade 4 events	3372	3262	8924	3616	18779	9007
								1%	1%	2%	1%	5%	2%
							grade 5 events	10186	11579	33287	12114	36134	17207
								3%	3%	7%	4%	9%	4%
							grade 6 events	5531	5444	105236	6656	84820	23708
								1%	1%	24%	2%	22%	5%
							grade 7 events	277299	248728	172016	253895	146317	275700
								86%	85%	40%	84%	39%	68%

2.2 Compared Parameters

Parameter	Planned	Actual	Parameter	Planned	Actual
Instrument	ACIS	ACIS	Obspar format version number	7	7
Detector	ACIS-235678	ACIS-235678	Obspar file type	PREDICTED	ACTUAL
Grating	NONE	NONE	Obspar update status	NONE	UPDATED
Data mode	VFAINT	VFAINT	Number of optional ACIS chips dropped	0	0
Observation mode	POINTING	POINTING	On-chip summing requested	N	N
[deg] Pointing RA	186.255346	186.250800287517	Subarray requested	NONE	NONE
[deg] Pointing Dec	12.899106	12.87223023194451	Alternating exposures requested	N	N
[deg] Pointing Roll	229.713334	229.8709848279737	[s] Primary exposure time	0.000000	3.2
[mm] SIM focus pos	-0.684267	-0.6828225247311905			
[mm] SIM defocus	0	0.001444936568705701			
[mm] SIM translation stage pos	-190.132523	-190.1400660498719			
[mm] SIM translation stage offset	0	0.00754346686406393			
[s] Observation start time (MET)	231308894.184000	231307189.05726			
Observation start date	2005-05-01T04:27:10	2005-05-01T03:59:49			
[s] Observation end time (MET)	231355394.184000	231355846.83448			
Observation end date	2005-05-01T17:22:10	2005-05-01T17:30:46			
Read mode	TIMED	TIMED			

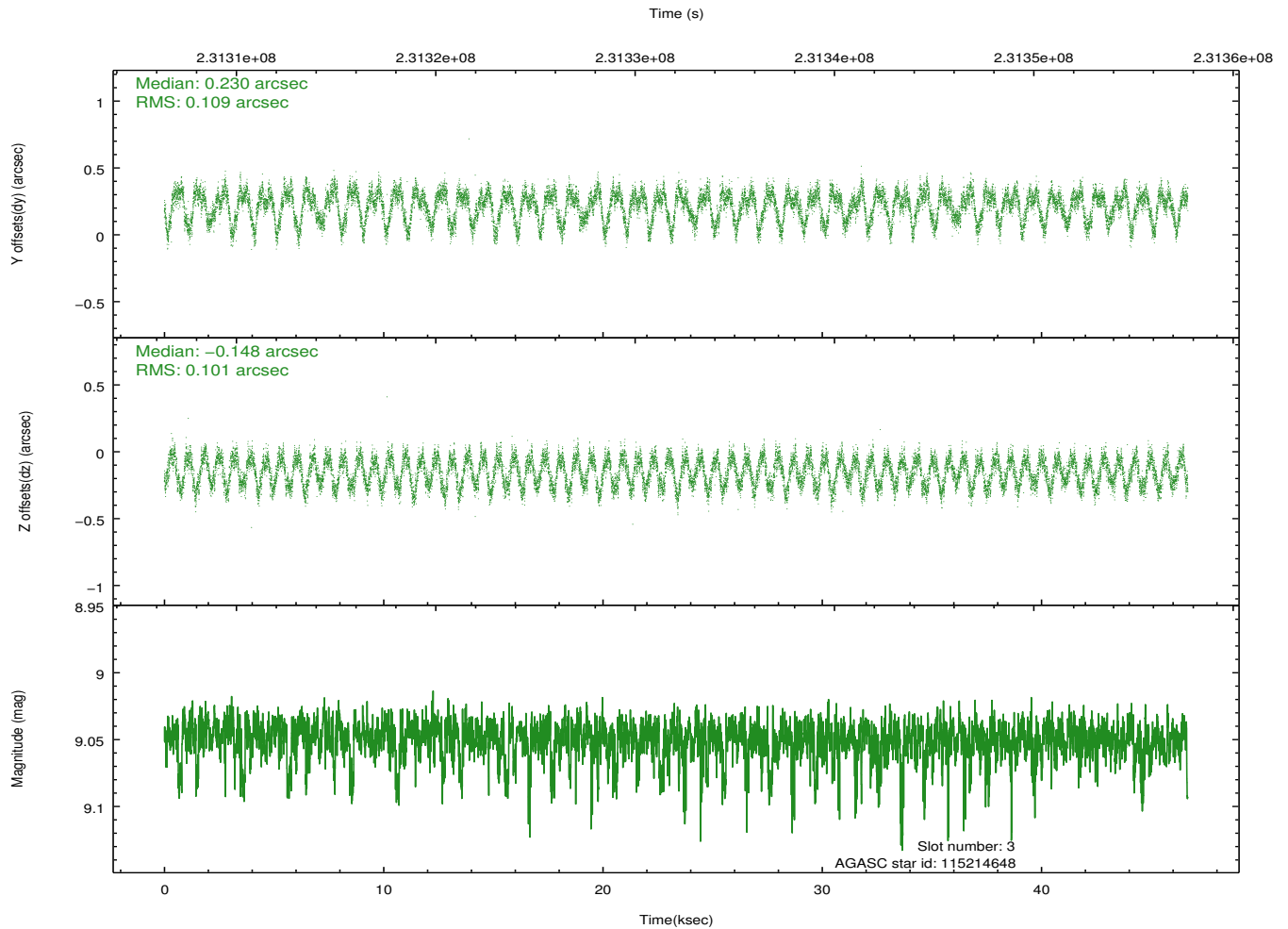
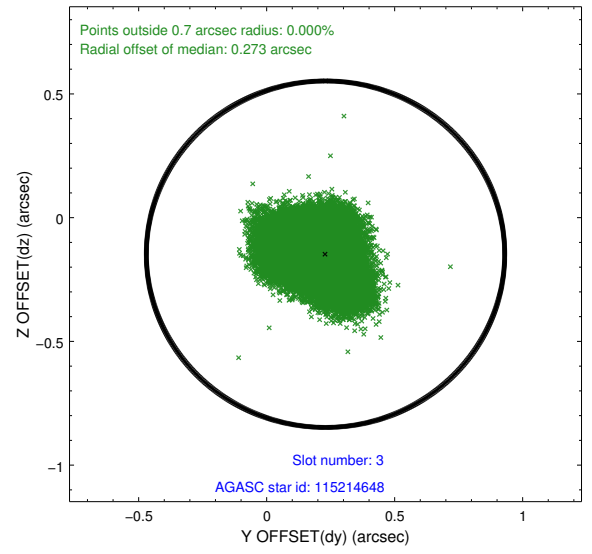
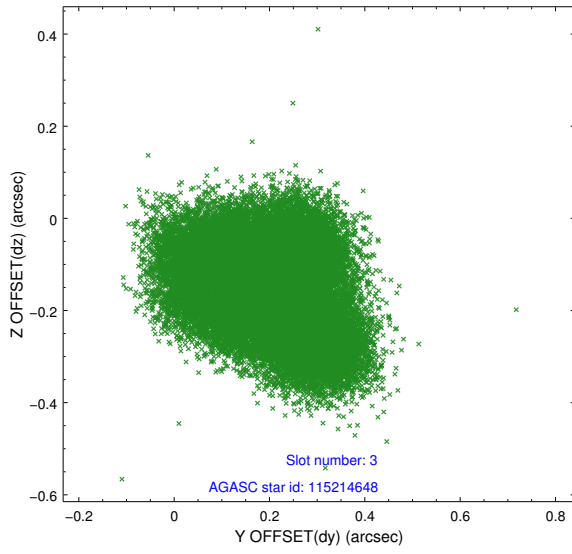
2.3 Aspect

Slot Statistics

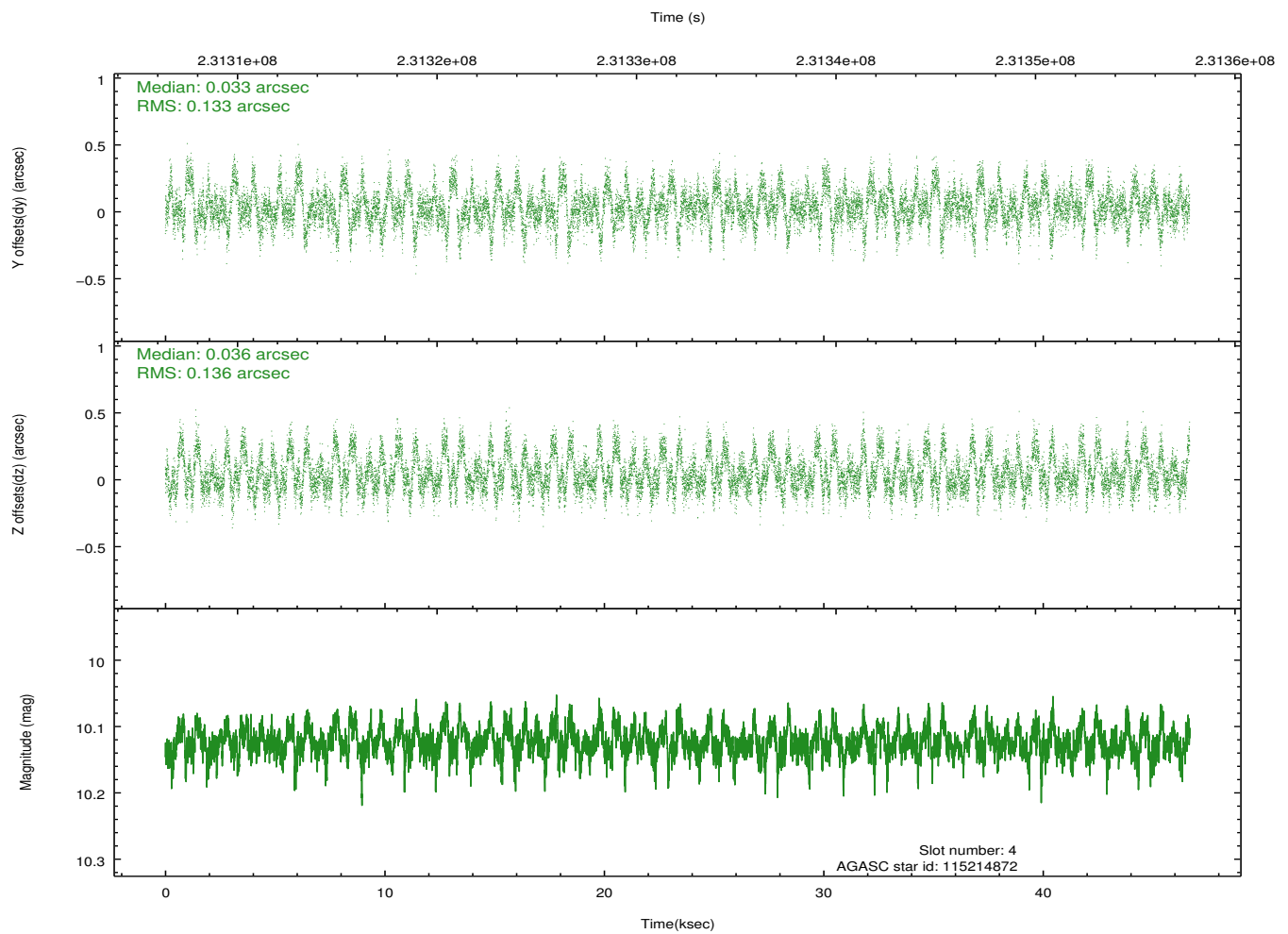
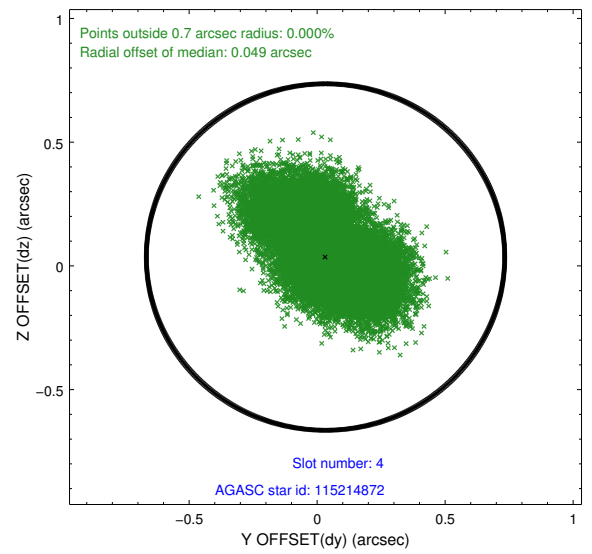
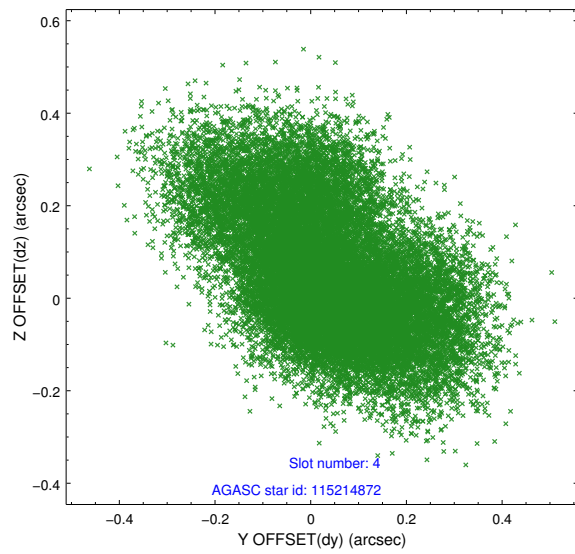
slot	status	id	mag	n_pts	med_dy	med_dz	dr1	dr2	ra	dec	mean_y	mean_z
0	FID	ACIS-S-2	7.11	11386	-0.044	-0.021	0.007	0.011	0.000000	0.000000	-760.60	-1731.40
1	FID	ACIS-S-4	7.21	11384	0.107	0.027	0.006	0.013	0.000000	0.000000	2152.79	177.21
2	FID	ACIS-S-5	7.23	11384	-0.093	0.003	0.007	0.014	0.000000	0.000000	-1813.55	170.76
3	GUIDE	115214648	9.05	22758	0.230	-0.148	0.162	0.241	185.771147	12.685188	1686.58	-800.29
4	GUIDE	115214872	10.12	22747	0.033	0.036	0.203	0.337	185.840719	12.668185	1575.54	-573.94
5	GUIDE	115215968	10.21	22673	-0.084	0.185	0.134	0.220	186.327588	13.159527	-878.47	-412.89
6	GUIDE	115347480	9.45	22753	-0.188	-0.114	0.083	0.135	186.668576	13.310410	-2066.26	145.90
7	GUIDE	115349744	10.34	22683	0.025	0.032	0.157	0.252	186.878186	12.752529	-1013.38	2007.84

2.4 Star Slots

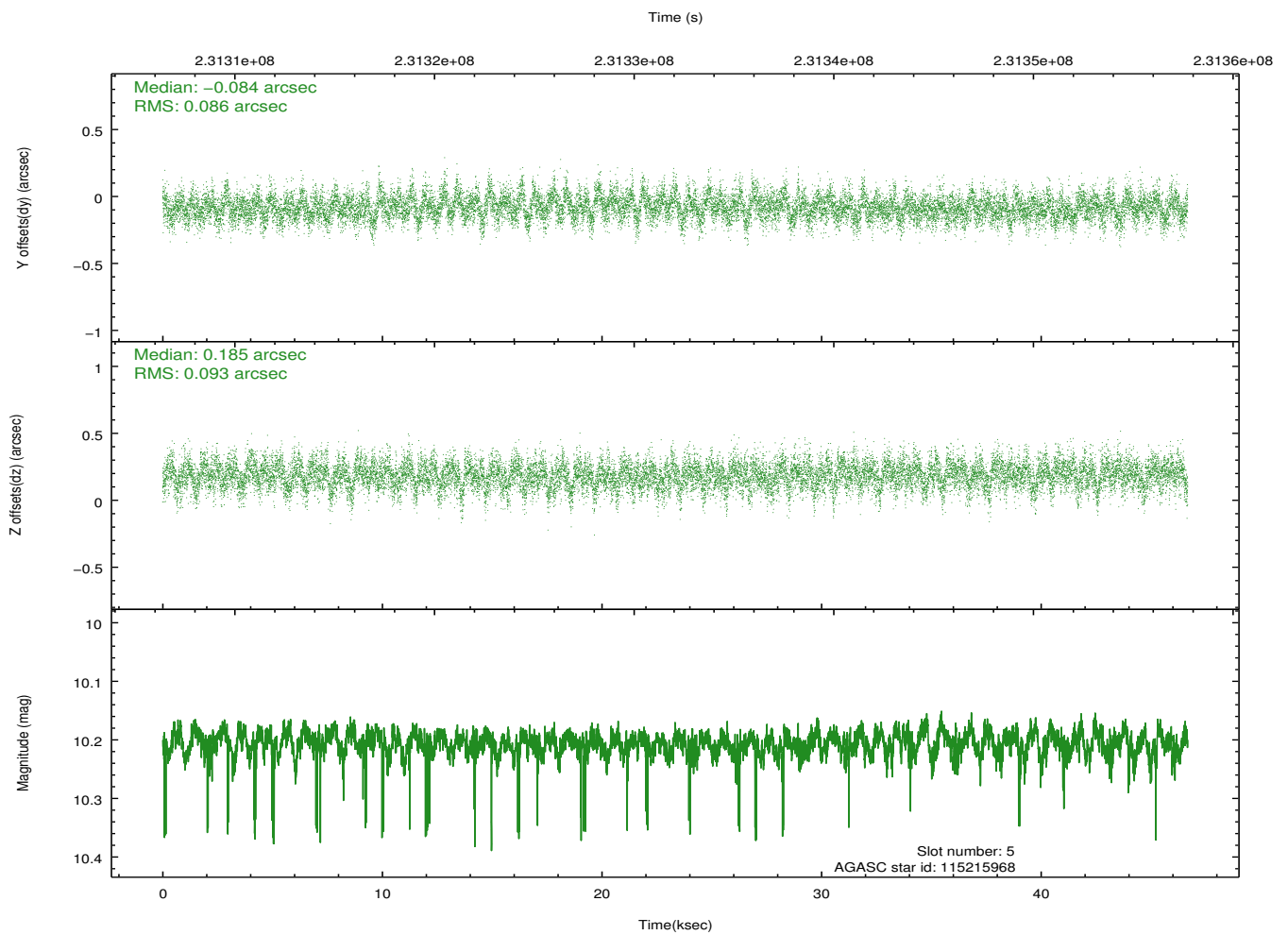
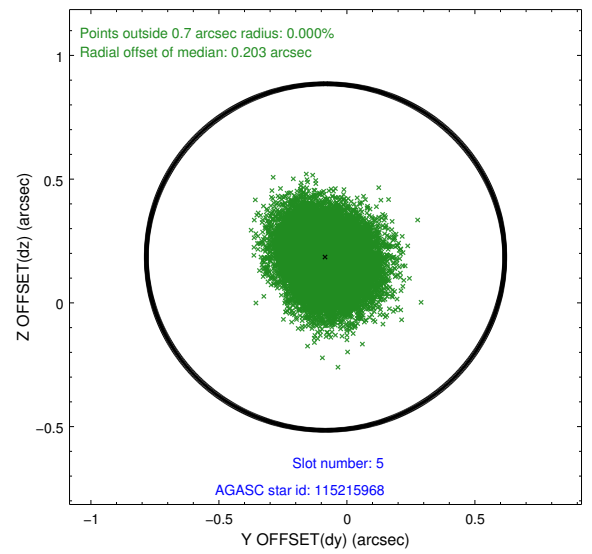
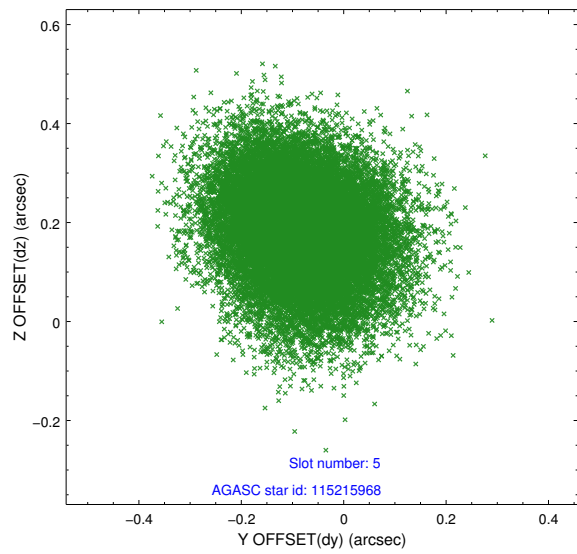
2.4.1 Slot 3



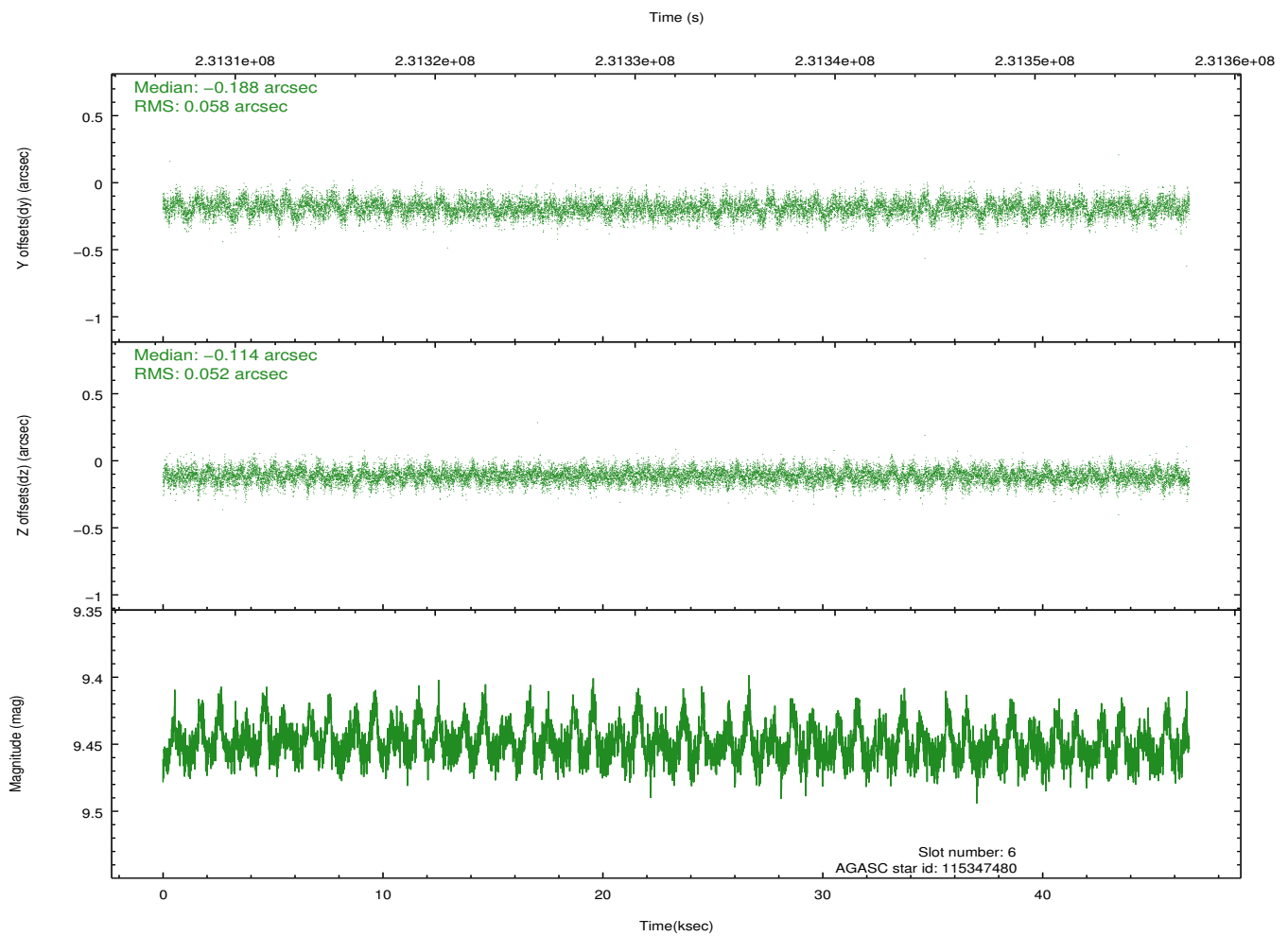
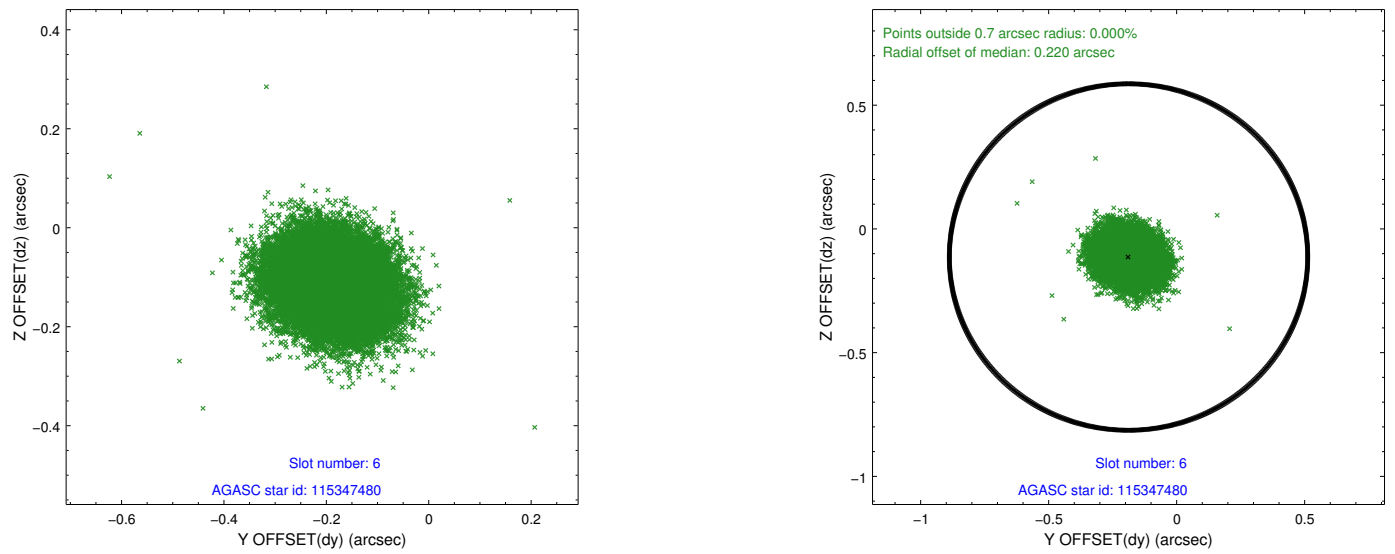
2.4.2 Slot 4



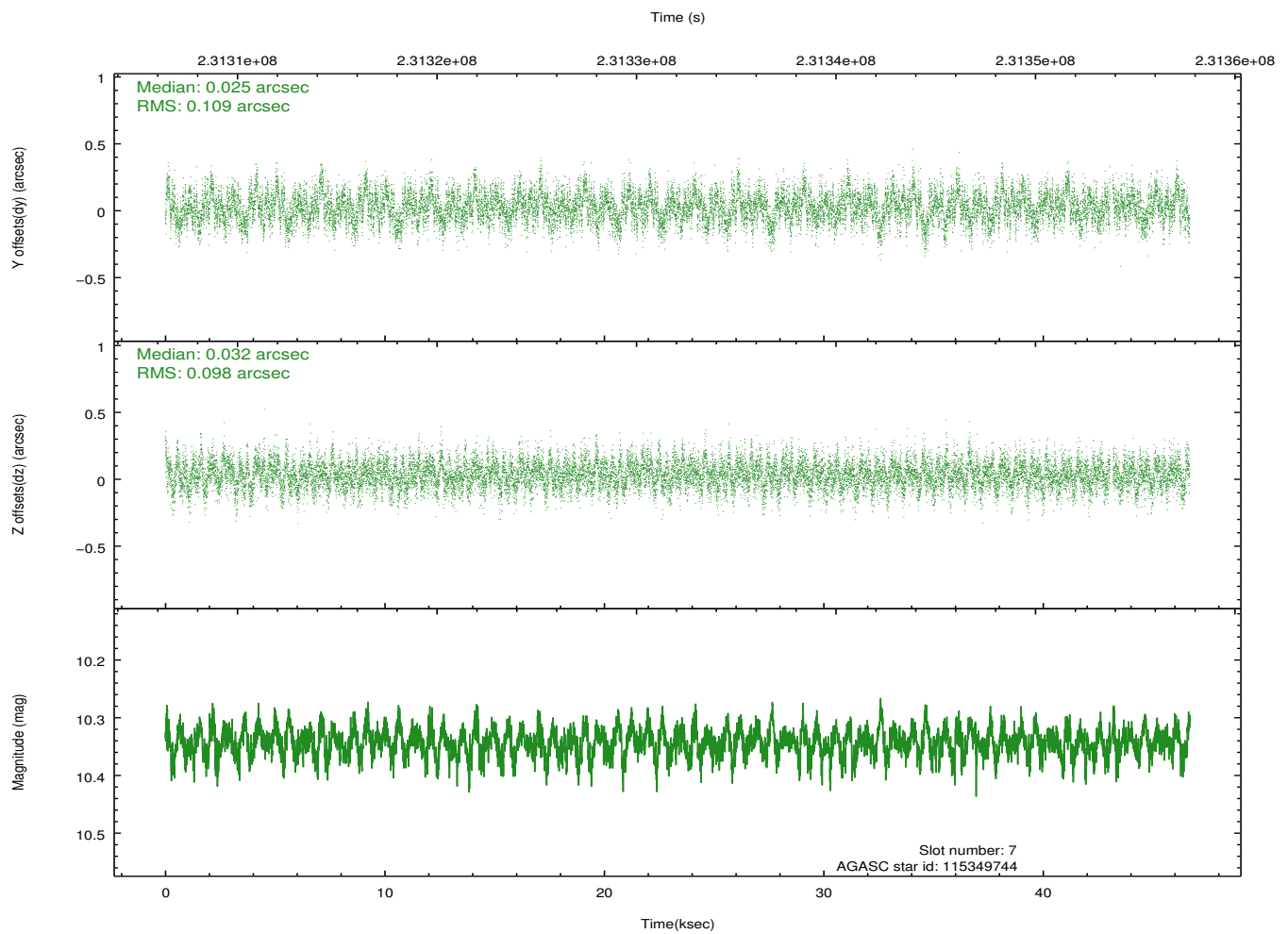
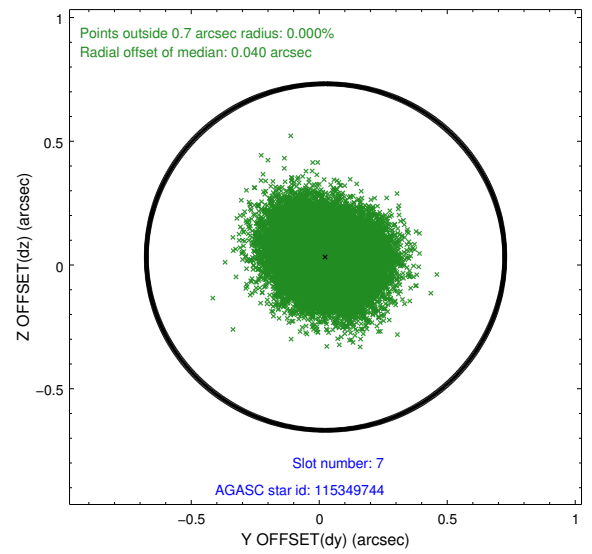
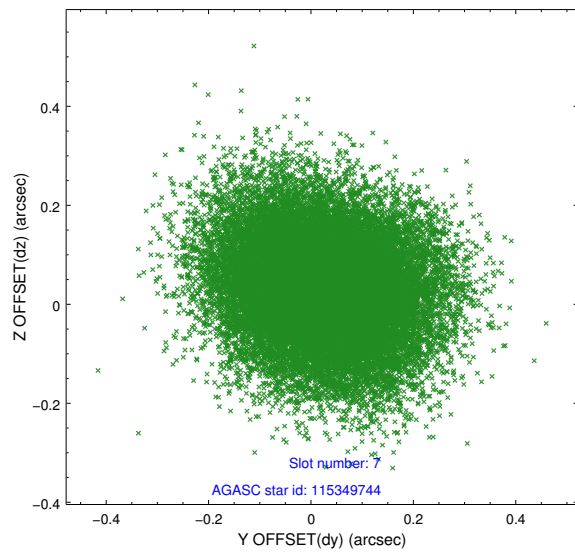
2.4.3 Slot 5



2.4.4 Slot 6

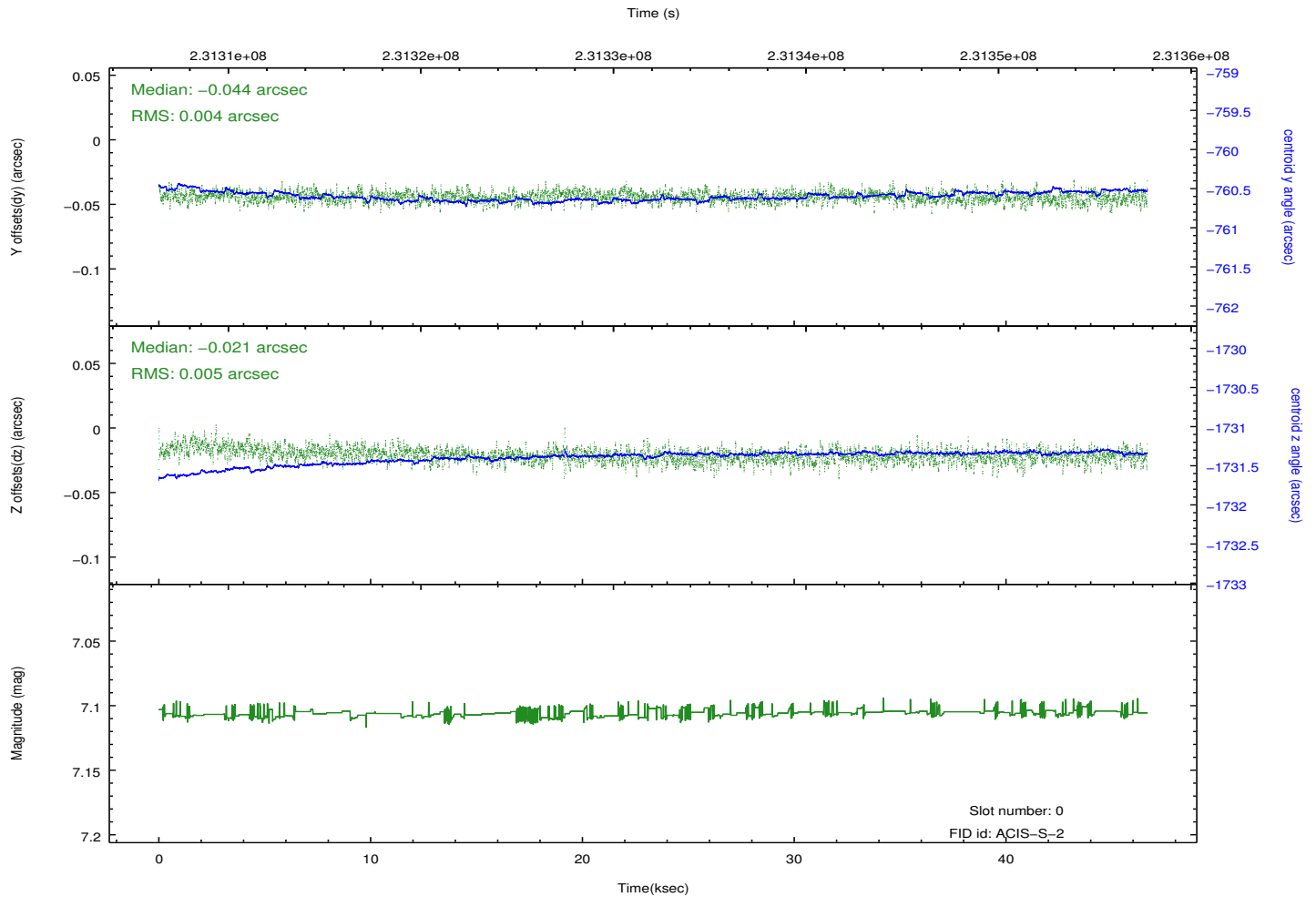
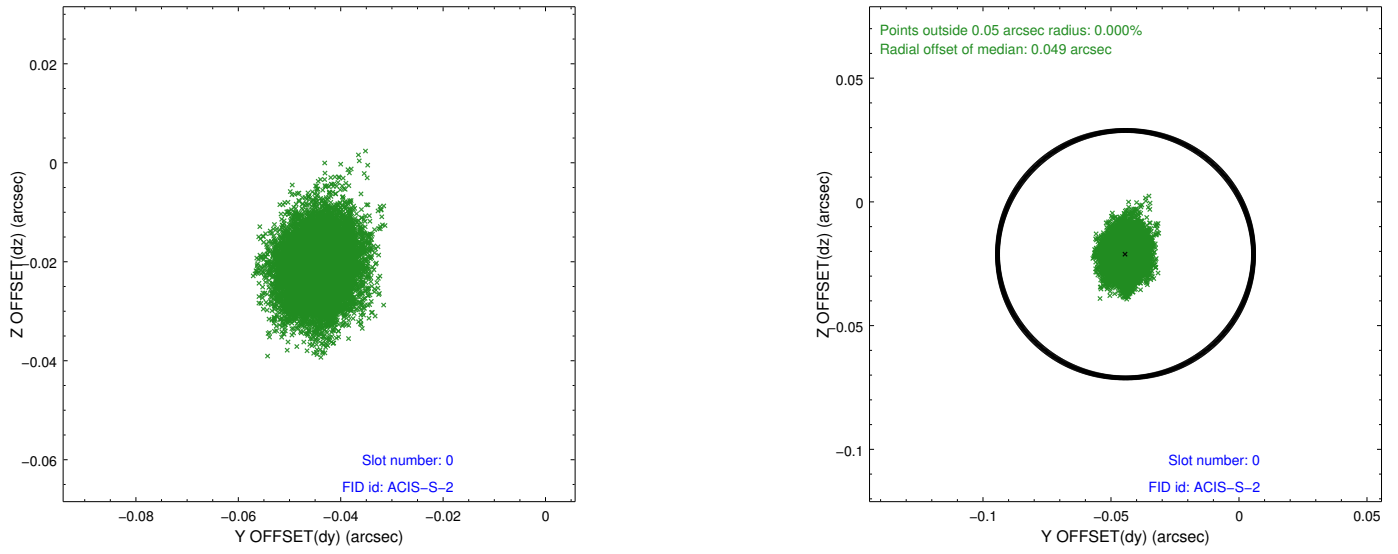


2.4.5 Slot 7

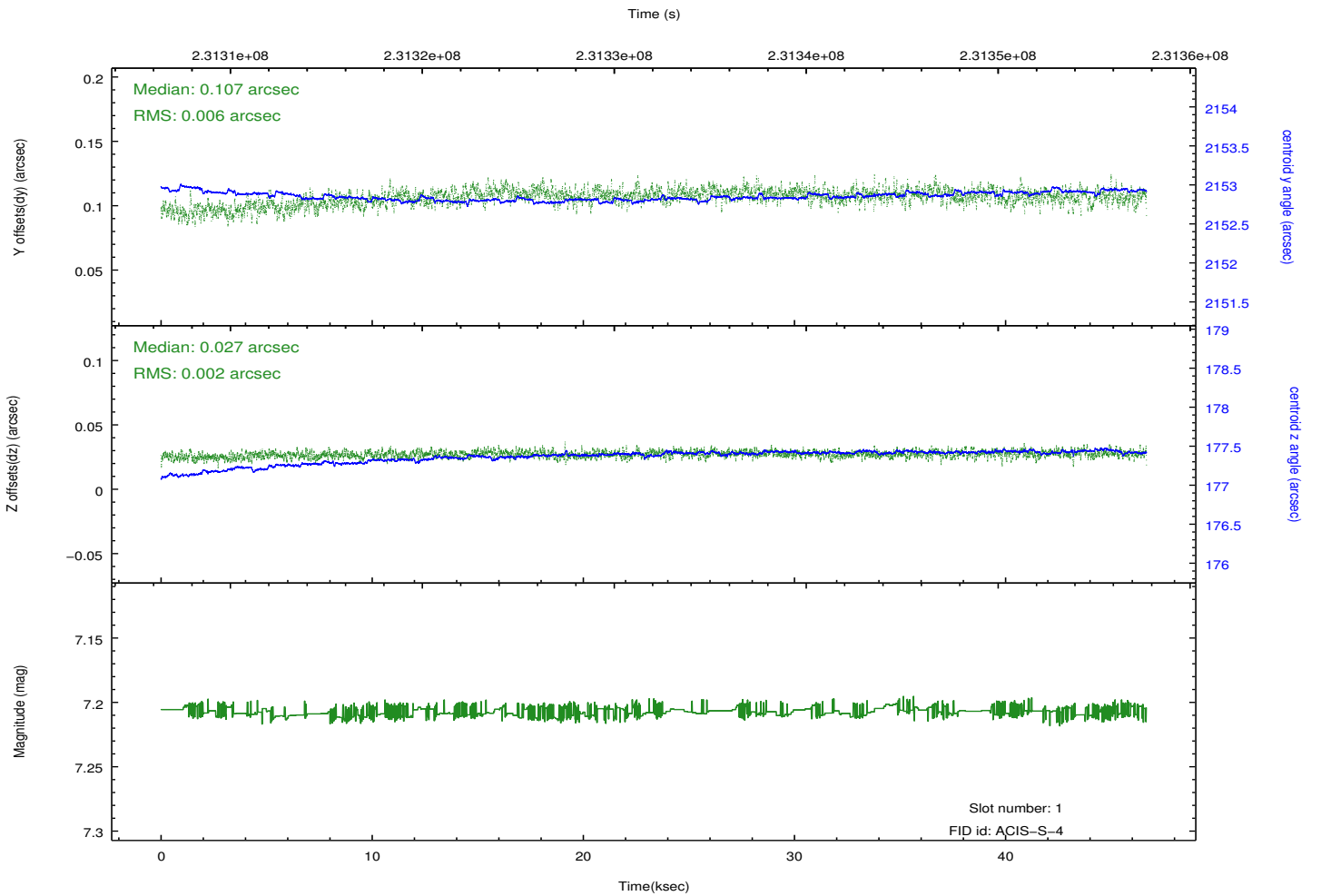
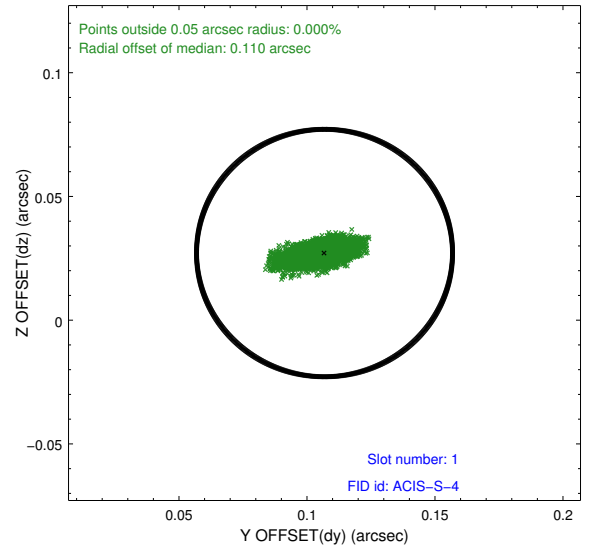
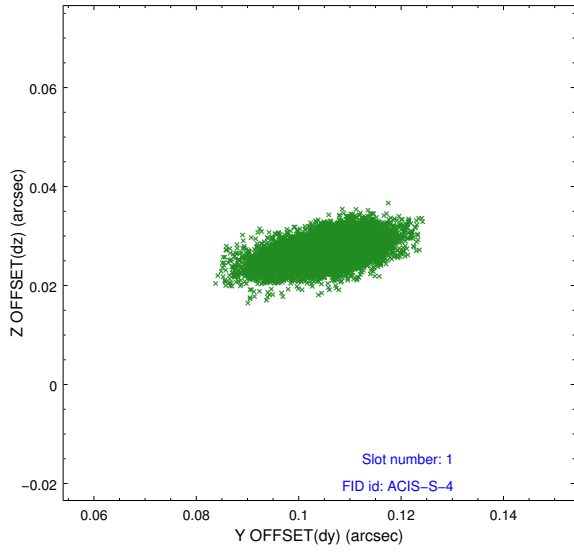


2.5 FID Slots

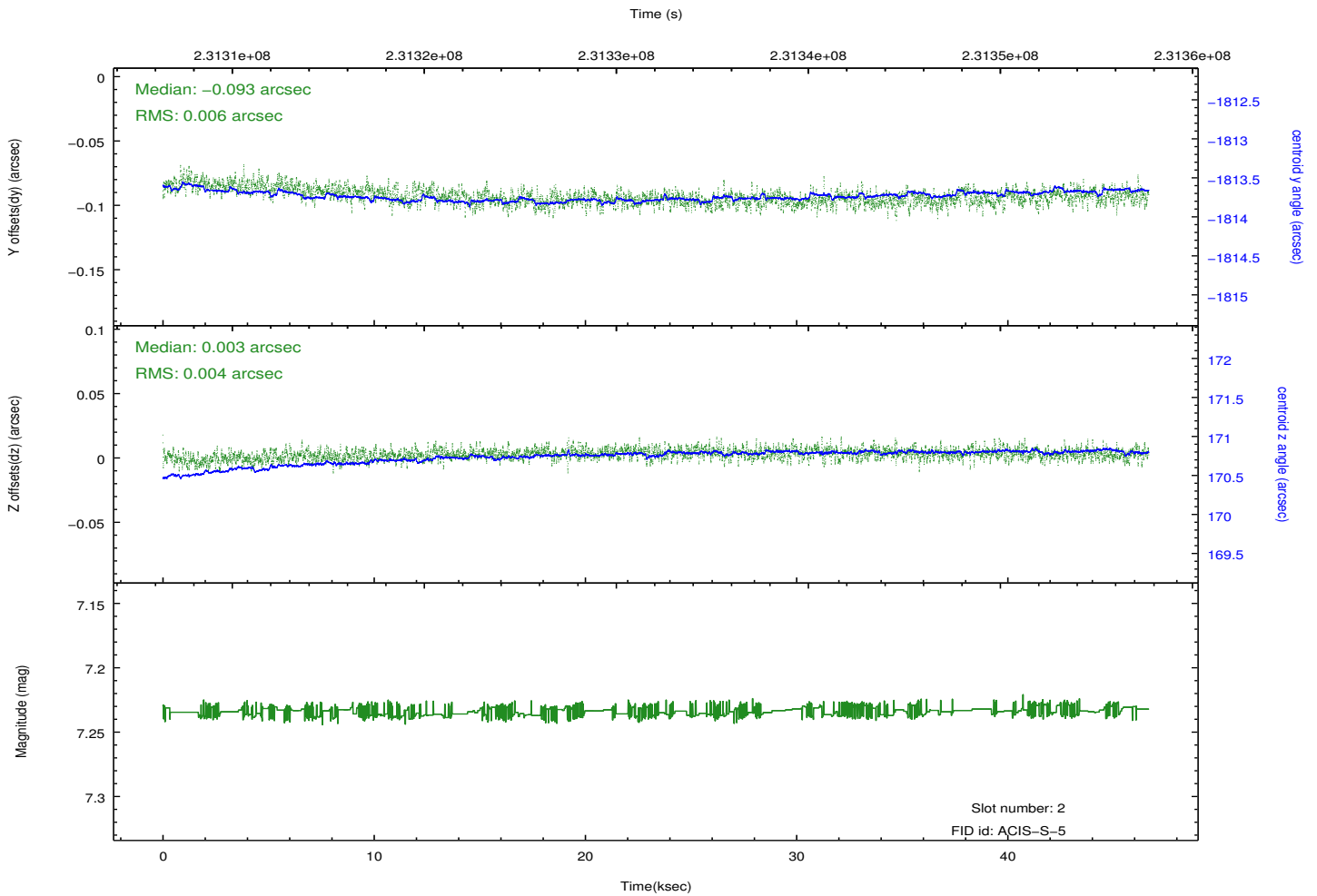
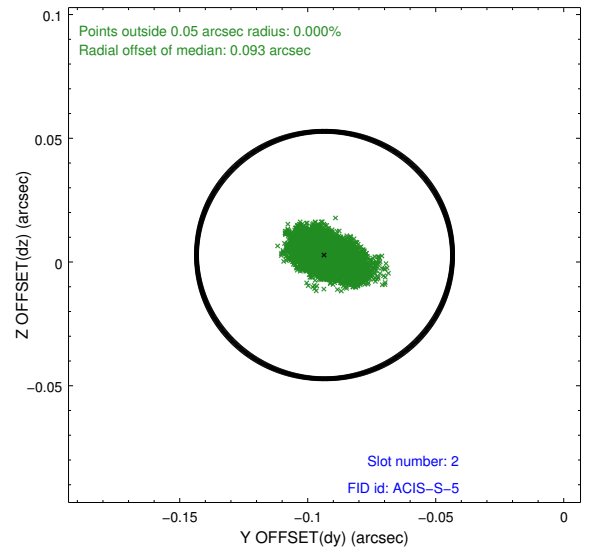
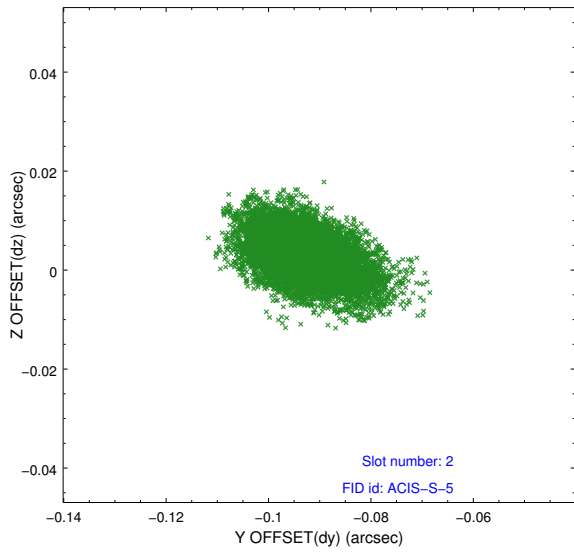
2.5.1 Slot 0



2.5.2 Slot 1



2.5.3 Slot 2



A Summary

A.1 Status

V&V Scientist	Jen Lauer
V&V Date (YYYY-MM-DD)	2013.01.15
V&V Edition	1
V&V Disposition and Status	OK
V&V Charge Time	46.67519

A.2 Comments