

V&V Reference Report

L2 ASCDS Version : 10.9.1

Observation 5928 - L2 Version 5
Chandra X-Ray Center

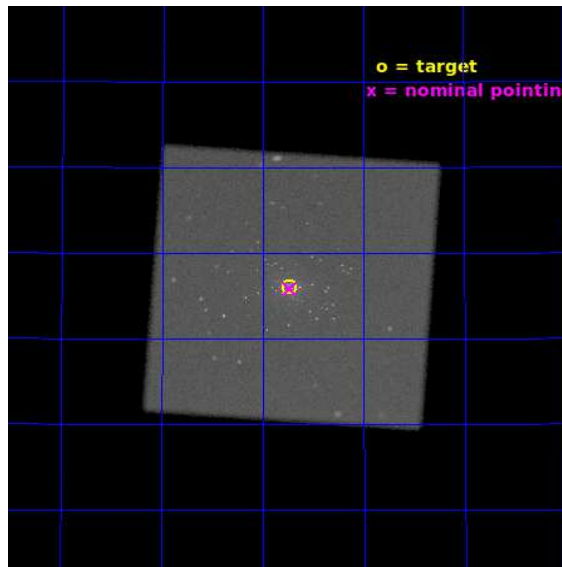
L2 Processing Date : Oct 6 2020

Contents

1	Front	2
2	OBI	3
2.1	OBI	3
2.1.1	Images	3
2.1.2	Parameters	4
2.1.3	Events	4
2.2	Compared Parameters	5
2.3	Aspect	6
2.4	Star Slots	9
2.4.1	Slot 3	9
2.4.2	Slot 4	10
2.4.3	Slot 5	11
2.4.4	Slot 6	12
2.4.5	Slot 7	13
2.5	FID Slots	14
2.5.1	Slot 0	14
2.5.2	Slot 1	15
2.5.3	Slot 2	16
A	Summary	17
A.1	Status	17
A.2	Comments	17

1 Front

seq_num	600447	Sequence number
obs_id	5928	Observation id
title	M31* - The Nearest Extra-galactic SuperMassive Black Hole	Proposal
observer	Dr. Michael Garcia	Principal investigator
object	M31*	Source name
ra_targ	10.685	Observer's specified target RA [deg]
dec_targ	41.268972	Observer's specified target Dec [deg]
ra_nom	10.683195483496	Nominal RA [deg]
dec_nom	41.264394040385	Nominal Dec [deg]
roll_nom	319.0494416993	Nominal Roll [deg]
revision	5	Processing version of data
ontime	45156.377044082	[s]
livedtime	44855.472766618	Ontime multiplied by DTCOR
l2events	1673515	Number of level 2 events

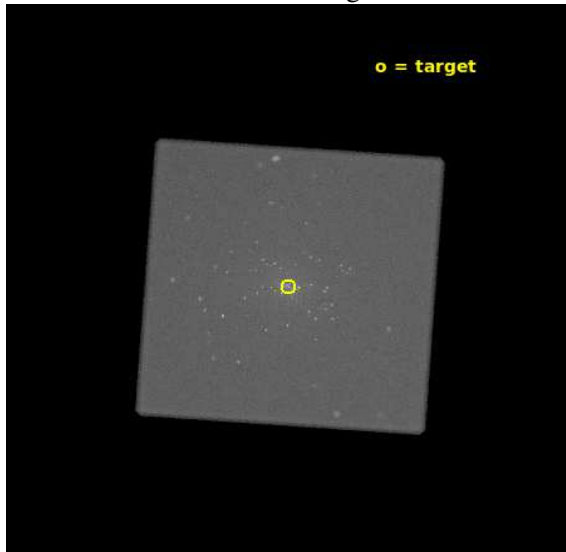


2 OBI

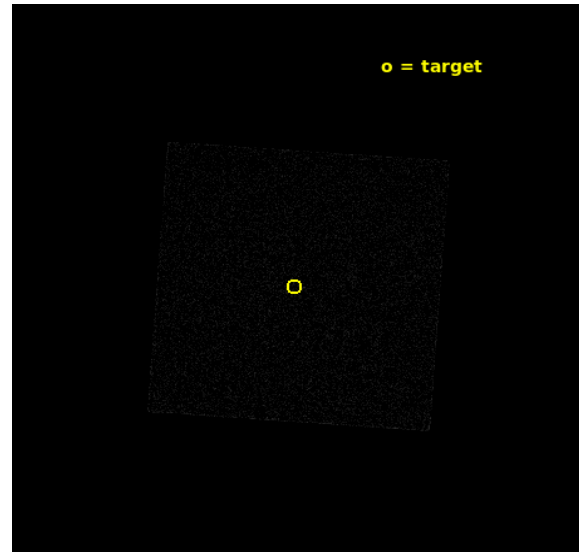
2.1 OBI

2.1.1 Images

Level 1 Image



Level 1 Bad Events



2.1.2 Parameters

obi_num	0	Obi number	sched_exp_time	45000.000000	[s] Scheduled observation exposure time
ascdsver	10.9.1	Processing system revision	ontime	45156.377044082	[s]
caldbver	4.9.2	 	l1events	2549409	Number of level 1 events
date	2020-10-06T22:17:40	Date and time of file creation			
revision	5	Processing version of data			

2.1.3 Events

Level 1 Events

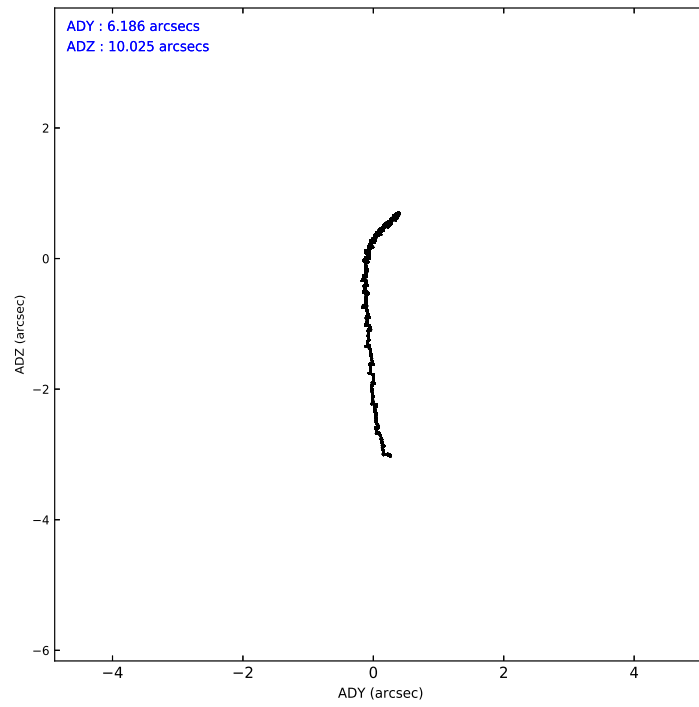
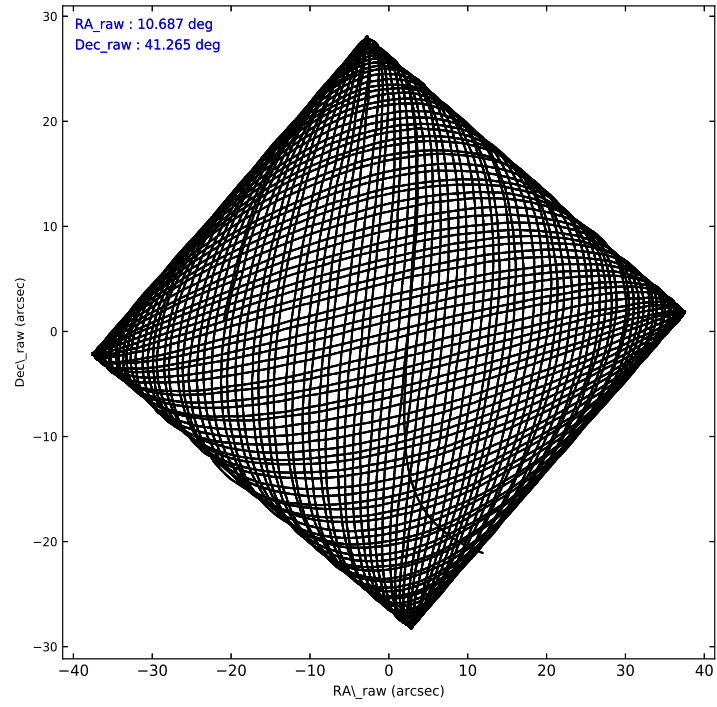
	segment 0
level 1 events	2549409
rejected events	108486
rejected %	4%

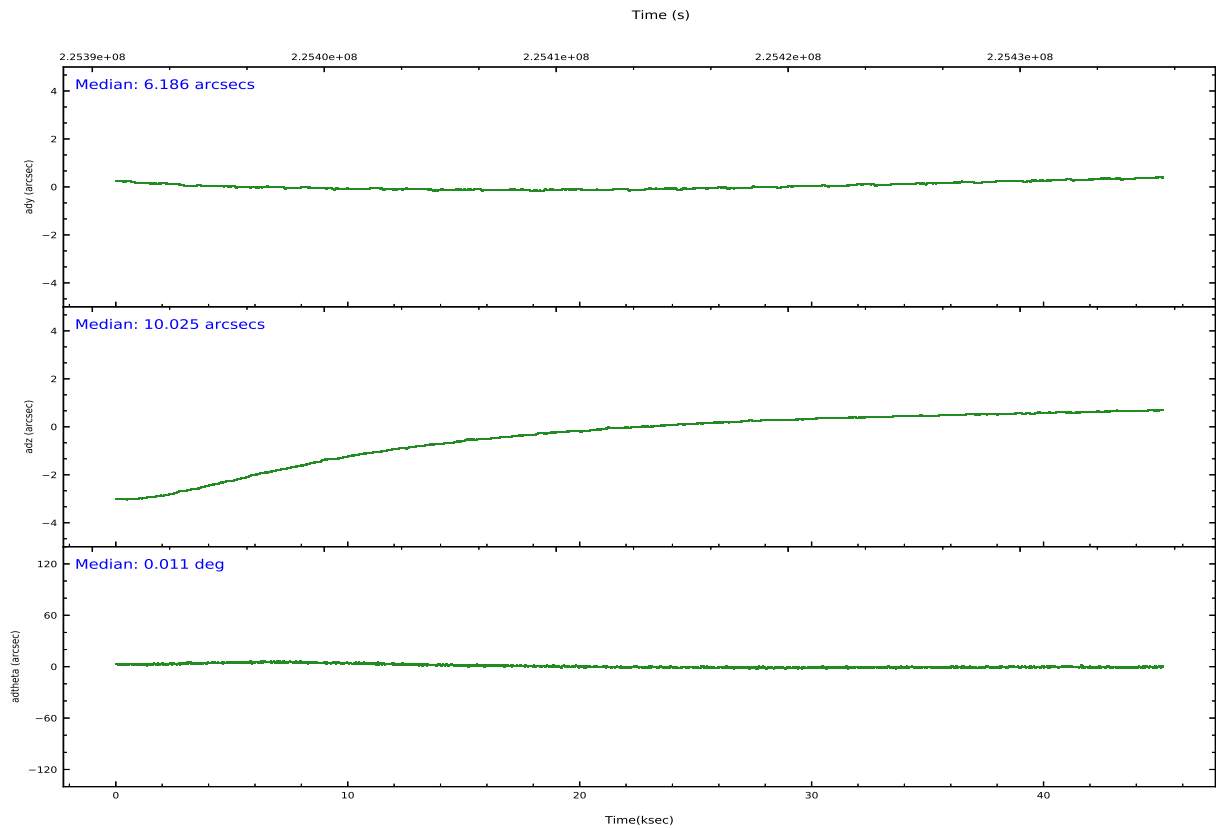
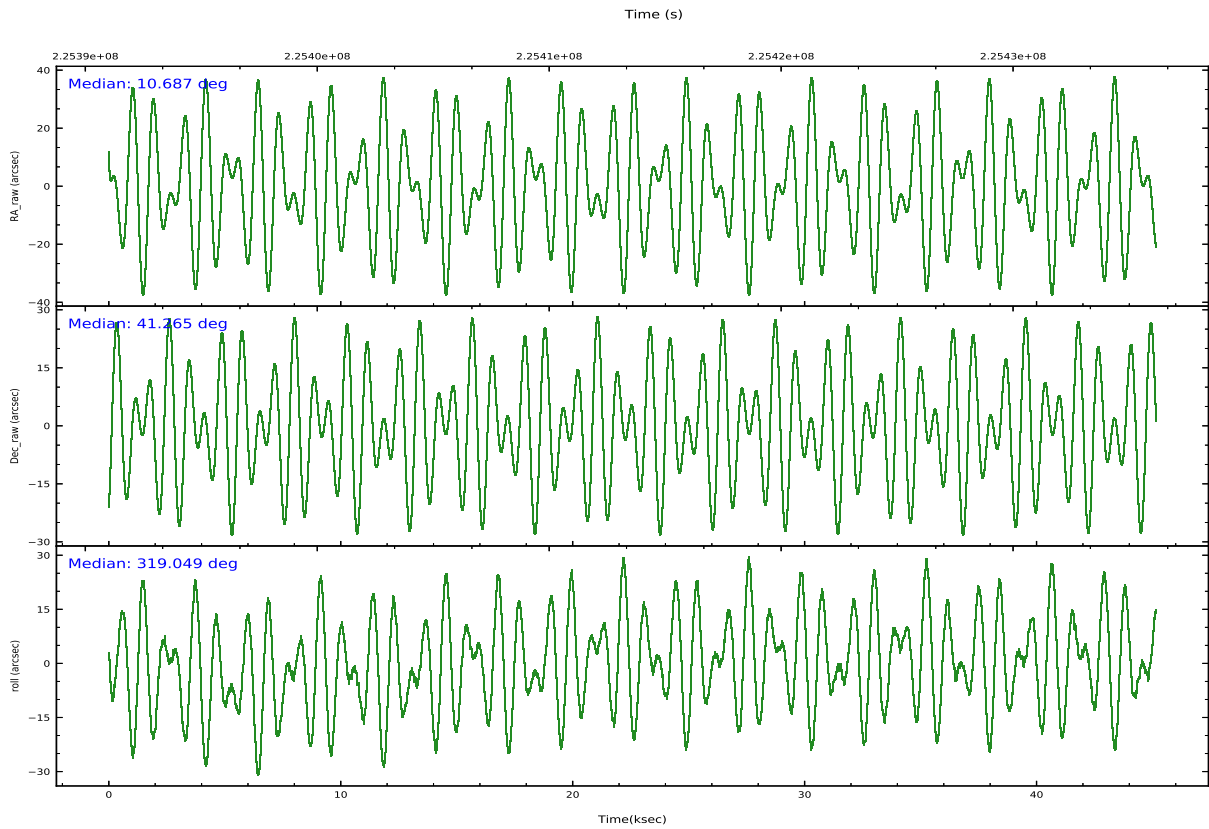
2.2 Compared Parameters

Parameter	Planned	Actual
Instrument	HRC	HRC
Detector	HRC-I	HRC-I
Grating	NONE	NONE
Data mode	OBSERVING	OBSERVING
Observation mode	POINTING	POINTING
[deg] Pointing RA	10.651908	10.683195483496
[deg] Pointing Dec	41.269760	41.264394040385
[deg] Pointing Roll	319.187003	319.0494416993
[mm] SIM focus pos	-1.040293	-1.038866356238299
[mm] SIM defocus	0	0.001426264420575141
[mm] SIM translation stage pos	126.985494	126.9829799899862
[mm] SIM translation stage offset	0	0.002508901615314585
[s] Observation start time (MET)	225391168.184000	225389870.96367
Observation start date	2005-02-21T16:38:24	2005-02-21T16:17:50
[s] Observation end time (MET)	225436168.184000	225437142.42831
Observation end date	2005-02-22T05:08:24	2005-02-22T05:25:42

Parameter	Planned	Actual
Obspar version number	8	8
Obspar file type	PREDICTED	ACTUAL
Obspar update status	NONE	UPDATED

2.3 Aspect





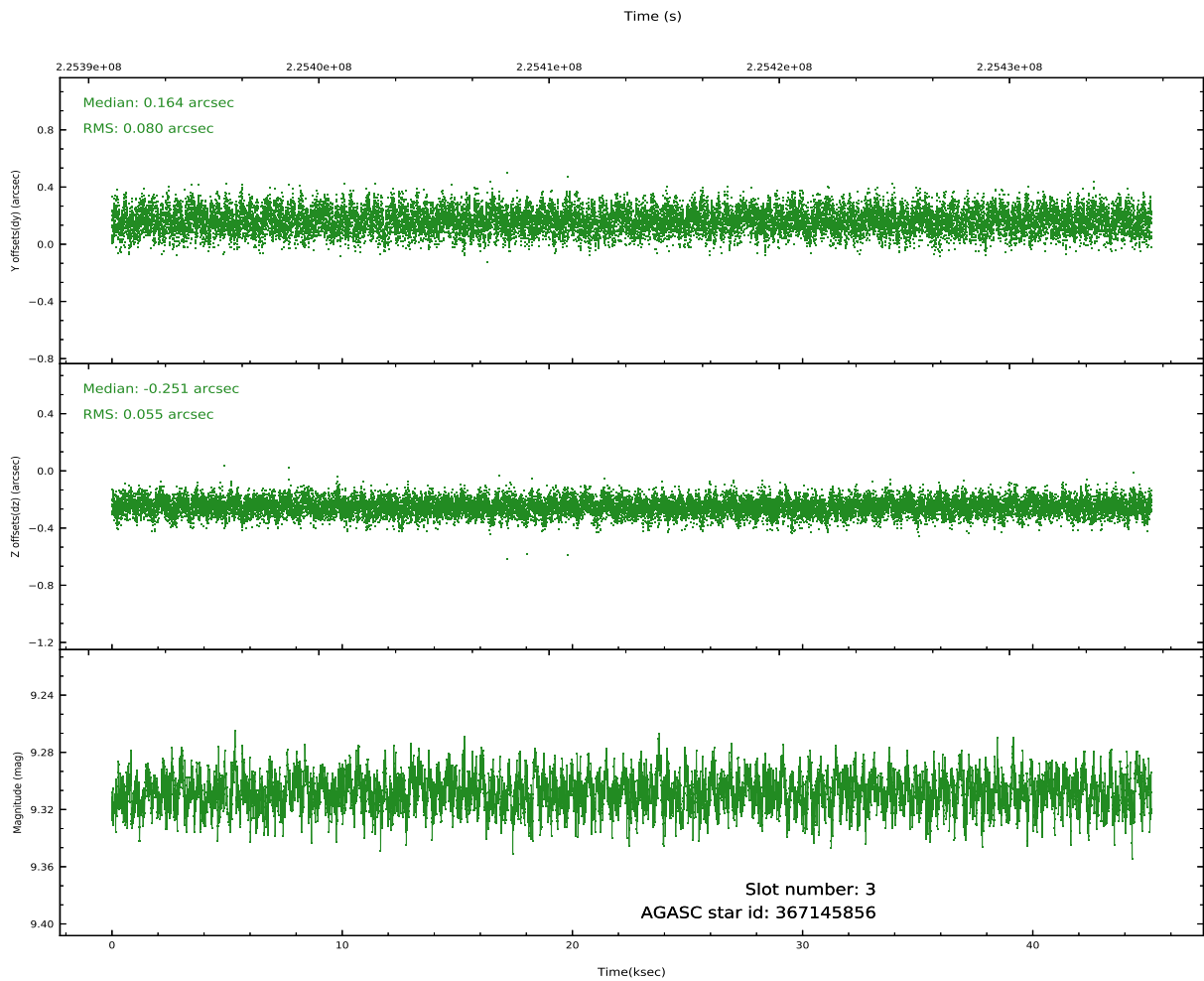
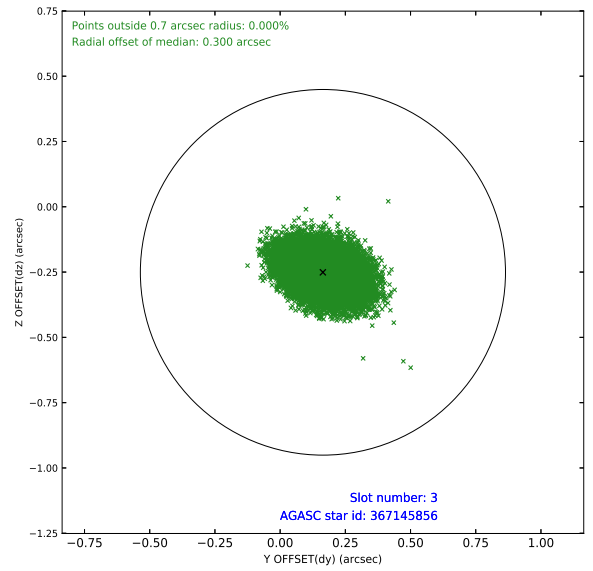
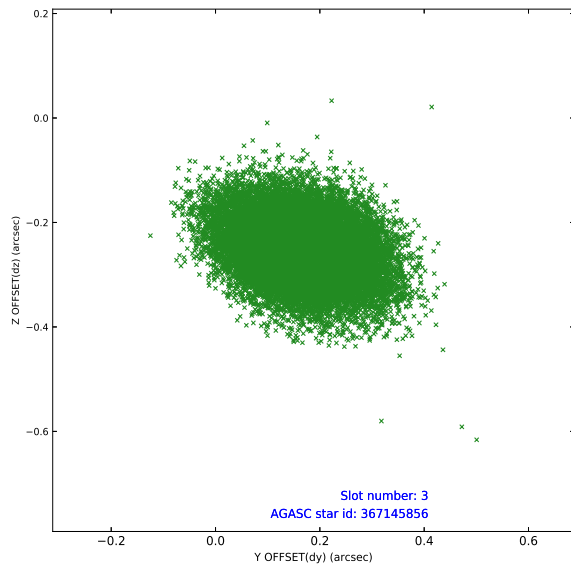
Slot Statistics

slot	status	used	id	mag	n_pts	frac_pts	med_dy	med_dz	dr1	dr2	ra	dec	mean_y	mea
0	FID		HRC-I-1	6.98	11014	1.000	-0.041	-0.082	0.018	0.050	0.000000	0.000000	-761.90	-1297
1	FID		HRC-I-2	7.02	11013	1.000	0.075	-0.052	0.021	0.047	0.000000	0.000000	850.78	-1299
2	FID		HRC-I-4	7.02	11014	1.000	0.085	0.040	0.014	0.036	0.000000	0.000000	1281.20	1004
3	GUIDE	used	367145856	9.31	22014	1.000	0.164	-0.251	0.102	0.170	10.744946	40.402085	2235.40	-2197
4	GUIDE	used	367146616	8.86	22022	1.000	0.005	0.052	0.064	0.105	11.418645	41.190163	1753.69	1147
5	GUIDE	used	367148872	7.22	22029	1.000	-0.092	-0.134	0.072	0.110	10.505940	40.688258	1067.24	-1844
6	GUIDE	used	367663272	9.29	22017	1.000	-0.158	0.110	0.082	0.134	10.656279	41.699429	-1002.17	1177
7	GUIDE	used	367657272	8.46	22019	1.000	0.080	0.223	0.062	0.100	11.834471	41.298907	2337.99	2186

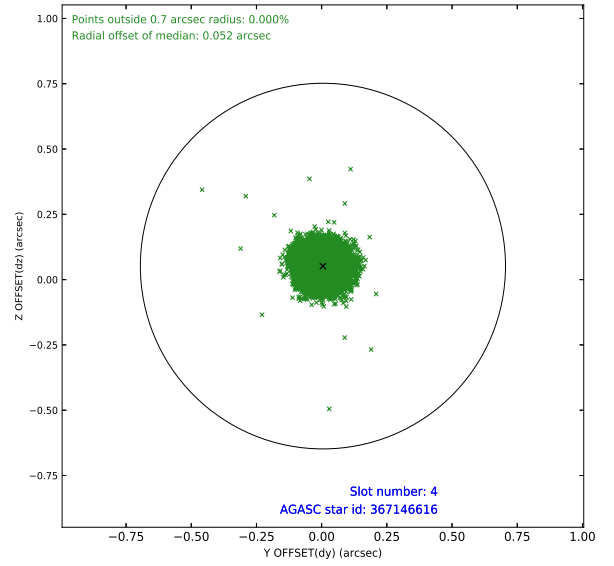
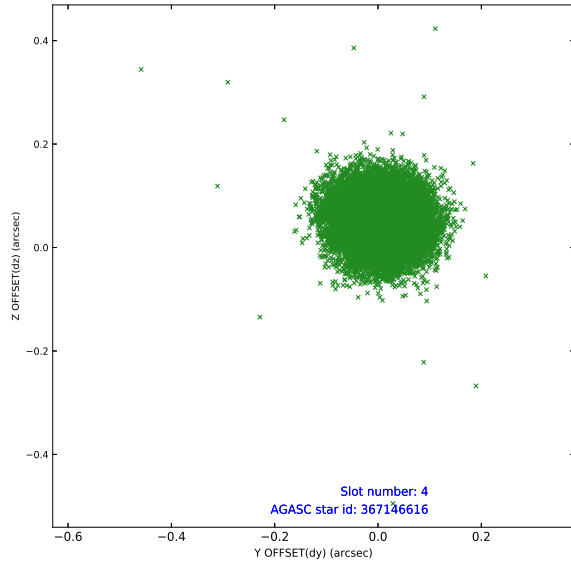
∞

2.4 Star Slots

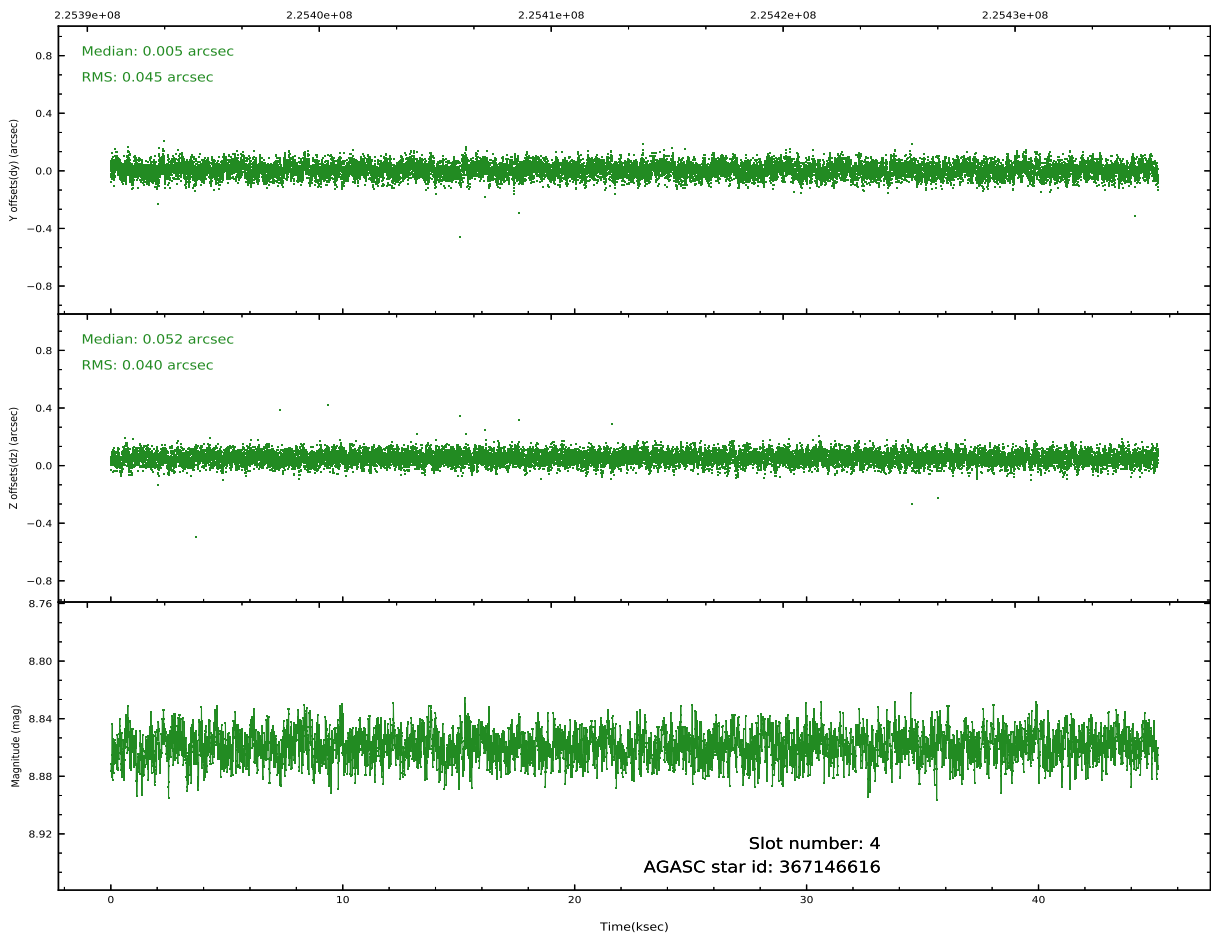
2.4.1 Slot 3



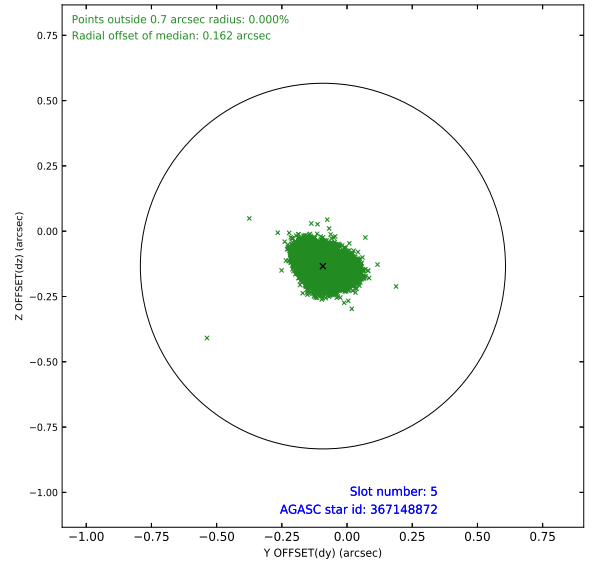
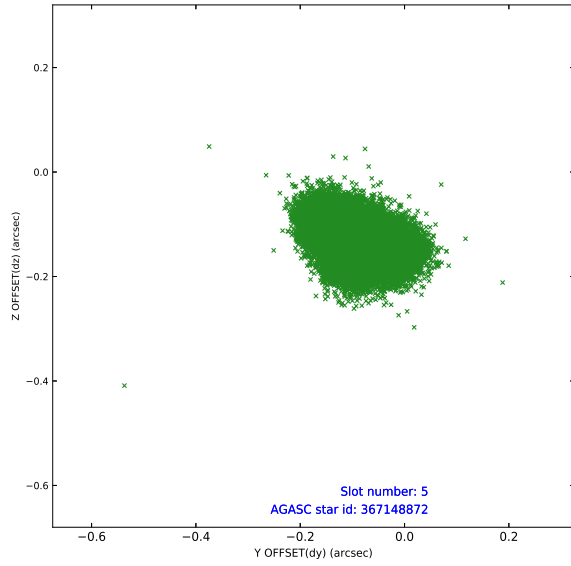
2.4.2 Slot 4



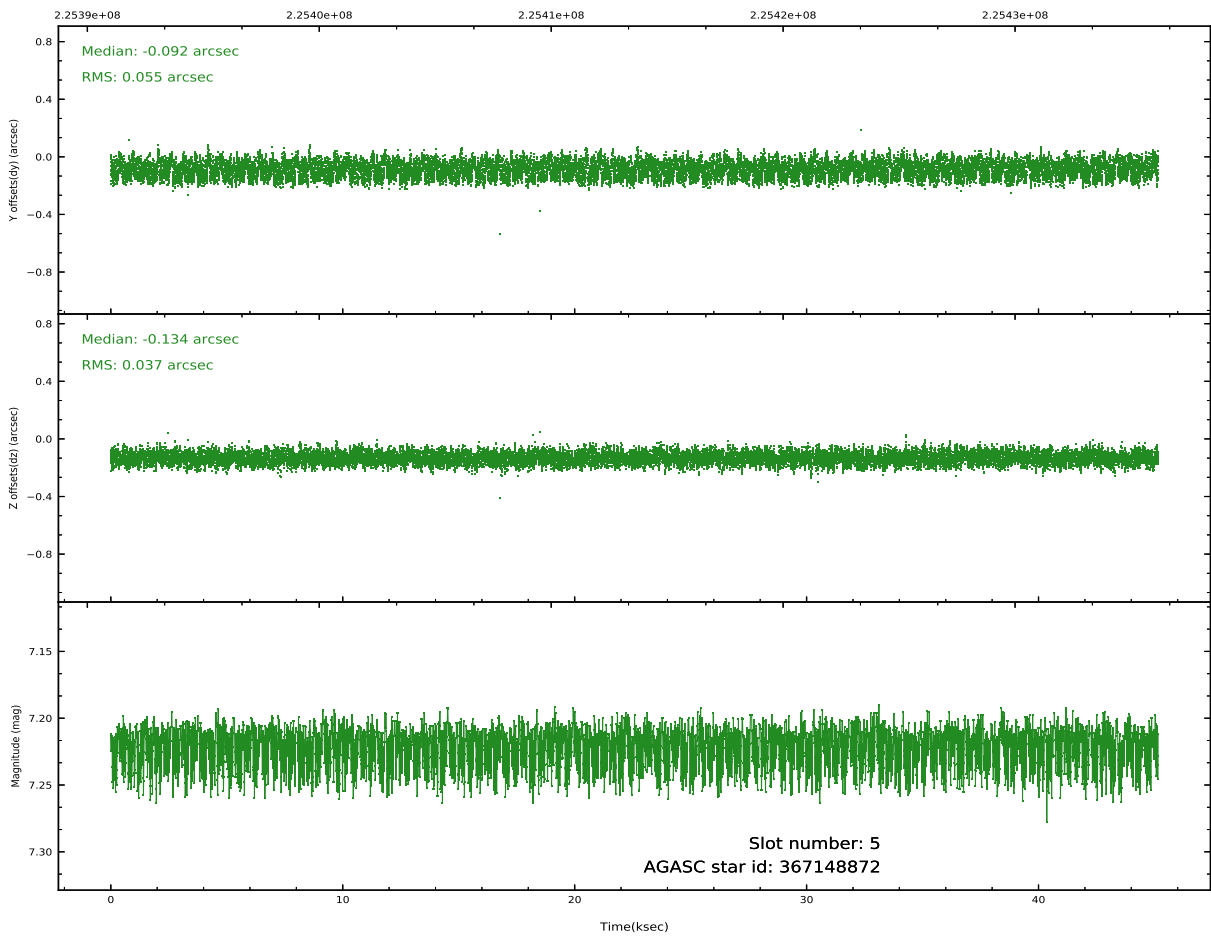
Time (s)



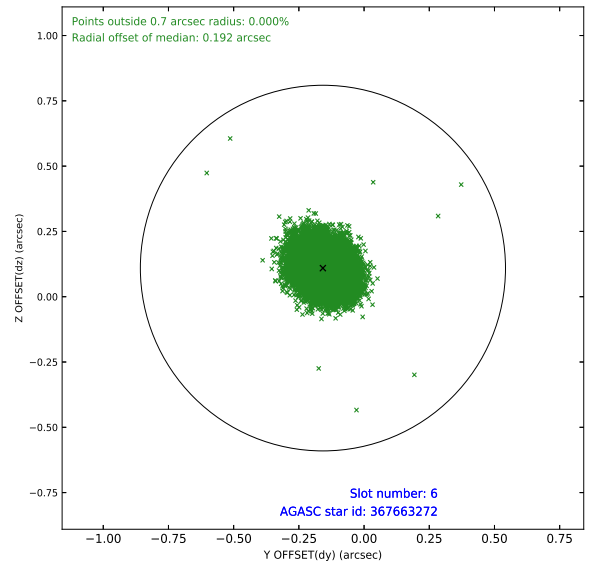
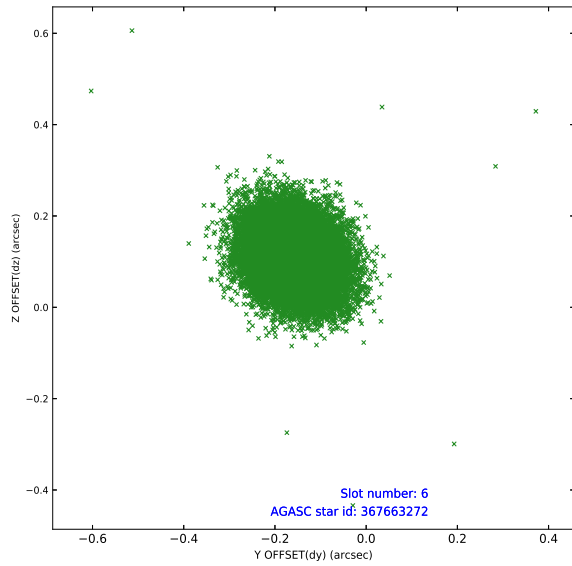
2.4.3 Slot 5



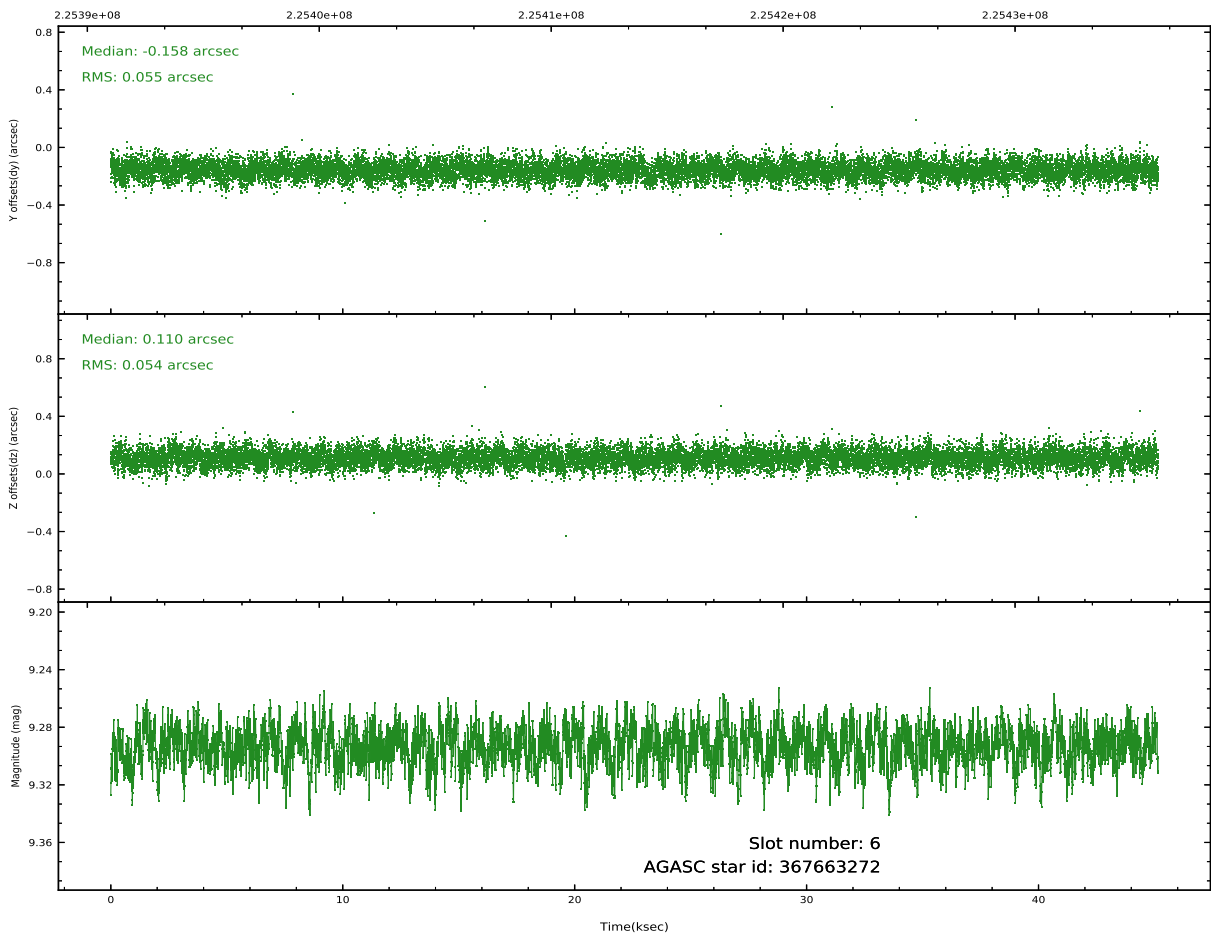
Time (s)



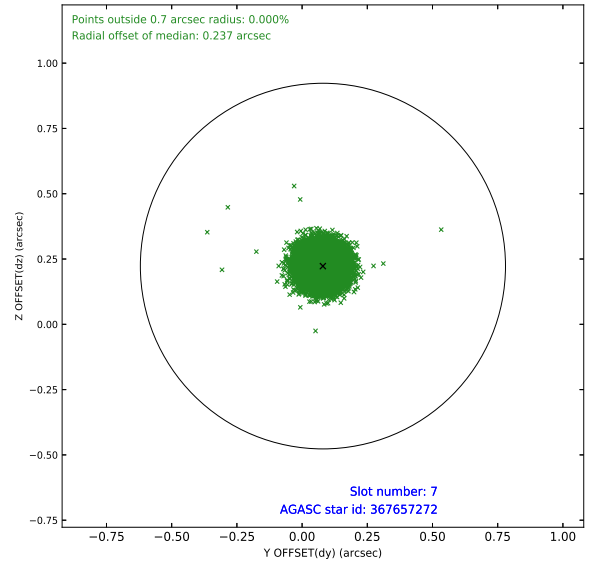
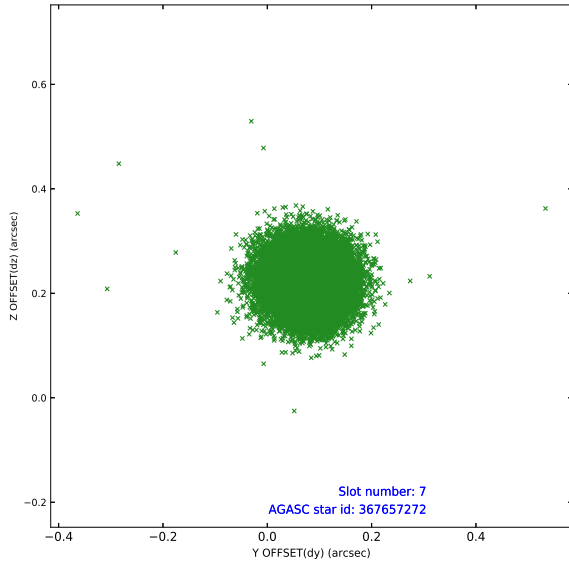
2.4.4 Slot 6



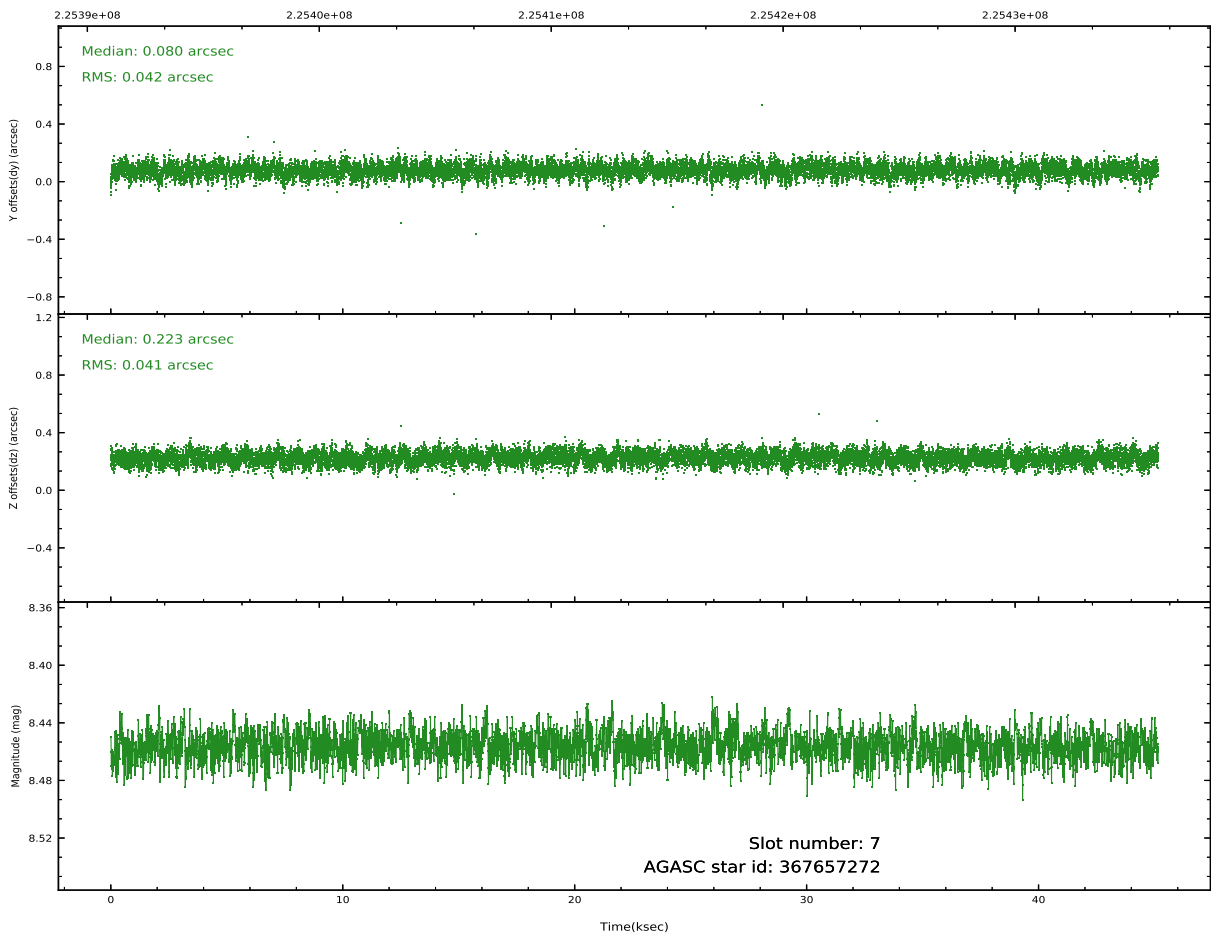
Time (s)



2.4.5 Slot 7

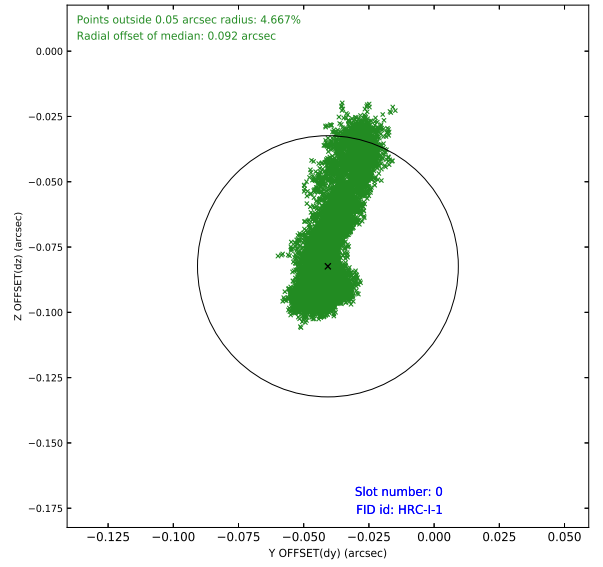
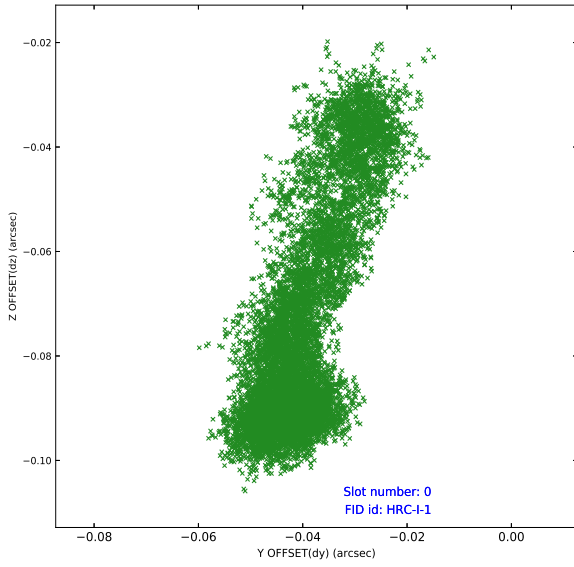


Time (s)

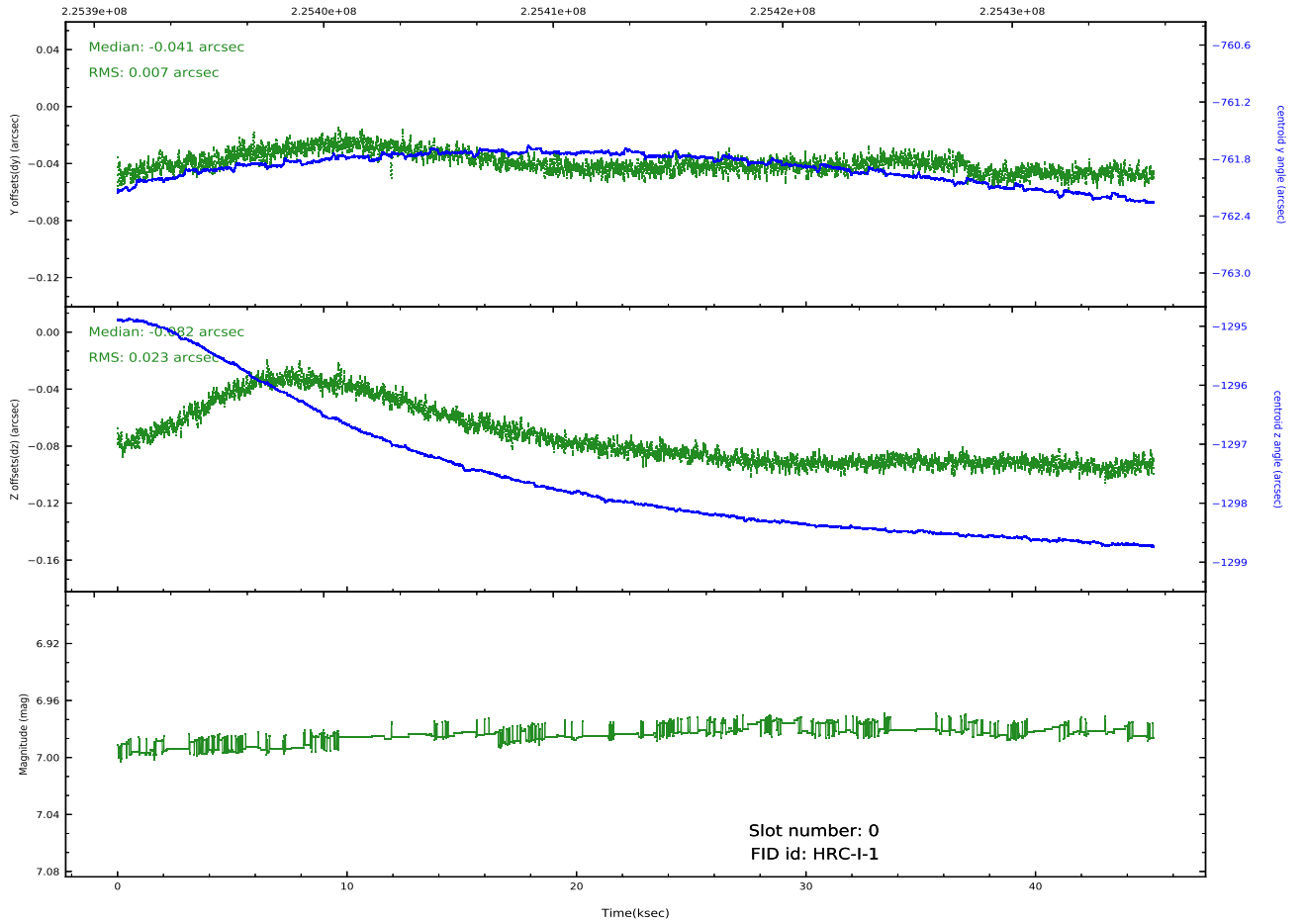


2.5 FID Slots

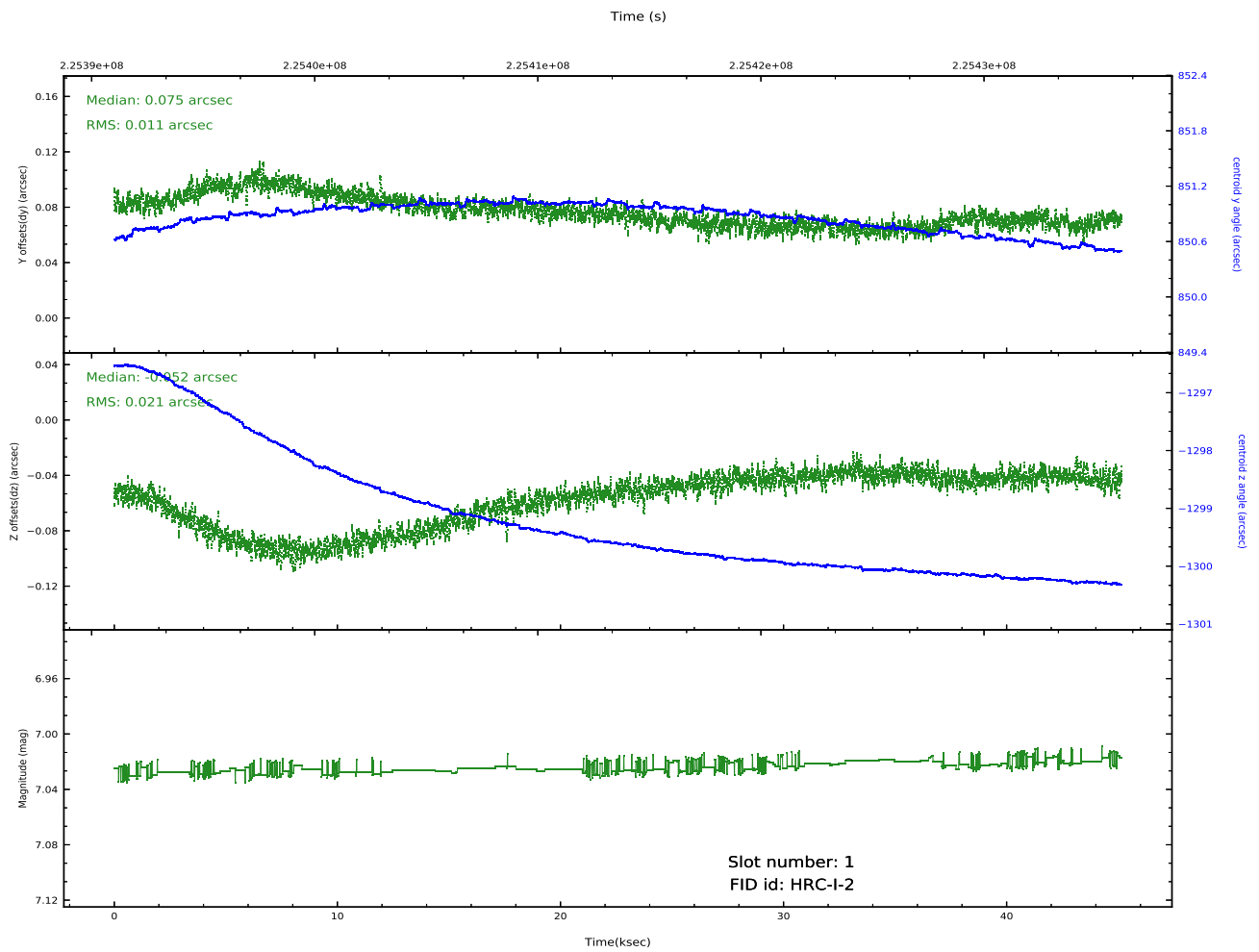
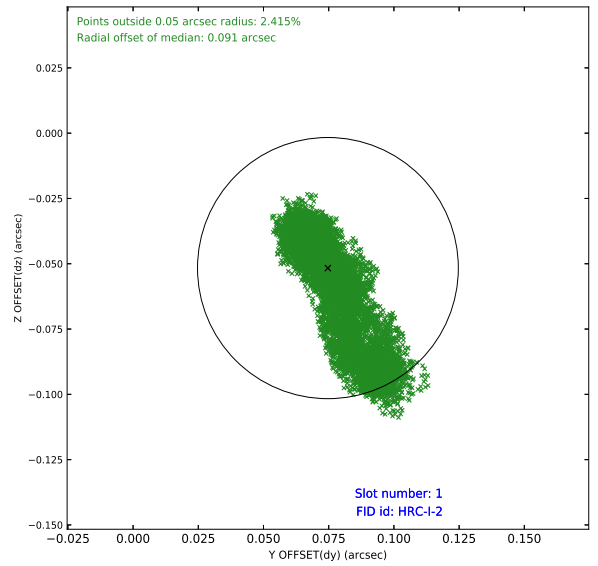
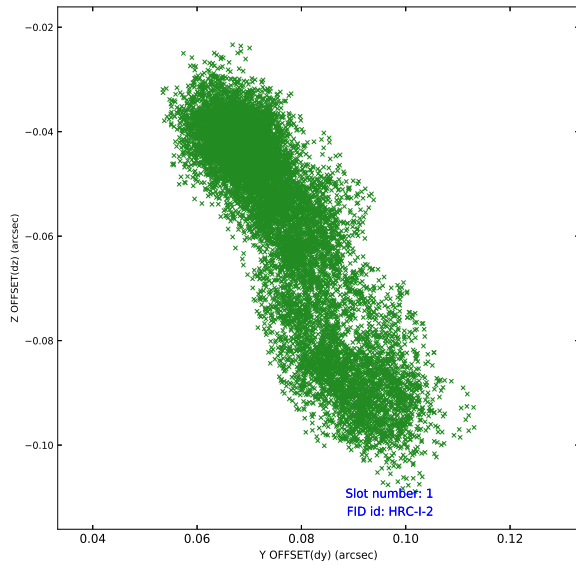
2.5.1 Slot 0



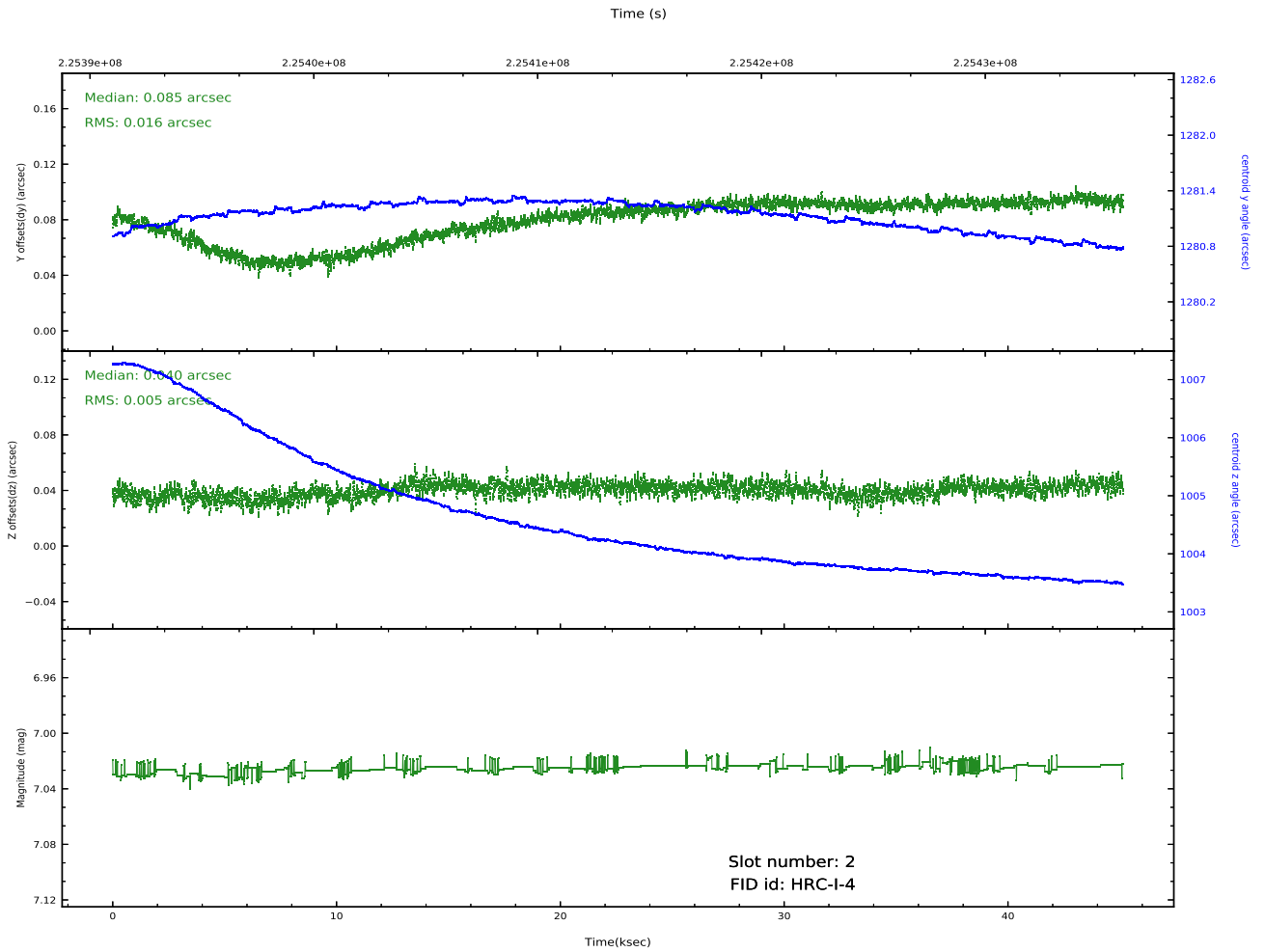
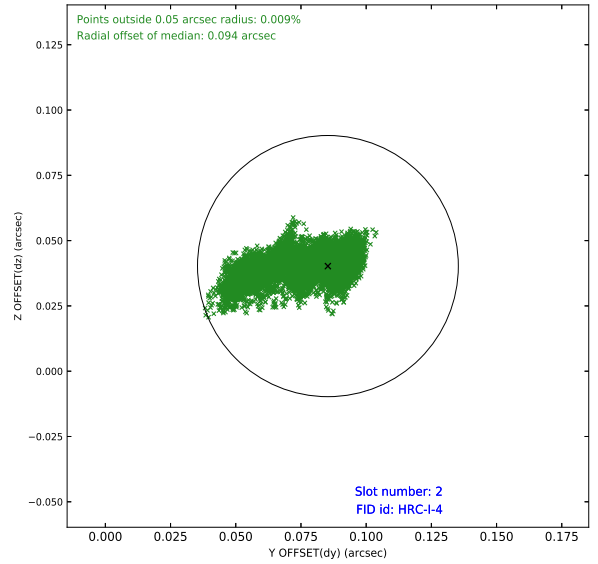
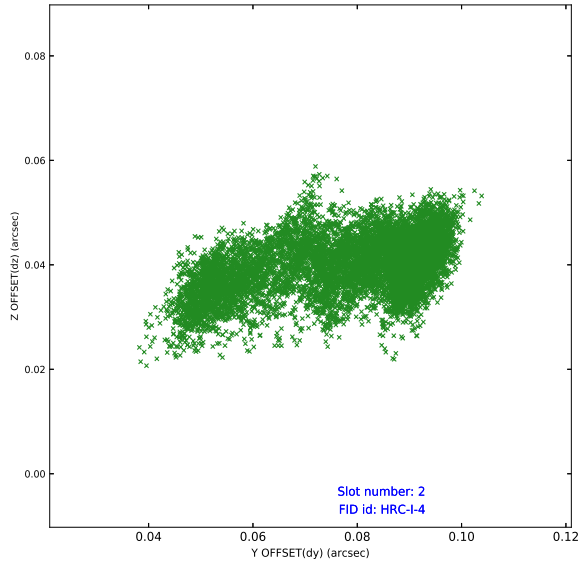
Time (s)



2.5.2 Slot 1



2.5.3 Slot 2



A Summary

A.1 Status

V&V Scientist	Beth Sundheim
V&V Date (YYYY-MM-DD)	2020.10.07
V&V Edition	1
V&V Disposition and Status	OK
V&V Charge Time	45.15637

A.2 Comments

Joint proposal with NRAO.