

V&V Reference Report

L2 ASCDS Version : 7.6.7.2

Observation 60088 - L2 Version 001
Chandra X-Ray Center

L2 Processing Date : Apr 25 2006

Contents

1	Front	2
2	OBI	3
2.1	OBI	3
2.1.1	Images	3
2.1.2	Bias	3
2.1.3	Parameters	4
2.1.4	Events	4
2.2	Compared Parameters	5
2.3	Aspect	6
2.4	Star Slots	8
2.5	FID Slots	8
A	Summary	9
A.1	Status	9
A.2	Comments	9

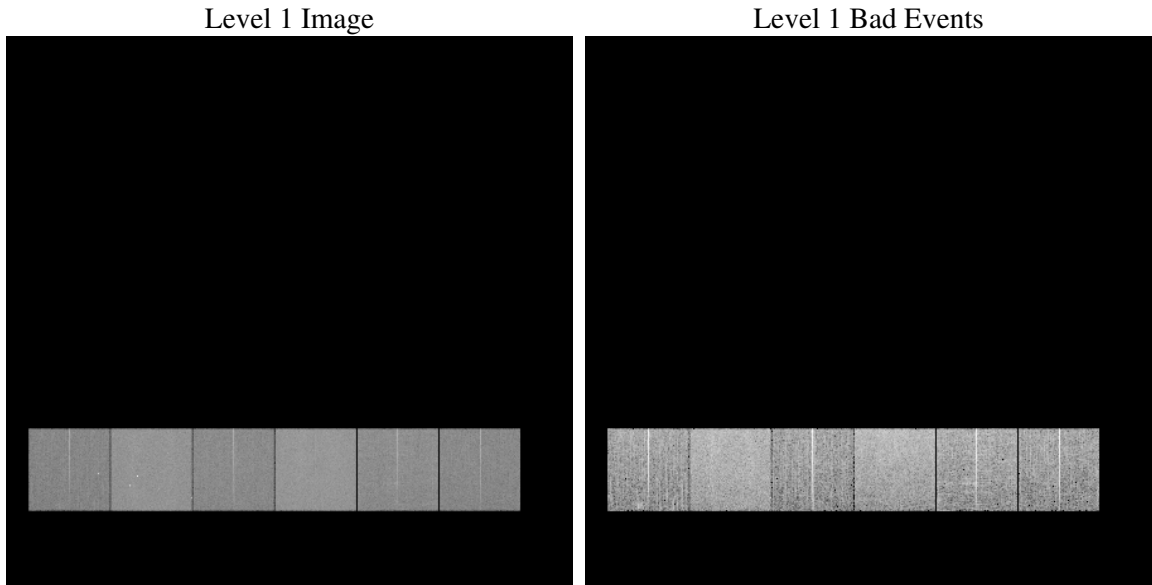
1 Front

seq_num	
obs_id	60088
title	ACIS-456789 diagnostics
observer	CHANDRA engineering request/realtime commanding
object	
dtcycle	0
cycle	P
ra_targ	0.0
dec_targ	0.0
ra_nom	331.02043552618
dec_nom	-19.978846821453
roll_nom	15.017893926708
revision	2
ontime	8278.3999691606
livetime	8173.573884097
ontime4	5575.4284488559
ontime5	8278.3999691606
ontime6	6071.29755041
ontime7	8278.3999691606
ontime8	6278.720226258
ontime9	5896.2861307263
l2events	1116836

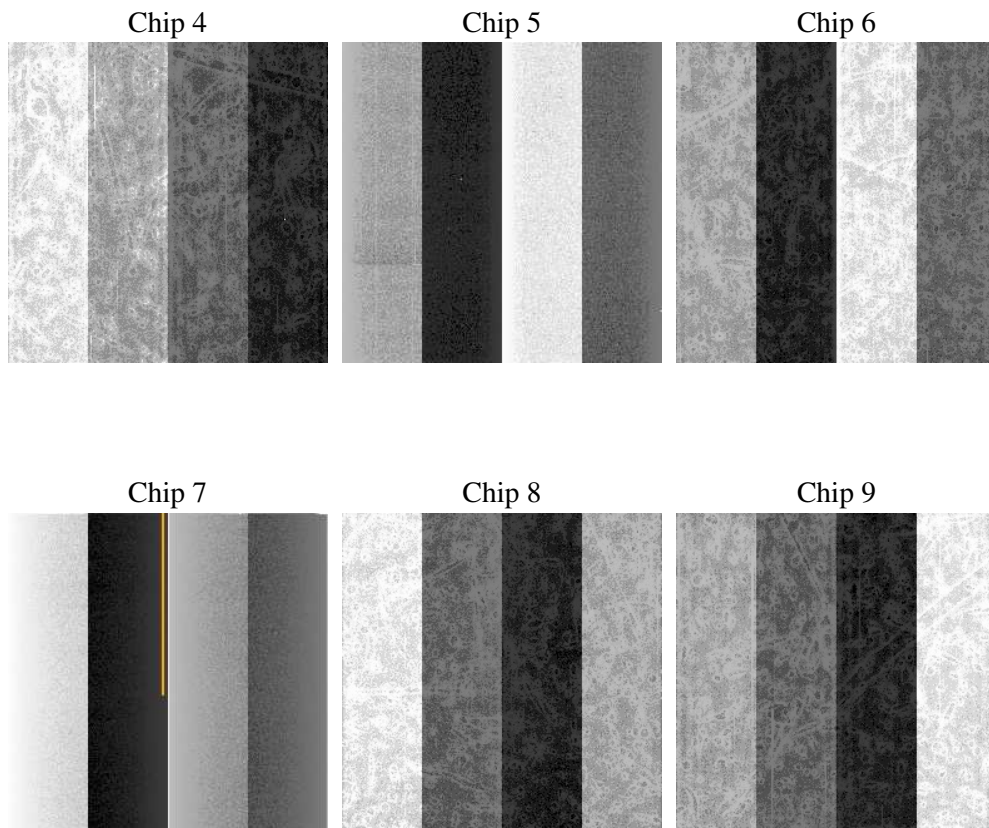
2 OBI

2.1 OBI

2.1.1 Images



2.1.2 Bias



2.1.3 Parameters

obi_num	1
ascdsver	7.6.7.2
caldbver	3.2.1
date	2006-04-25T08:42:58
revision	2

sched_exp_time	0.0
ontime	8280.7650384009
ontime4	5577.7935180962
ontime5	8280.7650384009
ontime6	6073.6626196504
ontime7	8280.7650384009
ontime8	6281.0852954984
ontime9	5898.6511999667
l1events	1497734

2.1.4 Events

	ccd 4	ccd 5	ccd 6	ccd 7	ccd 8	ccd 9
level 1 events	201887	293761	227718	313524	244941	215903
rejected events	46421	64717	45284	61554	51973	45323
rejected %	22%	22%	19%	19%	21%	20%

	ccd 4	ccd 5	ccd 6	ccd 7	ccd 8	ccd 9
grade 0 events	89884	26770	99052	43456	105095	94005
	44%	9%	43%	13%	42%	43%
grade 1 events	691	128	540	126	595	591
	0%	0%	0%	0%	0%	0%
grade 2 events	24989	106496	31624	75860	33691	29337
	12%	36%	13%	24%	13%	13%
grade 3 events	10273	7572	11437	18057	12583	11056
	5%	2%	5%	5%	5%	5%
grade 4 events	10455	7245	11331	17793	12687	10894
	5%	2%	4%	5%	5%	5%
grade 5 events	2592	6577	2950	7418	3747	3170
	1%	2%	1%	2%	1%	1%
grade 6 events	19865	80961	28990	96804	28912	25288
	9%	27%	12%	30%	11%	11%
grade 7 events	43138	58012	41794	54010	47631	41562
	21%	19%	18%	17%	19%	19%

2.2 Compared Parameters

Parameter	Planned	Actual	Parameter	Planned	Actual
Instrument	ACIS	ACIS	Obspar format version number	6	6
Detector	ACIS-456789	ACIS-456789	Obspar file type	PREDICTED	ACTUAL
Grating	NONE	NONE	Obspar update status	NONE	UPDATED
Data mode	FAINT	FAINT	On-chip summing requested	N	N
Observation mode	SECONDARY	SECONDARY	Subarray requested	NONE	NONE
Pointing RA	0	331.0204355261799	Alternating exposures requested	N	N
Pointing Dec	0	-19.97884682145341	Primary exposure time	3.2	3.2
Pointing Roll	0.0	15.01789392670837			
SIM focus pos (mm)	-0.684267	-0.6828225247311905			
SIM defocus (mm)	0	0.8505141146731063			
SIM translation stage pos (mm)	-190.132523	250.466033080201			
SIM translation stage offset (mm)	0	-0.01005468664627074			
Observation start time	209299337.216249	209299336.19124			
Observation start date	2004-08-19T10:42:17	2004-08-19T10:42:16			
Observation end time	209322670.317287	209322669.29228			
Observation end date	2004-08-19T17:11:10	2004-08-19T17:11:09			
Read mode	TIMED	TIMED			

2.3 Aspect

2.4 Star Slots

2.5 FID Slots

A Summary

A.1 Status

V&V Scientist	Jen Lauer
V&V Date (YYYY-MM-DD)	2006.04.25
V&V Edition	1
V&V Disposition and Status	OK
V&V Charge Time	8.27839996

A.2 Comments