

# V&V Reference Report

## L2 ASCDS Version : 7.6.9

Observation 61568 - L2 Version 001  
Chandra X-Ray Center

L2 Processing Date : Dec 11 2006

## Contents

<b>1</b>	<b>Front</b>	<b>2</b>
<b>2</b>	<b>OBI</b>	<b>3</b>
2.1	OBI . . . . .	3
2.1.1	Images . . . . .	3
2.1.2	Bias . . . . .	3
2.1.3	Parameters . . . . .	4
2.1.4	Events . . . . .	4
2.2	Compared Parameters . . . . .	5
2.3	Aspect . . . . .	6
2.4	Star Slots . . . . .	8
2.5	FID Slots . . . . .	8
<b>A</b>	<b>Summary</b>	<b>9</b>
A.1	Status . . . . .	9
A.2	Comments . . . . .	9

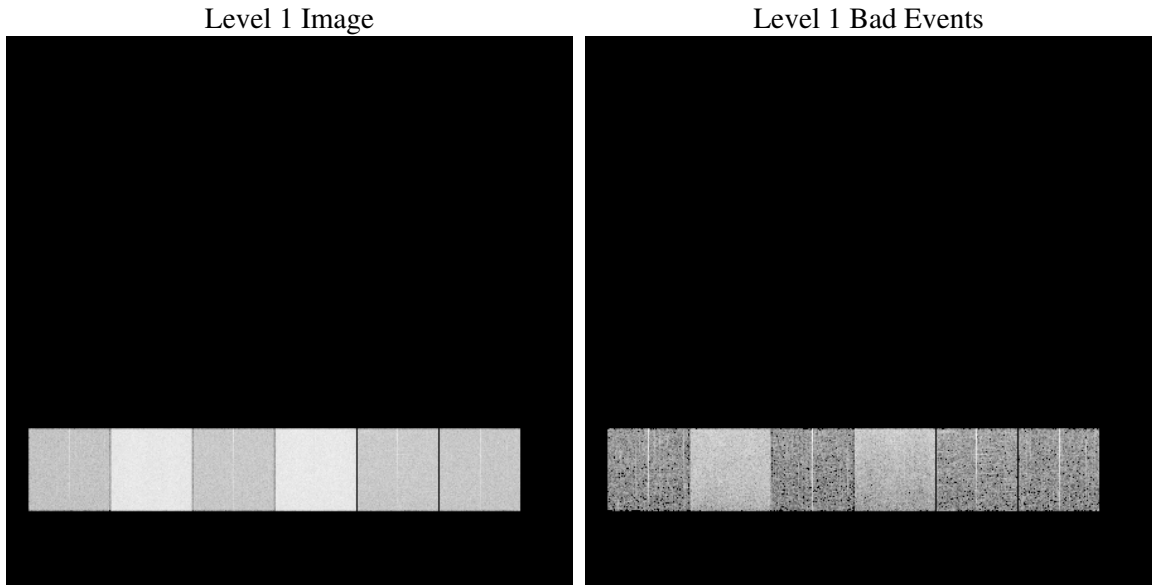
# 1 Front

seq_num	&#160
obs_id	61568
title	ACIS-456789 diagnostics
observer	CHANDRA engineering request/realtime commanding
object	&#160
dtcycle	0
cycle	P
ra_targ	0.0
dec_targ	0.0
ra_nom	160.00015969893
dec_nom	-20.028656716978
roll_nom	237.6090108234
revision	2
ontime	6016.9928095788
livetime	5940.8020236258
ontime4	2291.321107626
ontime5	6496.6534195989
ontime6	2471.3435178399
ontime7	6016.9928095788
ontime8	2502.0296672434
ontime9	2449.9680765867
l2events	1299692

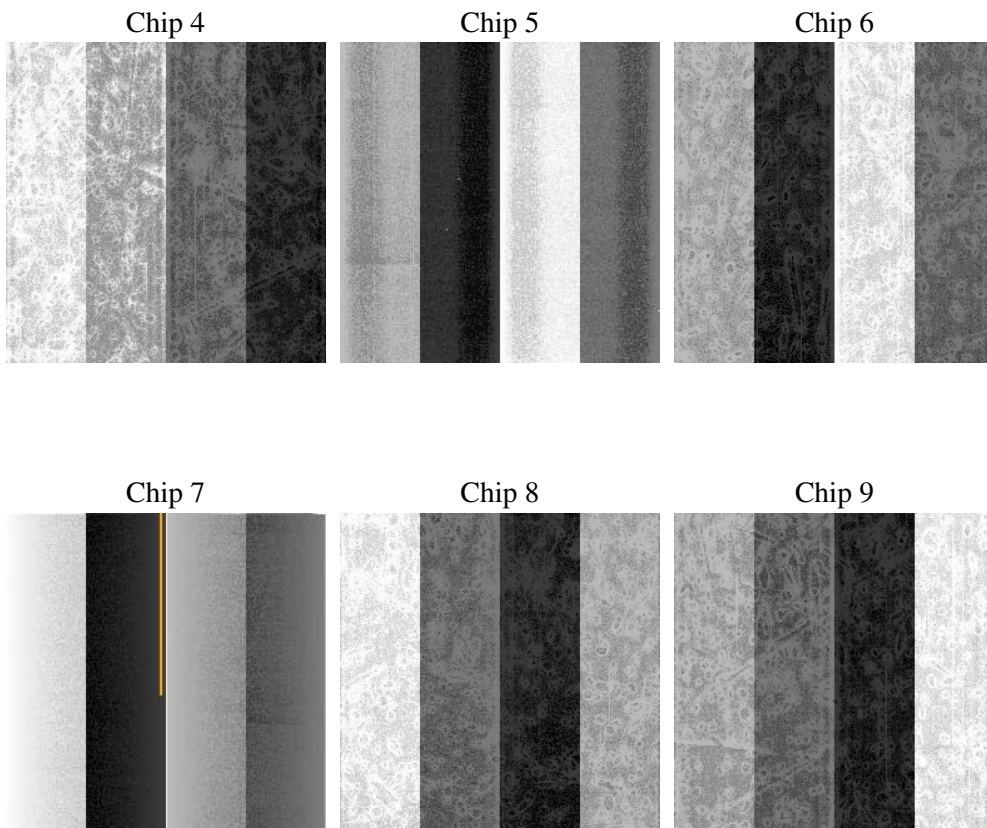
## 2 OBI

### 2.1 OBI

#### 2.1.1 Images



#### 2.1.2 Bias



### 2.1.3 Parameters

obi_num	0
ascdsver	7.6.9
caldbver	3.2.4
date	2006-12-12T02:31:40
revision	2

sched_exp_time	0.0
ontime	6060.6935736388
ontime4	2307.6181810647
ontime5	6543.5951638371
ontime6	2482.6342308819
ontime7	6060.6935736388
ontime8	2518.2857006788
ontime9	2466.4293100238
l1events	1548939

### 2.1.4 Events

	ccd 4	ccd 5	ccd 6	ccd 7	ccd 8	ccd 9
level 1 events	160491	415096	183148	426401	187609	176194
rejected events	20917	60801	20222	47878	23397	21201
rejected %	13%	14%	11%	11%	12%	12%

	ccd 4	ccd 5	ccd 6	ccd 7	ccd 8	ccd 9
grade 0 events	79518	42582	89244	71382	91342	85791
	49%	10%	48%	16%	48%	48%
grade 1 events	423	112	455	173	470	432
	0%	0%	0%	0%	0%	0%
grade 2 events	24722	171815	28221	113948	29204	27524
	15%	41%	15%	26%	15%	15%
grade 3 events	8738	12156	10069	29390	10268	9769
	5%	2%	5%	6%	5%	5%
grade 4 events	8648	12041	10108	28895	10334	9498
	5%	2%	5%	6%	5%	5%
grade 5 events	1264	6951	1555	6619	1667	1488
	0%	1%	0%	1%	0%	0%
grade 6 events	18917	118169	25890	137599	24093	23438
	11%	28%	14%	32%	12%	13%
grade 7 events	18261	51270	17606	38395	20231	18254
	11%	12%	9%	9%	10%	10%

## 2.2 Compared Parameters

Parameter	Planned	Actual	Parameter	Planned	Actual
Instrument	ACIS	ACIS	Obspar format version number	6	6
Detector	ACIS-456789	ACIS-456789	Obspar file type	PREDICTED	ACTUAL
Grating	NONE	NONE	Obspar update status	NONE	UPDATED
Data mode	FAINT	FAINT	On-chip summing requested	N	N
Observation mode	SECONDARY	SECONDARY	Subarray requested	NONE	NONE
Pointing RA	0	160.0001596989301	Alternating exposures requested	N	N
Pointing Dec	0	-20.0286567169785	Primary exposure time	3.2	3.2
Pointing Roll	0.0	237.6090108234005			
SIM focus pos (mm)	-0.684267	-0.6828225247311905			
SIM defocus (mm)	0	0.8505141146731063			
SIM translation stage pos (mm)	-190.132523	250.466033080201			
SIM translation stage offset (mm)	0	-0.01005468664627074			
Observation start time	110139348.60507	110139347.83662			
Observation start date	2001-06-28T18:15:49	2001-06-28T18:15:47			
Observation end time	110161742.805944	110161742.03749			
Observation end date	2001-06-29T00:29:03	2001-06-29T00:29:02			
Read mode	TIMED	TIMED			

## 2.3 Aspect



**2.4 Star Slots**

**2.5 FID Slots**

# A Summary

## A.1 Status

V&V Scientist	Jen Lauer
V&V Date (YYYY-MM-DD)	2006.12.12
V&V Edition	1
V&V Disposition and Status	OK
V&V Charge Time	6.0169928

## A.2 Comments

The ACIS focal plane temperature was above calibration limits for the first ksec of the observation.