

V&V Reference Report

L2 ASCDS Version : 8.4.3

Observation 6668 - L2 Version 2
Chandra X-Ray Center

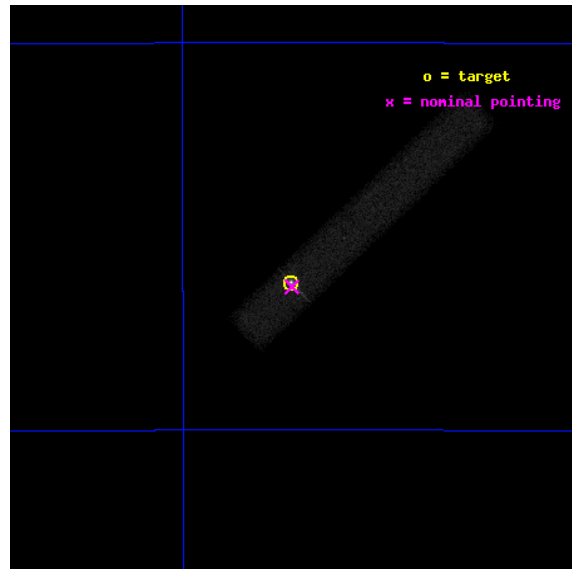
L2 Processing Date : Mar 24 2012

Contents

1	Front	2
2	OBI	3
2.1	OBI	3
2.1.1	Images	3
2.1.2	Bias	3
2.1.3	Parameters	4
2.1.4	Events	4
2.2	Compared Parameters	5
2.3	Aspect	6
2.4	Star Slots	9
2.4.1	Slot 3	9
2.4.2	Slot 4	10
2.4.3	Slot 5	11
2.4.4	Slot 6	12
2.4.5	Slot 7	13
2.5	FID Slots	14
2.5.1	Slot 0	14
2.5.2	Slot 1	15
2.5.3	Slot 2	16
A	Summary	17
A.1	Status	17
A.2	Comments	17

1 Front

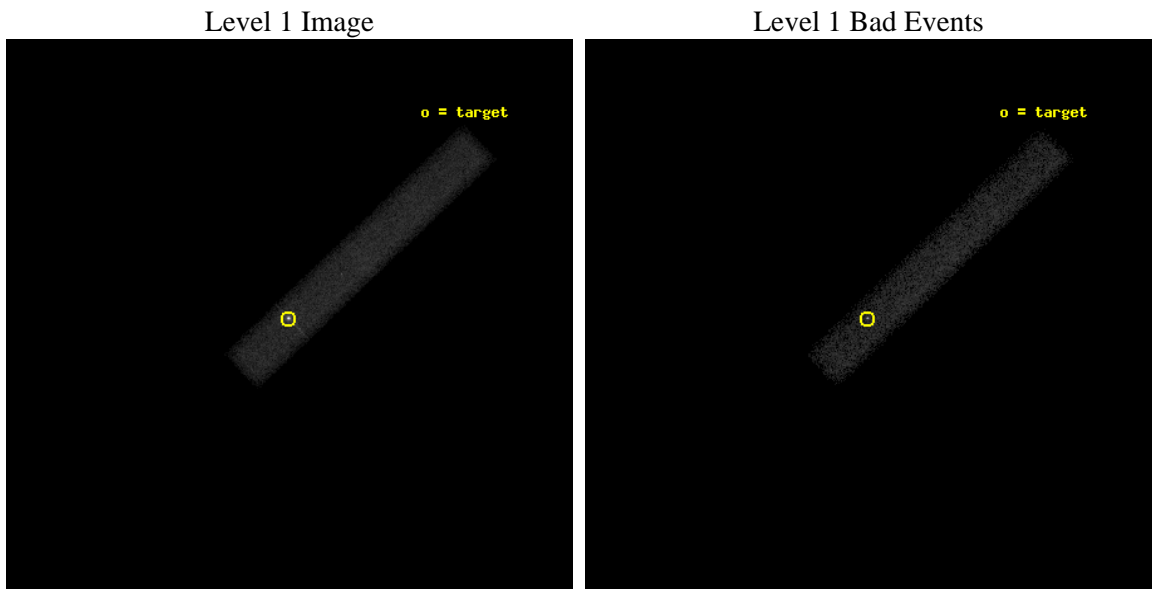
seq_num	500622	Sequence number
obs_id	6668	Observation id
title	The Evolution of SNR1987A	Proposal title
observer	Prof. David Burrows	Principal investigator
object	SNR1987A	Source name
dtcycle	0	
cycle	P	events from which exps? Prim/Second/Both
ra_targ	83.866667	Observer's specified target RA [deg]
dec_targ	-69.26975	Observer's specified target Dec [deg]
ra_nom	83.865964923631	Nominal RA [deg]
dec_nom	-69.27182458191	Nominal Dec [deg]
roll_nom	316.39308209688	Nominal Roll [deg]
revision	2	Processing version of data
ontime	46682.000695586	Sum of GTIs [s]
livetime	42338.110552863	Livetime [s]
ontime7	46682.000695586	Sum of GTIs [s]
l2events	64922	Number of level 2 events



2 OBI

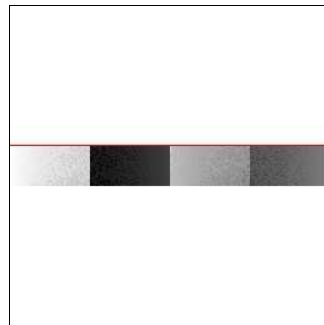
2.1 OBI

2.1.1 Images



2.1.2 Bias

Chip 7



2.1.3 Parameters

obi_num	0	Obi number	sched_exp_time	46500.000000	[s] Scheduled observation exposure time
ascdsver	8.4.3	Processing system revision	ontime	46682.000695586	Sum of GTIs [s]
caldbver	4.4.8	 	ontime7	46682.000695586	Sum of GTIs [s]
date	2012-03-24T07:25:22	Date and time of file creation	l1events	106261	Number of level 1 events
revision	2	Processing version of data			

2.1.4 Events

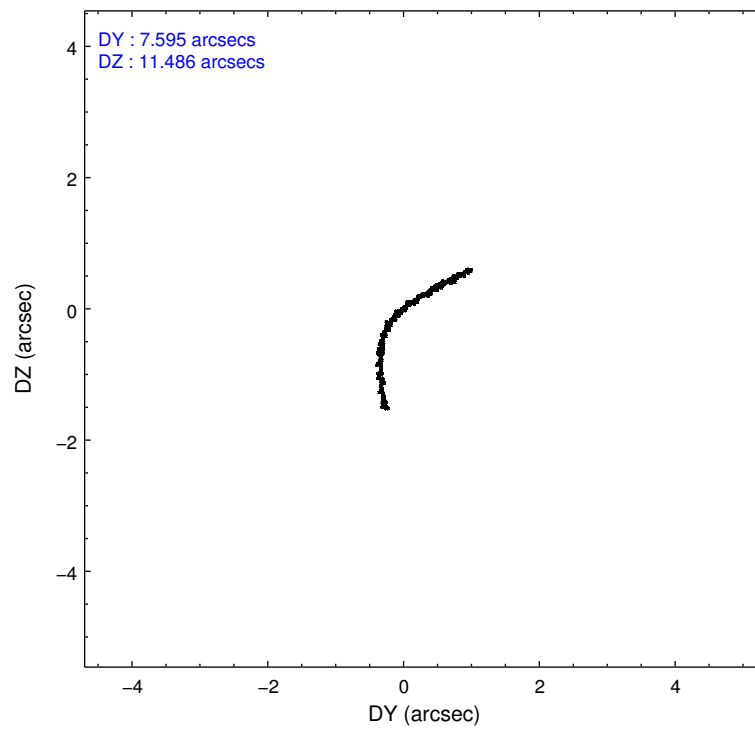
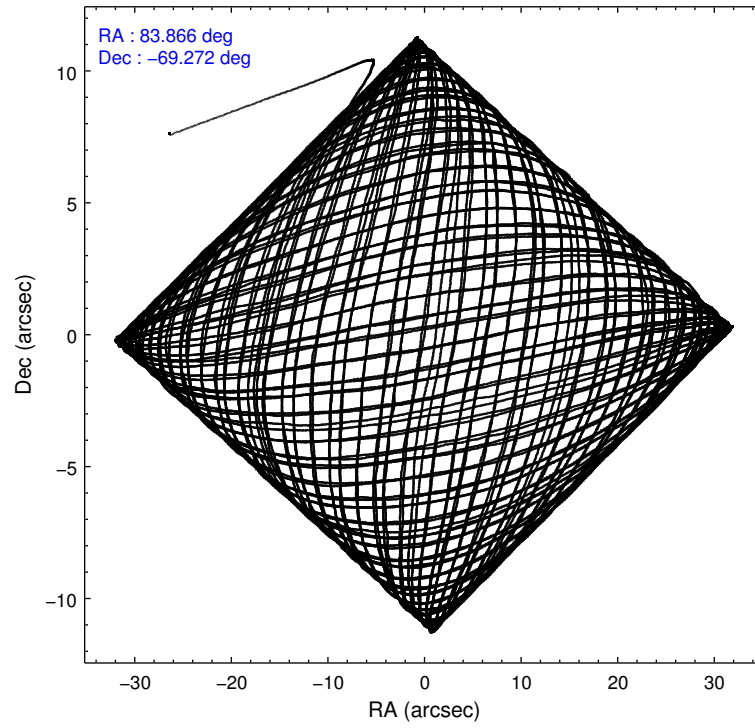
	ccd 7
level 1 events	106261
rejected events	40092
rejected %	37%

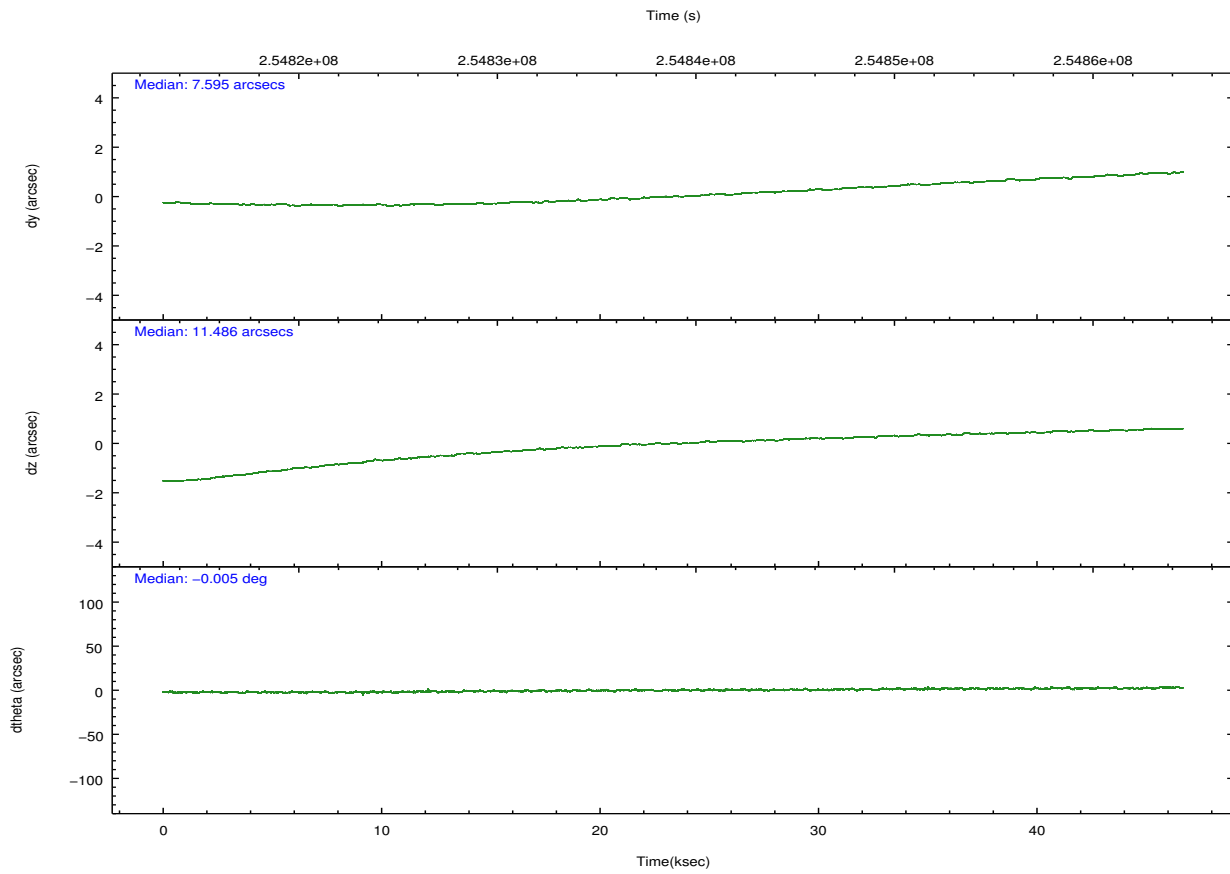
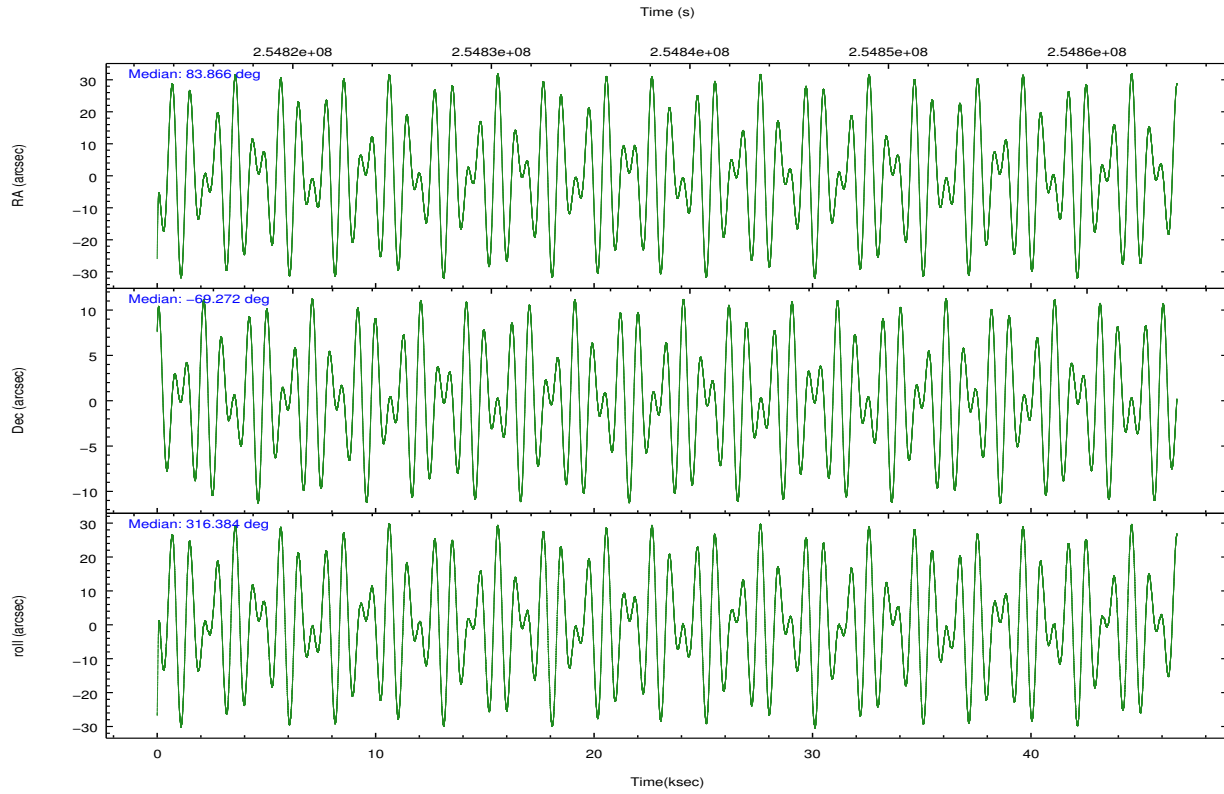
	ccd 7
grade 0 events	13672
	12%
grade 1 events	379
	0%
grade 2 events	15736
	14%
grade 3 events	8383
	7%
grade 4 events	8153
	7%
grade 5 events	7326
	6%
grade 6 events	20894
	19%
grade 7 events	31718
	29%

2.2 Compared Parameters

Parameter	Planned	Actual	Parameter	Planned	Actual
Instrument	ACIS	ACIS	Obspar format version number	7	7
Detector	ACIS-7	ACIS-7	Obspar file type	PREDICTED	ACTUAL
Grating	NONE	NONE	Obspar update status	NONE	UPDATED
Data mode	VFAINT	VFAINT	Number of optional ACIS chips dropped	0	0
Observation mode	POINTING	POINTING	On-chip summing requested	N	N
[deg] Pointing RA	83.790957	83.86596492363084	Subarray requested	CUSTOM	1/8
[deg] Pointing Dec	-69.265740	-69.27182458190997	Subarray start row	449	449
[deg] Pointing Roll	316.166308	316.3930820968833	Subarray row count	128	128
[mm] SIM focus pos	-0.684267	-0.6828225247311905	Alternating exposures requested	N	N
[mm] SIM defocus	0	0.001444936568705701	[s] Primary exposure time	0.000000	0.4
[mm] SIM translation stage pos	-190.132523	-190.1425803651734			
[mm] SIM translation stage offset	0	0.01005778216563158			
[s] Observation start time (MET)	254815687.184000	254814633.41255			
Observation start date	2006-01-28T06:07:02	2006-01-28T05:50:33			
[s] Observation end time (MET)	254862187.184000	254863000.60229			
Observation end date	2006-01-28T19:02:02	2006-01-28T19:16:40			
Read mode	TIMED	TIMED			

2.3 Aspect





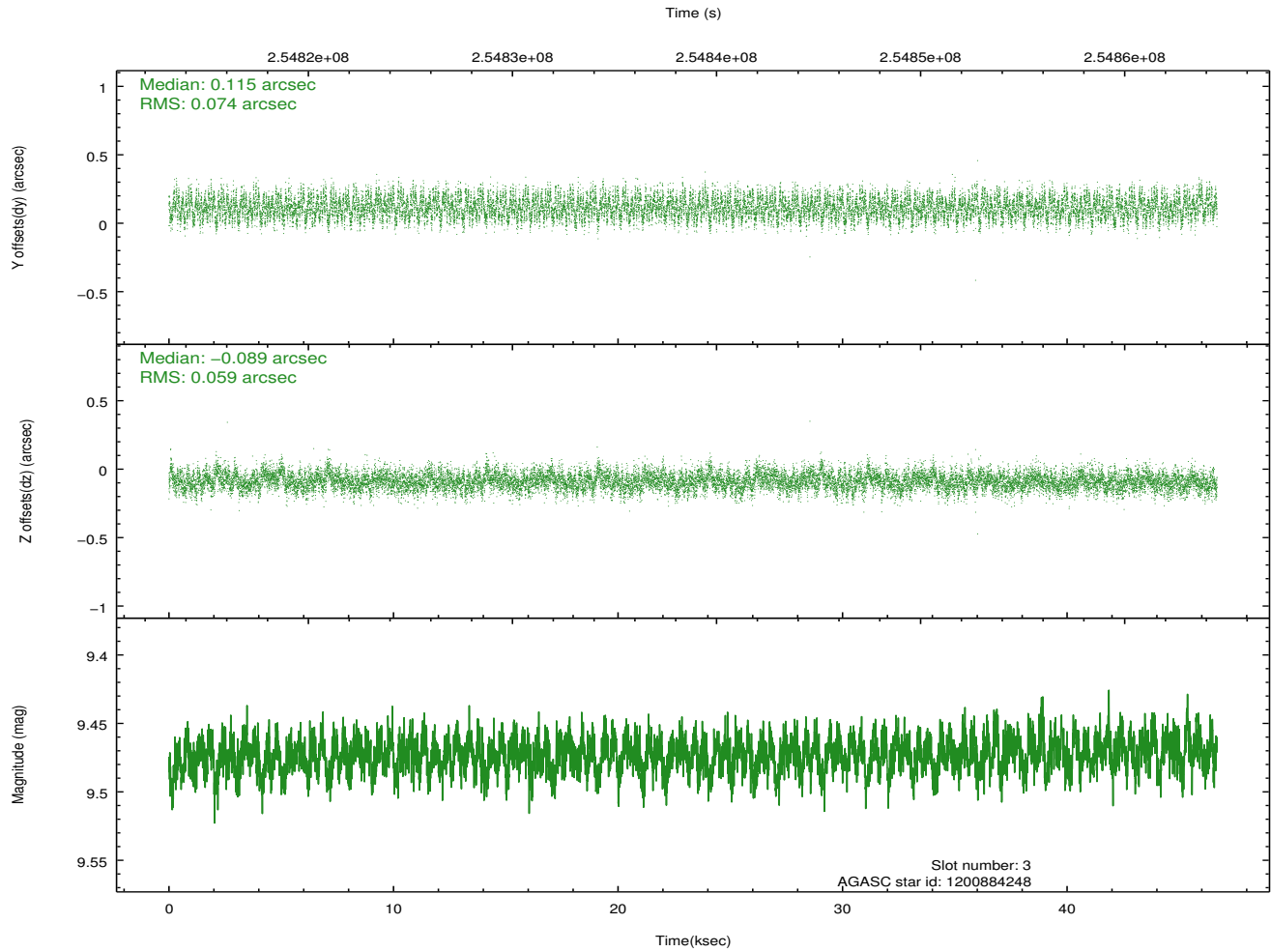
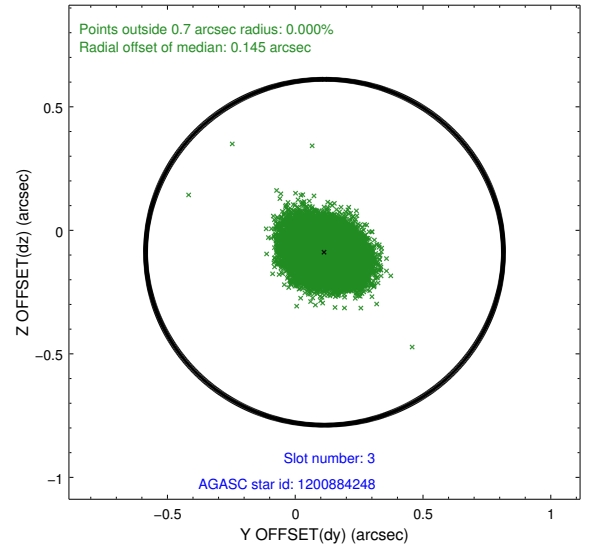
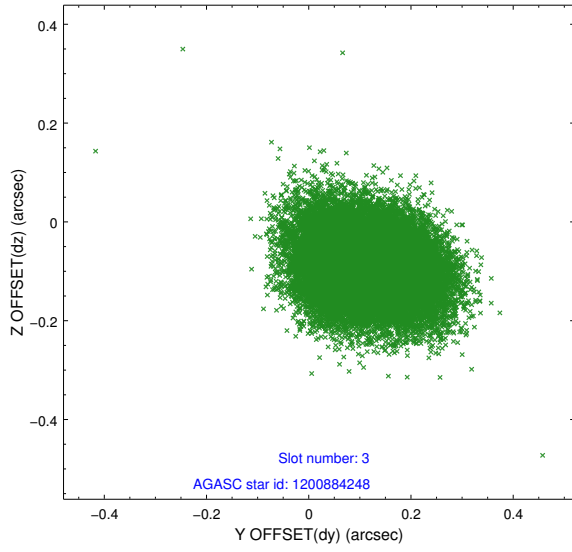
Slot Statistics

slot	status	id	mag	n_pts	med_dy	med_dz	dr1	dr2	ra	dec	mean_y	mean_z
0	FID	ACIS-S-2	7.10	11387	-0.034	-0.018	0.021	0.029	0.000000	0.000000	-760.50	-1732.58
1	FID	ACIS-S-4	7.20	11385	0.097	0.022	0.013	0.025	0.000000	0.000000	2152.89	175.99
2	FID	ACIS-S-5	7.23	11386	-0.089	0.004	0.027	0.051	0.000000	0.000000	-1813.43	169.58
3	GUIDE	1200884248	9.47	22746	0.115	-0.089	0.101	0.160	83.880915	-68.565170	-1661.26	1901.29
4	GUIDE	1201020040	8.61	22765	-0.059	-0.222	0.078	0.122	85.379163	-68.879396	540.92	2410.88
5	GUIDE	1201410616	9.35	22745	-0.141	0.270	0.099	0.161	82.516808	-69.784406	161.76	-2455.89
6	GUIDE	1201407840	8.00	22726	0.122	-0.045	0.076	0.125	83.696303	-70.172201	2177.58	-2433.91
7	GUIDE	1201542672	8.21	22769	-0.032	0.086	0.069	0.111	84.492488	-69.957531	2352.61	-1199.16

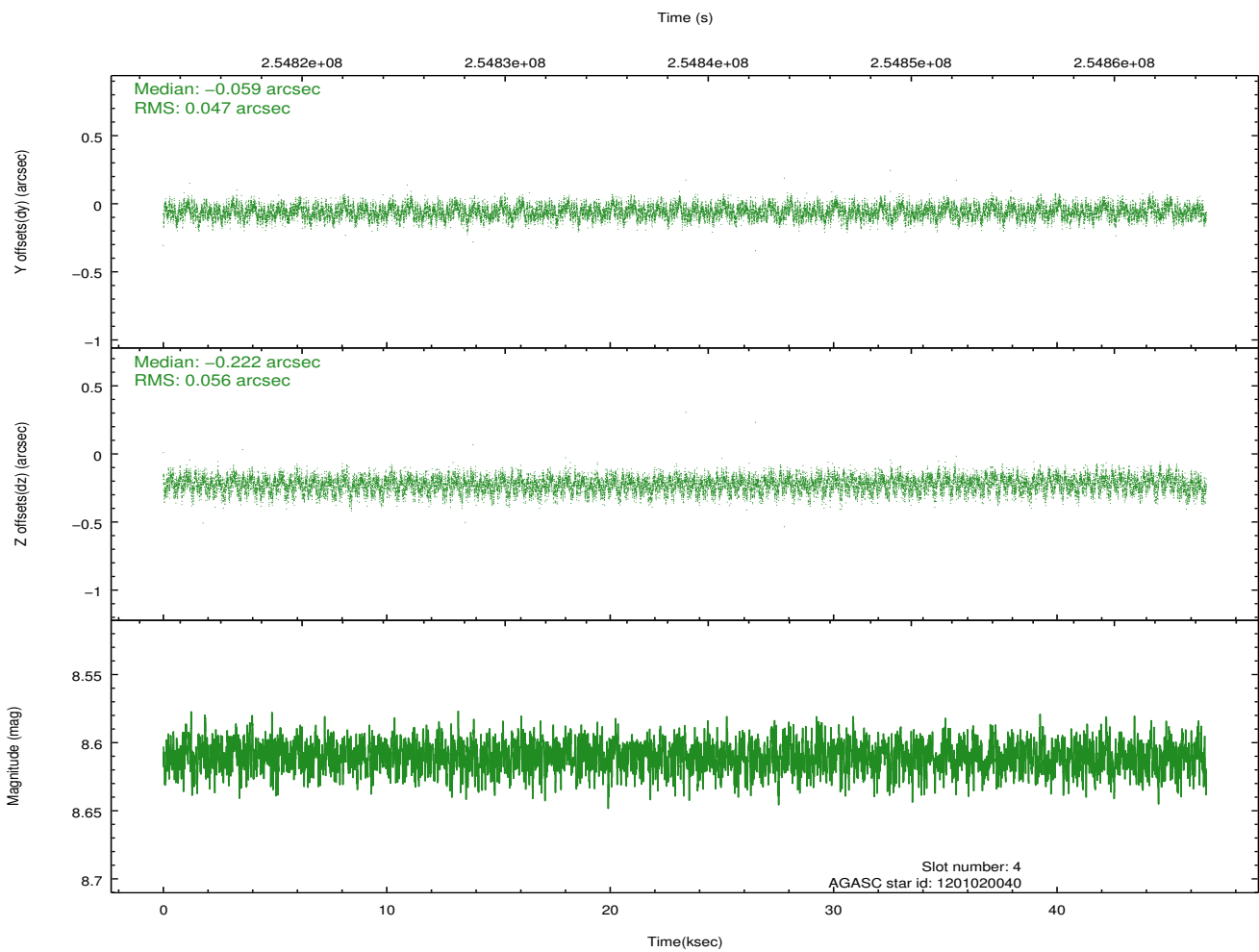
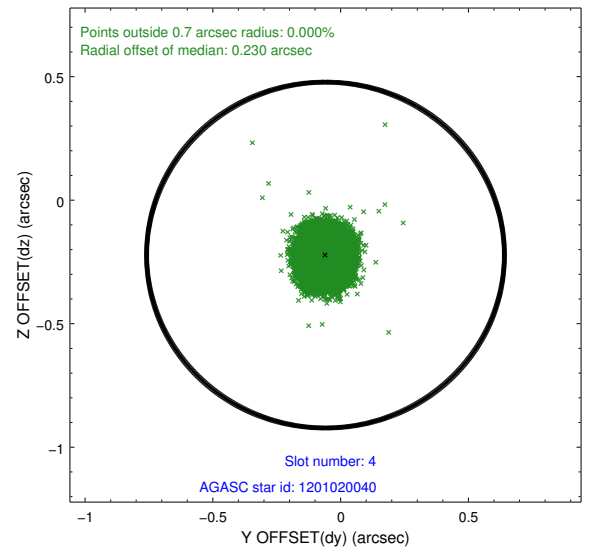
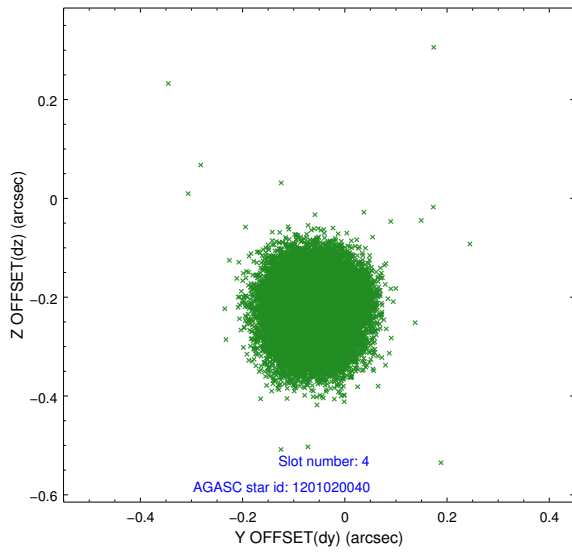
∞

2.4 Star Slots

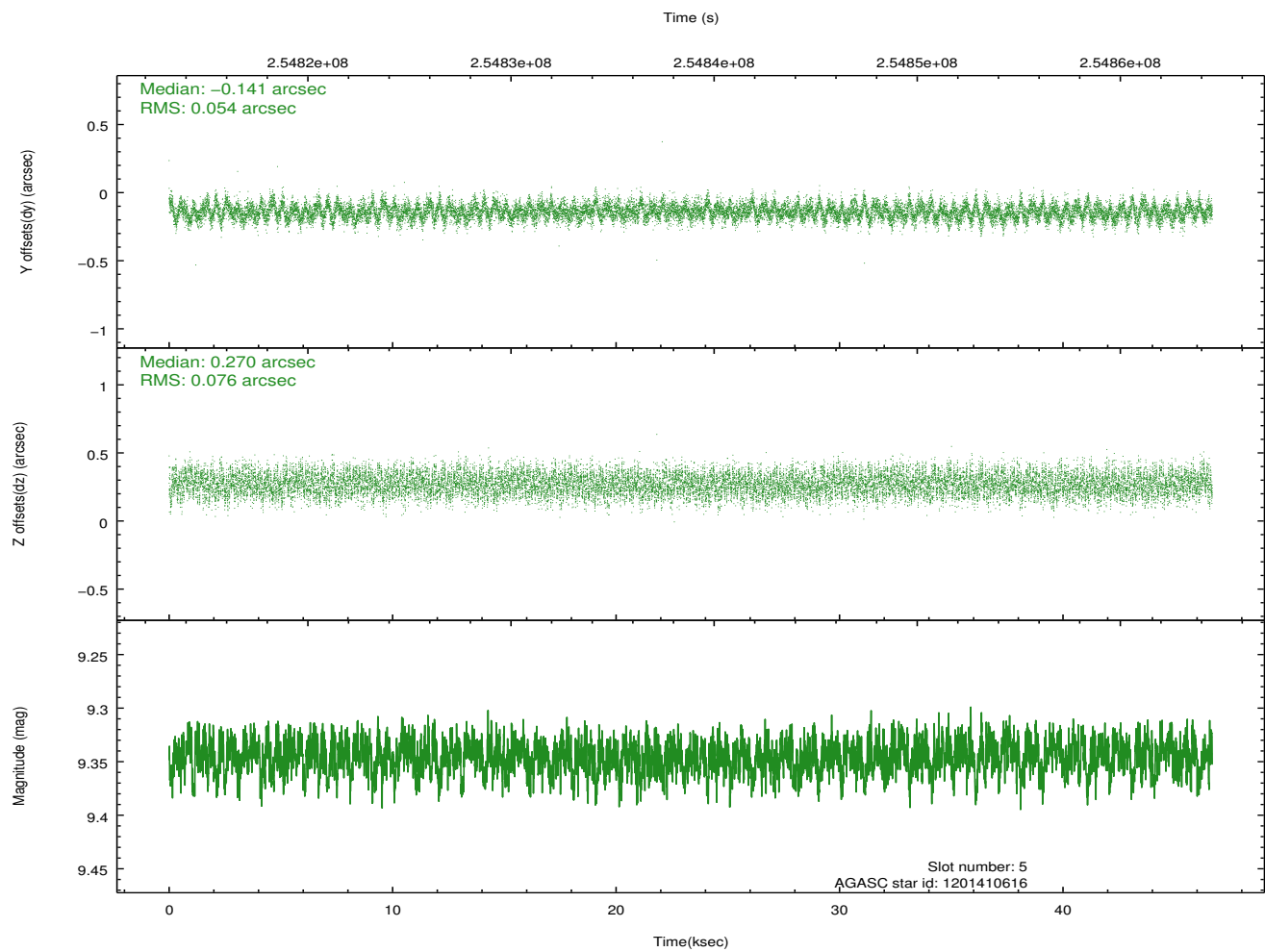
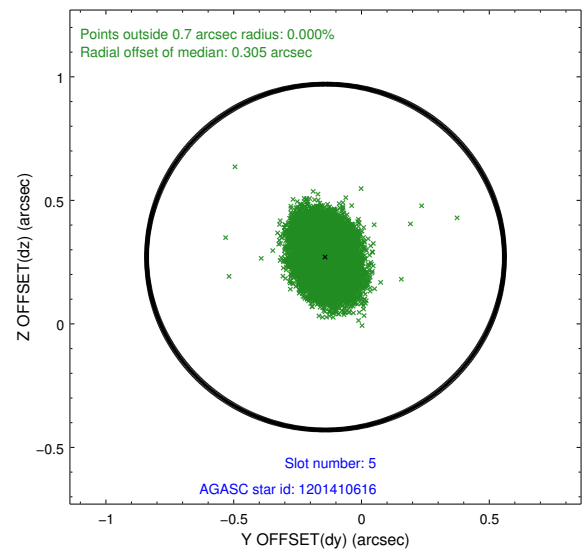
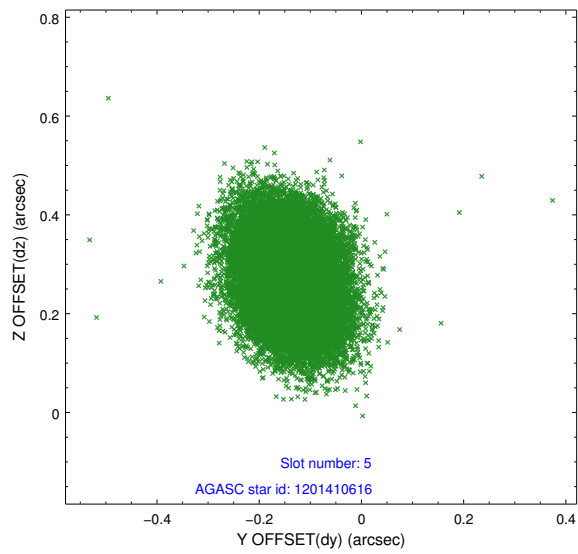
2.4.1 Slot 3



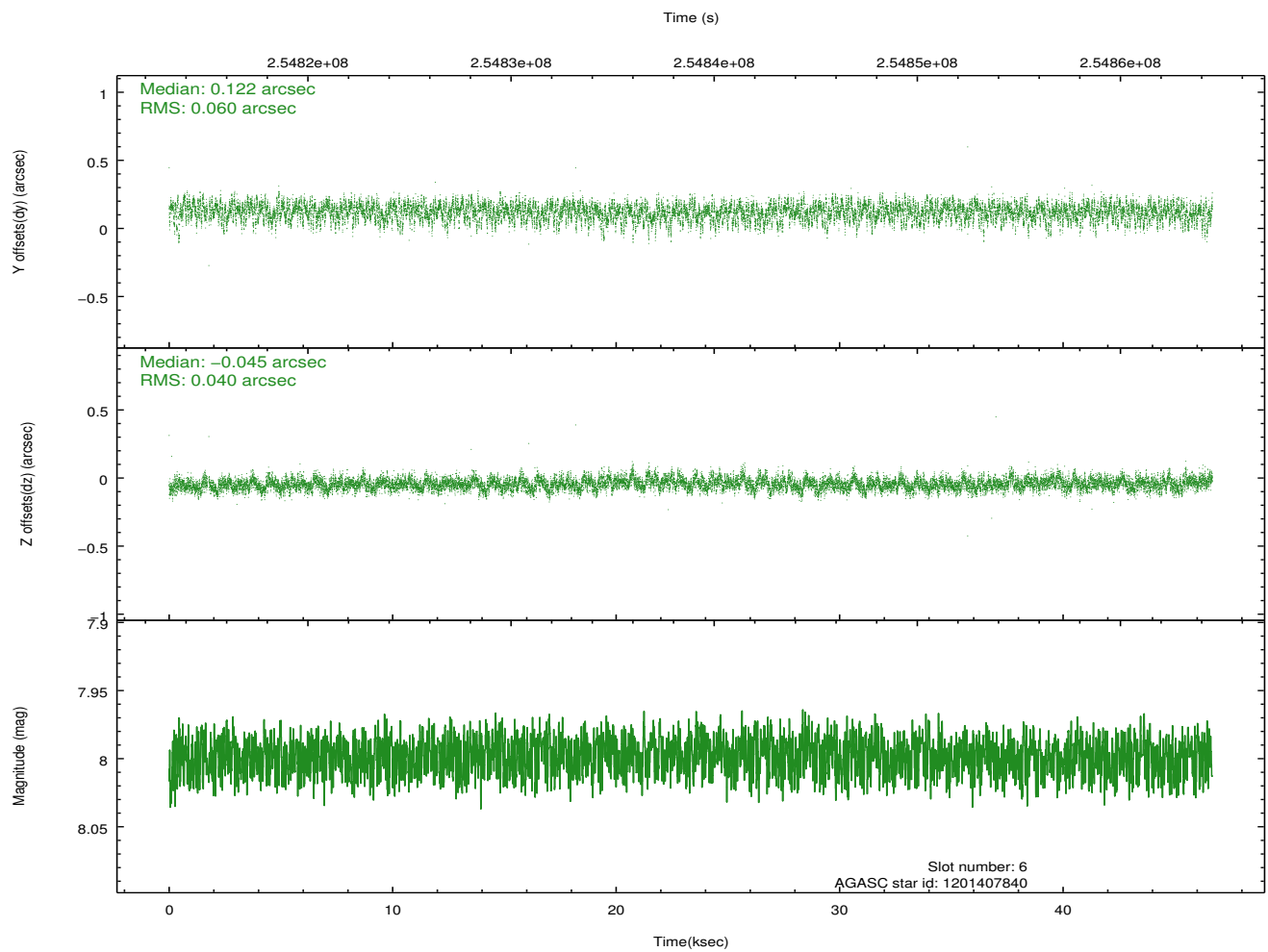
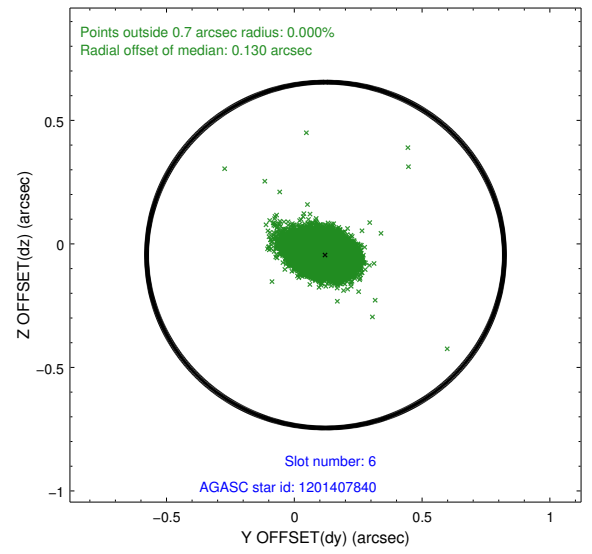
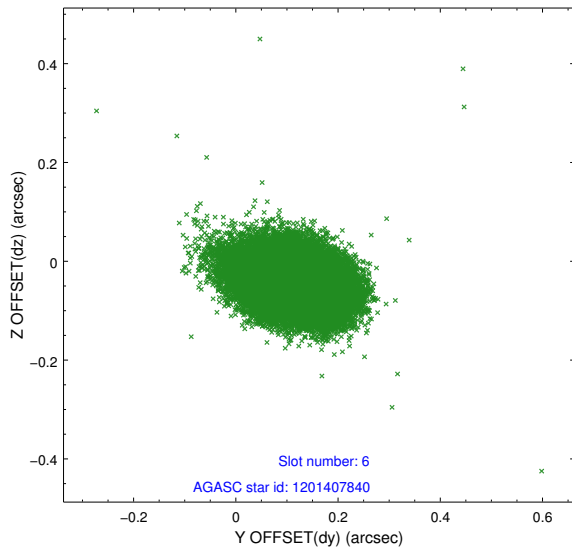
2.4.2 Slot 4



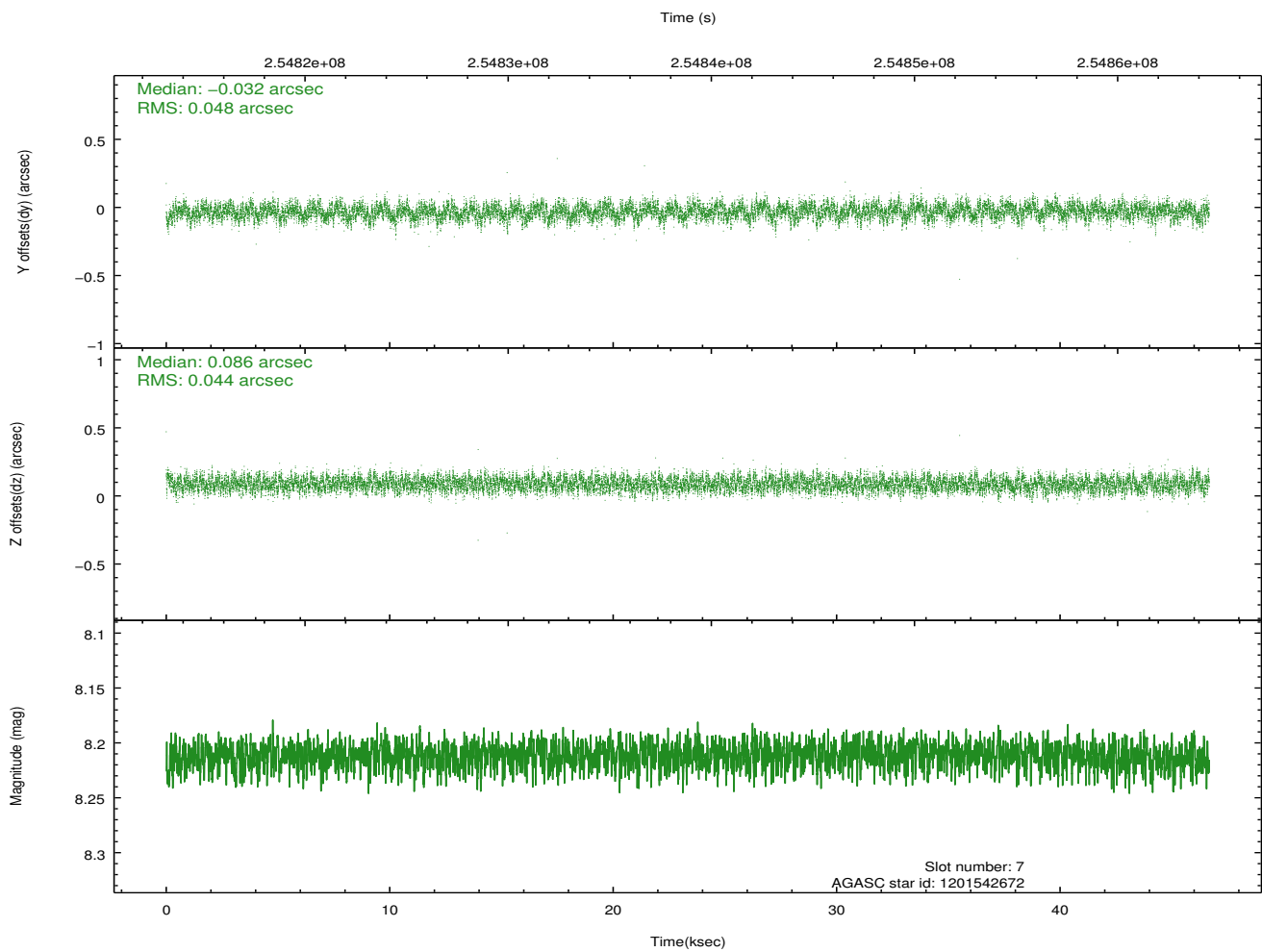
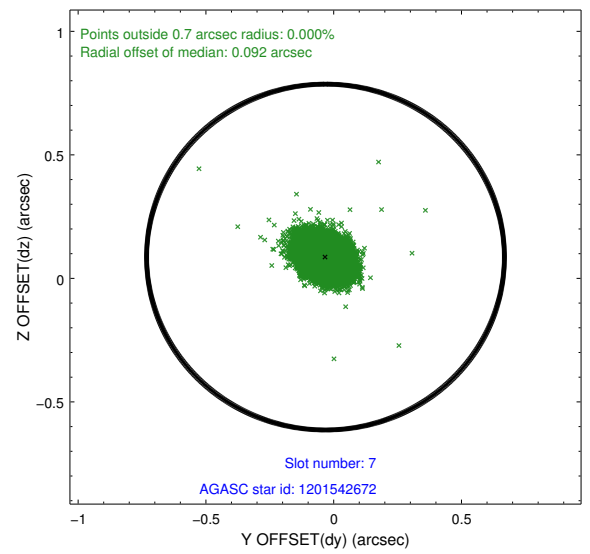
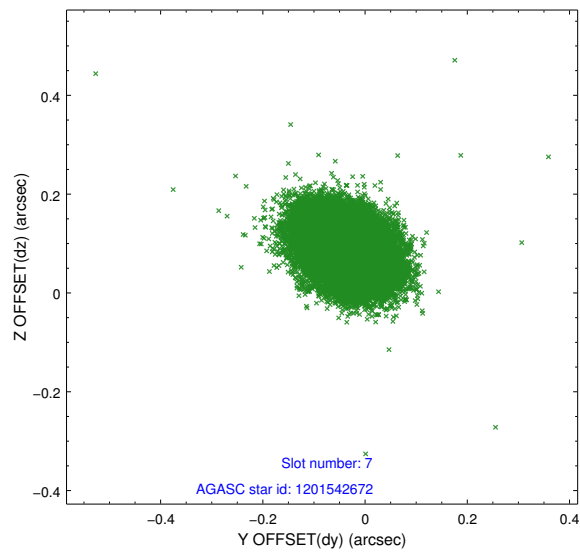
2.4.3 Slot 5



2.4.4 Slot 6

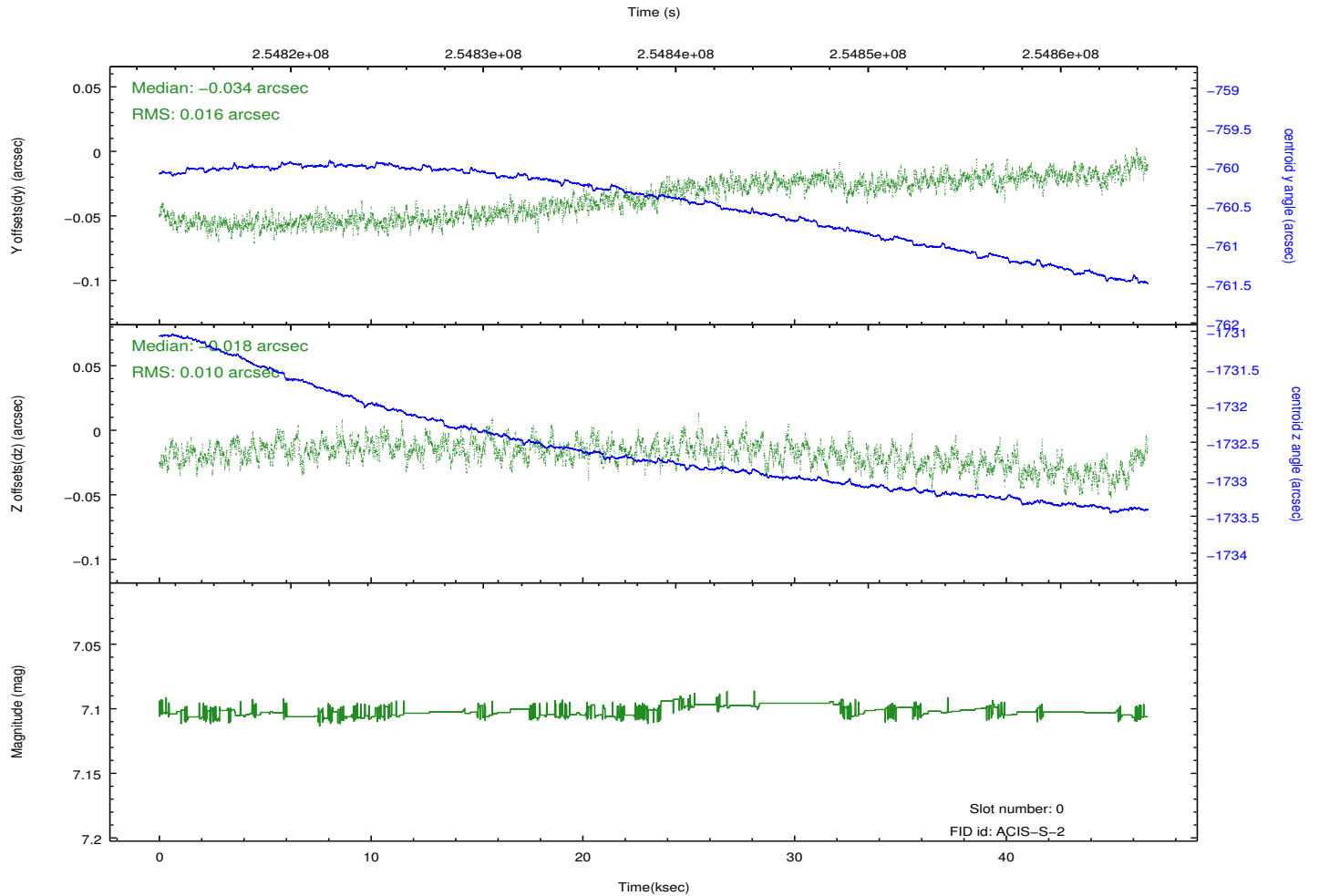
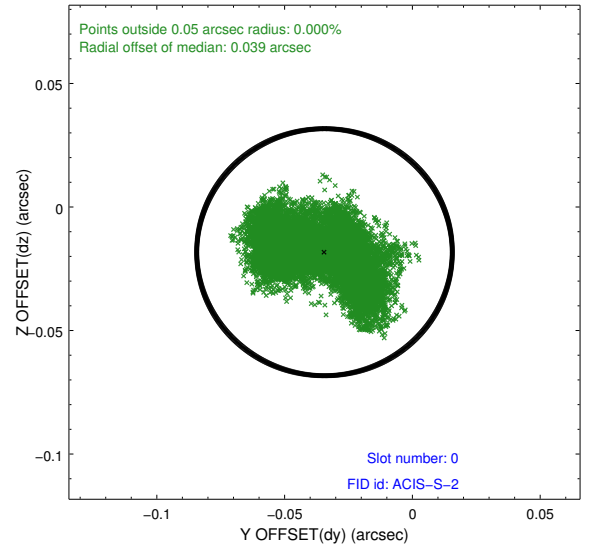
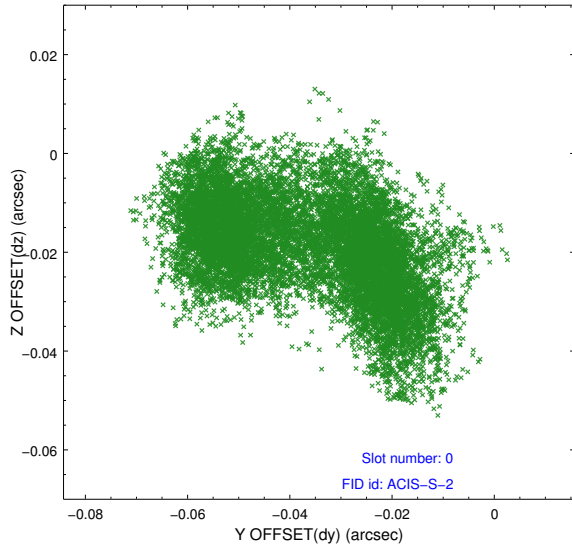


2.4.5 Slot 7

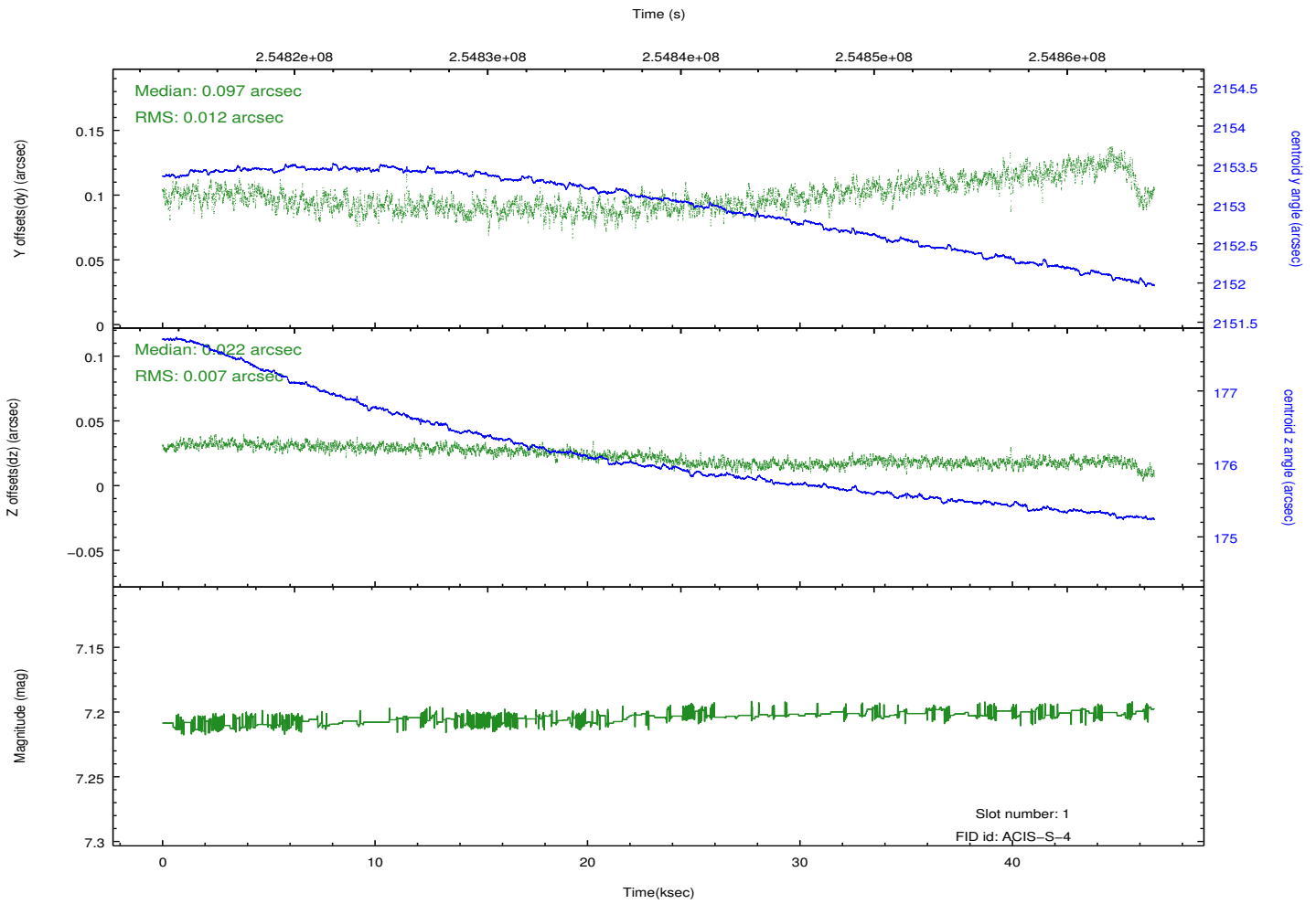
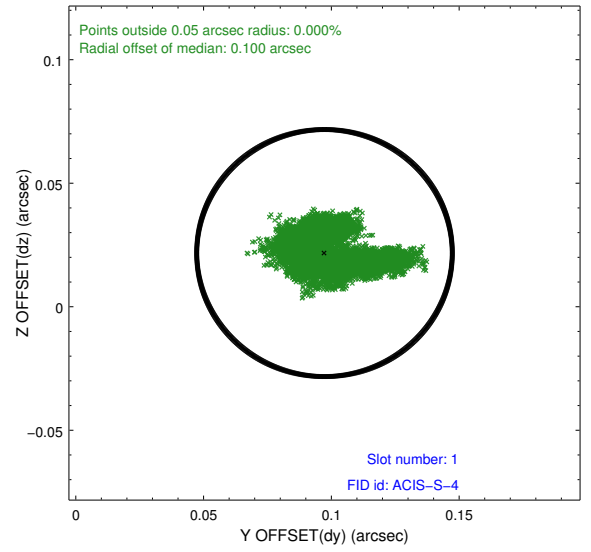
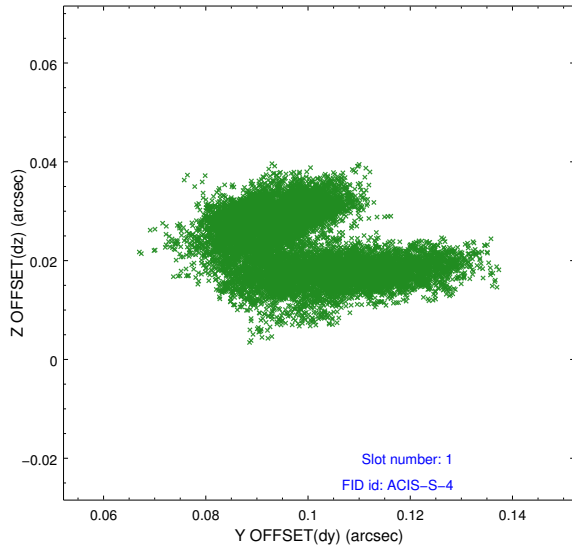


2.5 FID Slots

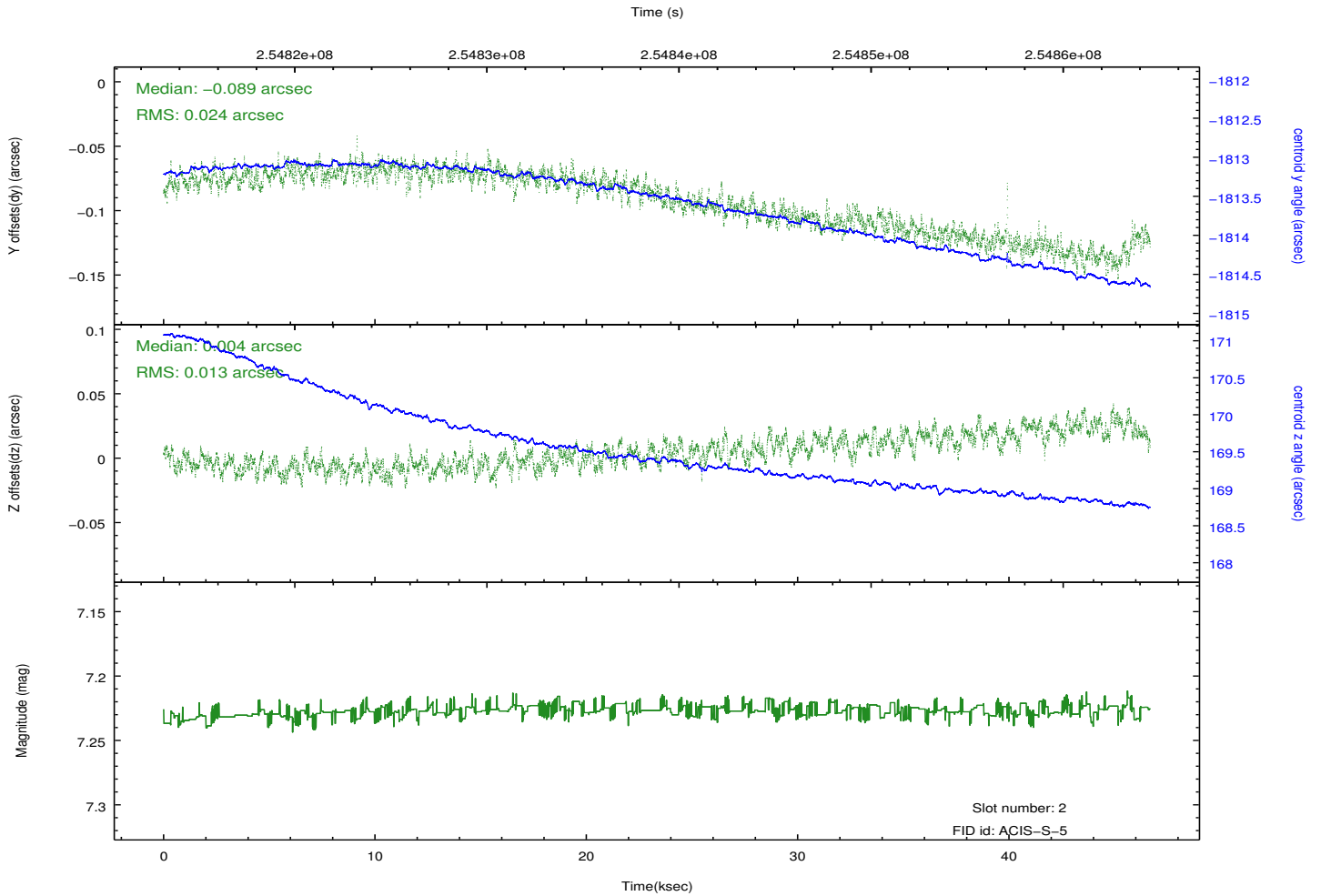
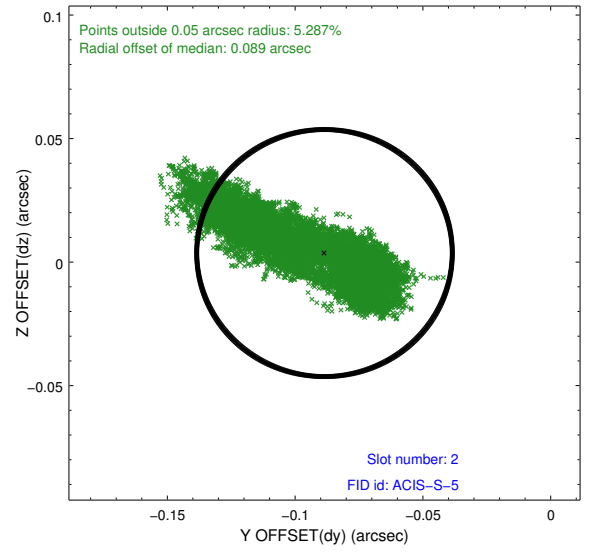
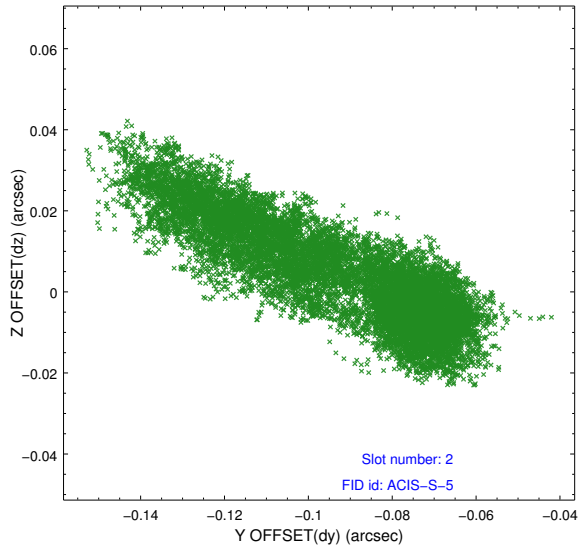
2.5.1 Slot 0



2.5.2 Slot 1



2.5.3 Slot 2



A Summary

A.1 Status

V&V Scientist	Jen Lauer
V&V Date (YYYY-MM-DD)	2012.03.26
V&V Edition	1
V&V Disposition and Status	OK
V&V Charge Time	46.6820006

A.2 Comments