

V&V Reference Report

L2 ASCDS Version : 8.4.3.1

Observation 6768 - L2 Version 2
Chandra X-Ray Center

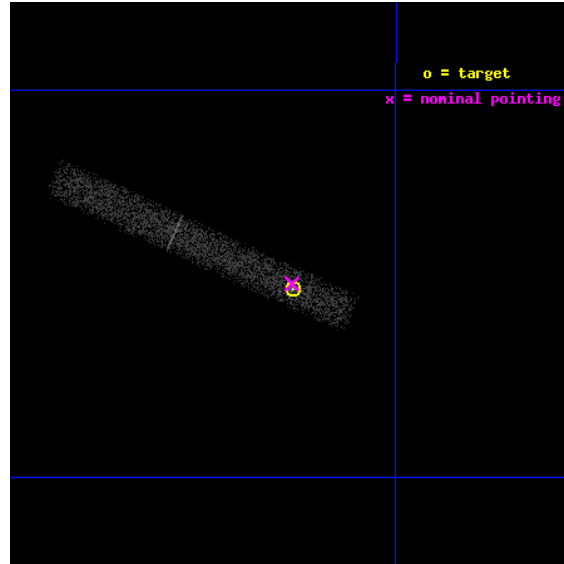
L2 Processing Date : Mar 31 2012

Contents

1	Front	2
2	OBI	3
2.1	OBI	3
2.1.1	Images	3
2.1.2	Bias	3
2.1.3	Parameters	4
2.1.4	Events	4
2.2	Compared Parameters	5
2.3	Aspect	6
2.4	Star Slots	9
2.4.1	Slot 3	9
2.4.2	Slot 4	10
2.4.3	Slot 5	11
2.4.4	Slot 6	12
2.4.5	Slot 7	13
2.5	FID Slots	14
2.5.1	Slot 0	14
2.5.2	Slot 1	15
2.5.3	Slot 2	16
A	Summary	17
A.1	Status	17
A.2	Comments	17

1 Front

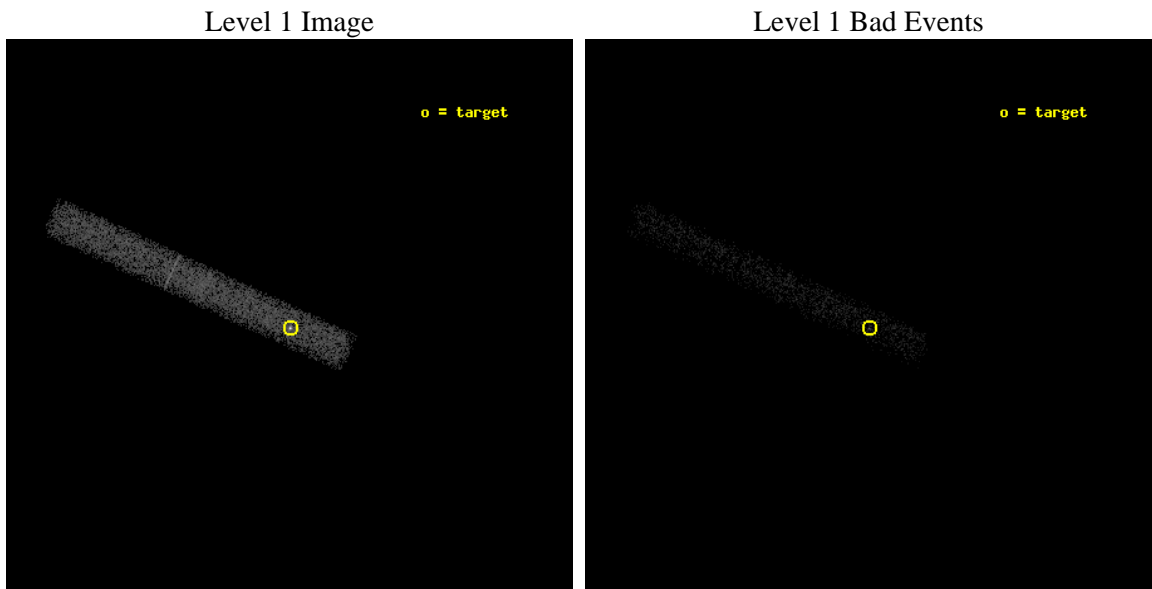
seq_num	590451	Sequence number
obs_id	6768	Observation id
title	AO7 Calibration Observation of PSR J0437-4715 to Improve the Calibration of Pile-up in ACIS-S Images	Proposal title
observer	Dr. CXC Calibration	Principal investigator
object	PSR J0437-4715	Source name
dtcycle	0	
cycle	P	events from which exps? Prim/Second/Both
ra_targ	69.315833	Observer's specified target RA [deg]
dec_targ	-47.252333	Observer's specified target Dec [deg]
ra_nom	69.316772057941	Nominal RA [deg]
dec_nom	-47.250218035779	Nominal Dec [deg]
roll_nom	204.5115163419	Nominal Roll [deg]
revision	2	Processing version of data
ontime	24862.25	Sum of GTIs [s]
livetime	8384.5375600708	Livetime [s]
ontime7	24862.25	Sum of GTIs [s]
l2events	8592	Number of level 2 events



2 OBI

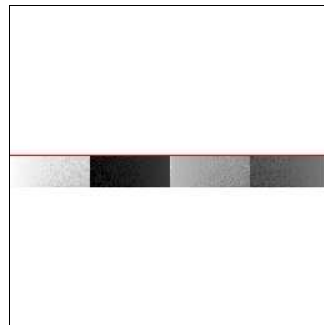
2.1 OBI

2.1.1 Images



2.1.2 Bias

Chip 7



2.1.3 Parameters

obi_num	0	Obi number	sched_exp_time	25000.000000	[s] Scheduled observation exposure time
ascdsver	8.4.3	Processing system revision	ontime	24862.25	Sum of GTIs [s]
caldbver	4.4.8	 	ontime7	24862.25	Sum of GTIs [s]
date	2012-03-31T12:37:09	Date and time of file creation	l1events	17027	Number of level 1 events
revision	2	Processing version of data			

2.1.4 Events

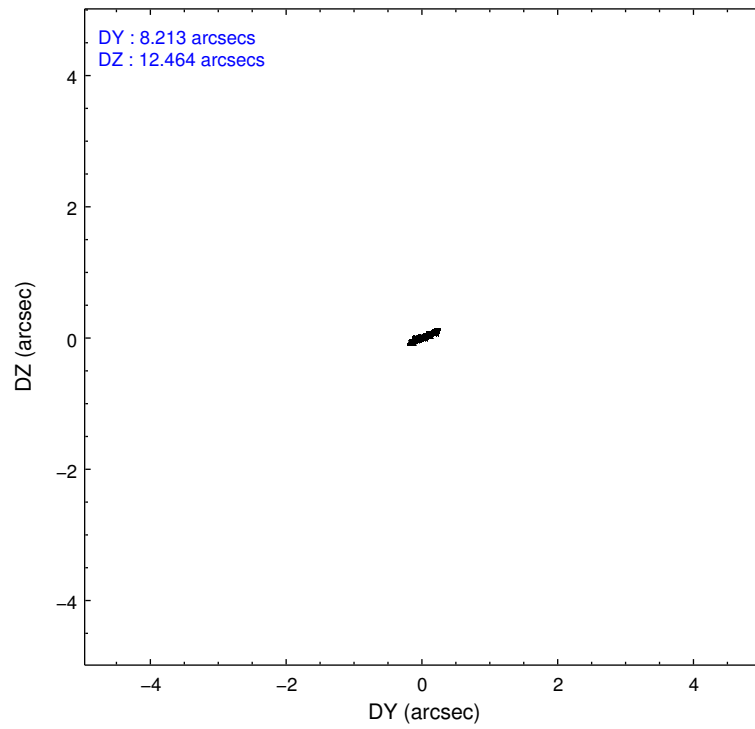
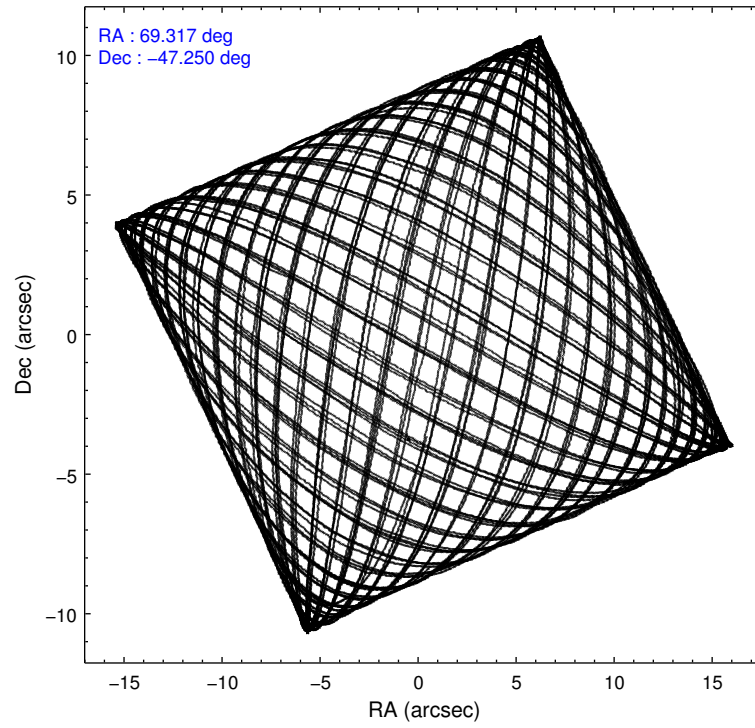
	ccd 7
level 1 events	17027
rejected events	8085
rejected %	47%

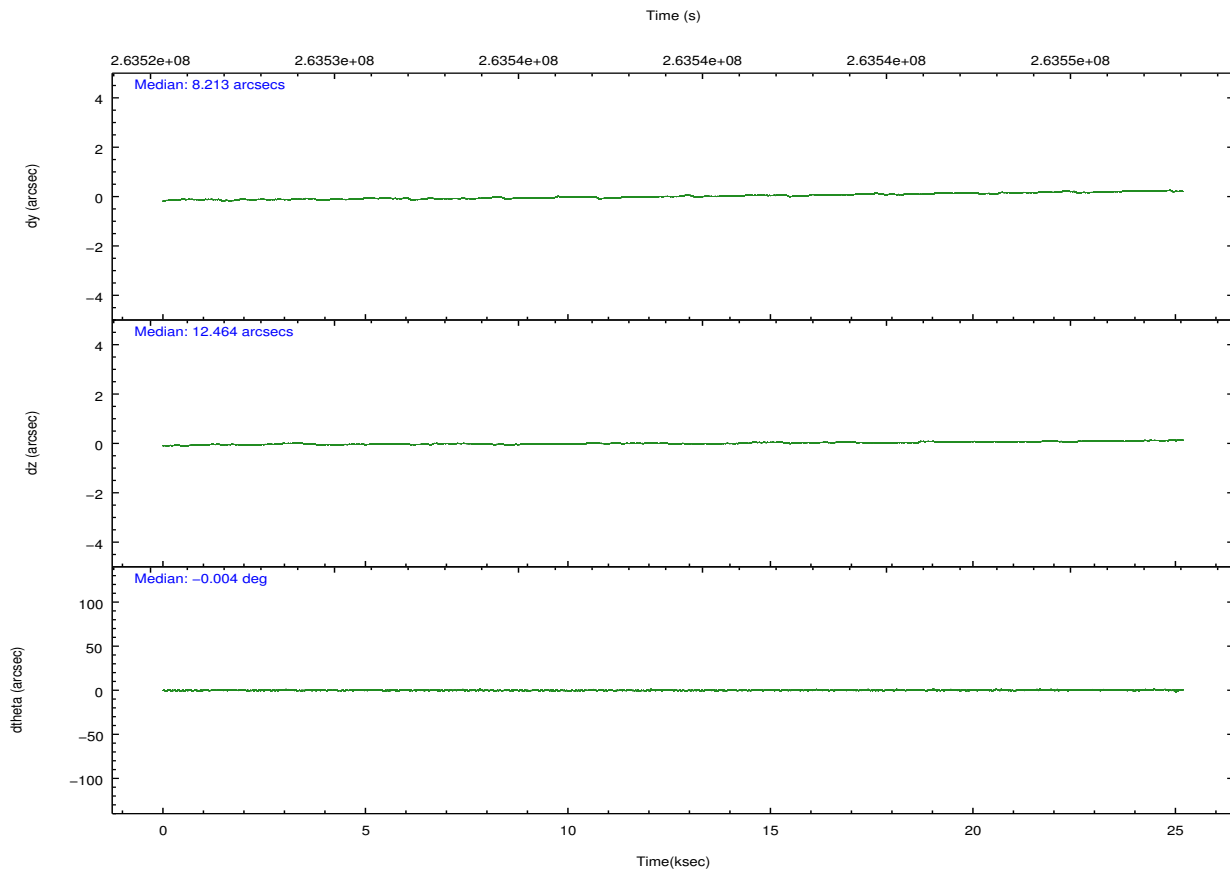
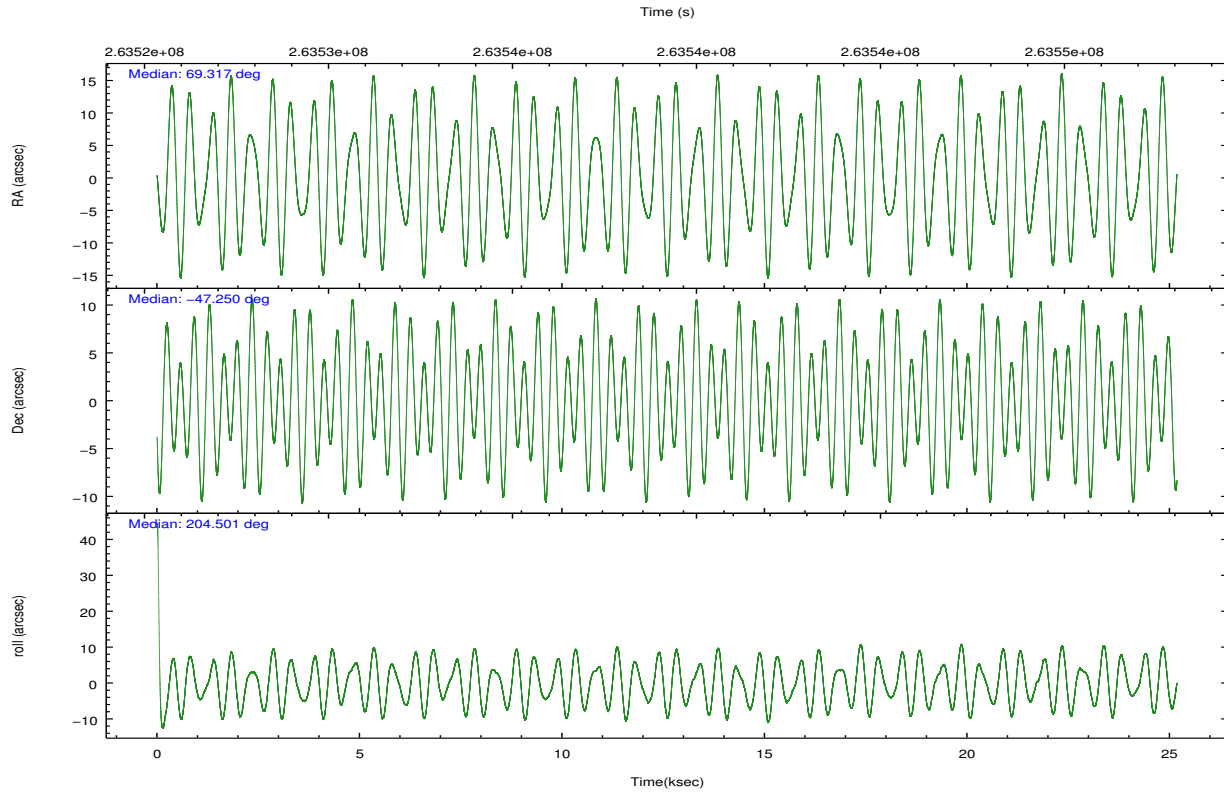
	ccd 7
grade 0 events	1696
	9%
grade 1 events	27
	0%
grade 2 events	1812
	10%
grade 3 events	1281
	7%
grade 4 events	1227
	7%
grade 5 events	1278
	7%
grade 6 events	2926
	17%
grade 7 events	6780
	39%

2.2 Compared Parameters

Parameter	Planned	Actual	Parameter	Planned	Actual
Instrument	ACIS	ACIS	Obspar format version number	7	7
Detector	ACIS-7	ACIS-7	Obspar file type	PREDICTED	ACTUAL
Grating	NONE	NONE	Obspar update status	NONE	UPDATED
Data mode	VFAINT	VFAINT	Number of optional ACIS chips dropped	0	0
Observation mode	POINTING	POINTING	On-chip summing requested	N	N
[deg] Pointing RA	69.339627	69.31677205794074	Subarray requested	CUSTOM	CUSTOM
[deg] Pointing Dec	-47.227819	-47.25021803577926	Subarray start row	447	447
[deg] Pointing Roll	204.371641	204.5115163419042	Subarray row count	101	101
[s] Window start time (MET)	258768065.184000	258768065.184000	Alternating exposures requested	N	N
[s] Window stop time (MET)	265420865.184000	265420865.184000	[s] Primary exposure time	0.000000	0.2
[mm] SIM focus pos	-0.684267	-0.6828225247311905			
[mm] SIM defocus	0	0.001444936568705701			
[mm] SIM translation stage pos	-190.132523	-190.1425803651734			
[mm] SIM translation stage offset	0	0.01005778216563158			
[s] Observation start time (MET)	263526794.184000	263526216.44289			
Observation start date	2006-05-09T01:52:09	2006-05-09T01:43:36			
[s] Observation end time (MET)	263551794.184000	263553243.13165			
Observation end date	2006-05-09T08:48:49	2006-05-09T09:14:03			
Read mode	TIMED	TIMED			

2.3 Aspect



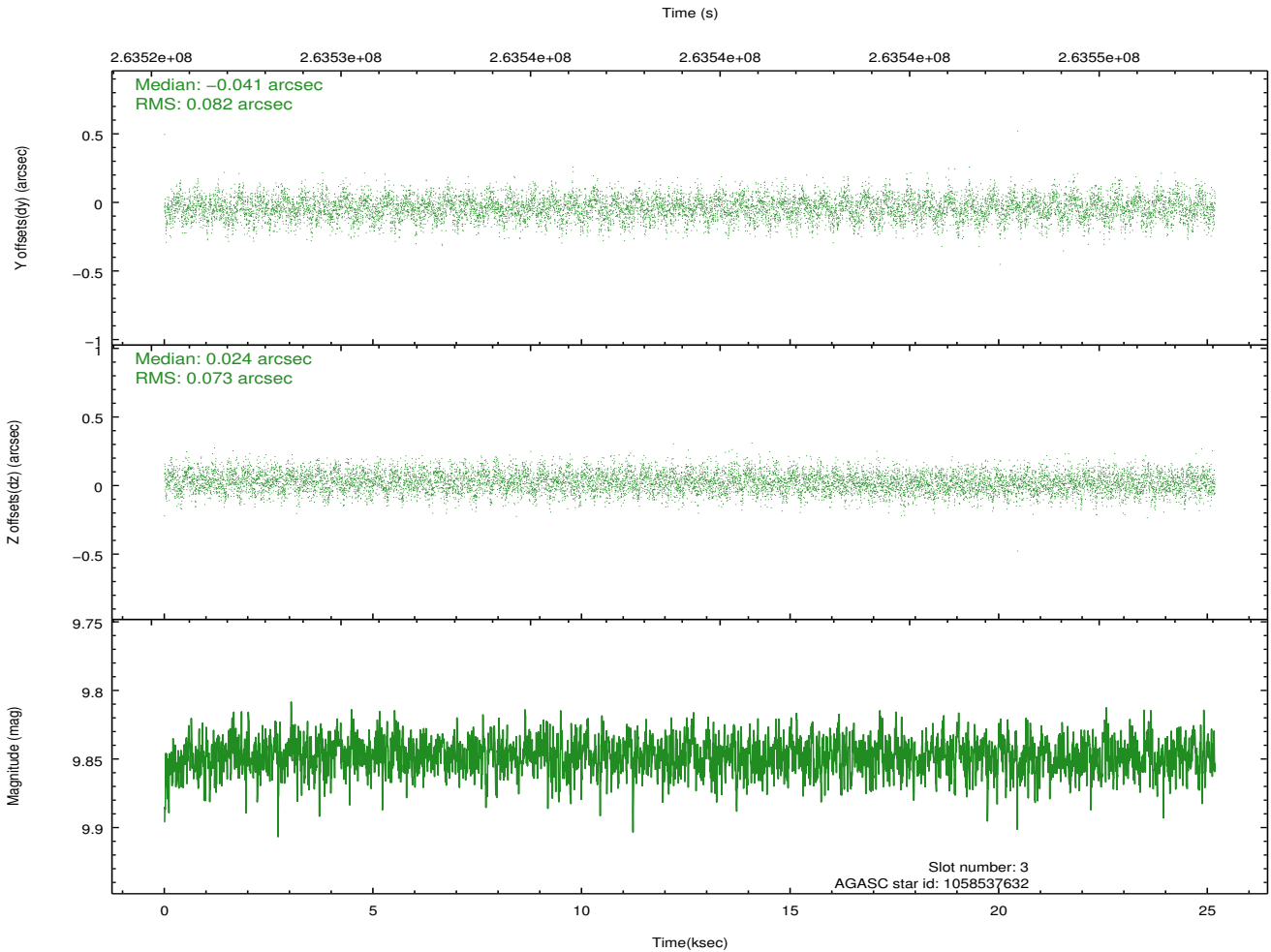
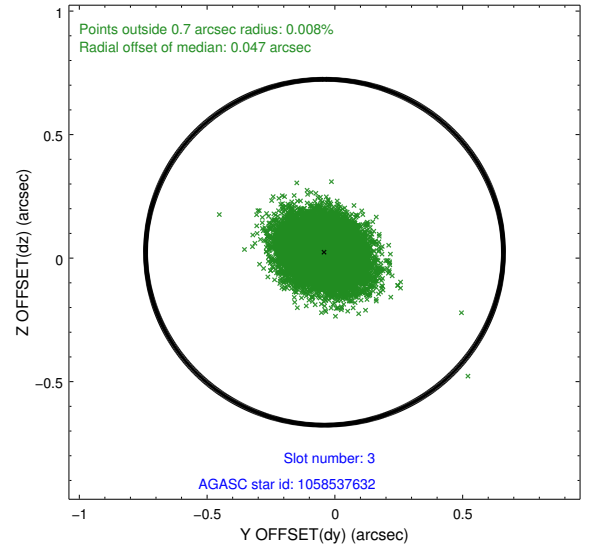
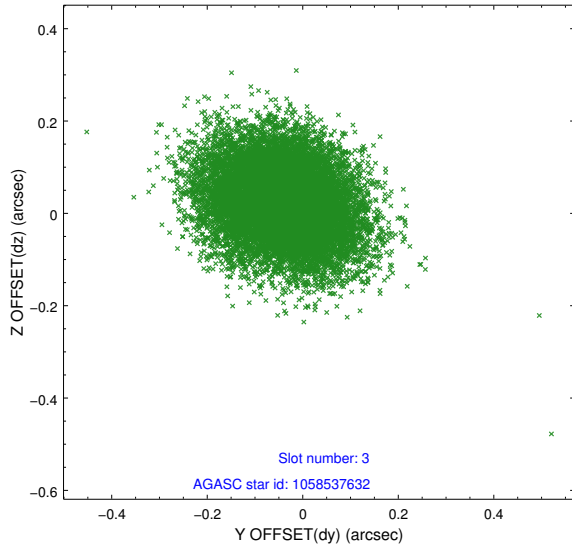


Slot Statistics

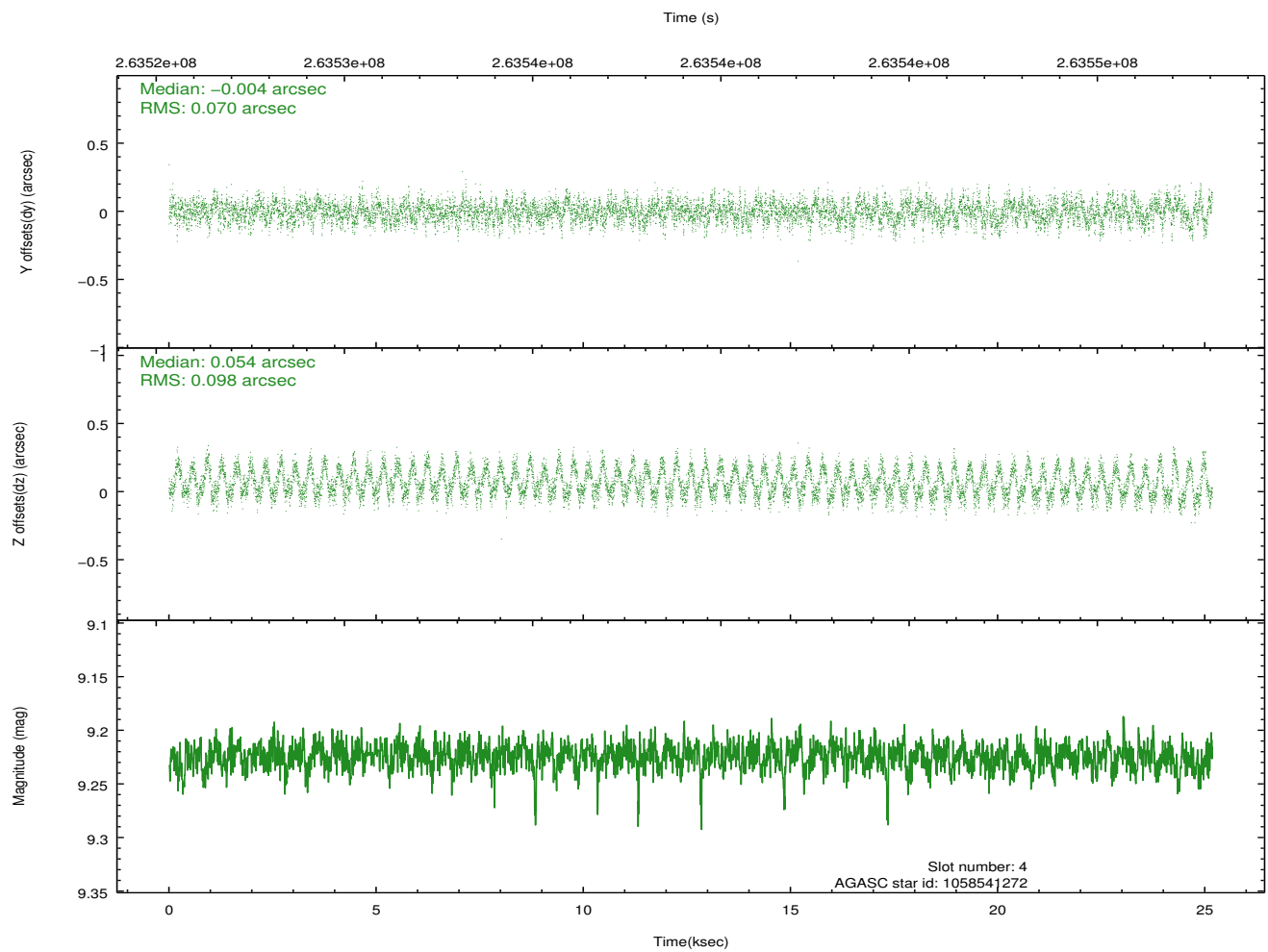
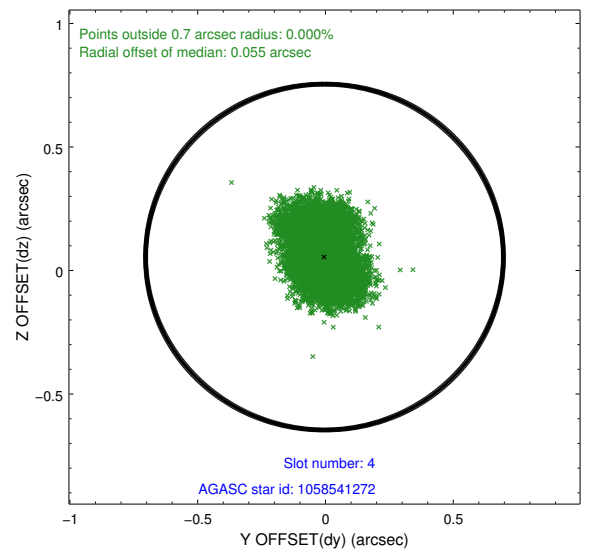
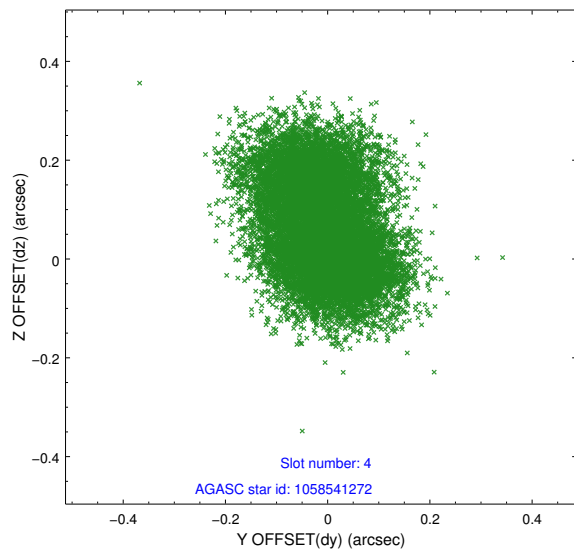
slot	status	id	mag	n_pts	med_dy	med_dz	dr1	dr2	ra	dec	mean_y	mean_z
0	FID	ACIS-S-2	7.10	6142	-0.005	-0.038	0.007	0.012	0.000000	0.000000	-761.03	-1733.77
1	FID	ACIS-S-4	7.20	6142	0.104	0.013	0.009	0.016	0.000000	0.000000	2152.31	174.63
2	FID	ACIS-S-5	7.23	6142	-0.130	0.034	0.010	0.016	0.000000	0.000000	-1813.84	168.47
3	GUIDE	1058537632	9.85	12268	-0.041	0.024	0.117	0.189	68.291617	-47.025396	2049.59	-1708.84
4	GUIDE	1058541272	9.22	12274	-0.004	0.054	0.130	0.202	68.392275	-46.921735	1673.68	-1951.72
5	GUIDE	1058542336	9.62	12263	-0.005	0.025	0.112	0.183	69.740954	-46.597293	-1839.26	-1656.05
6	GUIDE	1058931064	9.49	12267	0.145	-0.162	0.121	0.194	69.760694	-47.722390	-193.18	2044.90
7	GUIDE	1058933024	10.27	12255	-0.101	0.048	0.188	0.336	69.178616	-47.903448	1357.60	2056.16

2.4 Star Slots

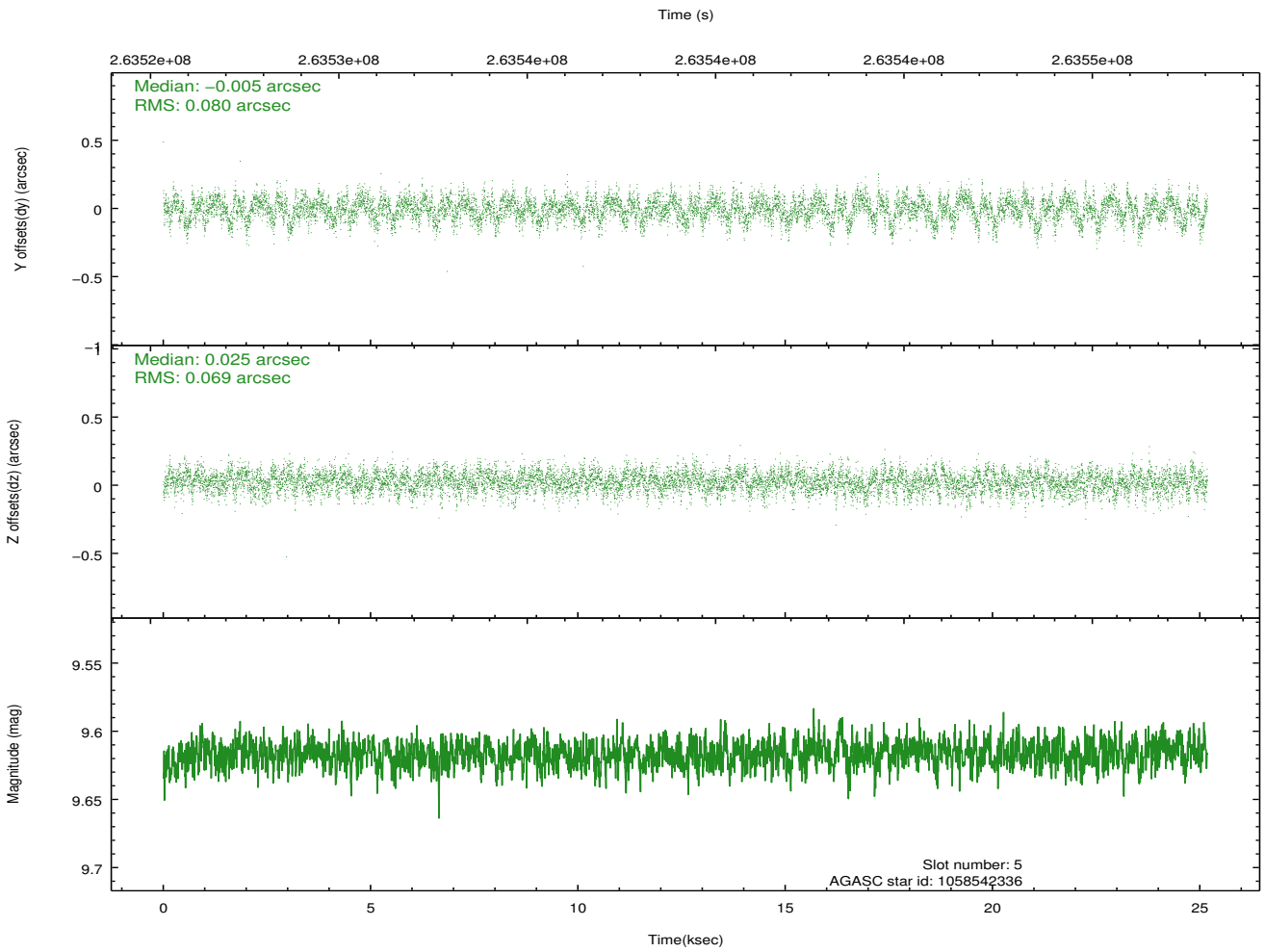
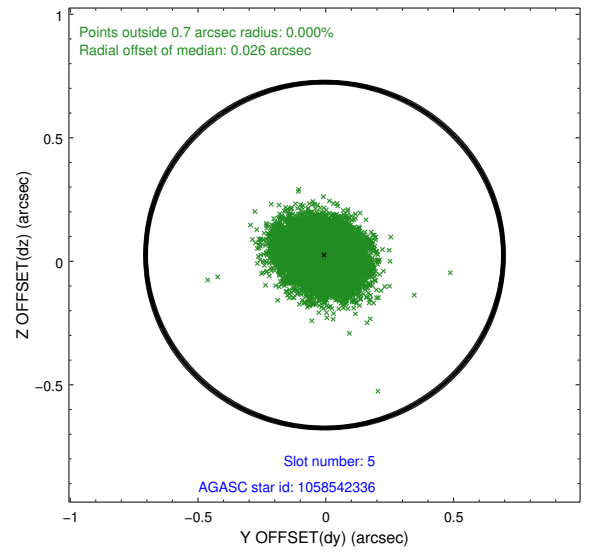
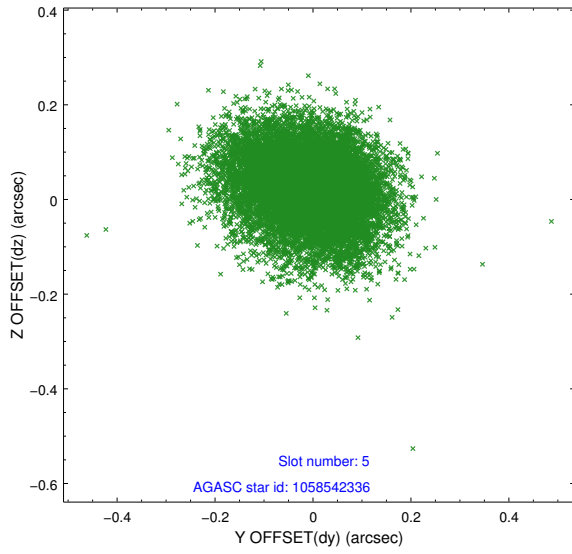
2.4.1 Slot 3



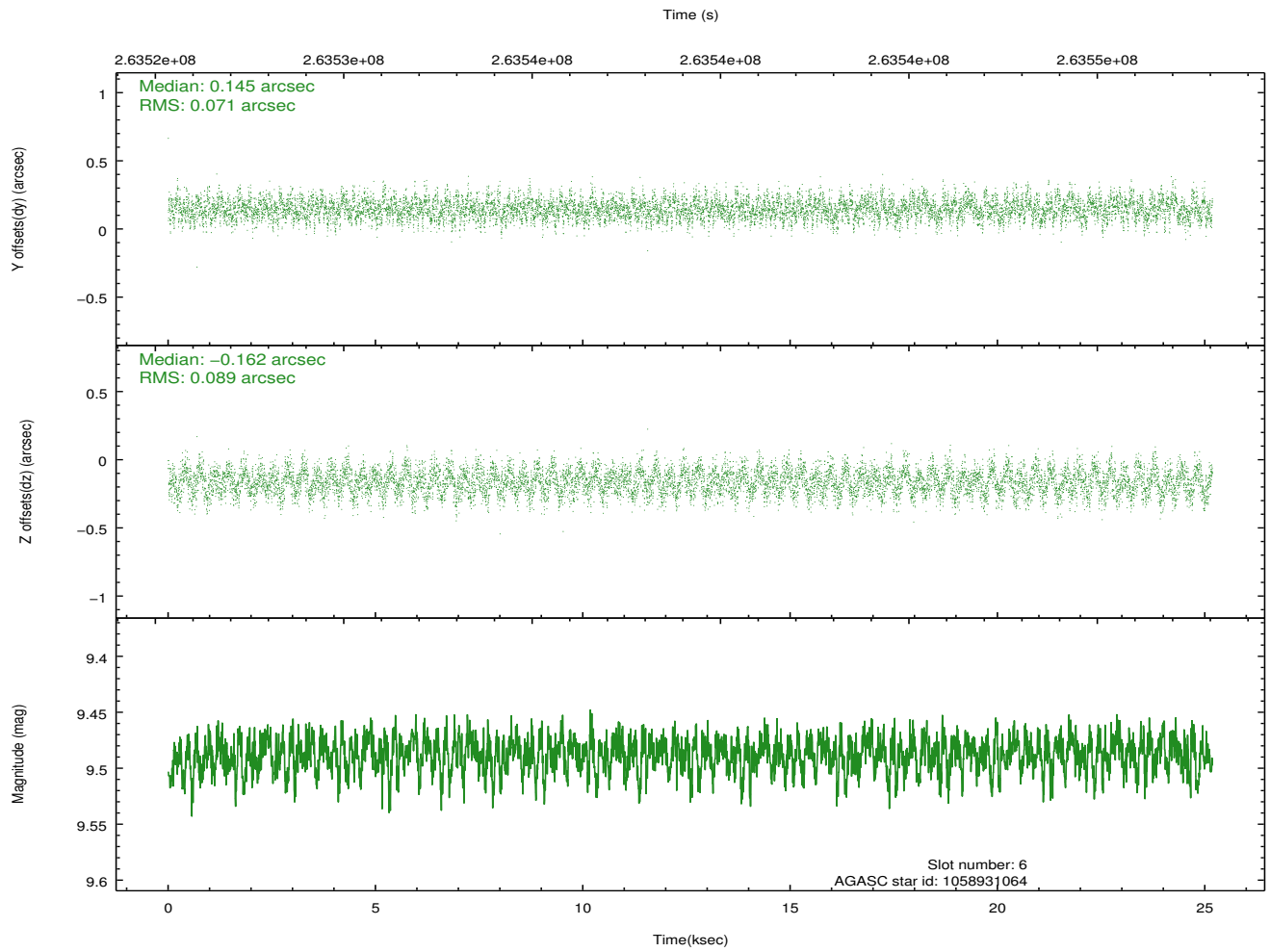
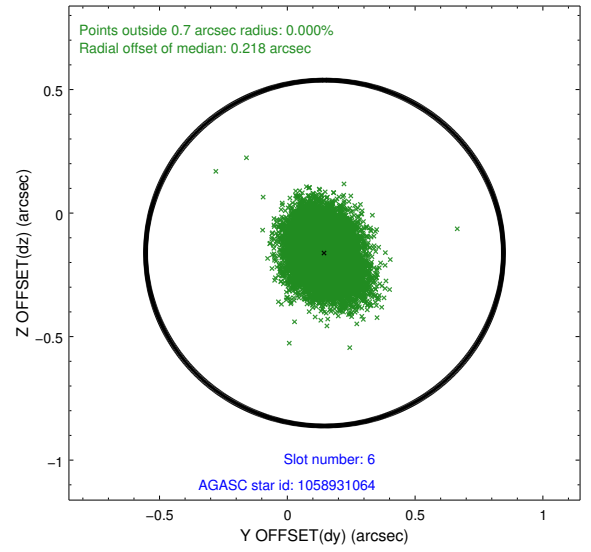
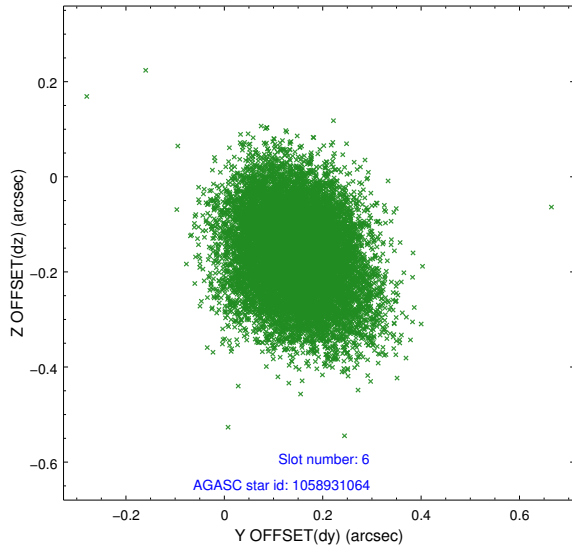
2.4.2 Slot 4



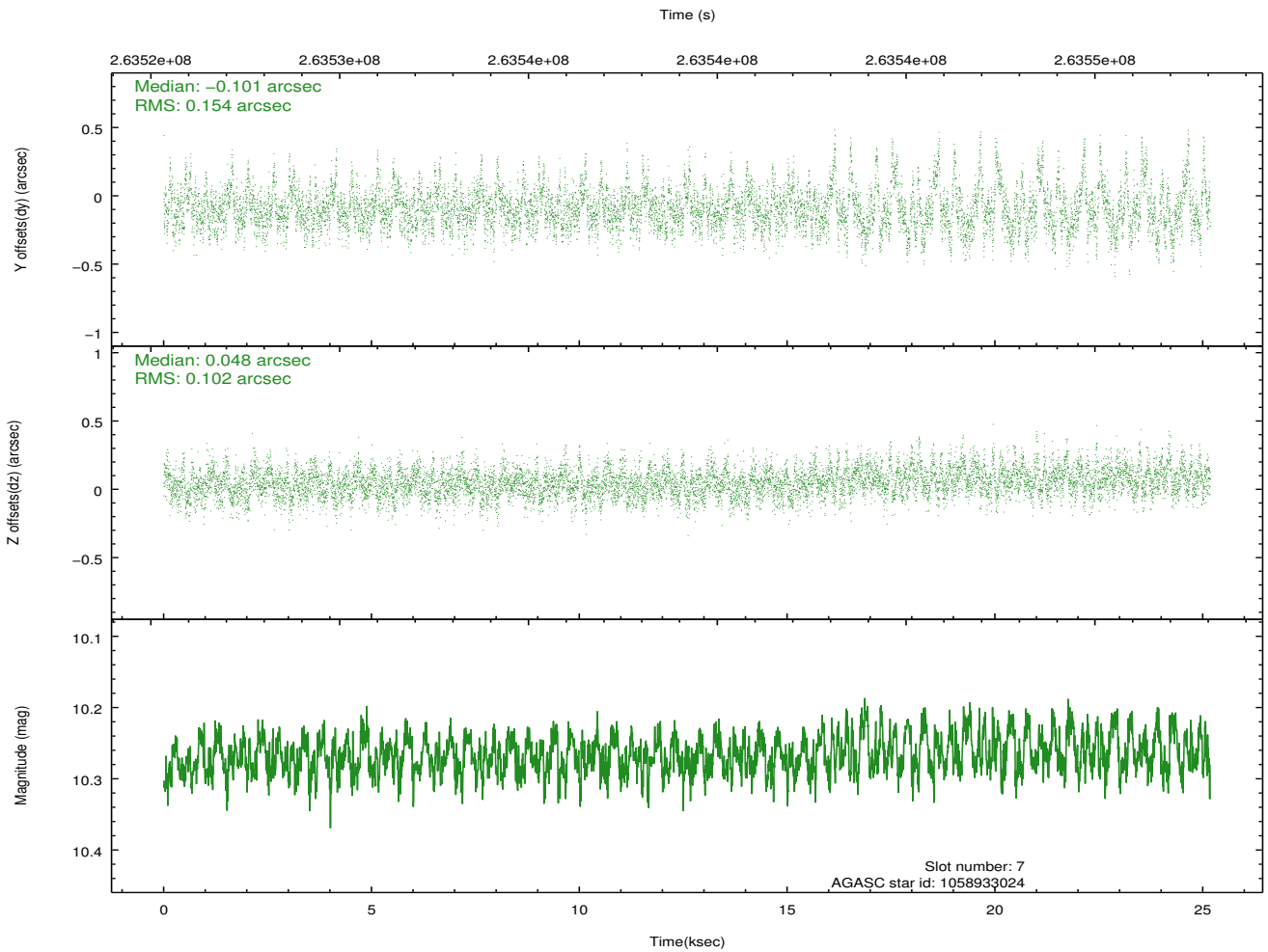
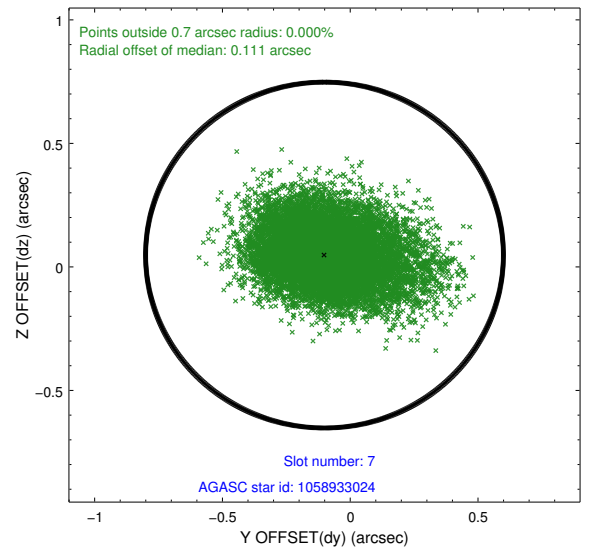
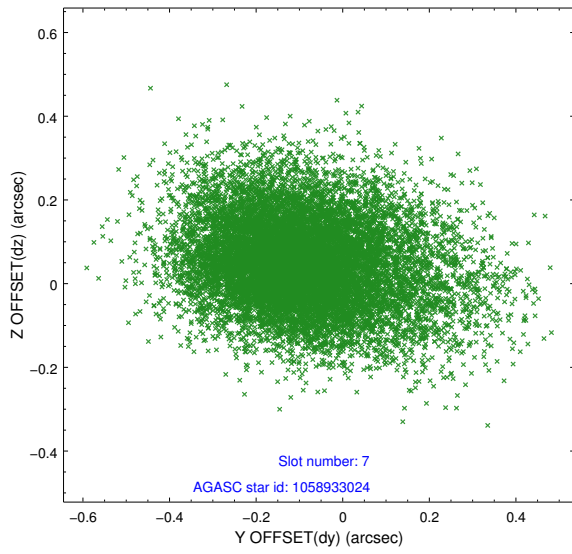
2.4.3 Slot 5



2.4.4 Slot 6

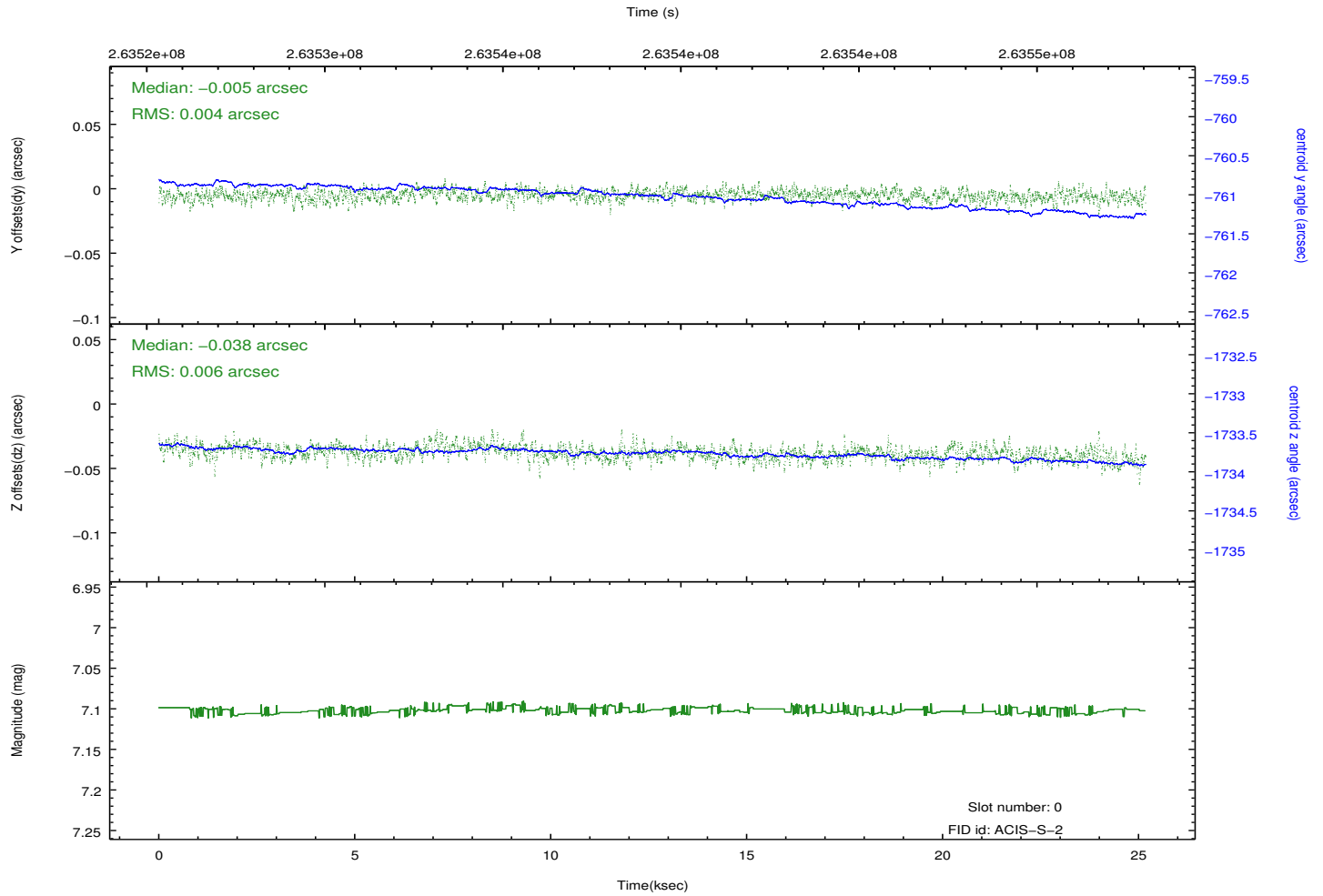
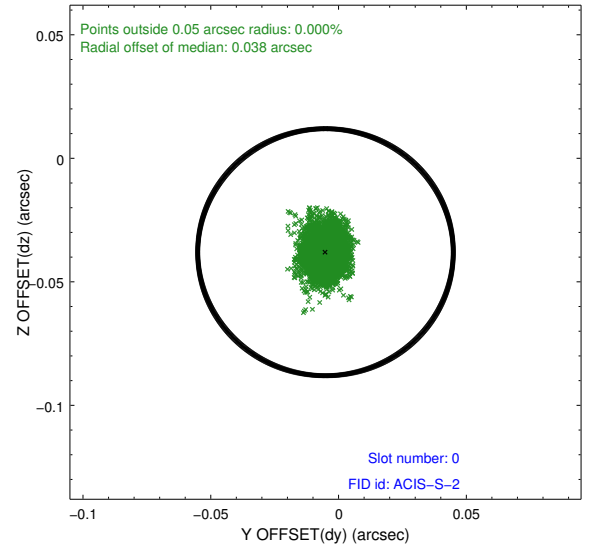
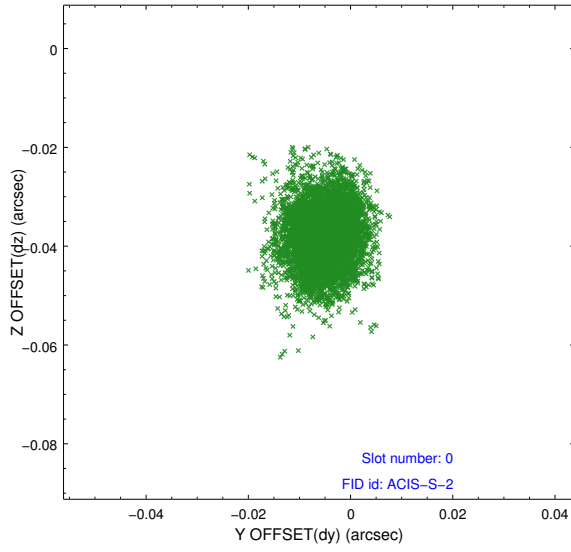


2.4.5 Slot 7

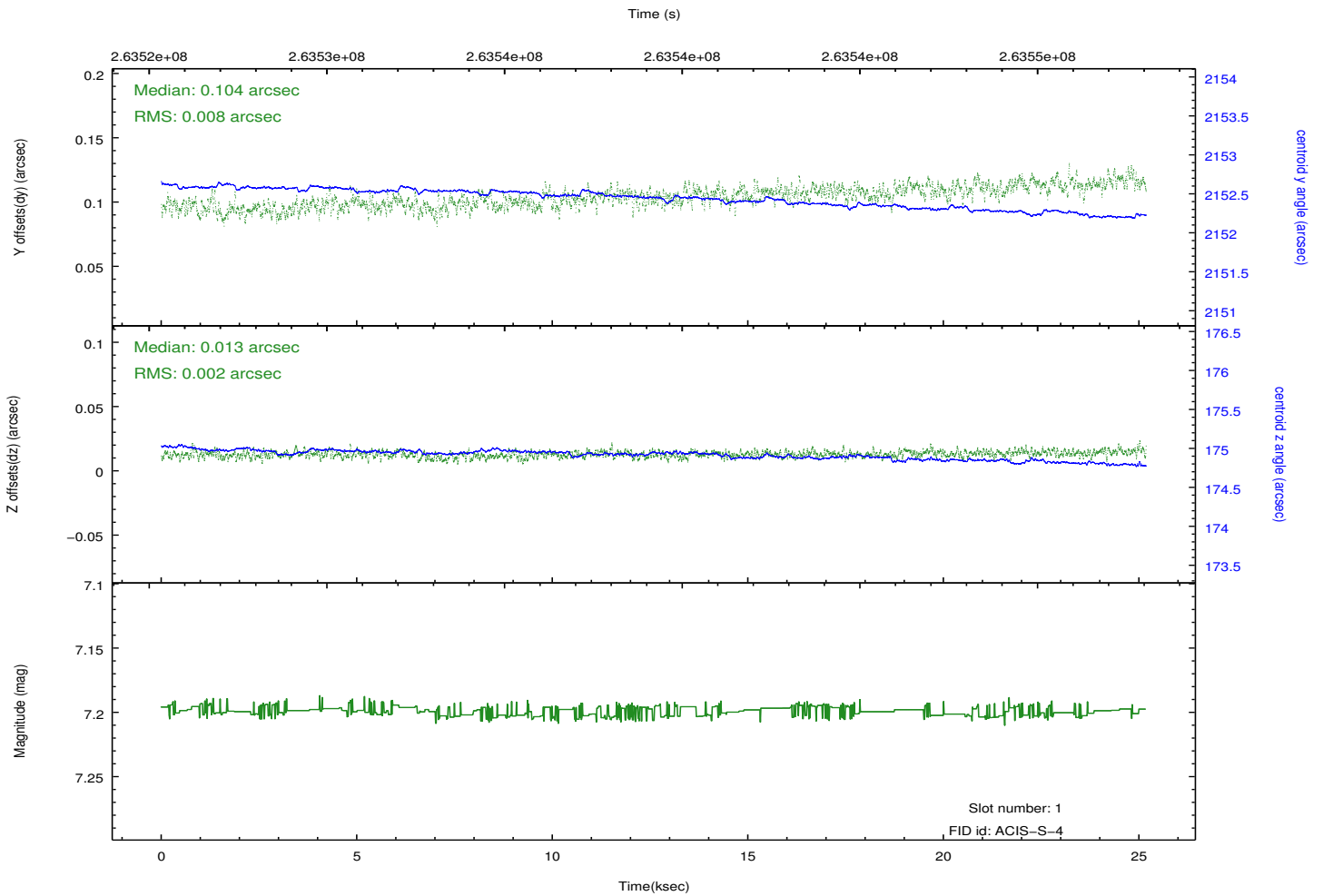
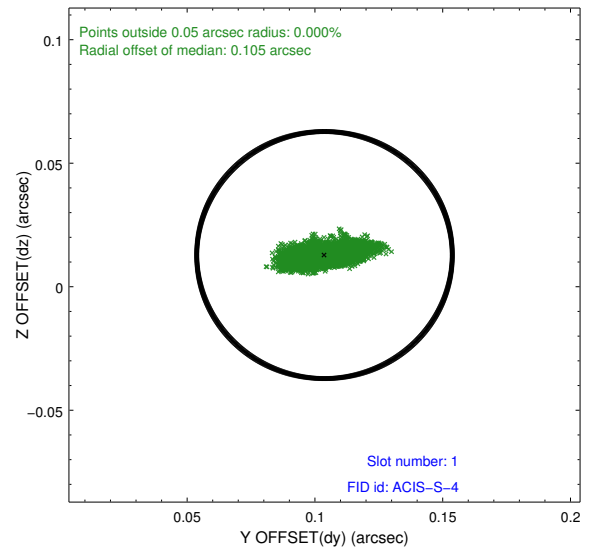
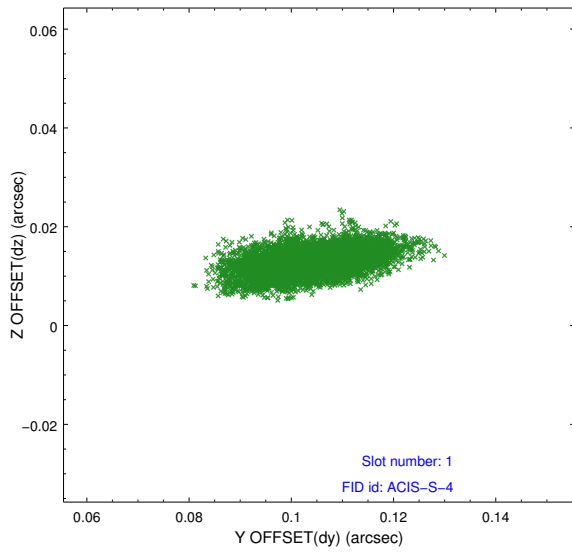


2.5 FID Slots

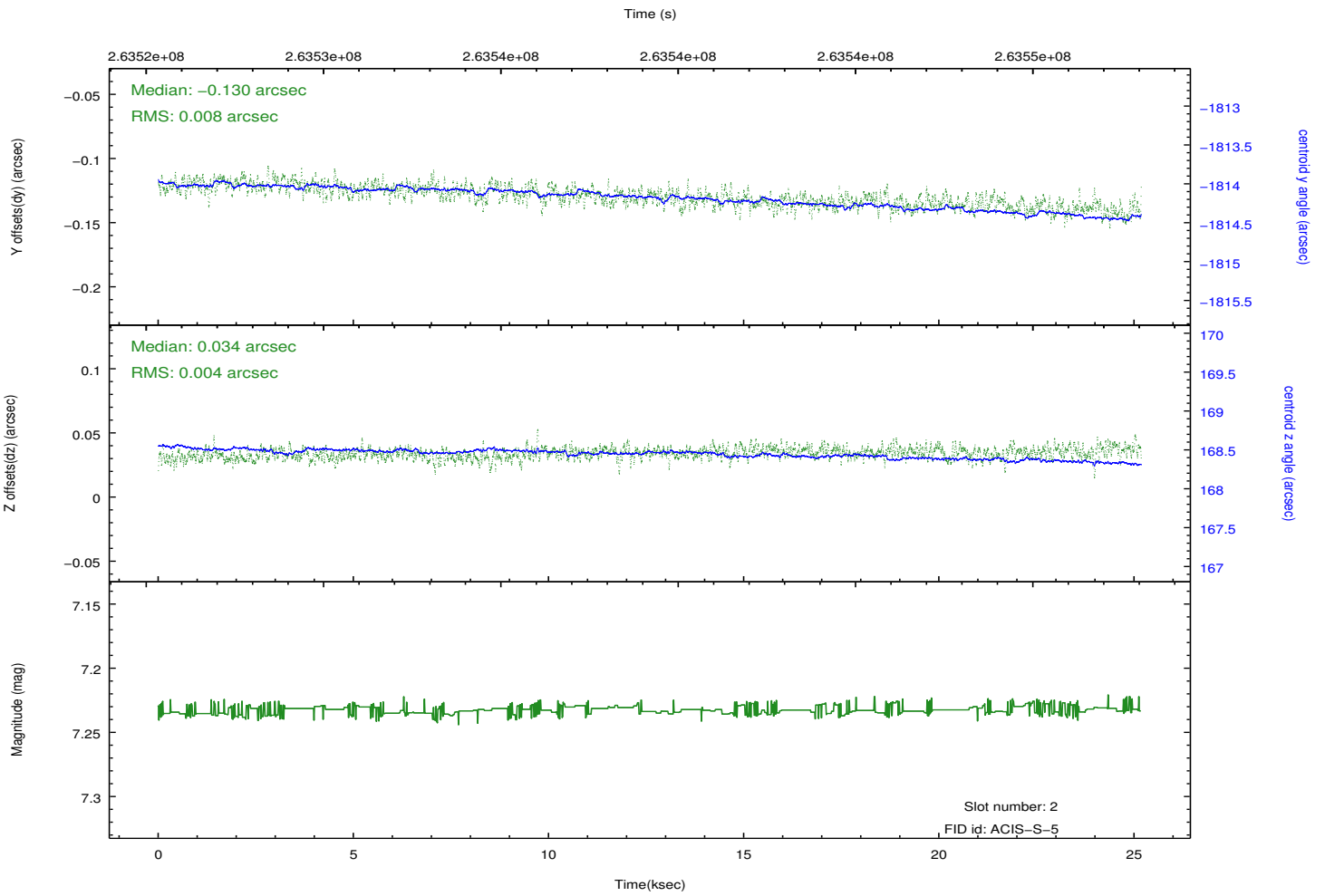
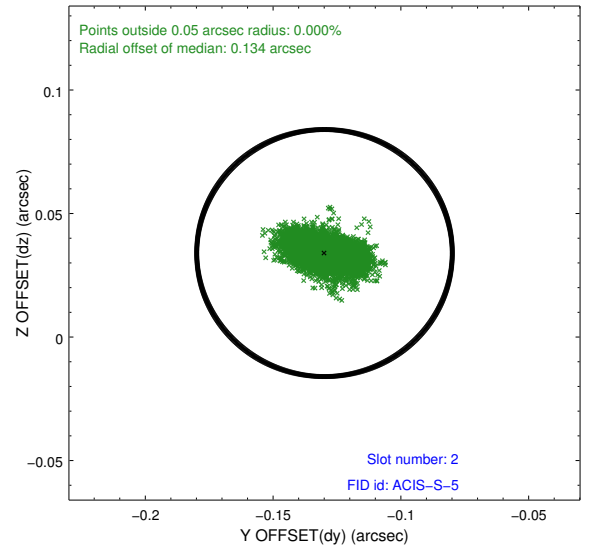
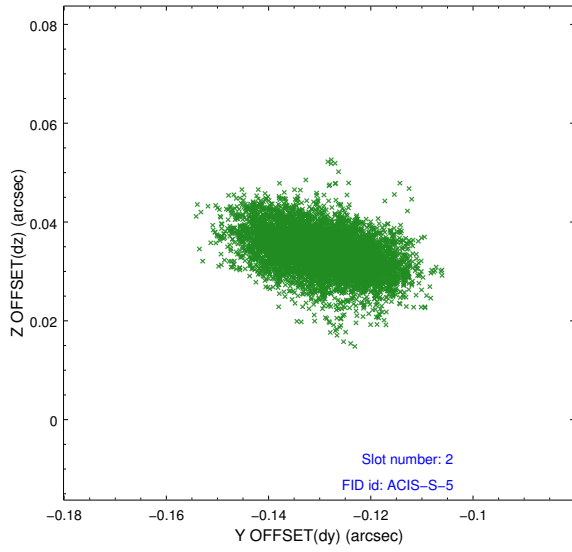
2.5.1 Slot 0



2.5.2 Slot 1



2.5.3 Slot 2



A Summary

A.1 Status

V&V Scientist	Jen Lauer
V&V Date (YYYY-MM-DD)	2012.04.02
V&V Edition	1
V&V Disposition and Status	OK
V&V Charge Time	24.86225

A.2 Comments

There is a streak of increased count rate crosses the subarray at and $x=615$ and $y=511$ physical coordinates. This streak is not near the source and does not affect the source. It is the frame-transfer streak from a bright source on S3, but out of the sub-array.