

V&V Reference Report

L2 ASCDS Version : 8.4.3.1

Observation 6978 - L2 Version 2
Chandra X-Ray Center

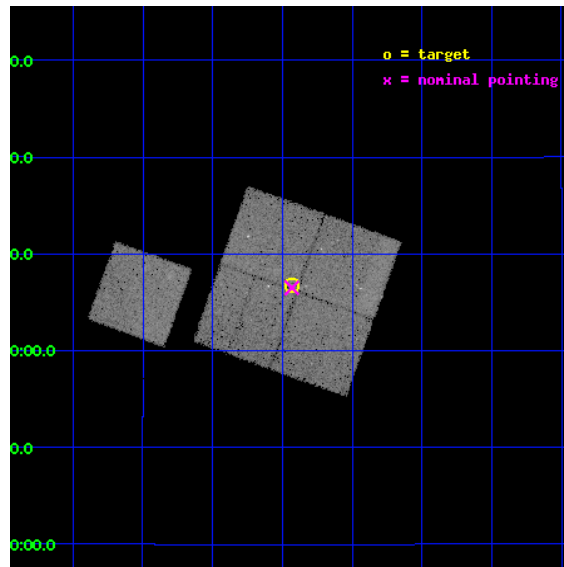
L2 Processing Date : Apr 14 2012

Contents

1	Front	2
2	OBI	3
2.1	OBI	3
2.1.1	Images	3
2.1.2	Bias	3
2.1.3	Parameters	4
2.1.4	Events	4
2.2	Compared Parameters	5
2.3	Aspect	6
2.4	Star Slots	9
2.4.1	Slot 3	9
2.4.2	Slot 4	10
2.4.3	Slot 5	11
2.4.4	Slot 6	12
2.4.5	Slot 7	13
2.5	FID Slots	14
2.5.1	Slot 0	14
2.5.2	Slot 1	15
2.5.3	Slot 2	16
A	Summary	17
A.1	Status	17
A.2	Comments	17

1 Front

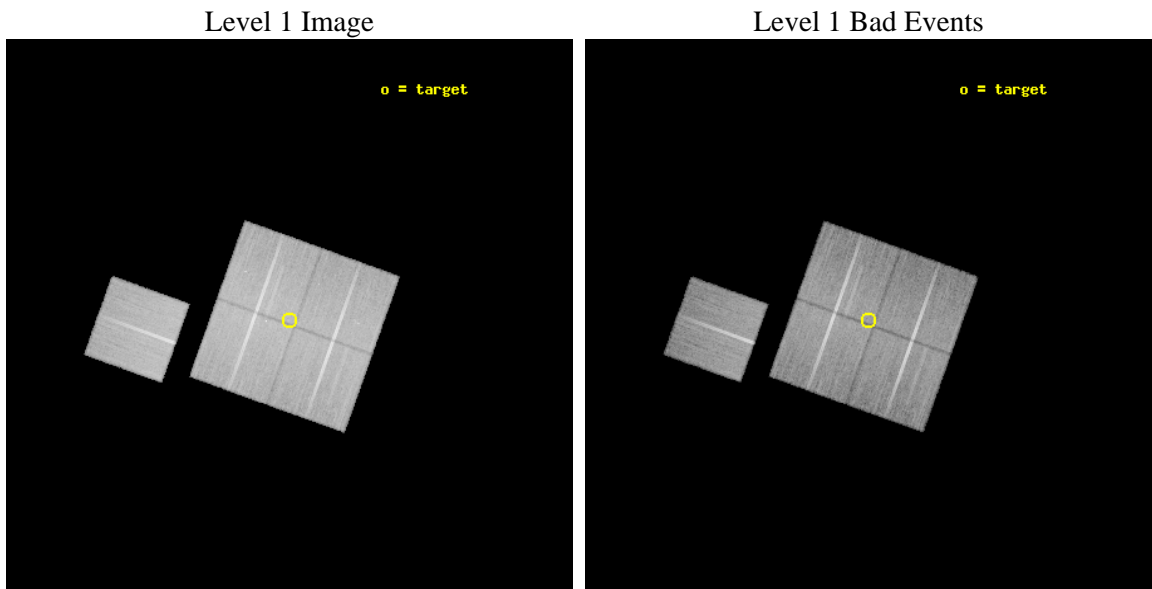
seq_num	800610	Sequence number
obs_id	6978	Observation id
title	HI-deficient ultracompact groups	Proposal title
observer	Prof Trevor Ponman	Principal investigator
object	HCG 100	Source name
dtcycle	0	
cycle	P	events from which exps? Prim/Second/Both
ra_targ	0.358333	Observer's specified target RA [deg]
dec_targ	13.113056	Observer's specified target Dec [deg]
ra_nom	0.35807573382023	Nominal RA [deg]
dec_nom	13.108421322587	Nominal Dec [deg]
roll_nom	289.70874859408	Nominal Roll [deg]
revision	2	Processing version of data
ontime	28169.659226298	Sum of GTIs [s]
livetime	27801.601890305	Livetime [s]
ontime0	28169.659236372	Sum of GTIs [s]
ontime1	28153.954244971	Sum of GTIs [s]
ontime2	28172.800216675	Sum of GTIs [s]
ontime3	28169.659226298	Sum of GTIs [s]
ontime6	28169.659226358	Sum of GTIs [s]
l2events	103657	Number of level 2 events



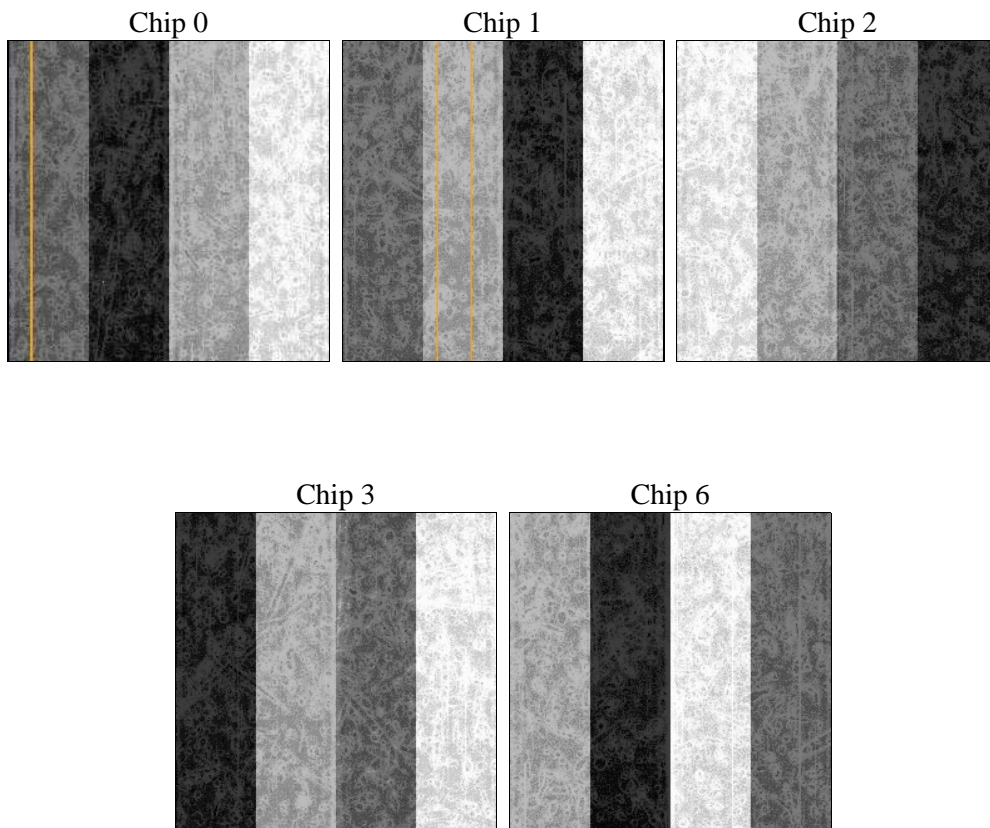
2 OBI

2.1 OBI

2.1.1 Images



2.1.2 Bias



2.1.3 Parameters

obi_num	0	Obi number	sched_exp_time	28000.000000	[s] Scheduled observation exposure time
ascdsver	8.4.3.1	Processing system revision	ontime	28169.659226298	Sum of GTIs [s]
caldsver	4.4.9	 	ontime0	28169.659236372	Sum of GTIs [s]
date	2012-04-14T17:52:15	Date and time of file creation	ontime1	28153.954244971	Sum of GTIs [s]
revision	2	Processing version of data	ontime2	28172.800216675	Sum of GTIs [s]
			ontime3	28169.659226298	Sum of GTIs [s]
			ontime6	28169.659226358	Sum of GTIs [s]
			l1events	1184993	Number of level 1 events

2.1.4 Events

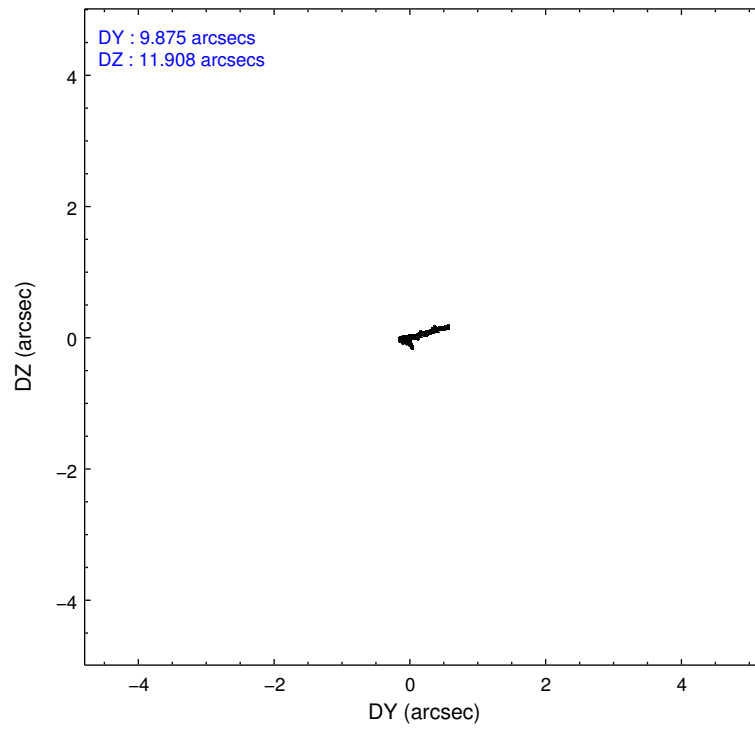
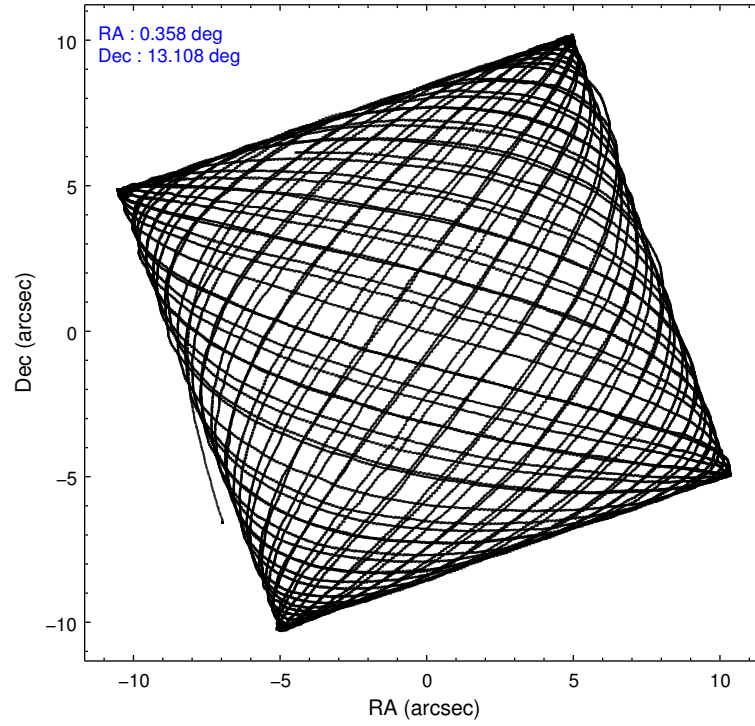
	ccd 0	ccd 1	ccd 2	ccd 3	ccd 6
level 1 events	227374	220545	253830	240065	243179
rejected events	203168	192691	229705	216779	217694
rejected %	89%	87%	90%	90%	89%

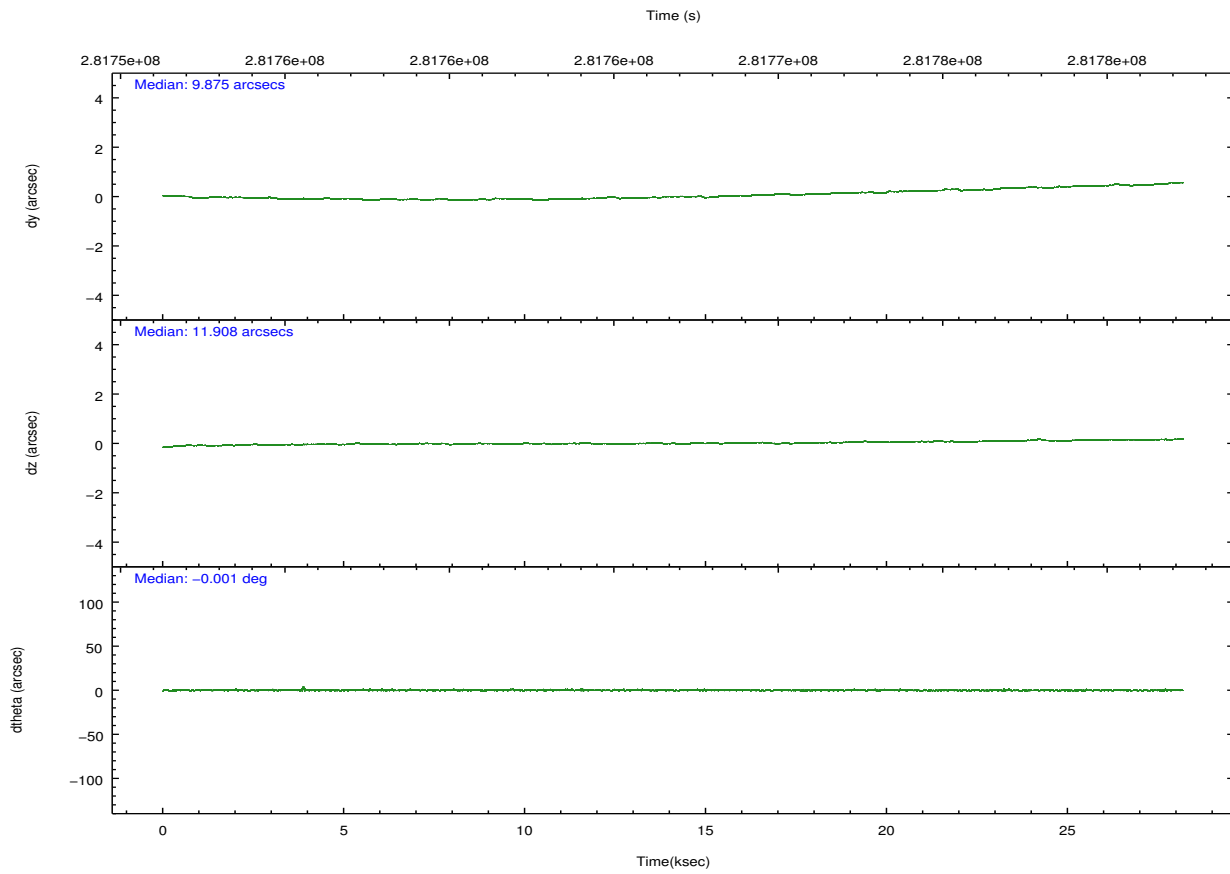
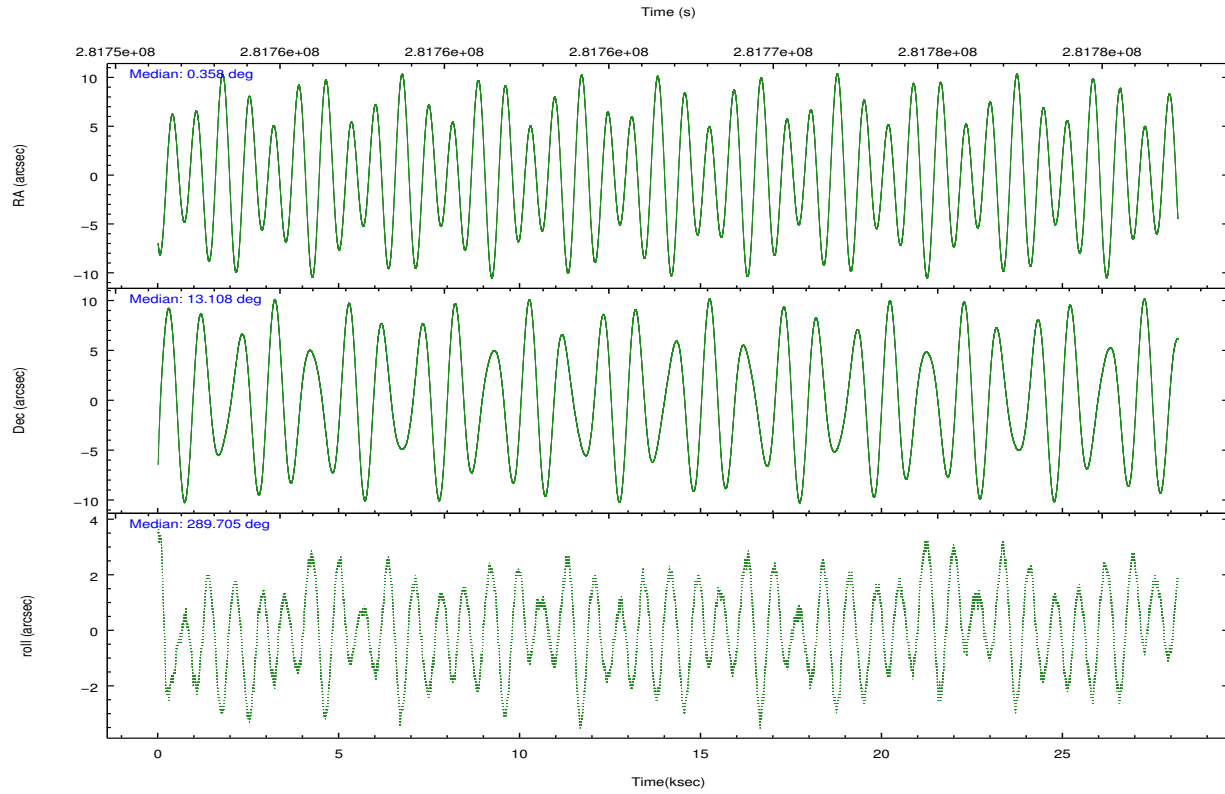
	ccd 0	ccd 1	ccd 2	ccd 3	ccd 6
grade 0 events	8692	10804	9201	8640	9309
	3%	4%	3%	3%	3%
grade 1 events	145	129	152	153	120
	0%	0%	0%	0%	0%
grade 2 events	5805	5945	5652	4924	5438
	2%	2%	2%	2%	2%
grade 3 events	2705	2951	2394	2527	2672
	1%	1%	0%	1%	1%
grade 4 events	2496	2826	2554	2544	2683
	1%	1%	1%	1%	1%
grade 5 events	7417	8255	7160	9176	8715
	3%	3%	2%	3%	3%
grade 6 events	4598	5445	4419	4751	5489
	2%	2%	1%	1%	2%
grade 7 events	195516	184190	222298	207350	208753
	85%	83%	87%	86%	85%

2.2 Compared Parameters

Parameter	Planned	Actual	Parameter	Planned	Actual
Instrument	ACIS	ACIS	Obspar format version number	7	7
Detector	ACIS-01236	ACIS-01236	Obspar file type	PREDICTED	ACTUAL
Grating	NONE	NONE	Obspar update status	NONE	UPDATED
Data mode	VFAINT	VFAINT	Number of optional ACIS chips dropped	0	0
Observation mode	POINTING	POINTING	On-chip summing requested	N	N
[deg] Pointing RA	0.336543	0.3580757338202254	Subarray requested	NONE	NONE
[deg] Pointing Dec	13.126056	13.10842132258673	Alternating exposures requested	N	N
[deg] Pointing Roll	289.504947	289.7087485940822	[s] Primary exposure time	0.000000	3.1
[mm] SIM focus pos	-0.782348	-0.7809083437167272			
[mm] SIM defocus	0	0.001439871863259334			
[mm] SIM translation stage pos	-233.592463	-233.5874344608287			
[mm] SIM translation stage offset	0	-0.005018542100998502			
[s] Observation start time (MET)	281752897.184000	281751849.92384			
Observation start date	2006-12-06T00:40:32	2006-12-06T00:24:09			
[s] Observation end time (MET)	281780897.184000	281782210.42528			
Observation end date	2006-12-06T08:27:12	2006-12-06T08:50:10			
Read mode	TIMED	TIMED			

2.3 Aspect



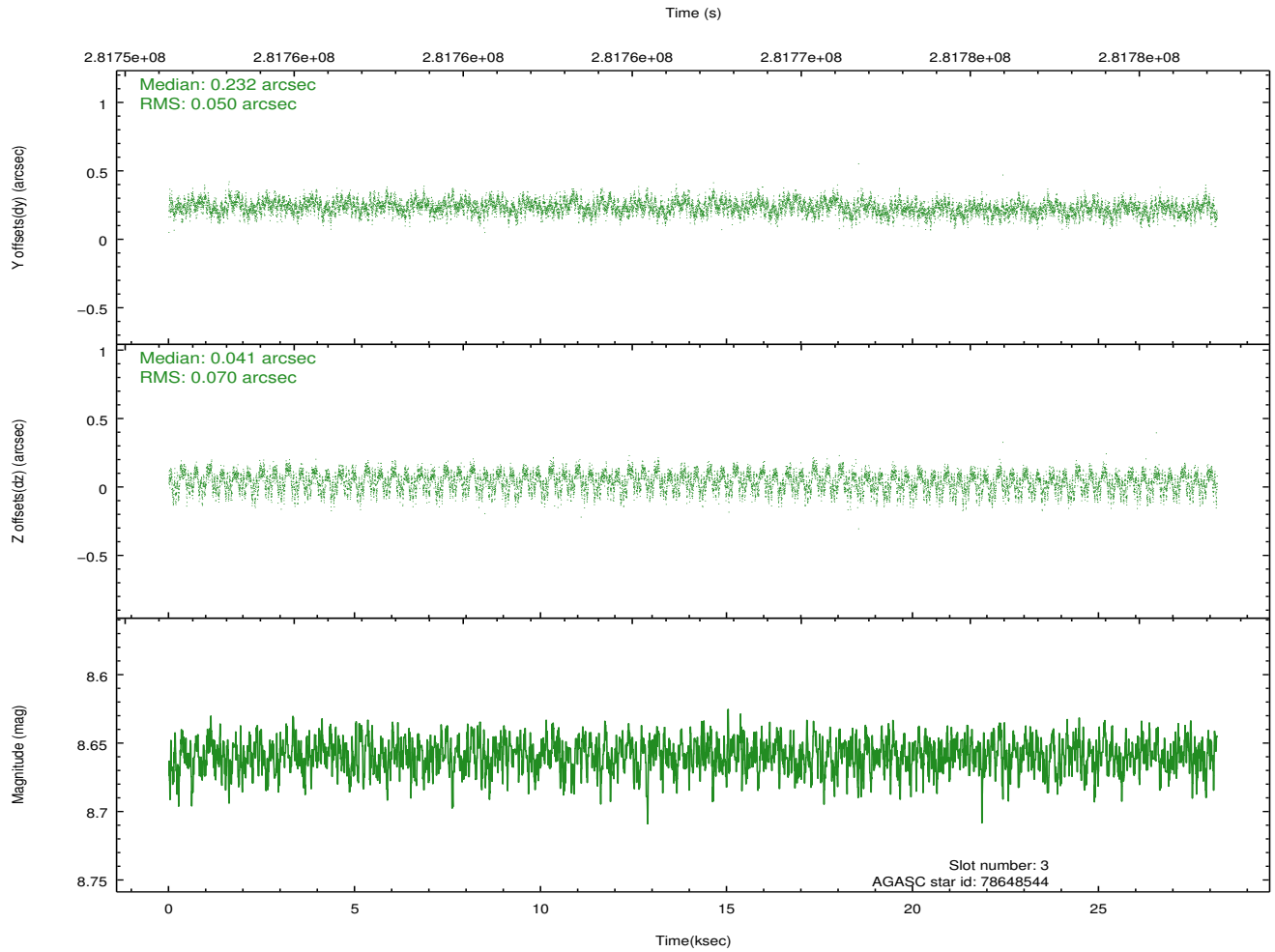
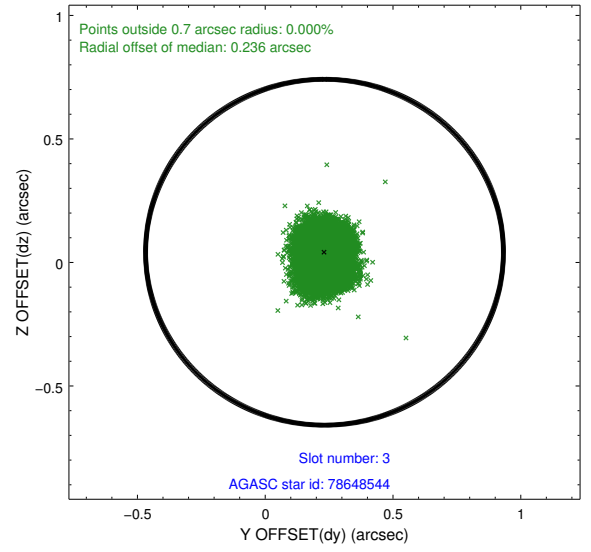
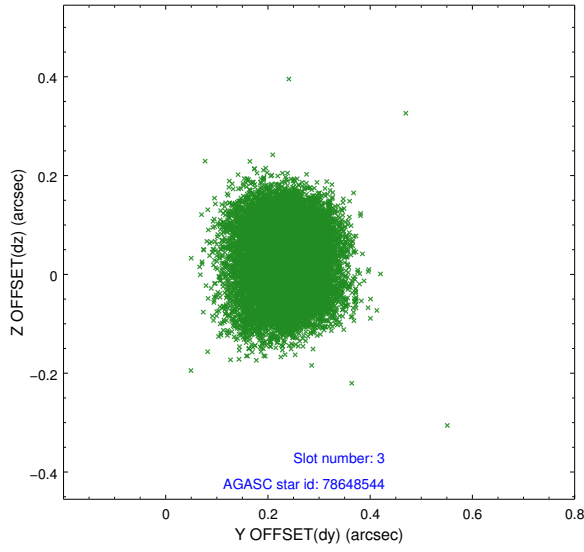


Slot Statistics

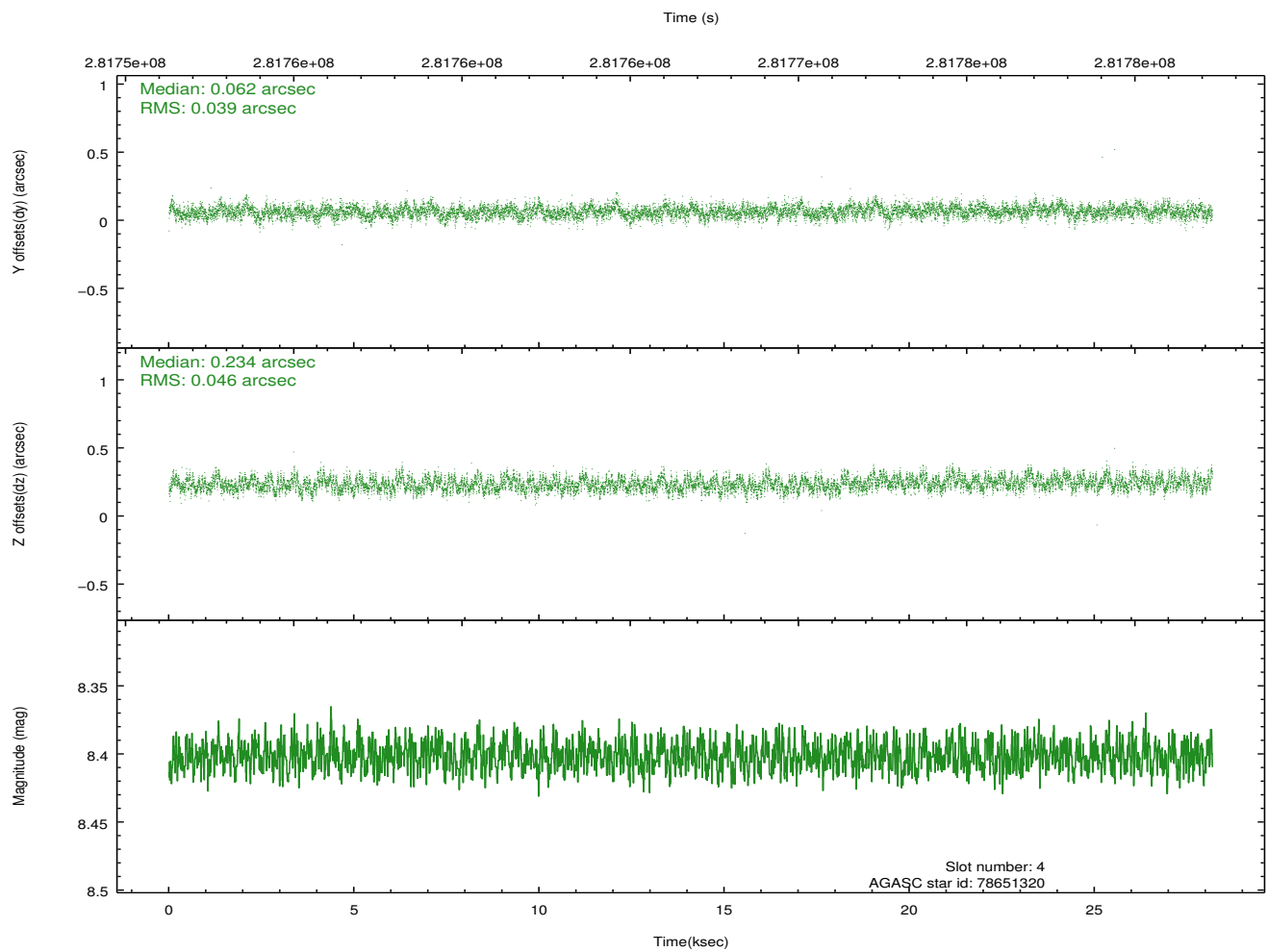
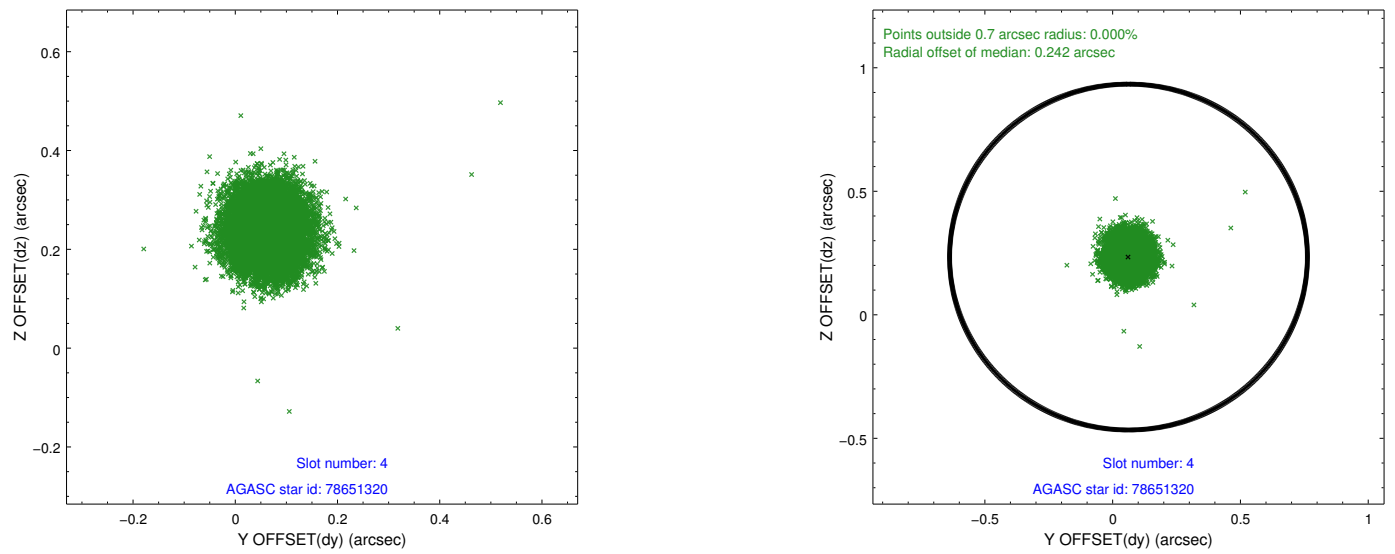
slot	status	id	mag	n_pts	med_dy	med_dz	dr1	dr2	ra	dec	mean_y	mean_z
0	FID	ACIS-I-1	7.24	6872	0.079	-0.054	0.015	0.027	0.000000	0.000000	929.70	-835.52
1	FID	ACIS-I-5	7.23	6872	-0.236	0.071	0.012	0.023	0.000000	0.000000	-1818.63	1062.11
2	FID	ACIS-I-6	7.25	6872	0.065	0.051	0.011	0.021	0.000000	0.000000	395.19	1706.64
3	GUIDE	78648544	8.66	13744	0.232	0.041	0.093	0.144	1.089590	12.957290	1451.40	2291.43
4	GUIDE	78651320	8.40	13745	0.062	0.234	0.064	0.102	0.065955	13.461465	-1454.74	-489.16
5	GUIDE	78651728	8.06	13665	0.024	-0.117	0.067	0.109	0.927022	13.365161	-123.17	2237.87
6	GUIDE	78652416	7.77	13744	-0.018	-0.110	0.073	0.114	0.074555	13.312230	-938.54	-640.67
7	GUIDE	78649960	7.99	13741	-0.297	-0.045	0.070	0.117	0.677652	13.930677	-2333.75	2090.99

2.4 Star Slots

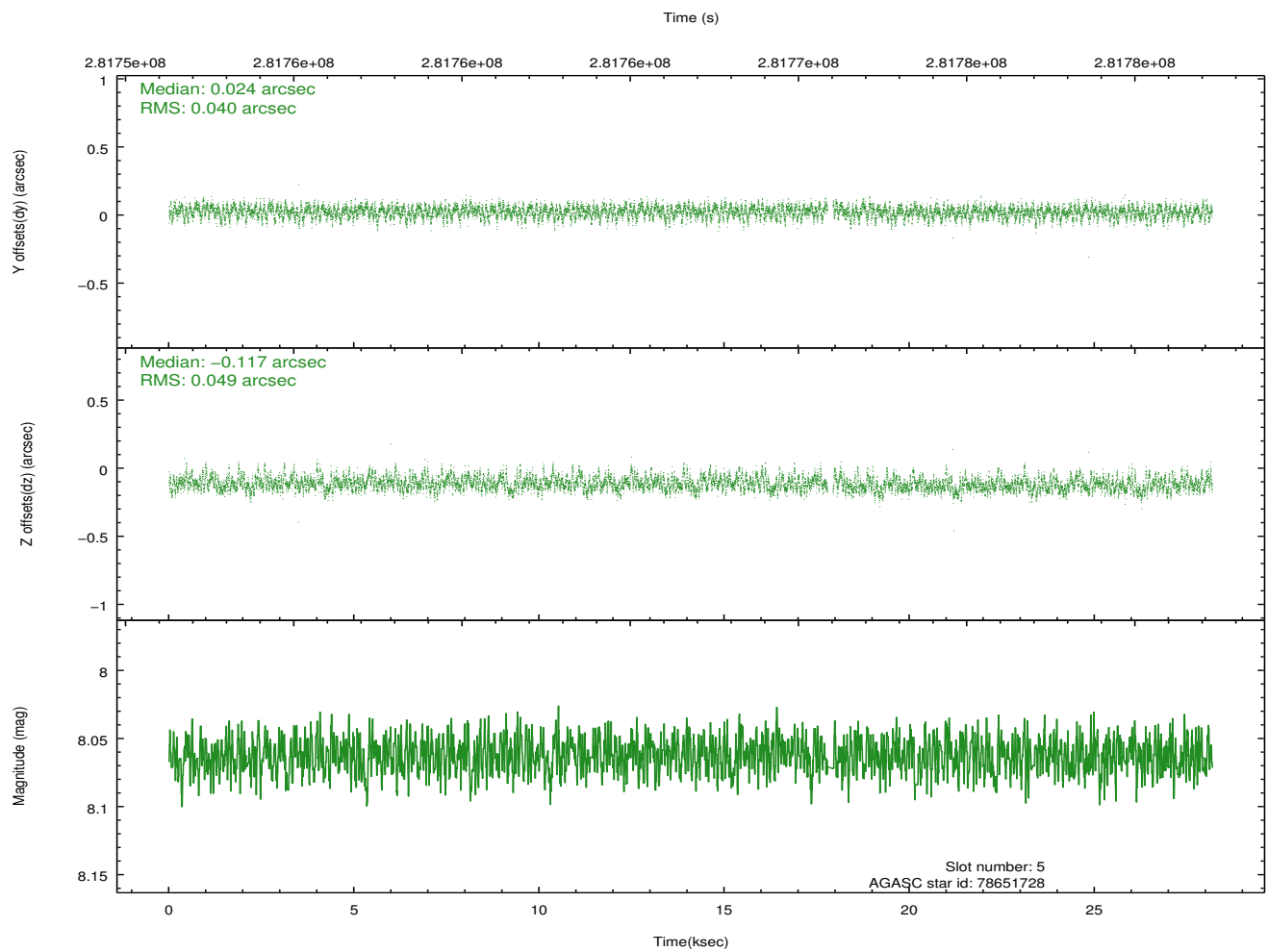
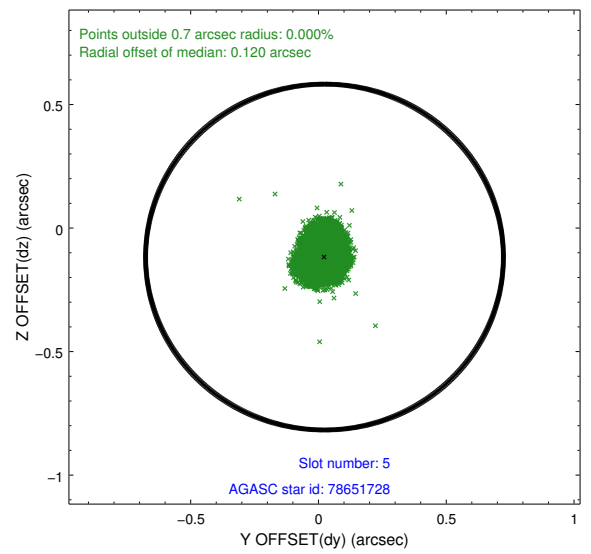
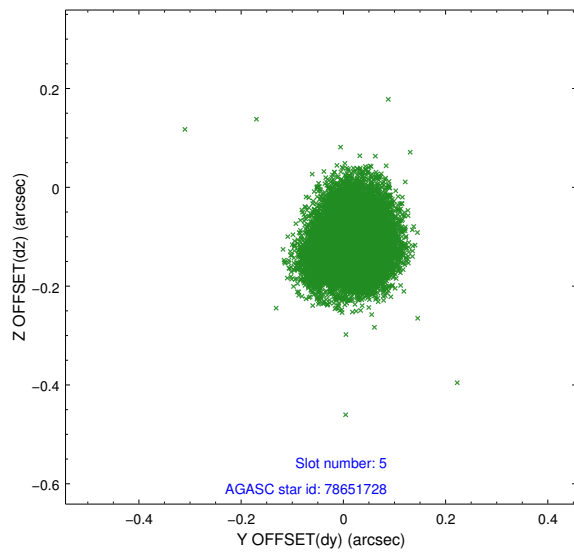
2.4.1 Slot 3



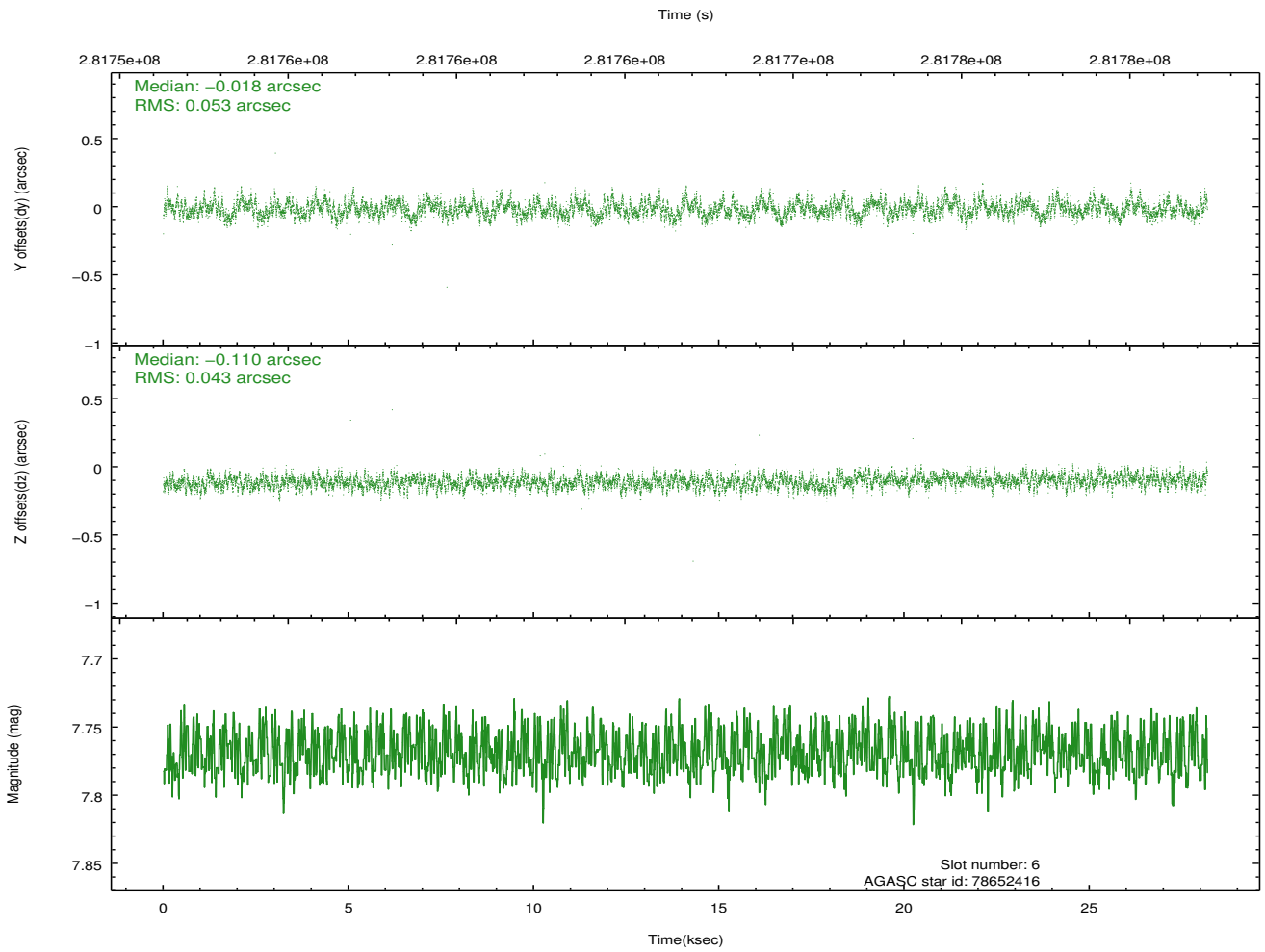
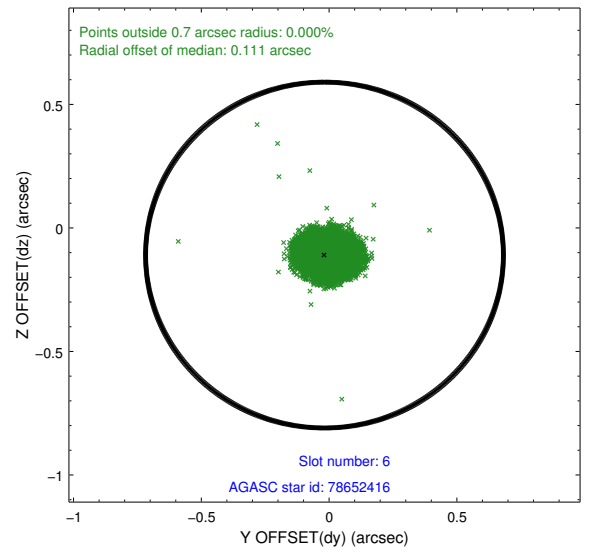
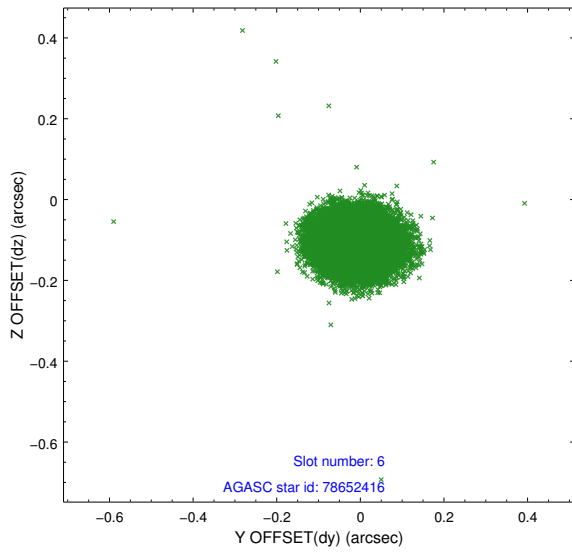
2.4.2 Slot 4



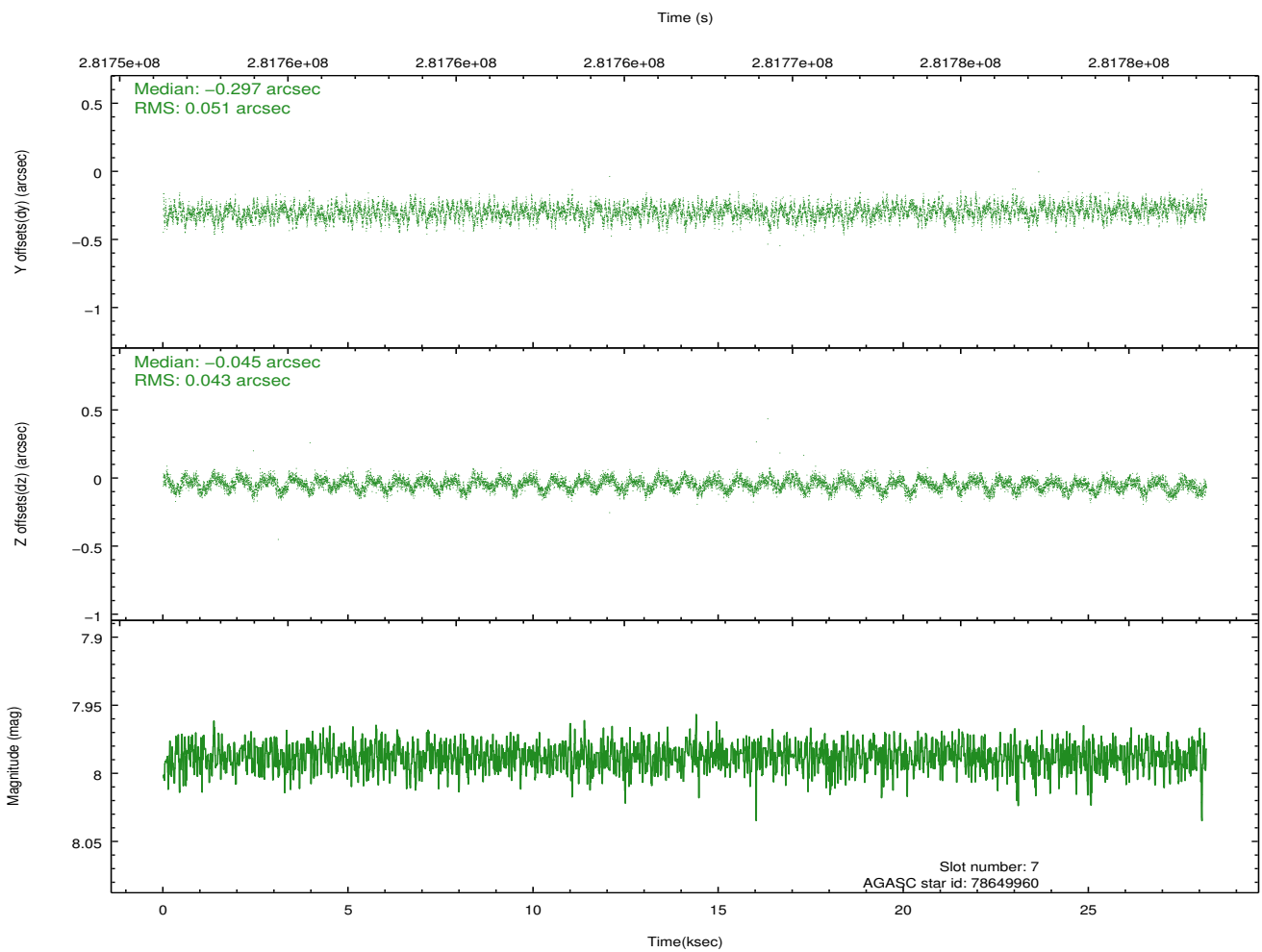
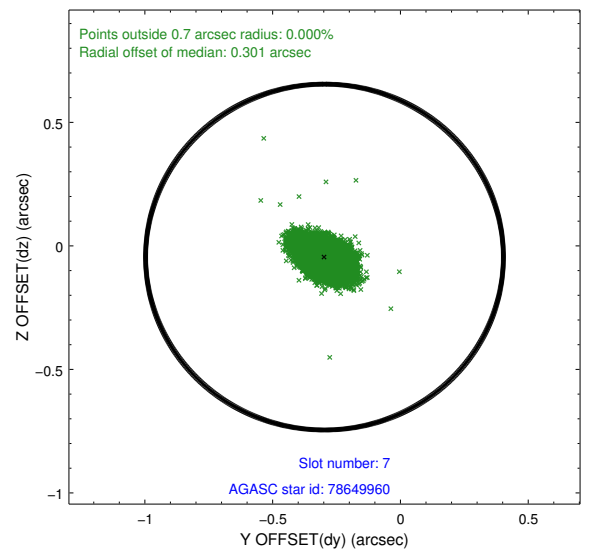
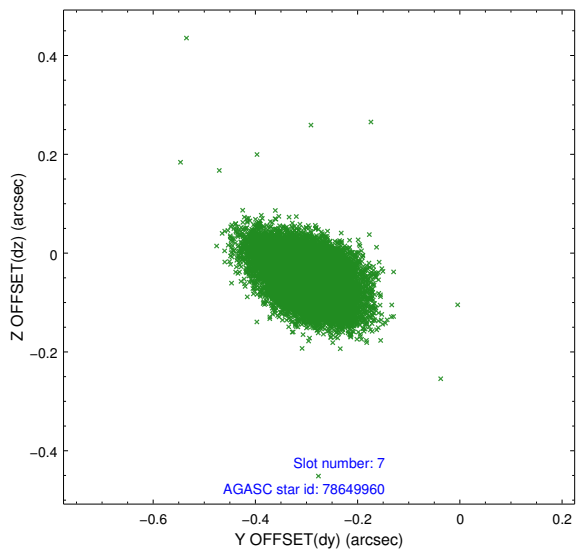
2.4.3 Slot 5



2.4.4 Slot 6

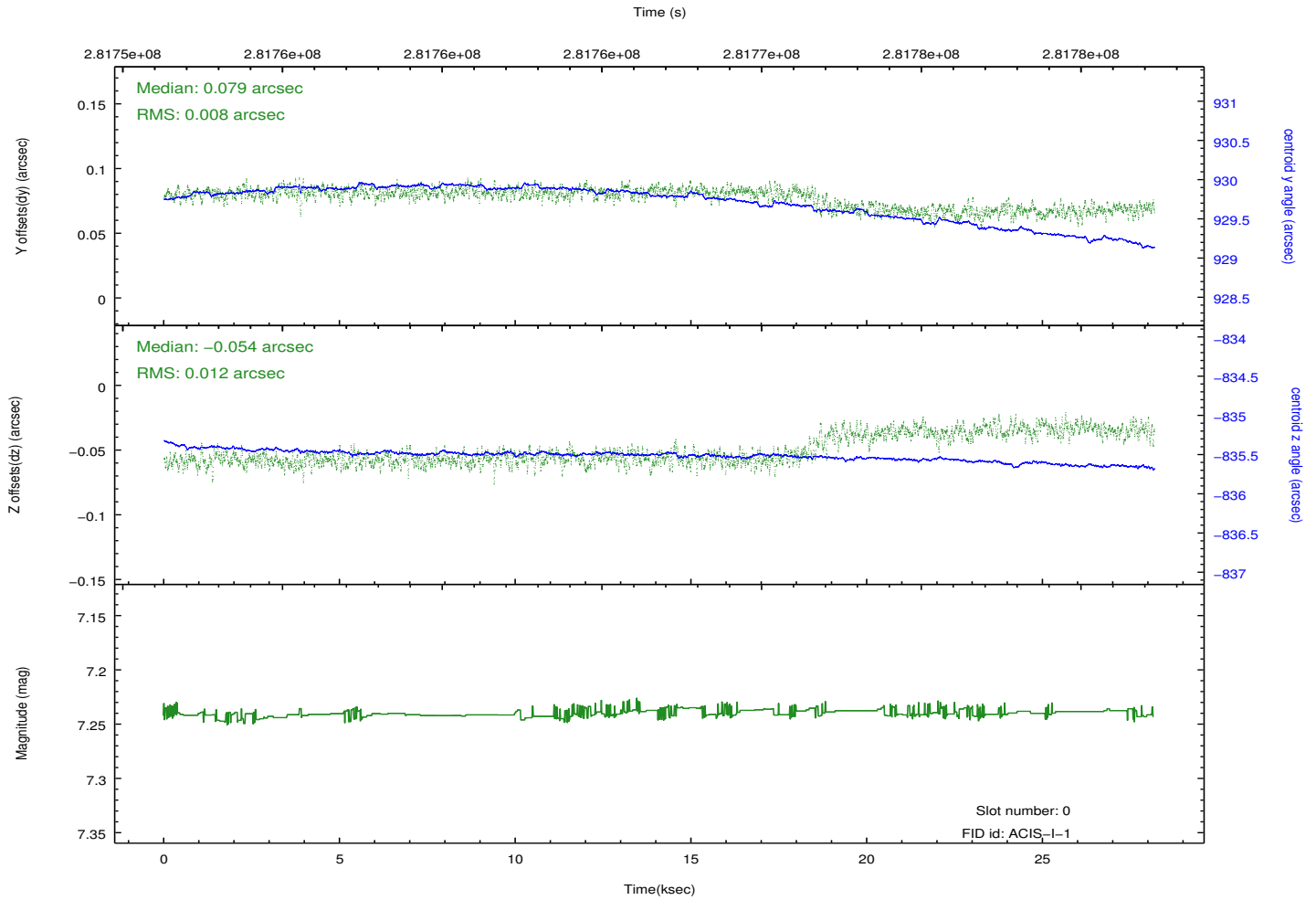
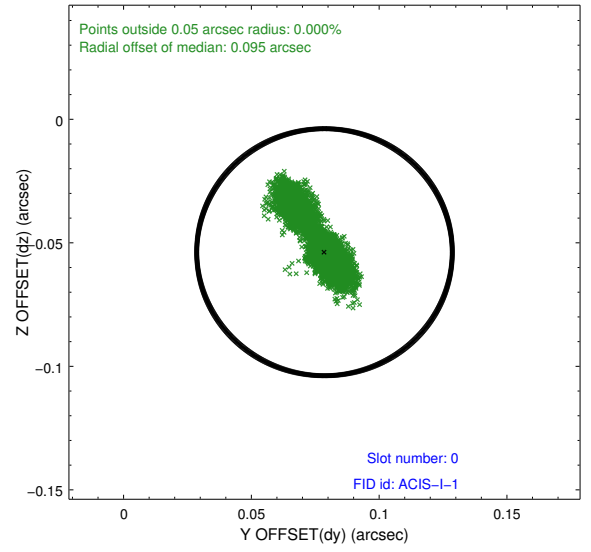
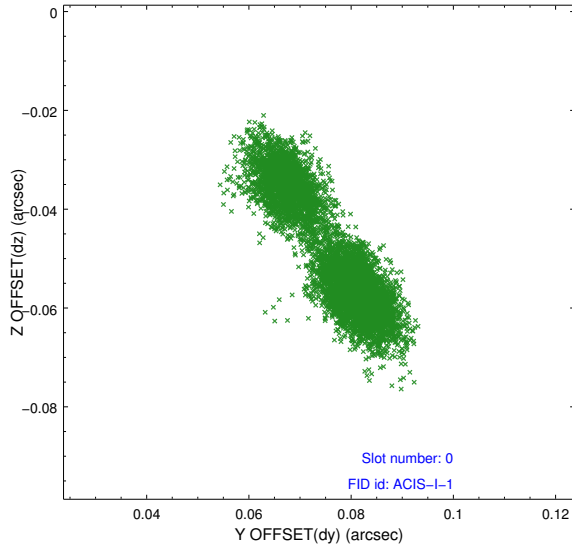


2.4.5 Slot 7

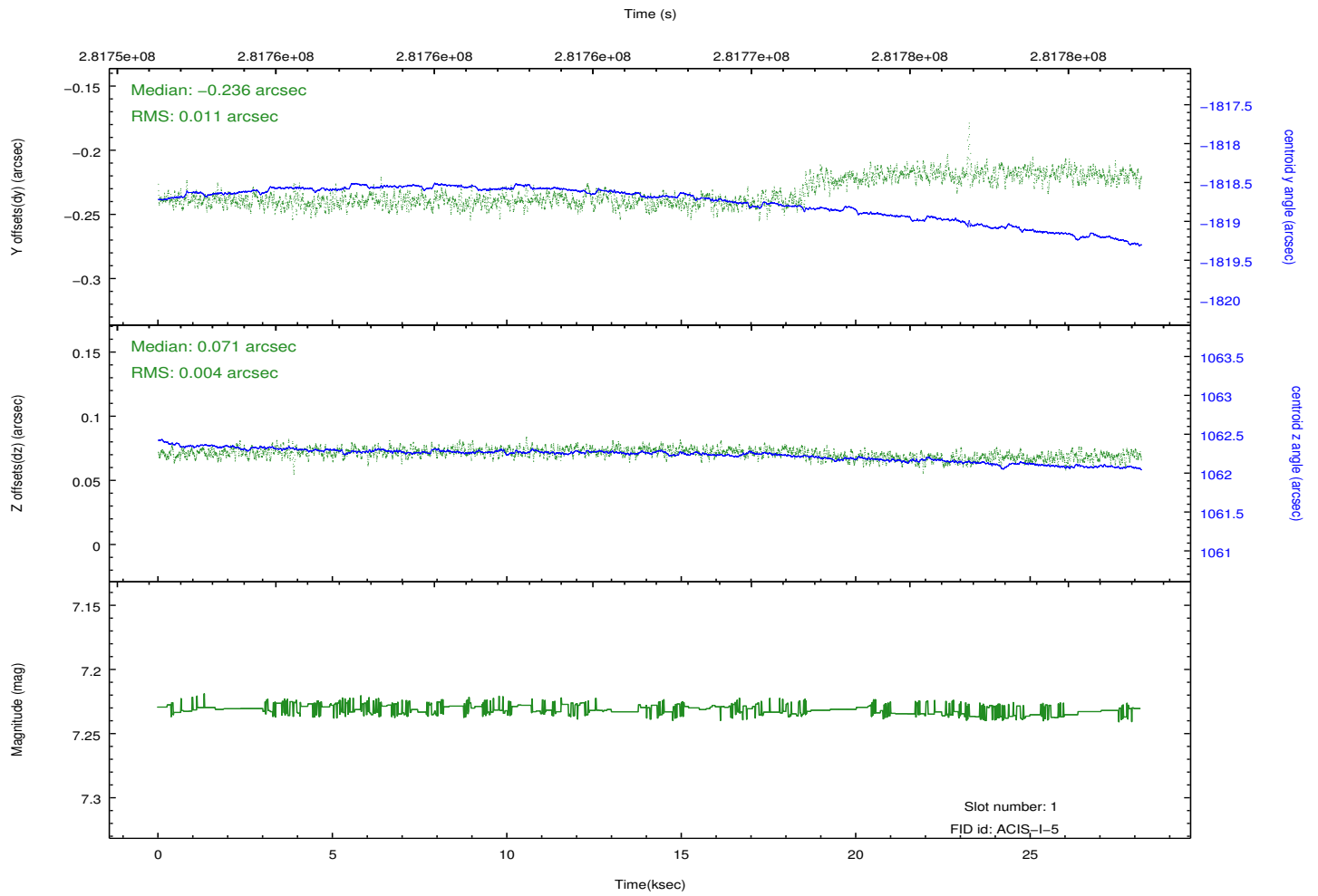
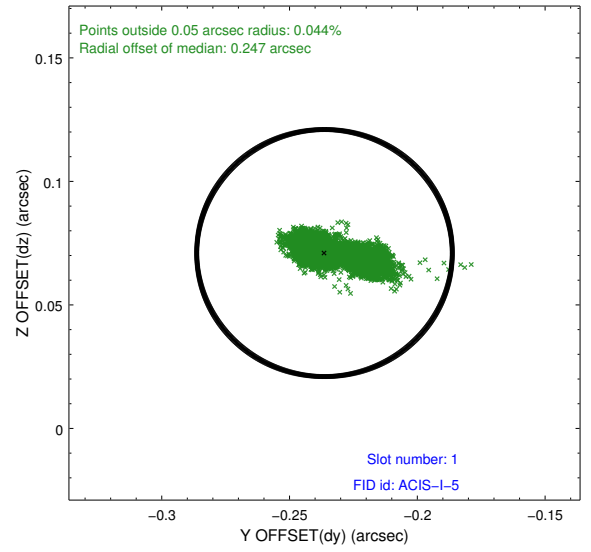
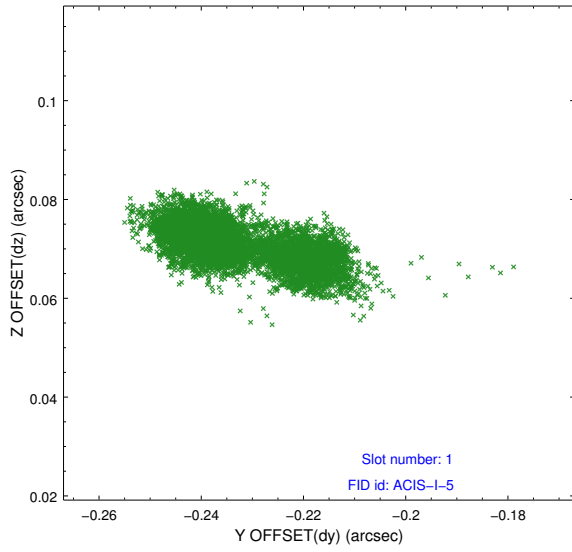


2.5 FID Slots

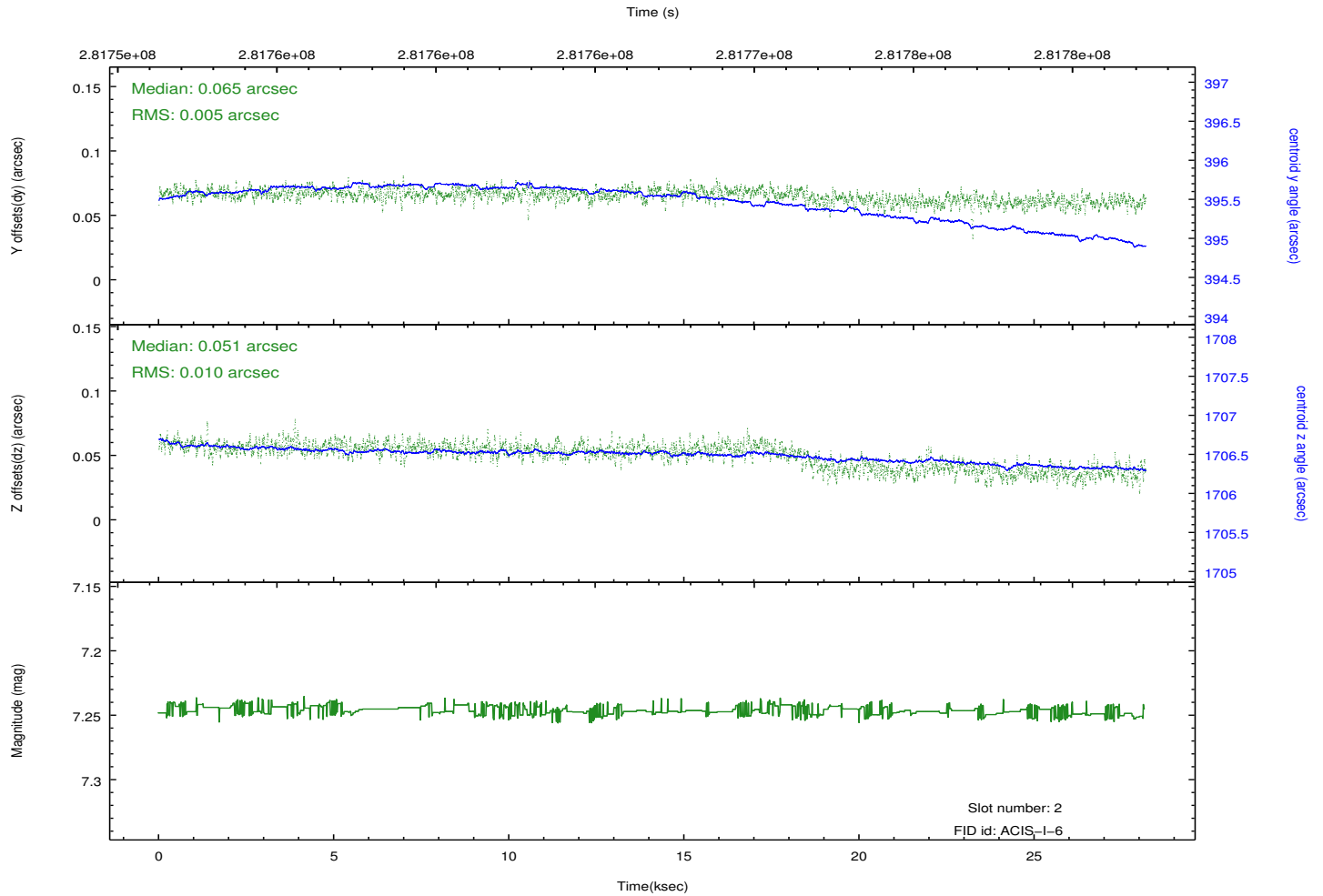
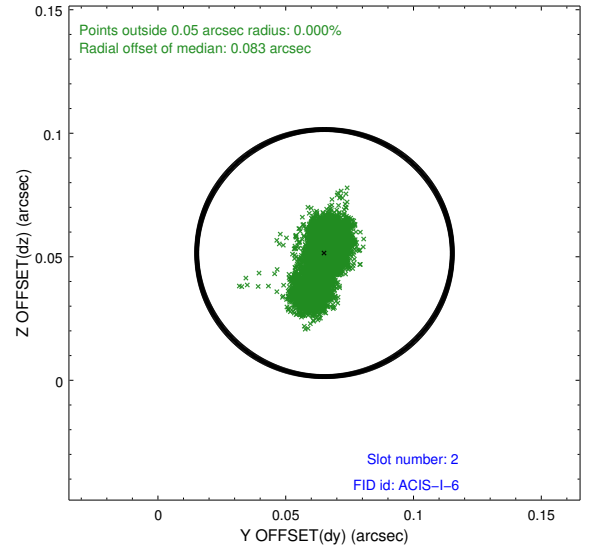
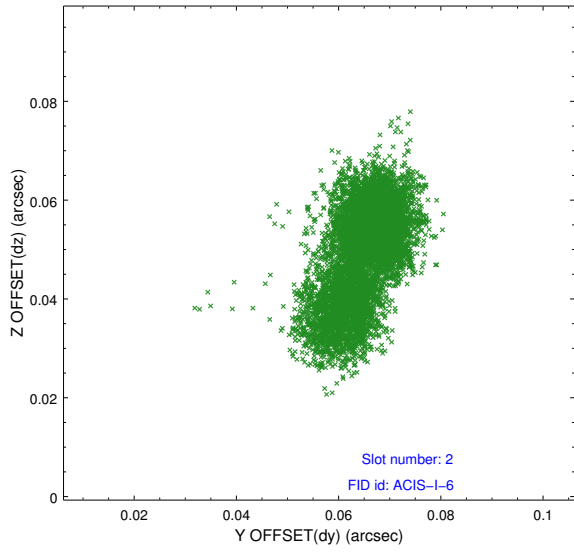
2.5.1 Slot 0



2.5.2 Slot 1



2.5.3 Slot 2



A Summary

A.1 Status

V&V Scientist	Jen Lauer
V&V Date (YYYY-MM-DD)	2012.04.18
V&V Edition	1
V&V Disposition and Status	OK
V&V Charge Time	28.1696592

A.2 Comments