

V&V Reference Report

L2 ASCDS Version : 8.4.5

Observation 738 - L2 Version 6
Chandra X-Ray Center

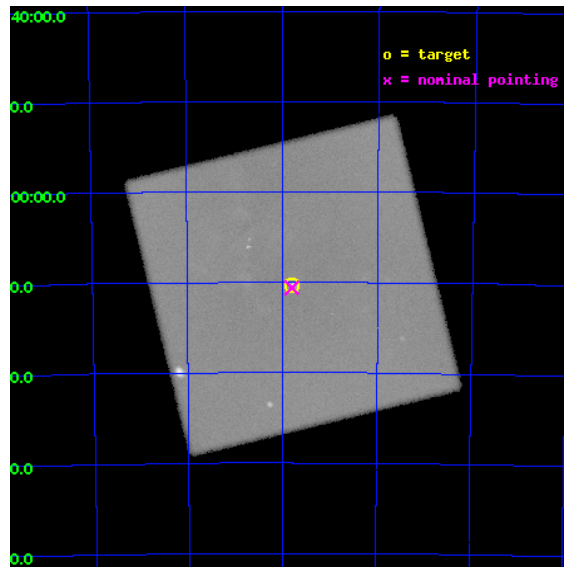
L2 Processing Date : Aug 22 2012

Contents

1	Front	2
2	OBI	3
2.1	OBI	3
2.1.1	Images	3
2.1.2	Parameters	4
2.1.3	Events	4
2.2	Compared Parameters	5
2.3	Aspect	6
2.4	Star Slots	9
2.4.1	Slot 3	9
2.4.2	Slot 4	10
2.4.3	Slot 5	11
2.4.4	Slot 6	12
2.4.5	Slot 7	13
2.5	FID Slots	14
2.5.1	Slot 0	14
2.5.2	Slot 1	15
2.5.3	Slot 2	16
A	Summary	17
A.1	Status	17
A.2	Comments	17

1 Front

seq_num	500034	Sequence number
obs_id	738	Observation id
title	SNR 0538-69.1: THE SNR WITH THE FASTEST KNOWN PULSAR	Proposal titl
observer	Prof. Q. Daniel Wang	Principal investigator
object	SNR 0538-69.1	Source name
ra_targ	84.448333	Observer's specified target RA [deg]
dec_targ	-69.172222	Observer's specified target Dec [deg]
ra_nom	84.450290056072	Nominal RA [deg]
dec_nom	-69.176786370117	Nominal Dec [deg]
roll_nom	301.34592829144	Nominal Roll [deg]
revision	6	Processing version of data
ontime	30484.782361411	[s]
livetime	28042.076172858	Ontime multiplied by DTCOR
l2events	1976294	Number of level 2 events

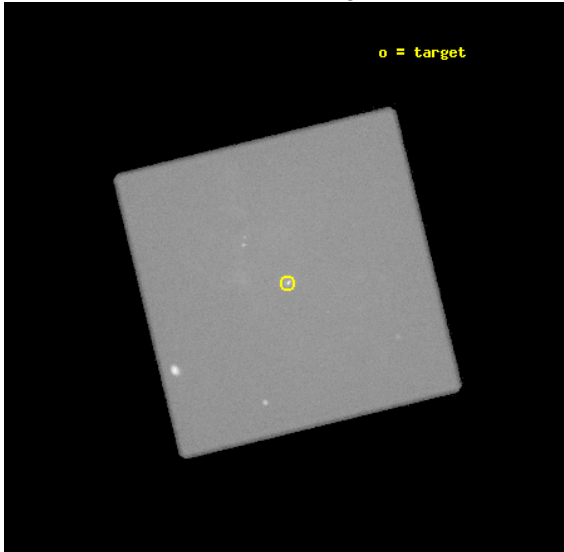


2 OBI

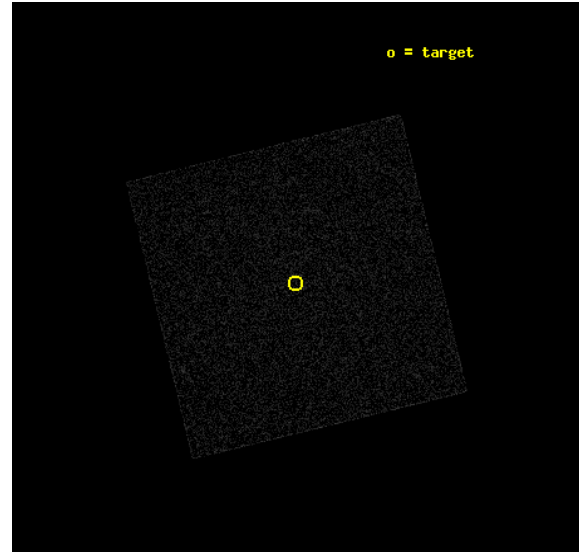
2.1 OBI

2.1.1 Images

Level 1 Image



Level 1 Bad Events



2.1.2 Parameters

obi_num	0	Obi number	sched_exp_time	30000.000000	[s] Scheduled observation exposure time
ascdsver	8.4.5	Processing system revision	ontime	30484.782361411	[s]
caldsver	4.5.1.1	 	l1events	2983076	Number of level 1 events
date	2012-08-22T13:56:08	Date and time of file creation			
revision	6	Processing version of data			

2.1.3 Events

Level 1 Events

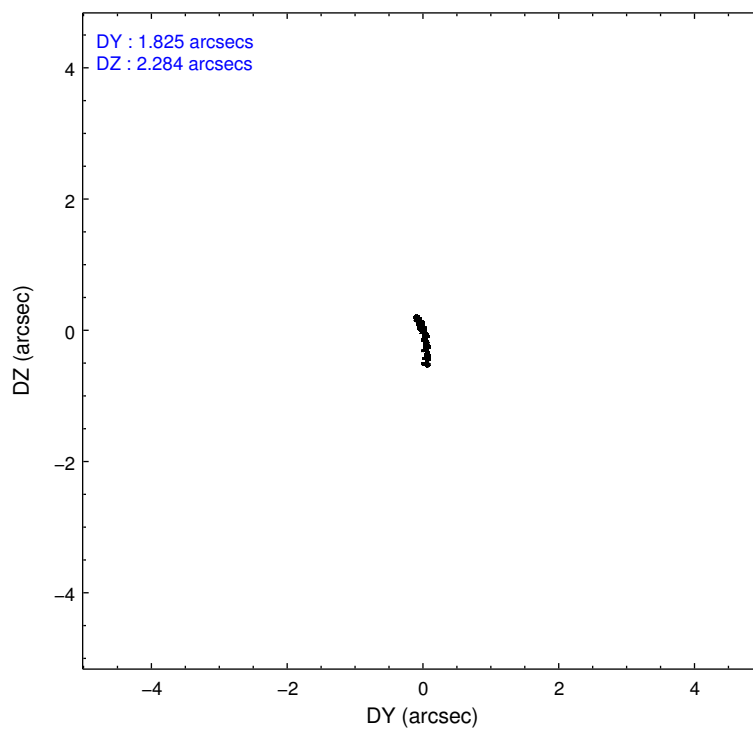
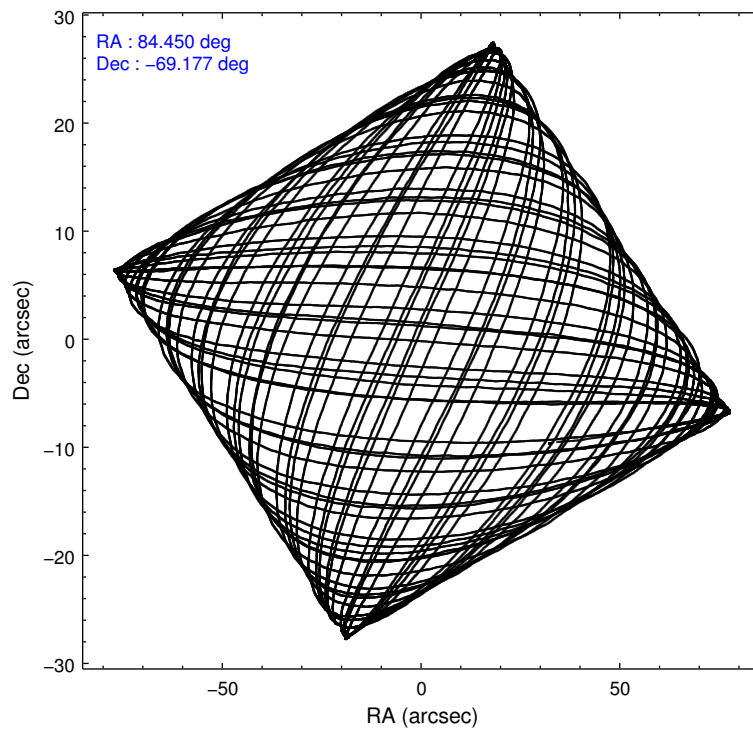
	segment 0
level 1 events	2983076
rejected events	183794
rejected %	6%

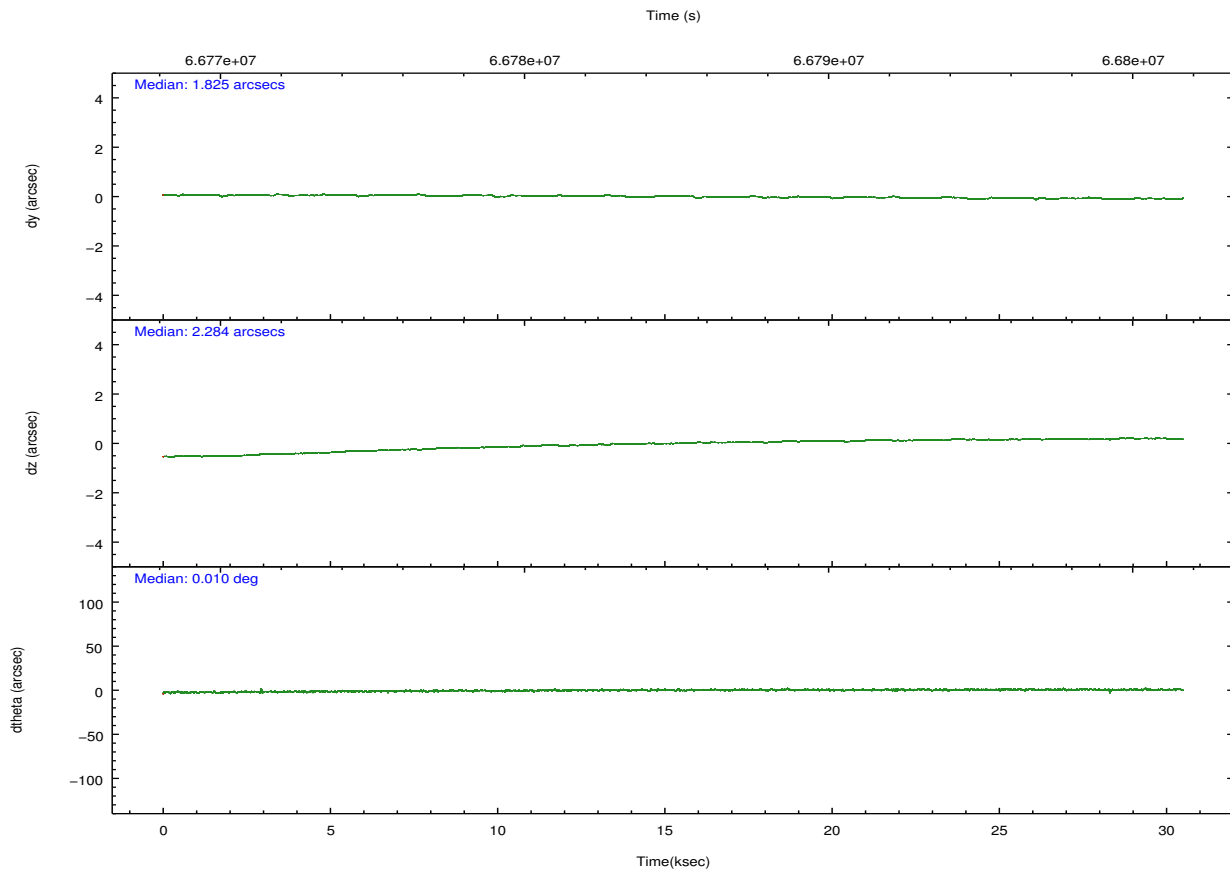
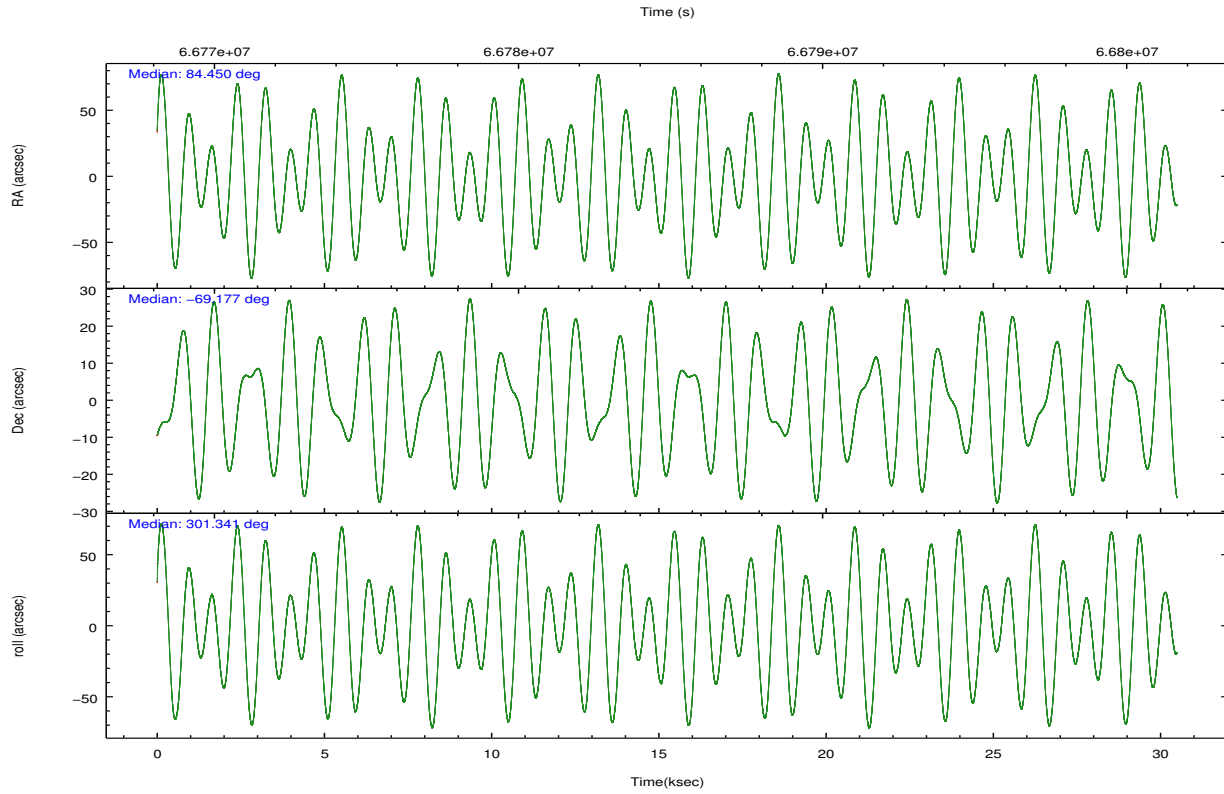
2.2 Compared Parameters

Parameter	Planned	Actual
Instrument	HRC	HRC
Detector	HRC-I	HRC-I
Grating	NONE	NONE
Data mode	OBSERVING	OBSERVING
Observation mode	POINTING	POINTING
[deg] Pointing RA	84.382392	84.45029005607182
[deg] Pointing Dec	-69.163900	-69.17678637011721
[deg] Pointing Roll	301.377959	301.3459282914394
[mm] SIM focus pos	-1.040293	-1.038866356238299
[mm] SIM defocus	0	0.001426264420575141
[mm] SIM translation stage pos	126.985494	126.9854943052878
[mm] SIM translation stage offset	0	-5.413686238853188e-06
[s] Observation start time (MET)	66770129.184000	66768830.182273
Observation start date	2000-02-12T19:14:25	2000-02-12T18:53:50
[s] Observation end time (MET)	66800129.184000	66801324.733458
Observation end date	2000-02-13T03:34:25	2000-02-13T03:55:24

Parameter	Planned	Actual
Obspar format version number	7	7
Obspar file type	PREDICTED	ACTUAL
Obspar update status	NONE	UPDATED

2.3 Aspect



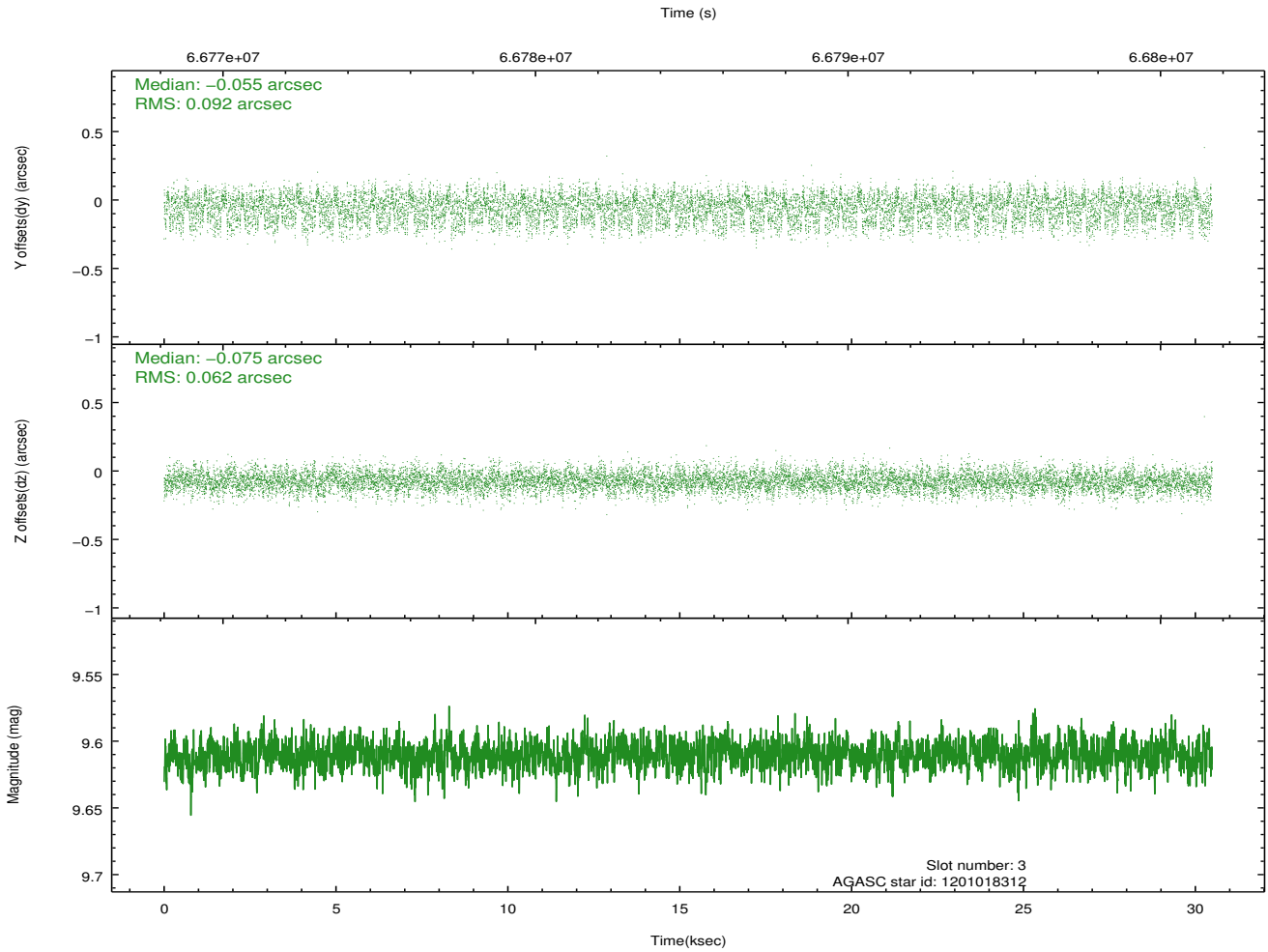
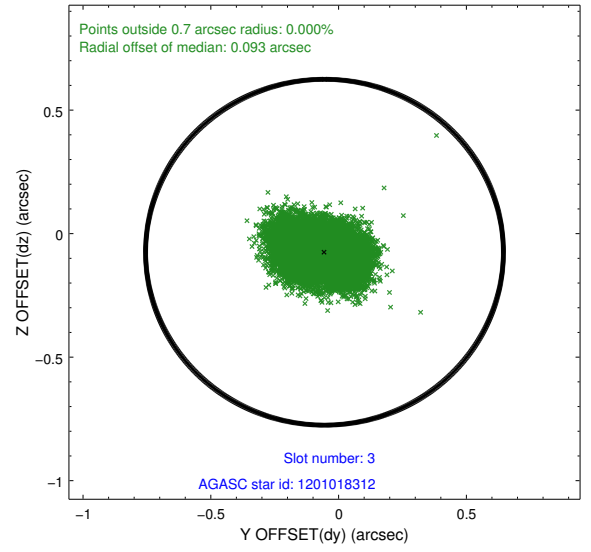
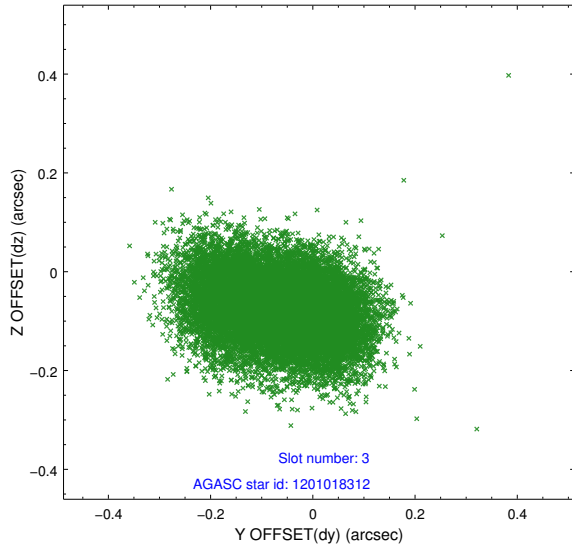


Slot Statistics

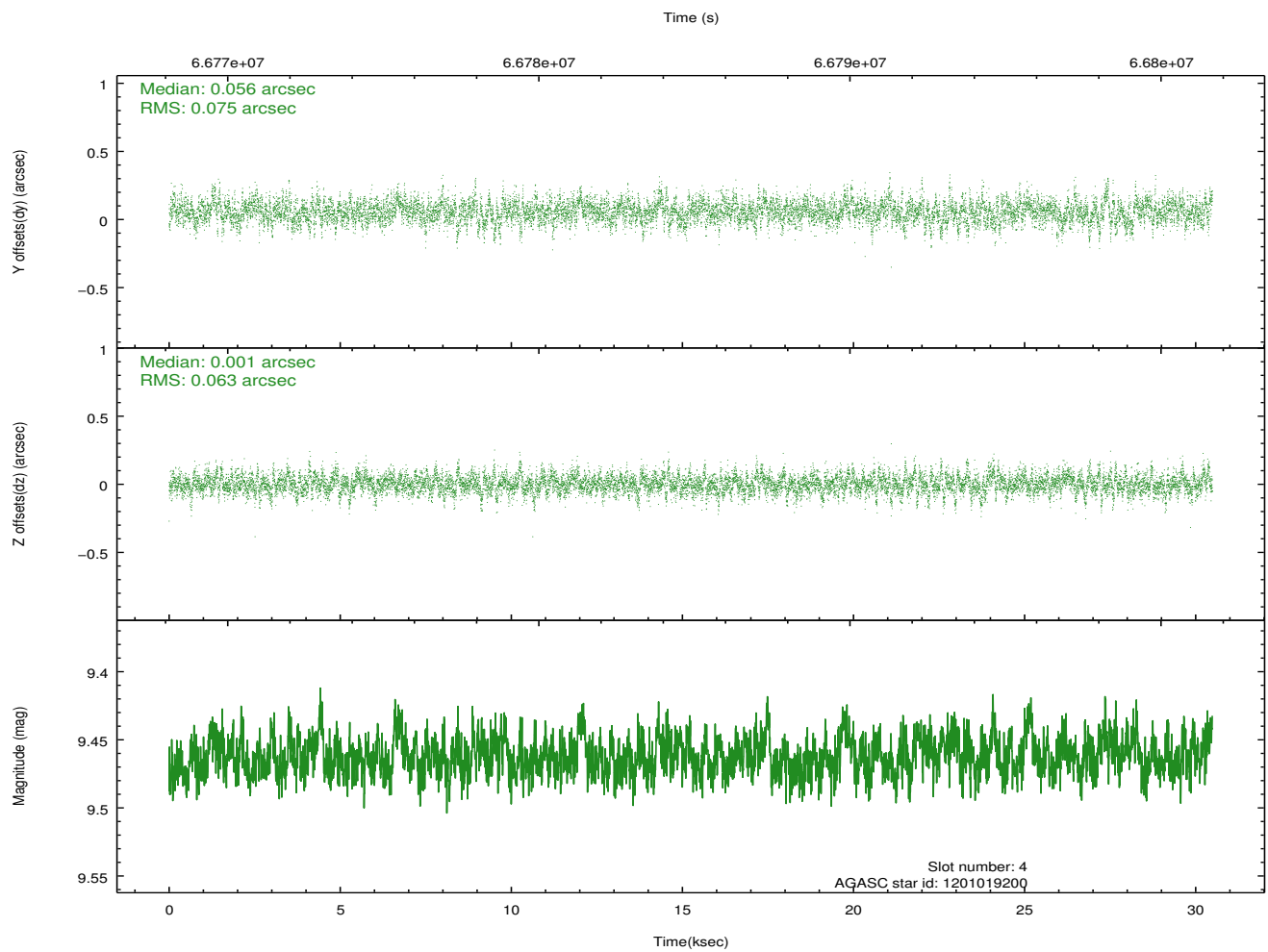
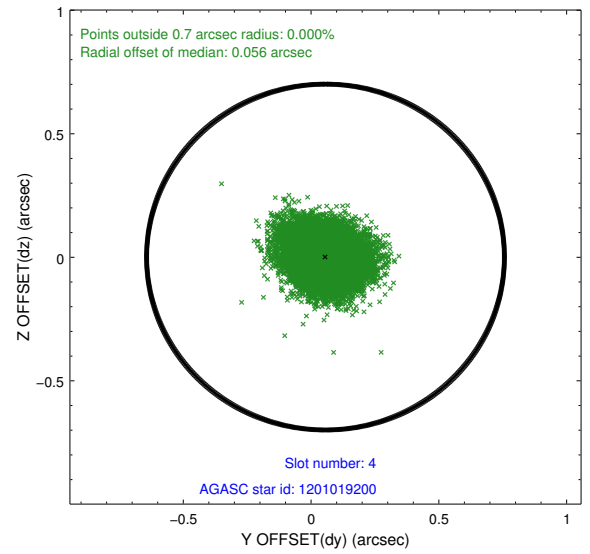
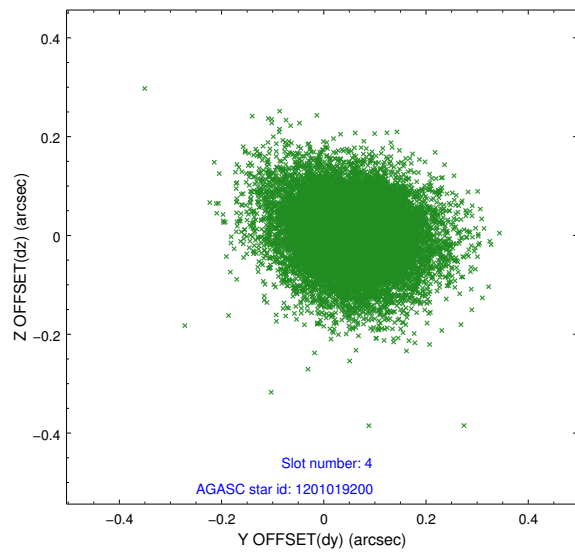
slot	status	id	mag	n_pts	med_dy	med_dz	dr1	dr2	ra	dec	mean_y	mean_z
0	FID	HRC-I-1	6.95	7436	0.038	-0.019	0.013	0.026	0.000000	0.000000	-757.25	-1289.98
1	FID	HRC-I-2	7.00	7435	0.052	-0.029	0.011	0.022	0.000000	0.000000	855.29	-1291.76
2	FID	HRC-I-4	6.98	7436	0.025	-0.043	0.010	0.019	0.000000	0.000000	1285.68	1011.95
3	GUIDE	1201018312	9.61	14859	-0.055	-0.075	0.120	0.190	86.298231	-69.115627	1164.61	2168.64
4	GUIDE	1201019200	9.46	14866	0.056	0.001	0.102	0.175	84.213591	-68.777384	-1301.73	535.92
5	GUIDE	1200883536	9.89	14864	0.037	0.038	0.102	0.169	83.119228	-69.218429	-657.74	-1488.90
6	GUIDE	1200886544	9.56	14867	-0.005	0.055	0.096	0.163	82.995430	-69.160893	-916.37	-1521.97
7	GUIDE	1201017424	10.20	14851	-0.025	-0.021	0.135	0.225	85.854985	-69.248506	1257.46	1432.50

2.4 Star Slots

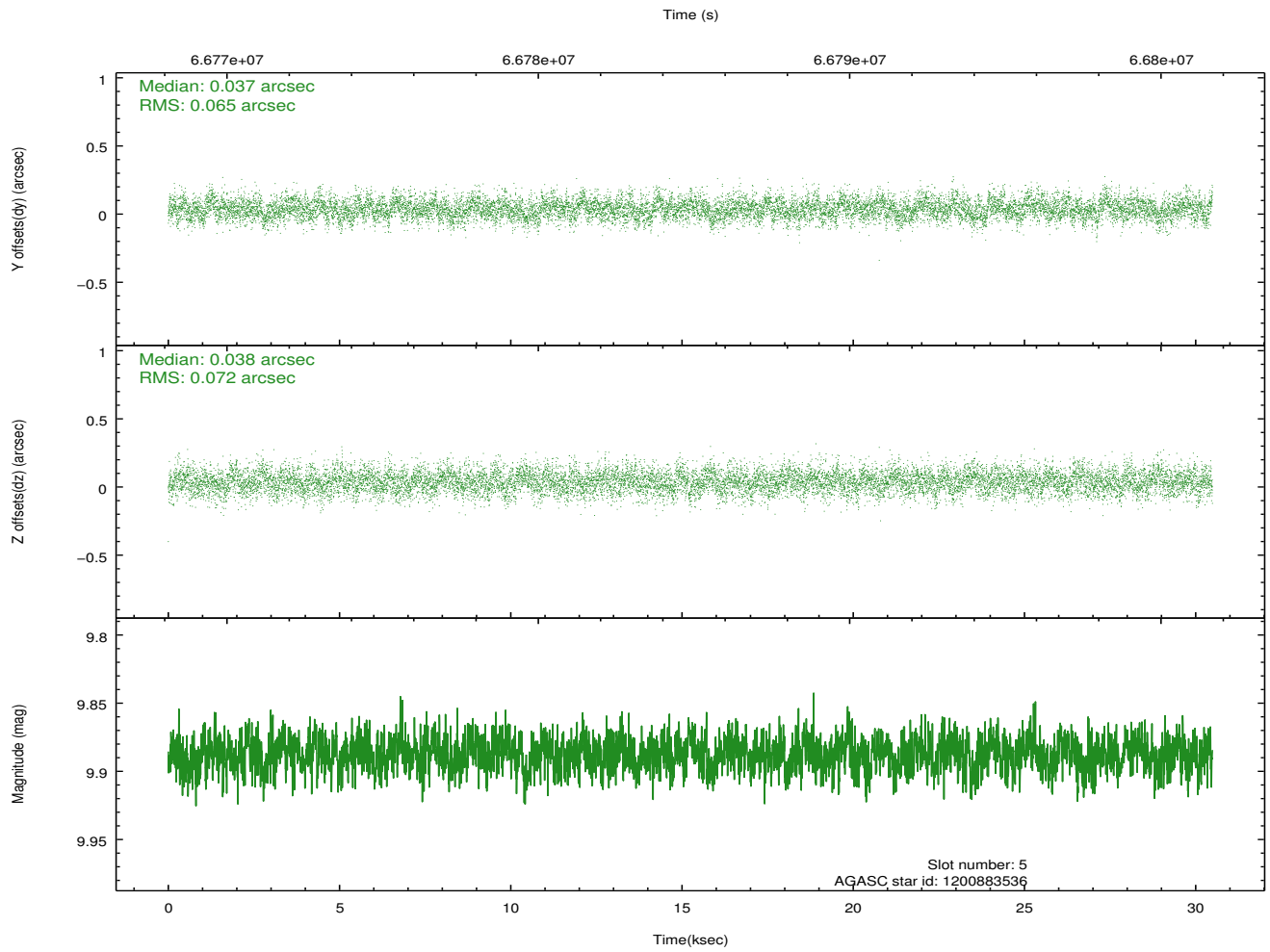
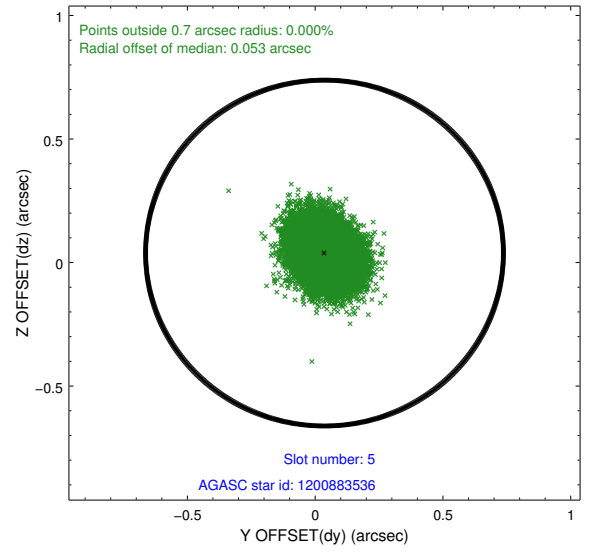
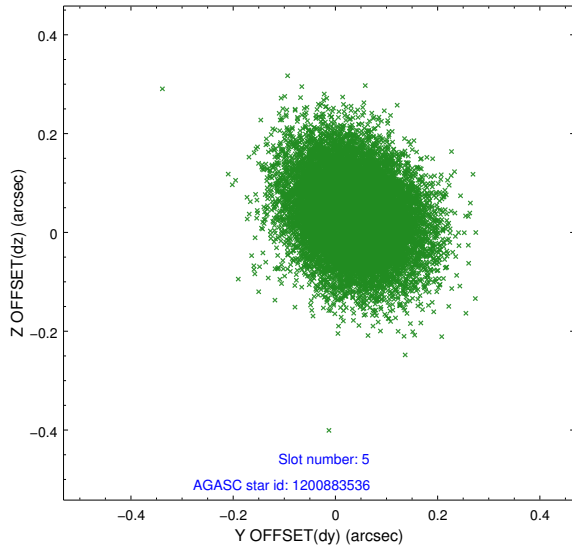
2.4.1 Slot 3



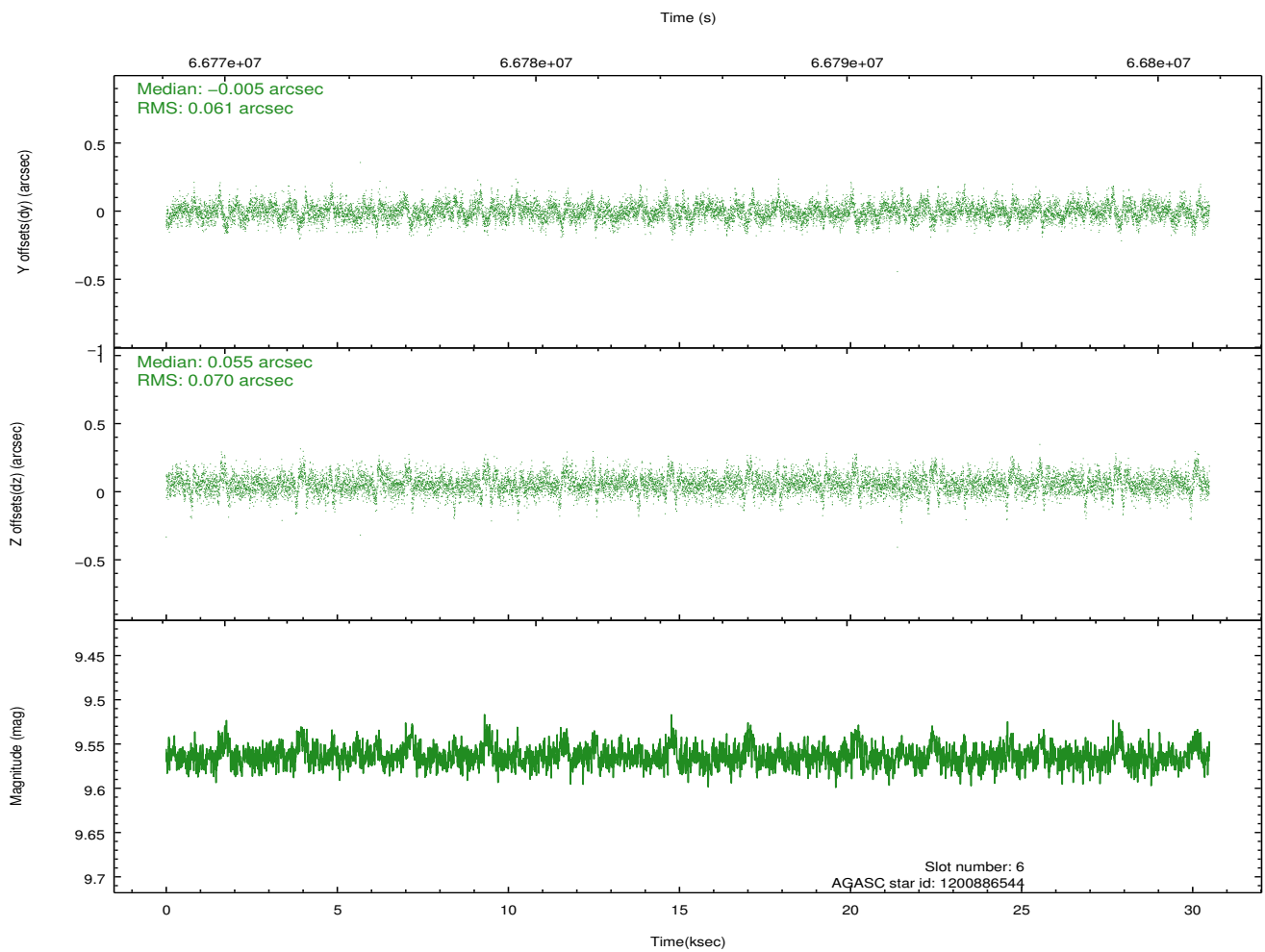
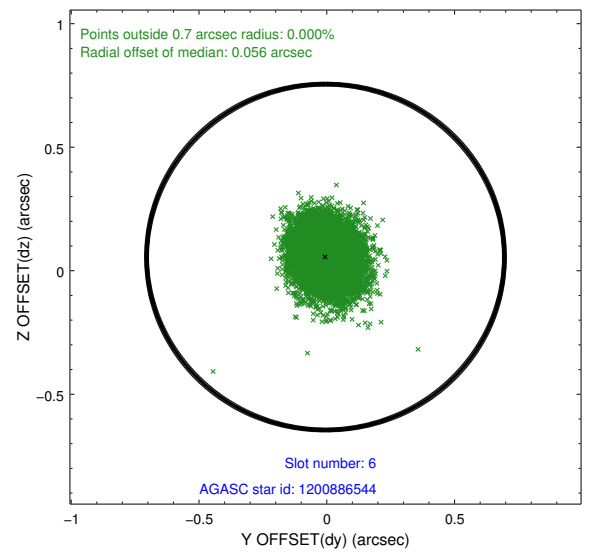
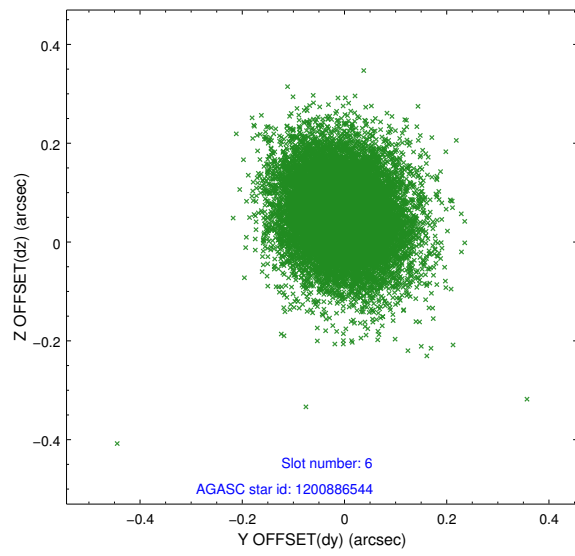
2.4.2 Slot 4



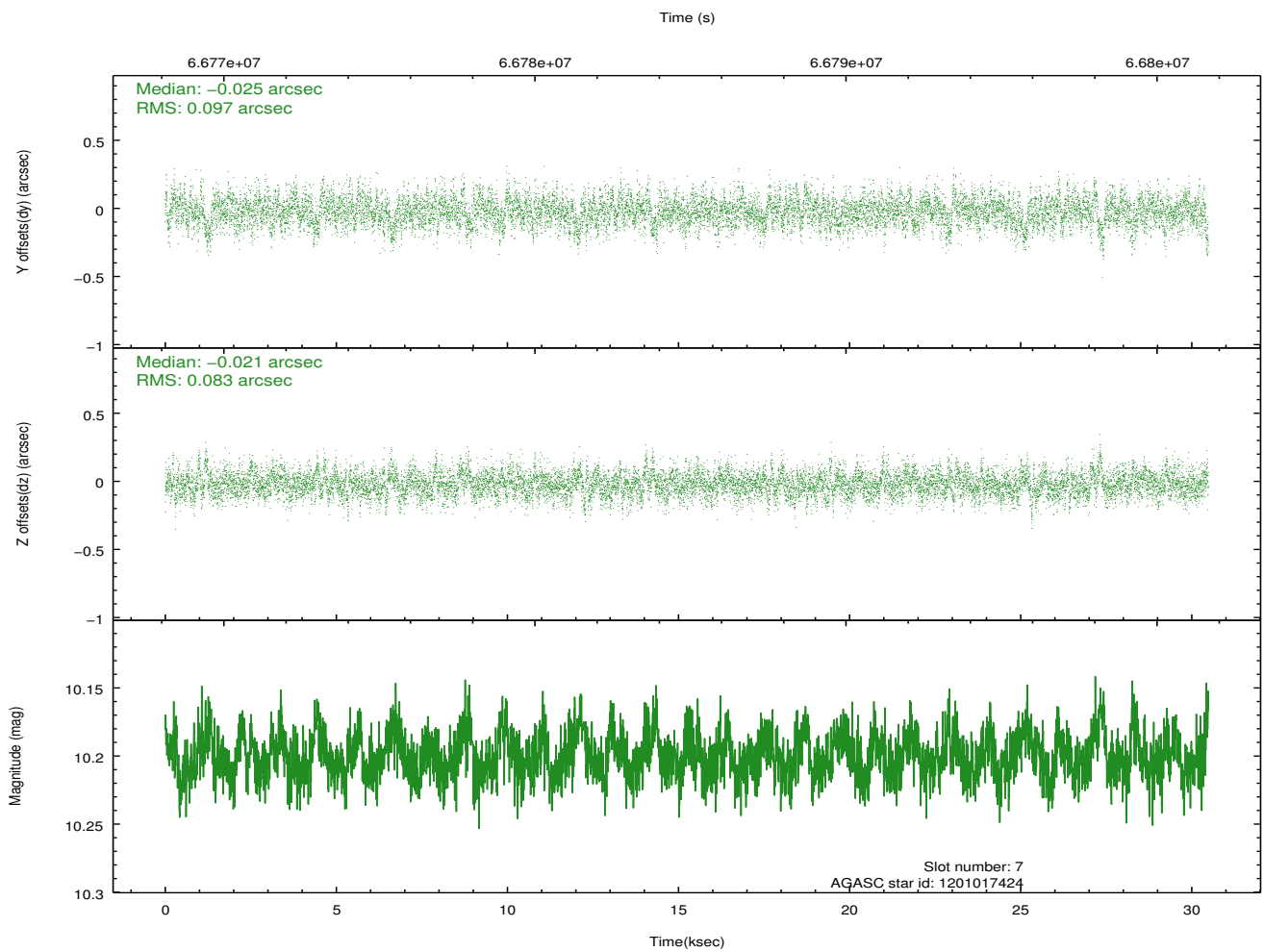
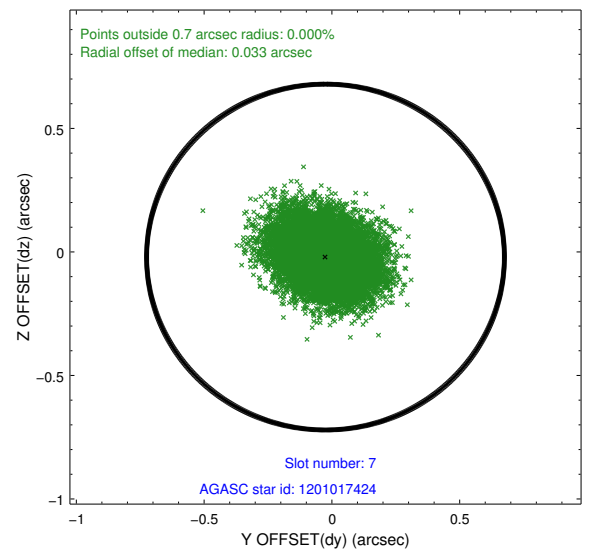
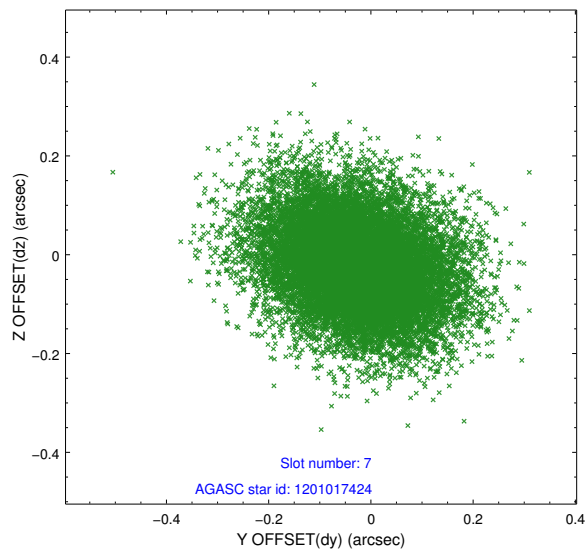
2.4.3 Slot 5



2.4.4 Slot 6

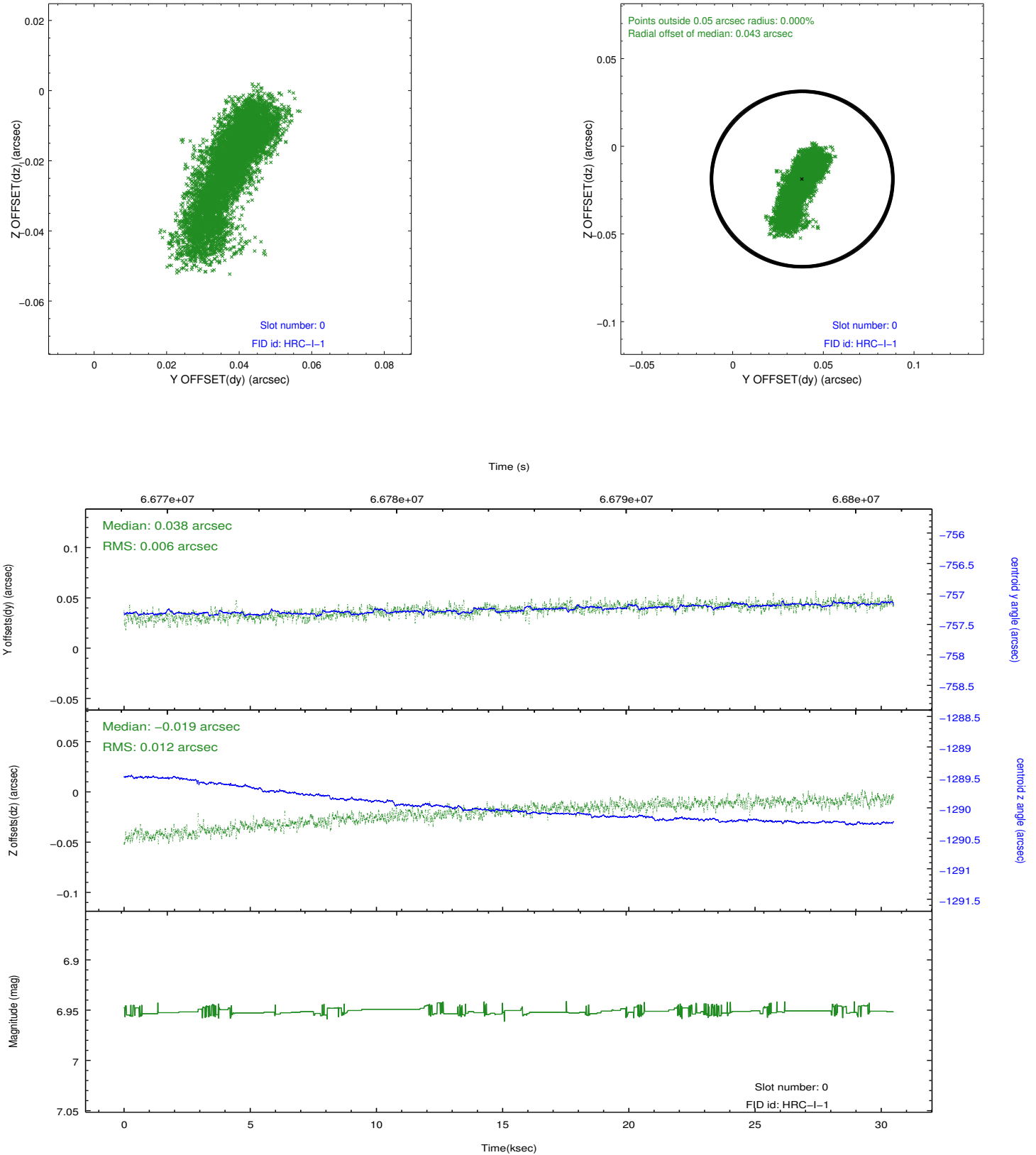


2.4.5 Slot 7

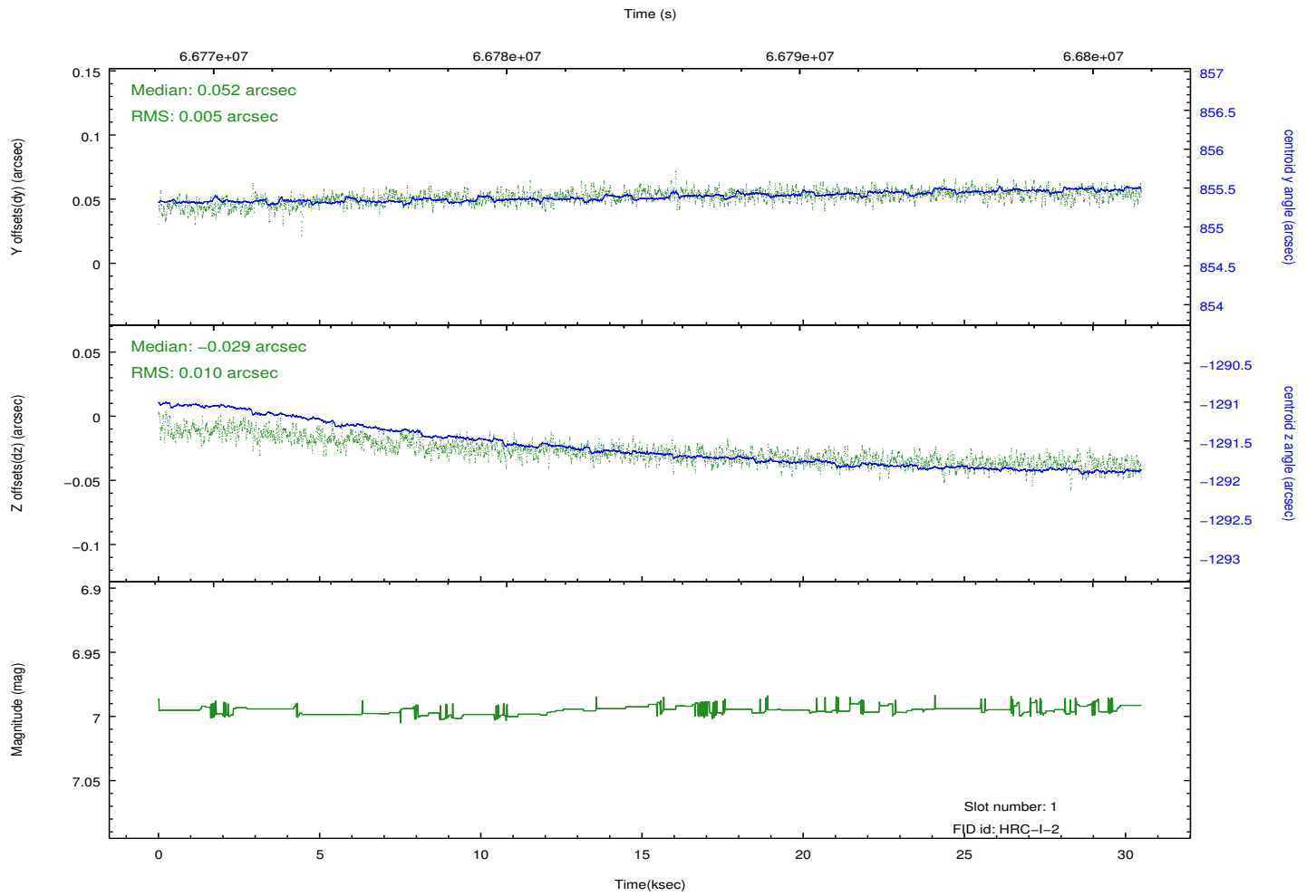
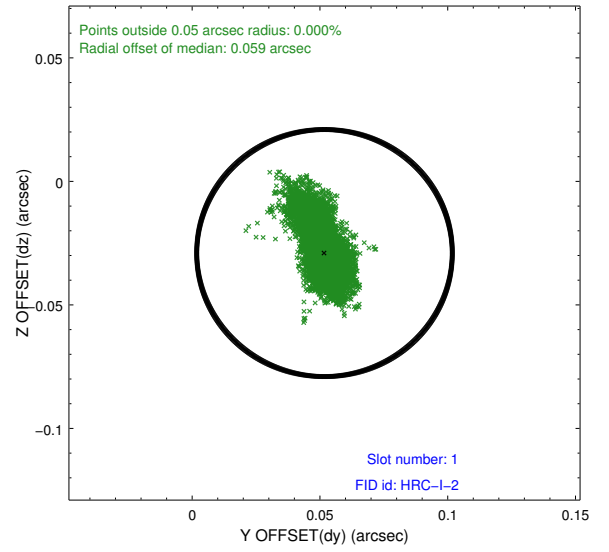
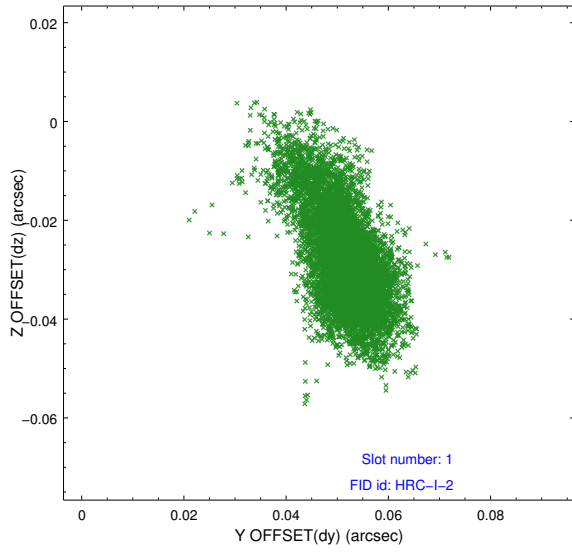


2.5 FID Slots

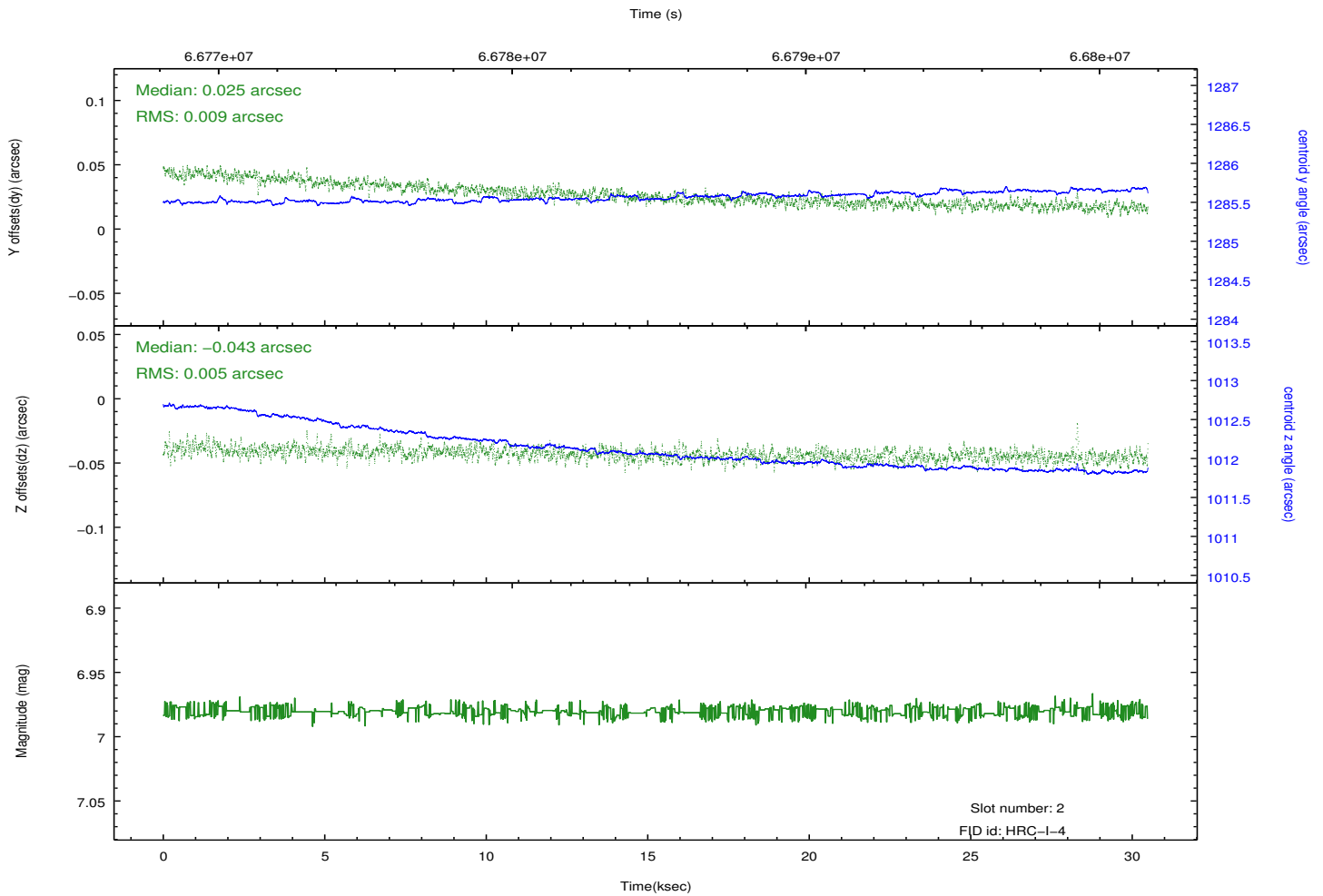
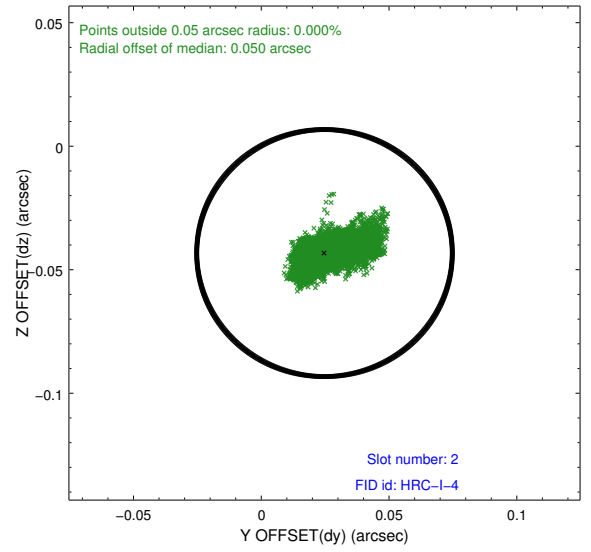
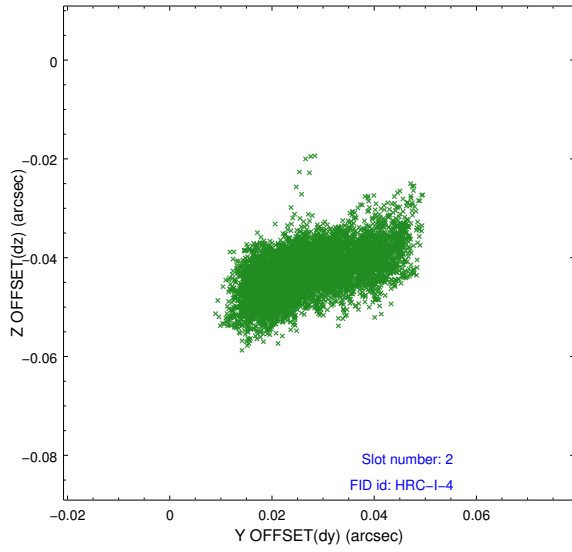
2.5.1 Slot 0



2.5.2 Slot 1



2.5.3 Slot 2



A Summary

A.1 Status

V&V Scientist	Jen Lauer
V&V Date (YYYY-MM-DD)	2012.08.23
V&V Edition	1
V&V Disposition and Status	OK
V&V Charge Time	30.438

A.2 Comments

Charge time for this ObsId remains at previous value of 30.438 ks although with the current processing the charge time would have been 30.48 ksec.