

V&V Reference Report

L2 ASCDS Version : 8.4.3.1

Observation 7418 - L2 Version 3
Chandra X-Ray Center

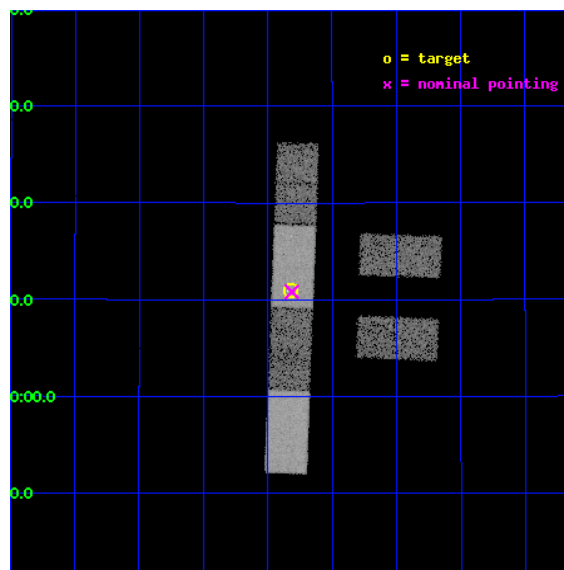
L2 Processing Date : Apr 16 2012

Contents

1	Front	2
2	OBI	3
2.1	OBI	3
2.1.1	Images	3
2.1.2	Bias	3
2.1.3	Parameters	4
2.1.4	Events	4
2.2	Compared Parameters	5
2.3	Aspect	6
2.4	Star Slots	9
2.4.1	Slot 3	9
2.4.2	Slot 4	10
2.4.3	Slot 5	11
2.4.4	Slot 6	12
2.4.5	Slot 7	13
2.5	FID Slots	14
2.5.1	Slot 0	14
2.5.2	Slot 1	15
2.5.3	Slot 2	16
A	Summary	17
A.1	Status	17
A.2	Comments	17

1 Front

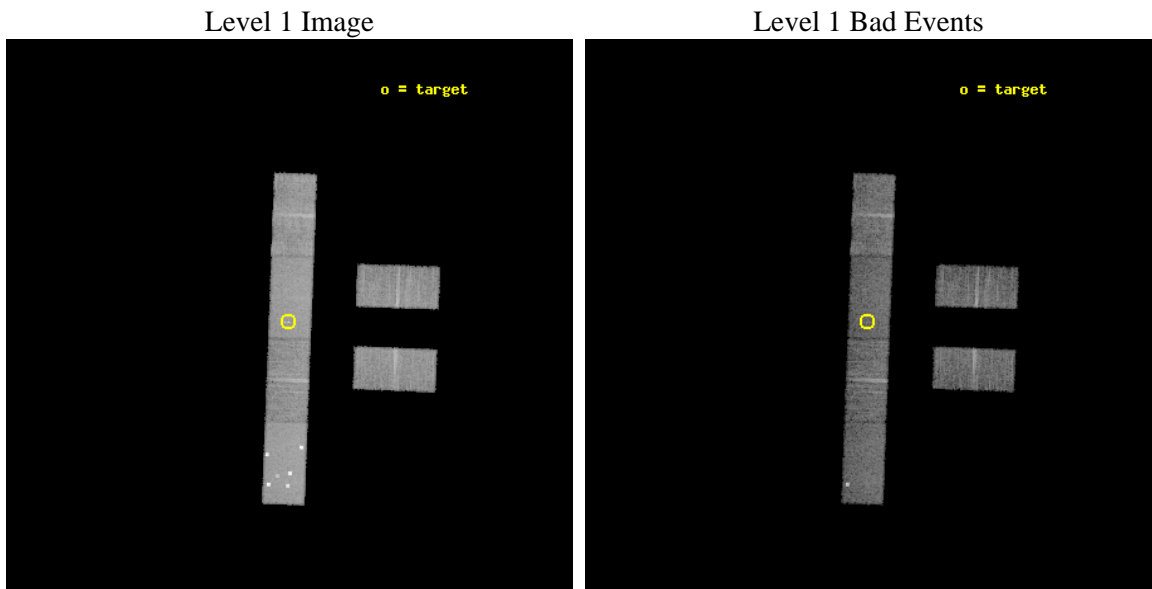
seq_num	200431	Sequence number
obs_id	7418	Observation id
title	Evolution of Magnetic Activity and the Accretion History in Taurus-Auriga Multiple Systems	Proposal title
observer	Prof. Manuel Guedel	Principal investigator
object	HBC 358/59	Source name
dtcycle	0	
cycle	P	events from which exps? Prim/Second/Both
ra_targ	60.955	Observer's specified target RA [deg]
dec_targ	26.181667	Observer's specified target Dec [deg]
ra_nom	60.953295442103	Nominal RA [deg]
dec_nom	26.180256393117	Nominal Dec [deg]
roll_nom	272.15589009501	Nominal Roll [deg]
revision	3	Processing version of data
ontime	10180.800067365	Sum of GTIs [s]
livetime	9953.8522363758	Livetime [s]
ontime2	10180.800067365	Sum of GTIs [s]
ontime3	10180.800067365	Sum of GTIs [s]
ontime5	10180.800067365	Sum of GTIs [s]
ontime6	10180.800067365	Sum of GTIs [s]
ontime7	10180.800067365	Sum of GTIs [s]
ontime8	10180.800067365	Sum of GTIs [s]
l2events	77119	Number of level 2 events



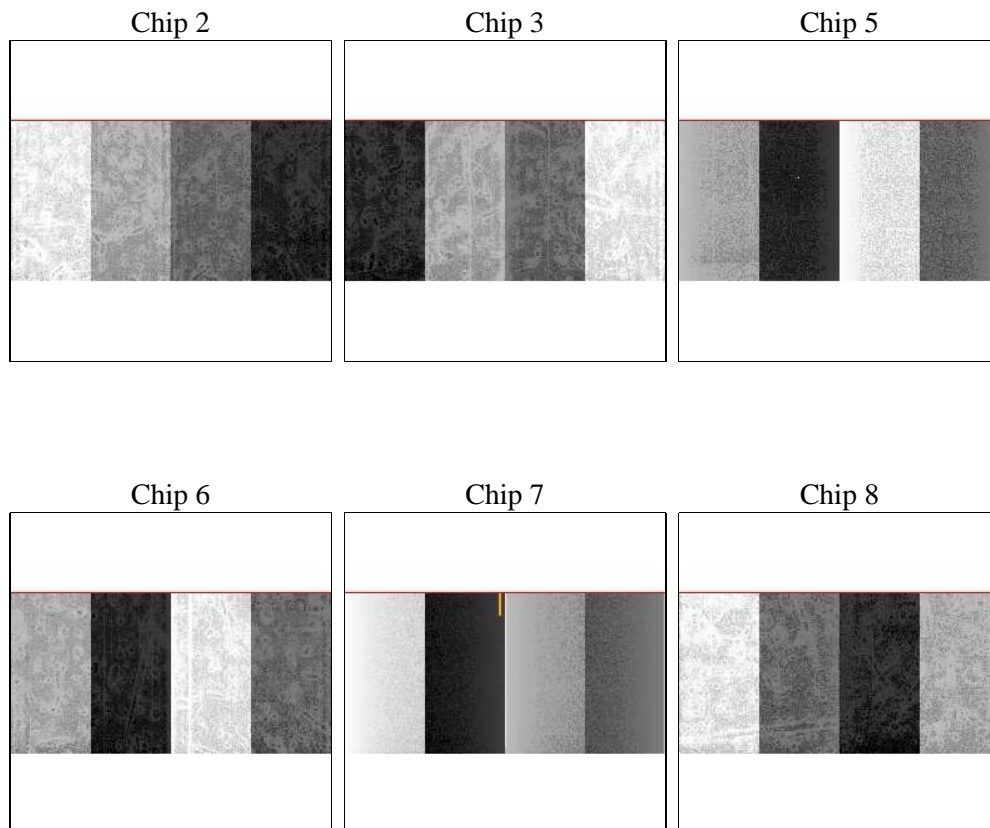
2 OBI

2.1 OBI

2.1.1 Images



2.1.2 Bias



2.1.3 Parameters

obi_num	0	Obi number	sched_exp_time	10000.000000	[s] Scheduled observation exposure time
ascdsver	8.4.3.1	Processing system revision	ontime	10180.800067365	Sum of GTIs [s]
caldbver	4.4.9	 	ontime2	10180.800067365	Sum of GTIs [s]
date	2012-04-16T04:16:50	Date and time of file creation	ontime3	10180.800067365	Sum of GTIs [s]
revision	3	Processing version of data	ontime5	10180.800067365	Sum of GTIs [s]
			ontime6	10180.800067365	Sum of GTIs [s]
			ontime7	10180.800067365	Sum of GTIs [s]
			ontime8	10180.800067365	Sum of GTIs [s]
			l1events	416635	Number of level 1 events

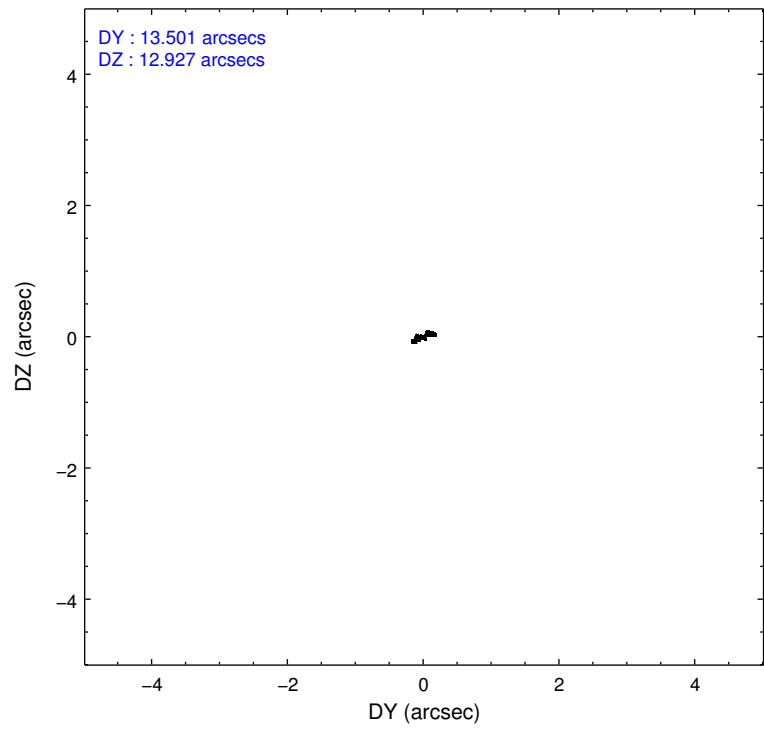
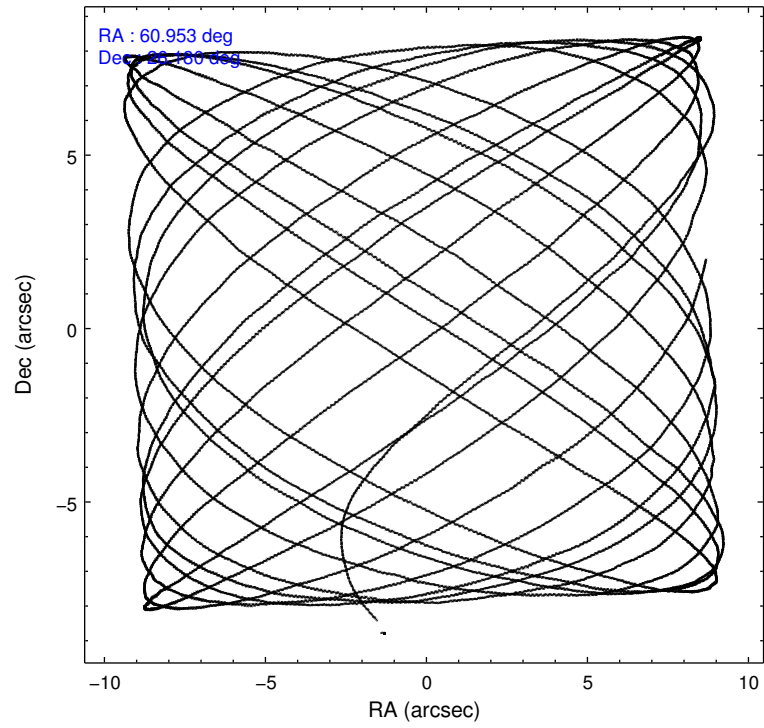
2.1.4 Events

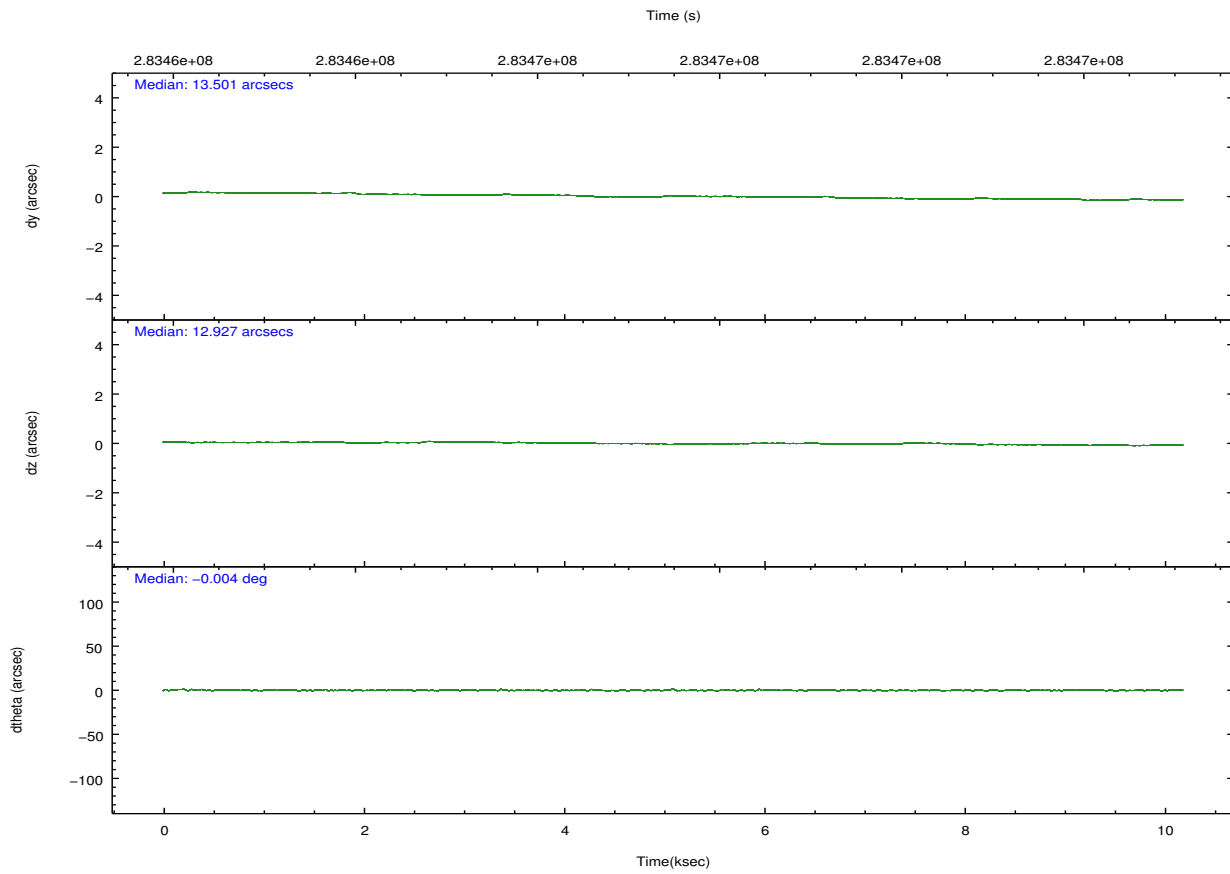
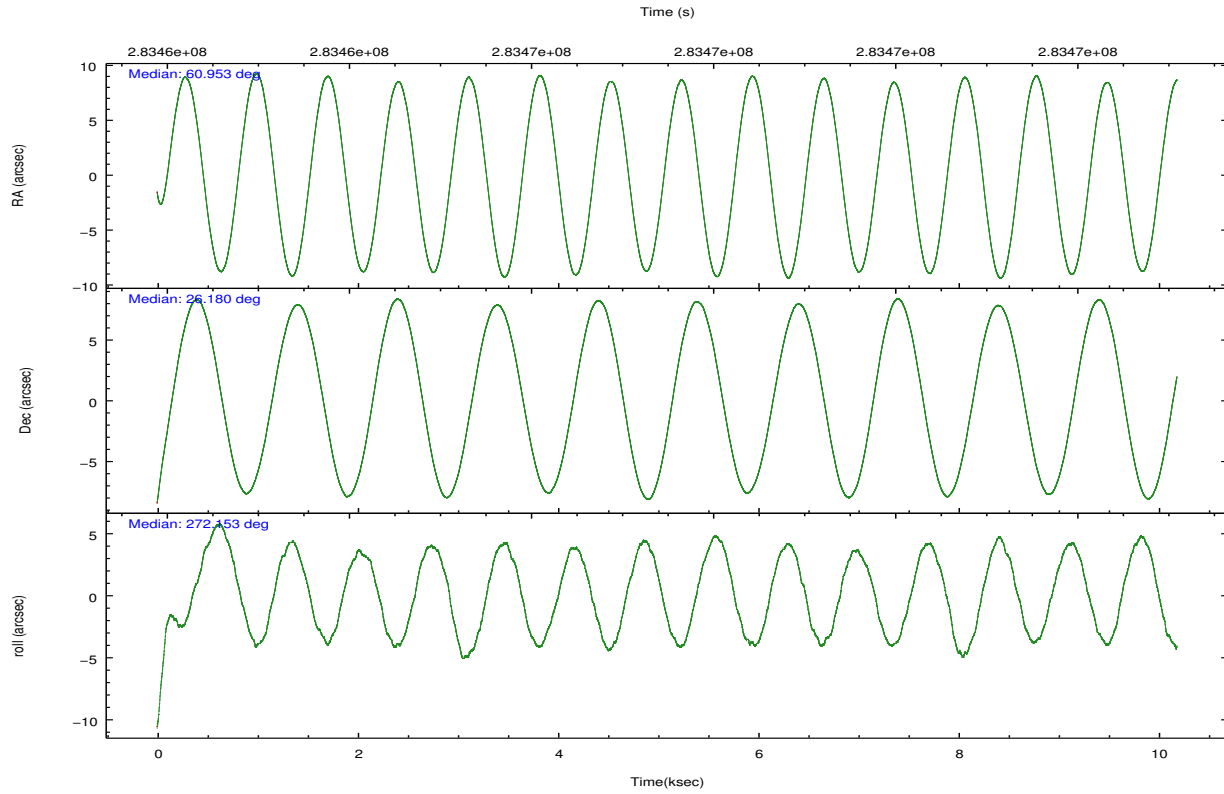
	ccd 2	ccd 3	ccd 5	ccd 6	ccd 7	ccd 8		ccd 2	ccd 3	ccd 5	ccd 6	ccd 7	ccd 8
level 1 events	57386	54813	104851	55152	74092	70341	grade 0 events	2575	2718	20699	2457	3202	4595
rejected events	51854	49167	52475	49445	46336	57931		4%	4%	19%	4%	4%	6%
rejected %	90%	89%	50%	89%	62%	82%	grade 1 events	21	29	126	25	82	31
								0%	0%	0%	0%	0%	0%
							grade 2 events	1315	1238	16511	1346	6551	3265
								2%	2%	15%	2%	8%	4%
							grade 3 events	726	774	1997	737	3055	1529
								1%	1%	1%	1%	4%	2%
							grade 4 events	704	719	1464	711	2947	1505
								1%	1%	1%	1%	3%	2%
							grade 5 events	2205	2485	6286	2474	6918	3181
								3%	4%	5%	4%	9%	4%
							grade 6 events	1097	1099	19373	1317	16074	3847
								1%	2%	18%	2%	21%	5%
							grade 7 events	48743	45751	38395	46085	35263	52388
								84%	83%	36%	83%	47%	74%

2.2 Compared Parameters

Parameter	Planned	Actual	Parameter	Planned	Actual
Instrument	ACIS	ACIS	Obspar format version number	7	7
Detector	ACIS-235678	ACIS-235678	Obspar file type	PREDICTED	ACTUAL
Grating	NONE	NONE	Obspar update status	NONE	UPDATED
Data mode	FAINT	FAINT	Number of optional ACIS chips dropped	0	0
Observation mode	POINTING	POINTING	On-chip summing requested	N	N
[deg] Pointing RA	60.936686	60.95329544210303	Subarray requested	CUSTOM	1/2
[deg] Pointing Dec	26.203210	26.18025639311701	Subarray start row	257	257
[deg] Pointing Roll	272.006593	272.1558900950087	Subarray row count	512	512
[mm] SIM focus pos	-0.684267	-0.6828225247311905	Alternating exposures requested	N	N
[mm] SIM defocus	0	0.001444936568705701	[s] Primary exposure time	0.000000	1.8
[mm] SIM translation stage pos	-190.132523	-190.1425803651734			
[mm] SIM translation stage offset	0	0.01005778216563158			
[s] Observation start time (MET)	283462574.184000	283460884.77972			
Observation start date	2006-12-25T19:35:09	2006-12-25T19:08:04			
[s] Observation end time (MET)	283472574.184000	283473333.40531			
Observation end date	2006-12-25T22:21:49	2006-12-25T22:35:33			
Read mode	TIMED	TIMED			

2.3 Aspect



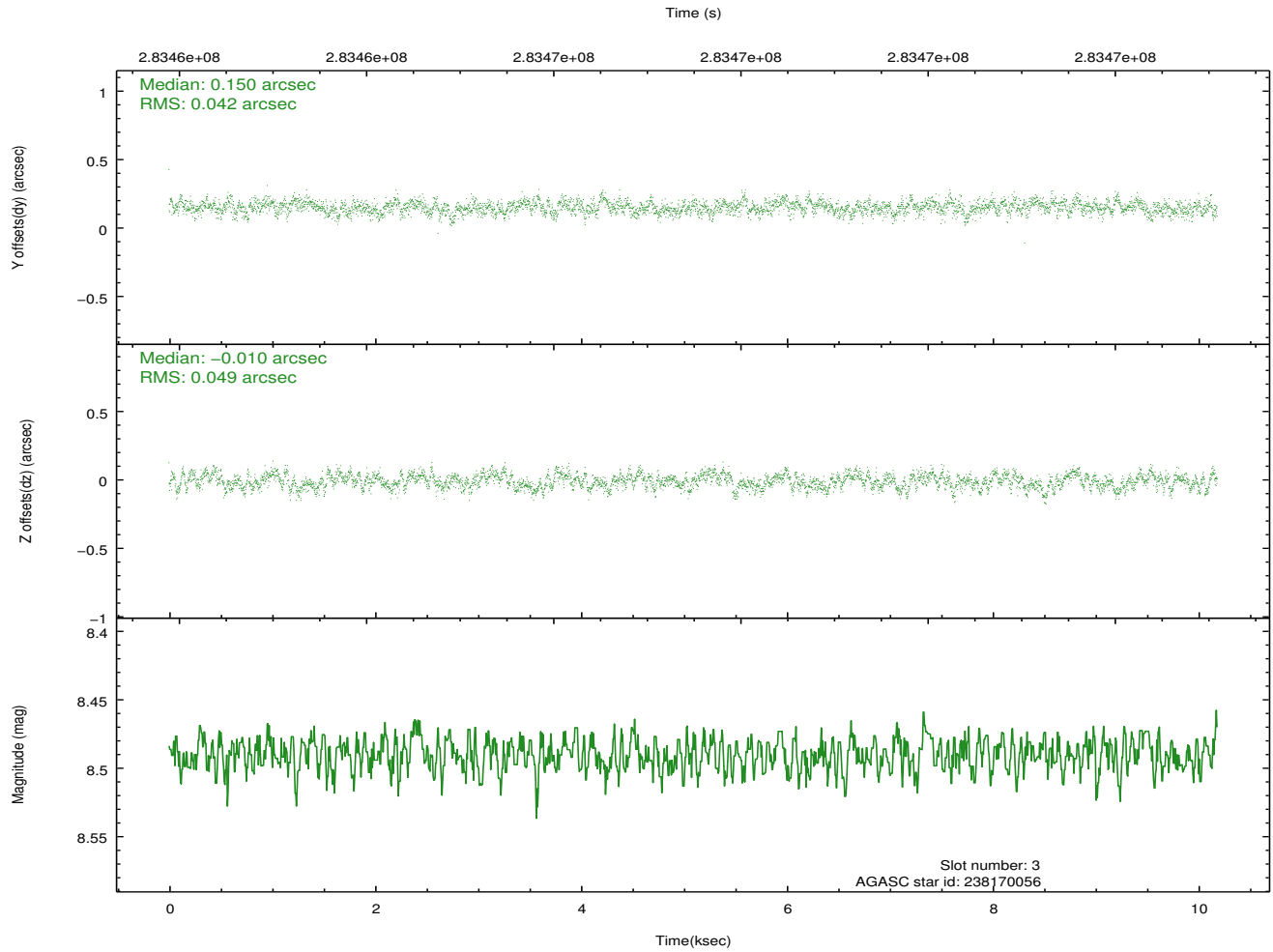
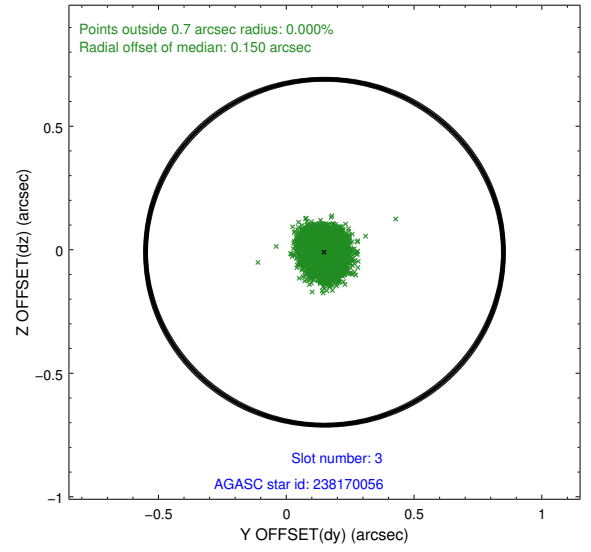
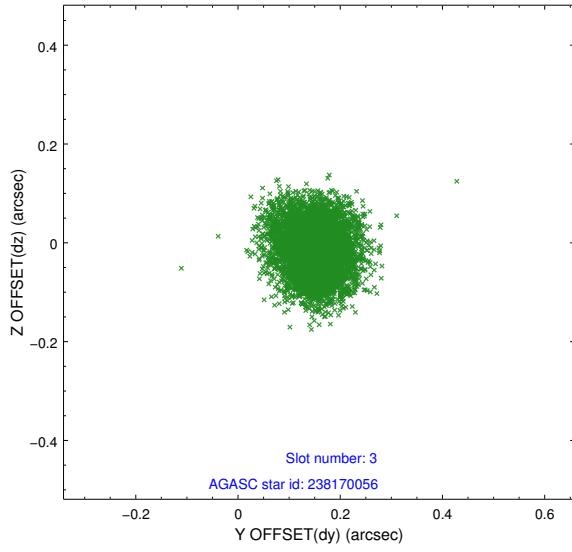


Slot Statistics

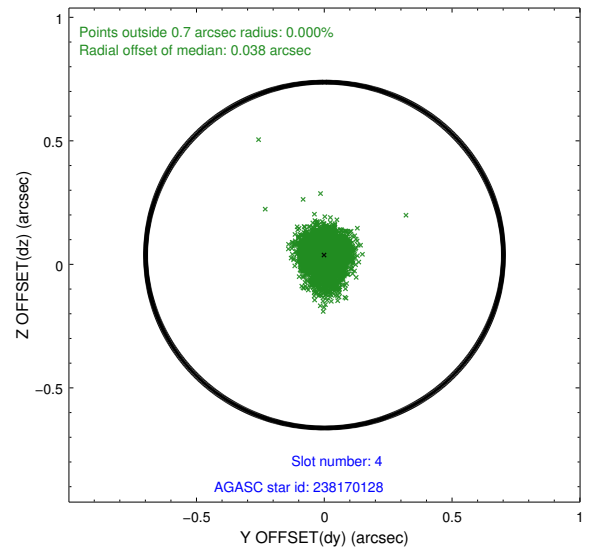
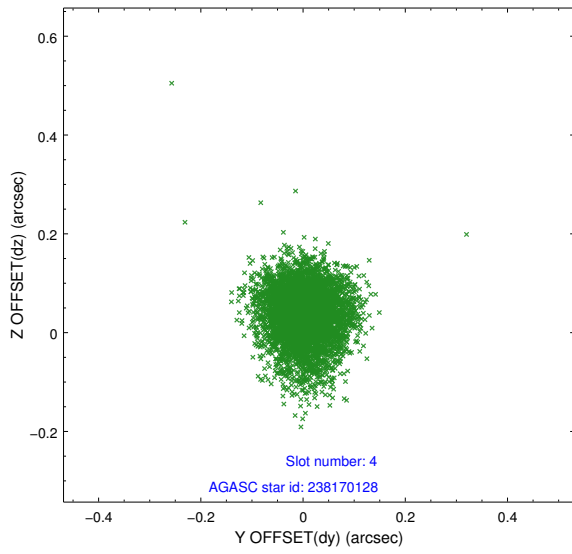
slot	status	id	mag	n_pts	med_dy	med_dz	dr1	dr2	ra	dec	mean_y	mean_z
0	FID	ACIS-S-1	7.19	2484	0.078	-0.059	0.007	0.011	0.000000	0.000000	929.63	-1729.91
1	FID	ACIS-S-4	7.20	2485	0.137	0.008	0.008	0.013	0.000000	0.000000	2147.42	173.76
2	FID	ACIS-S-5	7.23	2484	-0.243	0.064	0.007	0.013	0.000000	0.000000	-1818.86	168.07
3	GUIDE	238170056	8.49	4968	0.150	-0.010	0.070	0.111	60.674272	25.921413	983.92	-884.35
4	GUIDE	238170128	8.52	4968	0.001	0.038	0.072	0.119	60.574195	25.919035	980.26	-1208.75
5	GUIDE	238684544	8.21	4968	-0.063	0.034	0.061	0.104	60.473050	26.409051	-795.08	-1468.11
6	GUIDE	238293120	8.96	4967	-0.017	-0.061	0.079	0.125	61.497738	25.788215	1553.14	1765.96
7	GUIDE	238820712	9.17	4965	-0.070	0.006	0.076	0.124	61.059010	26.861252	-2353.40	475.94

2.4 Star Slots

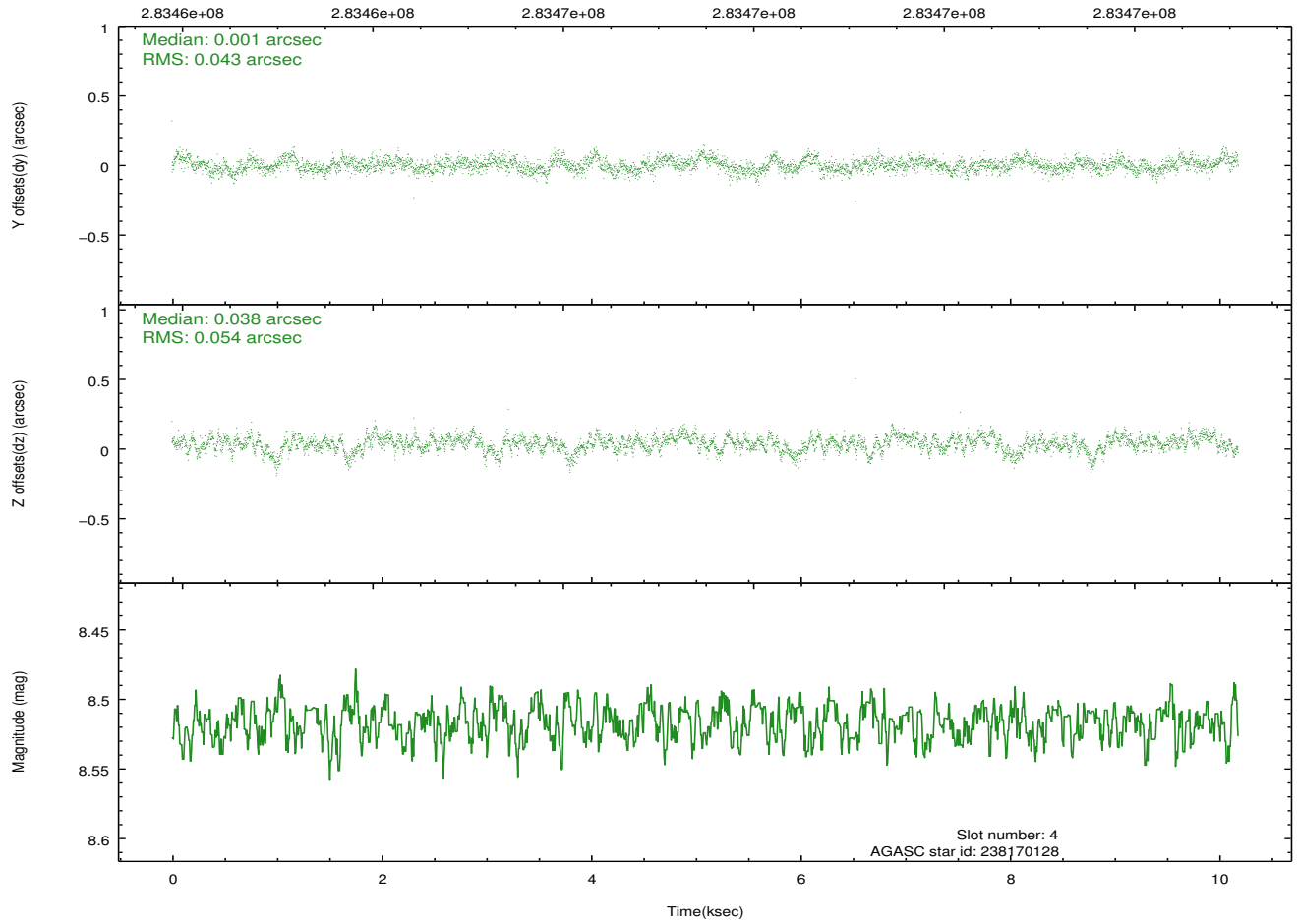
2.4.1 Slot 3



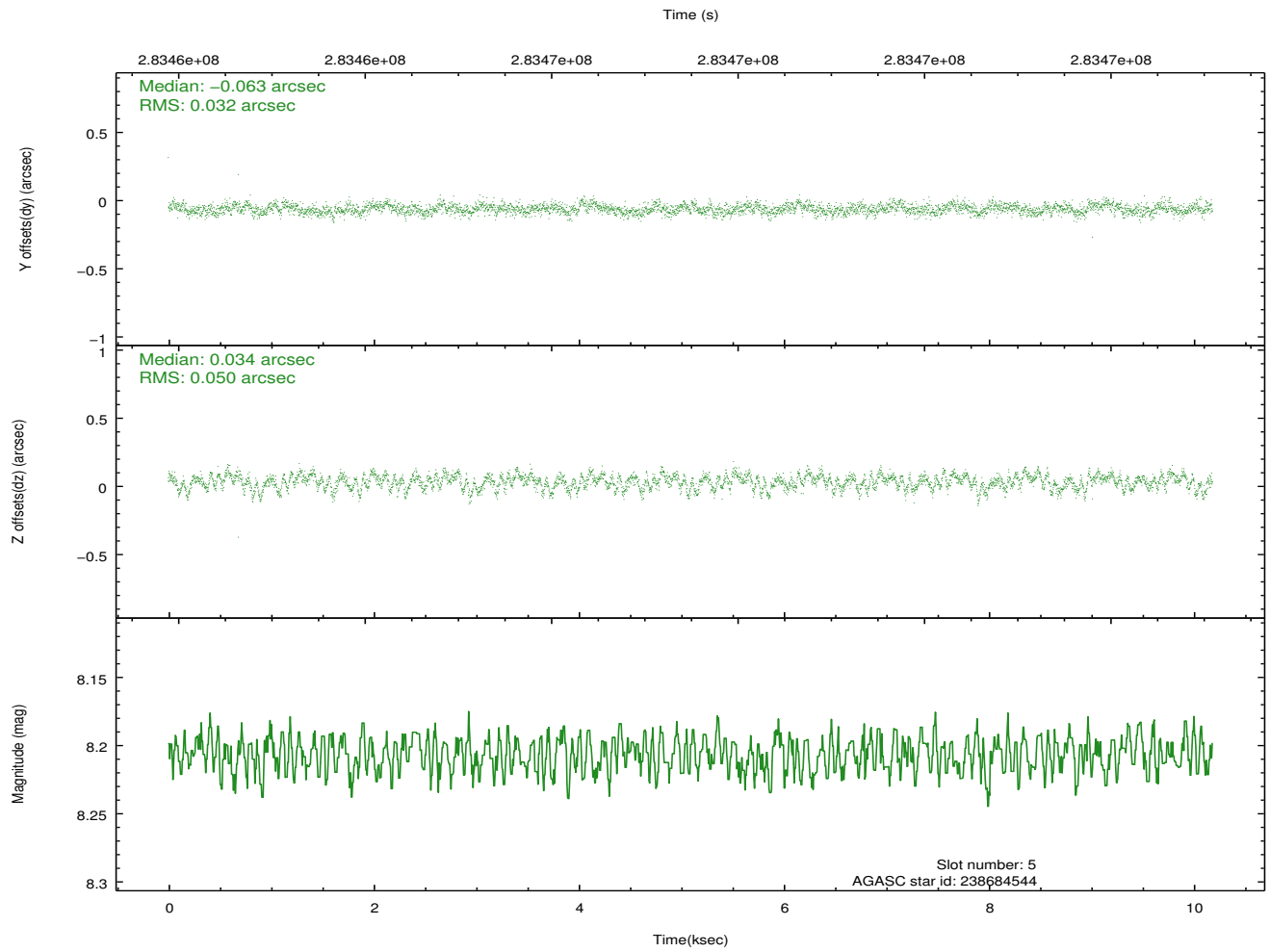
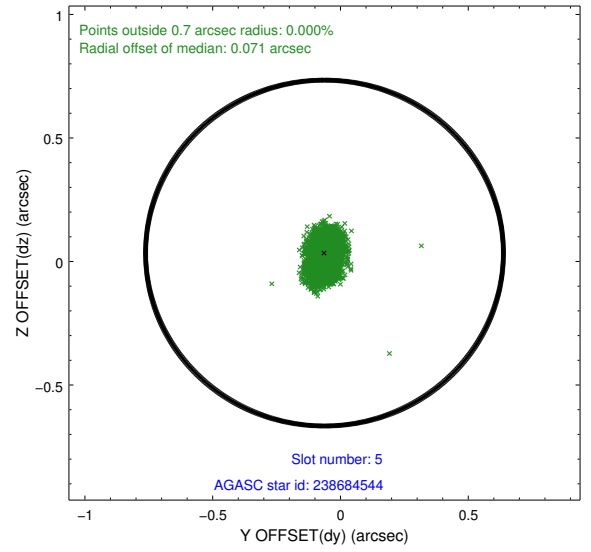
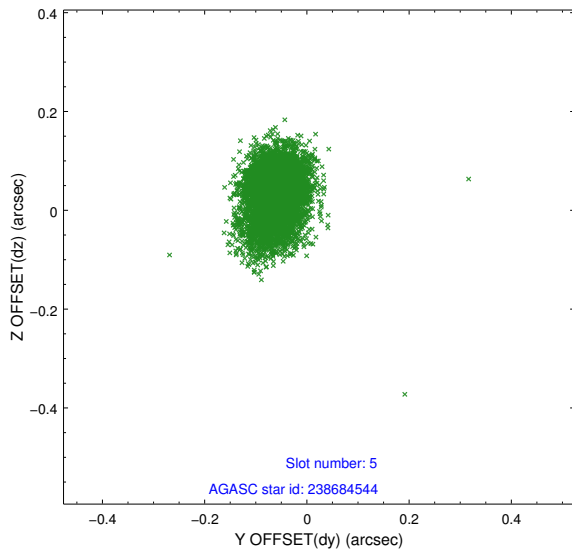
2.4.2 Slot 4



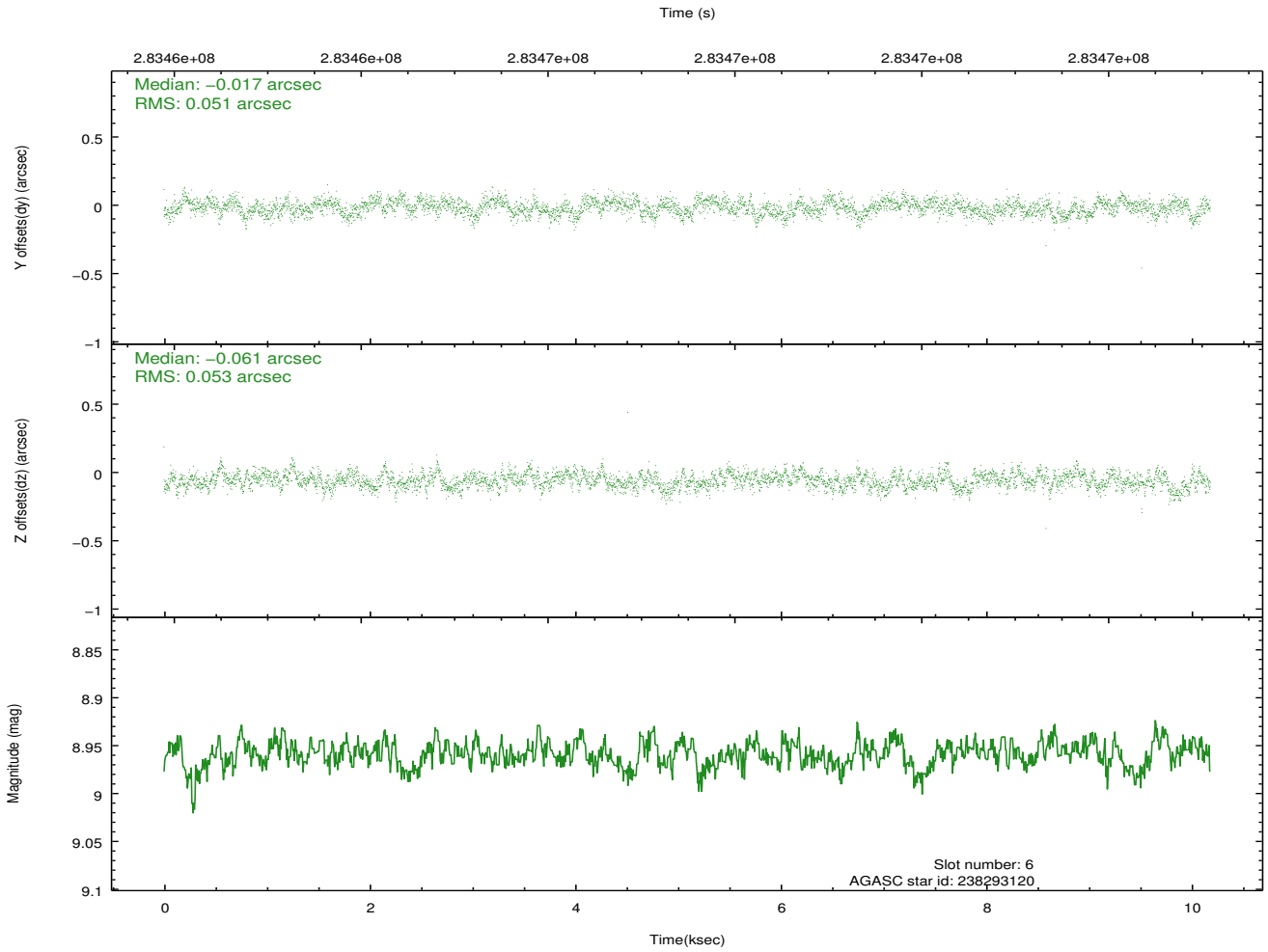
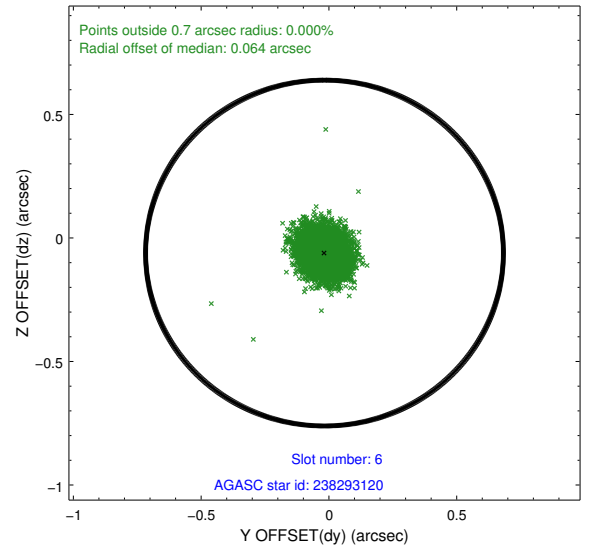
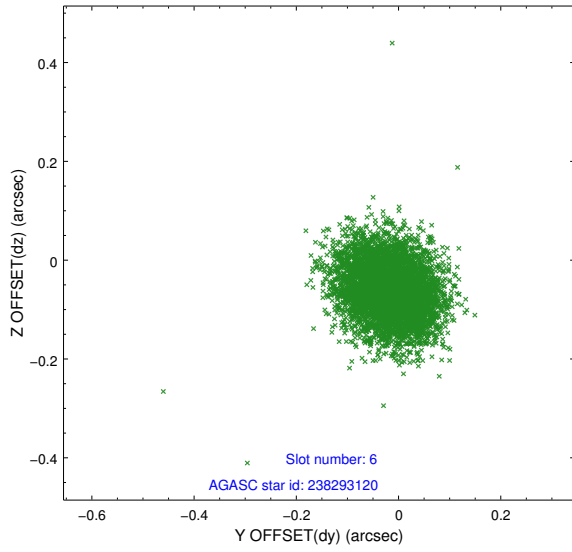
Time (s)



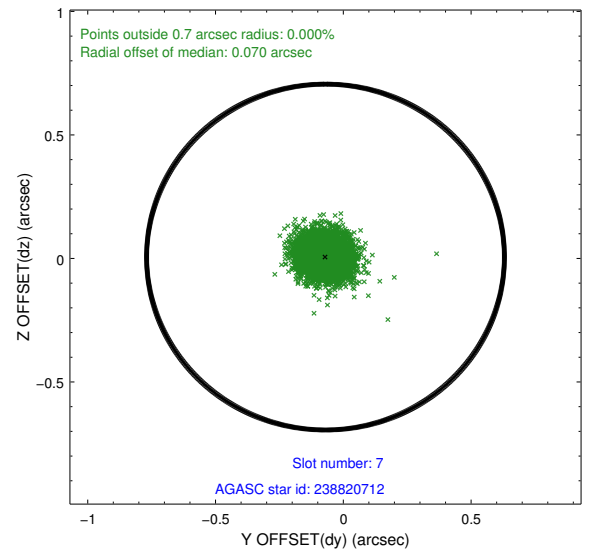
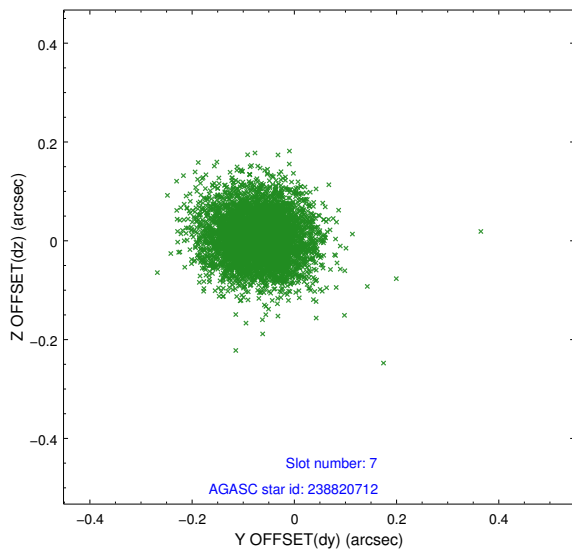
2.4.3 Slot 5



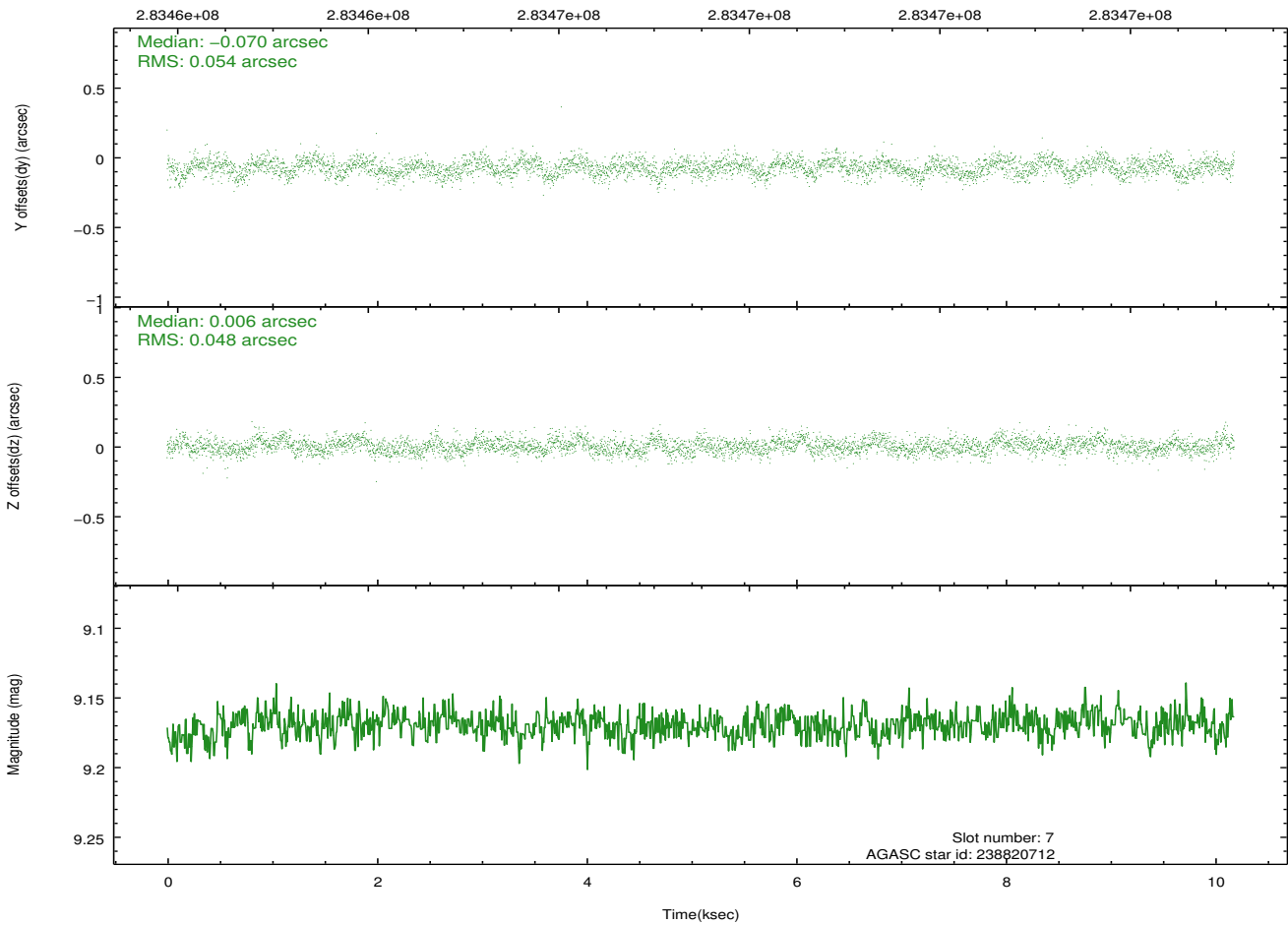
2.4.4 Slot 6



2.4.5 Slot 7

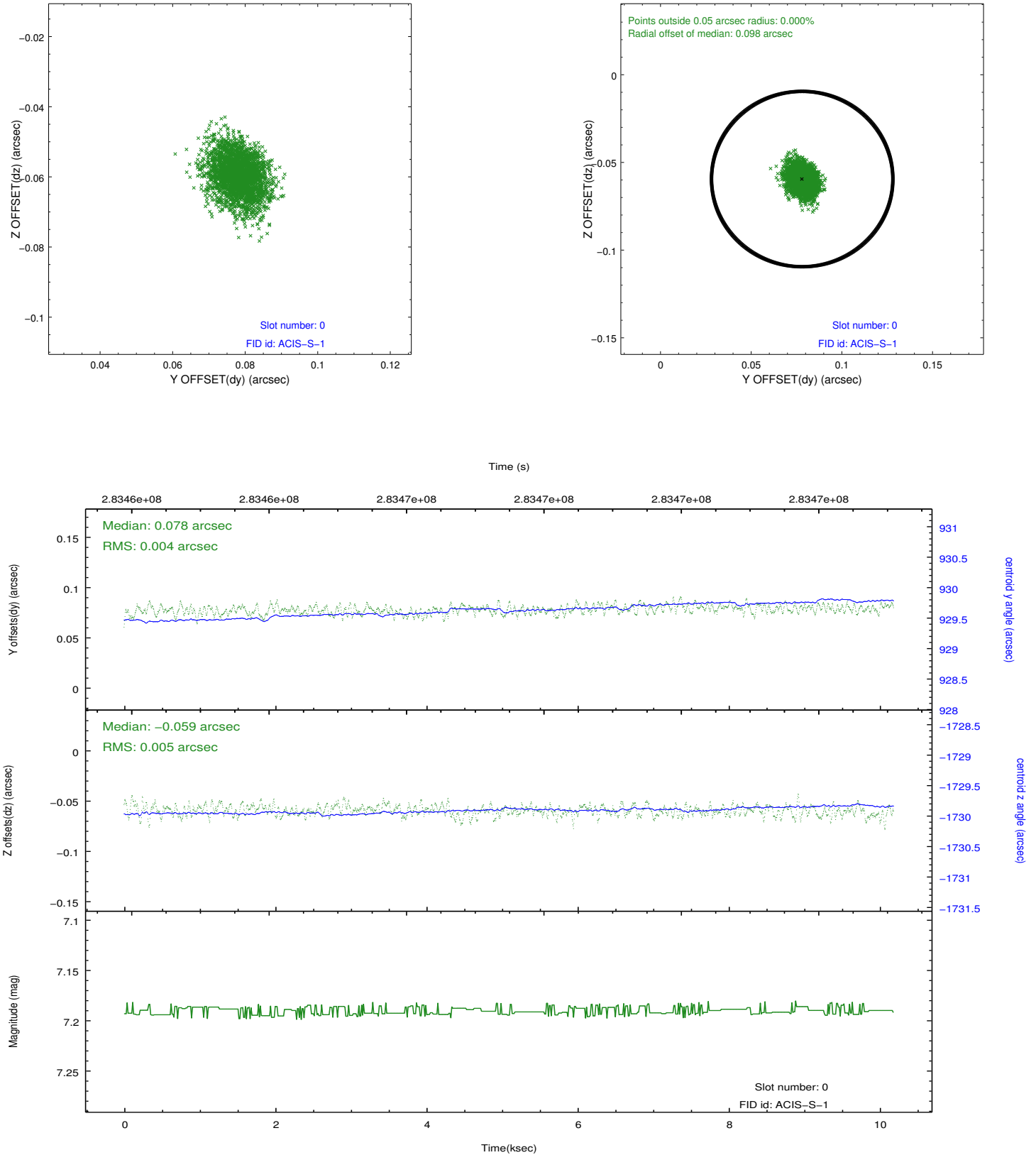


Time (s)

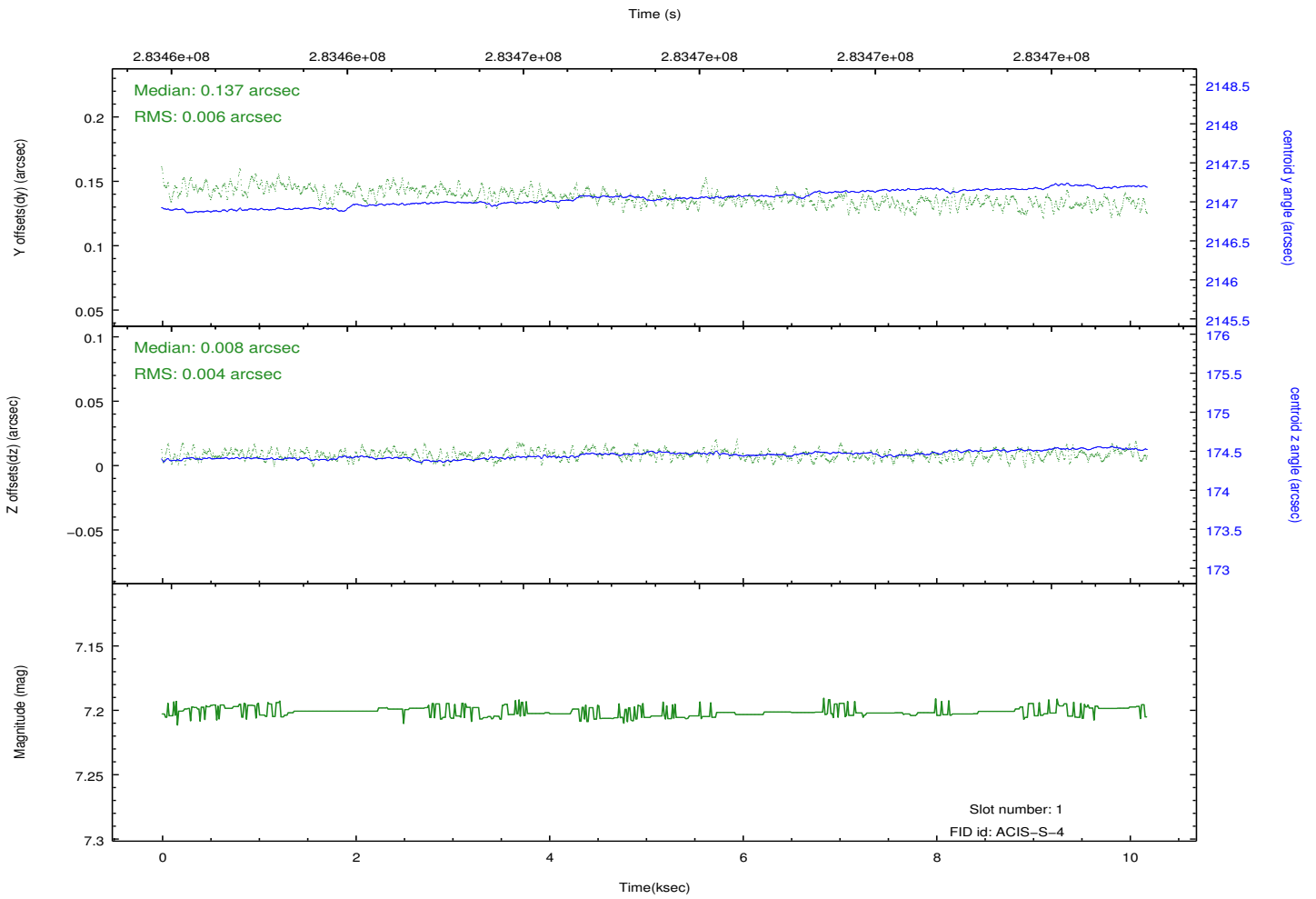
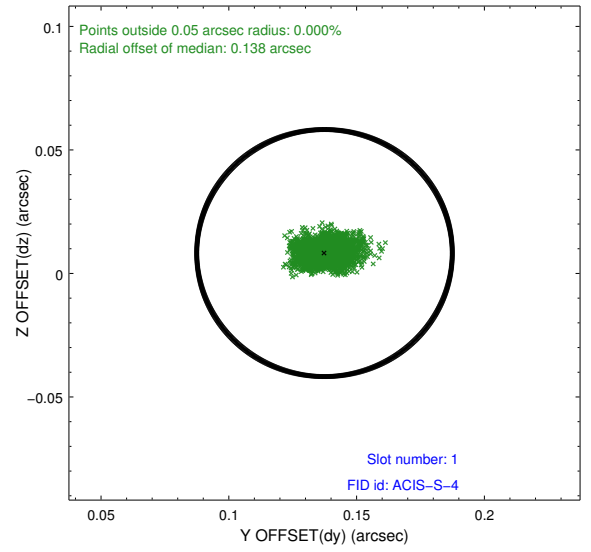
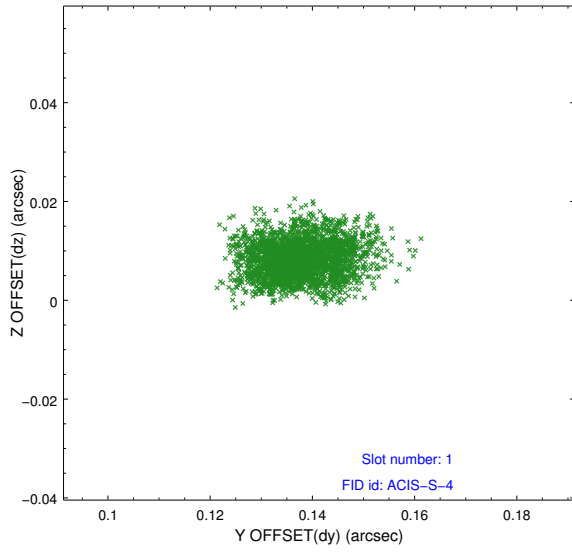


2.5 FID Slots

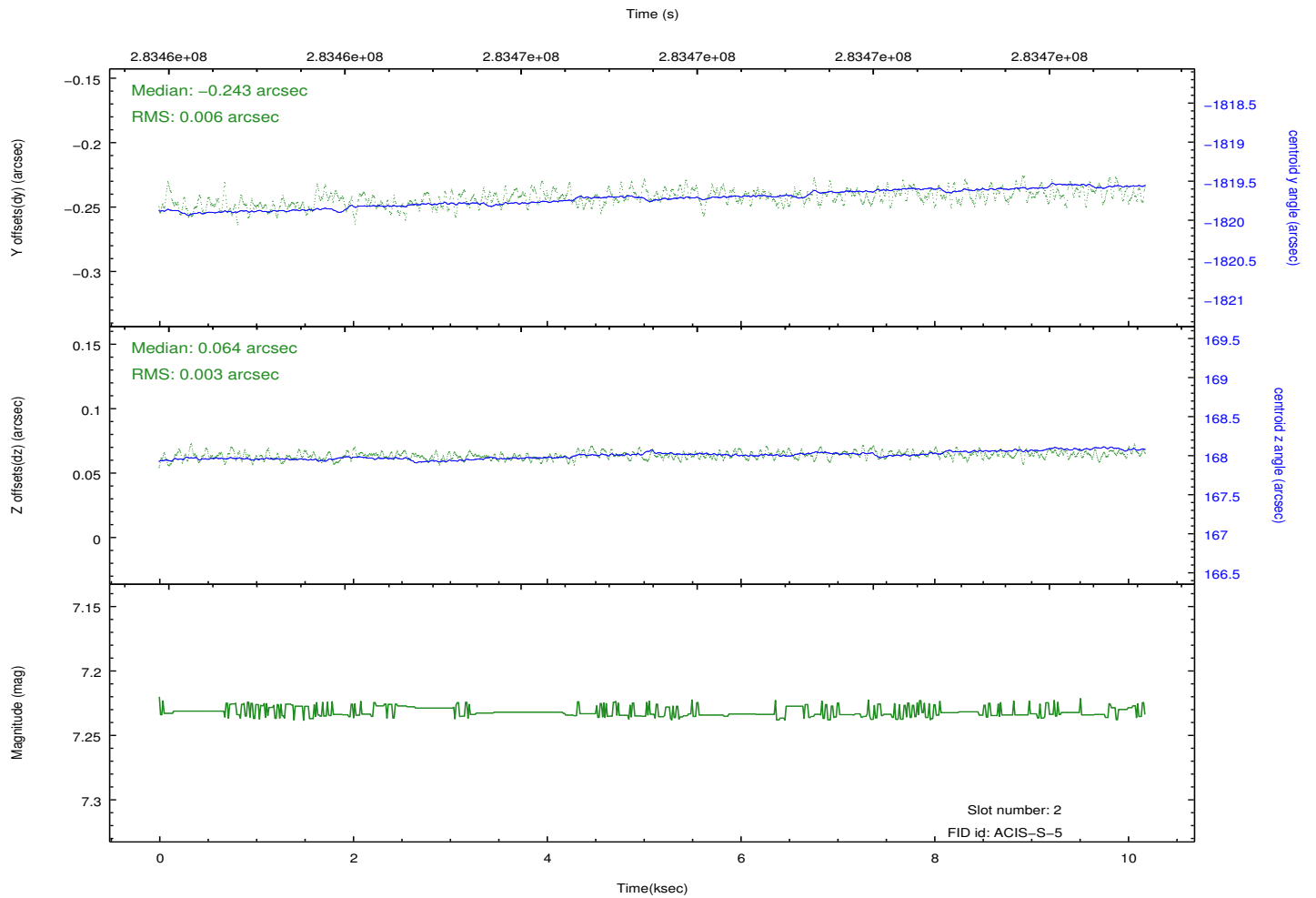
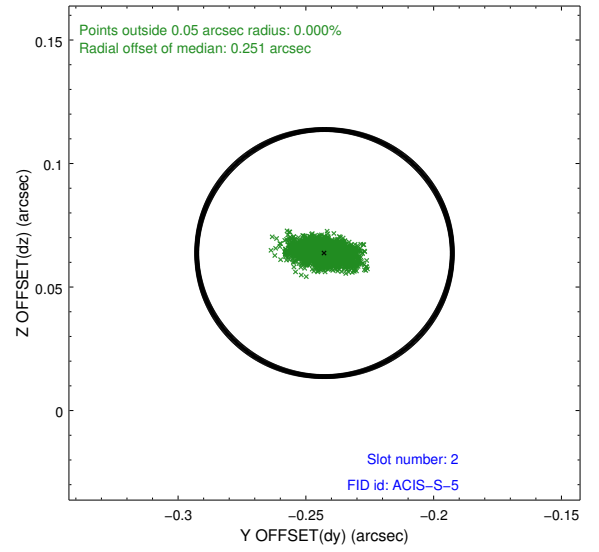
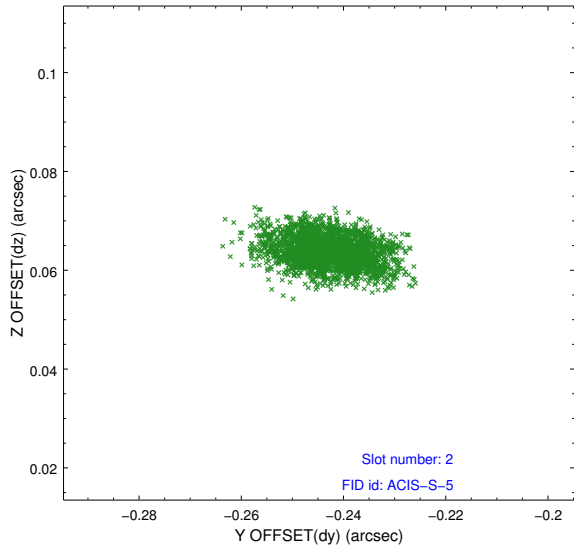
2.5.1 Slot 0



2.5.2 Slot 1



2.5.3 Slot 2



A Summary

A.1 Status

V&V Scientist	Jen Lauer
V&V Date (YYYY-MM-DD)	2012.04.18
V&V Edition	1
V&V Disposition and Status	OK
V&V Charge Time	10.1808

A.2 Comments