

V&V Reference Report

L2 ASCDS Version : 8.4.5

Observation 748 - L2 Version 6
Chandra X-Ray Center

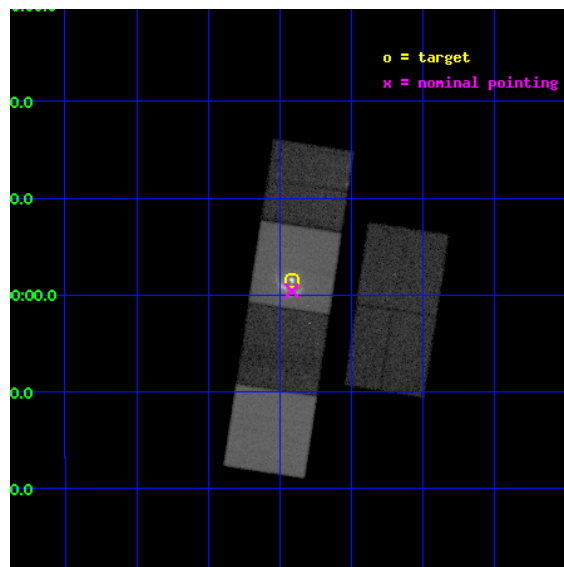
L2 Processing Date : Sep 18 2012

Contents

1	Front	2
2	OBI	3
2.1	OBI	3
2.1.1	Images	3
2.1.2	Bias	3
2.1.3	Parameters	4
2.1.4	Events	4
2.2	Compared Parameters	5
2.3	Aspect	6
2.4	Star Slots	9
2.4.1	Slot 3	9
2.4.2	Slot 5	10
2.4.3	Slot 6	11
2.4.4	Slot 7	12
2.5	FID Slots	13
2.5.1	Slot 0	13
2.5.2	Slot 1	14
2.5.3	Slot 2	15
A	Summary	16
A.1	Status	16
A.2	Comments	16

1 Front

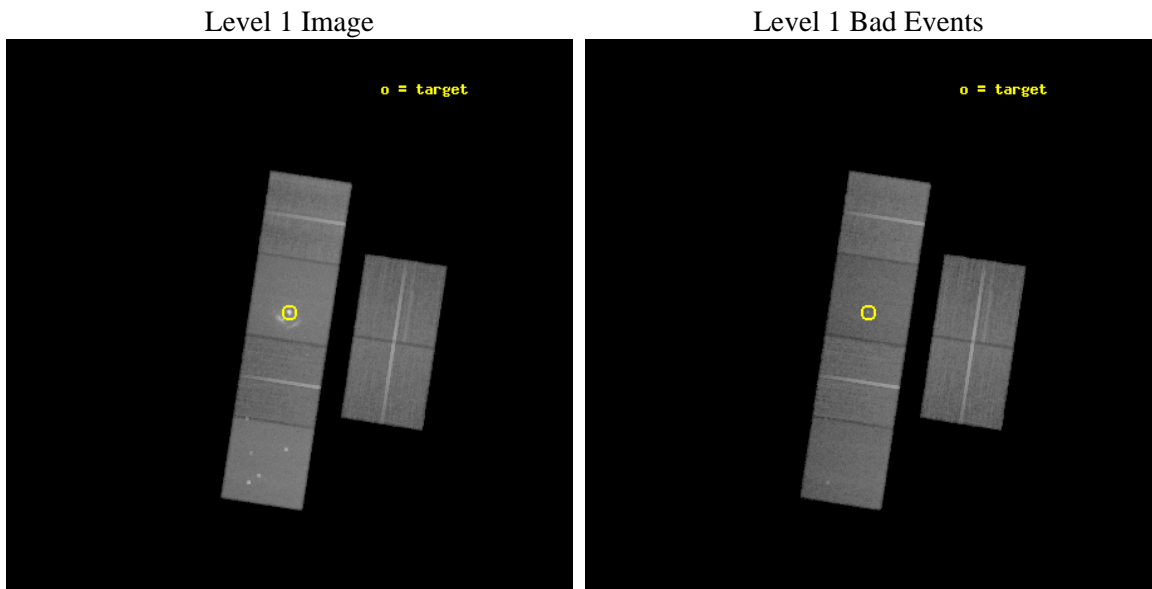
seq_num	500044	Sequence number
obs_id	748	Observation id
title	G29.7-0.3: A SUPERNOVA REMNANT LIKE IT OTTA BE	Proposal title
observer	Prof. David Helfand	Principal investigator
object	G29.7-0.3	Source name
dtycycle	0	
cycle	P	events from which exps? Prim/Second/Both
ra_targ	281.602917	Observer's specified target RA [deg]
dec_targ	-2.976111	Observer's specified target Dec [deg]
ra_nom	281.60366679378	Nominal RA [deg]
dec_nom	-2.9929187036513	Nominal Dec [deg]
roll_nom	278.71371330235	Nominal Roll [deg]
revision	6	Processing version of data
ontime	37756.633350566	Sum of GTIs [s]
livetime	37278.536124766	Livetime [s]
ontime2	37756.674390569	Sum of GTIs [s]
ontime3	37756.510230571	Sum of GTIs [s]
ontime5	37756.592310563	Sum of GTIs [s]
ontime6	37753.310310334	Sum of GTIs [s]
ontime7	37756.633350566	Sum of GTIs [s]
ontime8	37756.469050959	Sum of GTIs [s]
l2events	451046	Number of level 2 events



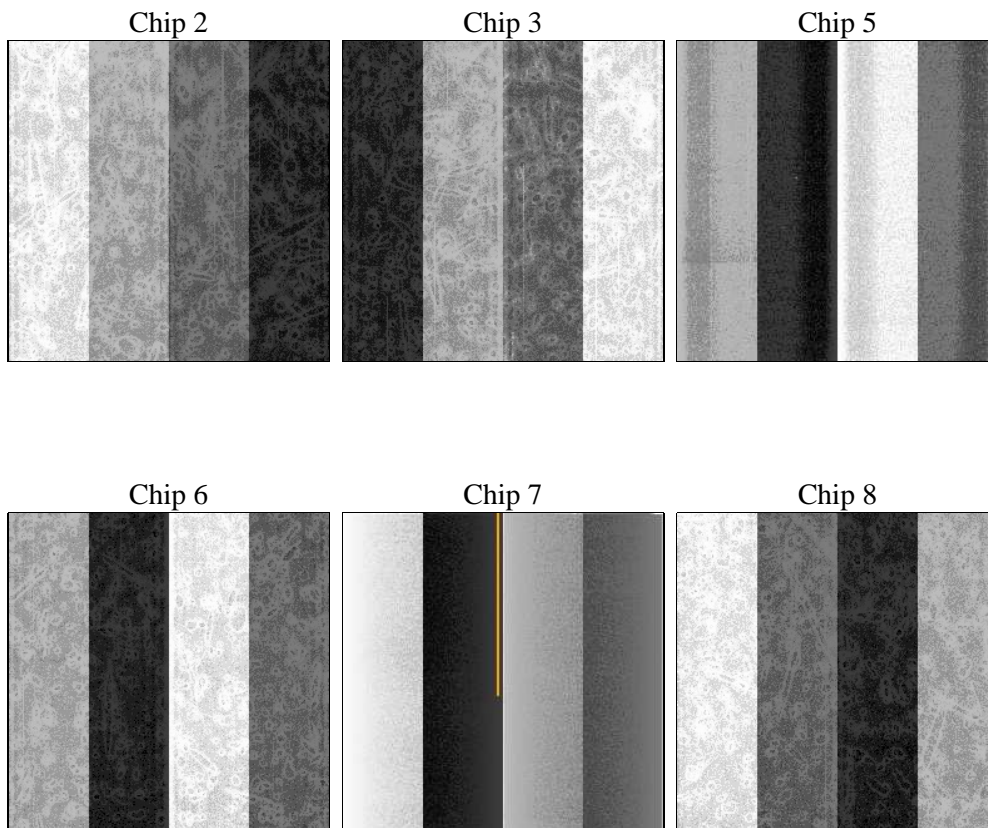
2 OBI

2.1 OBI

2.1.1 Images



2.1.2 Bias



2.1.3 Parameters

obi_num	1	Obi number	sched_exp_time	38000.000000	[s] Scheduled observation exposure time
ascdsver	8.4.5	Processing system revision	ontime	37756.633350566	Sum of GTIs [s]
caldsver	4.5.1.1	 	ontime2	37756.674390569	Sum of GTIs [s]
date	2012-09-18T17:47:19	Date and time of file creation	ontime3	37756.510230571	Sum of GTIs [s]
revision	6	Processing version of data	ontime5	37756.592310563	Sum of GTIs [s]
			ontime6	37753.310310334	Sum of GTIs [s]
			ontime7	37756.633350566	Sum of GTIs [s]
			ontime8	37756.469050959	Sum of GTIs [s]
			l1events	1757871	Number of level 1 events

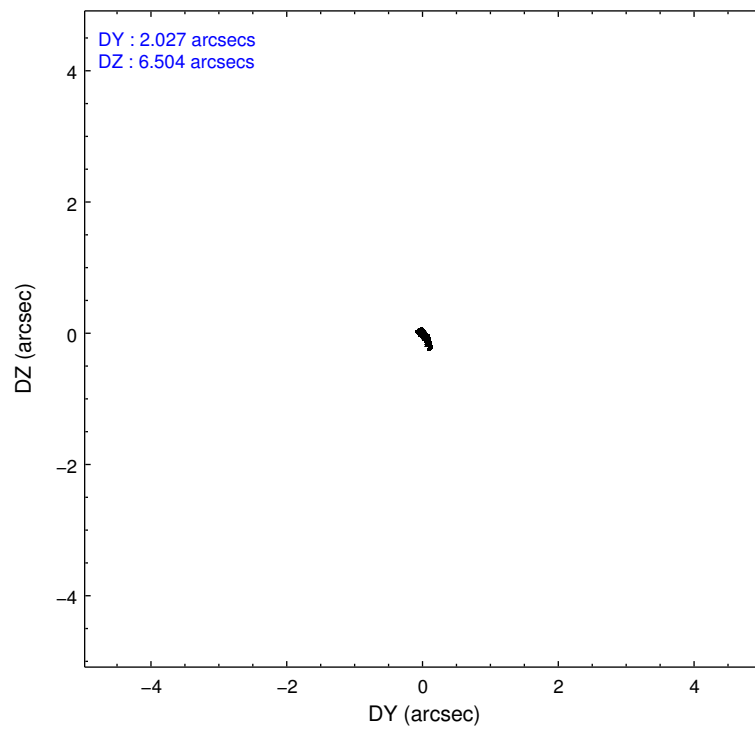
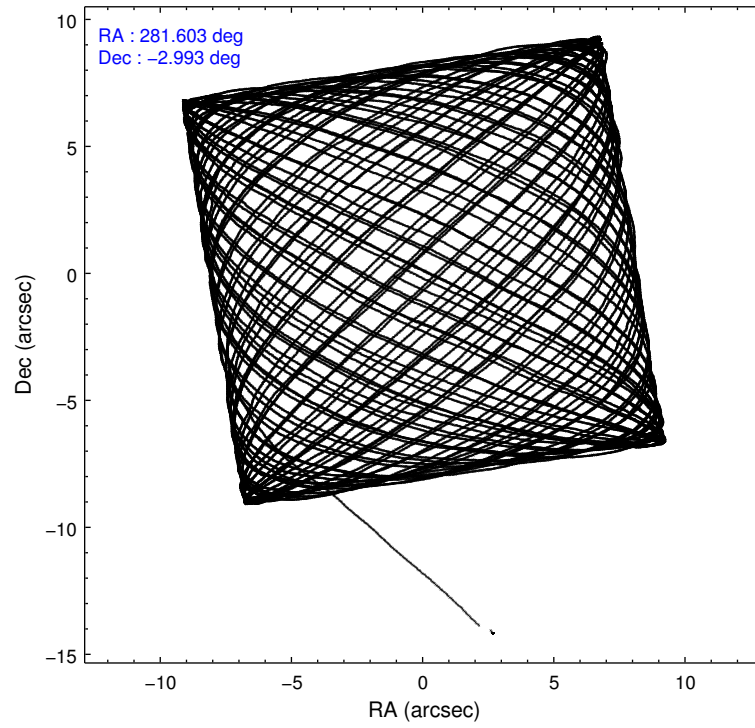
2.1.4 Events

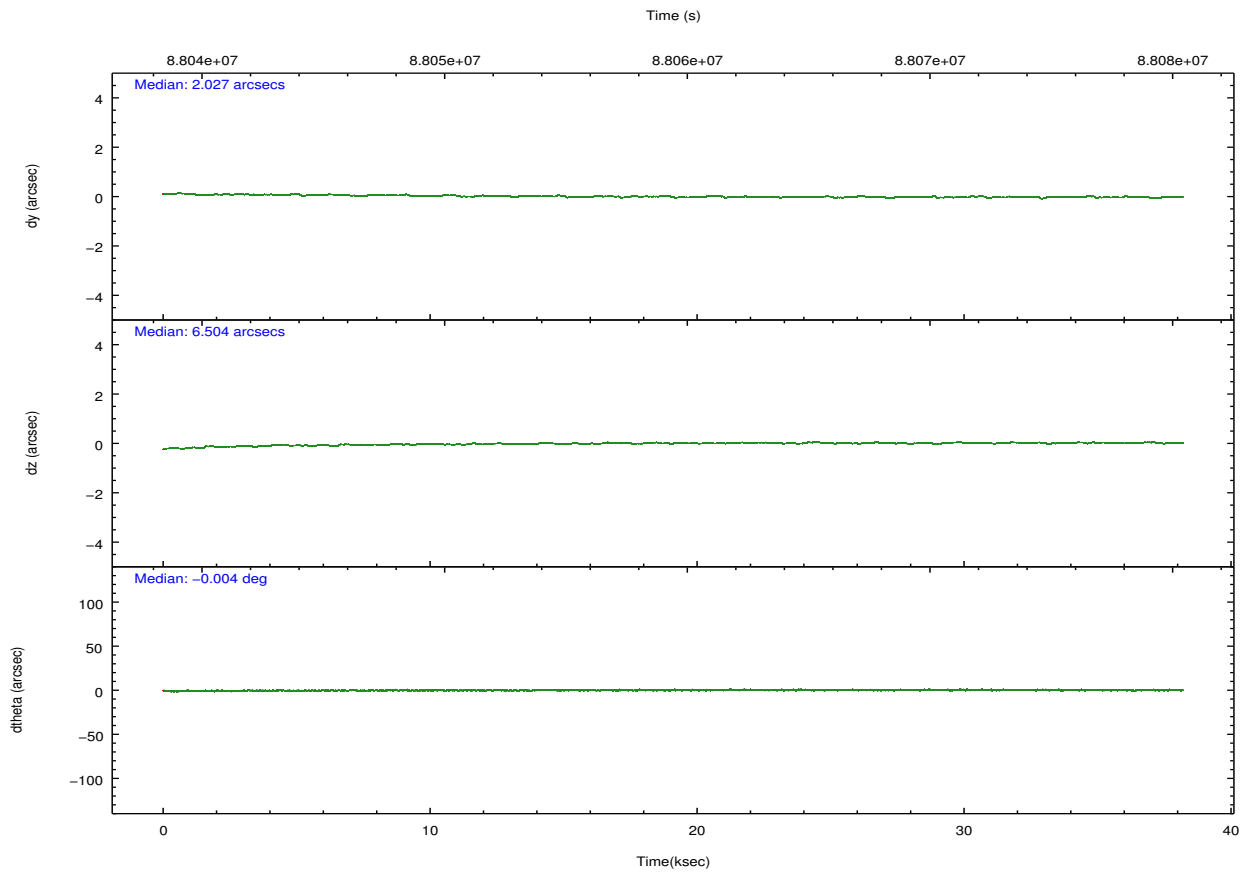
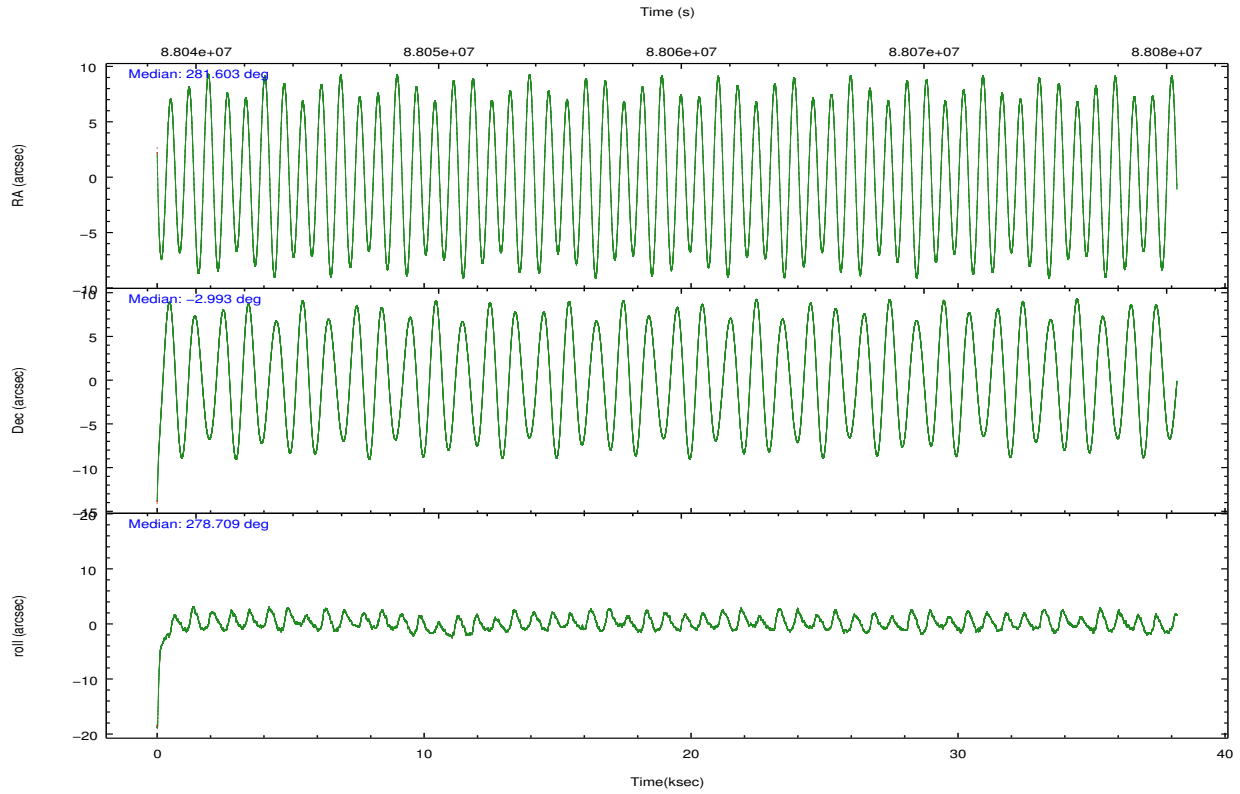
	ccd 2	ccd 3	ccd 5	ccd 6	ccd 7	ccd 8		ccd 2	ccd 3	ccd 5	ccd 6	ccd 7	ccd 8
level 1 events	249757	242683	338177	248380	369540	309334	grade 0 events	13143	13192	21343	13859	27076	22053
rejected events	220633	213958	175748	217392	172183	244578		5%	5%	6%	5%	7%	7%
rejected %	88%	88%	51%	87%	46%	79%	grade 1 events	104	118	883	108	349	187
								0%	0%	0%	0%	0%	0%
							grade 2 events	5865	5485	45495	5829	42583	13470
								2%	2%	13%	2%	11%	4%
							grade 3 events	2680	2687	7641	2854	19442	6957
								1%	1%	2%	1%	5%	2%
							grade 4 events	2592	2666	7424	2900	19289	6386
								1%	1%	2%	1%	5%	2%
							grade 5 events	7961	8586	25023	9540	28751	12008
								3%	3%	7%	3%	7%	3%
							grade 6 events	4844	4696	80552	5550	88978	15895
								1%	1%	23%	2%	24%	5%
							grade 7 events	212568	205253	149816	207740	143072	232378
								85%	84%	44%	83%	38%	75%

2.2 Compared Parameters

Parameter	Planned	Actual	Parameter	Planned	Actual
Instrument	ACIS	ACIS	Obspar format version number	7	7
Detector	ACIS-235678	ACIS-235678	Obspar file type	PREDICTED	ACTUAL
Grating	NONE	NONE	Obspar update status	NONE	UPDATED
Data mode	FAINT	FAINT	Number of optional ACIS chips dropped	0	0
Observation mode	POINTING	POINTING	On-chip summing requested	N	N
[deg] Pointing RA	281.586388	281.6036667937847	Subarray requested	NONE	NONE
[deg] Pointing Dec	-2.971682	-2.992918703651327	Alternating exposures requested	N	N
[deg] Pointing Roll	278.556189	278.7137133023548	[s] Primary exposure time	0.000000	3.2
[mm] SIM focus pos	-0.684267	-0.6828225247311905			
[mm] SIM defocus	0	0.001444936568705701			
[mm] SIM translation stage pos	-190.132523	-190.1400660498719			
[mm] SIM translation stage offset	0	0.00754346686406393			
[s] Observation start time (MET)	88040512.184000	88039834.997927			
Observation start date	2000-10-15T23:40:48	2000-10-15T23:30:34			
[s] Observation end time (MET)	88078512.184000	88079672.136932			
Observation end date	2000-10-16T10:14:08	2000-10-16T10:34:32			
Read mode	TIMED	TIMED			

2.3 Aspect



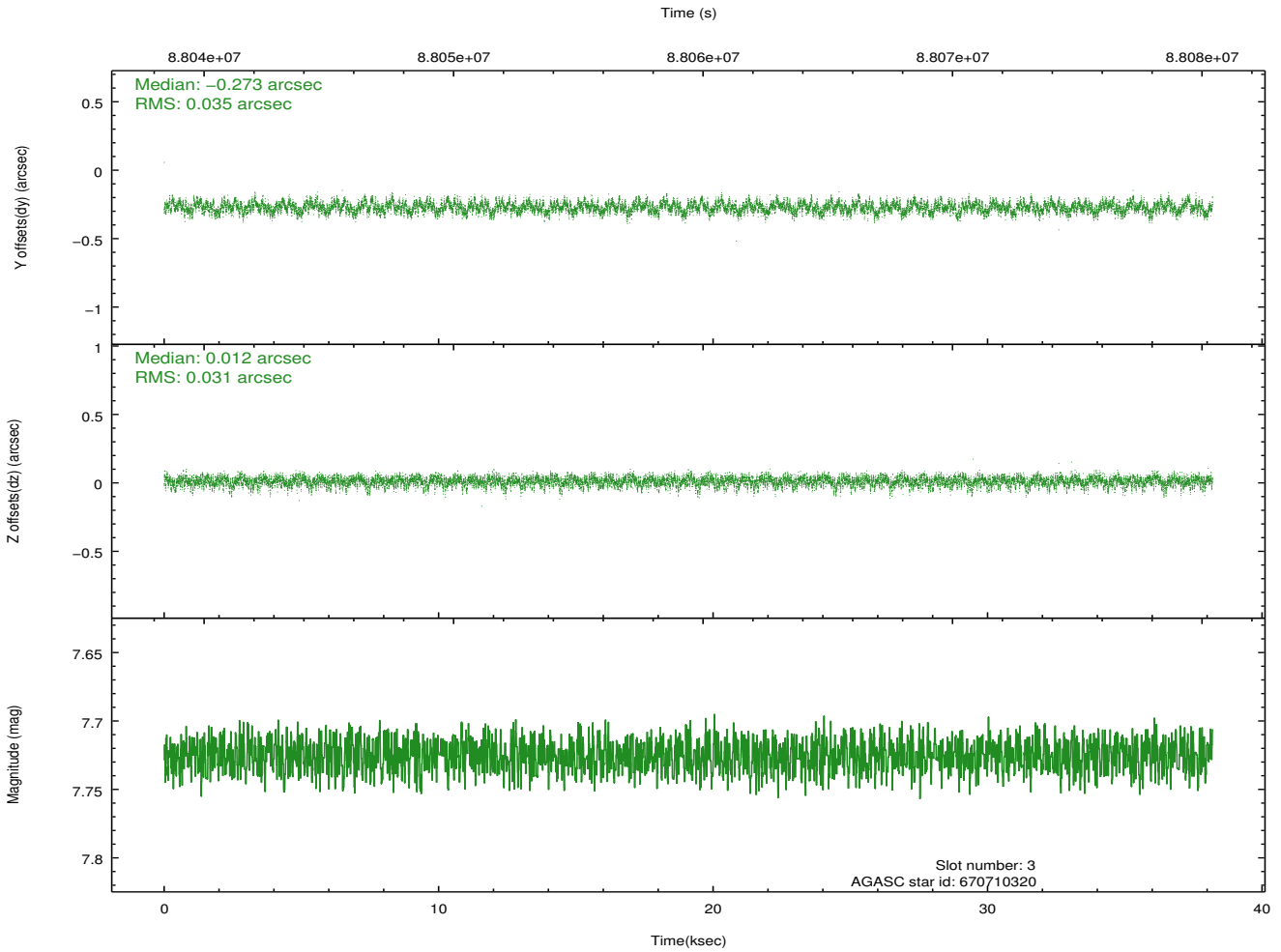
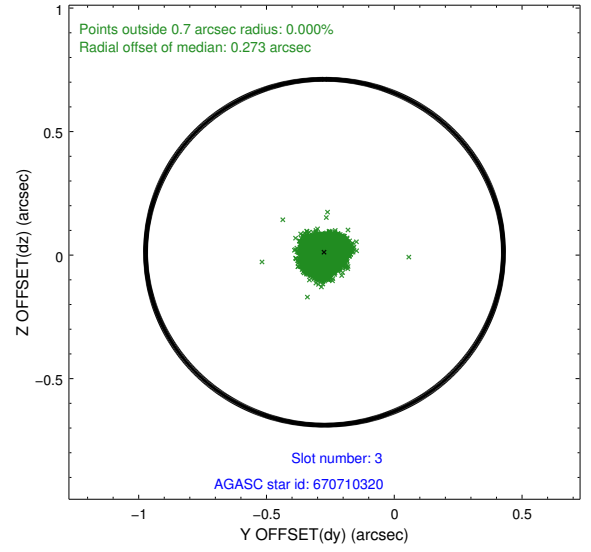
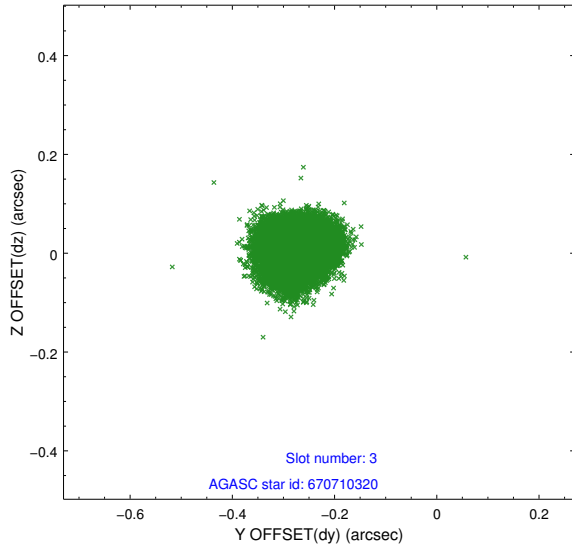


Slot Statistics

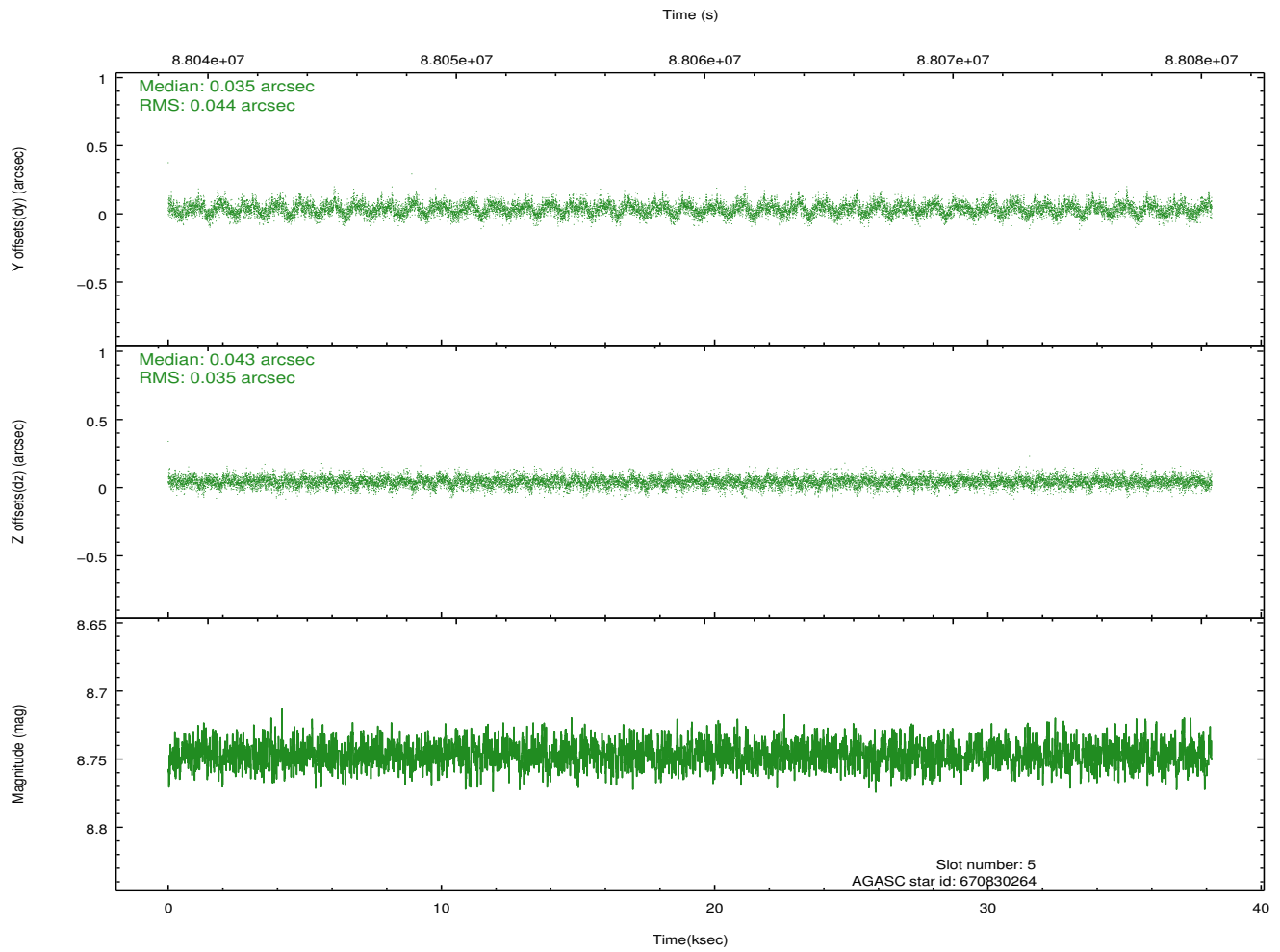
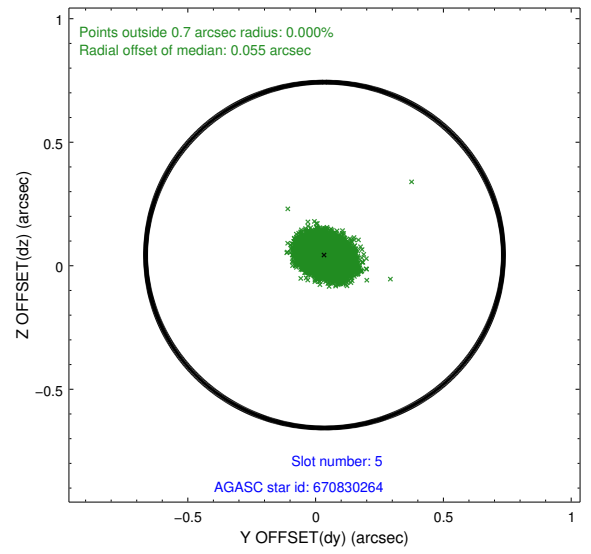
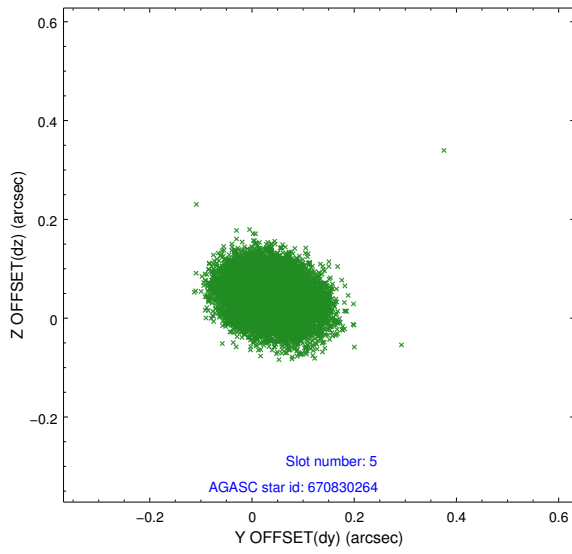
slot	status	id	mag	n_pts	med_dy	med_dz	dr1	dr2	ra	dec	mean_y	mean_z
0	FID	ACIS-S-2	7.11	9315	-0.037	0.000	0.007	0.011	0.000000	0.000000	-754.68	-1727.64
1	FID	ACIS-S-4	7.20	9314	-0.019	0.018	0.006	0.011	0.000000	0.000000	2158.59	180.85
2	FID	ACIS-S-5	7.23	9316	0.025	-0.009	0.007	0.012	0.000000	0.000000	-1807.44	174.50
3	GUIDE	670710320	7.72	18625	-0.273	0.012	0.050	0.081	281.093022	-2.489215	-1980.94	-1496.03
4	OMITTED		0.00	0	0.000	0.000	0.000	0.000	0.000000	0.000000	0.00	0.00
5	GUIDE	670830264	8.75	18629	0.035	0.043	0.059	0.097	281.361536	-3.231556	805.41	-937.82
6	GUIDE	670713072	9.02	18629	0.215	-0.015	0.073	0.119	281.205407	-3.604132	2048.94	-1691.80
7	GUIDE	670714008	9.03	18621	0.024	-0.038	0.069	0.110	281.129237	-3.153193	402.74	-1721.79

2.4 Star Slots

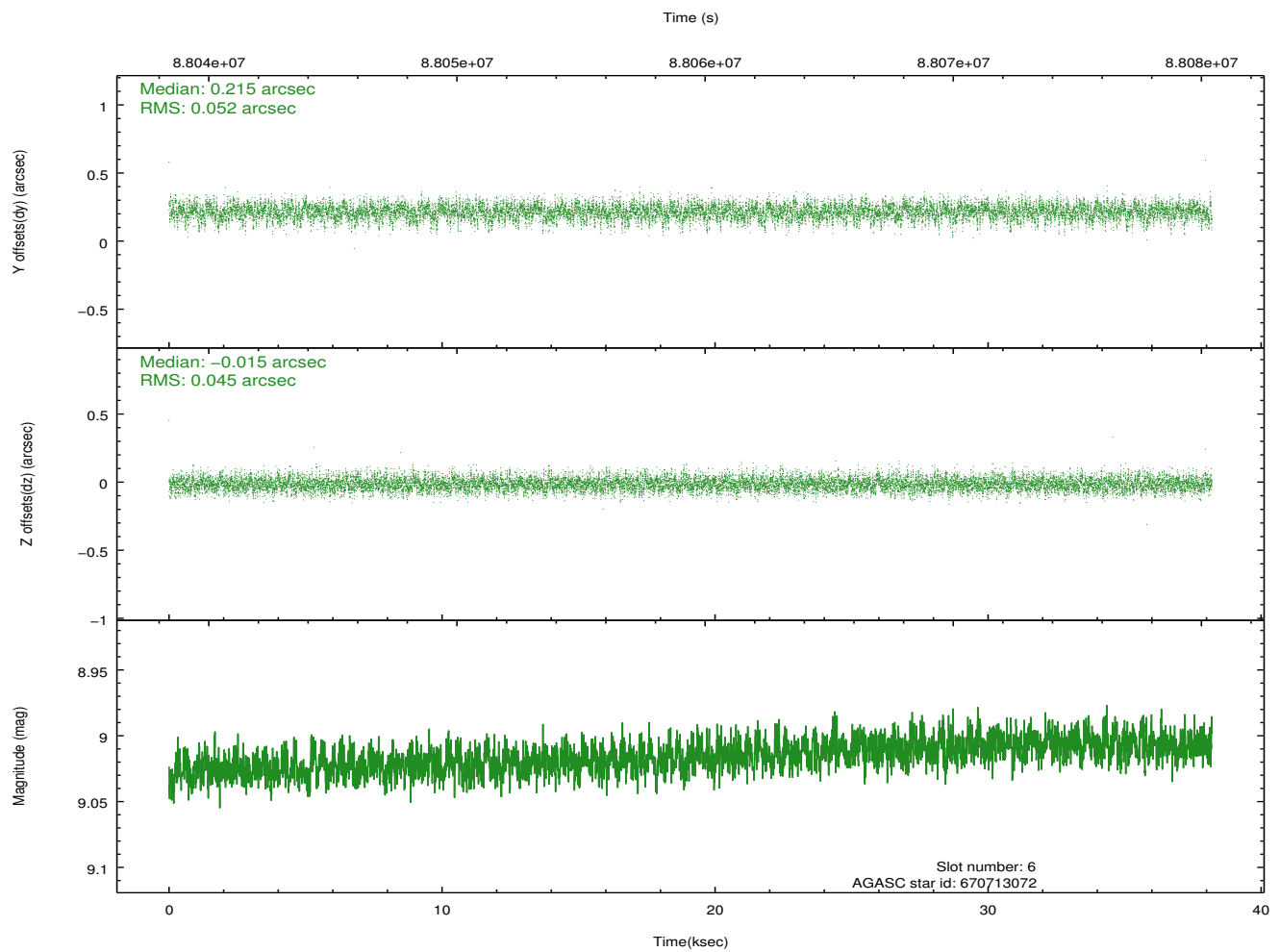
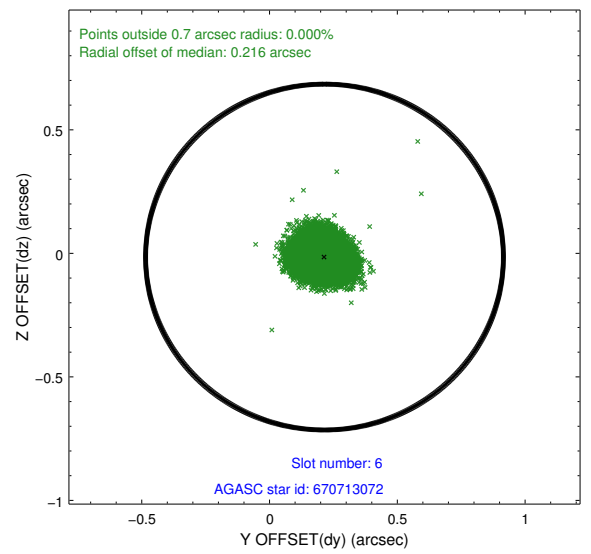
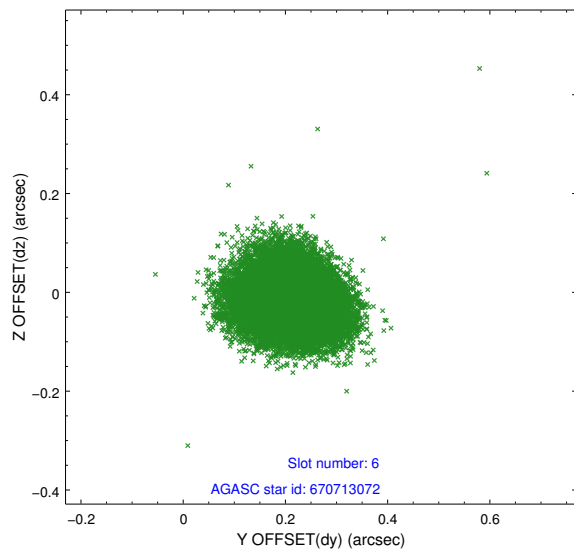
2.4.1 Slot 3



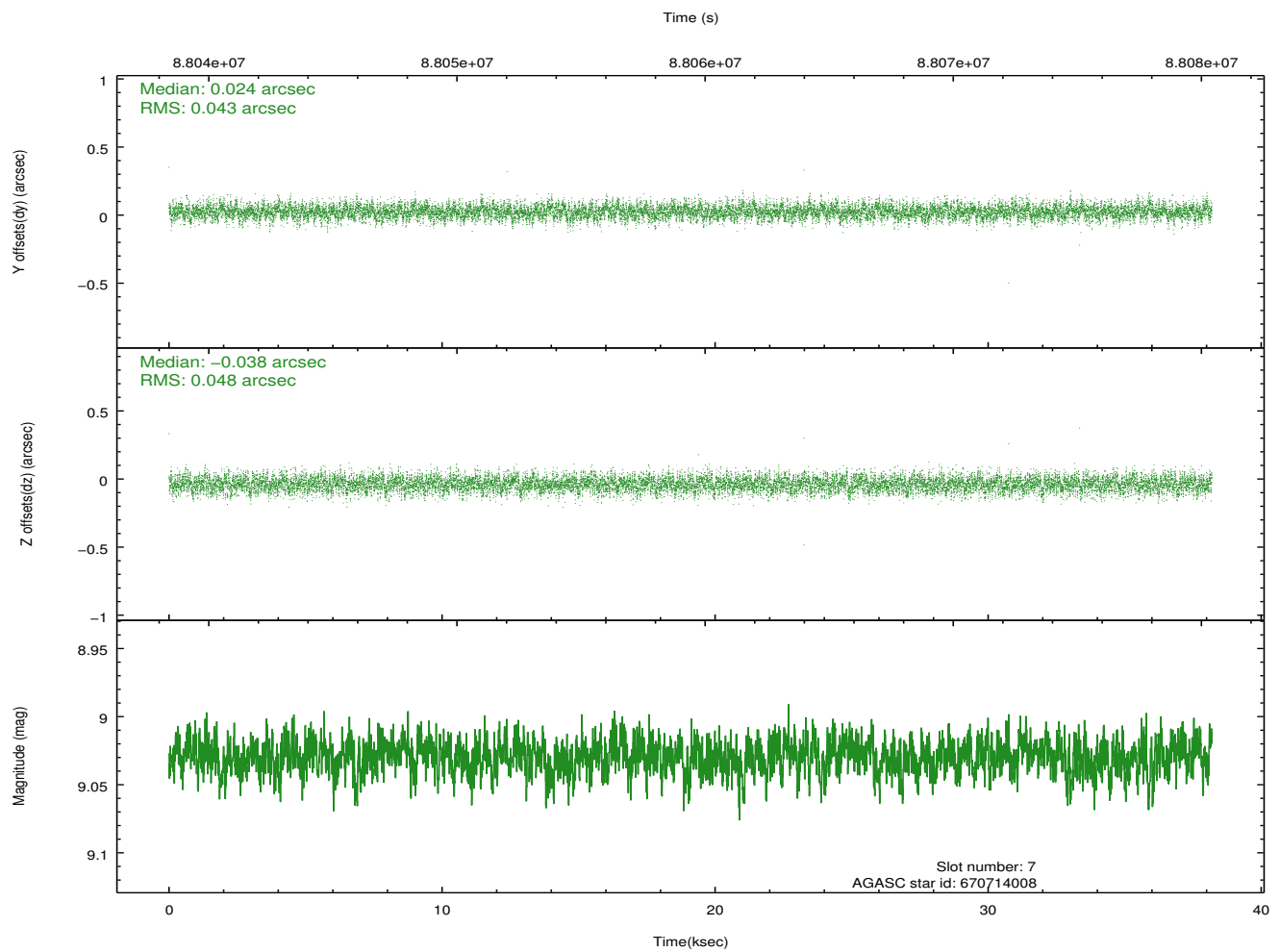
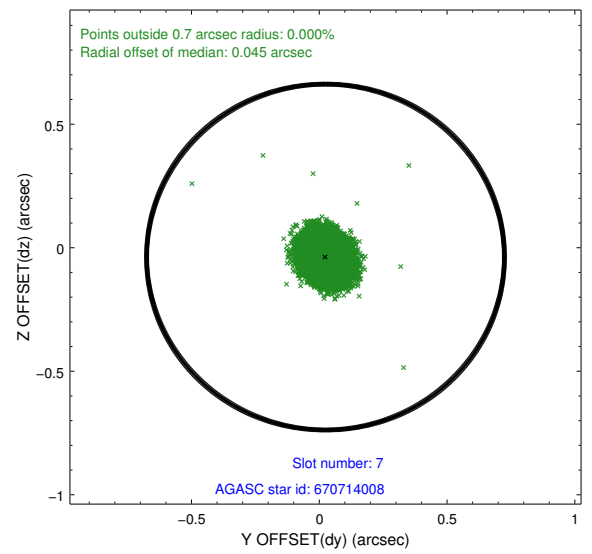
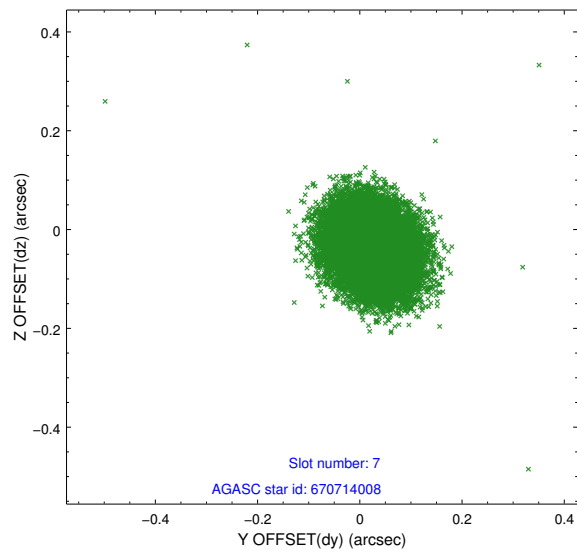
2.4.2 Slot 5



2.4.3 Slot 6

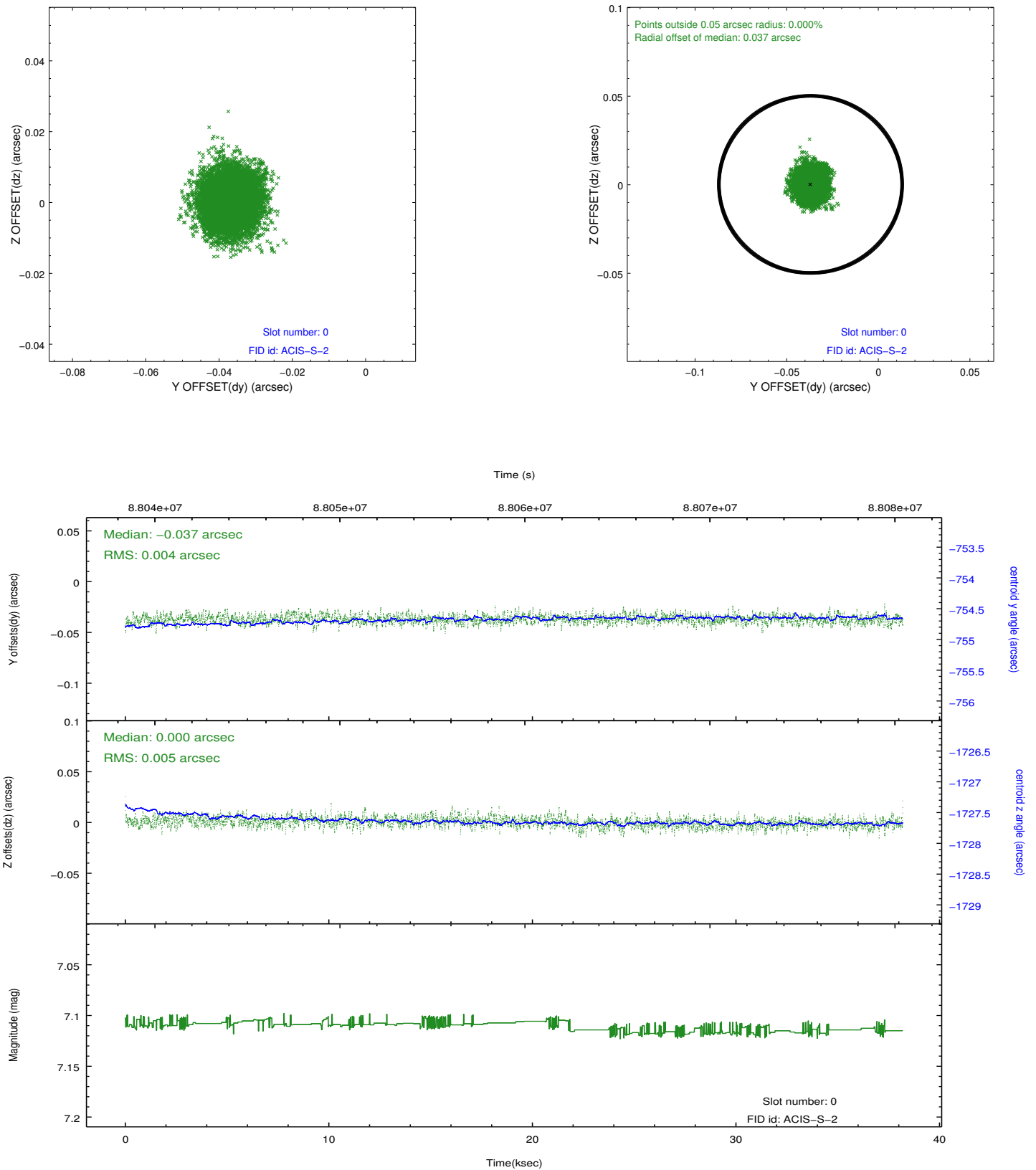


2.4.4 Slot 7

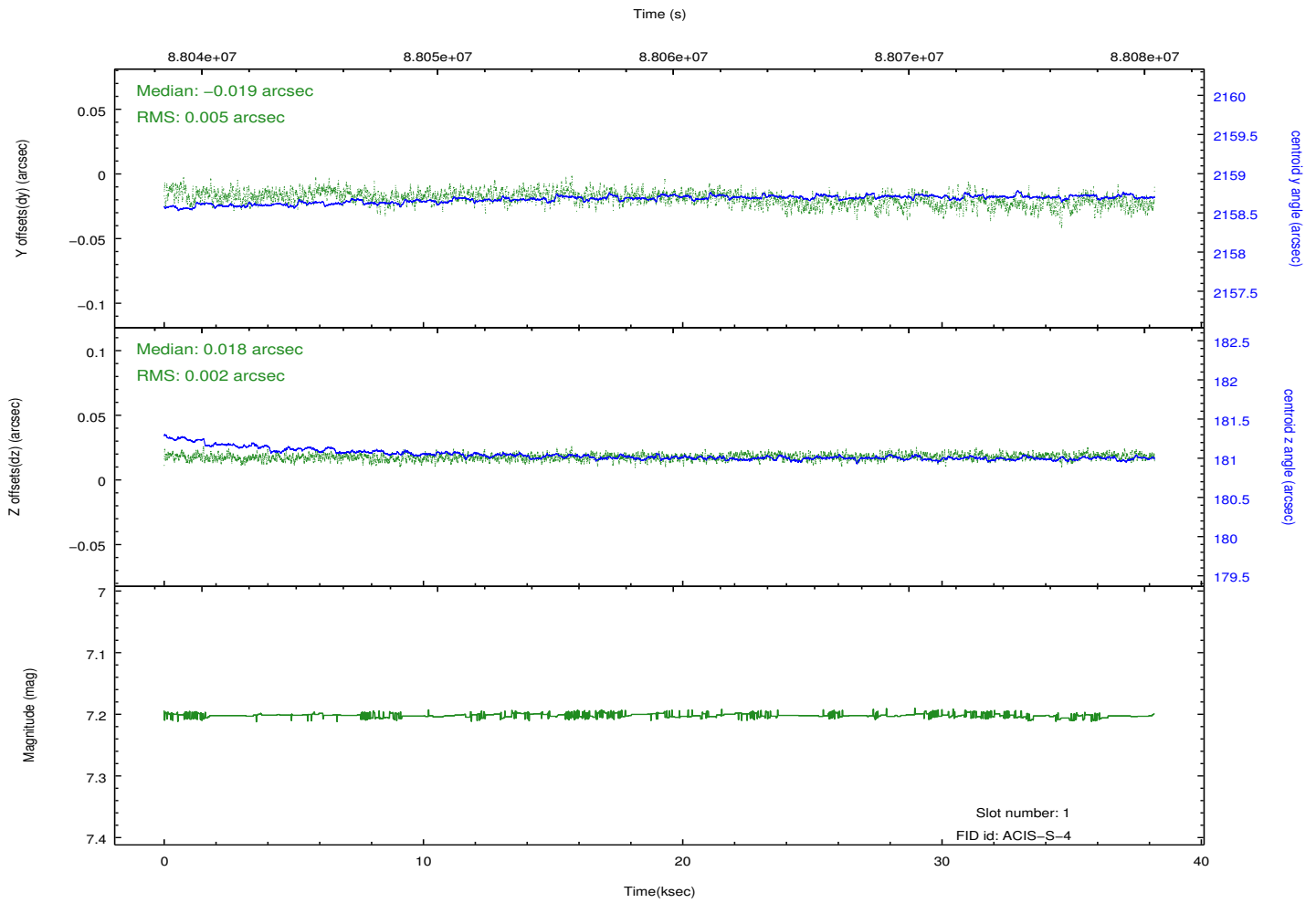
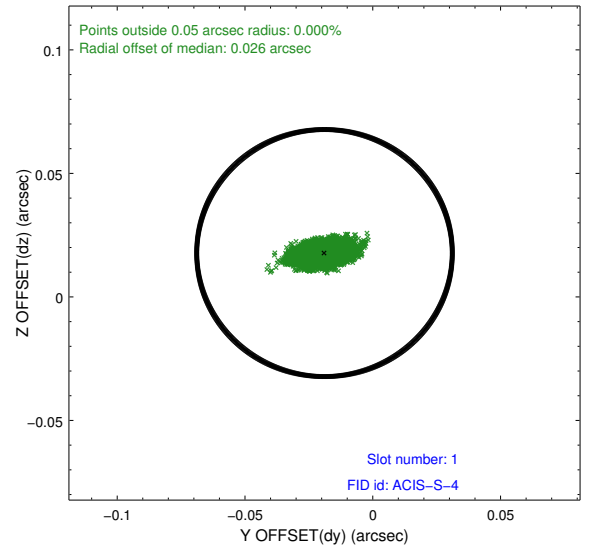
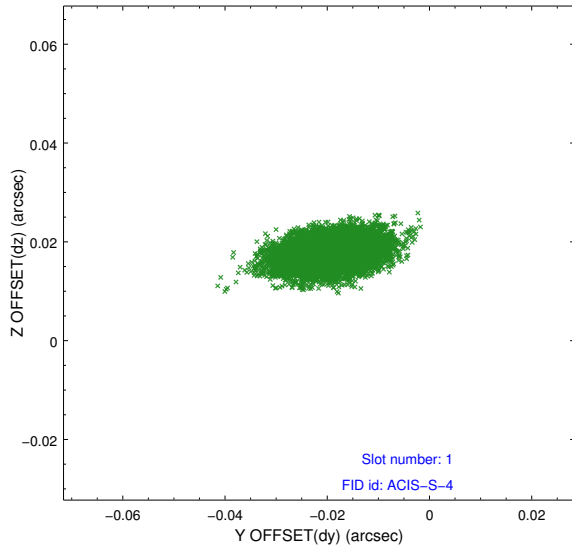


2.5 FID Slots

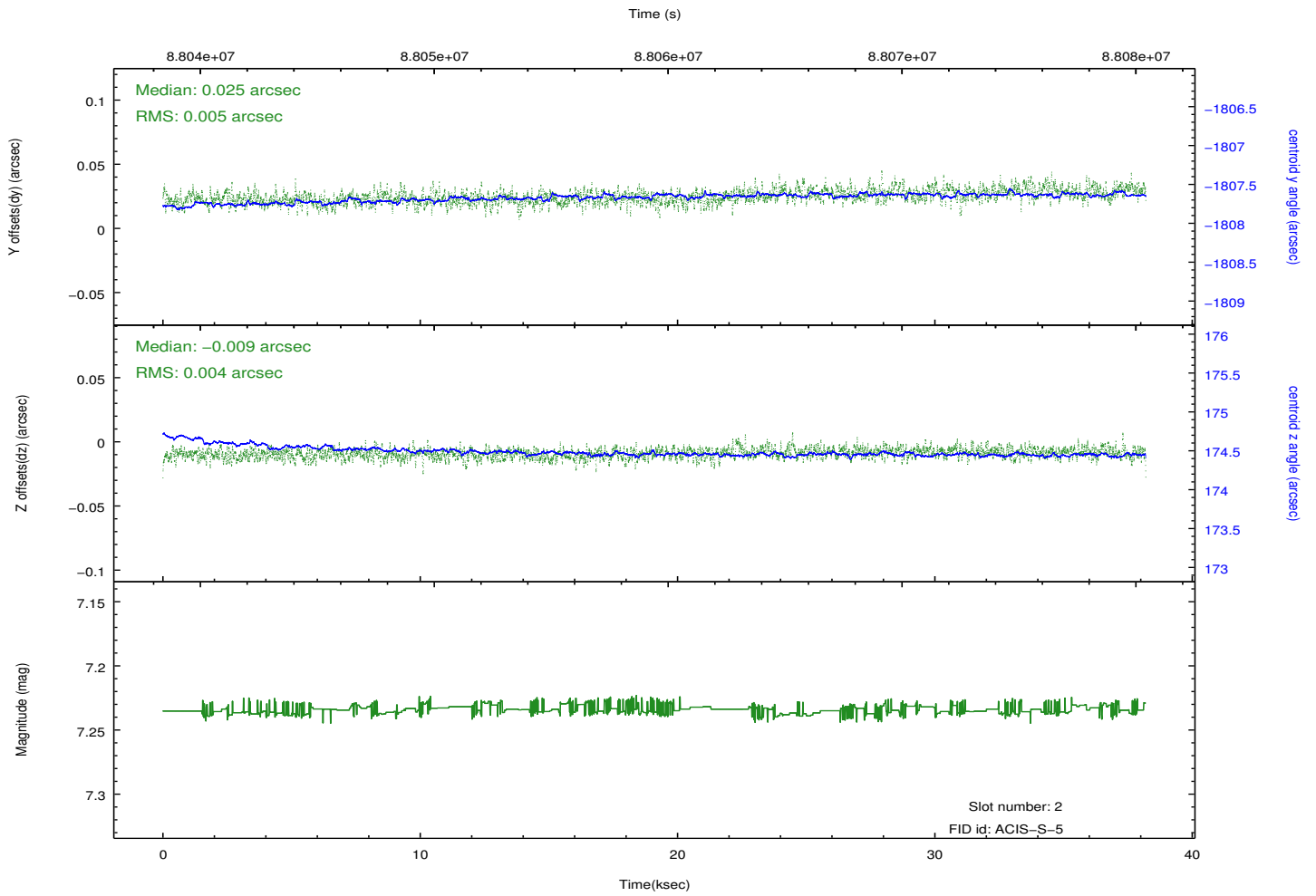
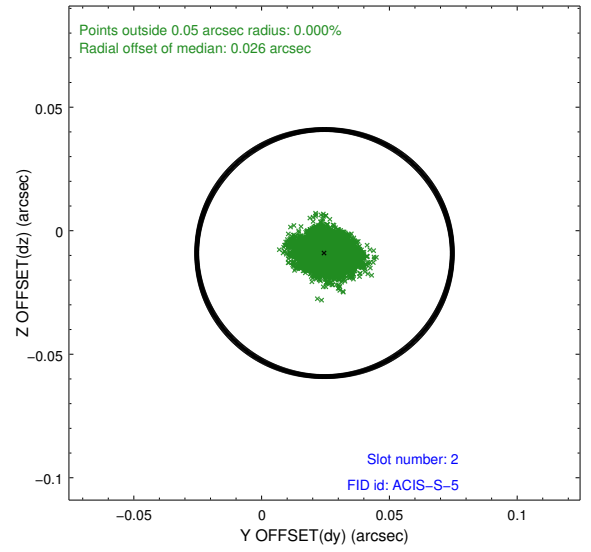
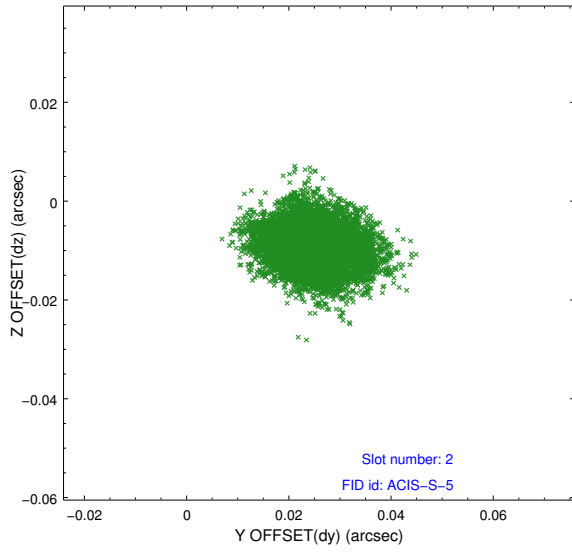
2.5.1 Slot 0



2.5.2 Slot 1



2.5.3 Slot 2



A Summary

A.1 Status

V&V Scientist	Beth Sundheim
V&V Date (YYYY-MM-DD)	2012.09.21
V&V Edition	1
V&V Disposition and Status	OK
V&V Charge Time	37.756

A.2 Comments

The guide star in slot 4 was removed from the aspect solution due to poor data quality. The aspect solution is improved by the removal of this star from the solution.