

V&V Reference Report

L2 ASCDS Version : 8.4.4

Observation 7878 - L2 Version 2
Chandra X-Ray Center

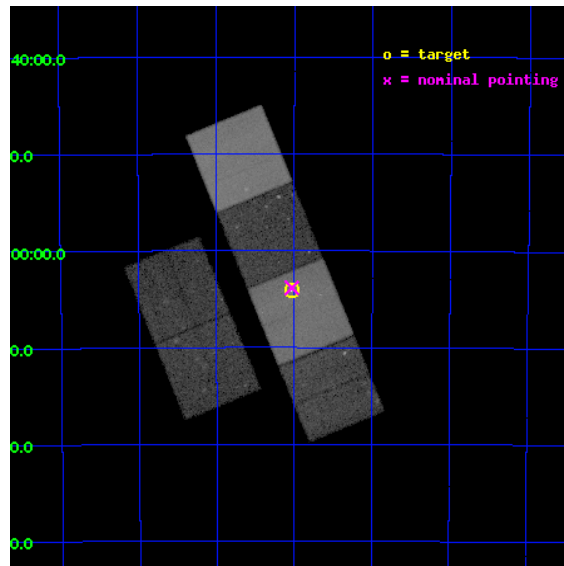
L2 Processing Date : Apr 26 2012

Contents

1	Front	2
2	OBI	3
2.1	OBI	3
2.1.1	Images	3
2.1.2	Bias	3
2.1.3	Parameters	4
2.1.4	Events	4
2.2	Compared Parameters	5
2.3	Aspect	6
2.4	Star Slots	9
2.4.1	Slot 3	9
2.4.2	Slot 4	10
2.4.3	Slot 5	11
2.4.4	Slot 6	12
2.4.5	Slot 7	13
2.5	FID Slots	14
2.5.1	Slot 0	14
2.5.2	Slot 1	15
2.5.3	Slot 2	16
A	Summary	17
A.1	Status	17
A.2	Comments	17

1 Front

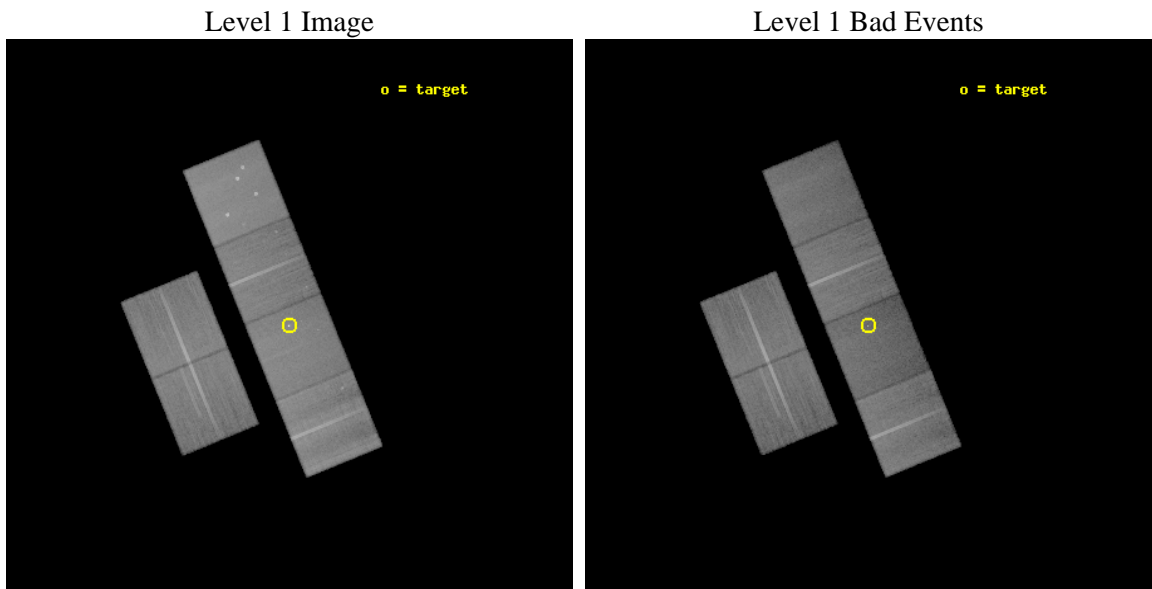
seq_num	701542	Sequence number
obs_id	7878	Observation id
title	The Circumnuclear X-Ray Environments of Highly Disturbed Seyfert Galaxies	Proposal title
observer	Dr Daniel Evans	Principal investigator
object	IC 5063	Source name
dtycycle	0	
cycle	P	events from which exps? Prim/Second/Both
ra_targ	313.009583	Observer's specified target RA [deg]
dec_targ	-57.068778	Observer's specified target Dec [deg]
ra_nom	313.00810718803	Nominal RA [deg]
dec_nom	-57.064003079185	Nominal Dec [deg]
roll_nom	67.765697228577	Nominal Roll [deg]
revision	2	Processing version of data
ontime	34540.799871385	Sum of GTIs [s]
livetime	34103.423465441	Livetime [s]
ontime2	34537.558861196	Sum of GTIs [s]
ontime3	34534.317880809	Sum of GTIs [s]
ontime5	34540.799871385	Sum of GTIs [s]
ontime6	34537.558940649	Sum of GTIs [s]
ontime7	34540.799871385	Sum of GTIs [s]
ontime8	34537.558861196	Sum of GTIs [s]
l2events	416970	Number of level 2 events



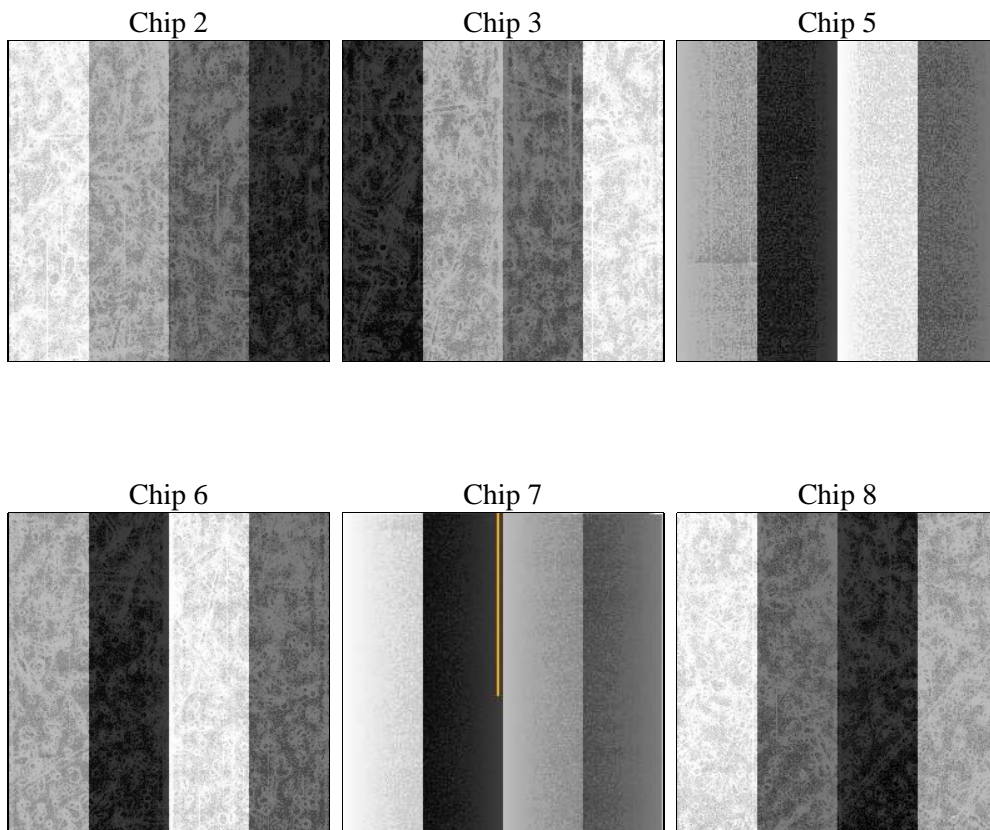
2 OBI

2.1 OBI

2.1.1 Images



2.1.2 Bias



2.1.3 Parameters

obi_num	1	Obi number	sched_exp_time	34500.000000	[s] Scheduled observation exposure time
ascdsver	8.4.4	Processing system revision	ontime	34540.799871385	Sum of GTIs [s]
caldbver	4.4.9	 	ontime2	34537.558861196	Sum of GTIs [s]
date	2012-04-26T13:15:36	Date and time of file creation	ontime3	34534.317880809	Sum of GTIs [s]
revision	2	Processing version of data	ontime5	34540.799871385	Sum of GTIs [s]
			ontime6	34537.558940649	Sum of GTIs [s]
			ontime7	34540.799871385	Sum of GTIs [s]
			ontime8	34537.558861196	Sum of GTIs [s]
			l1events	1882153	Number of level 1 events

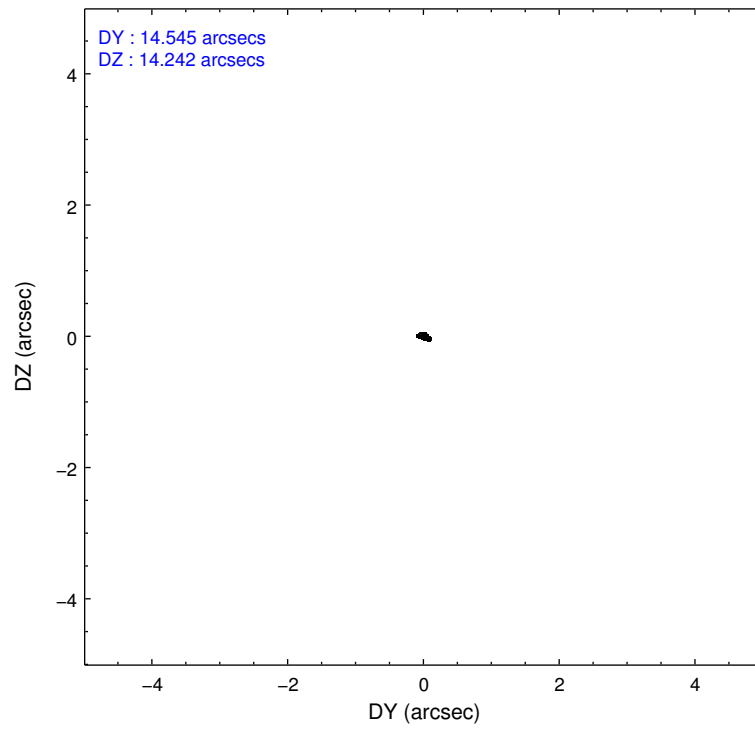
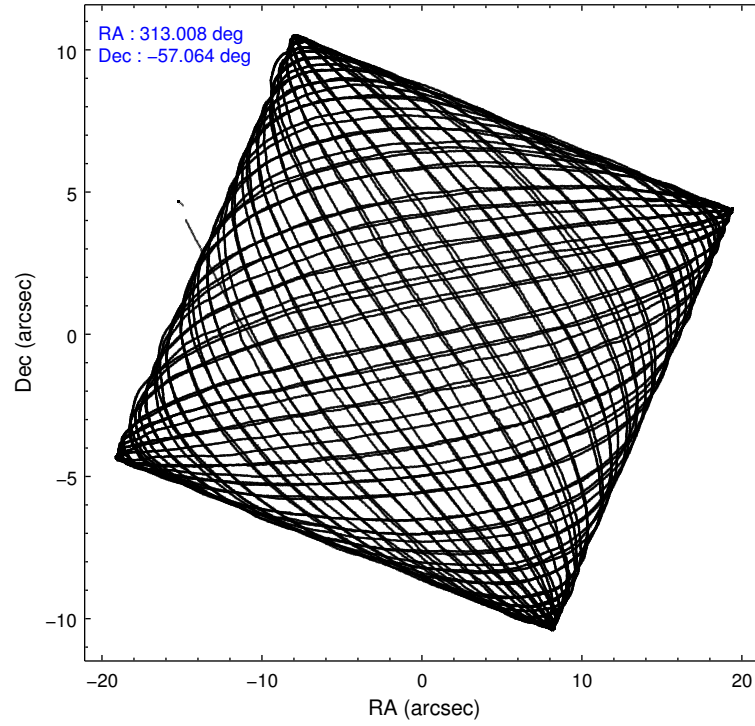
2.1.4 Events

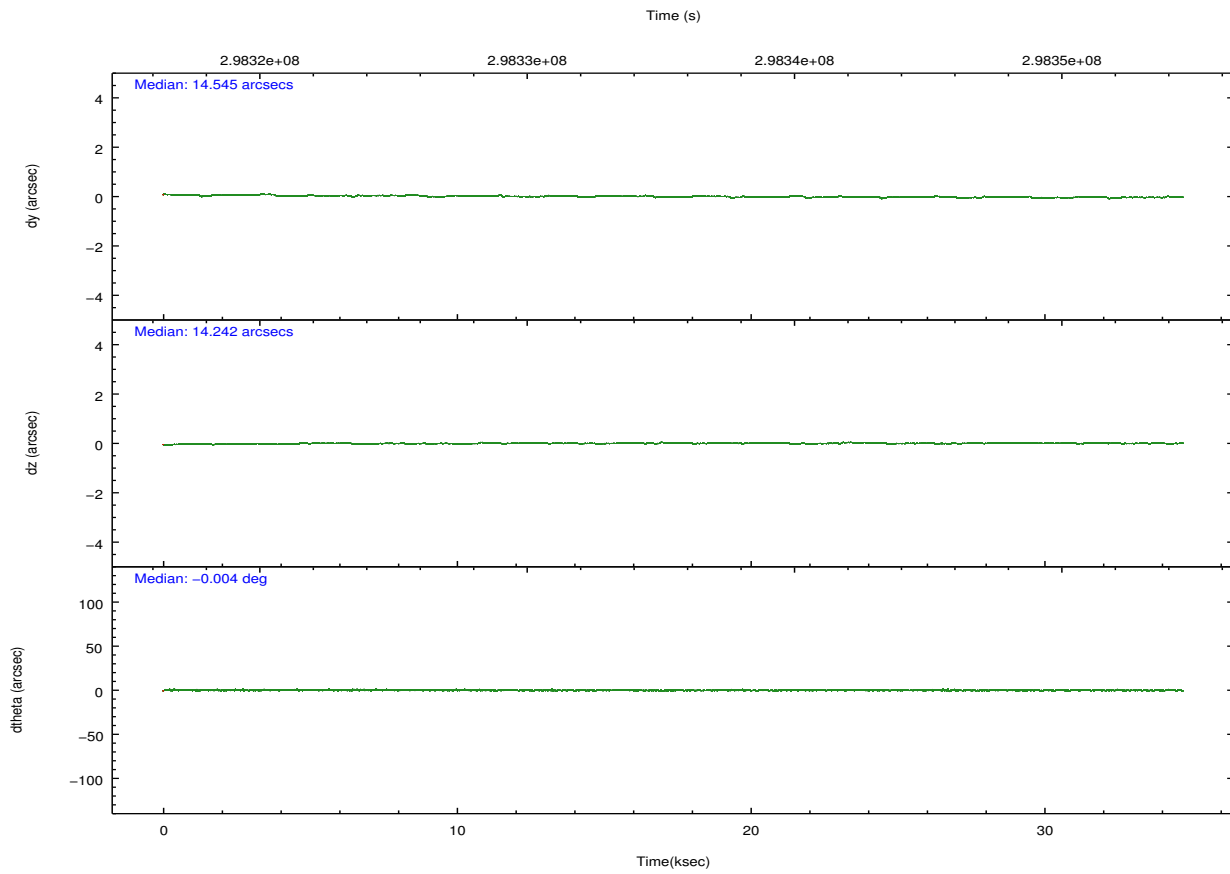
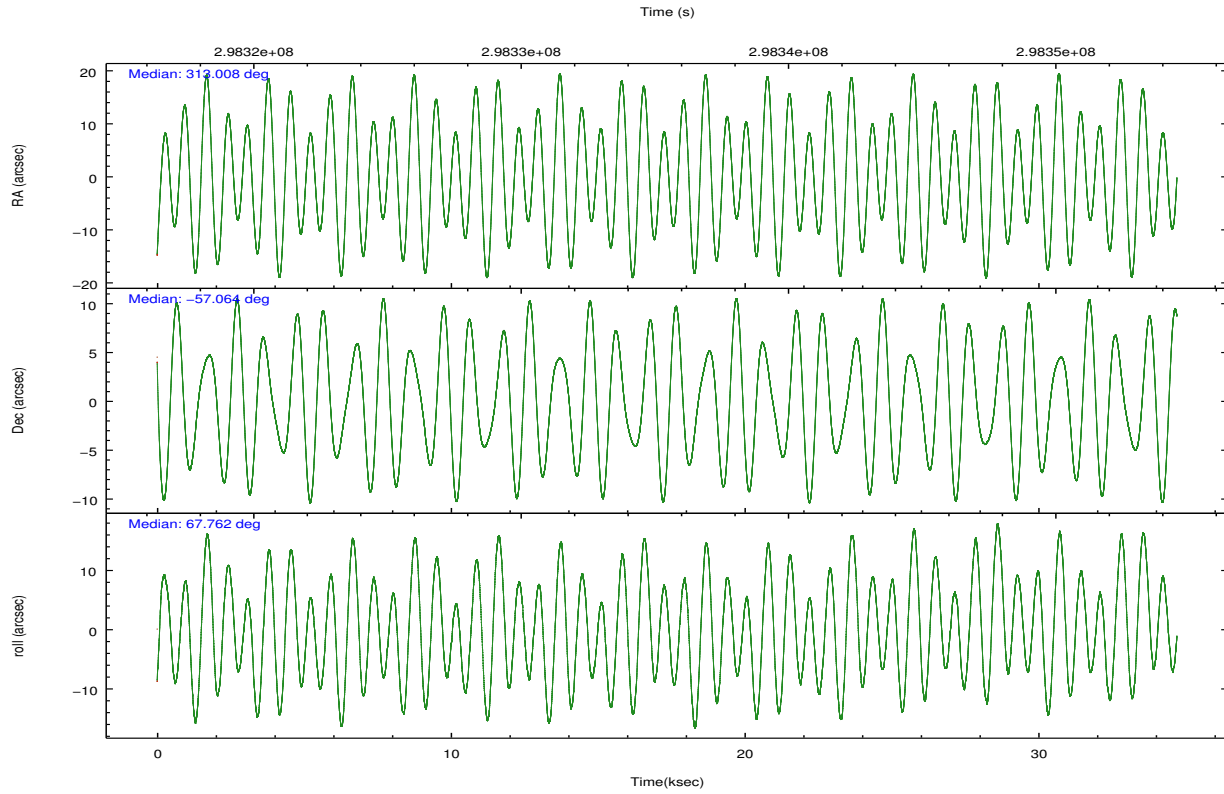
	ccd 2	ccd 3	ccd 5	ccd 6	ccd 7	ccd 8		ccd 2	ccd 3	ccd 5	ccd 6	ccd 7	ccd 8
level 1 events	295808	265521	378105	282027	312198	348494	grade 0 events	9593	9440	21828	10887	15096	25881
rejected events	269271	239903	188887	252594	165361	262275		3%	3%	5%	3%	4%	7%
rejected %	91%	90%	49%	89%	52%	75%	grade 1 events	170	168	645	144	443	299
								0%	0%	0%	0%	0%	0%
							grade 2 events	6369	5414	54723	6332	30034	19113
								2%	2%	14%	2%	9%	5%
							grade 3 events	2847	2893	7695	3086	13652	9433
								0%	1%	2%	1%	4%	2%
							grade 4 events	2916	2832	7169	3087	13482	8688
								0%	1%	1%	1%	4%	2%
							grade 5 events	9008	10869	29008	10937	32196	15601
								3%	4%	7%	3%	10%	4%
							grade 6 events	4815	5042	97821	6043	74585	23107
								1%	1%	25%	2%	23%	6%
							grade 7 events	260090	228863	159216	241511	132710	246372
								87%	86%	42%	85%	42%	70%

2.2 Compared Parameters

Parameter	Planned	Actual	Parameter	Planned	Actual
Instrument	ACIS	ACIS	Obspar format version number	7	7
Detector	ACIS-235678	ACIS-235678	Obspar file type	PREDICTED	ACTUAL
Grating	NONE	NONE	Obspar update status	NONE	UPDATED
Data mode	VFAINT	VFAINT	CCD I0 on	N	N
Observation mode	POINTING	POINTING	CCD I1 on	N	N
[deg] Pointing RA	313.015612	313.0081071880342	CCD I2 on	O1	Y
[deg] Pointing Dec	-57.091038	-57.0640030791854	CCD I3 on	O2	Y
[deg] Pointing Roll	67.615362	67.76569722857744	CCD S0 on	N	N
[mm] SIM focus pos	-0.684267	-0.6828225247311905	CCD S1 on	O3	Y
[mm] SIM defocus	0	0.001444936568705701	CCD S2 on	Y	Y
[mm] SIM translation stage pos	-190.132523	-190.1425803651734	CCD S3 on	Y	Y
[mm] SIM translation stage offset	0	0.01005778216563158	CCD S4 on	Y	Y
[s] Observation start time (MET)	298318310.184000	298317289.29925	CCD S5 on	N	N
Observation start date	2007-06-15T18:10:45	2007-06-15T17:54:49	Number of optional ACIS chips dropped	0	0
[s] Observation end time (MET)	298352810.184000	298353665.52599	On-chip summing requested	N	N
Observation end date	2007-06-16T03:45:45	2007-06-16T04:01:05	Subarray requested	NONE	NONE
Read mode	TIMED	TIMED	Alternating exposures requested	N	N
			[s] Primary exposure time	0.000000	3.2

2.3 Aspect



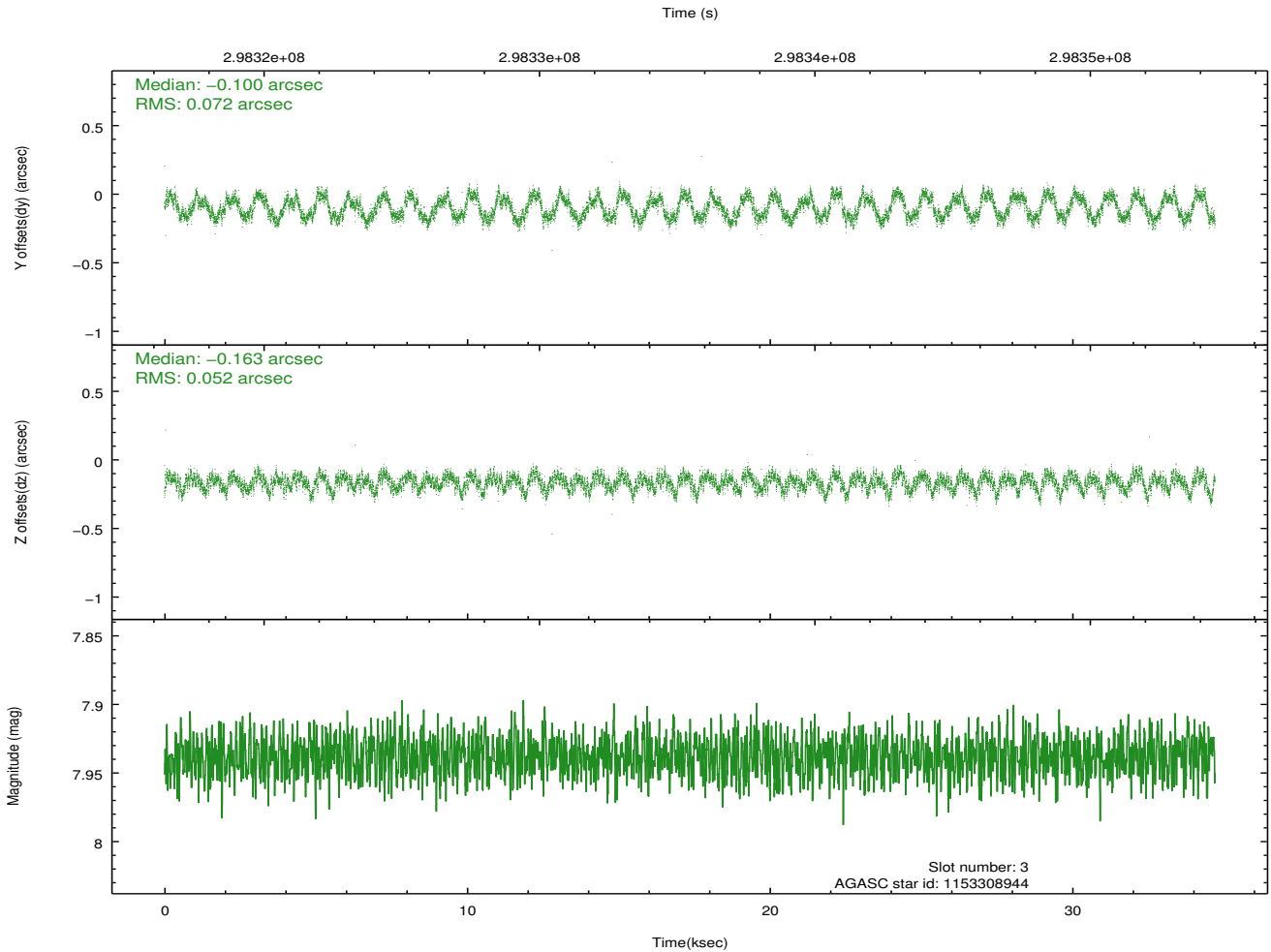
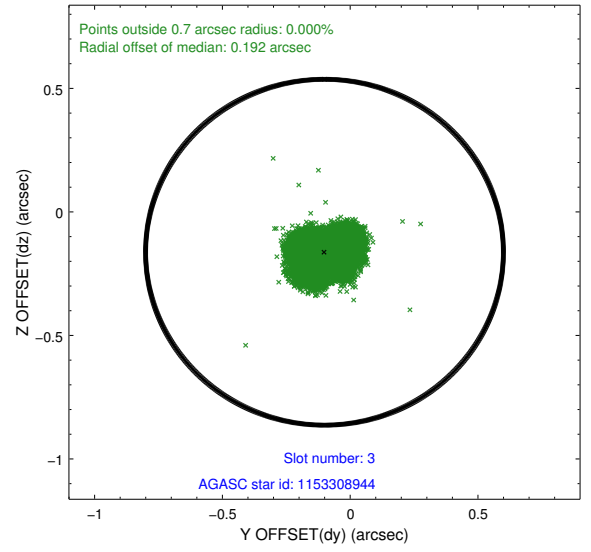
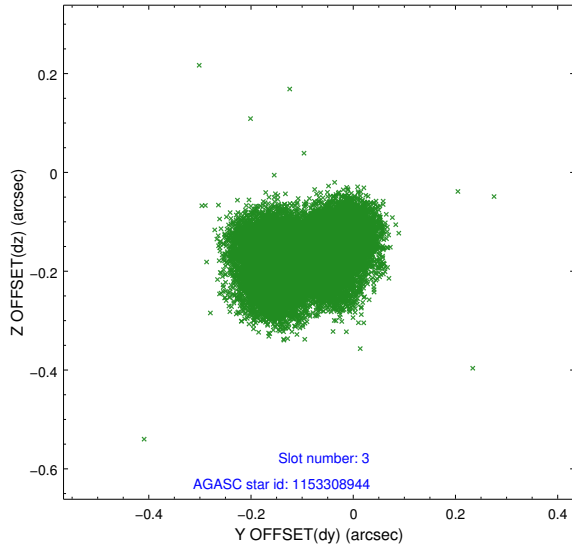


Slot Statistics

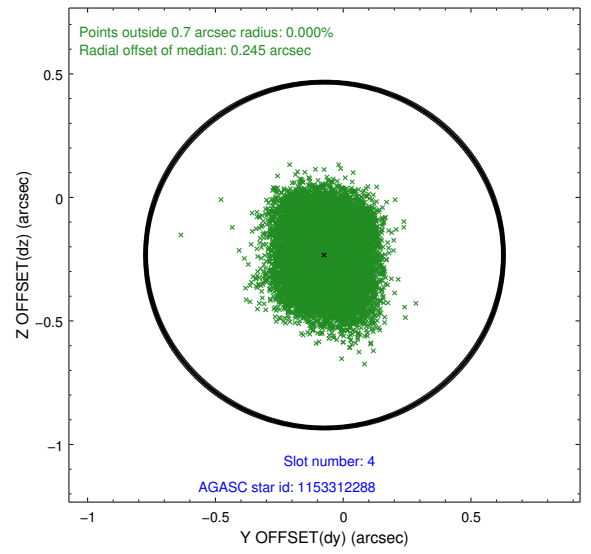
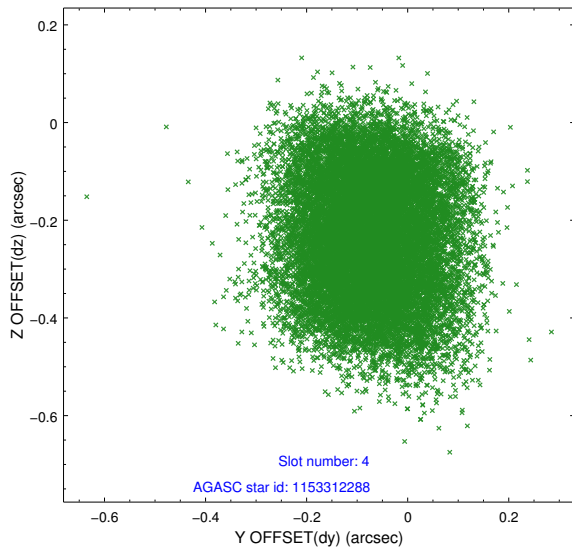
slot	status	id	mag	n_pts	med_dy	med_dz	dr1	dr2	ra	dec	mean_y	mean_z
0	FID	ACIS-S-2	7.09	8467	-0.086	-0.064	0.007	0.011	0.000000	0.000000	-767.59	-1735.61
1	FID	ACIS-S-4	7.19	8467	0.224	0.059	0.006	0.011	0.000000	0.000000	2145.98	172.95
2	FID	ACIS-S-5	7.22	8467	-0.169	0.014	0.006	0.011	0.000000	0.000000	-1820.46	166.63
3	GUIDE	1153308944	7.94	16915	-0.100	-0.163	0.098	0.140	313.182696	-56.719599	1362.01	203.90
4	GUIDE	1153312288	9.88	16915	-0.073	-0.233	0.165	0.252	312.395361	-56.576265	1240.20	1840.93
5	GUIDE	1153440136	8.24	16860	-0.169	0.160	0.061	0.100	314.021553	-57.000444	1039.59	-1704.55
6	GUIDE	1153442384	8.95	16909	0.008	0.116	0.133	0.201	314.026470	-56.702902	2039.64	-1320.59
7	GUIDE	1153442856	10.23	16902	0.357	0.144	0.333	0.485	313.337597	-57.833624	-2237.37	-1589.48

2.4 Star Slots

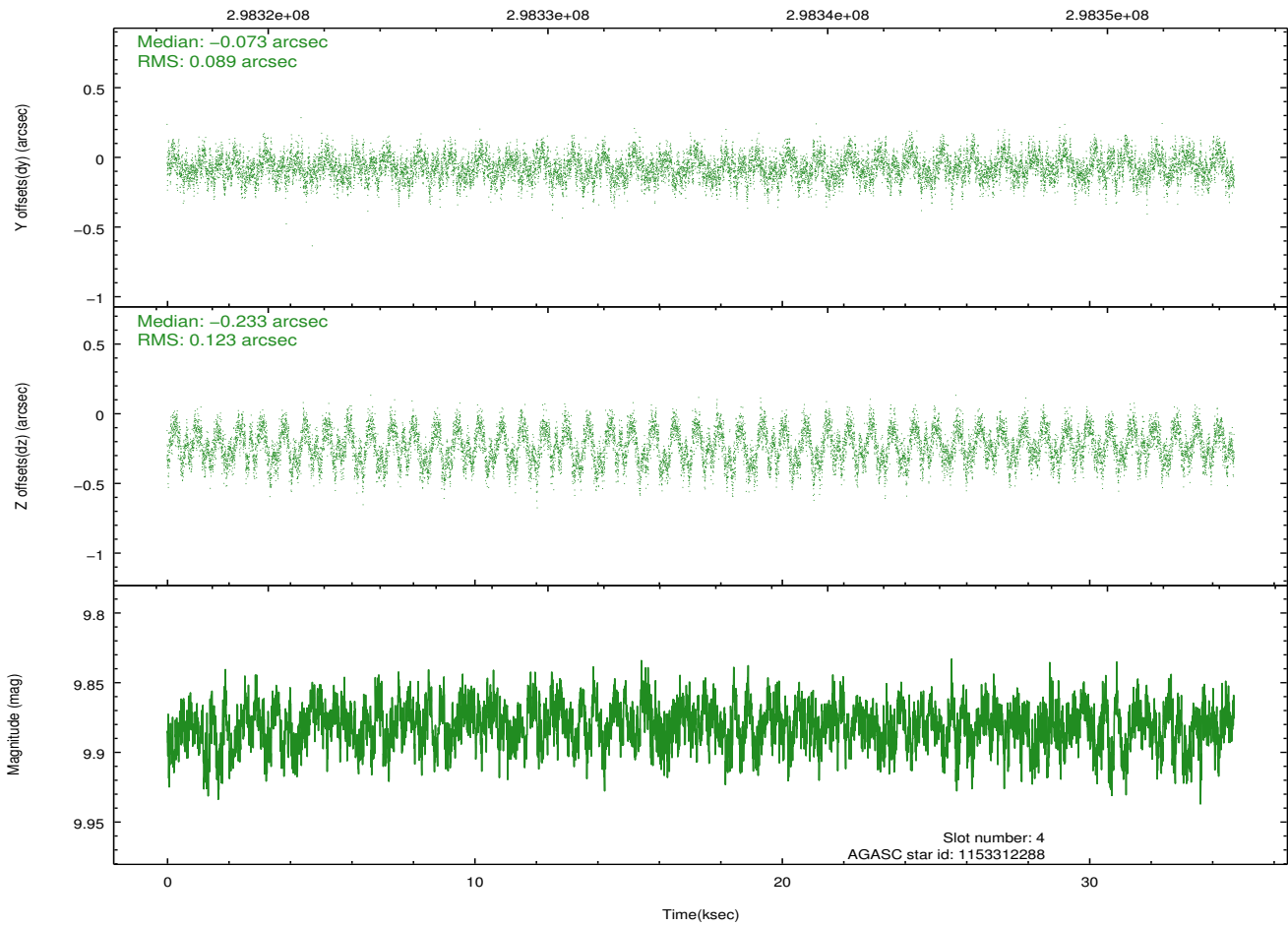
2.4.1 Slot 3



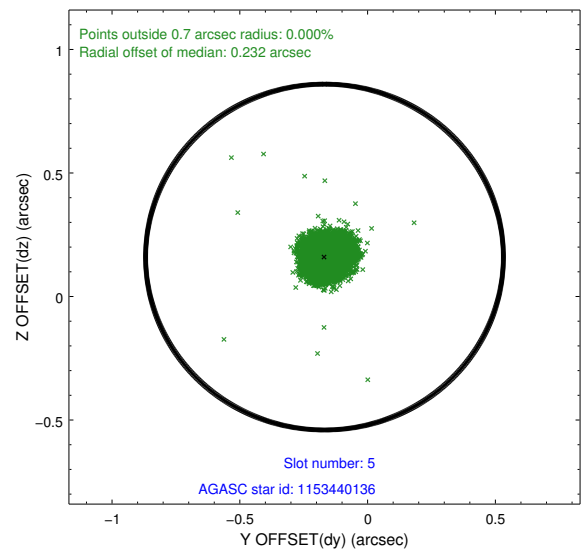
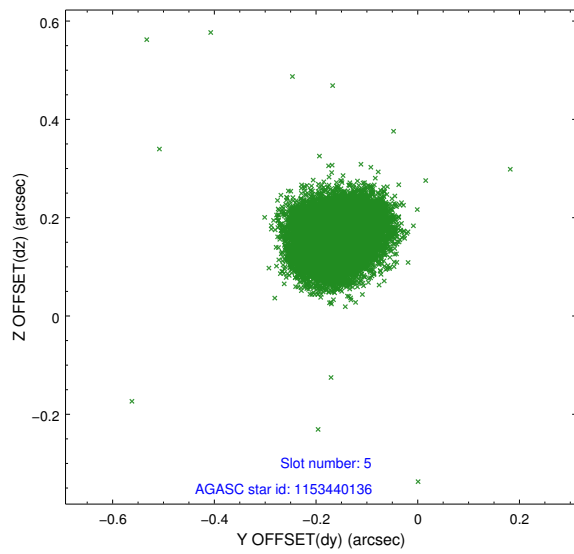
2.4.2 Slot 4



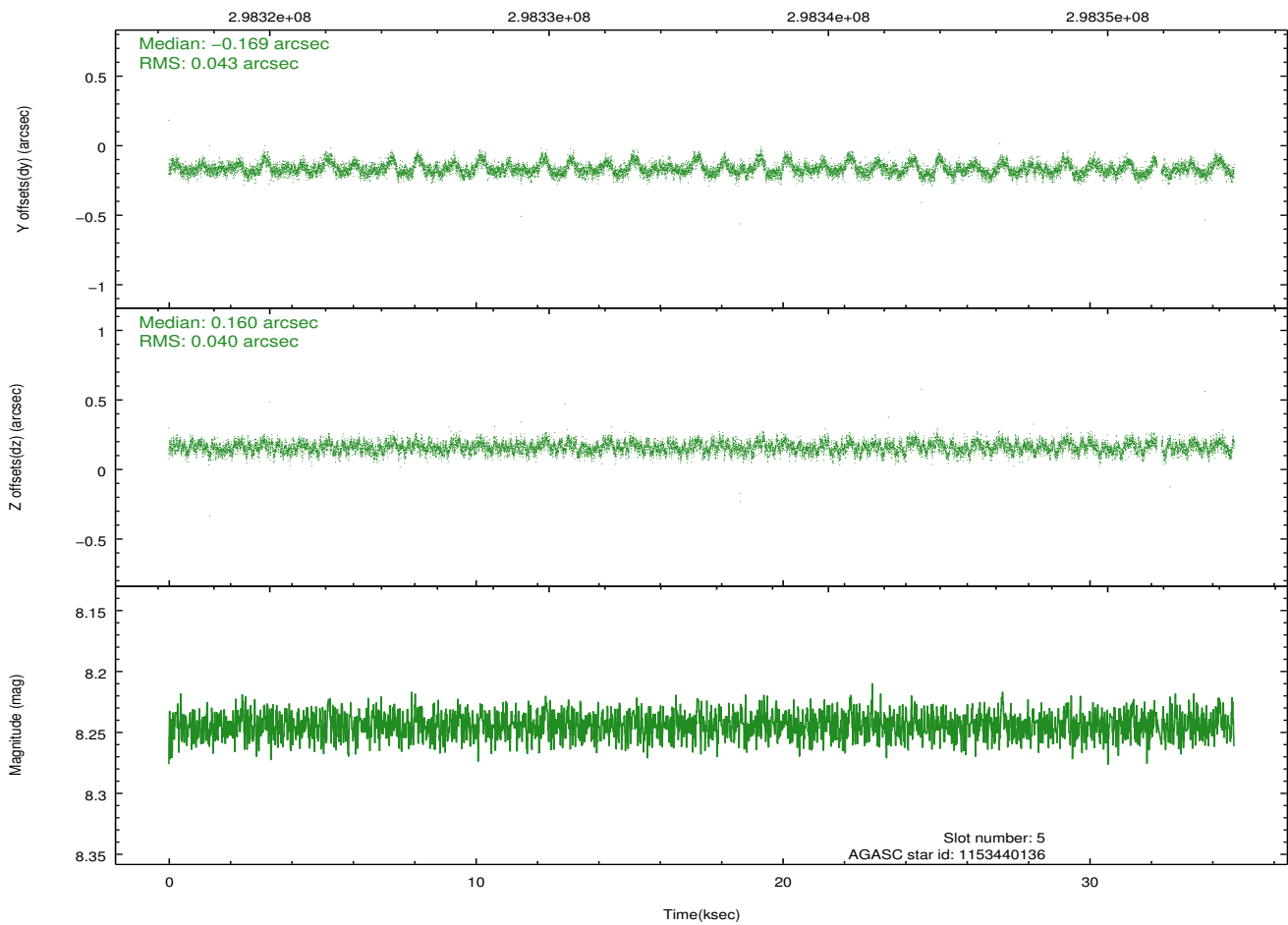
Time (s)



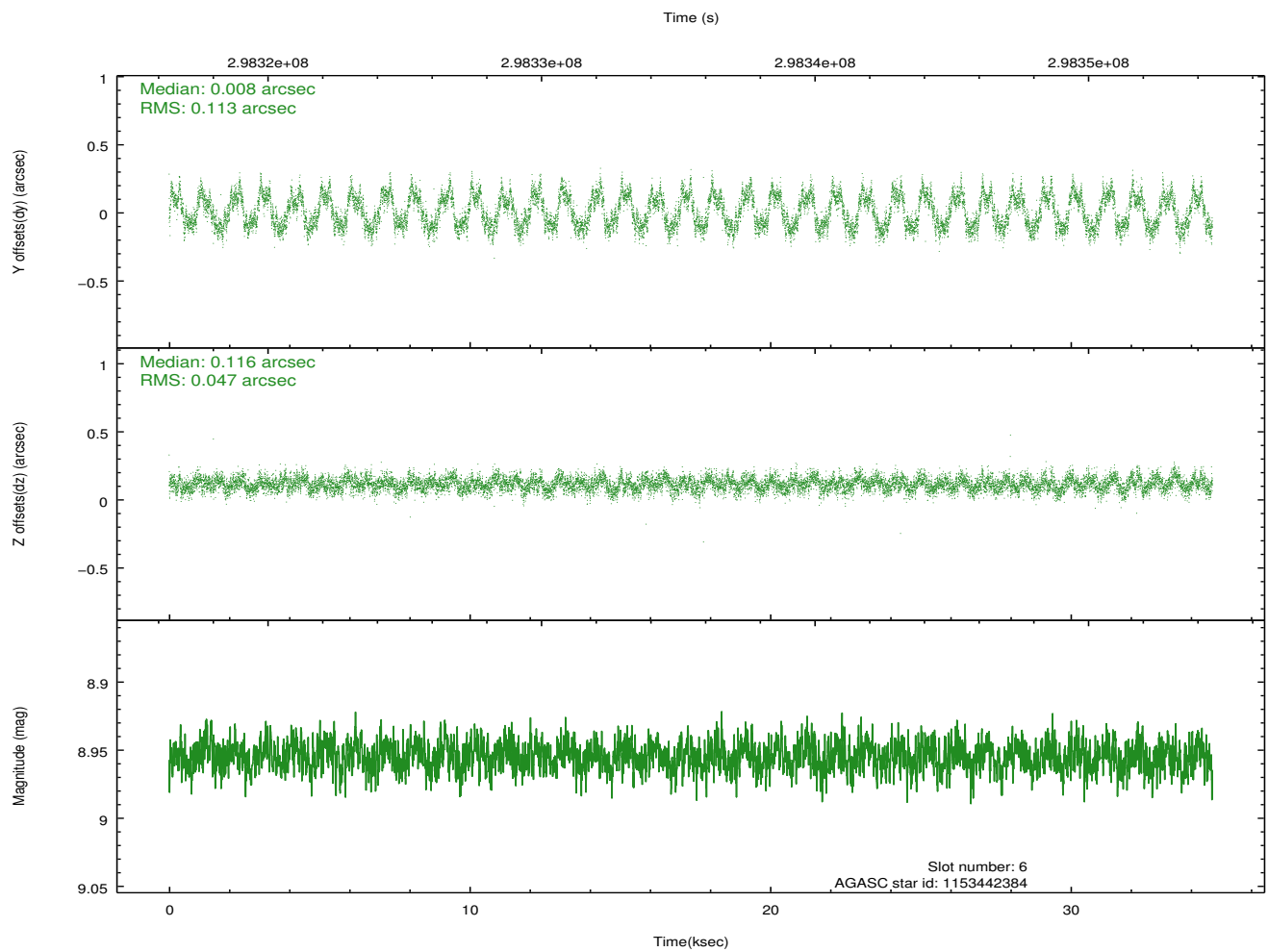
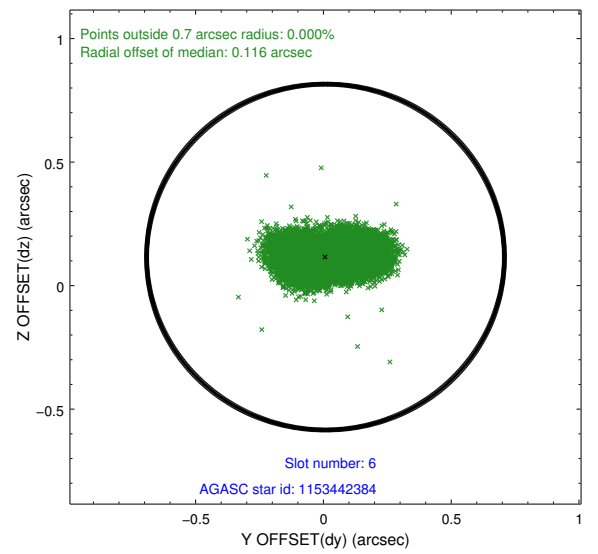
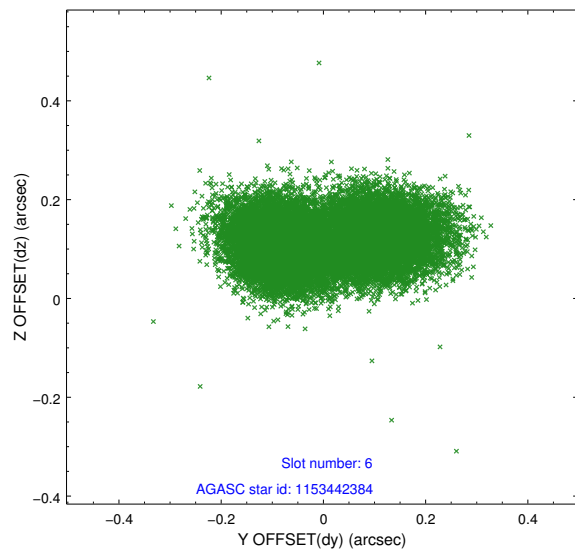
2.4.3 Slot 5



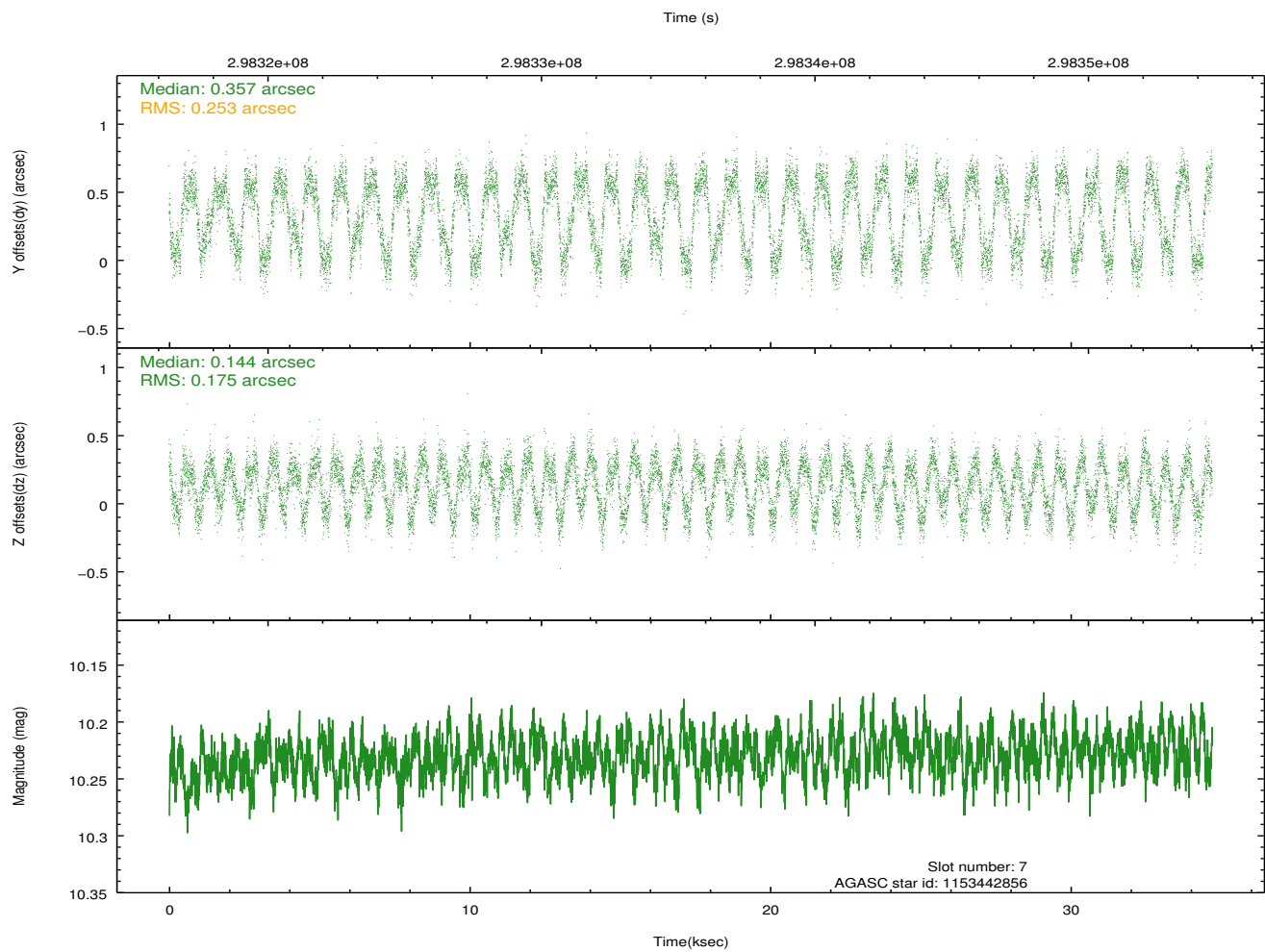
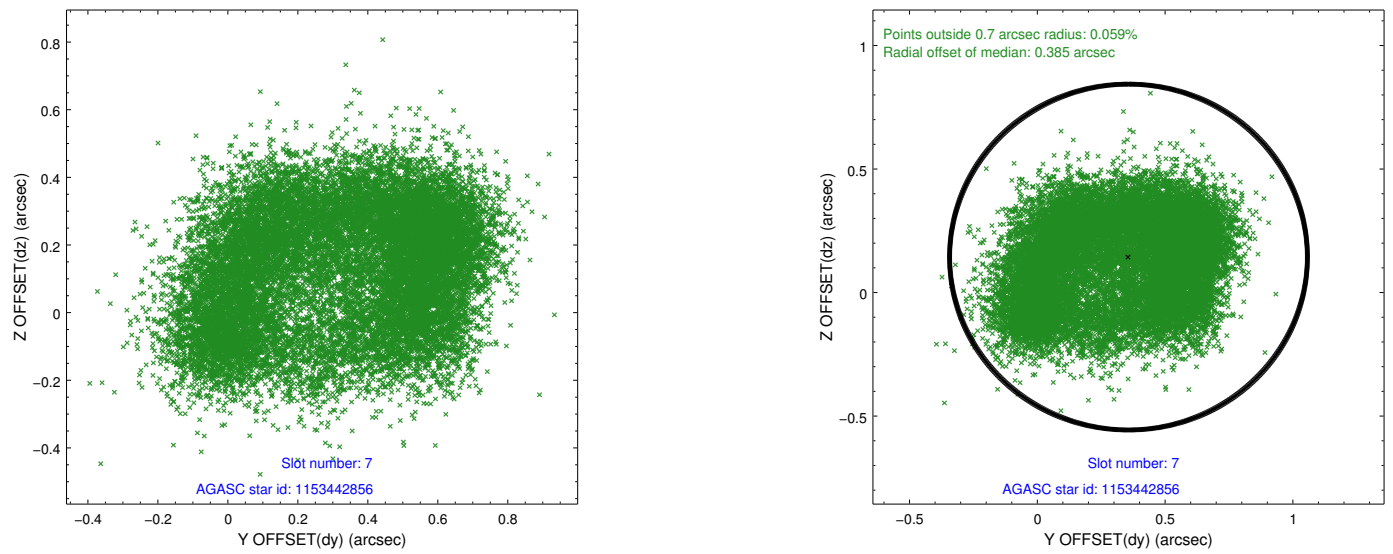
Time (s)



2.4.4 Slot 6

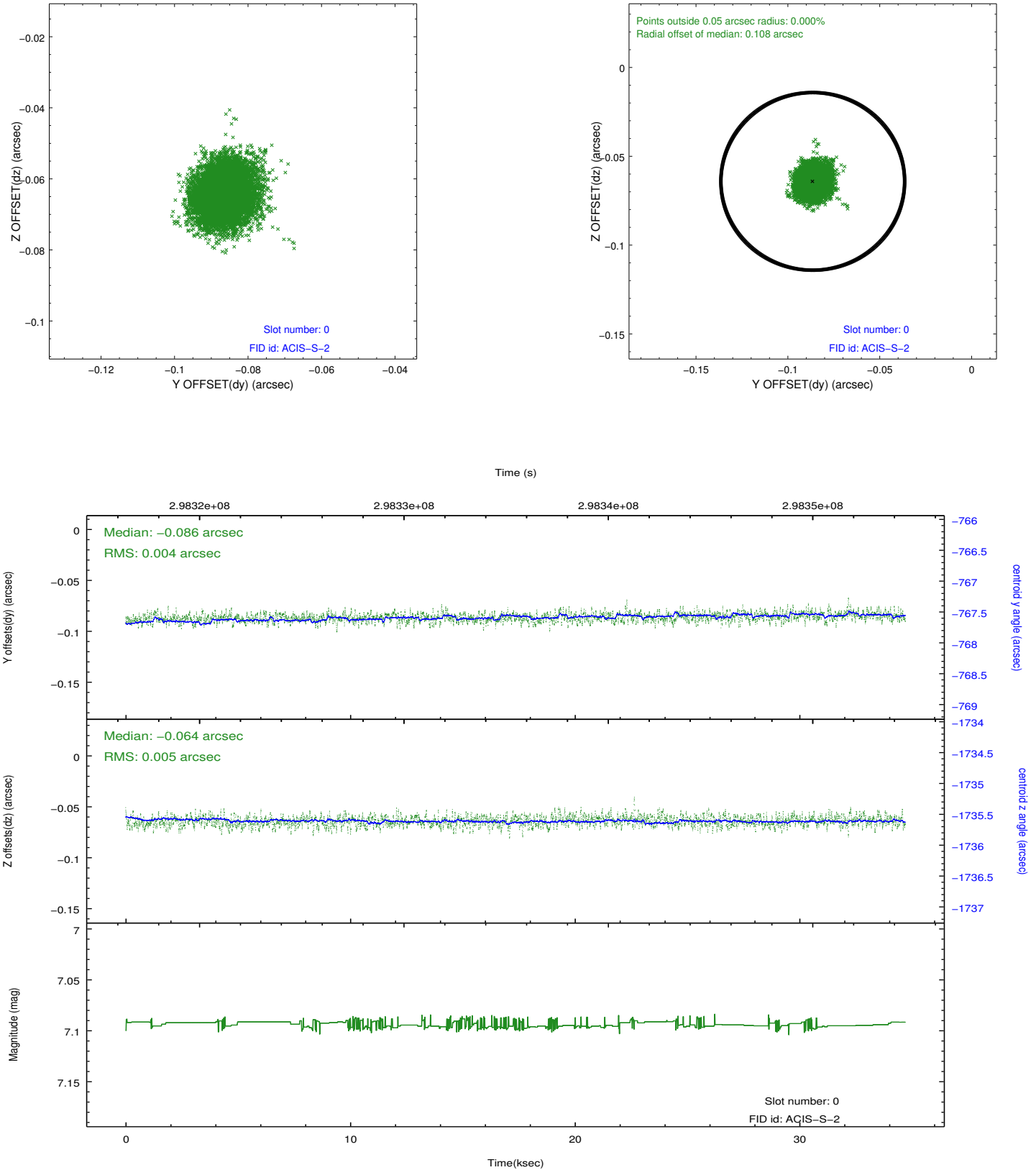


2.4.5 Slot 7

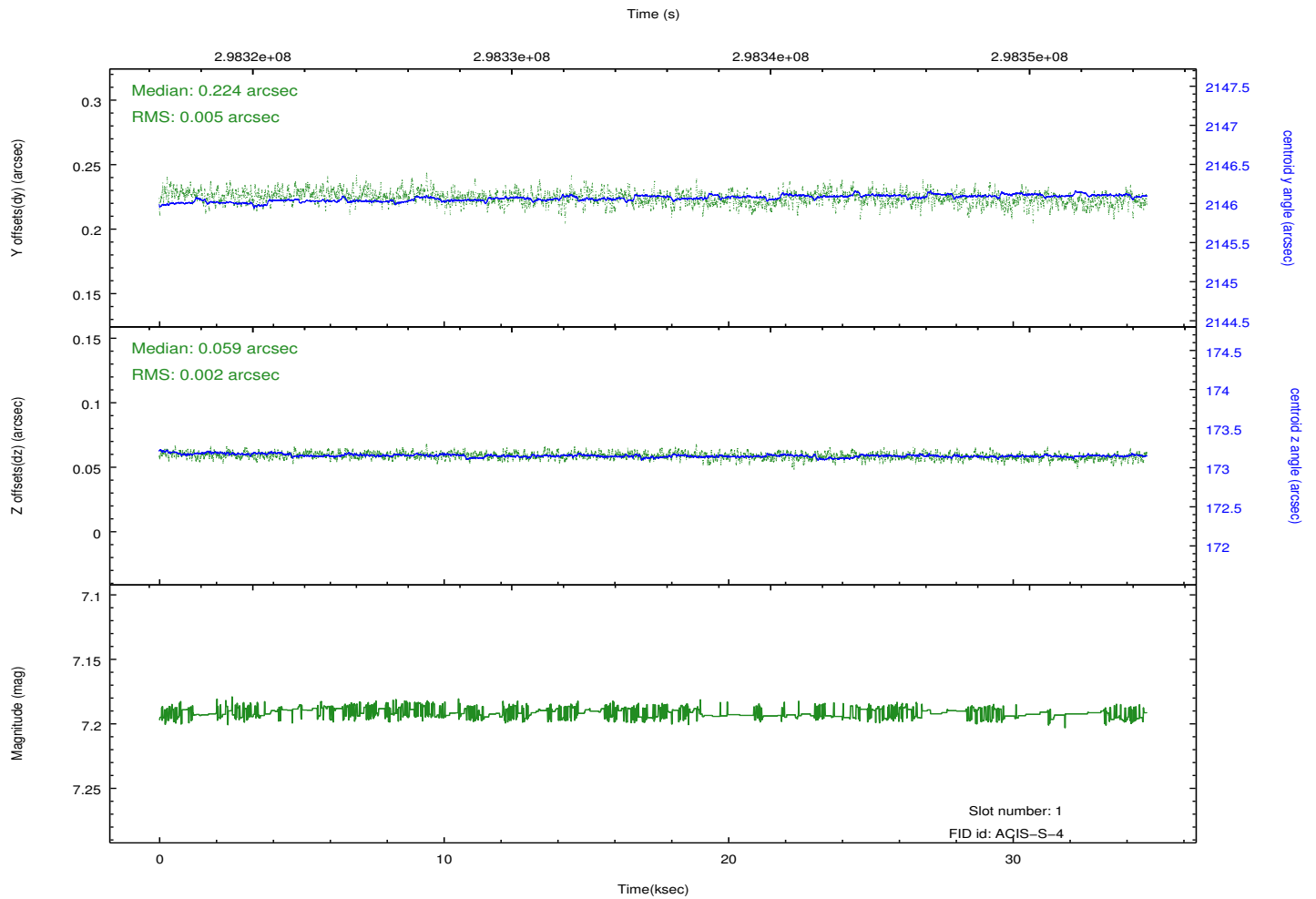
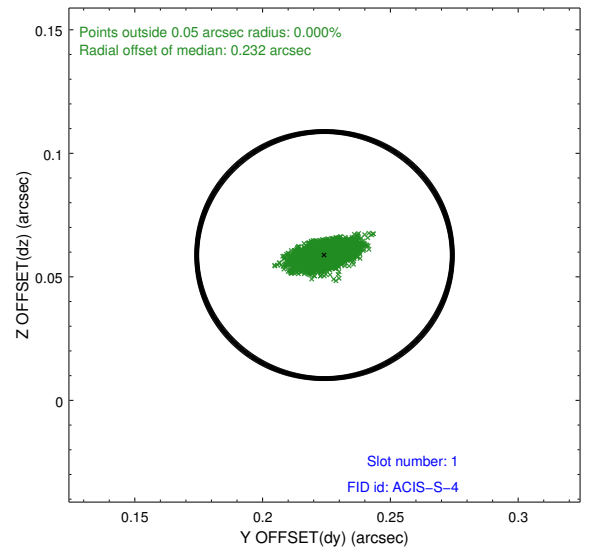
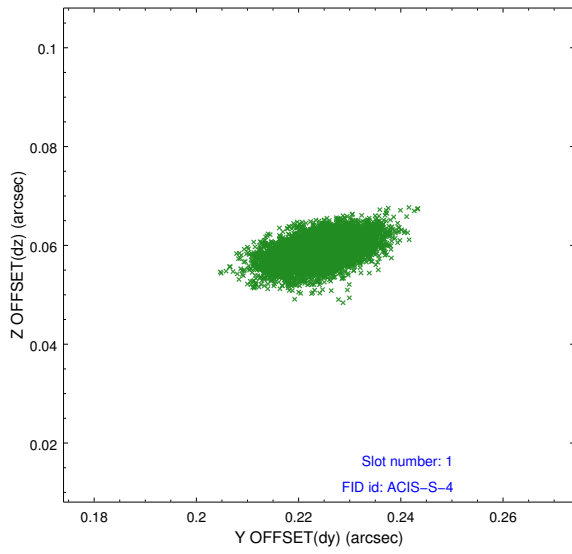


2.5 FID Slots

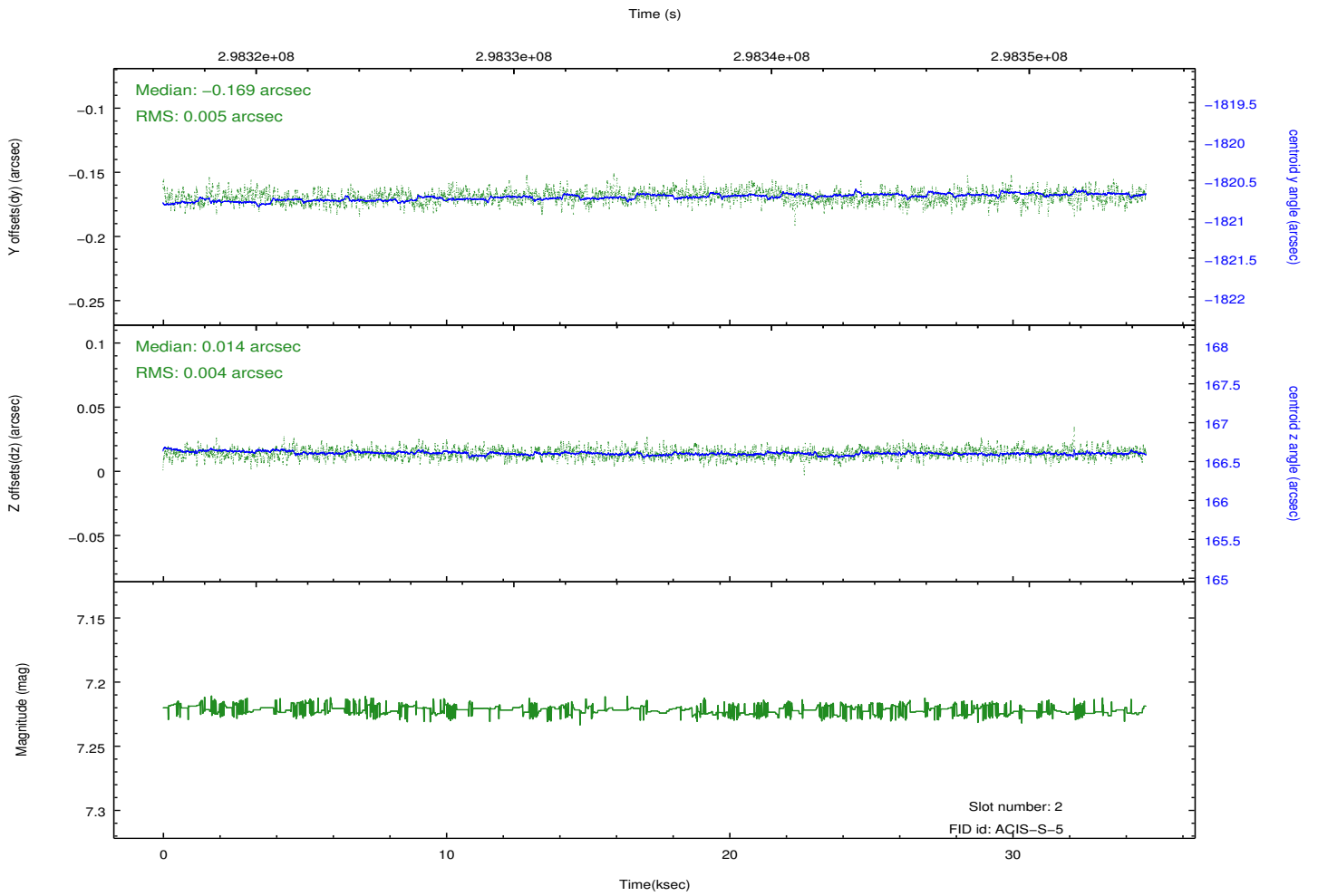
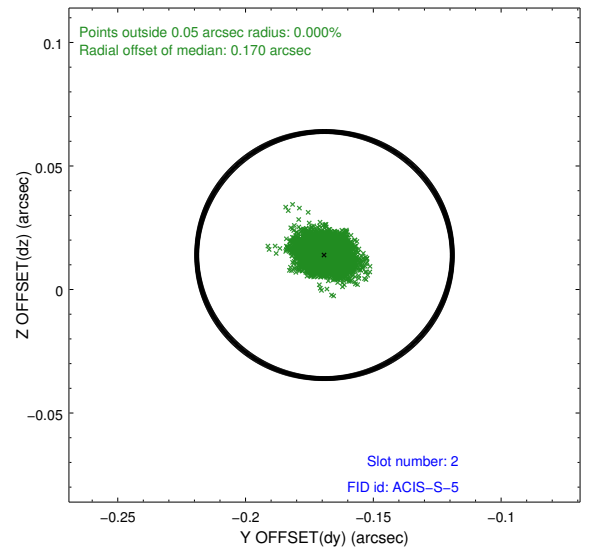
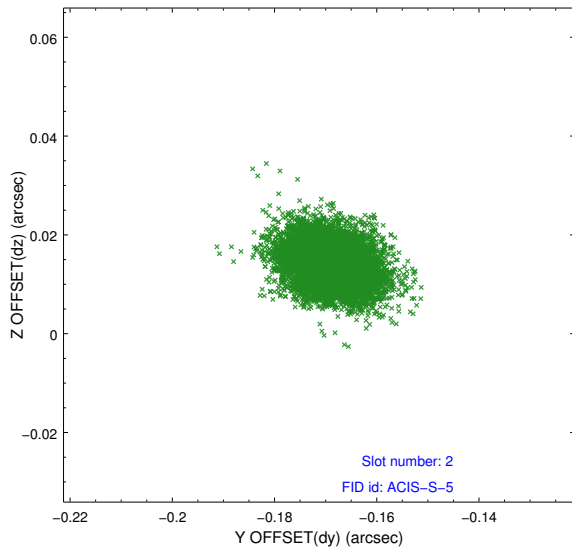
2.5.1 Slot 0



2.5.2 Slot 1



2.5.3 Slot 2



A Summary

A.1 Status

V&V Scientist	Jen Lauer
V&V Date (YYYY-MM-DD)	2012.04.27
V&V Edition	1
V&V Disposition and Status	OK
V&V Charge Time	34.5407998

A.2 Comments