

V&V Reference Report

L2 ASCDS Version : 8.4.4

Observation 7948 - L2 Version 3
Chandra X-Ray Center

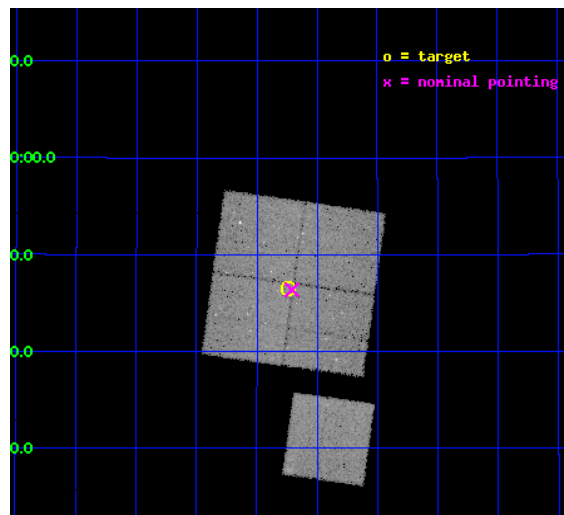
L2 Processing Date : Apr 24 2012

Contents

1	Front	2
2	OBI	3
2.1	OBI	3
2.1.1	Images	3
2.1.2	Bias	3
2.1.3	Parameters	4
2.1.4	Events	4
2.2	Compared Parameters	5
2.3	Aspect	6
2.4	Star Slots	9
2.4.1	Slot 3	9
2.4.2	Slot 4	10
2.4.3	Slot 5	11
2.4.4	Slot 6	12
2.4.5	Slot 7	13
2.5	FID Slots	14
2.5.1	Slot 0	14
2.5.2	Slot 1	15
2.5.3	Slot 2	16
A	Summary	17
A.1	Status	17
A.2	Comments	17

1 Front

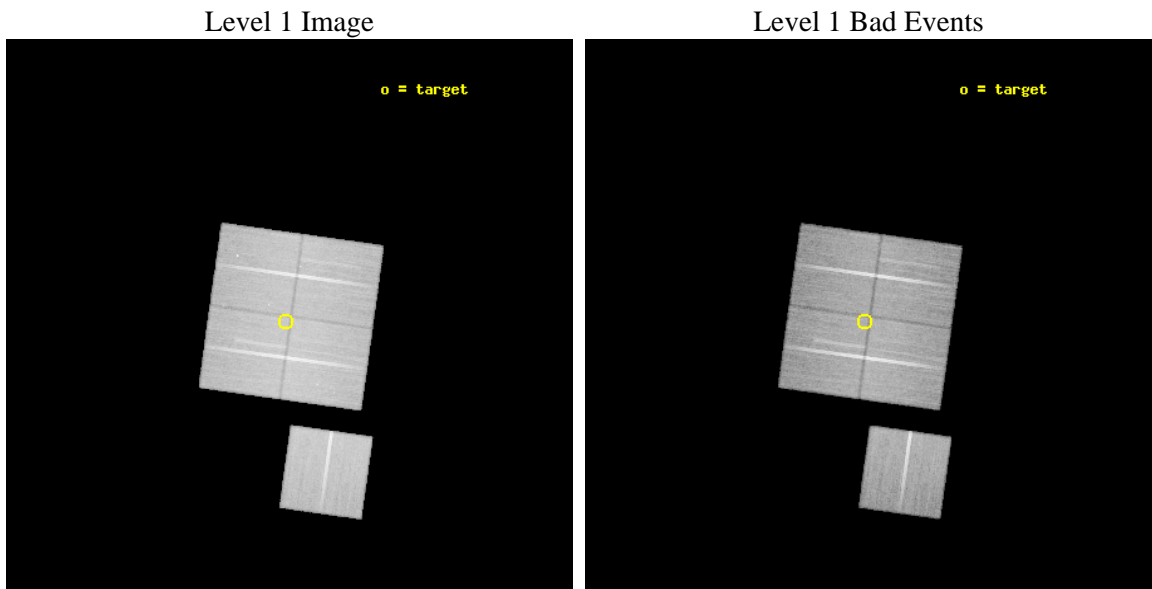
seq_num	900492	Sequence number
obs_id	7948	Observation id
title	Chandra Large Scale Survey of the NOAO Bootes Deep Field (A)	Propo
observer	Dr. Stephen Murray	Principal investigator
object	Bootes3 8	Source name
dtycycle	0	
cycle	P	events from which exps? Prim/Second/Both
ra_targ	216.81107	Observer's specified target RA [deg]
dec_targ	32.776433	Observer's specified target Dec [deg]
ra_nom	216.80238291562	Nominal RA [deg]
dec_nom	32.772981624118	Nominal Dec [deg]
roll_nom	187.98402566201	Nominal Roll [deg]
revision	3	Processing version of data
ontime	42760.886213064	Sum of GTIs [s]
livetime	42202.183754584	Livetime [s]
ontime0	42763.904113114	Sum of GTIs [s]
ontime1	42770.227093875	Sum of GTIs [s]
ontime2	42767.127163529	Sum of GTIs [s]
ontime3	42760.886213064	Sum of GTIs [s]
ontime6	42773.28601408	Sum of GTIs [s]
l2events	130322	Number of level 2 events



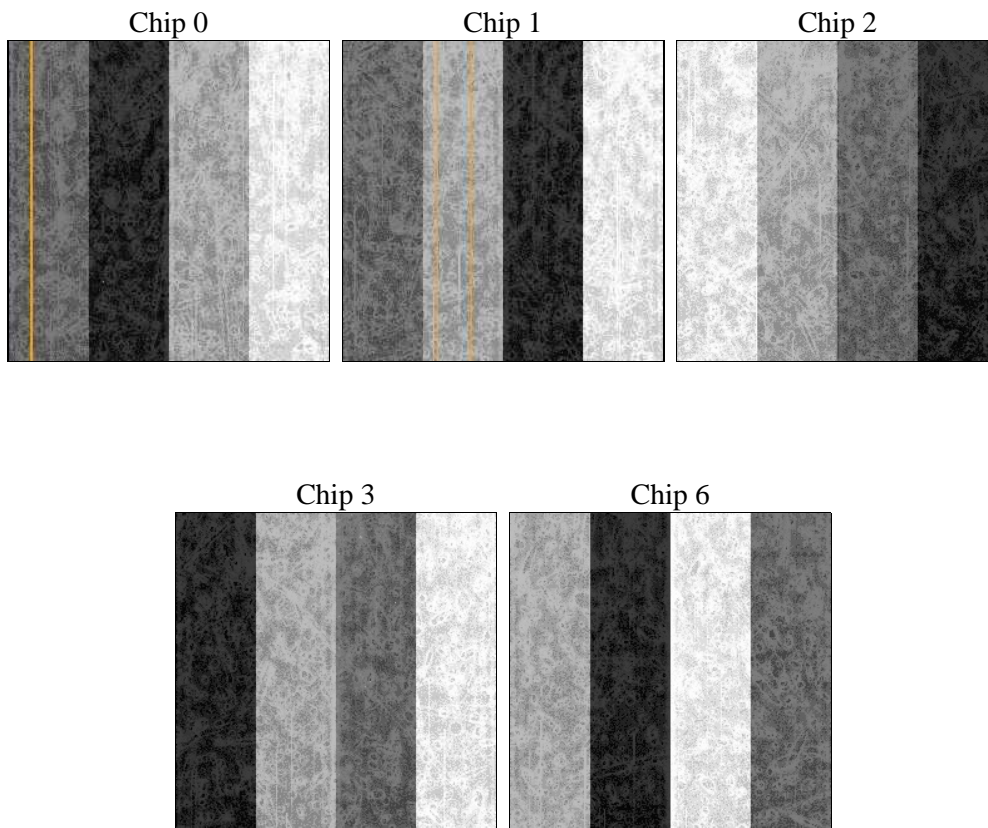
2 OBI

2.1 OBI

2.1.1 Images



2.1.2 Bias



2.1.3 Parameters

obi_num	1	Obi number	sched_exp_time	43000.000000	[s] Scheduled observation exposure time
ascdsver	8.4.4	Processing system revision	ontime	42760.886213064	Sum of GTIs [s]
caldsver	4.4.9	 	ontime0	42763.904113114	Sum of GTIs [s]
date	2012-04-24T09:46:55	Date and time of file creation	ontime1	42770.227093875	Sum of GTIs [s]
revision	3	Processing version of data	ontime2	42767.127163529	Sum of GTIs [s]
			ontime3	42760.886213064	Sum of GTIs [s]
			ontime6	42773.28601408	Sum of GTIs [s]
			l1events	1651420	Number of level 1 events

2.1.4 Events

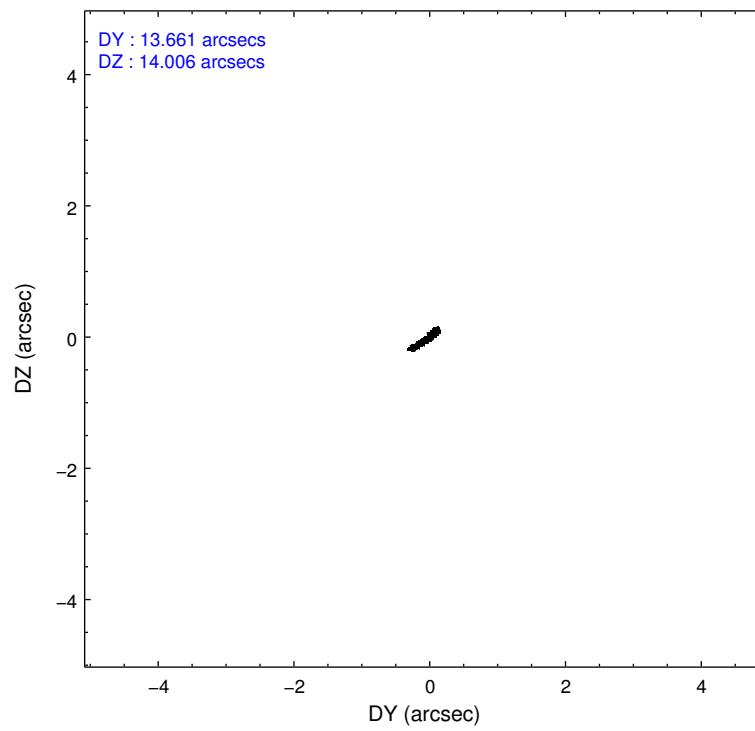
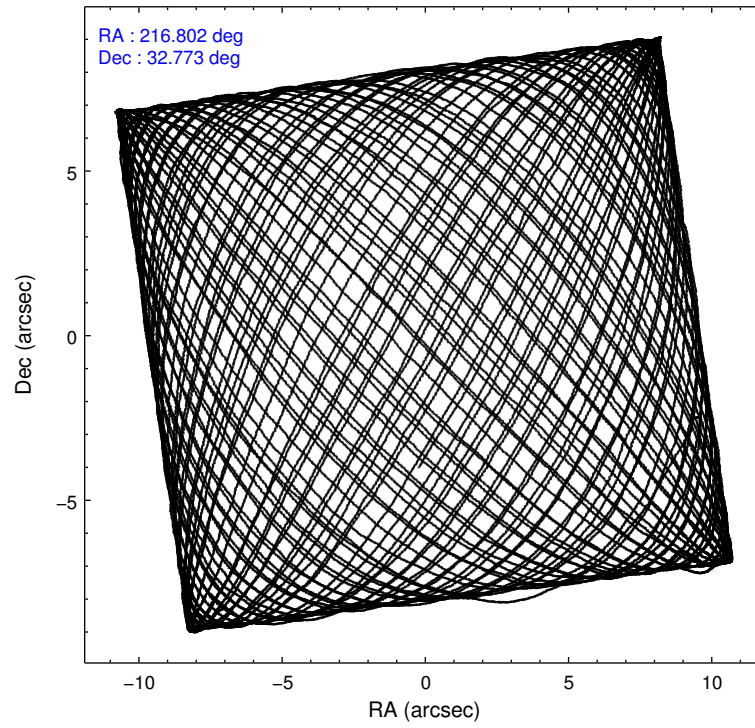
	ccd 0	ccd 1	ccd 2	ccd 3	ccd 6
level 1 events	319164	305762	365314	328821	332359
rejected events	287340	271552	333828	298670	300224
rejected %	90%	88%	91%	90%	90%

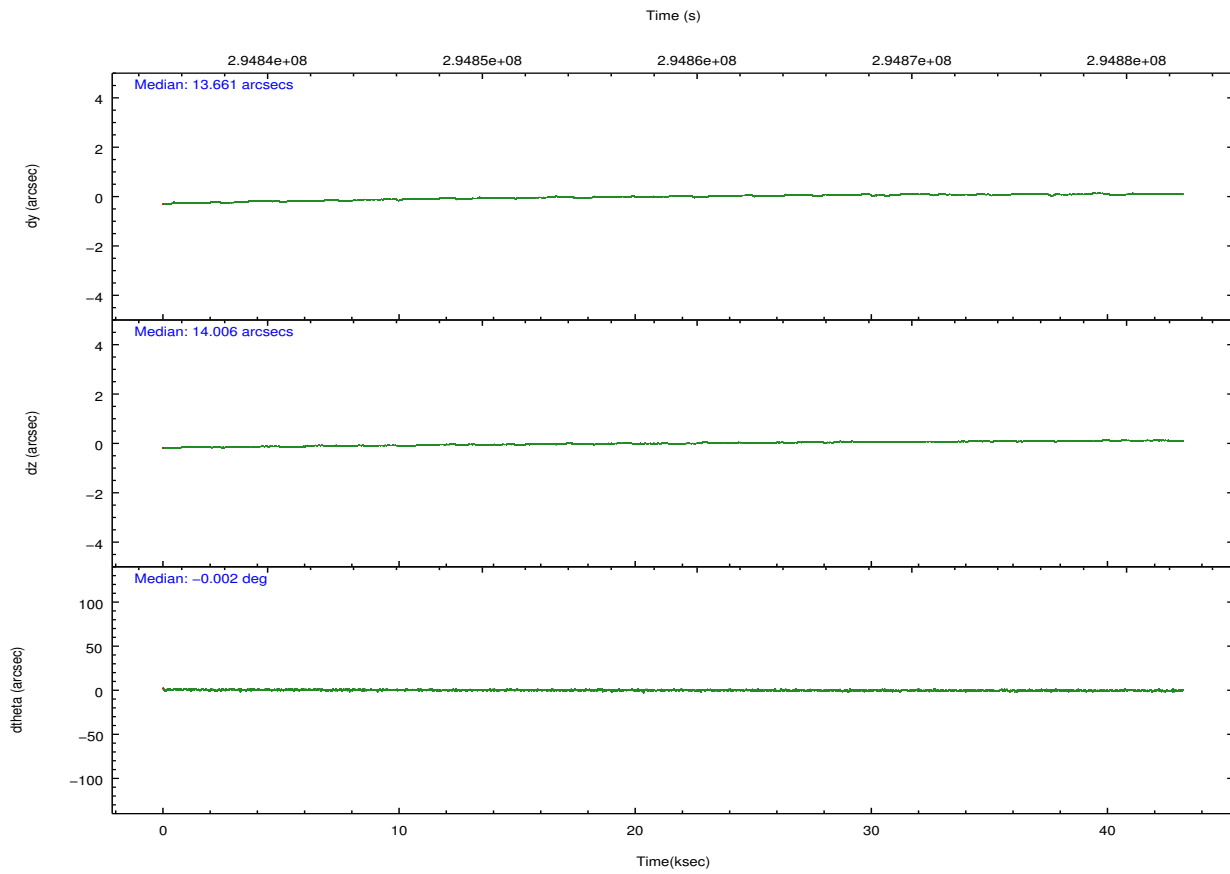
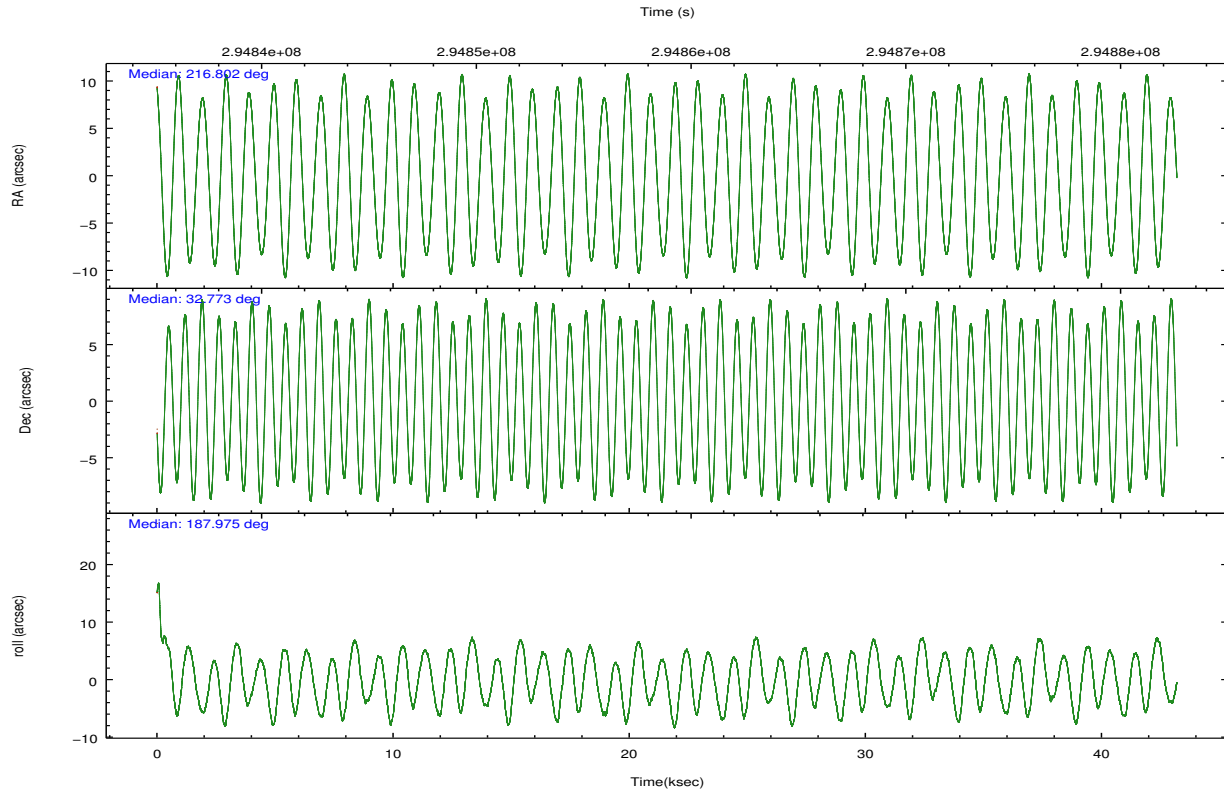
	ccd 0	ccd 1	ccd 2	ccd 3	ccd 6
grade 0 events	11309	12151	11767	10976	11449
	3%	3%	3%	3%	3%
grade 1 events	174	173	218	187	151
	0%	0%	0%	0%	0%
grade 2 events	7728	7572	7479	6597	7173
	2%	2%	2%	2%	2%
grade 3 events	3624	3970	3303	3475	3596
	1%	1%	0%	1%	1%
grade 4 events	3434	3854	3432	3432	3512
	1%	1%	0%	1%	1%
grade 5 events	9695	10688	8965	11279	10770
	3%	3%	2%	3%	3%
grade 6 events	5730	6666	5509	5674	6409
	1%	2%	1%	1%	1%
grade 7 events	277470	260688	324641	287201	289299
	86%	85%	88%	87%	87%

2.2 Compared Parameters

Parameter	Planned	Actual	Parameter	Planned	Actual
Instrument	ACIS	ACIS	Obspar format version number	7	7
Detector	ACIS-01236	ACIS-01236	Obspar file type	PREDICTED	ACTUAL
Grating	NONE	NONE	Obspar update status	NONE	UPDATED
Data mode	VFAINT	VFAINT	Number of optional ACIS chips dropped	0	0
Observation mode	POINTING	POINTING	On-chip summing requested	N	N
[deg] Pointing RA	216.828080	216.8023829156234	Subarray requested	NONE	NONE
[deg] Pointing Dec	32.789989	32.77298162411839	Alternating exposures requested	N	N
[deg] Pointing Roll	187.761429	187.9840256620106	[s] Primary exposure time	0.000000	3.1
[mm] SIM focus pos	-0.782348	-0.7809083437167272			
[mm] SIM defocus	0	0.001439871863259334			
[mm] SIM translation stage pos	-233.592463	-233.5874344608287			
[mm] SIM translation stage offset	0	-0.005018542100998502			
[s] Observation start time (MET)	294837477.184000	294837046.15798			
Observation start date	2007-05-06T11:16:52	2007-05-06T11:10:46			
[s] Observation end time (MET)	294880477.184000	294881078.11008			
Observation end date	2007-05-06T23:13:32	2007-05-06T23:24:38			
Read mode	TIMED	TIMED			

2.3 Aspect



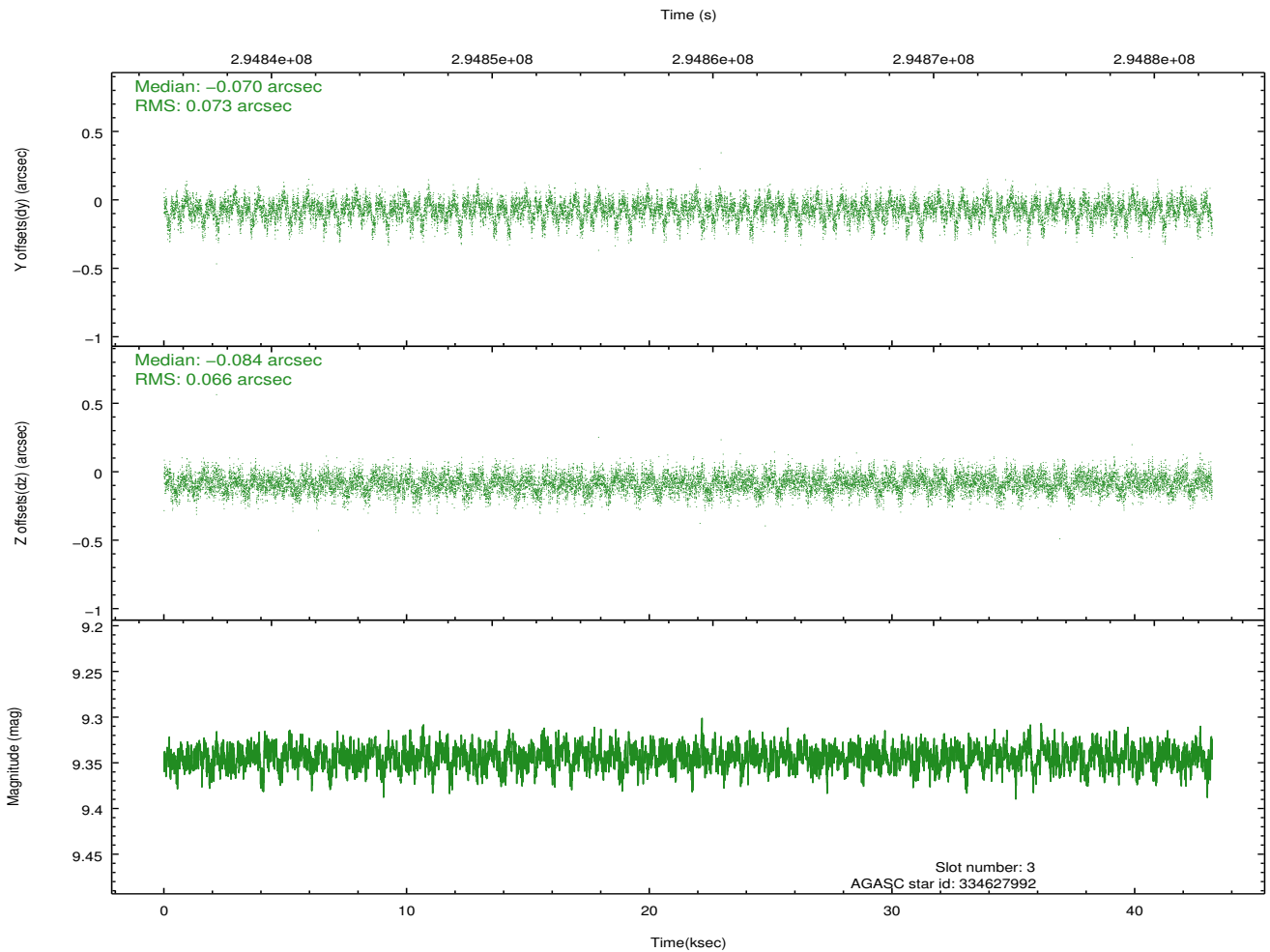
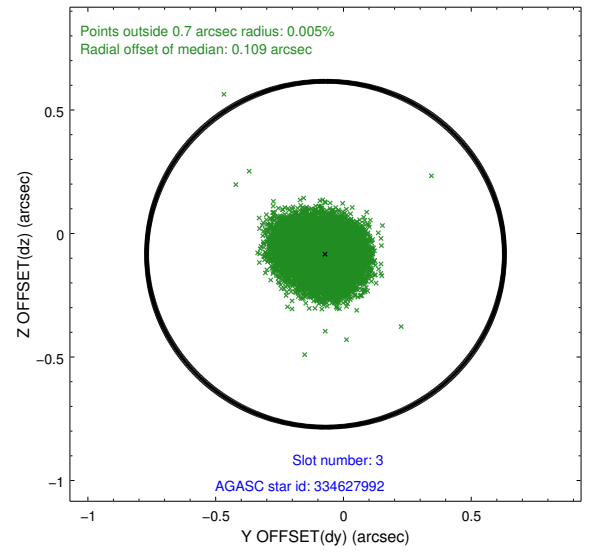
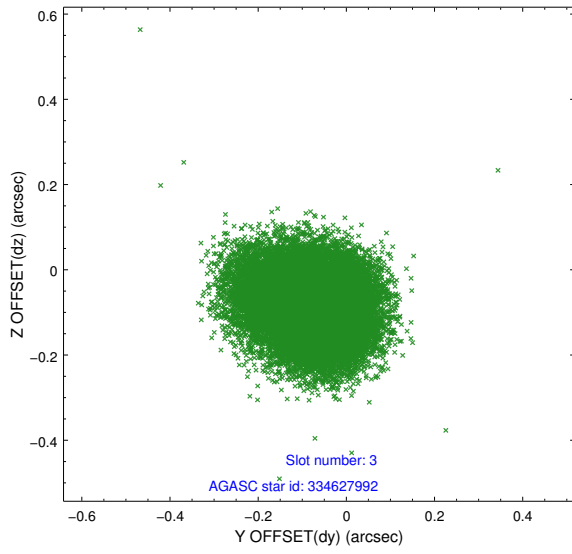


Slot Statistics

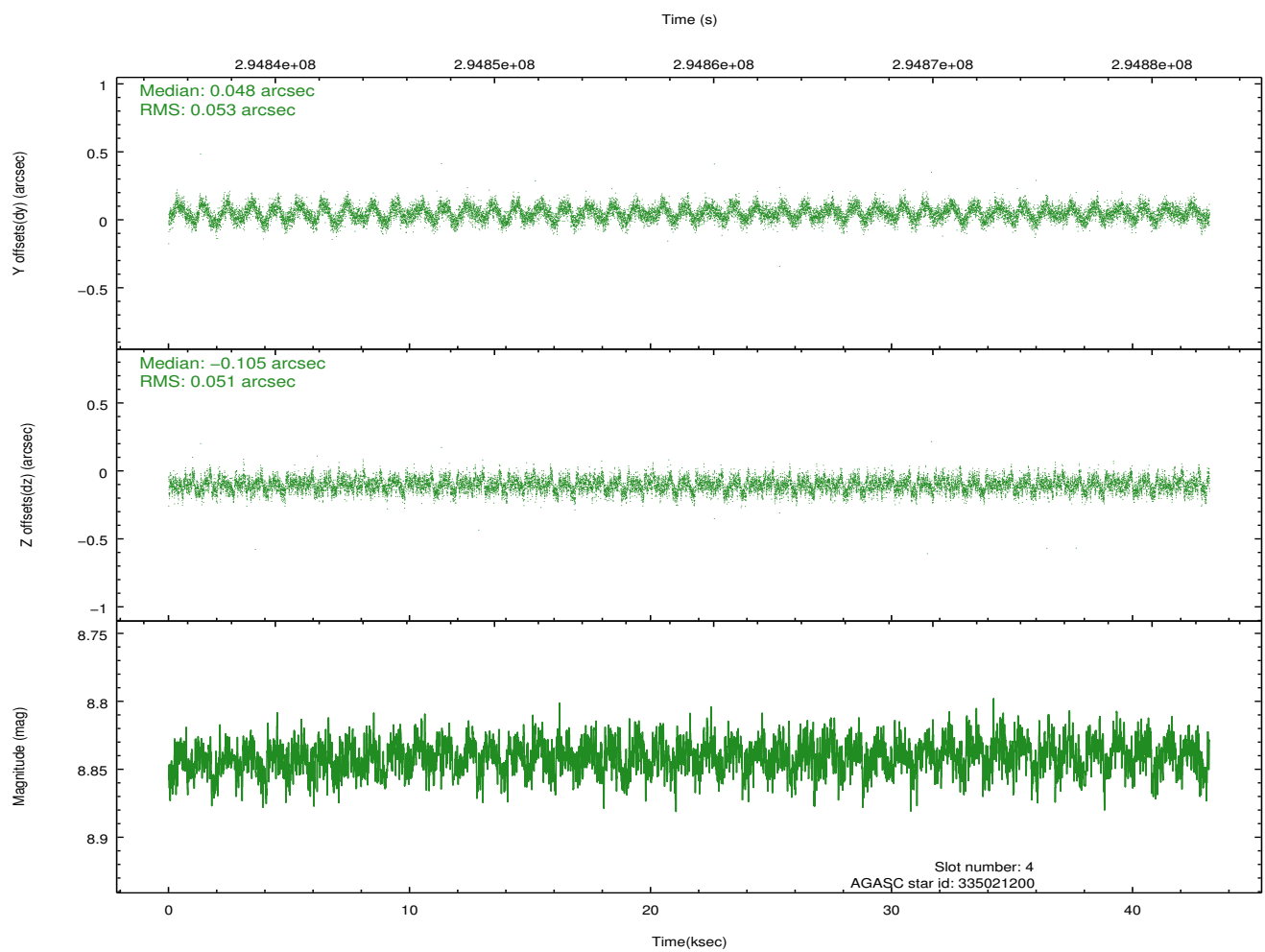
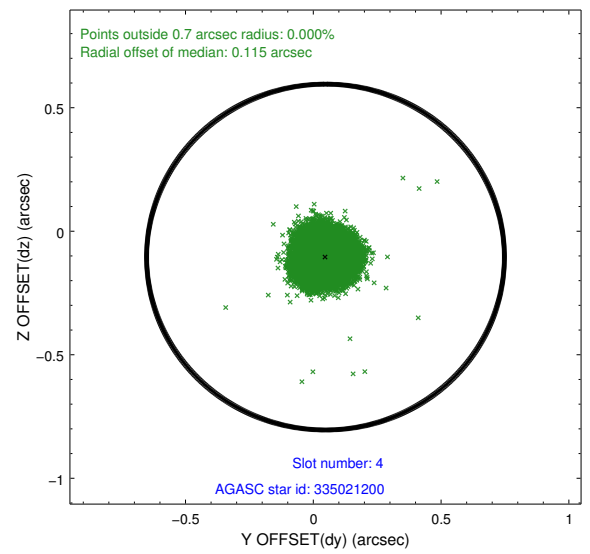
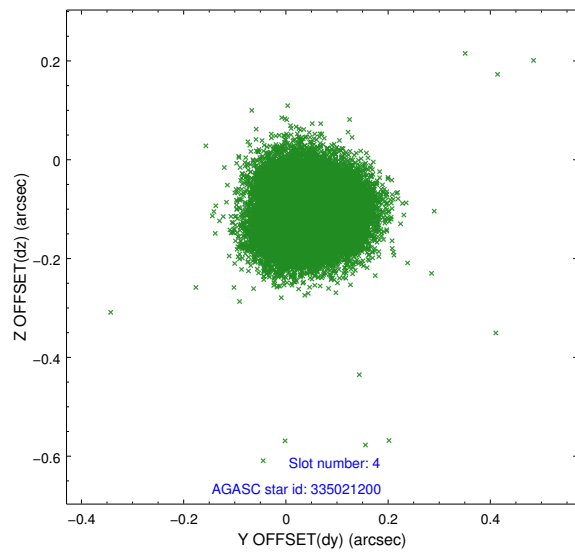
slot	status	id	mag	n_pts	med_dy	med_dz	dr1	dr2	ra	dec	mean_y	mean_z
0	FID	ACIS-I-1	7.23	10533	-0.011	0.037	0.009	0.017	0.000000	0.000000	925.85	-837.54
1	FID	ACIS-I-4	7.16	10534	0.201	0.004	0.008	0.013	0.000000	0.000000	2146.11	1062.22
2	FID	ACIS-I-5	7.22	10534	-0.288	0.030	0.008	0.013	0.000000	0.000000	-1822.42	1060.13
3	GUIDE	334627992	9.34	21052	-0.070	-0.084	0.104	0.172	216.814353	32.274859	291.82	1832.00
4	GUIDE	335021200	8.84	21056	0.048	-0.105	0.079	0.124	216.377257	32.627867	1433.51	391.08
5	GUIDE	335022112	9.21	21049	0.042	0.191	0.096	0.159	216.659296	32.794758	504.17	-85.53
6	GUIDE	335028240	9.18	21047	-0.035	-0.081	0.096	0.159	216.746851	33.385009	-46.27	-2155.70
7	GUIDE	335029808	9.08	21050	0.020	0.076	0.092	0.150	216.789548	33.180488	-74.13	-1408.54

2.4 Star Slots

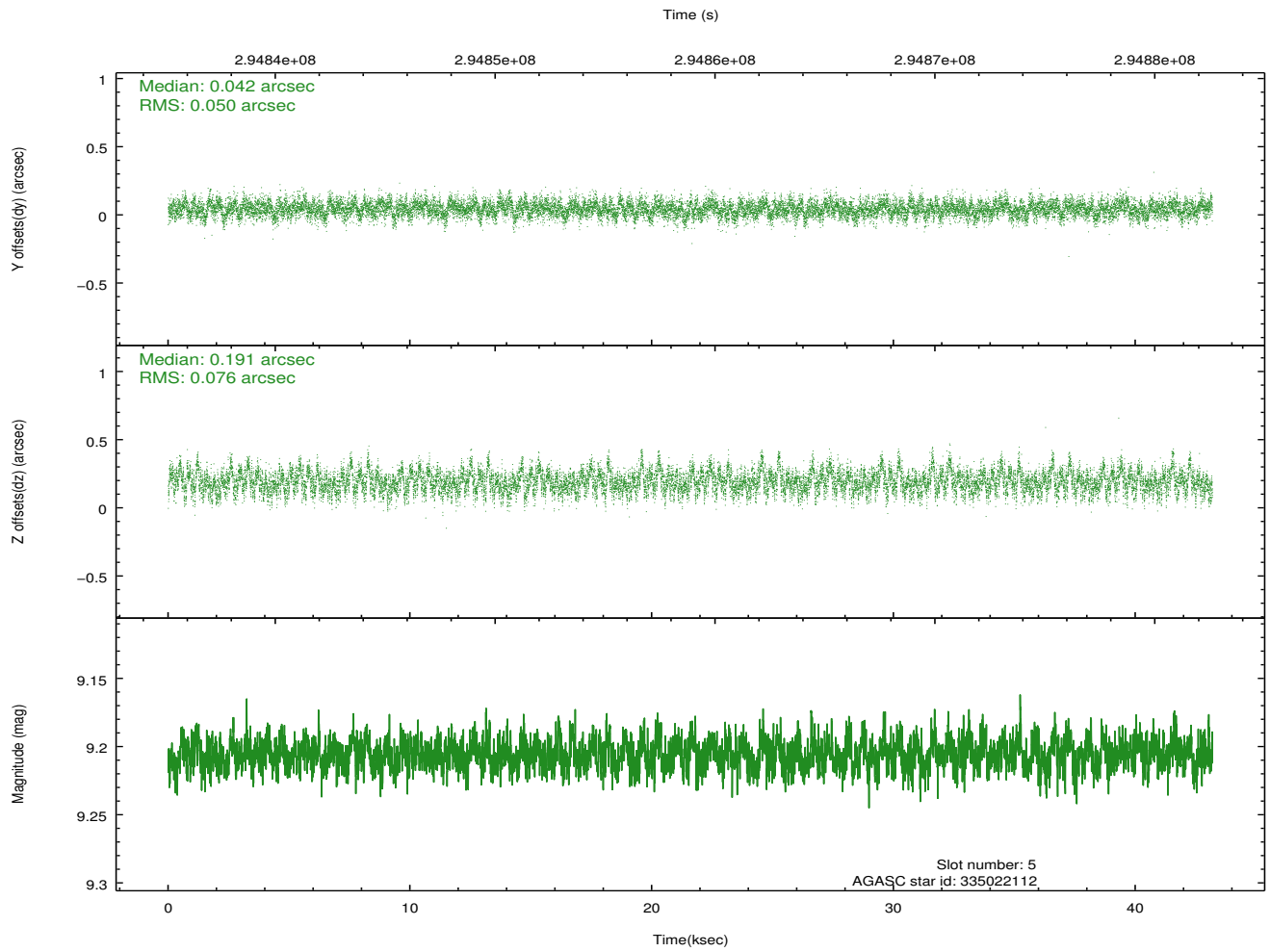
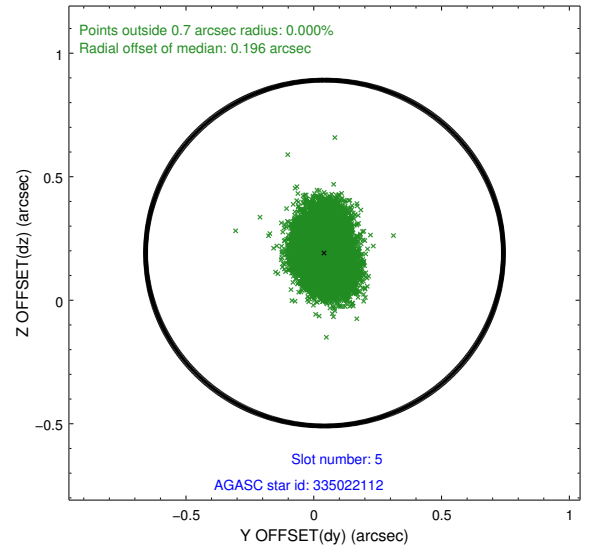
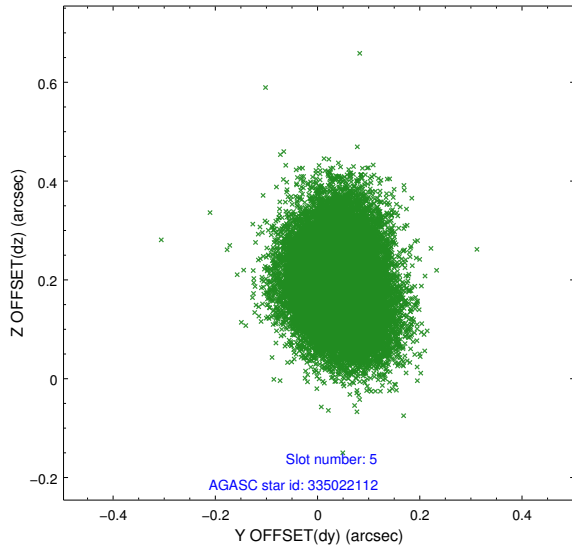
2.4.1 Slot 3



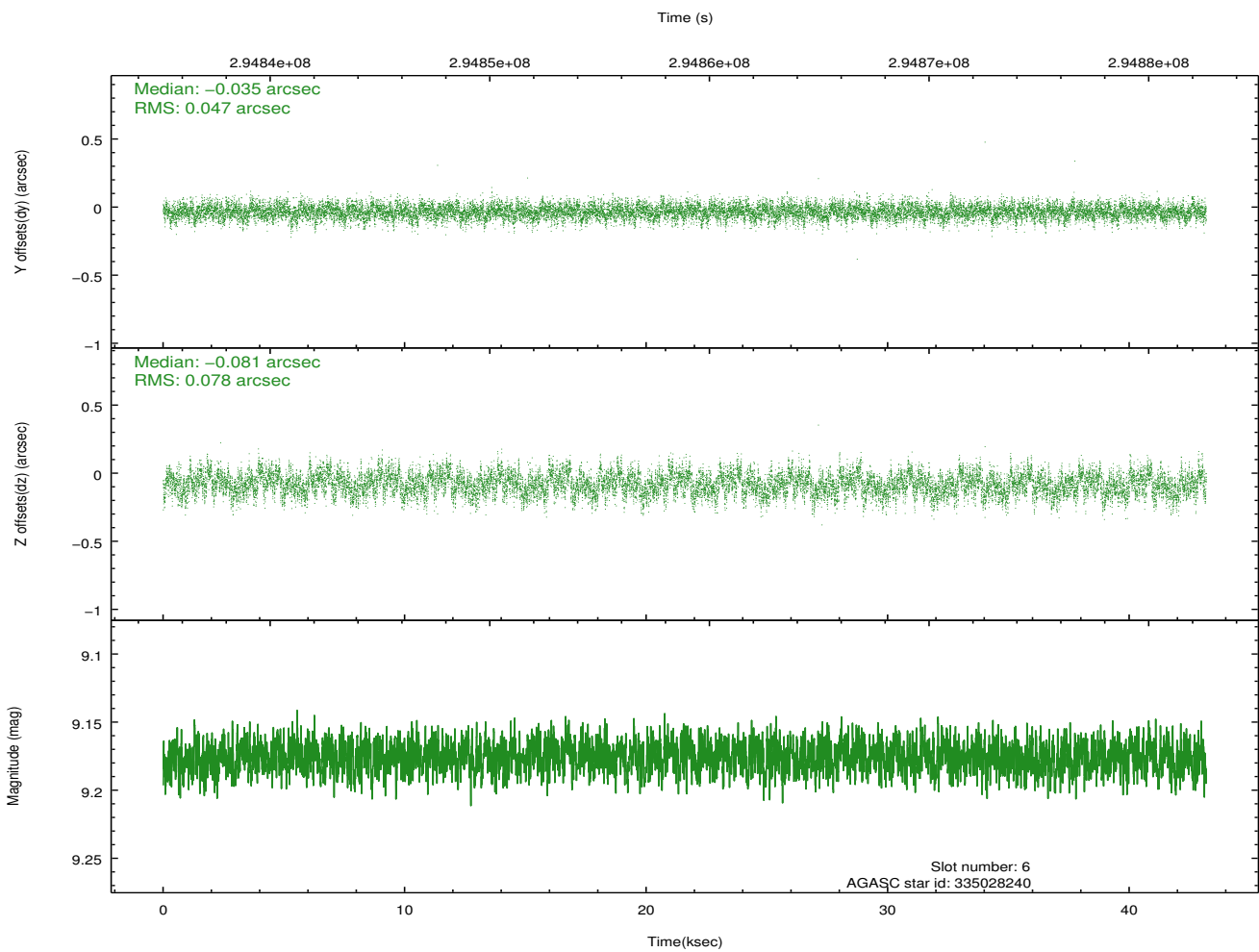
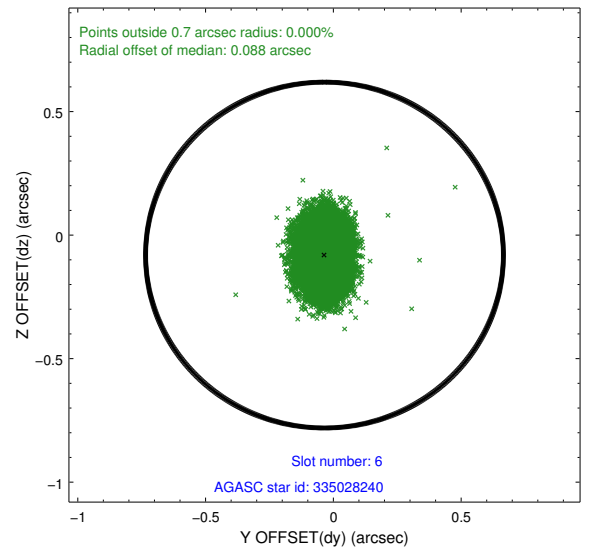
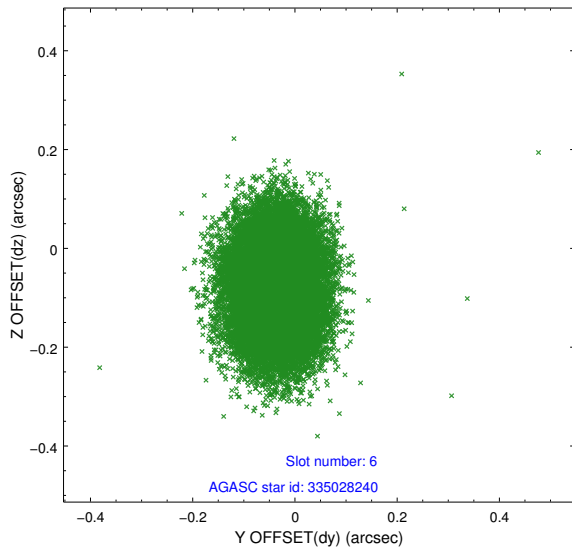
2.4.2 Slot 4



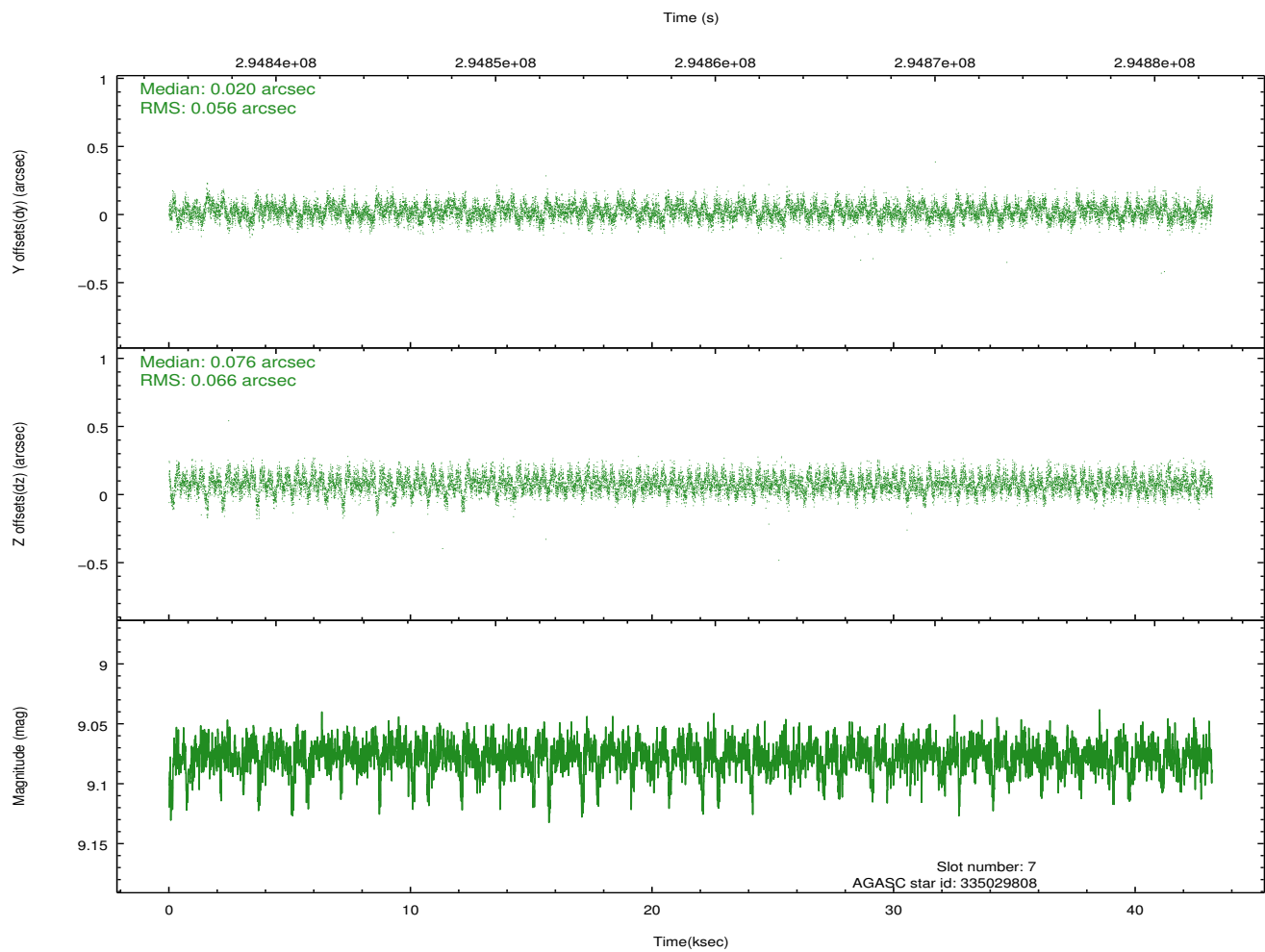
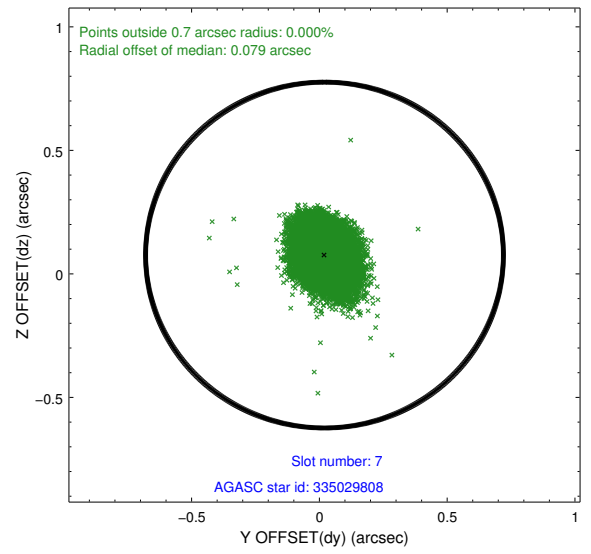
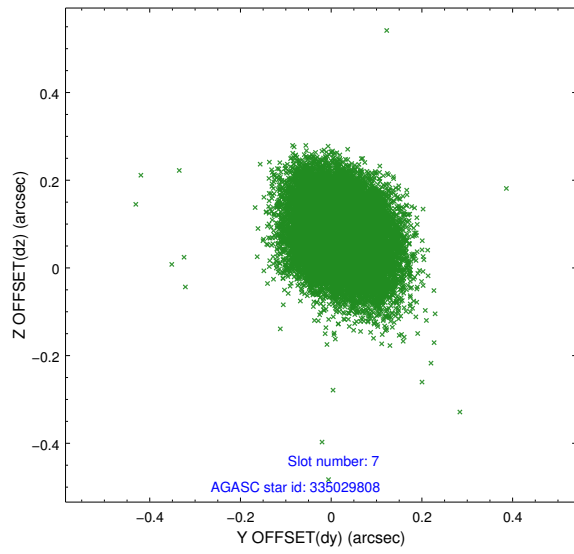
2.4.3 Slot 5



2.4.4 Slot 6

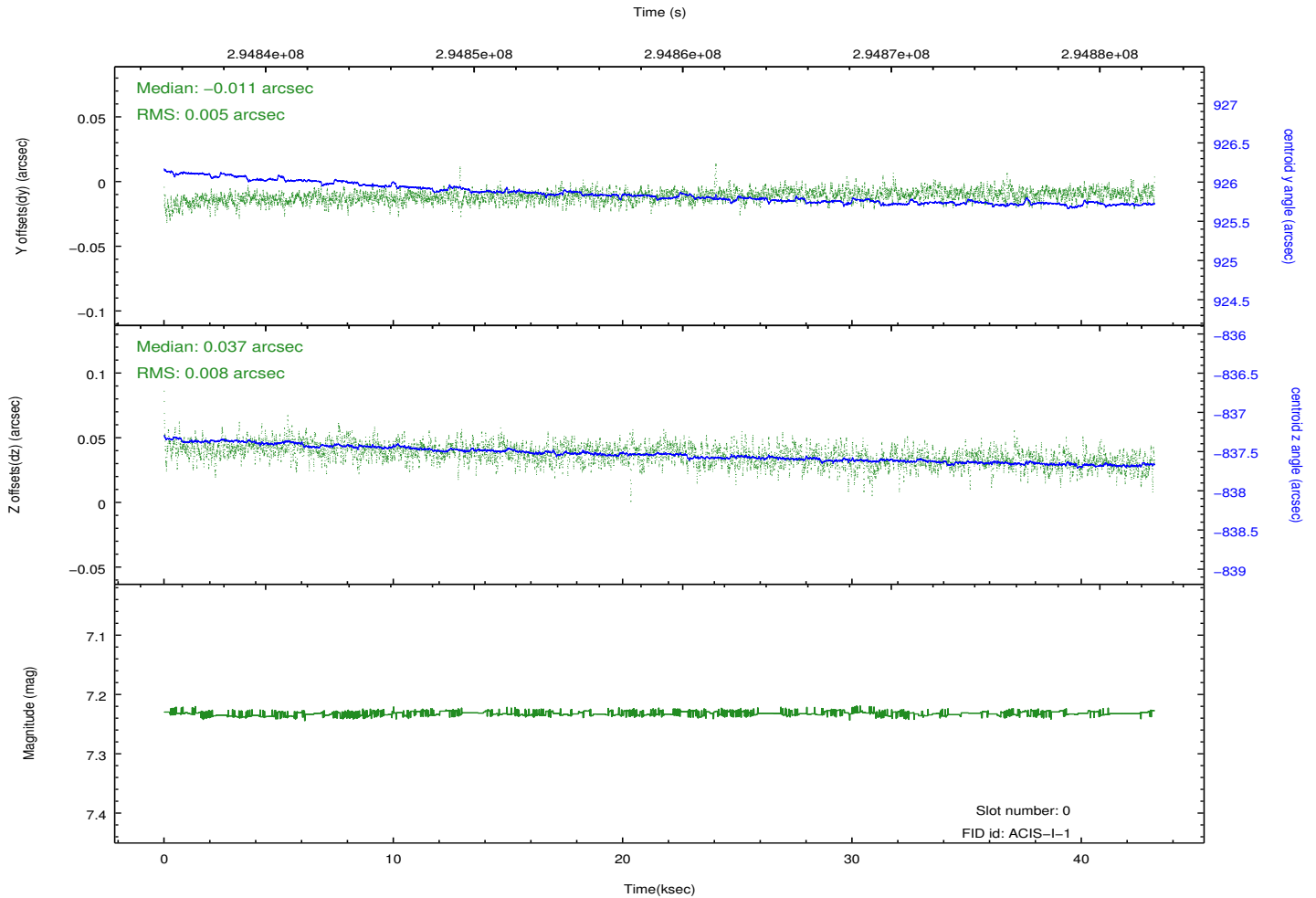
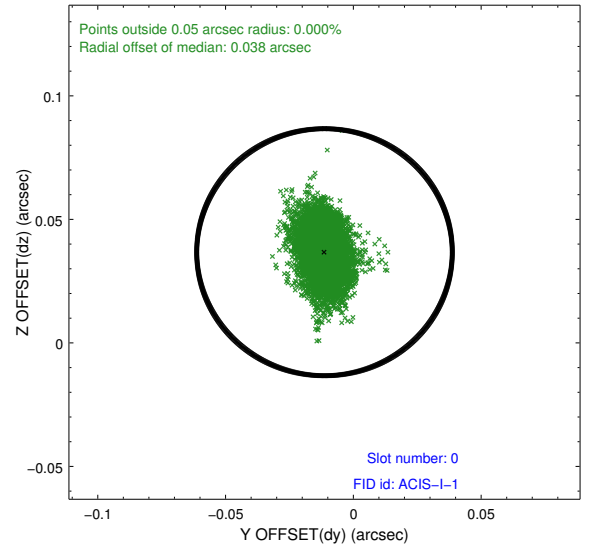
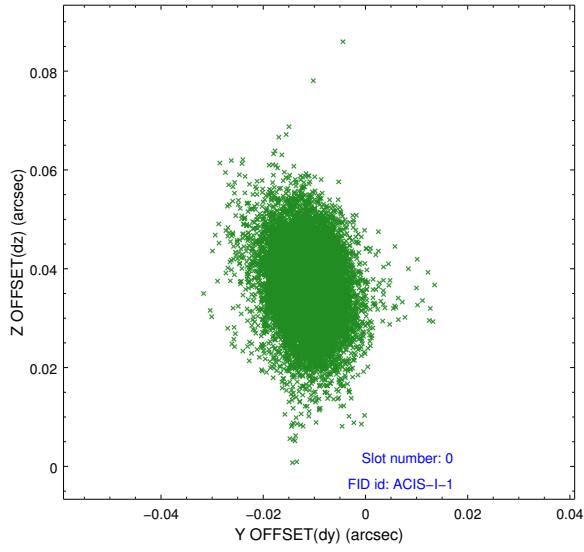


2.4.5 Slot 7

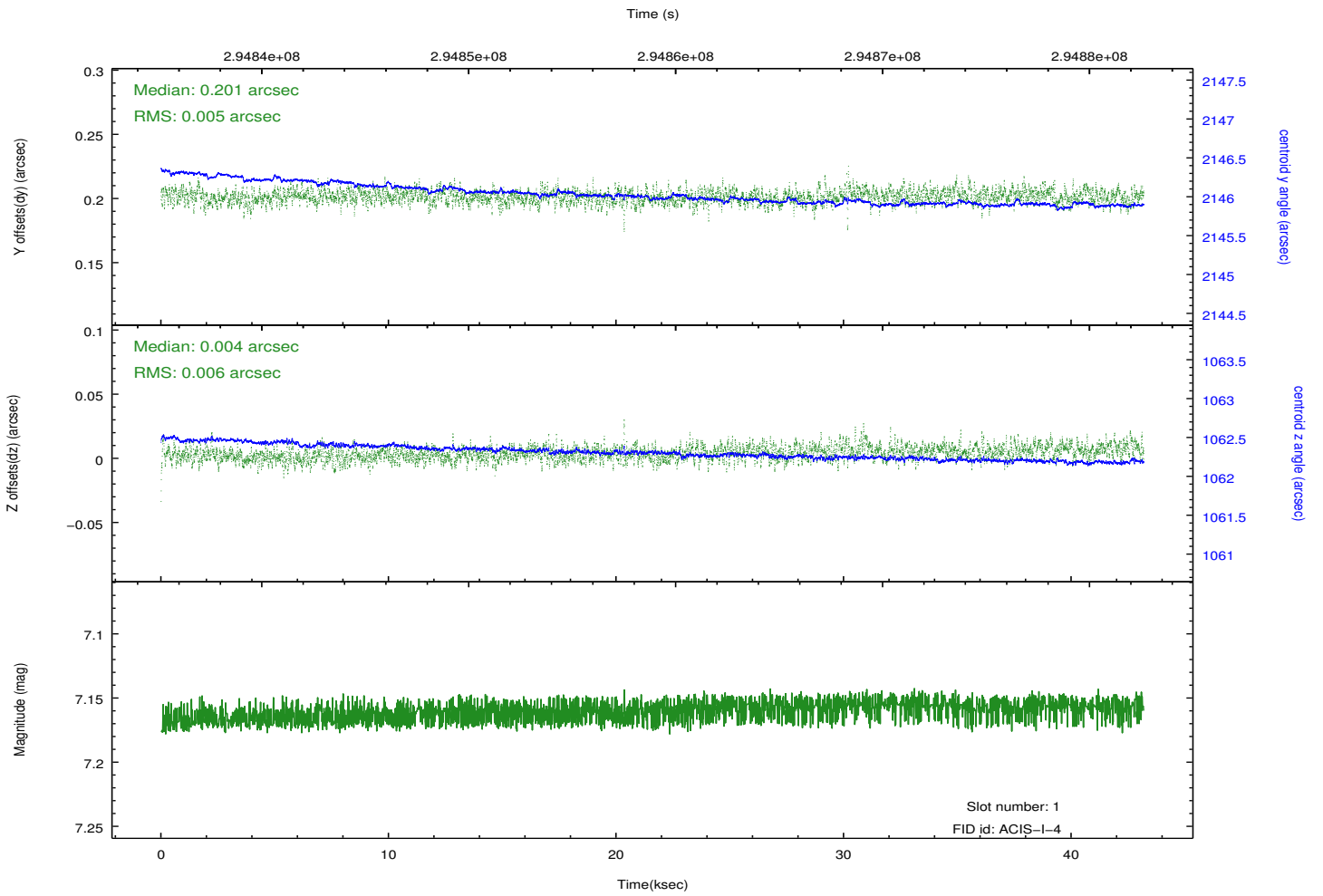
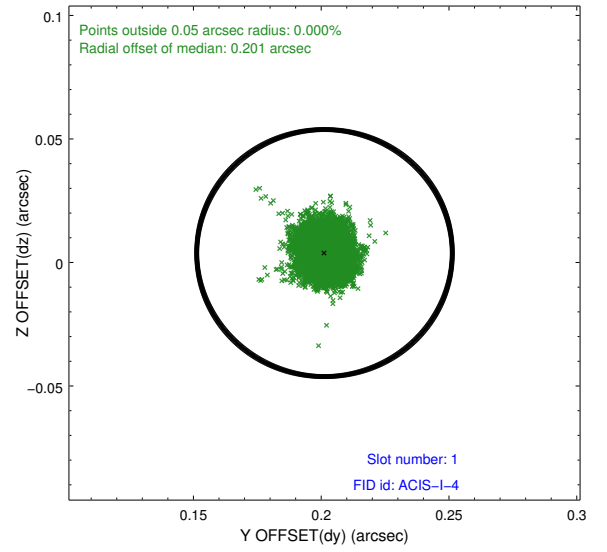
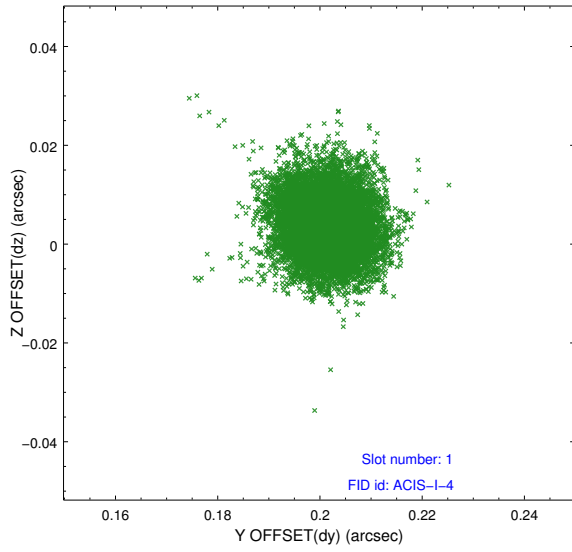


2.5 FID Slots

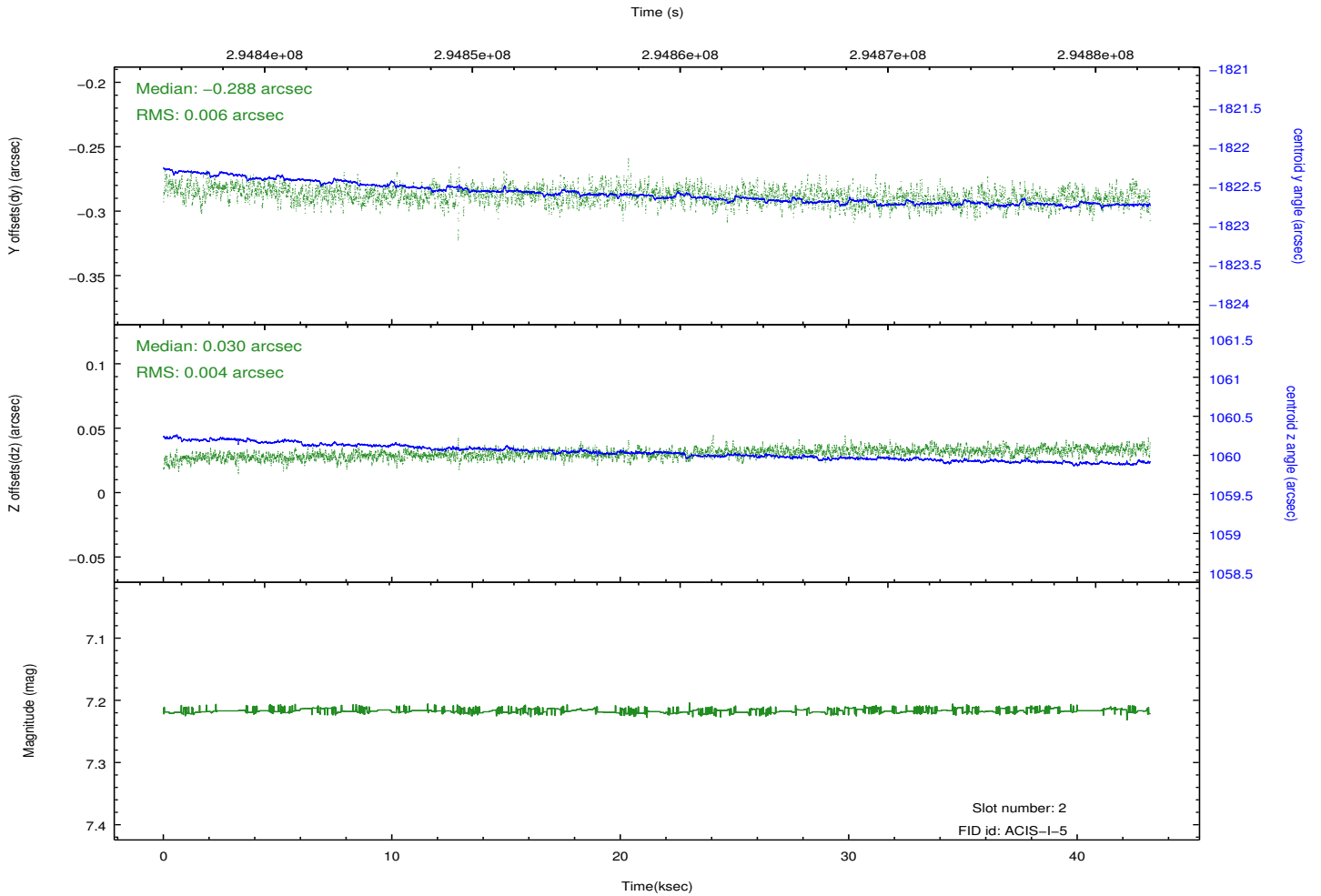
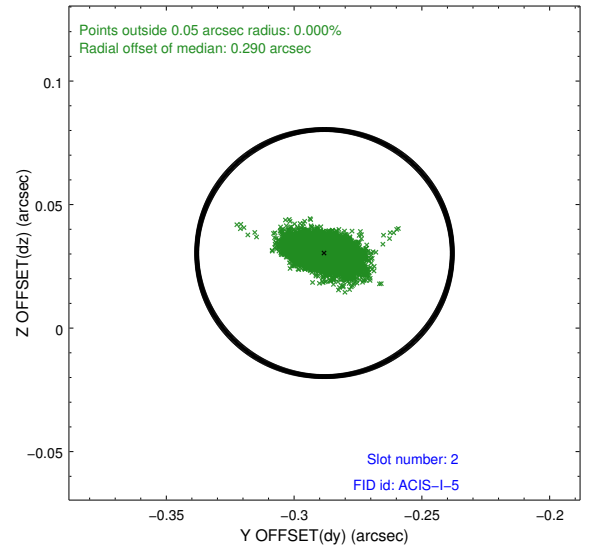
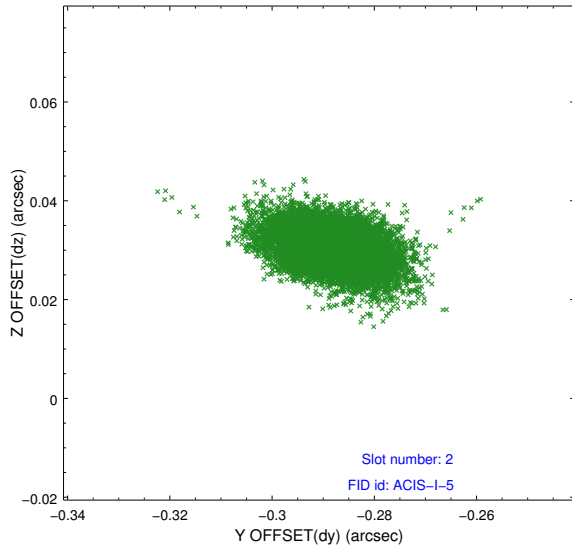
2.5.1 Slot 0



2.5.2 Slot 1



2.5.3 Slot 2



A Summary

A.1 Status

V&V Scientist	Joy Nichols
V&V Date (YYYY-MM-DD)	2012.04.25
V&V Edition	1
V&V Disposition and Status	OK
V&V Charge Time	42.7612363

A.2 Comments