

V&V Reference Report

L2 ASCDS Version : 8.4.3.1

Observation 8008 - L2 Version 3
Chandra X-Ray Center

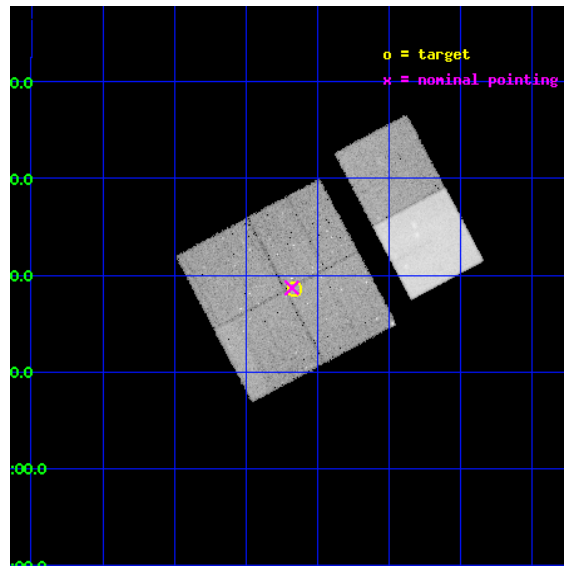
L2 Processing Date : Apr 16 2012

Contents

1	Front	2
2	OBI	3
2.1	OBI	3
2.1.1	Images	3
2.1.2	Bias	3
2.1.3	Parameters	4
2.1.4	Events	4
2.2	Compared Parameters	5
2.3	Aspect	6
2.4	Star Slots	9
2.4.1	Slot 3	9
2.4.2	Slot 4	10
2.4.3	Slot 5	11
2.4.4	Slot 6	12
2.4.5	Slot 7	13
2.5	FID Slots	14
2.5.1	Slot 0	14
2.5.2	Slot 1	15
2.5.3	Slot 2	16
A	Summary	17
A.1	Status	17
A.2	Comments	17

1 Front

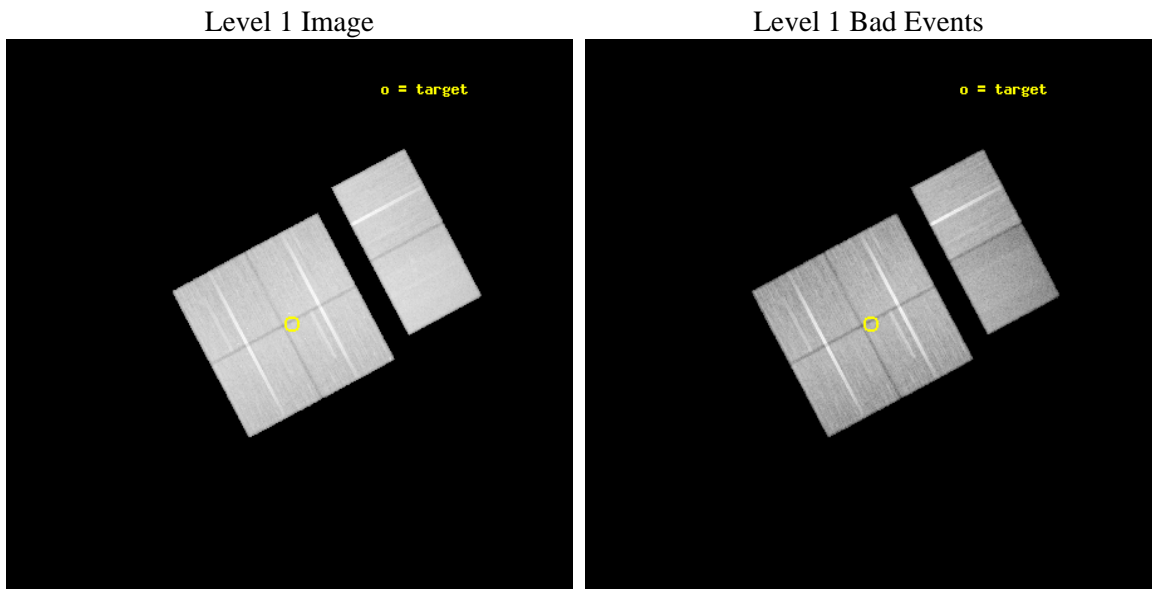
seq_num	900552	Sequence number
obs_id	8008	Observation id
title	THE CHANDRA-COSMOS SURVEY	Proposal title
observer	Dr. Martin Elvis	Principal investigator
object	C-COSMOS3-5	Source name
dtcycle	0	
cycle	P	events from which exps? Prim/Second/Both
ra_targ	149.916167	Observer's specified target RA [deg]
dec_targ	2.308519	Observer's specified target Dec [deg]
ra_nom	149.9197732834	Nominal RA [deg]
dec_nom	2.3115379418635	Nominal Dec [deg]
roll_nom	61.937354147212	Nominal Roll [deg]
revision	3	Processing version of data
ontime	47027.158834577	Sum of GTIs [s]
livetime	46431.672633058	Livetime [s]
ontime0	47023.917844296	Sum of GTIs [s]
ontime1	47017.43587333	Sum of GTIs [s]
ontime2	47030.399824858	Sum of GTIs [s]
ontime3	47027.158834577	Sum of GTIs [s]
ontime6	47027.158824742	Sum of GTIs [s]
ontime7	47030.399824858	Sum of GTIs [s]
l2events	320684	Number of level 2 events



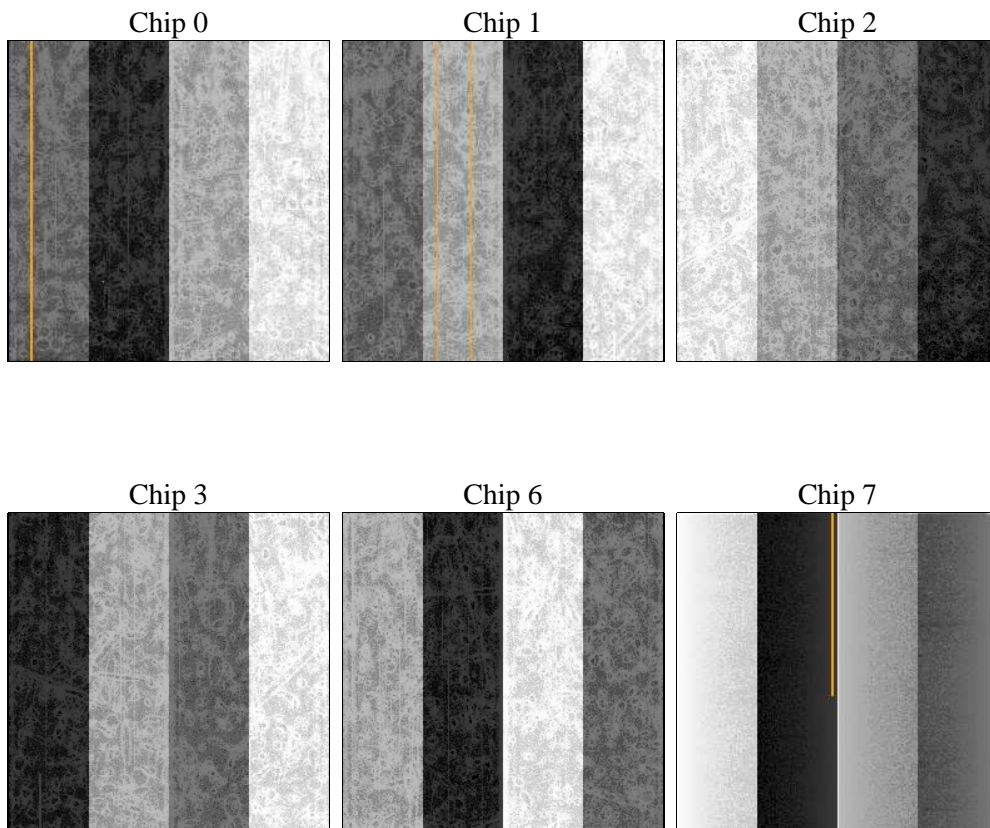
2 OBI

2.1 OBI

2.1.1 Images



2.1.2 Bias



2.1.3 Parameters

obi_num	0	Obi number	sched_exp_time	47000.000000	[s] Scheduled observation exposure time
ascdsver	8.4.3.1	Processing system revision	ontime	47027.158834577	Sum of GTIs [s]
caldbver	4.4.9	 	ontime0	47023.917844296	Sum of GTIs [s]
date	2012-04-16T14:22:18	Date and time of file creation	ontime1	47017.43587333	Sum of GTIs [s]
revision	3	Processing version of data	ontime2	47030.399824858	Sum of GTIs [s]
			ontime3	47027.158834577	Sum of GTIs [s]
			ontime6	47027.158824742	Sum of GTIs [s]
			ontime7	47030.399824858	Sum of GTIs [s]
			l1events	2132108	Number of level 1 events

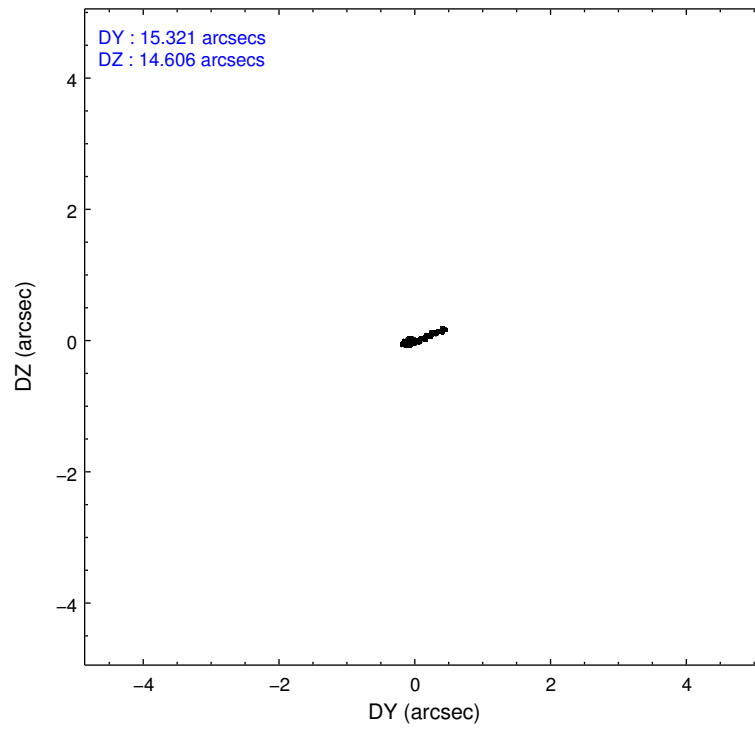
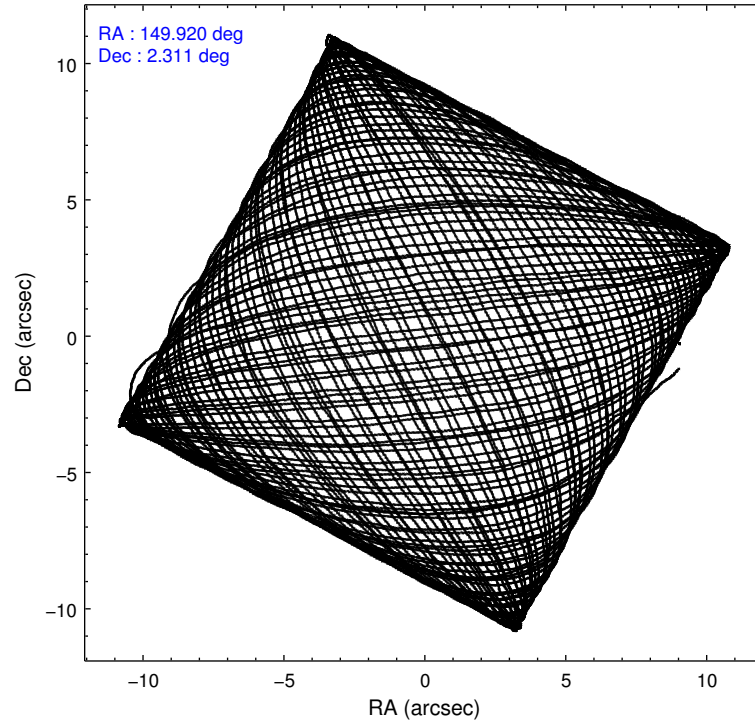
2.1.4 Events

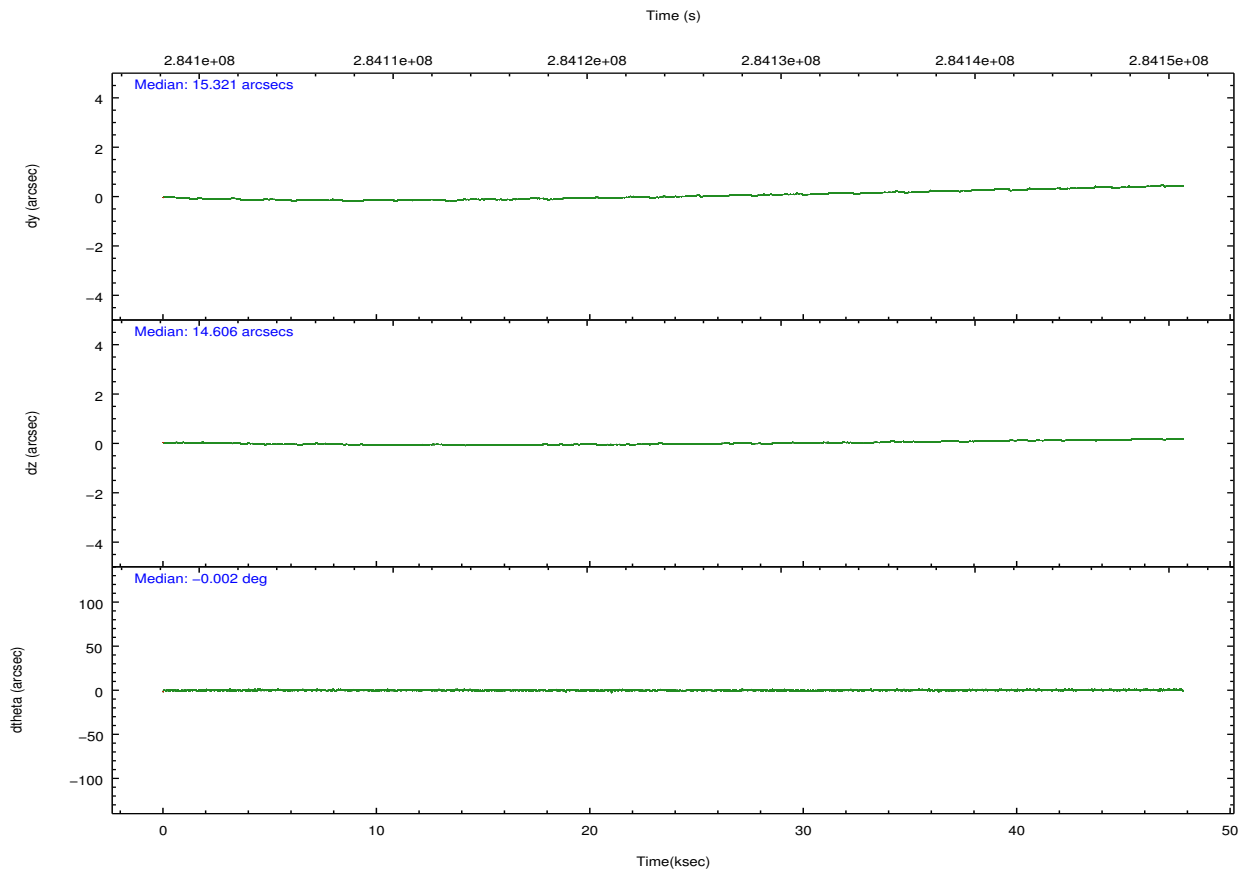
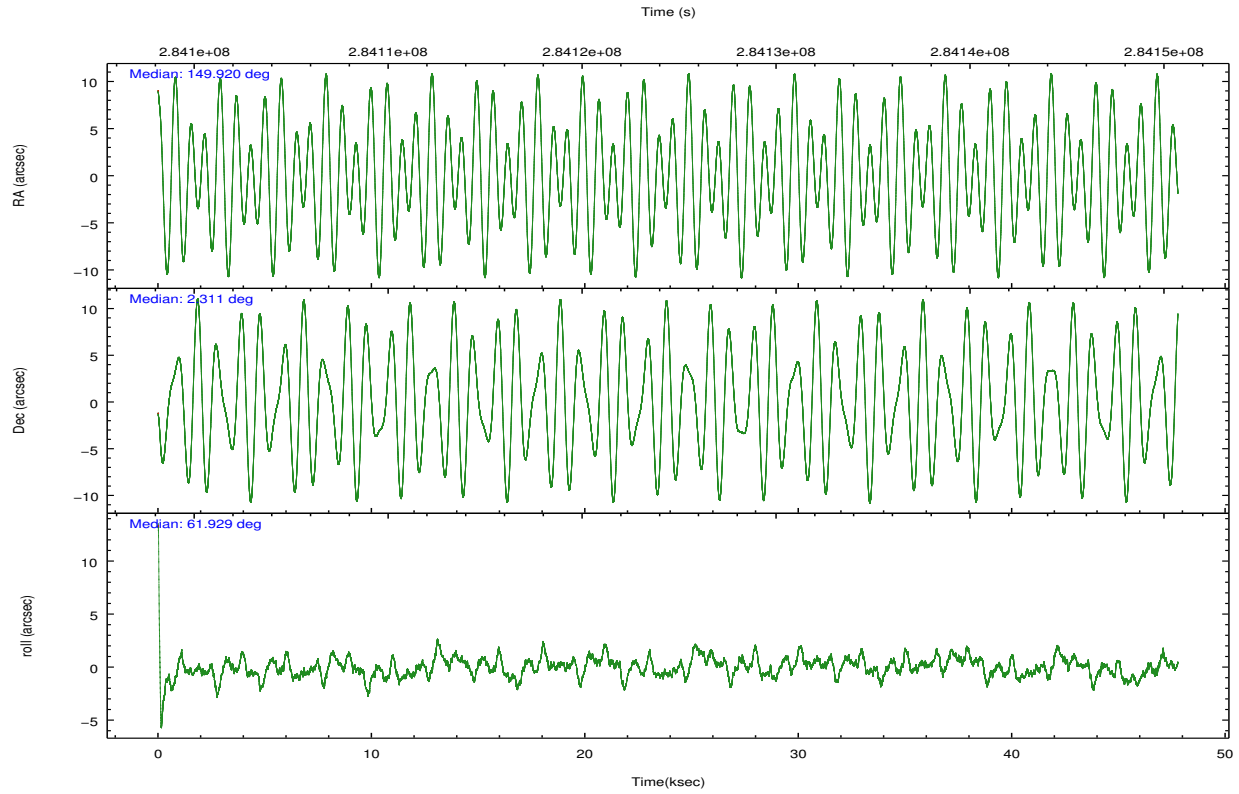
	ccd 0	ccd 1	ccd 2	ccd 3	ccd 6	ccd 7		ccd 0	ccd 1	ccd 2	ccd 3	ccd 6	ccd 7
level 1 events	332351	324620	374002	342829	368238	390068	grade 0 events	12384	13906	12961	12084	12506	16941
rejected events	297370	285968	339408	309656	331760	211947		3%	4%	3%	3%	3%	4%
rejected %	89%	88%	90%	90%	90%	54%	grade 1 events	165	183	176	220	169	477
								0%	0%	0%	0%	0%	0%
							grade 2 events	8160	8522	7998	7063	8117	35998
								2%	2%	2%	2%	2%	9%
							grade 3 events	4020	4112	3635	3743	3990	16385
								1%	1%	0%	1%	1%	4%
							grade 4 events	3716	4188	3758	3738	3905	16101
								1%	1%	1%	1%	1%	4%
							grade 5 events	11724	13206	11306	13980	14596	40615
								3%	4%	3%	4%	3%	10%
							grade 6 events	6704	7929	6245	6550	7971	92729
								2%	2%	1%	1%	2%	23%
							grade 7 events	285478	272574	327923	295451	316984	170822
								85%	83%	87%	86%	86%	43%

2.2 Compared Parameters

Parameter	Planned	Actual	Parameter	Planned	Actual
Instrument	ACIS	ACIS	Obspar format version number	7	7
Detector	ACIS-012367	ACIS-012367	Obspar file type	PREDICTED	ACTUAL
Grating	NONE	NONE	Obspar update status	NONE	UPDATED
Data mode	VFAINT	VFAINT	CCD I0 on	Y	Y
Observation mode	POINTING	POINTING	CCD I1 on	Y	Y
[deg] Pointing RA	149.920806	149.9197732834033	CCD I2 on	Y	Y
[deg] Pointing Dec	2.284072	2.311537941863469	CCD I3 on	Y	Y
[deg] Pointing Roll	61.728626	61.93735414721154	CCD S0 on	N	N
[mm] SIM focus pos	-0.782348	-0.7809083437167272	CCD S1 on	N	N
[mm] SIM defocus	0	0.001439871863259334	CCD S2 on	O1	Y
[mm] SIM translation stage pos	-233.592463	-233.5874344608287	CCD S3 on	O2	Y
[mm] SIM translation stage offset	0	-0.005018542100998502	CCD S4 on	N	N
[s] Observation start time (MET)	284101333.184000	284100031.24749	CCD S5 on	N	N
Observation start date	2007-01-02T05:01:08	2007-01-02T04:40:31	Number of optional ACIS chips dropped	0	0
[s] Observation end time (MET)	284148333.184000	284148467.62478	On-chip summing requested	N	N
Observation end date	2007-01-02T18:04:28	2007-01-02T18:07:47	Subarray requested	NONE	NONE
Read mode	TIMED	TIMED	Alternating exposures requested	N	N
			[s] Primary exposure time	0.000000	3.2

2.3 Aspect



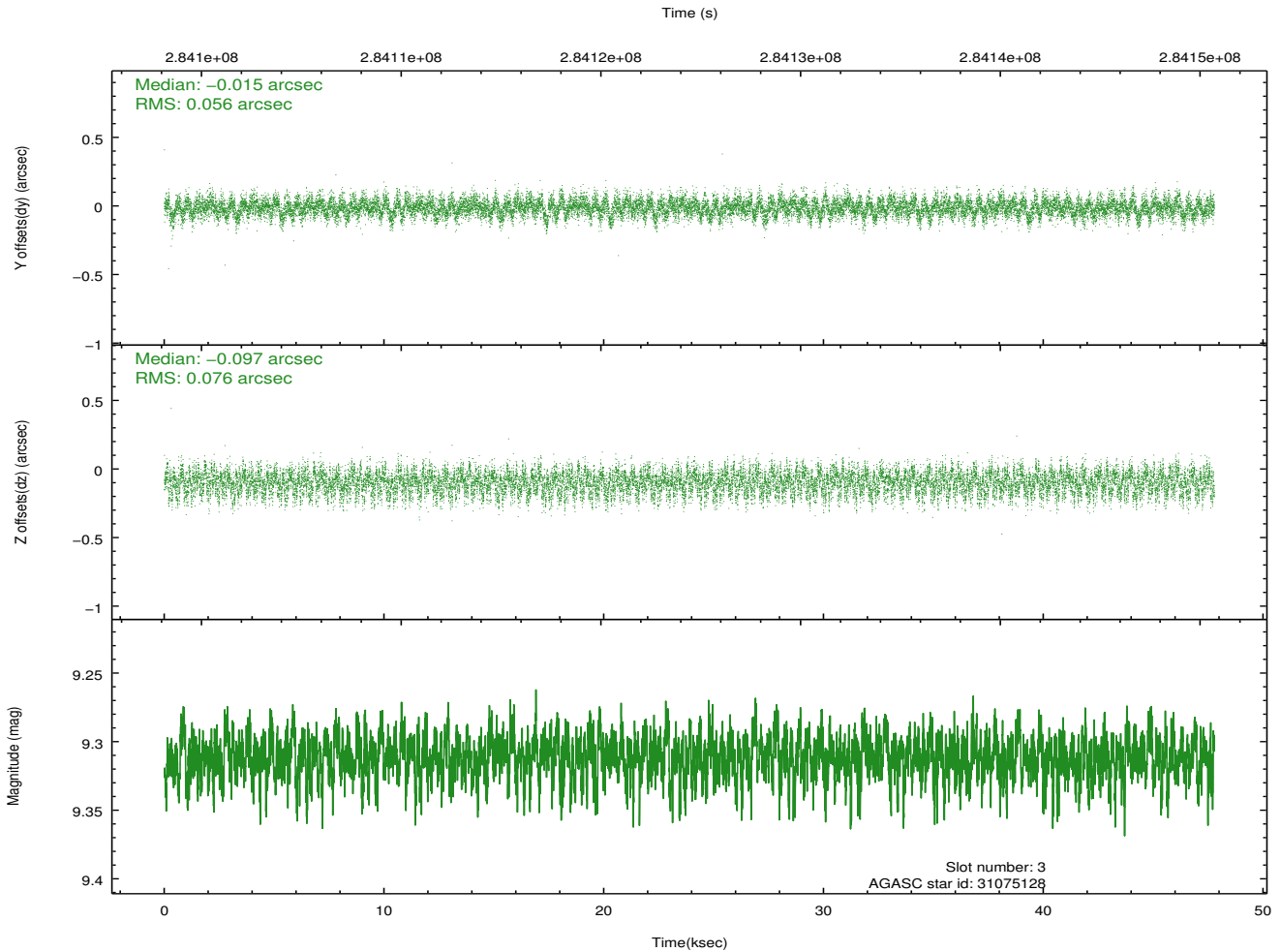
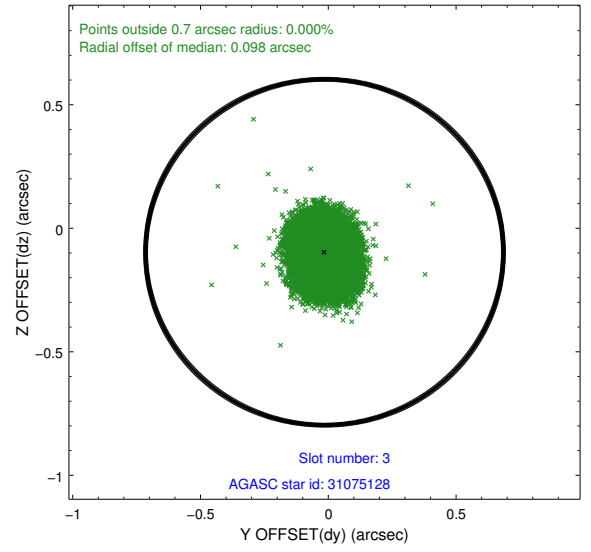
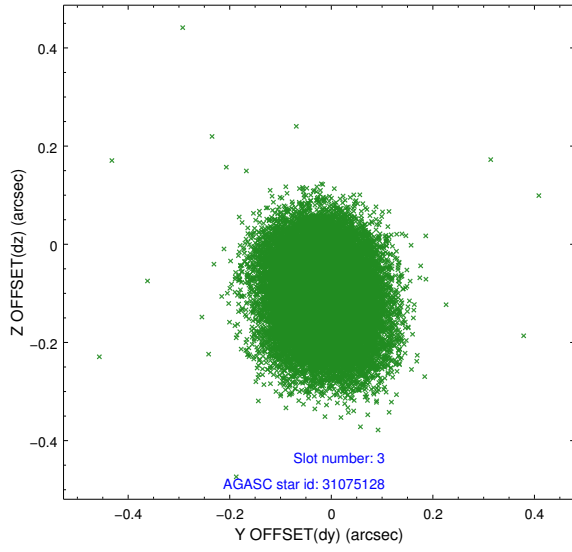


Slot Statistics

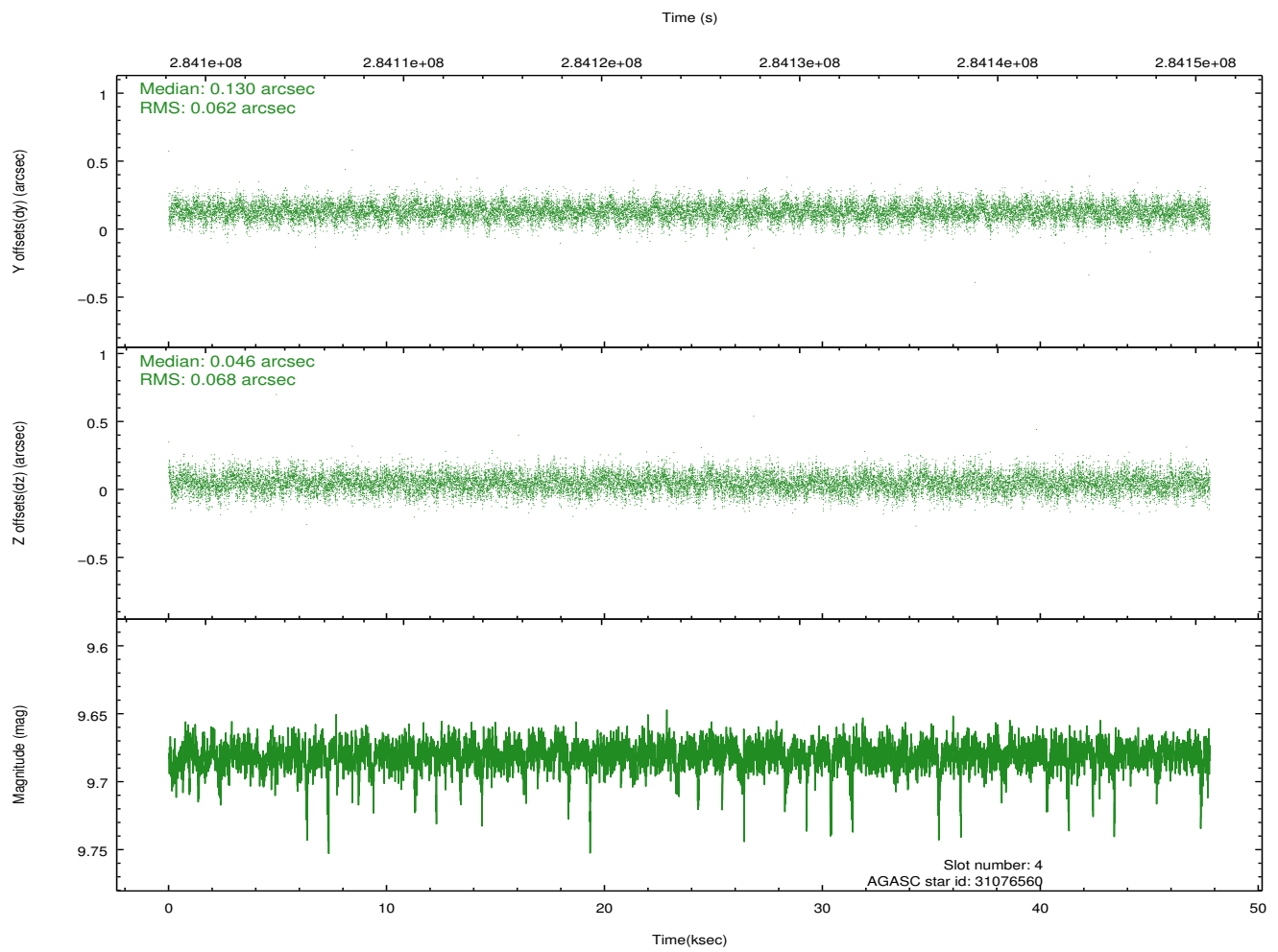
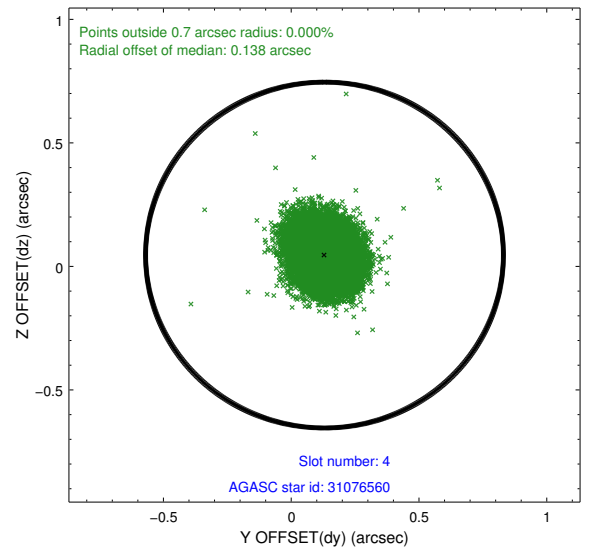
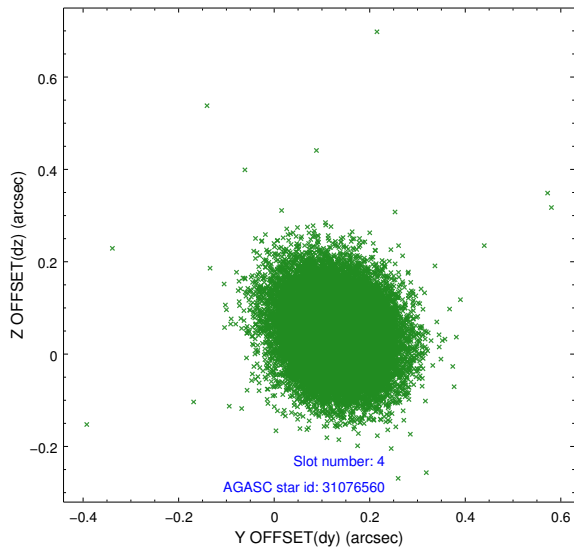
slot	status	id	mag	n_pts	med_dy	med_dz	dr1	dr2	ra	dec	mean_y	mean_z
0	FID	ACIS-I-1	7.24	11653	0.038	-0.006	0.009	0.016	0.000000	0.000000	924.12	-838.22
1	FID	ACIS-I-5	7.23	11654	-0.233	0.037	0.006	0.011	0.000000	0.000000	-1824.28	1059.31
2	FID	ACIS-I-6	7.25	11650	0.104	0.040	0.009	0.016	0.000000	0.000000	389.73	1703.81
3	GUIDE	31075128	9.31	23282	-0.015	-0.097	0.101	0.161	149.584516	2.364347	-318.08	1202.25
4	GUIDE	31076560	9.68	23290	0.130	0.046	0.098	0.159	149.884782	2.009277	-932.26	-354.57
5	GUIDE	31463496	9.45	23283	-0.064	-0.152	0.096	0.159	149.845020	2.964001	2026.83	1399.66
6	GUIDE	31983336	8.60	23301	0.091	0.103	0.070	0.113	150.429924	2.291234	891.27	-1600.12
7	GUIDE	32374896	9.23	23222	-0.143	0.102	0.103	0.166	150.682269	2.512794	2023.56	-2021.27

2.4 Star Slots

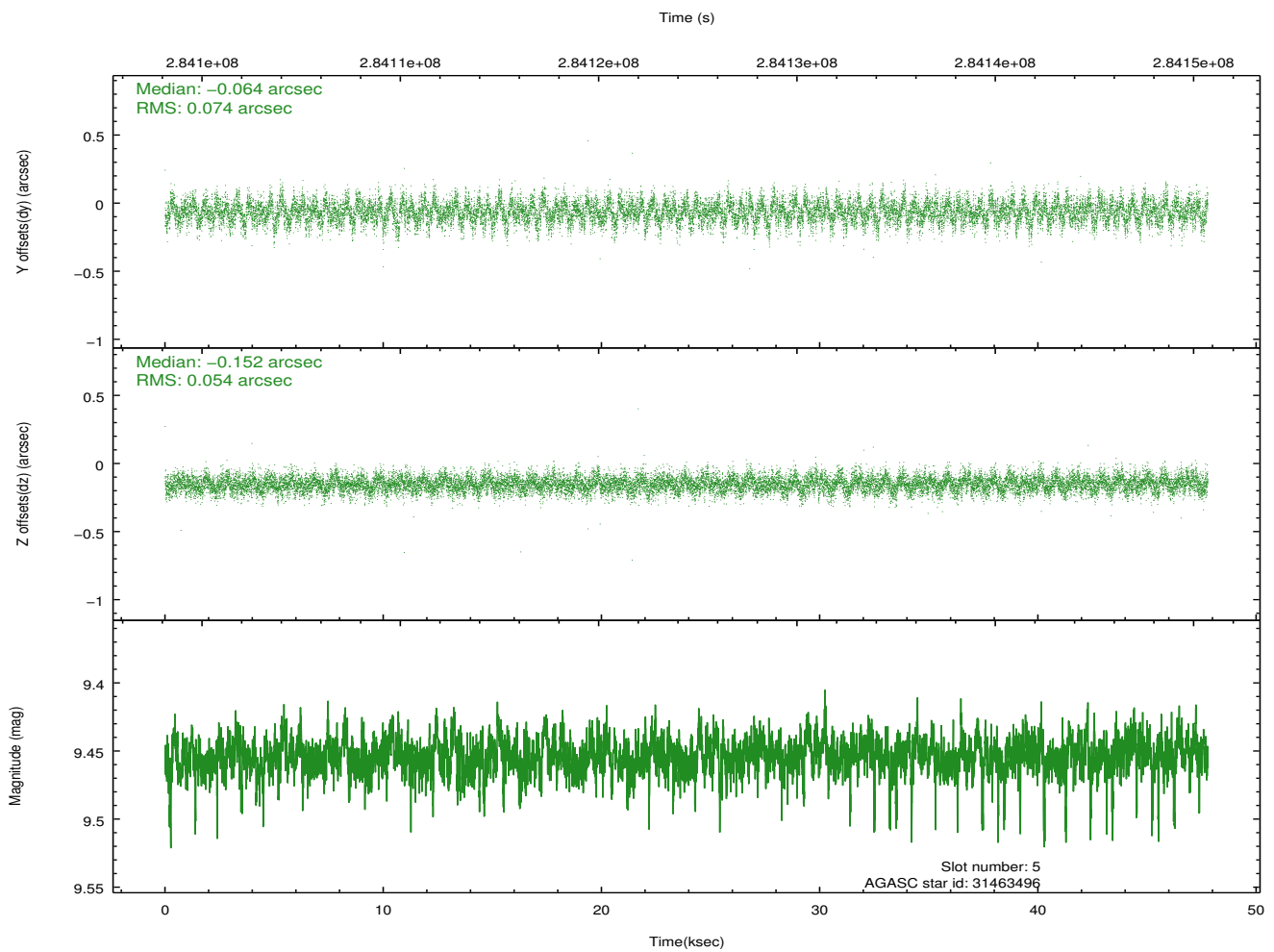
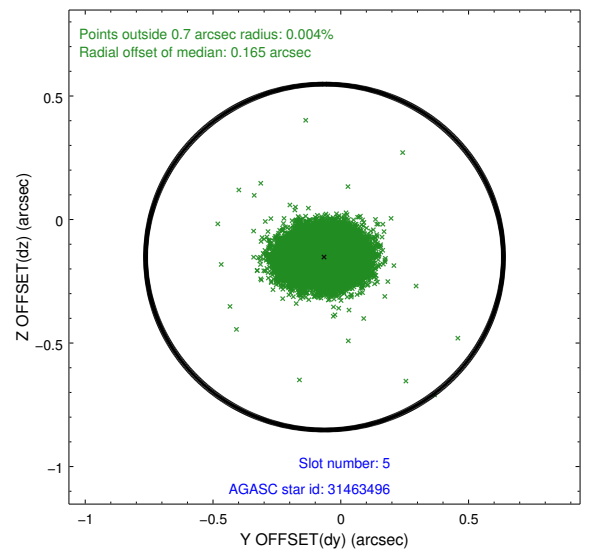
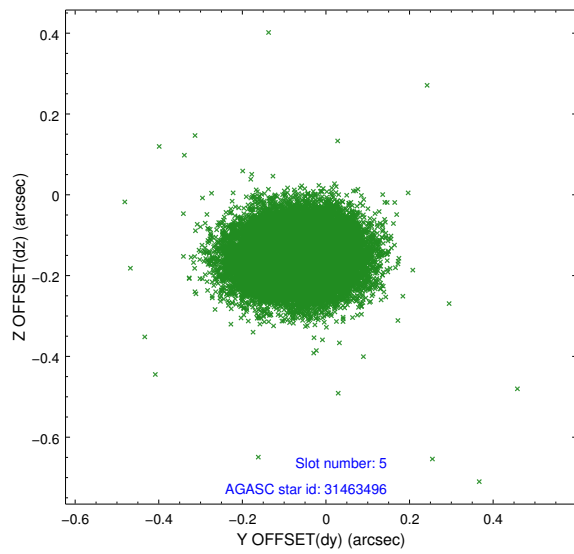
2.4.1 Slot 3



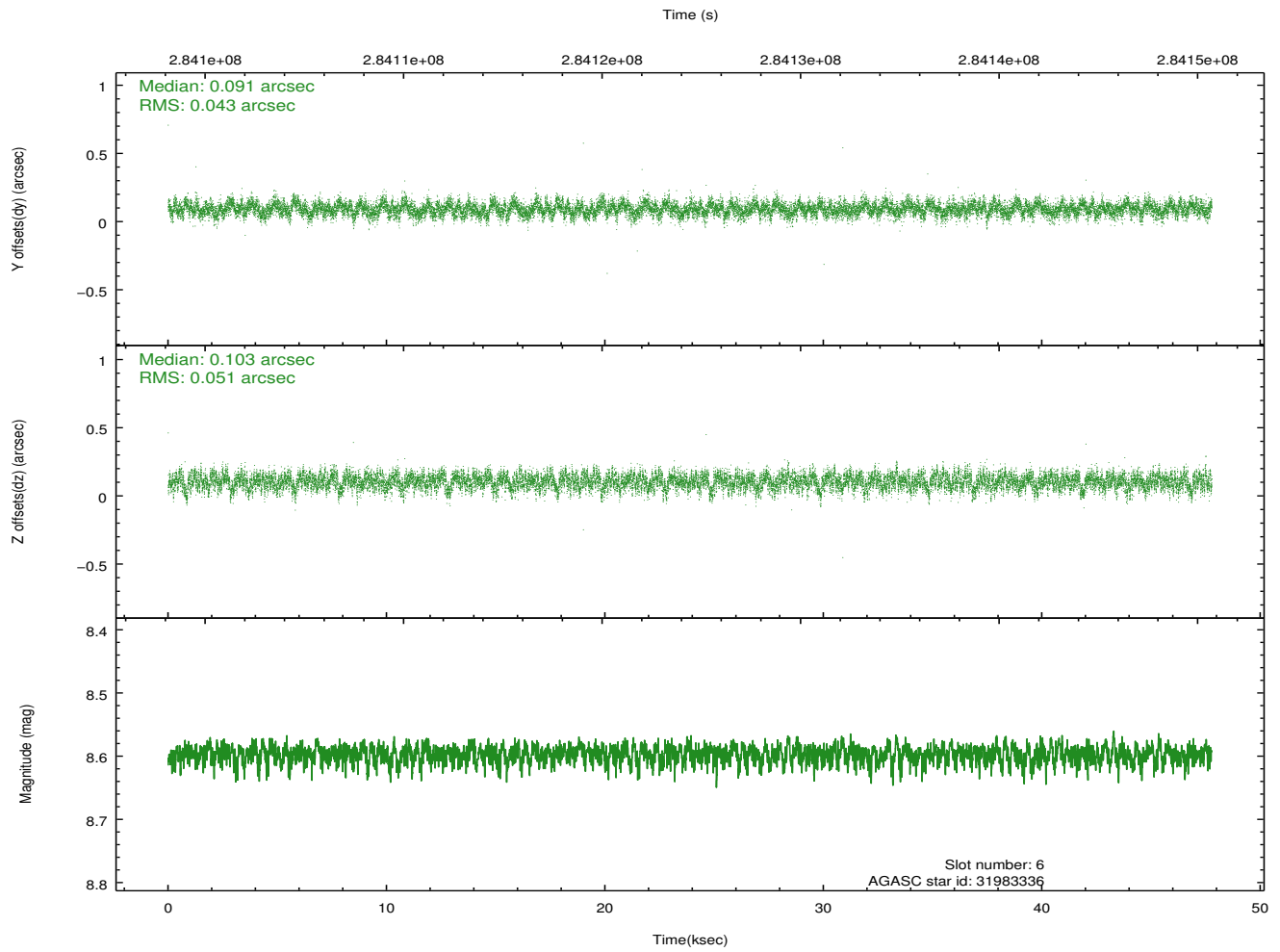
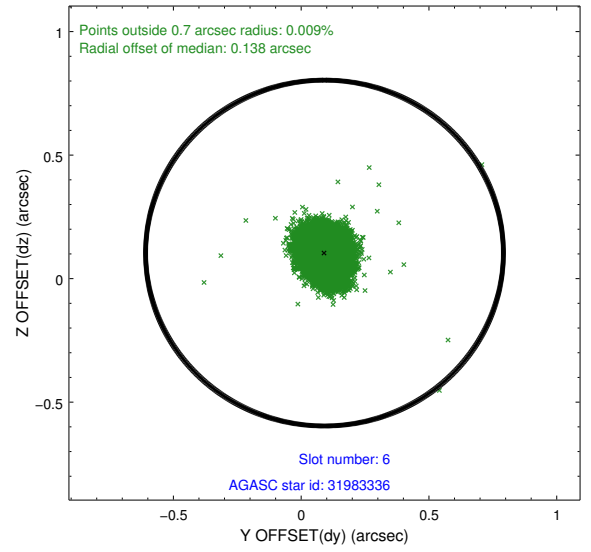
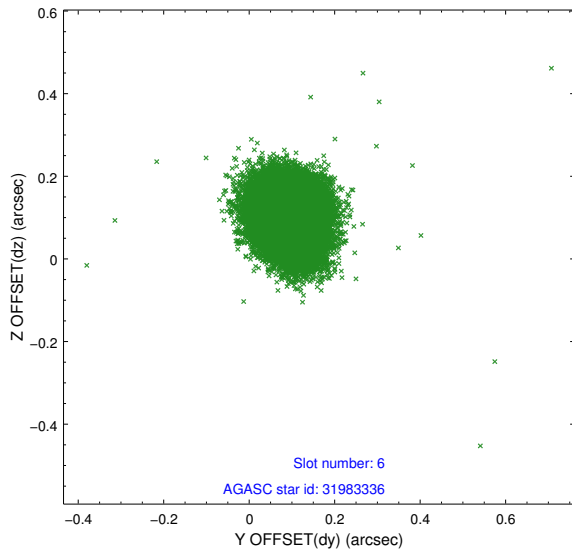
2.4.2 Slot 4



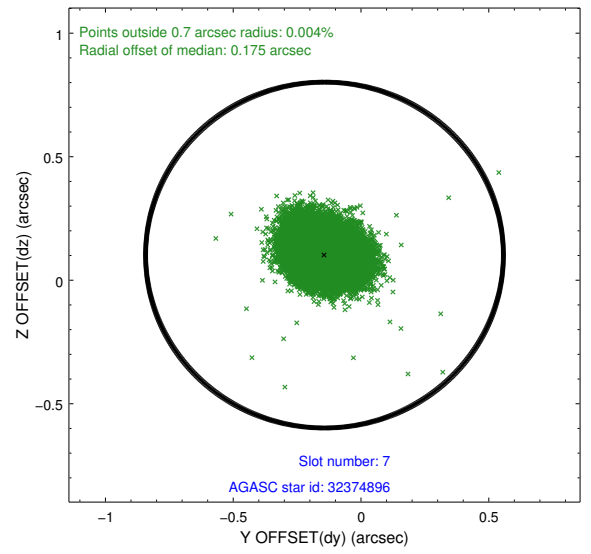
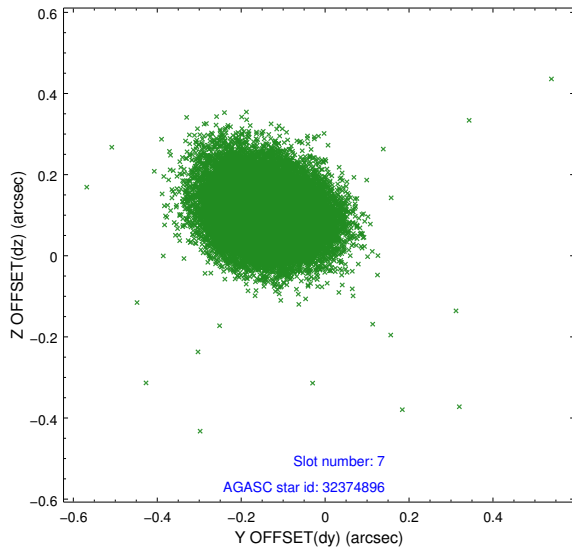
2.4.3 Slot 5



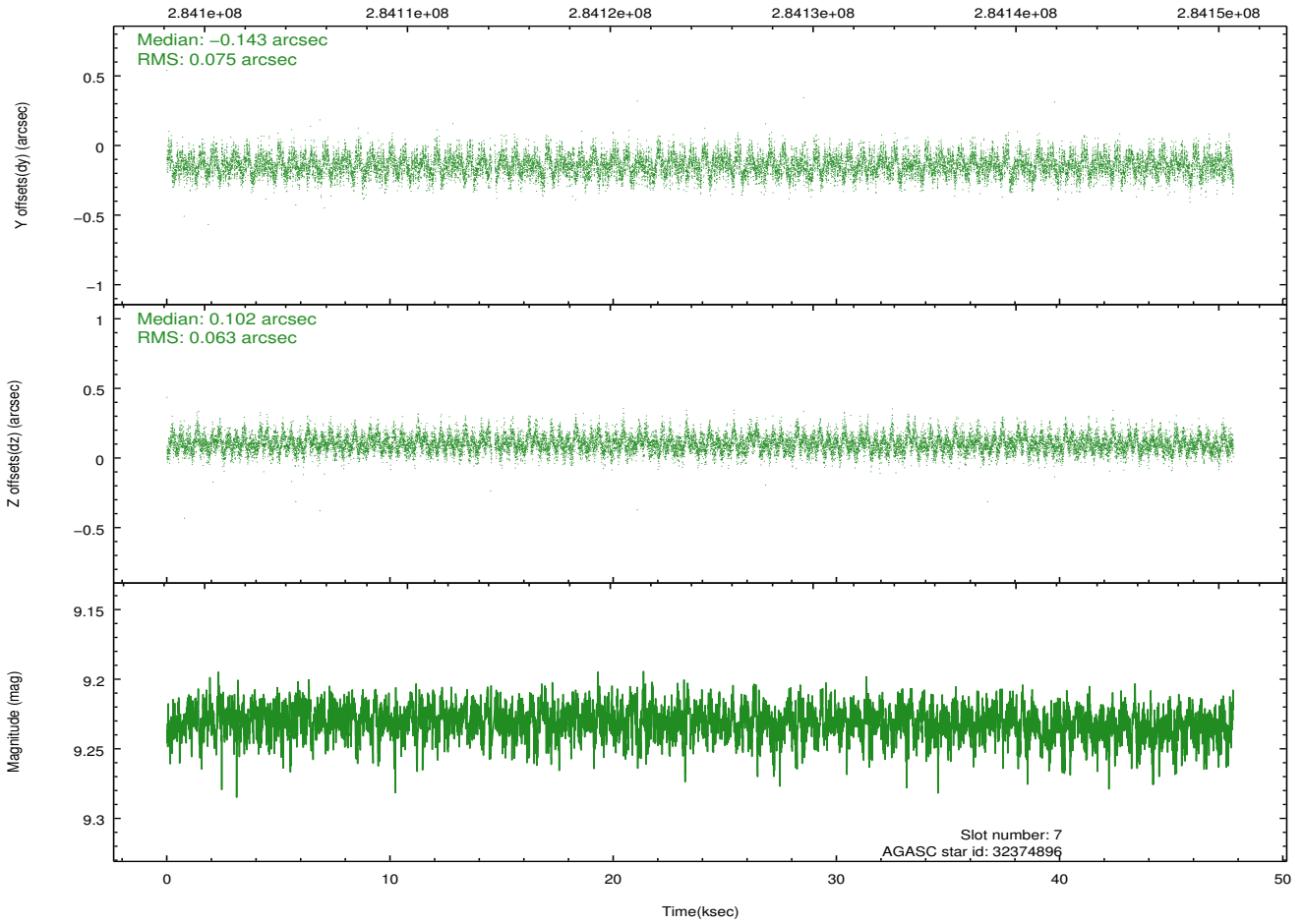
2.4.4 Slot 6



2.4.5 Slot 7

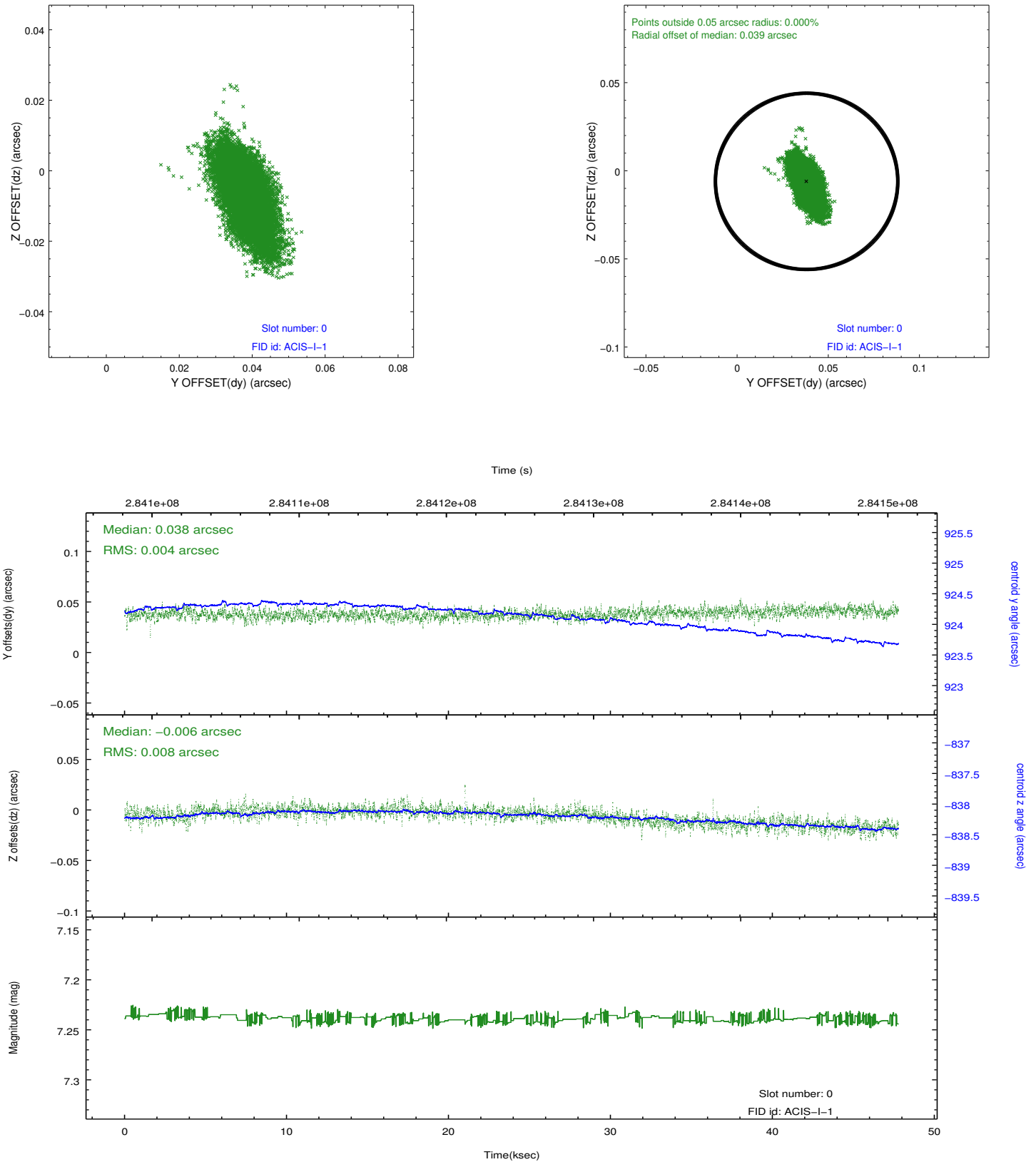


Time (s)

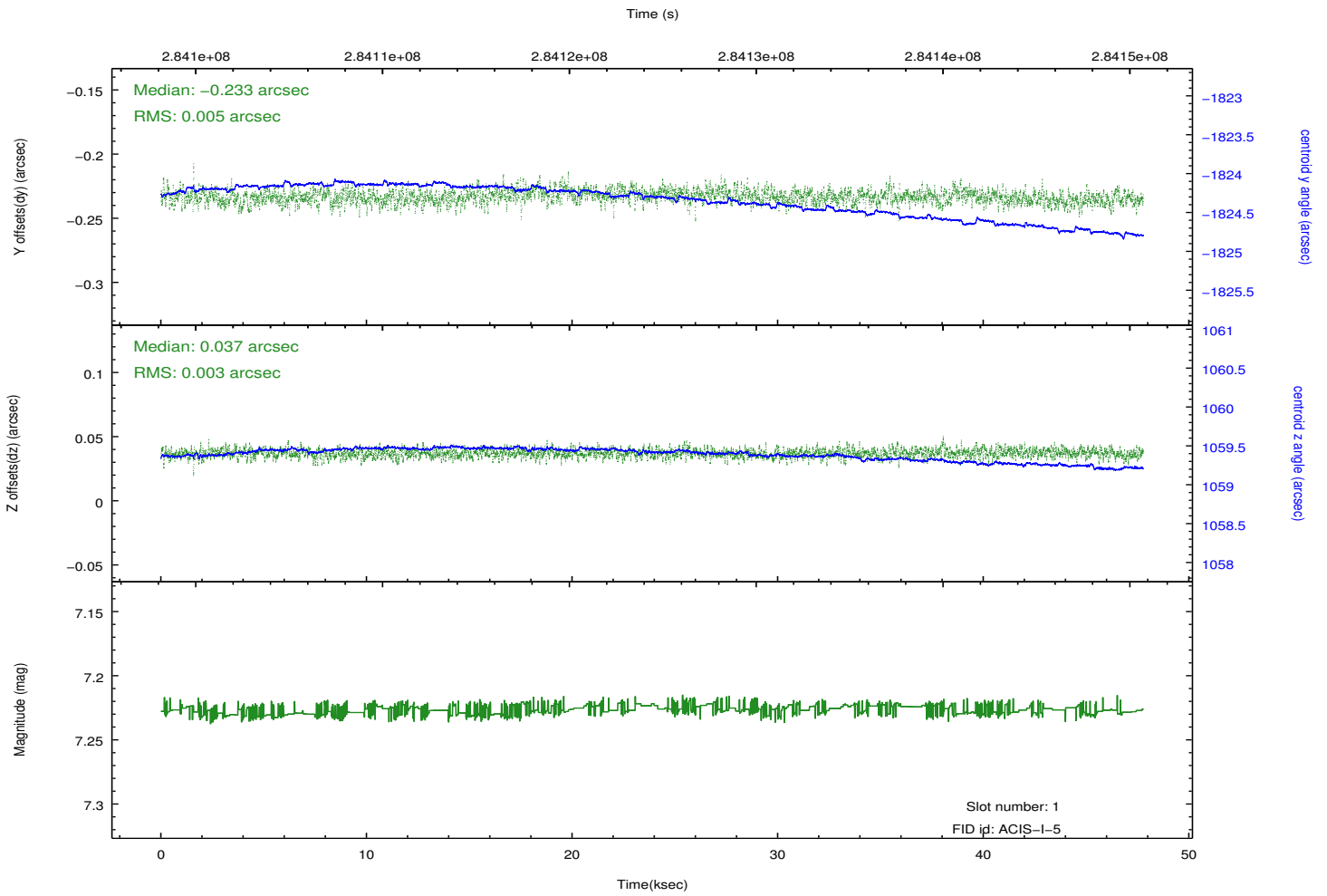
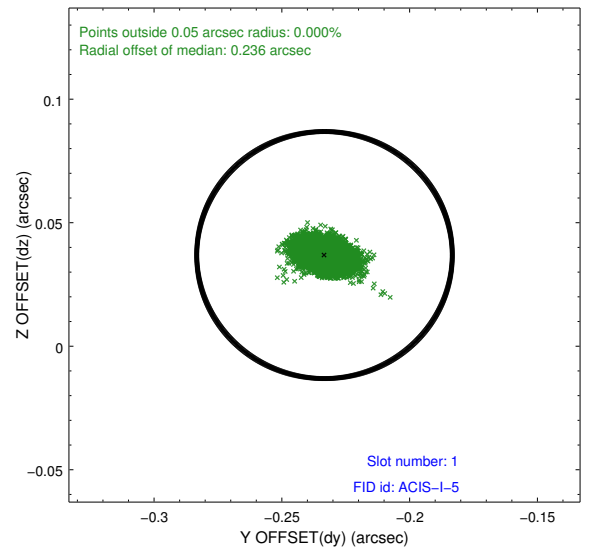
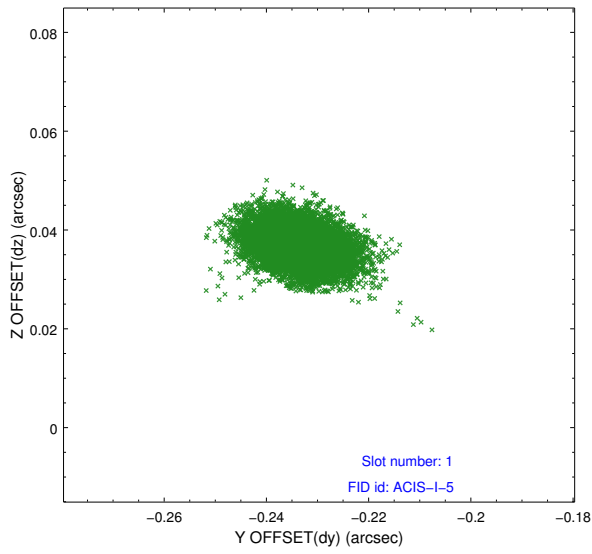


2.5 FID Slots

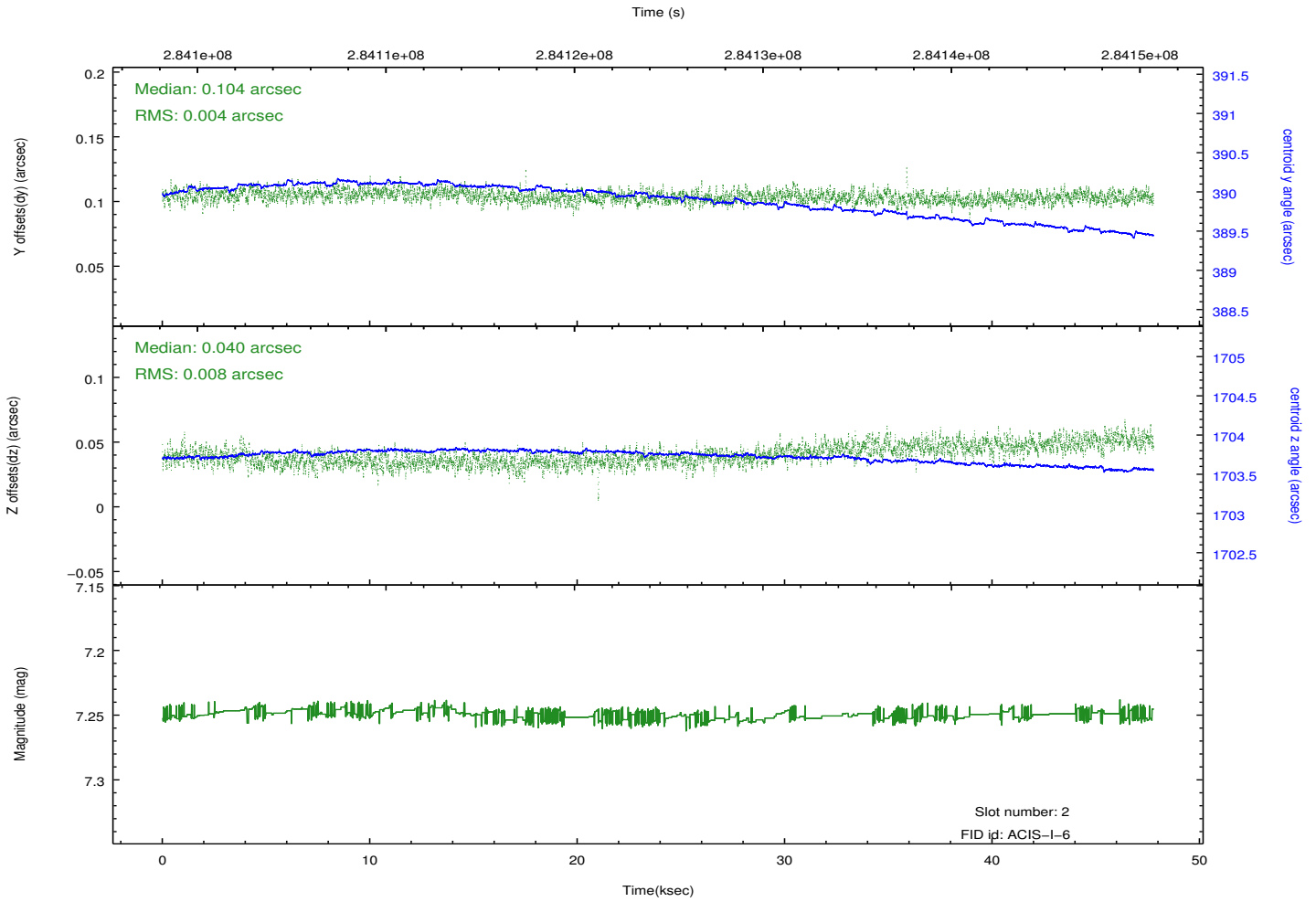
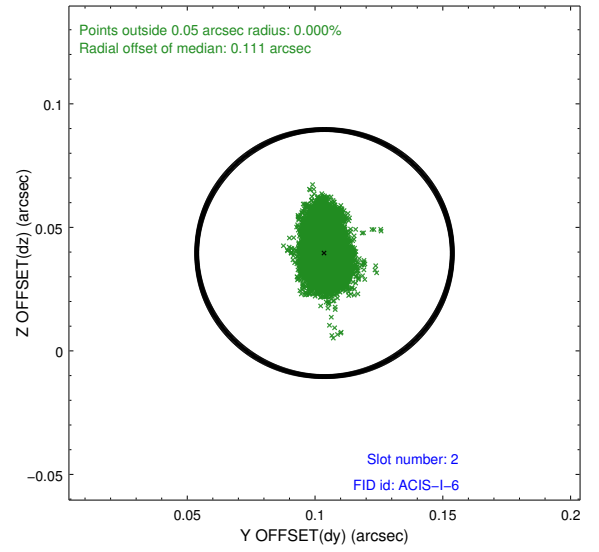
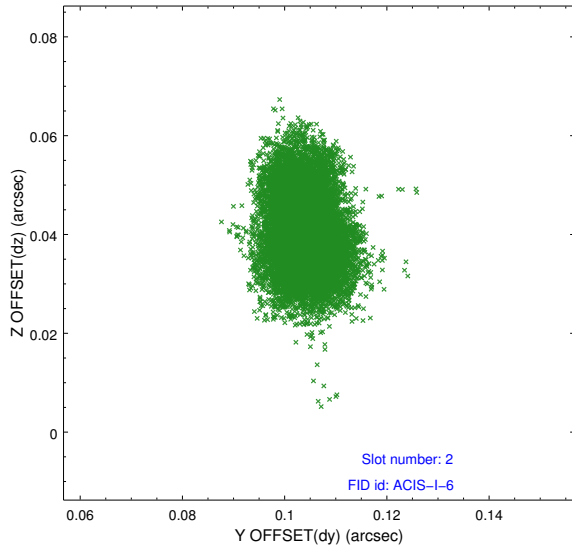
2.5.1 Slot 0



2.5.2 Slot 1



2.5.3 Slot 2



A Summary

A.1 Status

V&V Scientist	Jen Lauer
V&V Date (YYYY-MM-DD)	2012.04.19
V&V Edition	1
V&V Disposition and Status	OK
V&V Charge Time	47.0271588

A.2 Comments

Preferred roll constraint met.