

V&V Reference Report

L2 ASCDS Version : 8.4.4

Observation 9308 - L2 Version 2
Chandra X-Ray Center

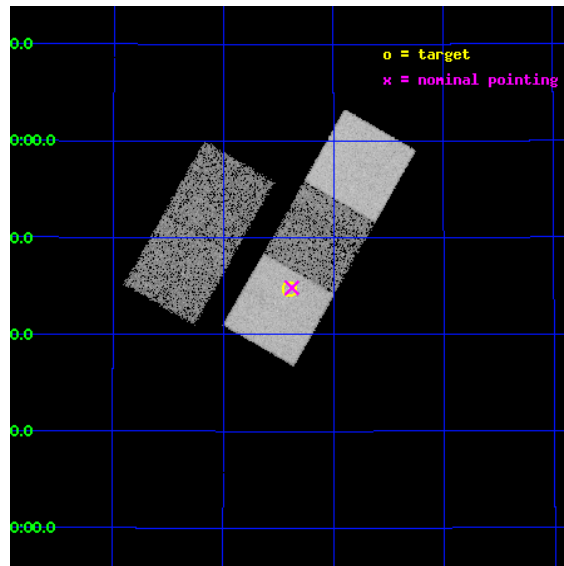
L2 Processing Date : May 8 2012

Contents

1	Front	2
2	OBI	3
2.1	OBI	3
2.1.1	Images	3
2.1.2	Bias	3
2.1.3	Parameters	4
2.1.4	Events	4
2.2	Compared Parameters	5
2.3	Aspect	6
2.4	Star Slots	9
2.4.1	Slot 3	9
2.4.2	Slot 4	10
2.4.3	Slot 5	11
2.4.4	Slot 6	12
2.4.5	Slot 7	13
2.5	FID Slots	14
2.5.1	Slot 0	14
2.5.2	Slot 1	15
2.5.3	Slot 2	16
A	Summary	17
A.1	Status	17
A.2	Comments	17

1 Front

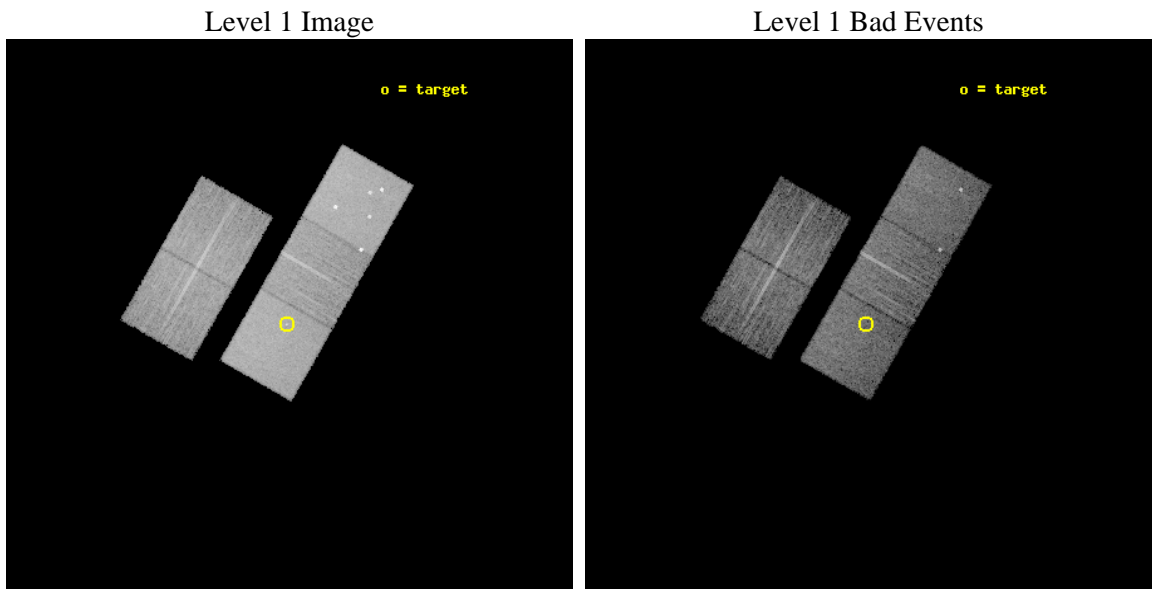
seq_num	701748	Sequence number
obs_id	9308	Observation id
title	Towards a Complete Sample: 3CR Extragalactic Radio Sources with $z < 0.3$	Proposal title
observer	Dr. Daniel Harris	Principal investigator
object	3C223.1	Source name
dtcycle	0	
cycle	P	events from which exps? Prim/Second/Both
ra_targ	145.35	Observer's specified target RA [deg]
dec_targ	39.744889	Observer's specified target Dec [deg]
ra_nom	145.3444722122	Nominal RA [deg]
dec_nom	39.747238877424	Nominal Dec [deg]
roll_nom	119.7565759469	Nominal Roll [deg]
revision	2	Processing version of data
ontime	8032.1000617743	Sum of GTIs [s]
livetime	7927.1547613211	Livetime [s]
ontime2	8032.1000617743	Sum of GTIs [s]
ontime3	8032.1000617743	Sum of GTIs [s]
ontime5	8032.1000617743	Sum of GTIs [s]
ontime6	8032.1000617743	Sum of GTIs [s]
ontime7	8032.1000617743	Sum of GTIs [s]
l2events	118063	Number of level 2 events



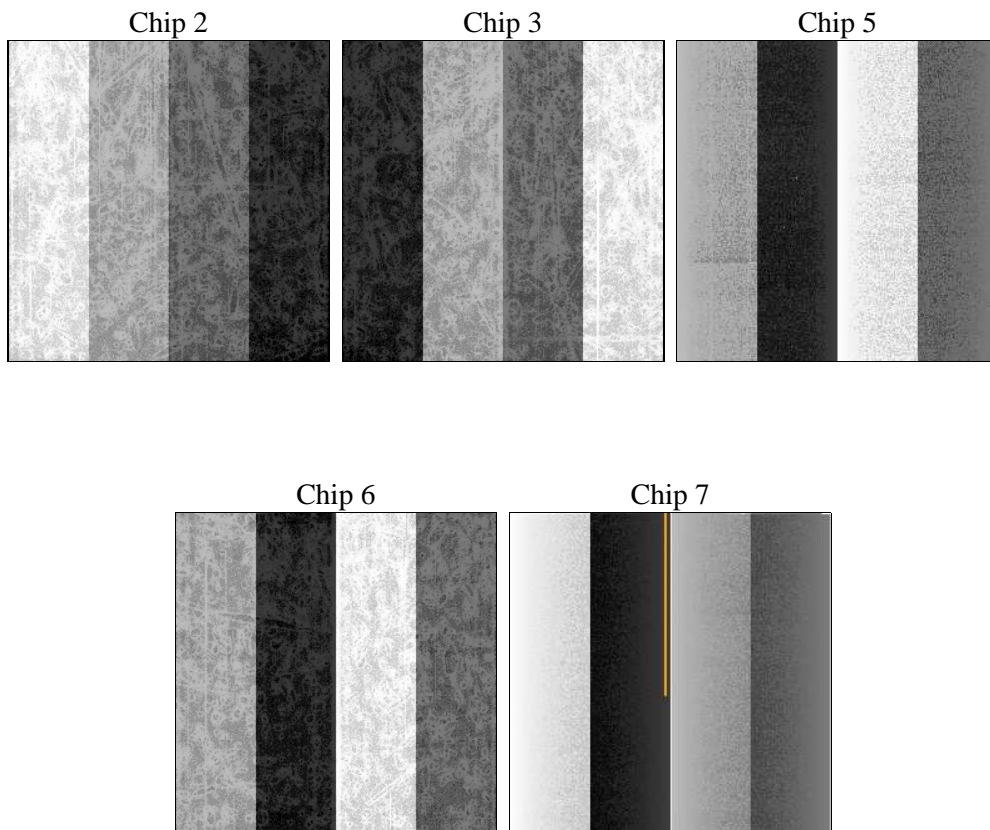
2 OBI

2.1 OBI

2.1.1 Images



2.1.2 Bias



2.1.3 Parameters

obi_num	0	Obi number	sched_exp_time	8000.000000	[s] Scheduled observation exposure time
ascdsver	8.4.4	Processing system revision	ontime	8032.1000617743	Sum of GTIs [s]
caldbver	4.4.9	 	ontime2	8032.1000617743	Sum of GTIs [s]
date	2012-05-08T02:13:39	Date and time of file creation	ontime3	8032.1000617743	Sum of GTIs [s]
revision	2	Processing version of data	ontime5	8032.1000617743	Sum of GTIs [s]
			ontime6	8032.1000617743	Sum of GTIs [s]
			ontime7	8032.1000617743	Sum of GTIs [s]
			l1events	453263	Number of level 1 events

2.1.4 Events

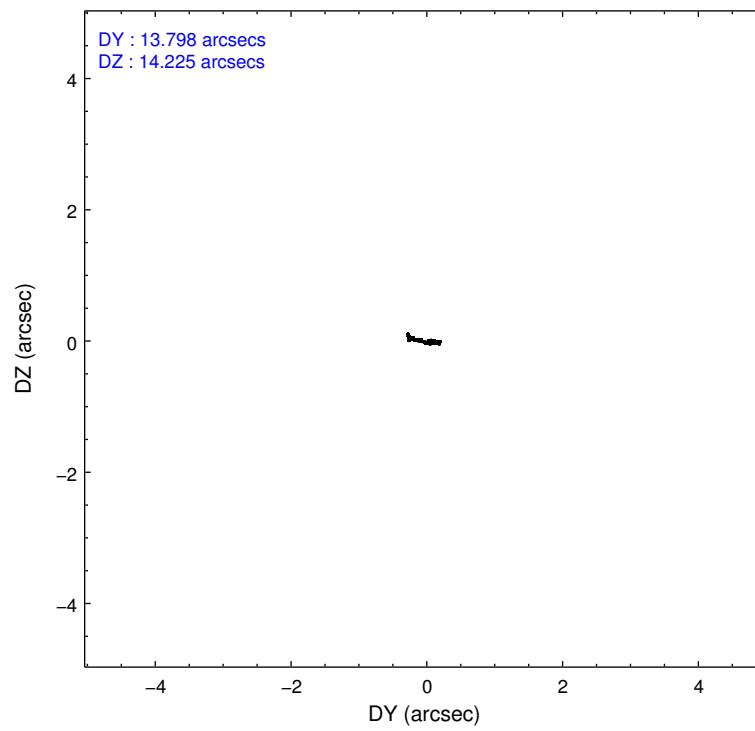
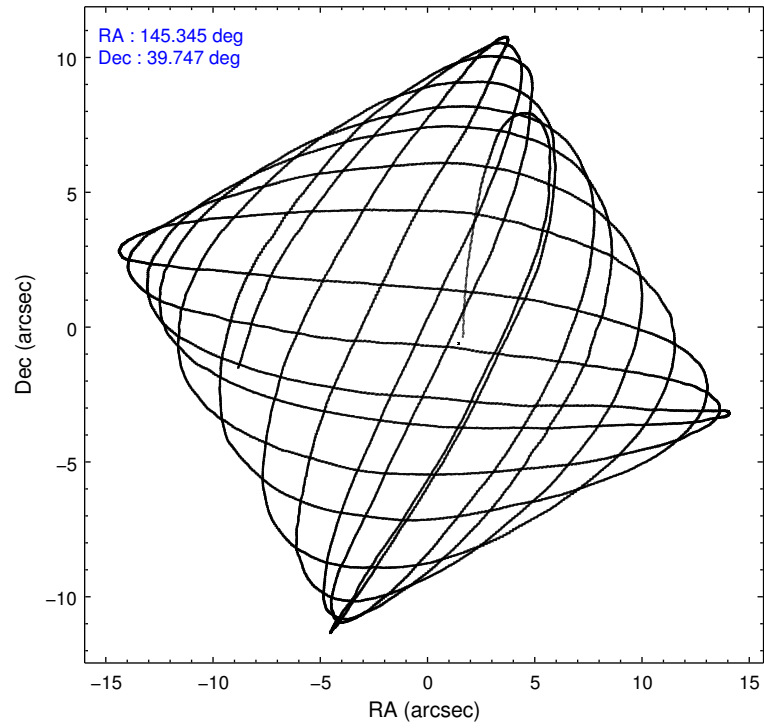
	ccd 2	ccd 3	ccd 5	ccd 6	ccd 7
level 1 events	74580	71884	123833	77213	105753
rejected events	65628	63099	64831	67882	61504
rejected %	87%	87%	52%	87%	58%

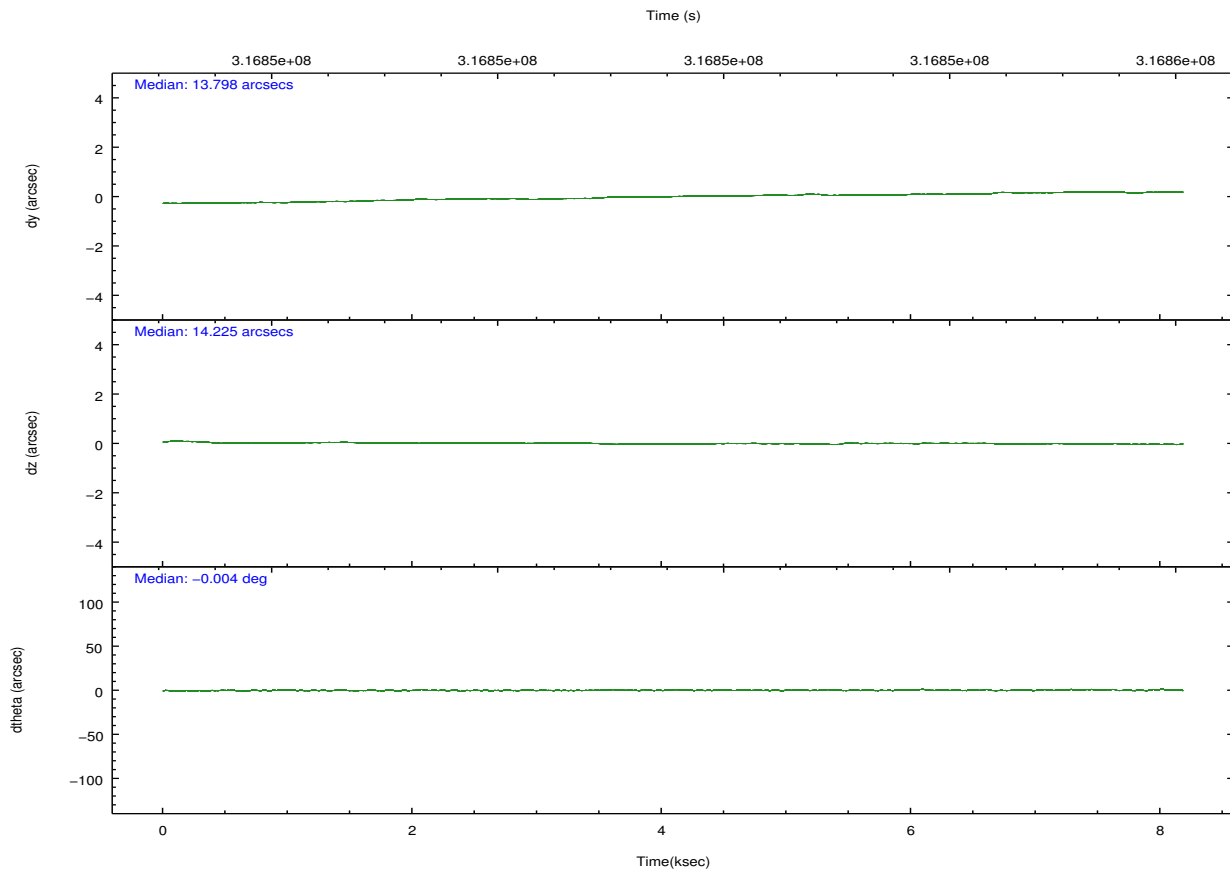
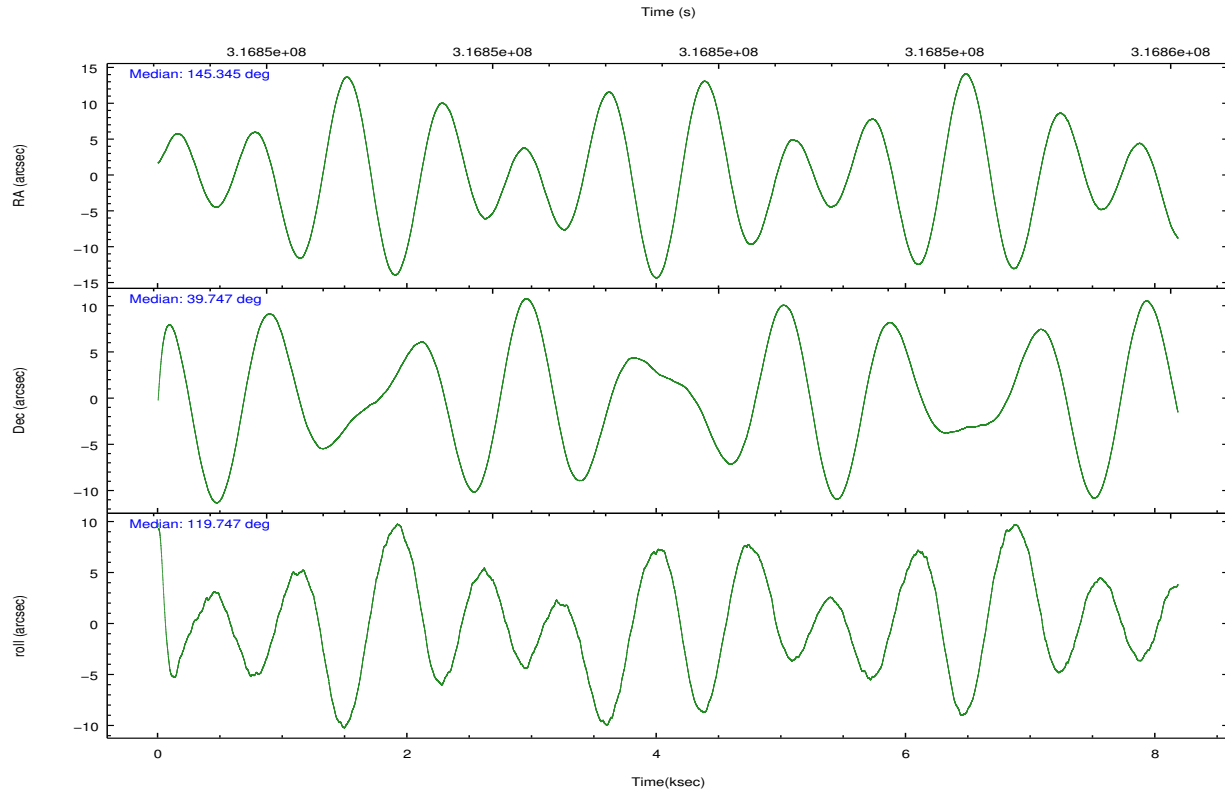
	ccd 2	ccd 3	ccd 5	ccd 6	ccd 7
grade 0 events	3900	3810	7685	3600	3887
	5%	5%	6%	4%	3%
grade 1 events	67	48	373	36	96
	0%	0%	0%	0%	0%
grade 2 events	1881	1709	17559	2102	9005
	2%	2%	14%	2%	8%
grade 3 events	870	860	2147	880	3791
	1%	1%	1%	1%	3%
grade 4 events	844	834	2213	842	3731
	1%	1%	1%	1%	3%
grade 5 events	3040	3432	8698	3649	9768
	4%	4%	7%	4%	9%
grade 6 events	1462	1576	29420	1915	23856
	1%	2%	23%	2%	22%
grade 7 events	62516	59615	55738	64189	51619
	83%	82%	45%	83%	48%

2.2 Compared Parameters

Parameter	Planned	Actual	Parameter	Planned	Actual
Instrument	ACIS	ACIS	Obspar format version number	7	7
Detector	ACIS-23567	ACIS-23567	Obspar file type	PREDICTED	ACTUAL
Grating	NONE	NONE	Obspar update status	NONE	UPDATED
Data mode	VFAINT	VFAINT	CCD I0 on	N	N
Observation mode	POINTING	POINTING	CCD I1 on	N	N
[deg] Pointing RA	145.375417	145.3444722122045	CCD I2 on	Y	Y
[deg] Pointing Dec	39.733752	39.7472388774238	CCD I3 on	Y	Y
[deg] Pointing Roll	119.580138	119.7565759469034	CCD S0 on	N	N
[mm] SIM focus pos	-0.684267	-0.6828225247311905	CCD S1 on	O1	Y
[mm] SIM defocus	0	0.001444936568705701	CCD S2 on	Y	Y
[mm] SIM translation stage pos	-190.132523	-190.1425803651734	CCD S3 on	Y	Y
[mm] SIM translation stage offset	0	0.01005778216563158	CCD S4 on	N	N
[s] Observation start time (MET)	316847641.184000	316846707.70402	CCD S5 on	N	N
Observation start date	2008-01-16T05:12:56	2008-01-16T04:58:27	Number of optional ACIS chips dropped	0	0
[s] Observation end time (MET)	316855641.184000	316855892.72947	On-chip summing requested	N	N
Observation end date	2008-01-16T07:26:16	2008-01-16T07:31:32	Subarray requested	NONE	NONE
Read mode	TIMED	TIMED	Alternating exposures requested	N	N
			[s] Primary exposure time	0.000000	3.1

2.3 Aspect



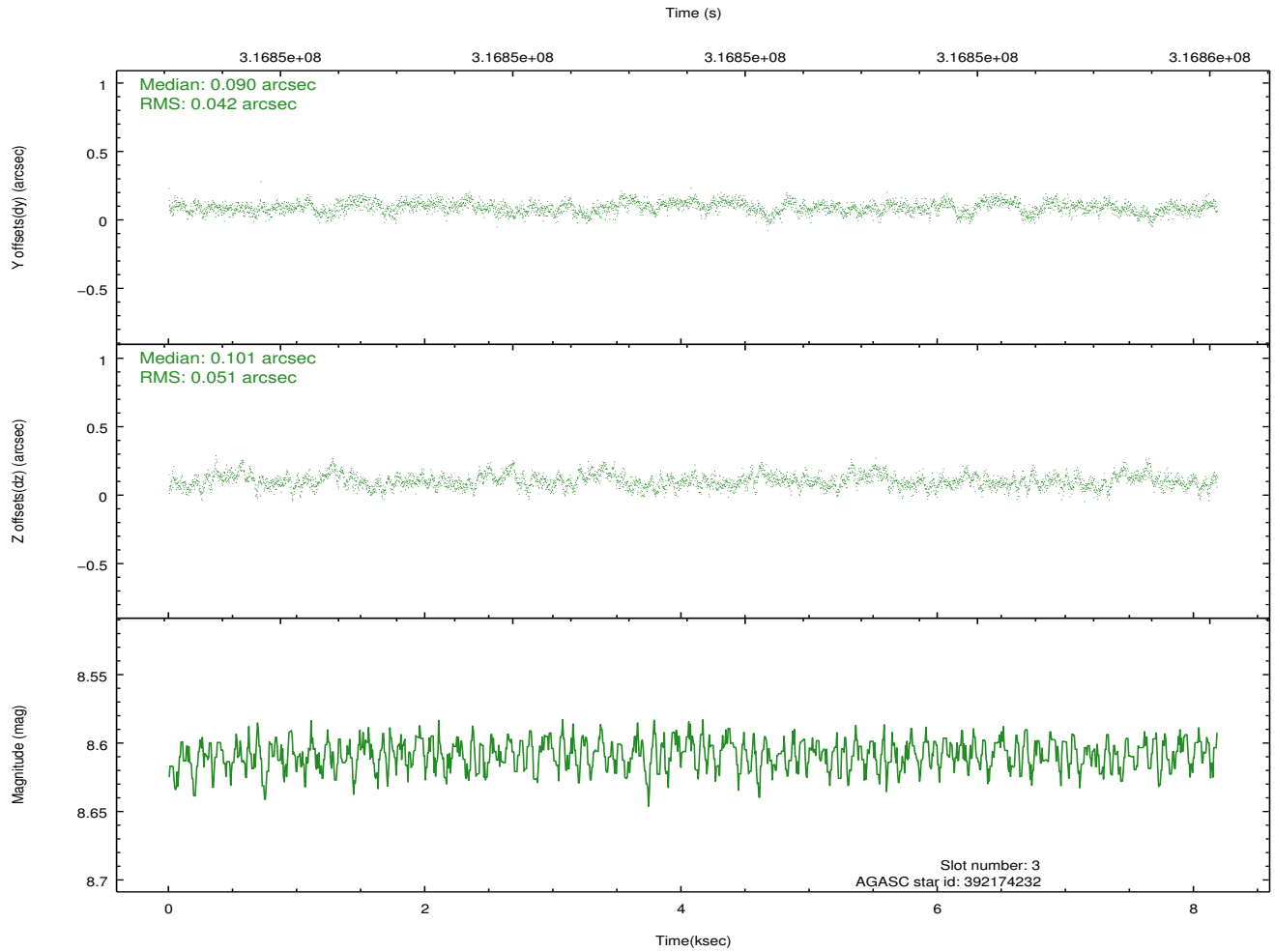
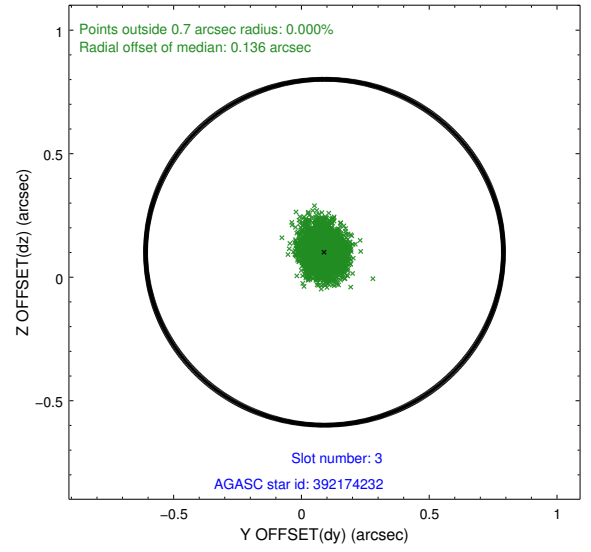
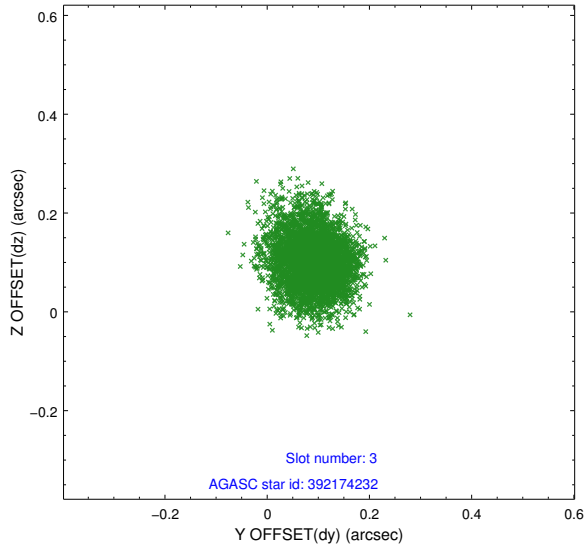


Slot Statistics

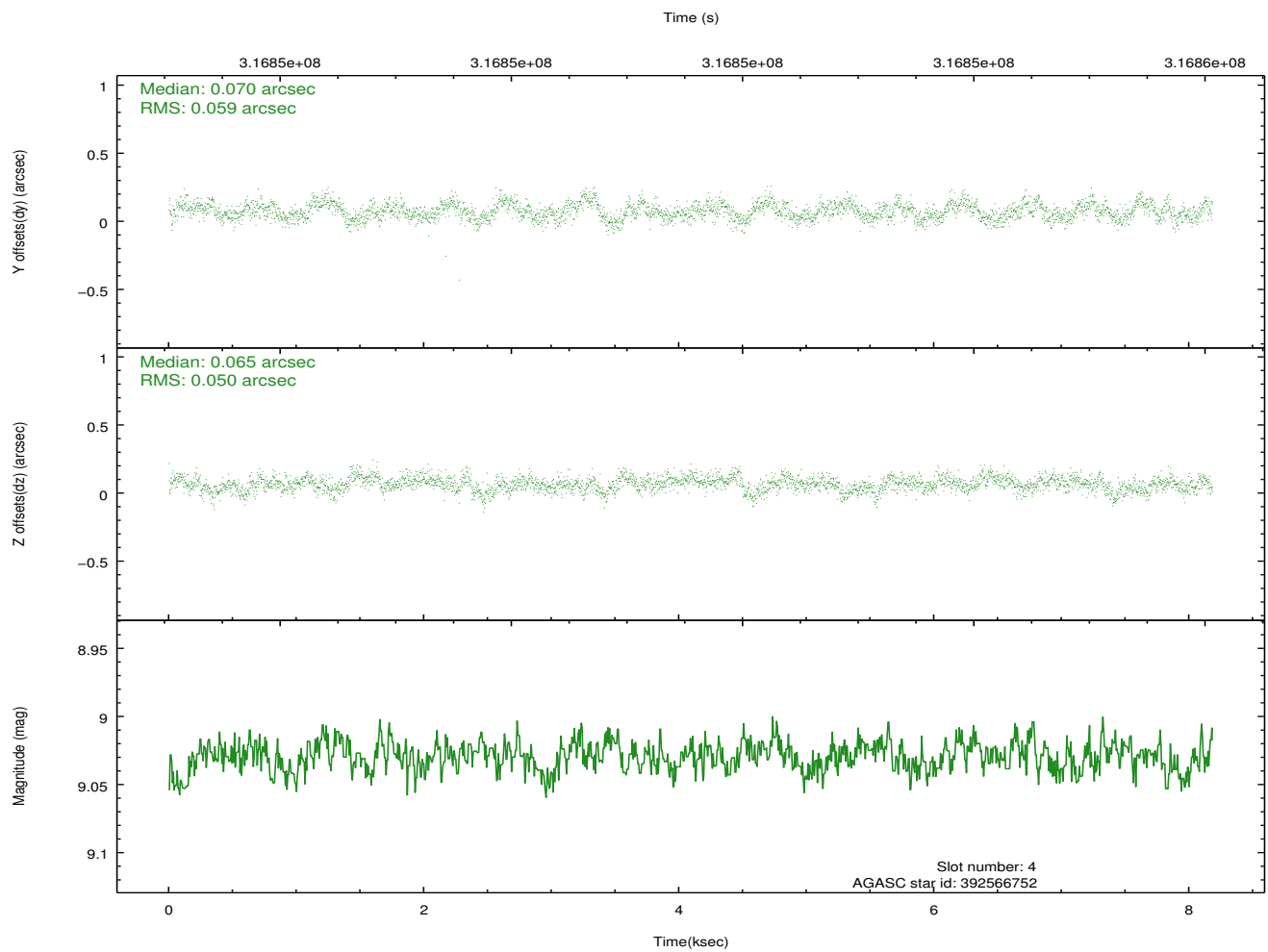
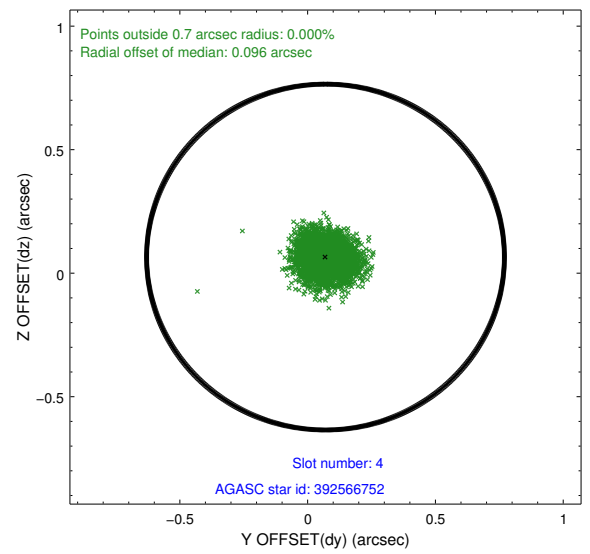
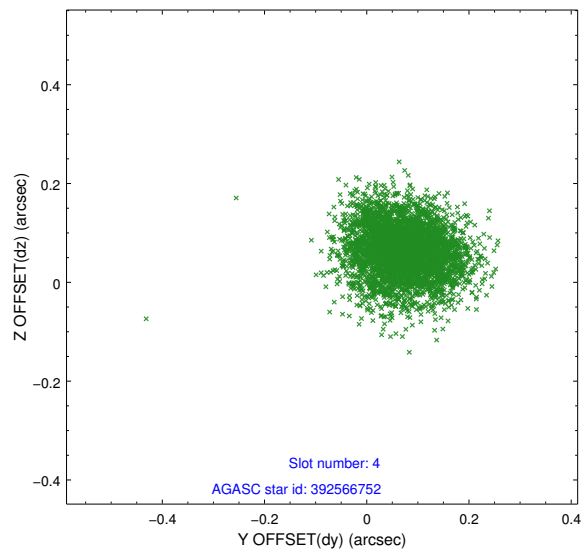
slot	status	id	mag	n_pts	med_dy	med_dz	dr1	dr2	ra	dec	mean_y	mean_z
0	FID	ACIS-S-2	7.10	1996	-0.056	-0.046	0.009	0.014	0.000000	0.000000	-766.76	-1735.58
1	FID	ACIS-S-4	7.19	1996	0.178	0.040	0.008	0.014	0.000000	0.000000	2146.43	172.29
2	FID	ACIS-S-5	7.22	1996	-0.152	0.015	0.006	0.010	0.000000	0.000000	-1818.83	166.70
3	GUIDE	392174232	8.61	3990	0.090	0.101	0.070	0.115	146.112490	39.925394	-396.61	-2114.04
4	GUIDE	392566752	9.03	3988	0.070	0.065	0.083	0.133	145.203634	40.068645	1282.49	-183.69
5	GUIDE	392571640	9.22	3990	0.033	0.022	0.095	0.152	145.417844	40.229821	1496.15	-982.47
6	GUIDE	392178040	9.35	3988	0.000	-0.216	0.104	0.168	144.558421	39.554173	565.58	2285.74
7	GUIDE	392563872	8.08	3990	-0.192	0.028	0.053	0.087	145.347375	40.496551	2426.42	-1287.62

2.4 Star Slots

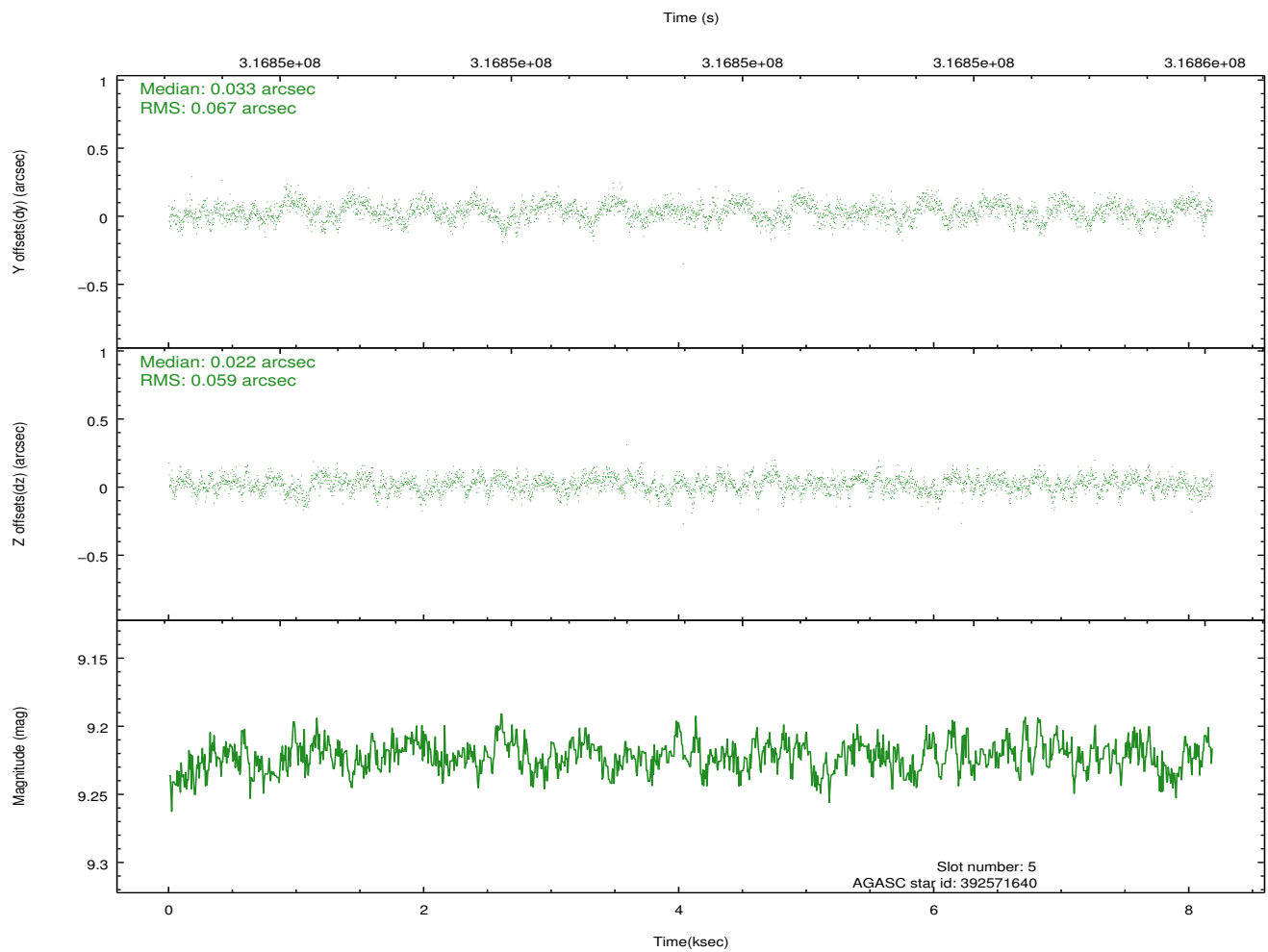
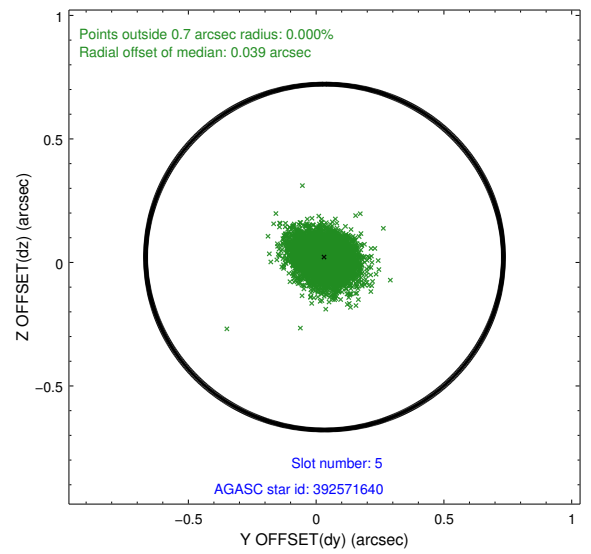
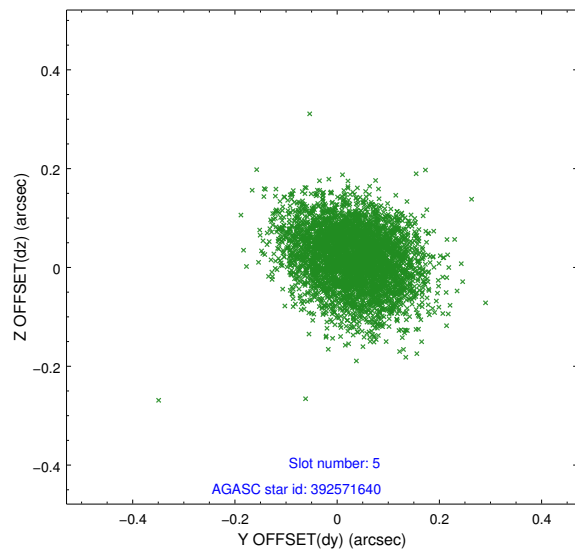
2.4.1 Slot 3



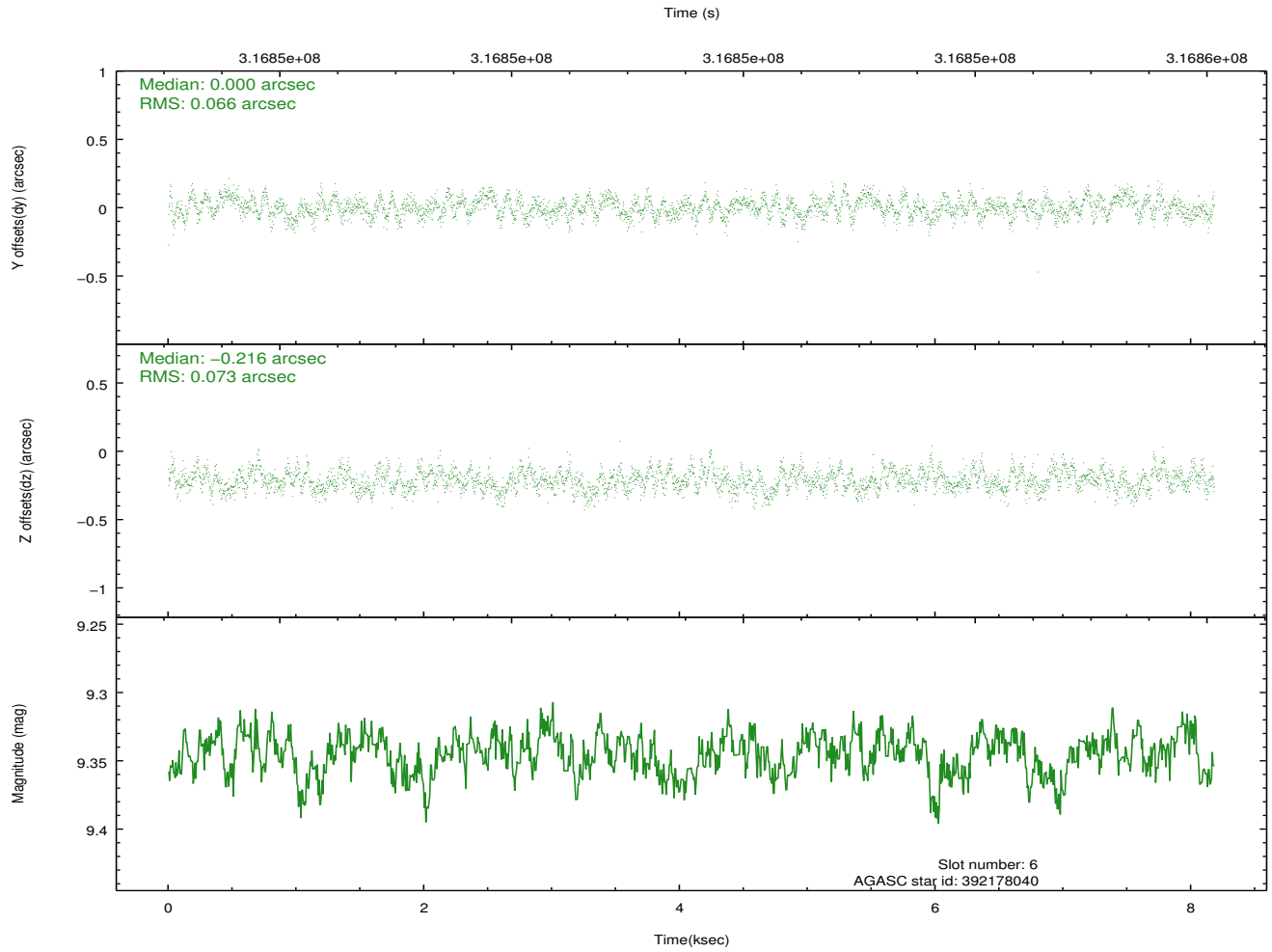
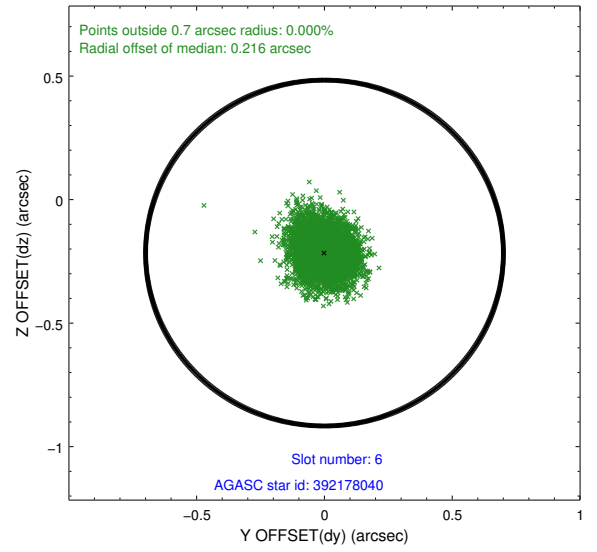
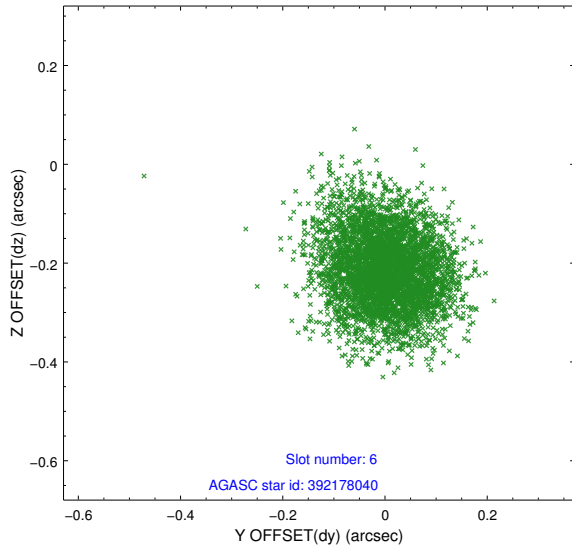
2.4.2 Slot 4



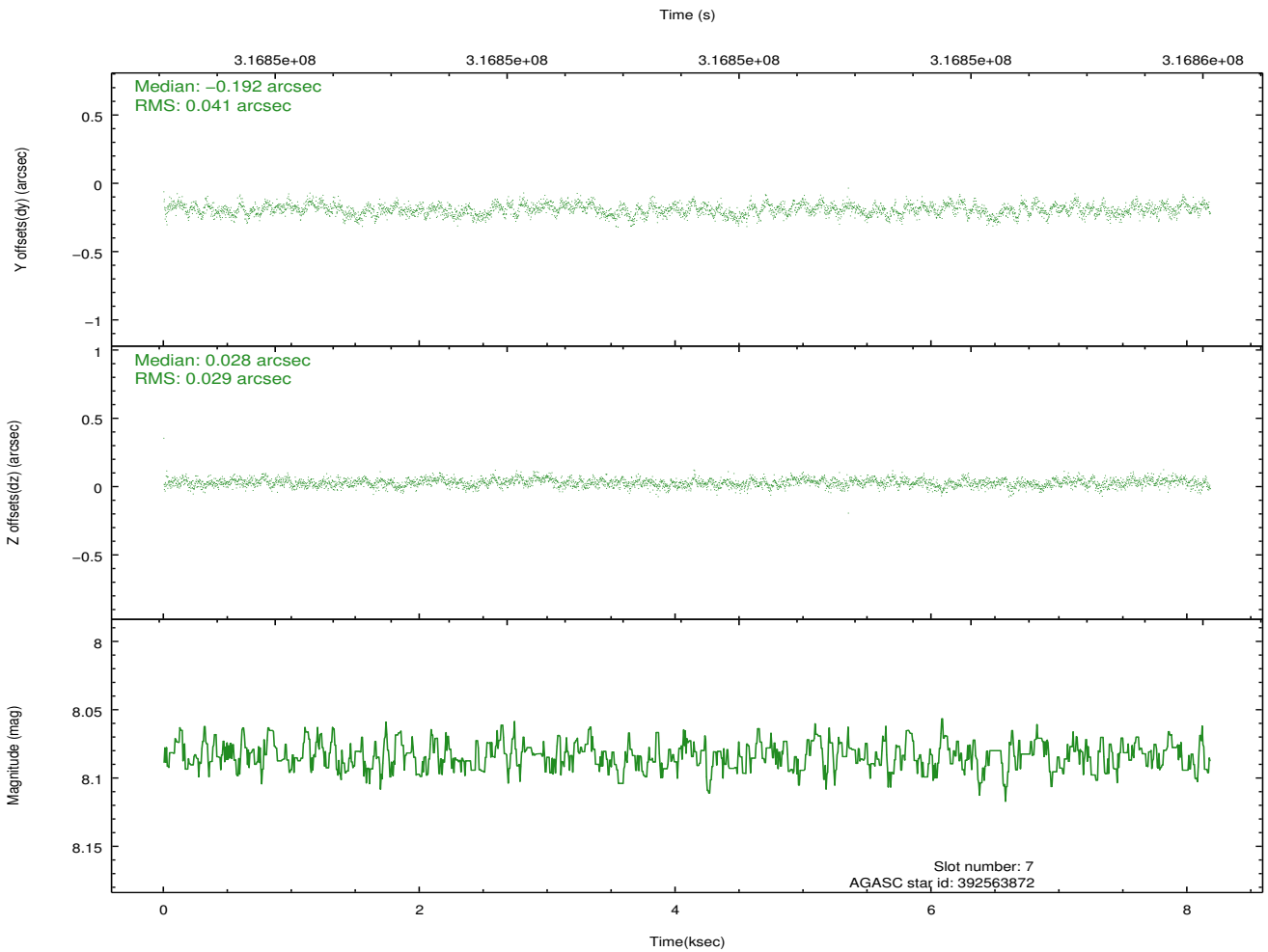
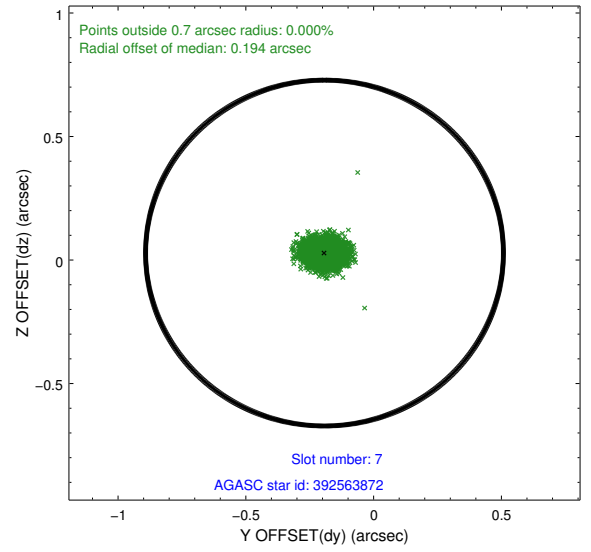
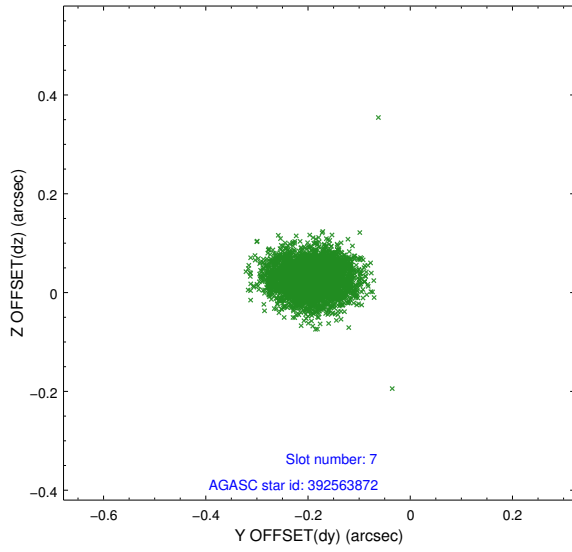
2.4.3 Slot 5



2.4.4 Slot 6

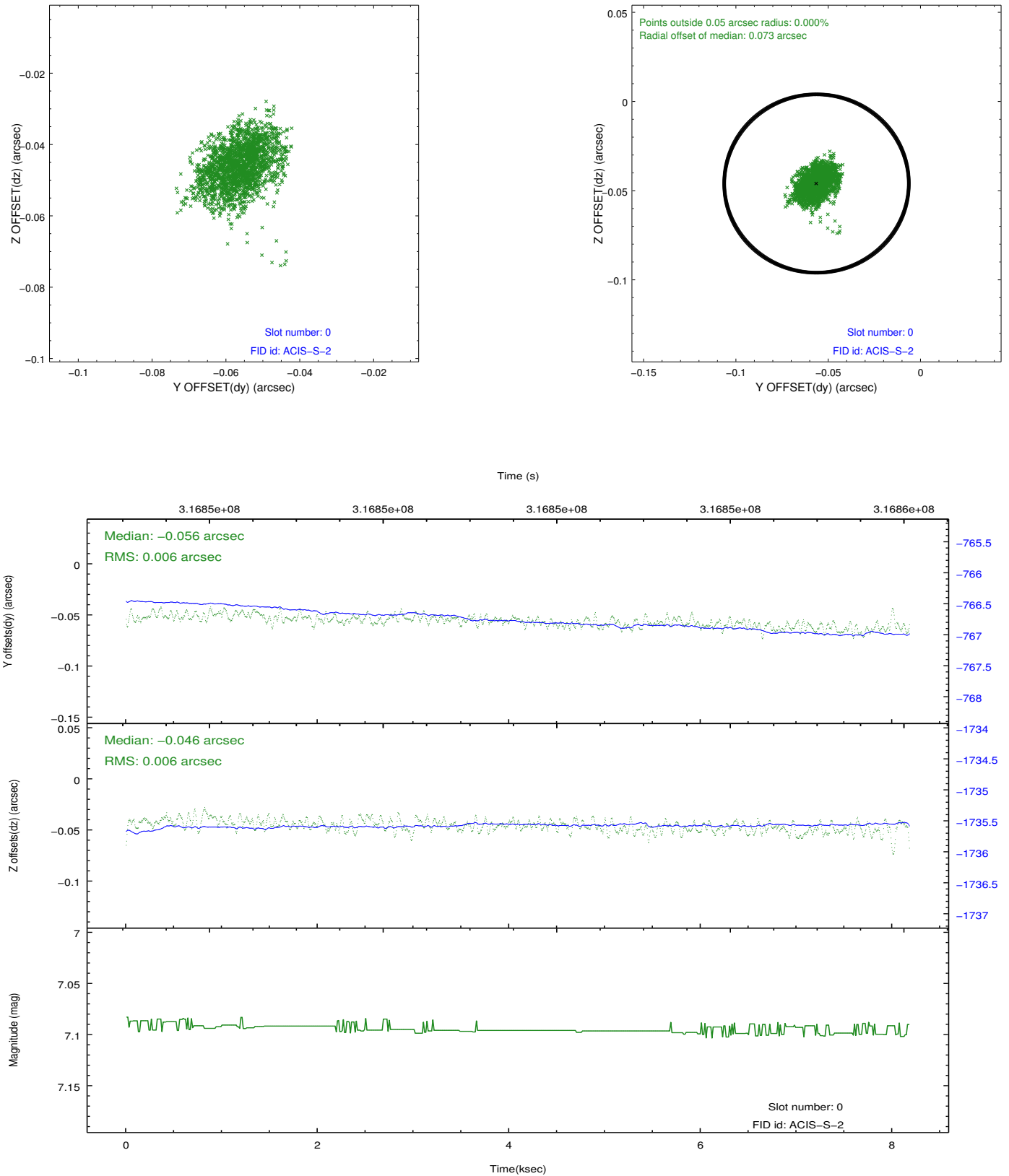


2.4.5 Slot 7

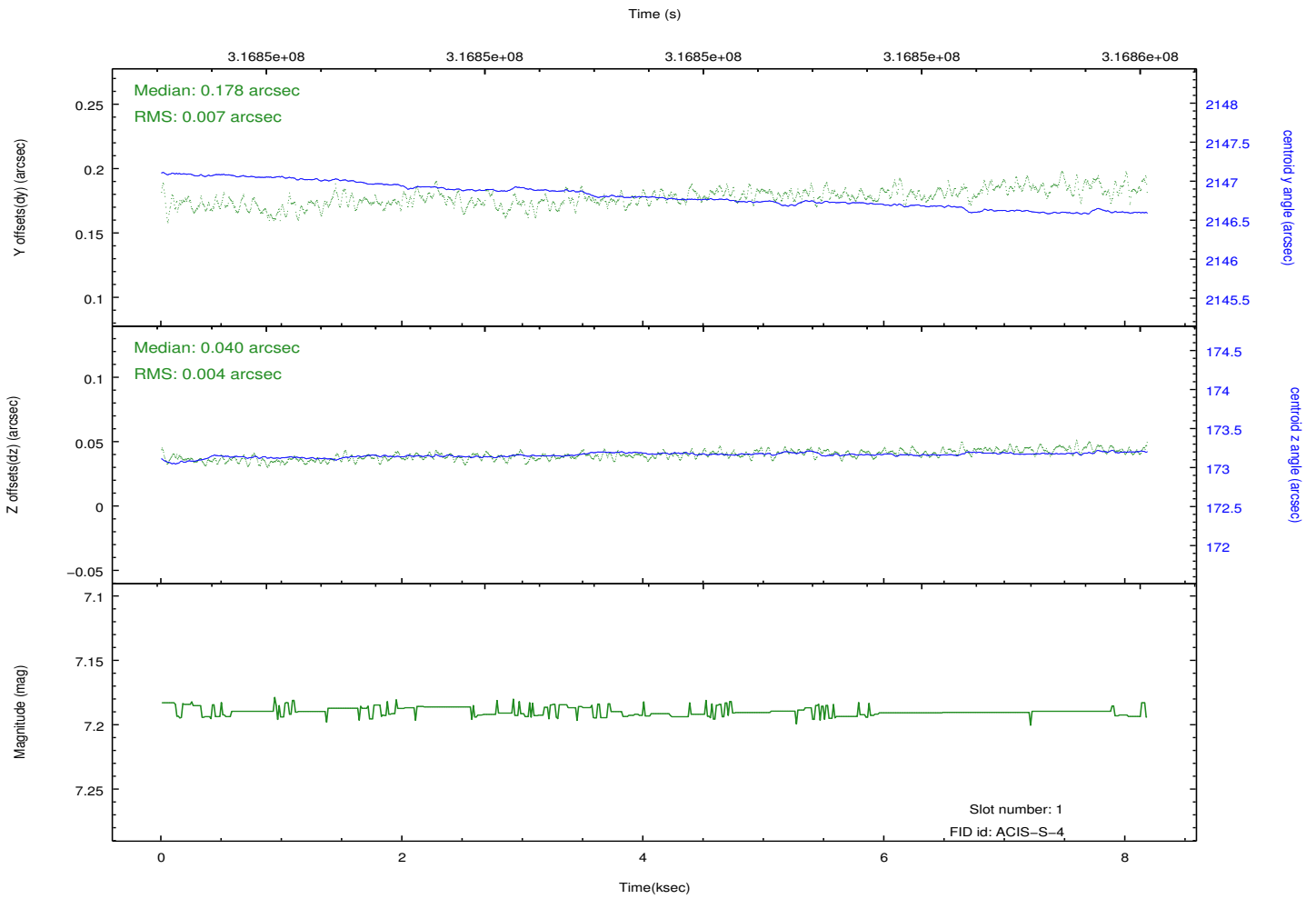
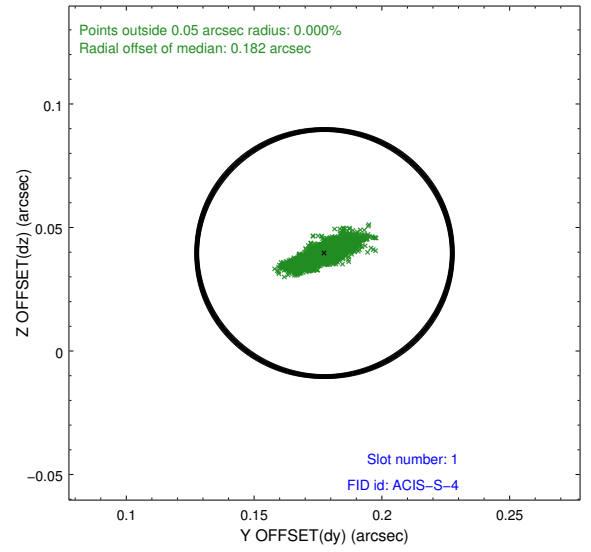
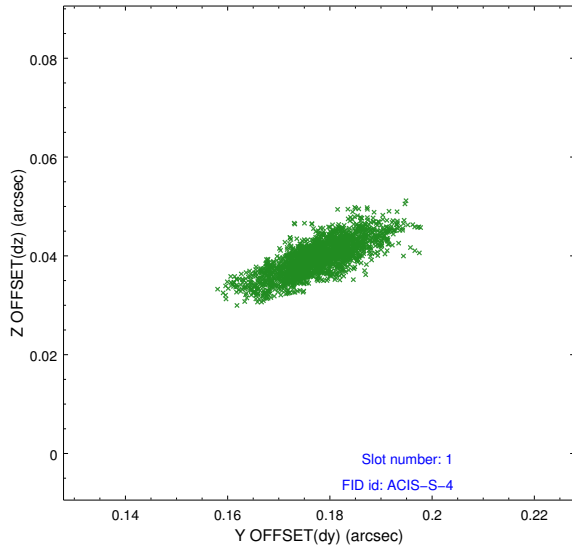


2.5 FID Slots

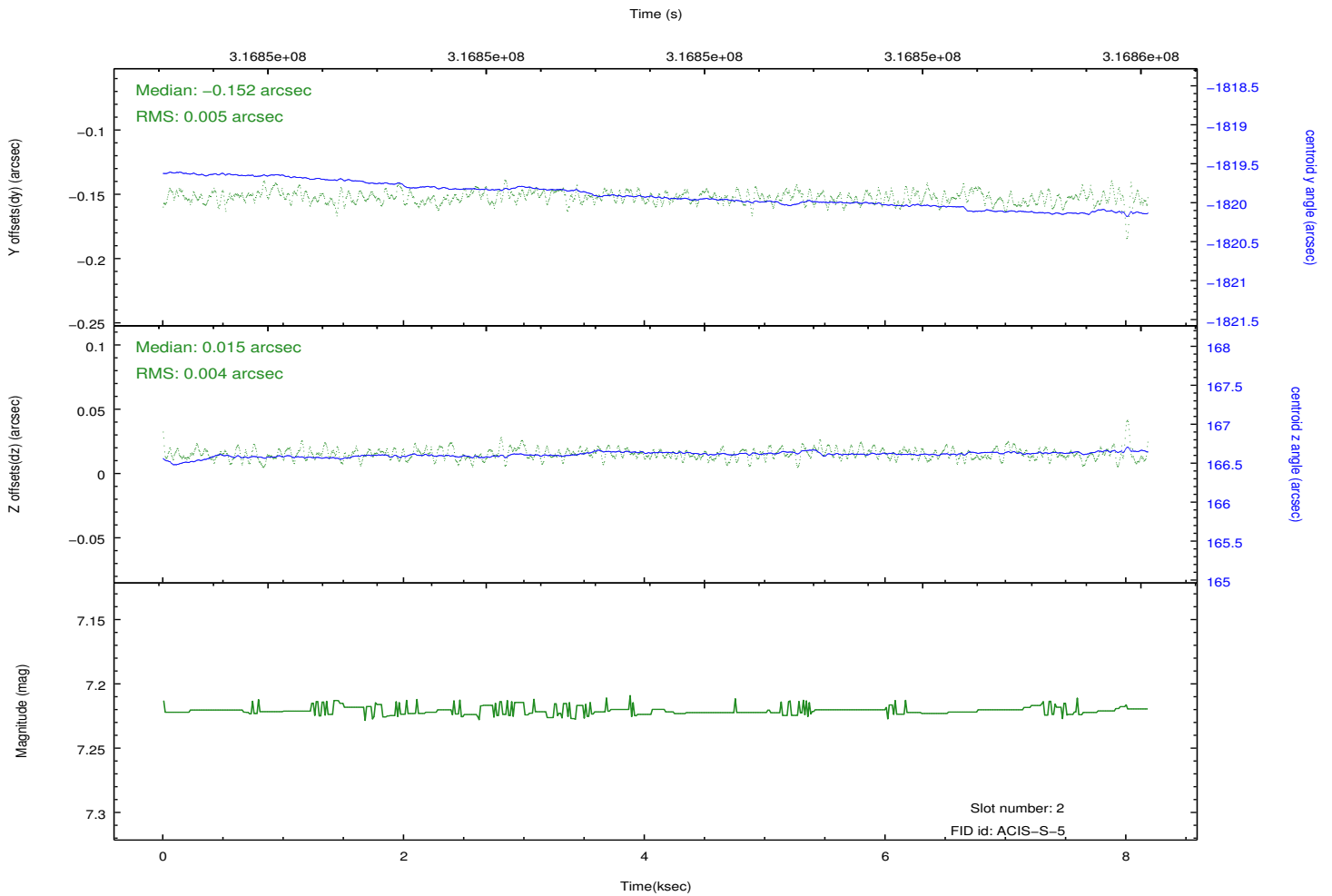
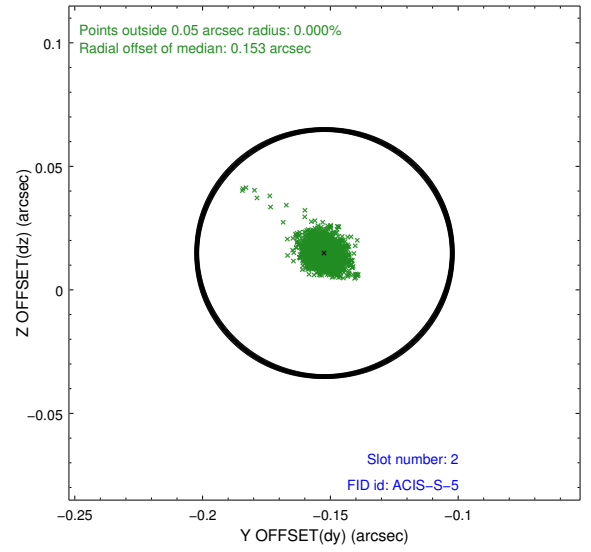
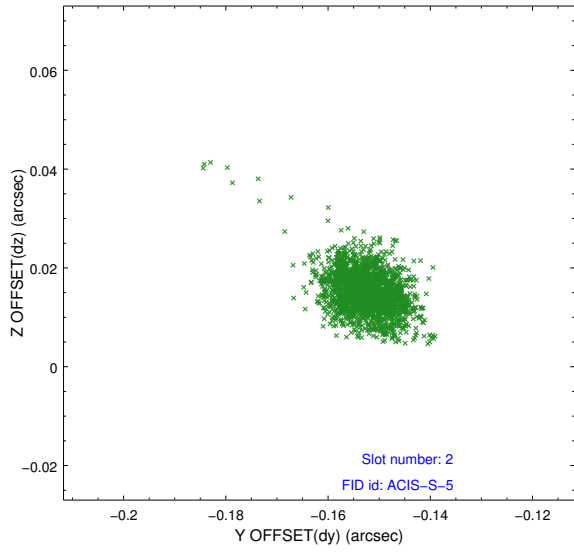
2.5.1 Slot 0



2.5.2 Slot 1



2.5.3 Slot 2



A Summary

A.1 Status

V&V Scientist	Jen Lauer
V&V Date (YYYY-MM-DD)	2012.05.10
V&V Edition	1
V&V Disposition and Status	OK
V&V Charge Time	8.03210006

A.2 Comments