

V&V Reference Report

L2 ASCDS Version : 8.4.5

Observation 948 - L2 Version 4
Chandra X-Ray Center

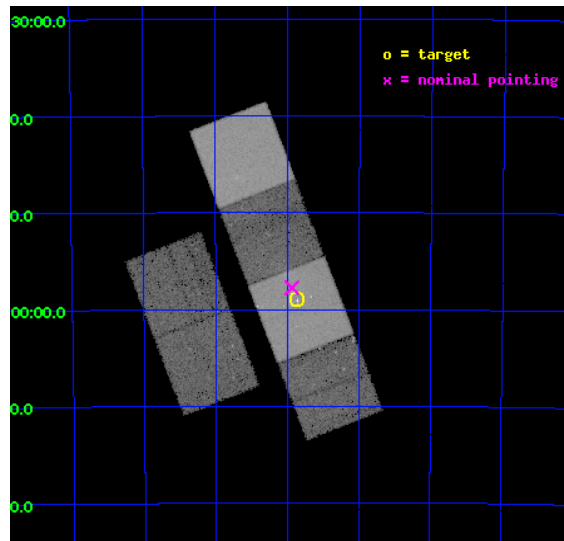
L2 Processing Date : Aug 27 2012

Contents

1	Front	2
2	OBI	3
2.1	OBI	3
2.1.1	Images	3
2.1.2	Bias	3
2.1.3	Parameters	4
2.1.4	Events	4
2.2	Compared Parameters	5
2.3	Aspect	6
2.4	Star Slots	9
2.4.1	Slot 3	9
2.4.2	Slot 4	10
2.4.3	Slot 5	11
2.4.4	Slot 7	12
2.5	FID Slots	13
2.5.1	Slot 0	13
2.5.2	Slot 1	14
2.5.3	Slot 2	15
A	Summary	16
A.1	Status	16
A.2	Comments	16

1 Front

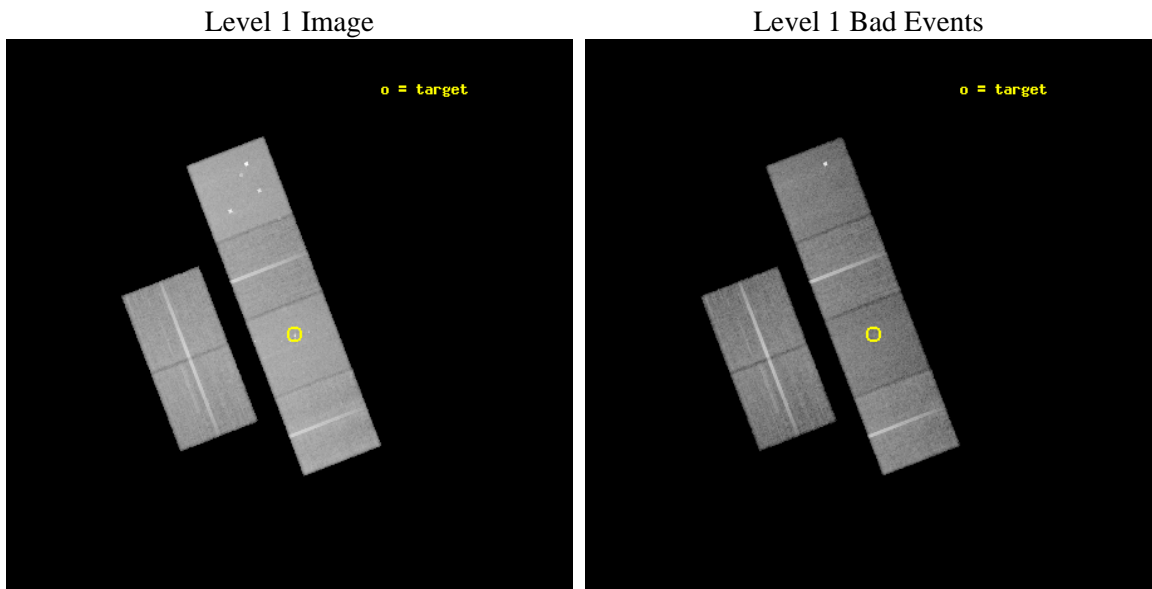
seq_num	300027	Sequence number
obs_id	948	Observation id
title	A STUDY OF THE POPULATIONS OF FAINT X-RAY SOURCES IN GLOBULAR CLUSTERS	Proposal title
observer	Prof. Walter Lewin	Principal investigator
object	NGC 6752	Source name
dtcycle	0	
cycle	P	events from which exps? Prim/Second/Both
ra_targ	287.715833	Observer's specified target RA [deg]
dec_targ	-59.981889	Observer's specified target Dec [deg]
ra_nom	287.73439931306	Nominal RA [deg]
dec_nom	-59.962939887663	Nominal Dec [deg]
roll_nom	68.927335318541	Nominal Roll [deg]
revision	4	Processing version of data
ontime	29844.943191022	Sum of GTIs [s]
livetime	29467.02854987	Livetime [s]
ontime2	29838.502290621	Sum of GTIs [s]
ontime3	29844.820071027	Sum of GTIs [s]
ontime5	29844.902151018	Sum of GTIs [s]
ontime6	29844.86111103	Sum of GTIs [s]
ontime7	29844.943191022	Sum of GTIs [s]
ontime8	29844.779031023	Sum of GTIs [s]
l2events	314119	Number of level 2 events



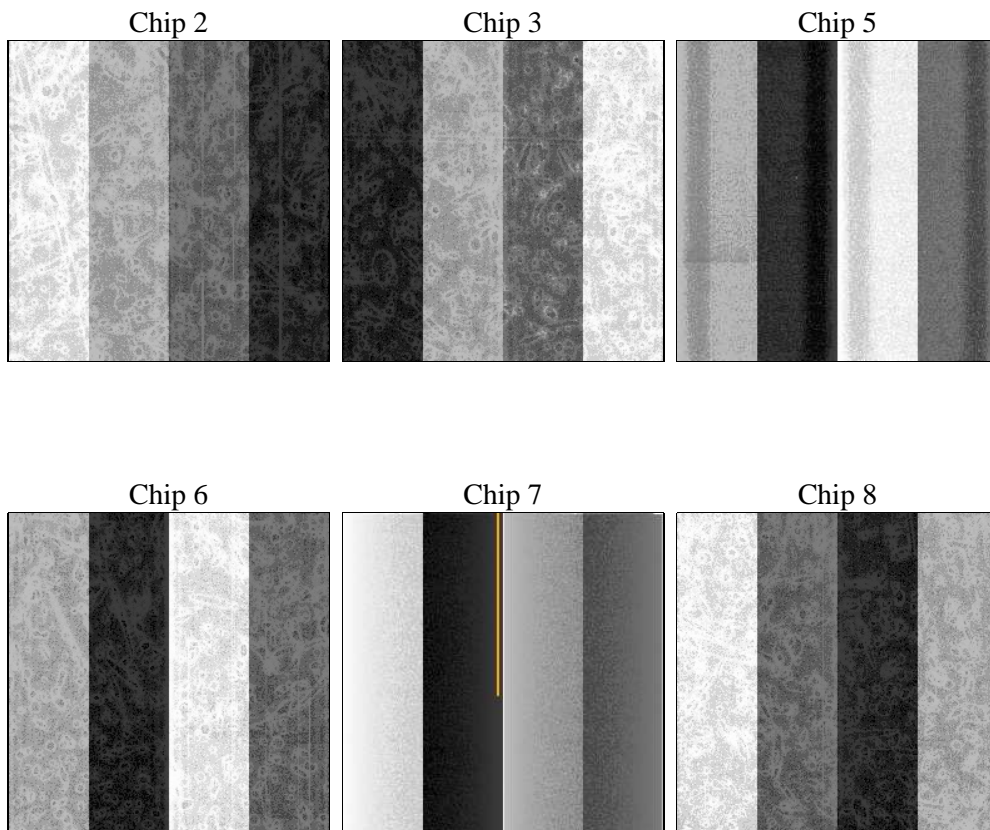
2 OBI

2.1 OBI

2.1.1 Images



2.1.2 Bias



2.1.3 Parameters

obi_num	1	Obi number	sched_exp_time	30000.000000	[s] Scheduled observation exposure time
ascdsver	8.4.5	Processing system revision	ontime	29844.943191022	Sum of GTIs [s]
caldbver	4.5.1.1	 	ontime2	29838.502290621	Sum of GTIs [s]
date	2012-08-27T19:15:12	Date and time of file creation	ontime3	29844.820071027	Sum of GTIs [s]
revision	4	Processing version of data	ontime5	29844.902151018	Sum of GTIs [s]
			ontime6	29844.86111103	Sum of GTIs [s]
			ontime7	29844.943191022	Sum of GTIs [s]
			ontime8	29844.779031023	Sum of GTIs [s]
			l1events	1404482	Number of level 1 events

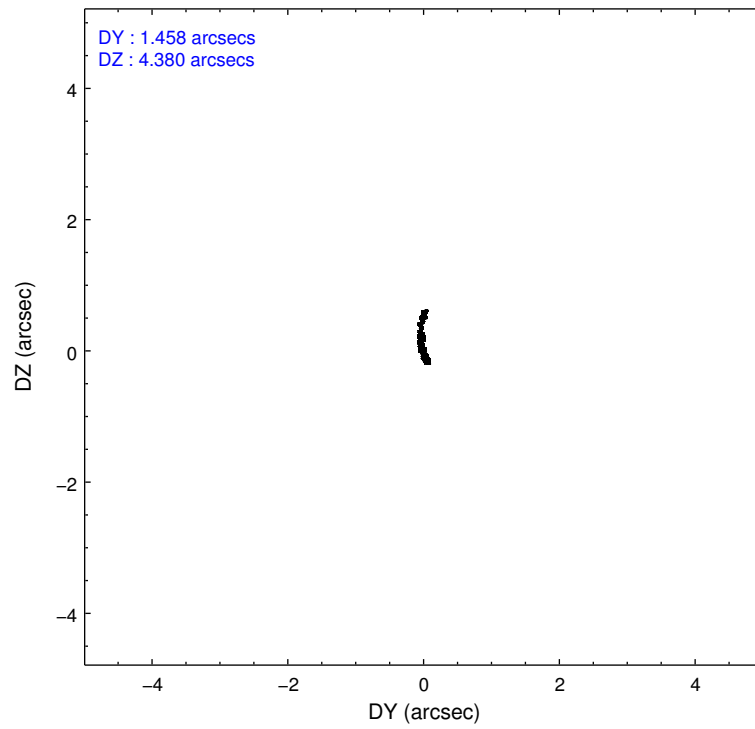
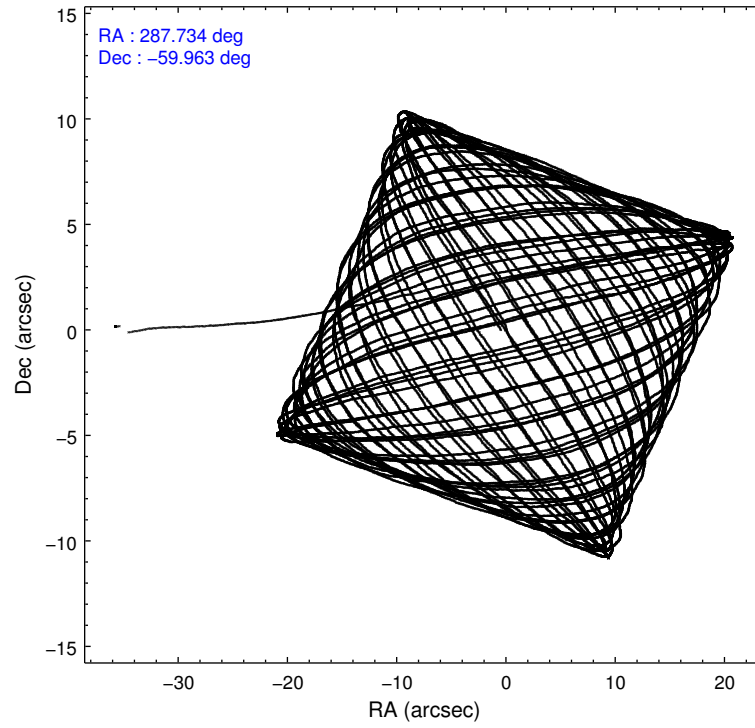
2.1.4 Events

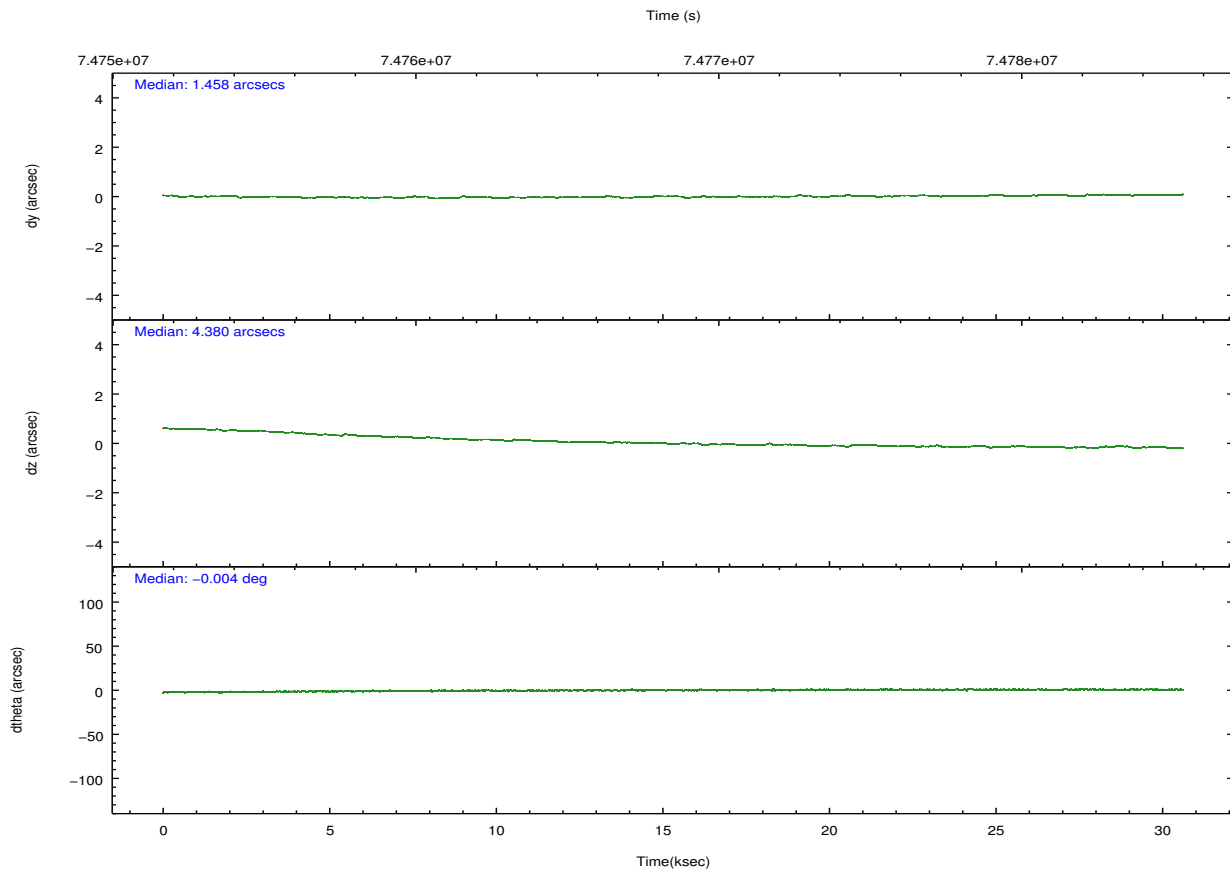
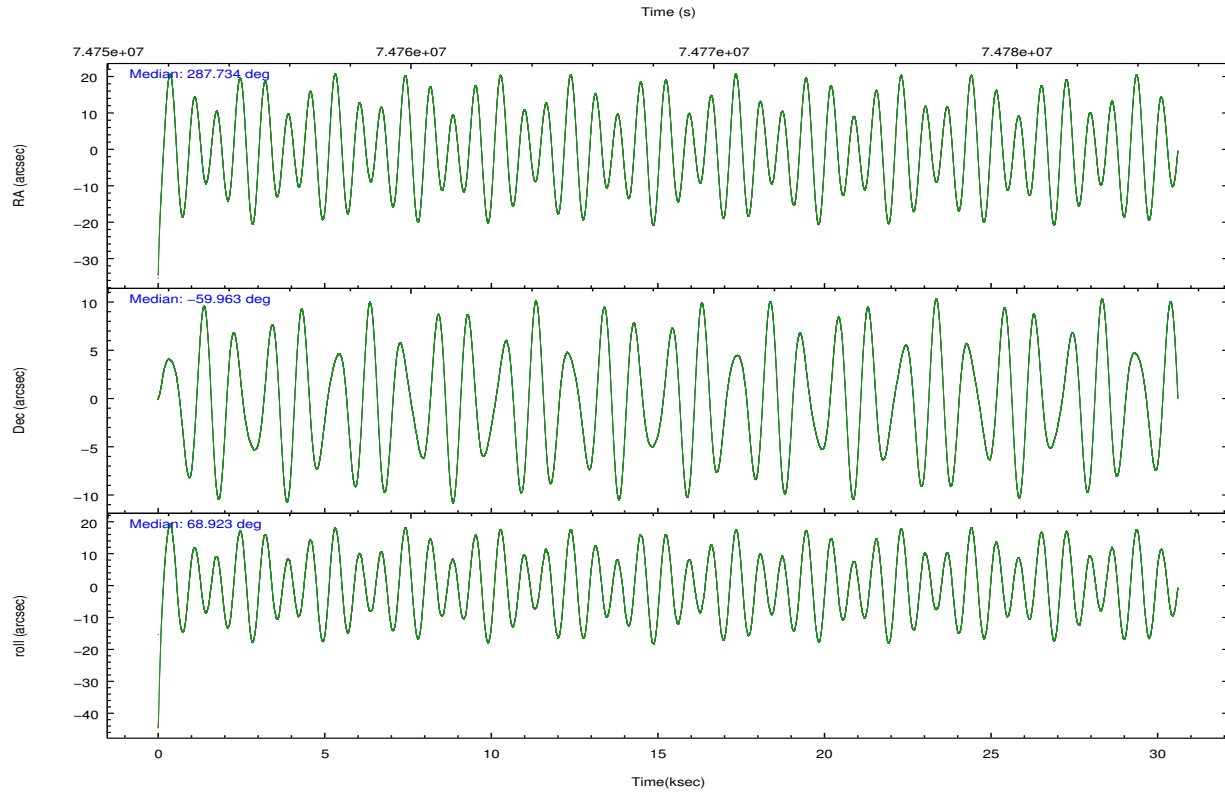
	ccd 2	ccd 3	ccd 5	ccd 6	ccd 7	ccd 8		ccd 2	ccd 3	ccd 5	ccd 6	ccd 7	ccd 8
level 1 events	207153	201145	279946	204818	249527	261893	grade 0 events	9966	10489	19469	11438	13632	18266
rejected events	184125	177815	146419	179457	136602	208751		4%	5%	6%	5%	5%	6%
rejected %	88%	88%	52%	87%	54%	79%	grade 1 events	91	85	337	96	219	156
								0%	0%	0%	0%	0%	0%
							grade 2 events	4889	4508	38857	4849	22703	10808
								2%	2%	13%	2%	9%	4%
							grade 3 events	2131	2164	5949	2300	10545	5930
								1%	1%	2%	1%	4%	2%
							grade 4 events	2091	2234	5635	2363	10595	5368
								1%	1%	2%	1%	4%	2%
							grade 5 events	6260	6749	21843	7398	23035	9594
								3%	3%	7%	3%	9%	3%
							grade 6 events	3952	3941	63631	4420	55462	12792
								1%	1%	22%	2%	22%	4%
							grade 7 events	177773	170975	124225	171954	113336	198979
								85%	85%	44%	83%	45%	75%

2.2 Compared Parameters

Parameter	Planned	Actual	Parameter	Planned	Actual
Instrument	ACIS	ACIS	Obspar format version number	7	7
Detector	ACIS-235678	ACIS-235678	Obspar file type	PREDICTED	ACTUAL
Grating	NONE	NONE	Obspar update status	NONE	UPDATED
Data mode	FAINT	FAINT	Number of optional ACIS chips dropped	0	0
Observation mode	POINTING	POINTING	On-chip summing requested	N	N
[deg] Pointing RA	287.743103	287.7343993130597	Subarray requested	NONE	NONE
[deg] Pointing Dec	-59.990059	-59.96293988766324	Alternating exposures requested	N	N
[deg] Pointing Roll	68.778249	68.92733531854113	[s] Primary exposure time	0.000000	3.2
[mm] SIM focus pos	-0.684267	-0.6828225247311905			
[mm] SIM defocus	0	0.001444936568705701			
[mm] SIM translation stage pos	-190.132523	-190.1400660498719			
[mm] SIM translation stage offset	0	0.00754346686406393			
[s] Observation start time (MET)	74753792.184000	74752625.740879			
Observation start date	2000-05-15T04:55:28	2000-05-15T04:37:05			
[s] Observation end time (MET)	74783792.184000	74784573.45455199			
Observation end date	2000-05-15T13:15:28	2000-05-15T13:29:33			
Read mode	TIMED	TIMED			

2.3 Aspect



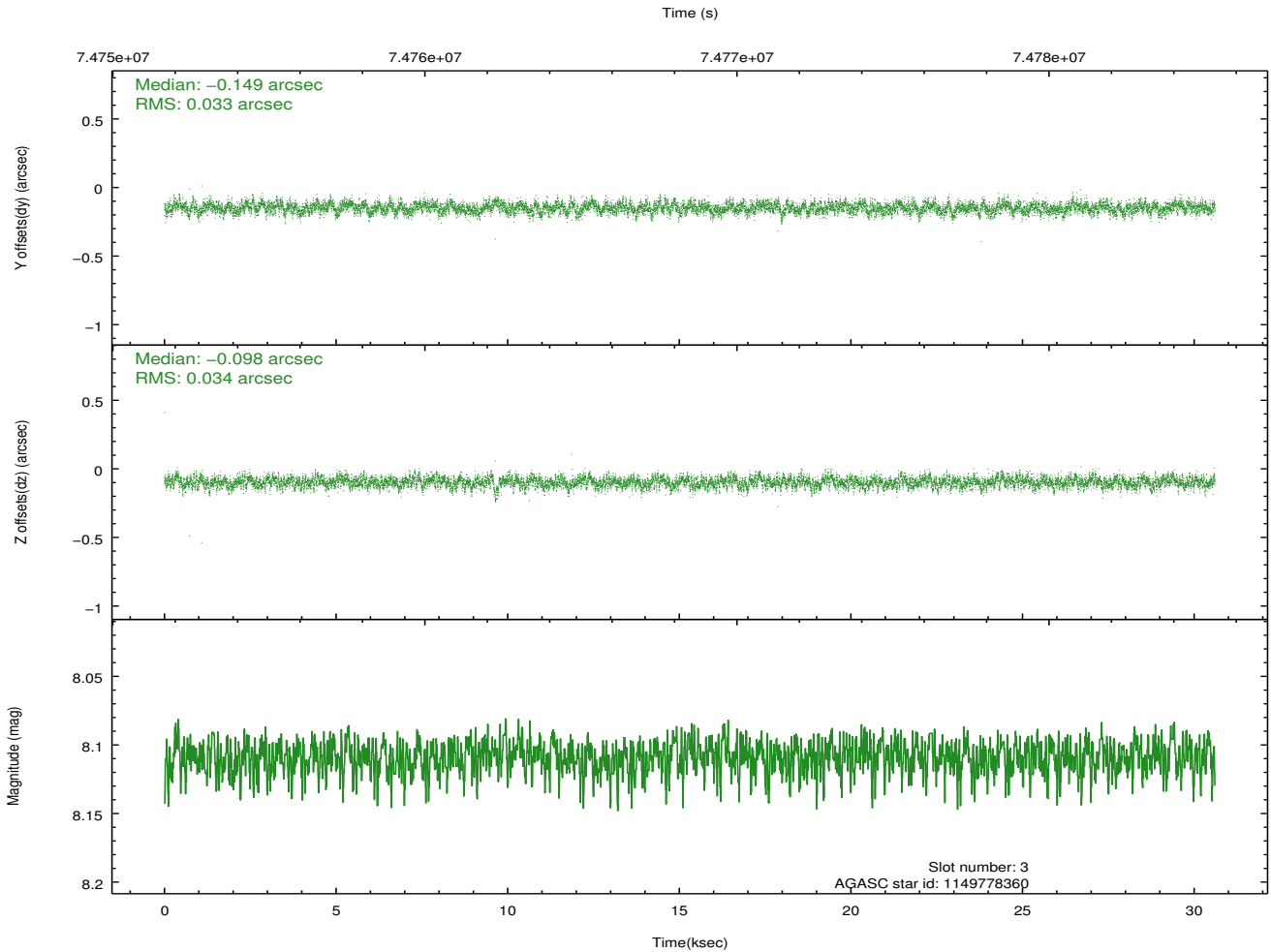
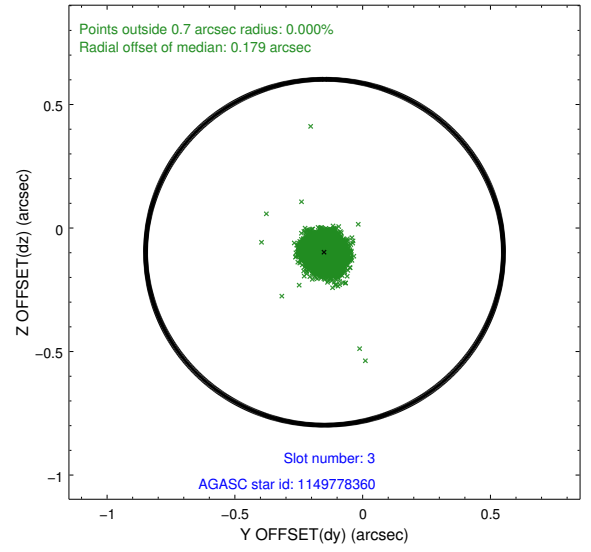
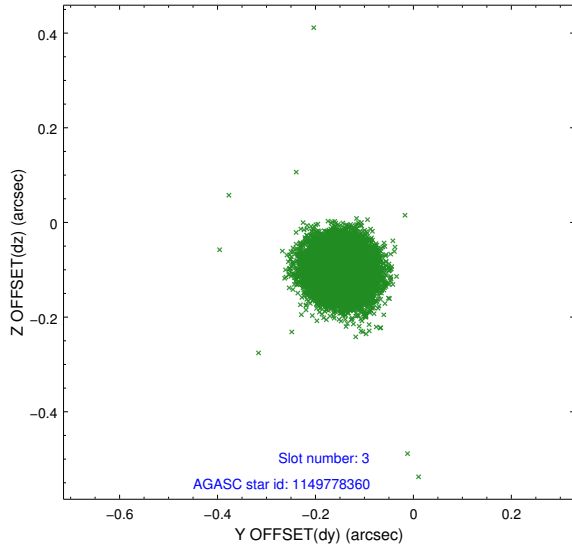


Slot Statistics

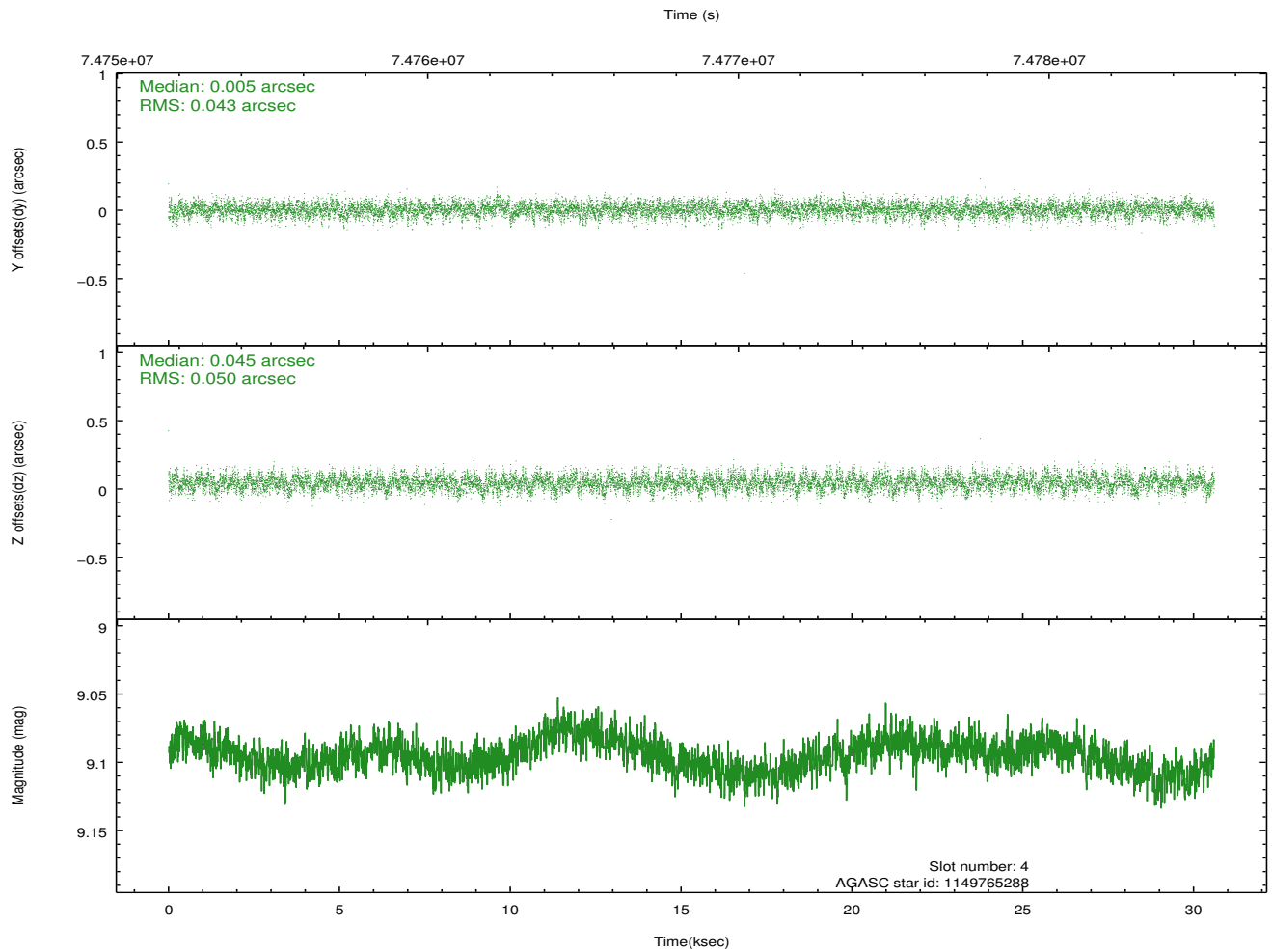
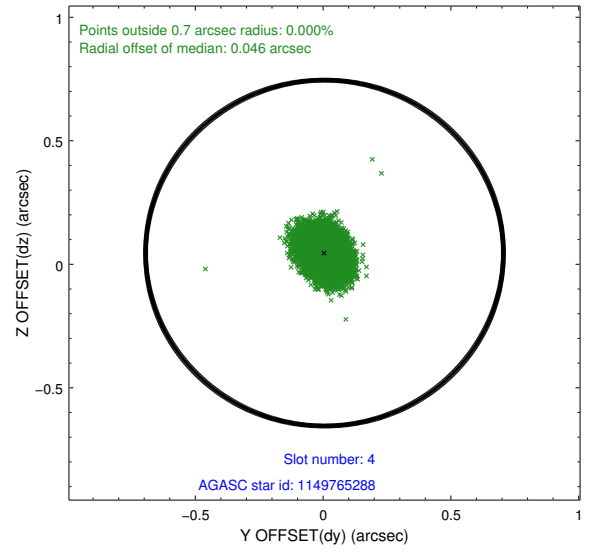
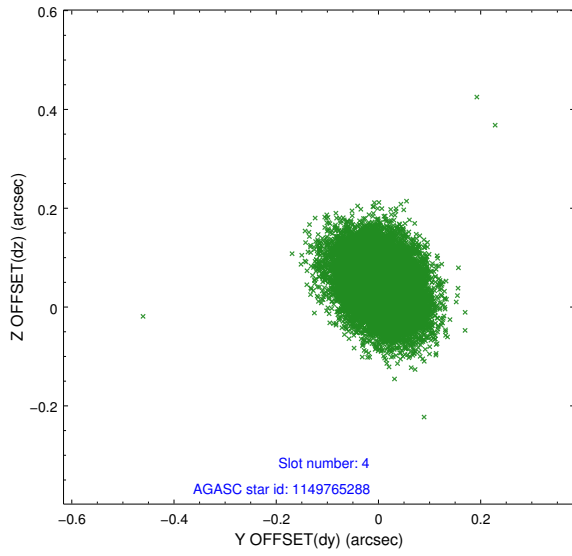
slot	status	id	mag	n_pts	med_dy	med_dz	dr1	dr2	ra	dec	mean_y	mean_z
0	FID	ACIS-S-2	7.11	7466	-0.022	-0.010	0.009	0.016	0.000000	0.000000	-754.09	-1725.56
1	FID	ACIS-S-4	7.21	7466	-0.006	0.014	0.007	0.012	0.000000	0.000000	2159.18	182.86
2	FID	ACIS-S-5	7.24	7466	-0.002	0.005	0.009	0.015	0.000000	0.000000	-1806.81	176.62
3	GUIDE	1149778360	8.11	14929	-0.149	-0.098	0.050	0.080	287.205244	-59.332299	1847.12	1776.84
4	GUIDE	1149765288	9.10	14922	0.005	0.045	0.070	0.115	288.533709	-59.930458	709.75	-1254.13
5	GUIDE	1188839456	9.95	14853	0.126	-0.118	0.129	0.209	286.296532	-60.378729	-2261.04	1882.64
6	UNUSED		0.00	0	0.000	0.000	0.000	0.000	0.000000	0.000000	0.00	0.00
7	GUIDE	1188960208	9.80	14915	0.016	0.173	0.110	0.177	288.773599	-60.501072	-1065.72	-2373.26

2.4 Star Slots

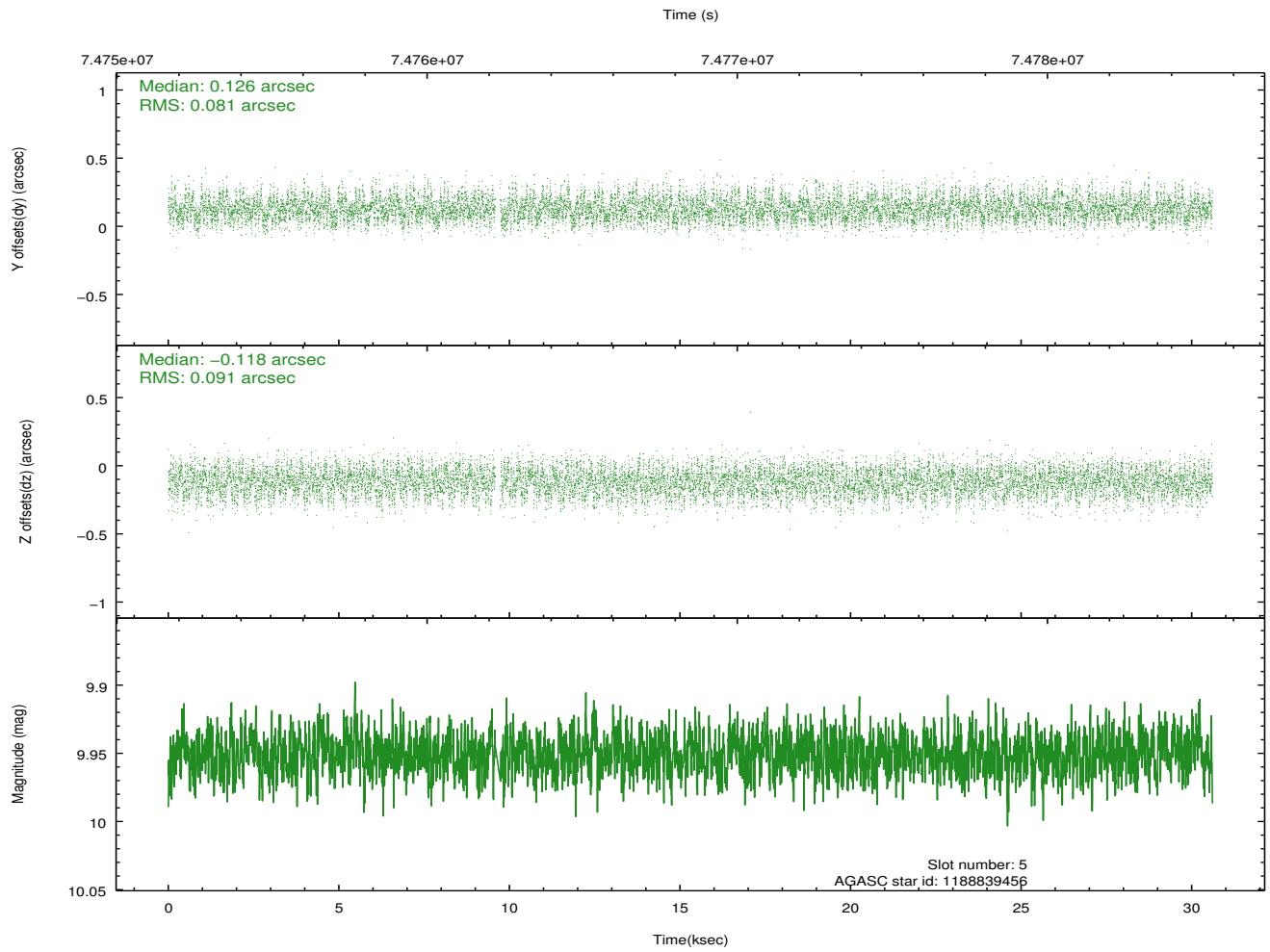
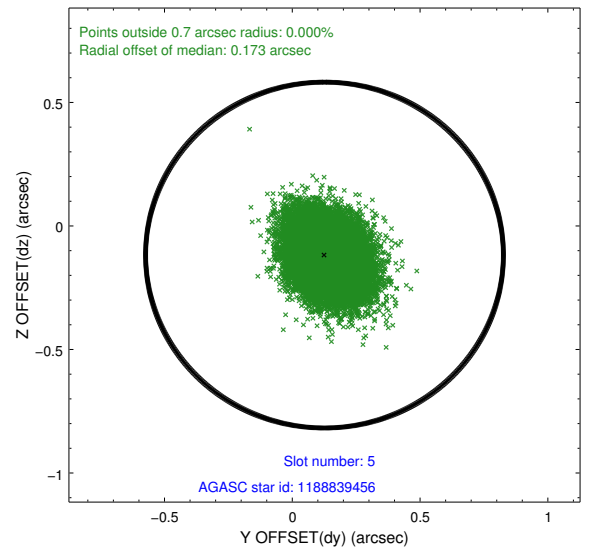
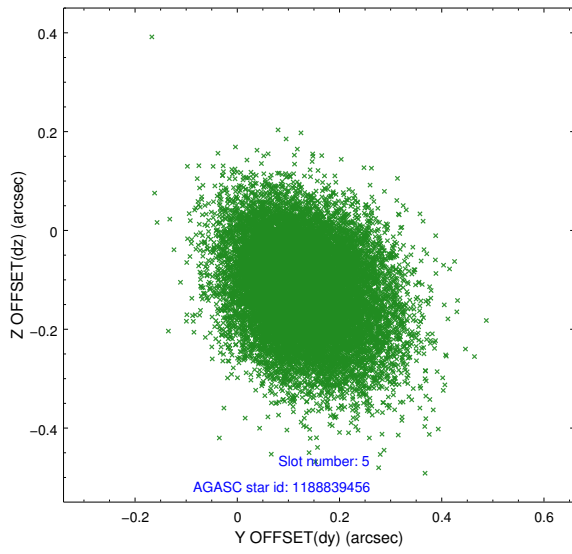
2.4.1 Slot 3



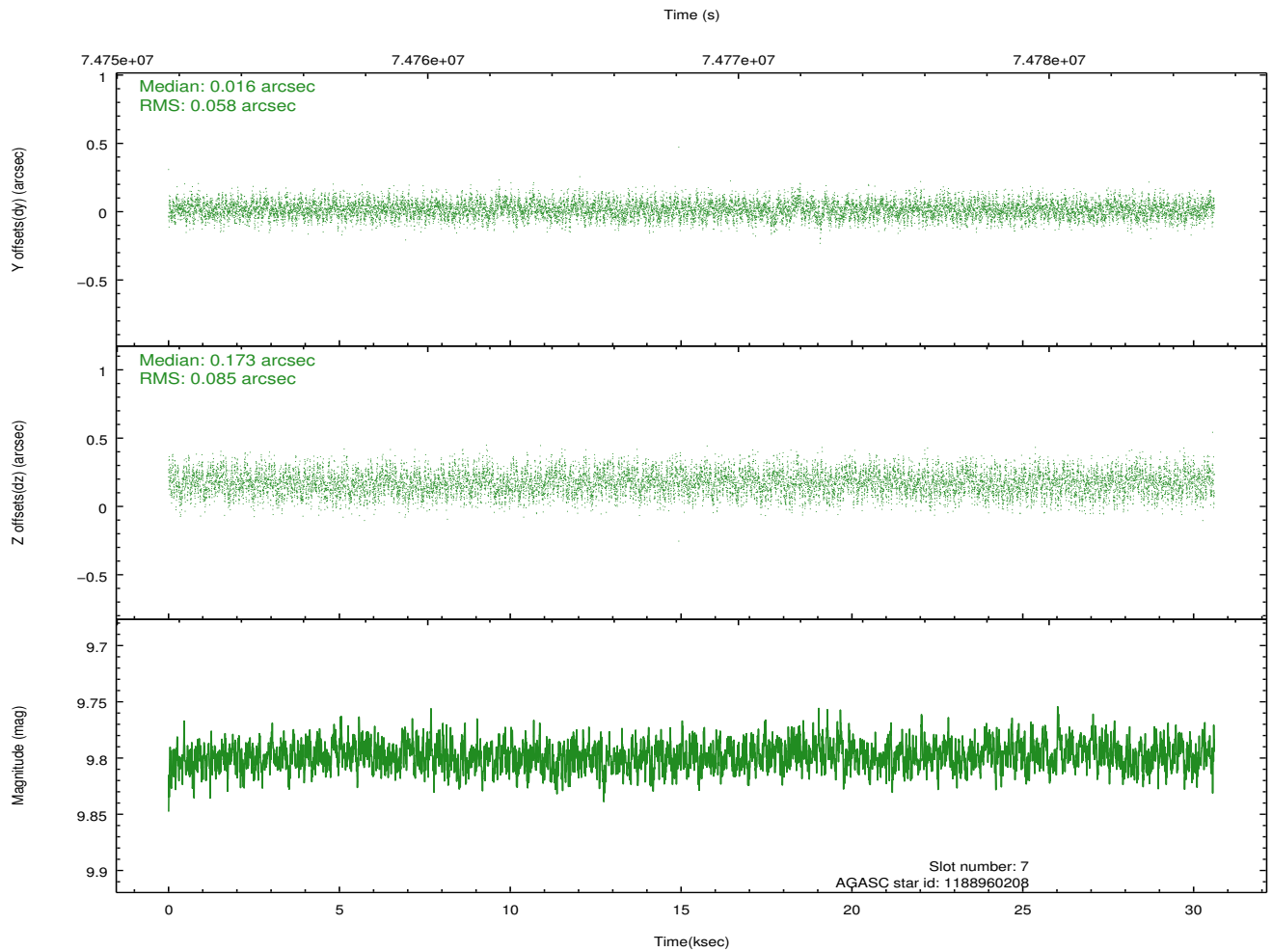
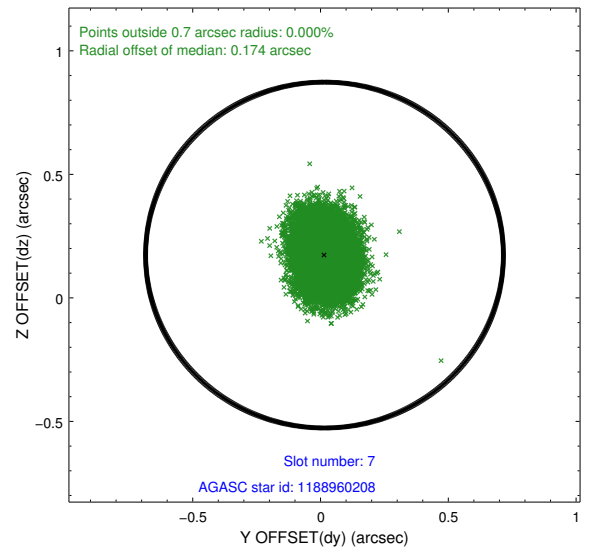
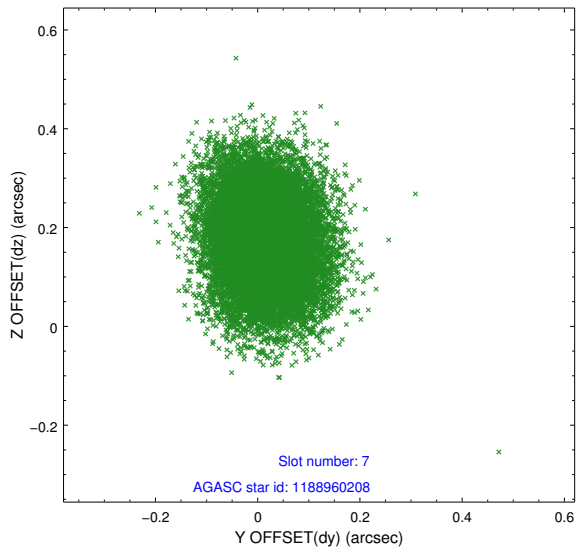
2.4.2 Slot 4



2.4.3 Slot 5

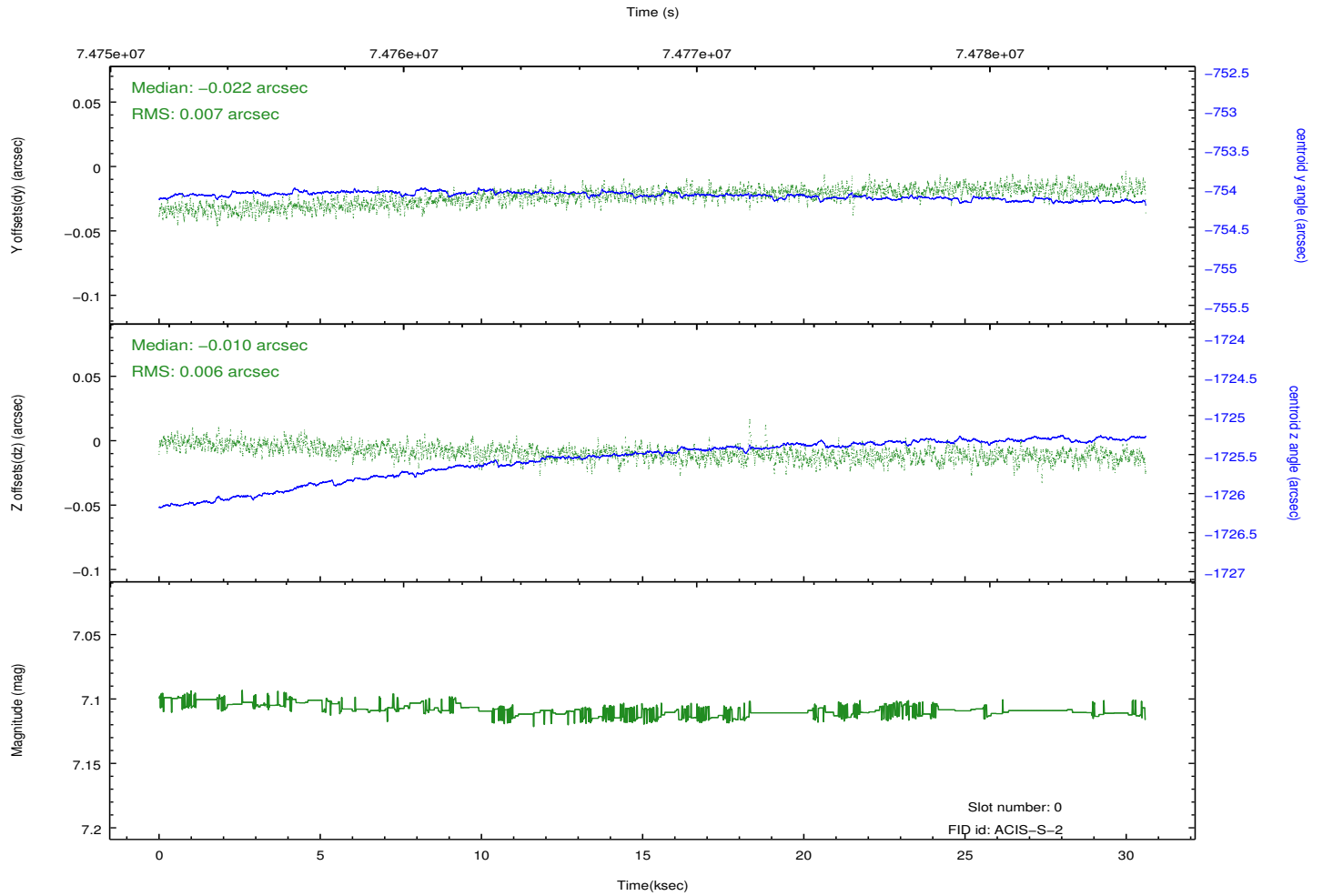
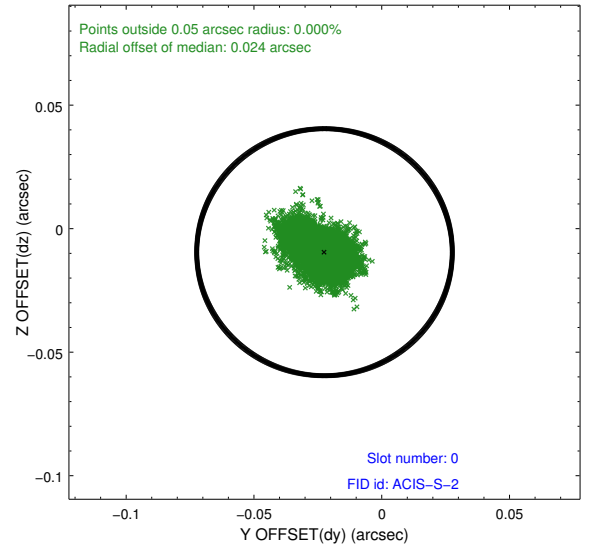
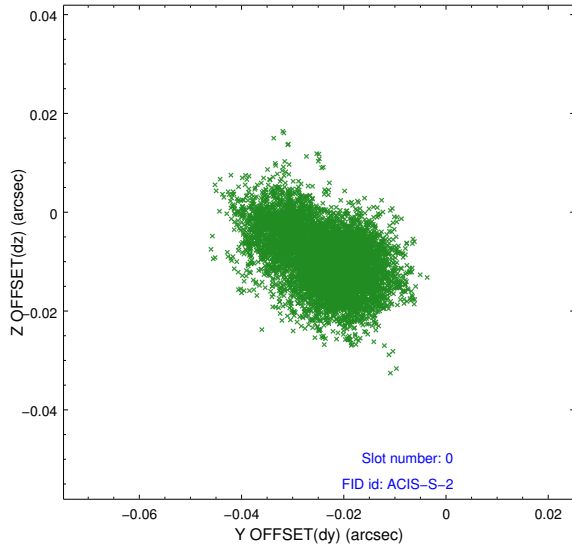


2.4.4 Slot 7

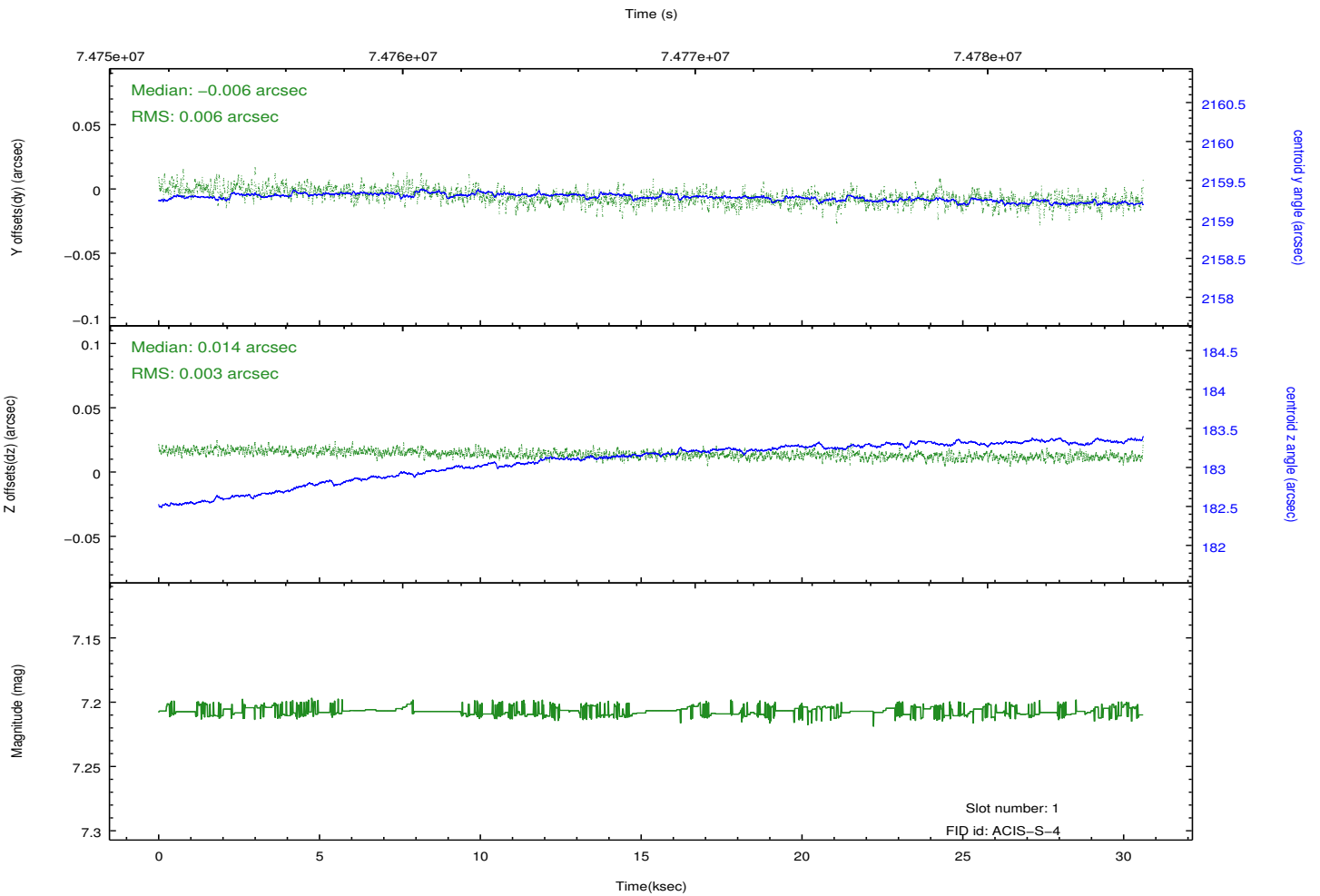
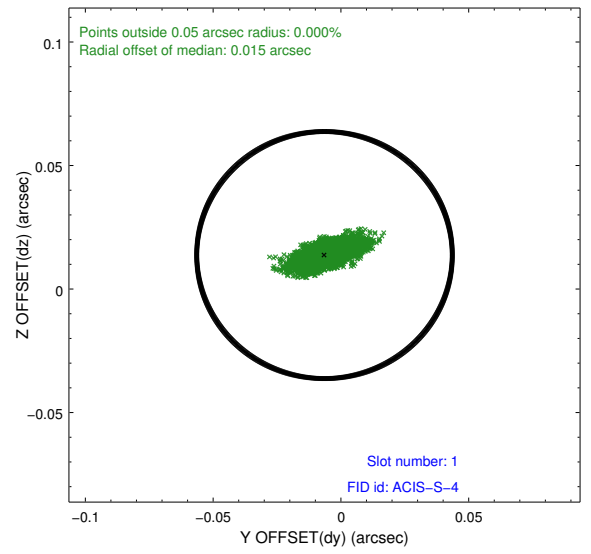
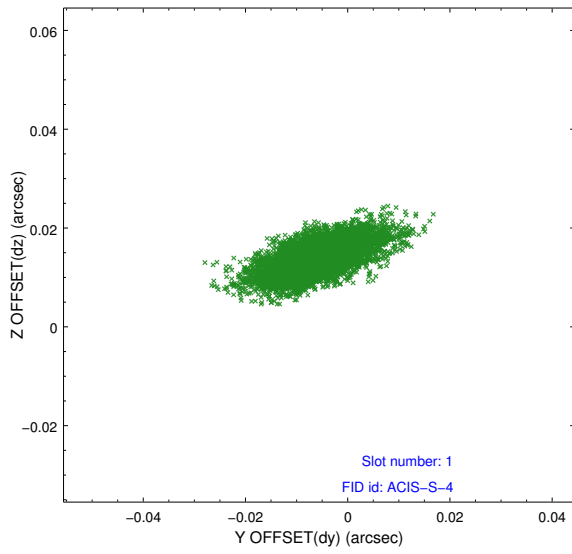


2.5 FID Slots

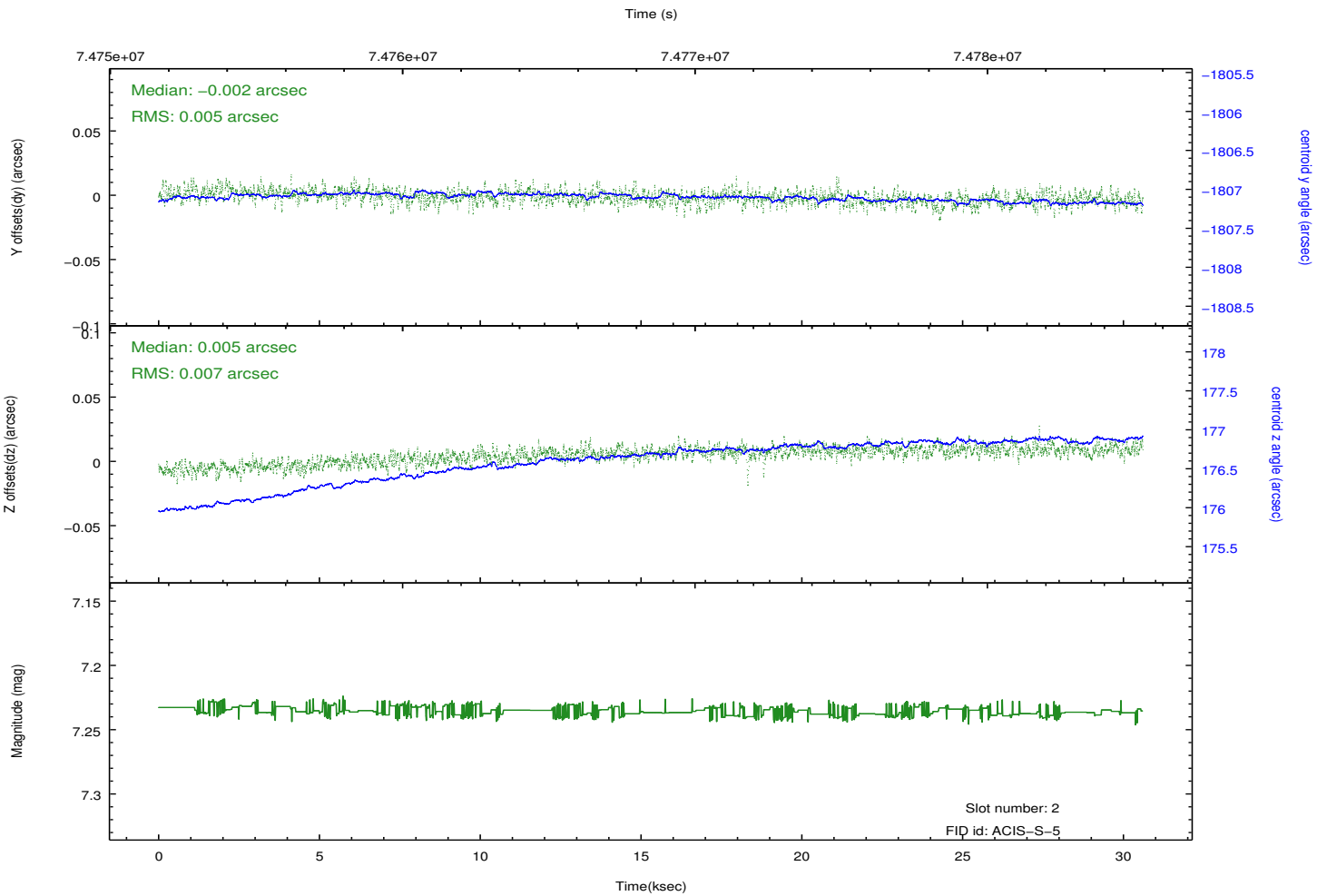
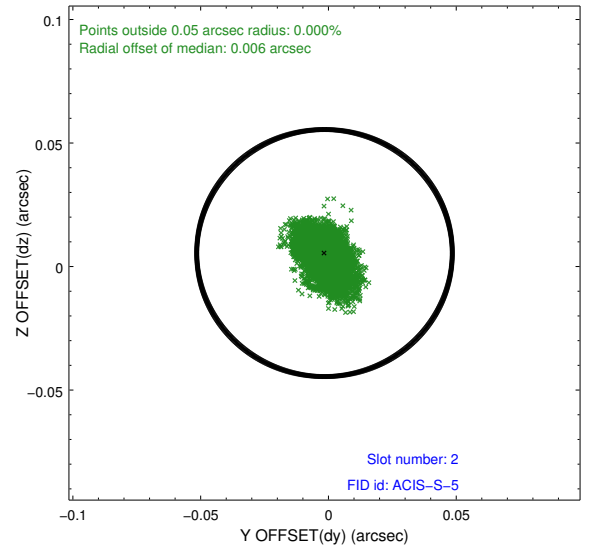
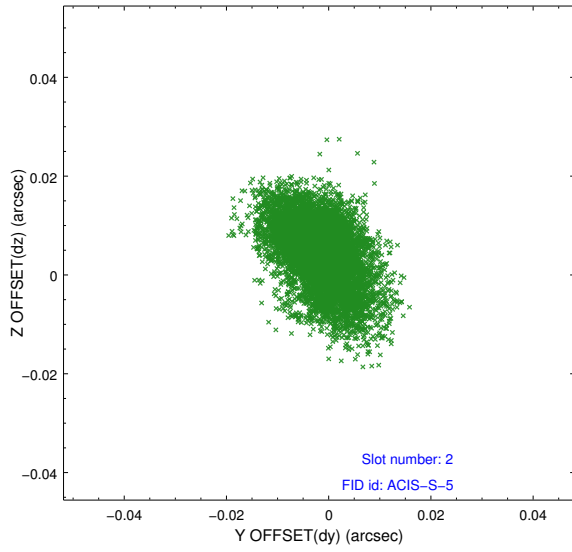
2.5.1 Slot 0



2.5.2 Slot 1



2.5.3 Slot 2



A Summary

A.1 Status

V&V Scientist	Beth Sundheim
V&V Date (YYYY-MM-DD)	2012.08.30
V&V Edition	1
V&V Disposition and Status	OK
V&V Charge Time	29.846

A.2 Comments

Slot 6 was not utilized in this observation.