

V&V Reference Report

L2 ASCDS Version : 8.4.4

Observation 9568 - L2 Version 2
Chandra X-Ray Center

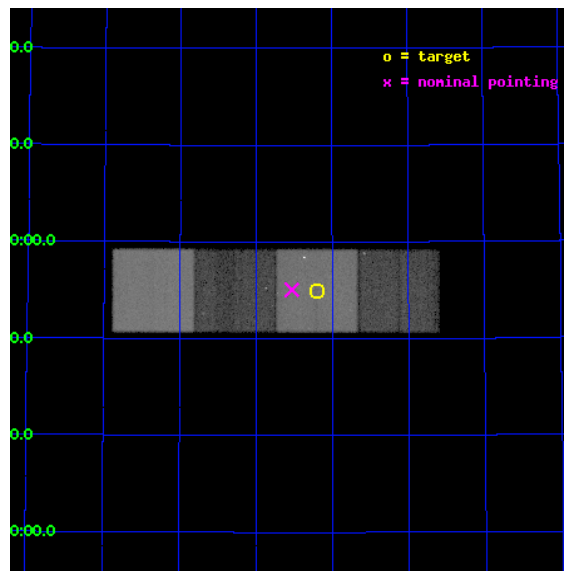
L2 Processing Date : May 7 2012

Contents

1	Front	2
2	OBI	3
2.1	OBI	3
2.1.1	Images	3
2.1.2	Bias	3
2.1.3	Parameters	4
2.1.4	Events	4
2.2	Compared Parameters	5
2.3	Aspect	6
2.4	Star Slots	9
2.4.1	Slot 3	9
2.4.2	Slot 4	10
2.4.3	Slot 5	11
2.4.4	Slot 6	12
2.4.5	Slot 7	13
2.5	FID Slots	14
2.5.1	Slot 0	14
2.5.2	Slot 1	15
2.5.3	Slot 2	16
A	Summary	17
A.1	Status	17
A.2	Comments	17

1 Front

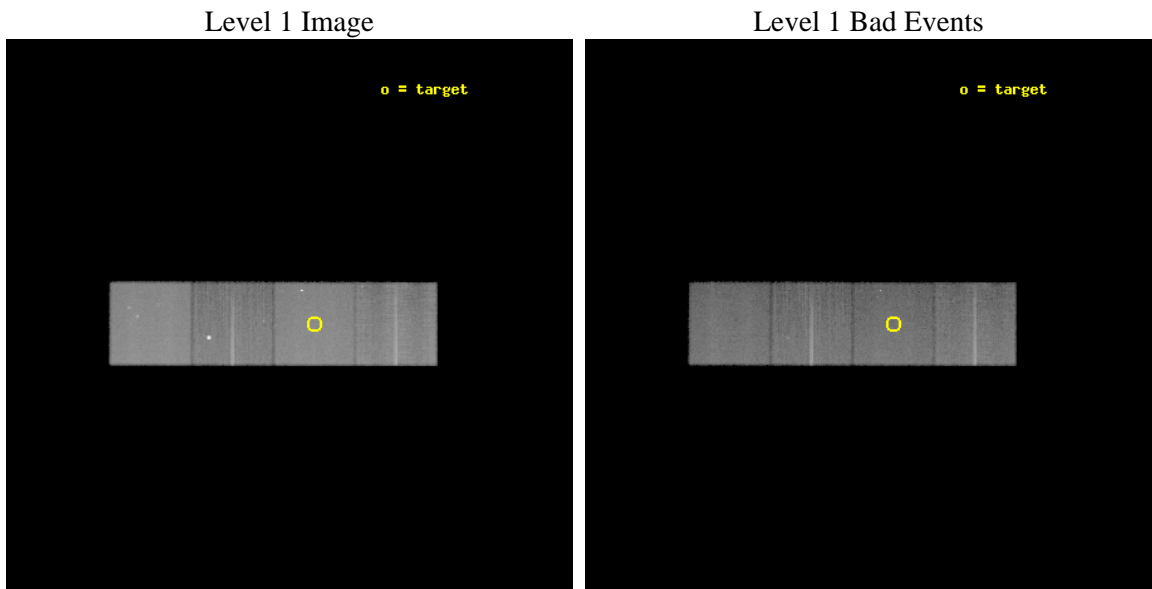
seq_num	600709	Sequence number
obs_id	9568	Observation id
title	Testing binary evolution in pristine ancient dwarf galaxies	Propos
observer	Dr. R. Di Stefano	Principal investigator
object	Draco	Source name
dtcycle	0	
cycle	P	events from which exps? Prim/Second/Both
ra_targ	260.051667	Observer's specified target RA [deg]
dec_targ	57.915278	Observer's specified target Dec [deg]
ra_nom	260.13222775231	Nominal RA [deg]
dec_nom	57.917801104895	Nominal Dec [deg]
roll_nom	0.088365196517493	Nominal Roll [deg]
revision	2	Processing version of data
ontime	24824.800190926	Sum of GTIs [s]
livetime	24500.445900679	Livetime [s]
ontime5	24824.800190926	Sum of GTIs [s]
ontime6	24821.65923053	Sum of GTIs [s]
ontime7	24824.800190926	Sum of GTIs [s]
ontime8	24824.800190926	Sum of GTIs [s]
l2events	369877	Number of level 2 events



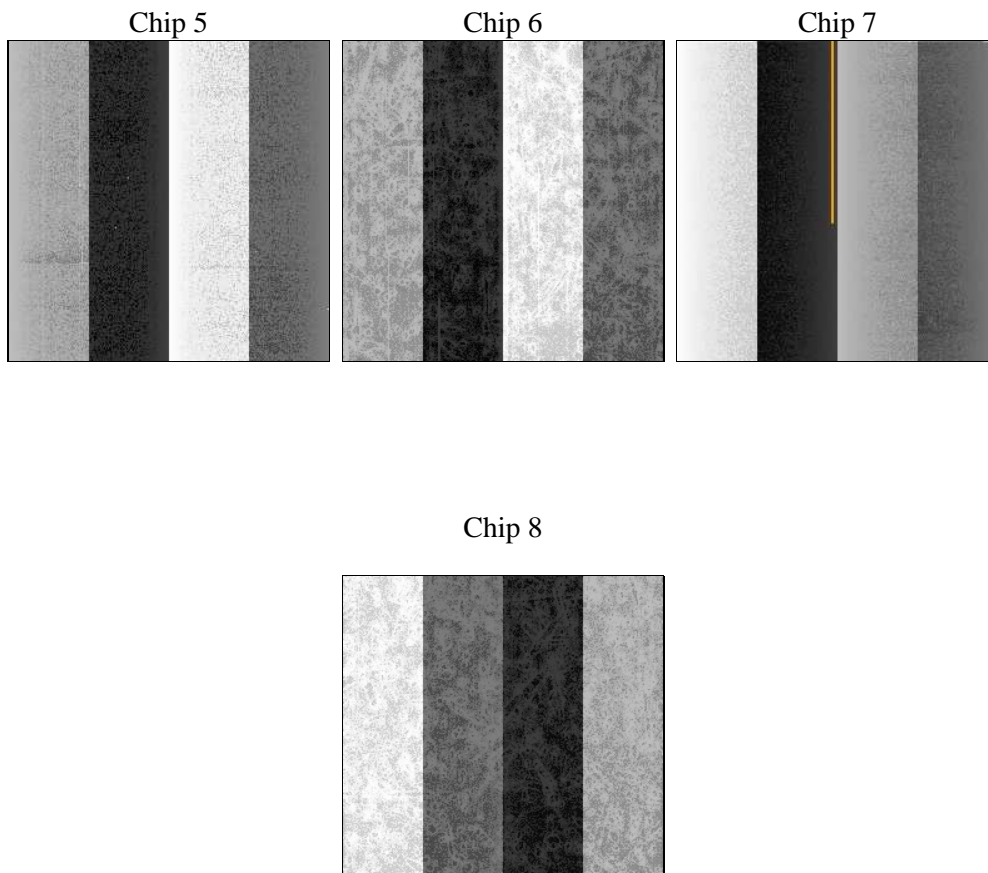
2 OBI

2.1 OBI

2.1.1 Images



2.1.2 Bias



2.1.3 Parameters

obi_num	0	Obi number	sched_exp_time	24650.102000	[s] Scheduled observation exposure time
ascdsver	8.4.4	Processing system revision	ontime	24824.800190926	Sum of GTIs [s]
caldsver	4.4.9	 	ontime5	24824.800190926	Sum of GTIs [s]
date	2012-05-07T03:10:40	Date and time of file creation	ontime6	24821.65923053	Sum of GTIs [s]
revision	2	Processing version of data	ontime7	24824.800190926	Sum of GTIs [s]
			ontime8	24824.800190926	Sum of GTIs [s]
			l1events	1308356	Number of level 1 events

2.1.4 Events

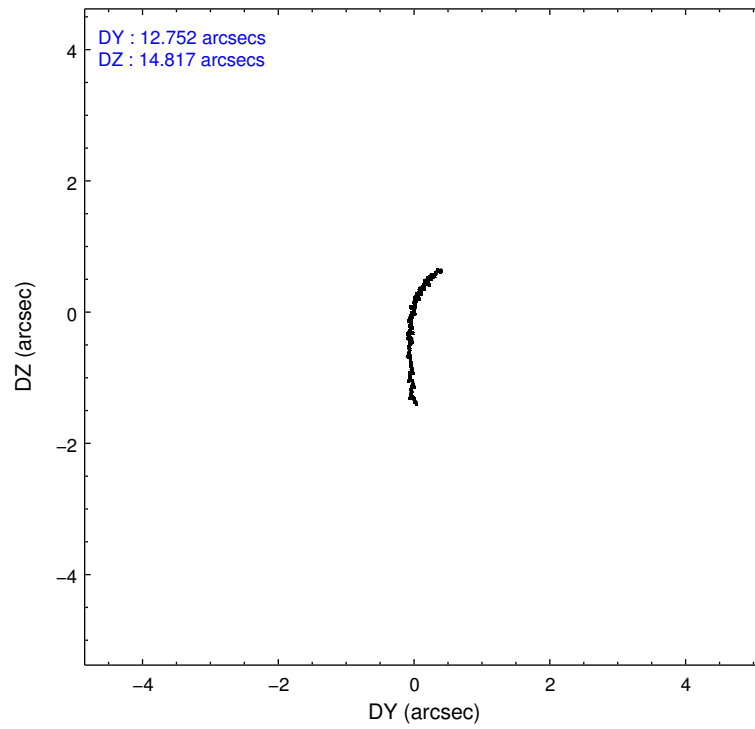
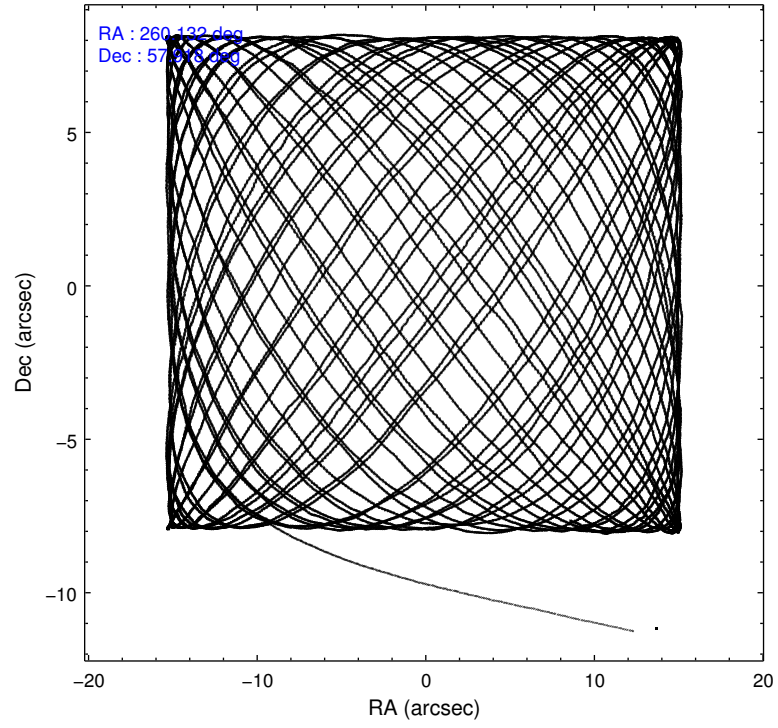
	ccd 5	ccd 6	ccd 7	ccd 8
level 1 events	374791	266281	348198	319086
rejected events	206360	220057	200133	246322
rejected %	55%	82%	57%	77%

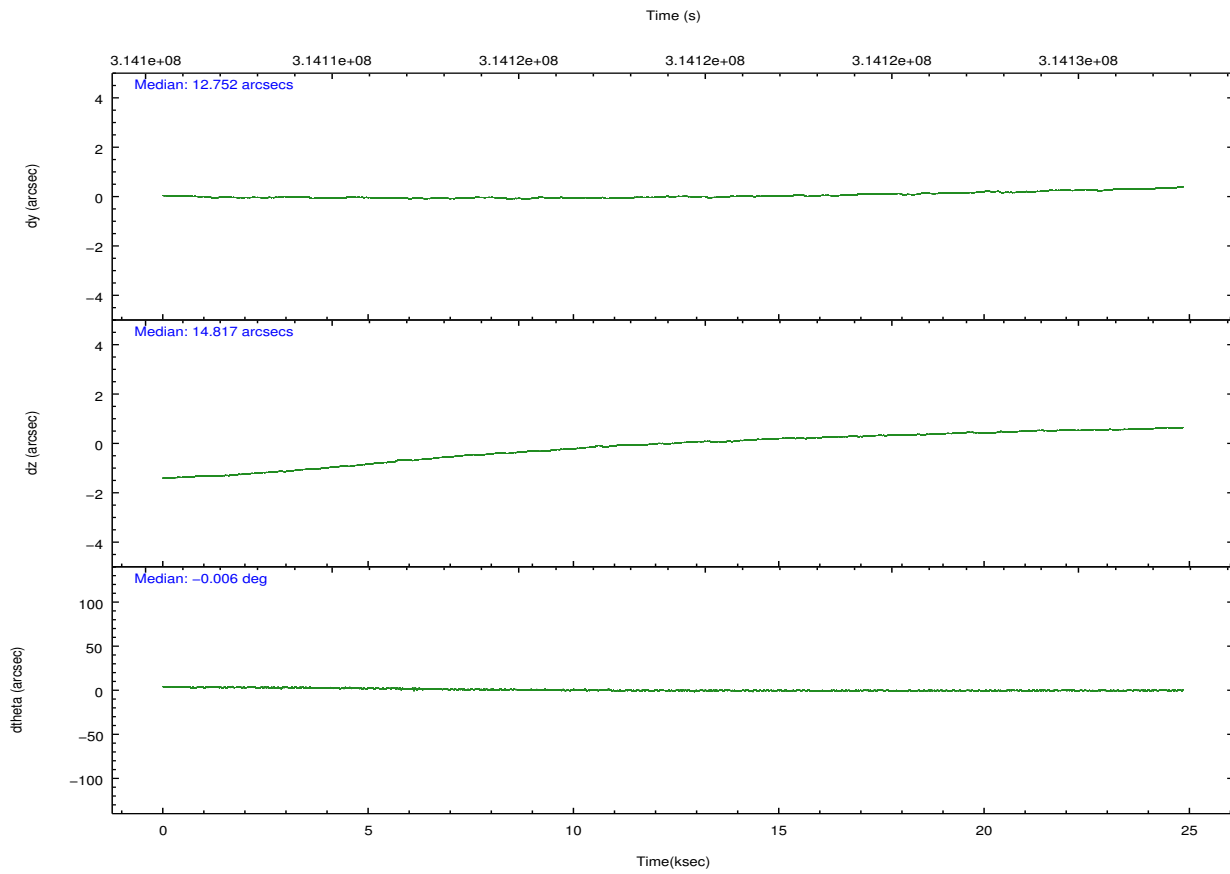
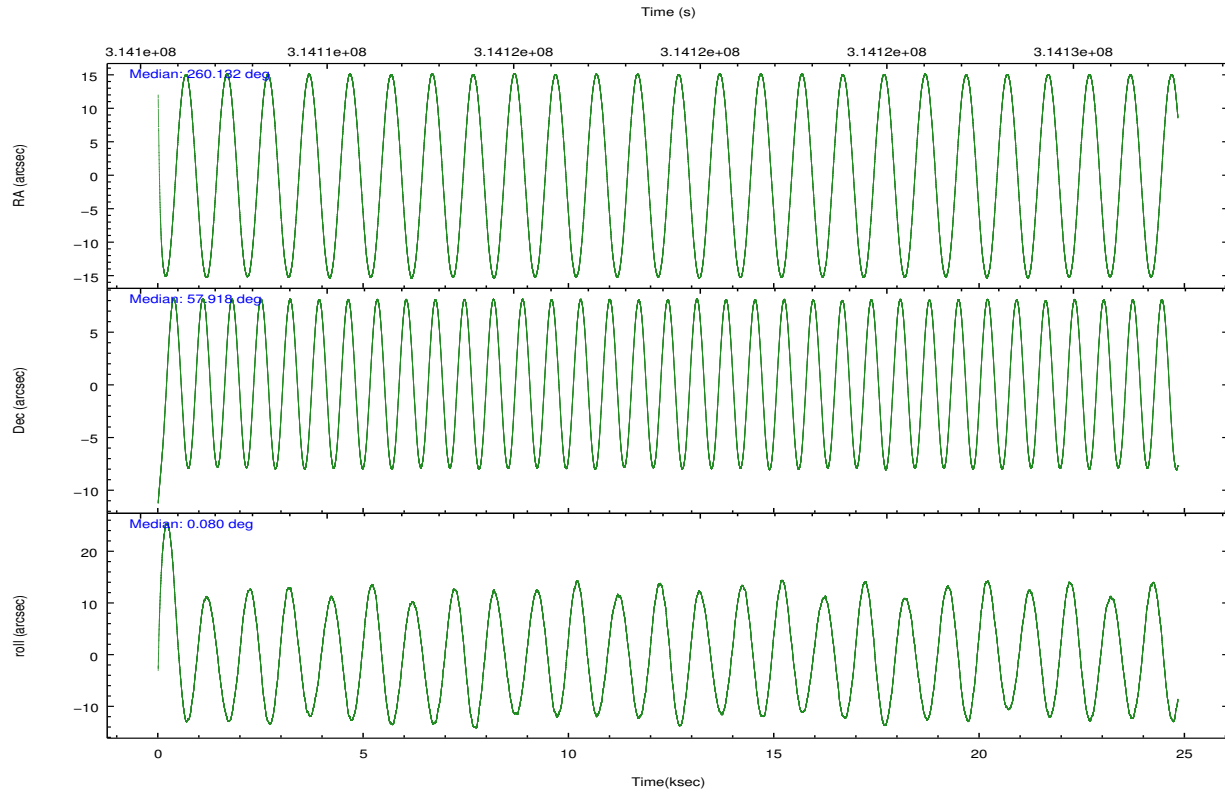
	ccd 5	ccd 6	ccd 7	ccd 8
grade 0 events	11427	14068	14234	24688
	3%	5%	4%	7%
grade 1 events	498	141	430	237
	0%	0%	0%	0%
grade 2 events	52911	20524	30737	16445
	14%	7%	8%	5%
grade 3 events	6119	2957	12701	7210
	1%	1%	3%	2%
grade 4 events	5985	2890	12657	6880
	1%	1%	3%	2%
grade 5 events	26048	11347	31916	15560
	6%	4%	9%	4%
grade 6 events	94854	6418	79945	18584
	25%	2%	22%	5%
grade 7 events	176949	207936	165578	229482
	47%	78%	47%	71%

2.2 Compared Parameters

Parameter	Planned	Actual	Parameter	Planned	Actual
Instrument	ACIS	ACIS	Obspar format version number	7	7
Detector	ACIS-5678	ACIS-5678	Obspar file type	PREDICTED	ACTUAL
Grating	NONE	NONE	Obspar update status	NONE	UPDATED
Data mode	FAINT	FAINT	Number of optional ACIS chips dropped	0	0
Observation mode	POINTING	POINTING	On-chip summing requested	N	N
[deg] Pointing RA	260.088054	260.1322277523071	Subarray requested	NONE	NONE
[deg] Pointing Dec	57.903773	57.91780110489466	Alternating exposures requested	N	N
[deg] Pointing Roll	359.969168	0.08836519651749258	[s] Primary exposure time	0.000000	3.1
[mm] SIM focus pos	-0.684267	-0.6828225247311905			
[mm] SIM defocus	0	0.001444936568705701			
[mm] SIM translation stage pos	-190.132523	-190.145094680475			
[mm] SIM translation stage offset	0	0.01257209746719923			
[s] Observation start time (MET)	314106911.184000	314105783.25885			
Observation start date	2007-12-15T11:54:06	2007-12-15T11:36:23			
[s] Observation end time (MET)	314131562.184000	314131792.1226			
Observation end date	2007-12-15T18:44:57	2007-12-15T18:49:52			
Read mode	TIMED	TIMED			

2.3 Aspect



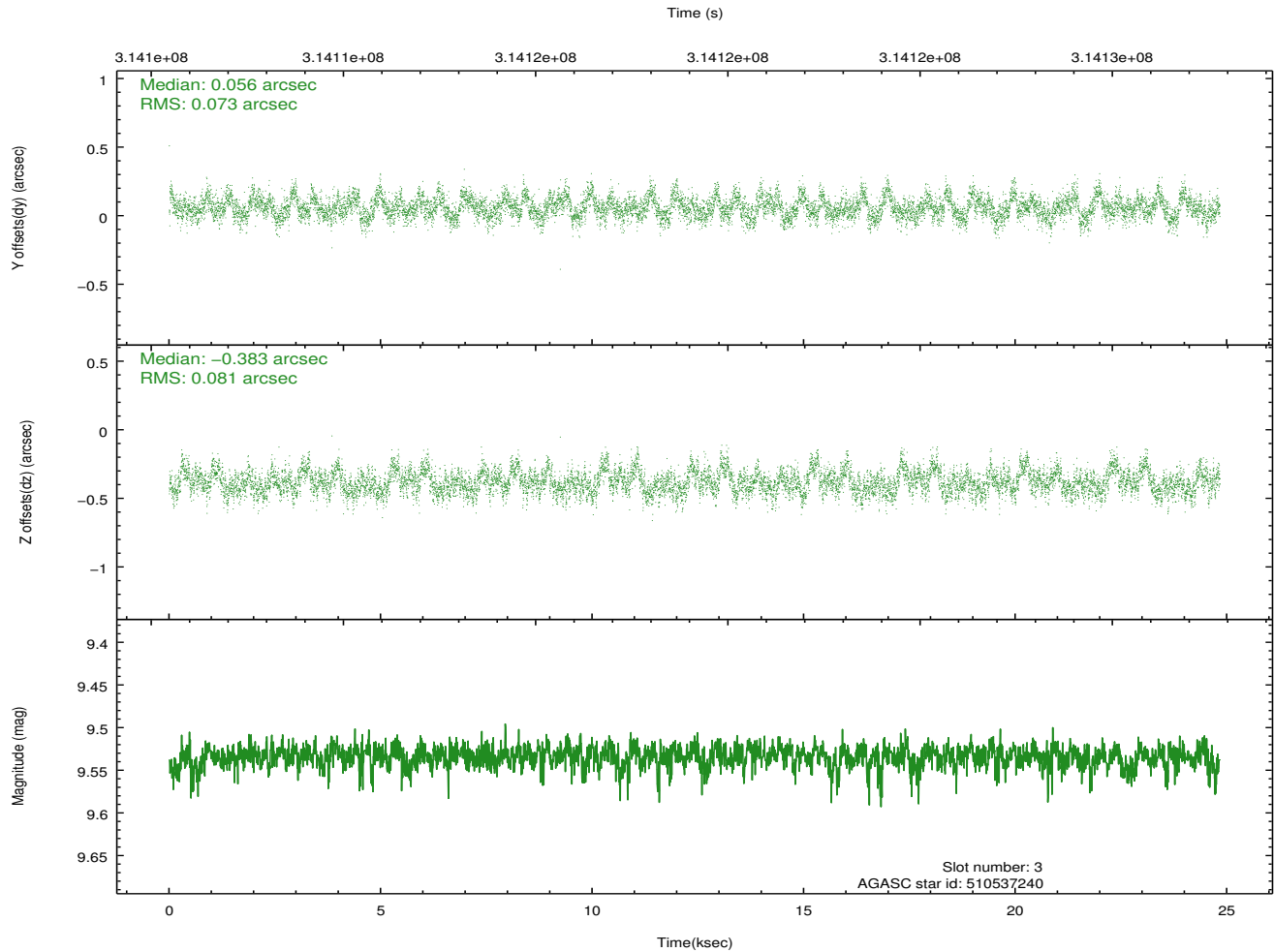
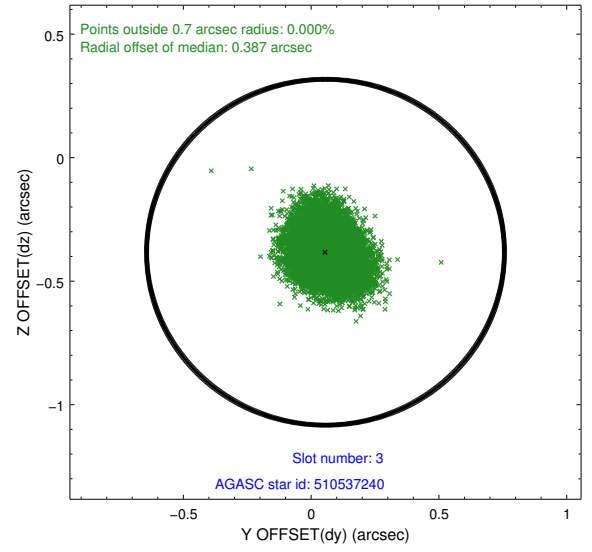
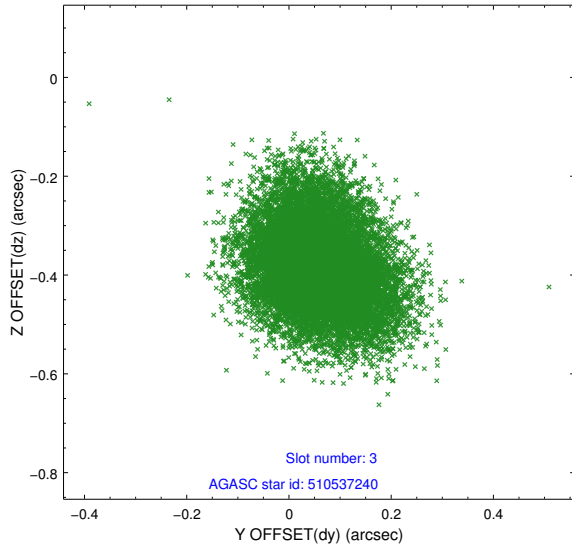


Slot Statistics

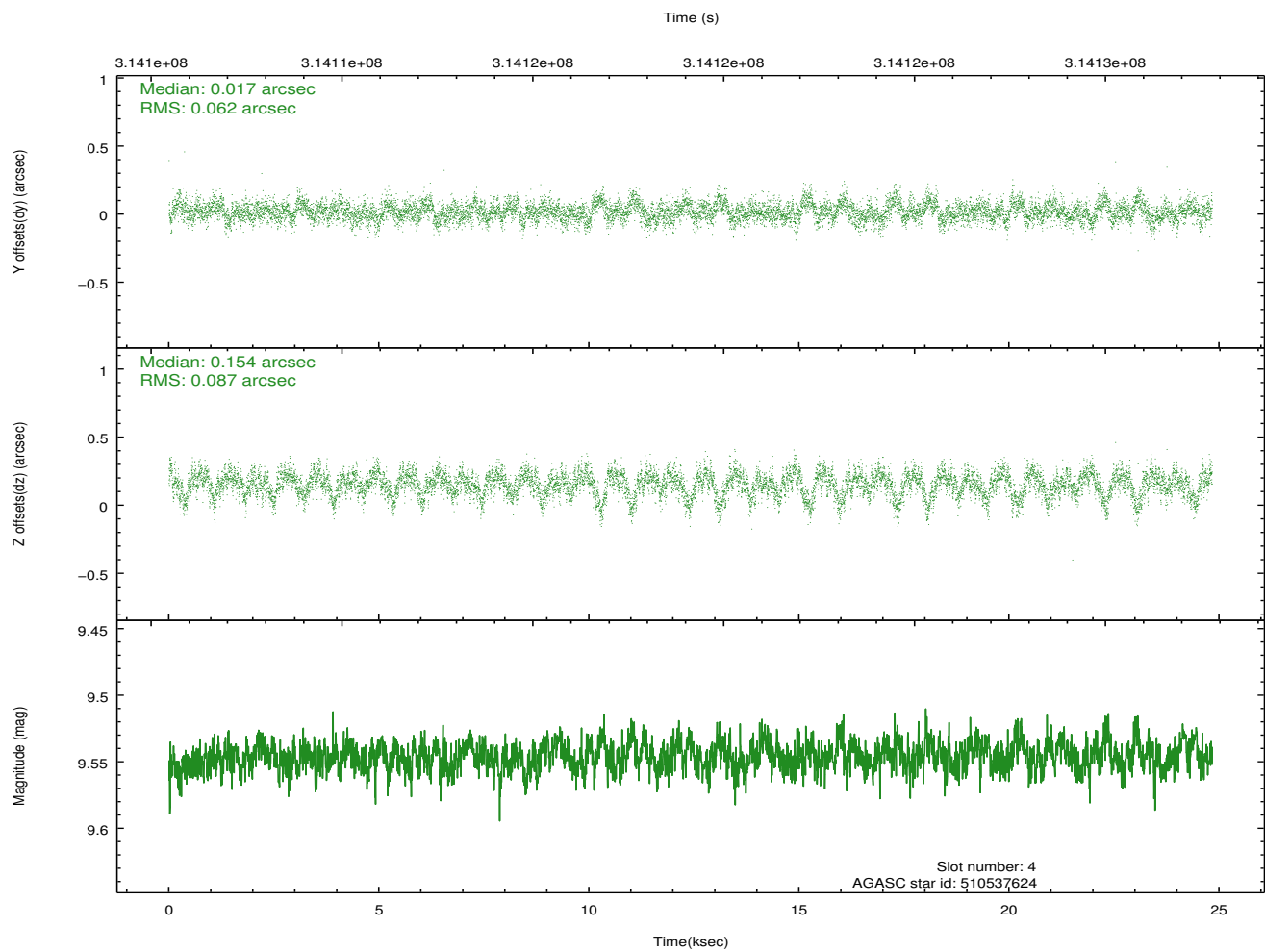
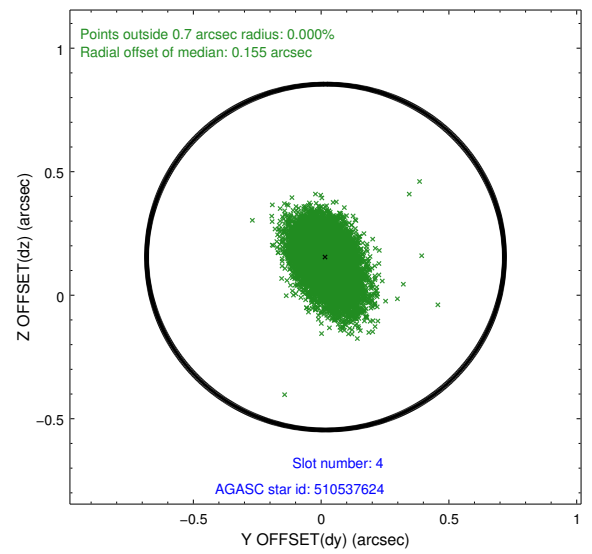
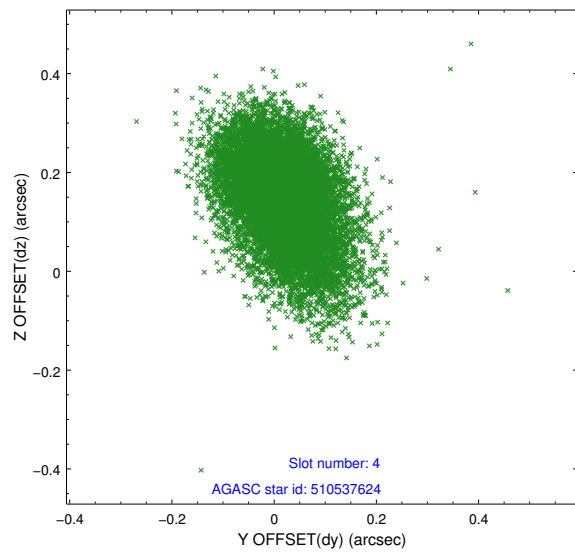
slot	status	id	mag	n_pts	med_dy	med_dz	dr1	dr2	ra	dec	mean_y	mean_z
0	FID	ACIS-S-1	7.20	6057	0.050	-0.034	0.023	0.031	0.000000	0.000000	930.38	-1731.58
1	FID	ACIS-S-4	7.19	6057	0.116	0.005	0.022	0.032	0.000000	0.000000	2147.90	172.50
2	FID	ACIS-S-5	7.23	6057	-0.195	0.045	0.010	0.017	0.000000	0.000000	-1818.59	166.24
3	GUIDE	510537240	9.53	12100	0.056	-0.383	0.117	0.188	259.436318	57.923115	-1245.62	74.37
4	GUIDE	510537624	9.55	12103	0.017	0.154	0.111	0.191	259.862211	57.989137	-430.92	307.85
5	GUIDE	510661040	8.40	12112	-0.058	-0.037	0.069	0.110	260.677615	58.091472	1121.77	681.14
6	GUIDE	510661936	8.32	12107	-0.138	0.035	0.064	0.101	261.068212	57.791678	1881.27	-388.71
7	GUIDE	511057576	9.45	12095	0.114	0.243	0.121	0.189	259.625490	58.358623	-874.14	1640.29

2.4 Star Slots

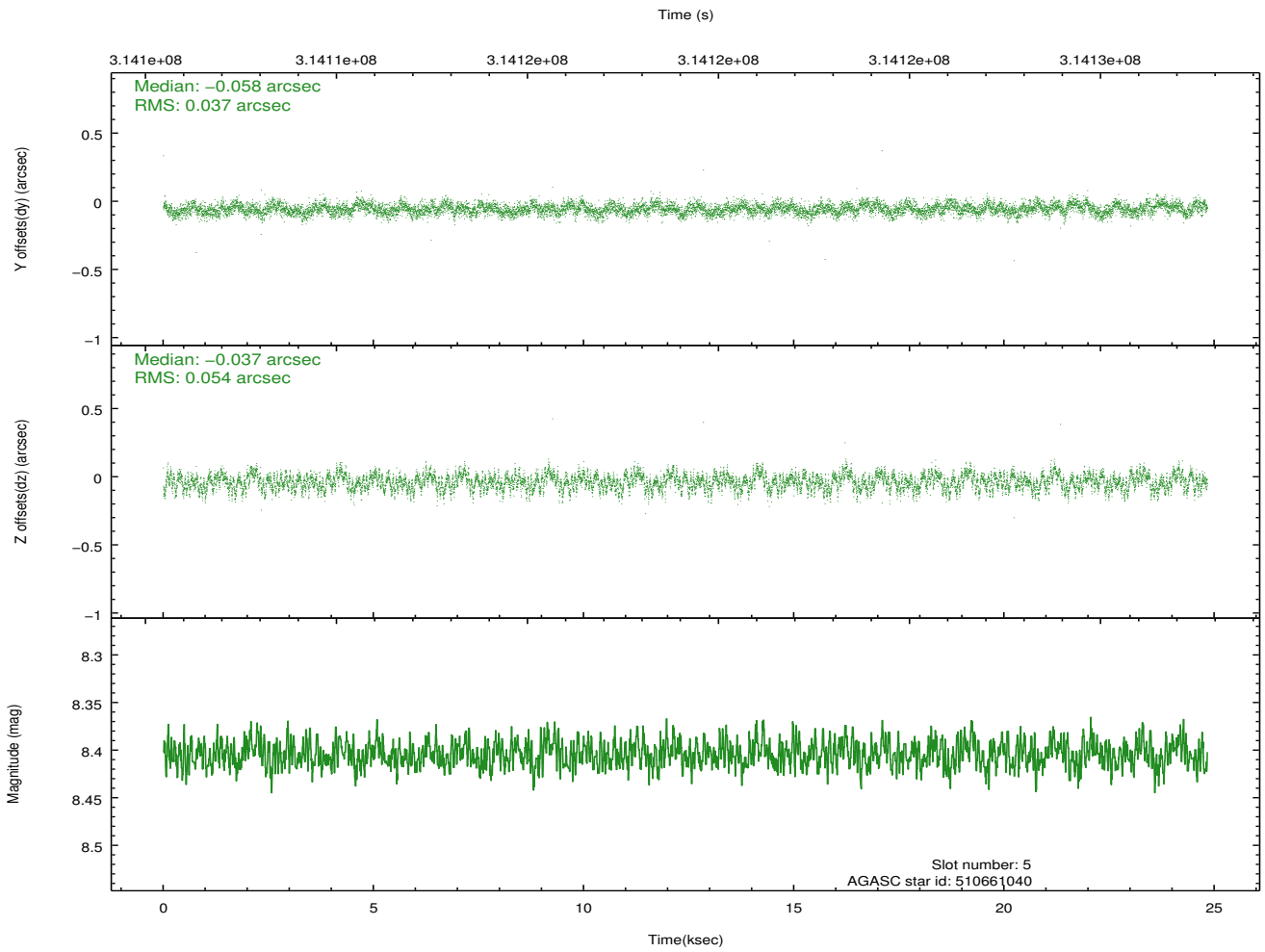
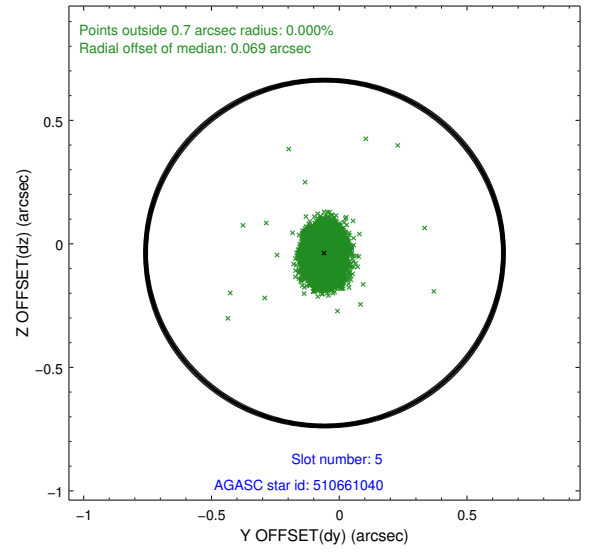
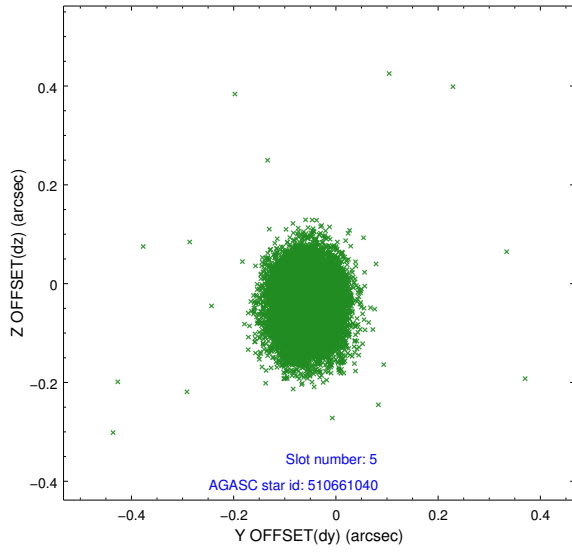
2.4.1 Slot 3



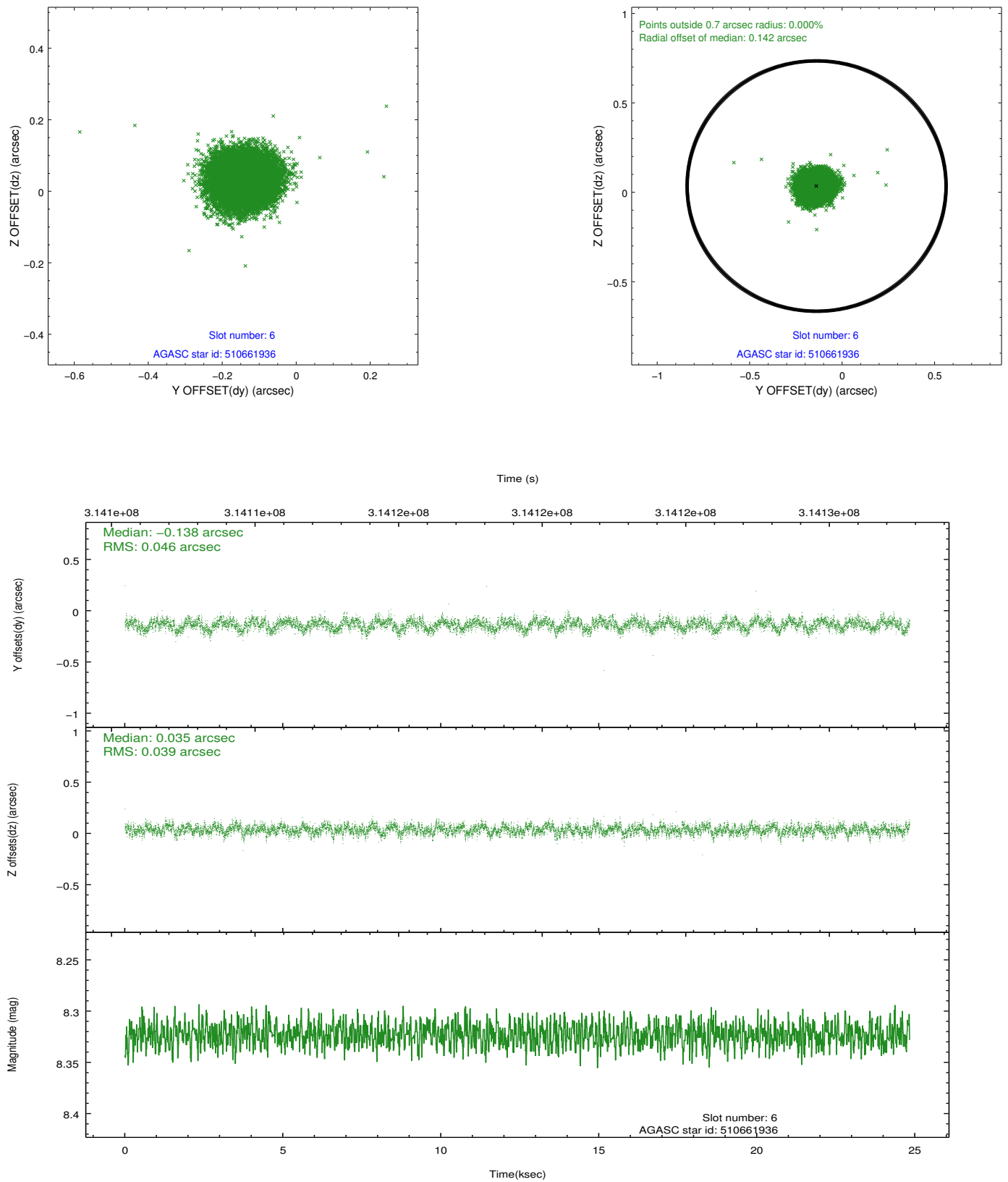
2.4.2 Slot 4



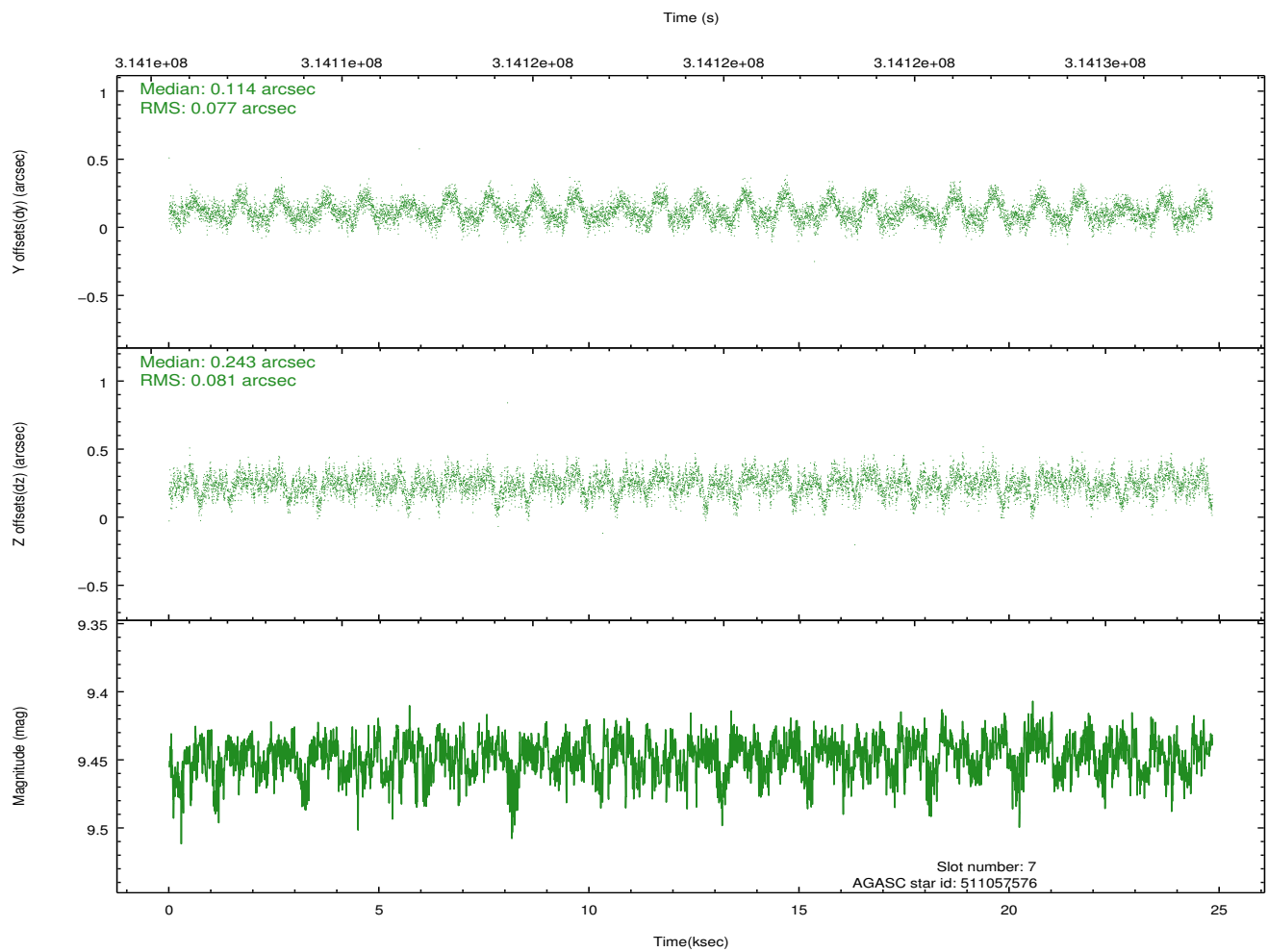
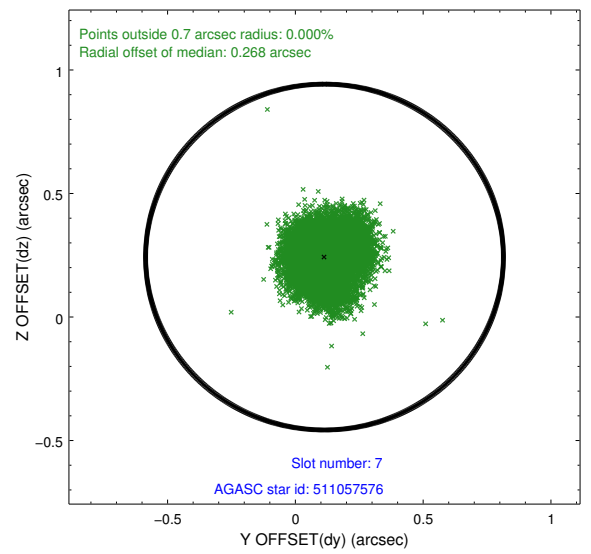
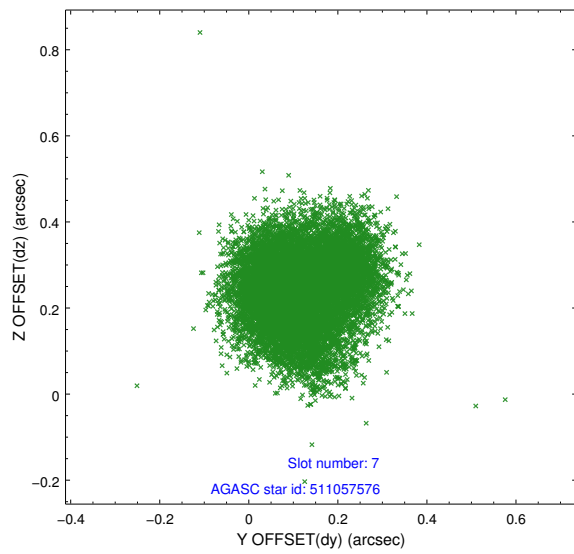
2.4.3 Slot 5



2.4.4 Slot 6

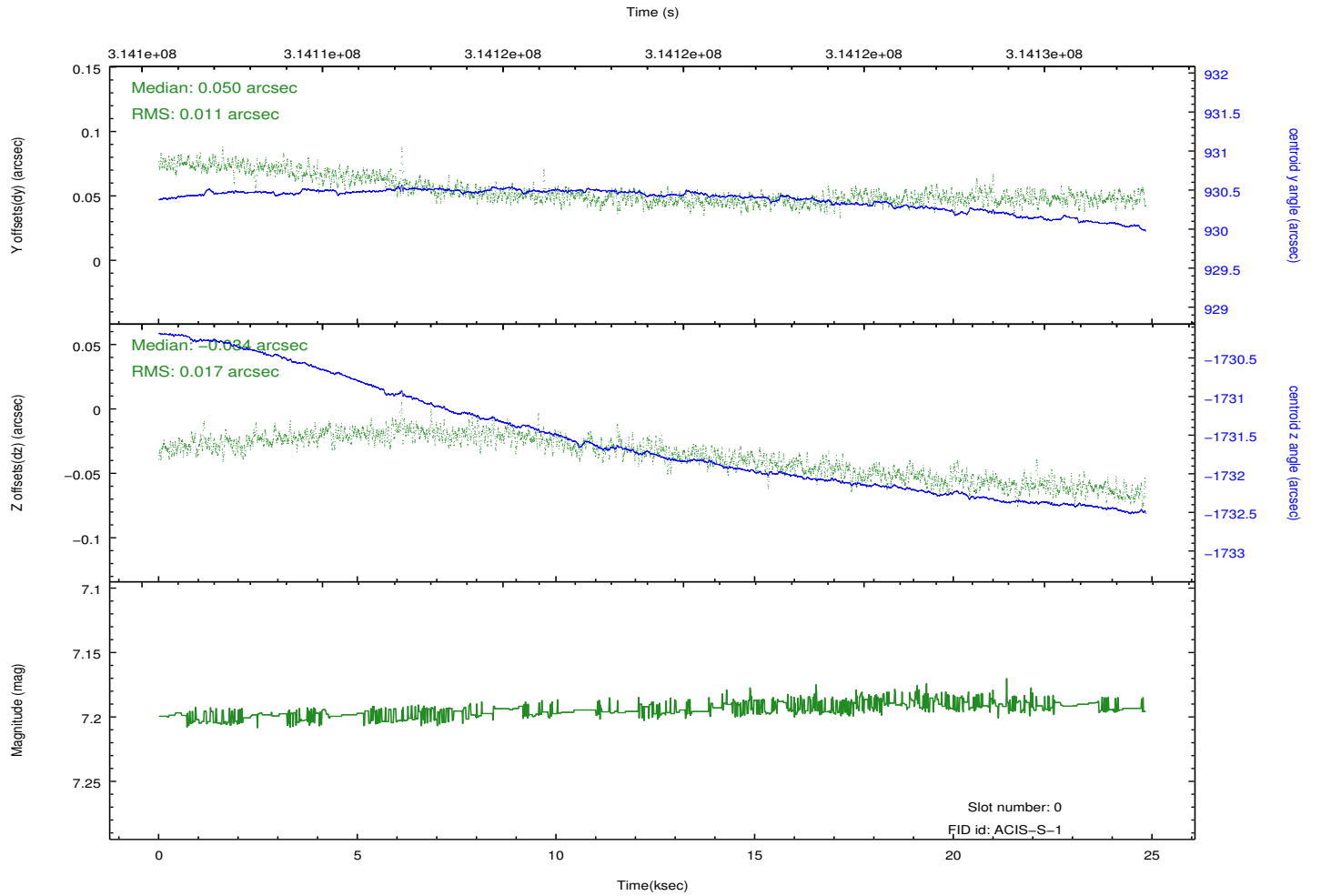
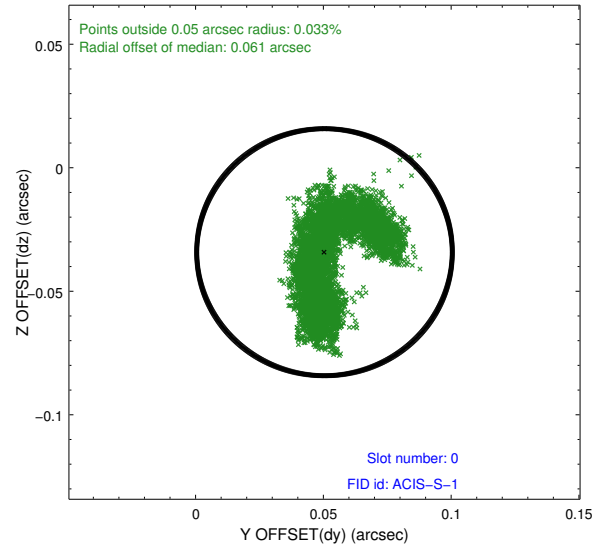
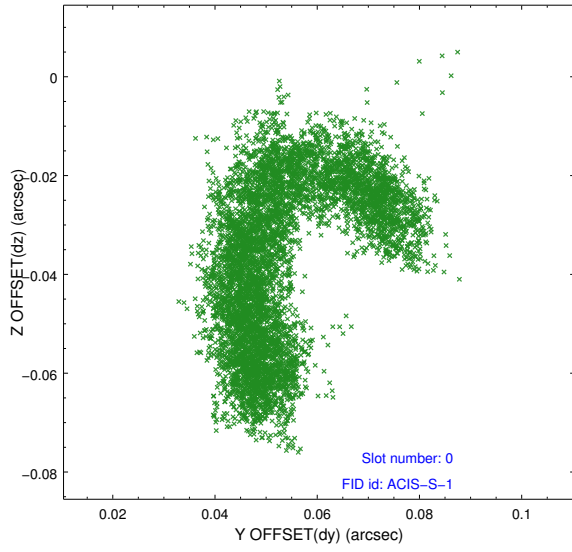


2.4.5 Slot 7

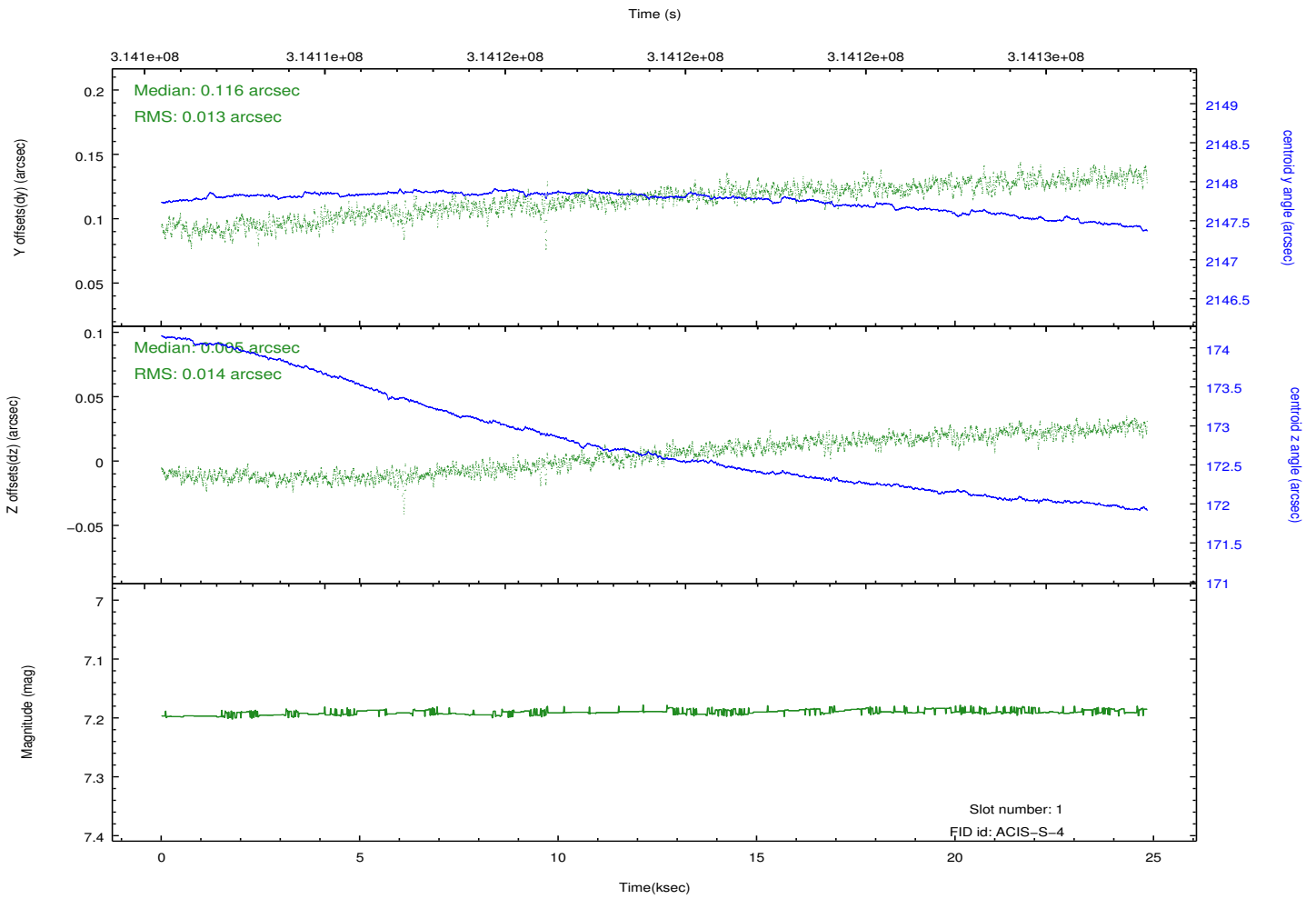
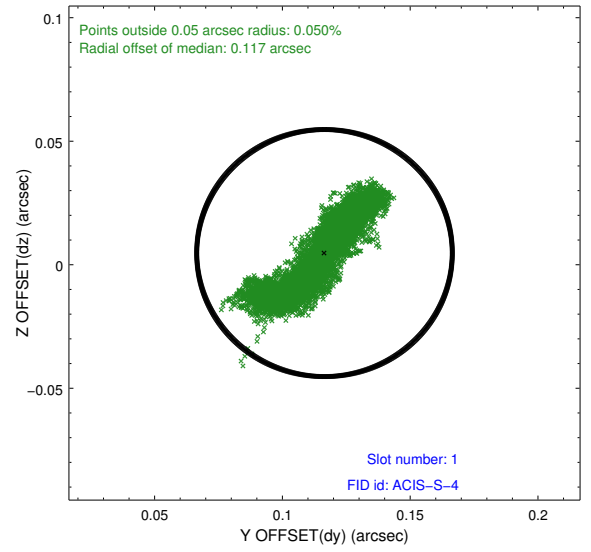
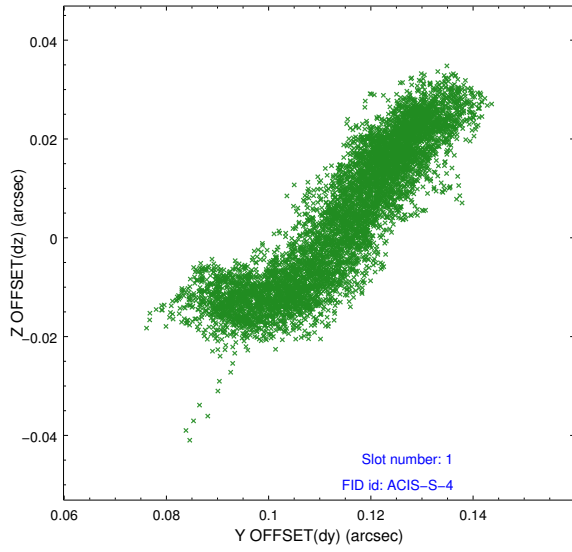


2.5 FID Slots

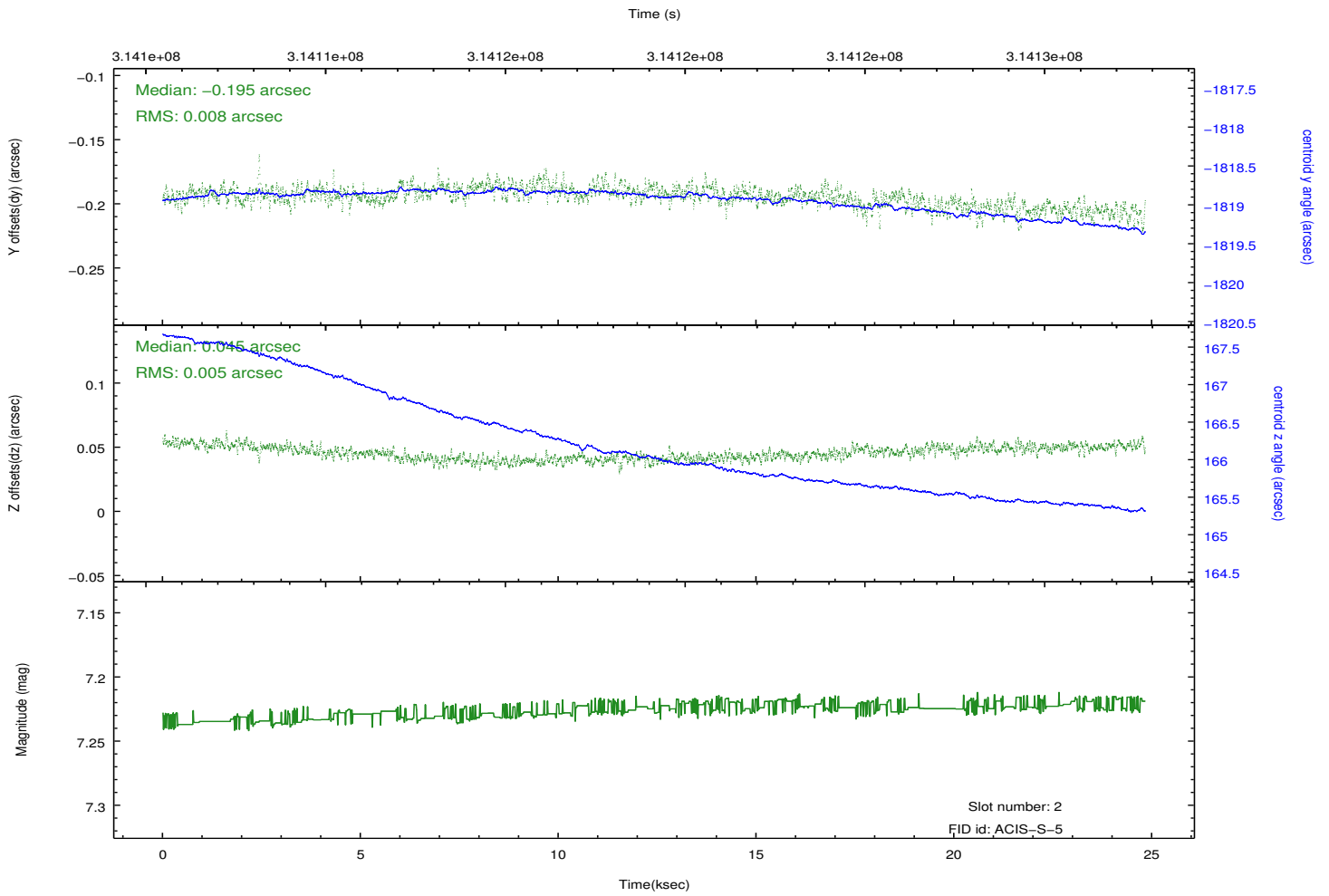
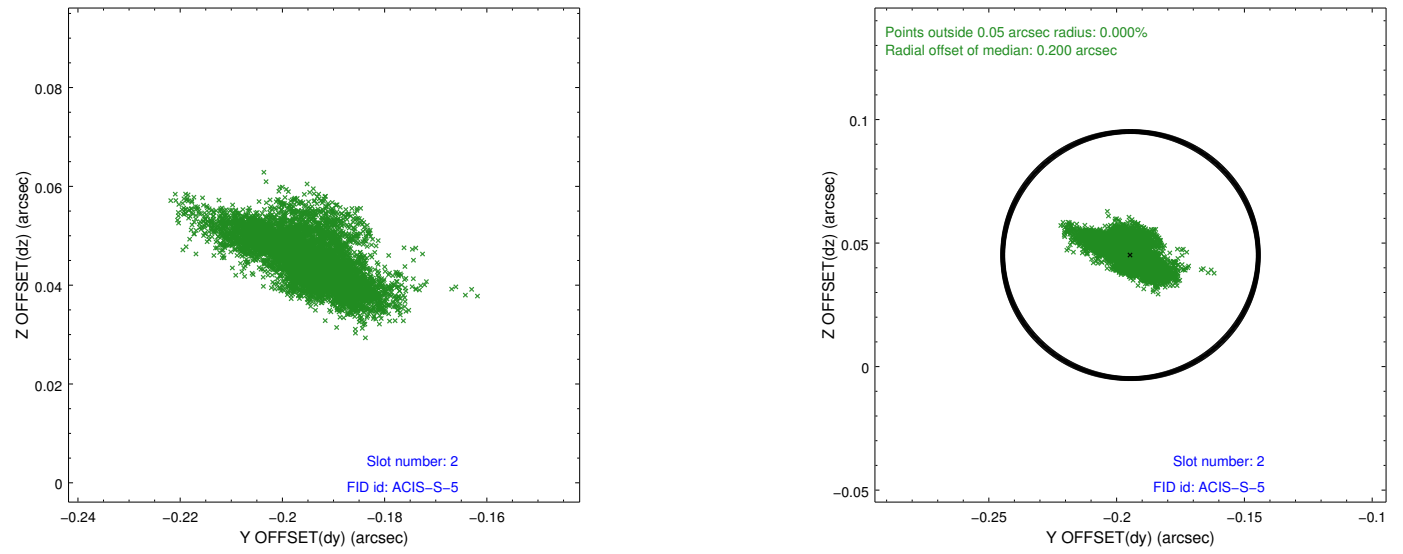
2.5.1 Slot 0



2.5.2 Slot 1



2.5.3 Slot 2



A Summary

A.1 Status

V&V Scientist	Jen Lauer
V&V Date (YYYY-MM-DD)	2012.05.08
V&V Edition	1
V&V Disposition and Status	OK
V&V Charge Time	24.8248001

A.2 Comments

Target position is the CCD node boundary at the center of the chip, and also near the 3 columns of bad pixels in the bias file. The target, if present, would have dithered over both of these features and thus it would have contained a number of bad pixels.