

V&V Reference Report

L2 ASCDS Version : 8.4.5

Observation 958 - L2 Version 5
Chandra X-Ray Center

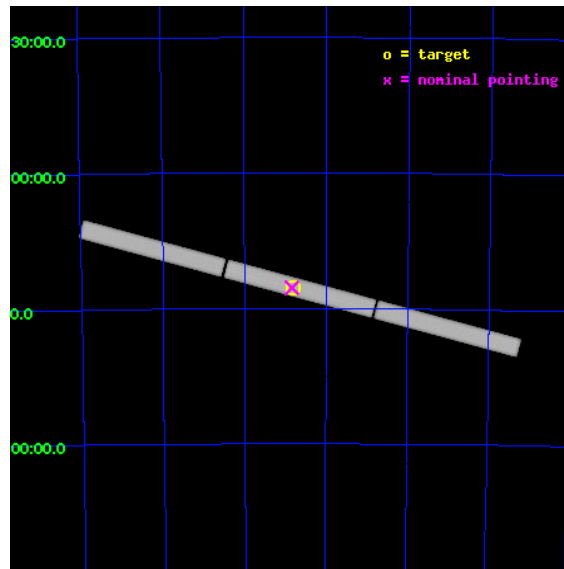
L2 Processing Date : Aug 22 2012

Contents

1	Front	2
2	OBI	3
2.1	OBI	3
2.1.1	Images	3
2.1.2	Parameters	4
2.1.3	Events	4
2.2	Compared Parameters	5
2.3	Aspect	6
2.4	Star Slots	9
2.4.1	Slot 3	9
2.4.2	Slot 4	10
2.4.3	Slot 5	11
2.4.4	Slot 6	12
2.4.5	Slot 7	13
2.5	FID Slots	14
2.5.1	Slot 0	14
2.5.2	Slot 1	15
2.5.3	Slot 2	16
3	Gratings	17
3.1	LETG Arm	17
A	Summary	19
A.1	Status	19
A.2	Comments	19

1 Front

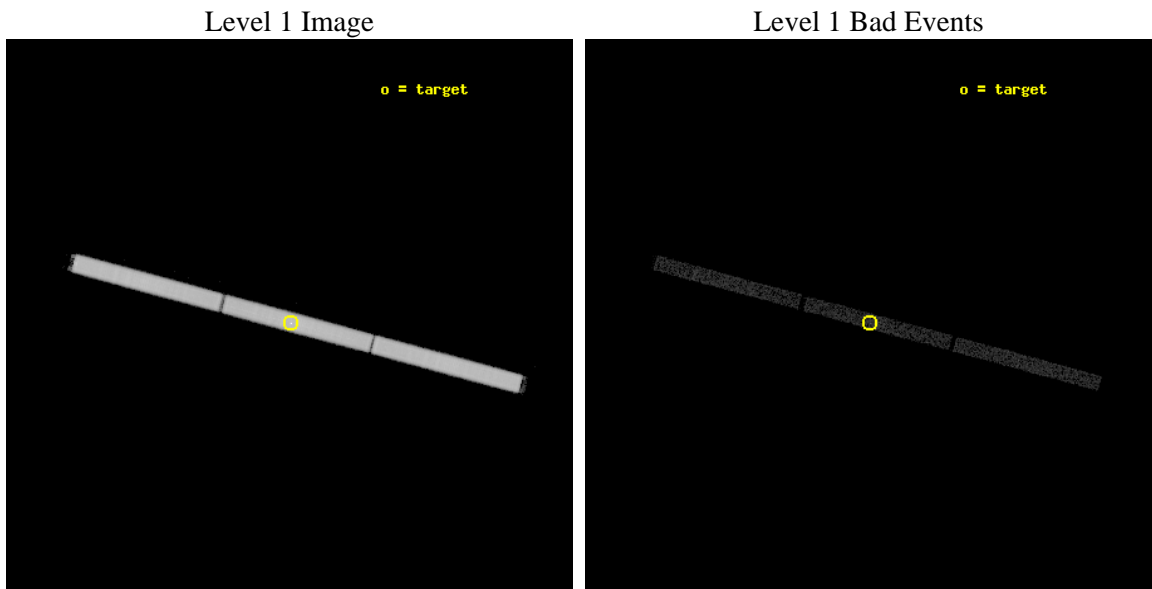
seq_num	300032	Sequence number
obs_id	958	Observation id
title	MULTIWAVELENGTH TOO OBSERVATIONS OF BRIGHT NOVAE IN OUTBURST	Propo
observer	Regents' Professor Sumner Starrfield	Principal investigator
object	V382 Velorum 1999	Source name
ra_targ	161.201535	Observer's specified target RA [deg]
dec_targ	-52.42517	Observer's specified target Dec [deg]
ra_nom	161.20975921884	Nominal RA [deg]
dec_nom	-52.424163406106	Nominal Dec [deg]
roll_nom	14.951401593028	Nominal Roll [deg]
revision	5	Processing version of data
ontime	24526.457144402	[s]
livedtime	24347.517925283	Ontime multiplied by DTCOR
l2events	1117992	Number of level 2 events



2 OBI

2.1 OBI

2.1.1 Images



2.1.2 Parameters

obi_num	0	Obi number	sched_exp_time	24403.135000	[s] Scheduled observation exposure time
ascdsver	8.4.5	Processing system revision	ontime	24526.457144402	[s]
caldbver	4.5.1.1	 	l1events	1647420	Number of level 1 events
date	2012-08-22T19:43:01	Date and time of file creation			
revision	5	Processing version of data			

2.1.3 Events

Level 1 Events

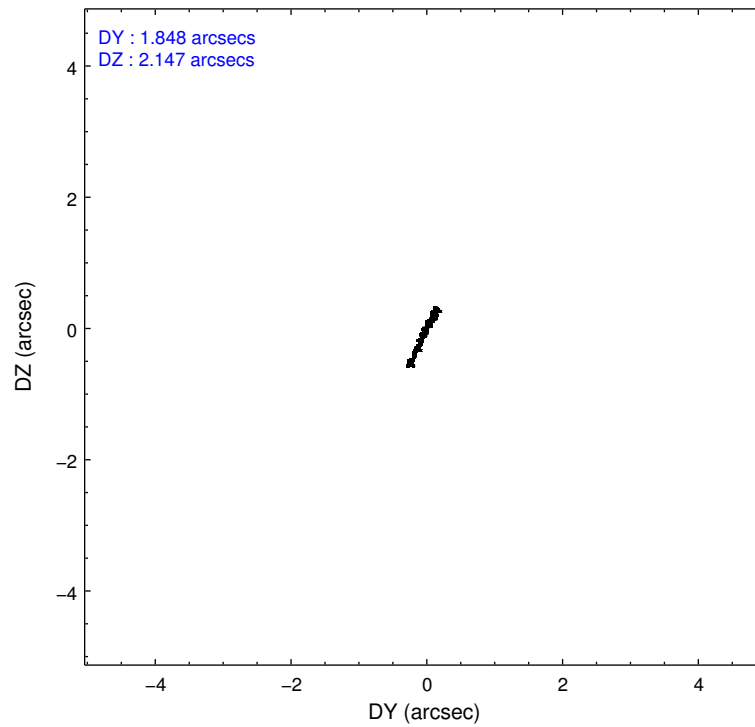
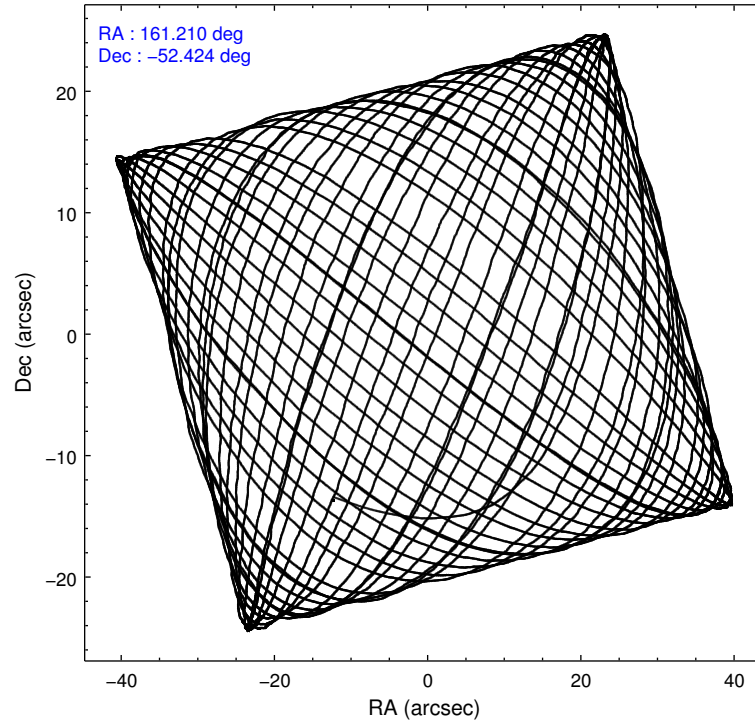
	segment 1	segment 2	segment 3
level 1 events	546078	551112	550230
rejected events	5742	18673	5736
rejected %	1%	3%	1%

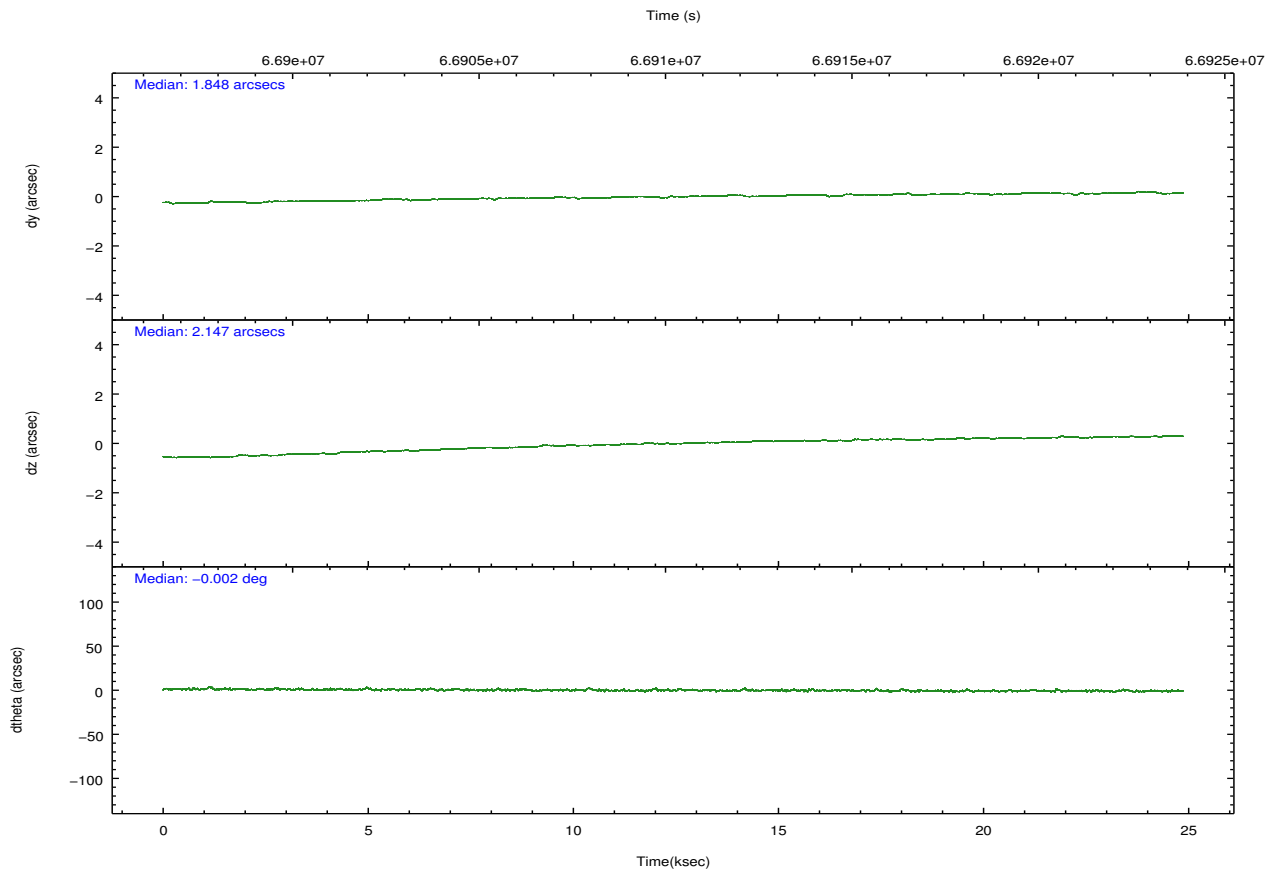
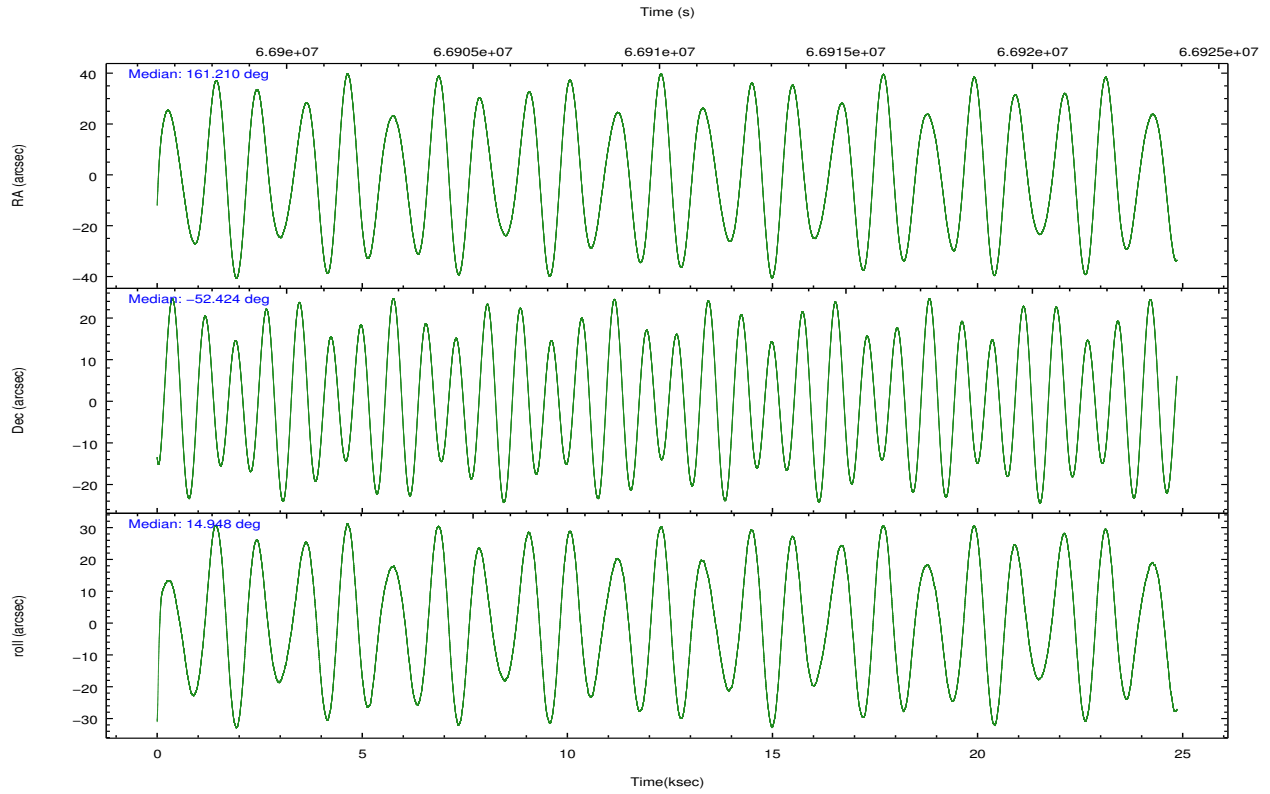
2.2 Compared Parameters

Parameter	Planned	Actual
Instrument	HRC	HRC
Detector	HRC-S	HRC-S
Grating	LETG	LETG
Data mode	OBSERVING	OBSERVING
Observation mode	POINTING	POINTING
[deg] Pointing RA	161.177475	161.2097592188431
[deg] Pointing Dec	-52.445266	-52.42416340610636
[deg] Pointing Roll	14.858486	14.95140159302785
[s] Window start time (MET)	66744064.184000	66744064.184000
[s] Window stop time (MET)	67694464.184000	67694464.184000
[mm] SIM focus pos	-1.429586	-1.428180813131781
[mm] SIM defocus	0.1037507710433287	0.1051558262725154
[mm] SIM translation stage pos	250.455976	250.466033080201
[mm] SIM translation stage offset	0	-0.01005468664627074
[s] Observation start time (MET)	66898229.184000	66896653.836934
Observation start date	2000-02-14T06:49:25	2000-02-14T06:24:13
[s] Observation end time (MET)	66922633.184000	66923348.425407
Observation end date	2000-02-14T13:36:09	2000-02-14T13:49:08

Parameter	Planned	Actual
Obspar format version number	7	7
Obspar file type	PREDICTED	ACTUAL
Obspar update status	NONE	UPDATED

2.3 Aspect





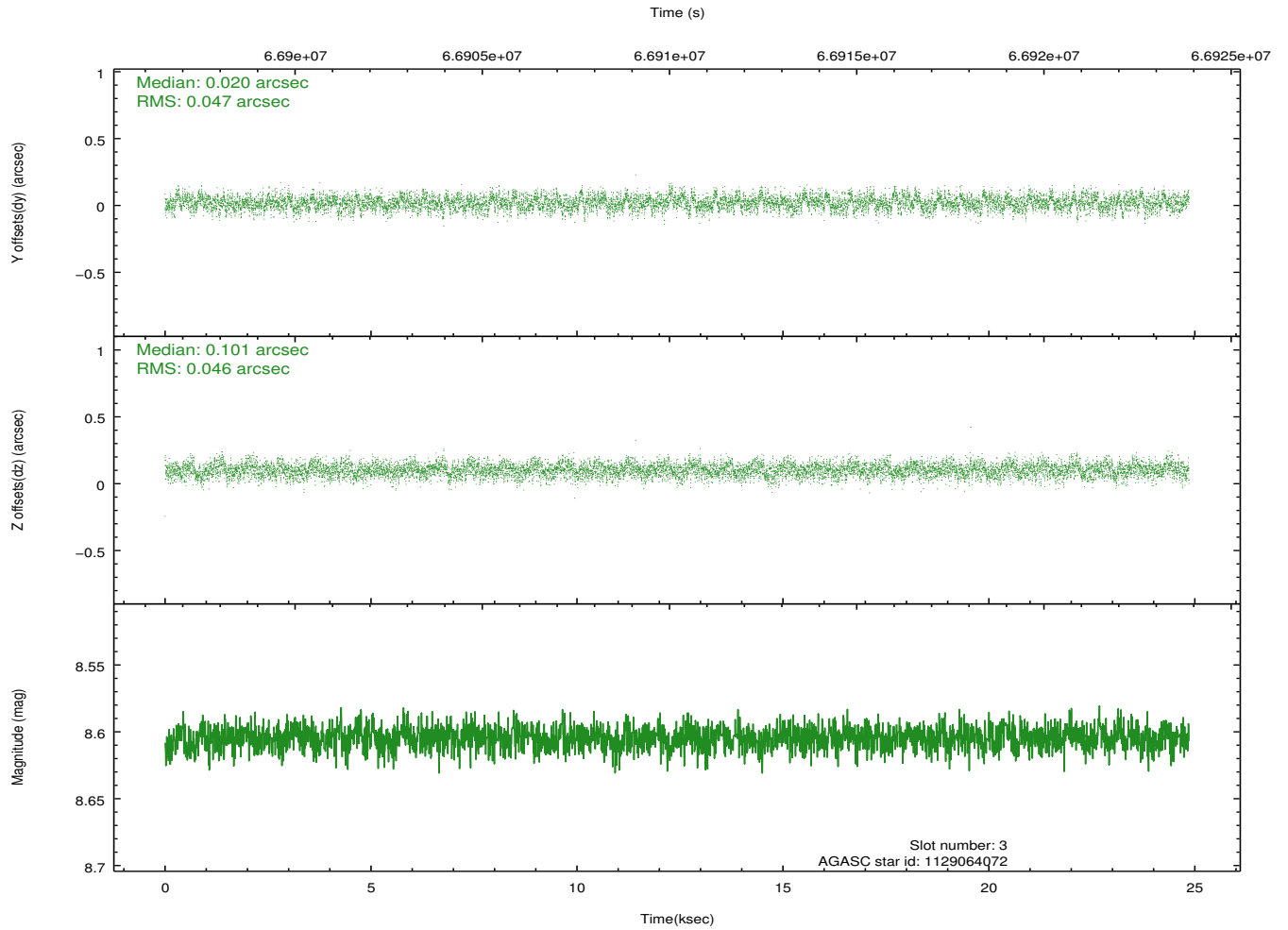
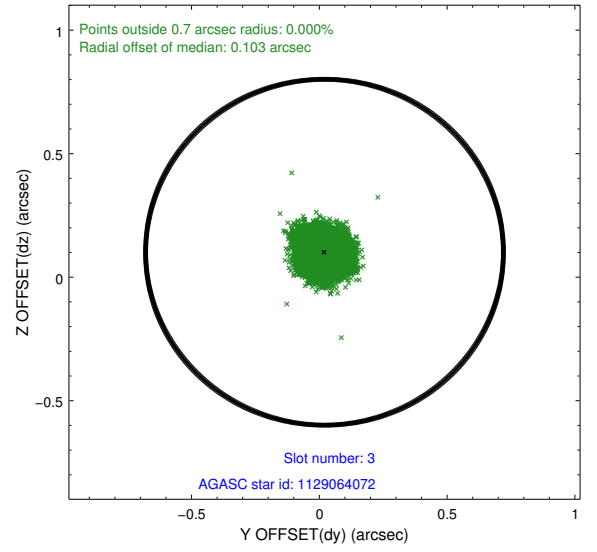
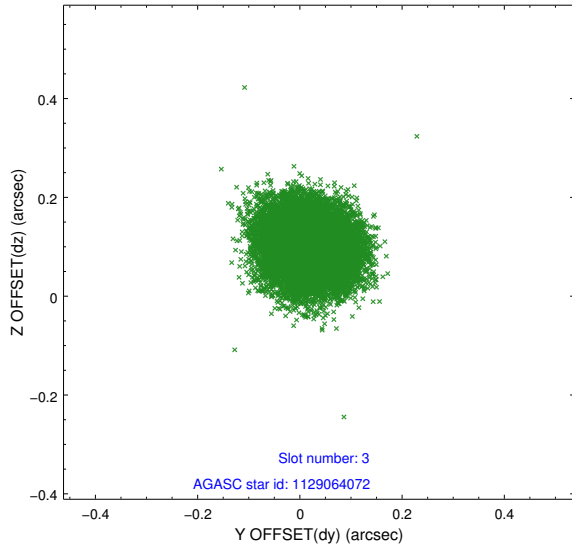
Slot Statistics

slot	status	id	mag	n_pts	med_dy	med_dz	dr1	dr2	ra	dec	mean_y	mean_z
0	FID	HRC-S-1	6.98	6063	0.109	-0.068	0.014	0.027	0.000000	0.000000	-1155.89	-450.41
1	FID	HRC-S-2	6.97	6063	0.143	-0.097	0.005	0.010	0.000000	0.000000	1243.63	-443.21
2	FID	HRC-S-3	7.00	6064	0.138	-0.137	0.013	0.027	0.000000	0.000000	-1158.35	578.98
3	GUIDE	1129064072	8.60	12127	0.020	0.101	0.071	0.113	160.586736	-52.974421	-1728.32	-1517.64
4	GUIDE	1129066216	8.86	12123	-0.051	0.074	0.099	0.157	162.393481	-52.810907	2213.44	-1971.98
5	GUIDE	1075996664	9.16	12122	0.131	-0.057	0.090	0.147	160.109972	-52.362272	-2196.59	873.83
6	GUIDE	1076107320	9.38	12118	0.040	-0.085	0.085	0.142	161.566916	-52.224067	1032.78	547.63
7	GUIDE	1076112824	9.06	12124	-0.141	-0.036	0.080	0.132	161.569162	-51.921862	1322.25	1596.44

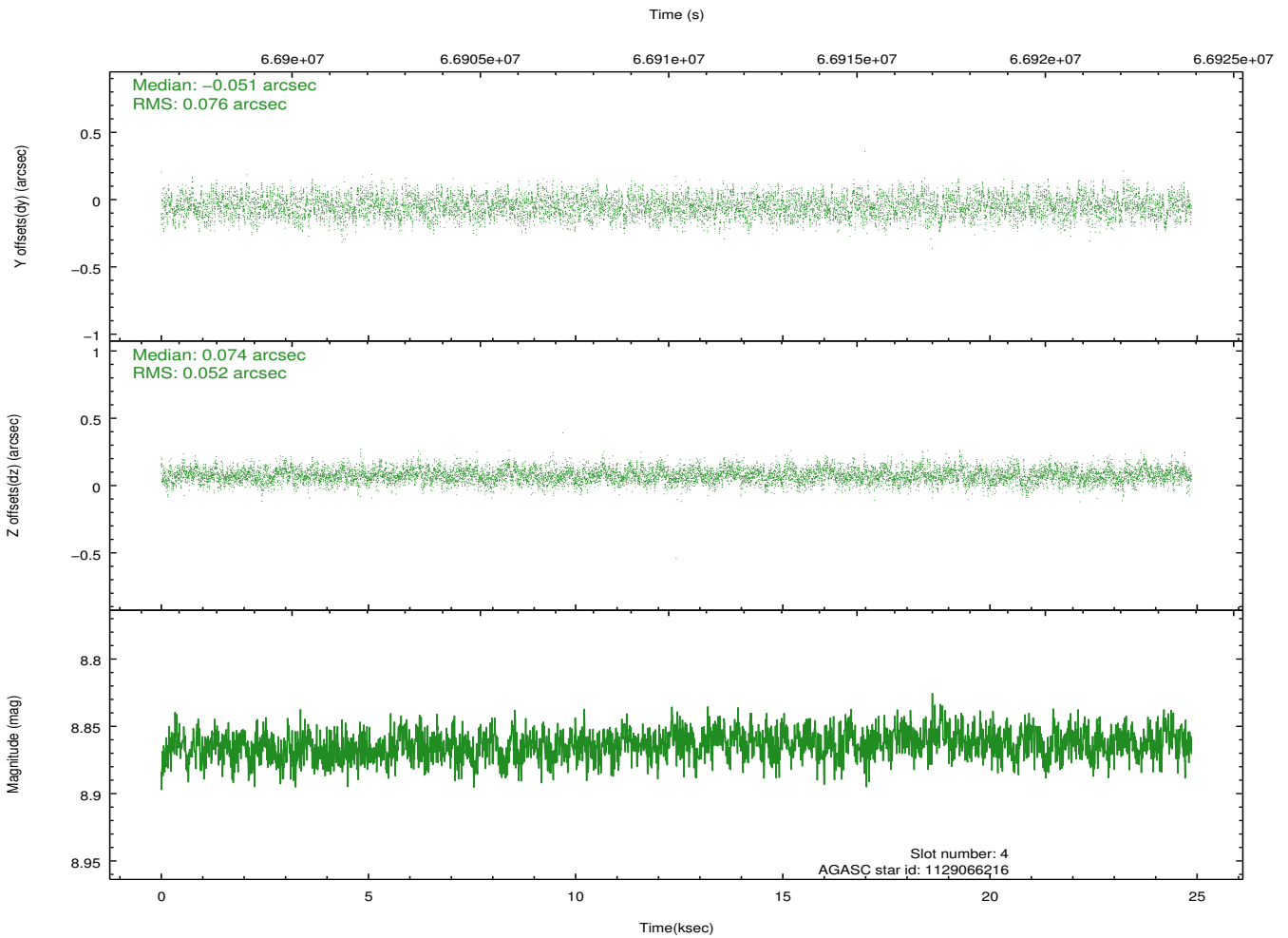
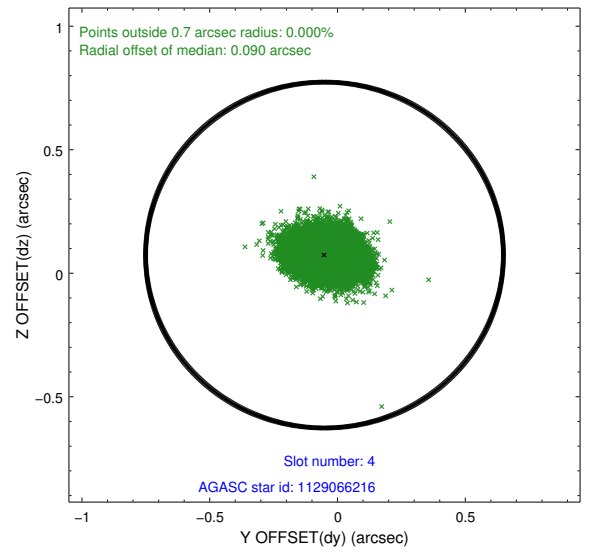
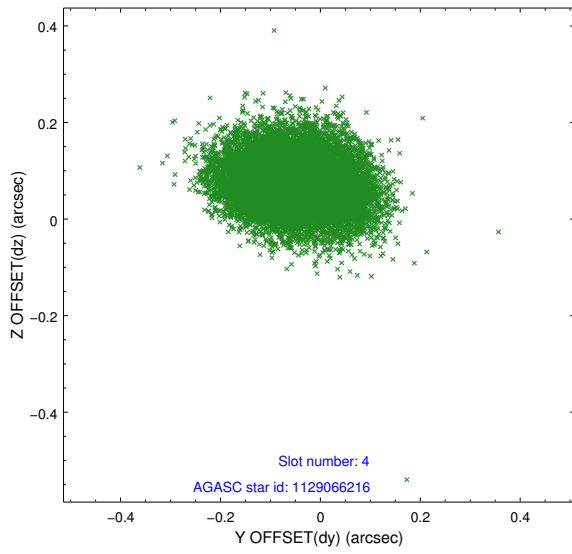
∞

2.4 Star Slots

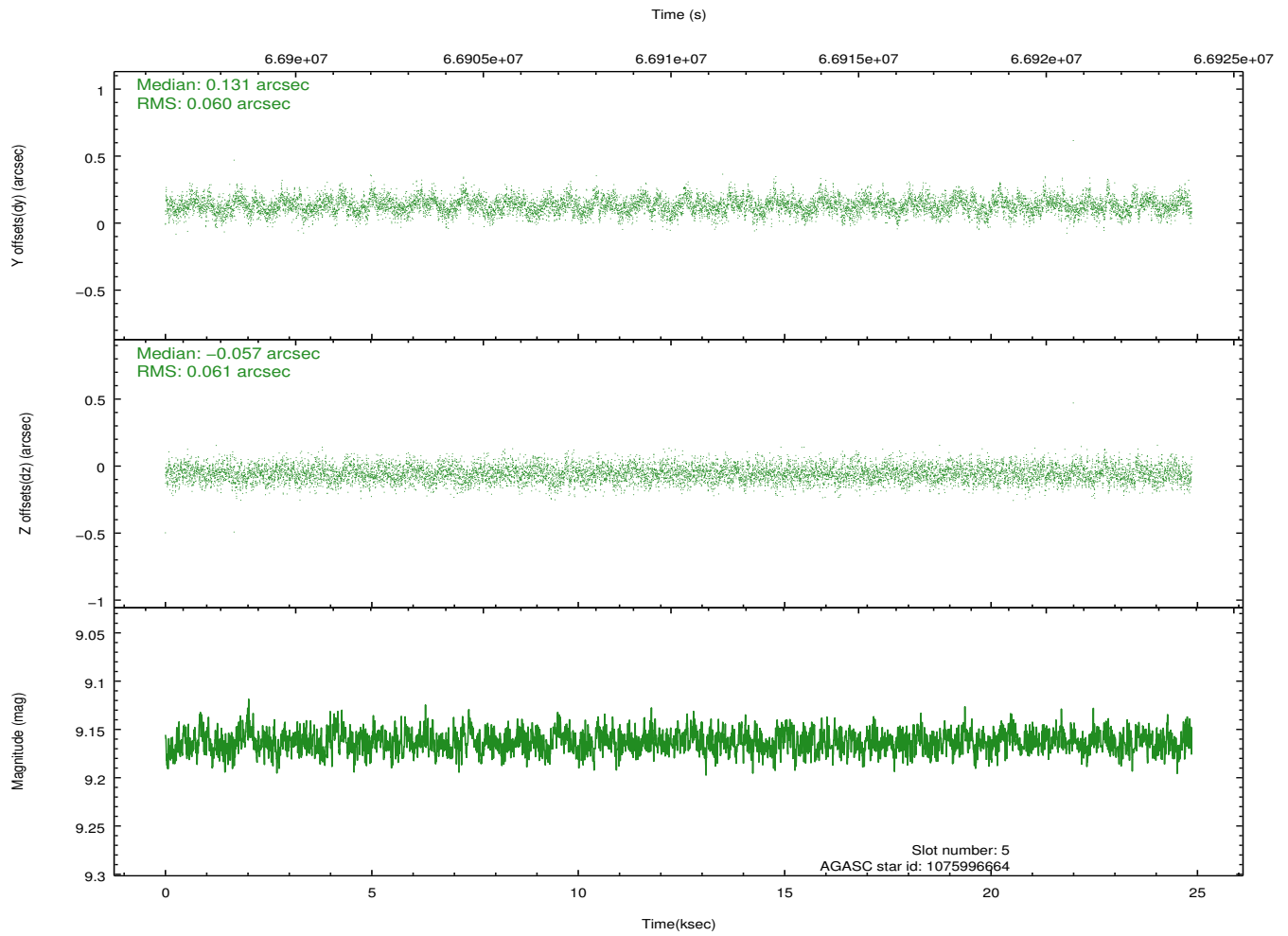
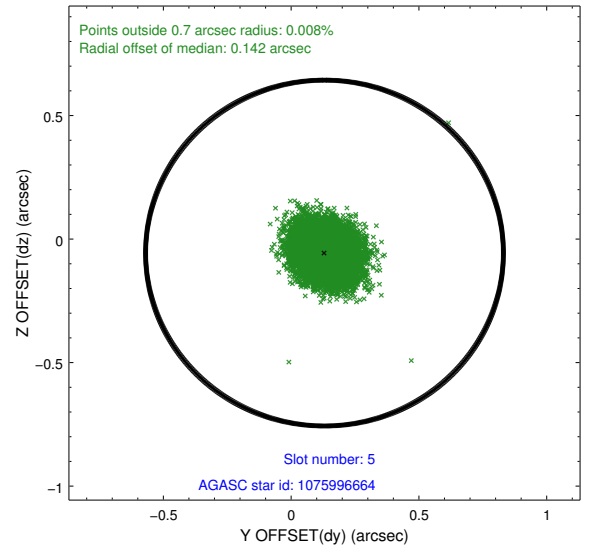
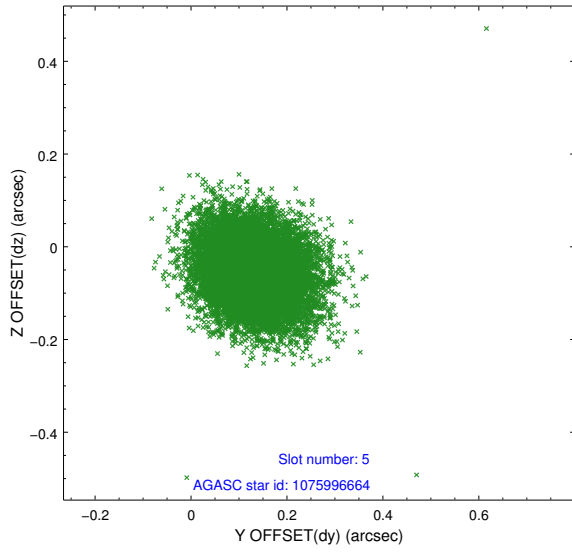
2.4.1 Slot 3



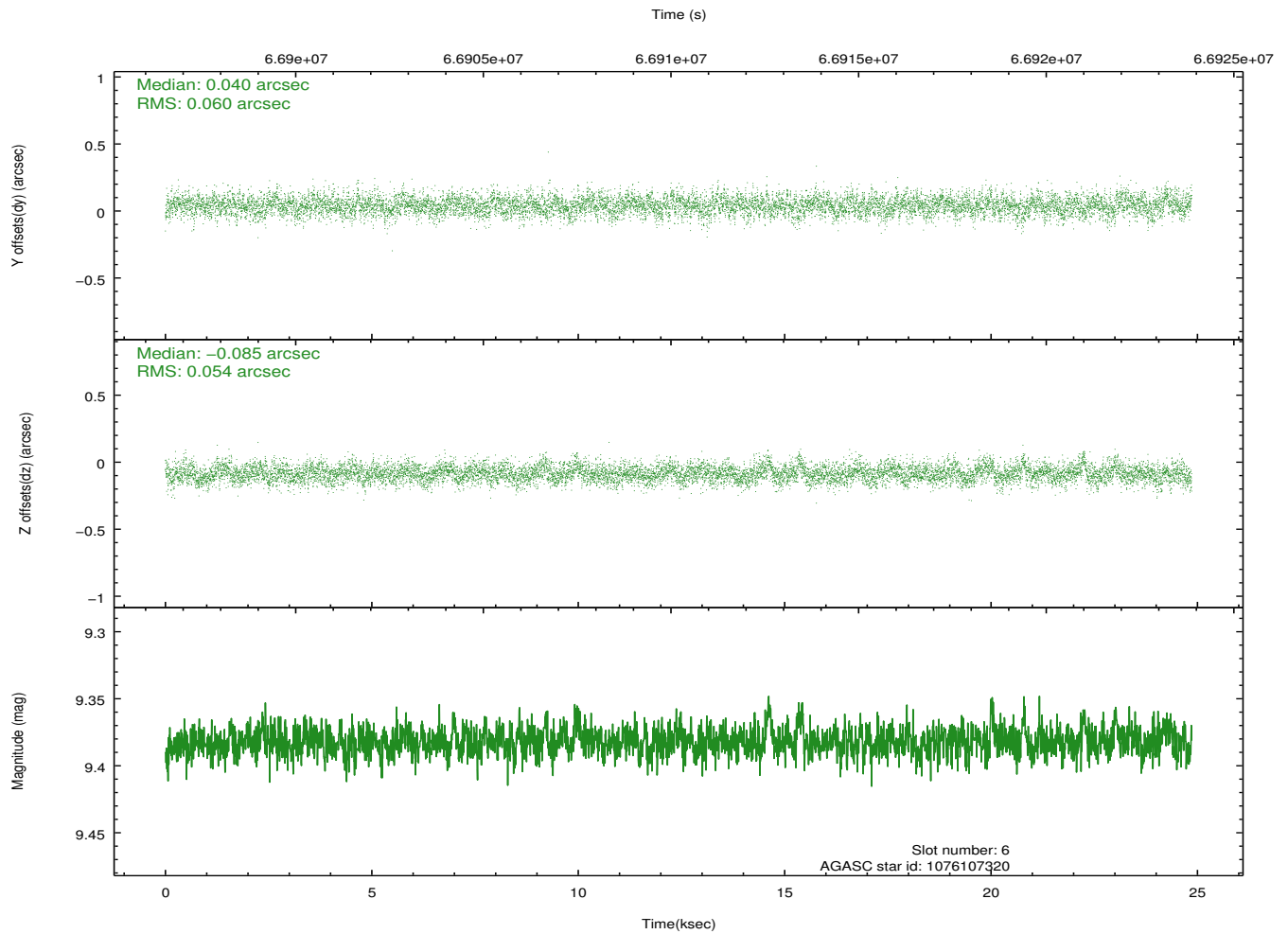
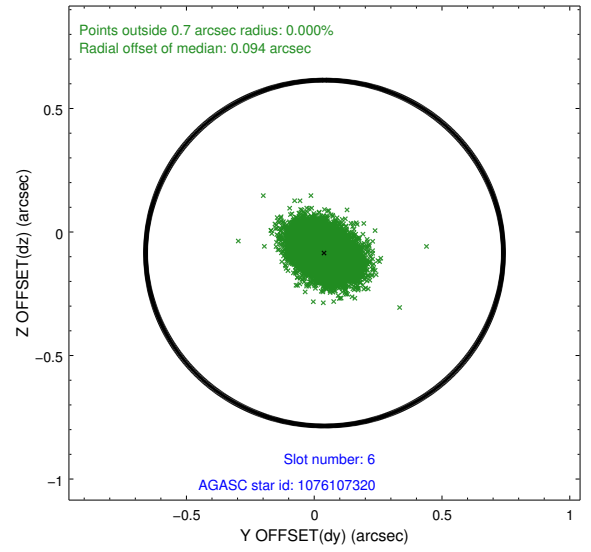
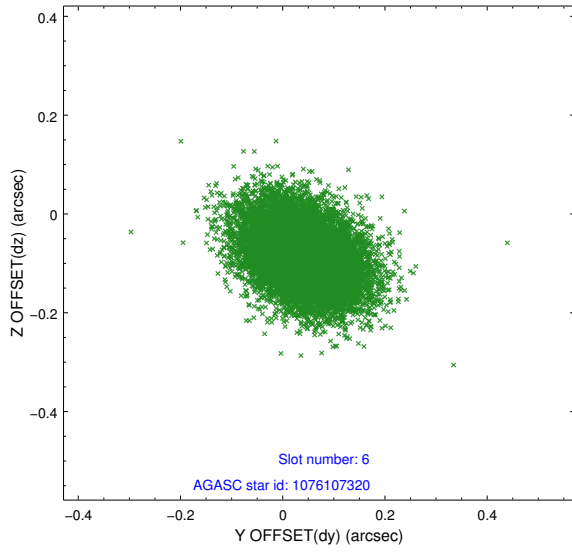
2.4.2 Slot 4



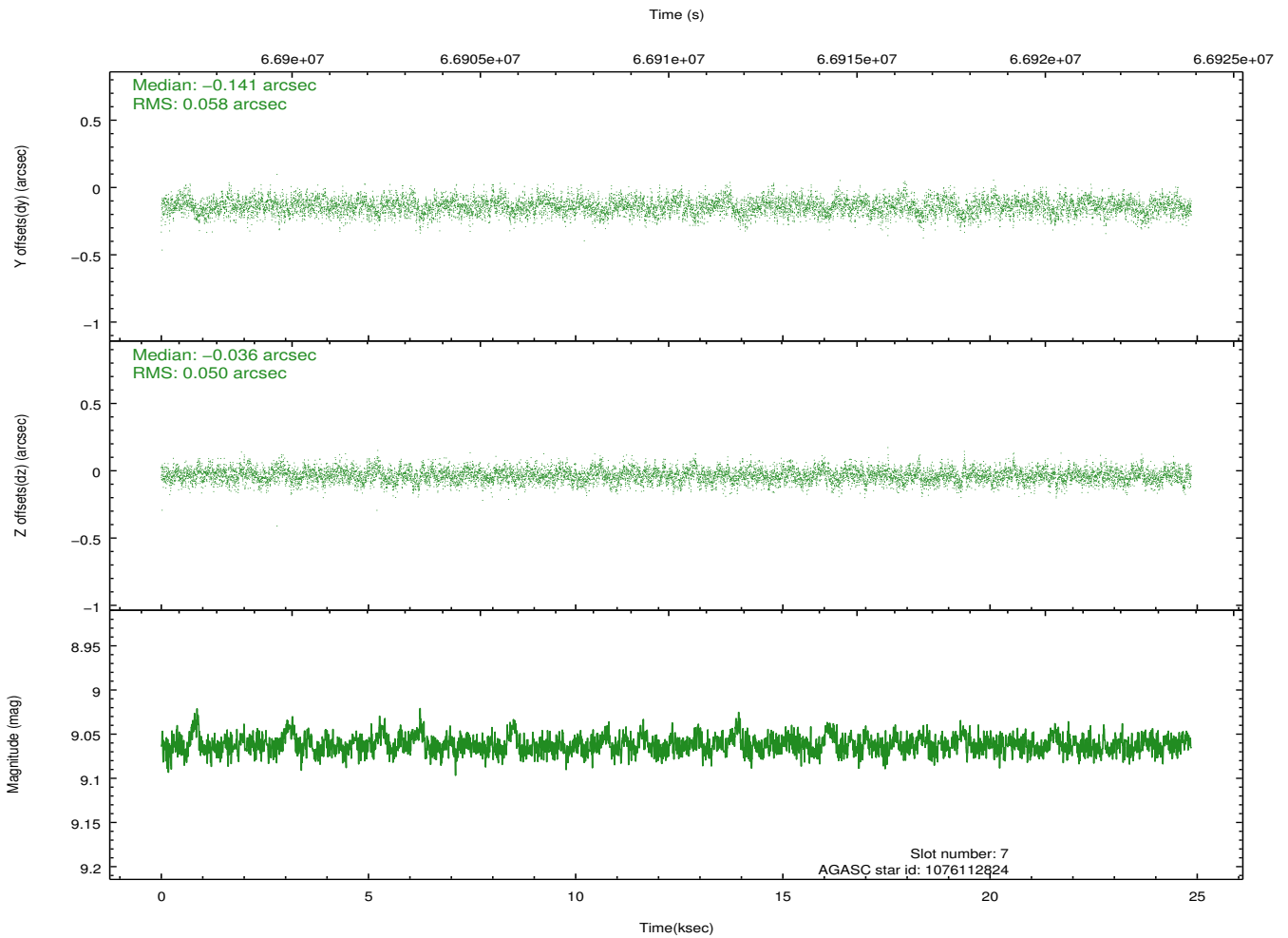
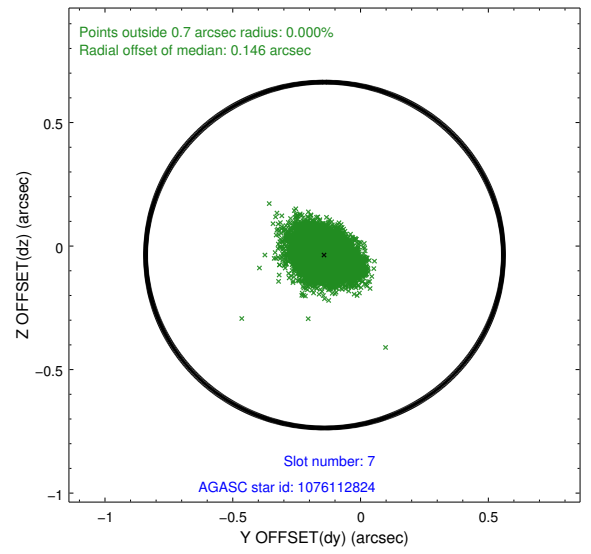
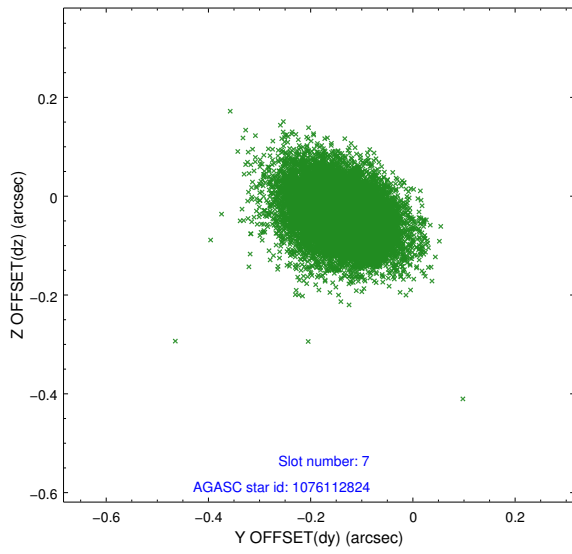
2.4.3 Slot 5



2.4.4 Slot 6

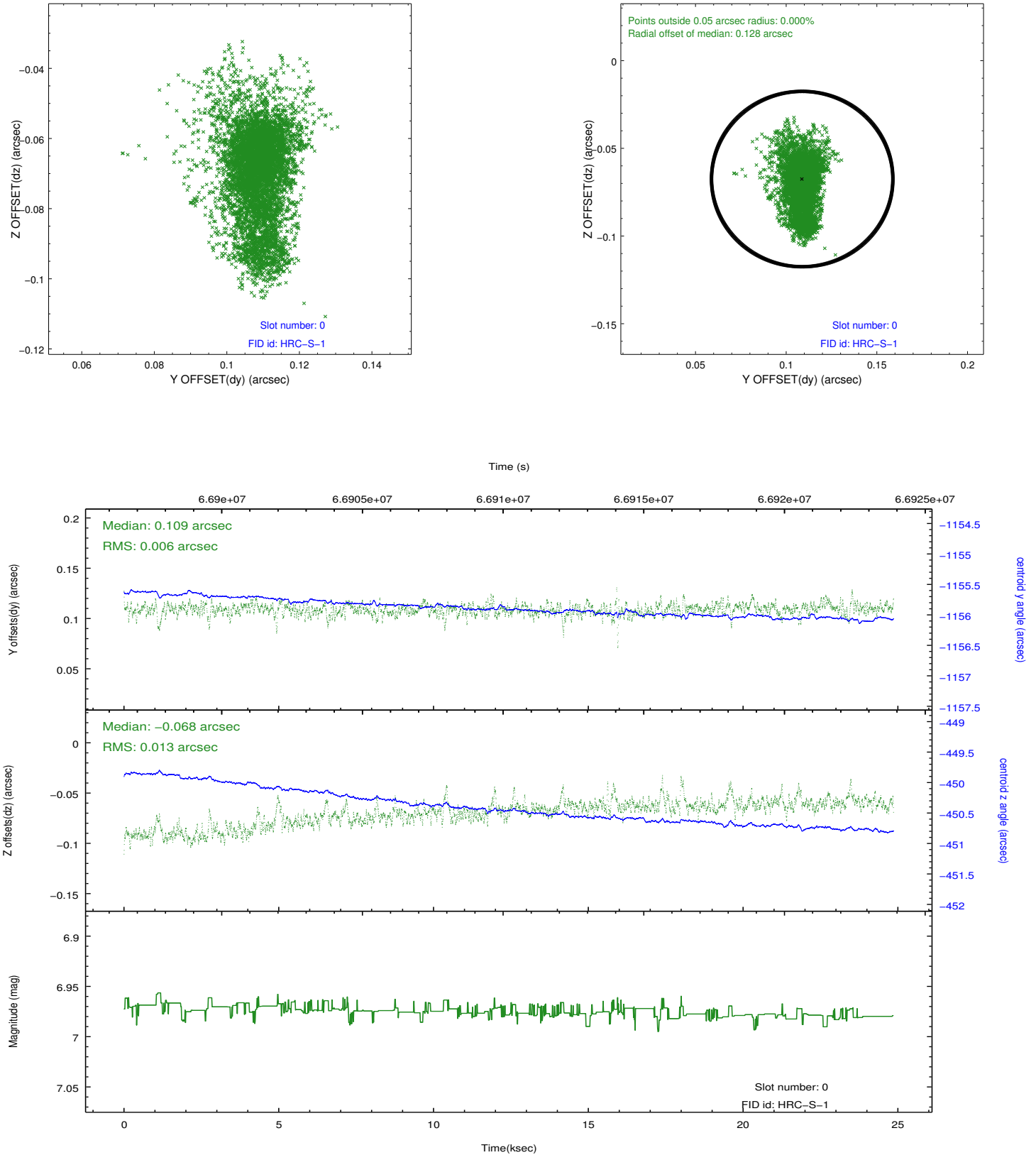


2.4.5 Slot 7

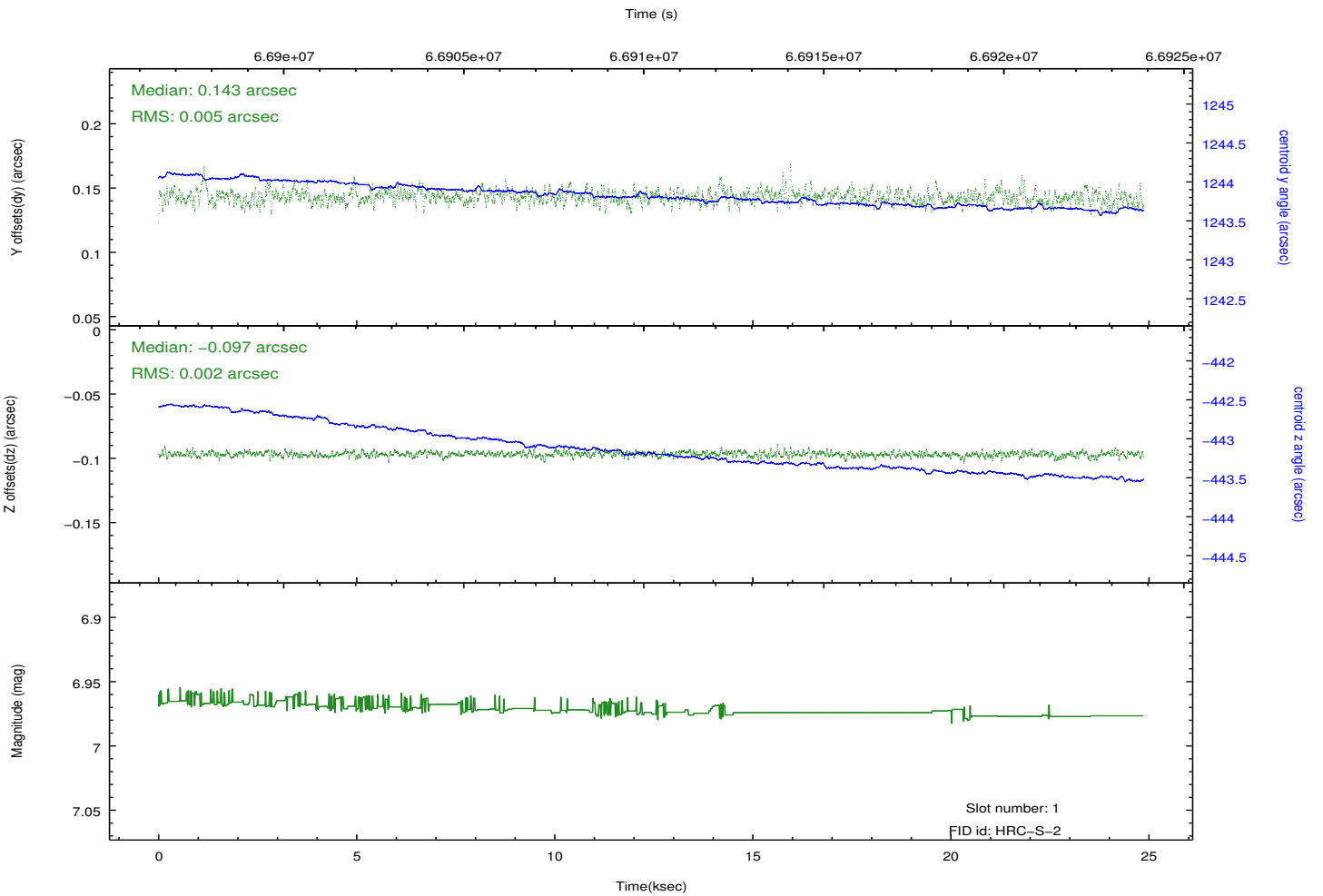
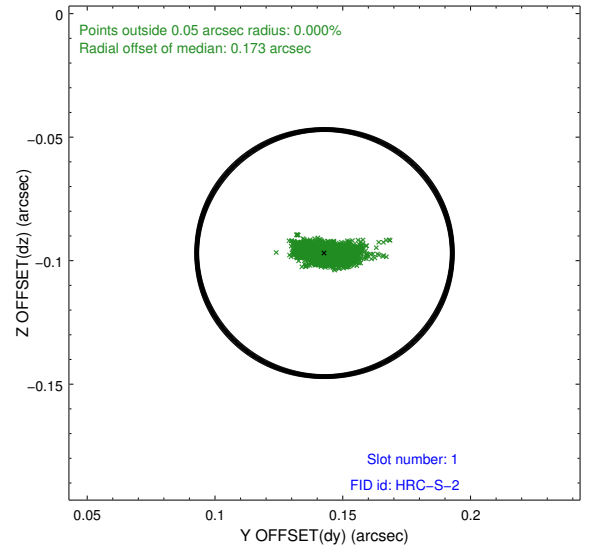
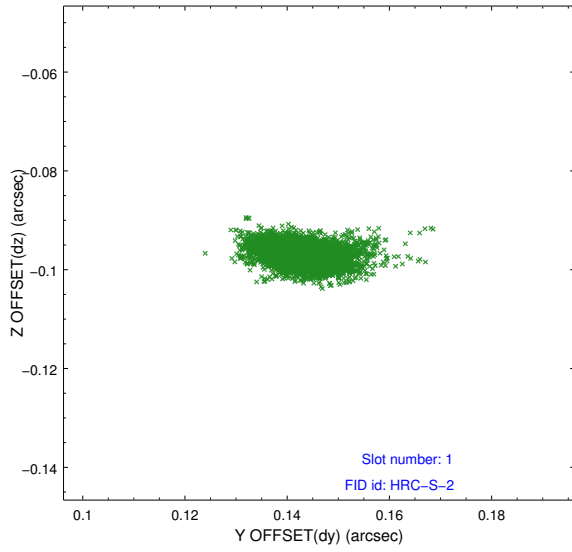


2.5 FID Slots

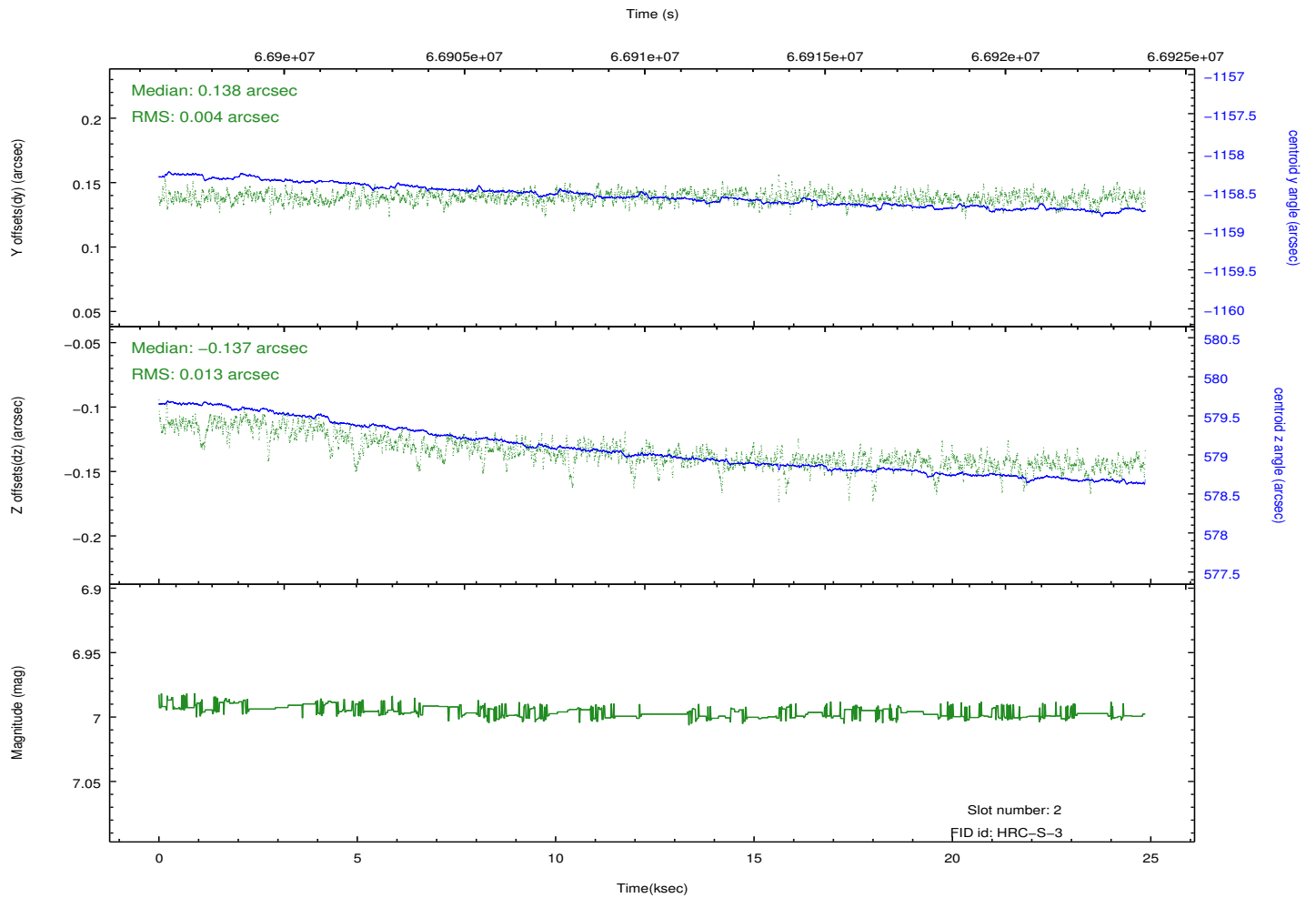
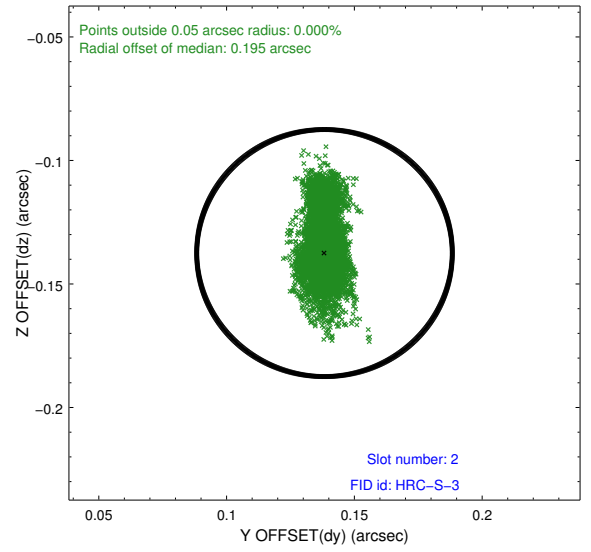
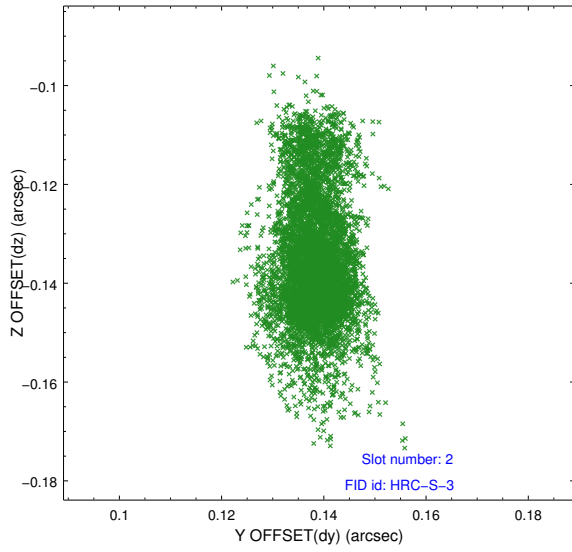
2.5.1 Slot 0



2.5.2 Slot 1

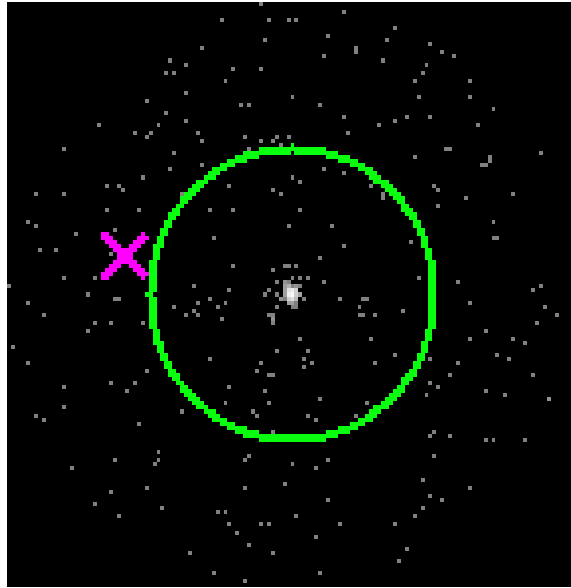


2.5.3 Slot 2

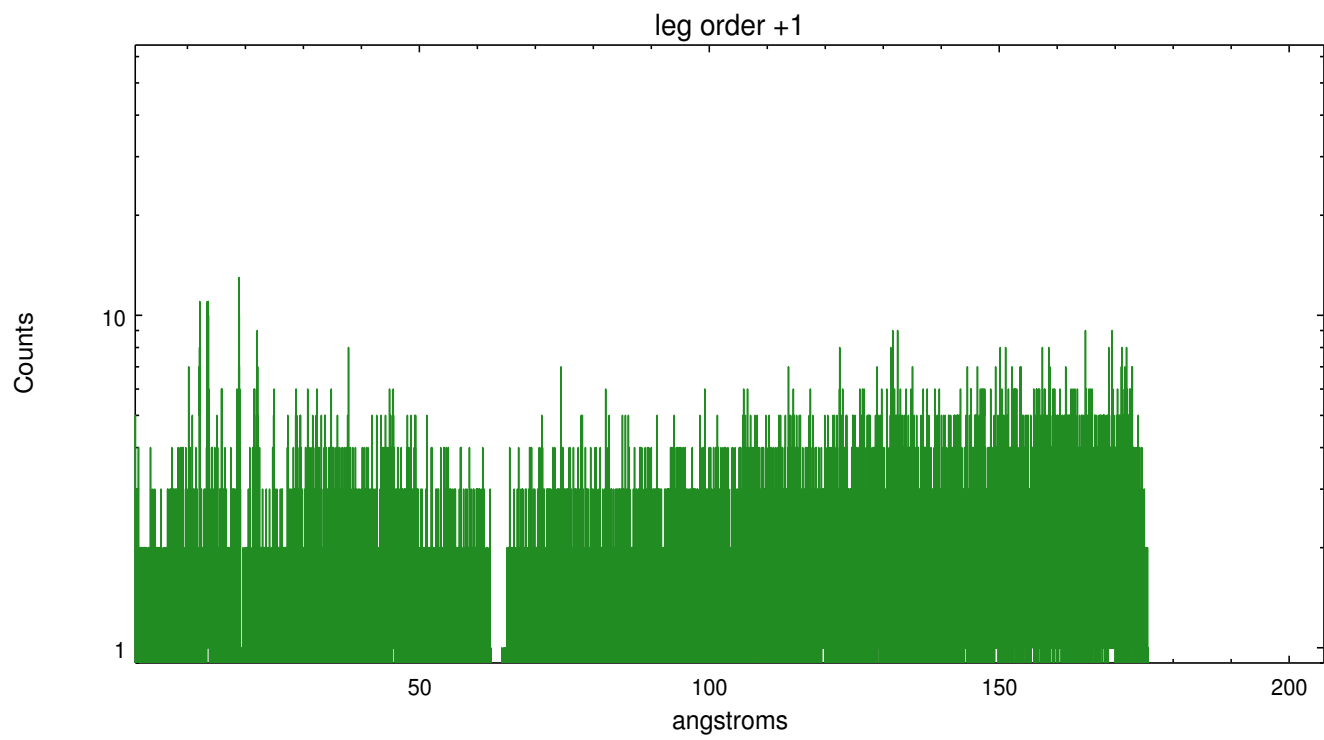
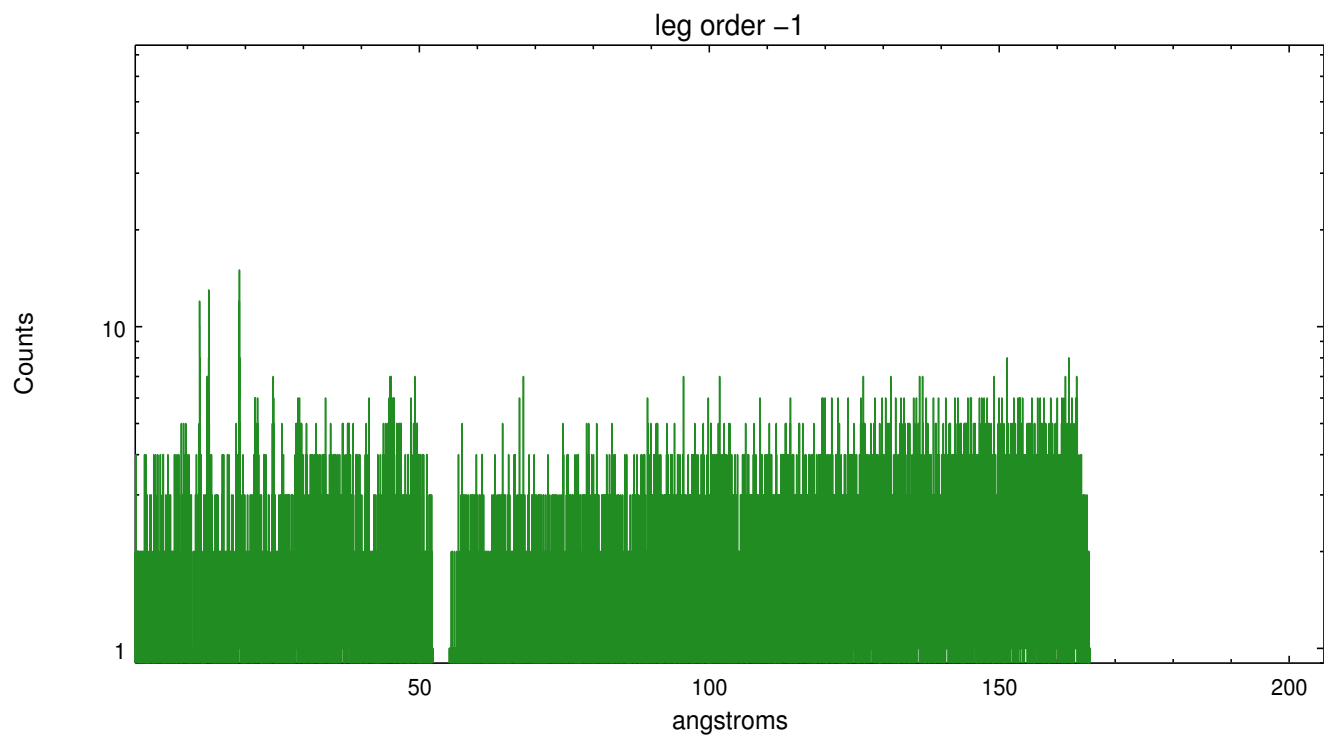


3 Gratings

3.1 LETG Arm



LETG Zero Order



A Summary

A.1 Status

V&V Scientist	Joy Nichols
V&V Date (YYYY-MM-DD)	2012.08.23
V&V Edition	1
V&V Disposition and Status	OK
V&V Charge Time	24.516

A.2 Comments