

V&V Reference Report

L2 ASCDS Version : 8.4.4

Observation 9588 - L2 Version 2
Chandra X-Ray Center

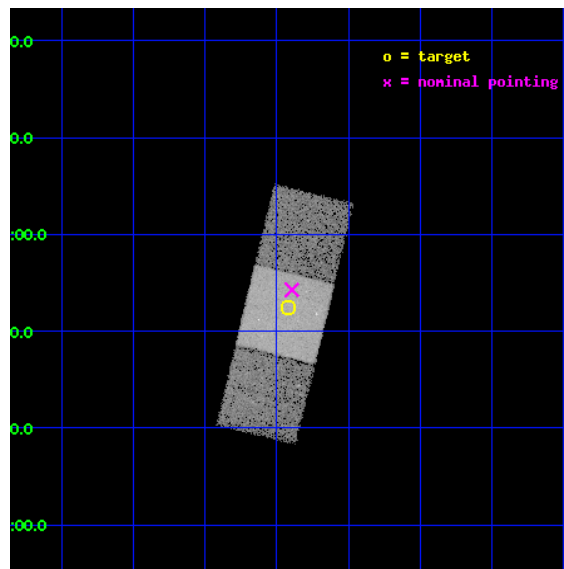
L2 Processing Date : May 1 2012

Contents

1	Front	2
2	OBI	3
2.1	OBI	3
2.1.1	Images	3
2.1.2	Bias	3
2.1.3	Parameters	4
2.1.4	Events	4
2.2	Compared Parameters	5
2.3	Aspect	6
2.4	Star Slots	9
2.4.1	Slot 3	9
2.4.2	Slot 4	10
2.4.3	Slot 5	11
2.4.4	Slot 6	12
2.4.5	Slot 7	13
2.5	FID Slots	14
2.5.1	Slot 0	14
2.5.2	Slot 1	15
2.5.3	Slot 2	16
A	Summary	17
A.1	Status	17
A.2	Comments	17

1 Front

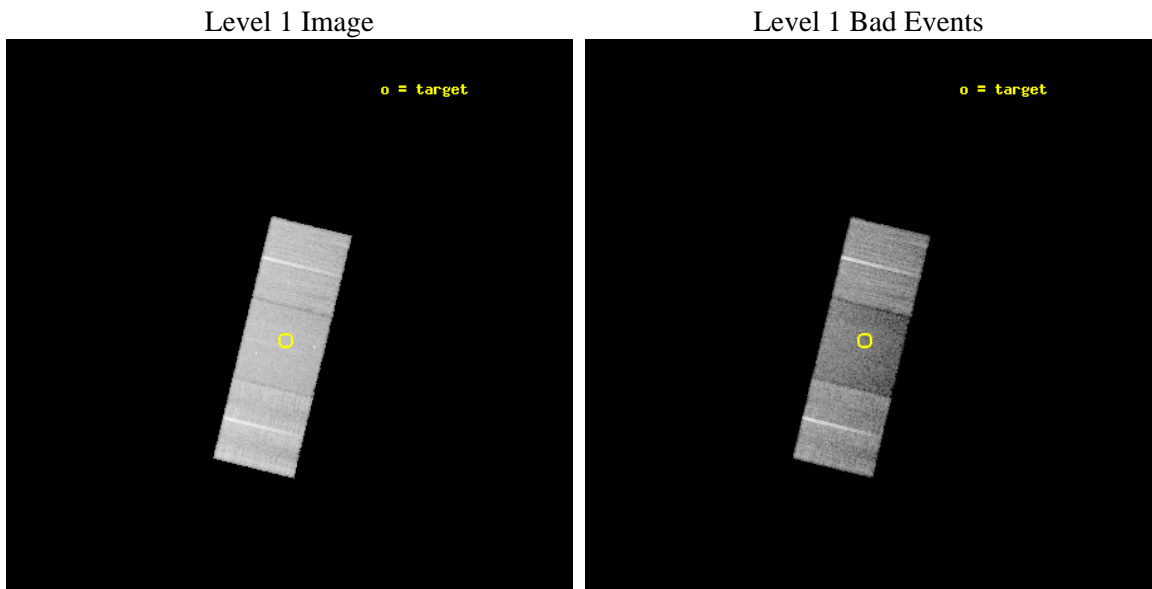
seq_num	600608	Sequence number
obs_id	9588	Observation id
title	Compact Galaxy Groups: Building Blocks of Galaxy Clusters and Massive Ellipticals	Proposal title
observer	Professor Gordon Garmire	Principal investigator
object	HCG 7	Source name
dtcycle	0	
cycle	P	events from which exps? Prim/Second/Both
ra_targ	9.854167	Observer's specified target RA [deg]
dec_targ	0.874722	Observer's specified target Dec [deg]
ra_nom	9.8486412645863	Nominal RA [deg]
dec_nom	0.90459292146421	Nominal Dec [deg]
roll_nom	103.65671592553	Nominal Roll [deg]
revision	2	Processing version of data
ontime	16922.900130153	Sum of GTIs [s]
livetime	16701.789981494	Livetime [s]
ontime6	16922.900130153	Sum of GTIs [s]
ontime7	16922.900130153	Sum of GTIs [s]
ontime8	16919.759140015	Sum of GTIs [s]
l2events	81722	Number of level 2 events



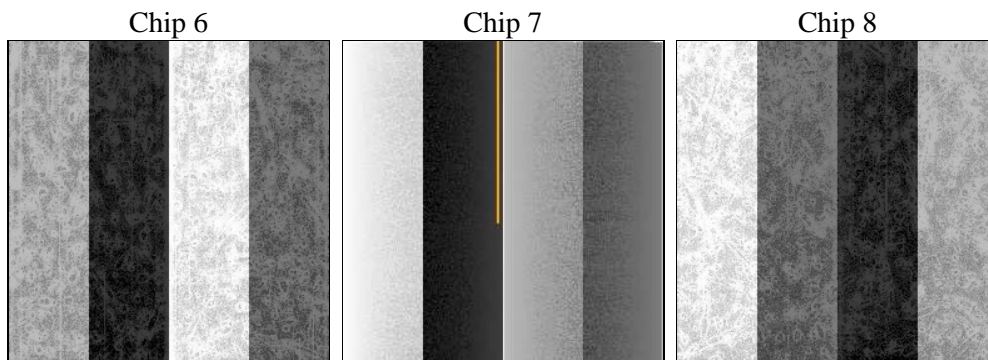
2 OBI

2.1 OBI

2.1.1 Images



2.1.2 Bias



2.1.3 Parameters

obi_num	0	Obi number	sched_exp_time	16800.000000	[s] Scheduled observation exposure time
ascdsver	8.4.4	Processing system revision	ontime	16922.900130153	Sum of GTIs [s]
caldsver	4.4.9	 	ontime6	16922.900130153	Sum of GTIs [s]
date	2012-05-01T05:11:38	Date and time of file creation	ontime7	16922.900130153	Sum of GTIs [s]
revision	2	Processing version of data	ontime8	16919.759140015	Sum of GTIs [s]
			l1events	434164	Number of level 1 events

2.1.4 Events

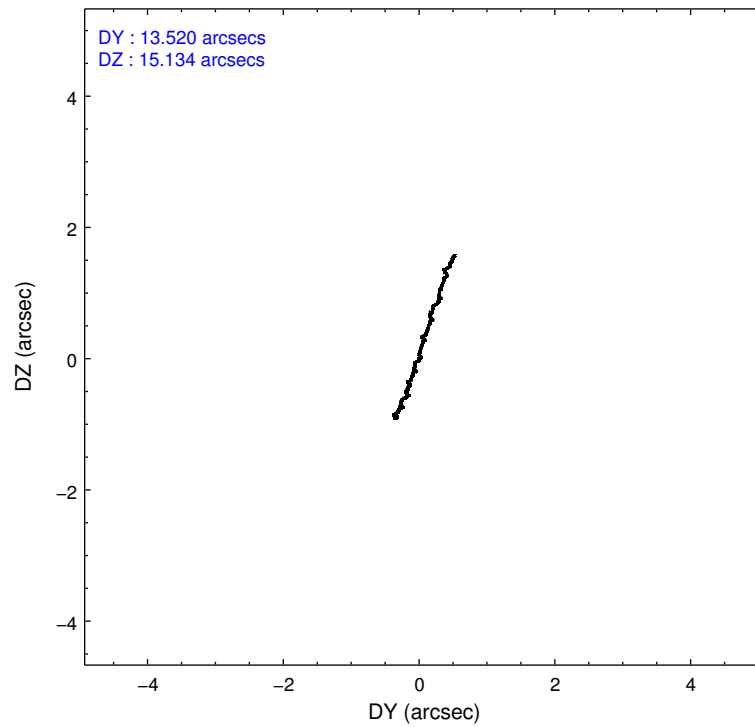
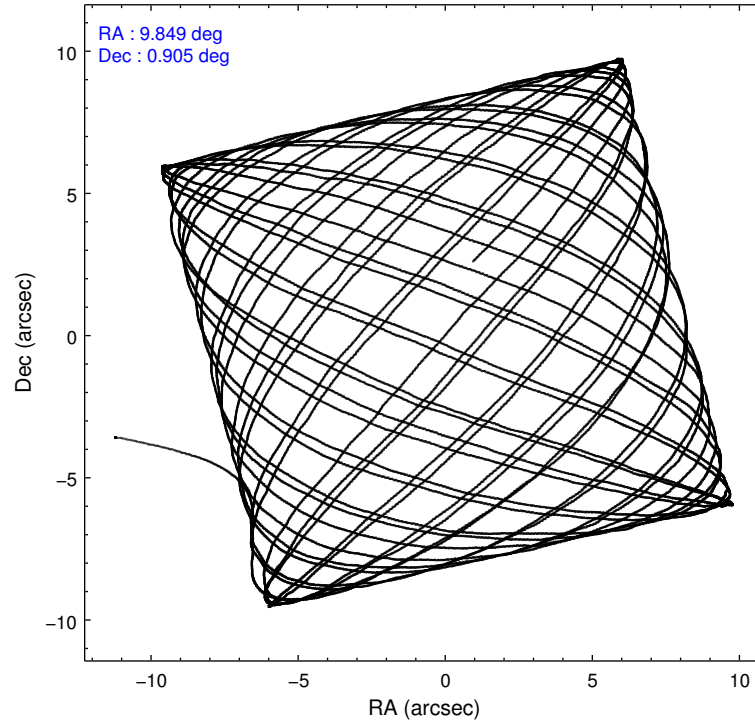
	ccd 6	ccd 7	ccd 8
level 1 events	137689	129337	167138
rejected events	124690	69040	127832
rejected %	90%	53%	76%

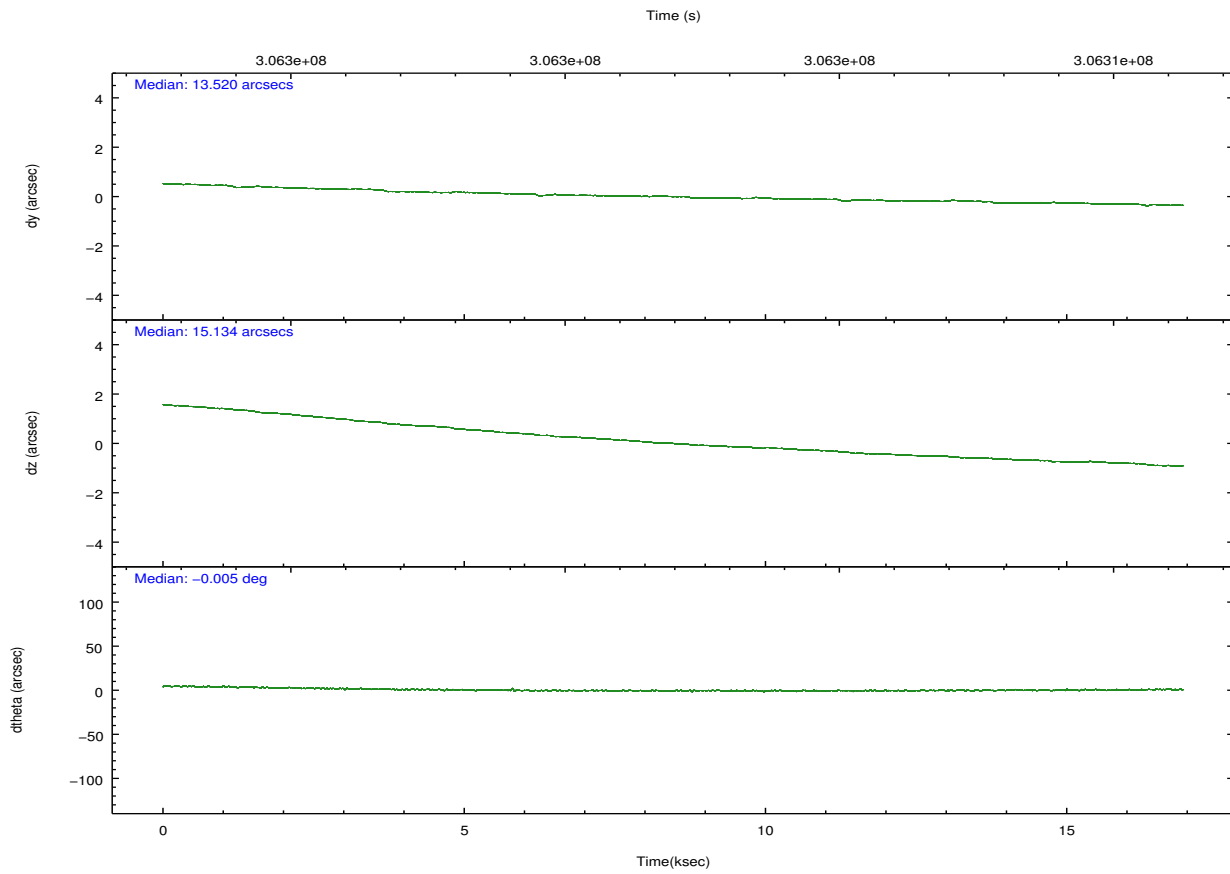
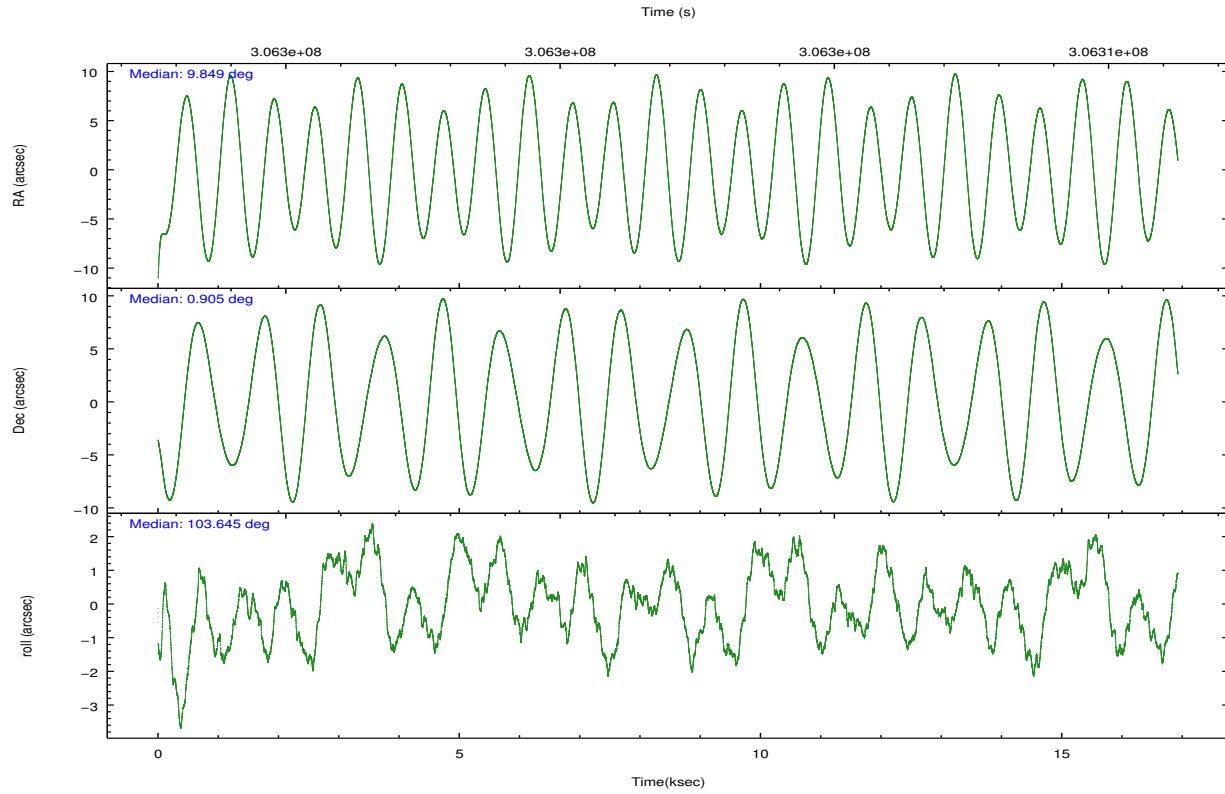
	ccd 6	ccd 7	ccd 8
grade 0 events	5052	6728	11576
	3%	5%	6%
grade 1 events	65	202	136
	0%	0%	0%
grade 2 events	3013	13401	9823
	2%	10%	5%
grade 3 events	1509	5988	4615
	1%	4%	2%
grade 4 events	1506	6039	4340
	1%	4%	2%
grade 5 events	4601	13627	6868
	3%	10%	4%
grade 6 events	2711	31656	11369
	1%	24%	6%
grade 7 events	119232	51696	118411
	86%	39%	70%

2.2 Compared Parameters

Parameter	Planned	Actual	Parameter	Planned	Actual
Instrument	ACIS	ACIS	Obspar format version number	7	7
Detector	ACIS-678	ACIS-678	Obspar file type	PREDICTED	ACTUAL
Grating	NONE	NONE	Obspar update status	NONE	UPDATED
Data mode	VFAINT	VFAINT	Number of optional ACIS chips dropped	0	0
Observation mode	POINTING	POINTING	On-chip summing requested	N	N
[deg] Pointing RA	9.867797	9.848641264586291	Subarray requested	NONE	NONE
[deg] Pointing Dec	0.885074	0.9045929214642137	Alternating exposures requested	N	N
[deg] Pointing Roll	103.499792	103.6567159255298	[s] Primary exposure time	0.000000	3.1
[mm] SIM focus pos	-0.684267	-0.6828225247311905			
[mm] SIM defocus	0	0.001444936568705701			
[mm] SIM translation stage pos	-190.132523	-190.1425803651734			
[mm] SIM translation stage offset	0	0.01005778216563158			
[s] Observation start time (MET)	306293634.184000	306292292.44434			
Observation start date	2007-09-16T01:32:49	2007-09-16T01:11:32			
[s] Observation end time (MET)	306310434.184000	306311392.29526			
Observation end date	2007-09-16T06:12:49	2007-09-16T06:29:52			
Read mode	TIMED	TIMED			

2.3 Aspect



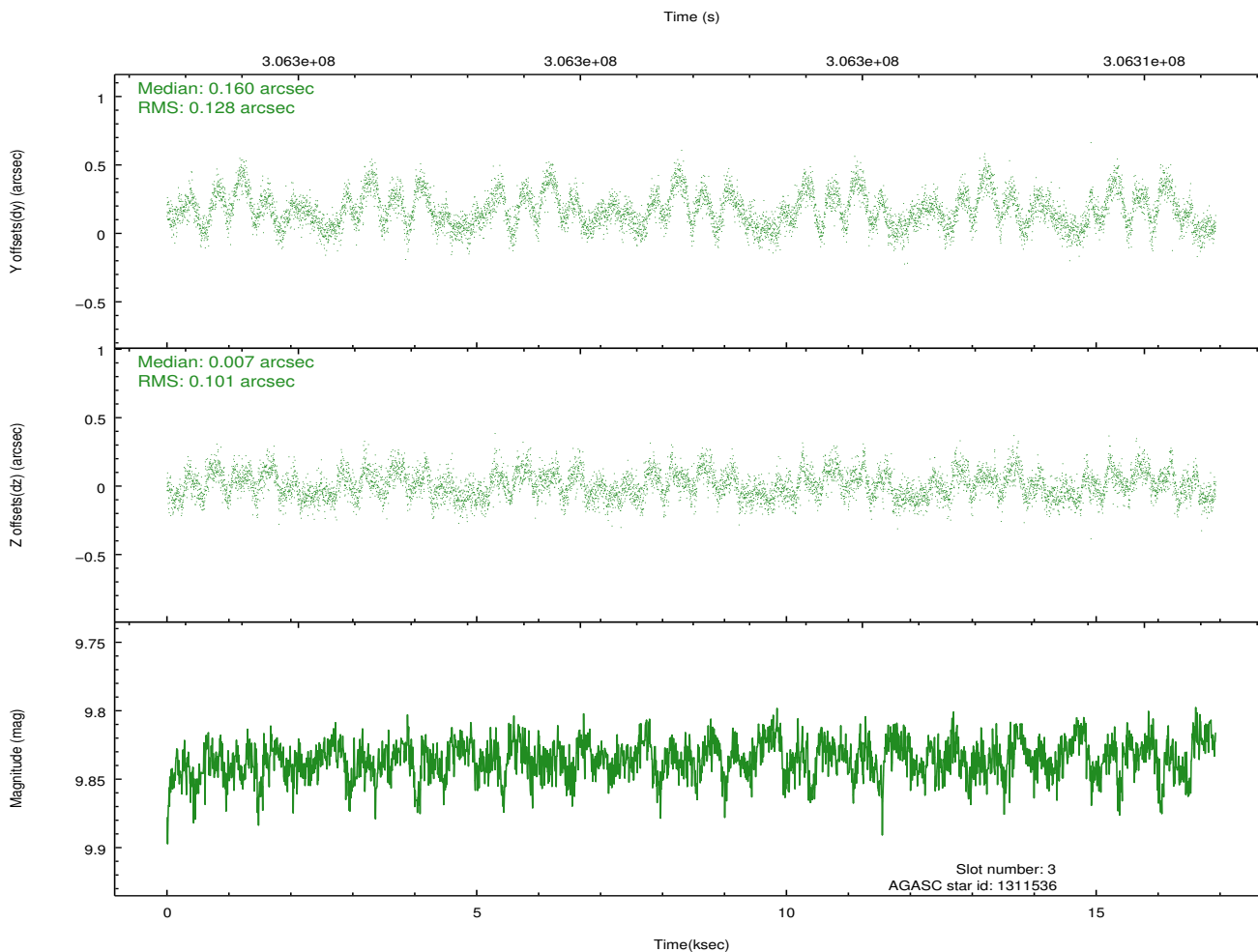
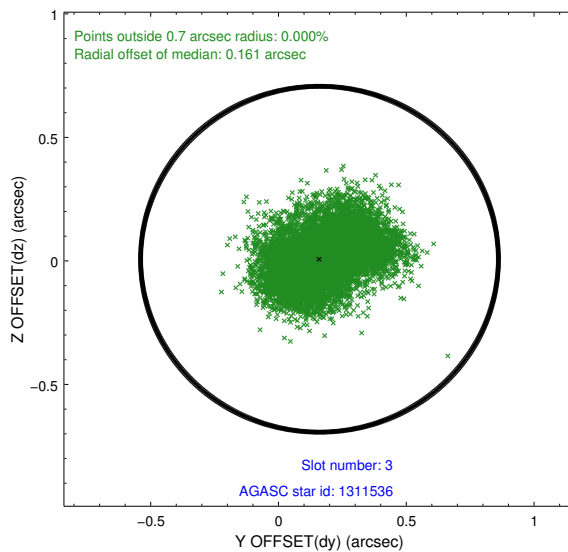
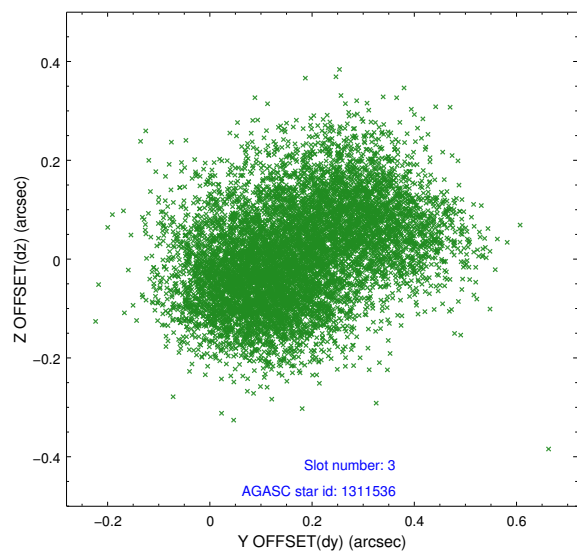


Slot Statistics

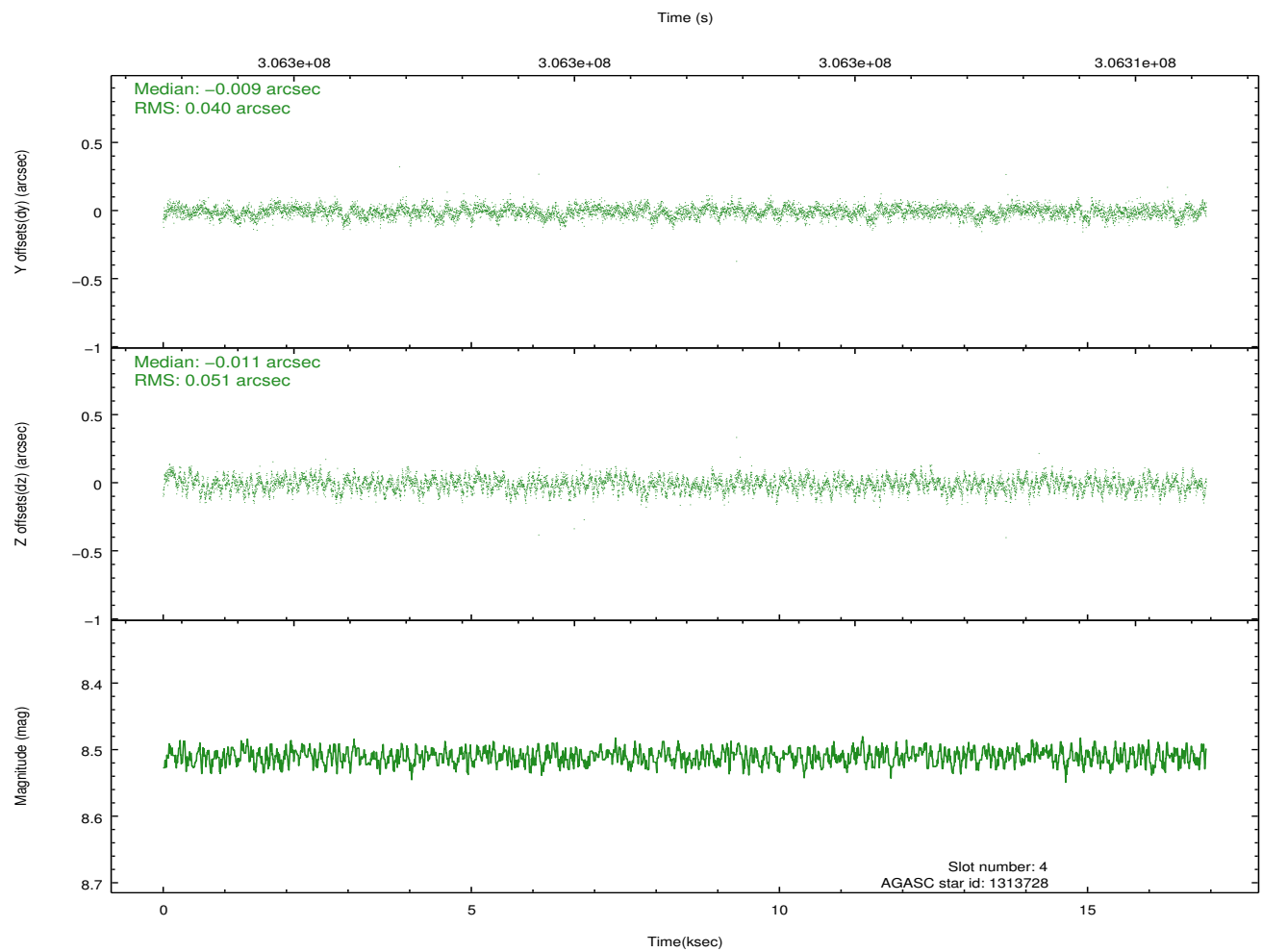
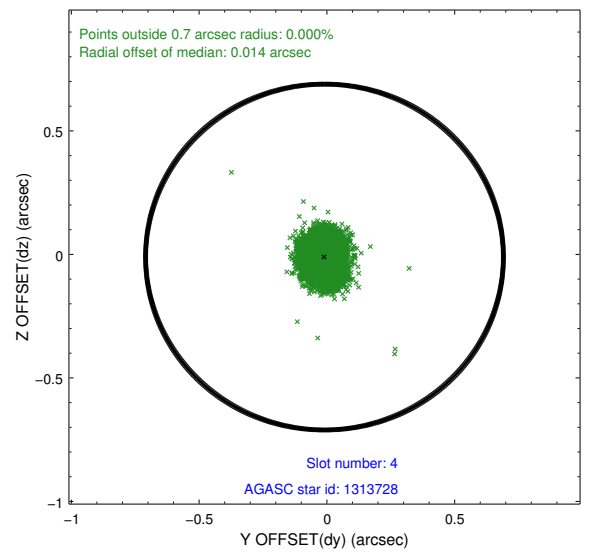
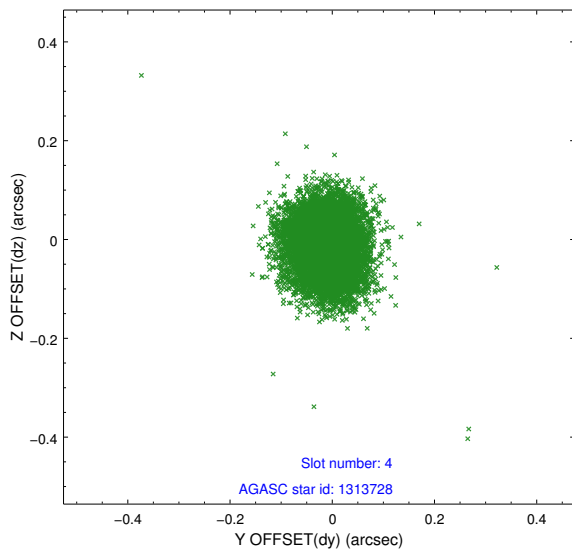
slot	status	id	mag	n_pts	med_dy	med_dz	dr1	dr2	ra	dec	mean_y	mean_z
0	FID	ACIS-S-1	7.19	4127	0.051	-0.060	0.035	0.056	0.000000	0.000000	929.61	-1732.30
1	FID	ACIS-S-4	7.19	4129	0.149	0.025	0.023	0.033	0.000000	0.000000	2147.25	171.70
2	FID	ACIS-S-5	7.22	4129	-0.224	0.049	0.017	0.043	0.000000	0.000000	-1819.22	165.59
3	GUIDE	1311536	9.84	8250	0.160	0.007	0.176	0.275	9.611725	0.209714	-2148.83	1463.93
4	GUIDE	1313728	8.51	8256	-0.009	-0.011	0.068	0.111	9.948618	1.012743	378.95	-389.51
5	GUIDE	1314512	9.55	8246	-0.108	-0.102	0.110	0.173	9.488193	0.437625	-1247.45	1704.77
6	GUIDE	1446568	9.38	8248	0.035	0.018	0.091	0.148	10.345096	0.709207	-1016.20	-1523.08
7	GUIDE	1449360	8.90	8254	-0.083	0.085	0.104	0.158	10.210501	1.173717	722.83	-1441.62

2.4 Star Slots

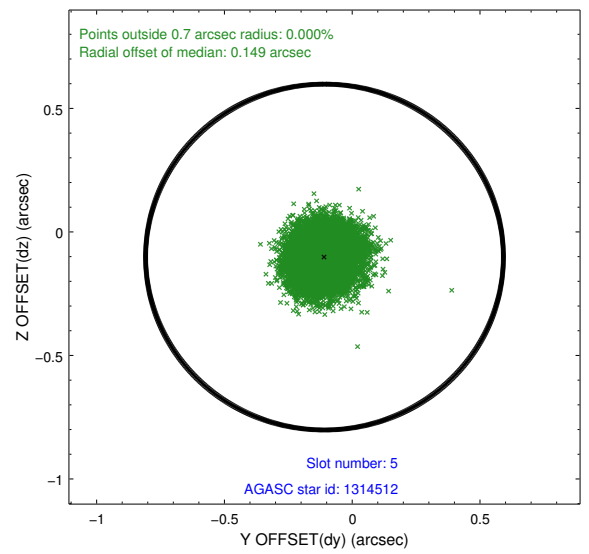
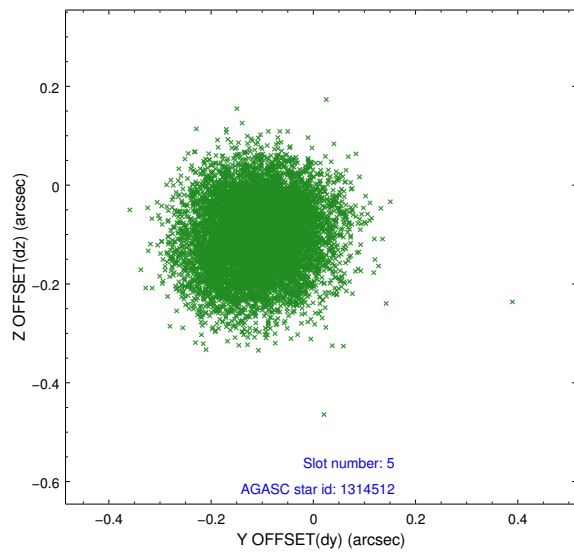
2.4.1 Slot 3



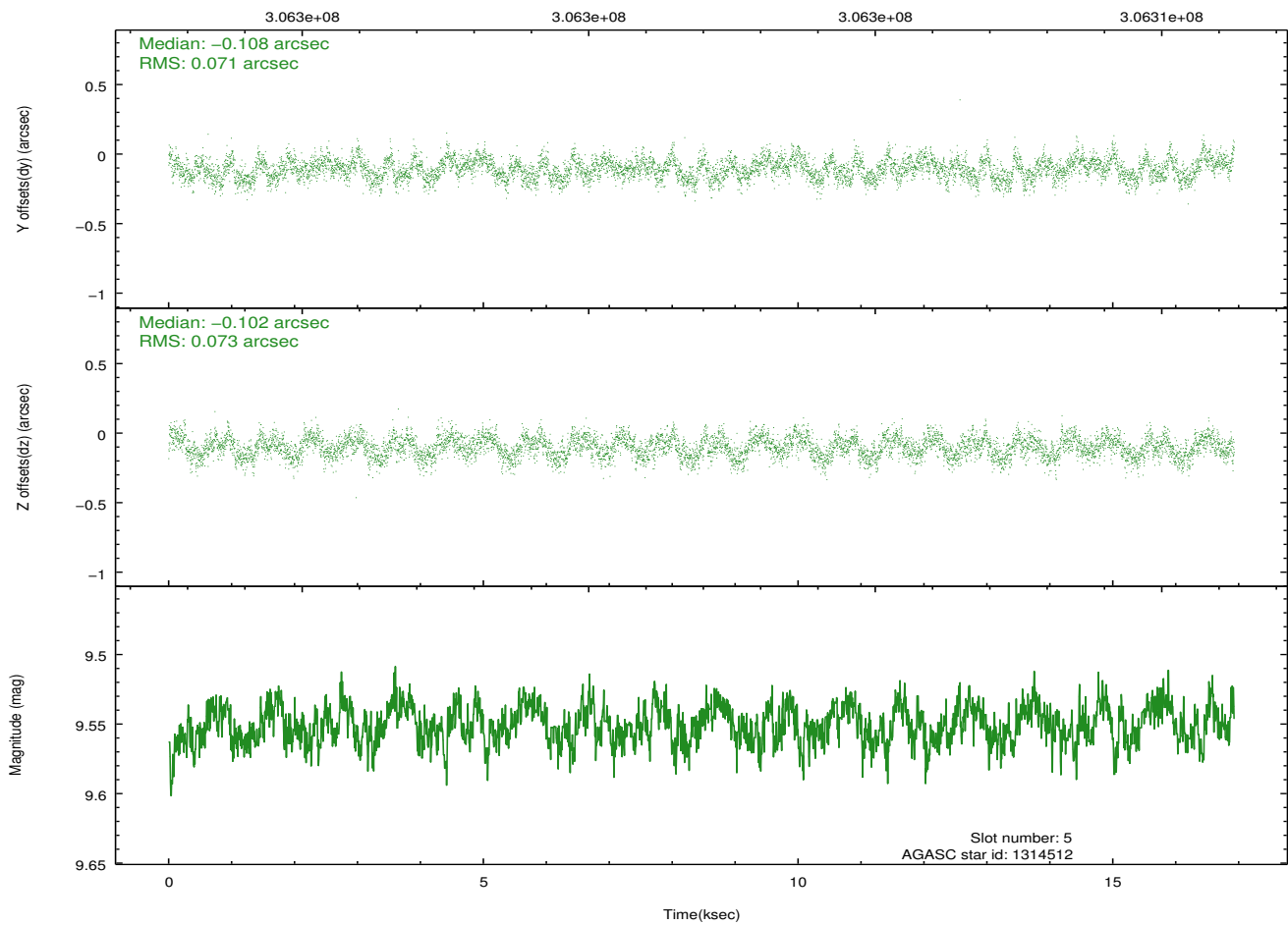
2.4.2 Slot 4



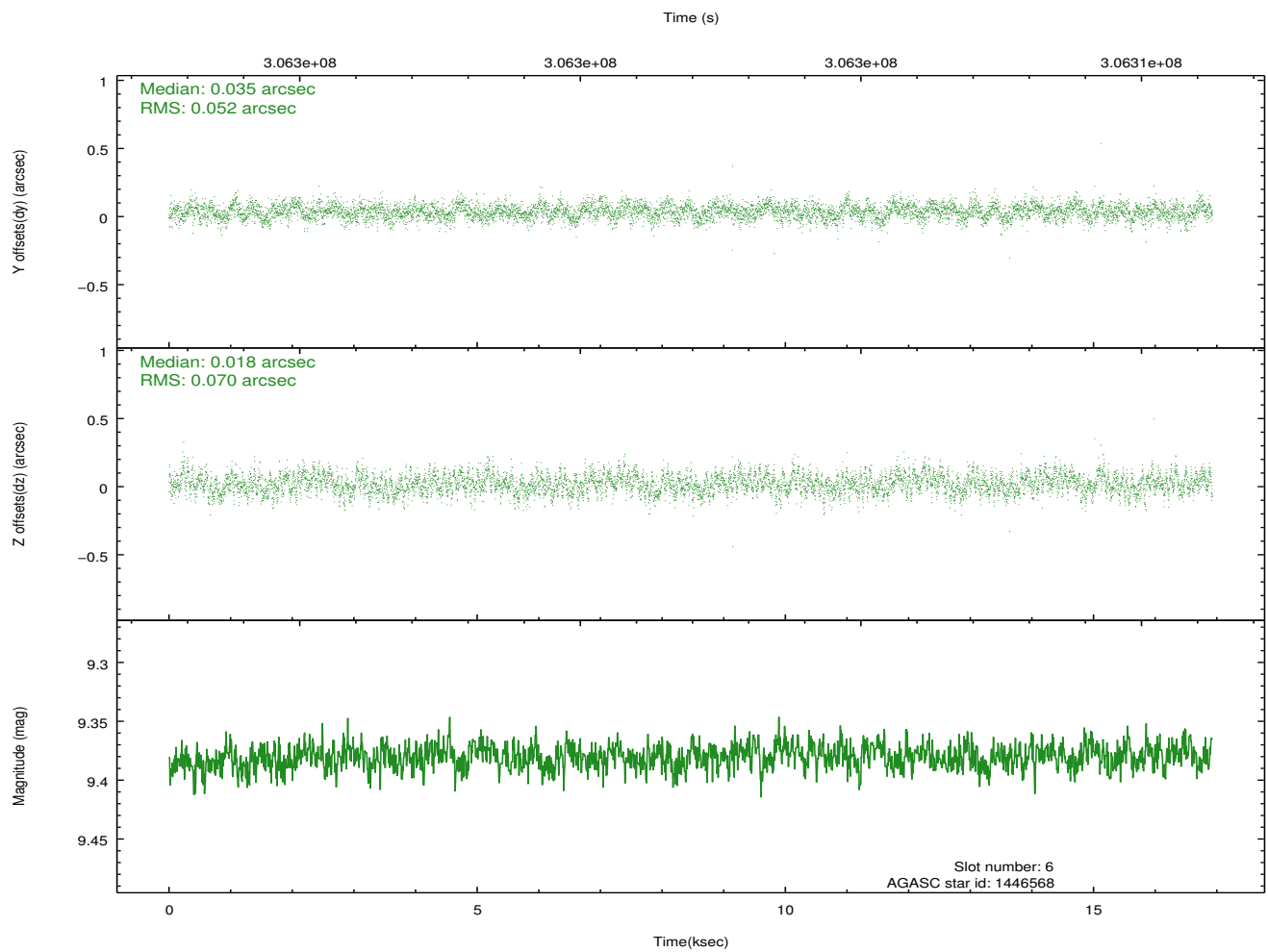
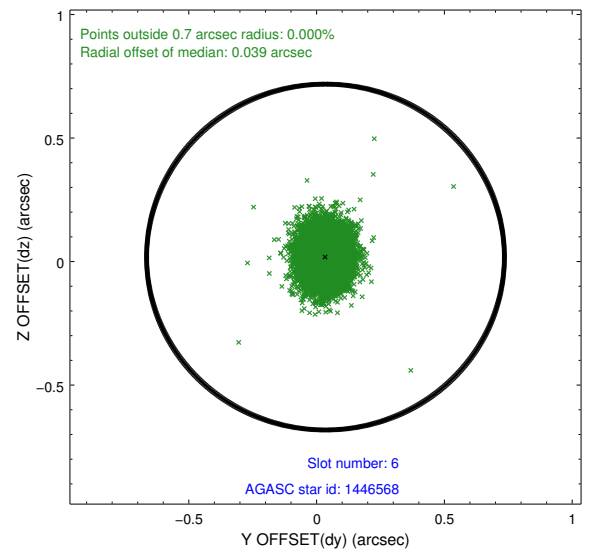
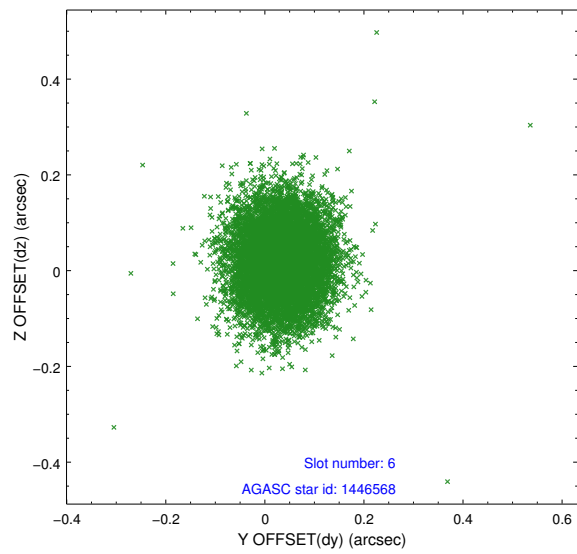
2.4.3 Slot 5



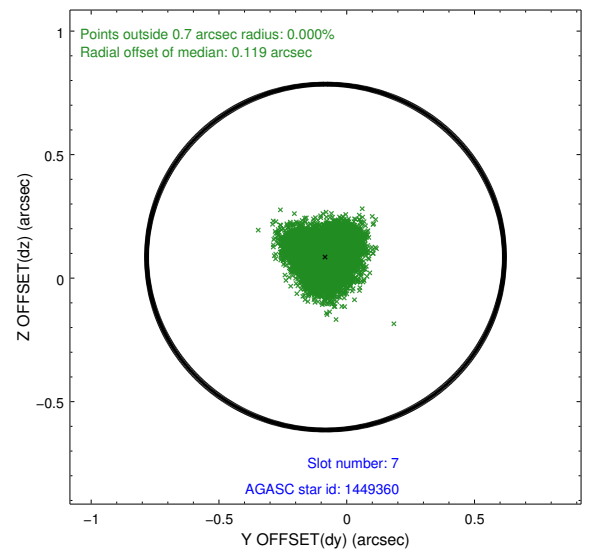
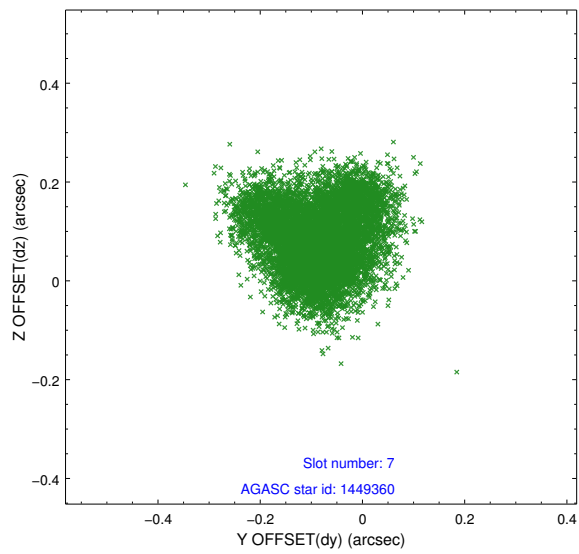
Time (s)



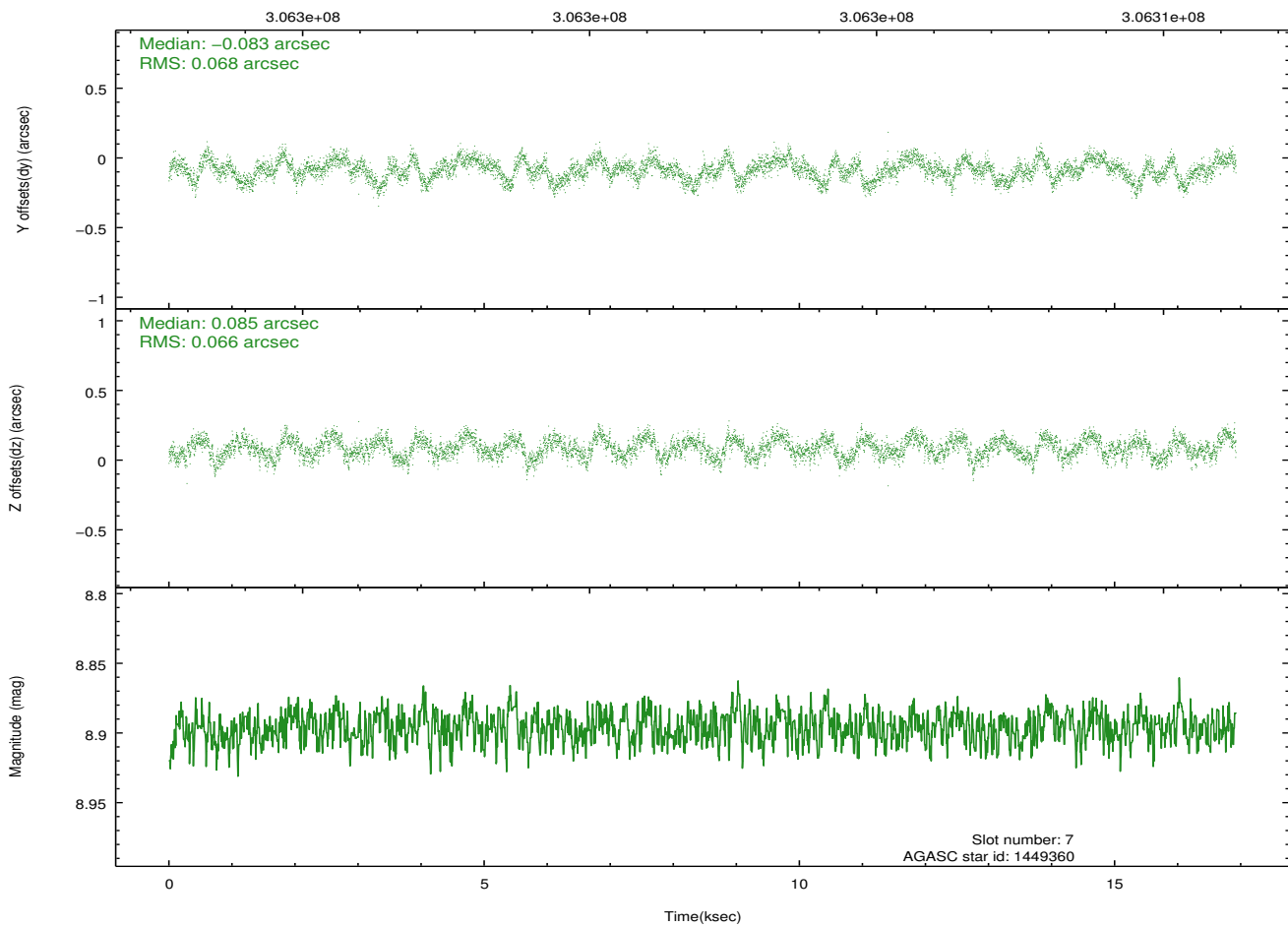
2.4.4 Slot 6



2.4.5 Slot 7

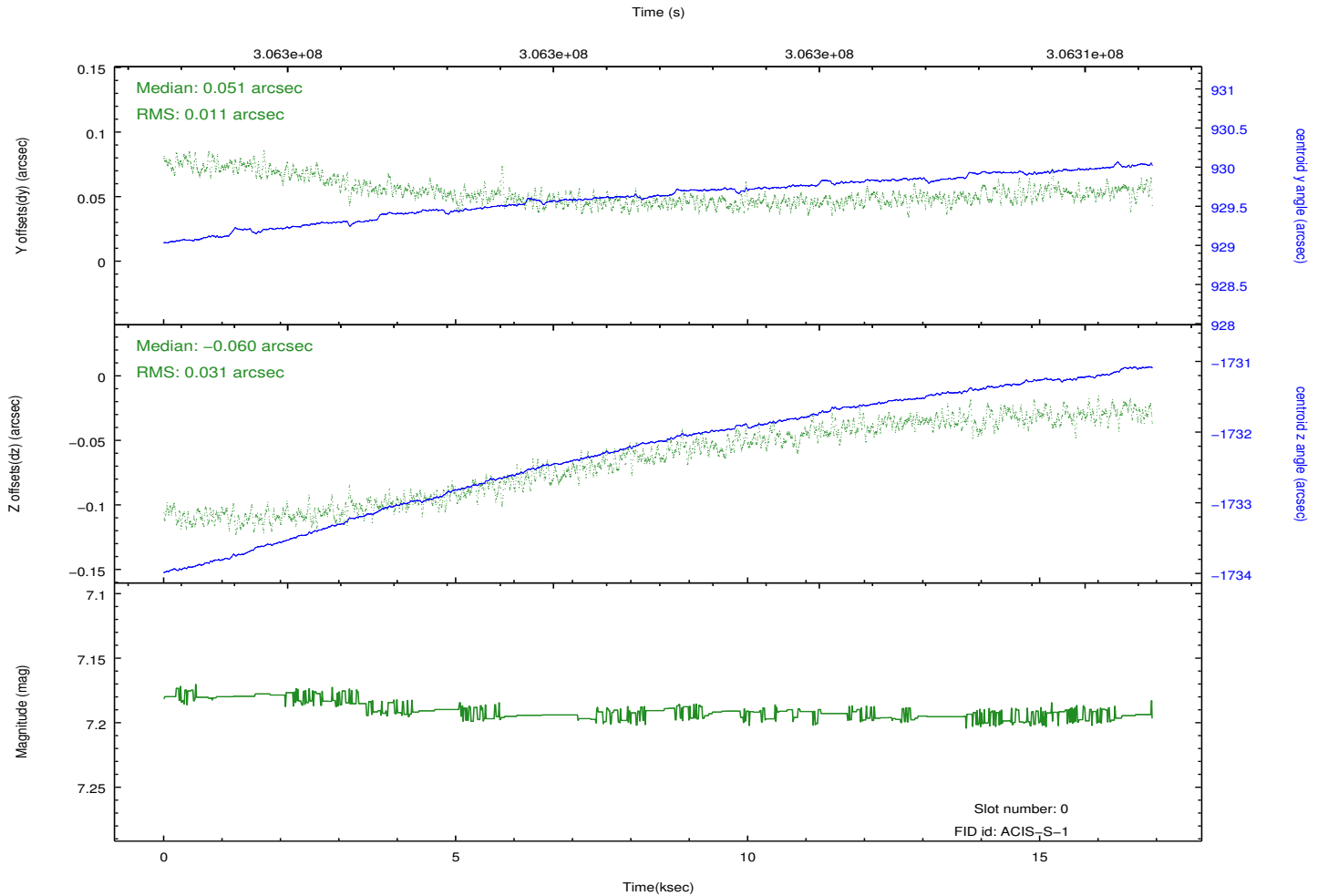
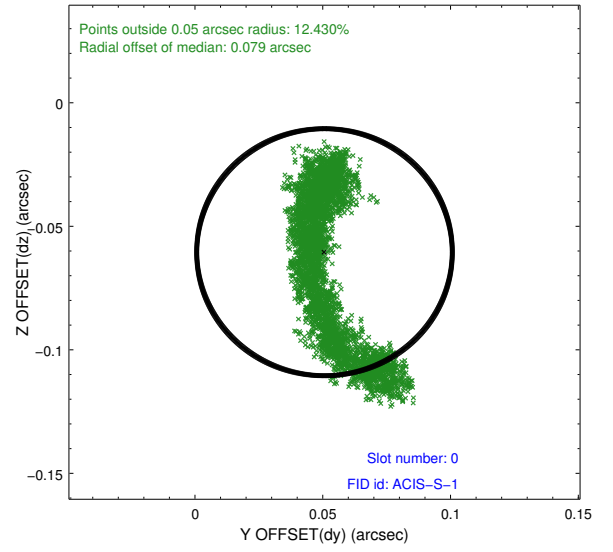
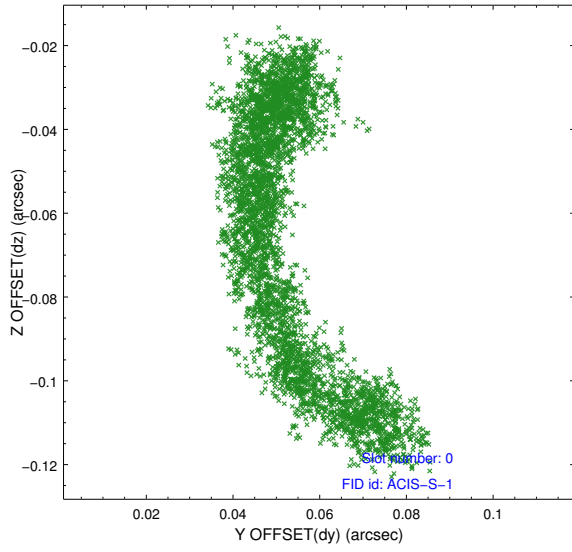


Time (s)

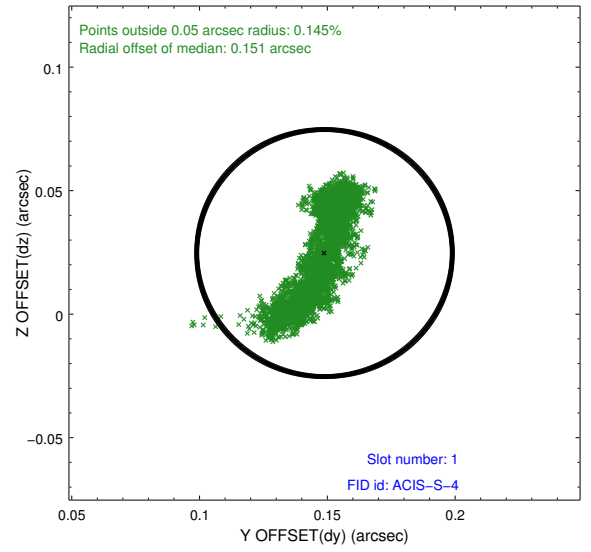
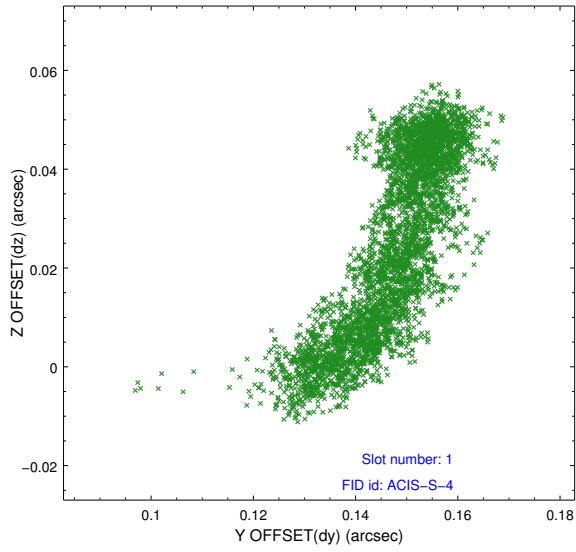


2.5 FID Slots

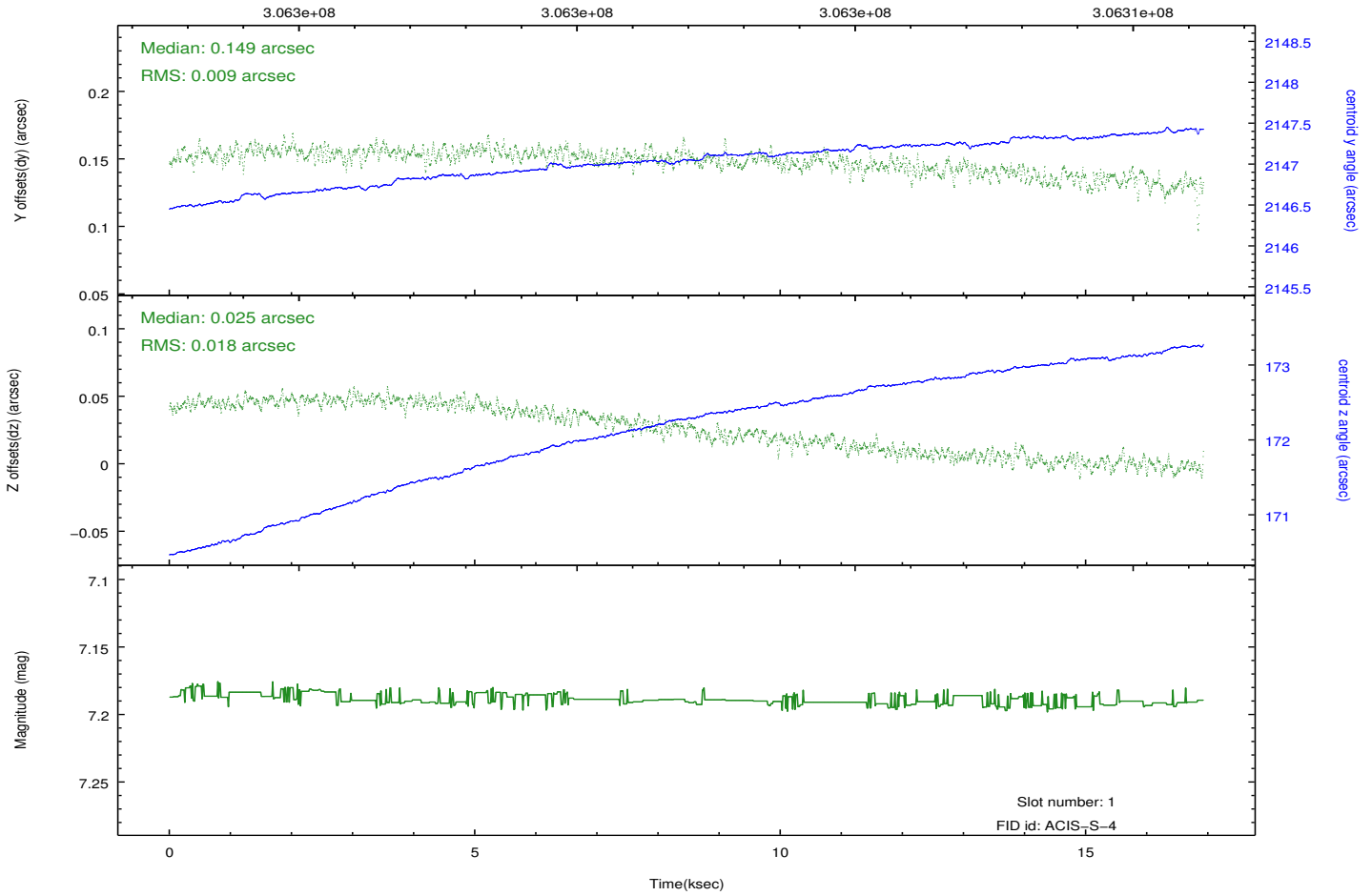
2.5.1 Slot 0



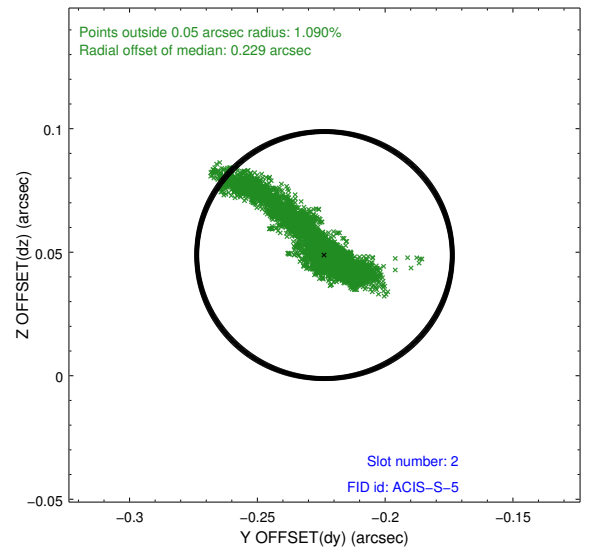
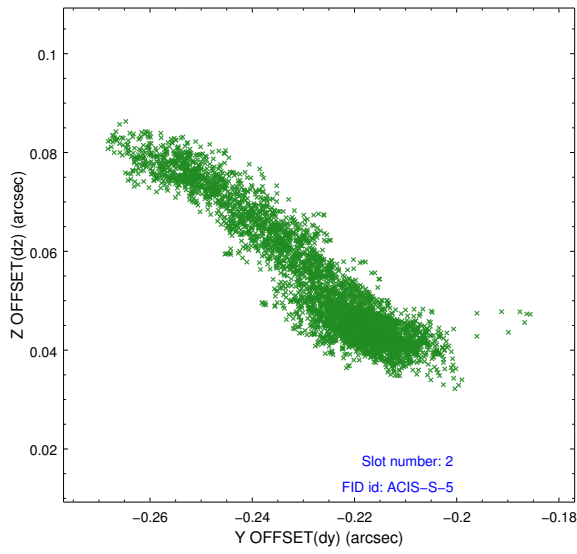
2.5.2 Slot 1



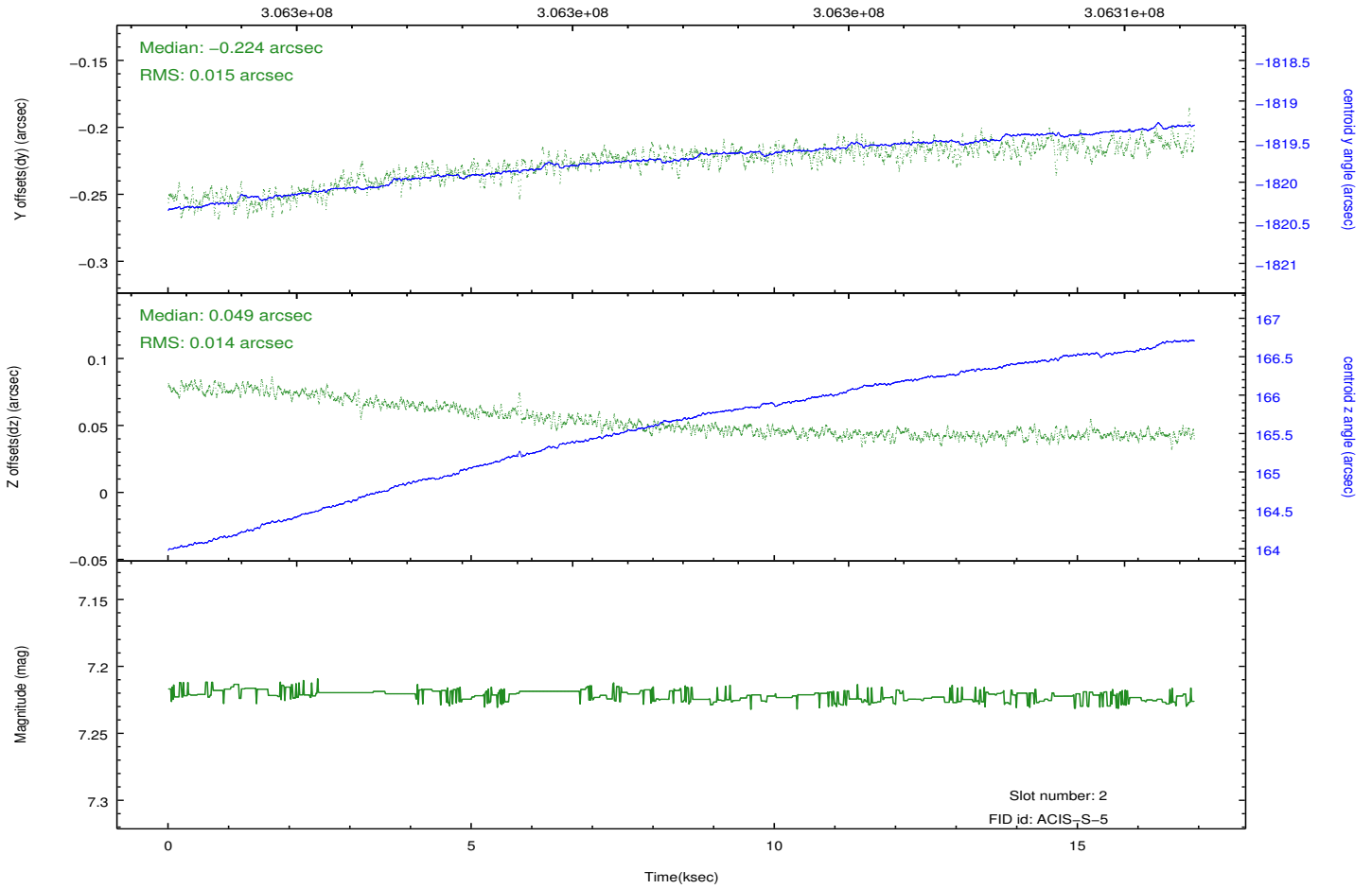
Time (s)



2.5.3 Slot 2



Time (s)



A Summary

A.1 Status

V&V Scientist	Beth Sundheim
V&V Date (YYYY-MM-DD)	2012.05.03
V&V Edition	1
V&V Disposition and Status	OK
V&V Charge Time	16.9229001

A.2 Comments