

V&V Reference Report

L2 ASCDS Version : 8.4.4

Observation 9758 - L2 Version 2
Chandra X-Ray Center

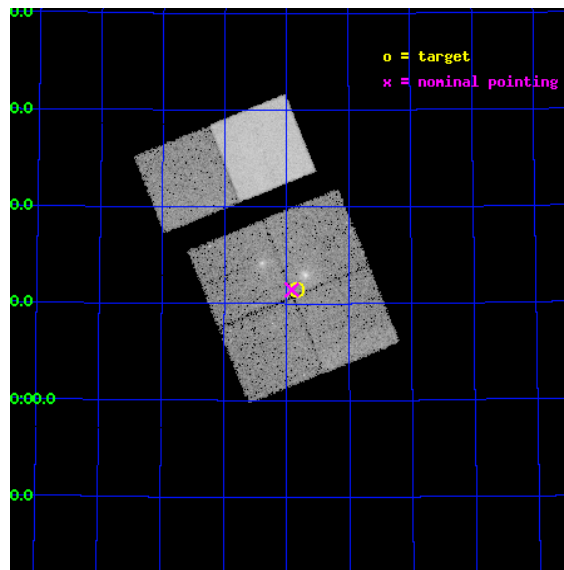
L2 Processing Date : May 4 2012

Contents

1	Front	2
2	OBI	3
2.1	OBI	3
2.1.1	Images	3
2.1.2	Bias	3
2.1.3	Parameters	4
2.1.4	Events	4
2.2	Compared Parameters	5
2.3	Aspect	6
2.4	Star Slots	9
2.4.1	Slot 3	9
2.4.2	Slot 4	10
2.4.3	Slot 5	11
2.4.4	Slot 6	12
2.4.5	Slot 7	13
2.5	FID Slots	14
2.5.1	Slot 0	14
2.5.2	Slot 1	15
2.5.3	Slot 2	16
A	Summary	17
A.1	Status	17
A.2	Comments	17

1 Front

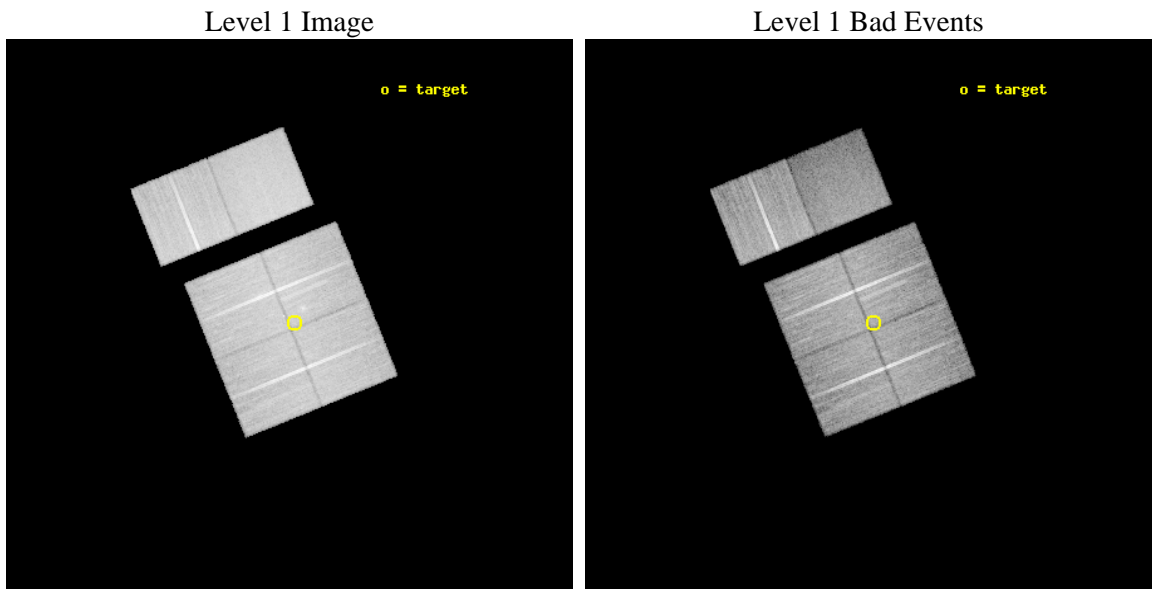
seq_num	900576	Sequence number
obs_id	9758	Observation id
title	AGN in the Cosmic Web: A Proto-Cluster at $z=2.3$	Proposal title
observer	Prof Kirpal Nandra	Principal investigator
object	HS 1700+643	Source name
dtcycle	0	
cycle	P	events from which exps? Prim/Second/Both
ra_targ	255.210833	Observer's specified target RA [deg]
dec_targ	64.191417	Observer's specified target Dec [deg]
ra_nom	255.22936235055	Nominal RA [deg]
dec_nom	64.190725768436	Nominal Dec [deg]
roll_nom	337.99199251803	Nominal Roll [deg]
revision	2	Processing version of data
ontime	23670.39991188	Sum of GTIs [s]
livetime	23370.671055593	Livetime [s]
ontime0	23670.39991188	Sum of GTIs [s]
ontime1	23667.158951521	Sum of GTIs [s]
ontime2	23670.39991188	Sum of GTIs [s]
ontime3	23670.39991188	Sum of GTIs [s]
ontime6	23670.39991188	Sum of GTIs [s]
ontime7	23670.39991188	Sum of GTIs [s]
l2events	175759	Number of level 2 events



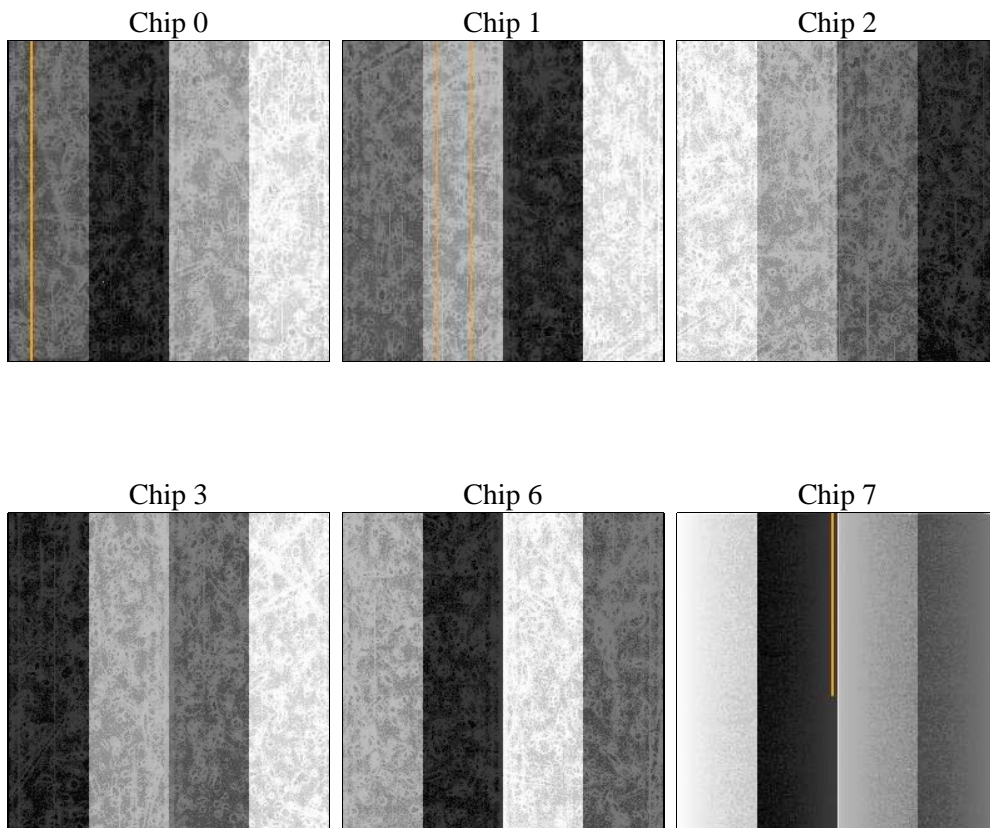
2 OBI

2.1 OBI

2.1.1 Images



2.1.2 Bias



2.1.3 Parameters

obi_num	0	Obi number	sched_exp_time	23528.090000	[s] Scheduled observation exposure time
ascdsver	8.4.4	Processing system revision	ontime	23670.39991188	Sum of GTIs [s]
caldbver	4.4.9	 	ontime0	23670.39991188	Sum of GTIs [s]
date	2012-05-04T14:38:24	Date and time of file creation	ontime1	23667.158951521	Sum of GTIs [s]
revision	2	Processing version of data	ontime2	23670.39991188	Sum of GTIs [s]
			ontime3	23670.39991188	Sum of GTIs [s]
			ontime6	23670.39991188	Sum of GTIs [s]
			ontime7	23670.39991188	Sum of GTIs [s]
			l1events	1148076	Number of level 1 events

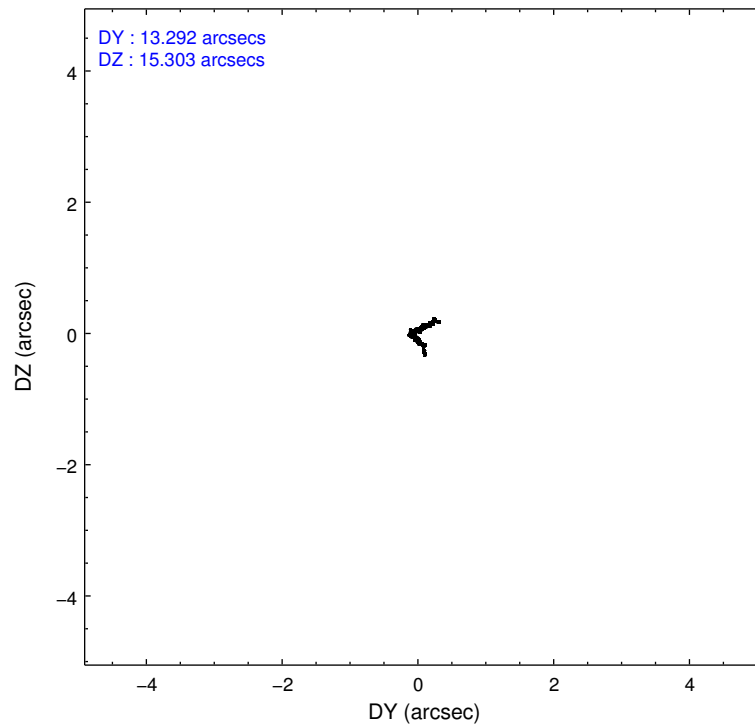
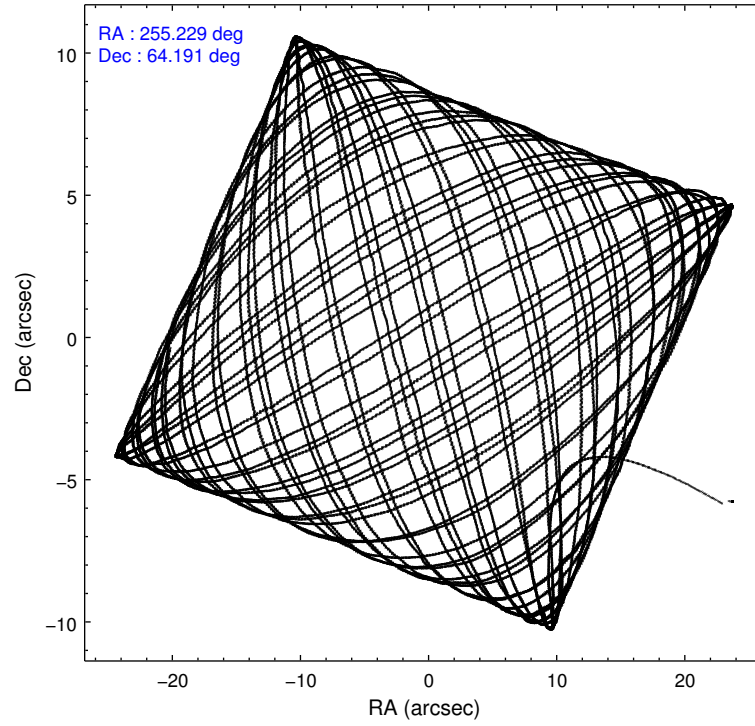
2.1.4 Events

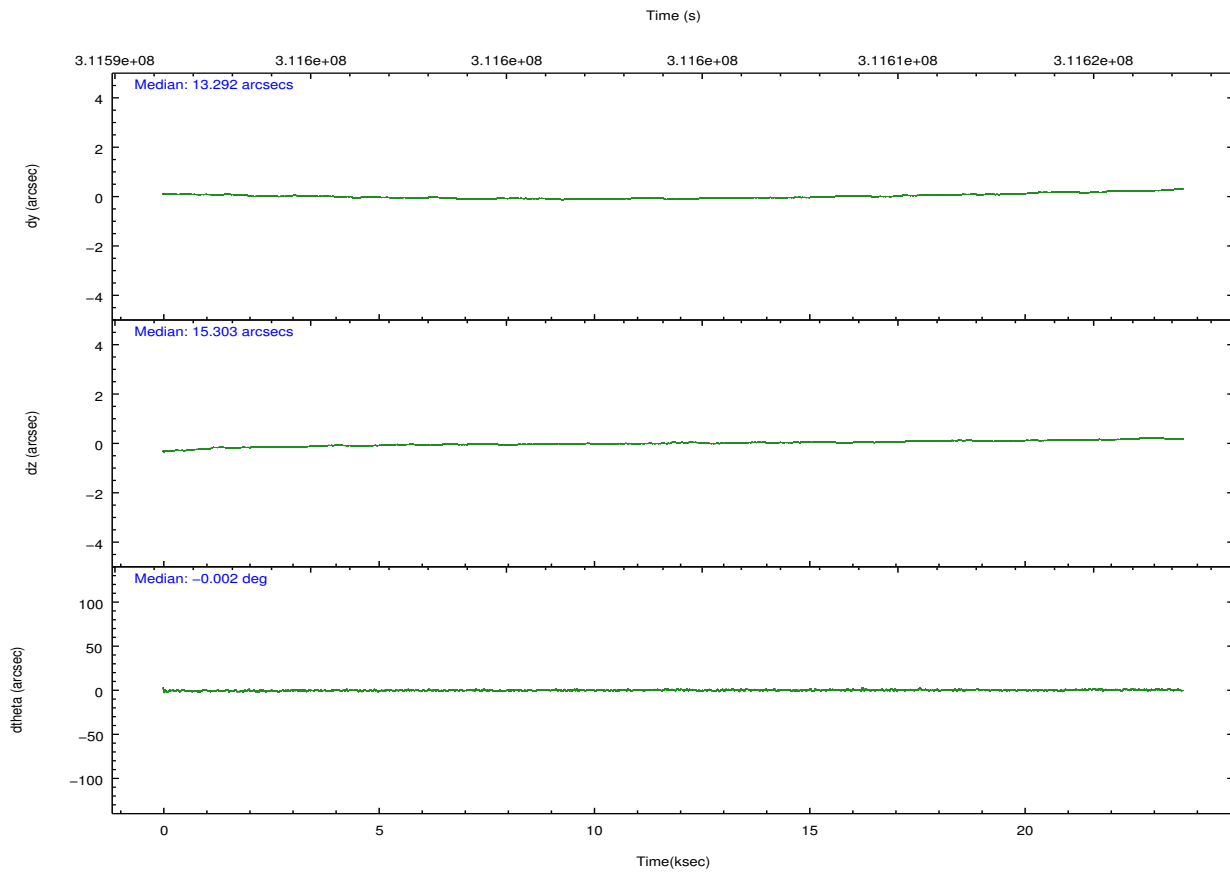
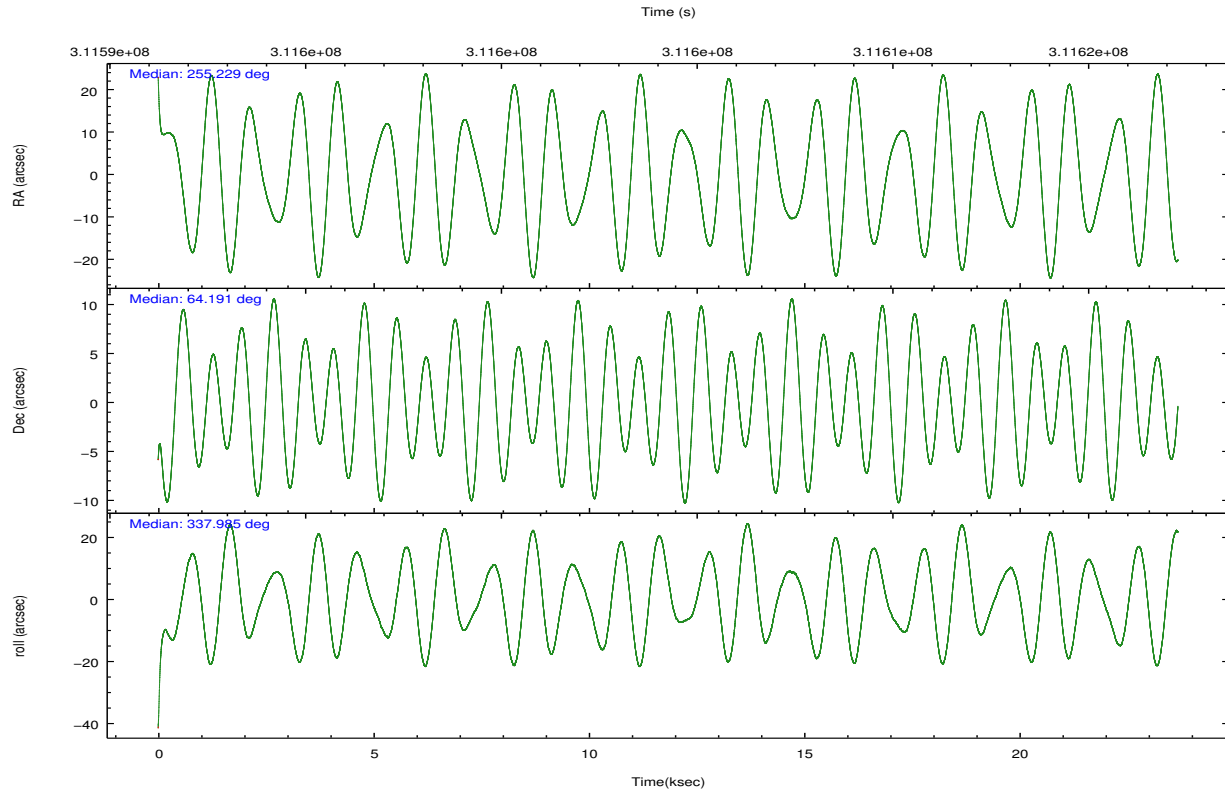
	ccd 0	ccd 1	ccd 2	ccd 3	ccd 6	ccd 7		ccd 0	ccd 1	ccd 2	ccd 3	ccd 6	ccd 7
level 1 events	175514	175392	200822	187068	197440	211840	grade 0 events	6389	7572	8215	7990	6879	8982
rejected events	157202	154546	180401	167379	177746	115745		3%	4%	4%	4%	3%	4%
rejected %	89%	88%	89%	89%	90%	54%	grade 1 events	92	88	116	124	106	241
								0%	0%	0%	0%	0%	0%
							grade 2 events	4366	4596	4741	4073	4250	19715
								2%	2%	2%	2%	2%	9%
							grade 3 events	2118	2284	1977	2033	2146	8931
								1%	1%	0%	1%	1%	4%
							grade 4 events	1944	2278	2095	2012	2142	8726
								1%	1%	1%	1%	1%	4%
							grade 5 events	6360	7131	6170	7514	7848	22335
								3%	4%	3%	4%	3%	10%
							grade 6 events	3593	4227	3490	3688	4375	50236
								2%	2%	1%	1%	2%	23%
							grade 7 events	150652	147216	174018	159634	169694	92674
								85%	83%	86%	85%	85%	43%

2.2 Compared Parameters

Parameter	Planned	Actual	Parameter	Planned	Actual
Instrument	ACIS	ACIS	Obspar format version number	7	7
Detector	ACIS-012367	ACIS-012367	Obspar file type	PREDICTED	ACTUAL
Grating	NONE	NONE	Obspar update status	NONE	UPDATED
Data mode	VFAINT	VFAINT	CCD I0 on	Y	Y
Observation mode	POINTING	POINTING	CCD I1 on	Y	Y
[deg] Pointing RA	255.166840	255.229362350555	CCD I2 on	Y	Y
[deg] Pointing Dec	64.186820	64.19072576843641	CCD I3 on	Y	Y
[deg] Pointing Roll	337.839603	337.9919925180265	CCD S0 on	N	N
[mm] SIM focus pos	-0.782348	-0.7809083437167272	CCD S1 on	N	N
[mm] SIM defocus	0	0.001439871863259334	CCD S2 on	Y	Y
[mm] SIM translation stage pos	-233.592463	-233.5874344608287	CCD S3 on	O1	Y
[mm] SIM translation stage offset	0	-0.005018542100998502	CCD S4 on	N	N
[s] Observation start time (MET)	311592552.184000	311591436.09984	CCD S5 on	N	N
Observation start date	2007-11-16T09:28:07	2007-11-16T09:10:36	Number of optional ACIS chips dropped	0	0
[s] Observation end time (MET)	311616080.184000	311616314.38854	On-chip summing requested	N	N
Observation end date	2007-11-16T16:00:15	2007-11-16T16:05:14	Subarray requested	NONE	NONE
Read mode	TIMED	TIMED	Alternating exposures requested	N	N
			[s] Primary exposure time	0.000000	3.2

2.3 Aspect



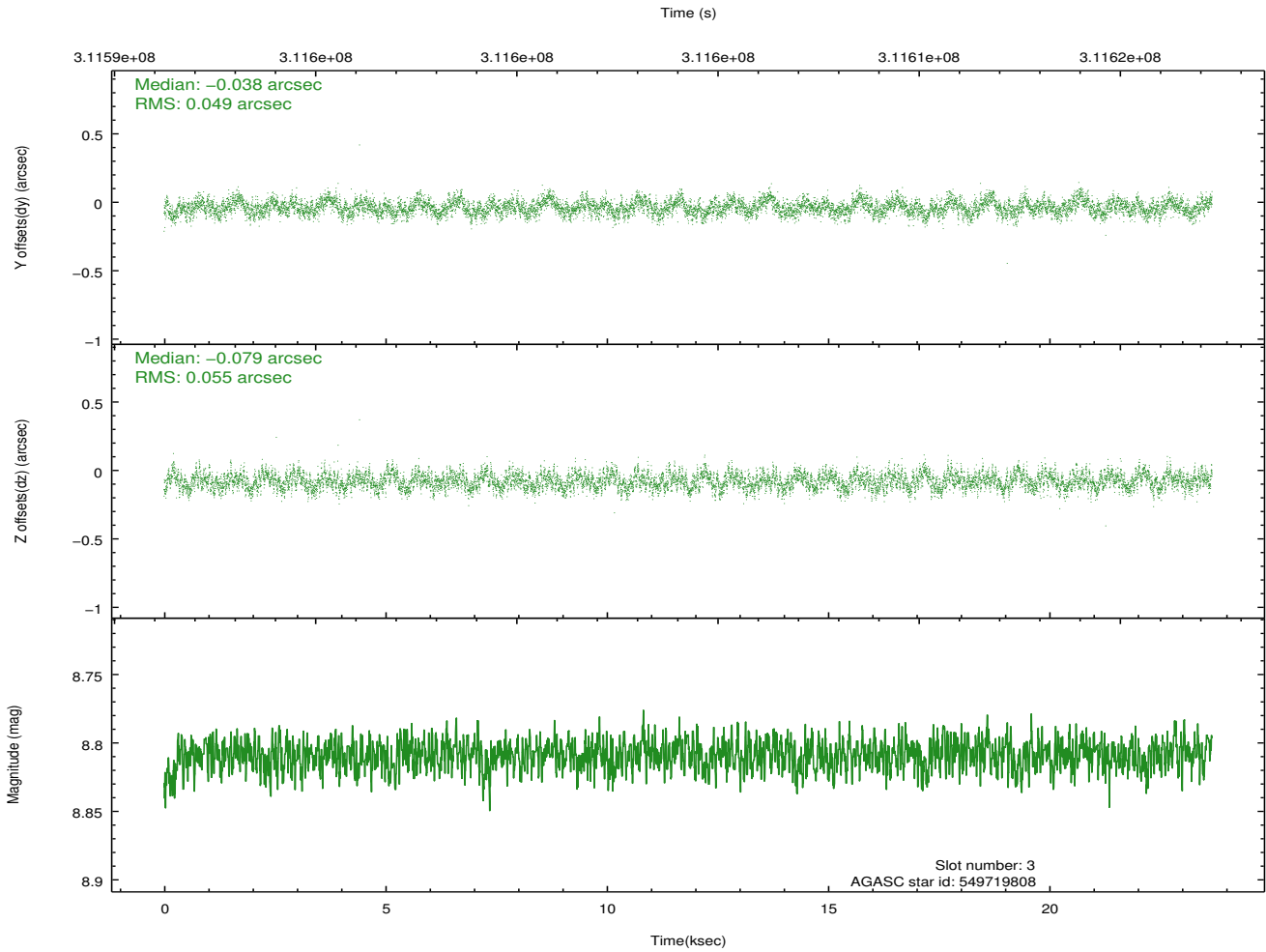
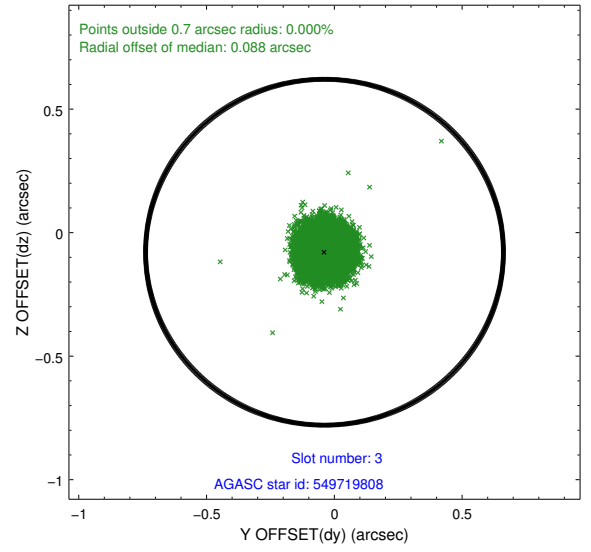
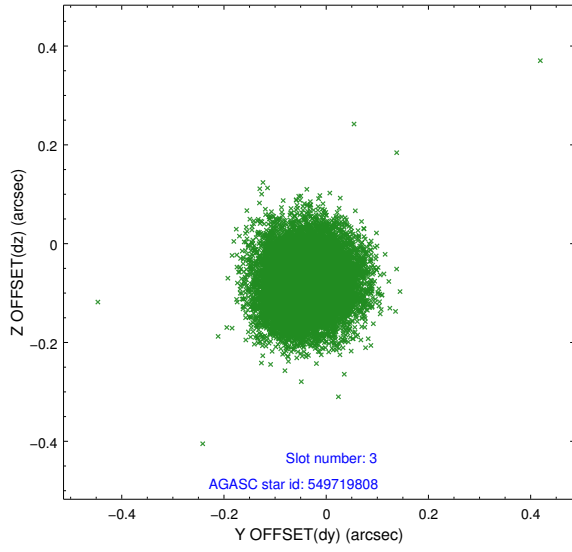


Slot Statistics

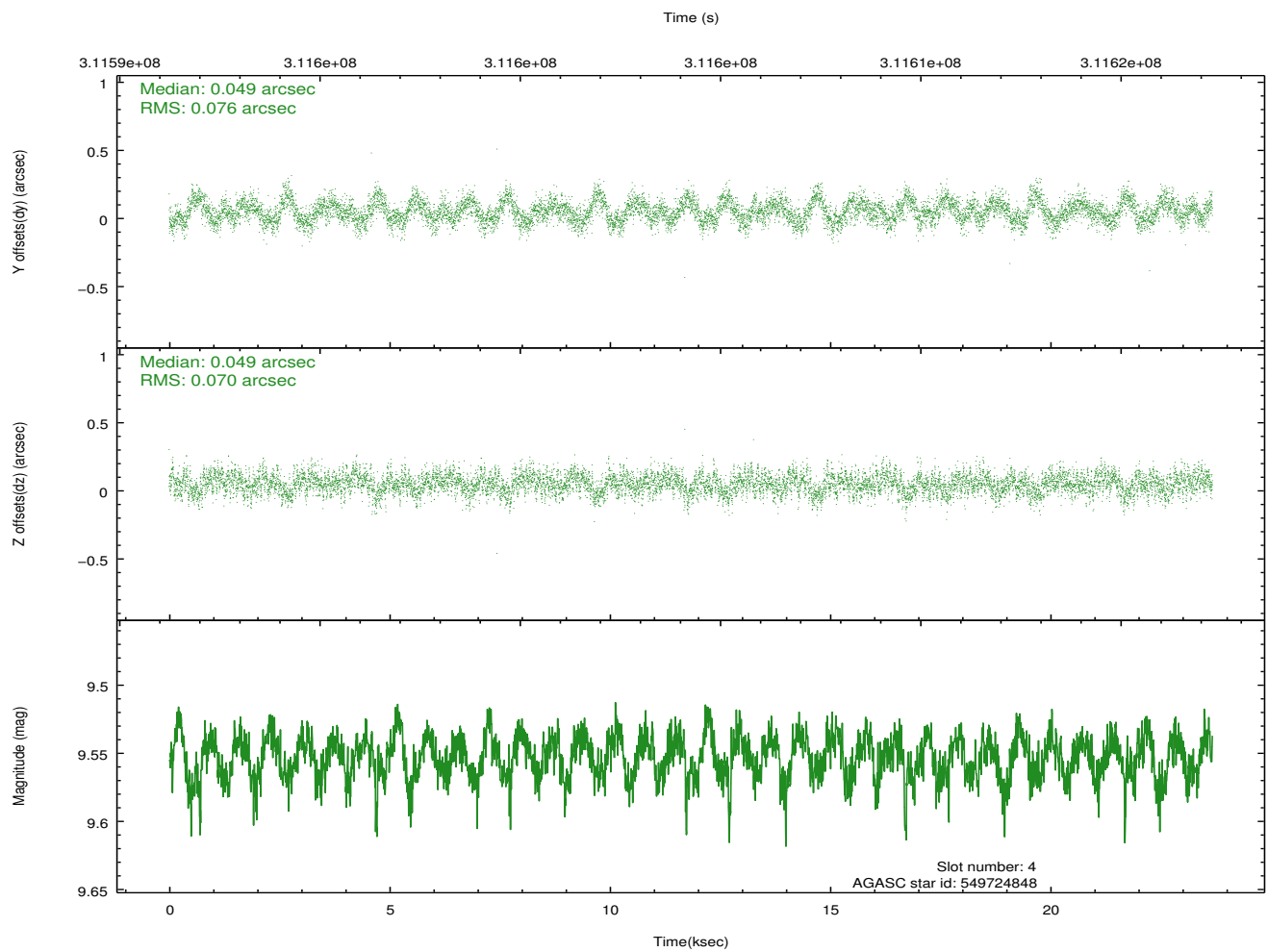
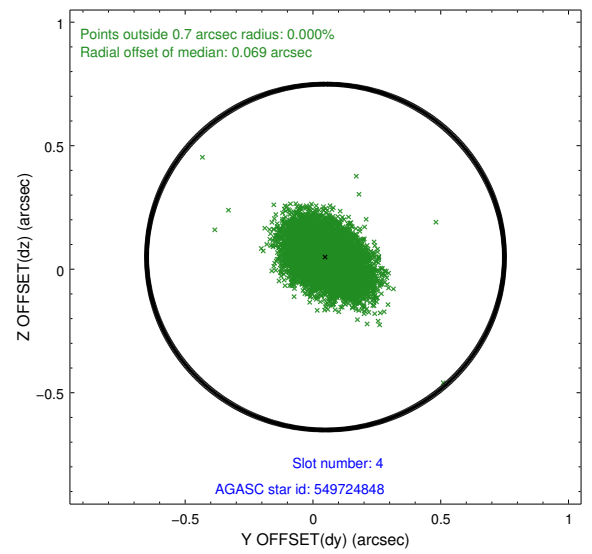
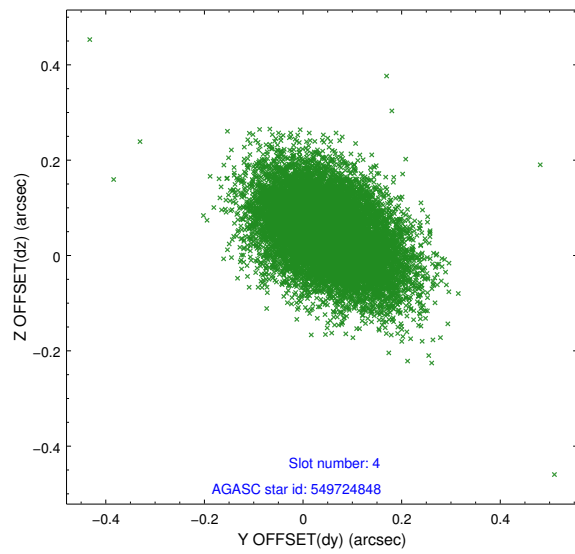
slot	status	id	mag	n_pts	med_dy	med_dz	dr1	dr2	ra	dec	mean_y	mean_z
0	FID	ACIS-I-1	7.23	5776	-0.017	-0.021	0.012	0.021	0.000000	0.000000	926.18	-838.93
1	FID	ACIS-I-4	7.15	5775	0.167	0.047	0.010	0.016	0.000000	0.000000	2146.48	1060.87
2	FID	ACIS-I-5	7.22	5775	-0.249	0.046	0.009	0.015	0.000000	0.000000	-1821.88	1058.88
3	GUIDE	549719808	8.81	11545	-0.038	-0.079	0.079	0.124	255.292775	64.694097	-509.31	1764.80
4	GUIDE	549724848	9.55	11532	0.049	0.049	0.108	0.179	255.389284	63.950133	647.36	-655.27
5	GUIDE	549726784	8.97	11540	0.013	0.024	0.095	0.150	255.680869	64.026795	967.12	-224.36
6	GUIDE	549726944	8.19	11547	-0.036	-0.201	0.085	0.141	254.598381	64.304516	-983.32	61.48
7	GUIDE	549728568	9.33	11538	0.012	0.217	0.098	0.157	253.813006	64.122814	-1891.05	-994.44

2.4 Star Slots

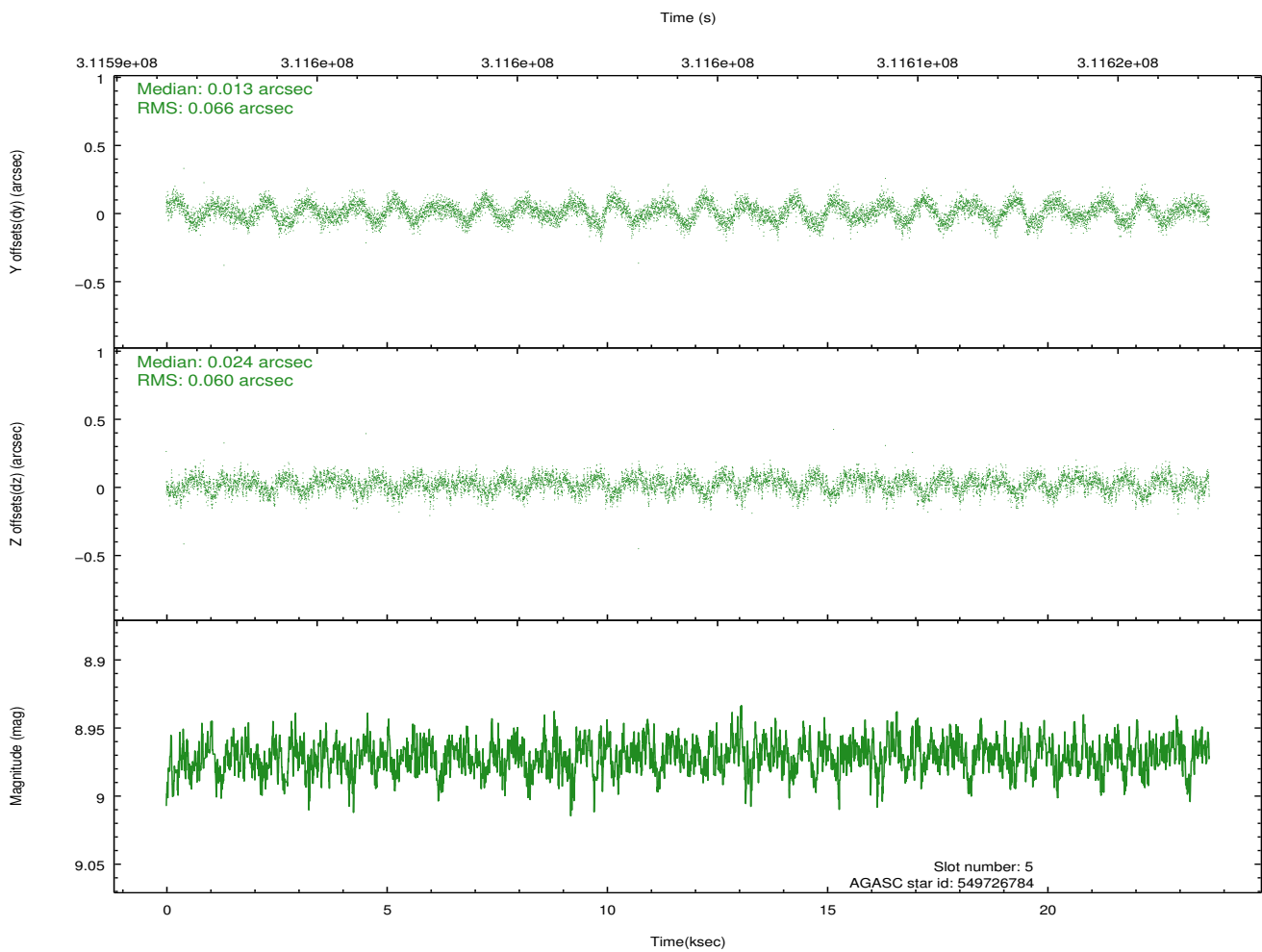
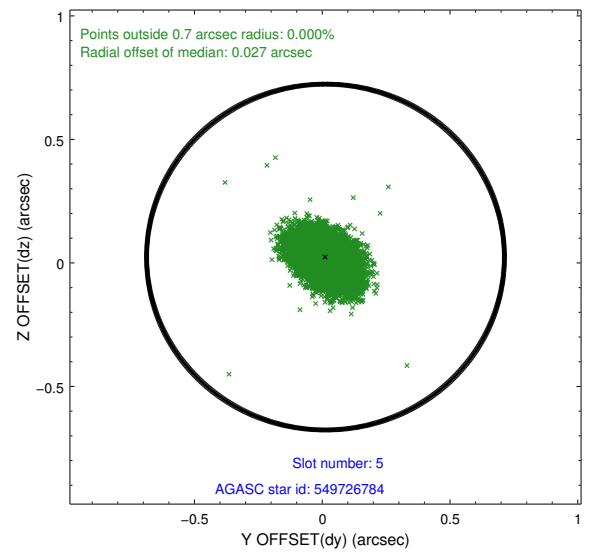
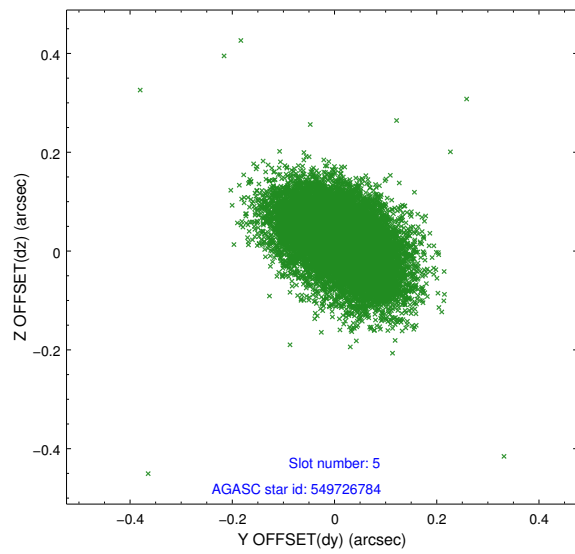
2.4.1 Slot 3



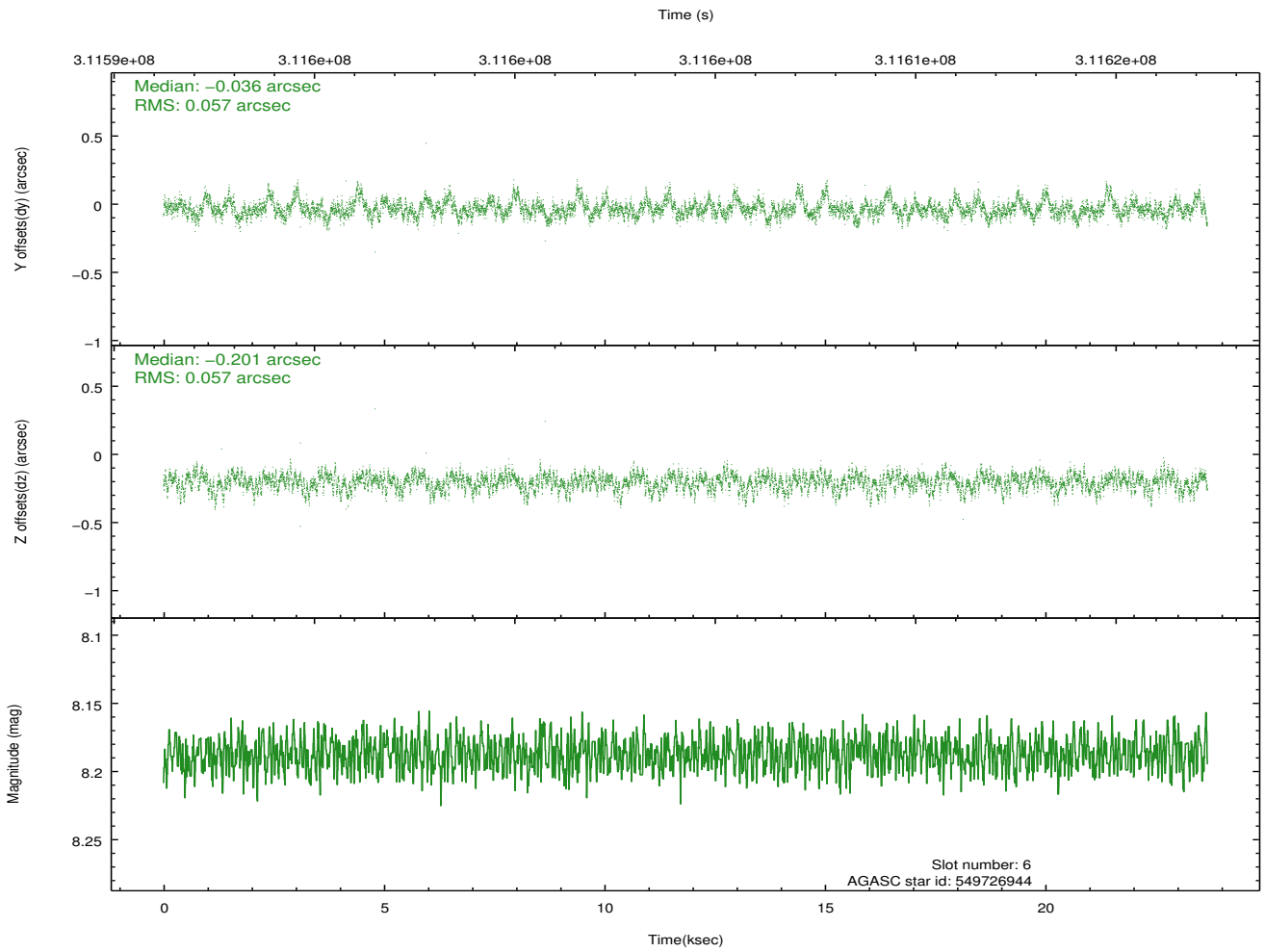
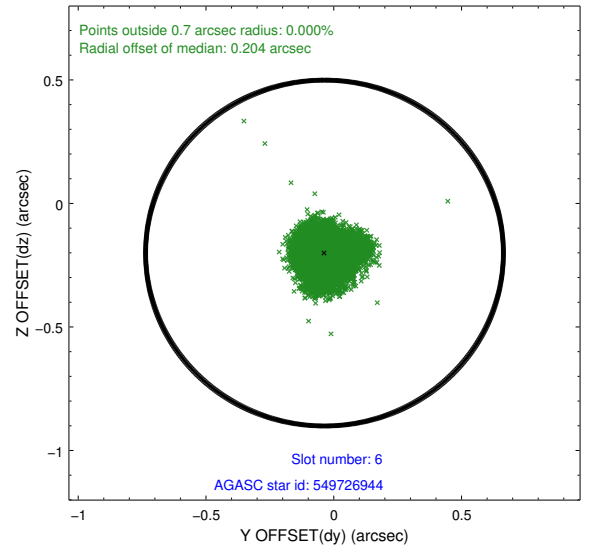
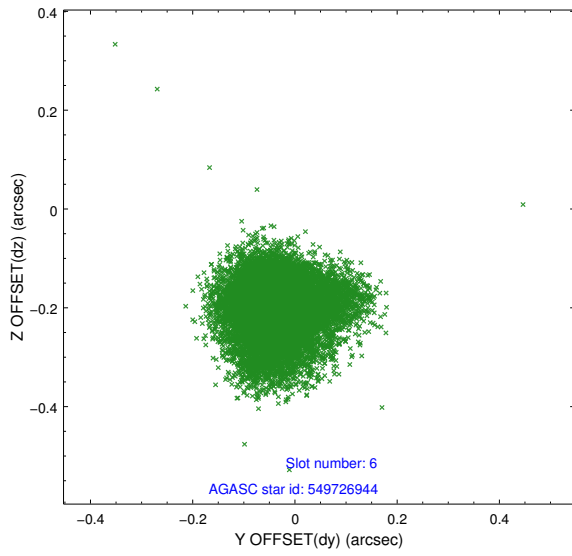
2.4.2 Slot 4



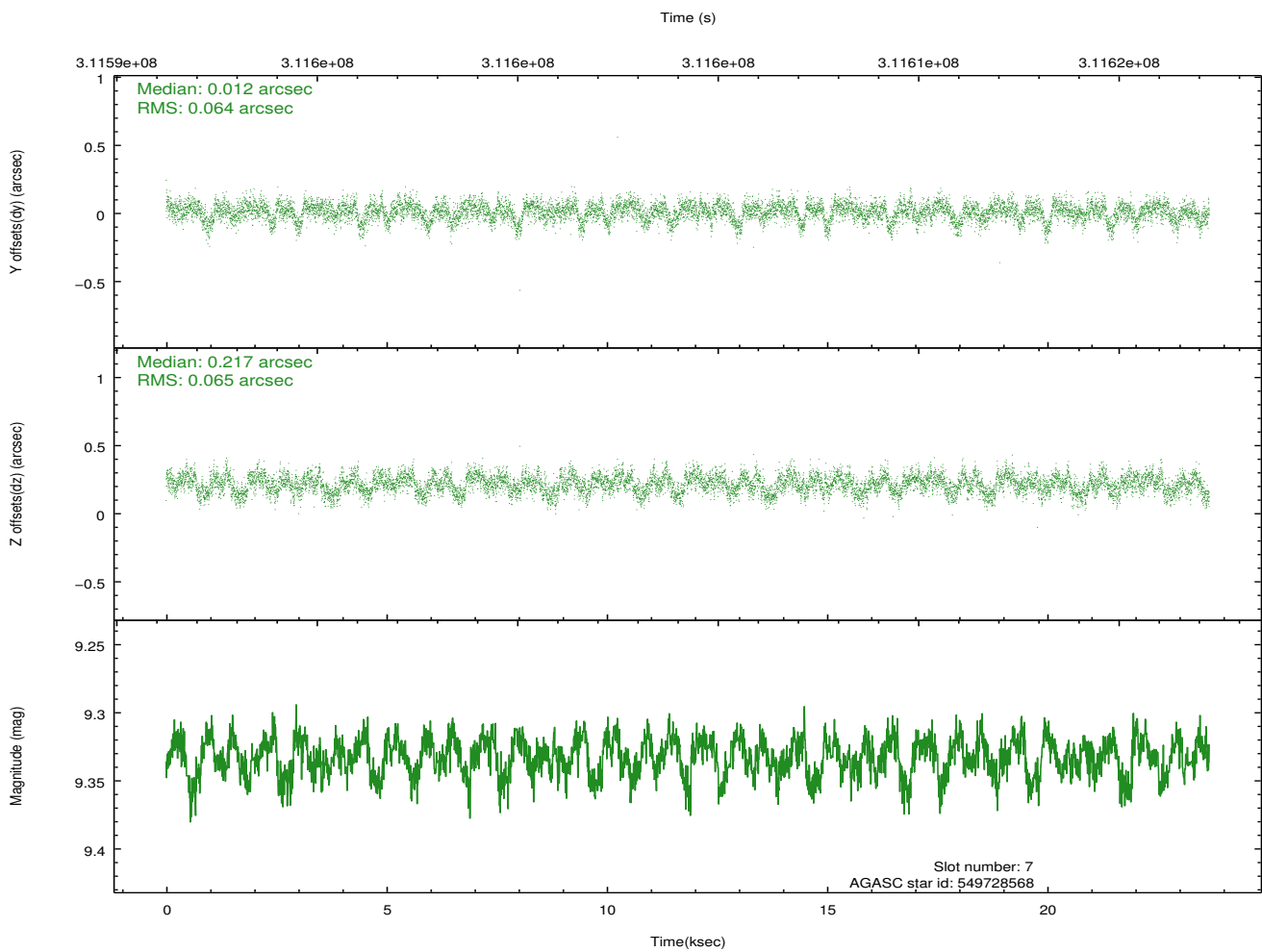
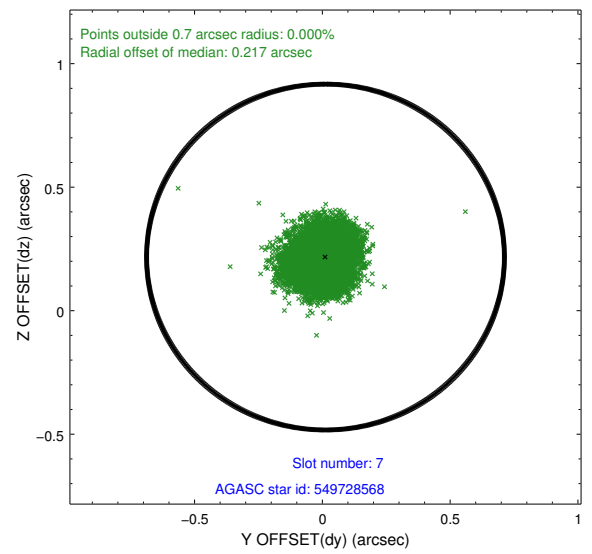
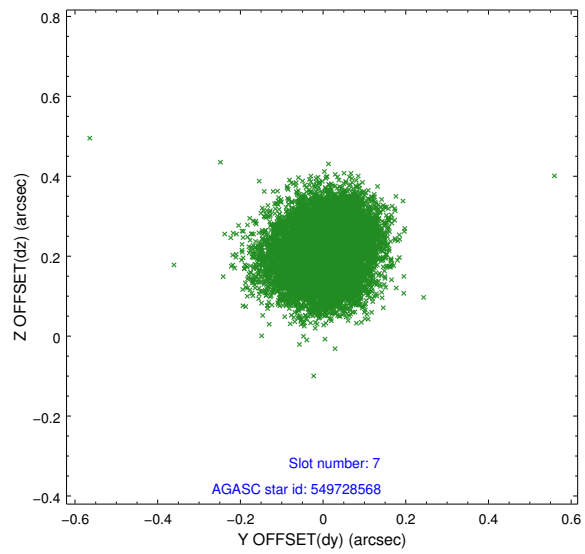
2.4.3 Slot 5



2.4.4 Slot 6

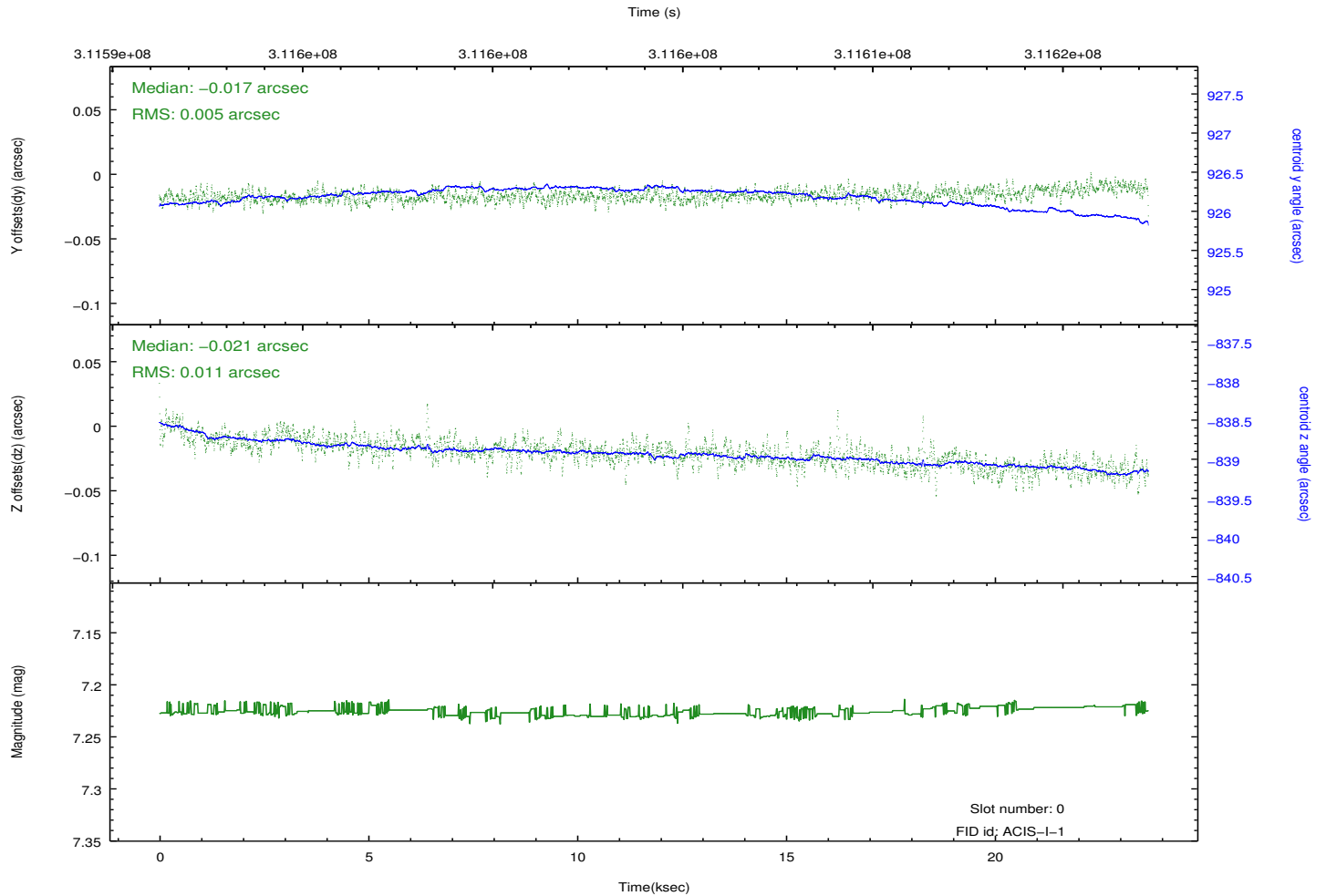
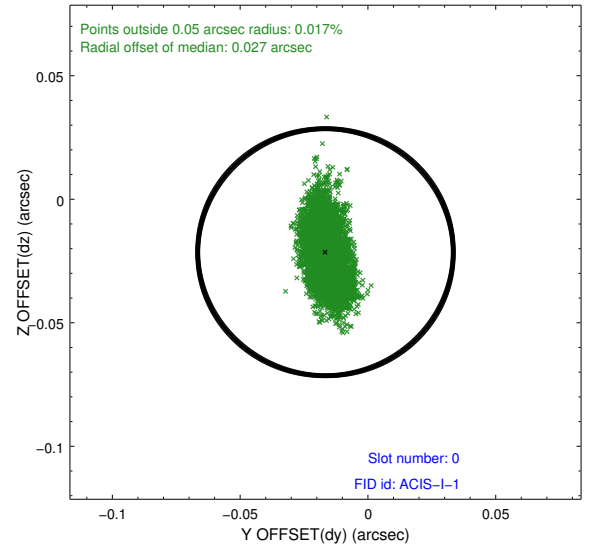
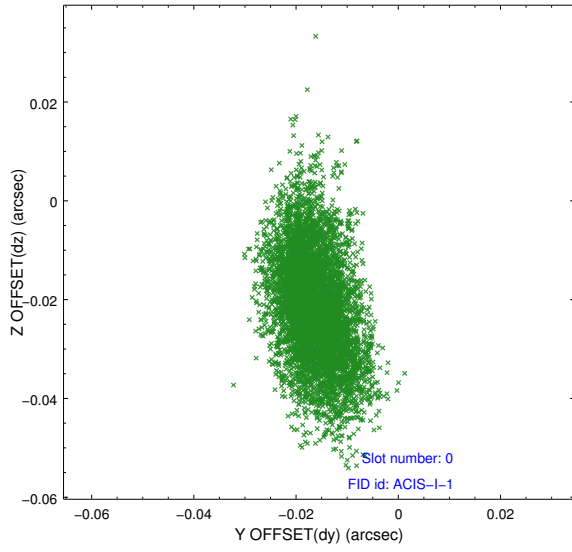


2.4.5 Slot 7

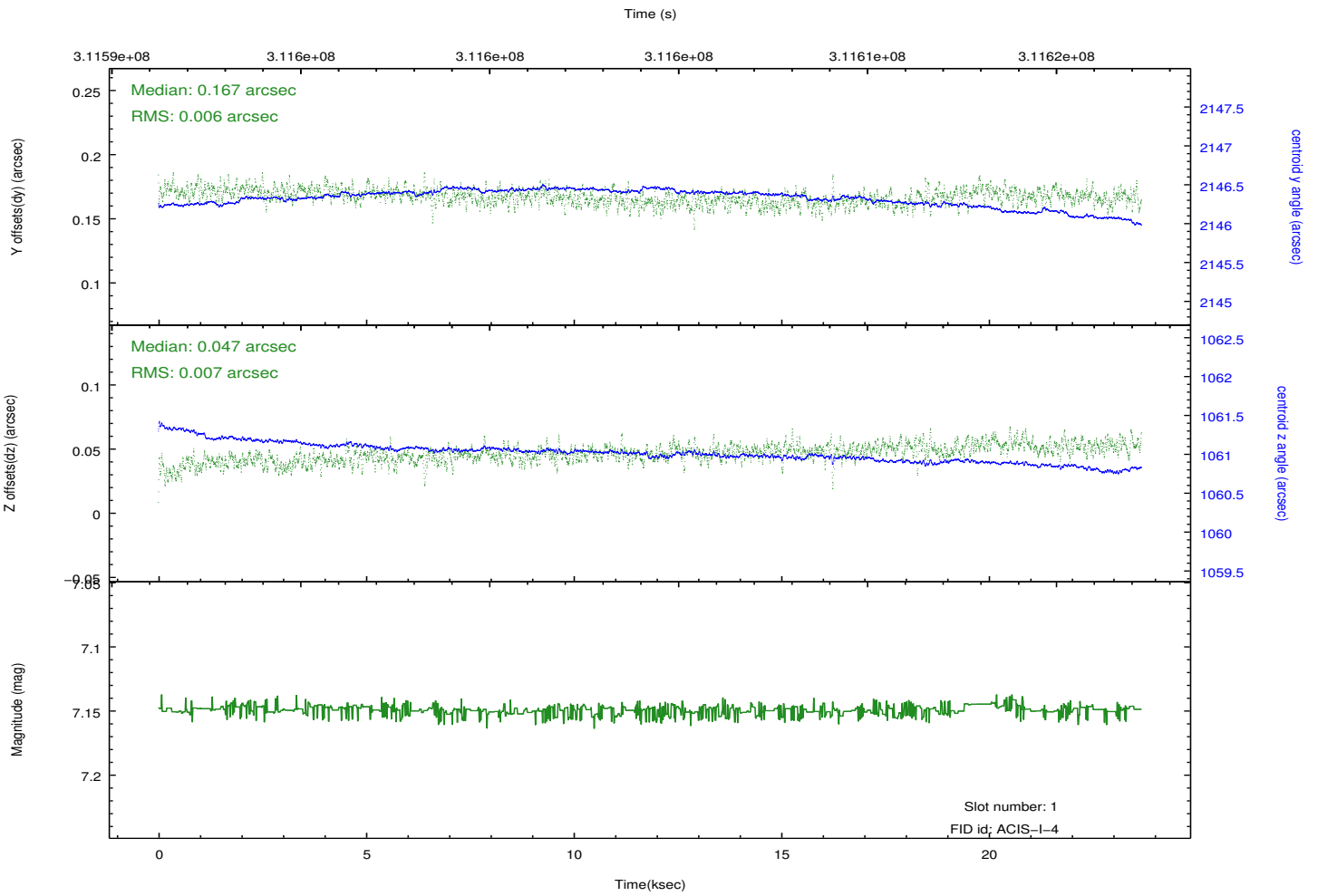
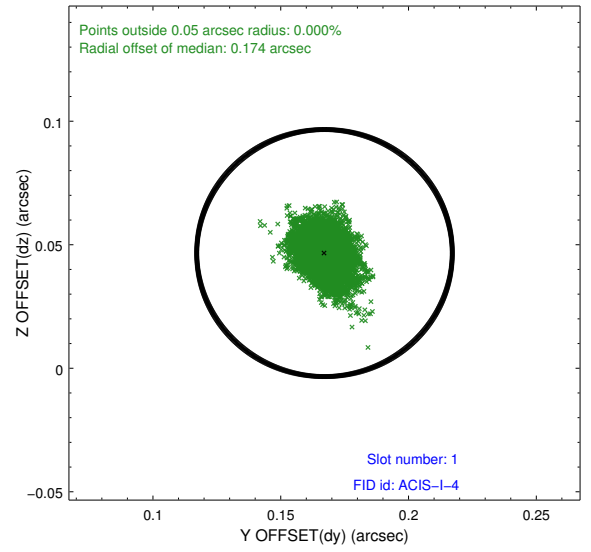
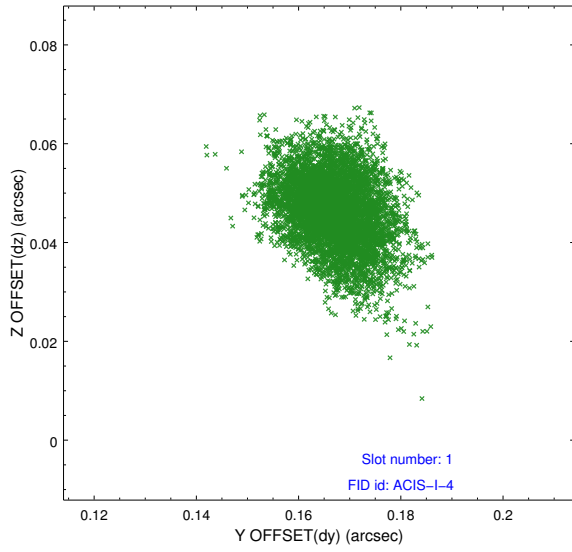


2.5 FID Slots

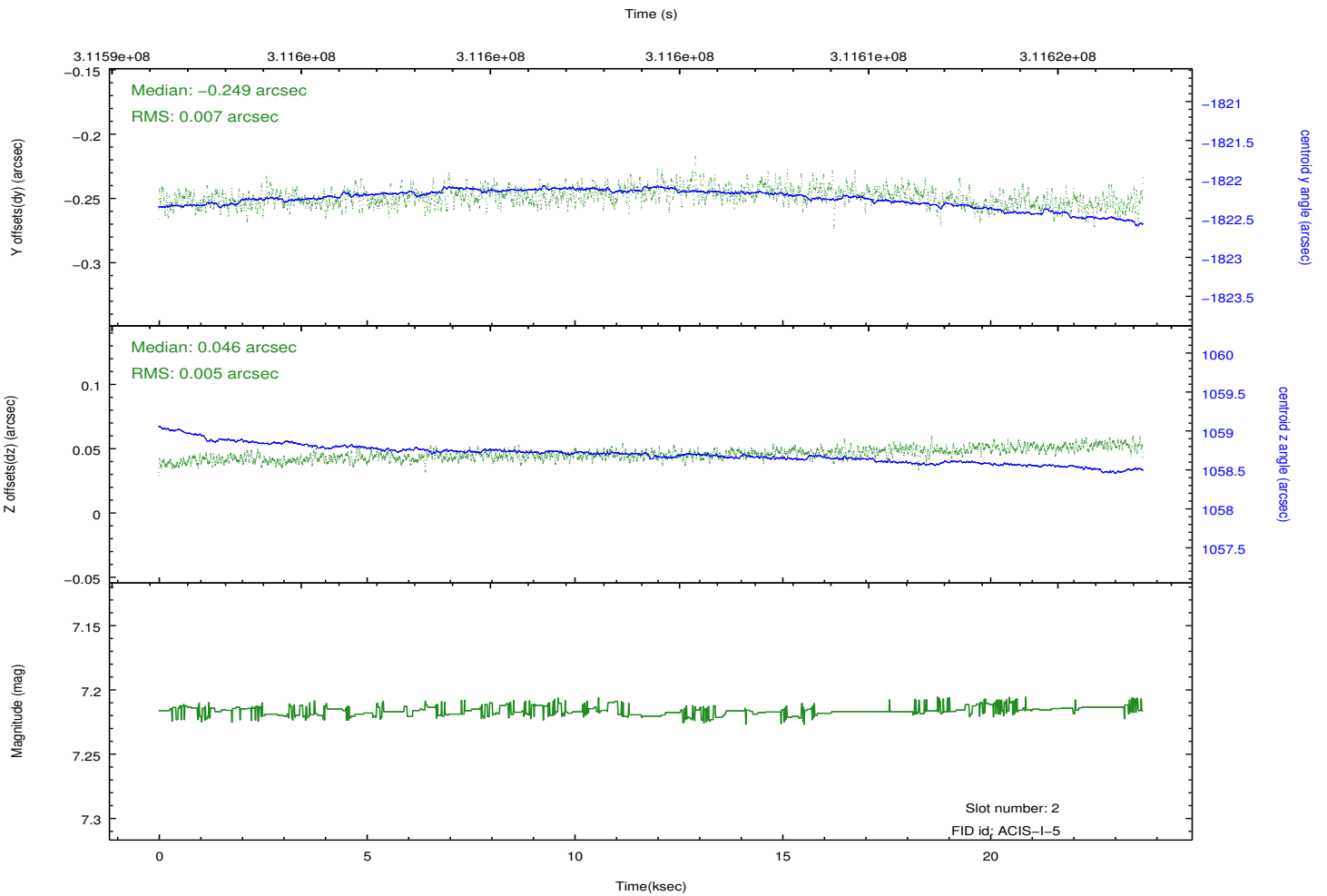
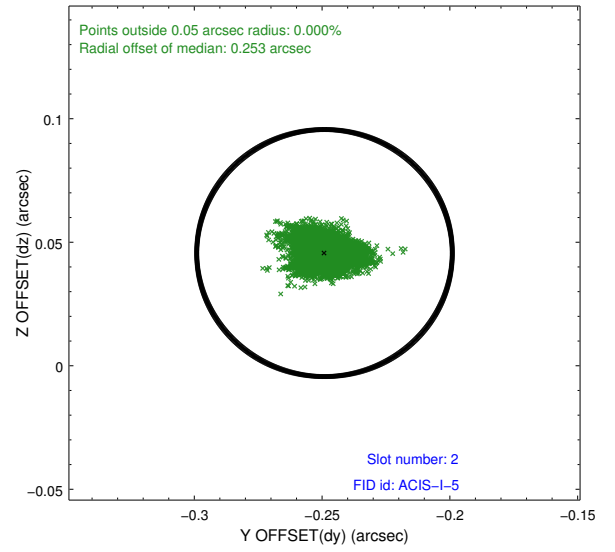
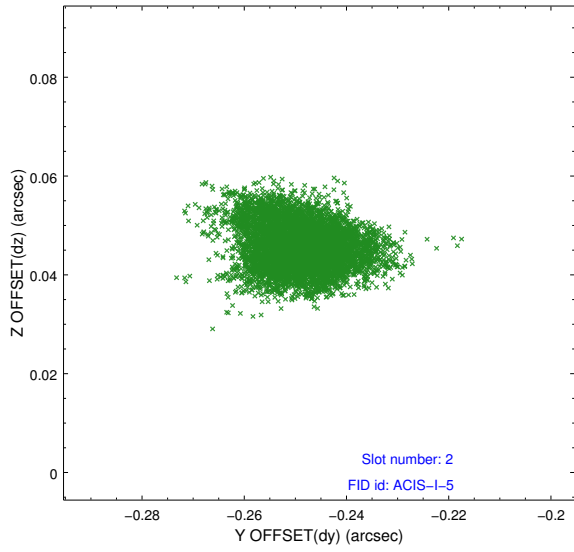
2.5.1 Slot 0



2.5.2 Slot 1



2.5.3 Slot 2



A Summary

A.1 Status

V&V Scientist	Jen Lauer
V&V Date (YYYY-MM-DD)	2012.05.07
V&V Edition	1
V&V Disposition and Status	OK
V&V Charge Time	23.6703999

A.2 Comments

Roll preference met.