

# V&V Reference Report

## L2 ASCDS Version : 8.4.4

Observation 9838 - L2 Version 2  
Chandra X-Ray Center

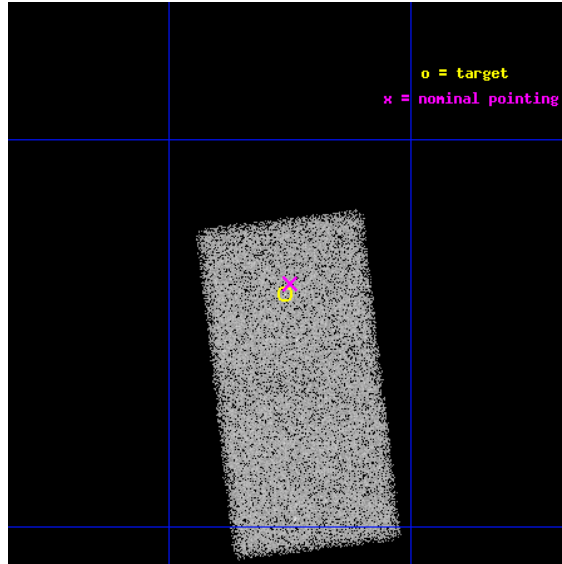
L2 Processing Date : May 11 2012

## Contents

<b>1</b>	<b>Front</b>	<b>2</b>
<b>2</b>	<b>OBI</b>	<b>3</b>
2.1	OBI . . . . .	3
2.1.1	Images . . . . .	3
2.1.2	Bias . . . . .	3
2.1.3	Parameters . . . . .	4
2.1.4	Events . . . . .	4
2.2	Compared Parameters . . . . .	5
2.3	Aspect . . . . .	6
2.4	Star Slots . . . . .	9
2.4.1	Slot 3 . . . . .	9
2.4.2	Slot 4 . . . . .	10
2.4.3	Slot 5 . . . . .	11
2.4.4	Slot 6 . . . . .	12
2.4.5	Slot 7 . . . . .	13
2.5	FID Slots . . . . .	14
2.5.1	Slot 0 . . . . .	14
2.5.2	Slot 1 . . . . .	15
2.5.3	Slot 2 . . . . .	16
<b>A</b>	<b>Summary</b>	<b>17</b>
A.1	Status . . . . .	17
A.2	Comments . . . . .	17

# 1 Front

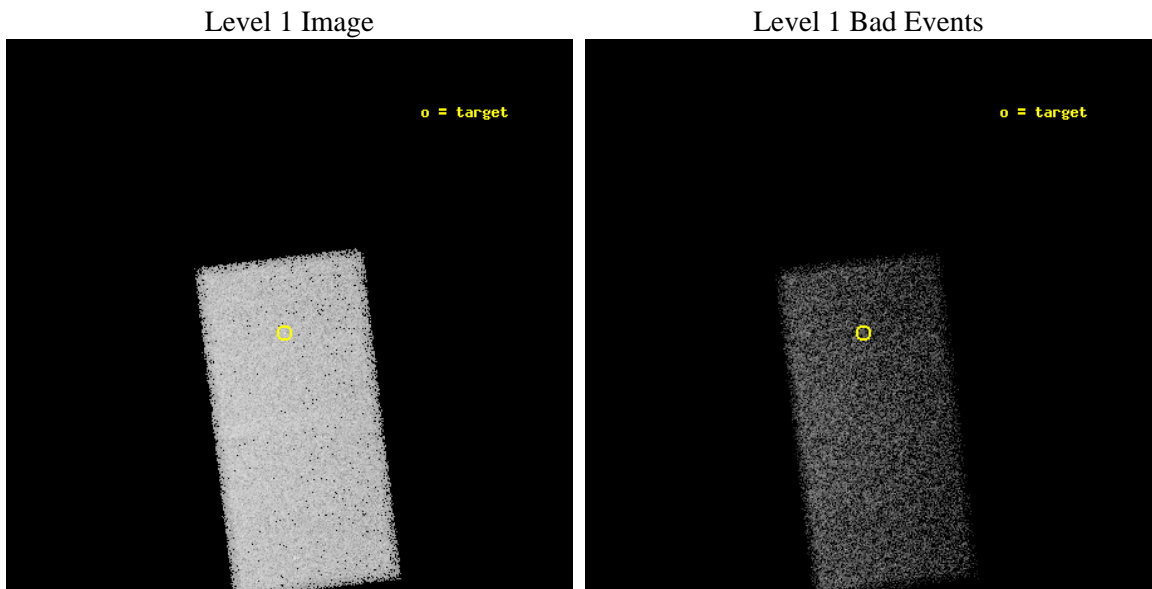
seq_num	400841	Sequence number
obs_id	9838	Observation id
title	Following a black hole candidate X-ray transient to quiescence	Pro
observer	dr Peter Jonker	Principal investigator
object	H 1743-322	Source name
dtycycle	0	&#160
cycle	P	events from which exps? Prim/Second/Both
ra_targ	266.565	Observer's specified target RA [deg]
dec_targ	-32.2333	Observer's specified target Dec [deg]
ra_nom	266.56258342999	Nominal RA [deg]
dec_nom	-32.228927244846	Nominal Dec [deg]
roll_nom	83.155337646373	Nominal Roll [deg]
revision	2	Processing version of data
ontime	24448.5	Sum of GTIs [s]
livetime	23797.403052484	Livetime [s]
ontime7	24448.5	Sum of GTIs [s]
l2events	69943	Number of level 2 events



## 2 OBI

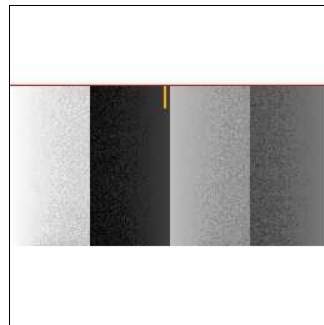
### 2.1 OBI

#### 2.1.1 Images



#### 2.1.2 Bias

Chip 7



### 2.1.3 Parameters

obi_num	0	Obi number	sched_exp_time	24300.000000	[s] Scheduled observation exposure time
ascdsver	8.4.4	Processing system revision	ontime	24448.5	Sum of GTIs [s]
caldbver	4.4.9	&#160	ontime7	24448.5	Sum of GTIs [s]
date	2012-05-12T00:16:06	Date and time of file creation	l1events	171029	Number of level 1 events
revision	2	Processing version of data			

### 2.1.4 Events

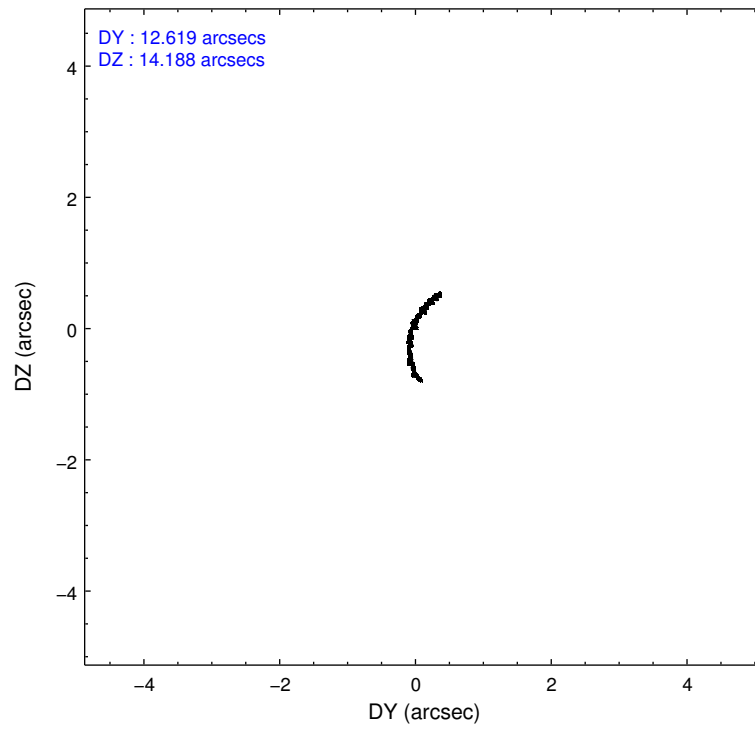
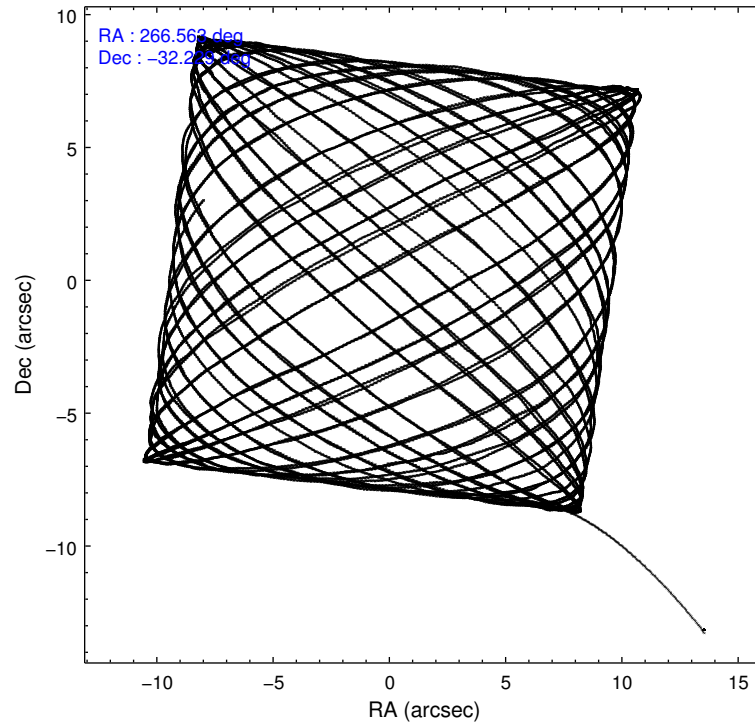
	<b>ccd 7</b>
level 1 events	171029
rejected events	99106
rejected %	57%

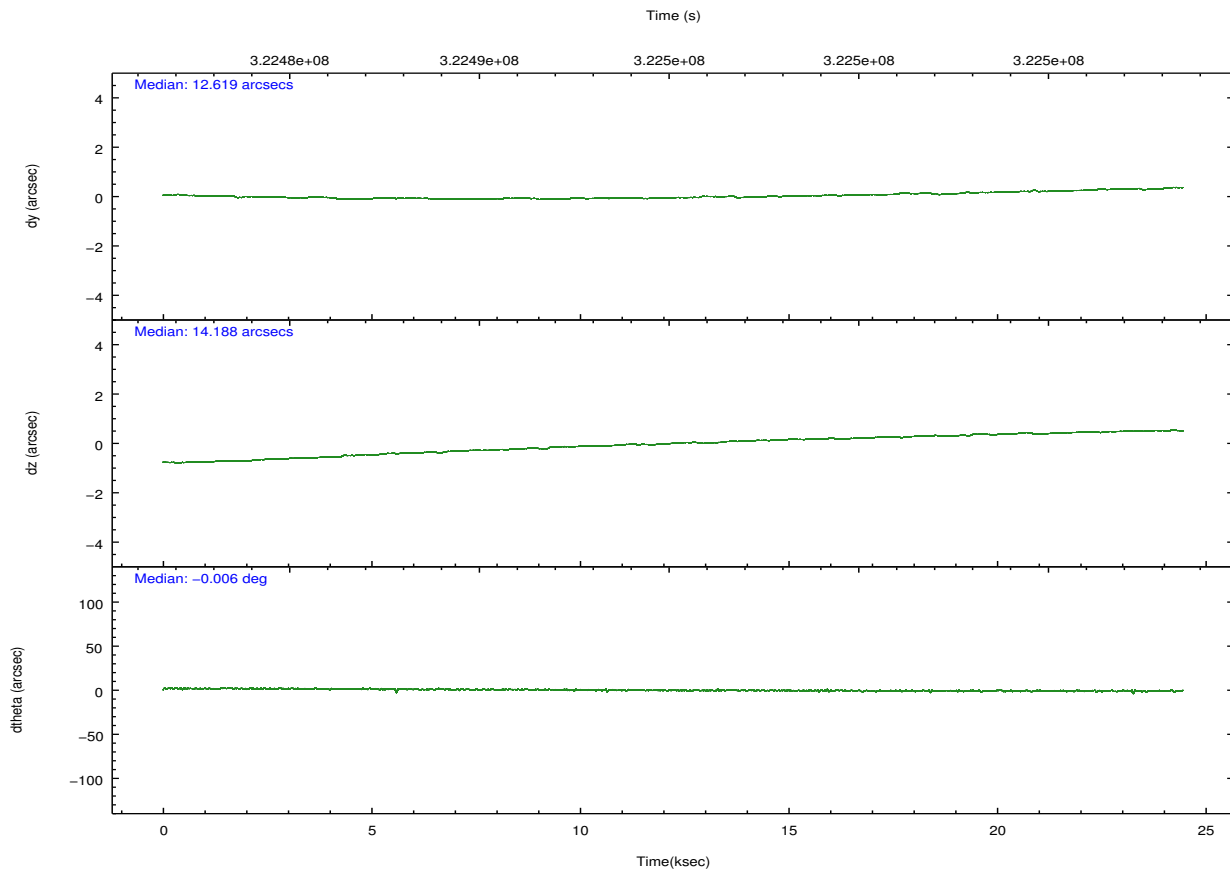
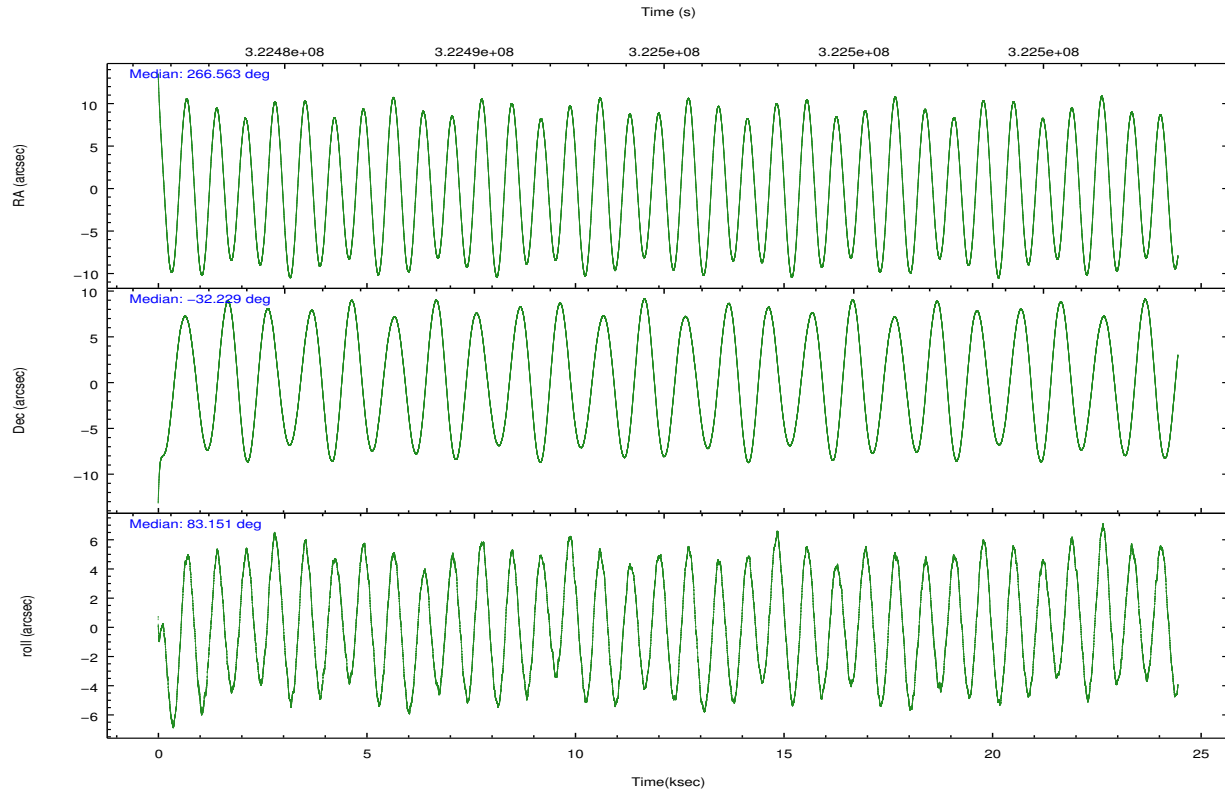
	<b>ccd 7</b>
grade 0 events	6933
	4%
grade 1 events	184
	0%
grade 2 events	15090
	8%
grade 3 events	7262
	4%
grade 4 events	7120
	4%
grade 5 events	16122
	9%
grade 6 events	38299
	22%
grade 7 events	80019
	46%

## 2.2 Compared Parameters

Parameter	Planned	Actual	Parameter	Planned	Actual
Instrument	ACIS	ACIS	Obspar format version number	7	7
Detector	ACIS-7	ACIS-7	Obspar file type	PREDICTED	ACTUAL
Grating	NONE	NONE	Obspar update status	NONE	UPDATED
Data mode	VFAINT	VFAINT	Number of optional ACIS chips dropped	0	0
Observation mode	POINTING	POINTING	On-chip summing requested	N	N
[deg] Pointing RA	266.575708	266.5625834299868	Subarray requested	CUSTOM	1/2
[deg] Pointing Dec	-32.253897	-32.22892724484566	Subarray start row	257	257
[deg] Pointing Roll	83.005718	83.15533764637333	Subarray row count	512	512
[mm] SIM focus pos	-0.684267	-0.6828225247311905	Alternating exposures requested	N	N
[mm] SIM defocus	0	0.001444936568705701	[s] Primary exposure time	0.000000	1.5
[mm] SIM translation stage pos	-190.132523	-190.1425803651734			
[mm] SIM translation stage offset	0	0.01005778216563158			
[s] Observation start time (MET)	322483024.184000	322481904.29011			
Observation start date	2008-03-21T10:35:59	2008-03-21T10:18:24			
[s] Observation end time (MET)	322507324.184000	322508016.16638			
Observation end date	2008-03-21T17:20:59	2008-03-21T17:33:36			
Read mode	TIMED	TIMED			

## 2.3 Aspect



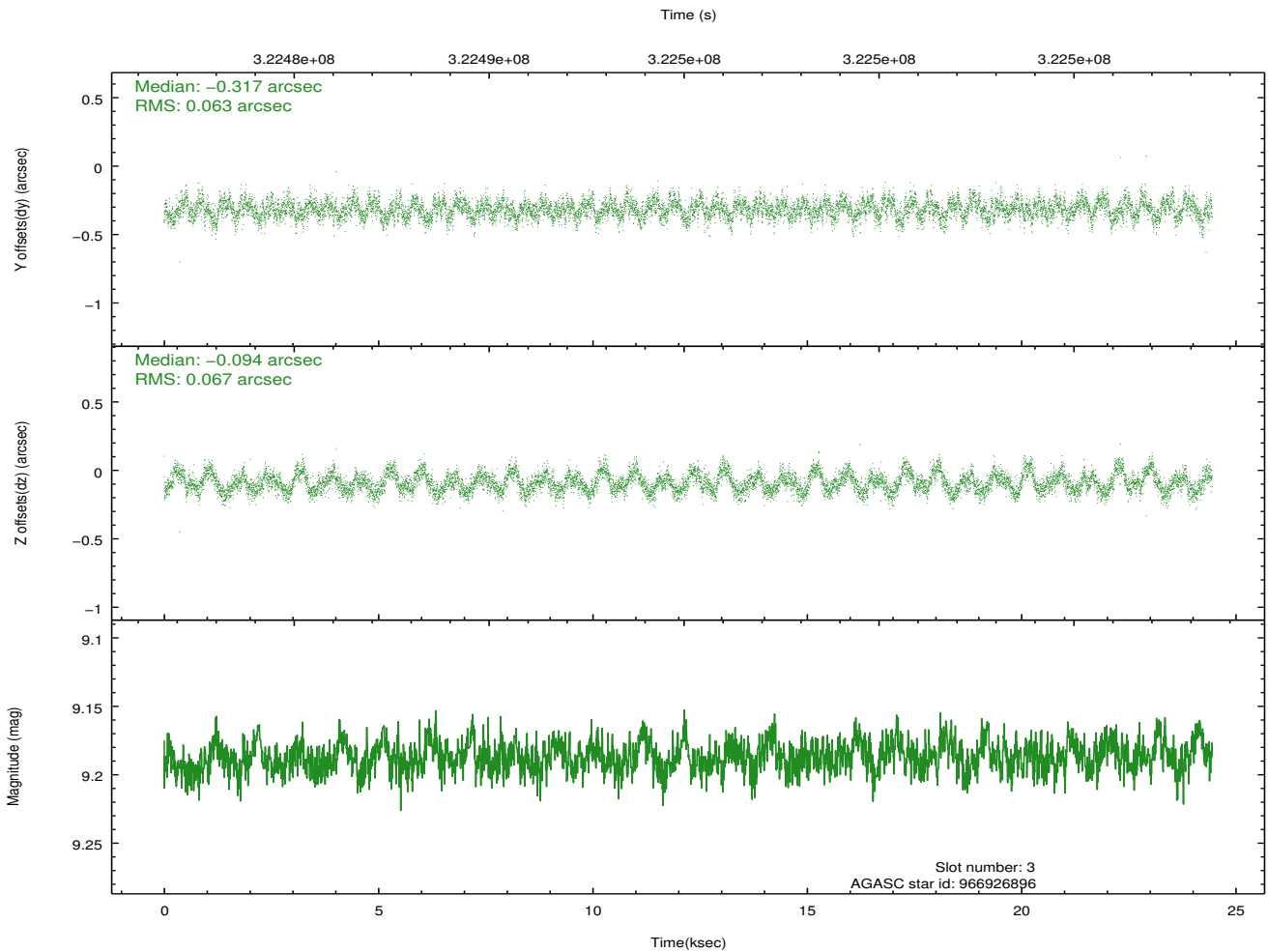
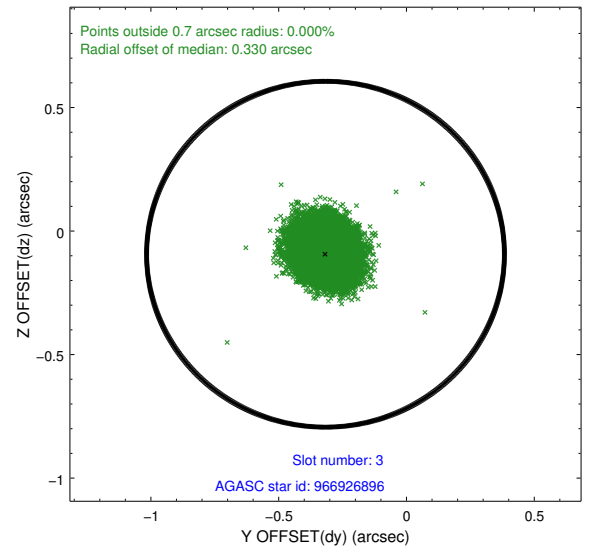
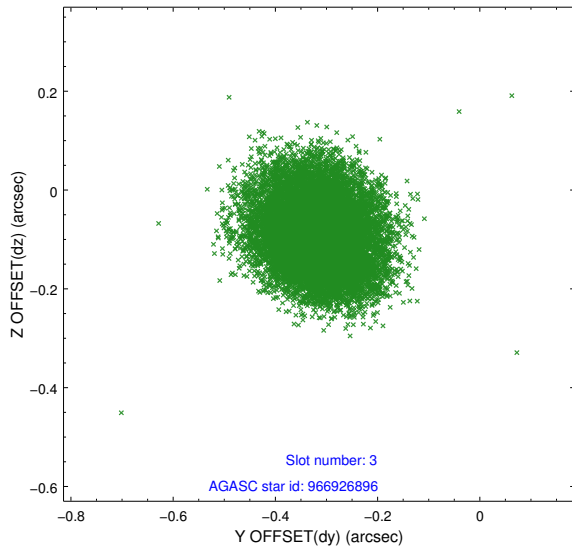


### Slot Statistics

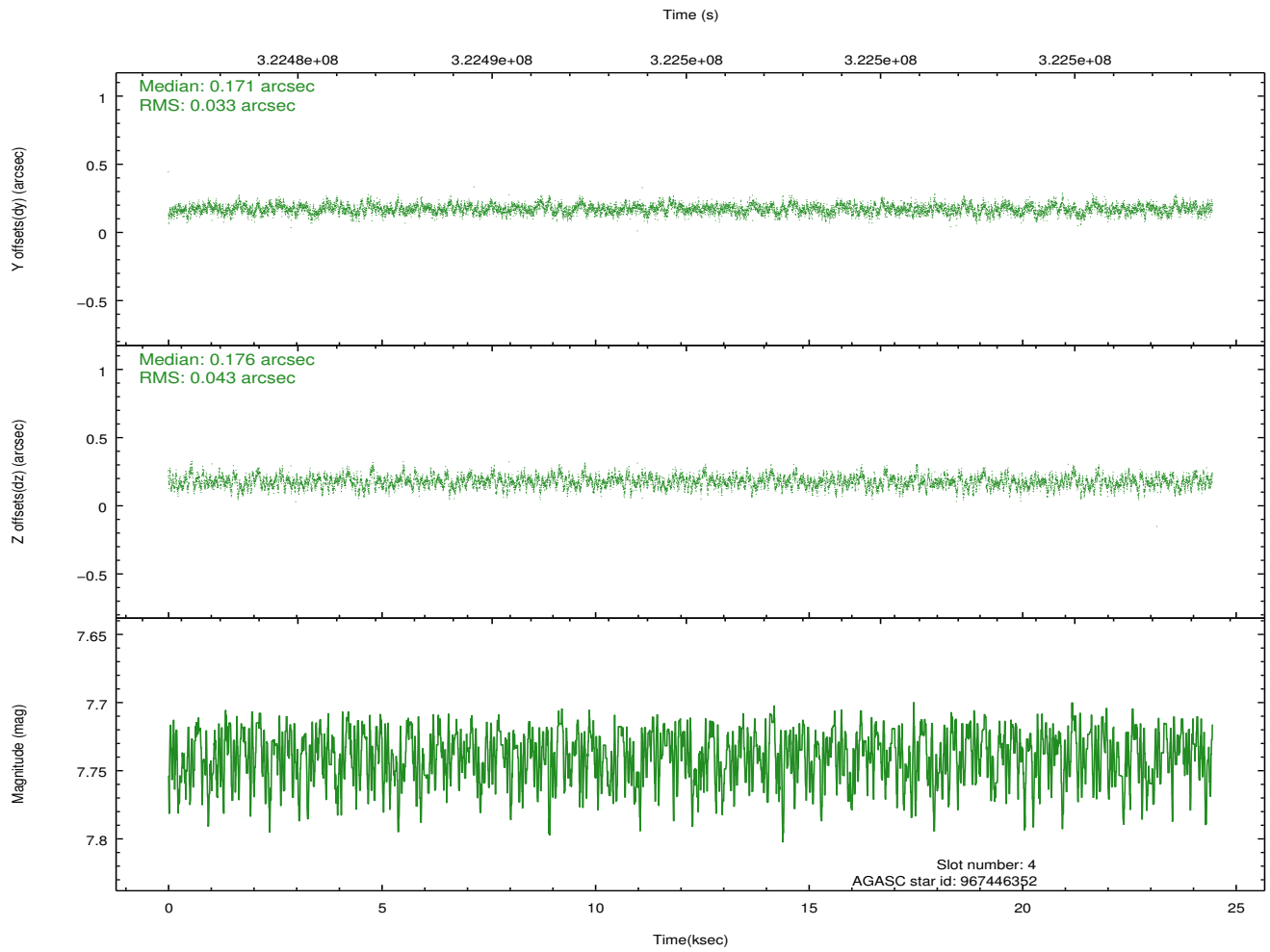
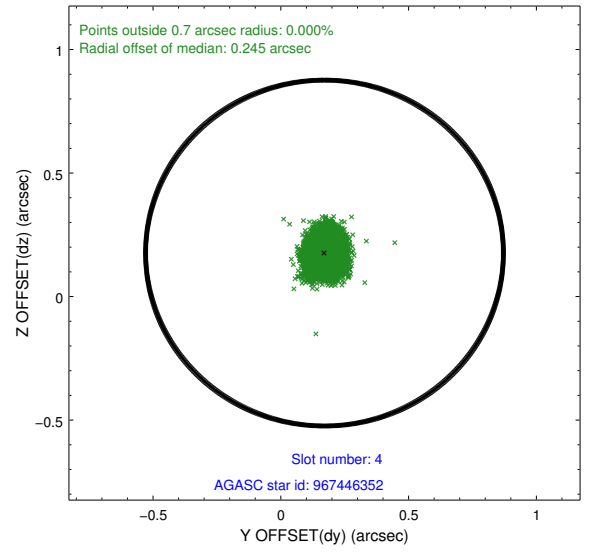
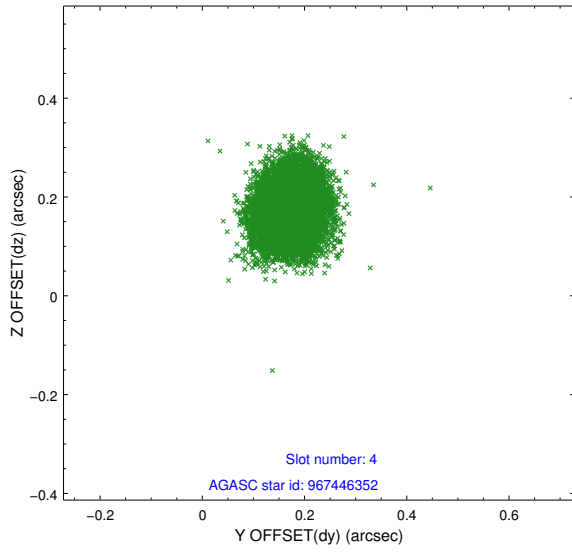
slot	status	id	mag	n_pts	med_dy	med_dz	dr1	dr2	ra	dec	mean_y	mean_z
0	FID	ACIS-S-1	7.19	5964	0.085	-0.046	0.011	0.017	0.000000	0.000000	930.58	-1731.10
1	FID	ACIS-S-5	7.23	5963	-0.133	0.061	0.012	0.018	0.000000	0.000000	-1818.59	166.40
2	FID	ACIS-S-6	7.33	5964	0.026	-0.006	0.018	0.030	0.000000	0.000000	395.91	810.46
3	GUIDE	966926896	9.19	11918	-0.317	-0.094	0.099	0.156	266.197771	-31.663459	1966.52	1408.19
4	GUIDE	967446352	7.74	11910	0.171	0.176	0.057	0.094	267.069988	-32.671157	-1311.74	-1669.65
5	GUIDE	967447616	9.28	11900	0.179	0.420	0.099	0.160	267.260141	-32.889782	-2026.47	-2333.08
6	GUIDE	966927176	9.02	11921	-0.170	-0.212	0.093	0.146	265.946853	-31.673679	1832.80	2165.88
7	GUIDE	967448136	8.83	11918	0.141	-0.294	0.090	0.141	265.900071	-32.546602	-1301.68	1905.84

## 2.4 Star Slots

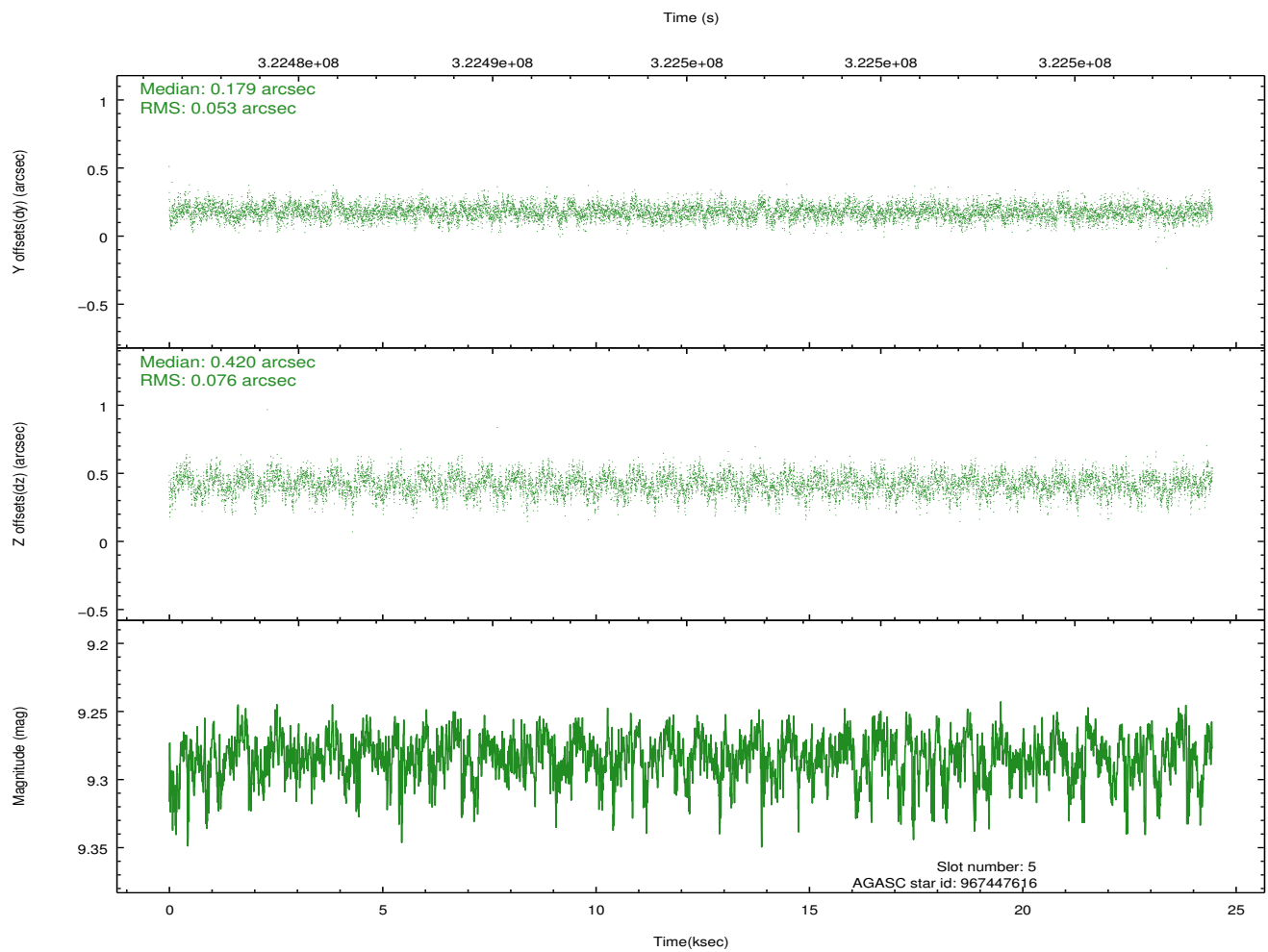
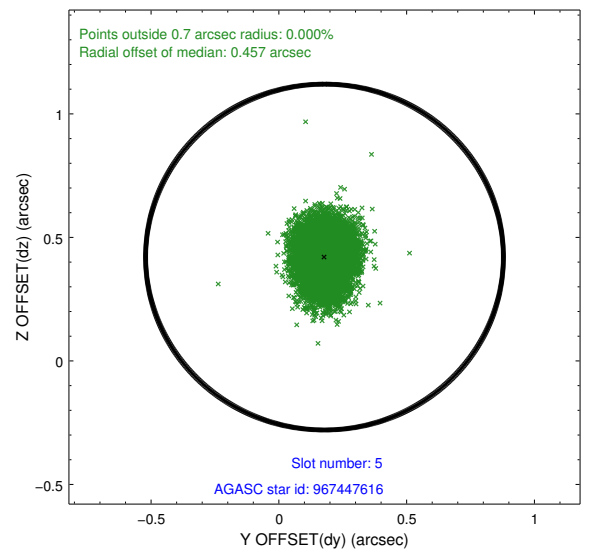
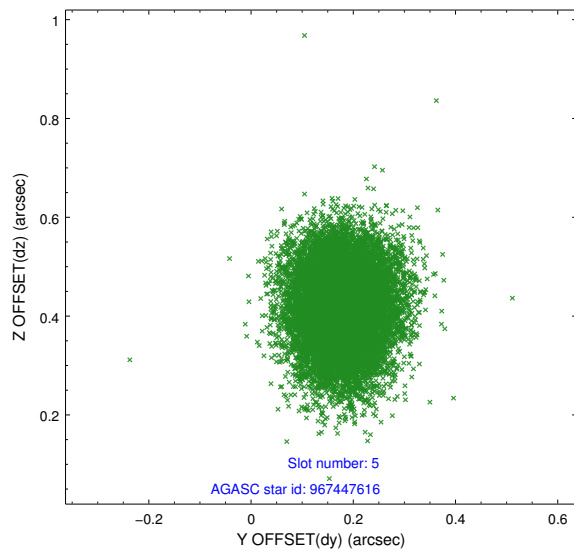
### 2.4.1 Slot 3



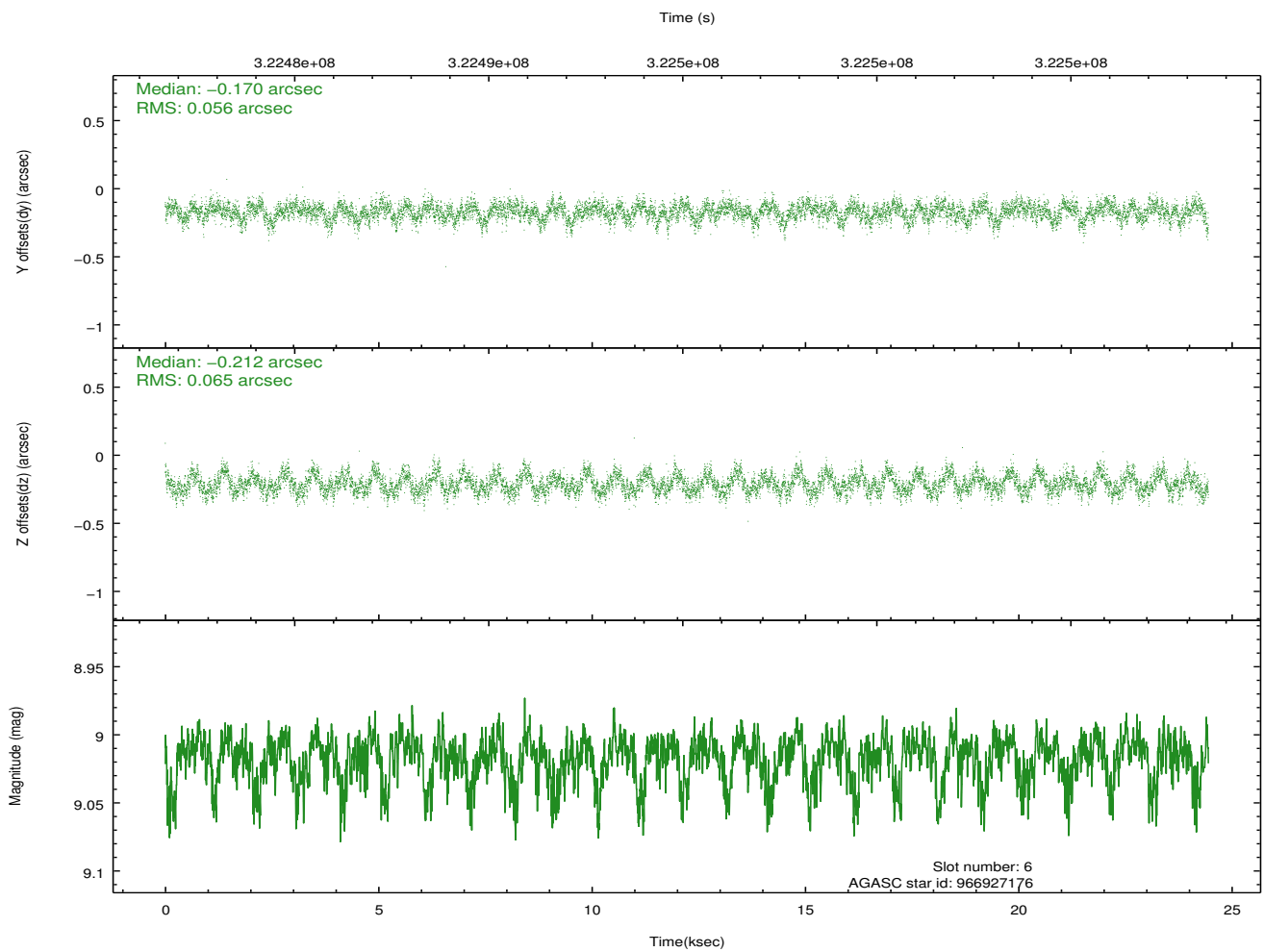
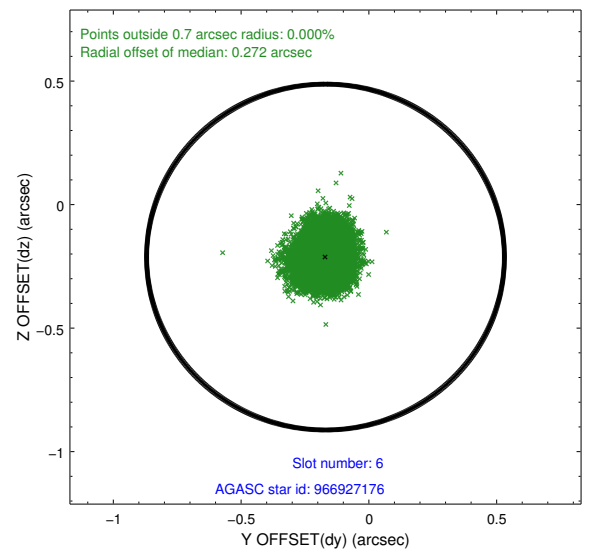
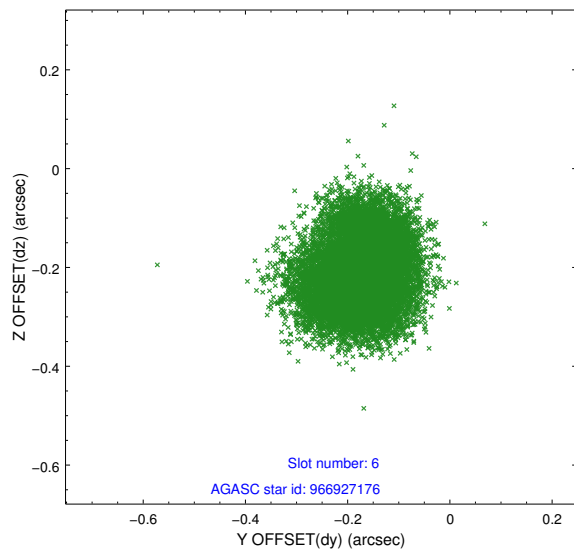
### 2.4.2 Slot 4



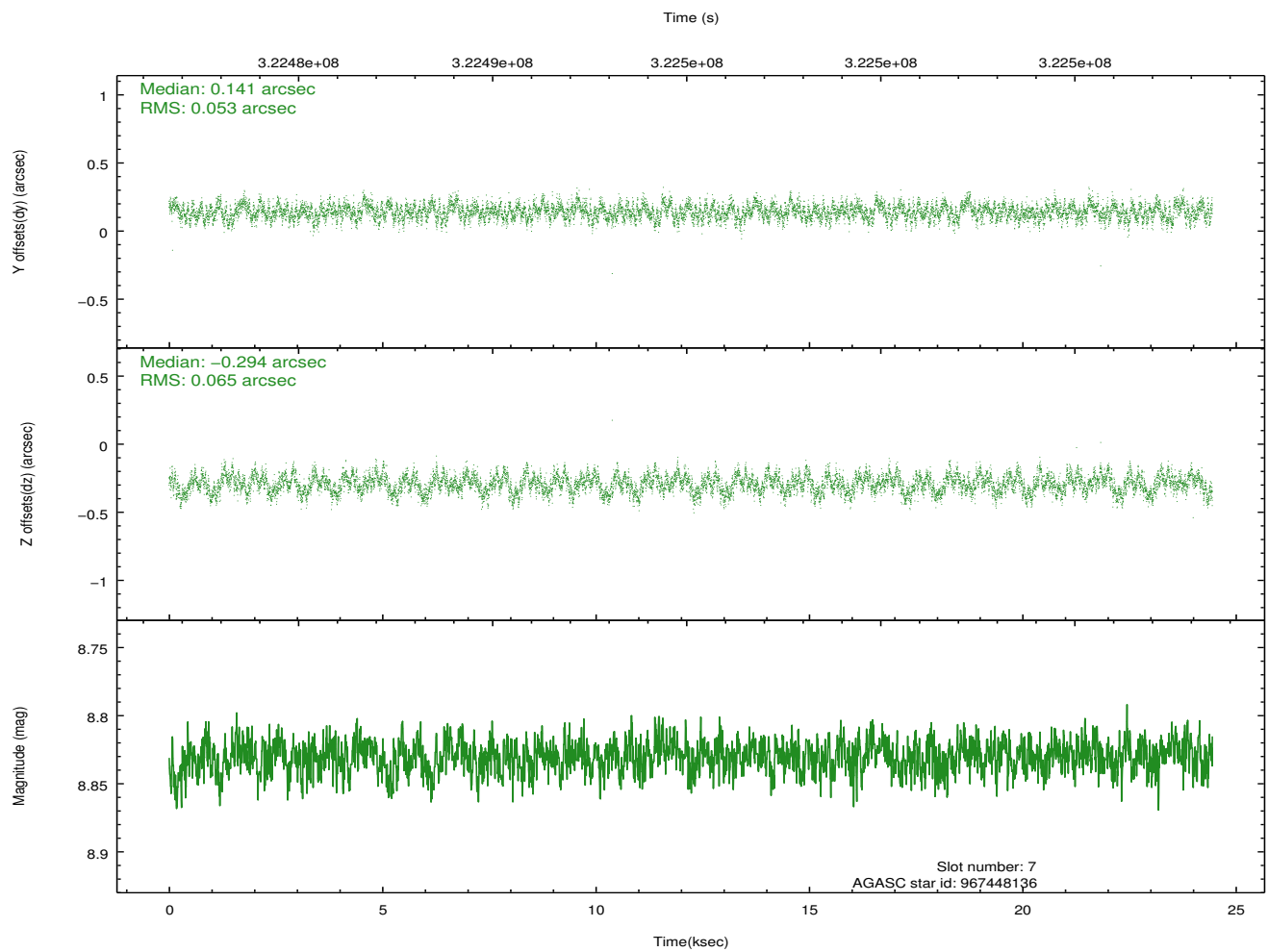
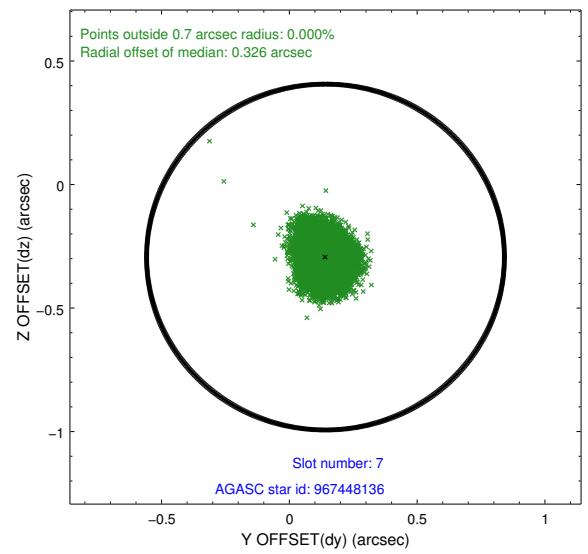
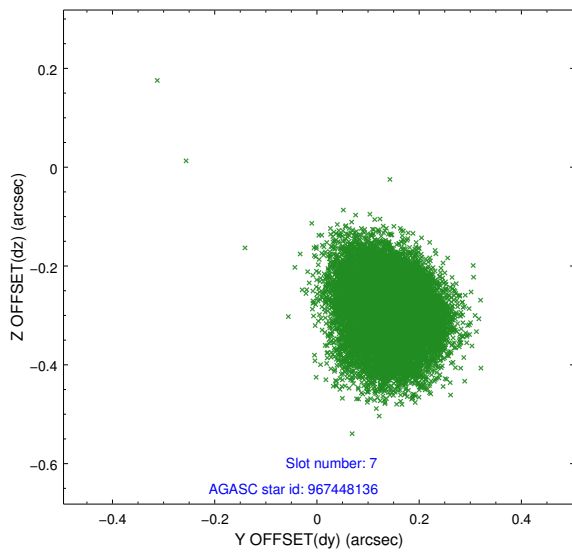
### 2.4.3 Slot 5



## 2.4.4 Slot 6

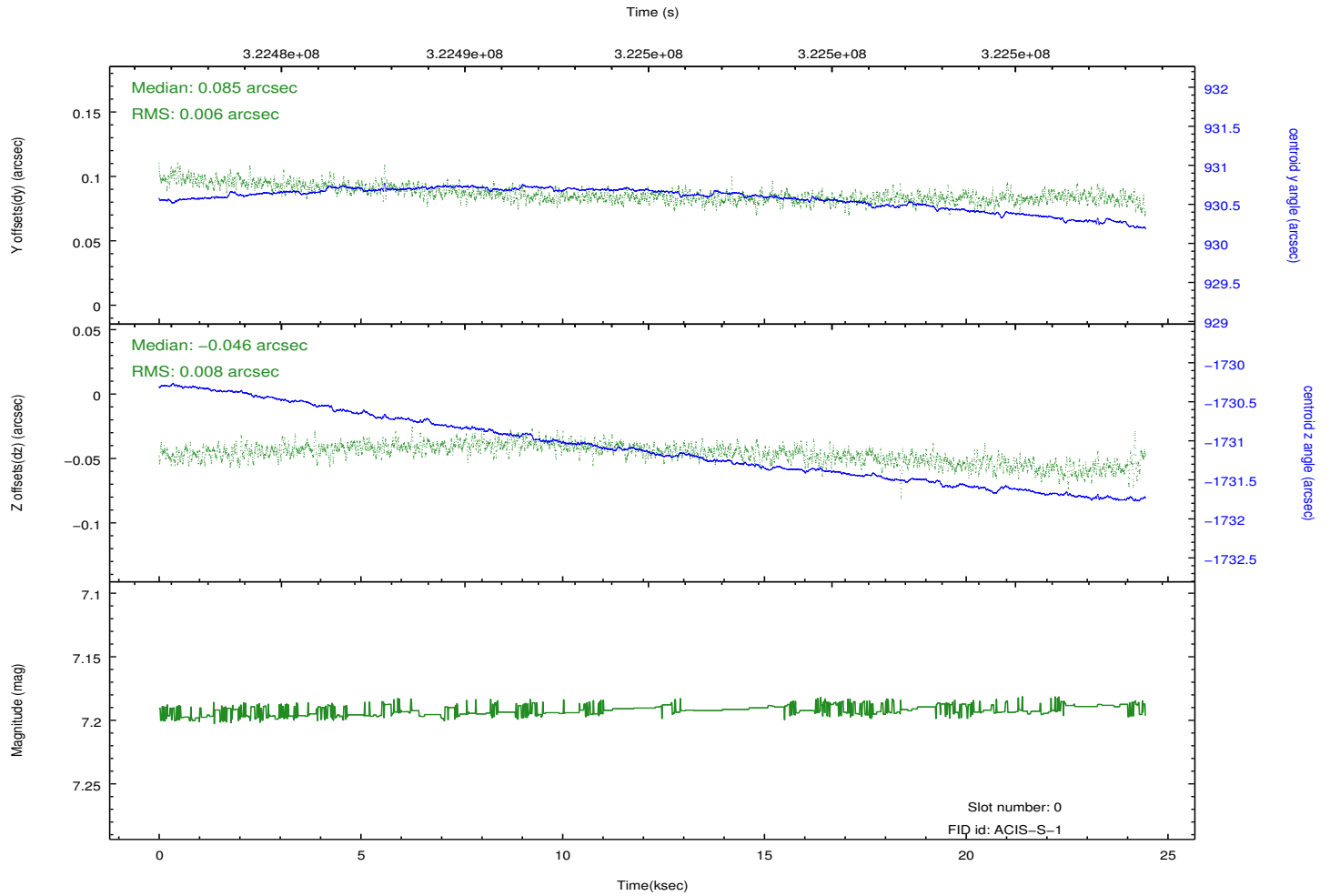
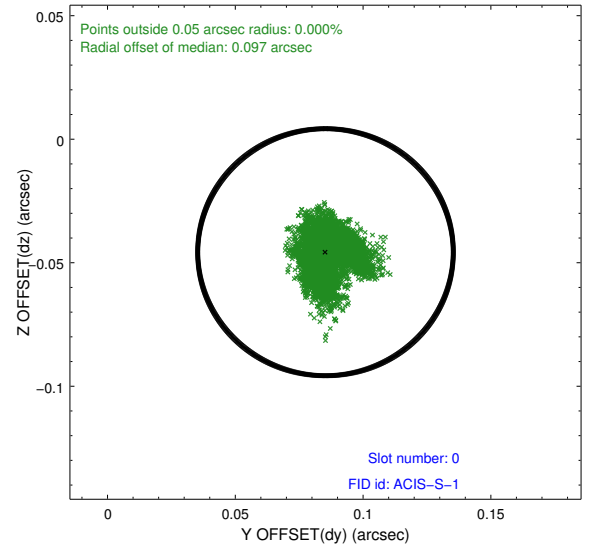
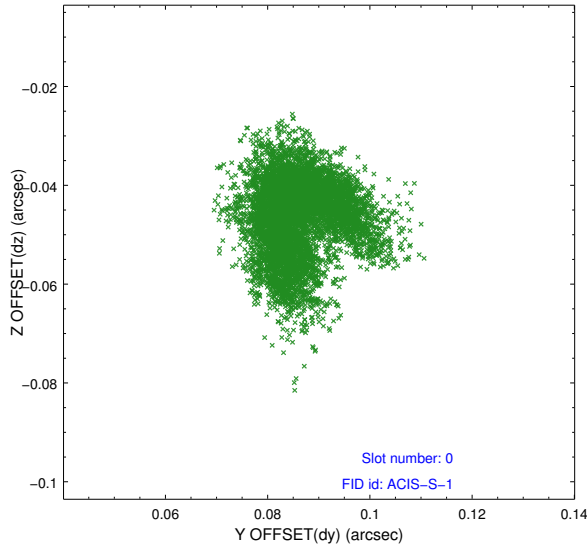


## 2.4.5 Slot 7

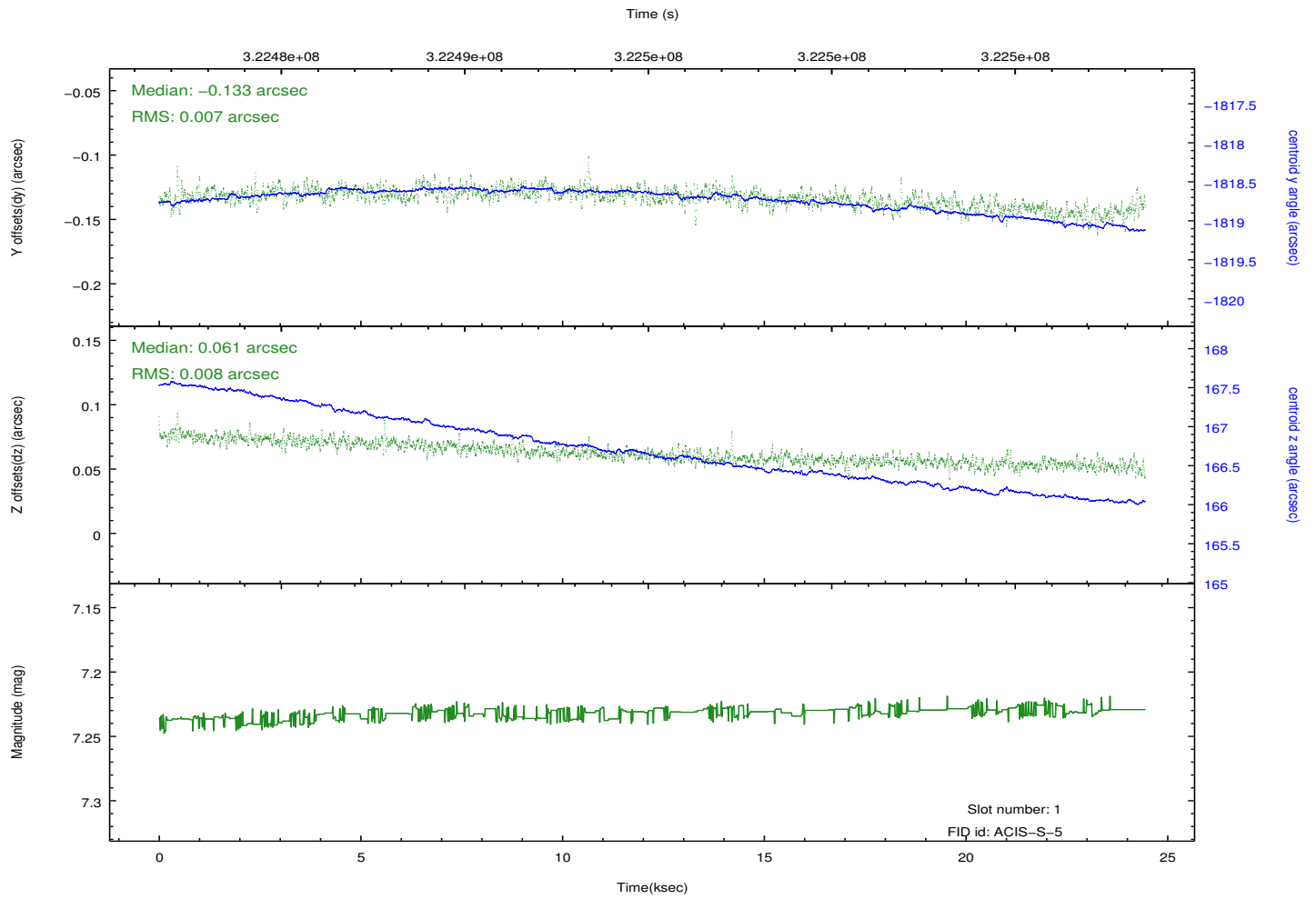
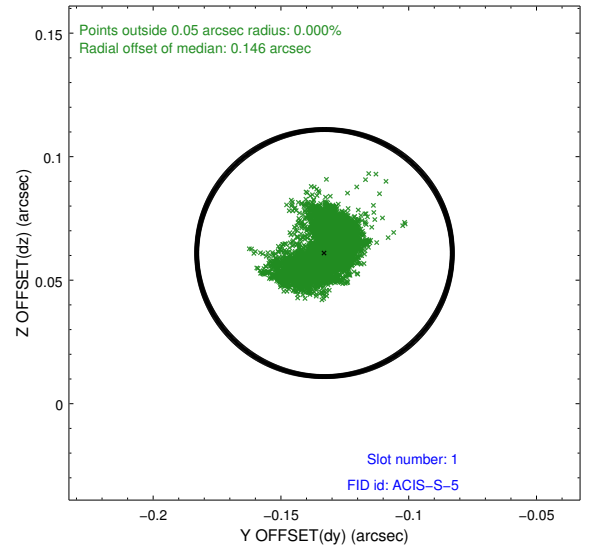
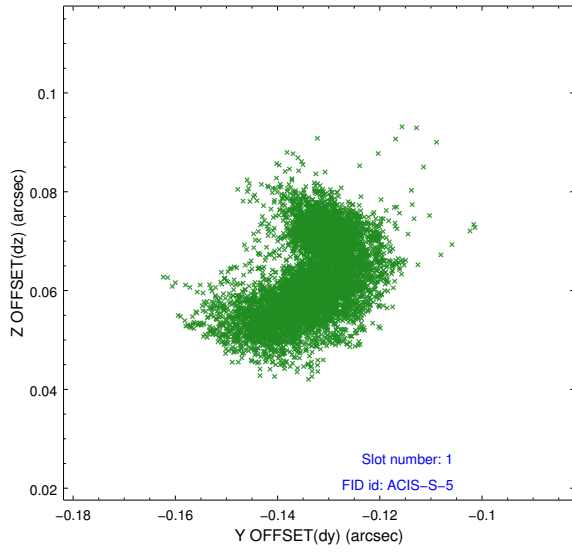


## 2.5 FID Slots

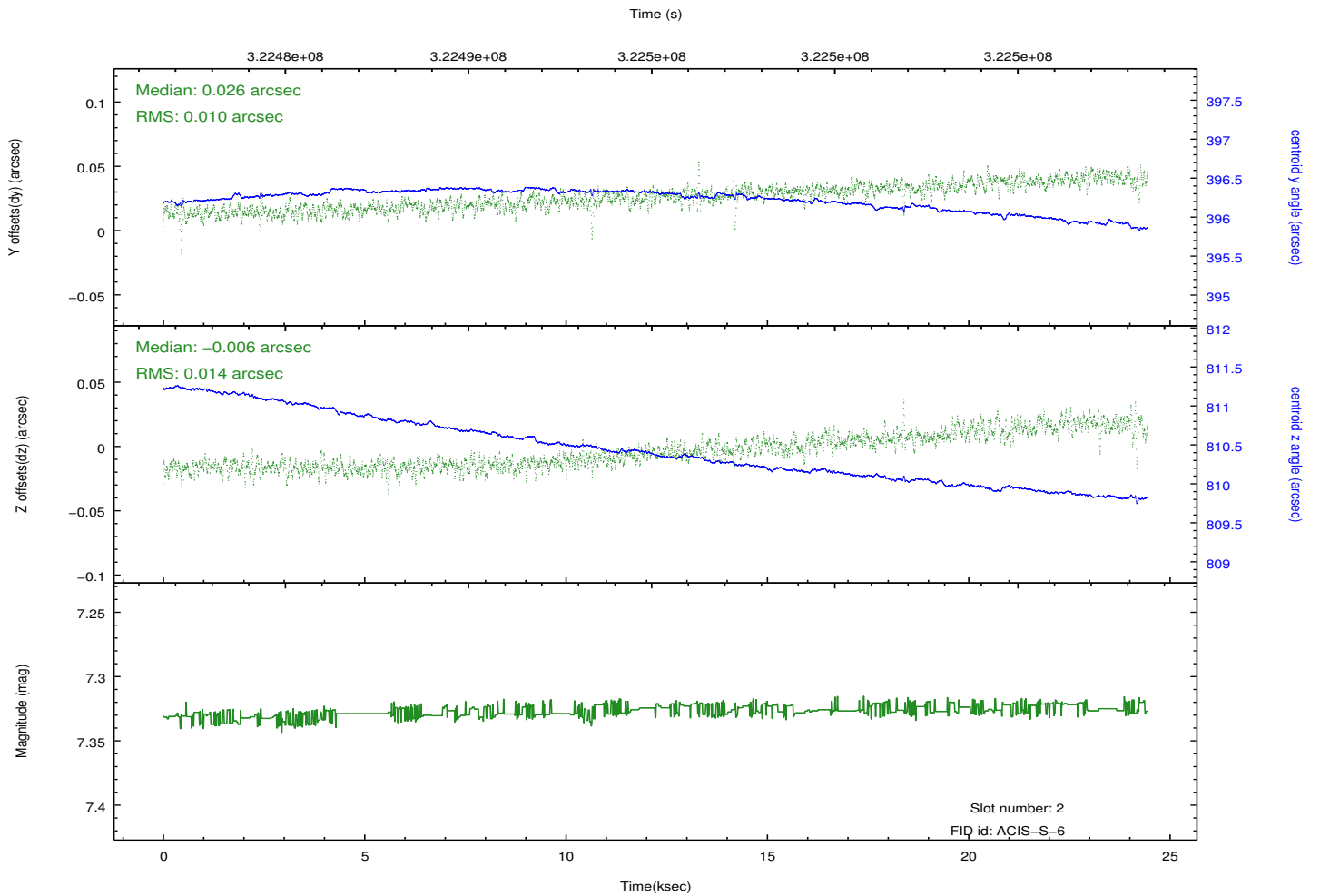
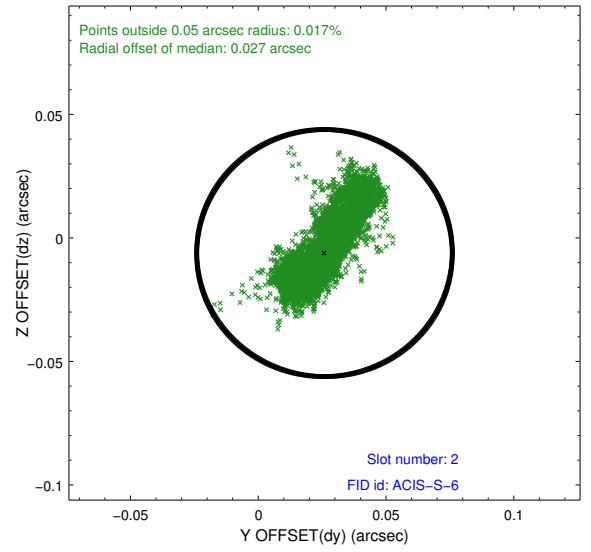
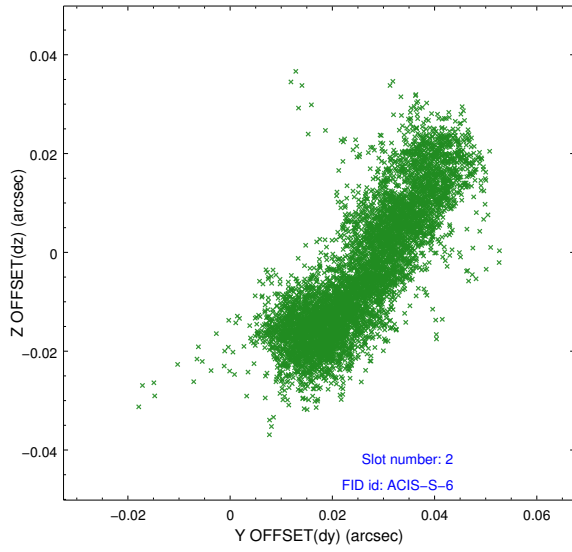
### 2.5.1 Slot 0



## 2.5.2 Slot 1



### 2.5.3 Slot 2



# A Summary

## A.1 Status

V&V Scientist	Jen Lauer
V&V Date (YYYY-MM-DD)	2012.05.14
V&V Edition	1
V&V Disposition and Status	OK
V&V Charge Time	24.4485

## A.2 Comments

Joint Proposal: NRAO