

V&V Reference Report

L2 ASCDS Version : 8.4.4

Observation 9958 - L2 Version 2
Chandra X-Ray Center

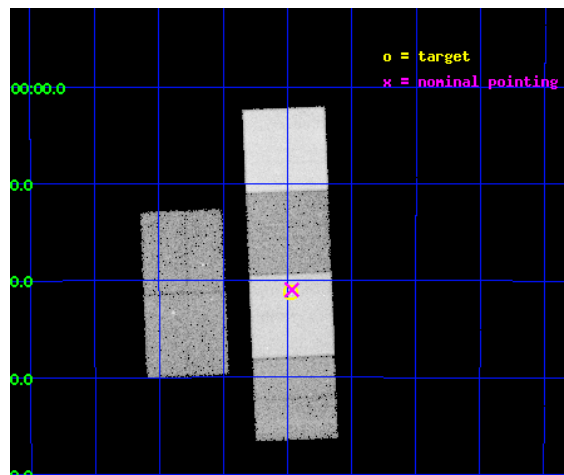
L2 Processing Date : May 31 2012

Contents

1	Front	2
2	OBI	3
2.1	OBI	3
2.1.1	Images	3
2.1.2	Bias	3
2.1.3	Parameters	4
2.1.4	Events	4
2.2	Compared Parameters	5
2.3	Aspect	6
2.4	Star Slots	9
2.4.1	Slot 3	9
2.4.2	Slot 4	10
2.4.3	Slot 5	11
2.4.4	Slot 6	12
2.4.5	Slot 7	13
2.5	FID Slots	14
2.5.1	Slot 0	14
2.5.2	Slot 1	15
2.5.3	Slot 2	16
A	Summary	17
A.1	Status	17
A.2	Comments	17

1 Front

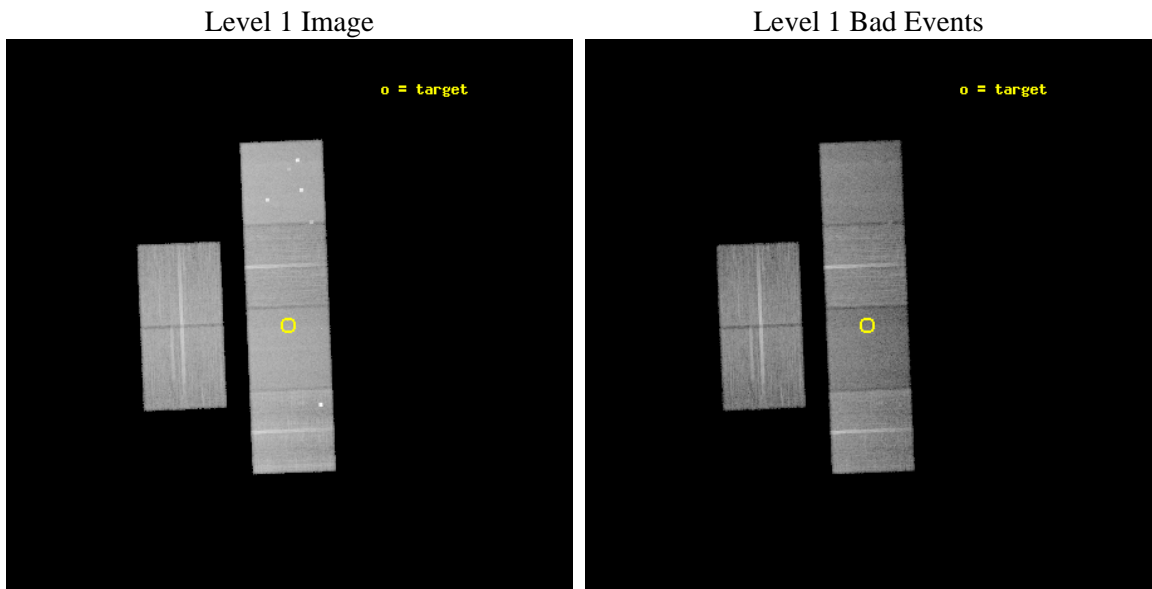
seq_num	300245	Sequence number
obs_id	9958	Observation id
title	Understanding the Current Dynamical States of Globular Clusters	Pr
observer	Prof. David Pooley	Principal investigator
object	NGC 6355	Source name
dtcycle	0	
cycle	P	events from which exps? Prim/Second/Both
ra_targ	260.994167	Observer's specified target RA [deg]
dec_targ	-26.353611	Observer's specified target Dec [deg]
ra_nom	260.99150311578	Nominal RA [deg]
dec_nom	-26.349375613353	Nominal Dec [deg]
roll_nom	87.664791099655	Nominal Roll [deg]
revision	2	Processing version of data
ontime	23139.199913859	Sum of GTIs [s]
livetime	22846.197431797	Livetime [s]
ontime2	23135.958923638	Sum of GTIs [s]
ontime3	23139.199913859	Sum of GTIs [s]
ontime5	23139.199913859	Sum of GTIs [s]
ontime6	23139.199913859	Sum of GTIs [s]
ontime7	23139.199913859	Sum of GTIs [s]
ontime8	23139.199913859	Sum of GTIs [s]
l2events	312294	Number of level 2 events



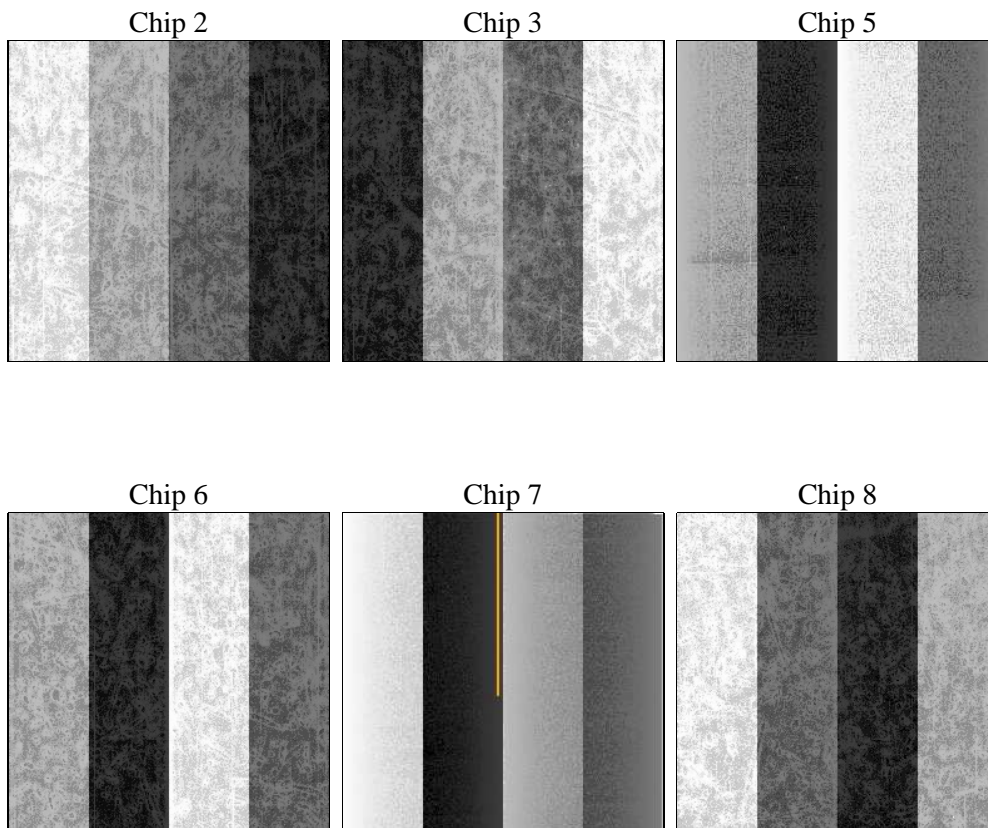
2 OBI

2.1 OBI

2.1.1 Images



2.1.2 Bias



2.1.3 Parameters

obi_num	0	Obi number	sched_exp_time	23000.000000	[s] Scheduled observation exposure time
ascdsver	8.4.4	Processing system revision	ontime	23139.199913859	Sum of GTIs [s]
caldbver	4.4.9	 	ontime2	23135.958923638	Sum of GTIs [s]
date	2012-05-31T15:28:18	Date and time of file creation	ontime3	23139.199913859	Sum of GTIs [s]
revision	2	Processing version of data	ontime5	23139.199913859	Sum of GTIs [s]
			ontime6	23139.199913859	Sum of GTIs [s]
			ontime7	23139.199913859	Sum of GTIs [s]
			ontime8	23139.199913859	Sum of GTIs [s]
			l1events	1394503	Number of level 1 events

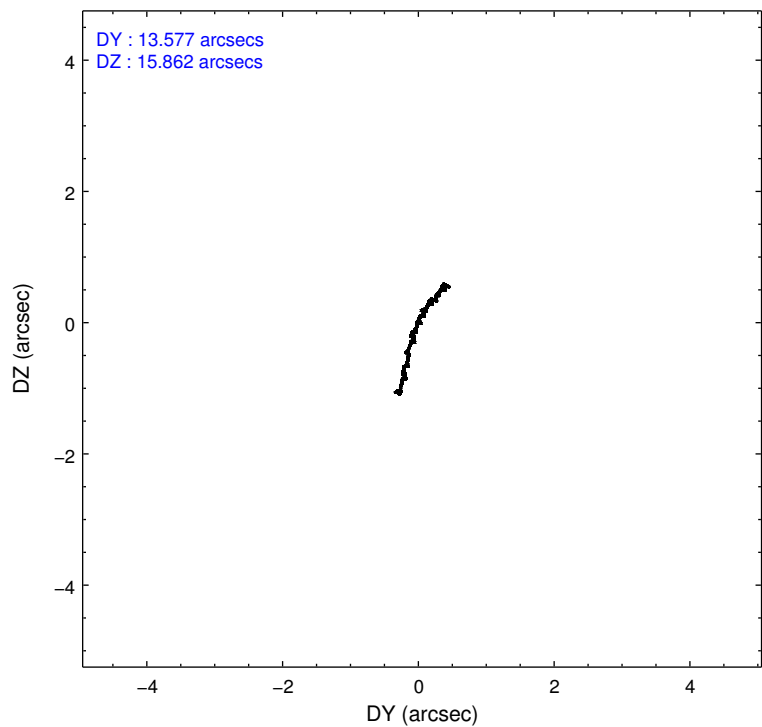
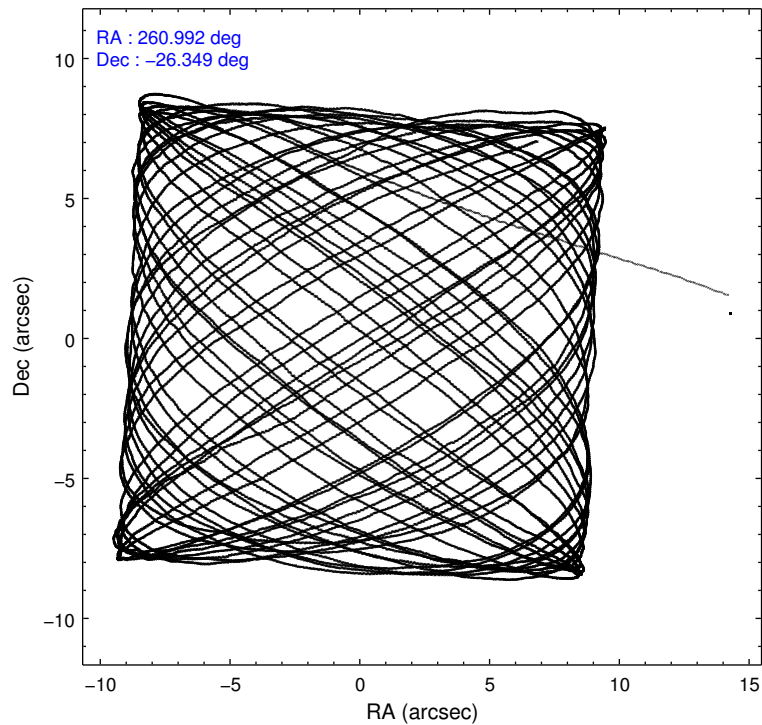
2.1.4 Events

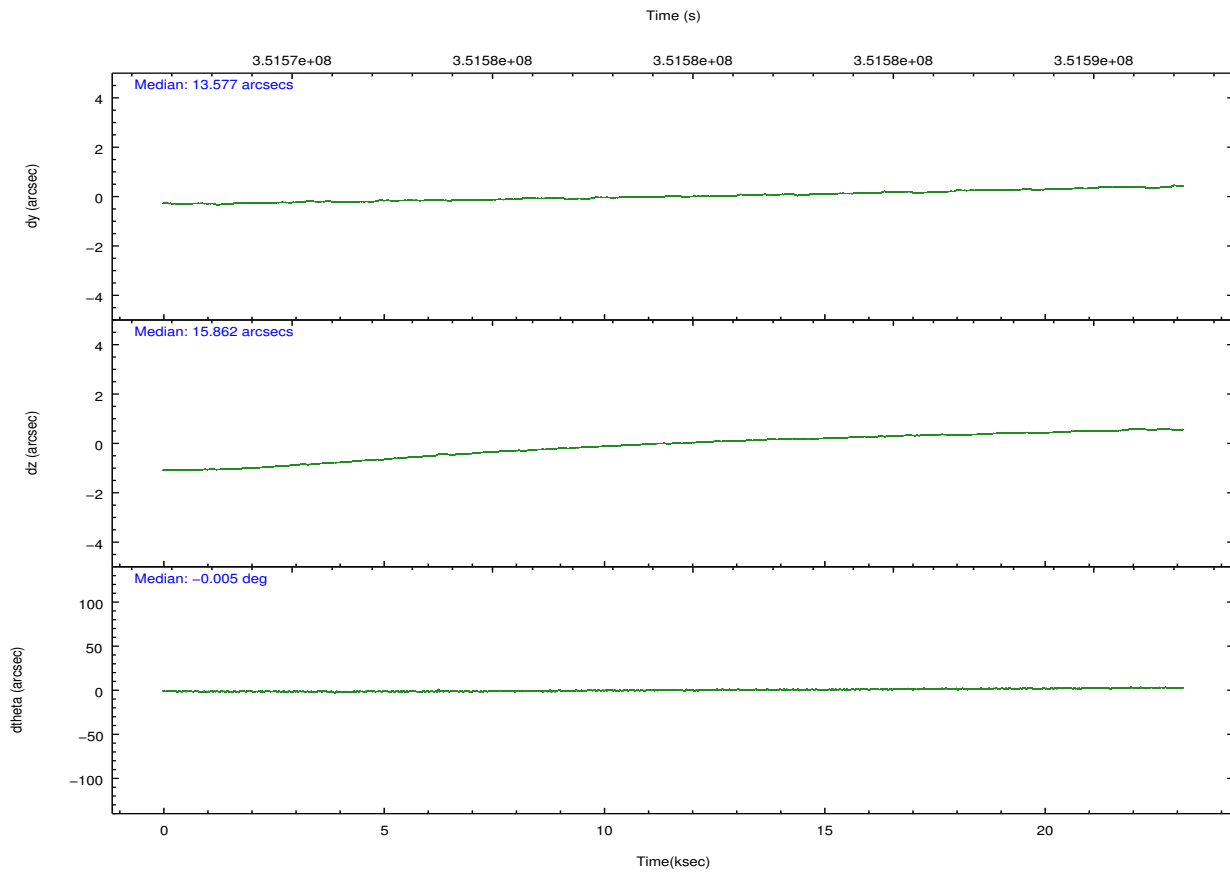
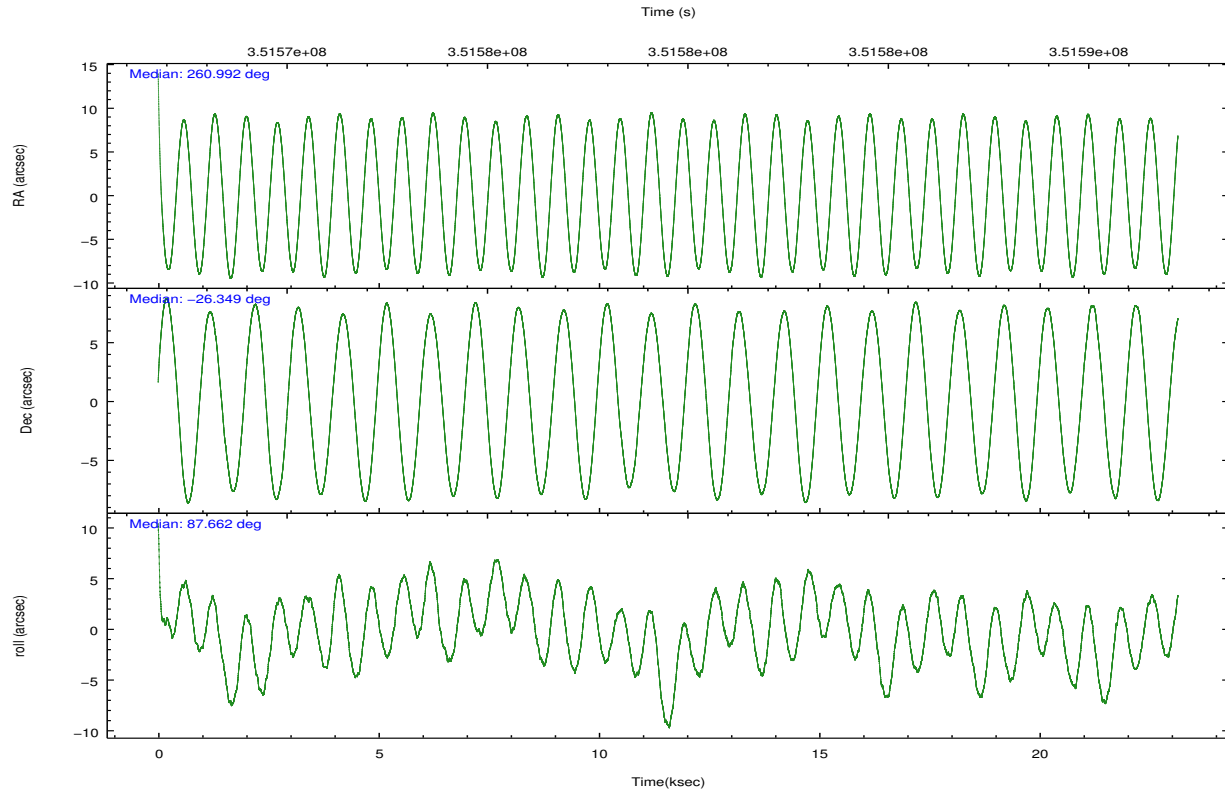
	ccd 2	ccd 3	ccd 5	ccd 6	ccd 7	ccd 8		ccd 2	ccd 3	ccd 5	ccd 6	ccd 7	ccd 8
level 1 events	207161	200658	291807	203104	229700	262073	grade 0 events	8187	7661	21502	8747	10174	19887
rejected events	186172	180665	141599	180696	124301	191093		3%	3%	7%	4%	4%	7%
rejected %	89%	90%	48%	88%	54%	72%	grade 1 events	126	120	663	106	323	230
								0%	0%	0%	0%	0%	0%
							grade 2 events	5089	4383	44346	4913	22042	14714
								2%	2%	15%	2%	9%	5%
							grade 3 events	2068	2136	6126	2282	9971	13529
								0%	1%	2%	1%	4%	5%
							grade 4 events	2119	2031	5992	2247	9579	6290
								1%	1%	2%	1%	4%	2%
							grade 5 events	6980	8084	22046	8128	24017	12082
								3%	4%	7%	4%	10%	4%
							grade 6 events	3678	3903	73376	4365	54421	17019
								1%	1%	25%	2%	23%	6%
							grade 7 events	178914	172340	117756	172316	99173	178322
								86%	85%	40%	84%	43%	68%

2.2 Compared Parameters

Parameter	Planned	Actual	Parameter	Planned	Actual
Instrument	ACIS	ACIS	Obspar format version number	7	7
Detector	ACIS-235678	ACIS-235678	Obspar file type	PREDICTED	ACTUAL
Grating	NONE	NONE	Obspar update status	NONE	UPDATED
Data mode	VFAINT	VFAINT	CCD I0 on	N	N
Observation mode	POINTING	POINTING	CCD I1 on	N	N
[deg] Pointing RA	261.006056	260.9915031157834	CCD I2 on	O2	Y
[deg] Pointing Dec	-26.373422	-26.34937561335338	CCD I3 on	O1	Y
[deg] Pointing Roll	87.514628	87.66479109965513	CCD S0 on	N	N
[mm] SIM focus pos	-0.684267	-0.6828225247311905	CCD S1 on	Y	Y
[mm] SIM defocus	0	0.001444936568705701	CCD S2 on	Y	Y
[mm] SIM translation stage pos	-190.132523	-190.1400660498719	CCD S3 on	Y	Y
[mm] SIM translation stage offset	0	0.00754346686406393	CCD S4 on	Y	Y
[s] Observation start time (MET)	351568063.184000	351566925.7287	CCD S5 on	N	N
Observation start date	2009-02-21T01:46:37	2009-02-21T01:28:45	Number of optional ACIS chips dropped	0	0
[s] Observation end time (MET)	351591063.184000	351592114.07995	On-chip summing requested	N	N
Observation end date	2009-02-21T08:09:57	2009-02-21T08:28:34	Subarray requested	NONE	NONE
Read mode	TIMED	TIMED	Alternating exposures requested	N	N
			[s] Primary exposure time	0.000000	3.2

2.3 Aspect



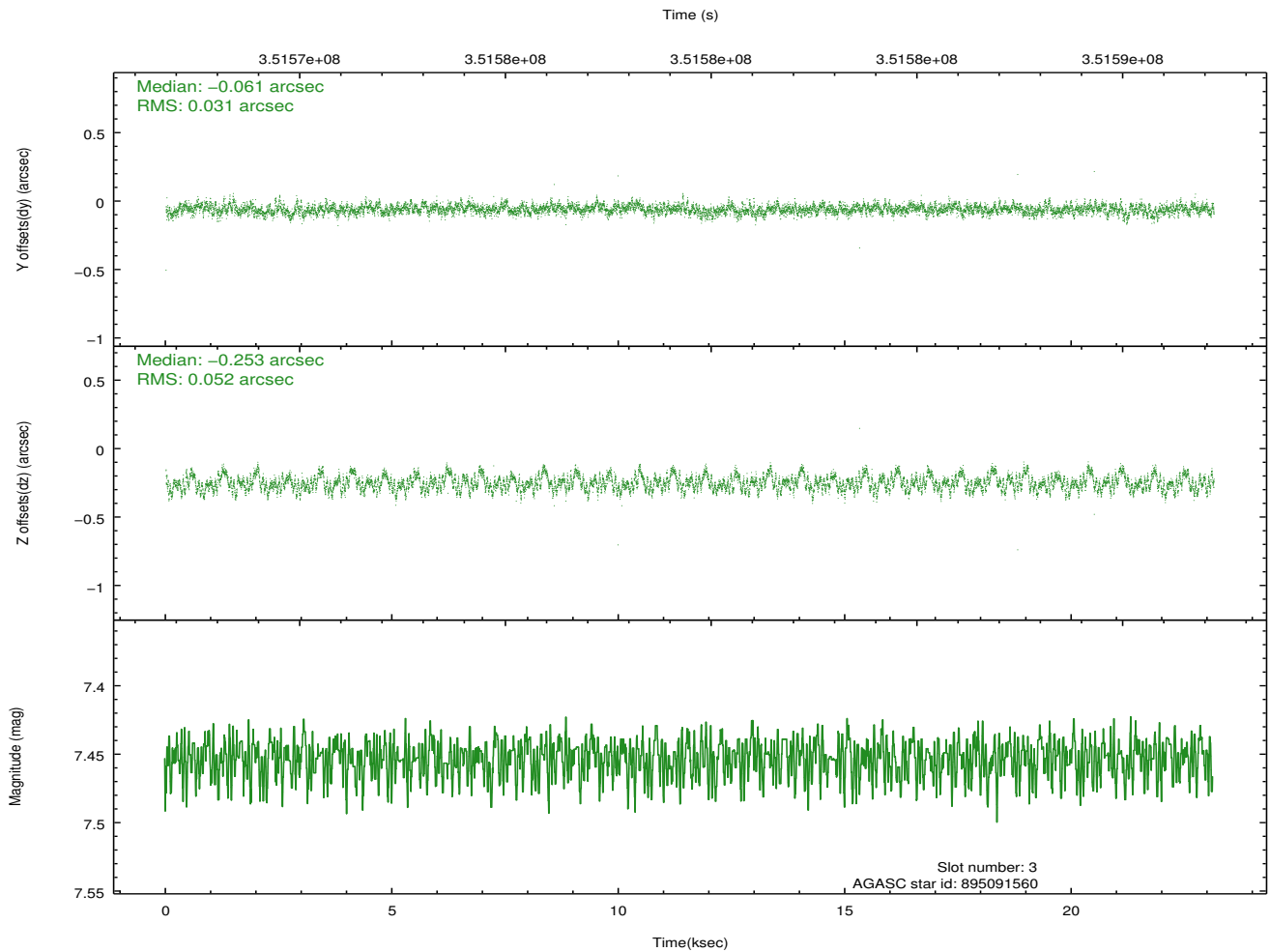
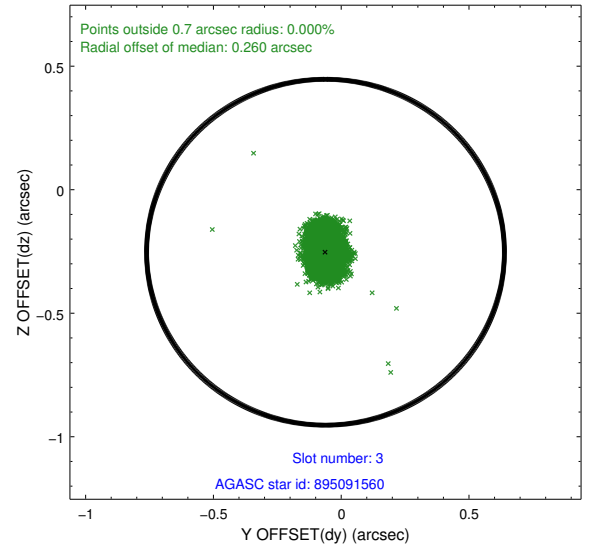
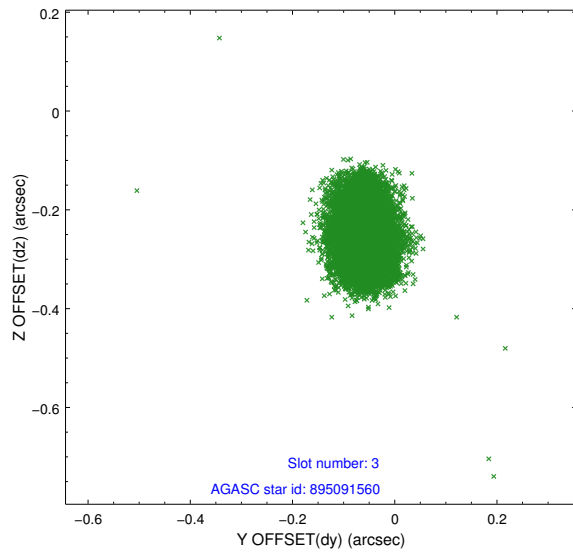


Slot Statistics

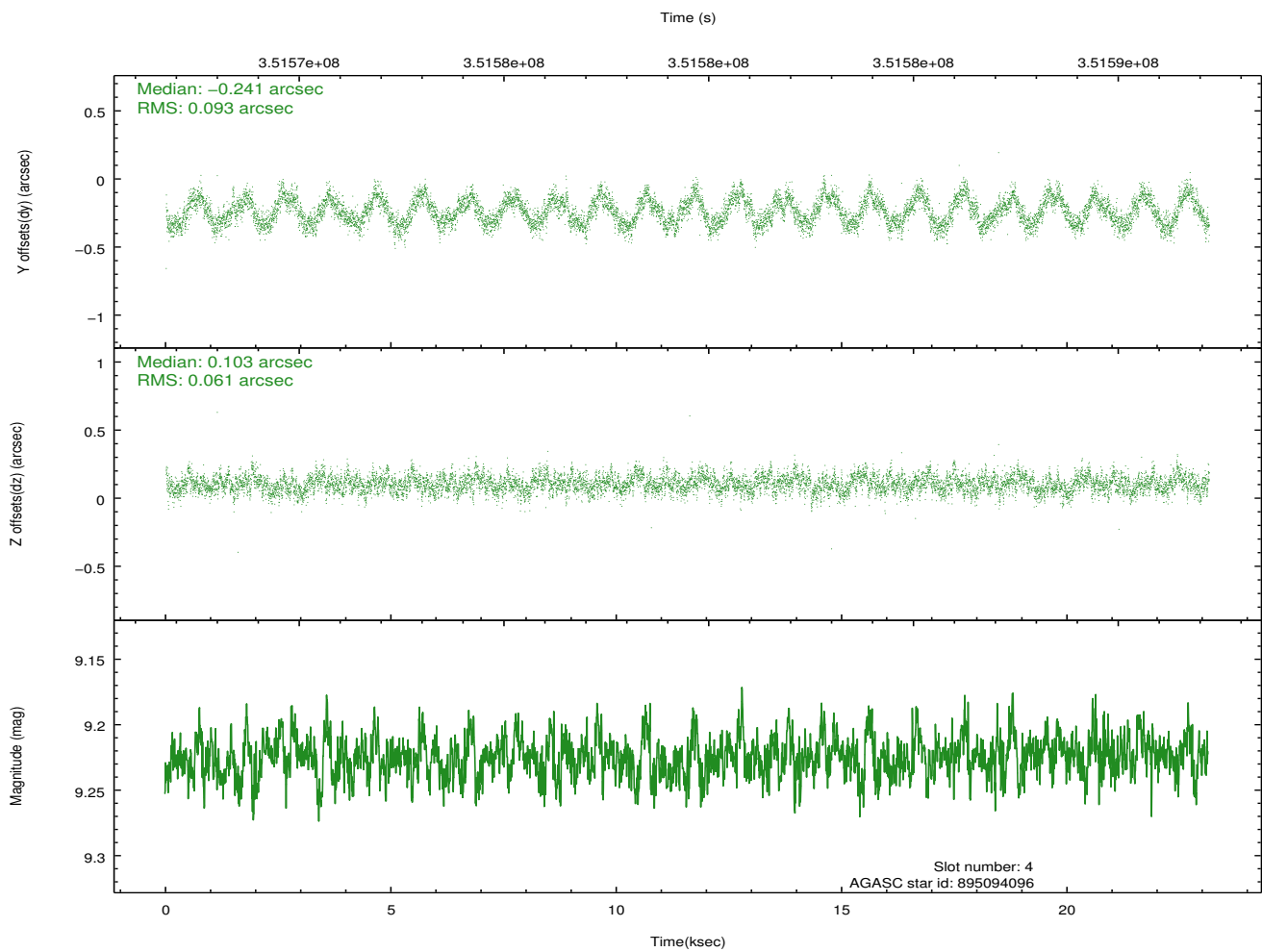
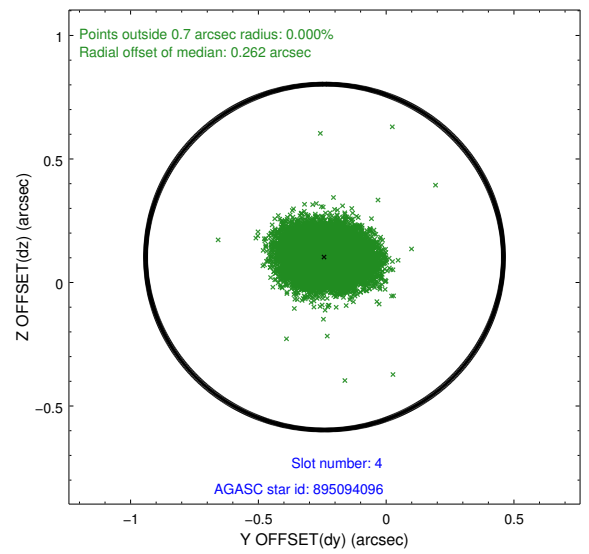
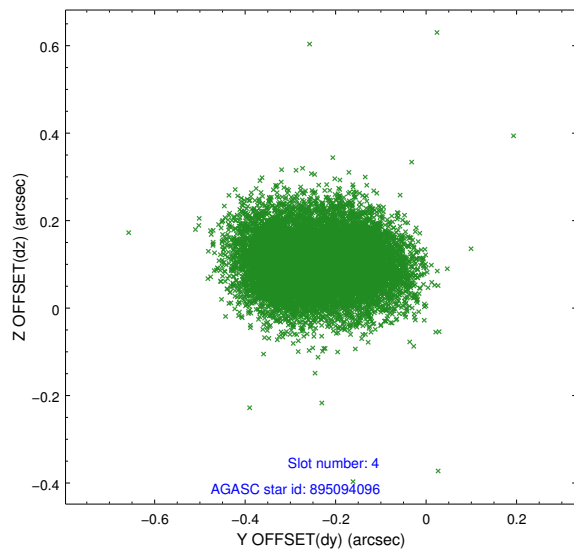
slot	status	id	mag	n_pts	med_dy	med_dz	dr1	dr2	ra	dec	mean_y	mean_z
0	FID	ACIS-S-2	6.90	5644	-0.047	-0.011	0.008	0.013	0.000000	0.000000	-766.56	-1737.16
1	FID	ACIS-S-4	6.99	5645	0.167	0.026	0.009	0.015	0.000000	0.000000	2146.85	171.24
2	FID	ACIS-S-5	7.02	5645	-0.152	-0.006	0.012	0.018	0.000000	0.000000	-1819.34	165.00
3	GUIDE	895091560	7.45	11290	-0.061	-0.253	0.064	0.105	260.592893	-26.215556	507.27	1357.84
4	GUIDE	895094096	9.22	11261	-0.241	0.103	0.121	0.185	261.324148	-26.146167	860.71	-991.20
5	GUIDE	895094400	8.84	11277	-0.179	-0.102	0.069	0.111	260.718938	-25.748716	2205.48	1027.67
6	GUIDE	895615656	9.01	11274	0.544	0.071	0.113	0.179	261.145081	-26.924733	-1962.81	-531.74
7	GUIDE	895091024	9.10	11206	-0.056	0.183	0.087	0.137	261.373465	-26.149889	853.79	-1151.09

2.4 Star Slots

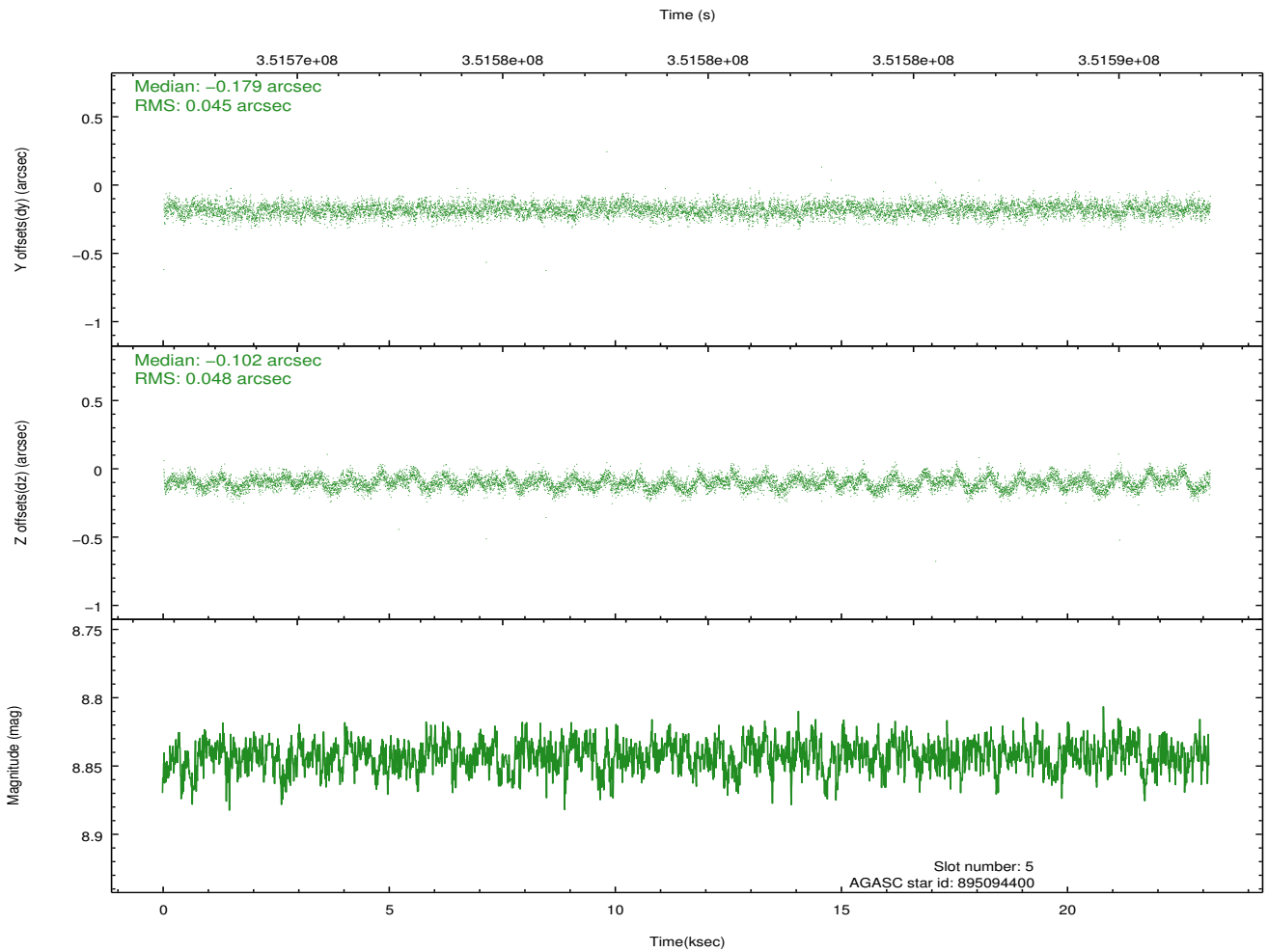
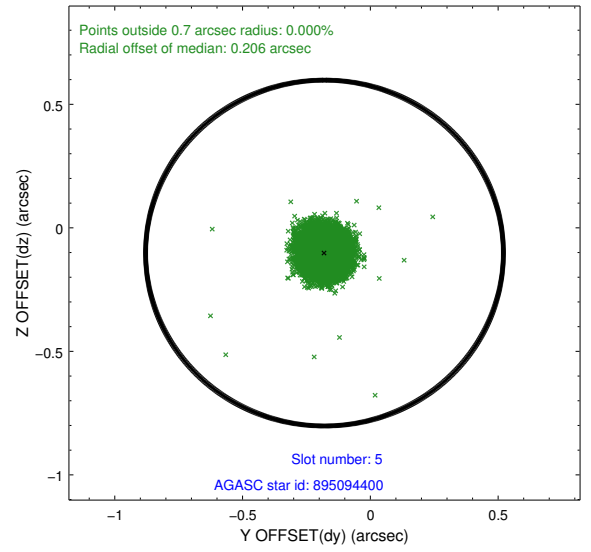
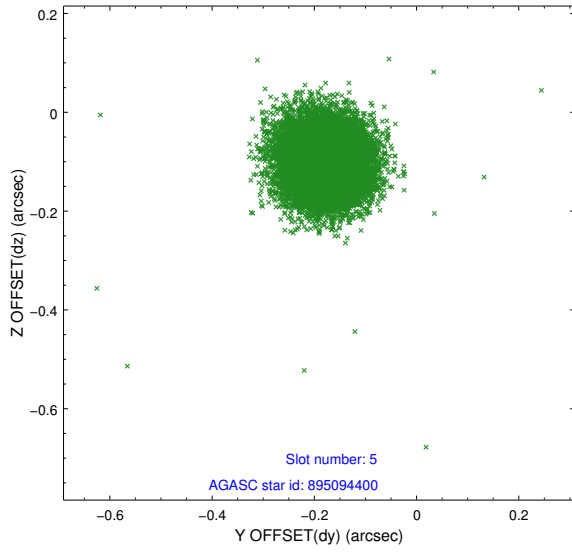
2.4.1 Slot 3



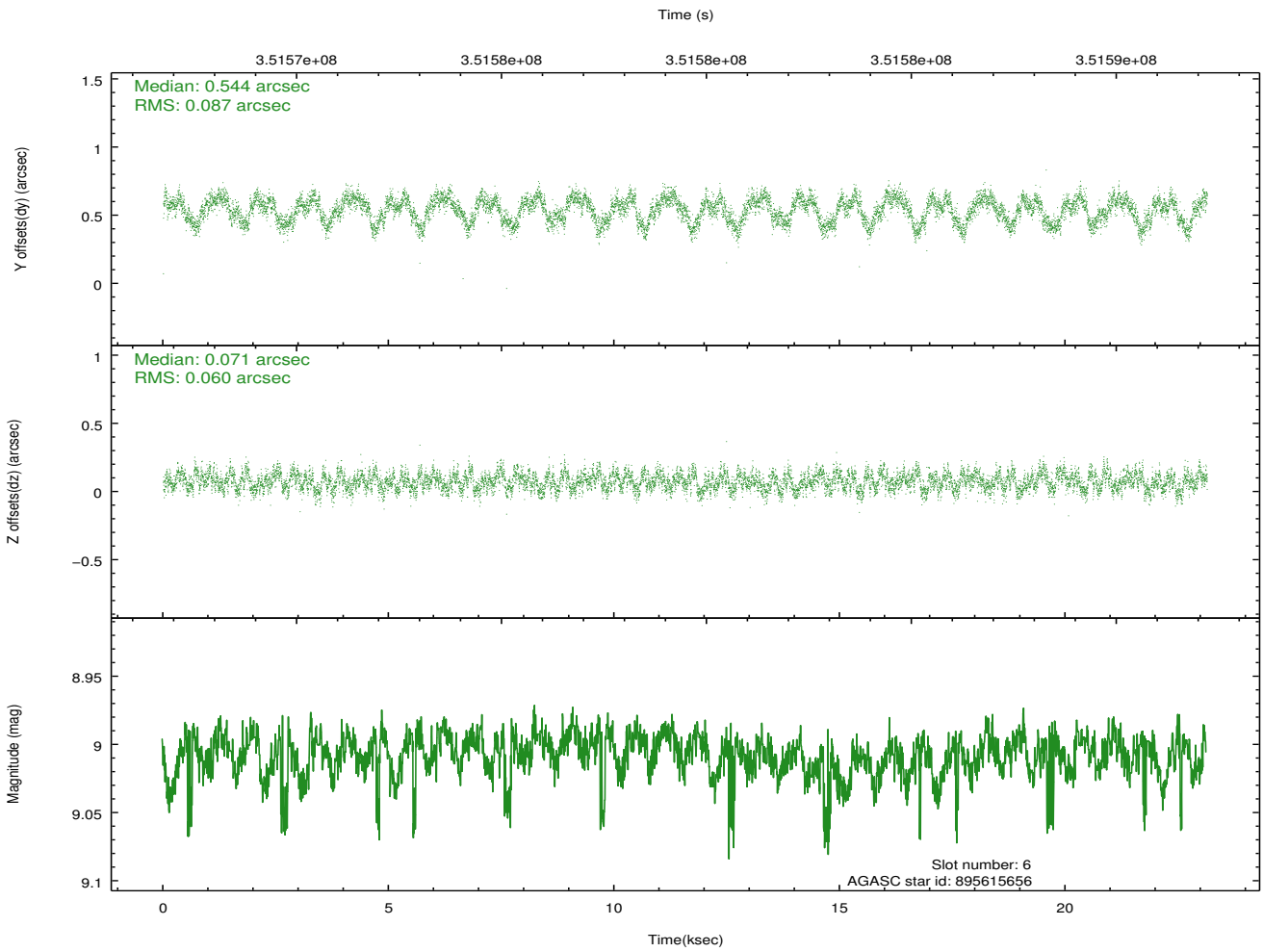
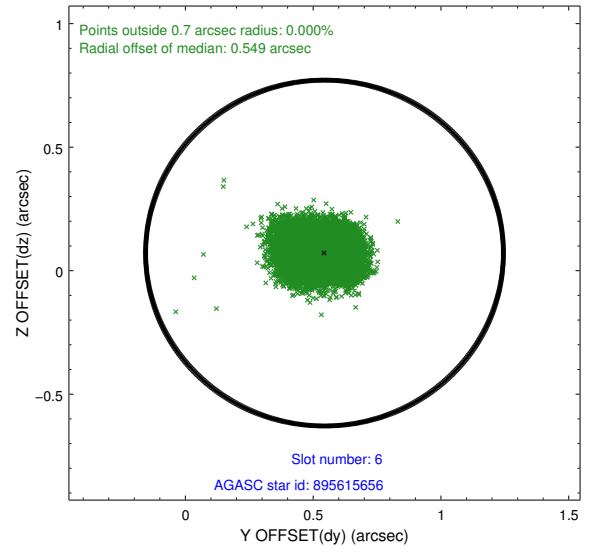
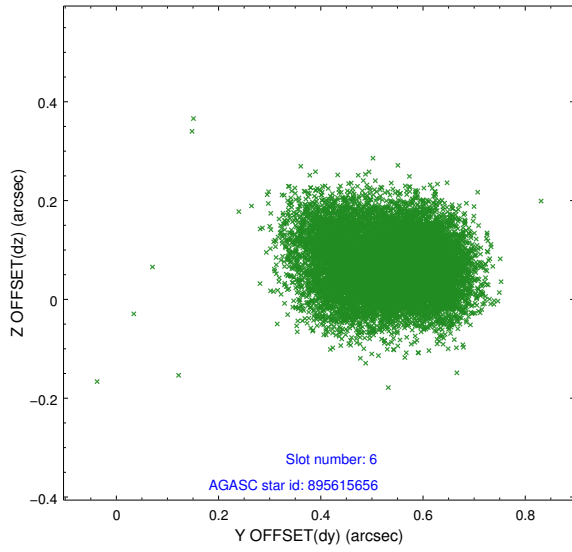
2.4.2 Slot 4



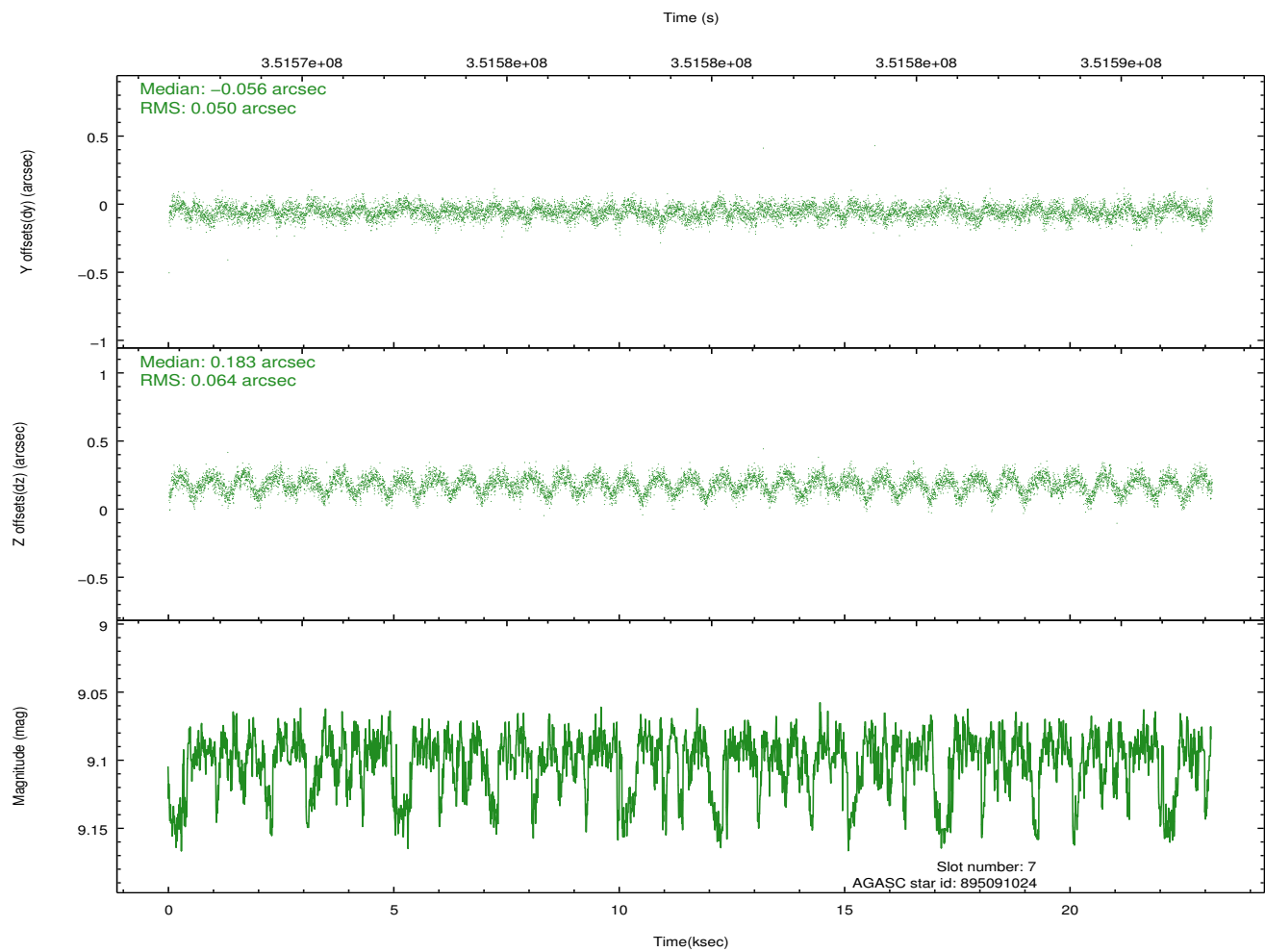
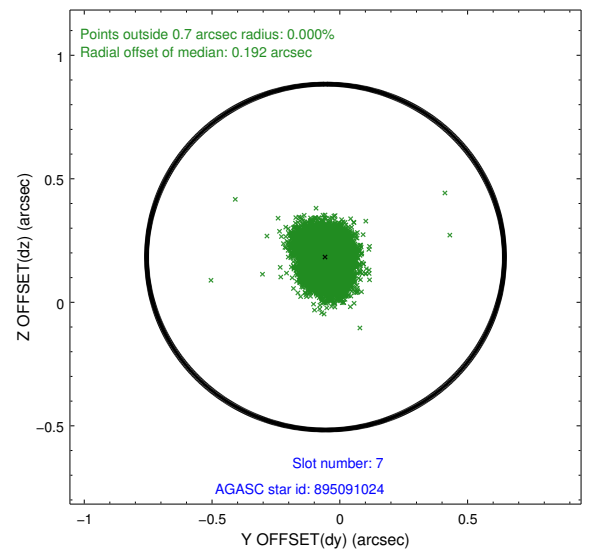
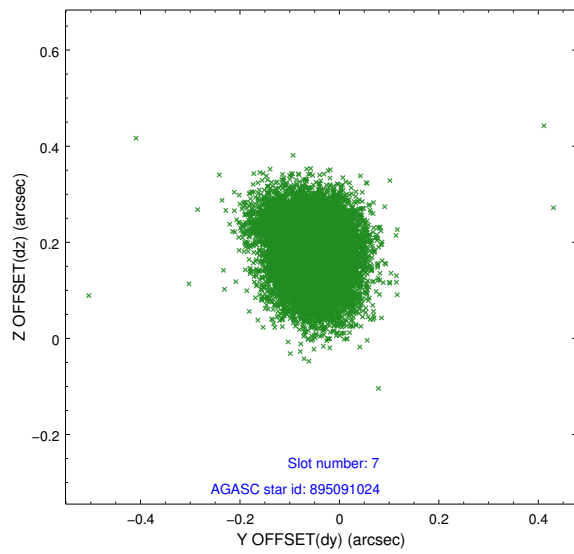
2.4.3 Slot 5



2.4.4 Slot 6

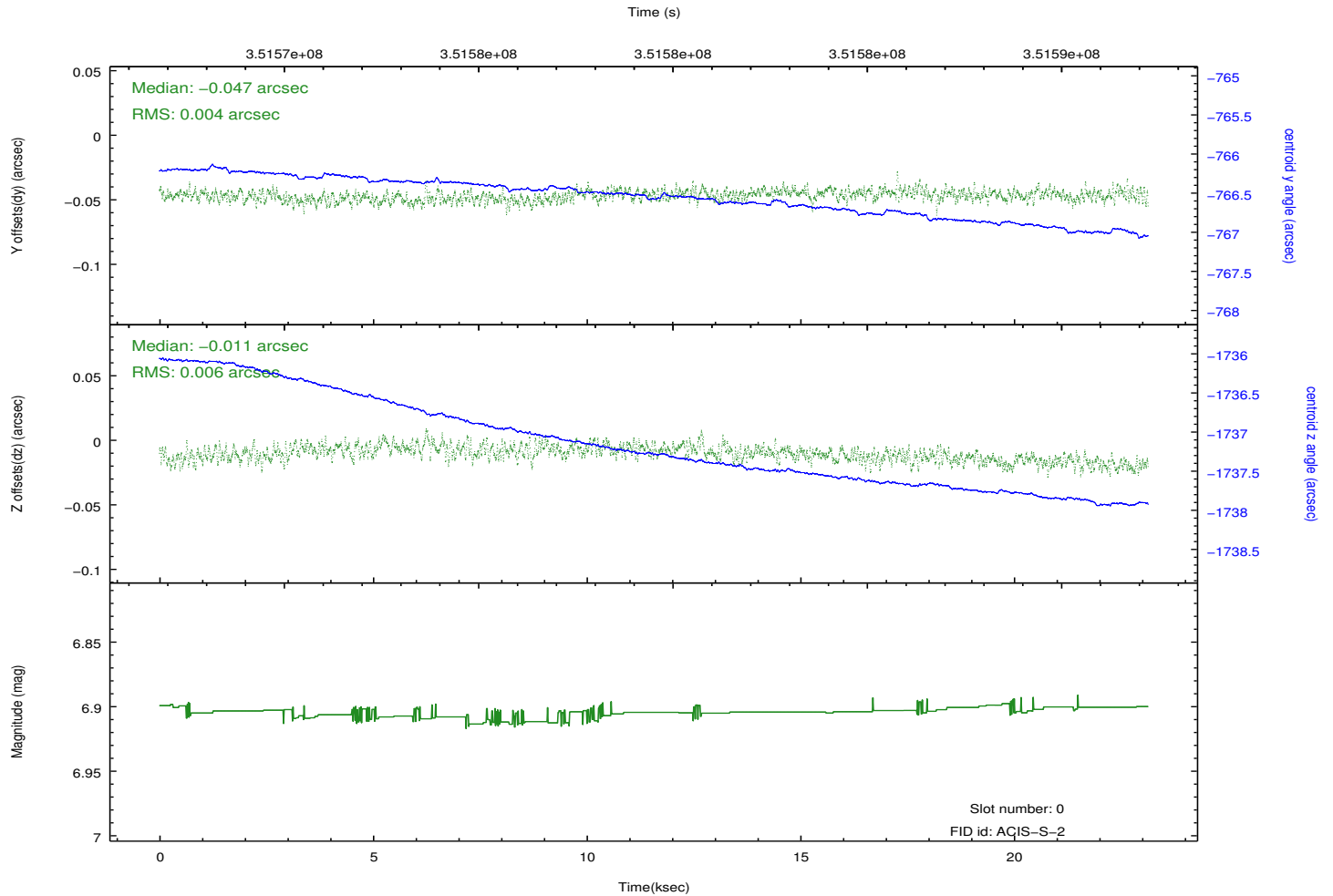
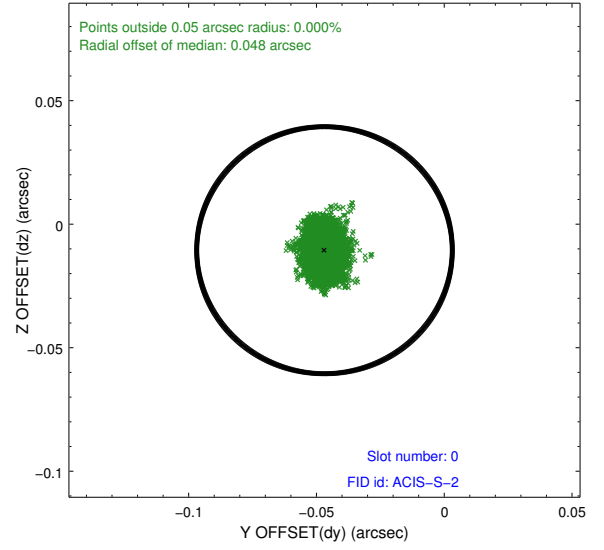
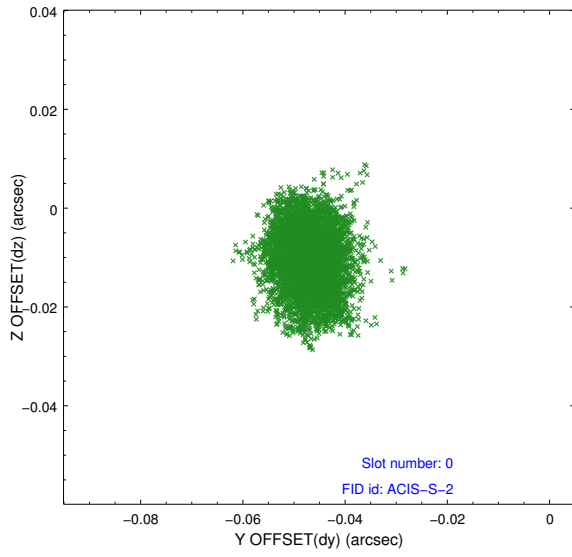


2.4.5 Slot 7

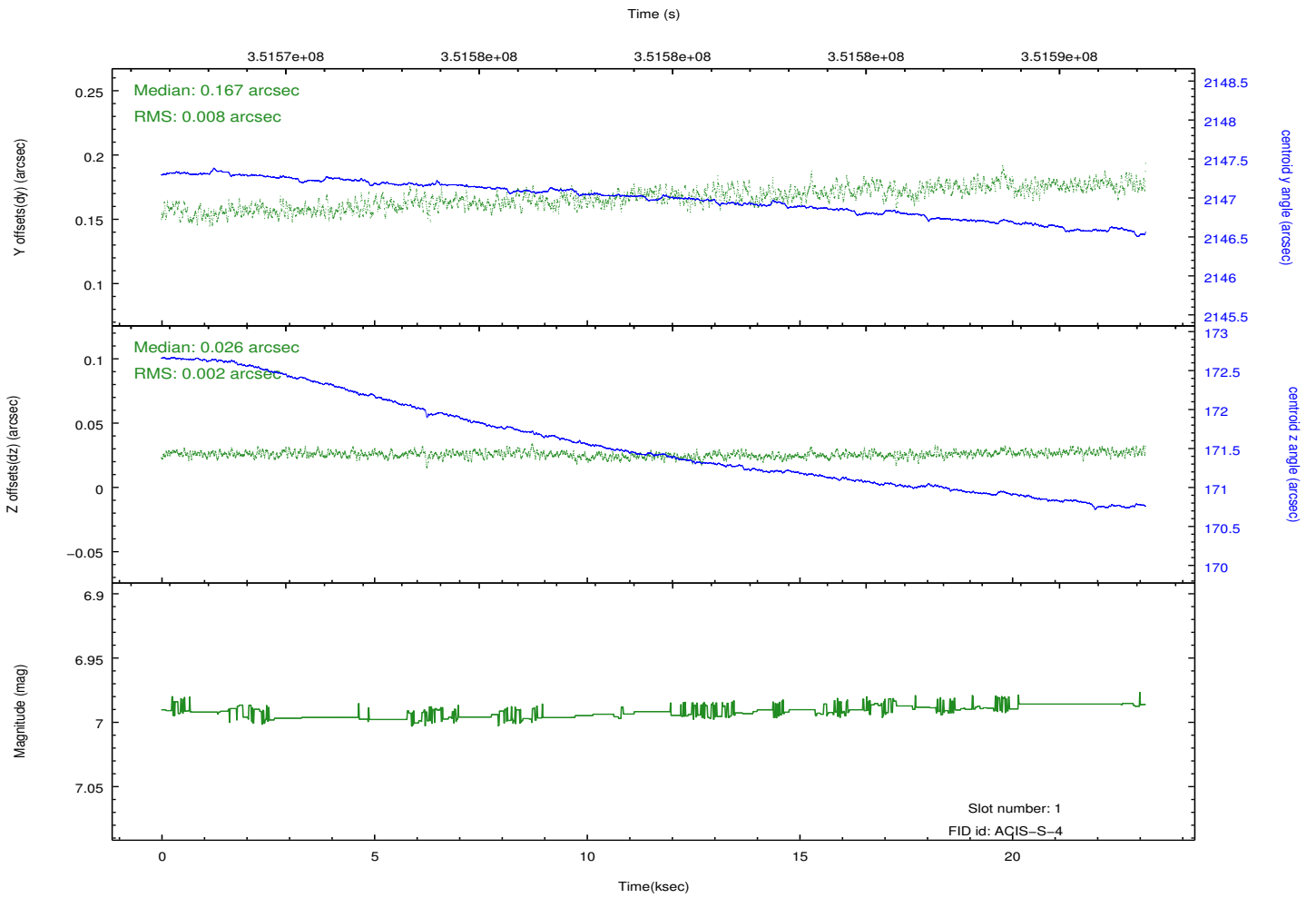
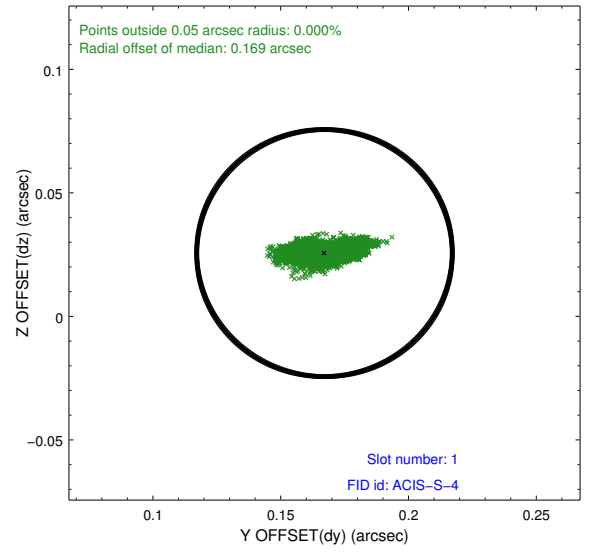
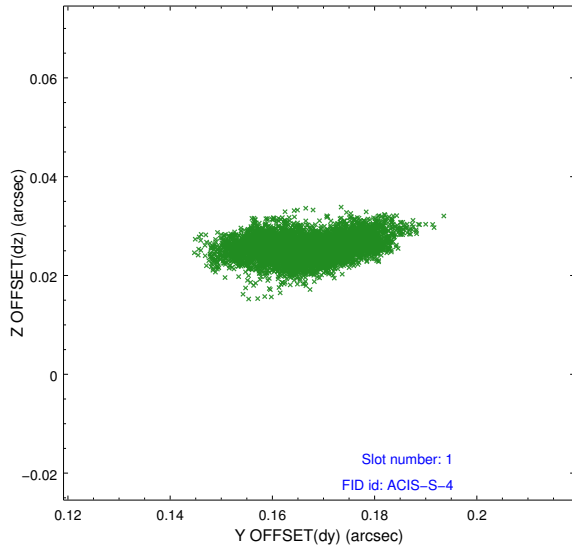


2.5 FID Slots

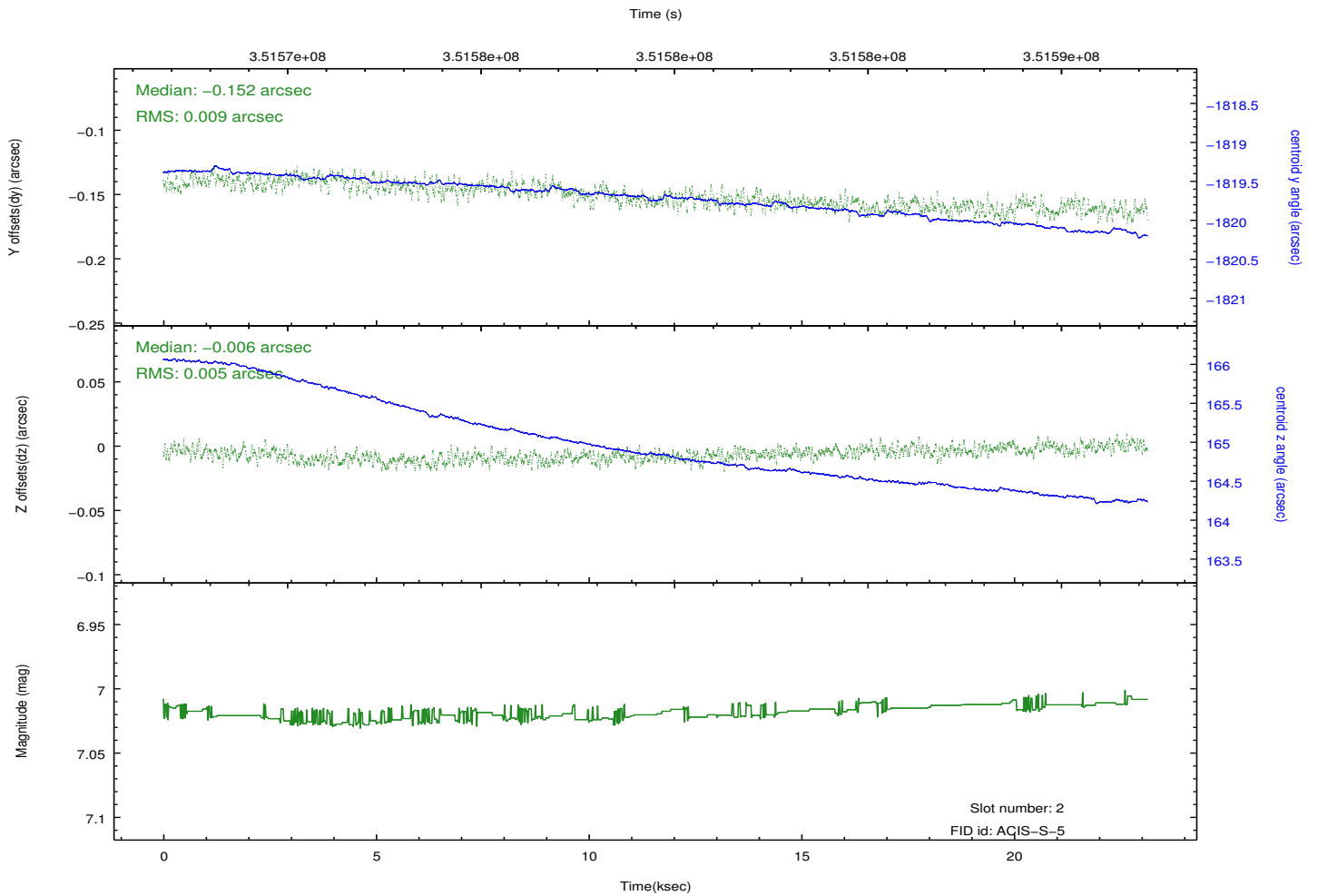
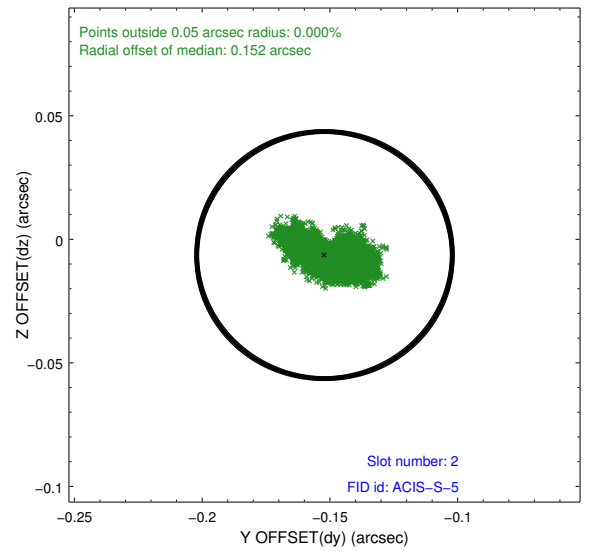
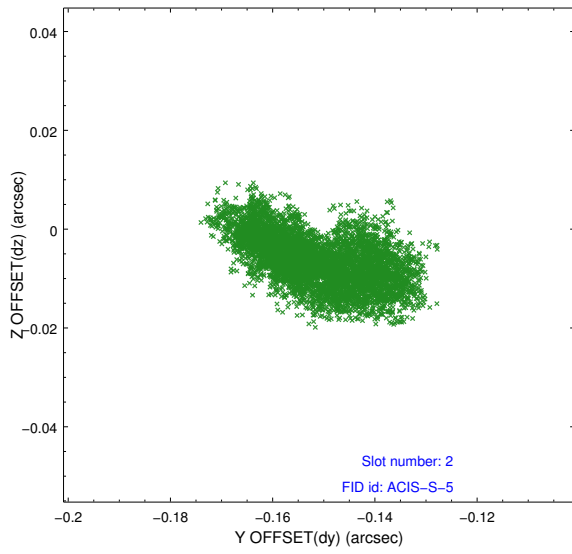
2.5.1 Slot 0



2.5.2 Slot 1



2.5.3 Slot 2



A Summary

A.1 Status

V&V Scientist	Jen Lauer
V&V Date (YYYY-MM-DD)	2012.06.06
V&V Edition	1
V&V Disposition and Status	OK
V&V Charge Time	23.1391999

A.2 Comments