

V&V Reference Report

L2 ASCDS Version : 8.4.5

Observation 10089 - L2 Version 2
Chandra X-Ray Center

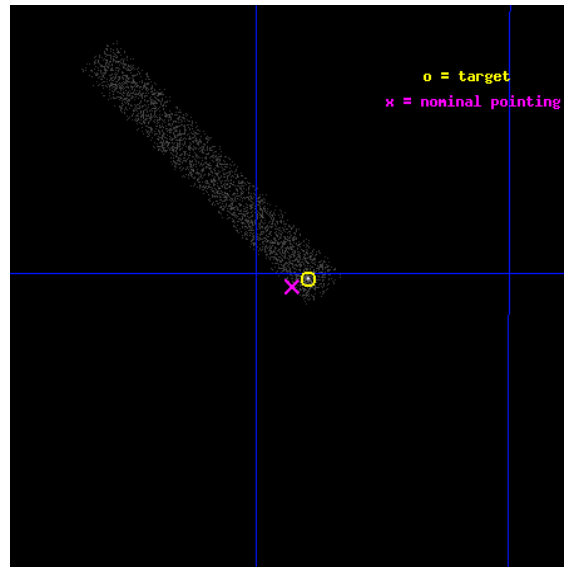
L2 Processing Date : Jun 7 2012

Contents

1	Front	2
2	OBI	3
2.1	OBI	3
2.1.1	Images	3
2.1.2	Bias	3
2.1.3	Parameters	4
2.1.4	Events	4
2.2	Compared Parameters	5
2.3	Aspect	6
2.4	Star Slots	9
2.4.1	Slot 3	9
2.4.2	Slot 4	10
2.4.3	Slot 5	11
2.4.4	Slot 6	12
2.4.5	Slot 7	13
2.5	FID Slots	14
2.5.1	Slot 0	14
2.5.2	Slot 1	15
2.5.3	Slot 2	16
A	Summary	17
A.1	Status	17
A.2	Comments	17

1 Front

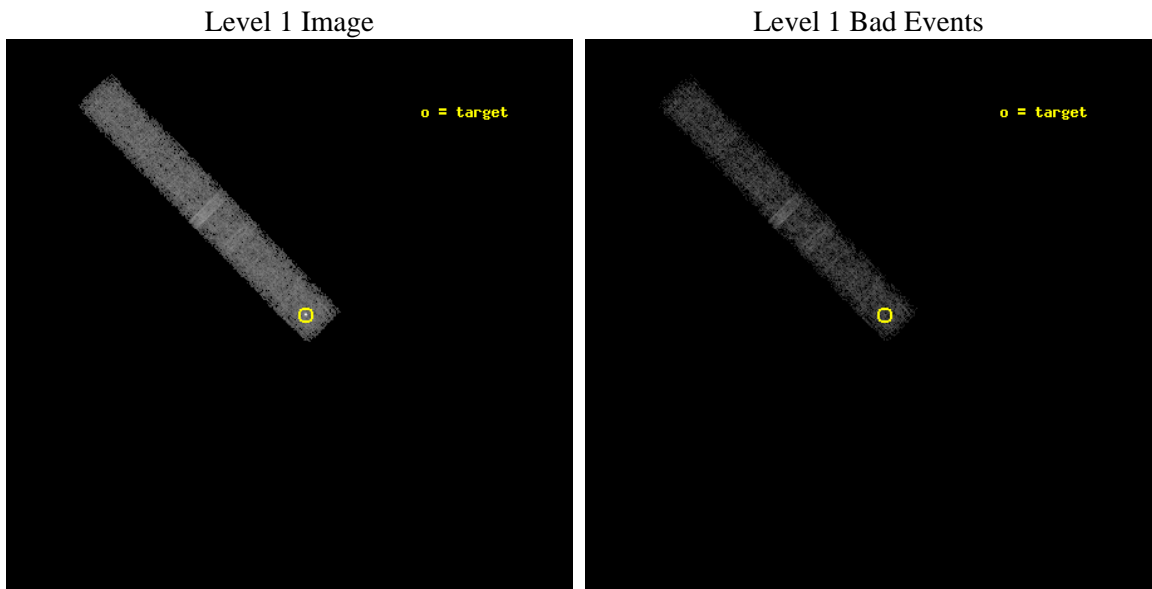
seq_num	501021	Sequence number
obs_id	10089	Observation id
title	Imaging the binary plerion	Proposal title
observer	Dr. George Pavlov	Principal investigator
object	PSR B1259-63	Source name
dtcycle	0	
cycle	P	events from which exps? Prim/Second/Both
ra_targ	195.698333	Observer's specified target RA [deg]
dec_targ	-63.83575	Observer's specified target Dec [deg]
ra_nom	195.71464789159	Nominal RA [deg]
dec_nom	-63.839406723321	Nominal Dec [deg]
roll_nom	315.74143241554	Nominal Roll [deg]
revision	2	Processing version of data
ontime	28279.875234187	Sum of GTIs [s]
livetime	25648.354103199	Livetime [s]
ontime3	28279.875234187	Sum of GTIs [s]
l2events	5712	Number of level 2 events



2 OBI

2.1 OBI

2.1.1 Images



2.1.2 Bias

Chip 3



2.1.3 Parameters

obi_num	0	Obi number	sched_exp_time	28100.000000	[s] Scheduled observation exposure time
ascdsver	8.4.5	Processing system revision	ontime	28279.875234187	Sum of GTIs [s]
caldbver	4.4.10	 	ontime3	28279.875234187	Sum of GTIs [s]
date	2012-06-07T03:06:05	Date and time of file creation	l1events	48825	Number of level 1 events
revision	2	Processing version of data			

2.1.4 Events

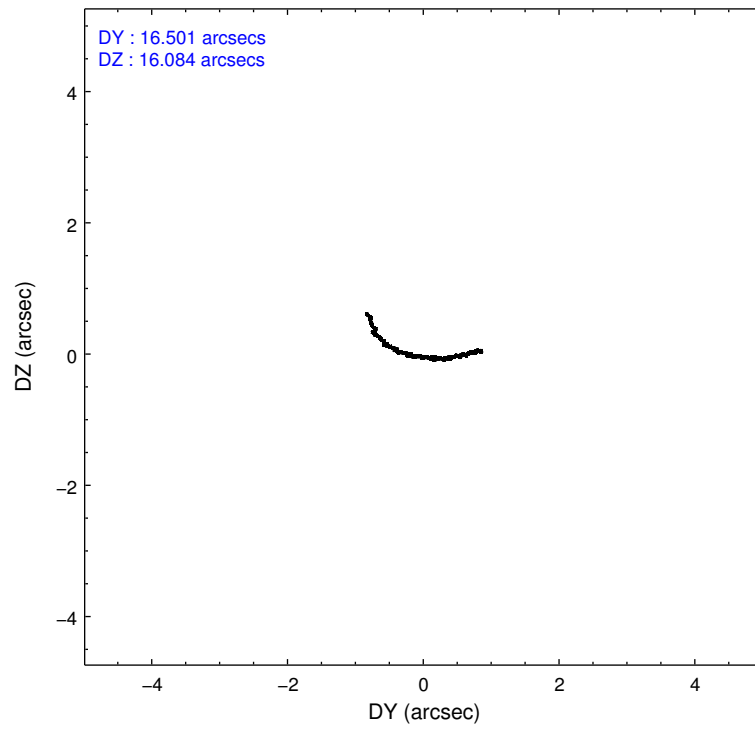
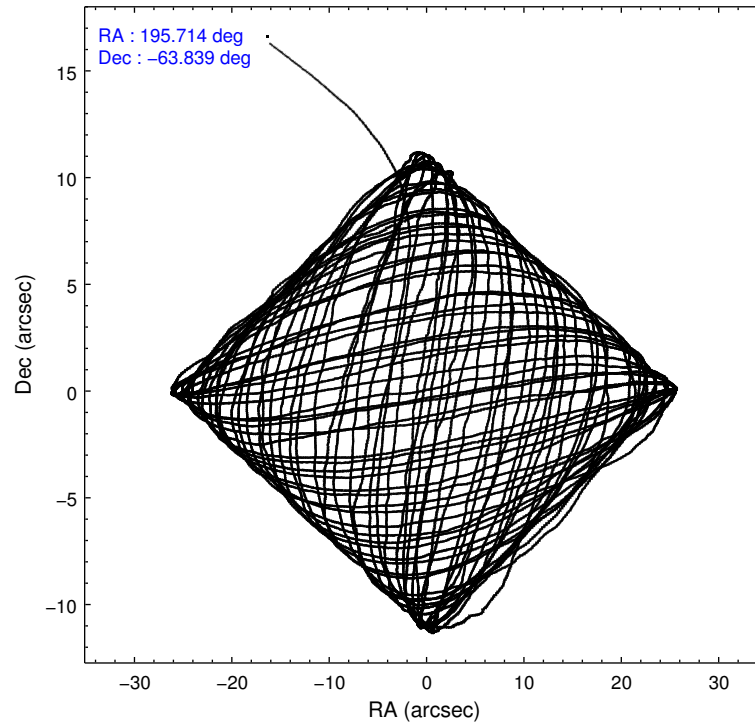
	ccd 3
level 1 events	48825
rejected events	41929
rejected %	85%

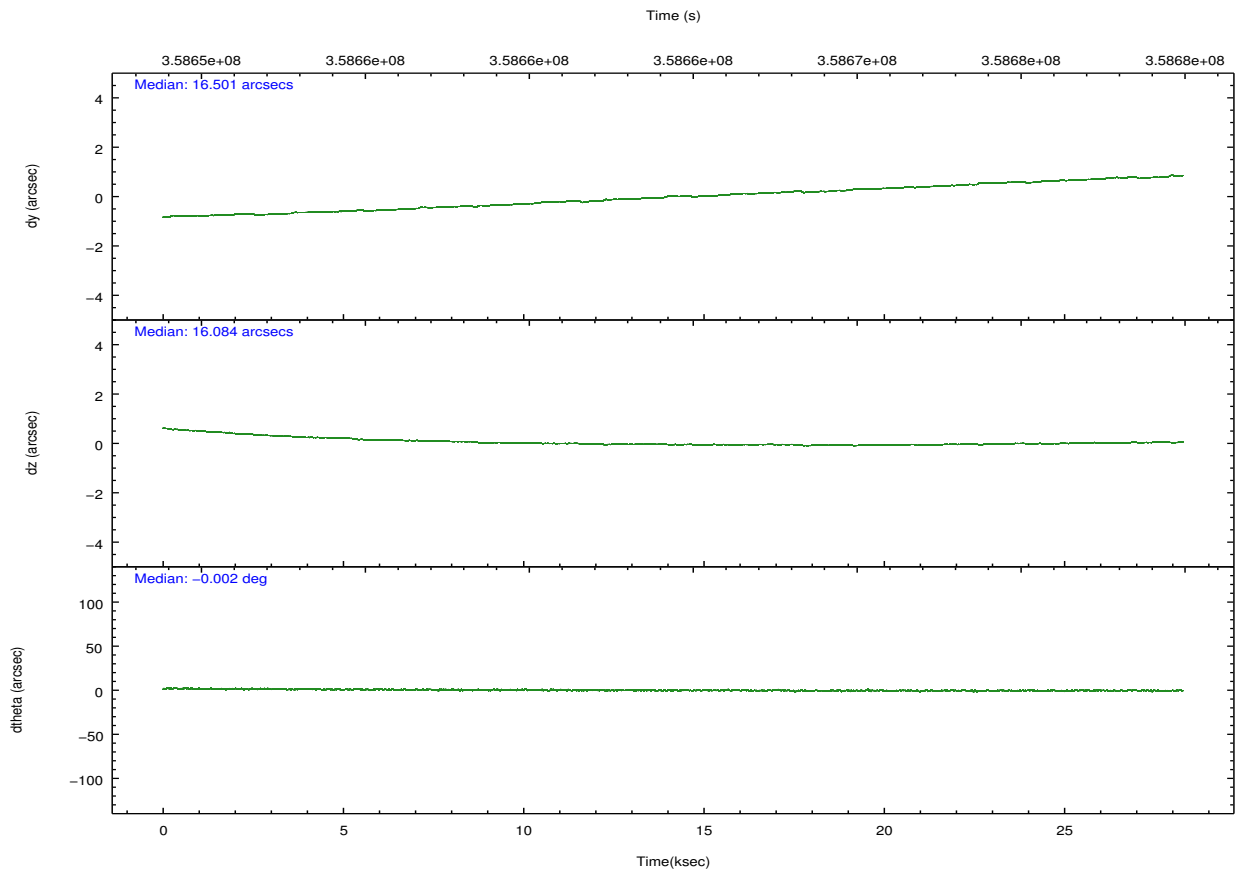
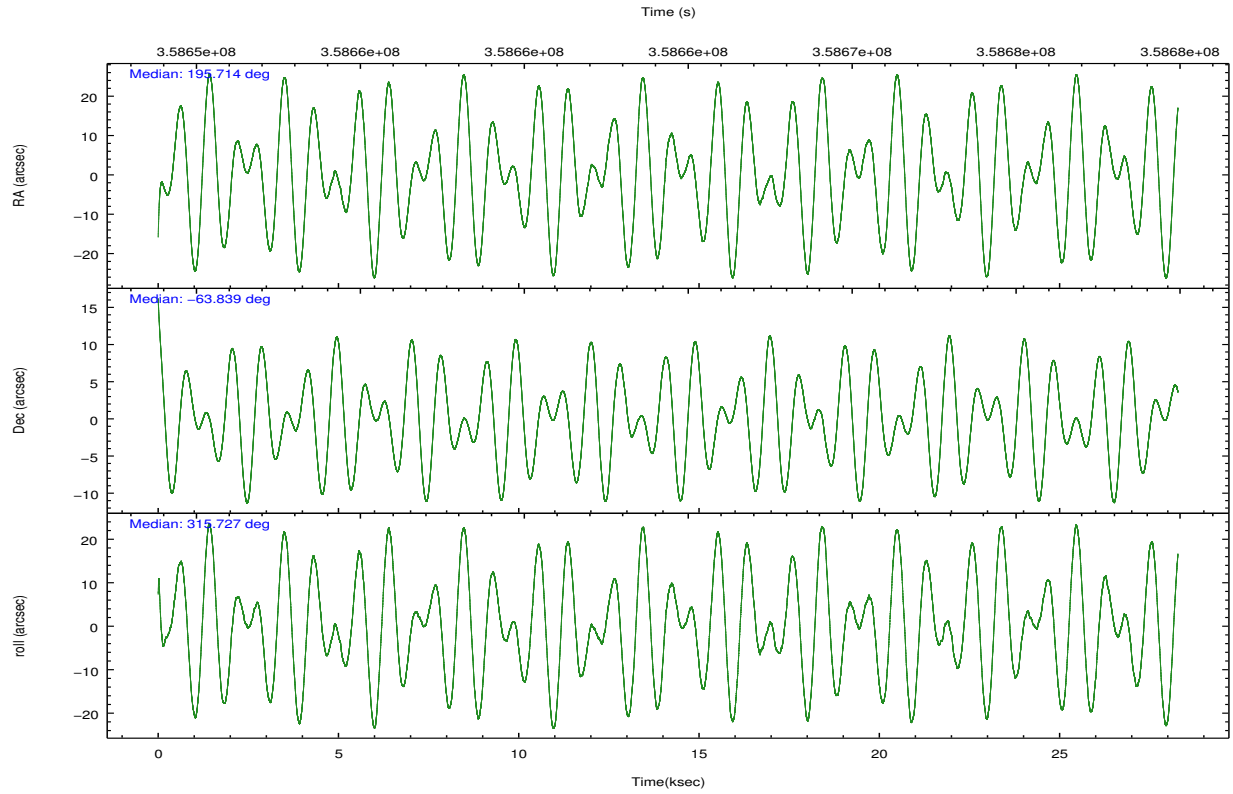
	ccd 3
grade 0 events	3128
	6%
grade 1 events	27
	0%
grade 2 events	878
	1%
grade 3 events	1184
	2%
grade 4 events	1121
	2%
grade 5 events	1166
	2%
grade 6 events	764
	1%
grade 7 events	40557
	83%

2.2 Compared Parameters

Parameter	Planned	Actual	Parameter	Planned	Actual
Instrument	ACIS	ACIS	Obspar format version number	7	7
Detector	ACIS-3	ACIS-3	Obspar file type	PREDICTED	ACTUAL
Grating	NONE	NONE	Obspar update status	NONE	UPDATED
Data mode	VFAINT	VFAINT	Number of optional ACIS chips dropped	0	0
Observation mode	POINTING	POINTING	On-chip summing requested	N	N
[deg] Pointing RA	195.654176	195.7146478915854	Subarray requested	CUSTOM	CUSTOM
[deg] Pointing Dec	-63.832735	-63.83940672332054	Subarray start row	899	899
[deg] Pointing Roll	315.478464	315.7414324155442	Subarray row count	124	124
[mm] SIM focus pos	-0.782348	-0.7809083437167272	Alternating exposures requested	N	N
[mm] SIM defocus	0	0.001439871863259334	[s] Primary exposure time	0.000000	0.4
[mm] SIM translation stage pos	-233.592463	-233.5874344608287			
[mm] SIM translation stage offset	0	-0.005018542100998502			
[s] Observation start time (MET)	358650422.184000	358649144.10596			
Observation start date	2009-05-14T01:05:56	2009-05-14T00:45:44			
[s] Observation end time (MET)	358678522.184000	358679483.08247			
Observation end date	2009-05-14T08:54:16	2009-05-14T09:11:23			
Read mode	TIMED	TIMED			

2.3 Aspect



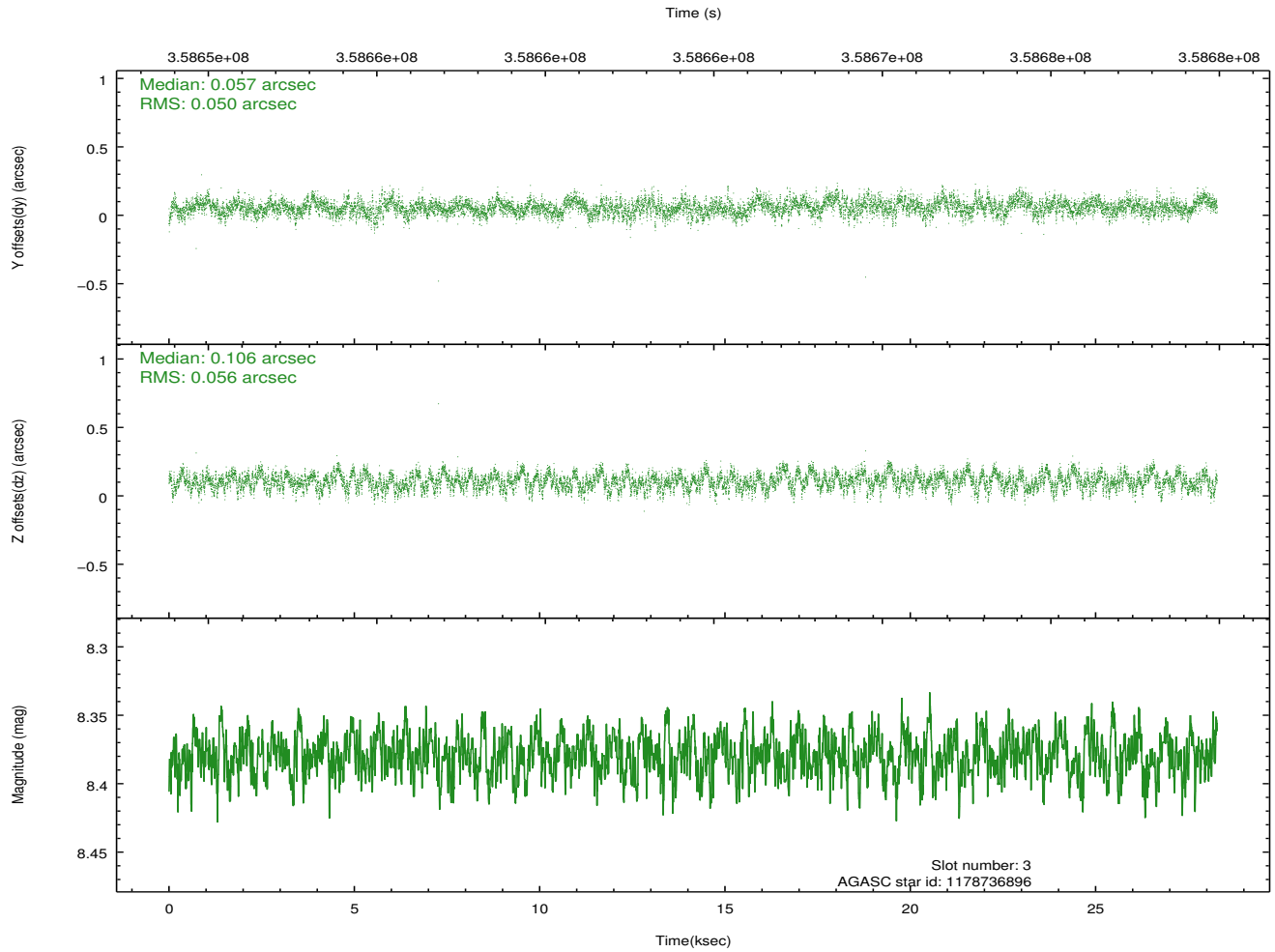
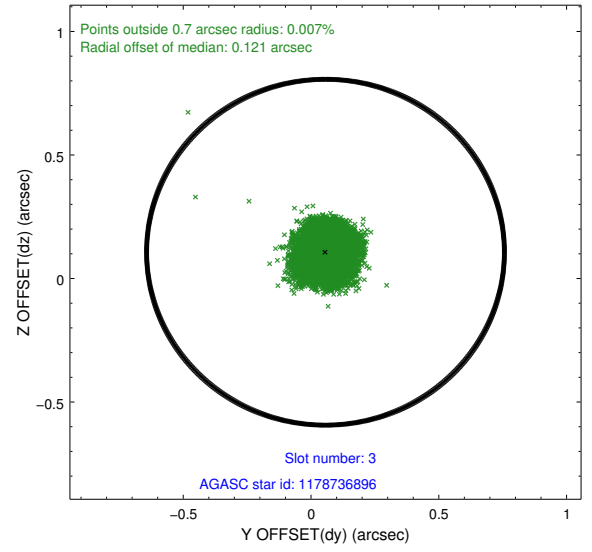
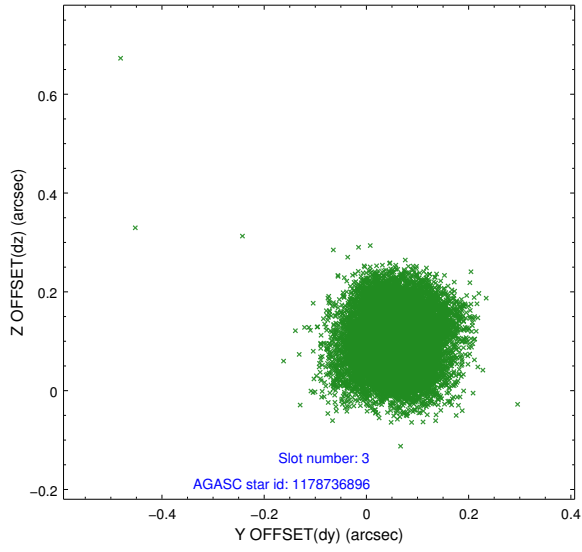


Slot Statistics

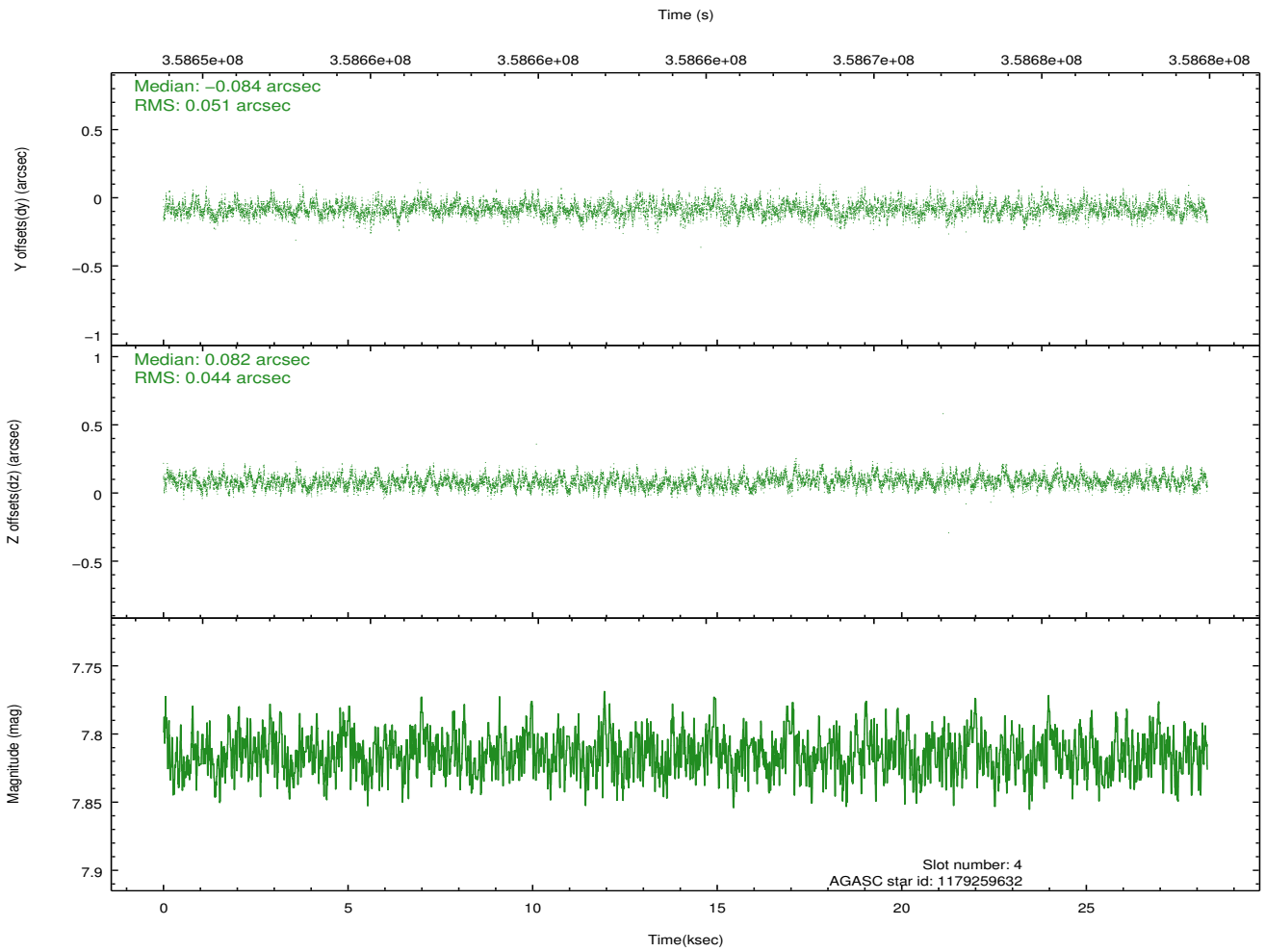
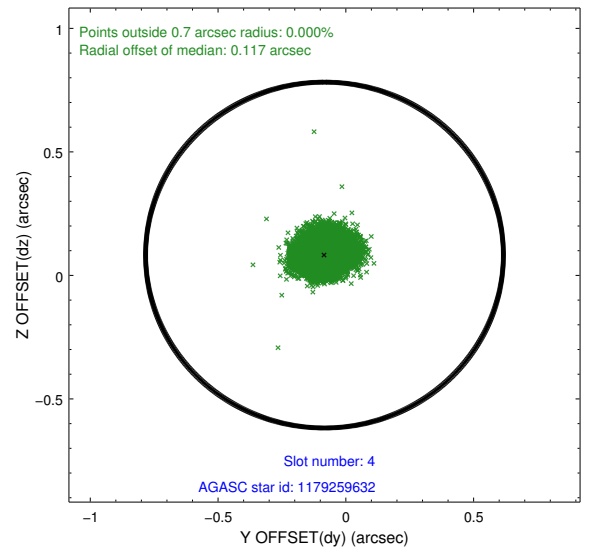
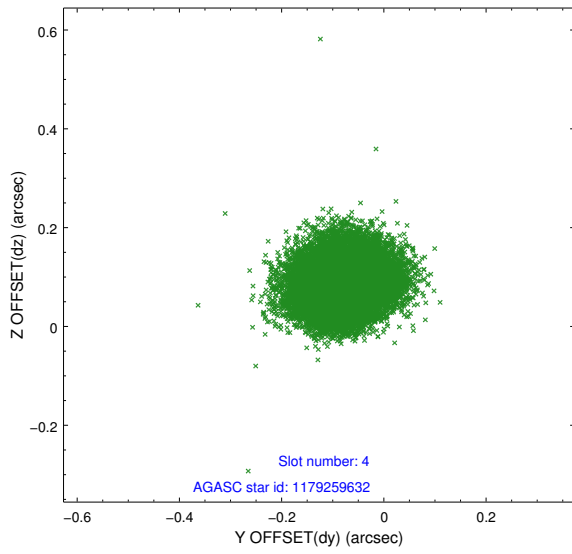
slot	status	id	mag	n_pts	med_dy	med_dz	dr1	dr2	ra	dec	mean_y	mean_z
0	FID	ACIS-I-1	7.04	6897	0.042	-0.021	0.010	0.020	0.000000	0.000000	922.97	-839.80
1	FID	ACIS-I-5	7.03	6896	-0.199	0.046	0.012	0.027	0.000000	0.000000	-1825.32	1057.73
2	FID	ACIS-I-6	7.04	6897	0.069	0.045	0.011	0.019	0.000000	0.000000	388.47	1702.31
3	GUIDE	1178736896	8.38	13791	0.057	0.106	0.080	0.128	194.755483	-63.640622	-1501.21	-521.19
4	GUIDE	1179259632	7.81	13795	-0.084	0.082	0.072	0.115	194.903869	-64.371399	530.37	-2209.09
5	GUIDE	1179266488	7.14	13795	0.027	0.096	0.075	0.123	196.258505	-64.441584	2210.01	-907.37
6	GUIDE	1178734856	8.22	13792	-0.058	-0.182	0.065	0.111	195.759625	-63.178913	-1527.93	1797.99
7	GUIDE	1179392056	9.02	13786	0.053	-0.105	0.082	0.136	197.743102	-63.803603	2331.16	2364.42

2.4 Star Slots

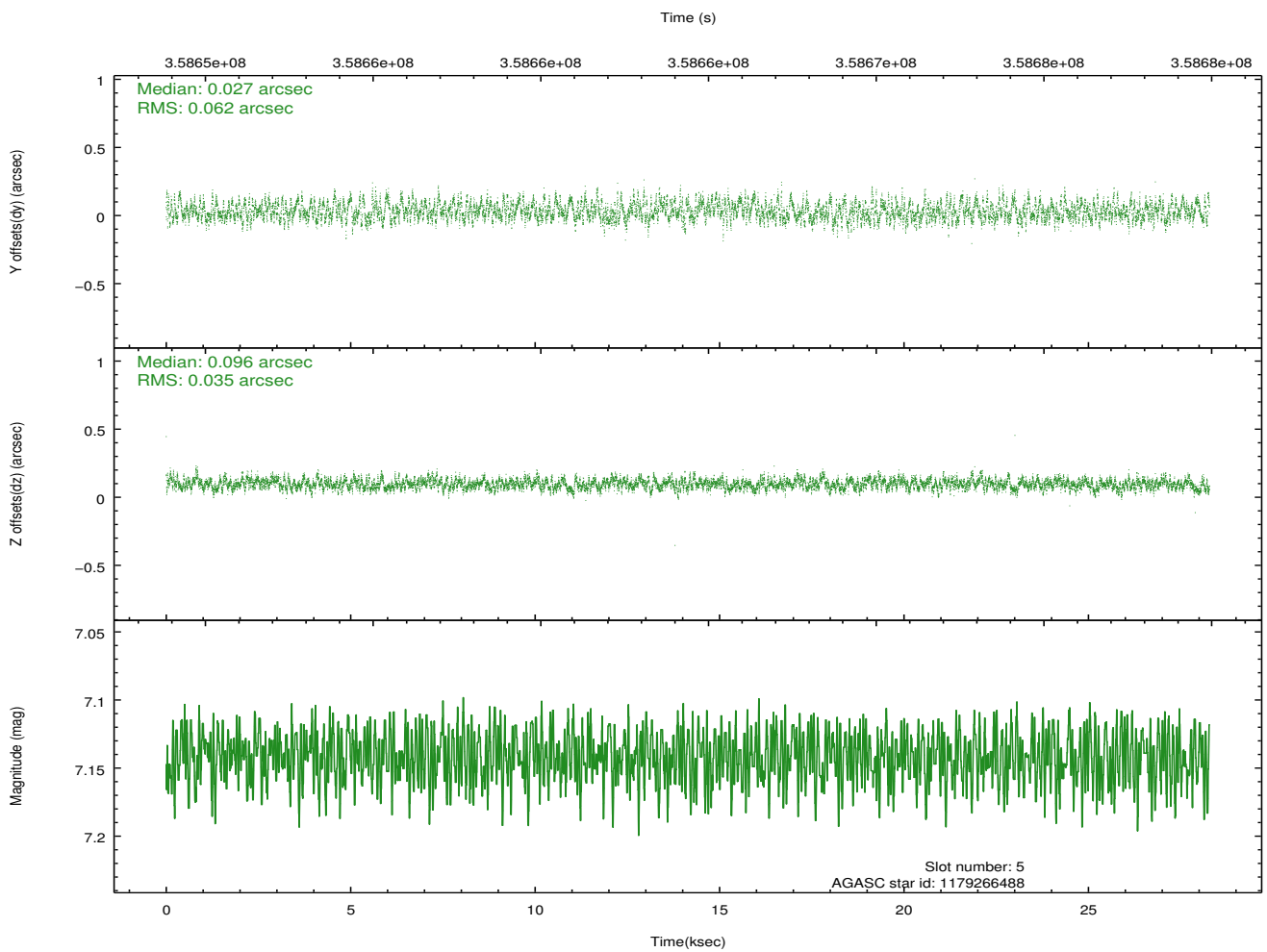
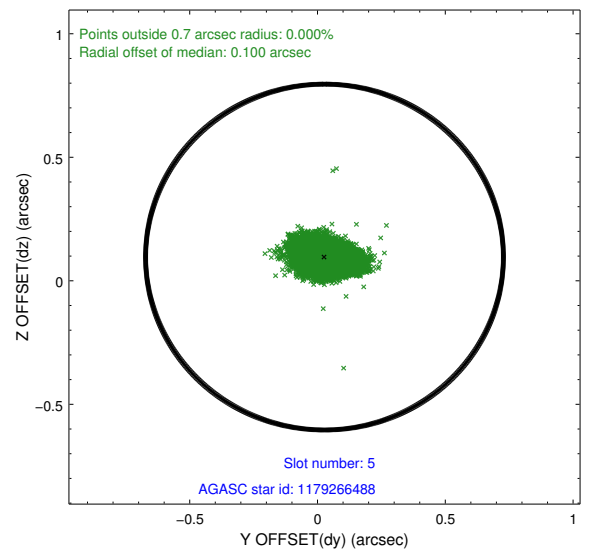
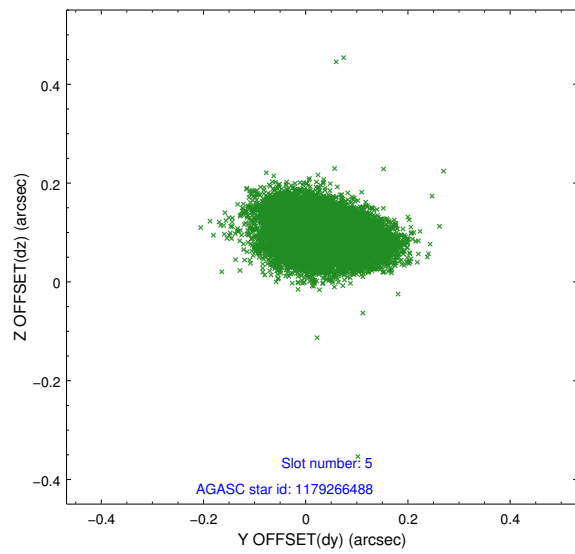
2.4.1 Slot 3



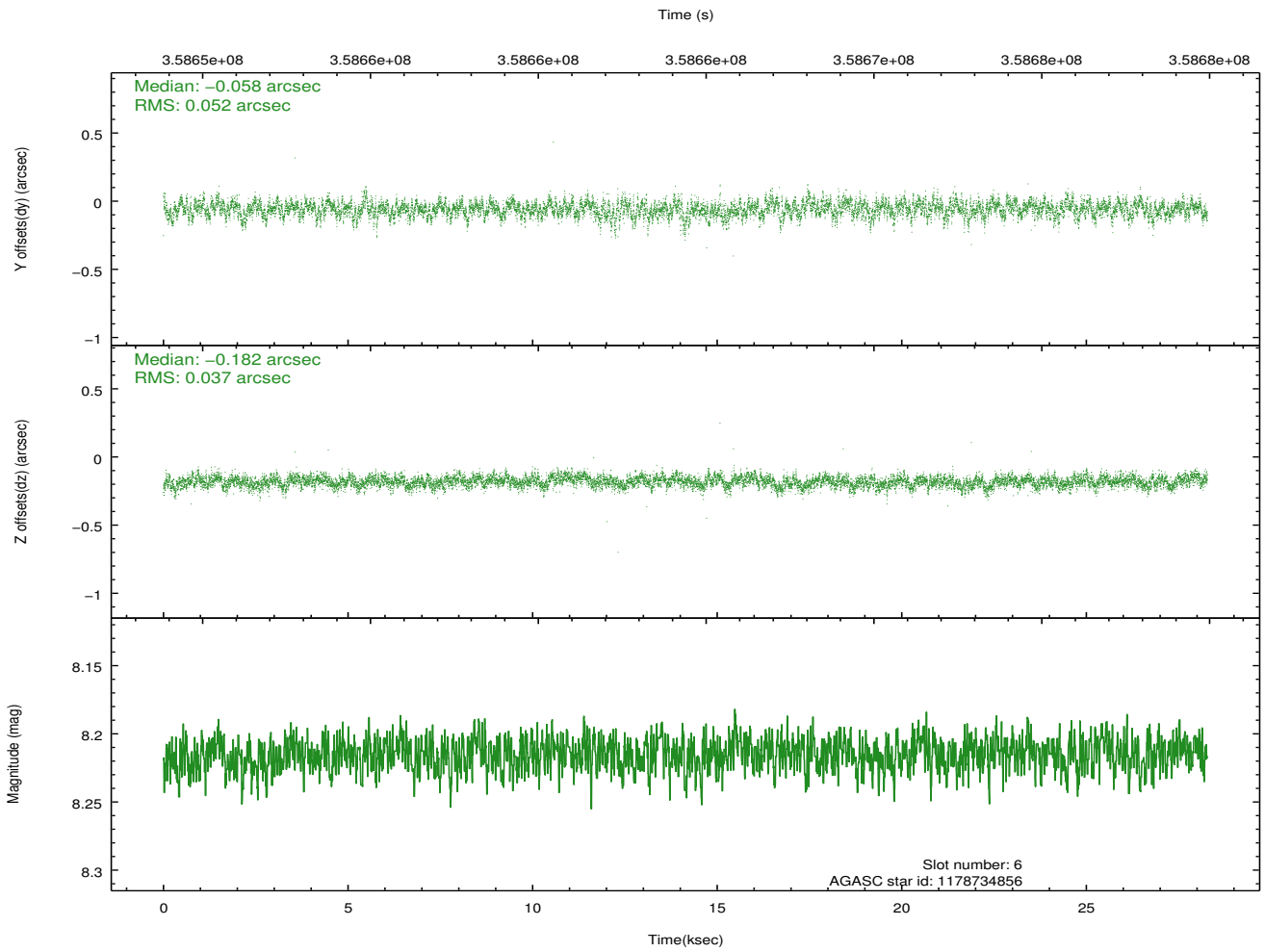
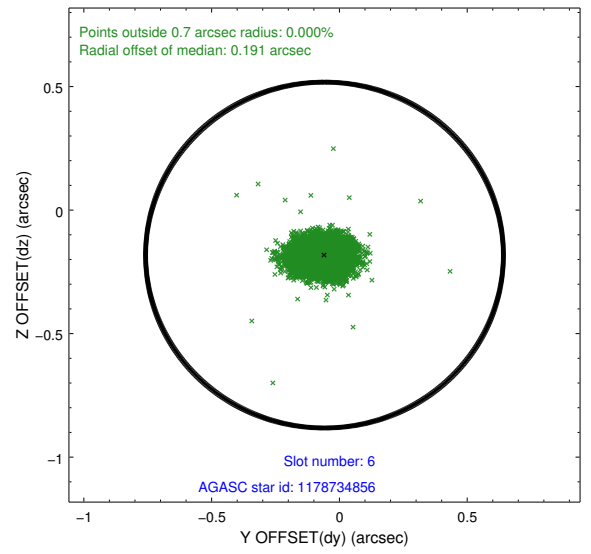
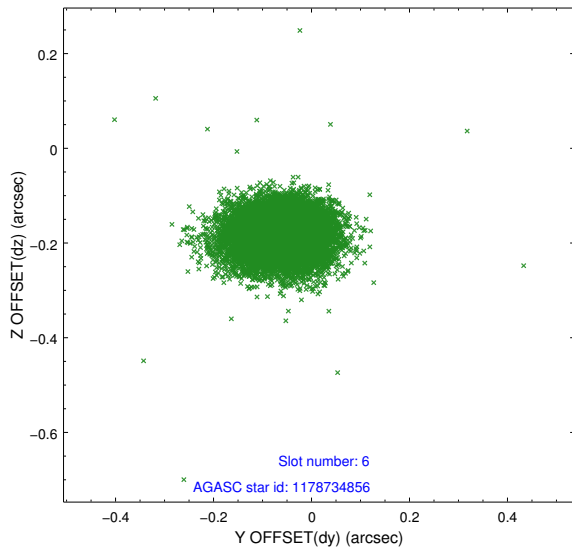
2.4.2 Slot 4



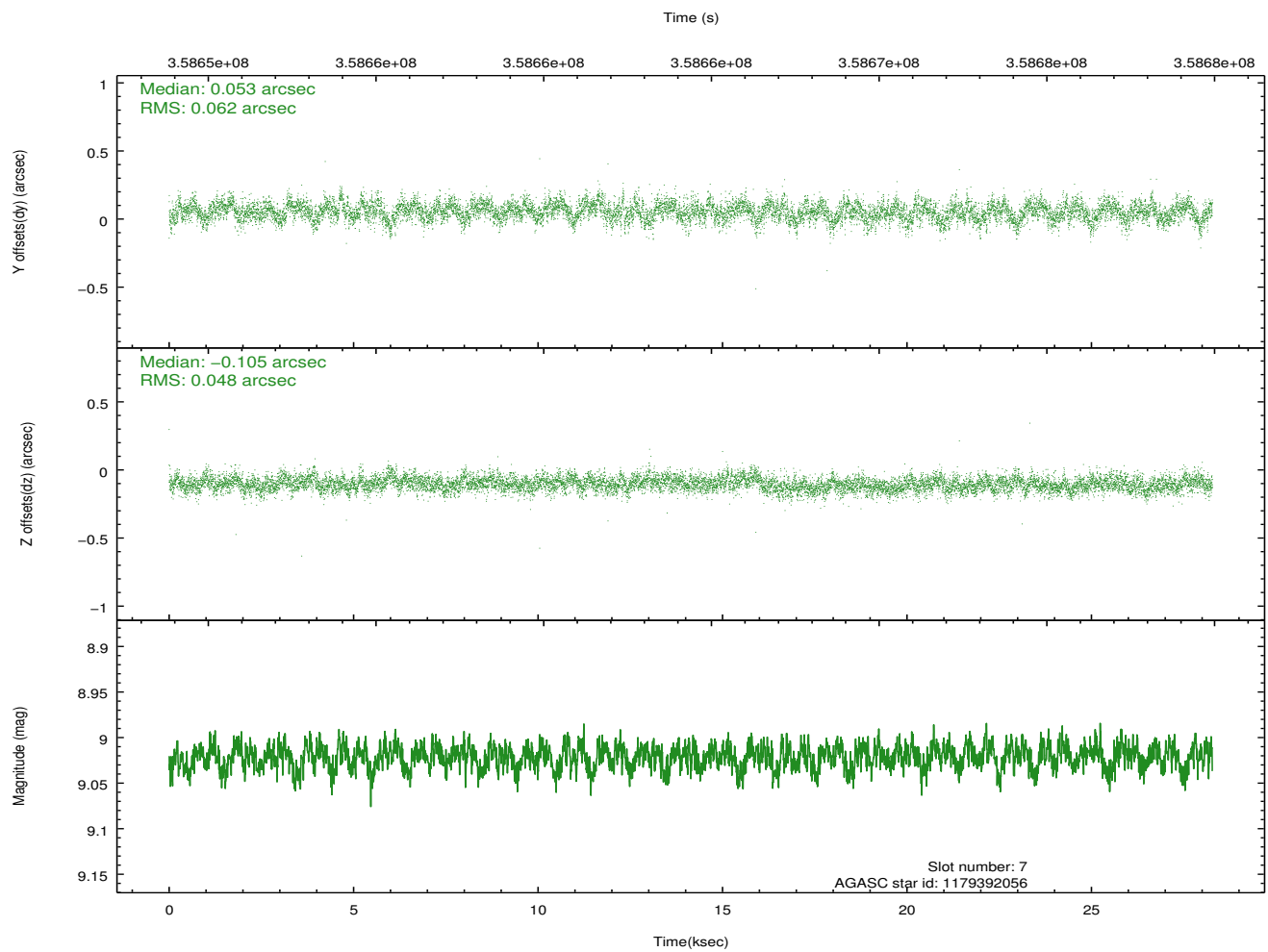
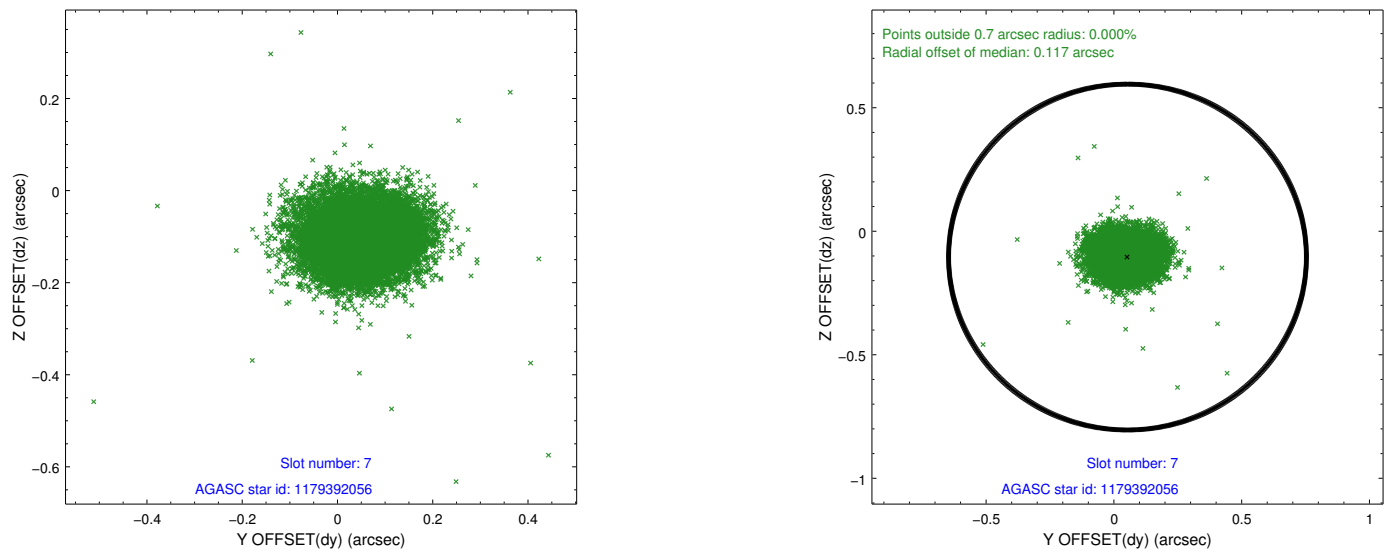
2.4.3 Slot 5



2.4.4 Slot 6

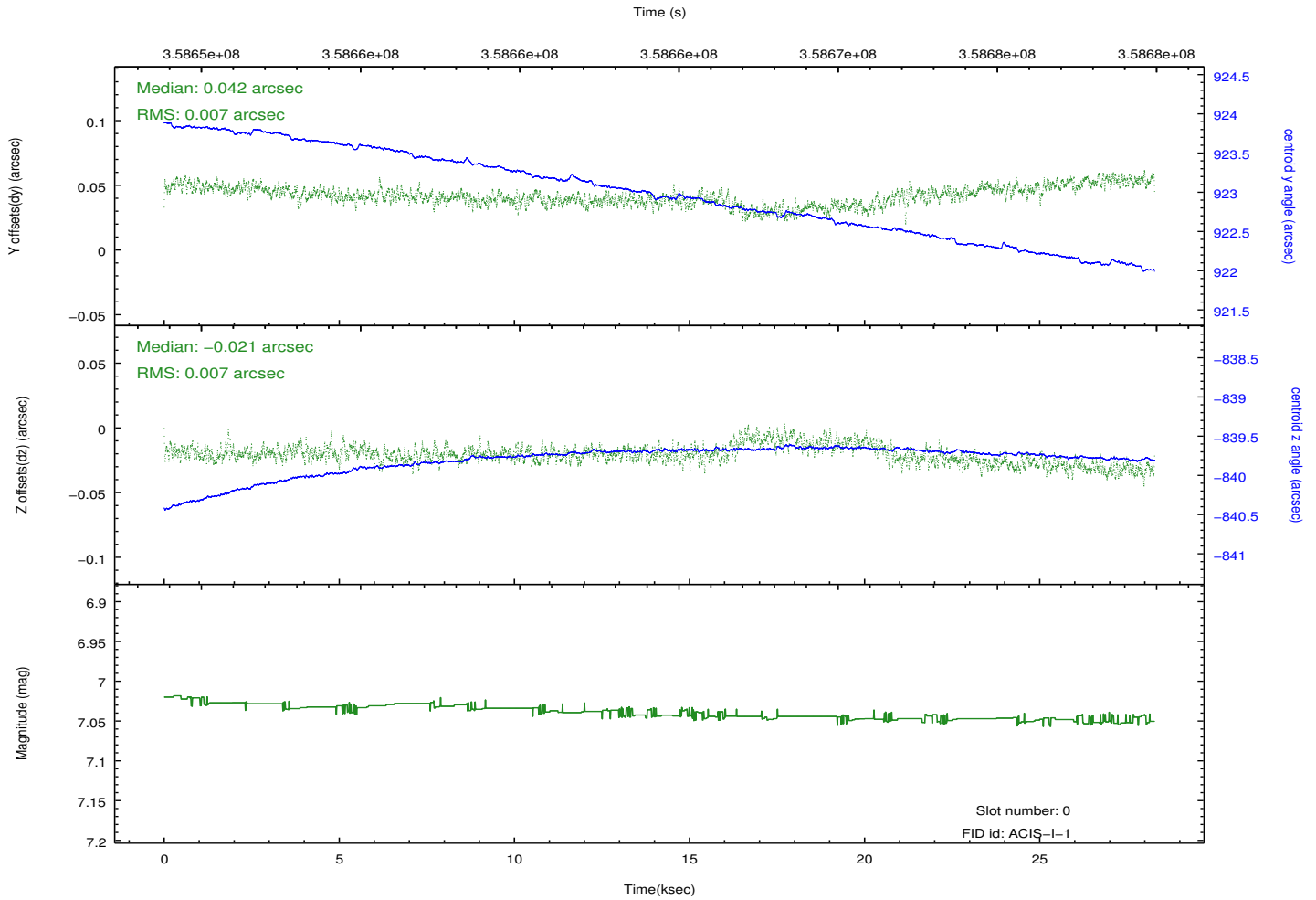
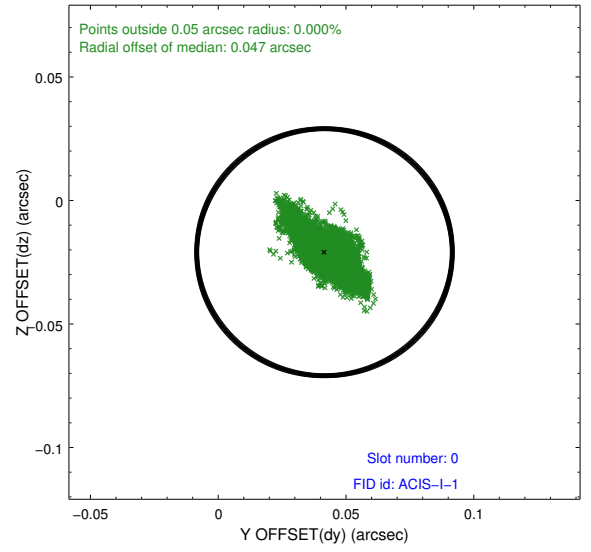
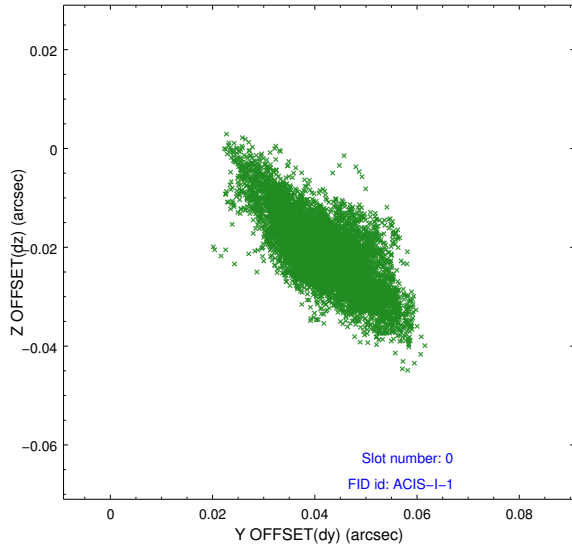


2.4.5 Slot 7

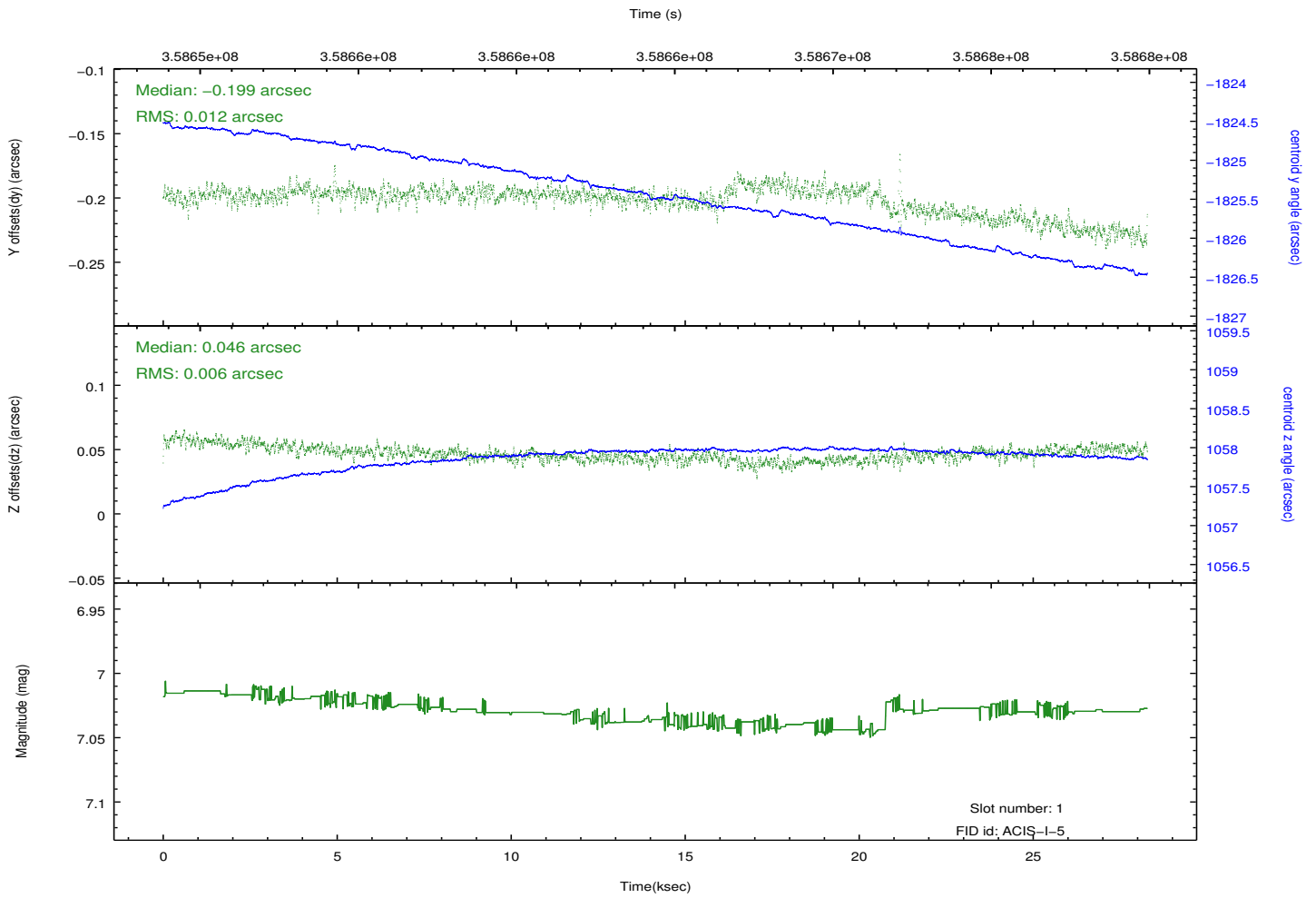
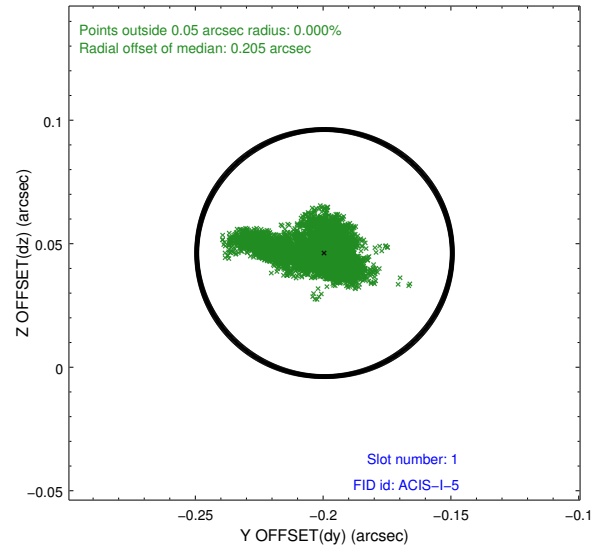
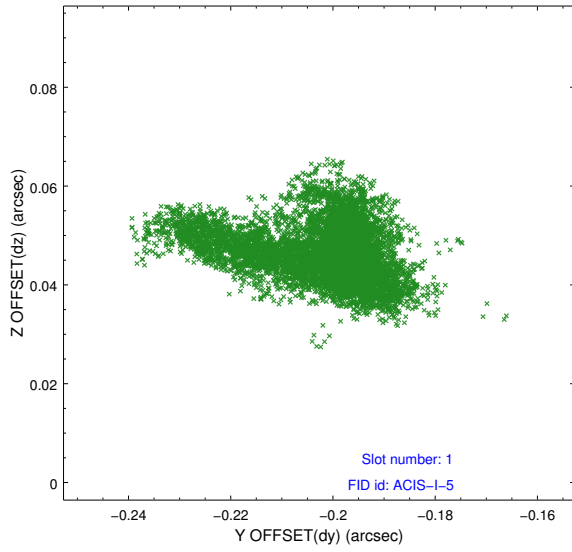


2.5 FID Slots

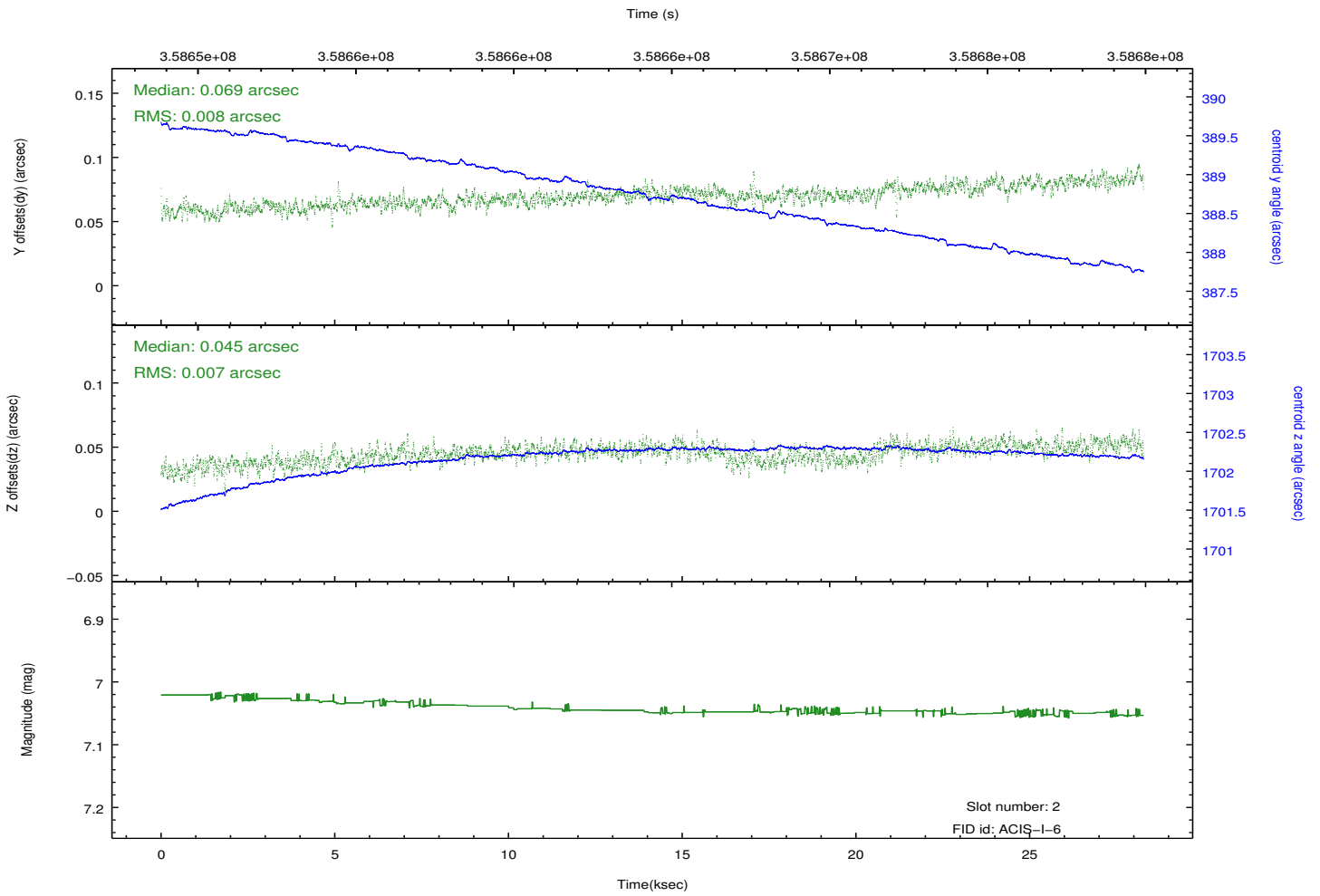
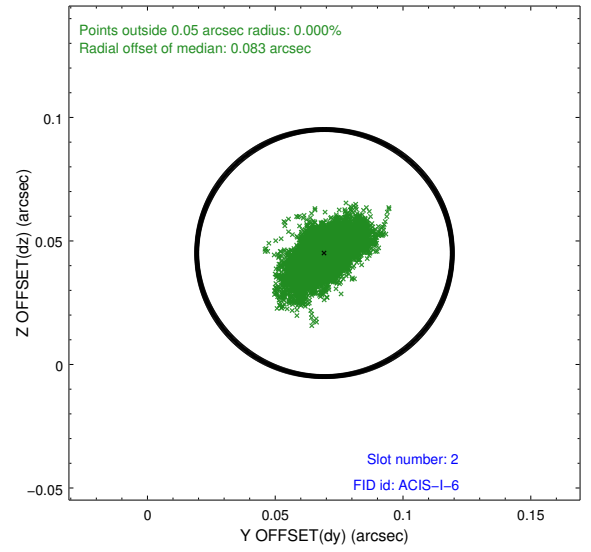
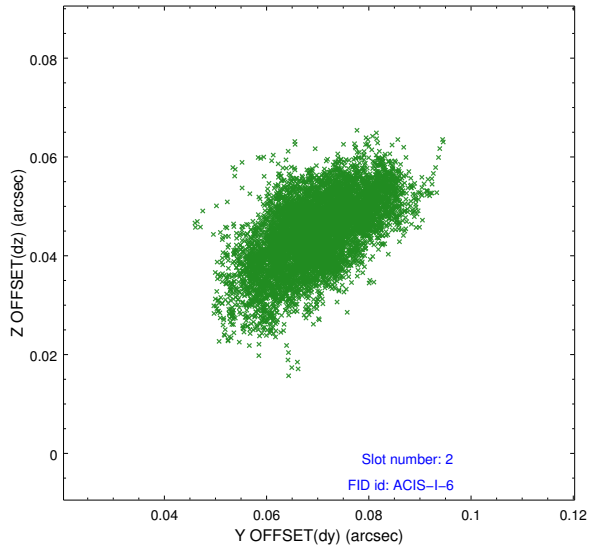
2.5.1 Slot 0



2.5.2 Slot 1



2.5.3 Slot 2



A Summary

A.1 Status

V&V Scientist	Jen Lauer
V&V Date (YYYY-MM-DD)	2012.06.11
V&V Edition	1
V&V Disposition and Status	OK
V&V Charge Time	28.2798752

A.2 Comments