

V&V Reference Report

L2 ASCDS Version : 8.4.5

Observation 1009 - L2 Version 4
Chandra X-Ray Center

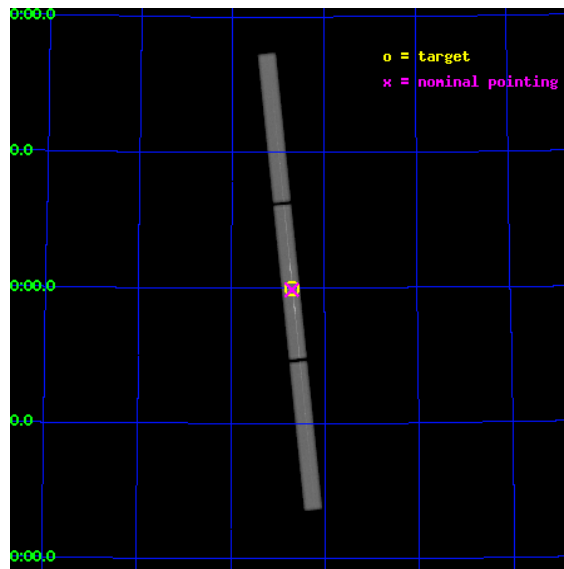
L2 Processing Date : Sep 16 2012

Contents

1	Front	2
2	OBI	3
2.1	OBI	3
2.1.1	Images	3
2.1.2	Parameters	4
2.1.3	Events	4
2.2	Compared Parameters	5
2.3	Aspect	6
2.4	Star Slots	9
2.4.1	Slot 3	9
2.4.2	Slot 4	10
2.4.3	Slot 5	11
2.4.4	Slot 6	12
2.4.5	Slot 7	13
2.5	FID Slots	14
2.5.1	Slot 0	14
2.5.2	Slot 1	15
2.5.3	Slot 2	16
3	Gratings	17
3.1	LETG Arm	17
A	Summary	19
A.1	Status	19
A.2	Comments	19

1 Front

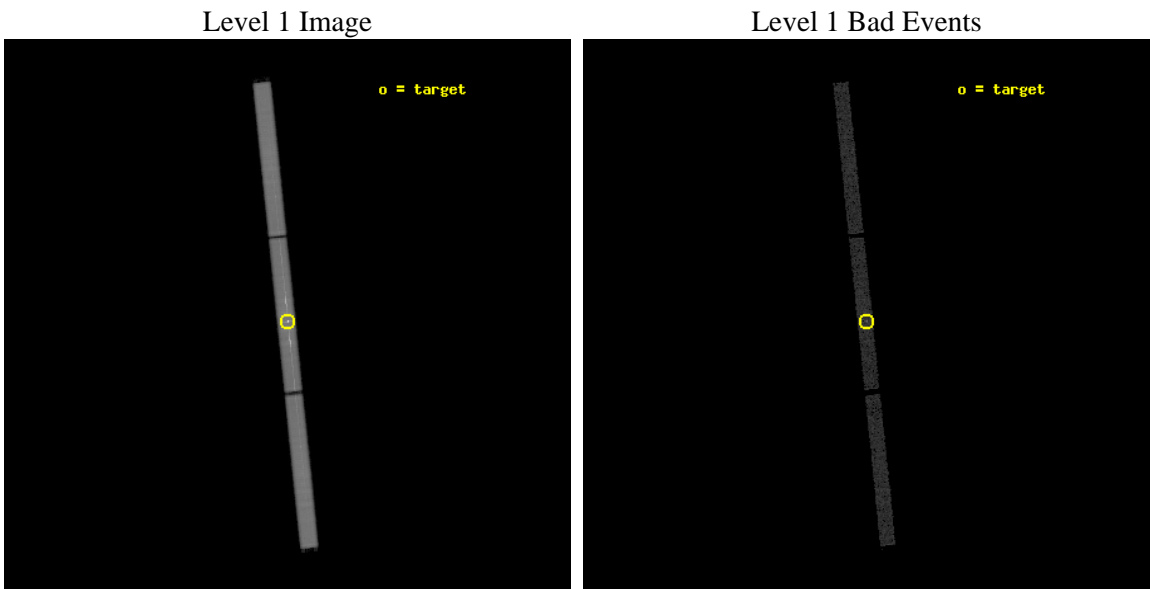
seq_num	390001	Sequence number
obs_id	1009	Observation id
title	GRATINGS CALIBRATION OBSERVATIONS OF HZ43 AND CAPELLA	Proposal tit
observer	Dr. CXC Calibration	Principal investigator
object	CAPELLA	Source name
ra_targ	79.17625	Observer's specified target RA [deg]
dec_targ	45.997889	Observer's specified target Dec [deg]
ra_nom	79.17531995416	Nominal RA [deg]
dec_nom	45.993116012877	Nominal Dec [deg]
roll_nom	264.01300891855	Nominal Roll [deg]
revision	4	Processing version of data
ontime	26982.357288867	[s]
livetime	26834.574000434	Ontime multiplied by DTCOR
l2events	1179097	Number of level 2 events



2 OBI

2.1 OBI

2.1.1 Images



2.1.2 Parameters

obi_num	0	Obi number	sched_exp_time	27000.000000	[s] Scheduled observation exposure time
ascdsver	8.4.5	Processing system revision	ontime	26982.357289866	[s]
caldbver	4.5.1.1	 	l1events	1676238	Number of level 1 events
date	2012-09-16T05:09:28	Date and time of file creation			
revision	4	Processing version of data			

2.1.3 Events

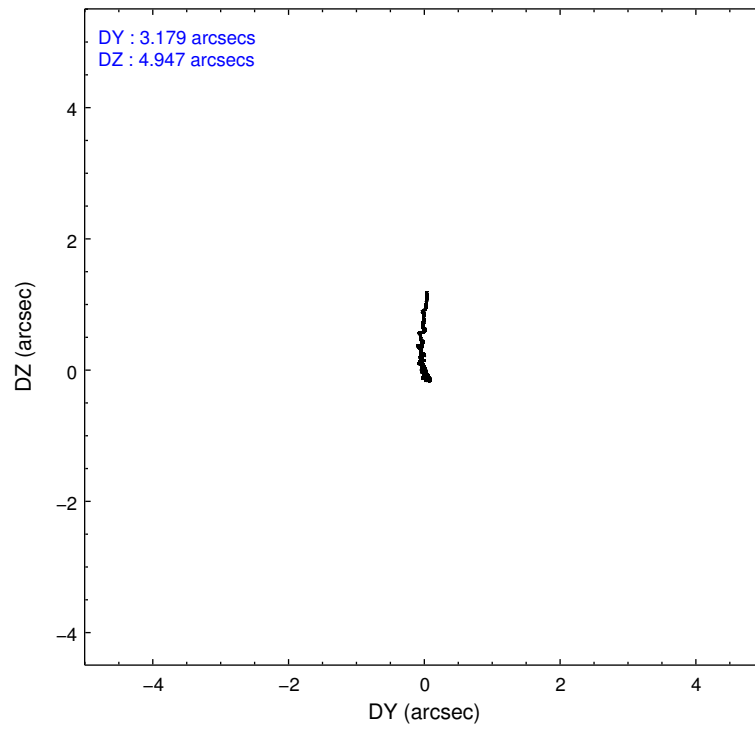
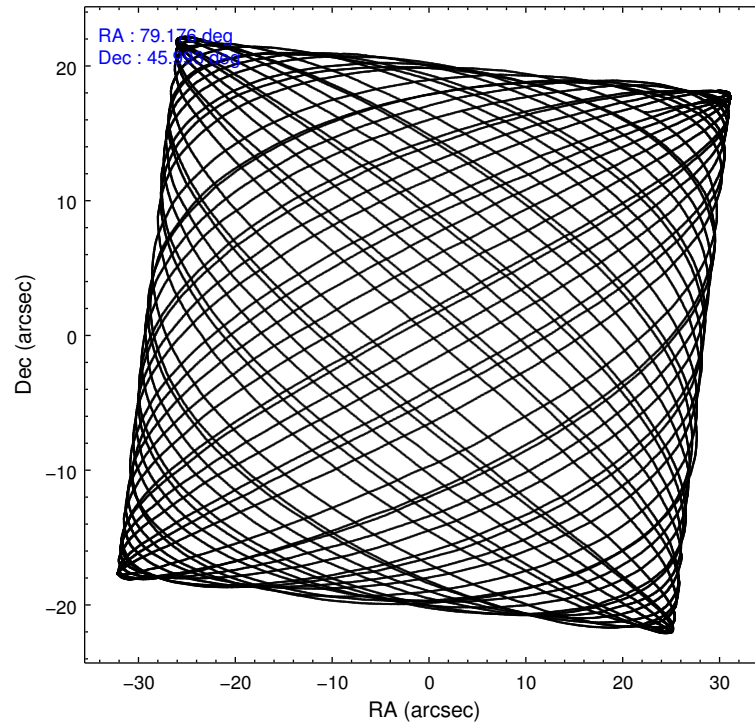
Level 1 Events

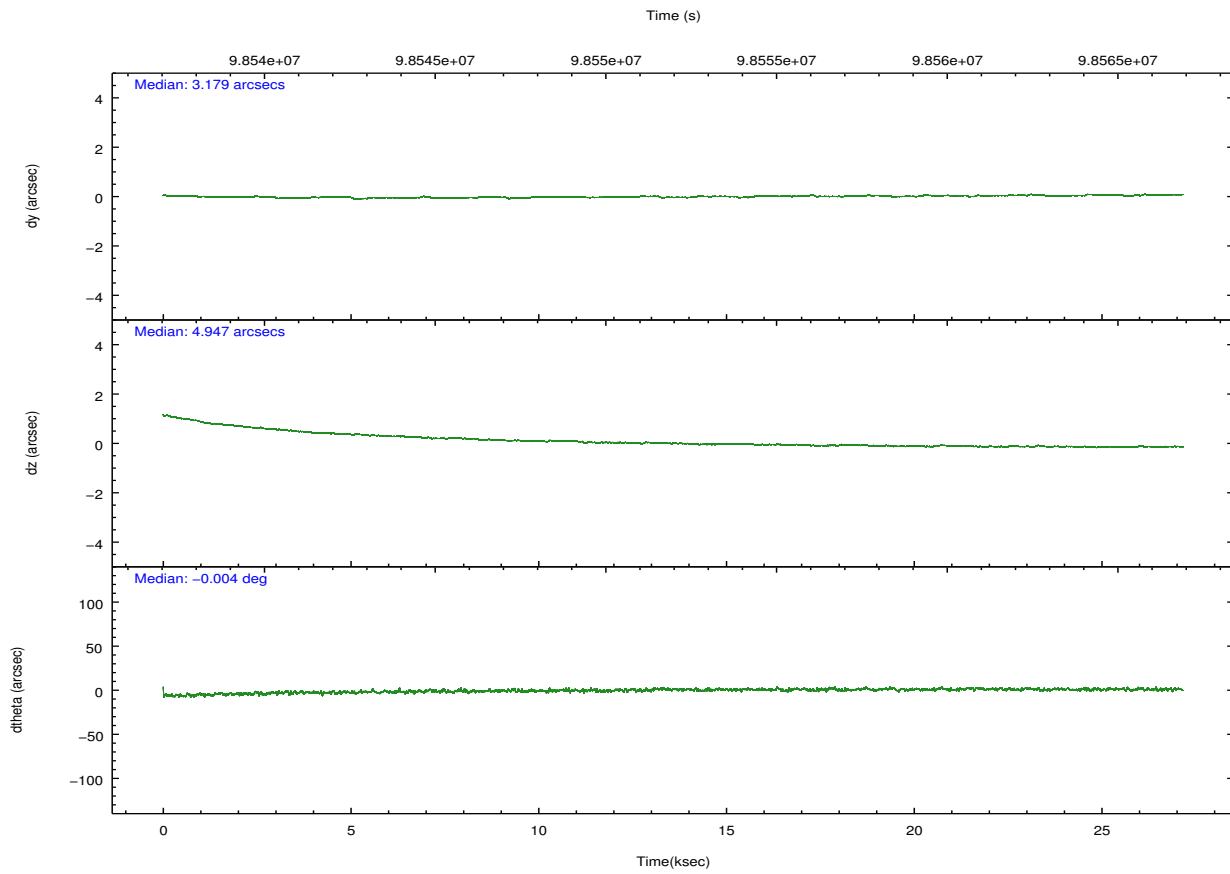
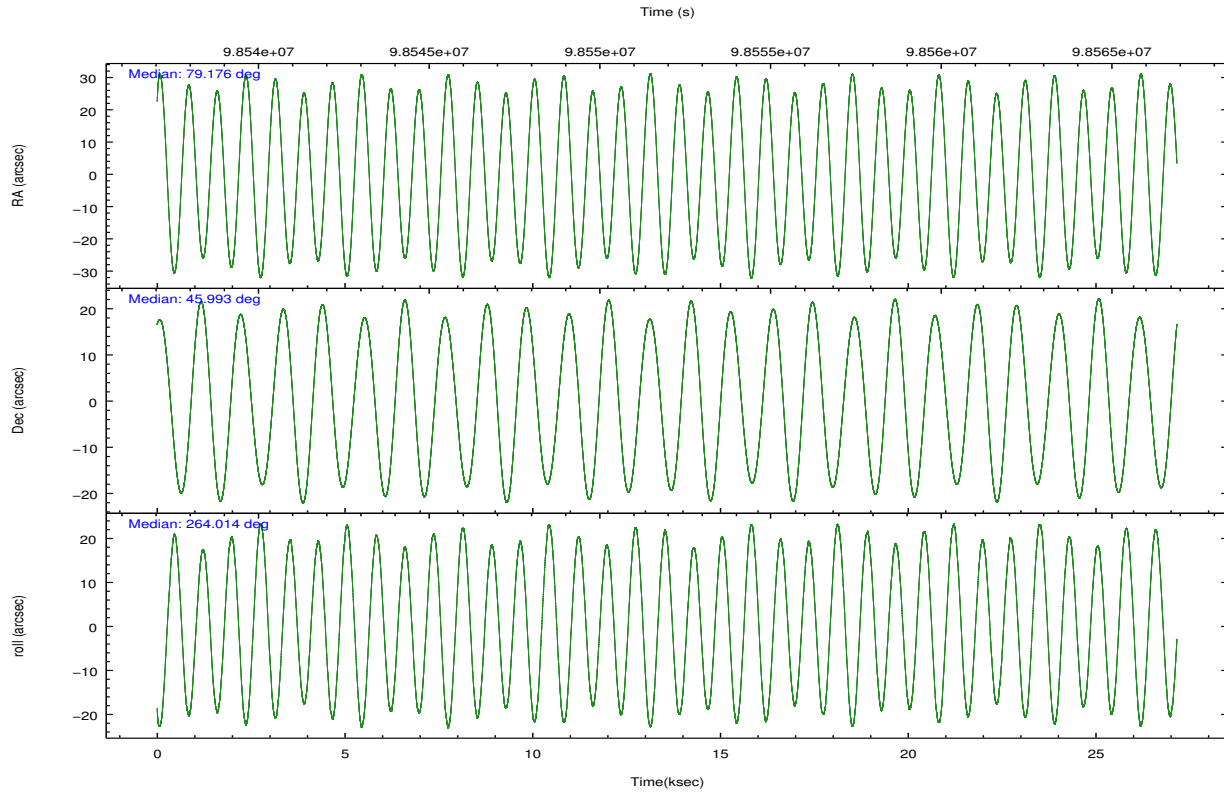
	segment 1	segment 2	segment 3
level 1 events	522814	623234	530190
rejected events	10287	10713	10383
rejected %	1%	1%	1%

2.2 Compared Parameters

Parameter	Planned	Actual	Parameter	Planned	Actual
Instrument	HRC	HRC	Obspar format		
Detector	HRC-S	HRC-S	version number	7	7
Grating	LETG	LETG	Obspar file type	PREDICTED	ACTUAL
Data mode	OBSERVING	OBSERVING	Obspar update status	NONE	UPDATED
Observation mode	POINTING	POINTING			
[deg] Pointing RA	79.156749	79.17531995415989			
[deg] Pointing Dec	46.018767	45.9931160128769			
[deg] Pointing Roll	263.959038	264.0130089185509			
[s] Window start time (MET)	97372864.184000	97372864.184000			
[s] Window stop time (MET)	99705664.184000	99705664.184000			
[mm] SIM focus pos	-1.429586	-1.428180813131781			
[mm] SIM defocus	0.1037507710433287	0.1051558262725154			
[mm] SIM translation stage pos	250.455976	250.466033080201			
[mm] SIM translation stage offset	0	-0.01005468664627074			
[s] Observation start time (MET)	98538547.184000	98538107.311543			
Observation start date	2001-02-14T11:48:03	2001-02-14T11:41:47			
[s] Observation end time (MET)	98565547.184000	98566064.700121			
Observation end date	2001-02-14T19:18:03	2001-02-14T19:27:44			

2.3 Aspect



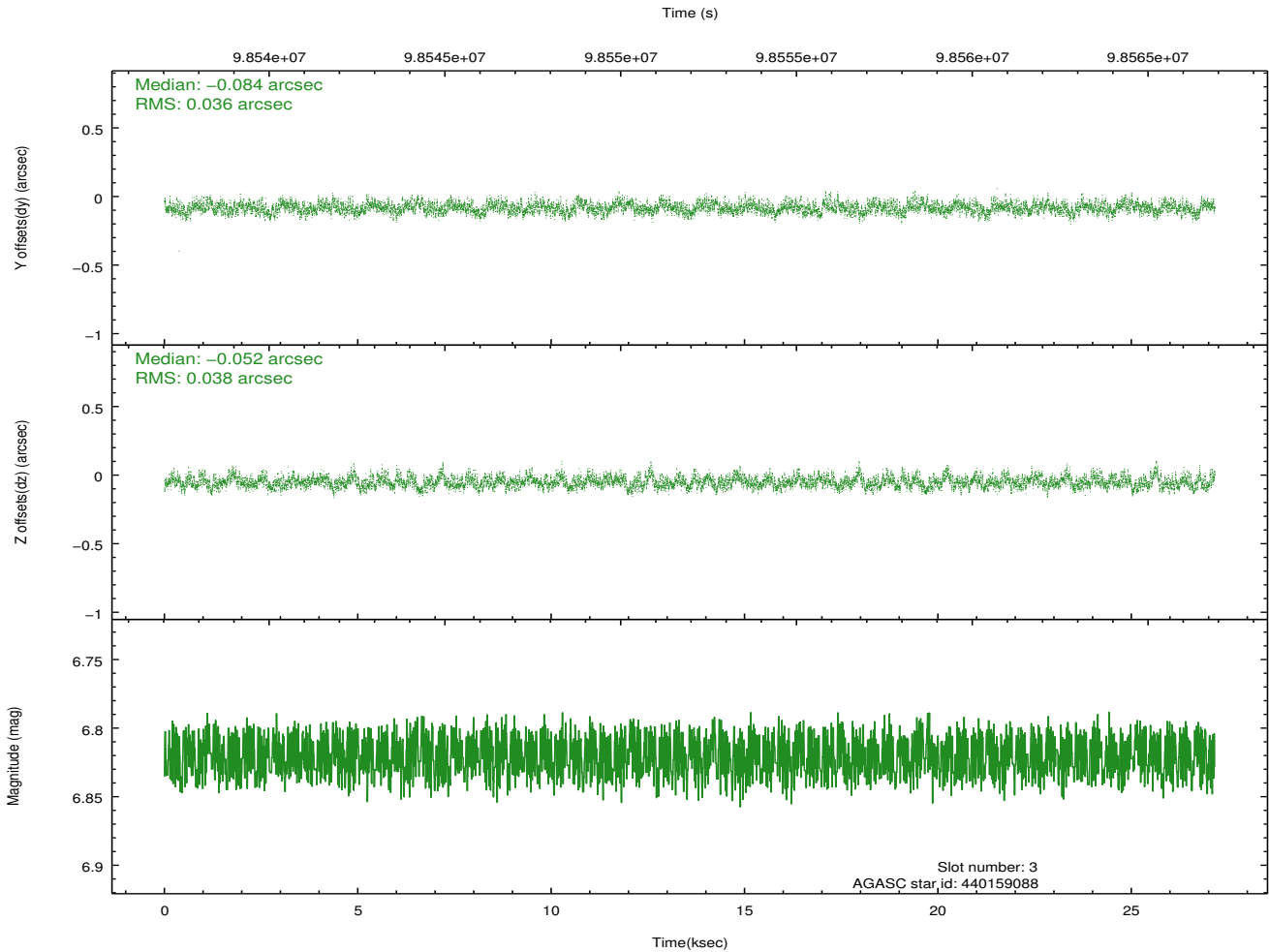
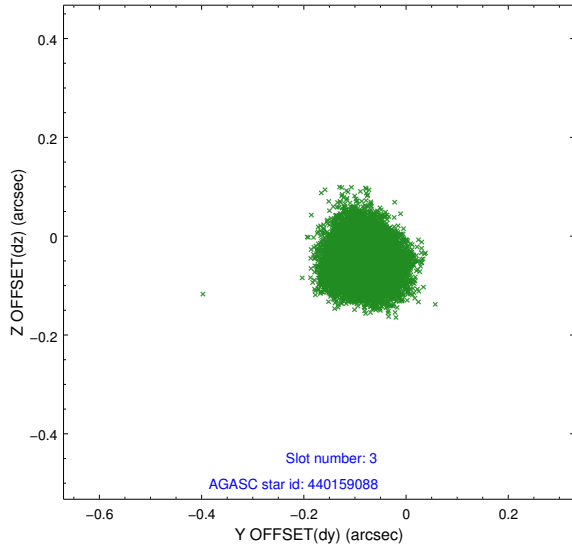


Slot Statistics

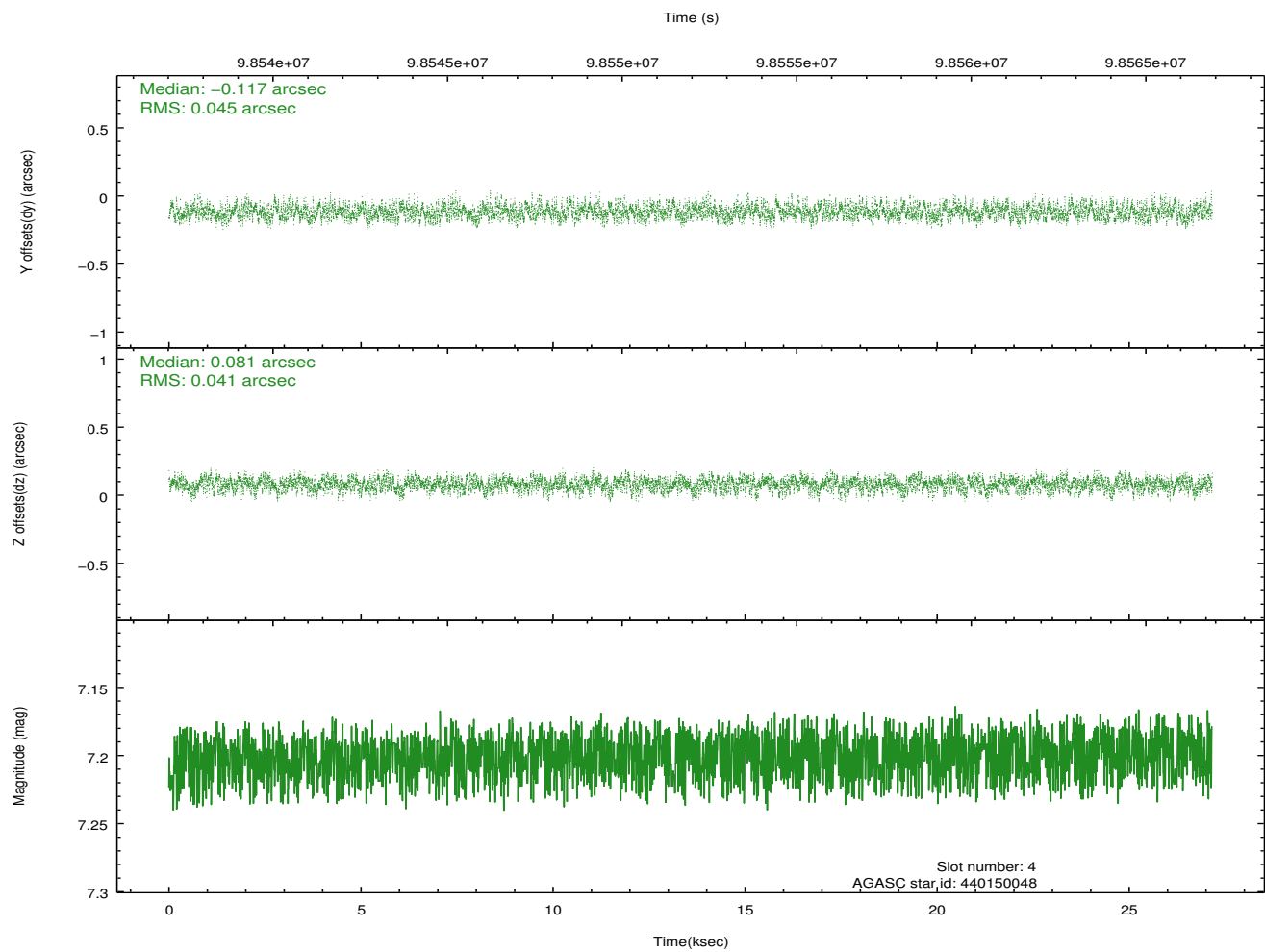
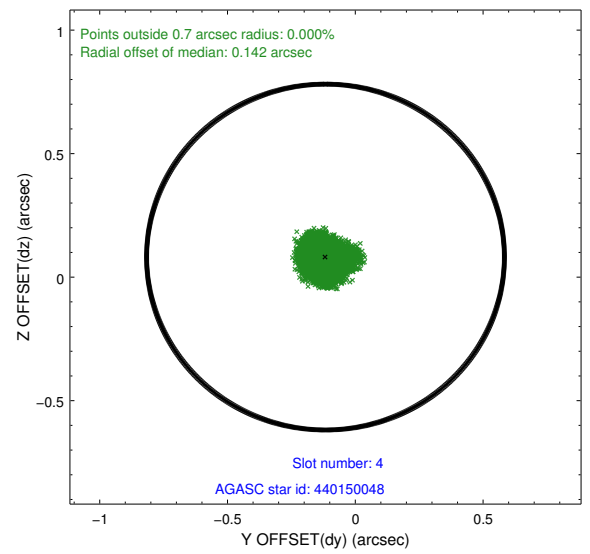
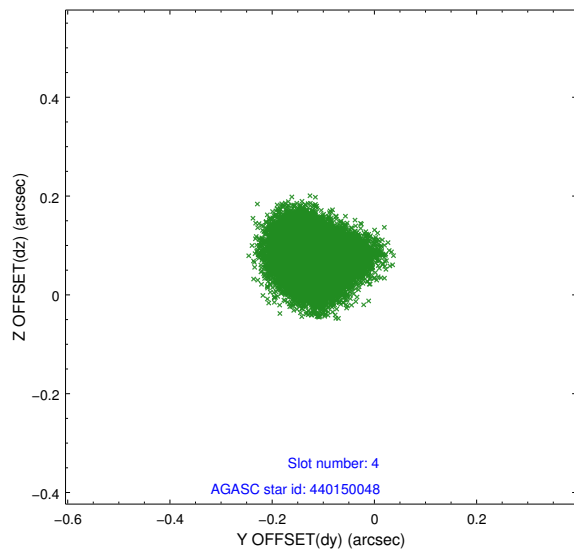
slot	status	id	mag	n_pts	med_dy	med_dz	dr1	dr2	ra	dec	mean_y	mean_z
0	FID	HRC-S-1	6.98	6624	0.120	-0.160	0.008	0.018	0.000000	0.000000	-1157.24	-453.62
1	FID	HRC-S-3	7.00	6625	0.144	-0.041	0.009	0.019	0.000000	0.000000	-1160.13	575.96
2	FID	HRC-S-4	6.93	6624	0.125	-0.096	0.006	0.010	0.000000	0.000000	1240.83	578.67
3	GUIDE	440159088	6.82	13250	-0.084	-0.052	0.057	0.088	79.453034	46.128063	-470.84	692.86
4	GUIDE	440150048	7.20	13249	-0.117	0.081	0.068	0.099	79.112838	46.416060	-1411.35	-259.42
5	GUIDE	440158344	7.94	13249	0.131	0.019	0.046	0.074	79.344888	45.394991	2182.30	708.62
6	GUIDE	440164960	8.30	13250	0.070	0.056	0.063	0.102	79.132526	46.140947	-431.08	-106.91
7	GUIDE	440149808	8.44	13246	-0.009	-0.099	0.079	0.132	78.873930	46.405955	-1313.87	-845.75

2.4 Star Slots

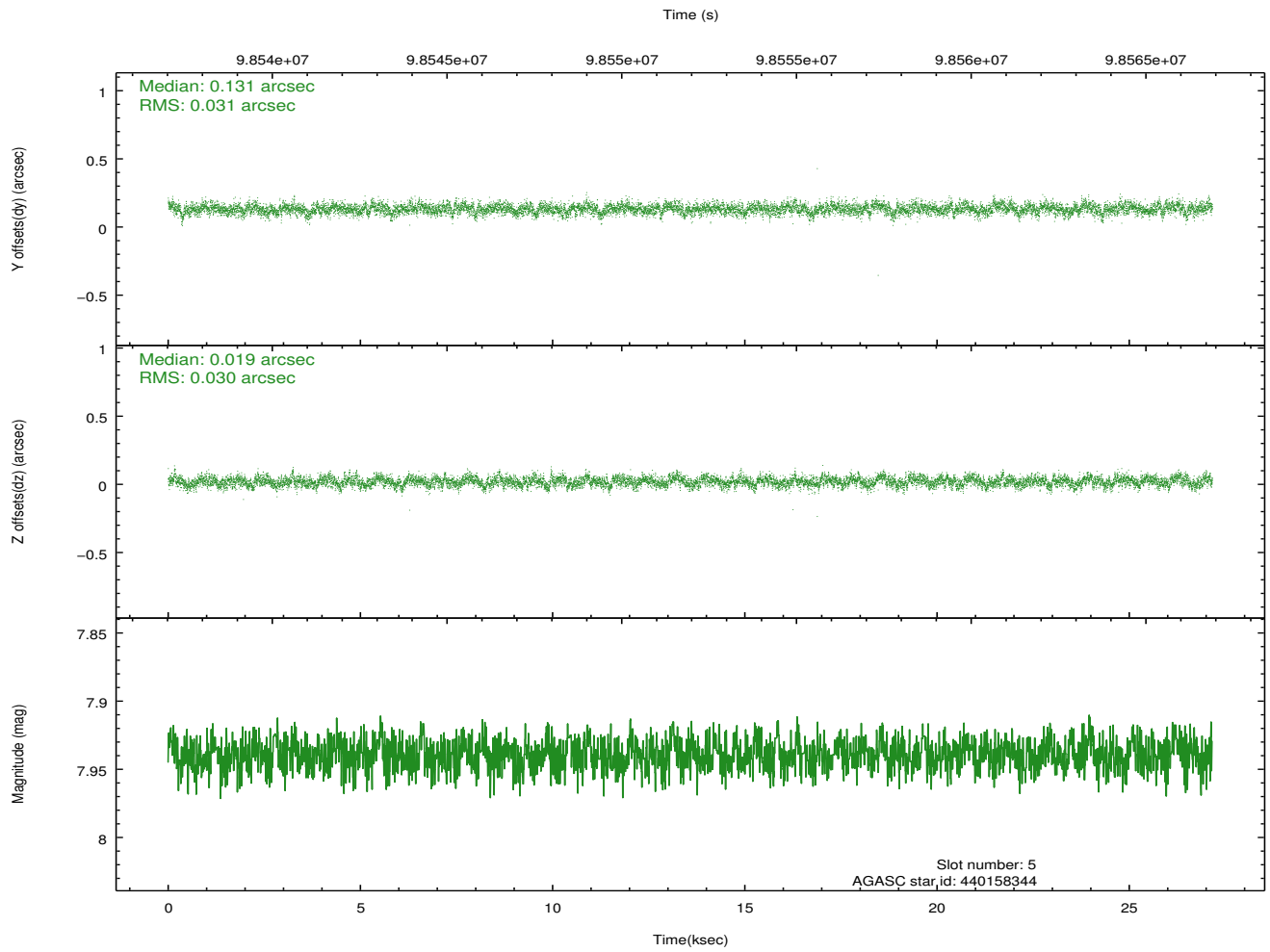
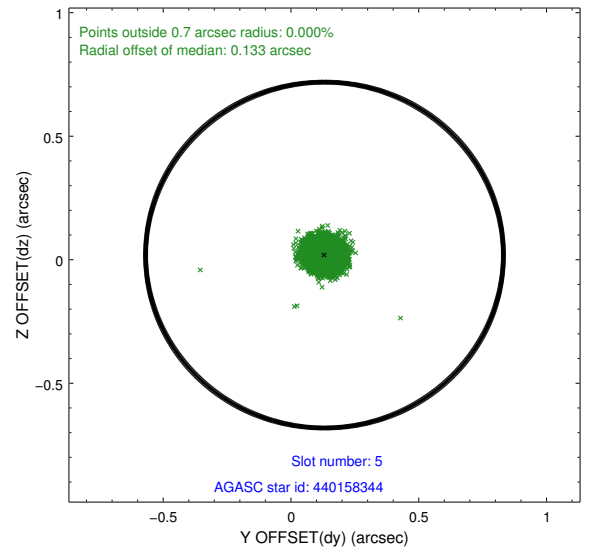
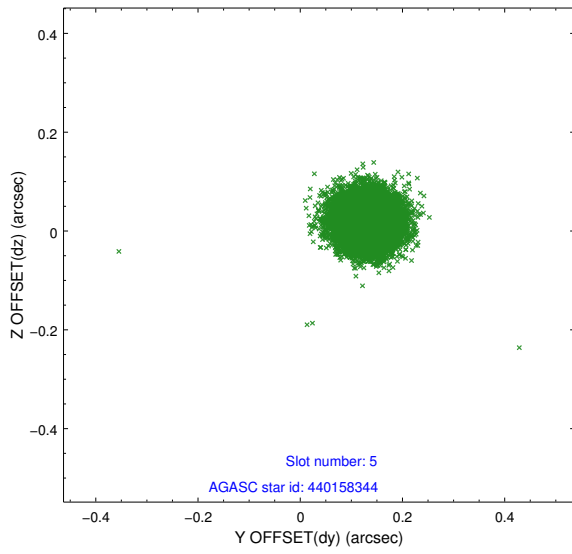
2.4.1 Slot 3



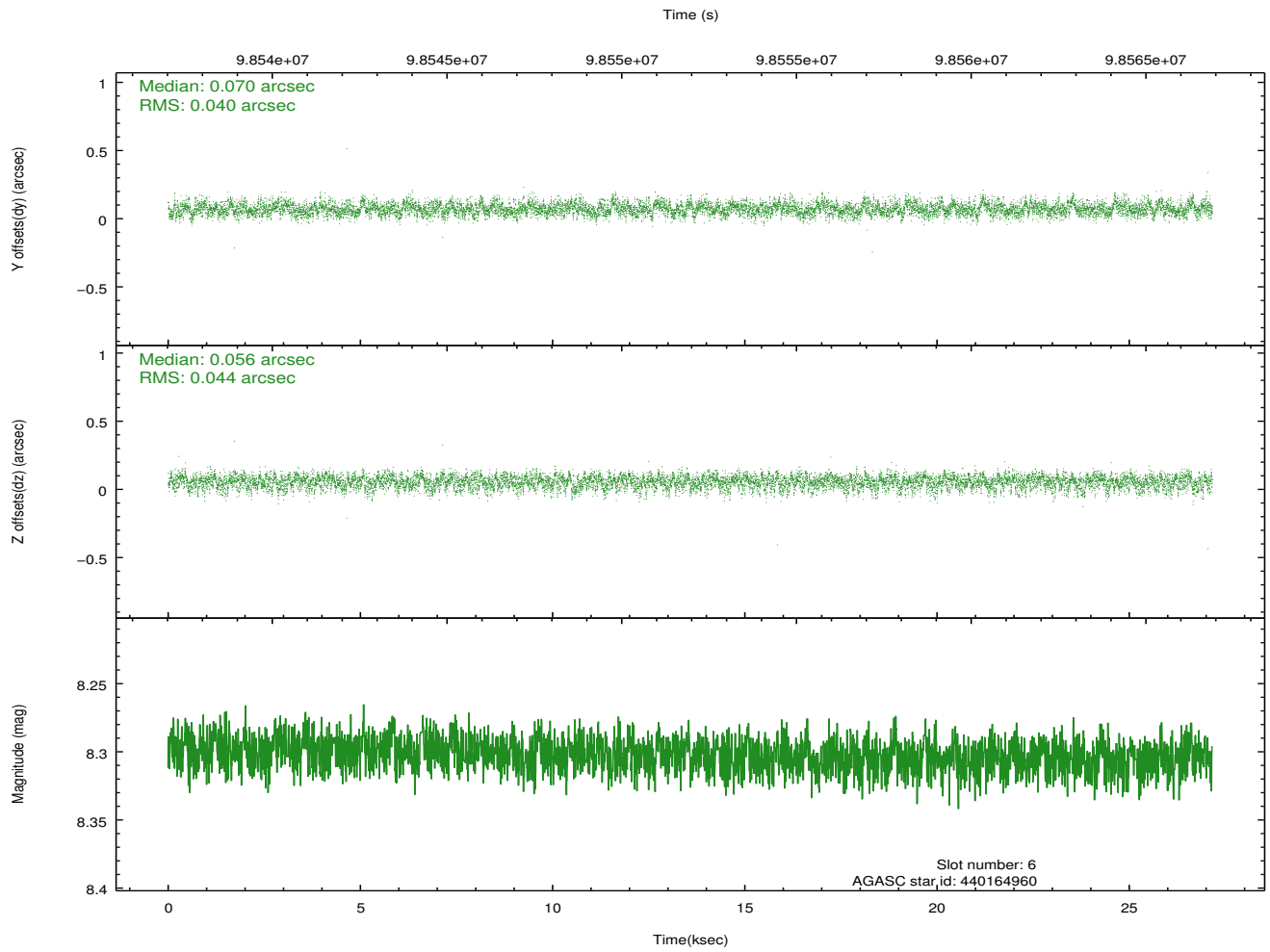
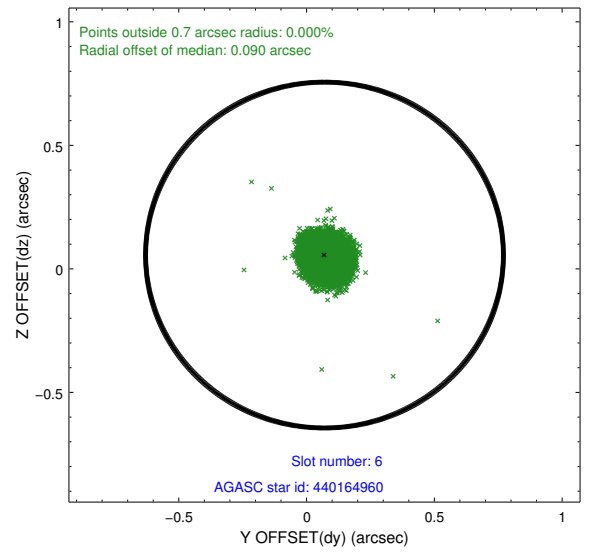
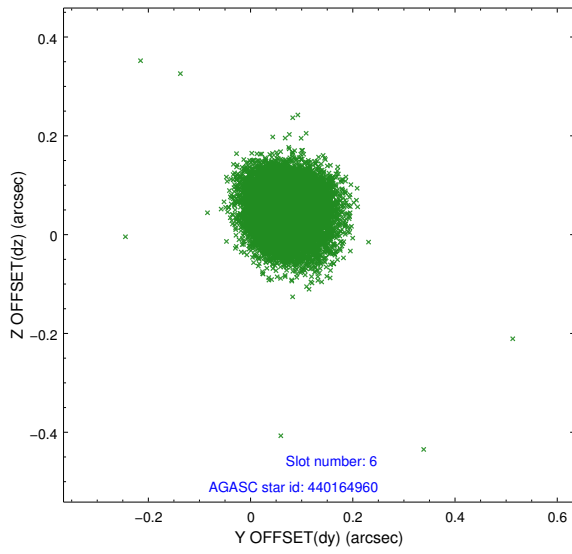
2.4.2 Slot 4



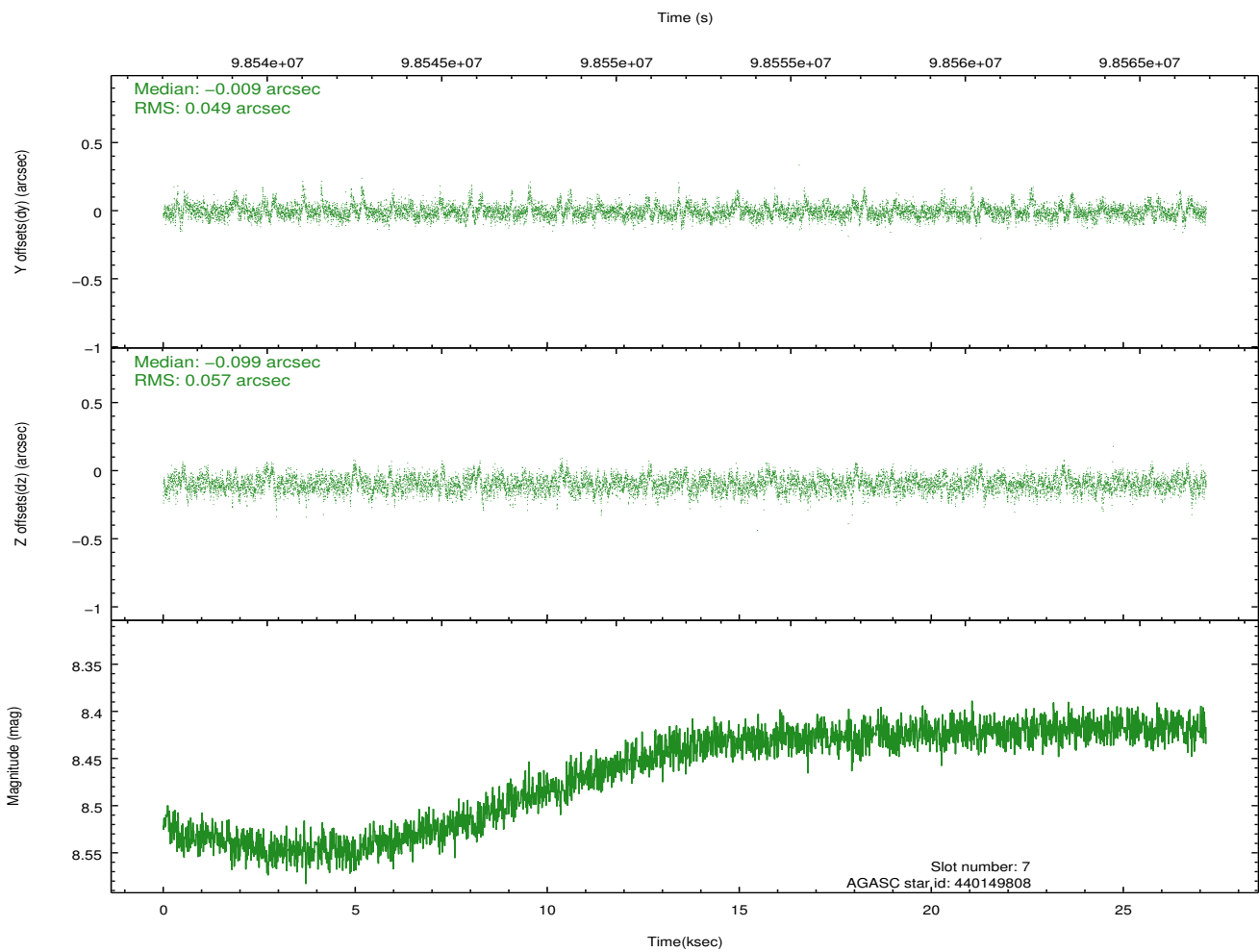
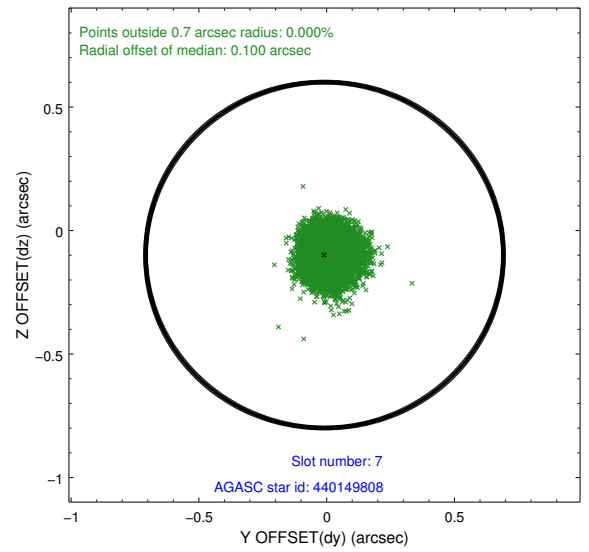
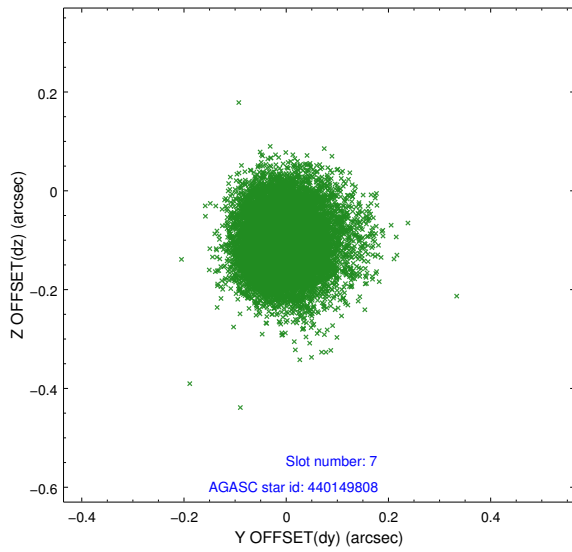
2.4.3 Slot 5



2.4.4 Slot 6

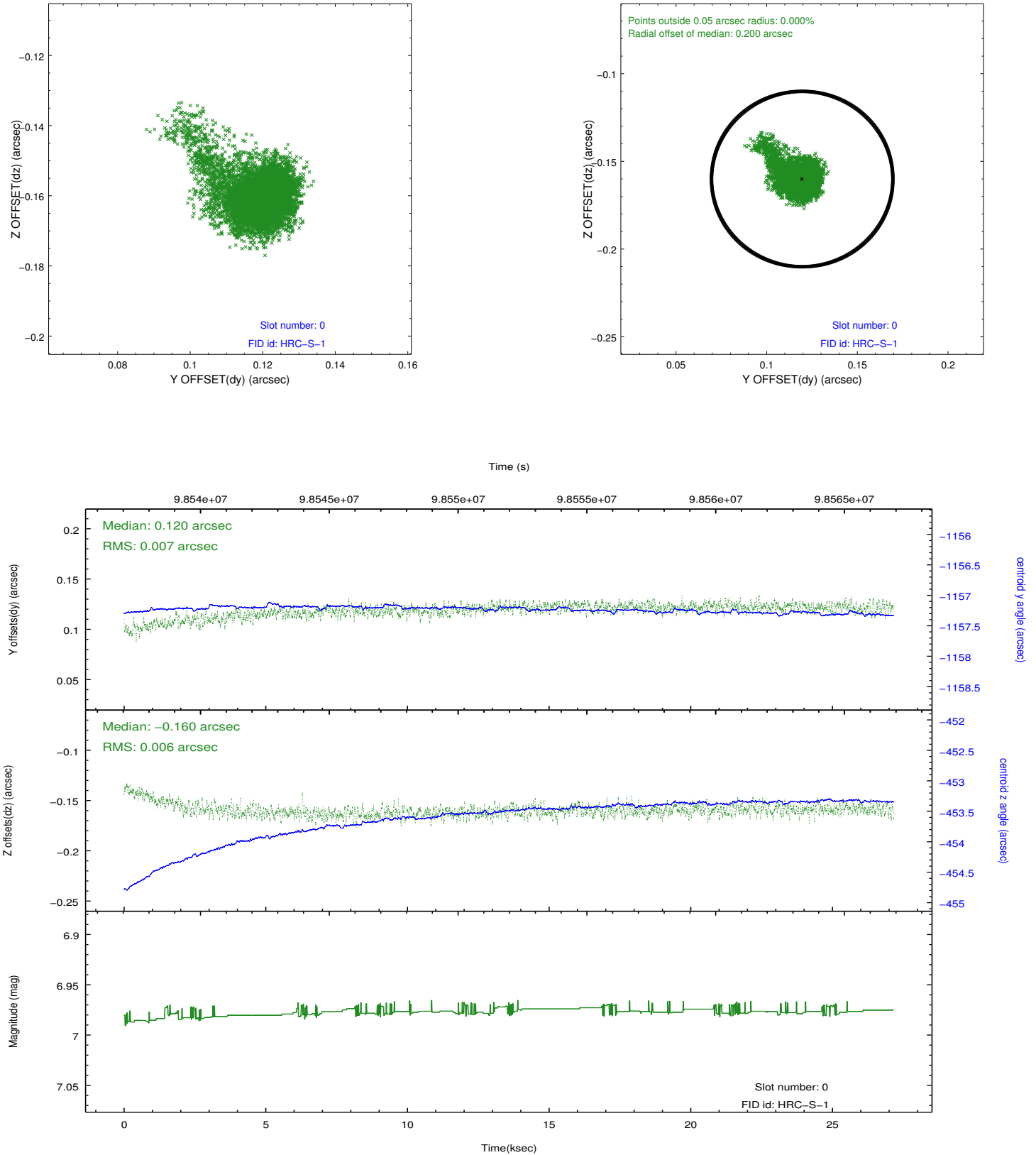


2.4.5 Slot 7

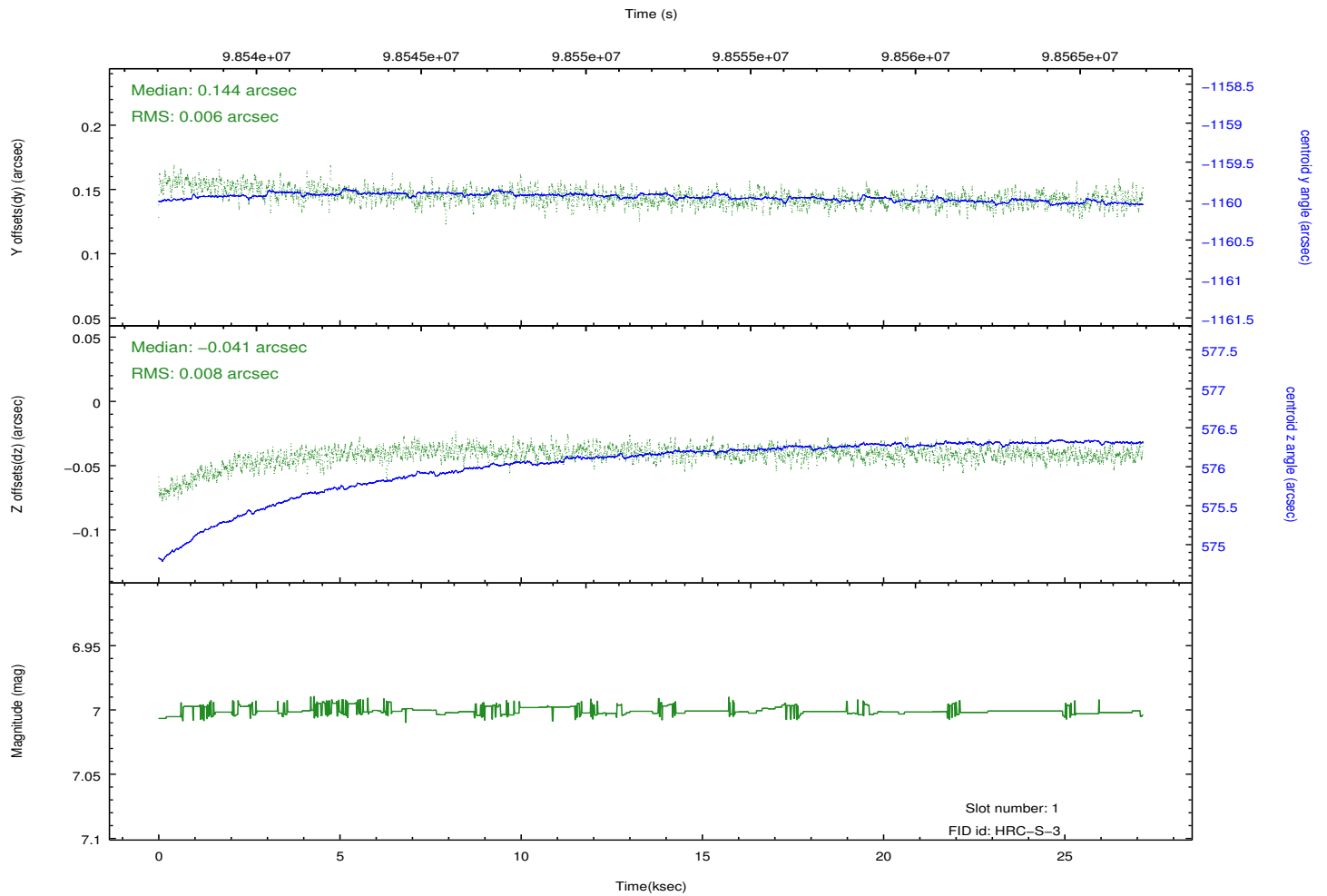
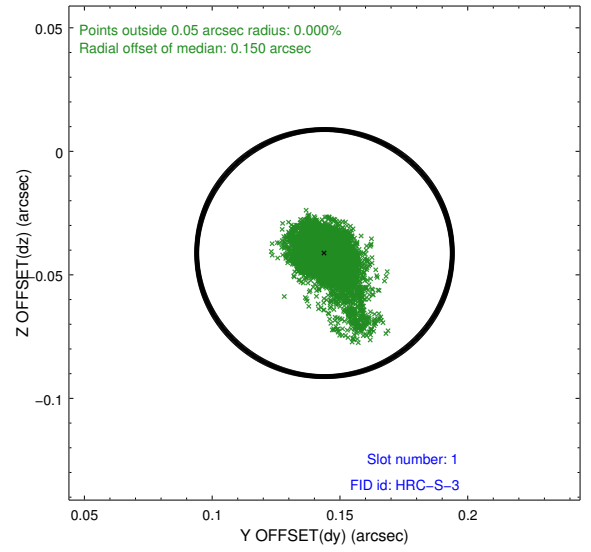
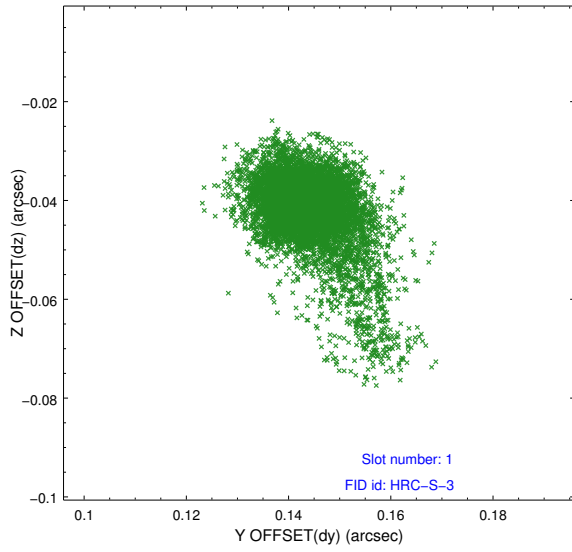


2.5 FID Slots

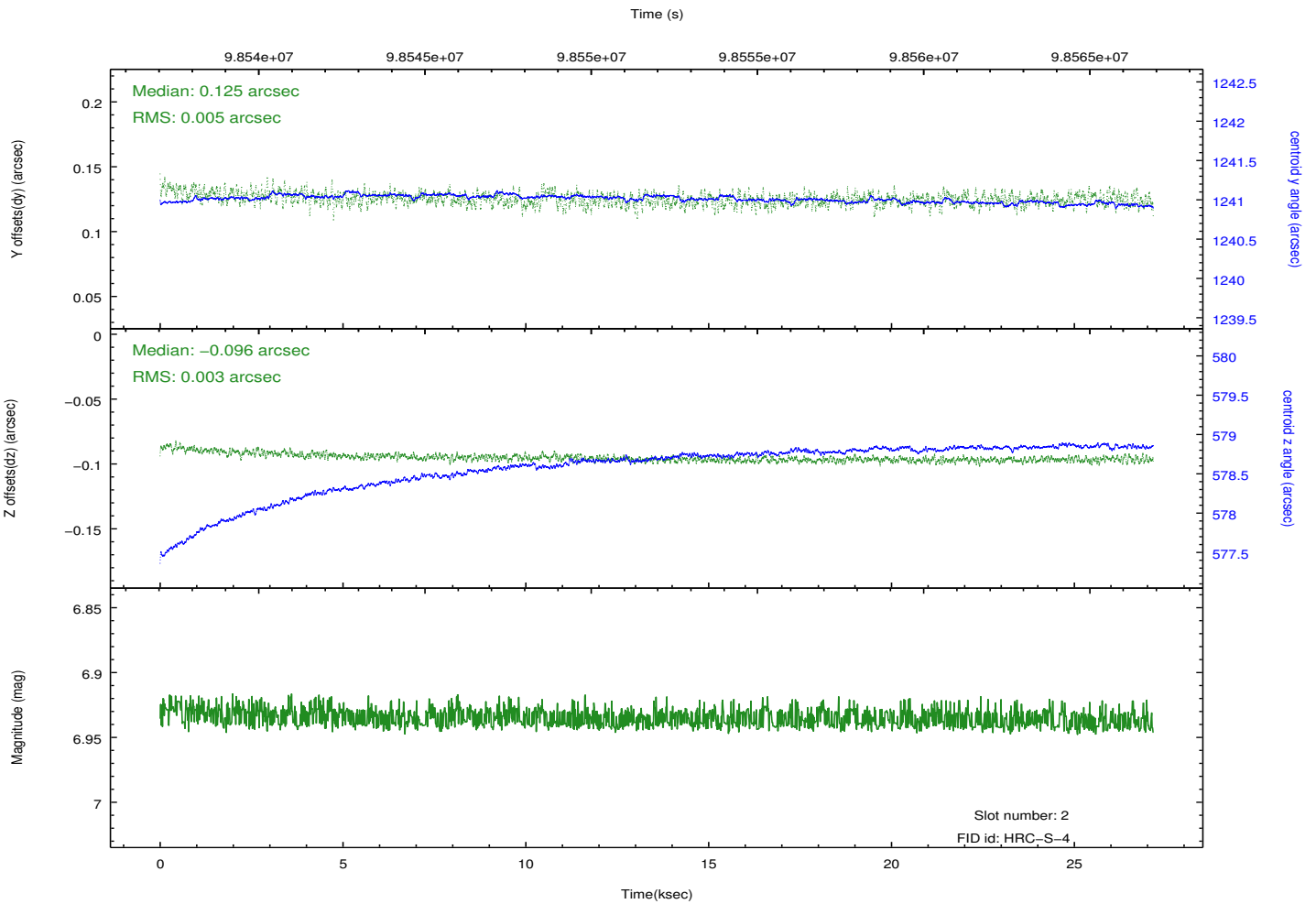
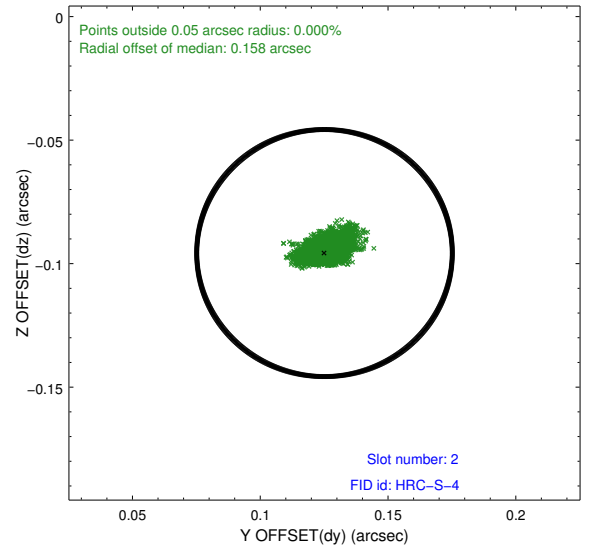
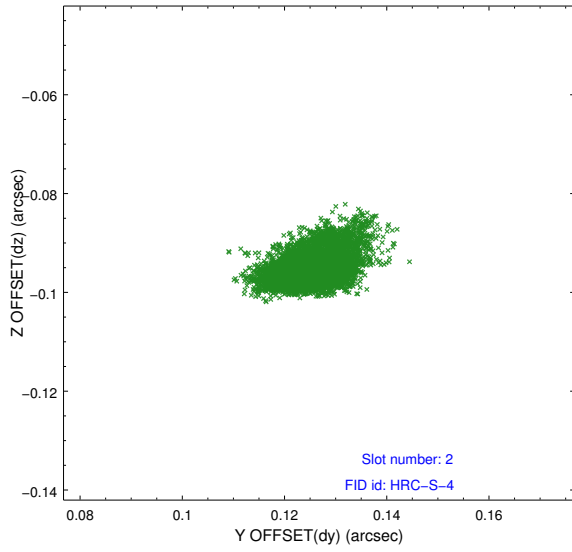
2.5.1 Slot 0



2.5.2 Slot 1

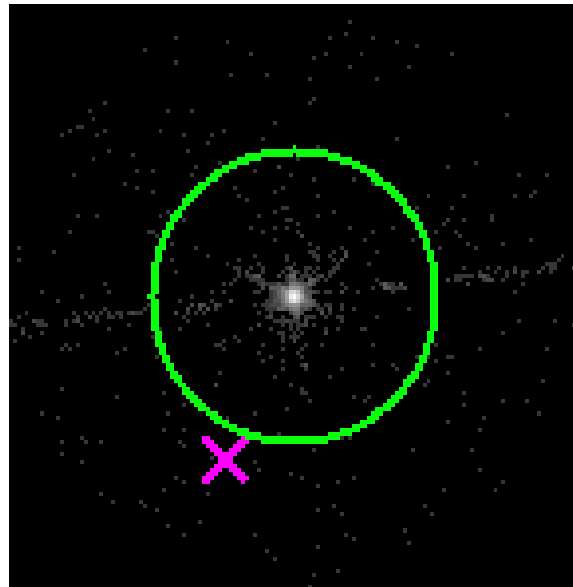


2.5.3 Slot 2

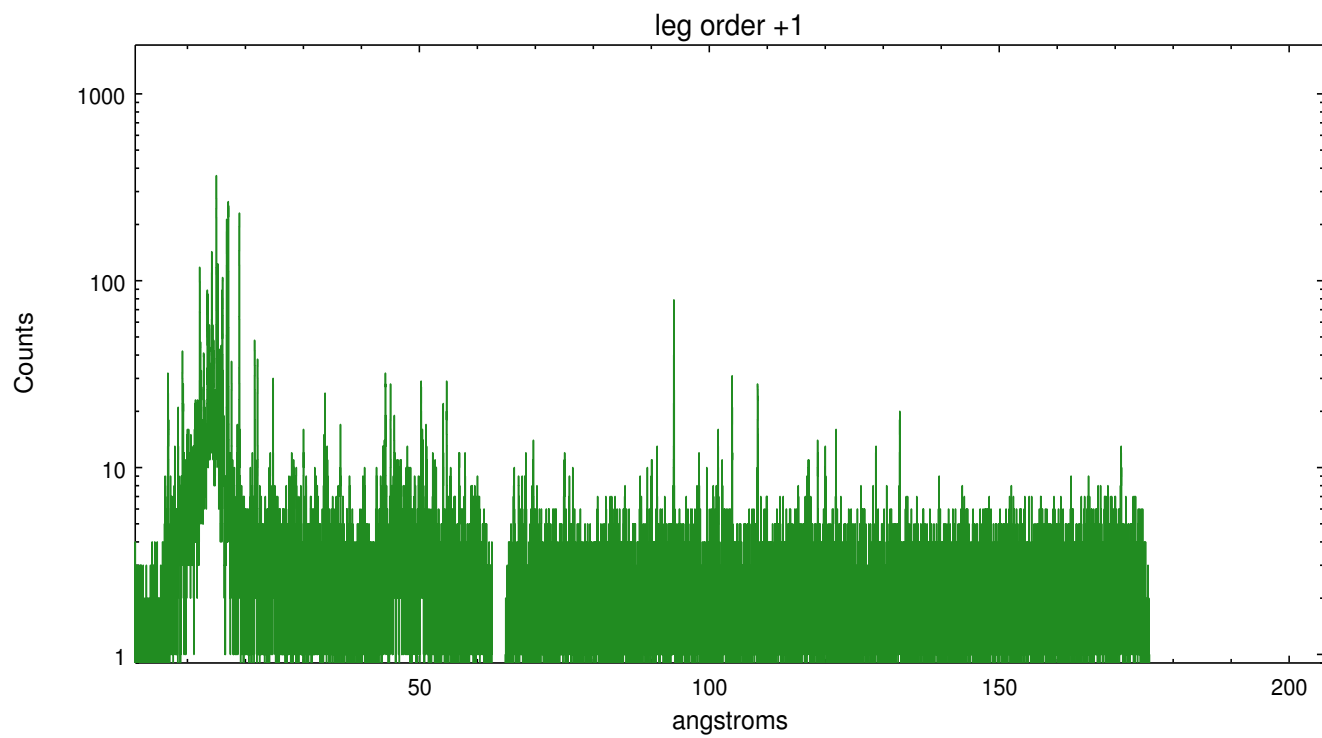
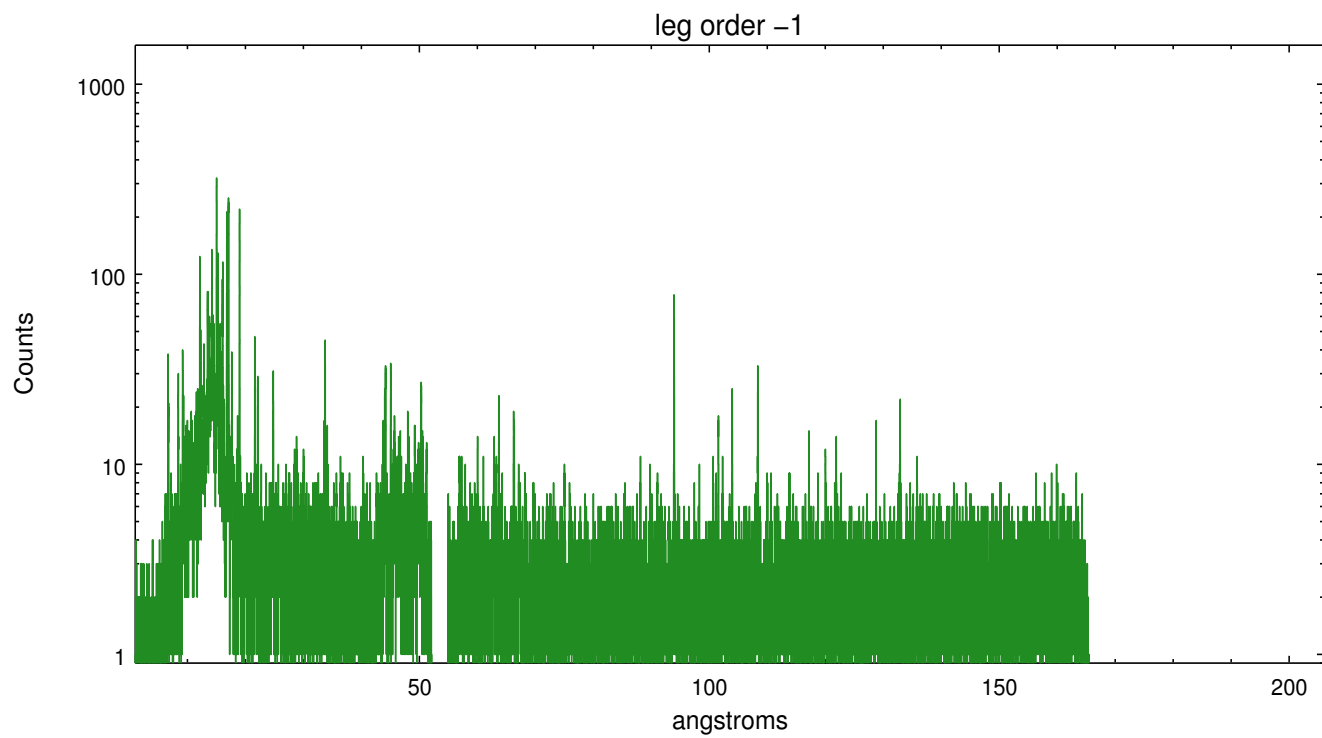


3 Gratings

3.1 LETG Arm



LETG Zero Order



A Summary

A.1 Status

V&V Scientist	Joy Nichols
V&V Date (YYYY-MM-DD)	2012.09.28
V&V Edition	1
V&V Disposition and Status	OK
V&V Charge Time	26.974

A.2 Comments