

V&V Reference Report

L2 ASCDS Version : 8.4.5

Observation 11249 - L2 Version 2
Chandra X-Ray Center

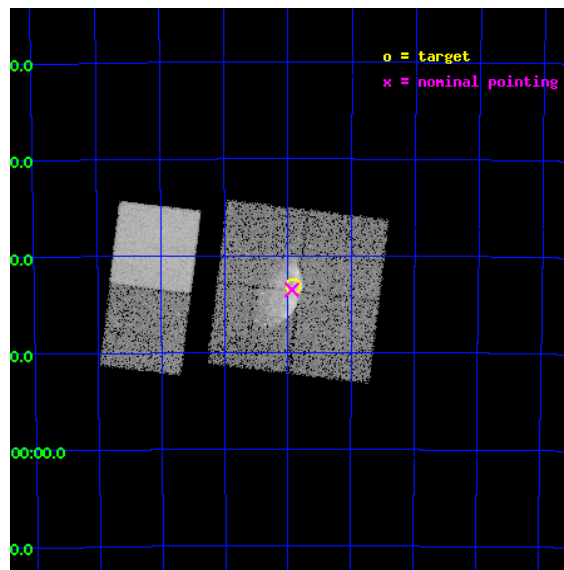
L2 Processing Date : Jun 29 2012

Contents

1	Front	2
2	OBI	3
2.1	OBI	3
2.1.1	Images	3
2.1.2	Bias	3
2.1.3	Parameters	4
2.1.4	Events	4
2.2	Compared Parameters	5
2.3	Aspect	6
2.4	Star Slots	9
2.4.1	Slot 3	9
2.4.2	Slot 4	10
2.4.3	Slot 5	11
2.4.4	Slot 6	12
2.4.5	Slot 7	13
2.5	FID Slots	14
2.5.1	Slot 0	14
2.5.2	Slot 1	15
2.5.3	Slot 2	16
A	Summary	17
A.1	Status	17
A.2	Comments	17

1 Front

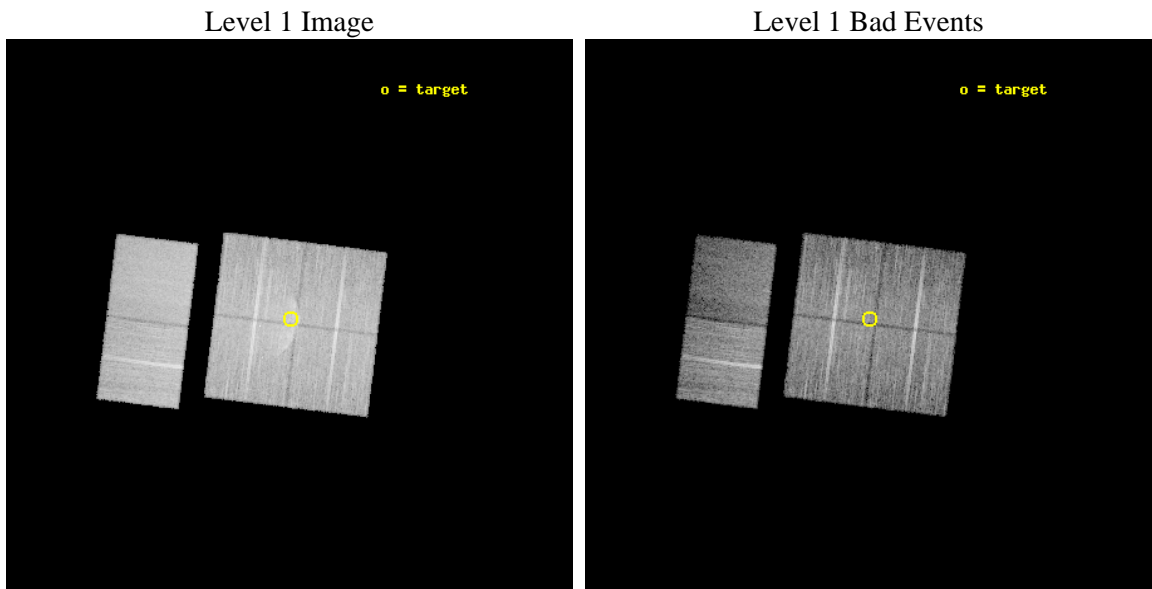
seq_num	501334	Sequence number
obs_id	11249	Observation id
title	Confirming and exploring the supernova remnant candidate G308.3-1.4	
observer	Dr. Chung Yue Hui	Principal investigator
object	G308.3-1.4	Source name
dtcycle	0	
cycle	P	events from which exps? Prim/Second/Both
ra_targ	205.227083	Observer's specified target RA [deg]
dec_targ	-63.718333	Observer's specified target Dec [deg]
ra_nom	205.23461381608	Nominal RA [deg]
dec_nom	-63.72572296358	Nominal Dec [deg]
roll_nom	277.0034325938	Nominal Roll [deg]
revision	2	Processing version of data
ontime	15045.348646522	Sum of GTIs [s]
livetime	14854.835382738	Livetime [s]
ontime0	15045.225526512	Sum of GTIs [s]
ontime1	15045.266566515	Sum of GTIs [s]
ontime2	15045.307606518	Sum of GTIs [s]
ontime3	15045.348646522	Sum of GTIs [s]
ontime6	15045.430726528	Sum of GTIs [s]
ontime7	15045.389686525	Sum of GTIs [s]
l2events	113668	Number of level 2 events



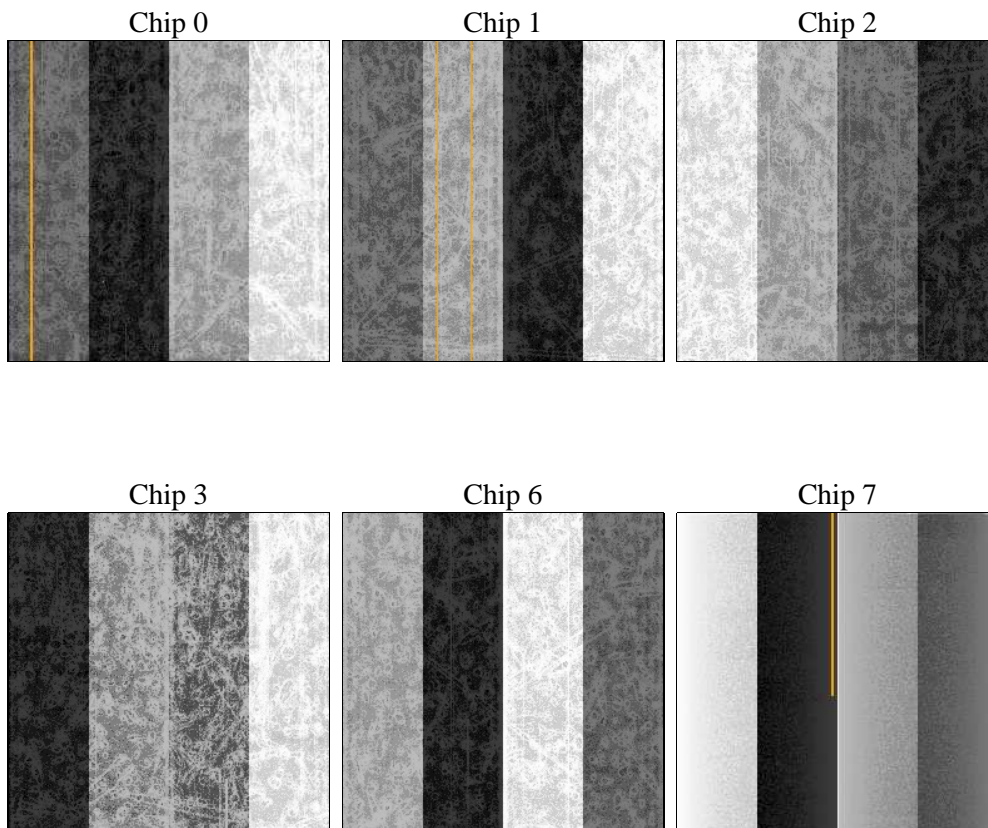
2 OBI

2.1 OBI

2.1.1 Images



2.1.2 Bias



2.1.3 Parameters

obi_num	1	Obi number	sched_exp_time	15000.000000	[s] Scheduled observation exposure time
ascdsver	8.4.5	Processing system revision	ontime	15045.348646522	Sum of GTIs [s]
caldsver	4.5.0	 	ontime0	15045.225526512	Sum of GTIs [s]
date	2012-06-29T09:48:50	Date and time of file creation	ontime1	15045.266566515	Sum of GTIs [s]
revision	2	Processing version of data	ontime2	15045.307606518	Sum of GTIs [s]
			ontime3	15045.348646522	Sum of GTIs [s]
			ontime6	15045.430726528	Sum of GTIs [s]
			ontime7	15045.389686525	Sum of GTIs [s]
			l1events	636615	Number of level 1 events

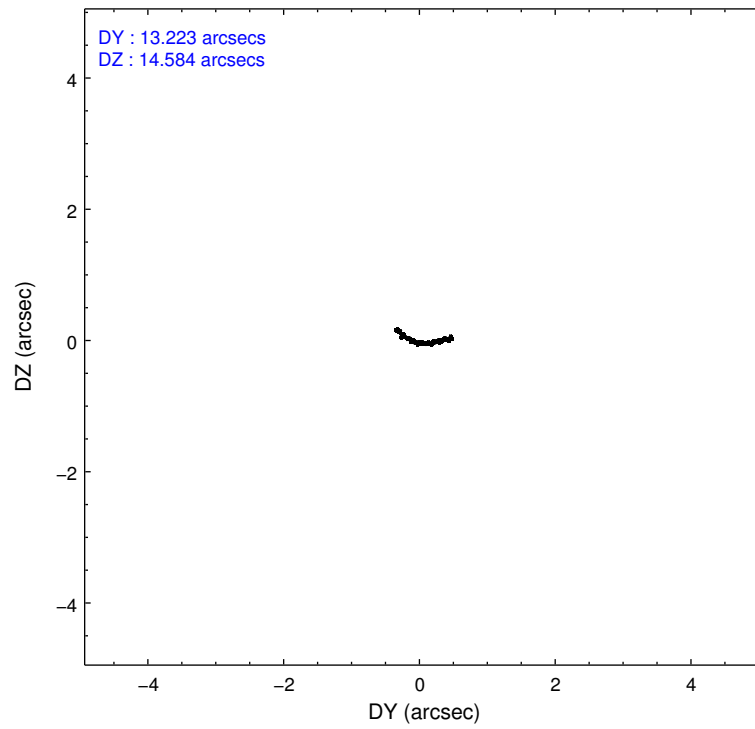
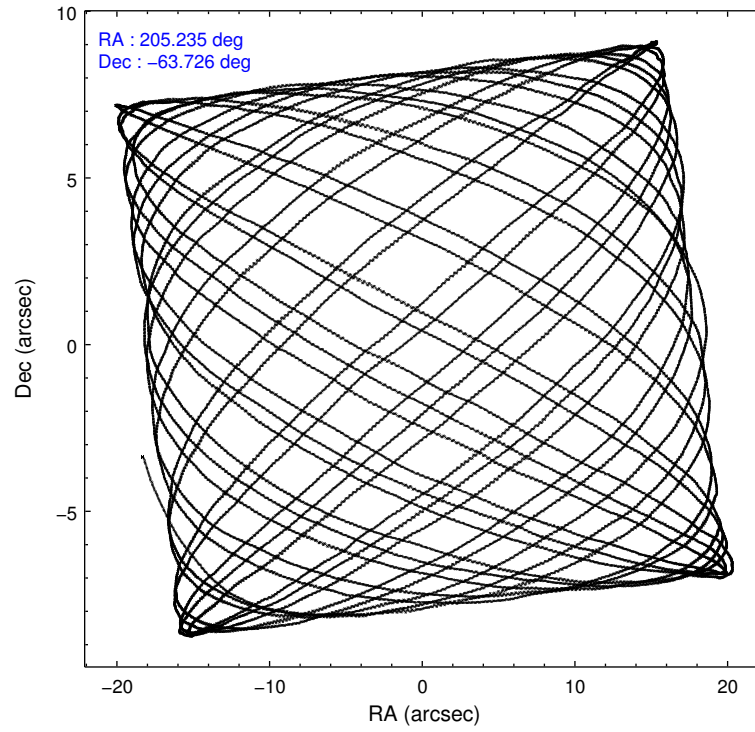
2.1.4 Events

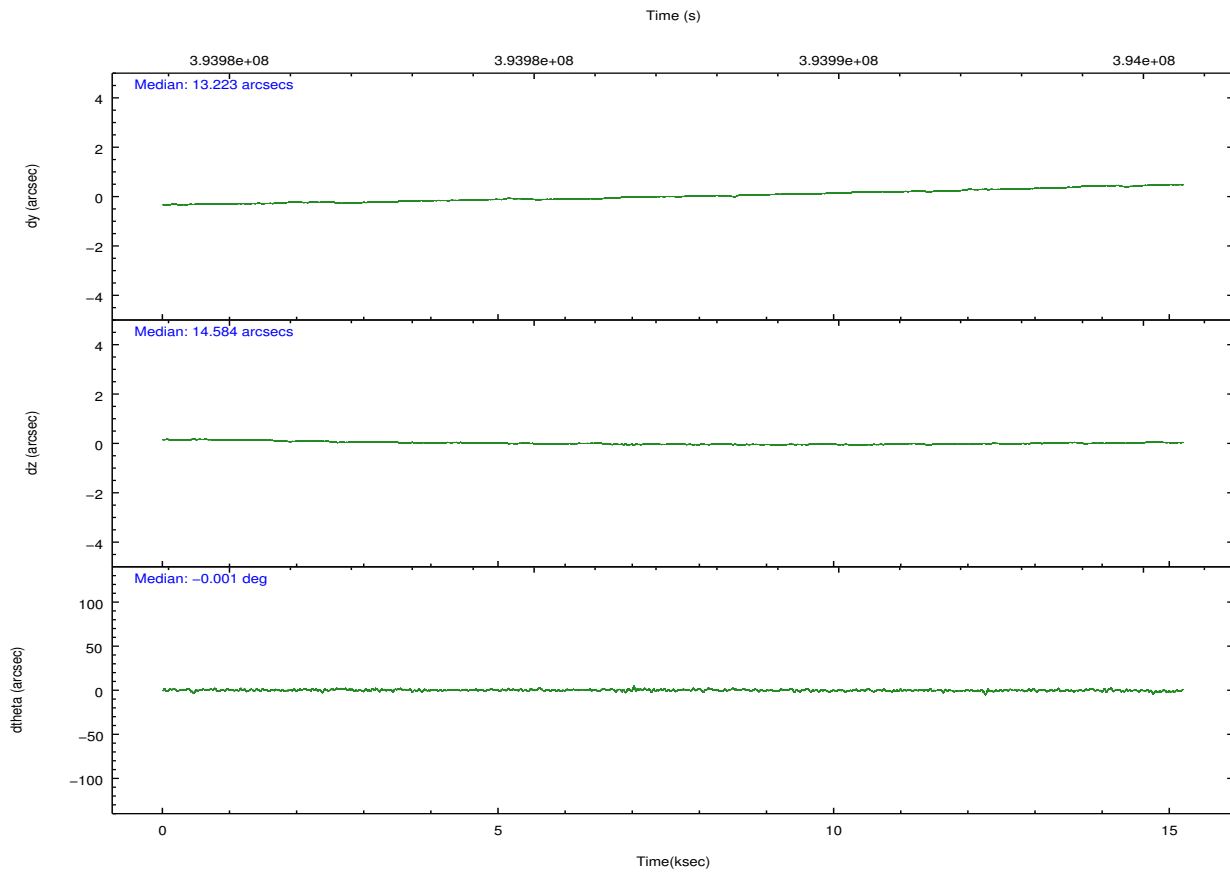
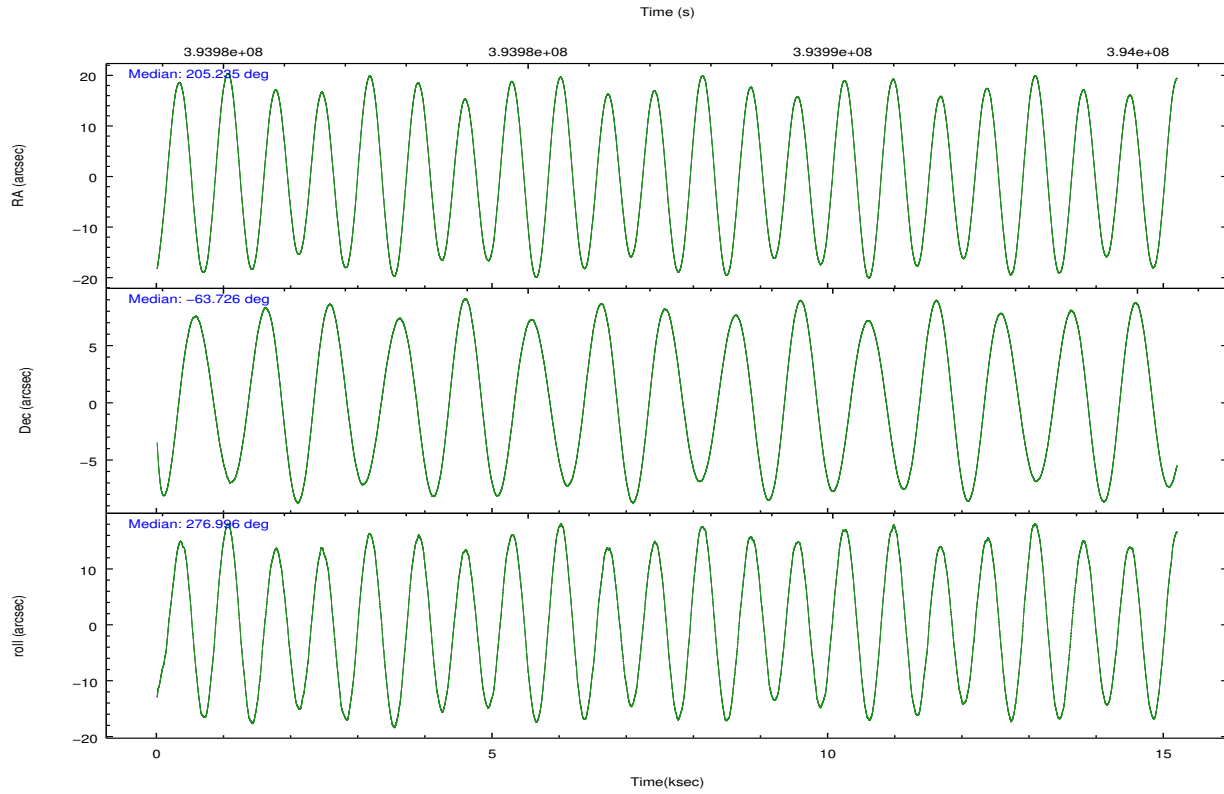
	ccd 0	ccd 1	ccd 2	ccd 3	ccd 6	ccd 7		ccd 0	ccd 1	ccd 2	ccd 3	ccd 6	ccd 7
level 1 events	98413	95099	114052	109282	111462	108307	grade 0 events	5091	5360	11399	8699	4342	5373
rejected events	86004	82010	94671	93225	99508	55392		5%	5%	9%	7%	3%	4%
rejected %	87%	86%	83%	85%	89%	51%	grade 1 events	75	73	109	95	67	177
								0%	0%	0%	0%	0%	0%
							grade 2 events	2832	2706	3330	2788	2715	11273
								2%	2%	2%	2%	2%	10%
							grade 3 events	1215	1332	1312	1292	1192	4777
								1%	1%	1%	1%	1%	4%
							grade 4 events	1186	1290	1326	1257	1223	5032
								1%	1%	1%	1%	1%	4%
							grade 5 events	3351	3801	3197	3965	4008	11649
								3%	3%	2%	3%	3%	10%
							grade 6 events	2088	2407	2020	2028	2486	26493
								2%	2%	1%	1%	2%	24%
							grade 7 events	82575	78130	91359	89158	95429	43533
								83%	82%	80%	81%	85%	40%

2.2 Compared Parameters

Parameter	Planned	Actual	Parameter	Planned	Actual
Instrument	ACIS	ACIS	Obspar format version number	7	7
Detector	ACIS-012367	ACIS-012367	Obspar file type	PREDICTED	ACTUAL
Grating	NONE	NONE	Obspar update status	NONE	UPDATED
Data mode	VFAINT	VFAINT	CCD I0 on	Y	Y
Observation mode	POINTING	POINTING	CCD I1 on	Y	Y
[deg] Pointing RA	205.197028	205.2346138160796	CCD I2 on	Y	Y
[deg] Pointing Dec	-63.703804	-63.72572296357978	CCD I3 on	Y	Y
[deg] Pointing Roll	276.761045	277.0034325937957	CCD S0 on	N	N
[mm] SIM focus pos	-0.782348	-0.7809083437167272	CCD S1 on	N	N
[mm] SIM defocus	0	0.001439871863259334	CCD S2 on	O2	Y
[mm] SIM translation stage pos	-233.592463	-233.5874344608287	CCD S3 on	O1	Y
[mm] SIM translation stage offset	0	-0.005018542100998502	CCD S4 on	N	N
[s] Observation start time (MET)	393979883.184000	393978368.75066	CCD S5 on	N	N
Observation start date	2010-06-26T22:50:17	2010-06-26T22:26:08	Number of optional ACIS chips dropped	0	0
[s] Observation end time (MET)	393994883.184000	393995369.40153	On-chip summing requested	N	N
Observation end date	2010-06-27T03:00:17	2010-06-27T03:09:29	Subarray requested	NONE	NONE
Read mode	TIMED	TIMED	Alternating exposures requested	N	N
			[s] Primary exposure time	0.000000	3.2

2.3 Aspect



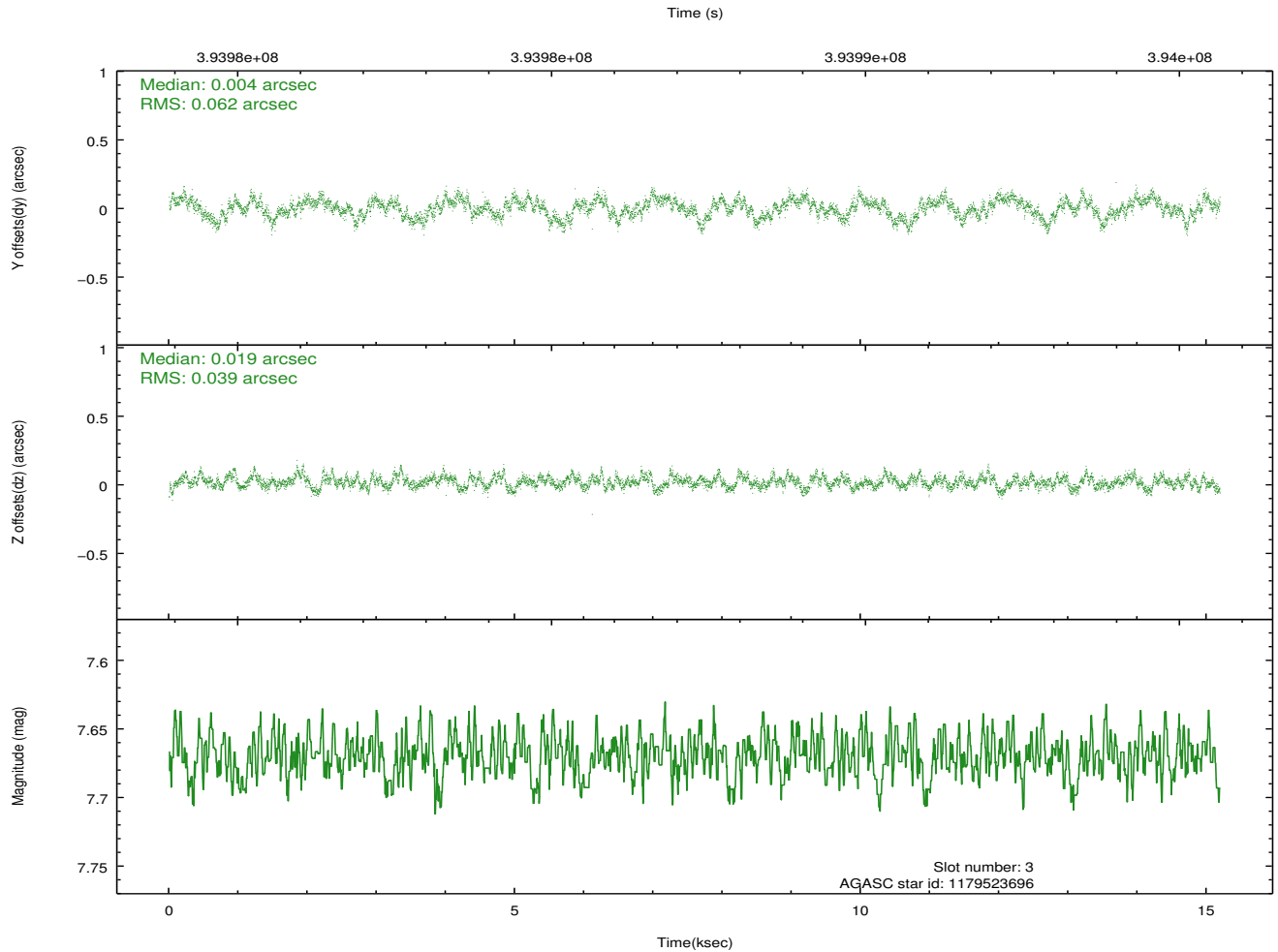
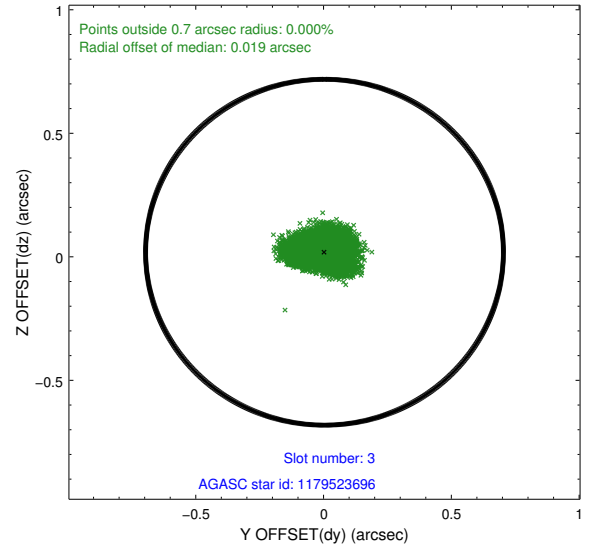
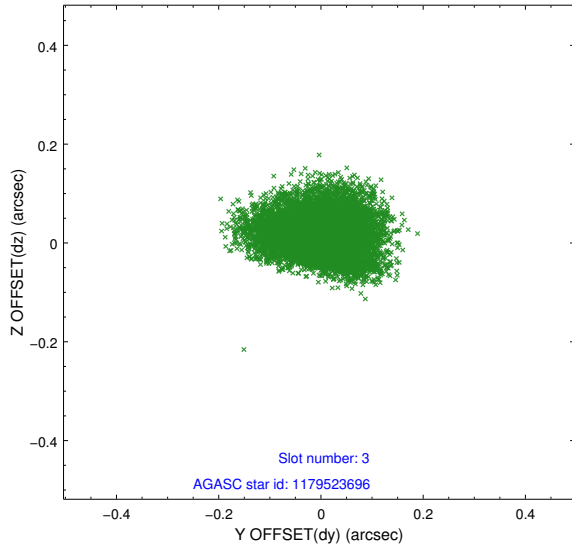


Slot Statistics

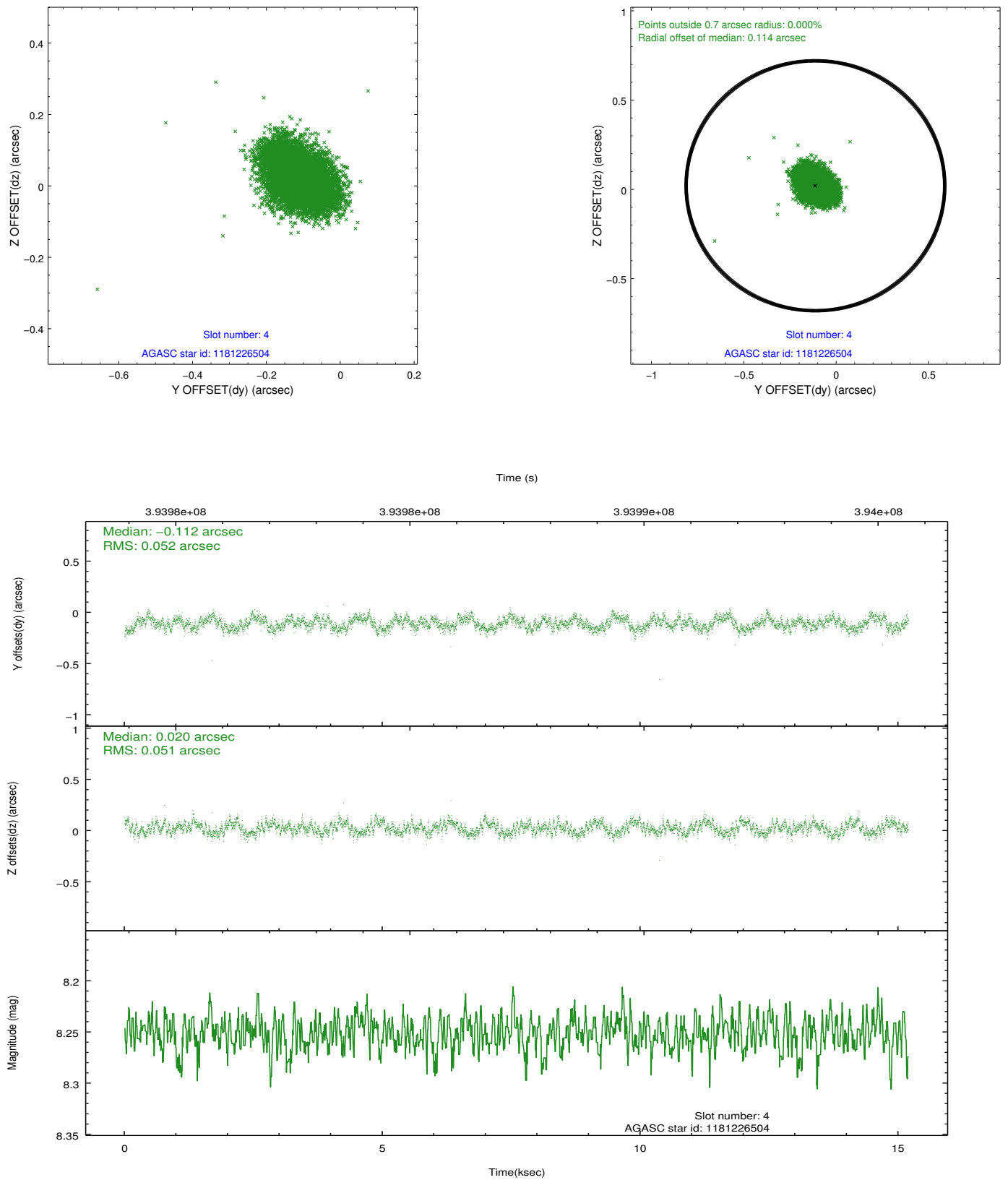
slot	status	id	mag	n_pts	med_dy	med_dz	dr1	dr2	ra	dec	mean_y	mean_z
0	FID	ACIS-I-1	7.03	3706	-0.044	0.050	0.012	0.020	0.000000	0.000000	926.20	-838.15
1	FID	ACIS-I-2	6.95	3706	-0.176	-0.093	0.011	0.018	0.000000	0.000000	-767.85	-844.86
2	FID	ACIS-I-4	6.94	3706	0.121	0.109	0.007	0.013	0.000000	0.000000	2146.14	1061.55
3	GUIDE	1179523696	7.67	7410	0.004	0.019	0.078	0.127	204.287705	-64.120466	1331.84	-1596.51
4	GUIDE	1181226504	8.25	7412	-0.112	0.020	0.077	0.122	206.278719	-63.753591	395.30	1686.82
5	GUIDE	1179031432	7.81	7409	-0.006	0.002	0.067	0.102	204.427399	-63.480978	-934.49	-1134.81
6	GUIDE	1180731320	8.72	7411	0.012	-0.050	0.081	0.132	206.551030	-63.663652	133.55	2161.41
7	GUIDE	1181227624	9.13	7403	0.106	0.008	0.086	0.140	206.523351	-64.251040	2222.05	1825.93

2.4 Star Slots

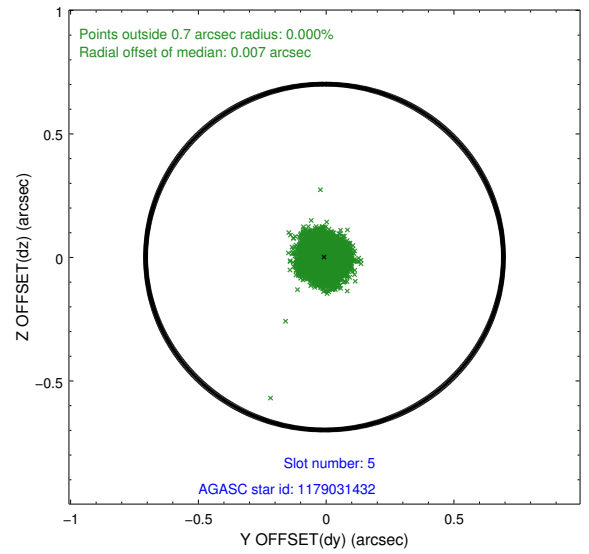
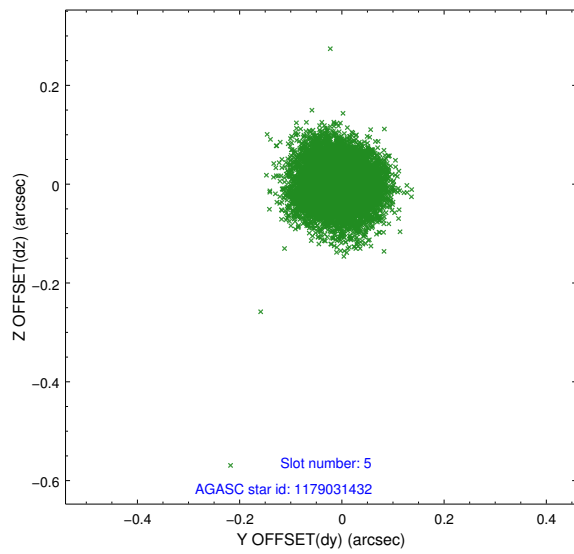
2.4.1 Slot 3



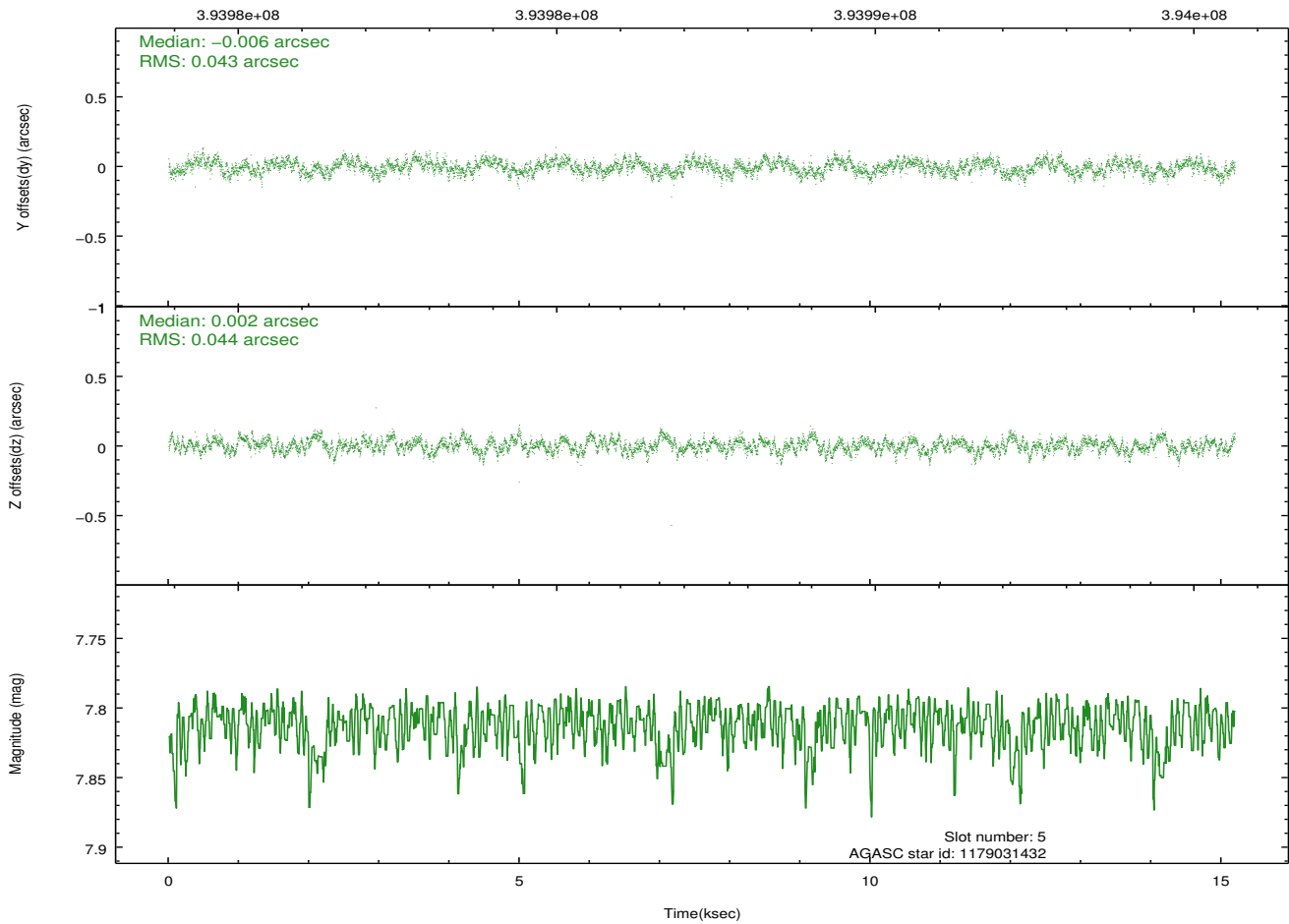
2.4.2 Slot 4



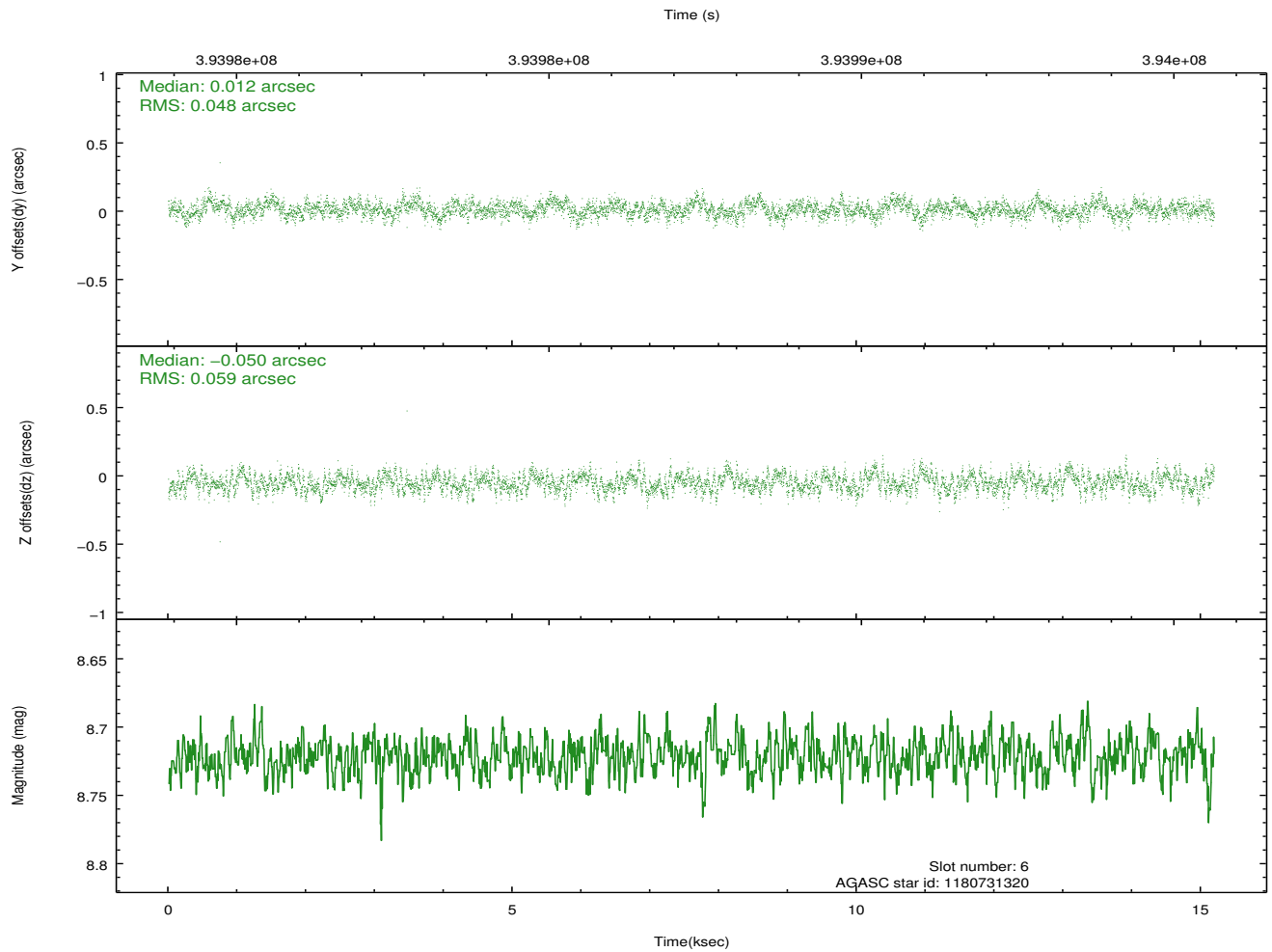
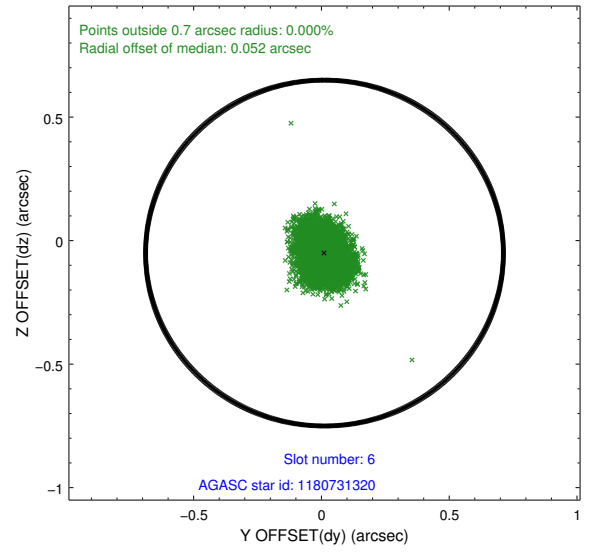
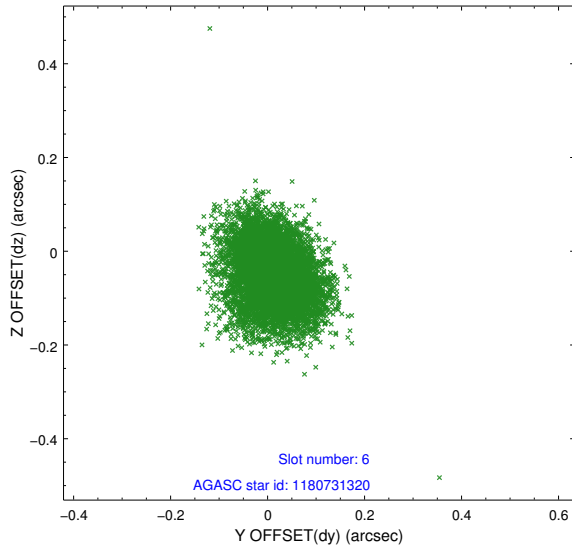
2.4.3 Slot 5



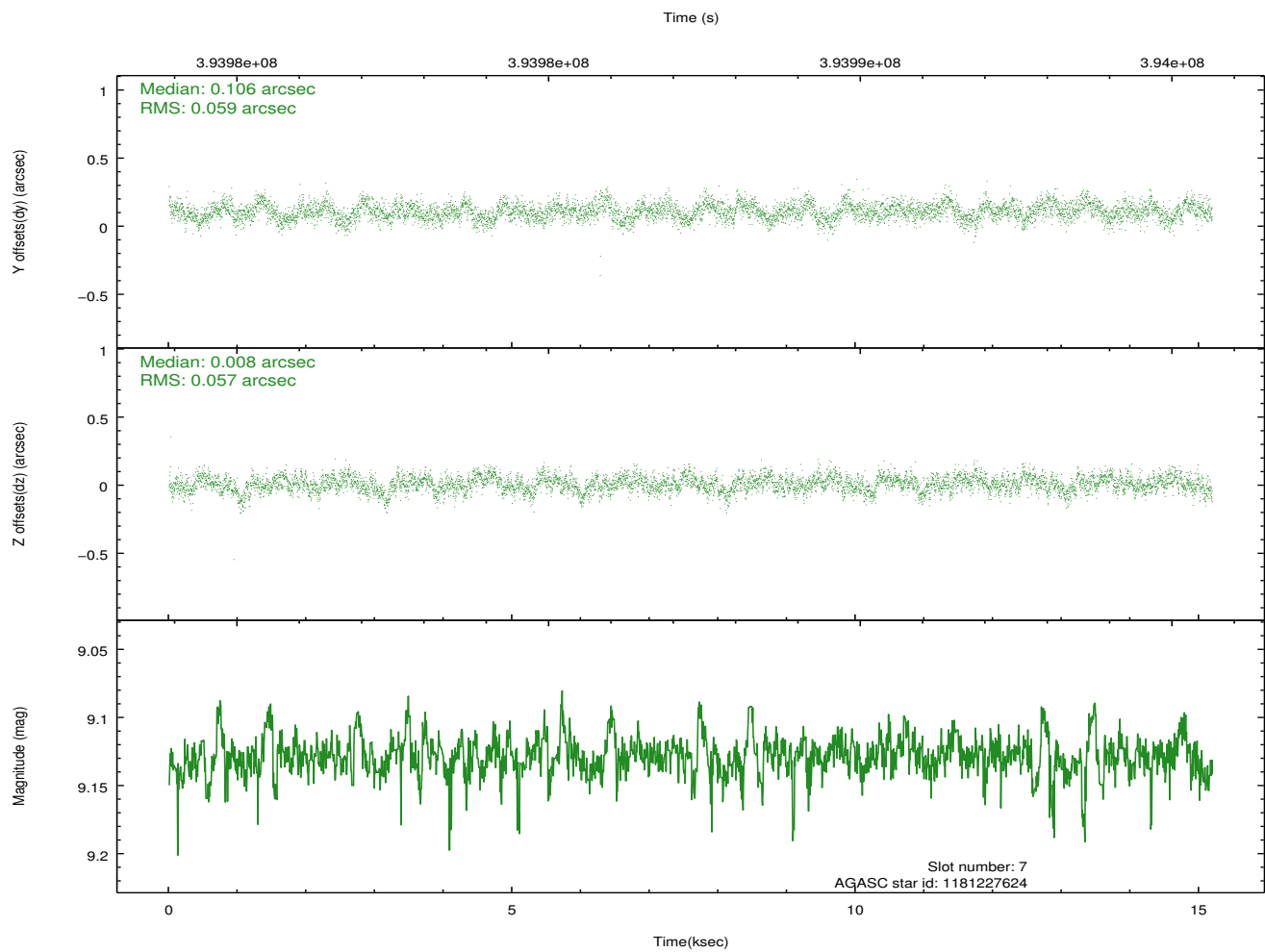
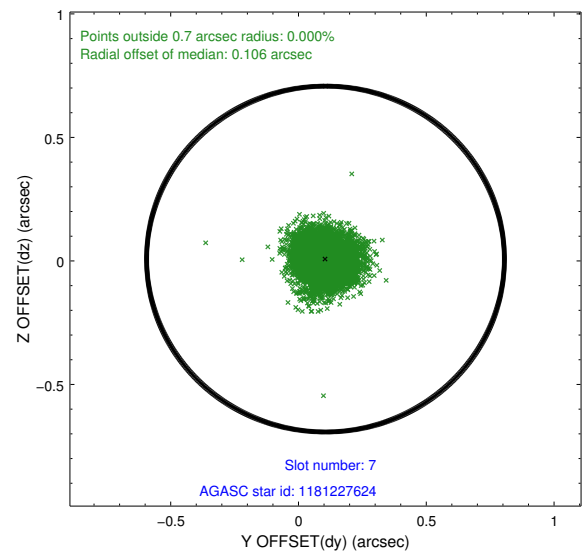
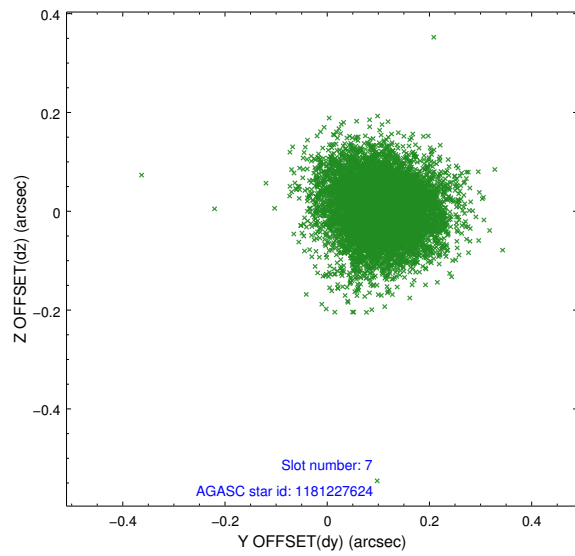
Time (s)



2.4.4 Slot 6

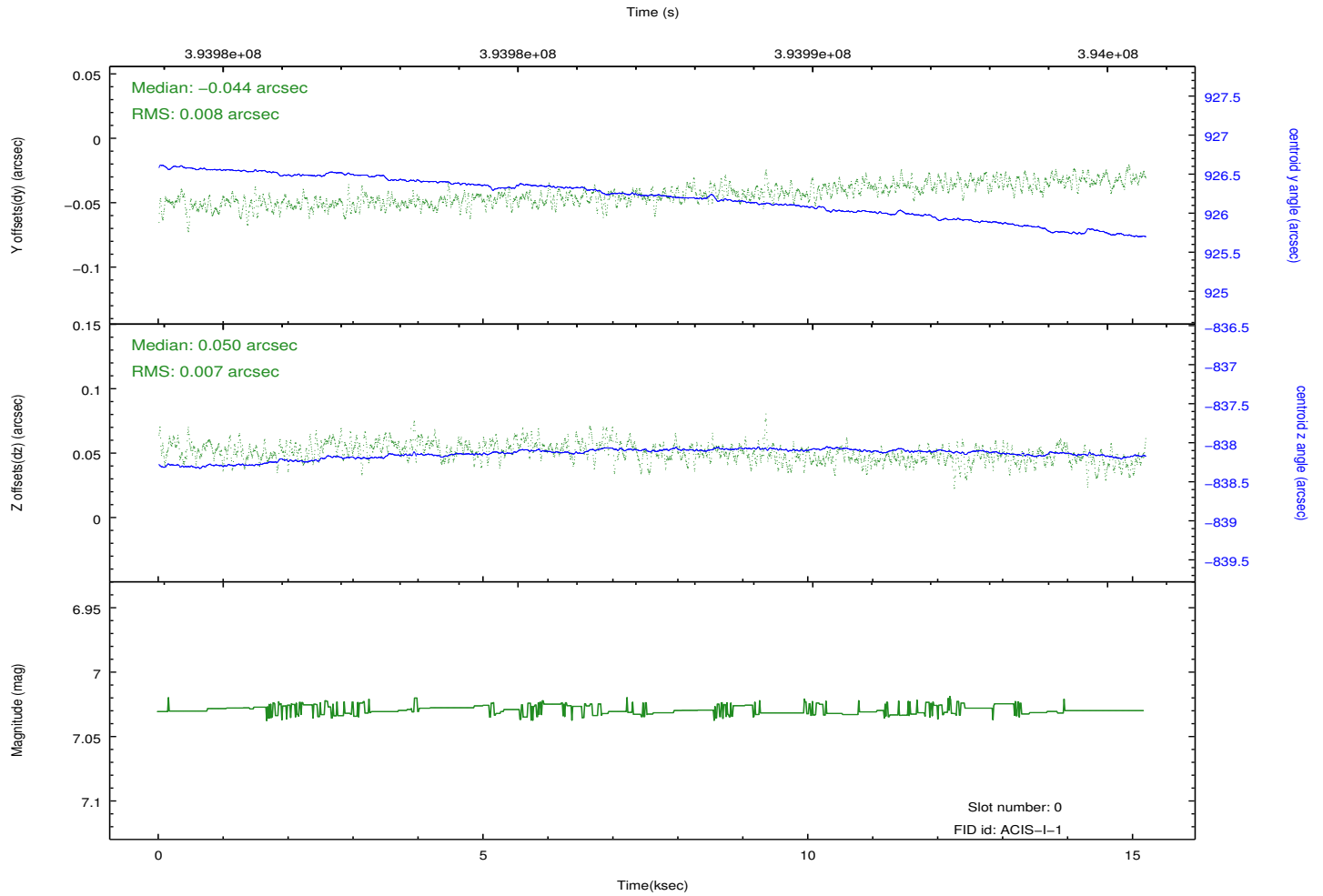
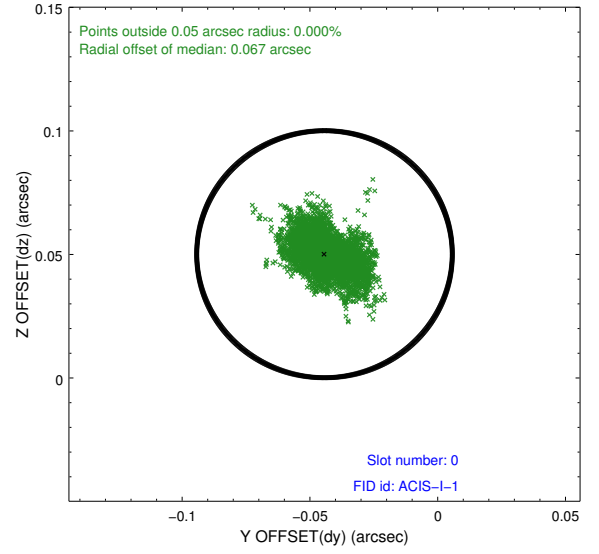
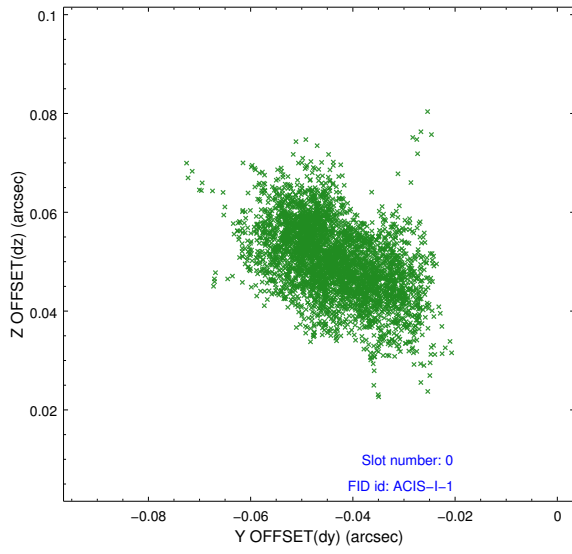


2.4.5 Slot 7

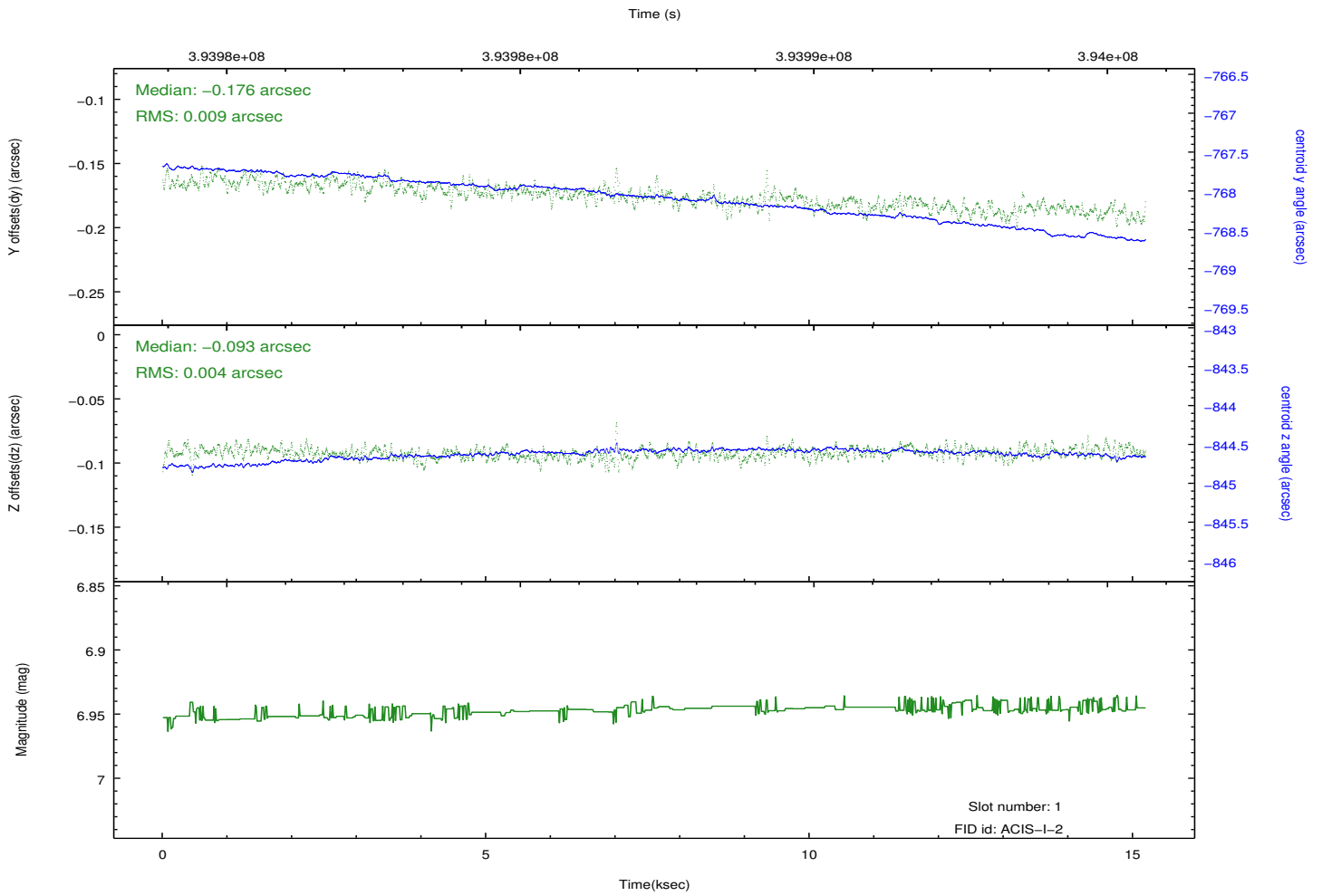
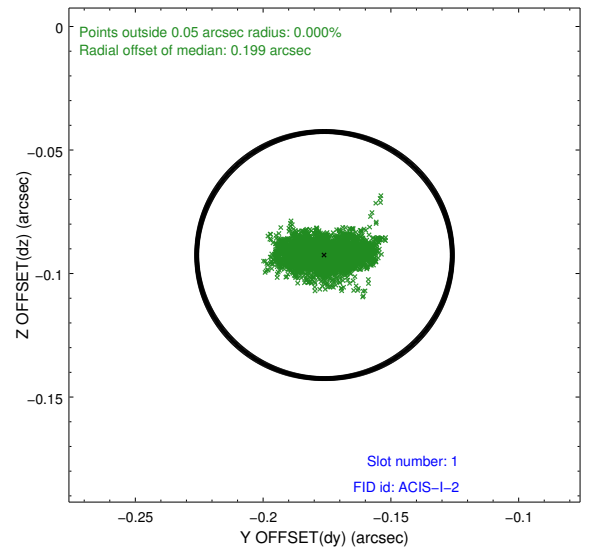
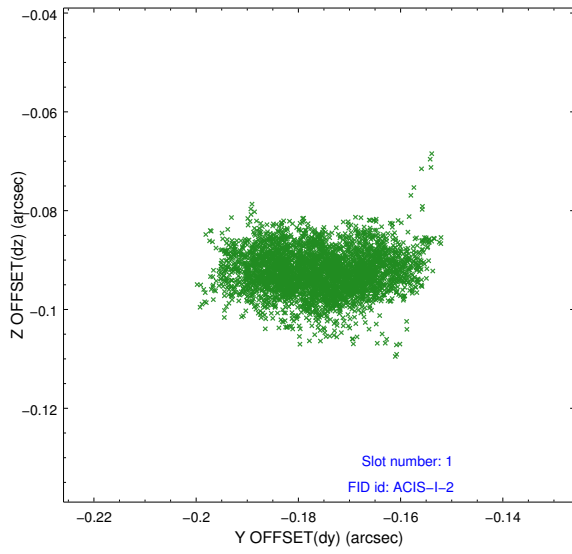


2.5 FID Slots

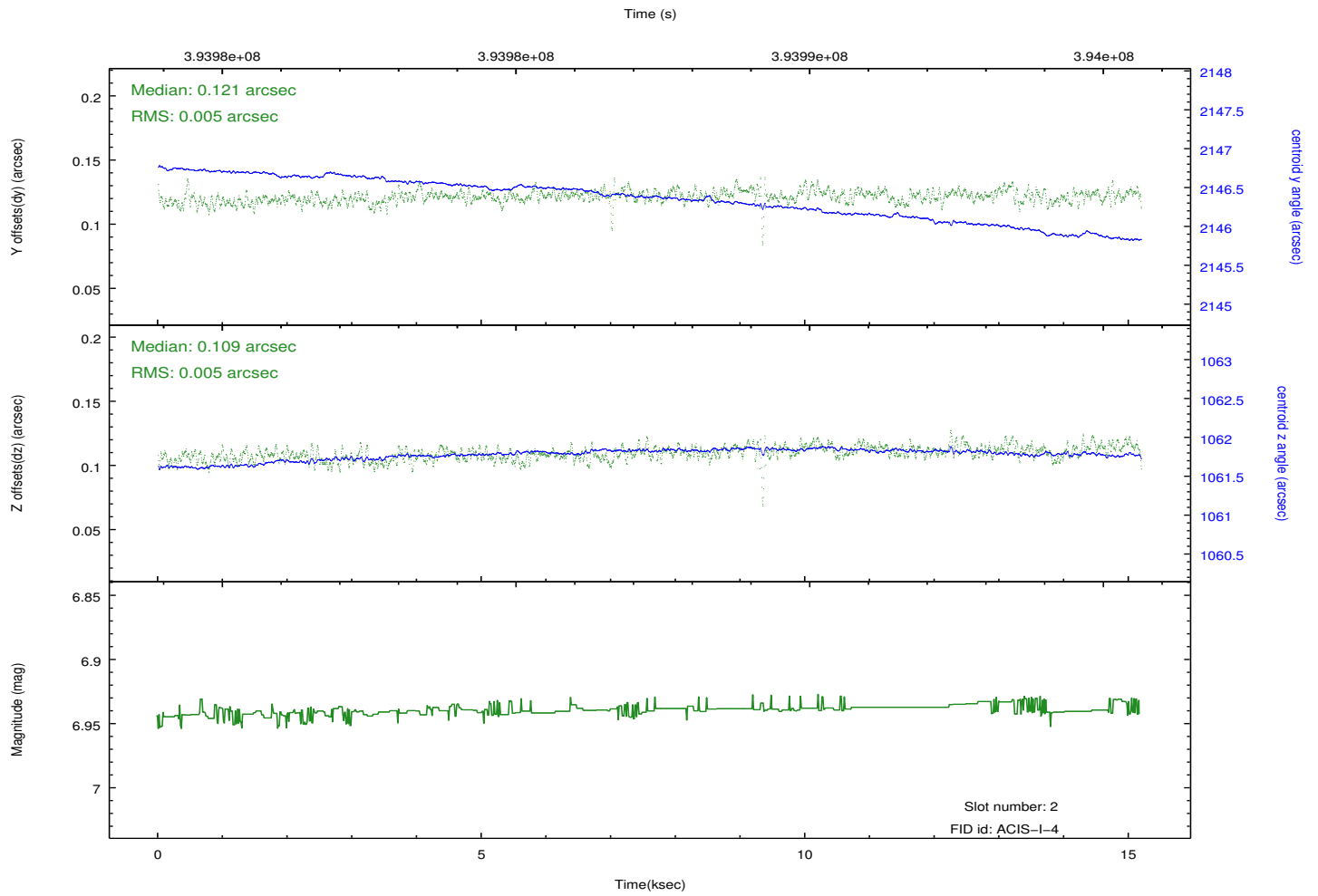
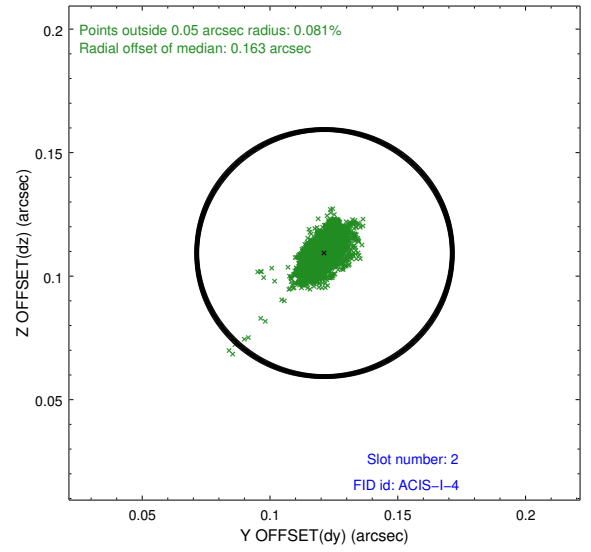
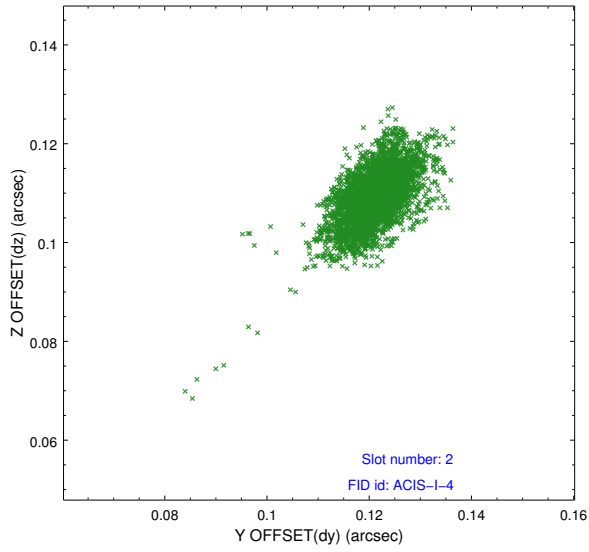
2.5.1 Slot 0



2.5.2 Slot 1



2.5.3 Slot 2



A Summary

A.1 Status

V&V Scientist	Jen Lauer
V&V Date (YYYY-MM-DD)	2012.07.06
V&V Edition	1
V&V Disposition and Status	OK
V&V Charge Time	15.045348638952

A.2 Comments