

V&V Reference Report

L2 ASCDS Version : 8.4.5

Observation 11709 - L2 Version 2
Chandra X-Ray Center

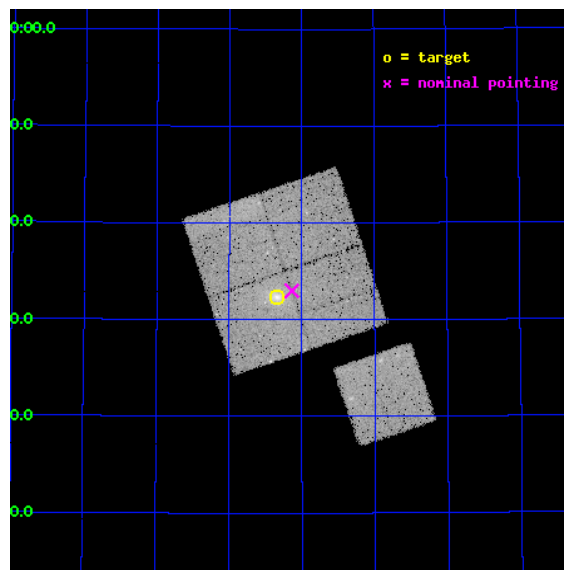
L2 Processing Date : Jul 8 2012

Contents

1	Front	2
2	OBI	3
2.1	OBI	3
2.1.1	Images	3
2.1.2	Bias	3
2.1.3	Parameters	4
2.1.4	Events	4
2.2	Compared Parameters	5
2.3	Aspect	6
2.4	Star Slots	9
2.4.1	Slot 3	9
2.4.2	Slot 4	10
2.4.3	Slot 5	11
2.4.4	Slot 6	12
2.4.5	Slot 7	13
2.5	FID Slots	14
2.5.1	Slot 0	14
2.5.2	Slot 1	15
2.5.3	Slot 2	16
A	Summary	17
A.1	Status	17
A.2	Comments	17

1 Front

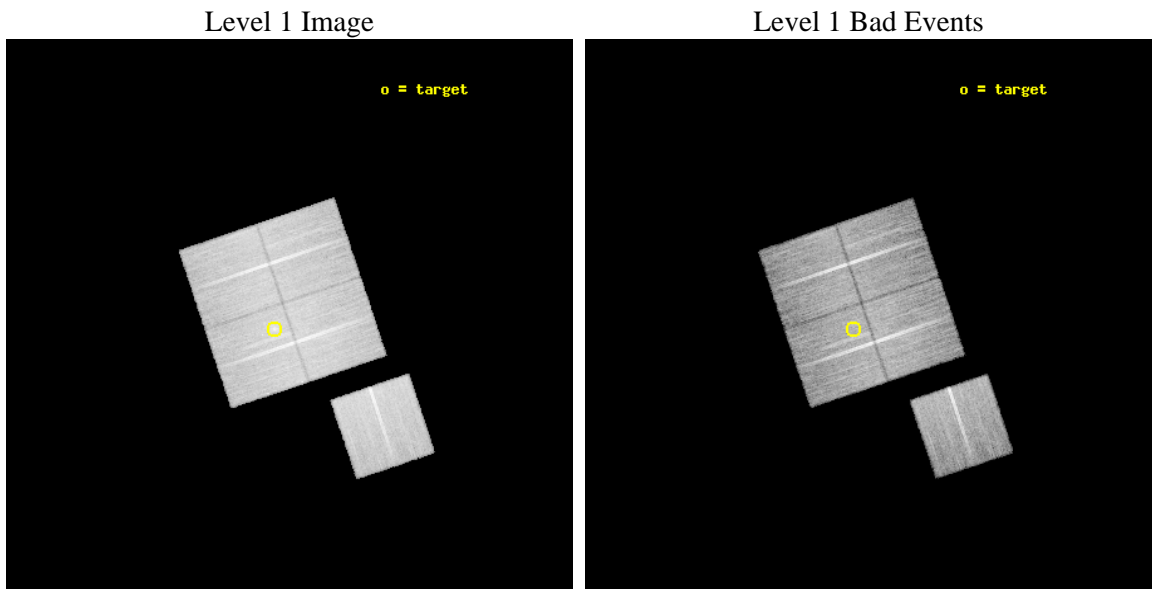
seq_num	800851	Sequence number
obs_id	11709	Observation id
title	The distribution and interactions of luminous and dark matter in strong-lensing clusters at $z > 0.3$	Proposal title
observer	Dr. Harald Ebeling	Principal investigator
object	MACSJ0712.3+5931	Source name
dtcycle	0	
cycle	P	events from which exps? Prim/Second/Both
ra_targ	108.085	Observer's specified target RA [deg]
dec_targ	59.539167	Observer's specified target Dec [deg]
ra_nom	108.03436733207	Nominal RA [deg]
dec_nom	59.549753054227	Nominal Dec [deg]
roll_nom	161.39327105221	Nominal Roll [deg]
revision	2	Processing version of data
ontime	26049.300200343	Sum of GTIs [s]
livetime	25708.94691601	Livetime [s]
ontime0	26036.736218929	Sum of GTIs [s]
ontime1	26046.159210145	Sum of GTIs [s]
ontime2	26046.159230053	Sum of GTIs [s]
ontime3	26049.300200343	Sum of GTIs [s]
ontime6	26046.159190118	Sum of GTIs [s]
l2events	90560	Number of level 2 events



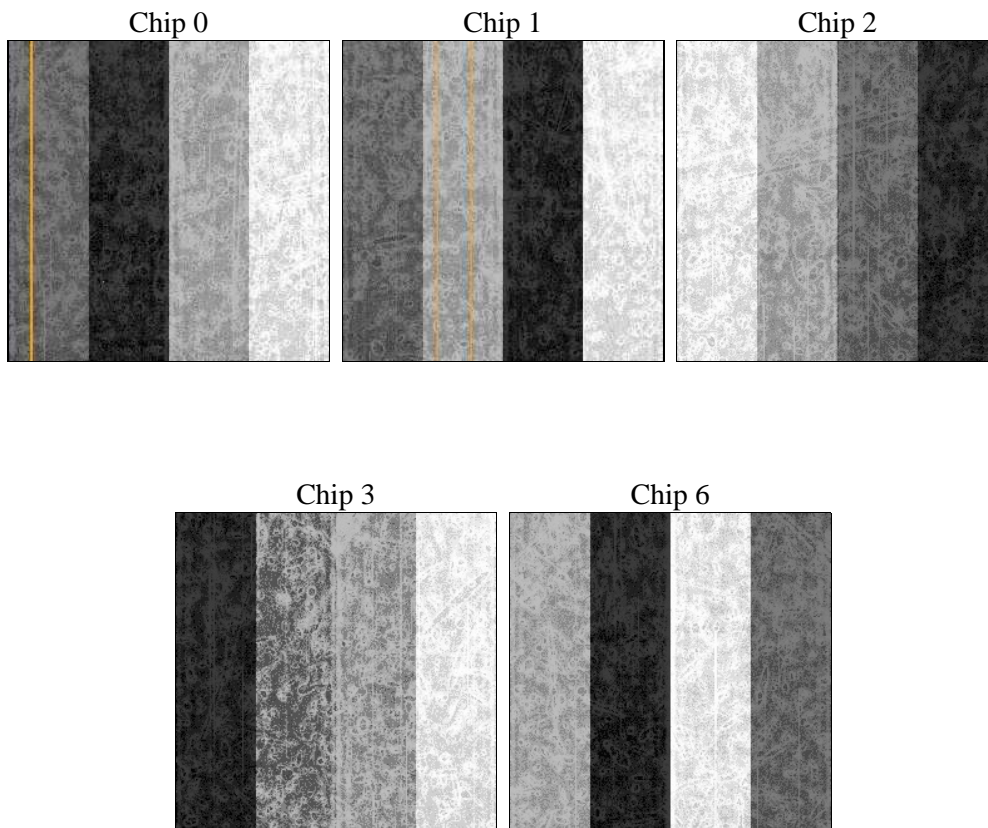
2 OBI

2.1 OBI

2.1.1 Images



2.1.2 Bias



2.1.3 Parameters

obi_num	0	Obi number	sched_exp_time	26000.000000	[s] Scheduled observation exposure time
ascdsver	8.4.5	Processing system revision	ontime	26049.300200343	Sum of GTIs [s]
caldbver	4.5.0	 	ontime0	26036.736218929	Sum of GTIs [s]
date	2012-07-08T21:16:42	Date and time of file creation	ontime1	26046.159210145	Sum of GTIs [s]
revision	2	Processing version of data	ontime2	26046.159230053	Sum of GTIs [s]
			ontime3	26049.300200343	Sum of GTIs [s]
			ontime6	26046.159190118	Sum of GTIs [s]
			l1events	894772	Number of level 1 events

2.1.4 Events

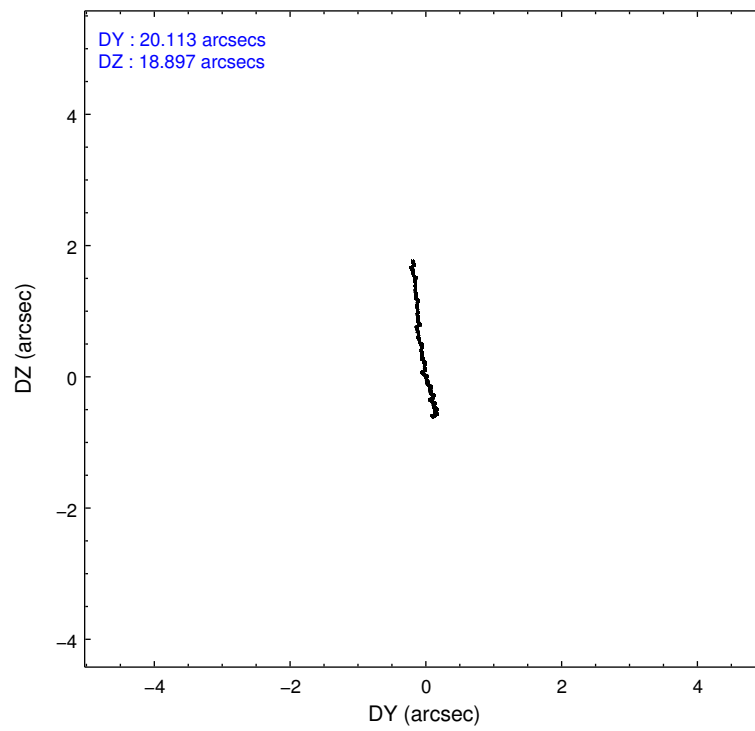
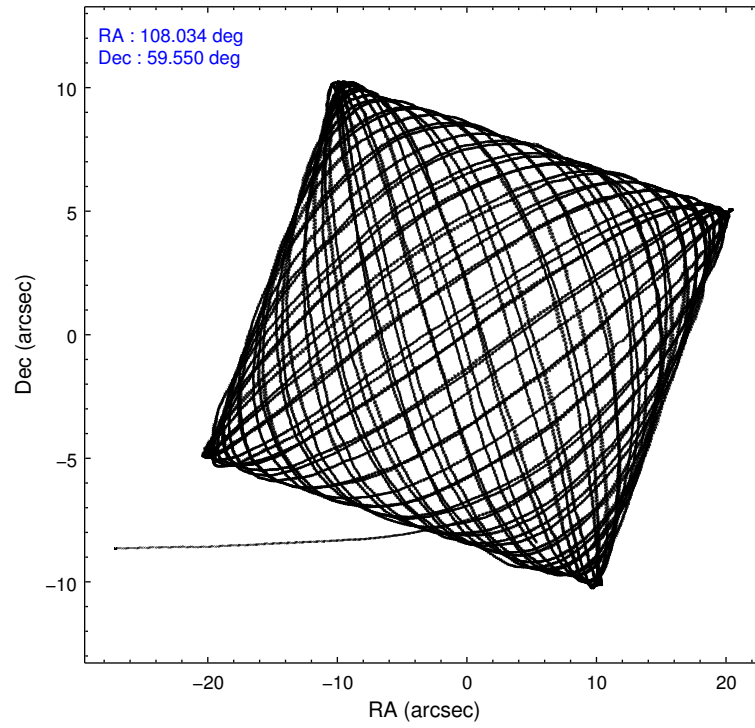
	ccd 0	ccd 1	ccd 2	ccd 3	ccd 6
level 1 events	167259	172061	188370	184697	182385
rejected events	147125	149389	168315	161230	161533
rejected %	87%	86%	89%	87%	88%

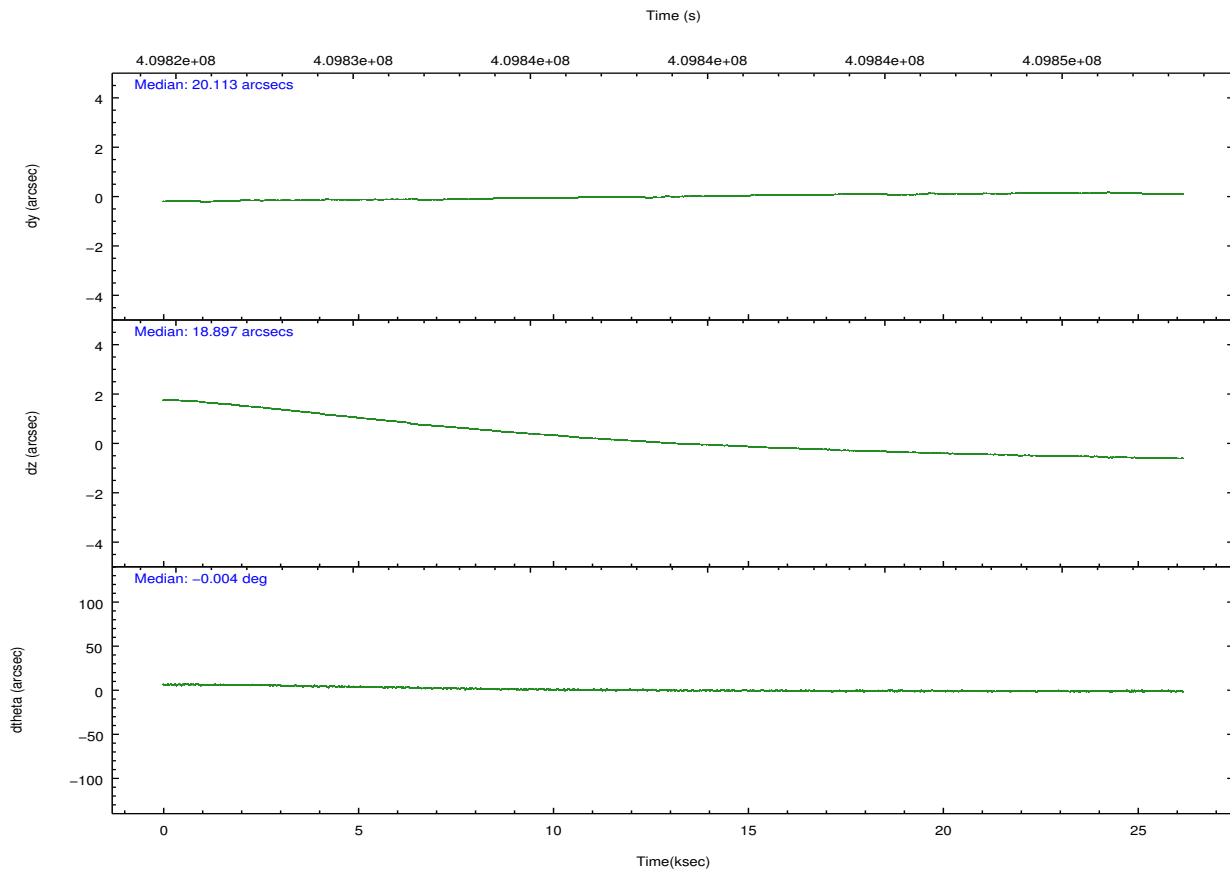
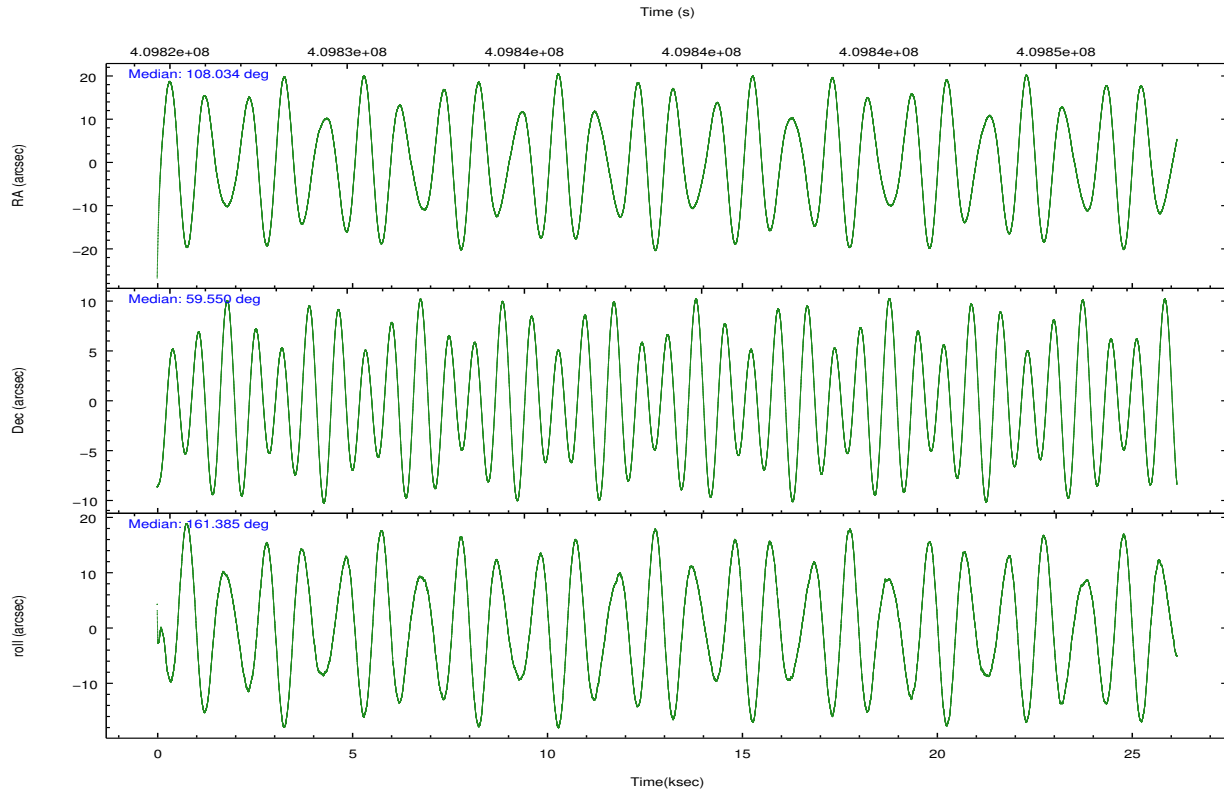
	ccd 0	ccd 1	ccd 2	ccd 3	ccd 6
grade 0 events	6831	8111	7039	10265	7349
	4%	4%	3%	5%	4%
grade 1 events	108	122	113	124	98
	0%	0%	0%	0%	0%
grade 2 events	4946	5316	4884	4616	4735
	2%	3%	2%	2%	2%
grade 3 events	2231	2279	2143	2195	2111
	1%	1%	1%	1%	1%
grade 4 events	2064	2276	2077	2177	2071
	1%	1%	1%	1%	1%
grade 5 events	7772	8370	7460	8650	8491
	4%	4%	3%	4%	4%
grade 6 events	4064	4692	3913	4216	4591
	2%	2%	2%	2%	2%
grade 7 events	139243	140895	160741	152454	152939
	83%	81%	85%	82%	83%

2.2 Compared Parameters

Parameter	Planned	Actual	Parameter	Planned	Actual
Instrument	ACIS	ACIS	Obspar format version number	7	7
Detector	ACIS-01236	ACIS-01236	Obspar file type	PREDICTED	ACTUAL
Grating	NONE	NONE	Obspar update status	NONE	UPDATED
Data mode	VFAINT	VFAINT	Number of optional ACIS chips dropped	0	0
Observation mode	POINTING	POINTING	On-chip summing requested	N	N
[deg] Pointing RA	108.087524	108.034367332065	Subarray requested	NONE	NONE
[deg] Pointing Dec	59.555296	59.54975305422658	Alternating exposures requested	N	N
[deg] Pointing Roll	161.138766	161.393271052207	[s] Primary exposure time	0.000000	3.1
[mm] SIM focus pos	-0.782348	-0.7809083437167272			
[mm] SIM defocus	0	0.001439871863259334			
[mm] SIM translation stage pos	-229.442463	-229.4438428438578			
[mm] SIM translation stage offset	-4.15	-4.148610159071865			
[s] Observation start time (MET)	409826097.184000	409824923.37681			
Observation start date	2010-12-27T08:33:51	2010-12-27T08:15:23			
[s] Observation end time (MET)	409852097.184000	409852680.37824			
Observation end date	2010-12-27T15:47:11	2010-12-27T15:58:00			
Read mode	TIMED	TIMED			

2.3 Aspect



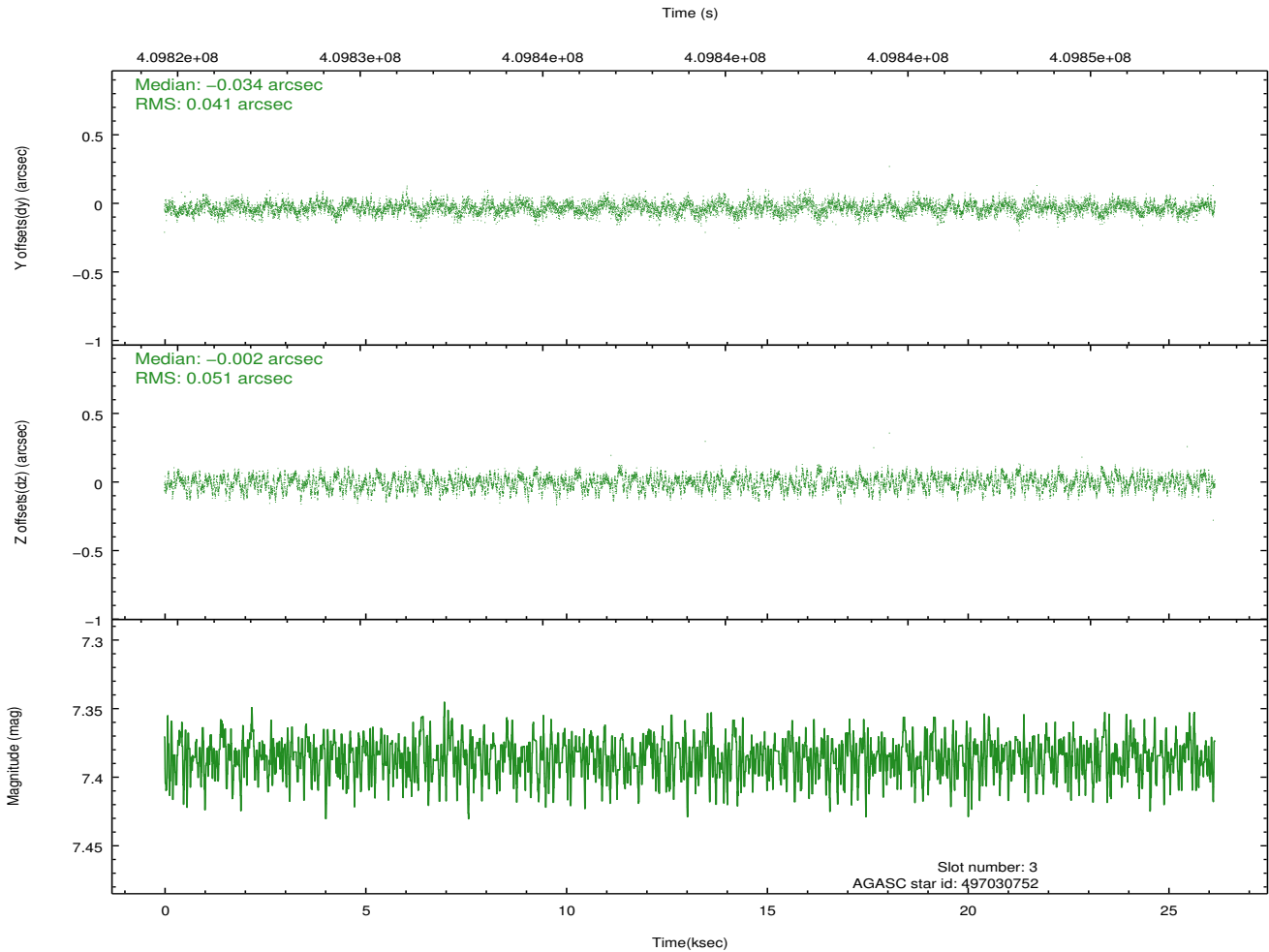
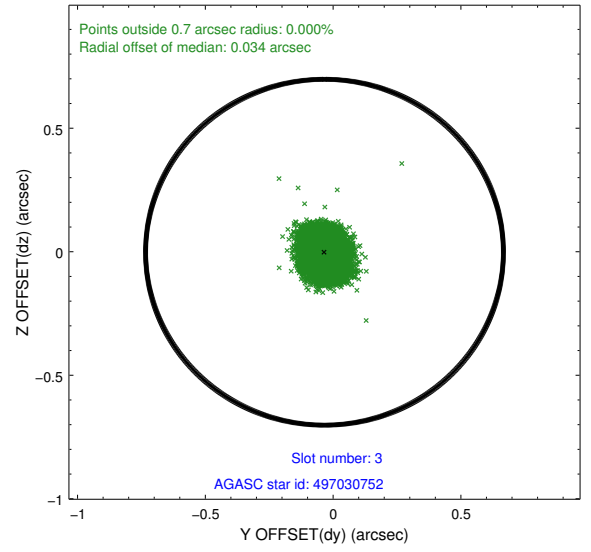
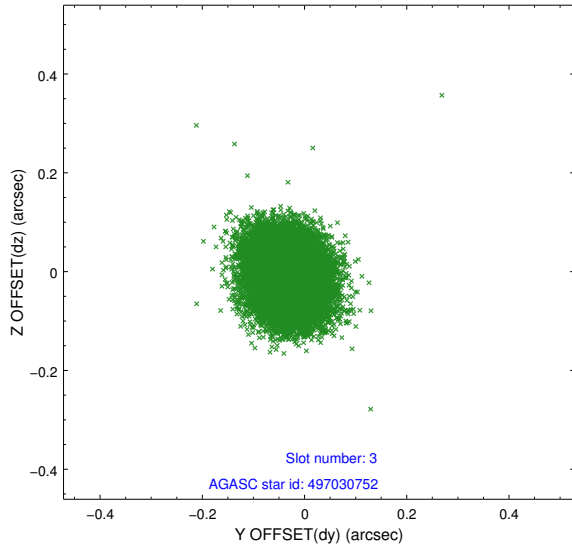


Slot Statistics

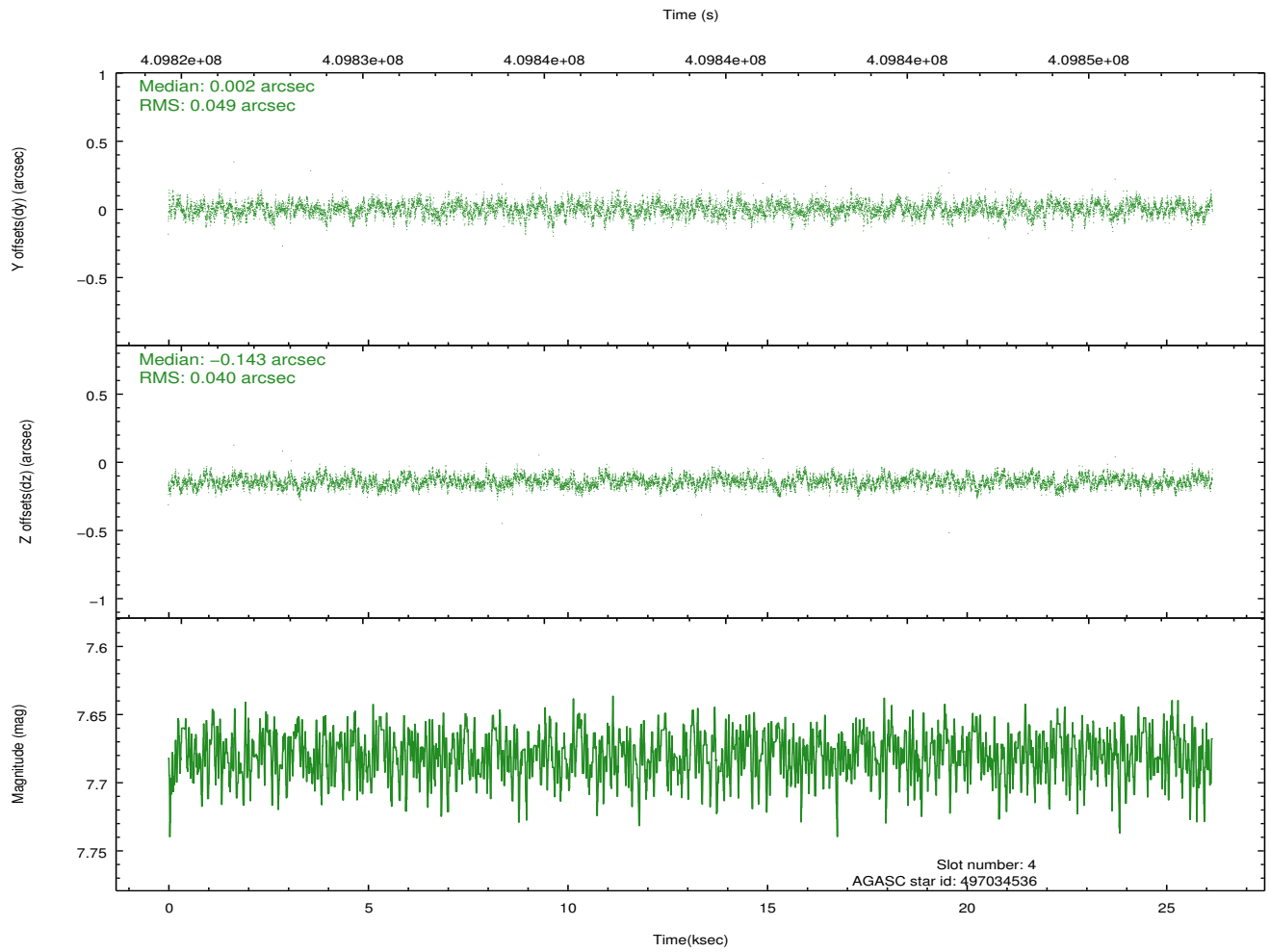
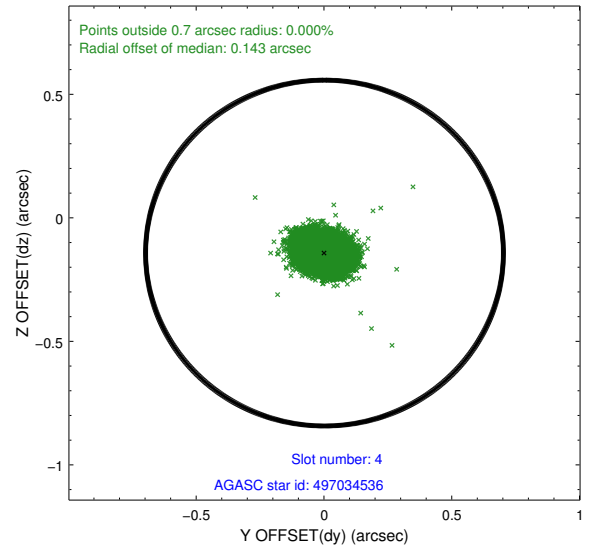
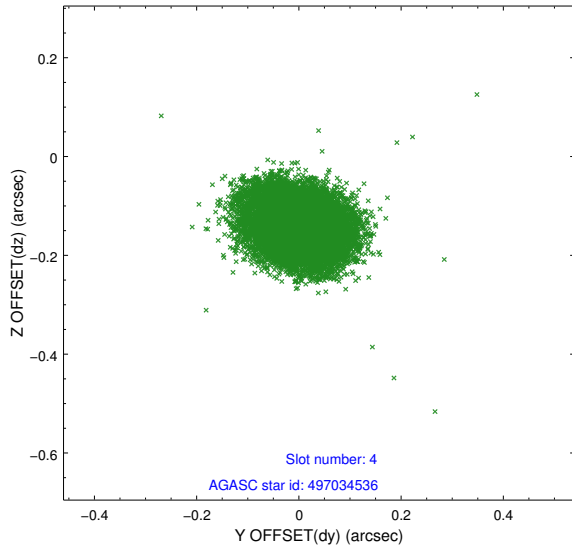
slot	status	id	mag	n_pts	med_dy	med_dz	dr1	dr2	ra	dec	mean_y	mean_z
0	FID	ACIS-I-1	7.05	6381	0.065	-0.002	0.021	0.054	0.000000	0.000000	919.22	-927.95
1	FID	ACIS-I-5	7.03	6379	-0.273	0.057	0.009	0.027	0.000000	0.000000	-1829.21	969.48
2	FID	ACIS-I-6	7.04	6381	0.116	0.019	0.019	0.032	0.000000	0.000000	384.63	1614.11
3	GUIDE	497030752	7.38	12760	-0.034	-0.002	0.070	0.110	107.813687	59.064573	-91.28	1834.71
4	GUIDE	497034536	7.68	12762	0.002	-0.143	0.066	0.110	107.734592	59.369688	396.97	840.41
5	GUIDE	497041032	7.09	12760	0.110	-0.028	0.078	0.122	108.884323	59.774934	-1107.51	-1222.84
6	GUIDE	497042448	9.31	12742	0.028	-0.143	0.096	0.153	106.881944	59.224816	1723.09	1824.72
7	GUIDE	538840456	7.19	12760	-0.110	0.314	0.063	0.105	107.869322	60.224771	1149.06	-2154.46

2.4 Star Slots

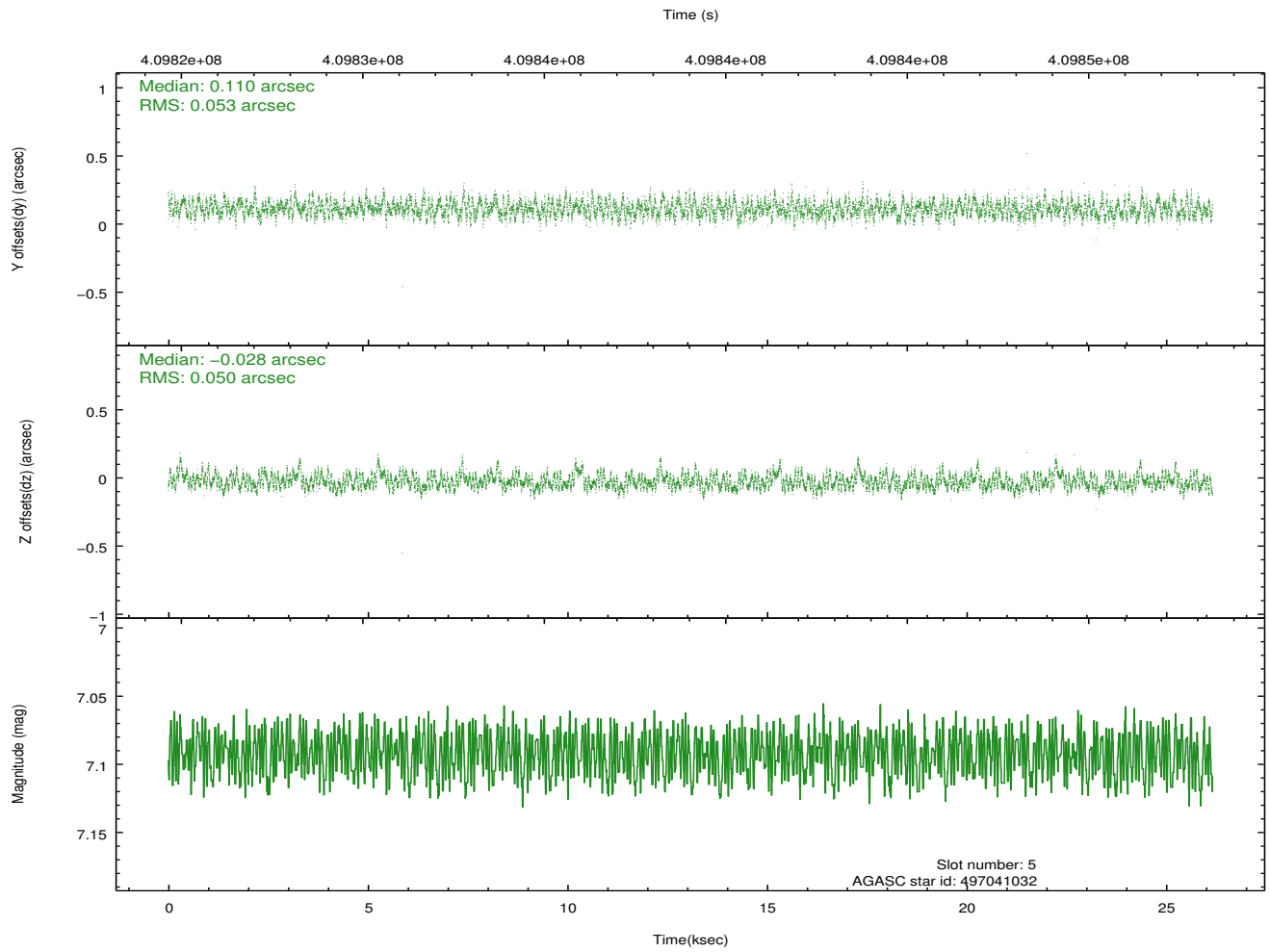
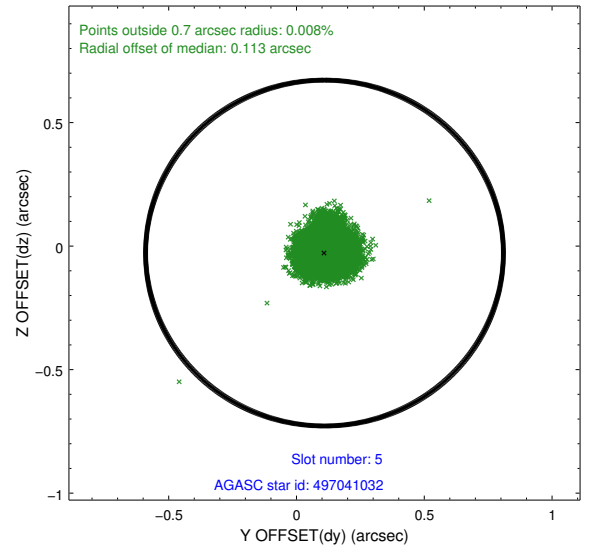
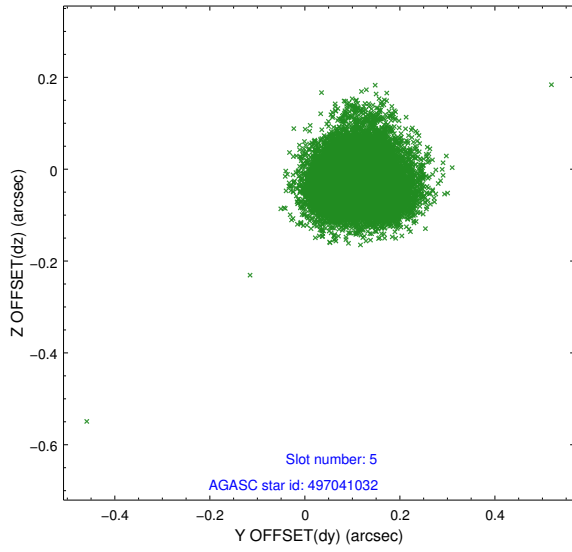
2.4.1 Slot 3



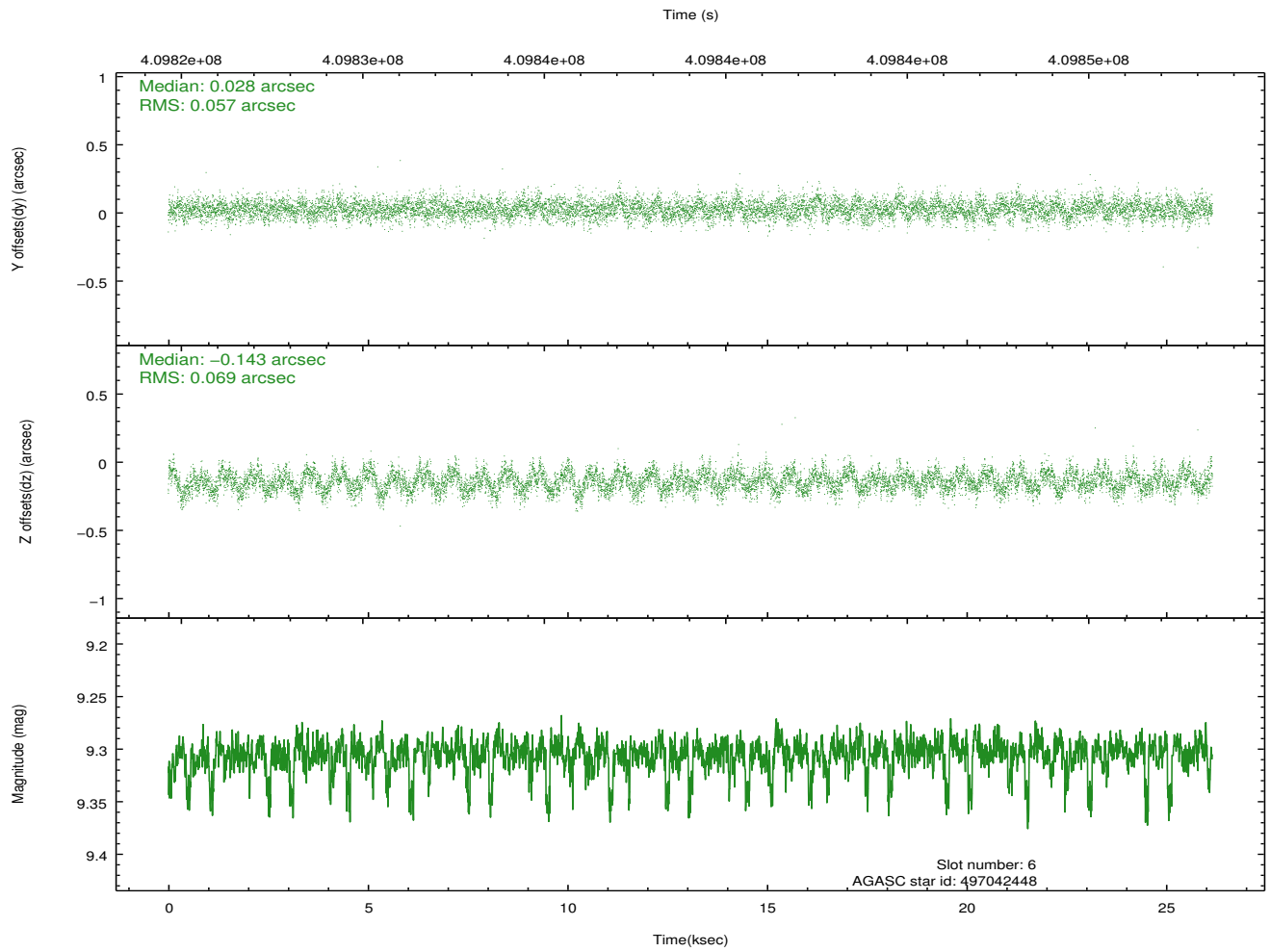
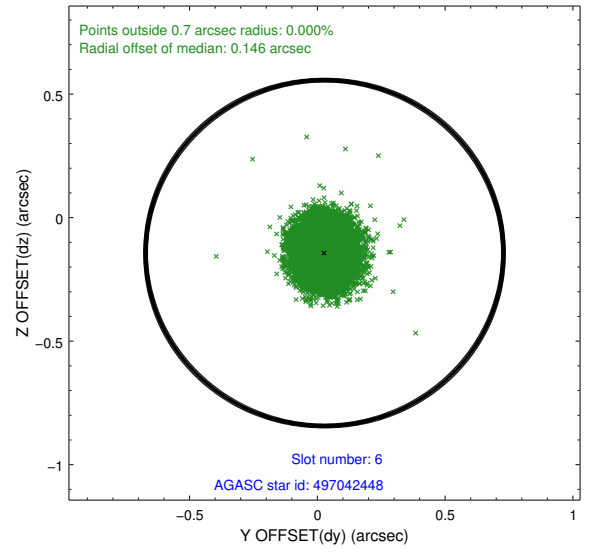
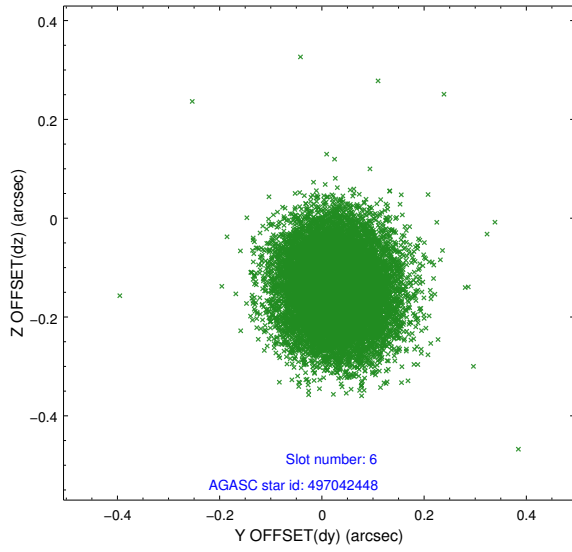
2.4.2 Slot 4



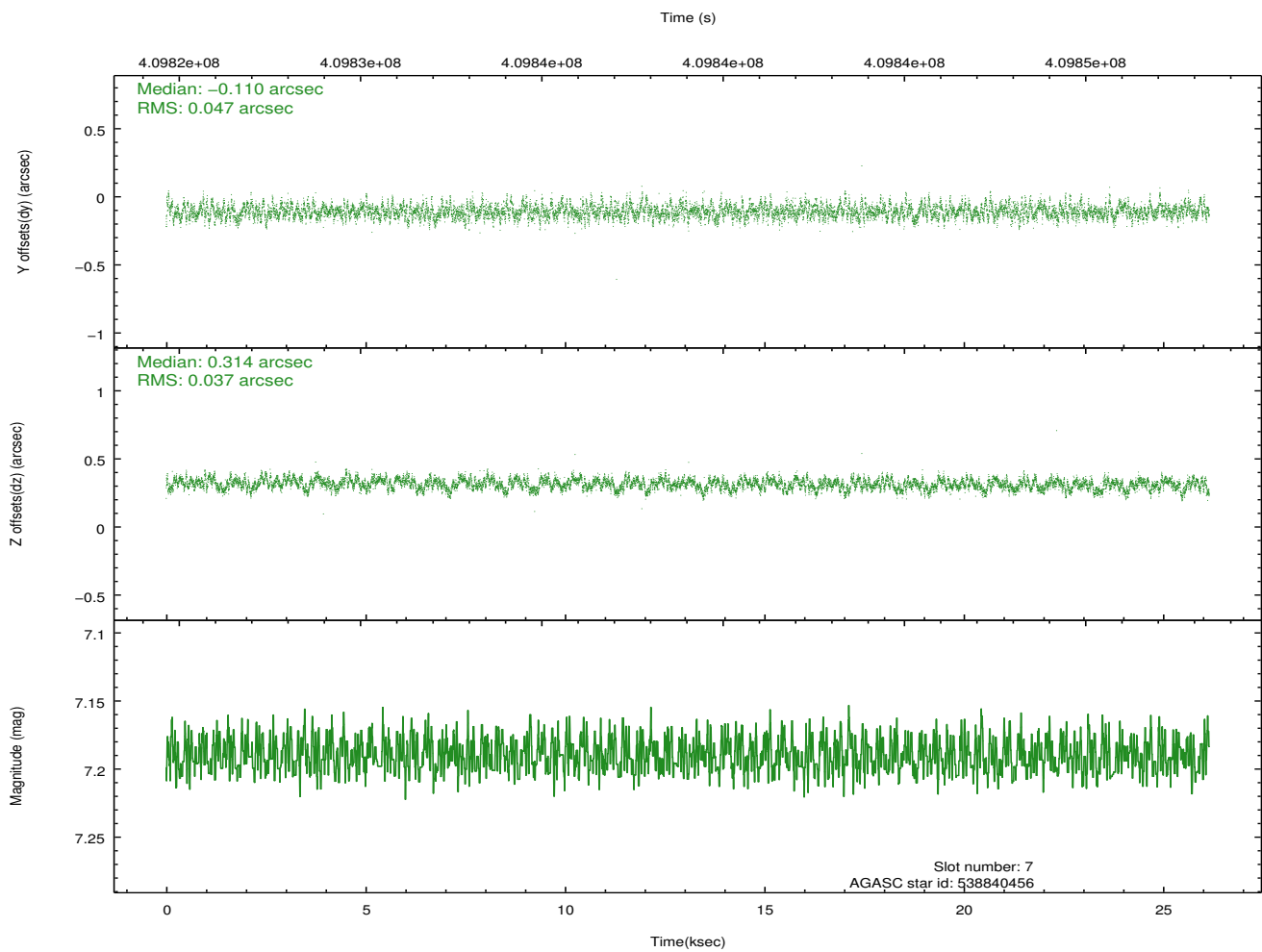
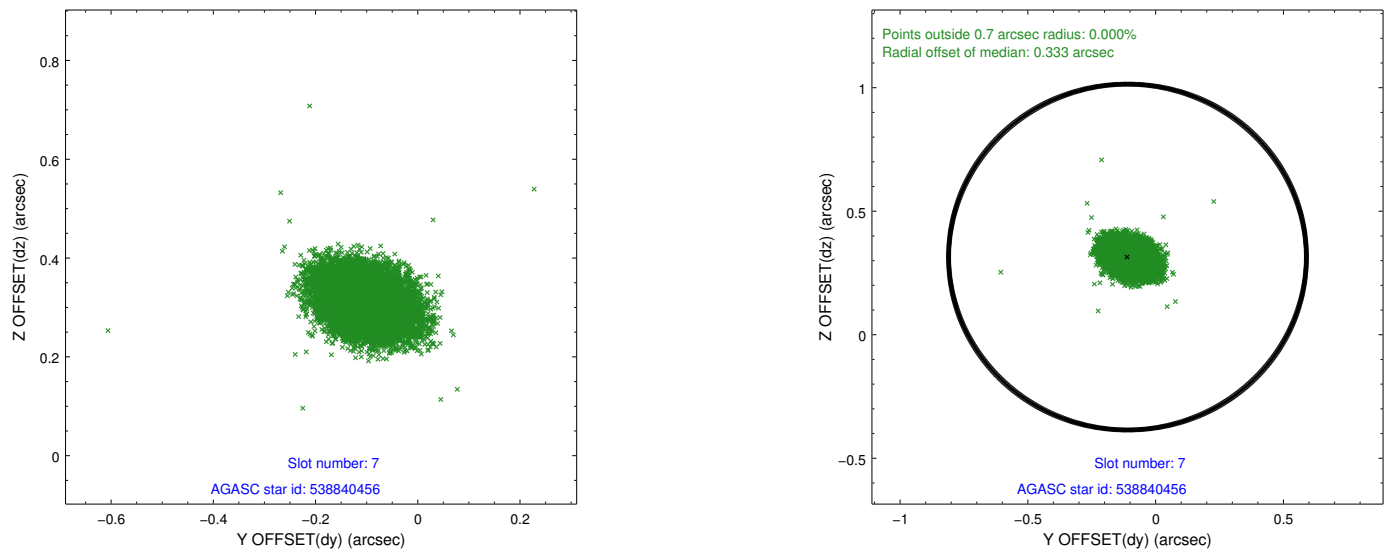
2.4.3 Slot 5



2.4.4 Slot 6

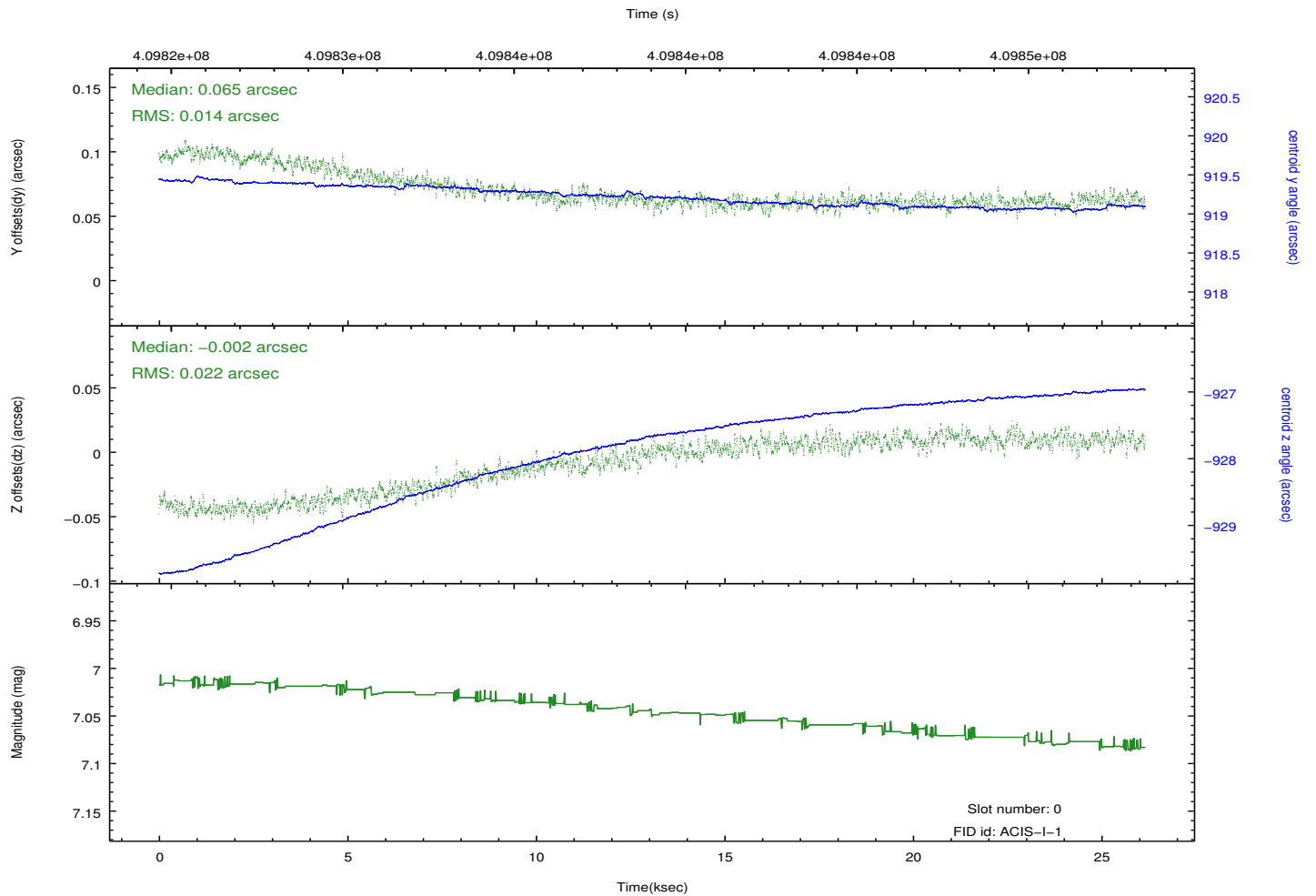
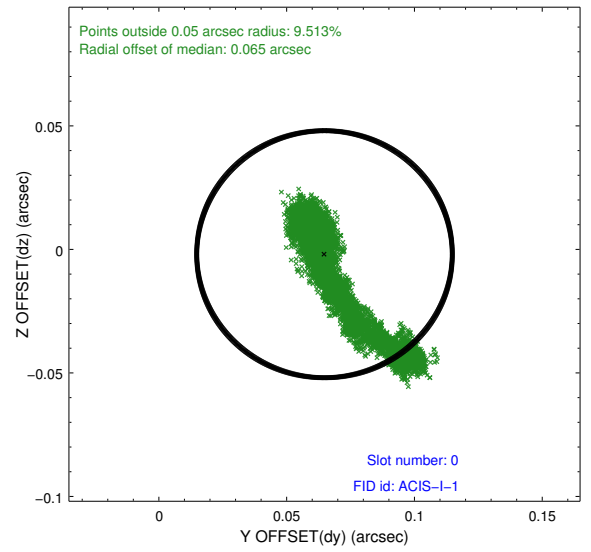
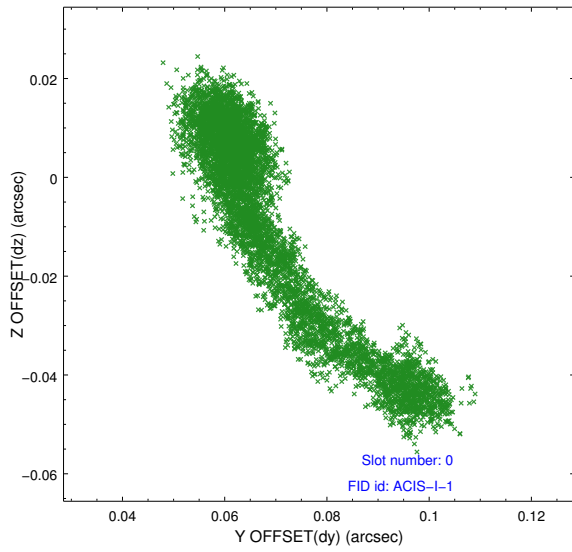


2.4.5 Slot 7

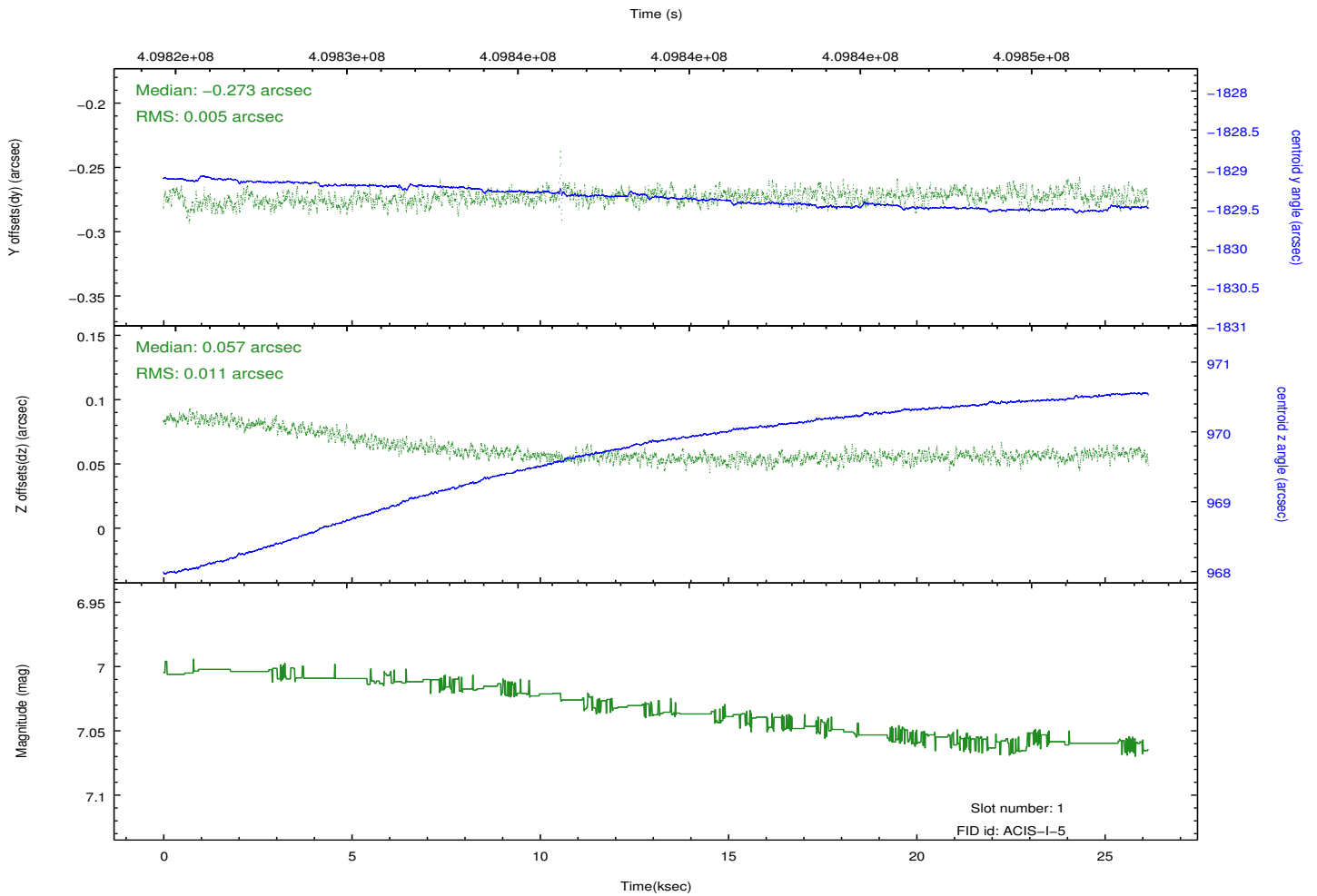
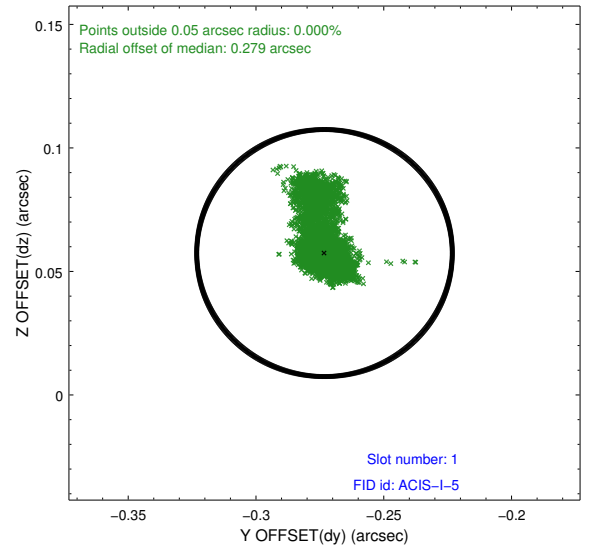
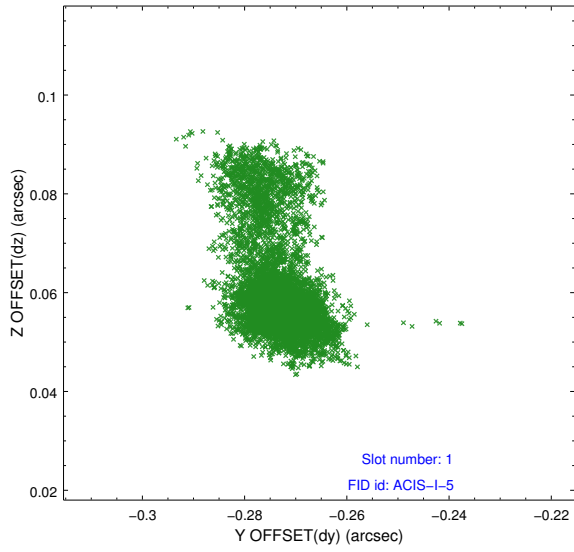


2.5 FID Slots

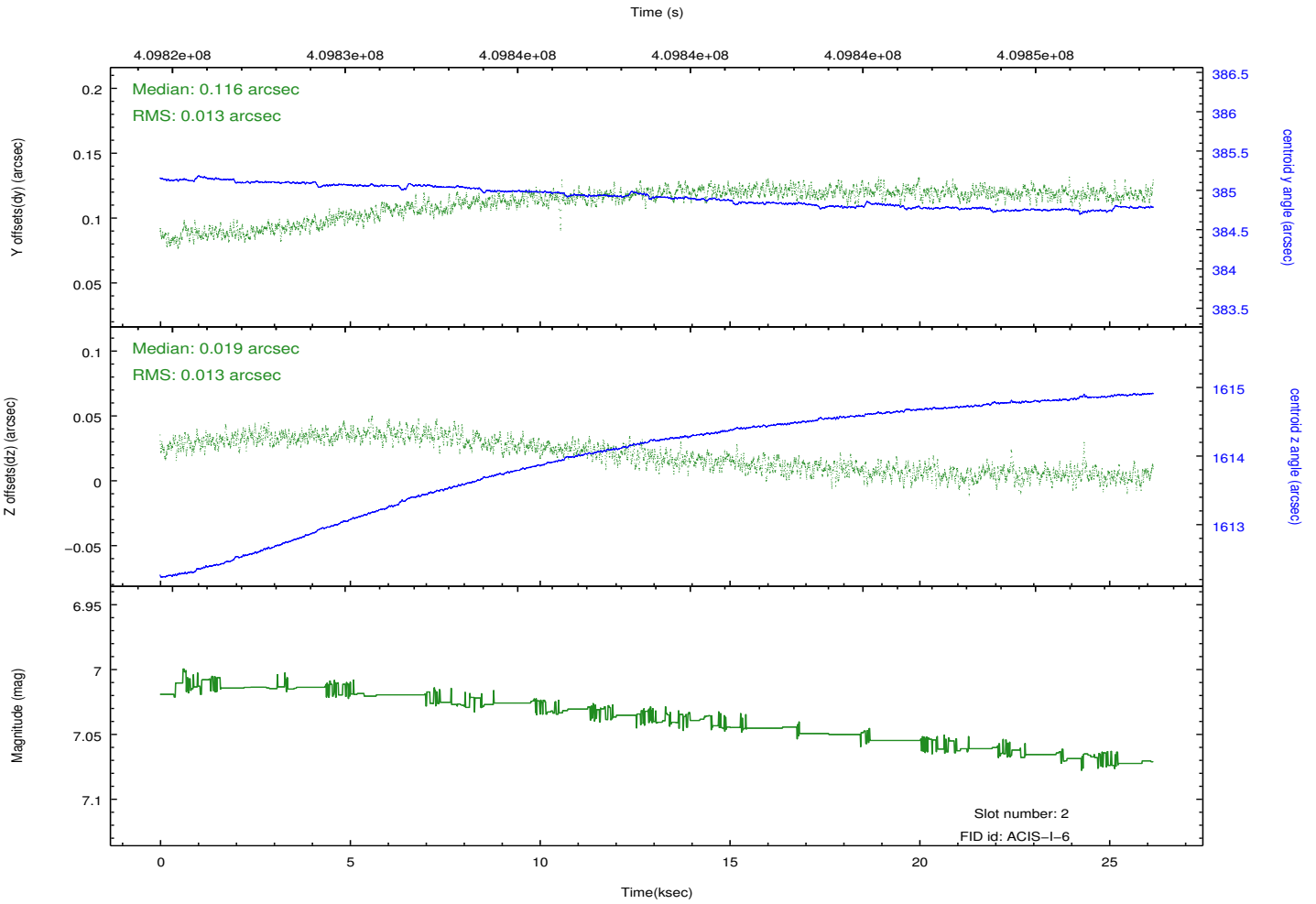
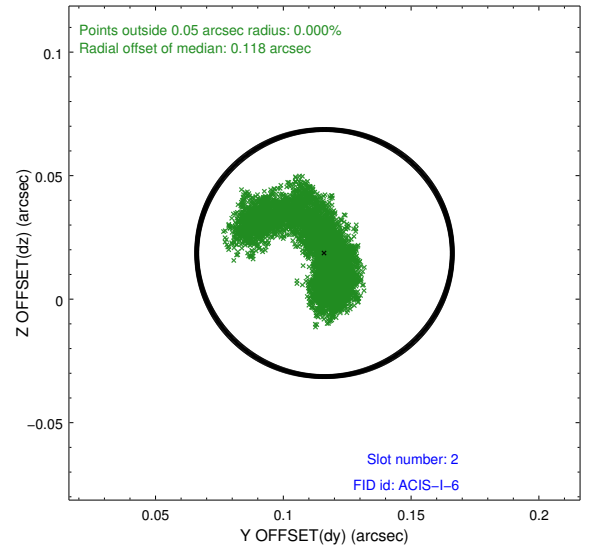
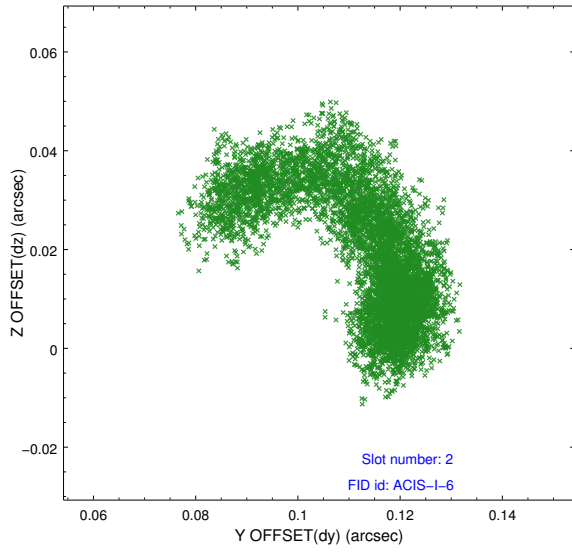
2.5.1 Slot 0



2.5.2 Slot 1



2.5.3 Slot 2



A Summary

A.1 Status

V&V Scientist	Jen Lauer
V&V Date (YYYY-MM-DD)	2012.07.18
V&V Edition	1
V&V Disposition and Status	OK
V&V Charge Time	26.049300200343

A.2 Comments