

V&V Reference Report

L2 ASCDS Version : 8.4.5

Observation 11719 - L2 Version 2
Chandra X-Ray Center

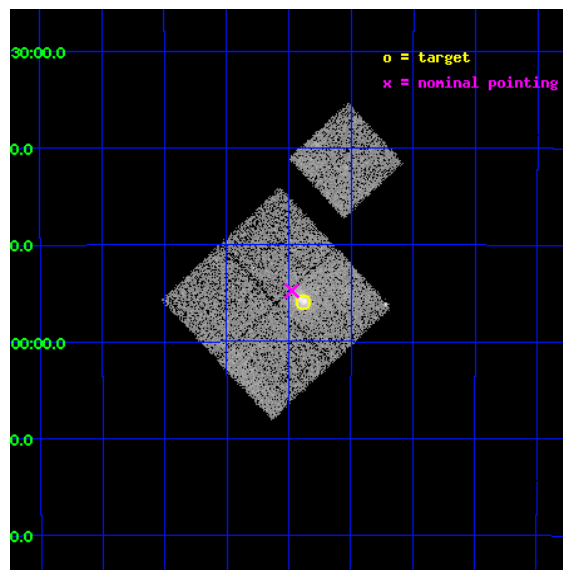
L2 Processing Date : Jun 15 2012

Contents

1	Front	2
2	OBI	3
2.1	OBI	3
2.1.1	Images	3
2.1.2	Bias	3
2.1.3	Parameters	4
2.1.4	Events	4
2.2	Compared Parameters	5
2.3	Aspect	6
2.4	Star Slots	9
2.4.1	Slot 3	9
2.4.2	Slot 4	10
2.4.3	Slot 5	11
2.4.4	Slot 6	12
2.4.5	Slot 7	13
2.5	FID Slots	14
2.5.1	Slot 0	14
2.5.2	Slot 1	15
2.5.3	Slot 2	16
A	Summary	17
A.1	Status	17
A.2	Comments	17

1 Front

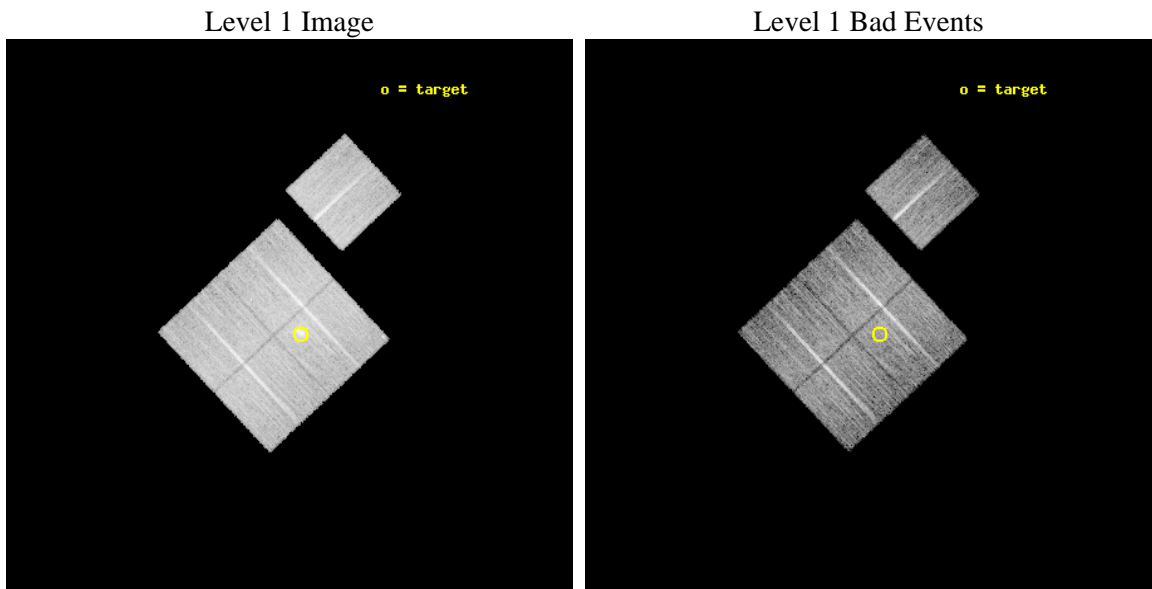
seq_num	800859	Sequence number
obs_id	11719	Observation id
title	MACSJ0358.8-2955: much more distant and exciting than we thought	P
observer	Dr. Harald Ebeling	Principal investigator
object	MACSJ0358.8-2955	Source name
dtcycle	0	
cycle	P	events from which exps? Prim/Second/Both
ra_targ	59.720417	Observer's specified target RA [deg]
dec_targ	-29.931667	Observer's specified target Dec [deg]
ra_nom	59.743770070045	Nominal RA [deg]
dec_nom	-29.912678608923	Nominal Dec [deg]
roll_nom	46.898322678702	Nominal Roll [deg]
revision	2	Processing version of data
ontime	9777.3012685776	Sum of GTIs [s]
livetime	9649.5536295591	Livetime [s]
ontime0	9777.1781286597	Sum of GTIs [s]
ontime1	9774.0781983137	Sum of GTIs [s]
ontime2	9777.2602285743	Sum of GTIs [s]
ontime3	9777.3012685776	Sum of GTIs [s]
ontime6	9777.1371085644	Sum of GTIs [s]
l2events	42507	Number of level 2 events



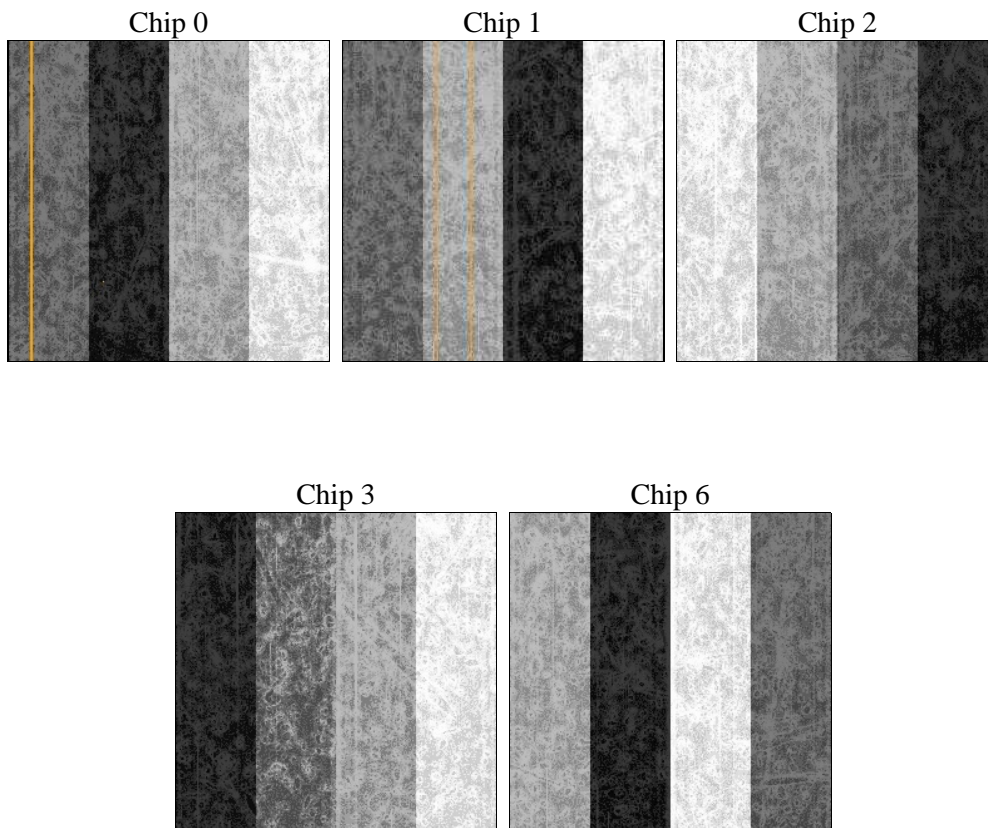
2 OBI

2.1 OBI

2.1.1 Images



2.1.2 Bias



2.1.3 Parameters

obi_num	0	Obi number	sched_exp_time	10000.000000	[s] Scheduled observation exposure time
ascdsver	8.4.5	Processing system revision	ontime	9777.3012685776	Sum of GTIs [s]
caldbver	4.4.10	 	ontime0	9777.1781286597	Sum of GTIs [s]
date	2012-06-15T13:42:44	Date and time of file creation	ontime1	9774.0781983137	Sum of GTIs [s]
revision	2	Processing version of data	ontime2	9777.2602285743	Sum of GTIs [s]
			ontime3	9777.3012685776	Sum of GTIs [s]
			ontime6	9777.1371085644	Sum of GTIs [s]
			l1events	430903	Number of level 1 events

2.1.4 Events

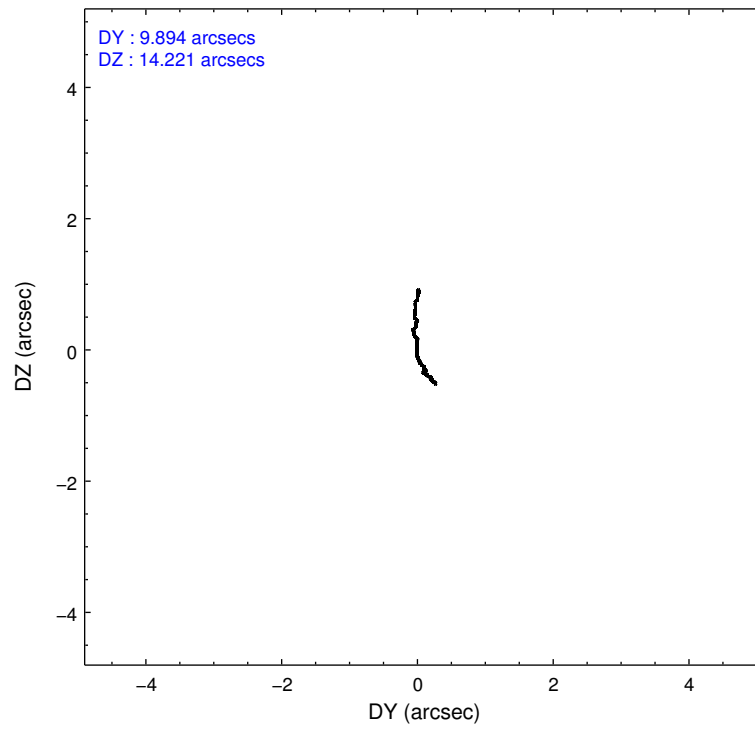
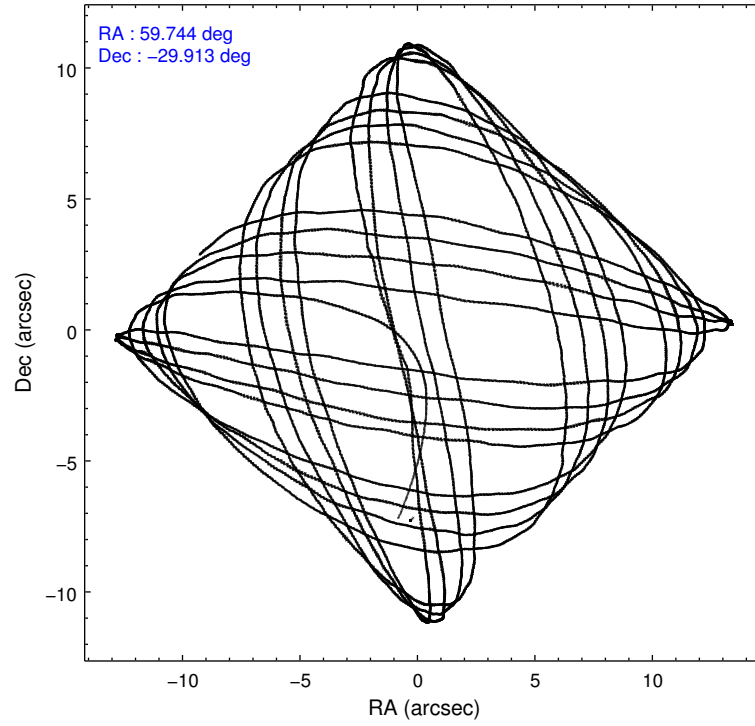
	ccd 0	ccd 1	ccd 2	ccd 3	ccd 6
level 1 events	80248	81866	90074	91244	87471
rejected events	71380	71757	81234	77965	78368
rejected %	88%	87%	90%	85%	89%

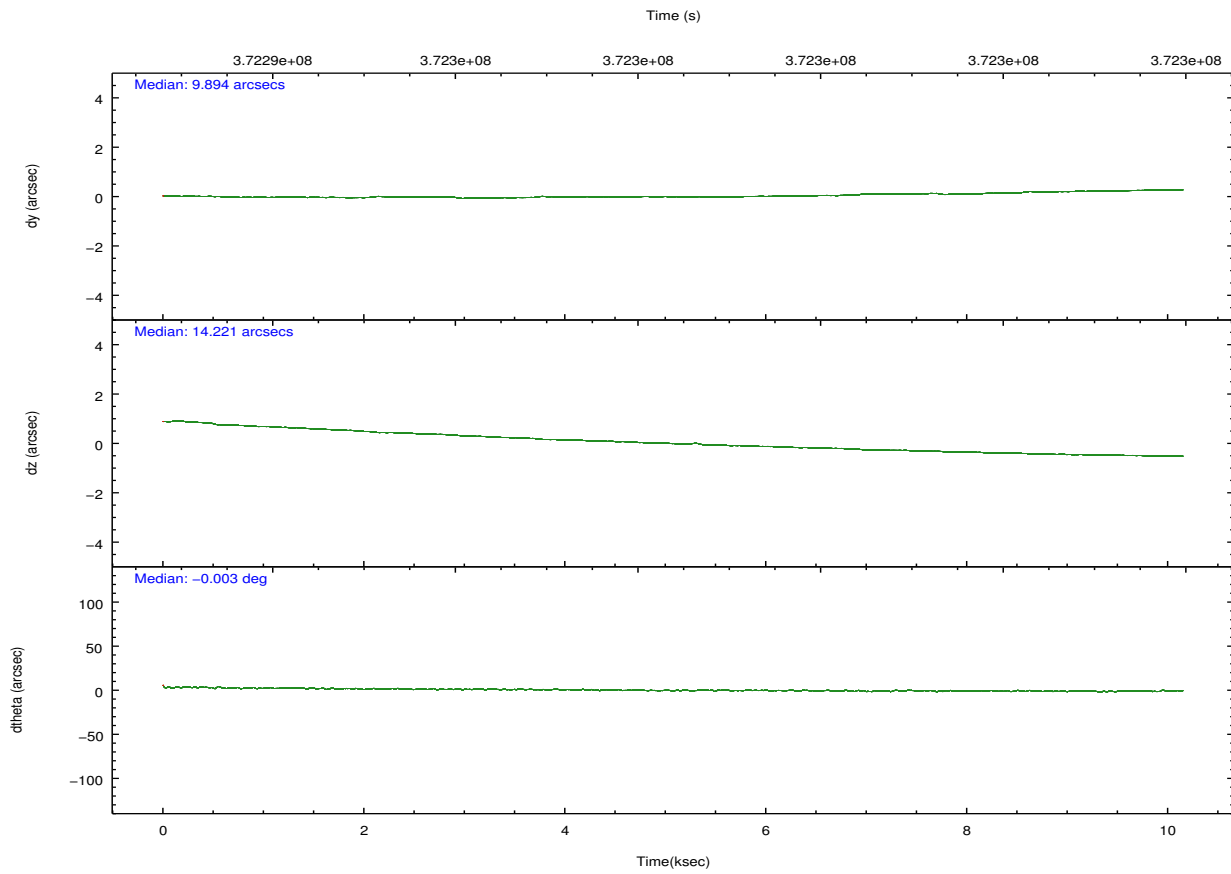
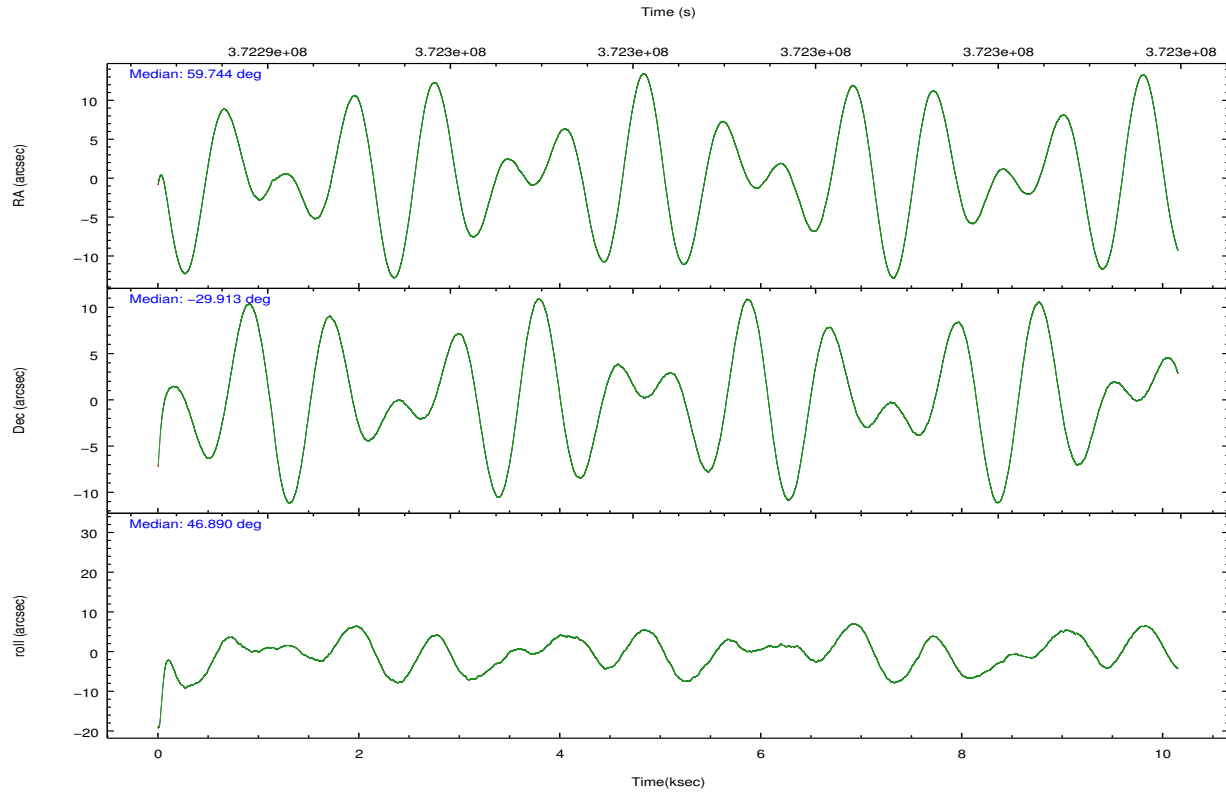
	ccd 0	ccd 1	ccd 2	ccd 3	ccd 6
grade 0 events	3097	3680	3264	7014	3162
	3%	4%	3%	7%	3%
grade 1 events	48	55	56	81	59
	0%	0%	0%	0%	0%
grade 2 events	2212	2358	2185	2293	2057
	2%	2%	2%	2%	2%
grade 3 events	955	1021	890	1058	1001
	1%	1%	0%	1%	1%
grade 4 events	907	1011	965	1074	949
	1%	1%	1%	1%	1%
grade 5 events	3217	3374	2963	3664	3461
	4%	4%	3%	4%	3%
grade 6 events	1698	2041	1538	1849	1937
	2%	2%	1%	2%	2%
grade 7 events	68114	68326	78213	74211	74845
	84%	83%	86%	81%	85%

2.2 Compared Parameters

Parameter	Planned	Actual	Parameter	Planned	Actual
Instrument	ACIS	ACIS	Obspar format version number	7	7
Detector	ACIS-01236	ACIS-01236	Obspar file type	PREDICTED	ACTUAL
Grating	NONE	NONE	Obspar update status	NONE	UPDATED
Data mode	VFAINT	VFAINT	Number of optional ACIS chips dropped	0	0
Observation mode	POINTING	POINTING	On-chip summing requested	N	N
[deg] Pointing RA	59.736733	59.743770070045	Subarray requested	NONE	NONE
[deg] Pointing Dec	-29.939507	-29.91267860892266	Alternating exposures requested	N	N
[deg] Pointing Roll	46.686155	46.89832267870153	[s] Primary exposure time	0.000000	3.1
[mm] SIM focus pos	-0.782348	-0.7809083437167272			
[mm] SIM defocus	0	0.001439871863259334			
[mm] SIM translation stage pos	-229.442463	-229.4463571591594			
[mm] SIM translation stage offset	-4.15	-4.146095843770325			
[s] Observation start time (MET)	372293465.184000	372291822.0139			
Observation start date	2009-10-18T22:49:59	2009-10-18T22:23:42			
[s] Observation end time (MET)	372303465.184000	372304323.42703			
Observation end date	2009-10-19T01:36:39	2009-10-19T01:52:03			
Read mode	TIMED	TIMED			

2.3 Aspect



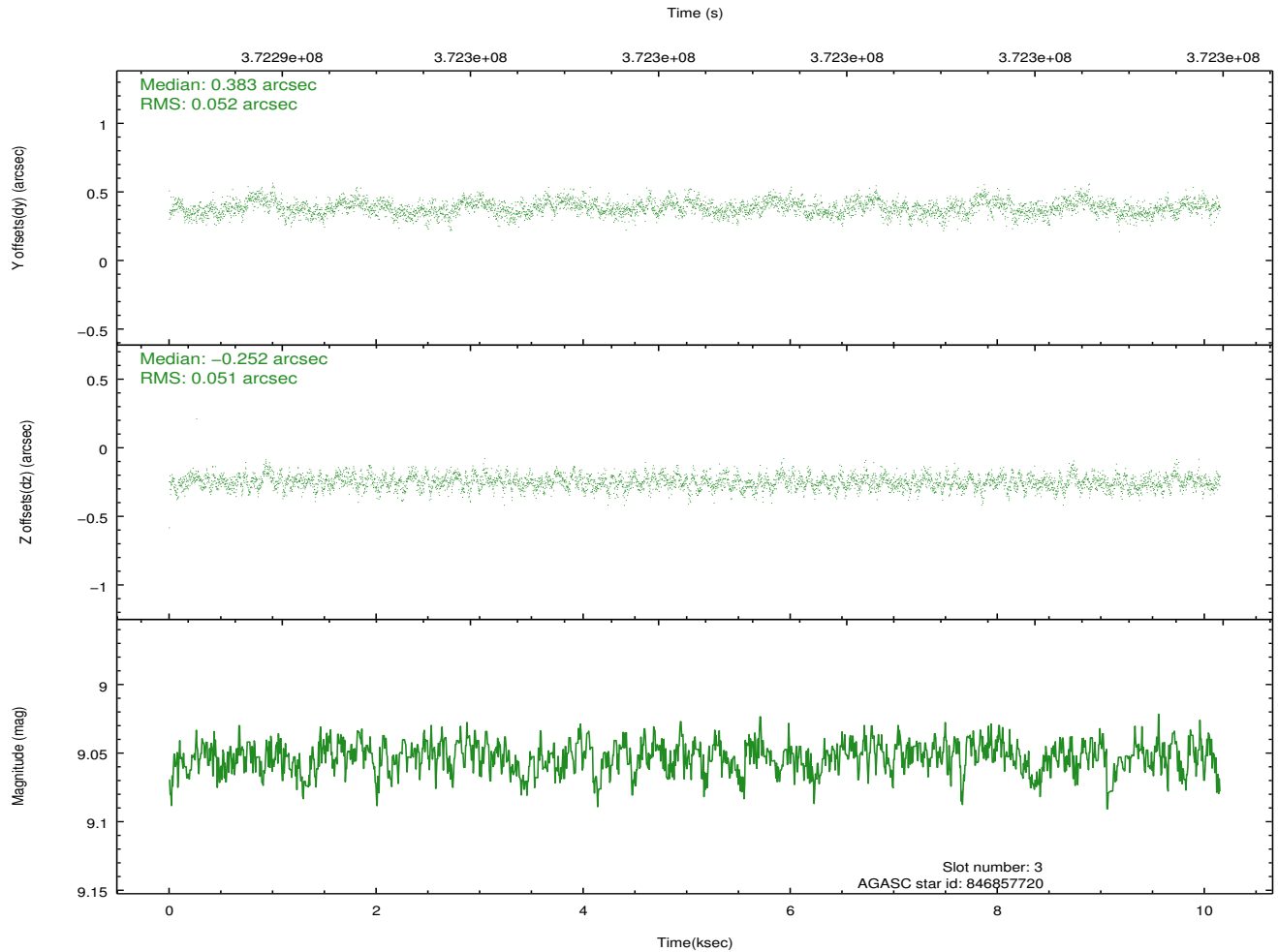
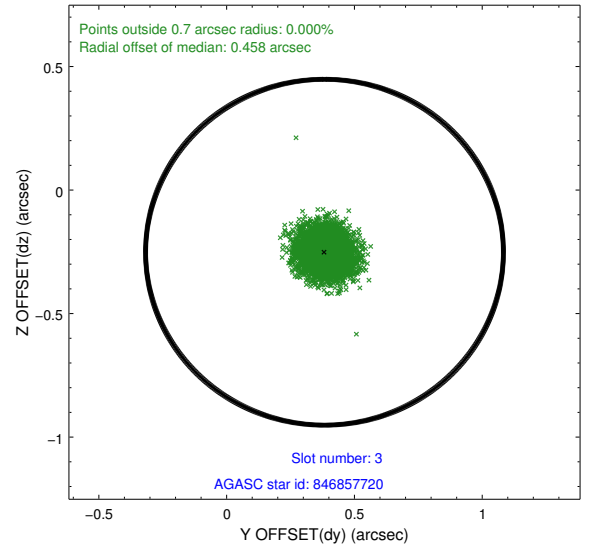
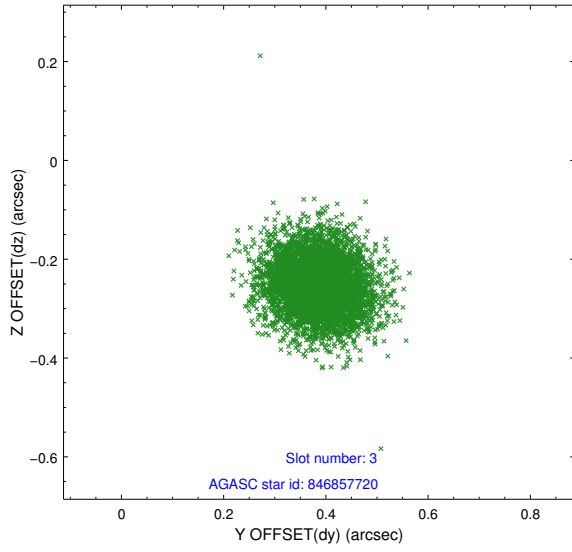


Slot Statistics

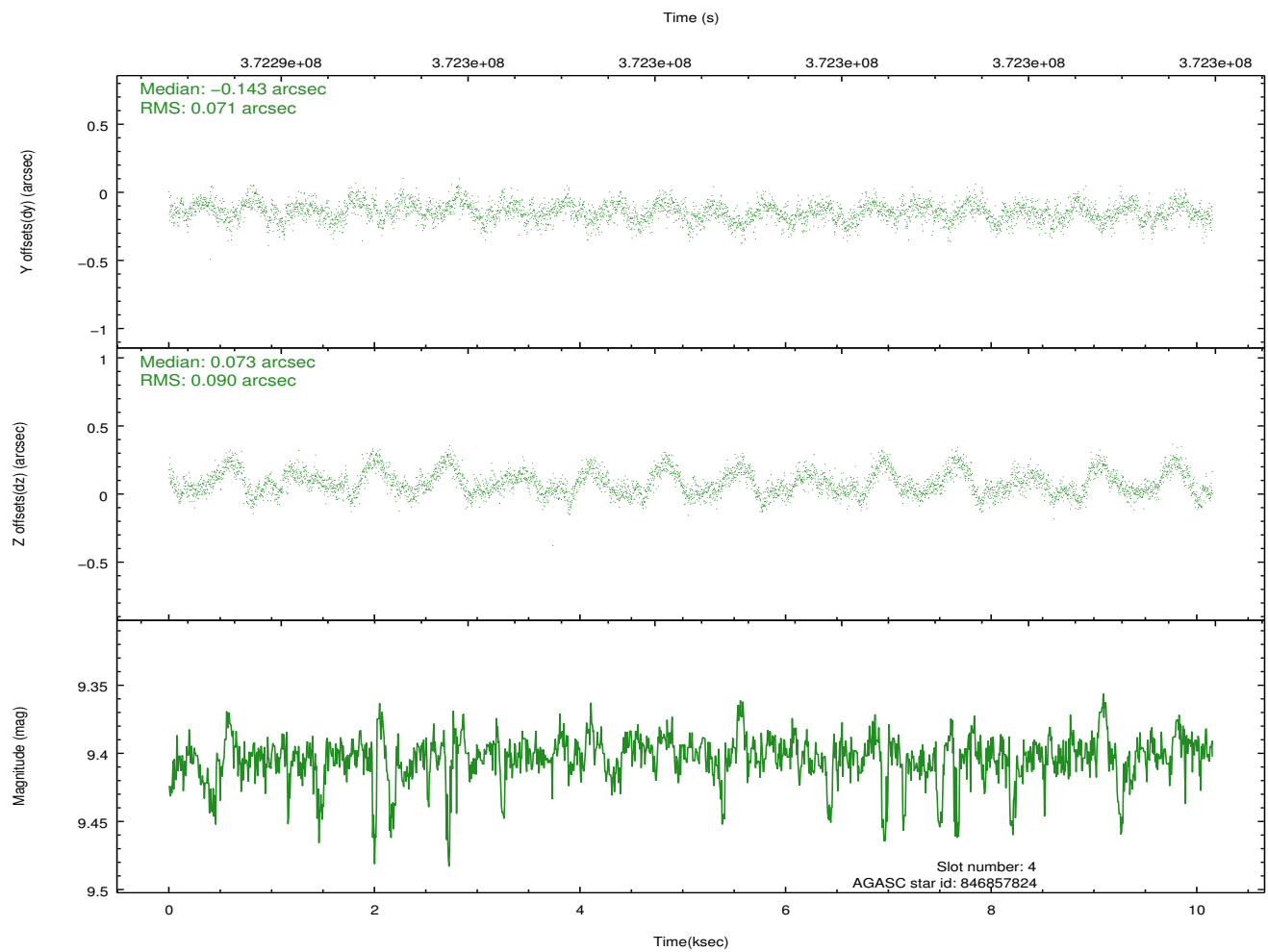
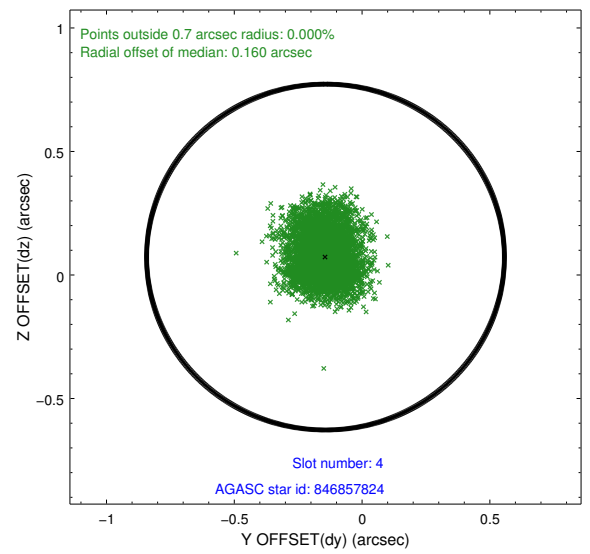
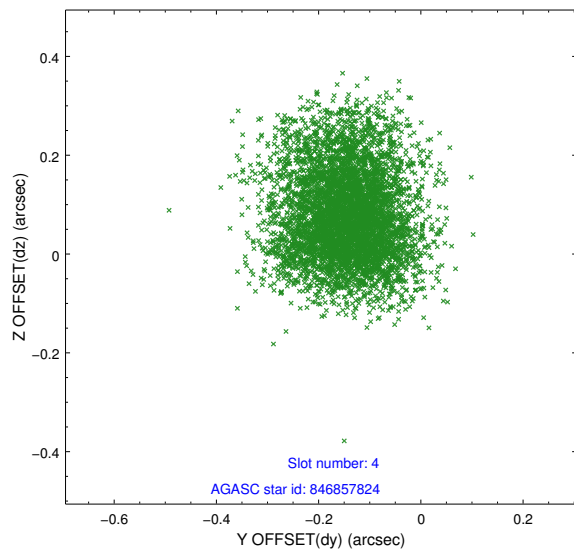
slot	status	id	mag	n_pts	med_dy	med_dz	dr1	dr2	ra	dec	mean_y	mean_z
0	FID	ACIS-I-1	6.99	2476	0.069	-0.004	0.028	0.051	0.000000	0.000000	929.67	-922.93
1	FID	ACIS-I-5	6.98	2476	-0.251	0.069	0.014	0.027	0.000000	0.000000	-1818.50	974.32
2	FID	ACIS-I-6	6.99	2476	0.088	0.006	0.016	0.025	0.000000	0.000000	394.63	1619.38
3	GUIDE	846857720	9.05	4950	0.383	-0.252	0.078	0.126	59.409213	-29.868084	-514.79	918.92
4	GUIDE	846857824	9.40	4936	-0.143	0.073	0.121	0.202	59.902391	-29.338829	1929.69	1105.10
5	GUIDE	846865584	7.42	4946	-0.158	-0.033	0.081	0.127	59.046247	-29.660497	-755.62	2255.97
6	GUIDE	921311000	9.73	4944	-0.110	0.218	0.132	0.206	59.650402	-30.566719	-1826.30	-1354.04
7	GUIDE	921448776	6.40	4951	0.028	-0.014	0.061	0.103	60.169401	-30.490701	-524.53	-2340.04

2.4 Star Slots

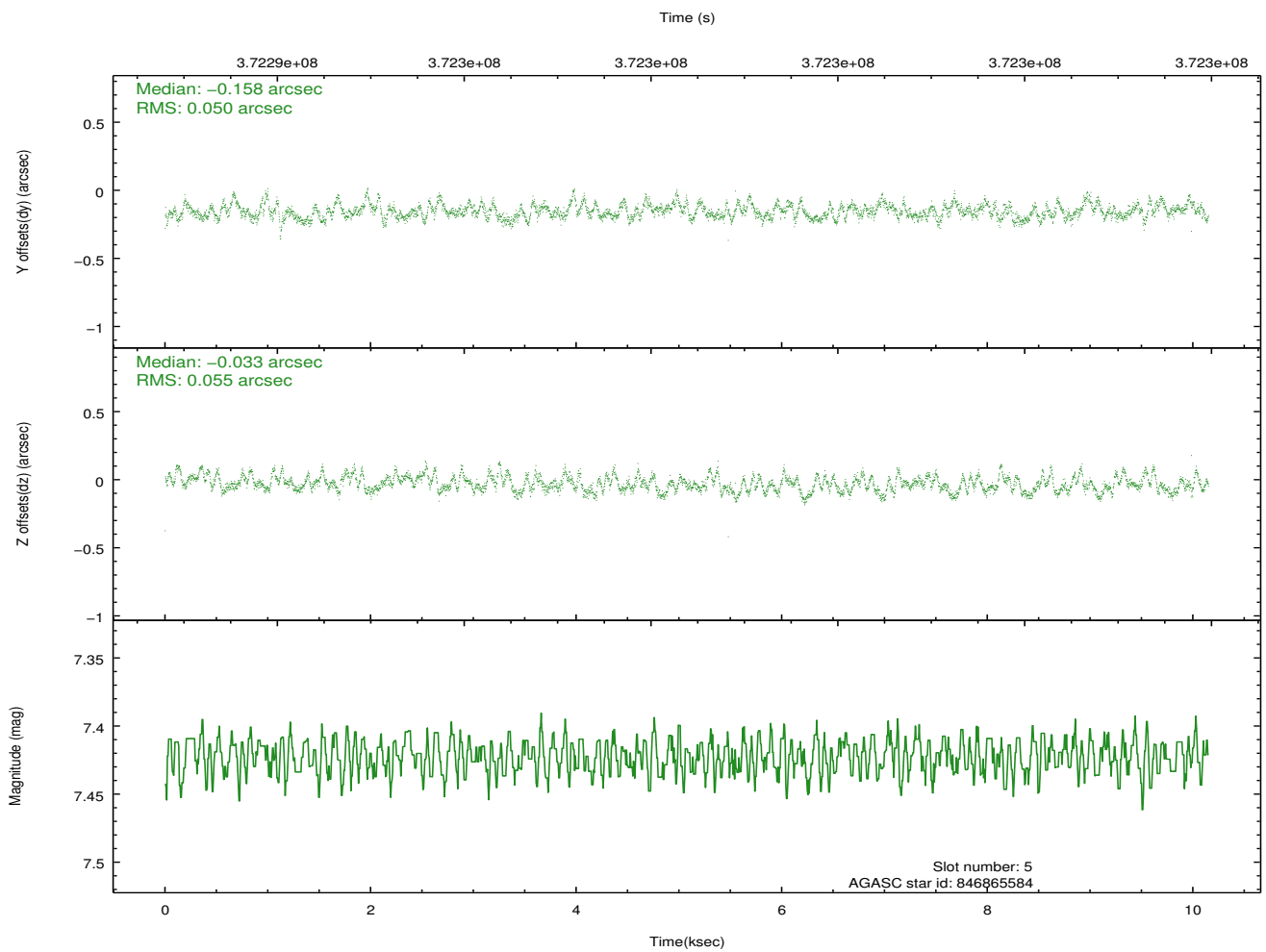
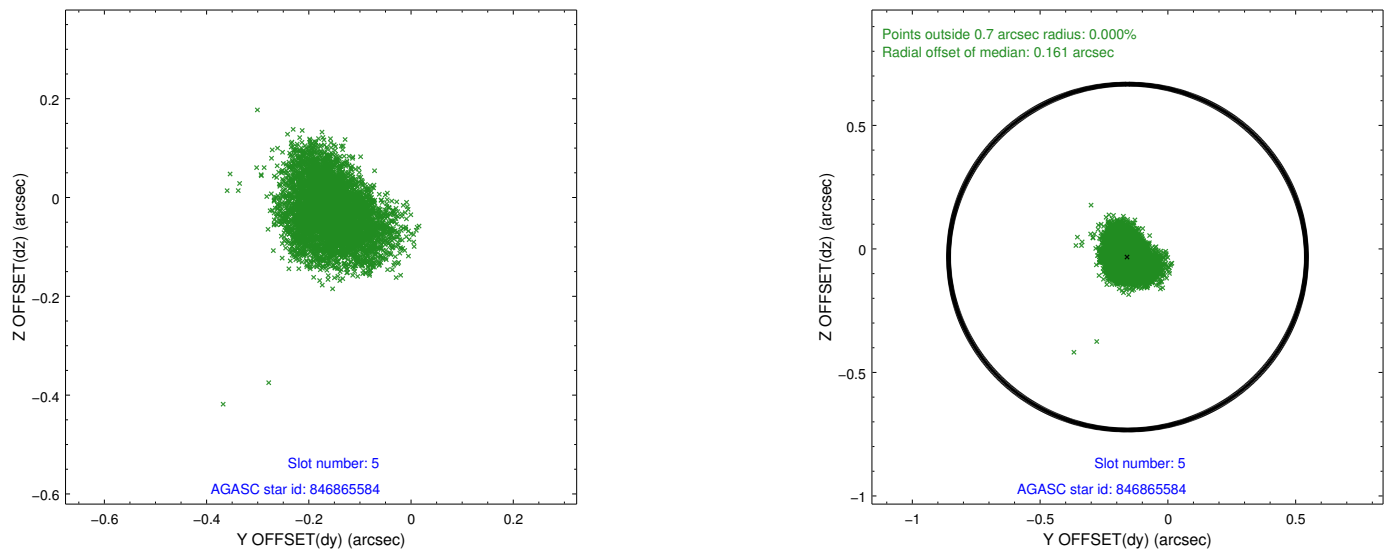
2.4.1 Slot 3



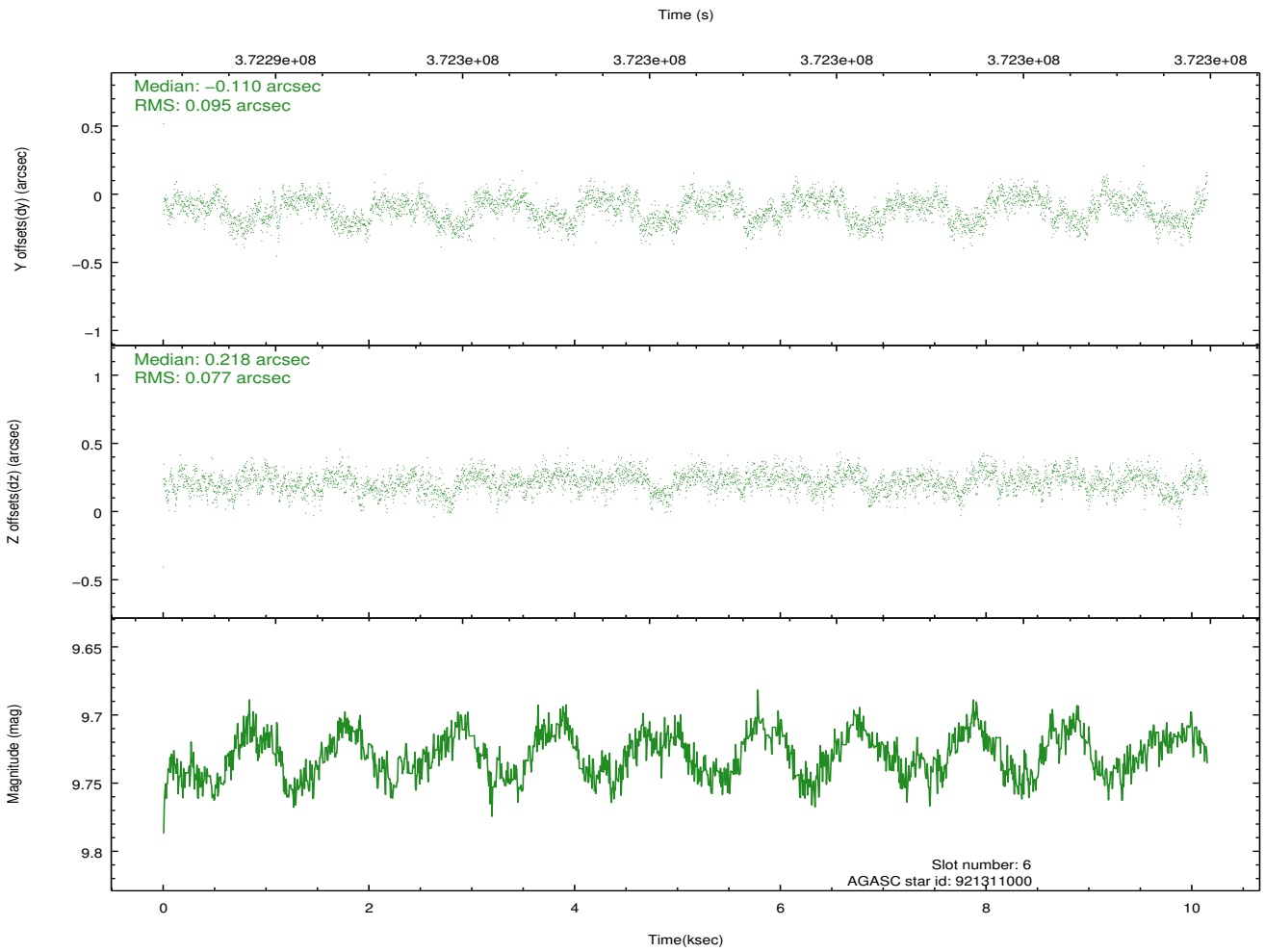
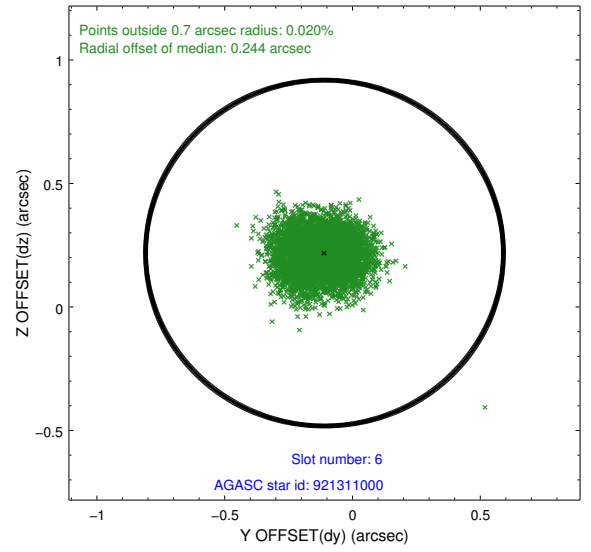
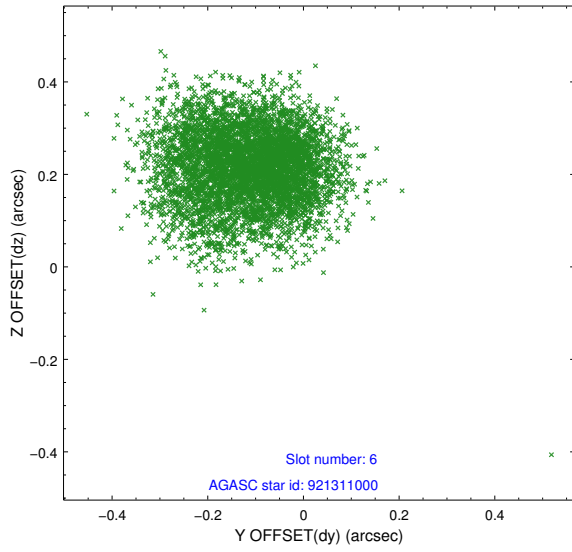
2.4.2 Slot 4



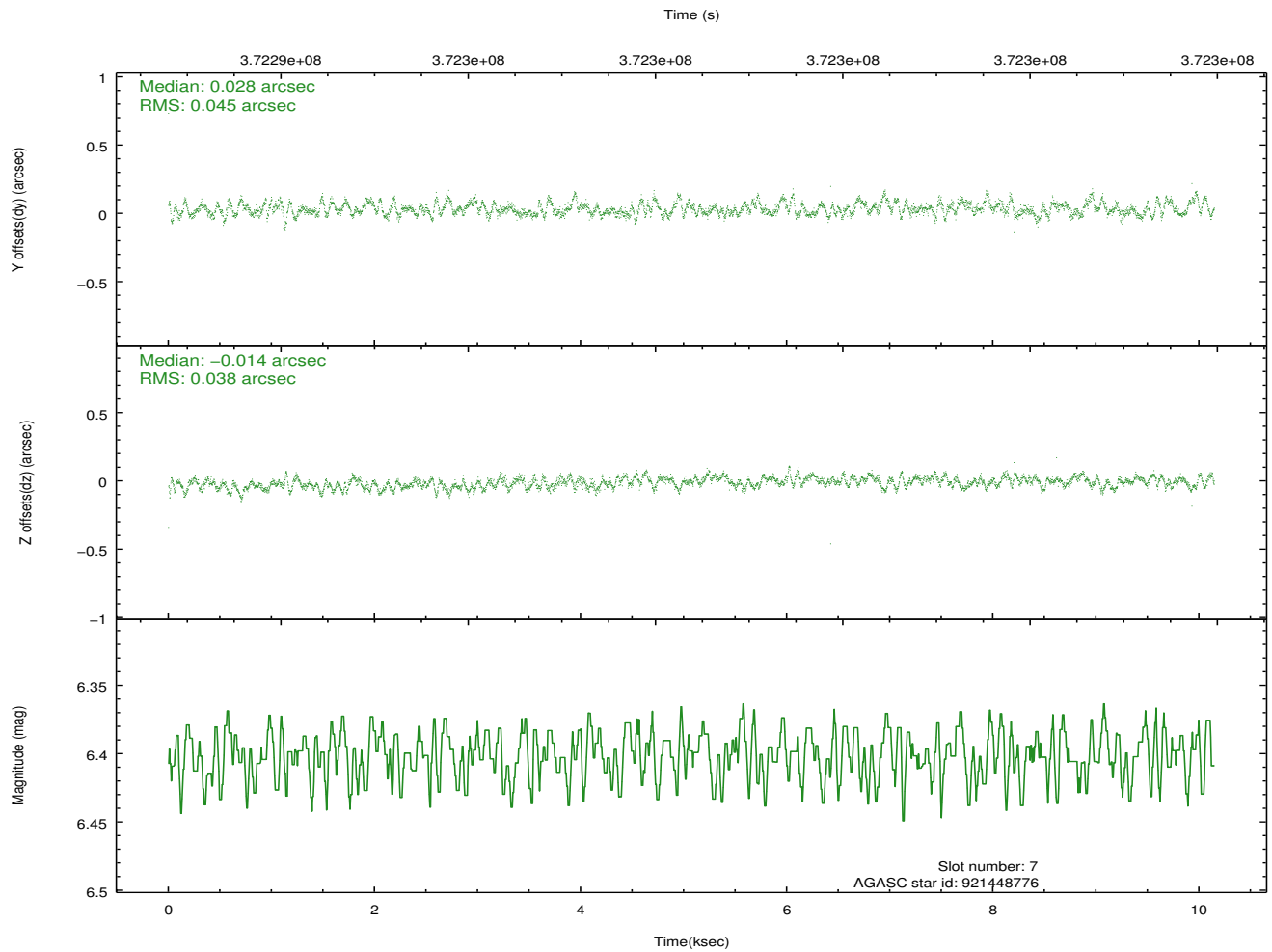
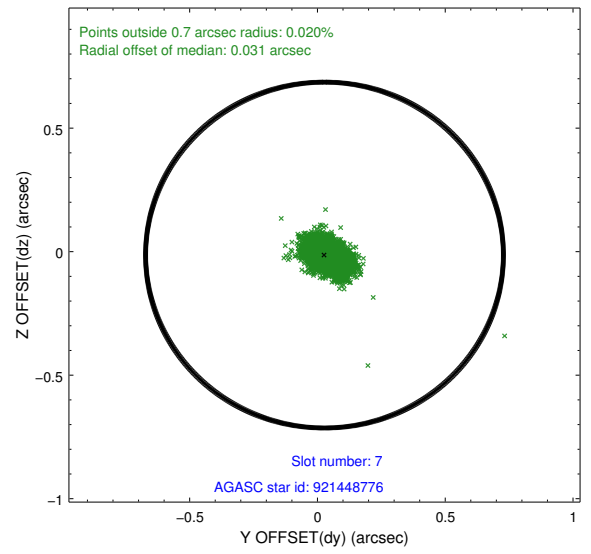
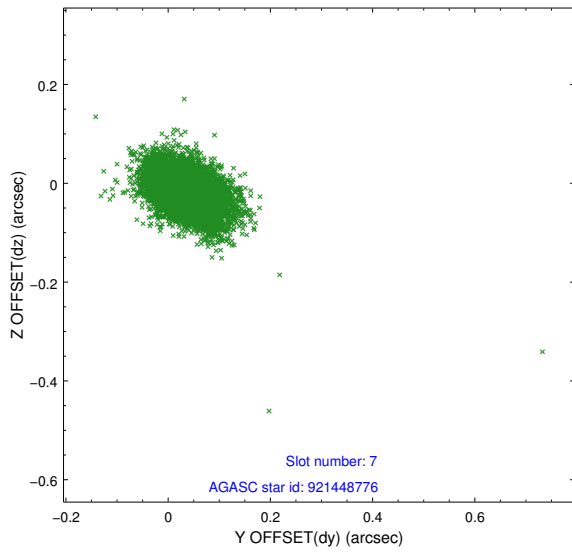
2.4.3 Slot 5



2.4.4 Slot 6

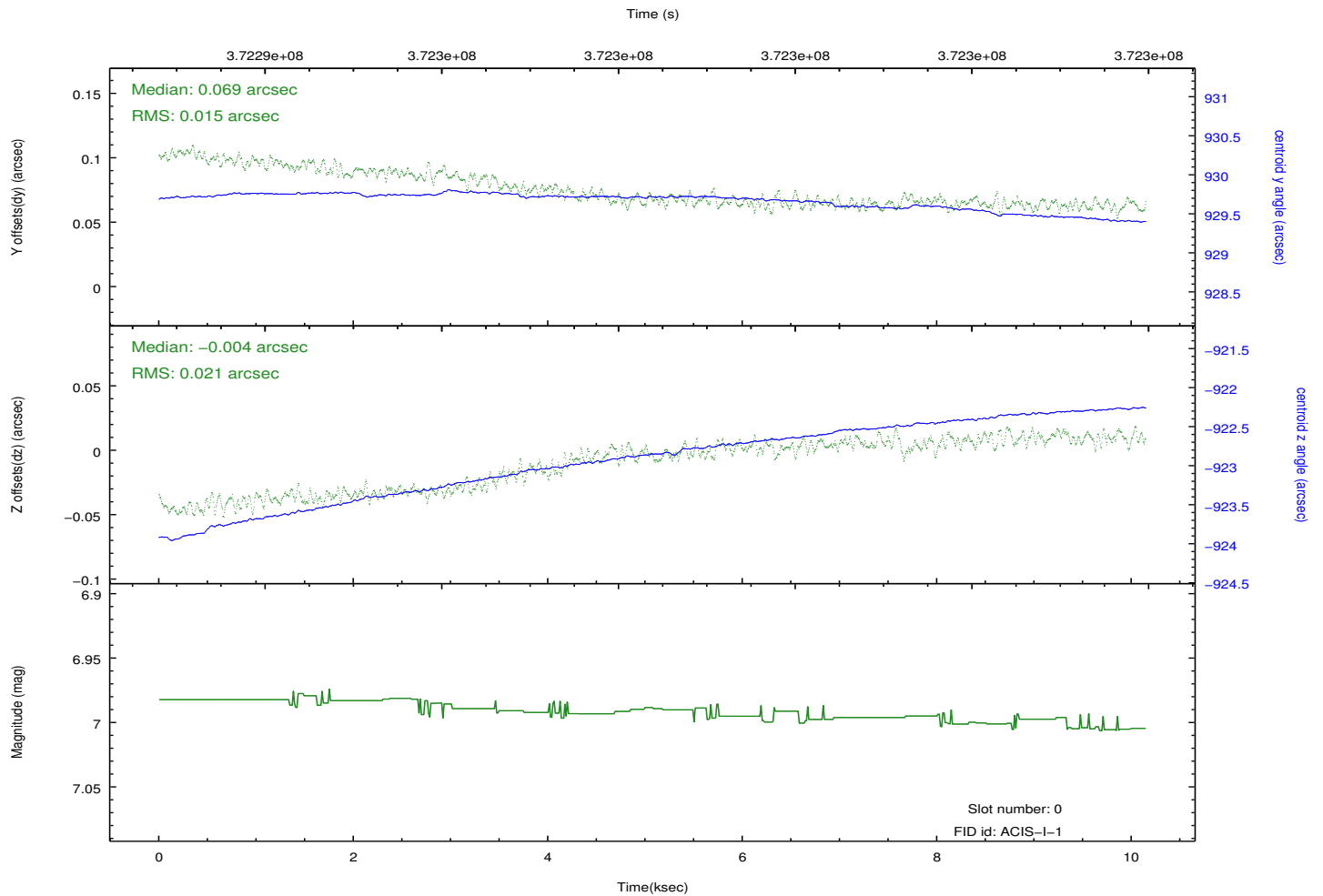
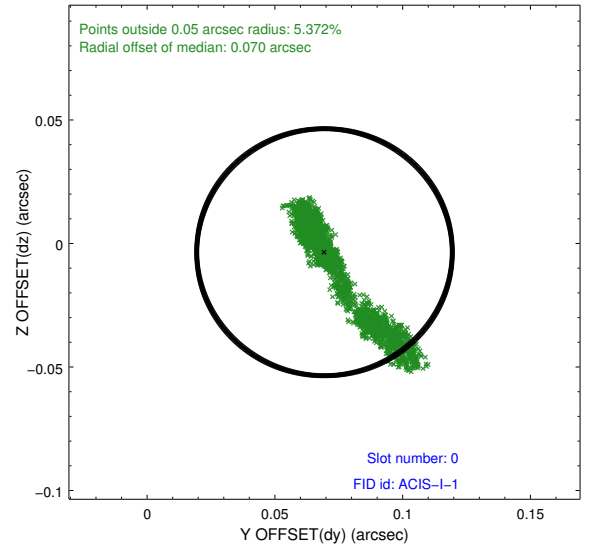
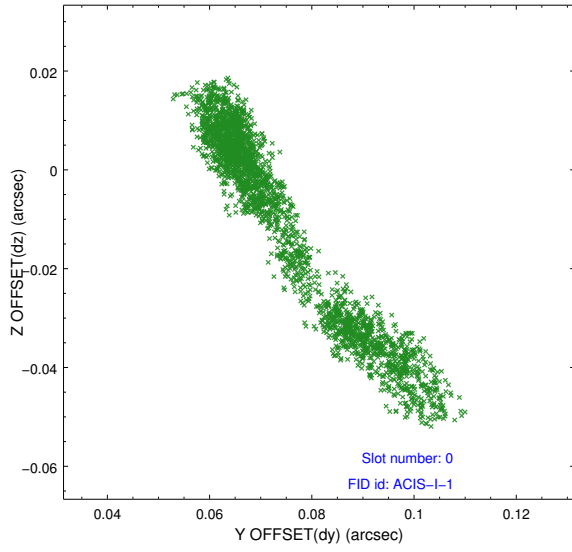


2.4.5 Slot 7

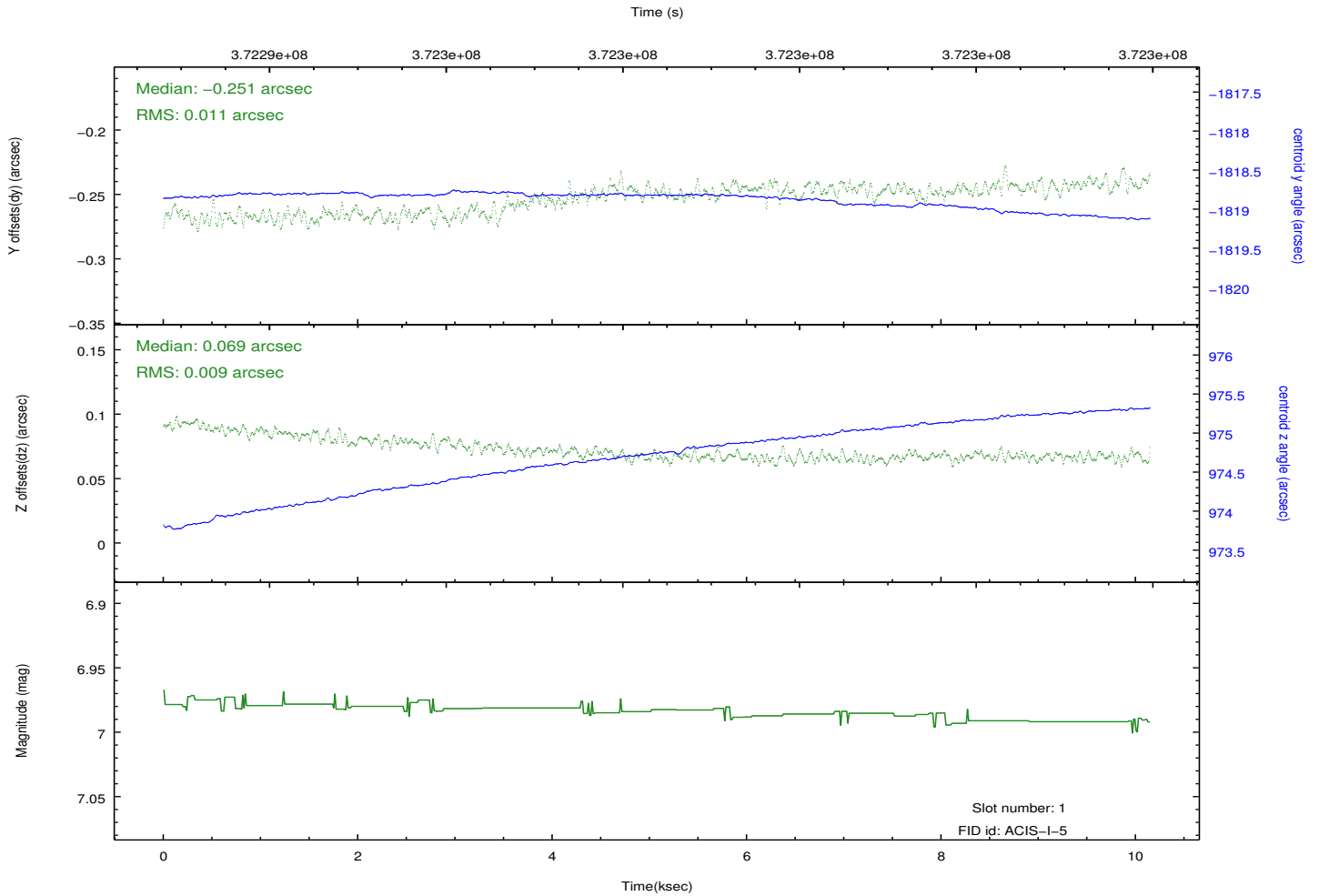
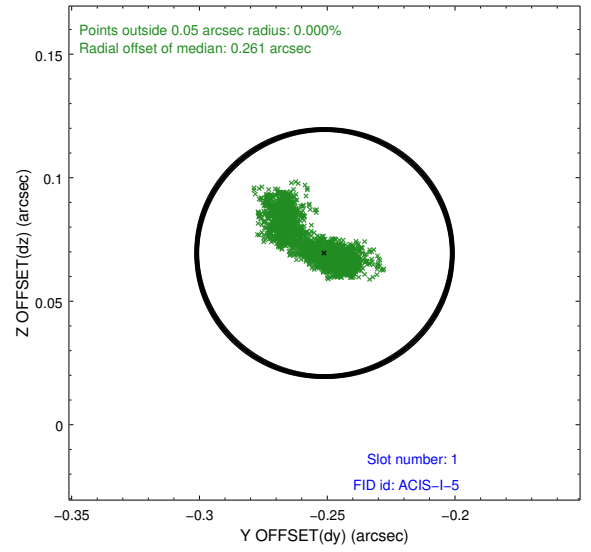
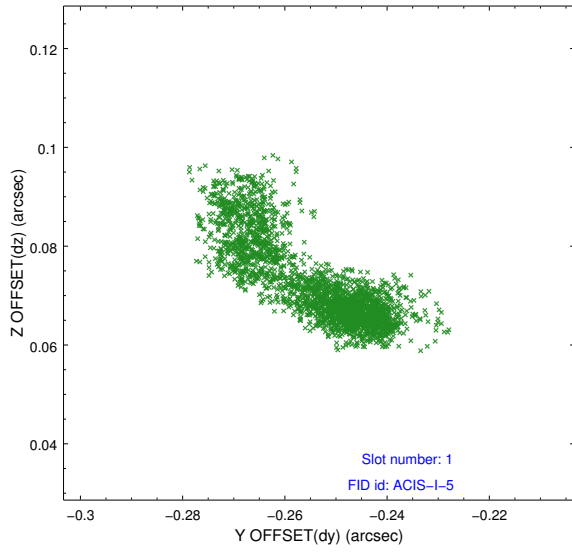


2.5 FID Slots

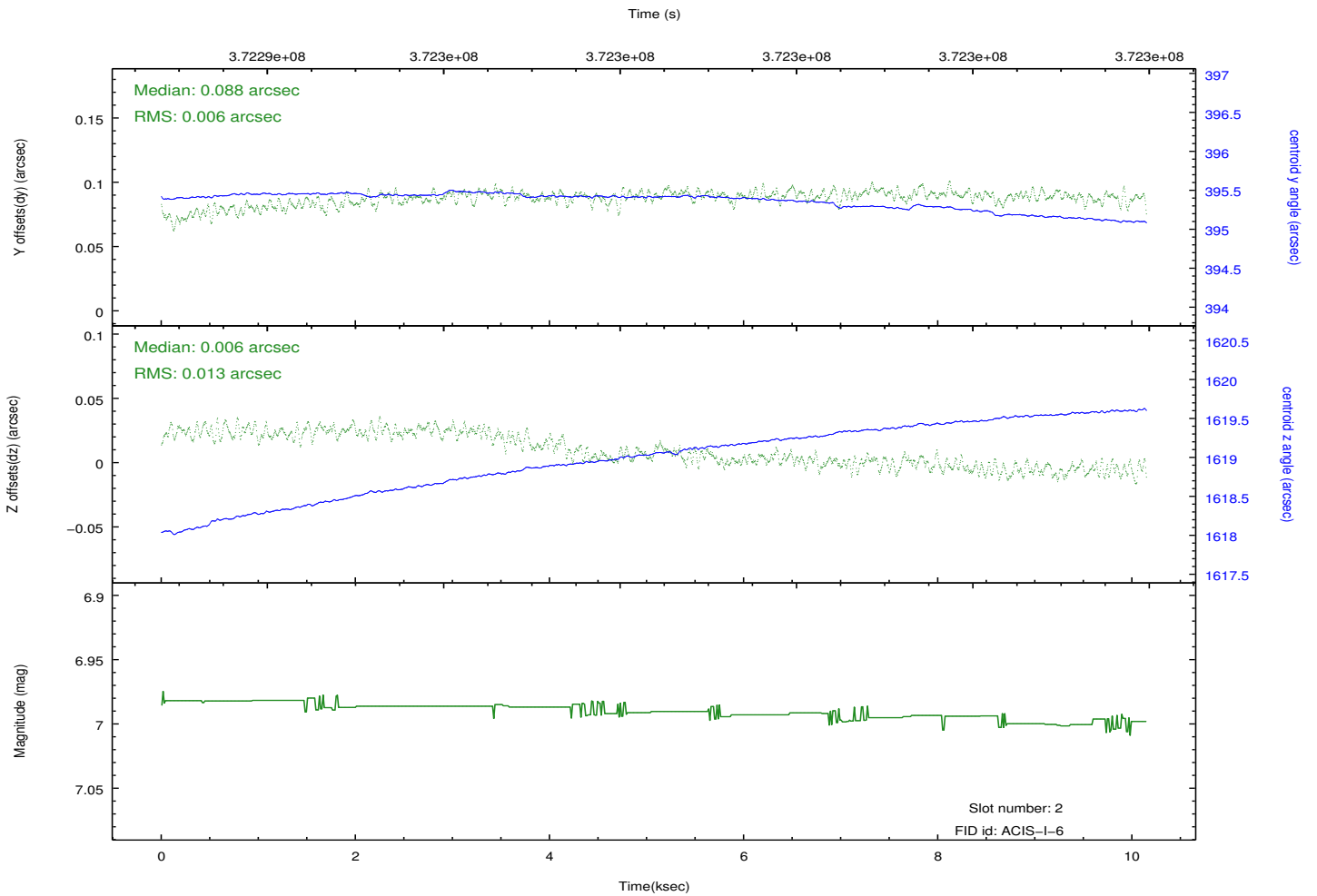
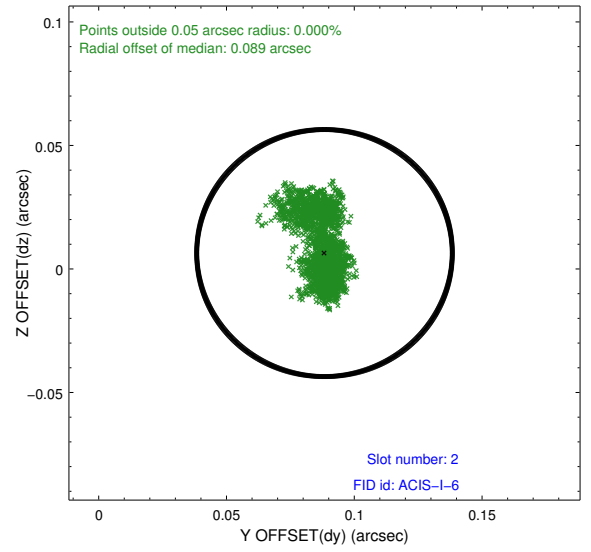
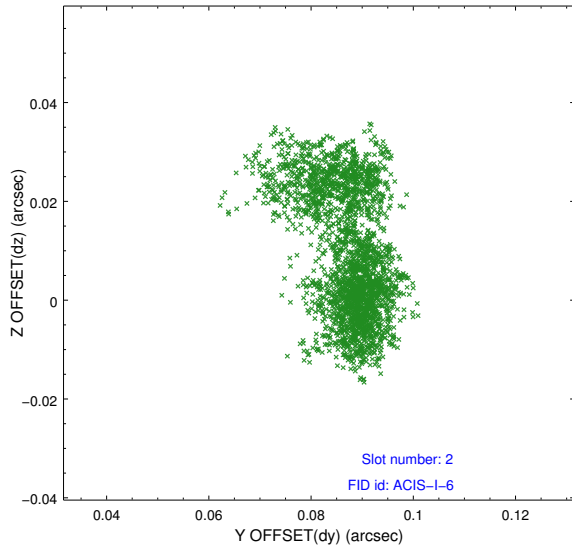
2.5.1 Slot 0



2.5.2 Slot 1



2.5.3 Slot 2



A Summary

A.1 Status

V&V Scientist	Jen Lauer
V&V Date (YYYY-MM-DD)	2012.06.19
V&V Edition	1
V&V Disposition and Status	OK
V&V Charge Time	9.777301260829

A.2 Comments