

V&V Reference Report

L2 ASCDS Version : 8.4.5

Observation 11859 - L2 Version 2
Chandra X-Ray Center

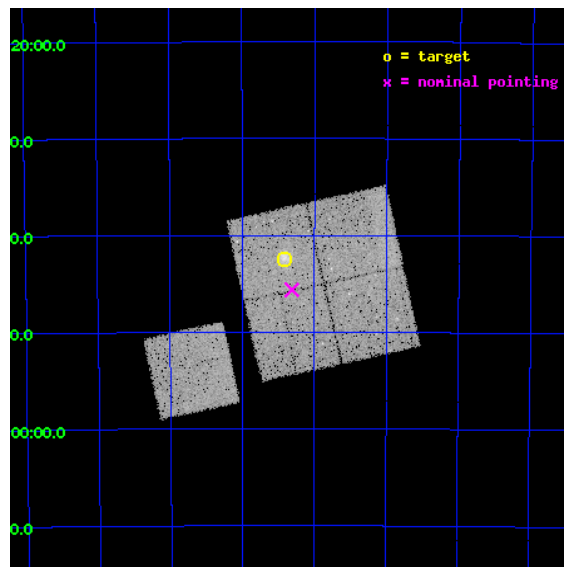
L2 Processing Date : Jun 19 2012

Contents

1	Front	2
2	OBI	3
2.1	OBI	3
2.1.1	Images	3
2.1.2	Bias	3
2.1.3	Parameters	4
2.1.4	Events	4
2.2	Compared Parameters	5
2.3	Aspect	6
2.4	Star Slots	9
2.4.1	Slot 3	9
2.4.2	Slot 4	10
2.4.3	Slot 5	11
2.4.4	Slot 6	12
2.4.5	Slot 7	13
2.5	FID Slots	14
2.5.1	Slot 0	14
2.5.2	Slot 1	15
2.5.3	Slot 2	16
A	Summary	17
A.1	Status	17
A.2	Comments	17

1 Front

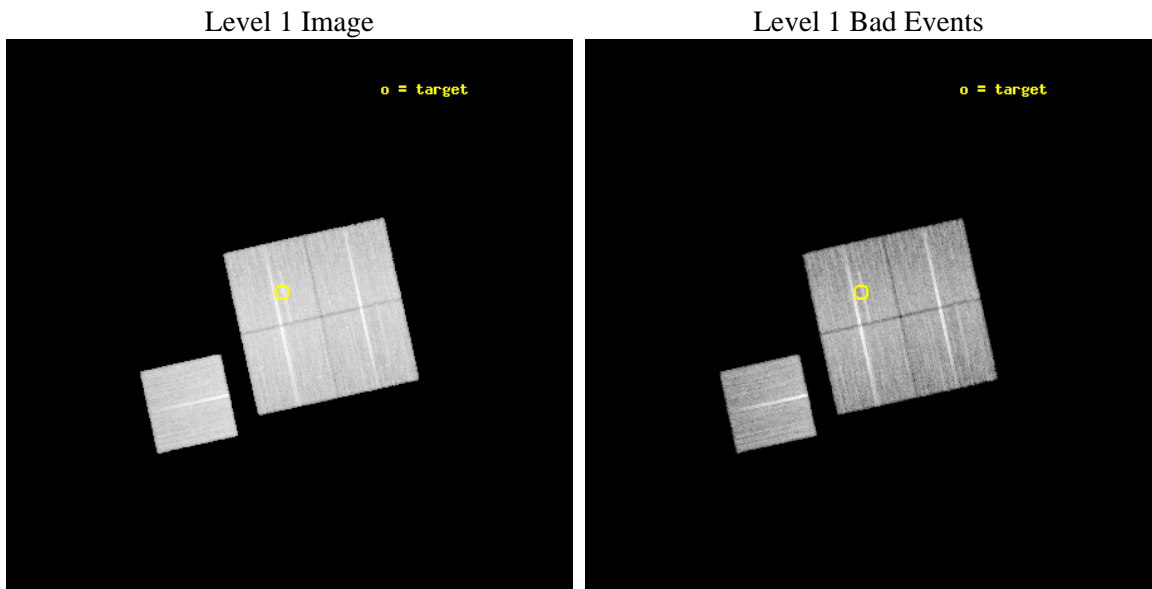
seq_num	800913	Sequence number
obs_id	11859	Observation id
title	Chandra Observations of SZ-selected Galaxy Clusters Detected by the South Pole Telescope	Proposal title
observer	Professor Gordon Garmire	Principal investigator
object	SPT-CL2337-5942	Source name
dtcycle	0	
cycle	P	events from which exps? Prim/Second/Both
ra_targ	354.355	Observer's specified target RA [deg]
dec_targ	-59.708	Observer's specified target Dec [deg]
ra_nom	354.32801037962	Nominal RA [deg]
dec_nom	-59.760660831583	Nominal Dec [deg]
roll_nom	257.55373649614	Nominal Roll [deg]
revision	2	Processing version of data
ontime	20035.177233219	Sum of GTIs [s]
livetime	19773.402892984	Livetime [s]
ontime0	20041.459183812	Sum of GTIs [s]
ontime1	20044.600154161	Sum of GTIs [s]
ontime2	20041.459163904	Sum of GTIs [s]
ontime3	20035.177233219	Sum of GTIs [s]
ontime6	20044.600154161	Sum of GTIs [s]
l2events	78771	Number of level 2 events



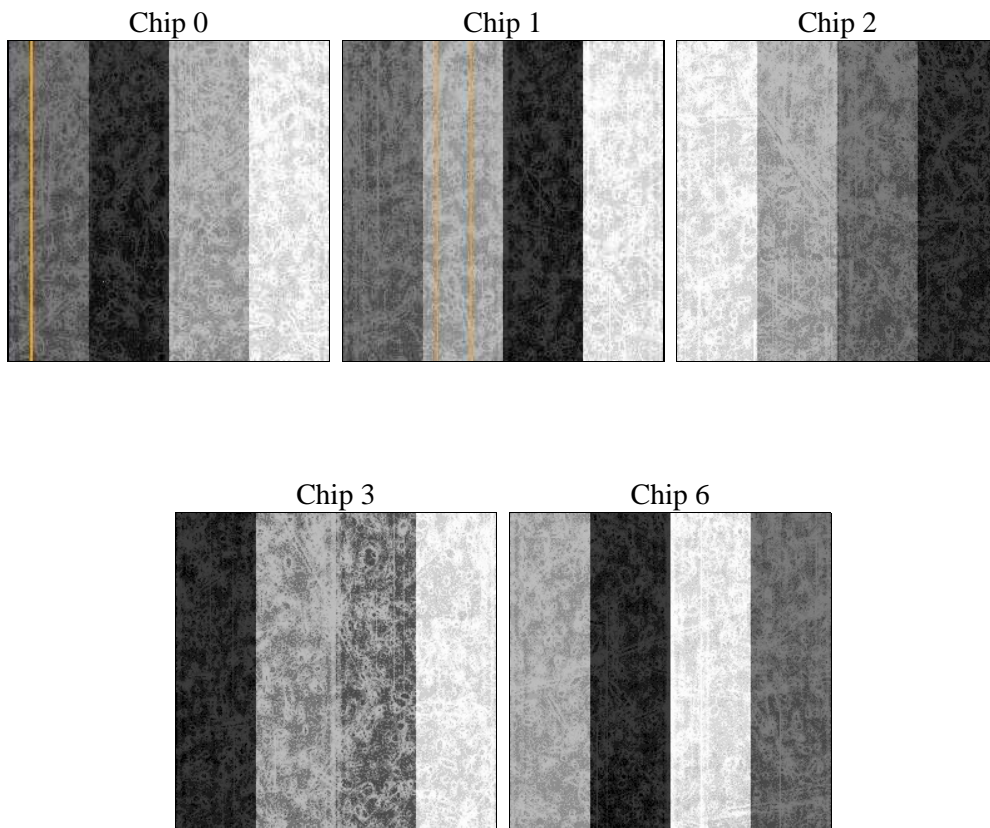
2 OBI

2.1 OBI

2.1.1 Images



2.1.2 Bias



2.1.3 Parameters

obi_num	0	Obi number	sched_exp_time	20000.000000	[s] Scheduled observation exposure time
ascdsver	8.4.5	Processing system revision	ontime	20035.177233219	Sum of GTIs [s]
caldbver	4.4.10	 	ontime0	20041.459183812	Sum of GTIs [s]
date	2012-06-19T09:21:15	Date and time of file creation	ontime1	20044.600154161	Sum of GTIs [s]
revision	2	Processing version of data	ontime2	20041.459163904	Sum of GTIs [s]
			ontime3	20035.177233219	Sum of GTIs [s]
			ontime6	20044.600154161	Sum of GTIs [s]
			l1events	863091	Number of level 1 events

2.1.4 Events

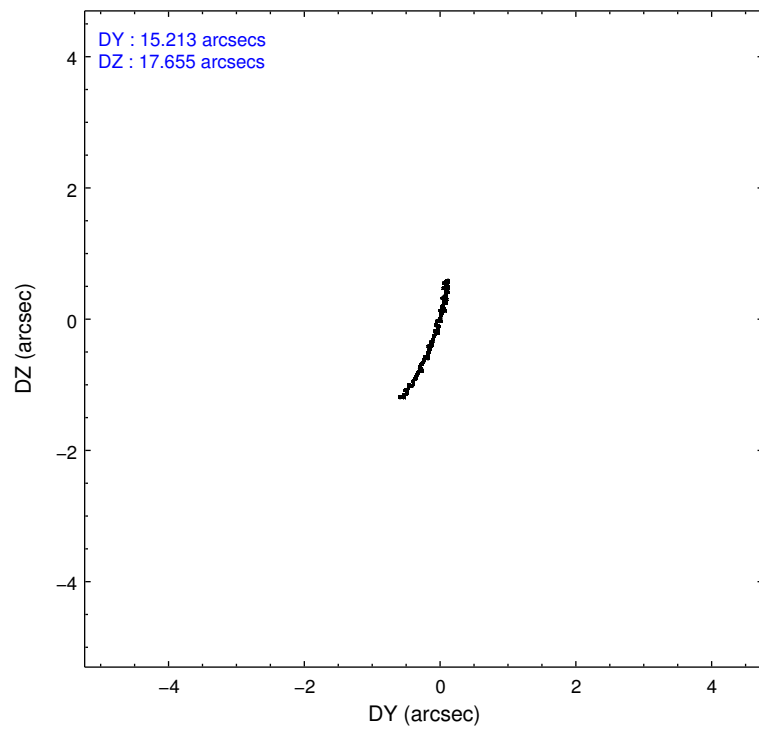
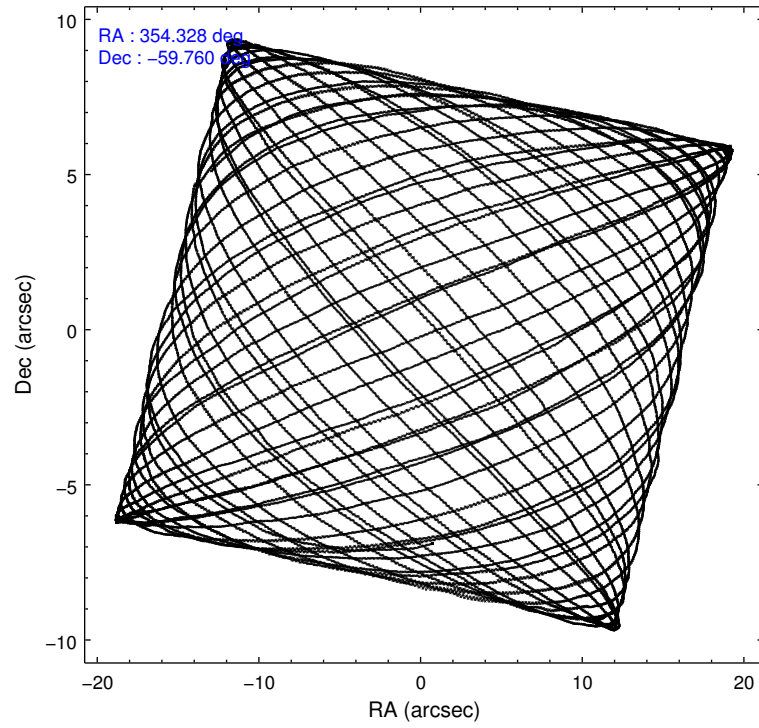
	ccd 0	ccd 1	ccd 2	ccd 3	ccd 6
level 1 events	161585	163854	180849	177301	179502
rejected events	143416	143570	162616	158133	161352
rejected %	88%	87%	89%	89%	89%

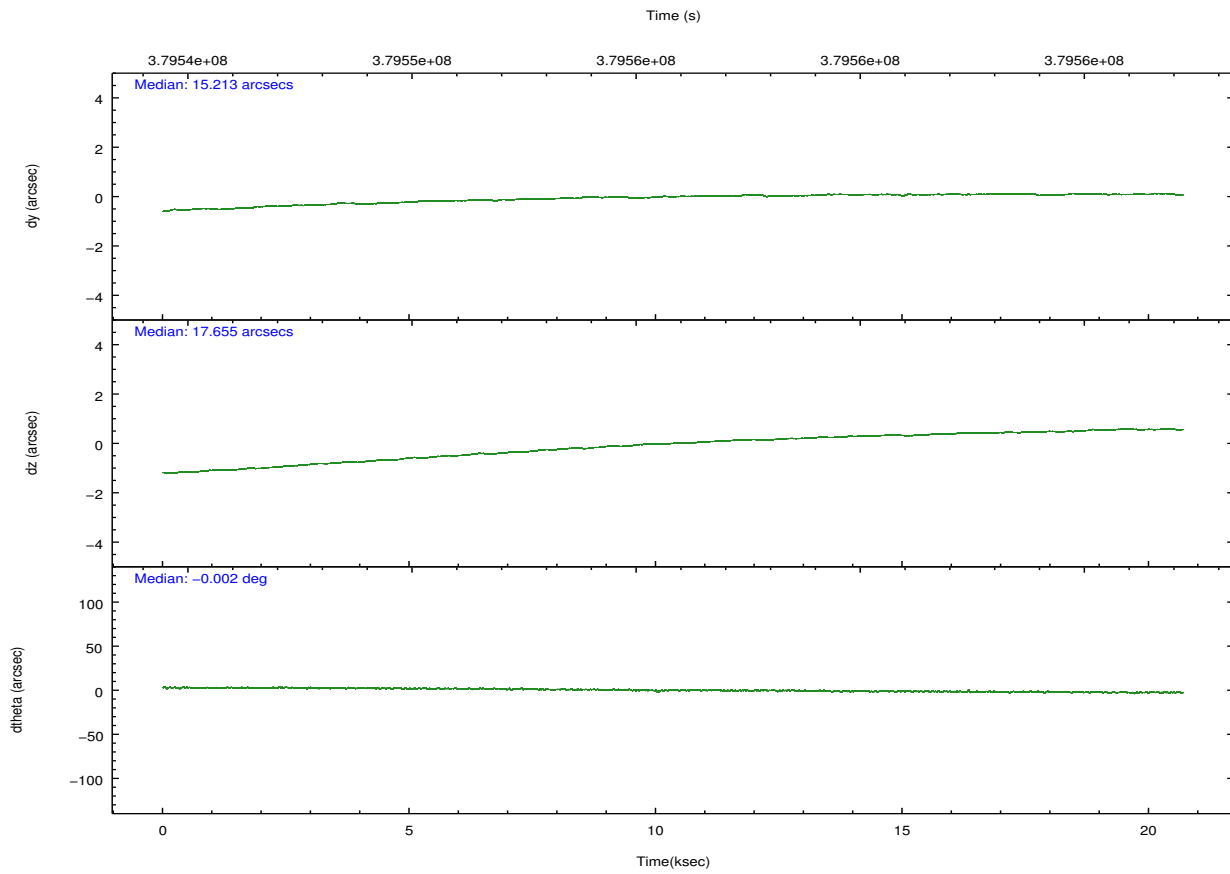
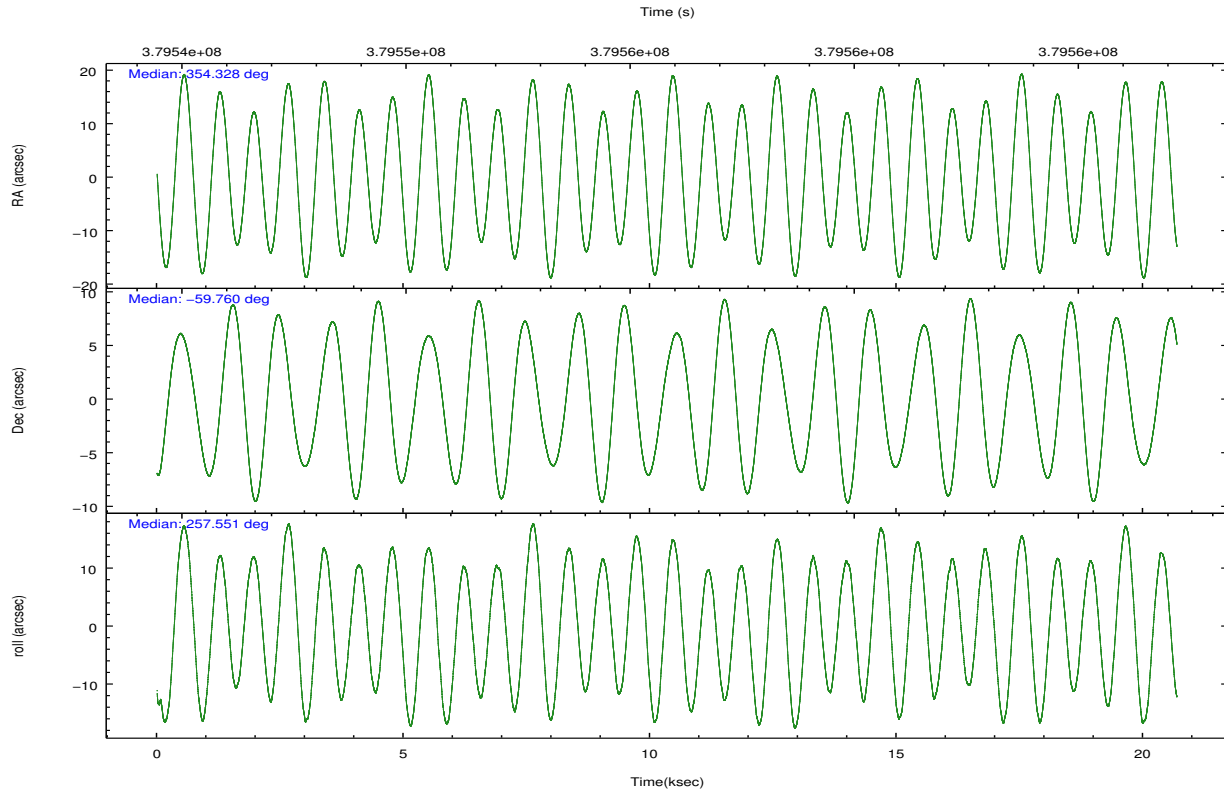
	ccd 0	ccd 1	ccd 2	ccd 3	ccd 6
grade 0 events	6386	7355	6546	7753	6319
	3%	4%	3%	4%	3%
grade 1 events	108	95	126	102	78
	0%	0%	0%	0%	0%
grade 2 events	4501	4670	4507	4003	3996
	2%	2%	2%	2%	2%
grade 3 events	2002	2150	1822	1900	1951
	1%	1%	1%	1%	1%
grade 4 events	1802	2100	1916	1938	1952
	1%	1%	1%	1%	1%
grade 5 events	6469	7072	6360	7515	7276
	4%	4%	3%	4%	4%
grade 6 events	3481	4013	3444	3576	3937
	2%	2%	1%	2%	2%
grade 7 events	136836	136399	156128	150514	153993
	84%	83%	86%	84%	85%

2.2 Compared Parameters

Parameter	Planned	Actual	Parameter	Planned	Actual
Instrument	ACIS	ACIS	Obspar format version number	7	7
Detector	ACIS-01236	ACIS-01236	Obspar file type	PREDICTED	ACTUAL
Grating	NONE	NONE	Obspar update status	NONE	UPDATED
Data mode	VFAINT	VFAINT	Number of optional ACIS chips dropped	0	0
Observation mode	POINTING	POINTING	On-chip summing requested	N	N
[deg] Pointing RA	354.311370	354.3280103796166	Subarray requested	NONE	NONE
[deg] Pointing Dec	-59.734492	-59.76066083158273	Alternating exposures requested	N	N
[deg] Pointing Roll	257.330677	257.553736496141	[s] Primary exposure time	0.000000	3.1
[mm] SIM focus pos	-0.782348	-0.7809083437167272			
[mm] SIM defocus	0	0.001439871863259334			
[mm] SIM translation stage pos	-225.840463	-225.8433433320239			
[mm] SIM translation stage offset	-7.752	-7.749109670905796			
[s] Observation start time (MET)	379546171.184000	379544847.42986			
Observation start date	2010-01-10T21:28:25	2010-01-10T21:07:27			
[s] Observation end time (MET)	379566171.184000	379567451.2435			
Observation end date	2010-01-11T03:01:45	2010-01-11T03:24:11			
Read mode	TIMED	TIMED			

2.3 Aspect



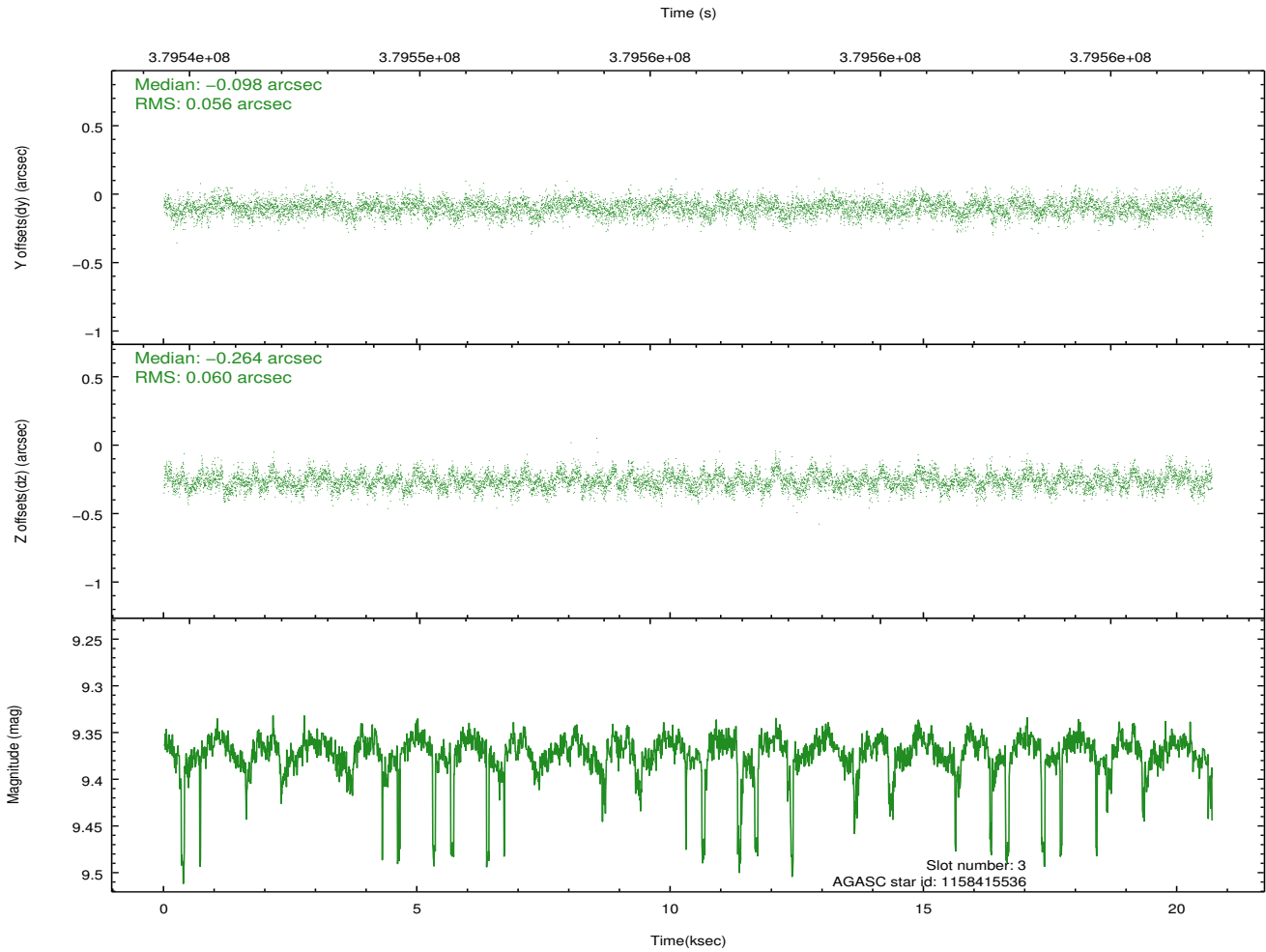
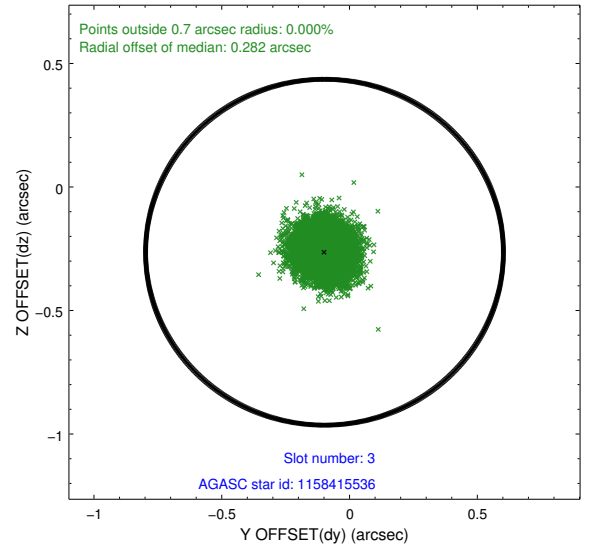
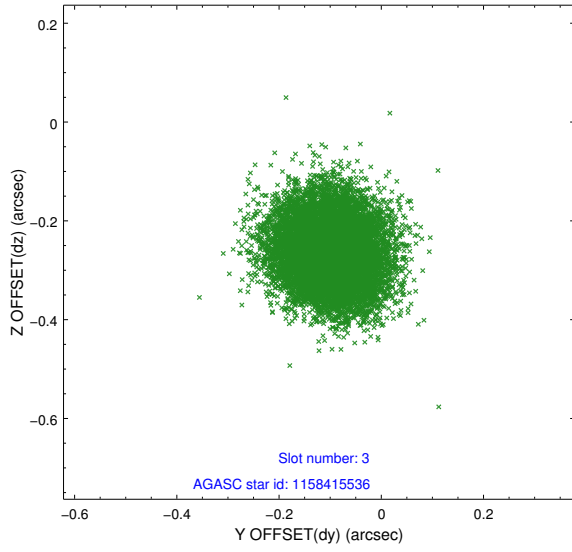


Slot Statistics

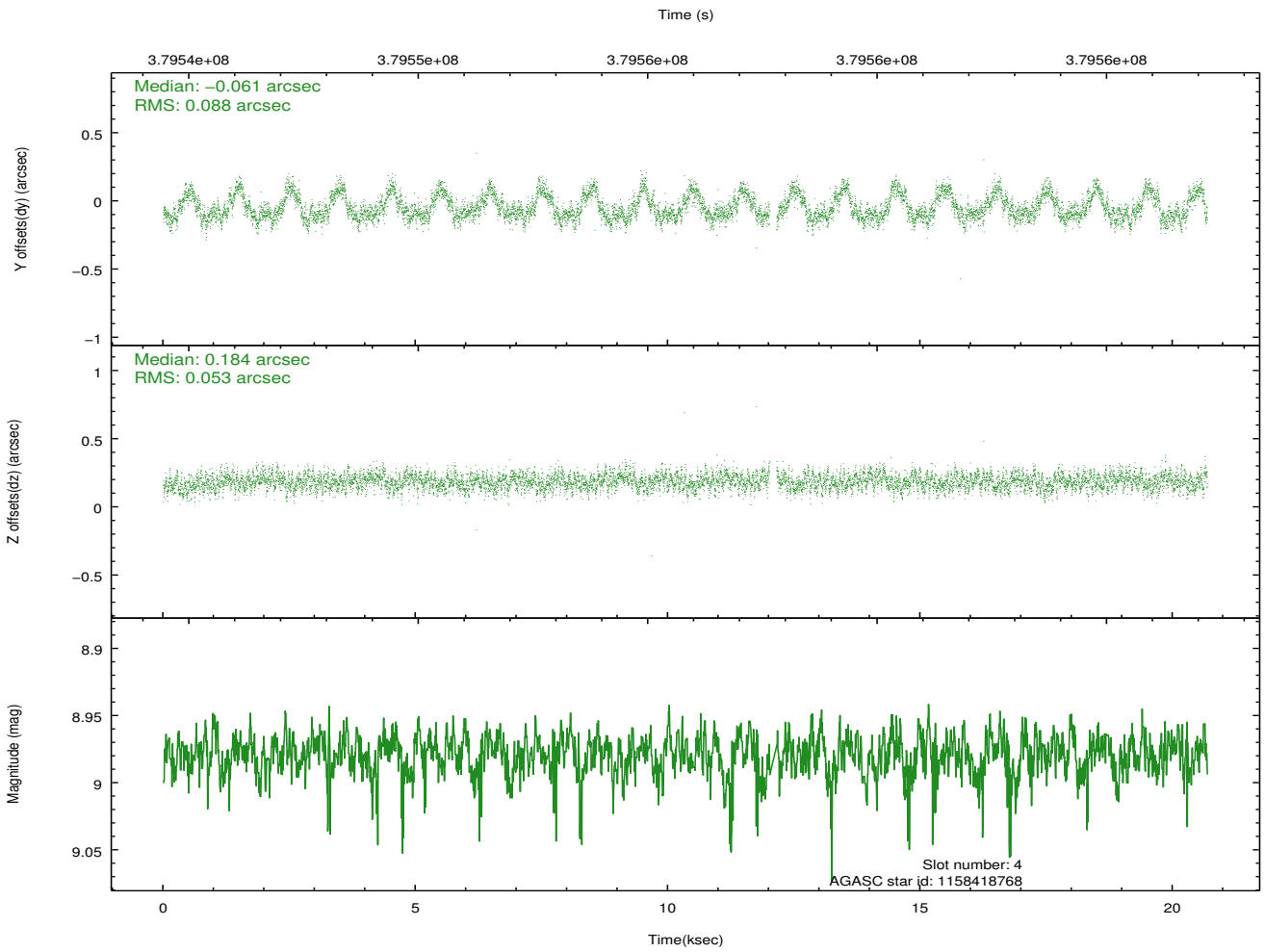
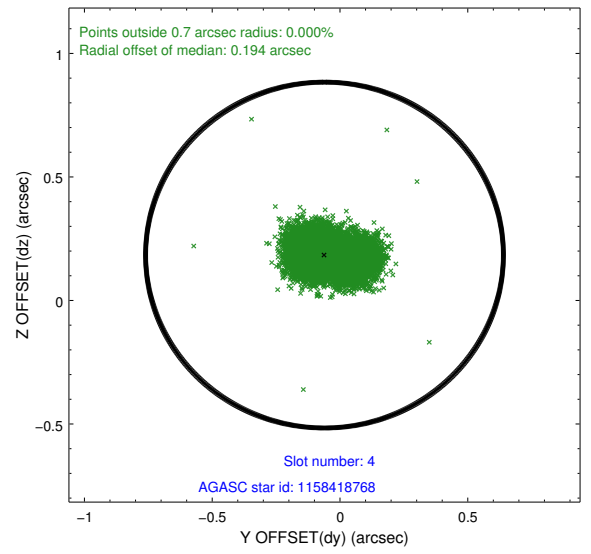
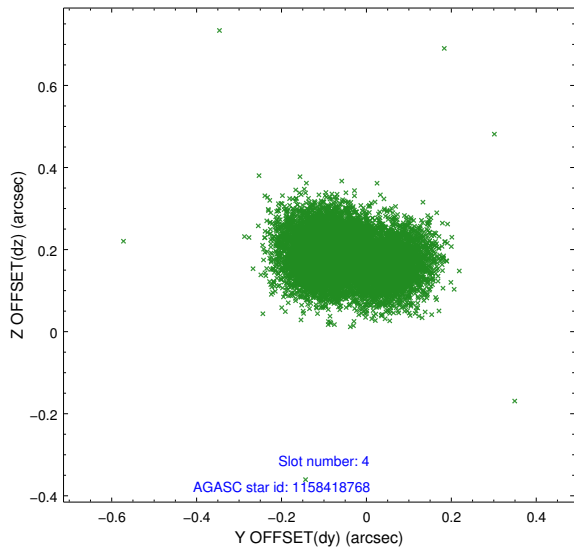
slot	status	id	mag	n_pts	med_dy	med_dz	dr1	dr2	ra	dec	mean_y	mean_z
0	FID	ACIS-I-1	6.98	5045	0.124	-0.059	0.018	0.030	0.000000	0.000000	924.31	-1000.33
1	FID	ACIS-I-5	6.97	5046	-0.268	0.113	0.012	0.019	0.000000	0.000000	-1824.10	897.20
2	FID	ACIS-I-6	6.99	5044	0.053	0.020	0.011	0.019	0.000000	0.000000	389.58	1541.82
3	GUIDE	1158415536	9.37	10029	-0.098	-0.264	0.087	0.140	354.675840	-59.236536	-1894.12	262.30
4	GUIDE	1158418768	8.98	10016	-0.061	0.184	0.109	0.179	353.576731	-59.080548	-1991.12	-1840.11
5	GUIDE	1158423400	9.28	10078	0.064	0.018	0.103	0.162	354.318921	-59.490370	-859.92	-179.30
6	GUIDE	1158424968	8.50	10087	0.002	0.093	0.070	0.112	353.381792	-59.919127	1028.38	-1487.58
7	GUIDE	1196306600	9.53	10081	0.086	-0.033	0.127	0.216	355.056440	-60.185166	1298.40	1658.90

2.4 Star Slots

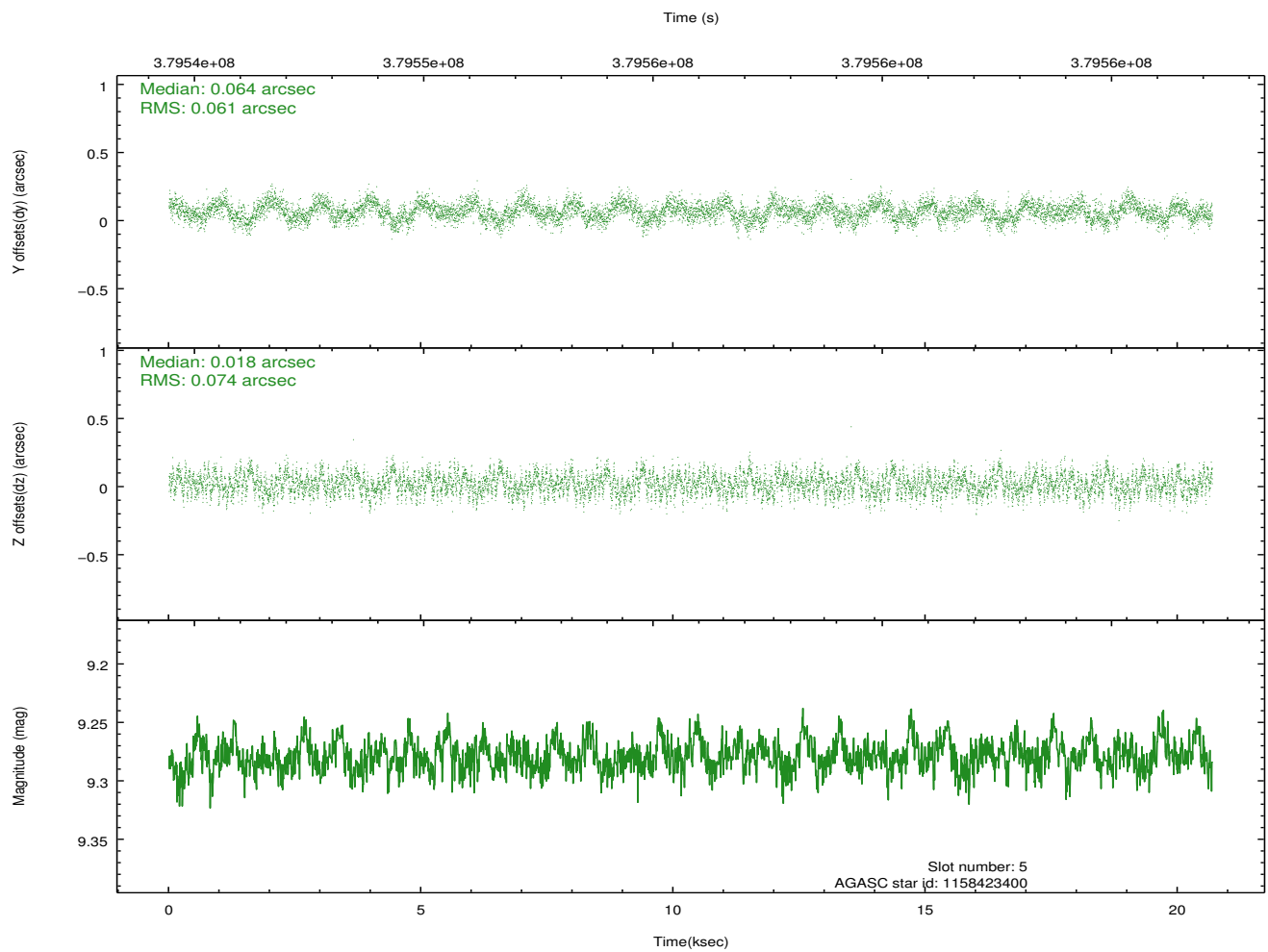
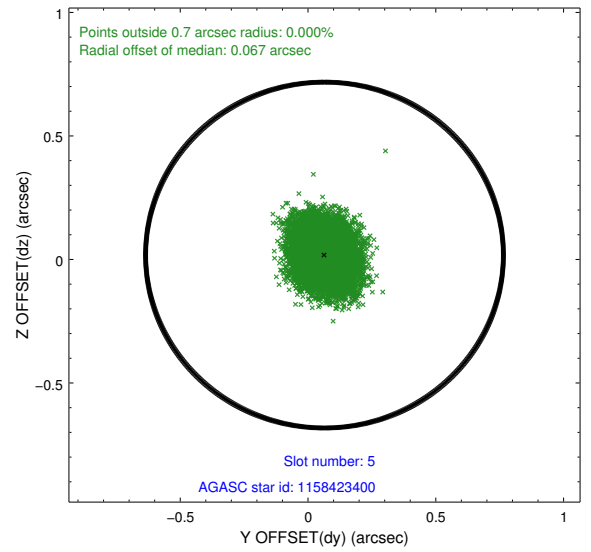
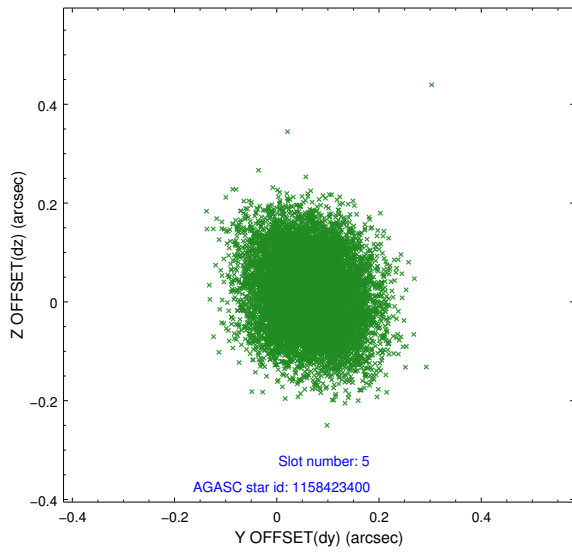
2.4.1 Slot 3



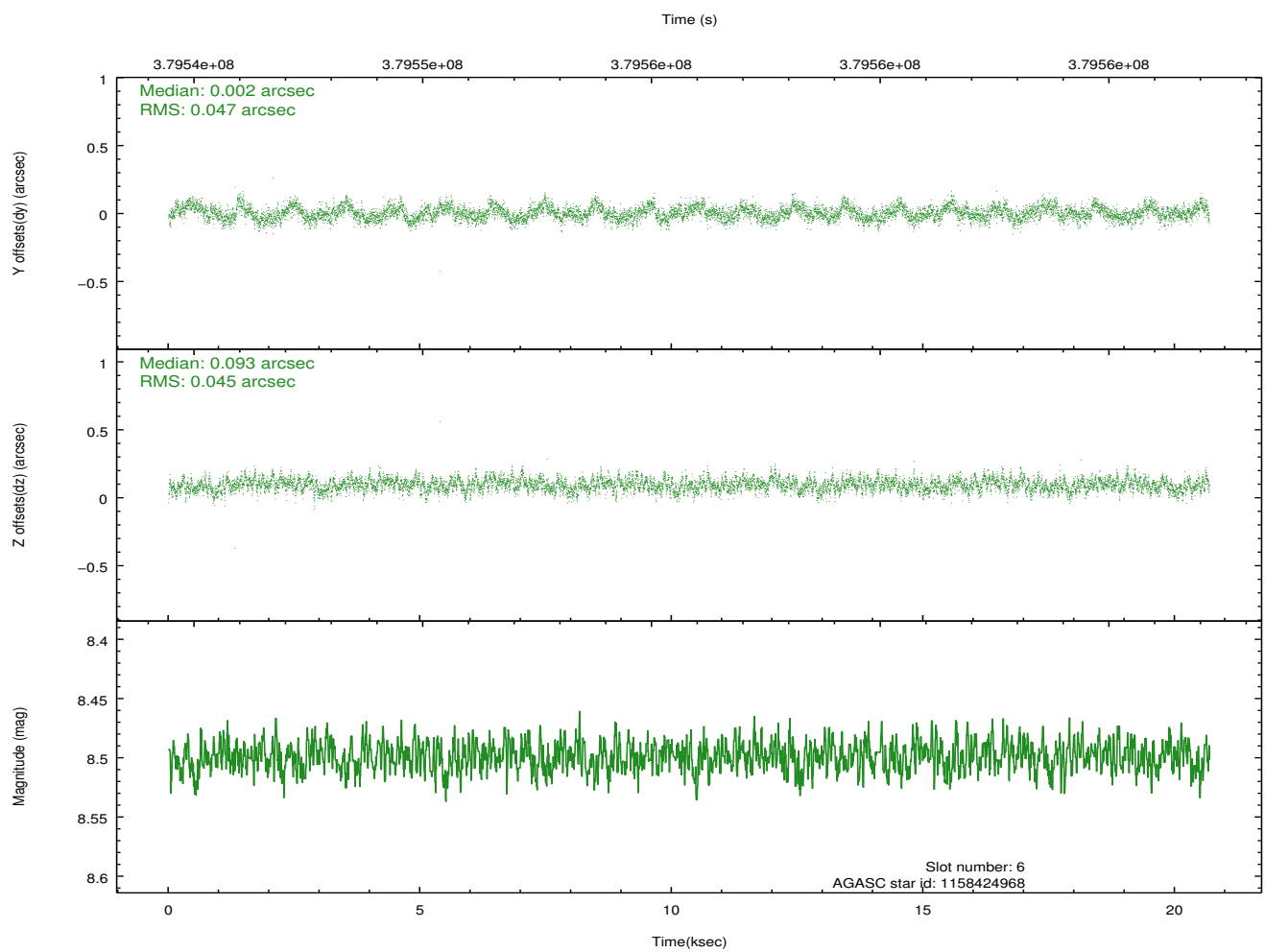
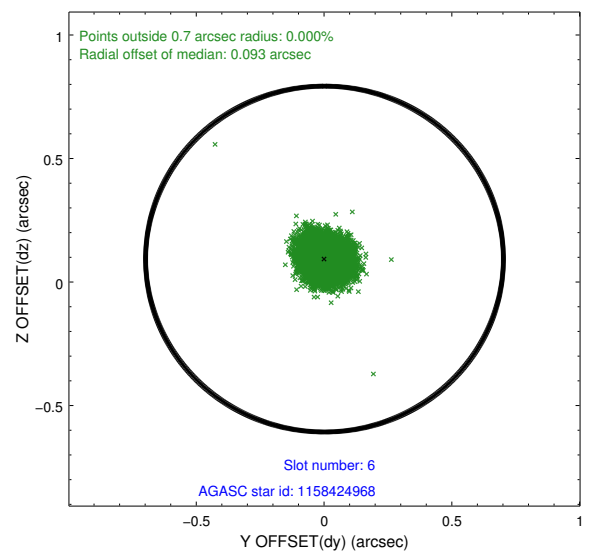
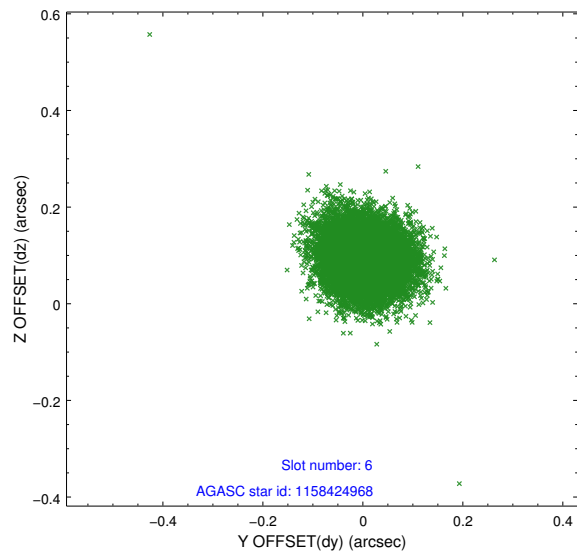
2.4.2 Slot 4



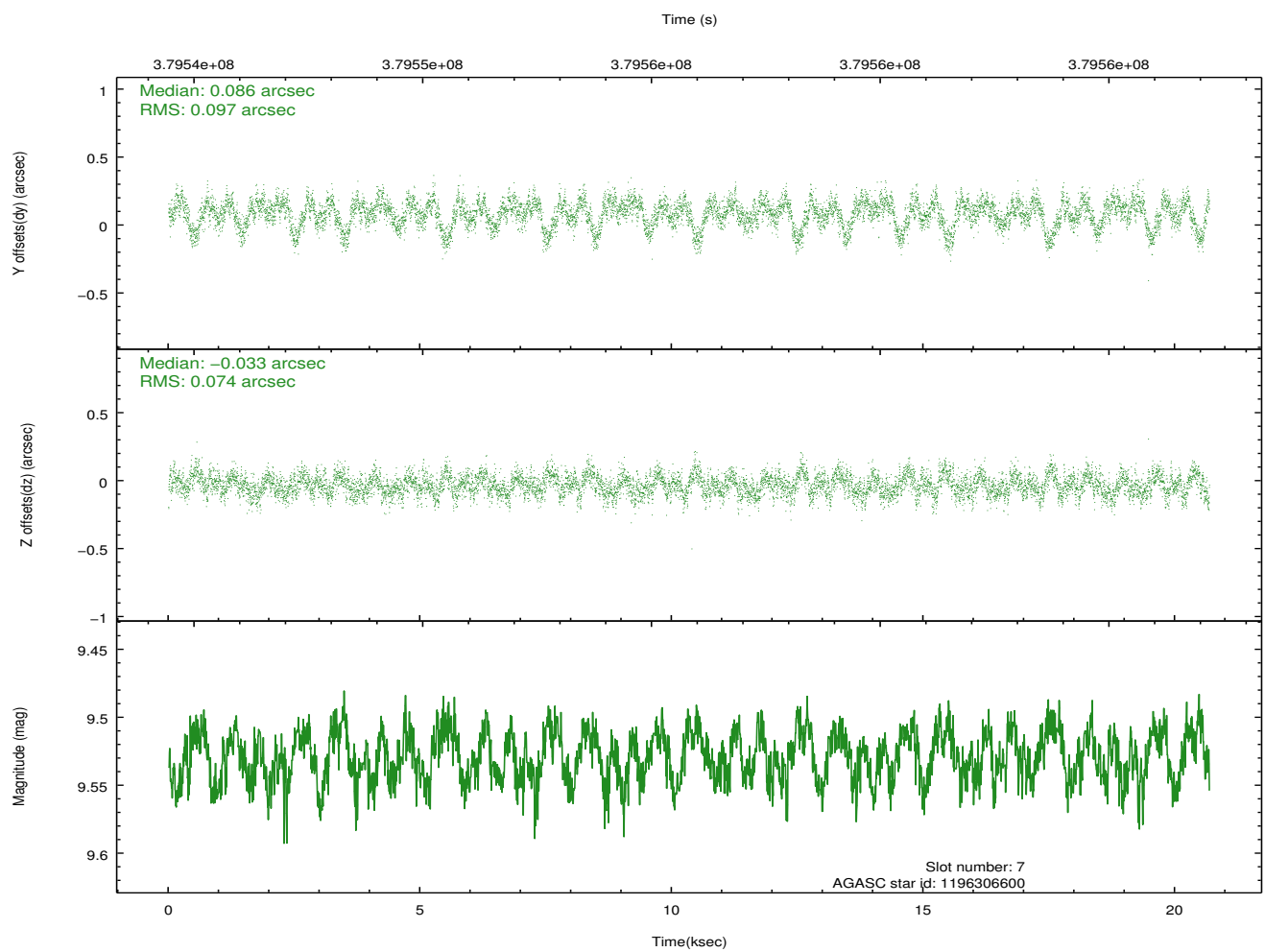
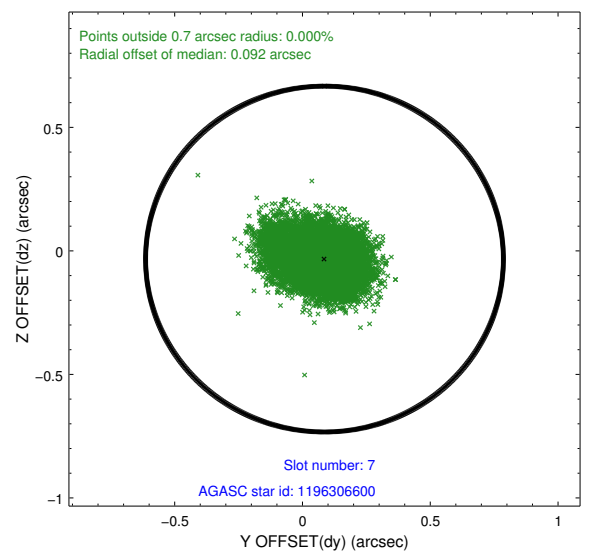
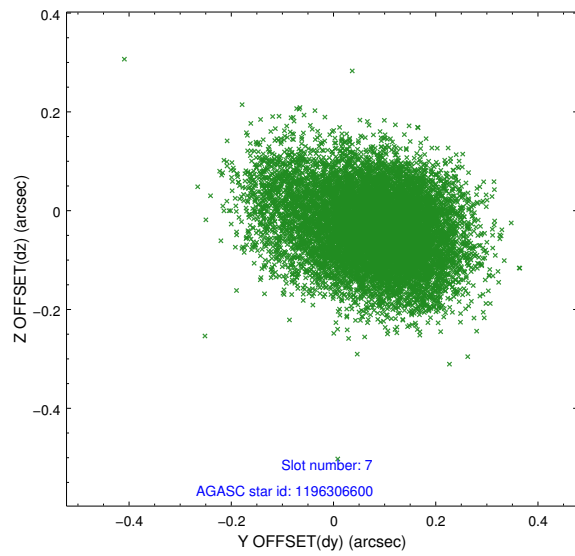
2.4.3 Slot 5



2.4.4 Slot 6

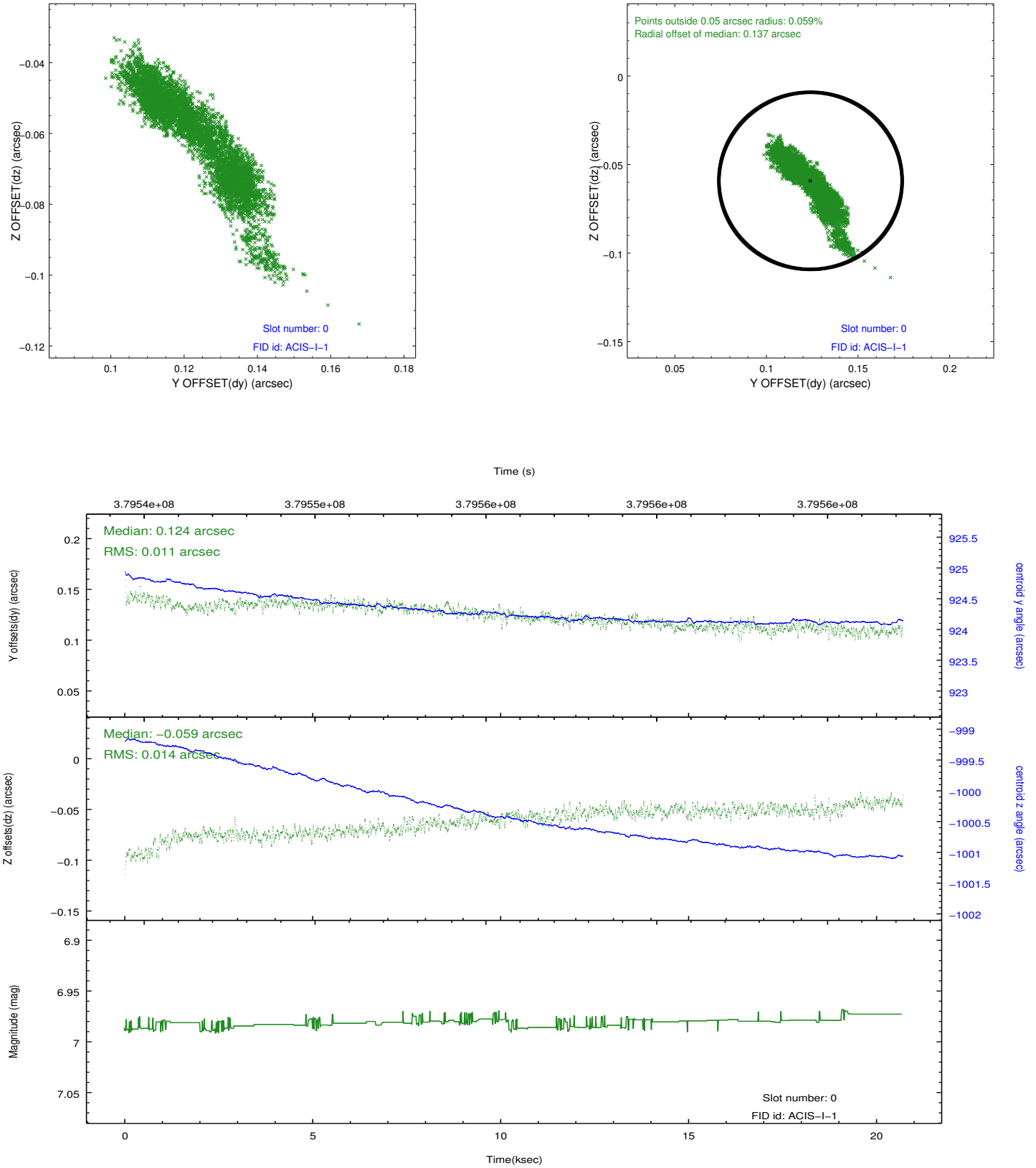


2.4.5 Slot 7

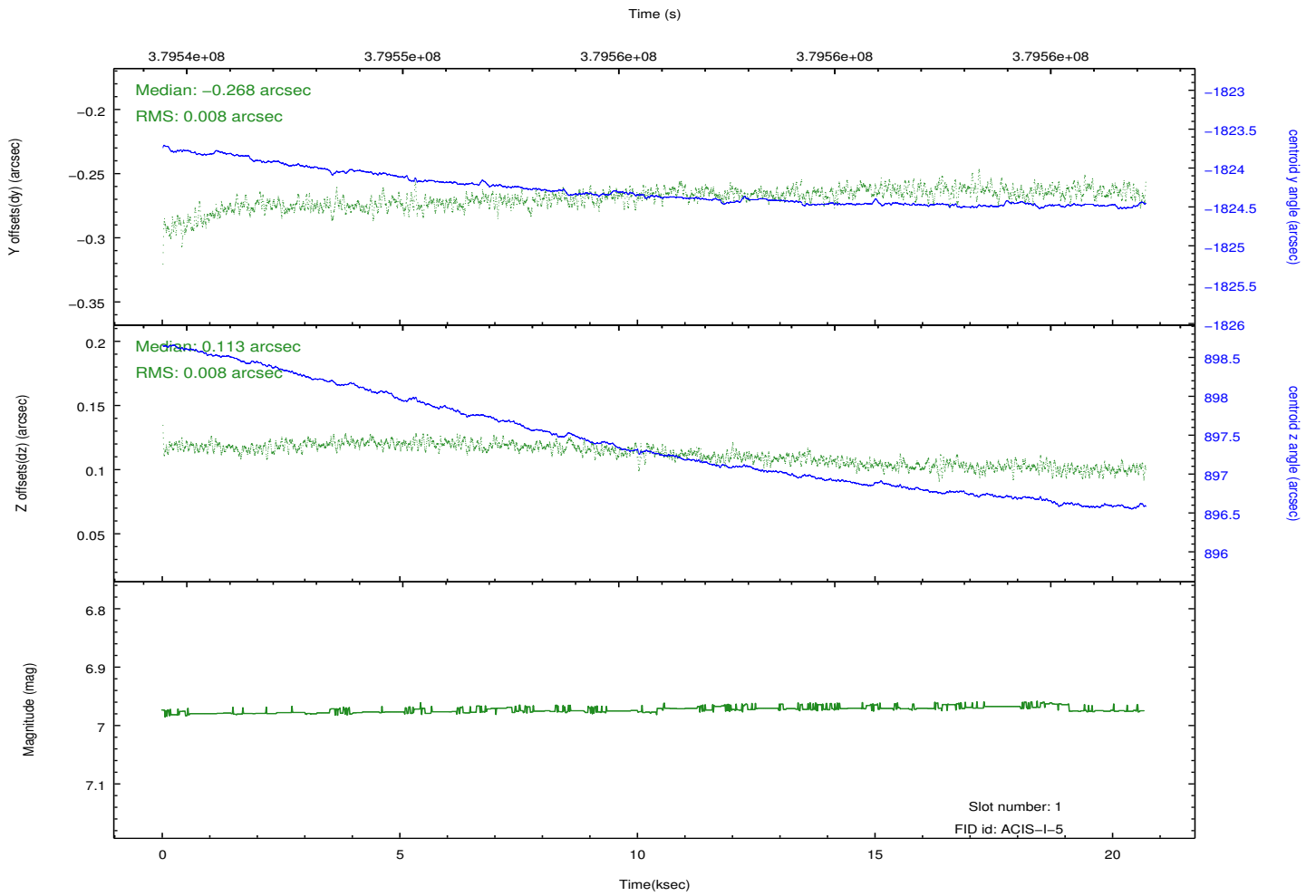
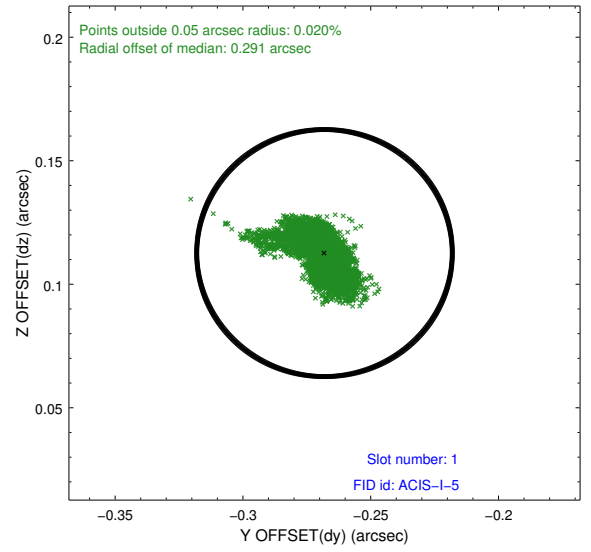
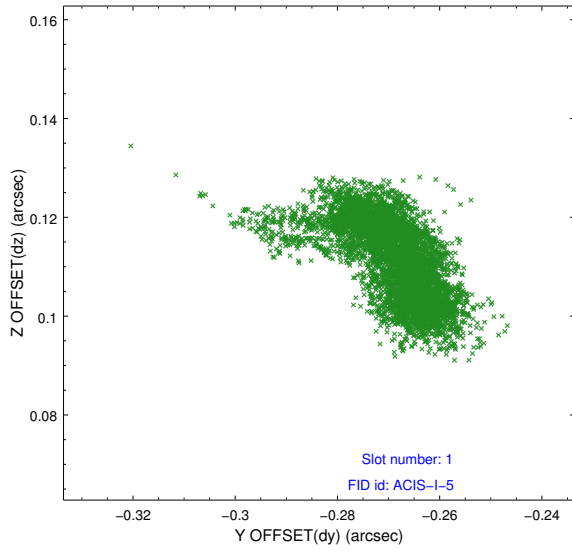


2.5 FID Slots

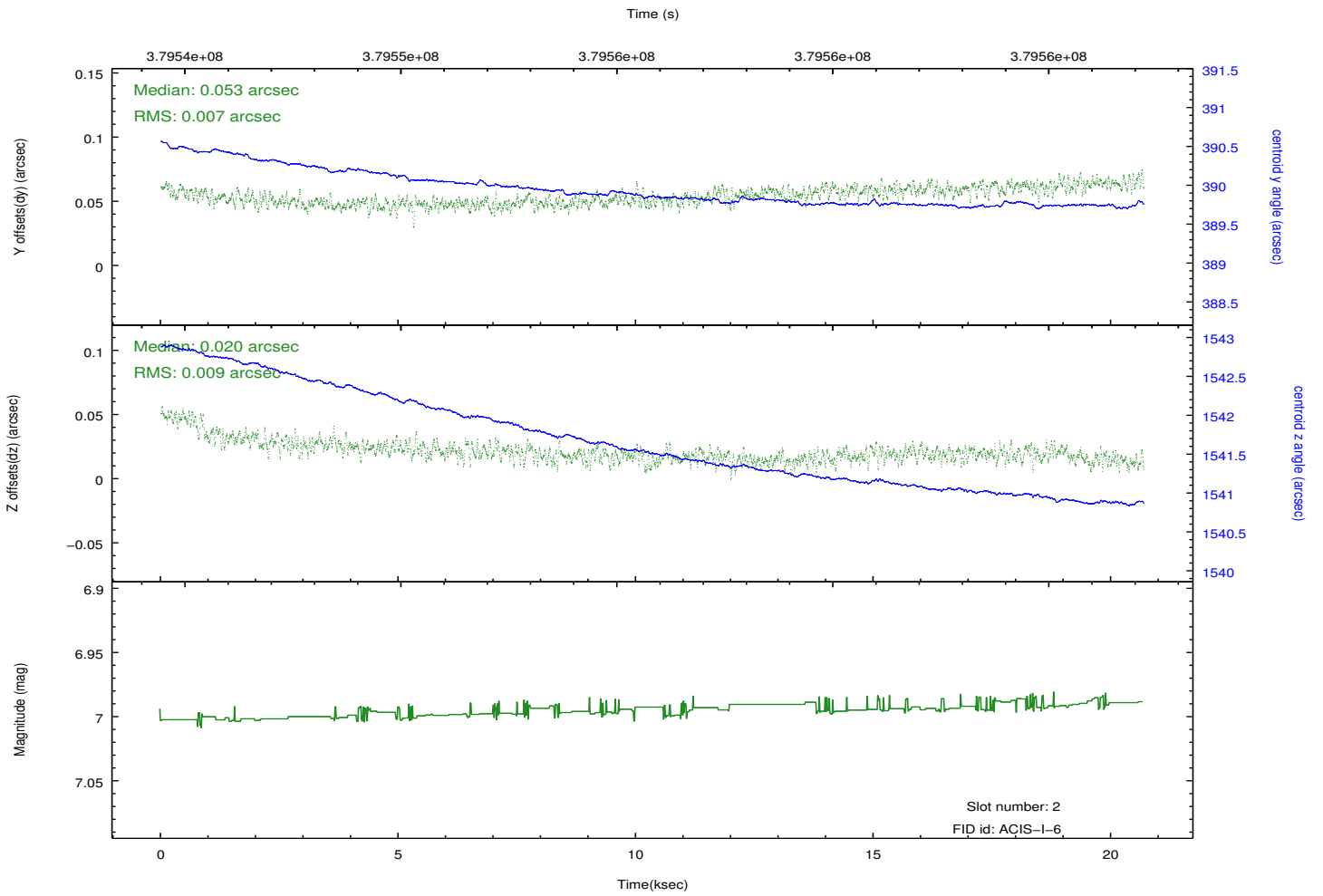
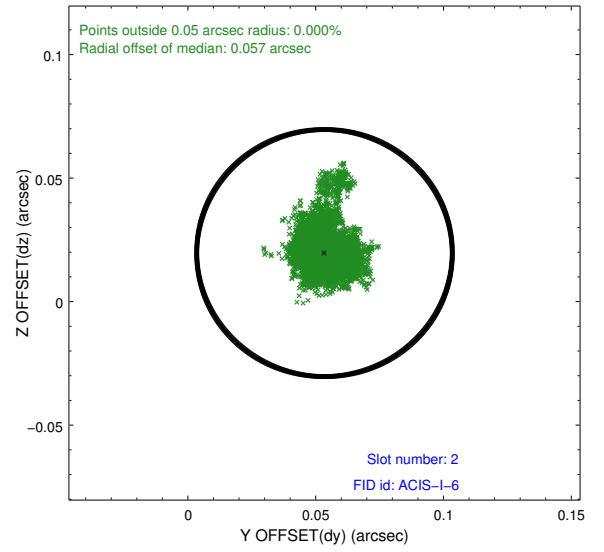
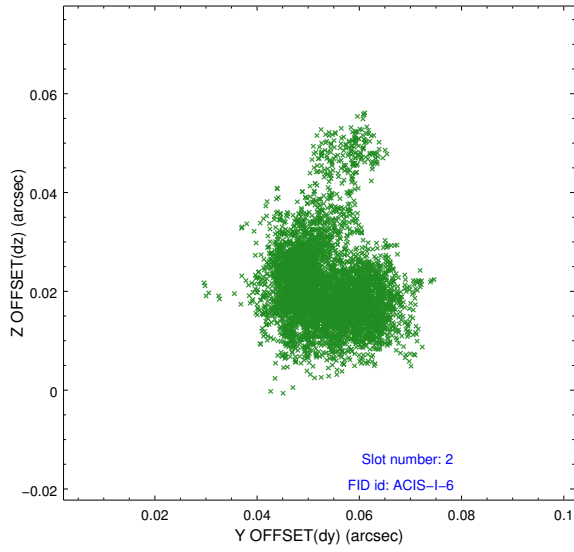
2.5.1 Slot 0



2.5.2 Slot 1



2.5.3 Slot 2



A Summary

A.1 Status

V&V Scientist	Jen Lauer
V&V Date (YYYY-MM-DD)	2012.06.25
V&V Edition	1
V&V Disposition and Status	OK
V&V Charge Time	20.035177233219

A.2 Comments