

V&V Reference Report

L2 ASCDS Version : 8.4.5

Observation 11979 - L2 Version 2
Chandra X-Ray Center

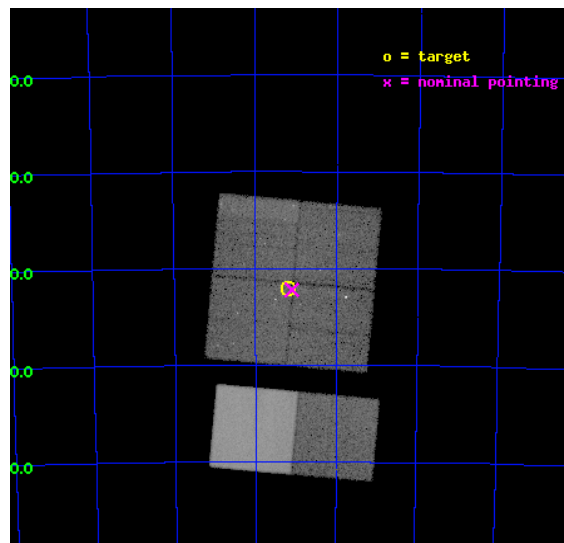
L2 Processing Date : Jun 24 2012

Contents

1	Front	2
2	OBI	3
2.1	OBI	3
2.1.1	Images	3
2.1.2	Bias	3
2.1.3	Parameters	4
2.1.4	Events	4
2.2	Compared Parameters	5
2.3	Aspect	6
2.4	Star Slots	9
2.4.1	Slot 3	9
2.4.2	Slot 4	10
2.4.3	Slot 5	11
2.4.4	Slot 6	12
2.4.5	Slot 7	13
2.5	FID Slots	14
2.5.1	Slot 0	14
2.5.2	Slot 1	15
2.5.3	Slot 2	16
A	Summary	17
A.1	Status	17
A.2	Comments	17

1 Front

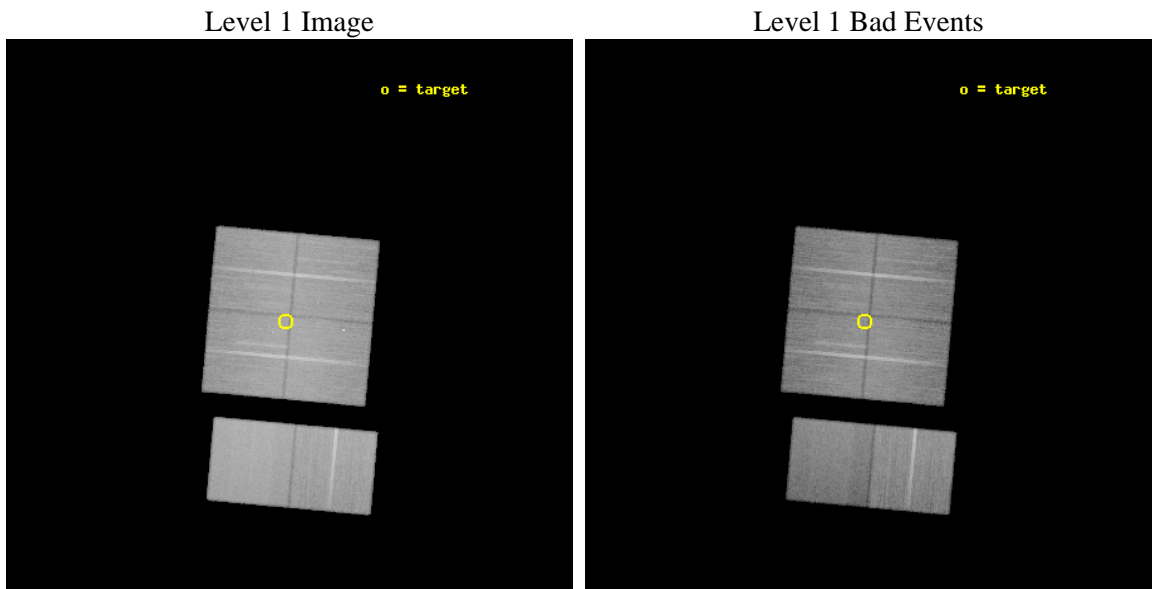
seq_num	200617	Sequence number
obs_id	11979	Observation id
title	Cosmic archaeology with Chandra: from a supergiant shell to young stellar objects in NGC 602	Proposal title
observer	Dr. Lidia Oskinova	Principal investigator
object	NGC 602	Source name
dtcycle	0	
cycle	P	events from which exps? Prim/Second/Both
ra_targ	22.301667	Observer's specified target RA [deg]
dec_targ	-73.533806	Observer's specified target Dec [deg]
ra_nom	22.275363247633	Nominal RA [deg]
dec_nom	-73.536889574758	Nominal Dec [deg]
roll_nom	185.18345499063	Nominal Roll [deg]
revision	2	Processing version of data
ontime	36047.99986577	Sum of GTIs [s]
livetime	35591.53838597	Livetime [s]
ontime0	36047.99986577	Sum of GTIs [s]
ontime1	36047.99986577	Sum of GTIs [s]
ontime2	36047.99986577	Sum of GTIs [s]
ontime3	36047.99986577	Sum of GTIs [s]
ontime6	36044.758865535	Sum of GTIs [s]
ontime7	36047.99986577	Sum of GTIs [s]
l2events	270983	Number of level 2 events



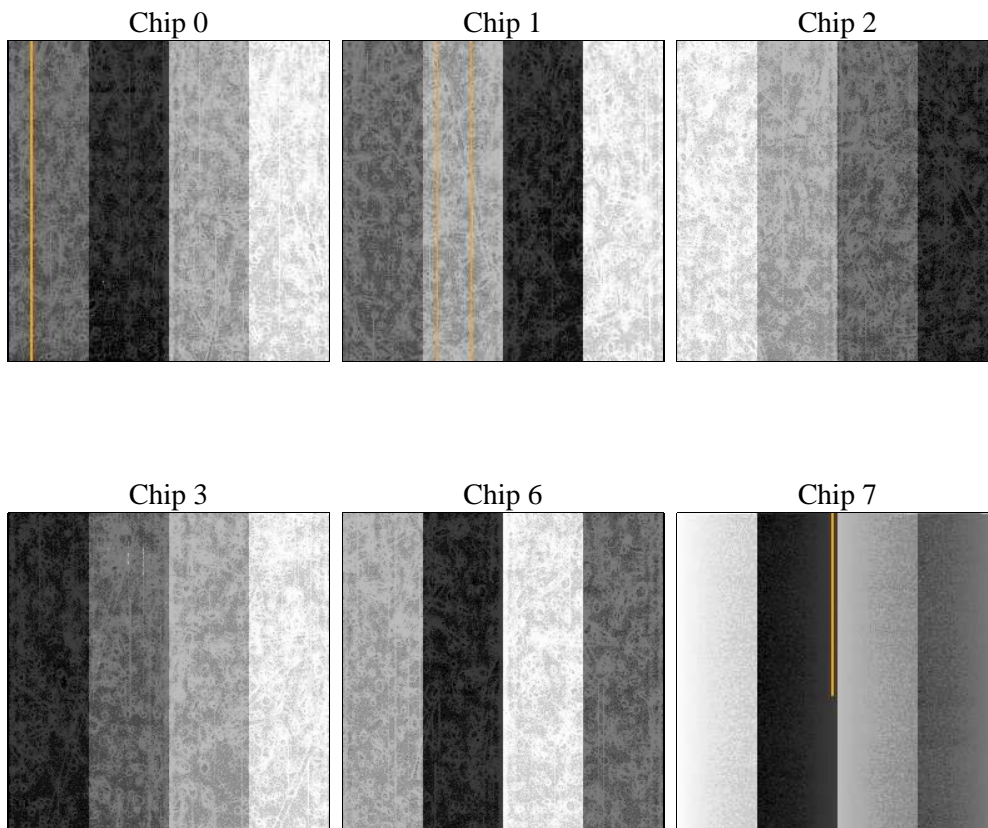
2 OBI

2.1 OBI

2.1.1 Images



2.1.2 Bias



2.1.3 Parameters

obi_num	0	Obi number	sched_exp_time	36000.000000	[s] Scheduled observation exposure time
ascdsver	8.4.5	Processing system revision	ontime	36047.99986577	Sum of GTIs [s]
caldbver	4.4.10	 	ontime0	36047.99986577	Sum of GTIs [s]
date	2012-06-24T08:33:09	Date and time of file creation	ontime1	36047.99986577	Sum of GTIs [s]
revision	2	Processing version of data	ontime2	36047.99986577	Sum of GTIs [s]
			ontime3	36047.99986577	Sum of GTIs [s]
			ontime6	36044.758865535	Sum of GTIs [s]
			ontime7	36047.99986577	Sum of GTIs [s]
			l1events	1671345	Number of level 1 events

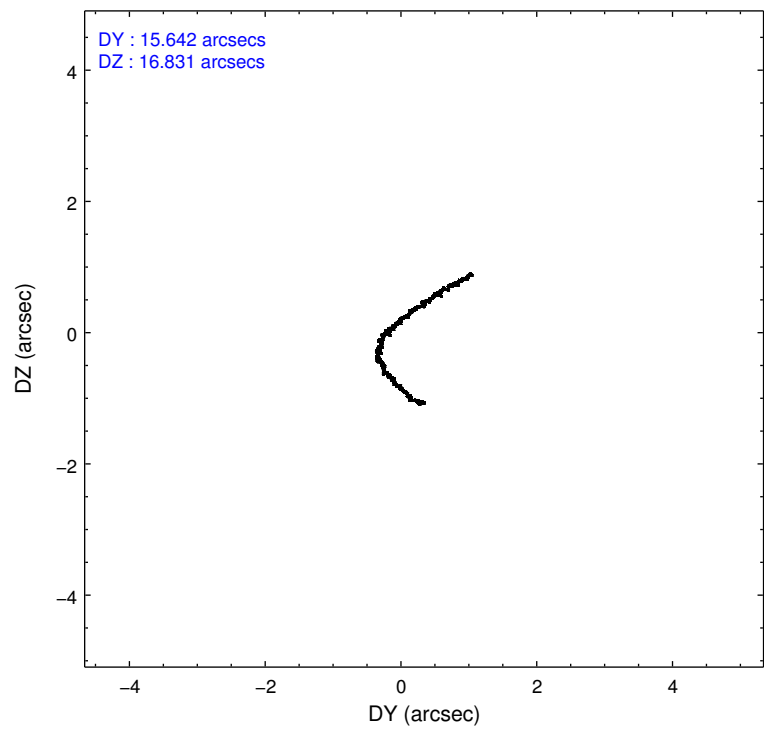
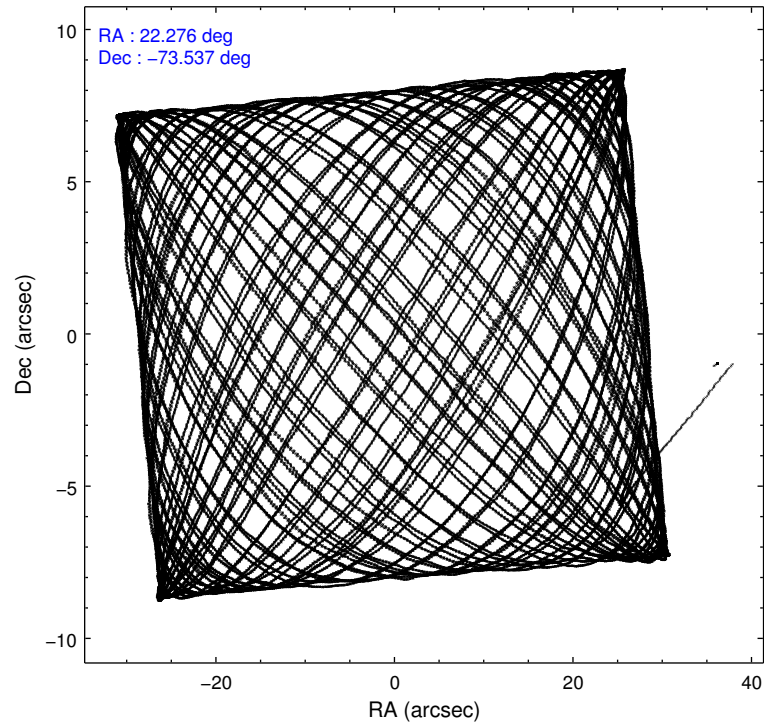
2.1.4 Events

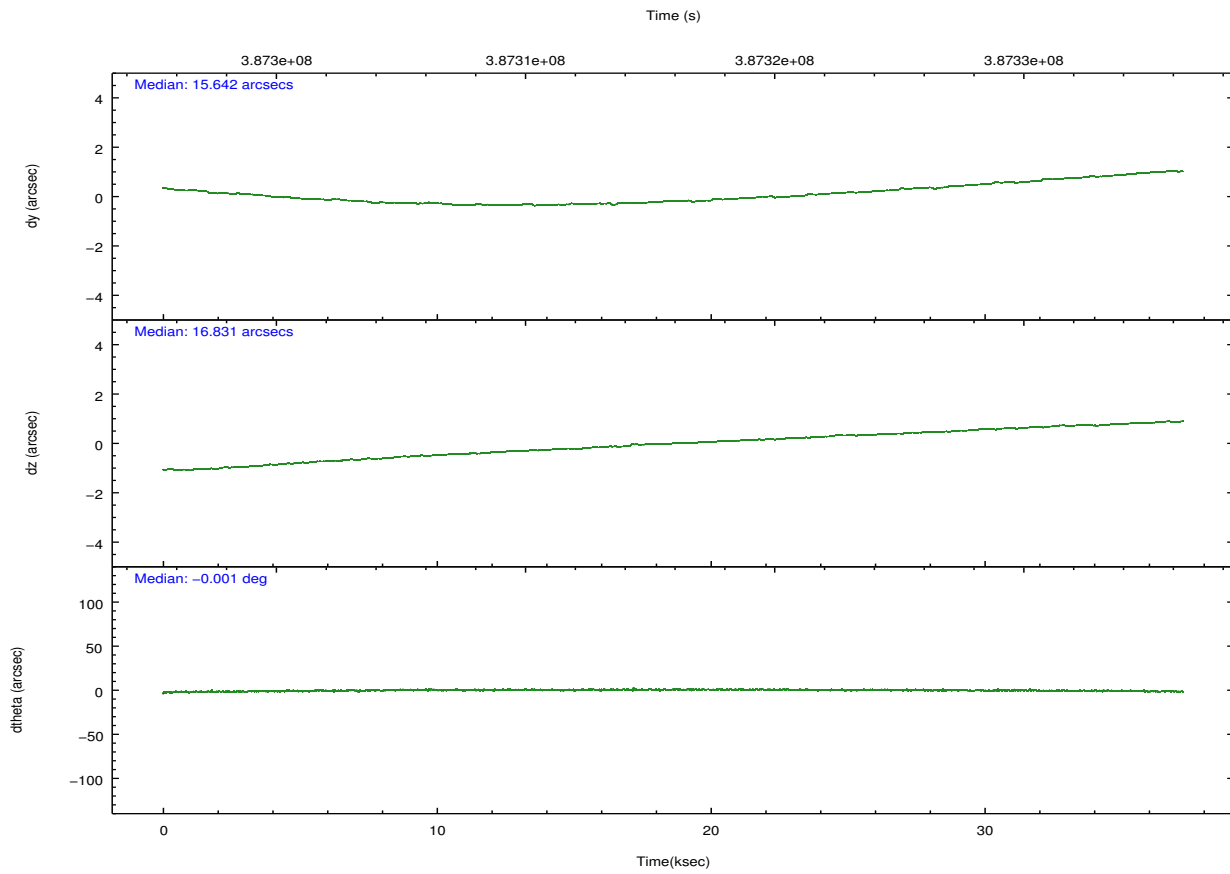
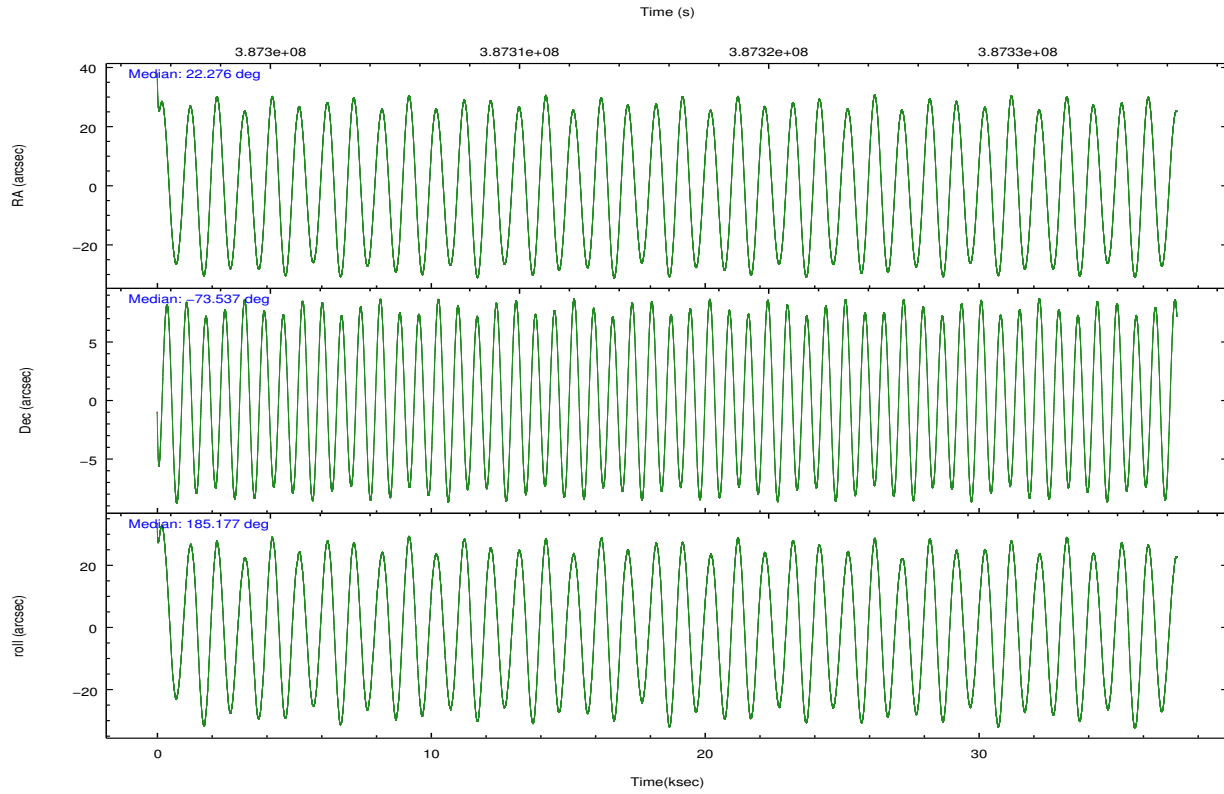
	ccd 0	ccd 1	ccd 2	ccd 3	ccd 6	ccd 7		ccd 0	ccd 1	ccd 2	ccd 3	ccd 6	ccd 7
level 1 events	249950	257373	282783	269327	283368	328544	grade 0 events	10083	11899	12001	9863	10161	13497
rejected events	220640	224133	251656	241632	253358	180086		4%	4%	4%	3%	3%	4%
rejected %	88%	87%	88%	89%	89%	54%	grade 1 events	128	123	154	158	178	422
								0%	0%	0%	0%	0%	0%
							grade 2 events	7299	7773	7296	6152	6964	30516
								2%	3%	2%	2%	2%	9%
							grade 3 events	3146	3451	3096	2998	3145	13421
								1%	1%	1%	1%	1%	4%
							grade 4 events	3013	3415	3116	3037	3044	12952
								1%	1%	1%	1%	1%	3%
							grade 5 events	10880	11548	10423	12327	12252	34184
								4%	4%	3%	4%	4%	10%
							grade 6 events	5771	6706	5620	5654	6699	78084
								2%	2%	1%	2%	2%	23%
							grade 7 events	209630	212458	241077	229138	240925	145468
								83%	82%	85%	85%	85%	44%

2.2 Compared Parameters

Parameter	Planned	Actual	Parameter	Planned	Actual
Instrument	ACIS	ACIS	Obspar format version number	7	7
Detector	ACIS-012367	ACIS-012367	Obspar file type	PREDICTED	ACTUAL
Grating	NONE	NONE	Obspar update status	NONE	UPDATED
Data mode	FAINT	FAINT	CCD I0 on	Y	Y
Observation mode	POINTING	POINTING	CCD I1 on	Y	Y
[deg] Pointing RA	22.354307	22.27536324763267	CCD I2 on	Y	Y
[deg] Pointing Dec	-73.520938	-73.53688957475813	CCD I3 on	Y	Y
[deg] Pointing Roll	185.050478	185.1834549906321	CCD S0 on	N	N
[mm] SIM focus pos	-0.782348	-0.7809083437167272	CCD S1 on	N	N
[mm] SIM defocus	0	0.001439871863259334	CCD S2 on	O1	Y
[mm] SIM translation stage pos	-233.592463	-233.5874344608287	CCD S3 on	Y	Y
[mm] SIM translation stage offset	0	-0.005018542100998502	CCD S4 on	N	N
[s] Observation start time (MET)	387298535.184000	387296389.82293	CCD S5 on	N	N
Observation start date	2010-04-10T14:54:29	2010-04-10T14:19:49	Number of optional ACIS chips dropped	0	0
[s] Observation end time (MET)	387334535.184000	387335304.97491	On-chip summing requested	N	N
Observation end date	2010-04-11T00:54:29	2010-04-11T01:08:24	Subarray requested	NONE	NONE
Read mode	TIMED	TIMED	Alternating exposures requested	N	N
			[s] Primary exposure time	0.000000	3.2

2.3 Aspect



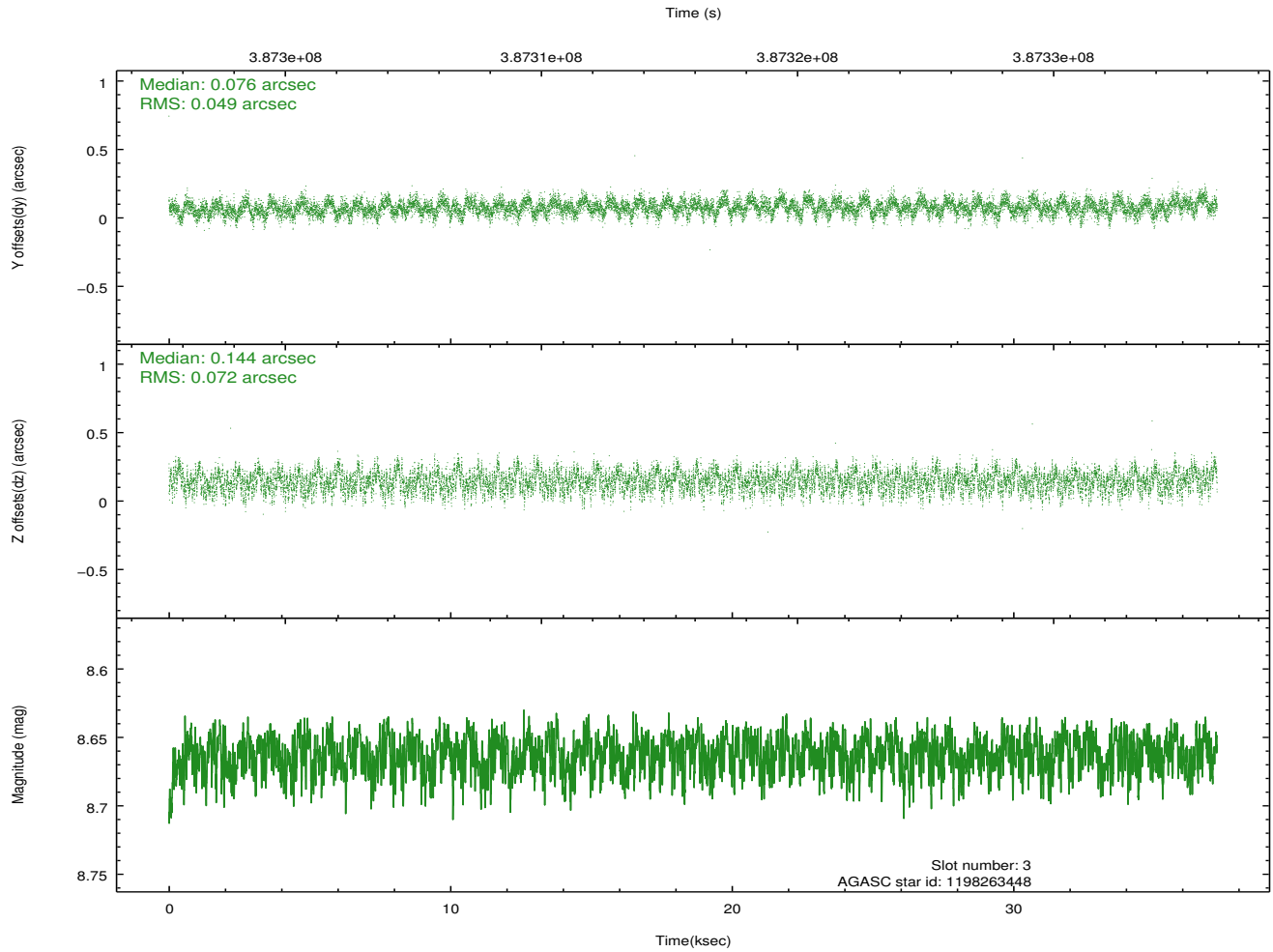
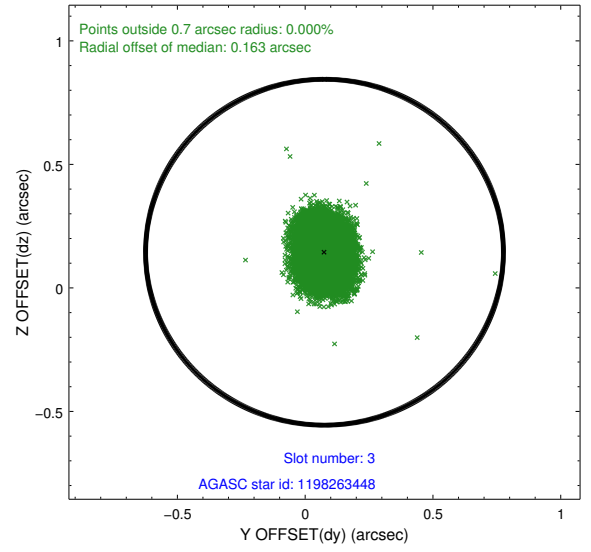
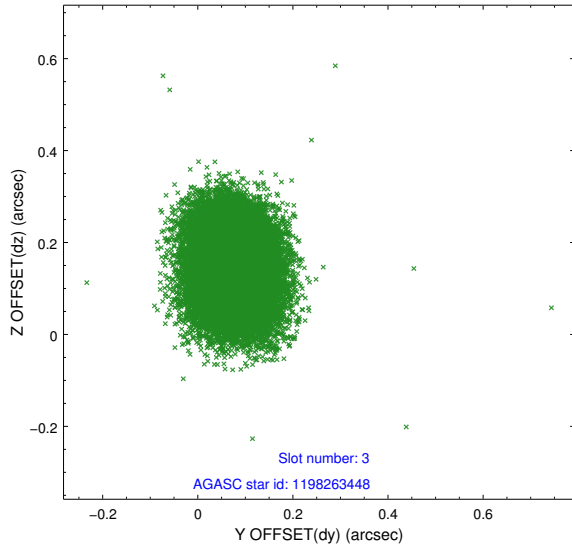


Slot Statistics

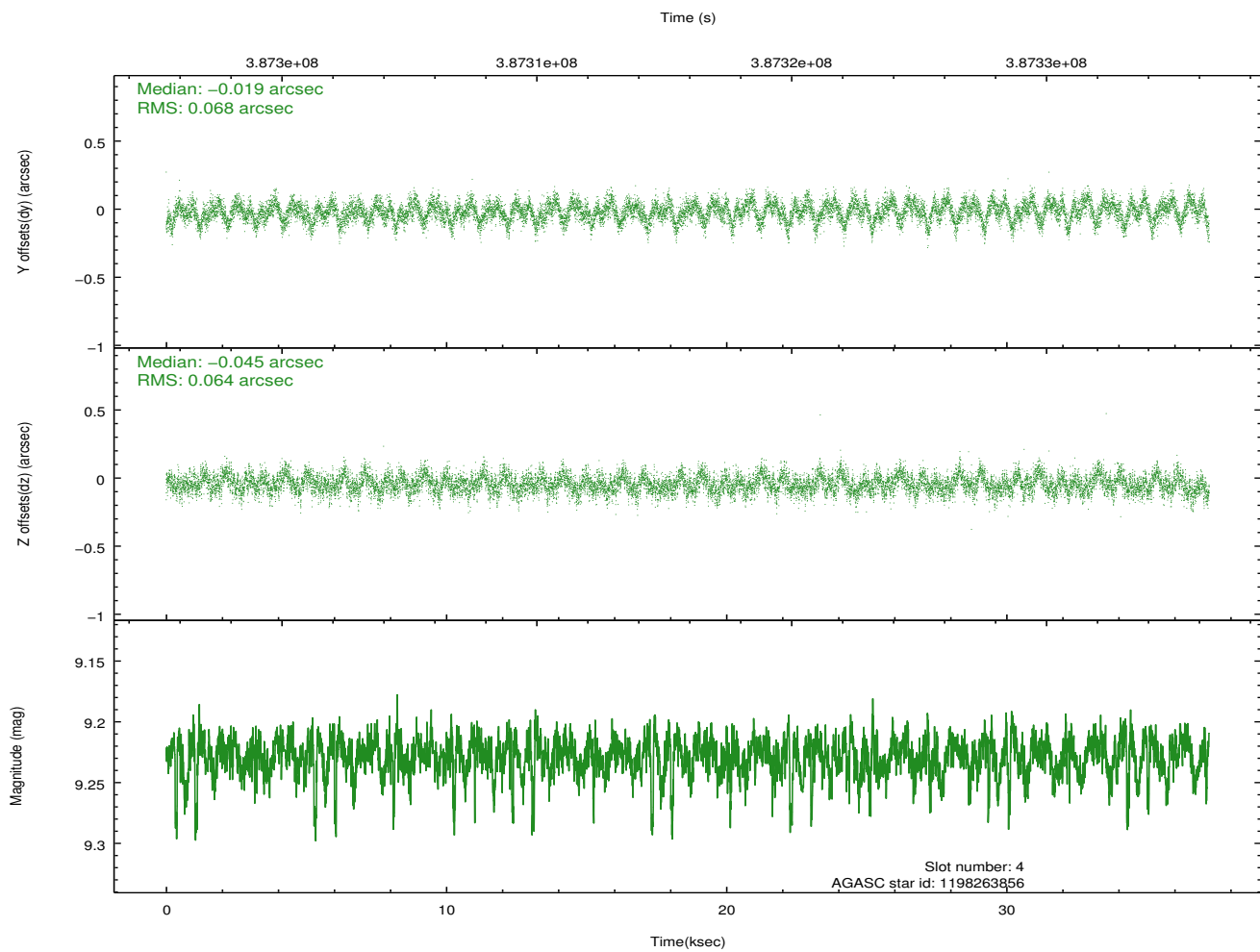
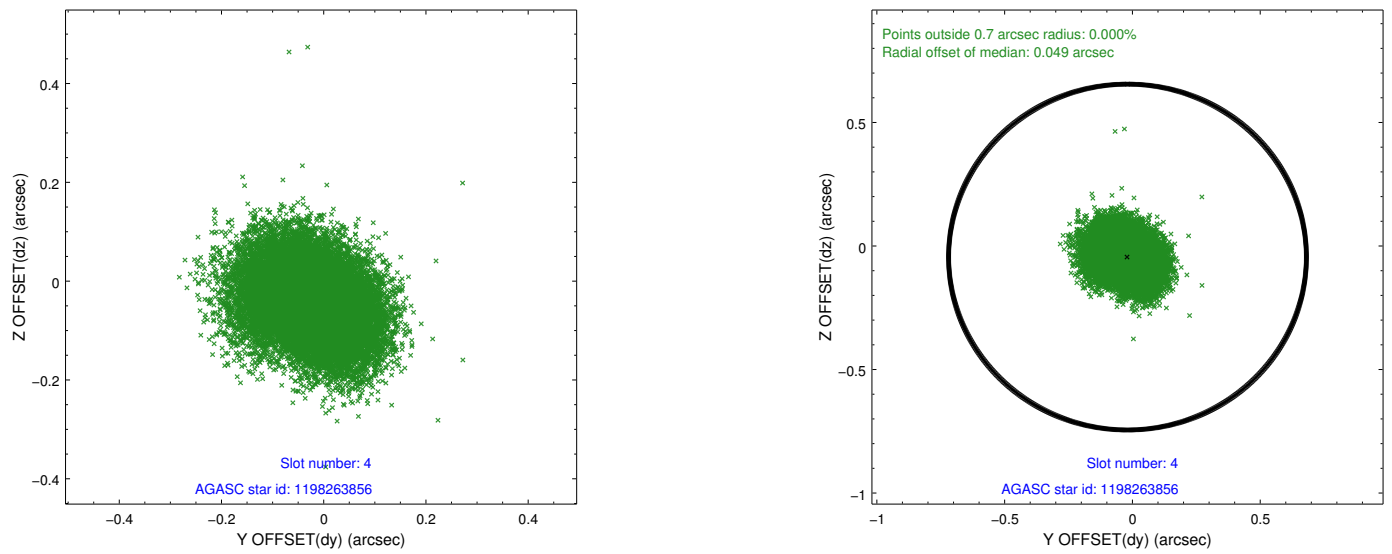
slot	status	id	mag	n_pts	med_dy	med_dz	dr1	dr2	ra	dec	mean_y	mean_z
0	FID	ACIS-I-1	7.04	9082	0.061	-0.033	0.013	0.025	0.000000	0.000000	923.73	-840.48
1	FID	ACIS-I-5	7.03	9082	-0.220	0.061	0.009	0.017	0.000000	0.000000	-1824.62	1057.12
2	FID	ACIS-I-6	7.04	9079	0.068	0.041	0.018	0.028	0.000000	0.000000	389.28	1701.61
3	GUIDE	1198263448	8.66	18147	0.076	0.144	0.093	0.148	23.988893	-72.831877	-1945.98	-2294.67
4	GUIDE	1198263856	9.23	18139	-0.019	-0.045	0.099	0.162	23.344483	-73.858921	-879.17	1307.31
5	GUIDE	1198264032	8.00	18159	0.081	-0.048	0.069	0.107	22.563131	-73.173817	-325.75	-1224.81
6	GUIDE	1198269920	8.27	18157	-0.001	0.107	0.086	0.137	20.316466	-73.033728	1981.22	-1898.94
7	GUIDE	1198272400	9.16	18035	-0.136	-0.158	0.088	0.144	20.411923	-73.620598	1998.63	215.87

2.4 Star Slots

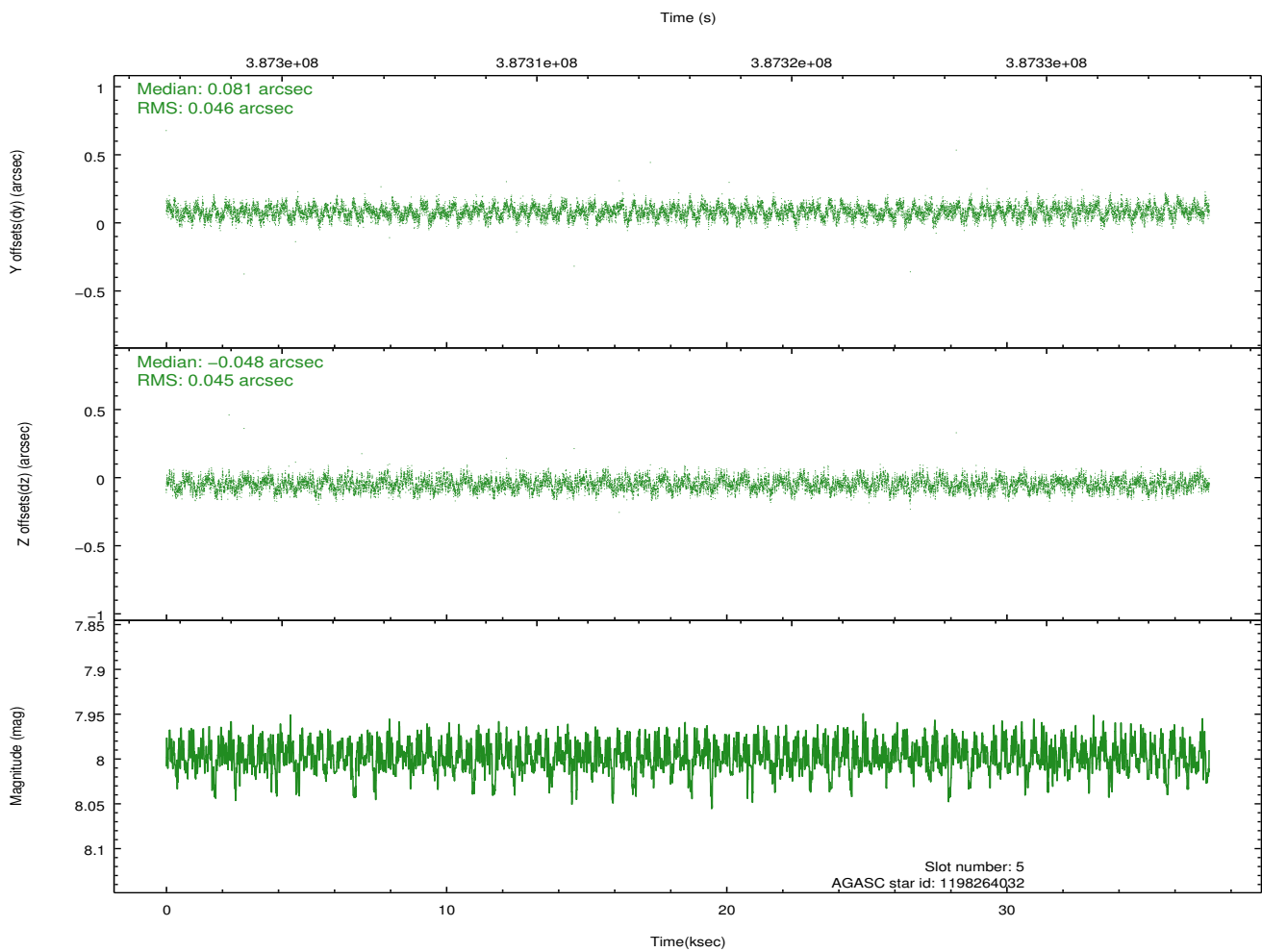
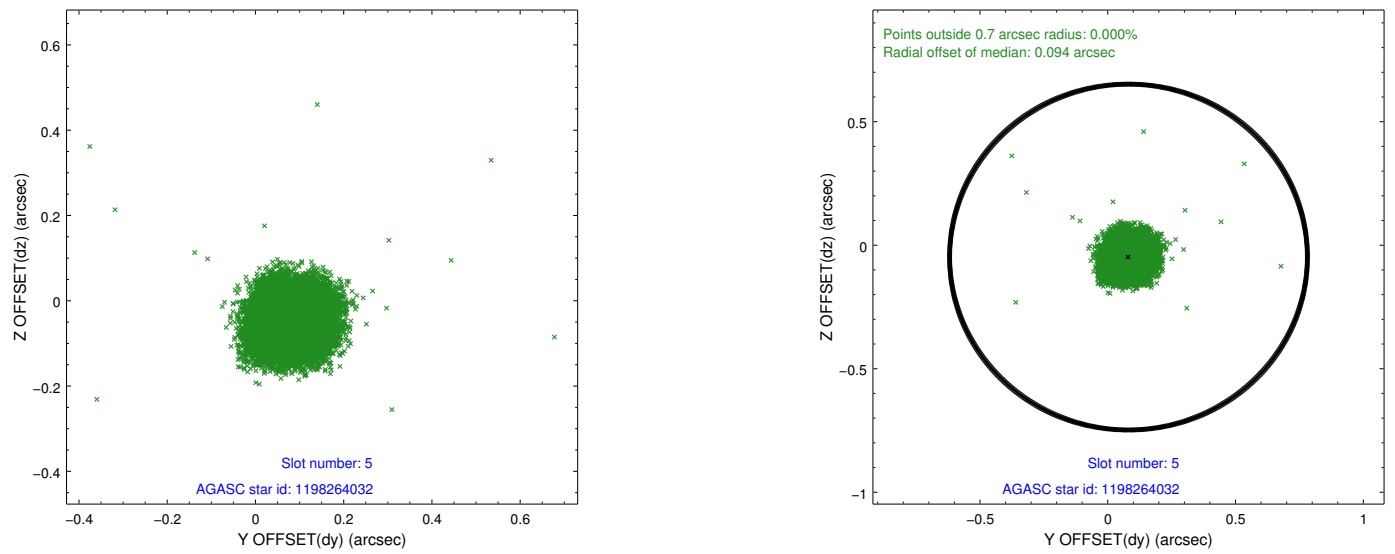
2.4.1 Slot 3



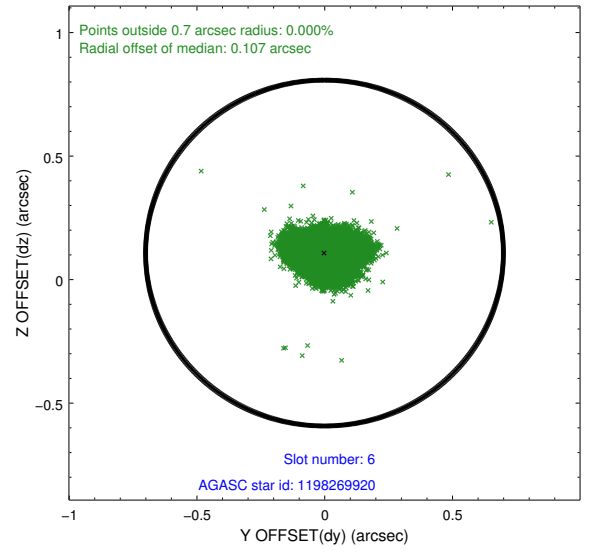
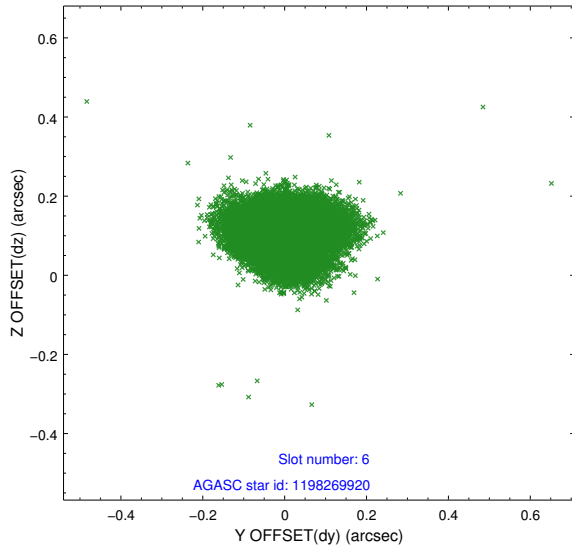
2.4.2 Slot 4



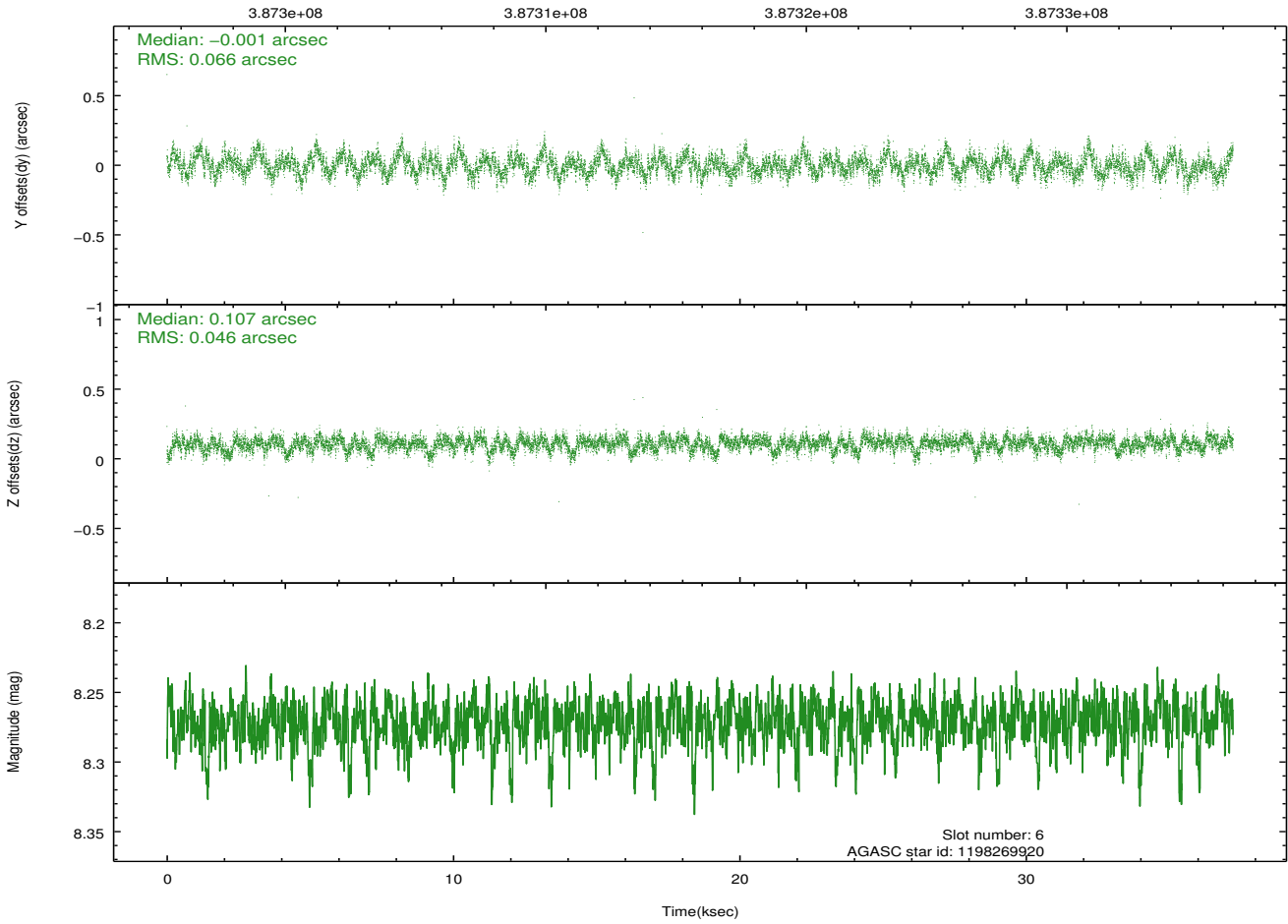
2.4.3 Slot 5



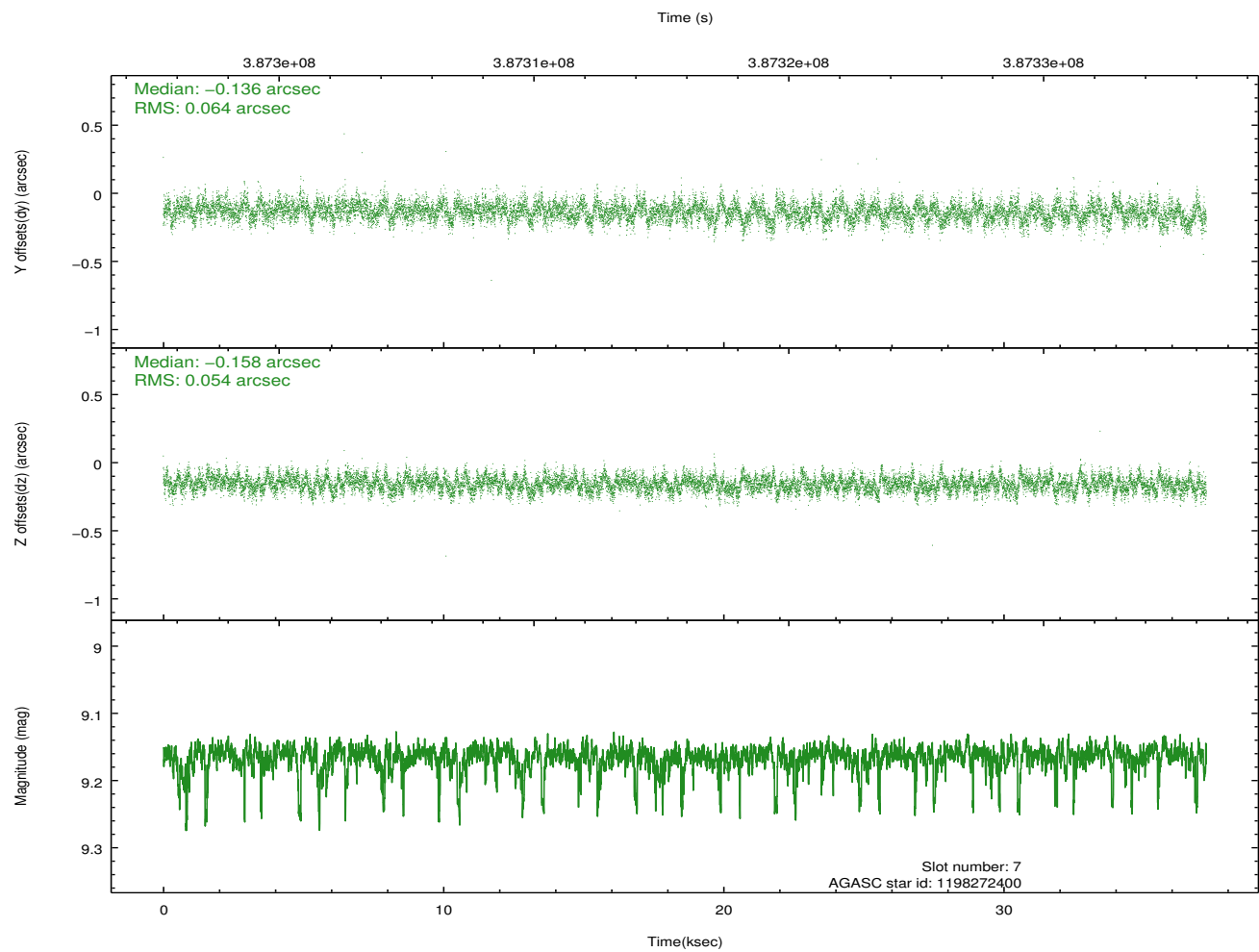
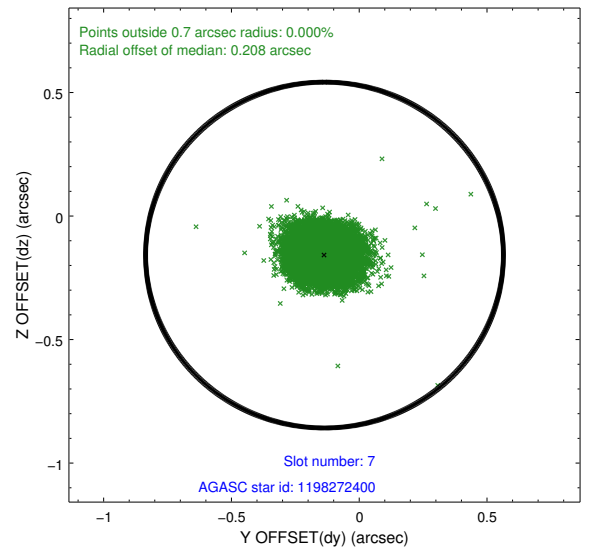
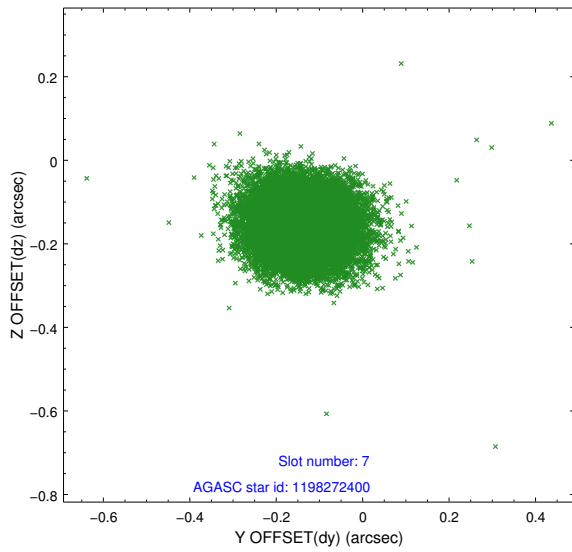
2.4.4 Slot 6



Time (s)

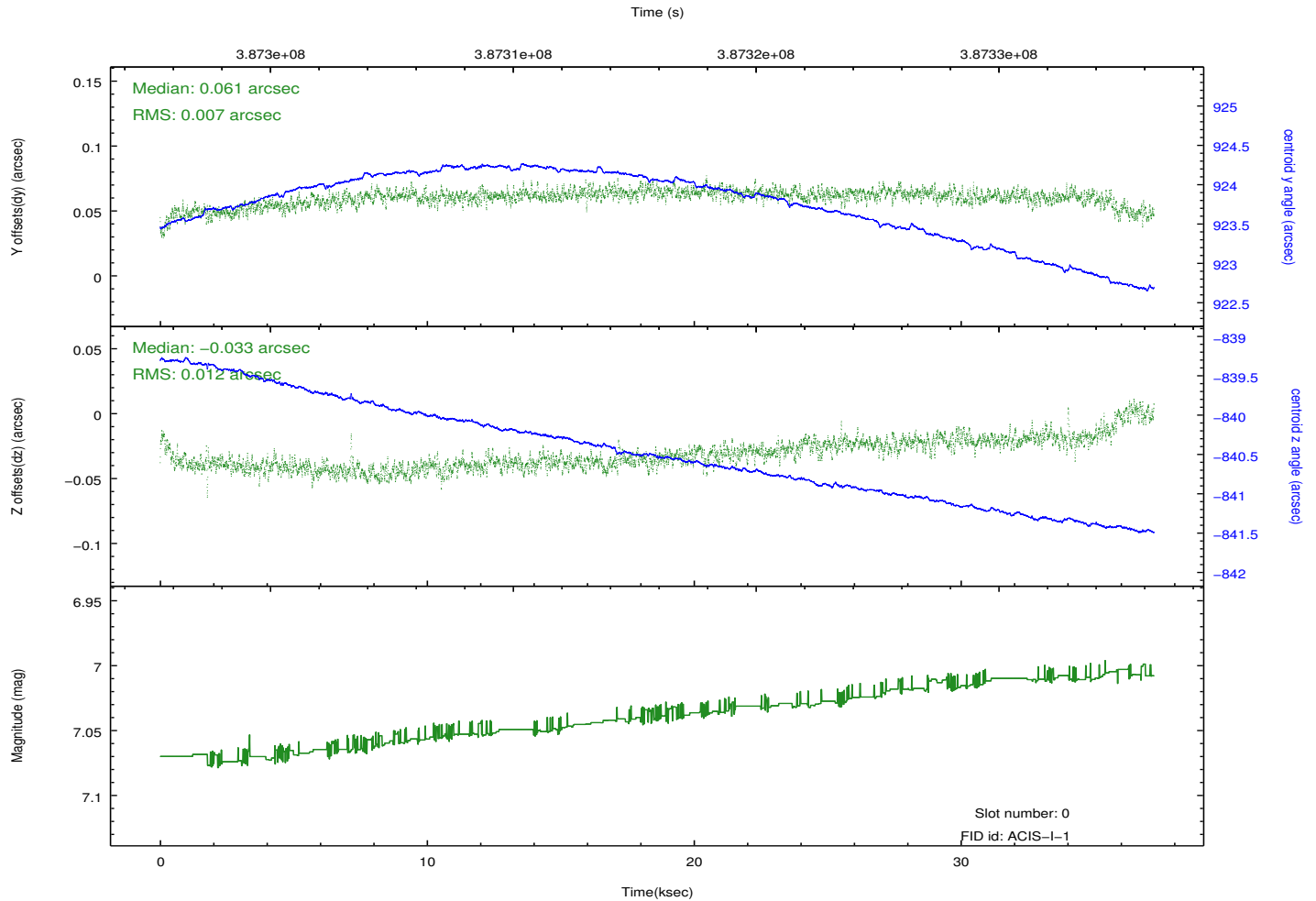
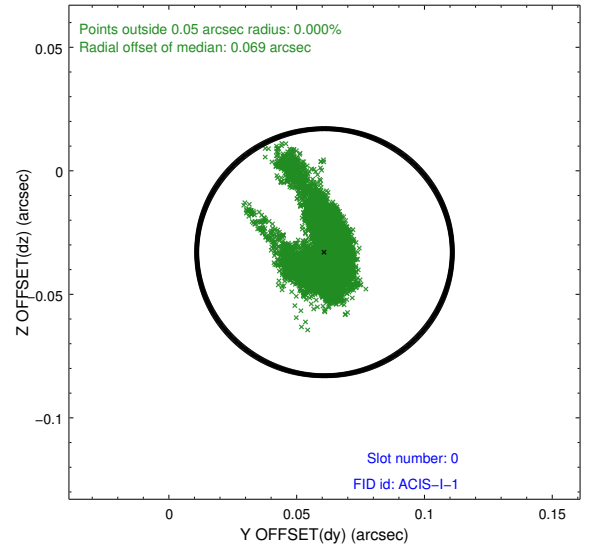
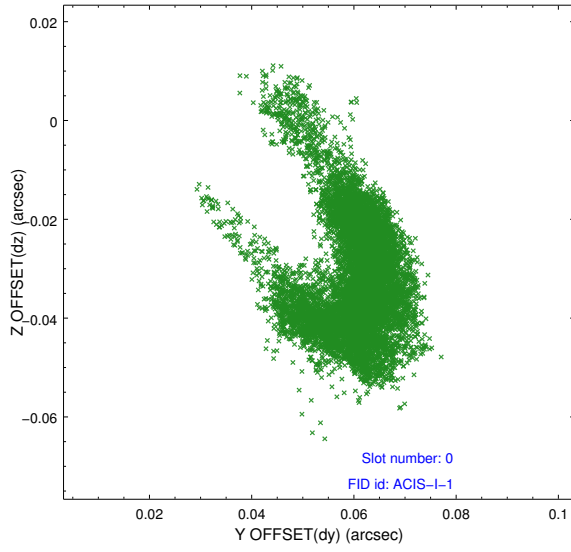


2.4.5 Slot 7

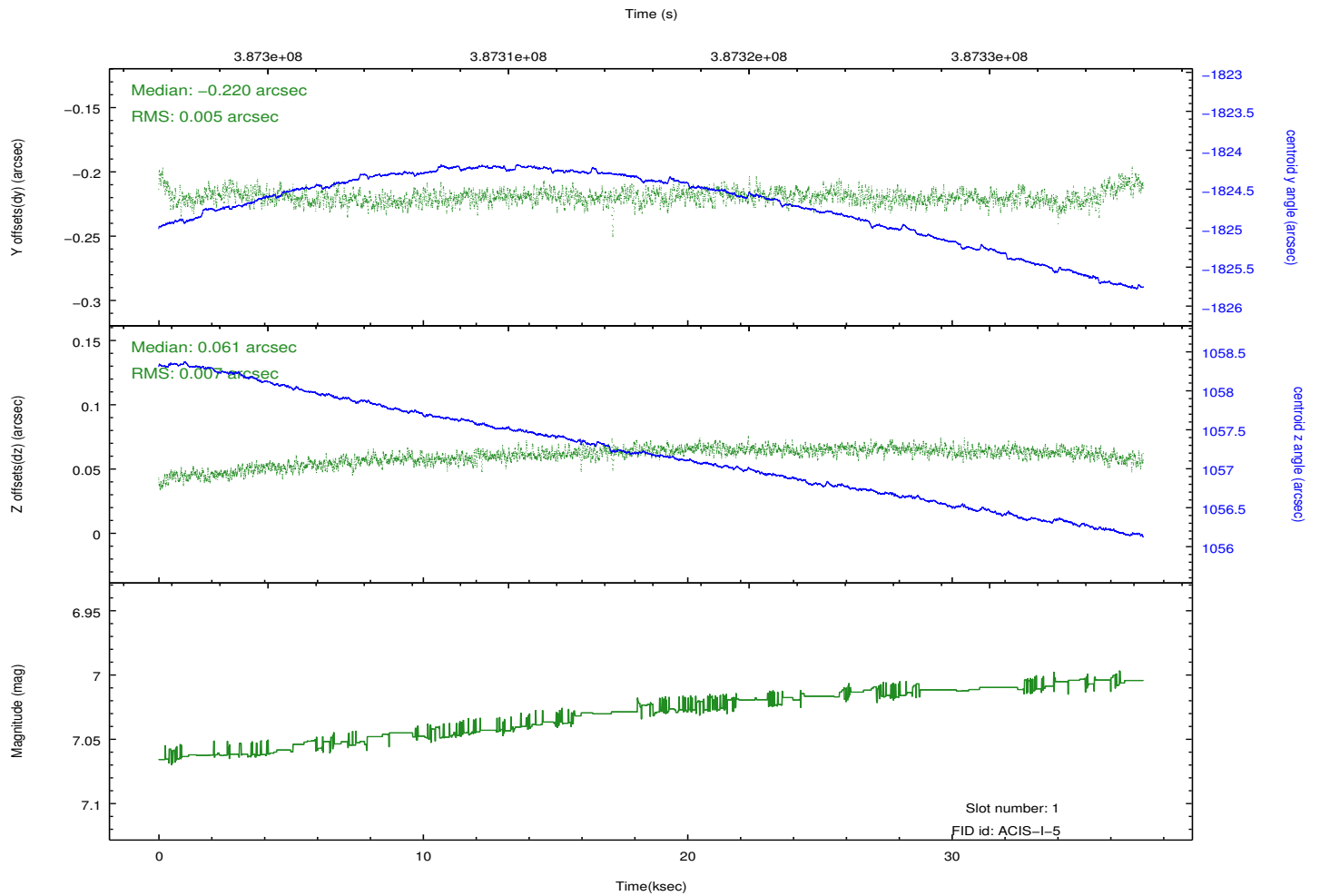
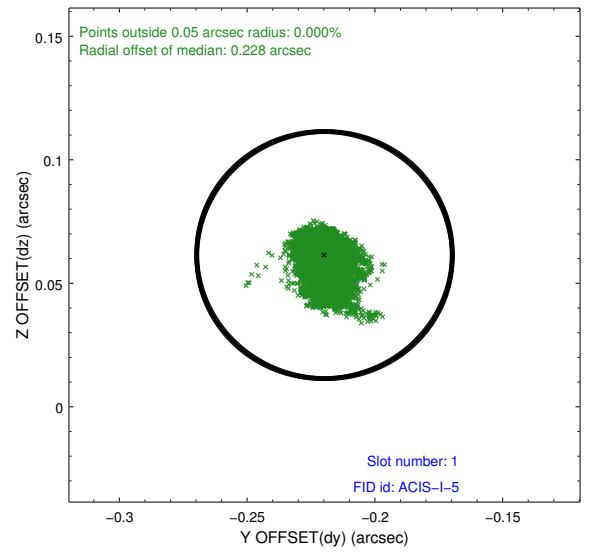
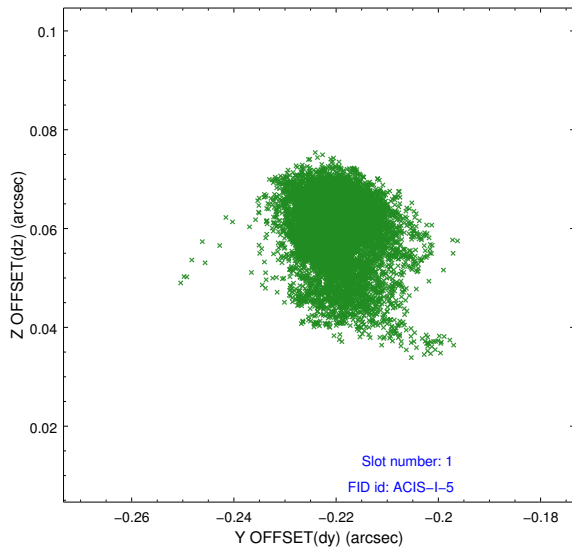


2.5 FID Slots

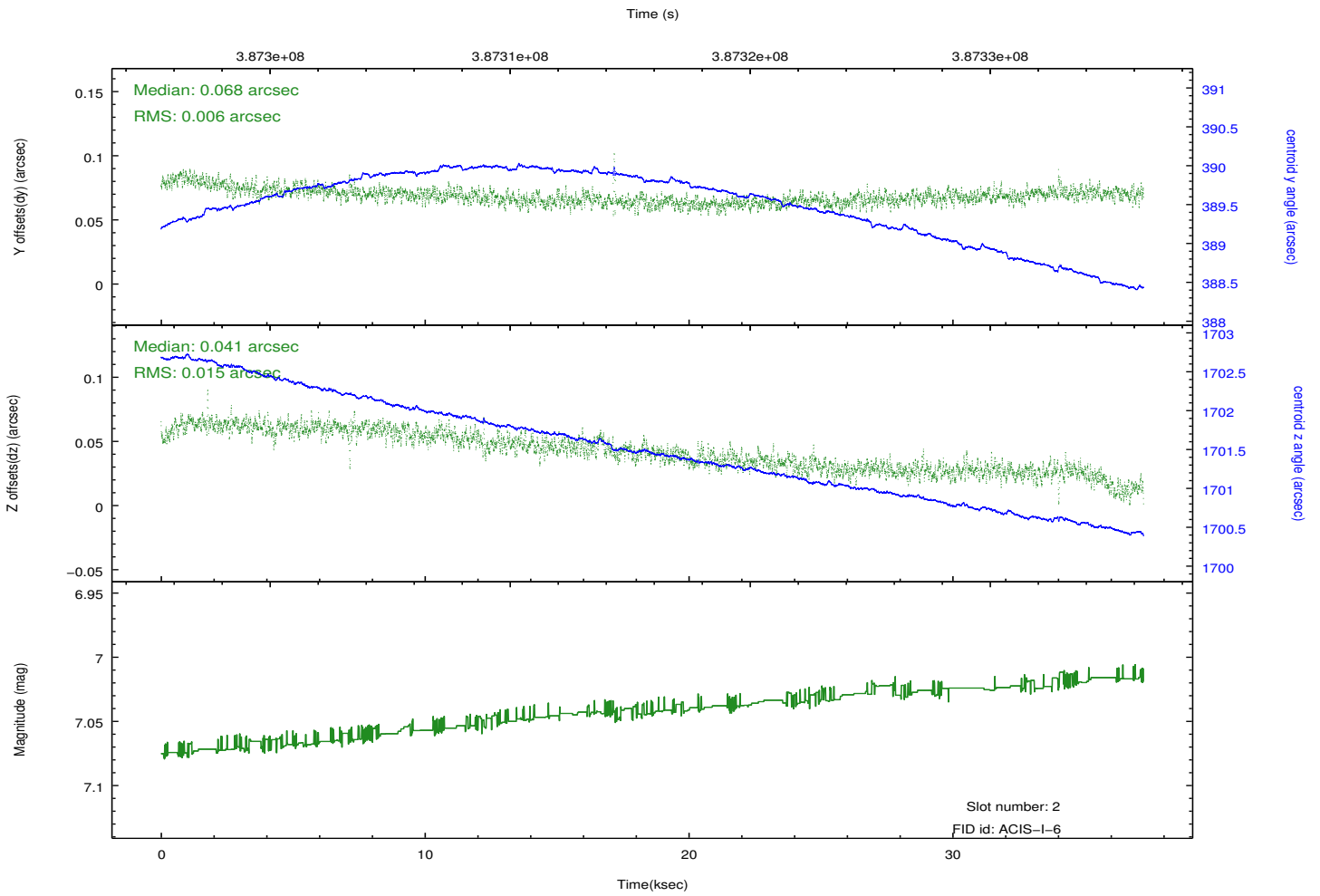
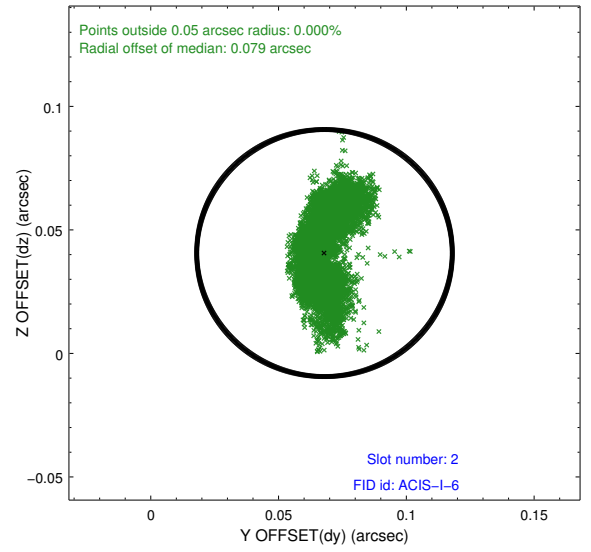
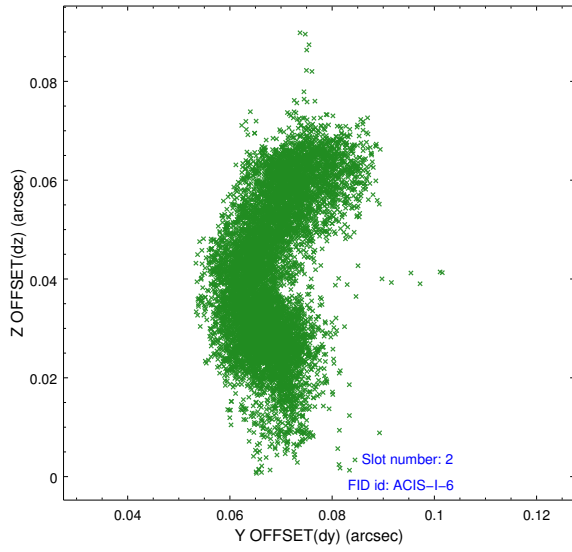
2.5.1 Slot 0



2.5.2 Slot 1



2.5.3 Slot 2



A Summary

A.1 Status

V&V Scientist	Beth Sundheim
V&V Date (YYYY-MM-DD)	2012.07.01
V&V Edition	1
V&V Disposition and Status	OK
V&V Charge Time	36.04799986577

A.2 Comments