

V&V Reference Report

L2 ASCDS Version : 8.4.5

Observation 12209 - L2 Version 2
Chandra X-Ray Center

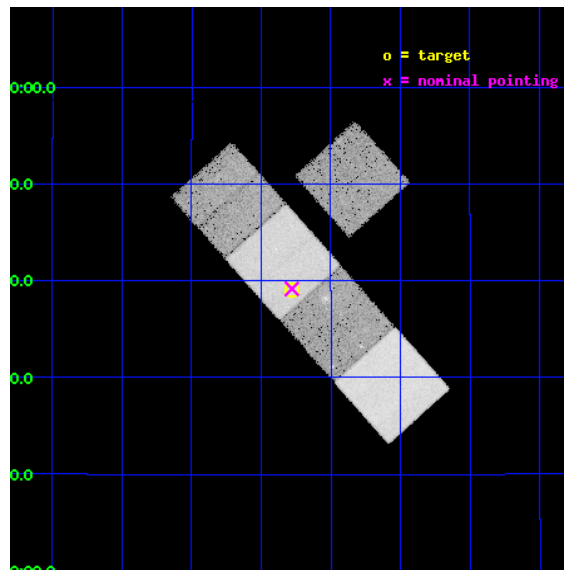
L2 Processing Date : Jun 25 2012

Contents

1	Front	2
2	OBI	3
2.1	OBI	3
2.1.1	Images	3
2.1.2	Bias	3
2.1.3	Parameters	4
2.1.4	Events	4
2.2	Compared Parameters	5
2.3	Aspect	6
2.4	Star Slots	9
2.4.1	Slot 3	9
2.4.2	Slot 4	10
2.4.3	Slot 5	11
2.4.4	Slot 6	12
2.4.5	Slot 7	13
2.5	FID Slots	14
2.5.1	Slot 0	14
2.5.2	Slot 1	15
2.5.3	Slot 2	16
A	Summary	17
A.1	Status	17
A.2	Comments	17

1 Front

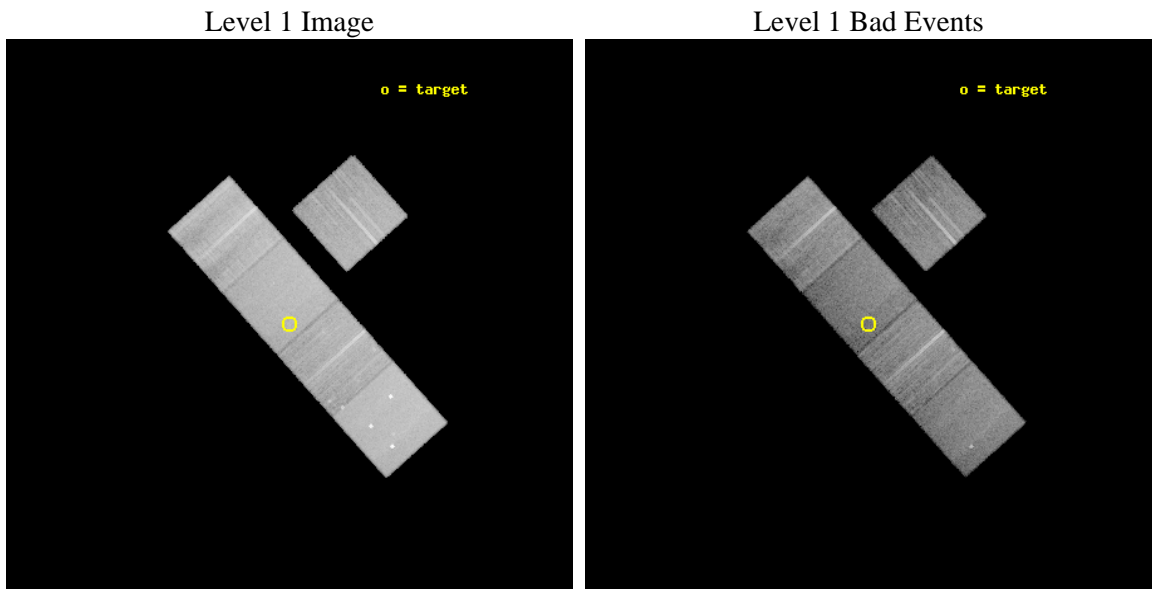
seq_num	800876	Sequence number
obs_id	12209	Observation id
title	Chandra Study of the very X-ray Luminous Distant Galaxy Cluster XMMUJ1230+1339 at $z = 0.975$	Proposal title
observer	Dr. Hans Boehringer	Principal investigator
object	XMMUJ1230+1339	Source name
dtcycle	0	
cycle	P	events from which exps? Prim/Second/Both
ra_targ	187.570417	Observer's specified target RA [deg]
dec_targ	13.651111	Observer's specified target Dec [deg]
ra_nom	187.56981195688	Nominal RA [deg]
dec_nom	13.652851422552	Nominal Dec [deg]
roll_nom	228.15677584571	Nominal Roll [deg]
revision	2	Processing version of data
ontime	20171.700155139	Sum of GTIs [s]
livetime	19908.142042422	Livetime [s]
ontime3	20168.55918473	Sum of GTIs [s]
ontime5	20171.700155139	Sum of GTIs [s]
ontime6	20159.136163712	Sum of GTIs [s]
ontime7	20171.700155139	Sum of GTIs [s]
ontime8	20168.559164762	Sum of GTIs [s]
l2events	246684	Number of level 2 events



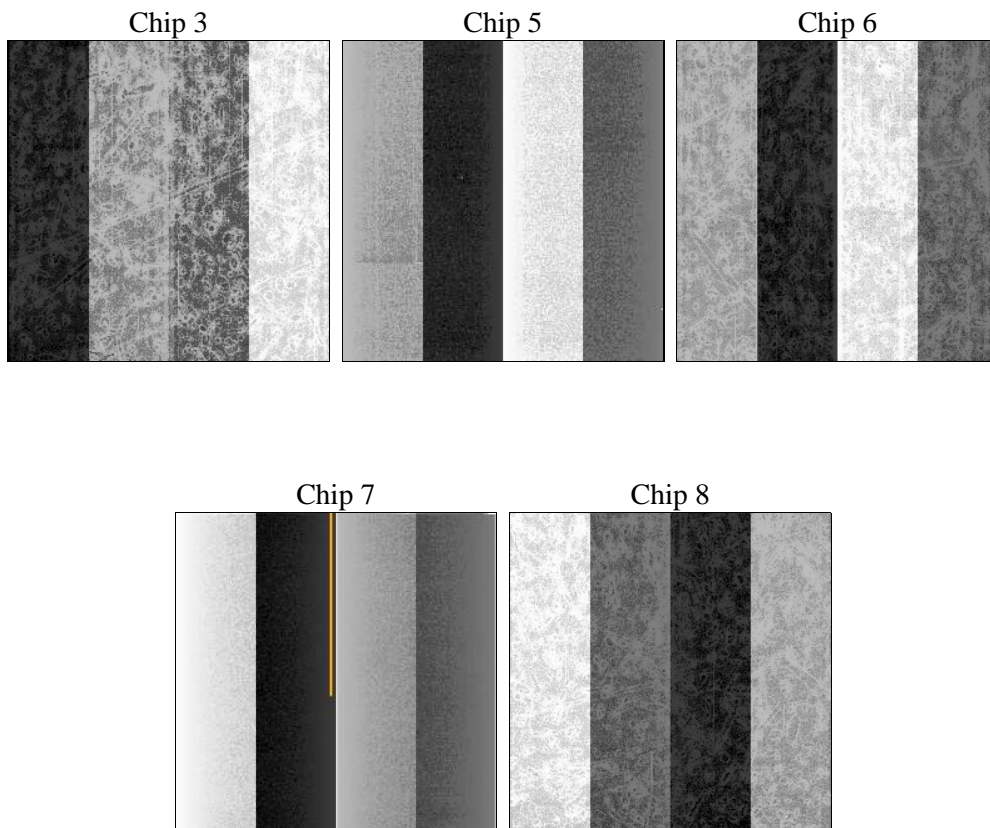
2 OBI

2.1 OBI

2.1.1 Images



2.1.2 Bias



2.1.3 Parameters

obi_num	0	Obi number	sched_exp_time	20000.000000	[s] Scheduled observation exposure time
ascdsver	8.4.5	Processing system revision	ontime	20171.700155139	Sum of GTIs [s]
caldbver	4.4.10	 	ontime3	20168.55918473	Sum of GTIs [s]
date	2012-06-25T10:20:12	Date and time of file creation	ontime5	20171.700155139	Sum of GTIs [s]
revision	2	Processing version of data	ontime6	20159.136163712	Sum of GTIs [s]
			ontime7	20171.700155139	Sum of GTIs [s]
			ontime8	20168.559164762	Sum of GTIs [s]
			l1events	976204	Number of level 1 events

2.1.4 Events

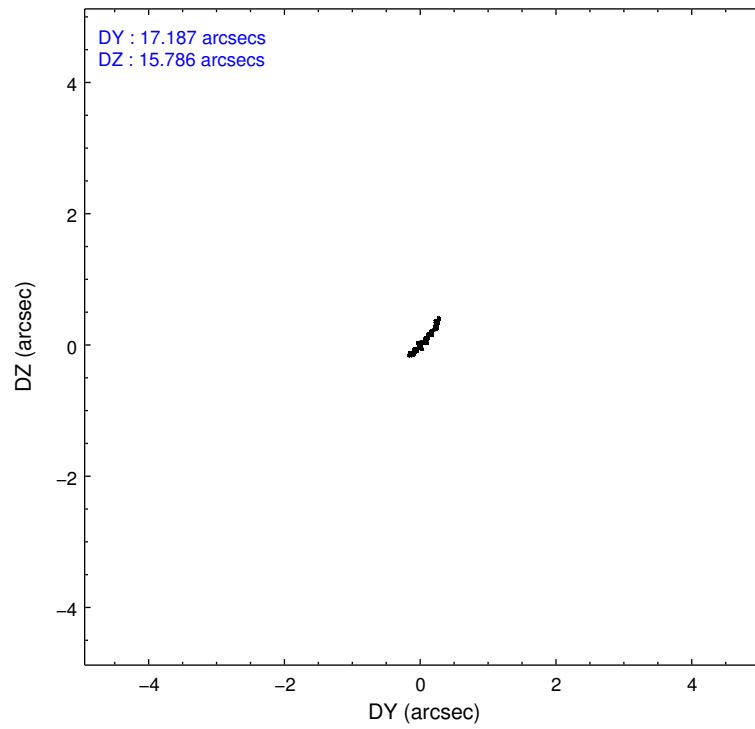
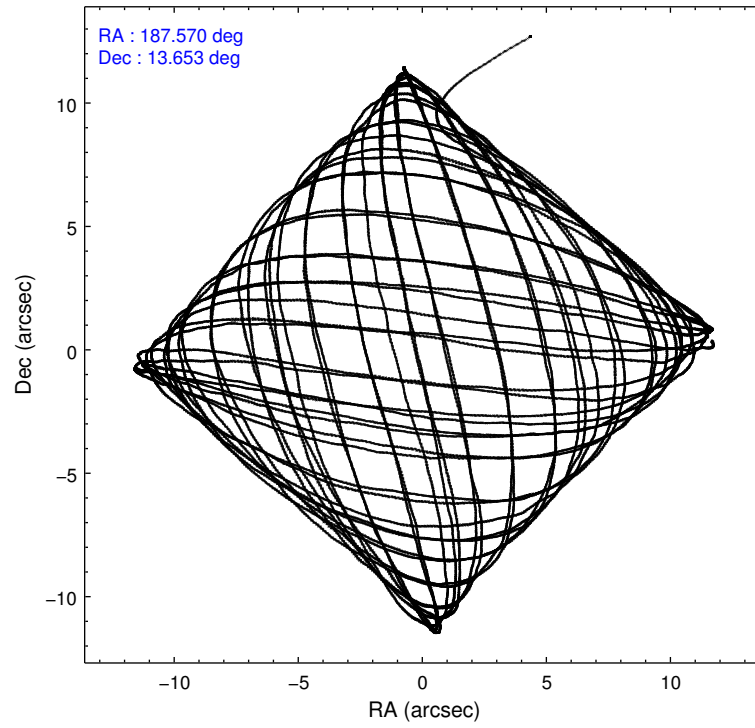
	ccd 3	ccd 5	ccd 6	ccd 7	ccd 8
level 1 events	156676	246095	165788	197420	210225
rejected events	139767	125662	145215	109805	156575
rejected %	89%	51%	87%	55%	74%

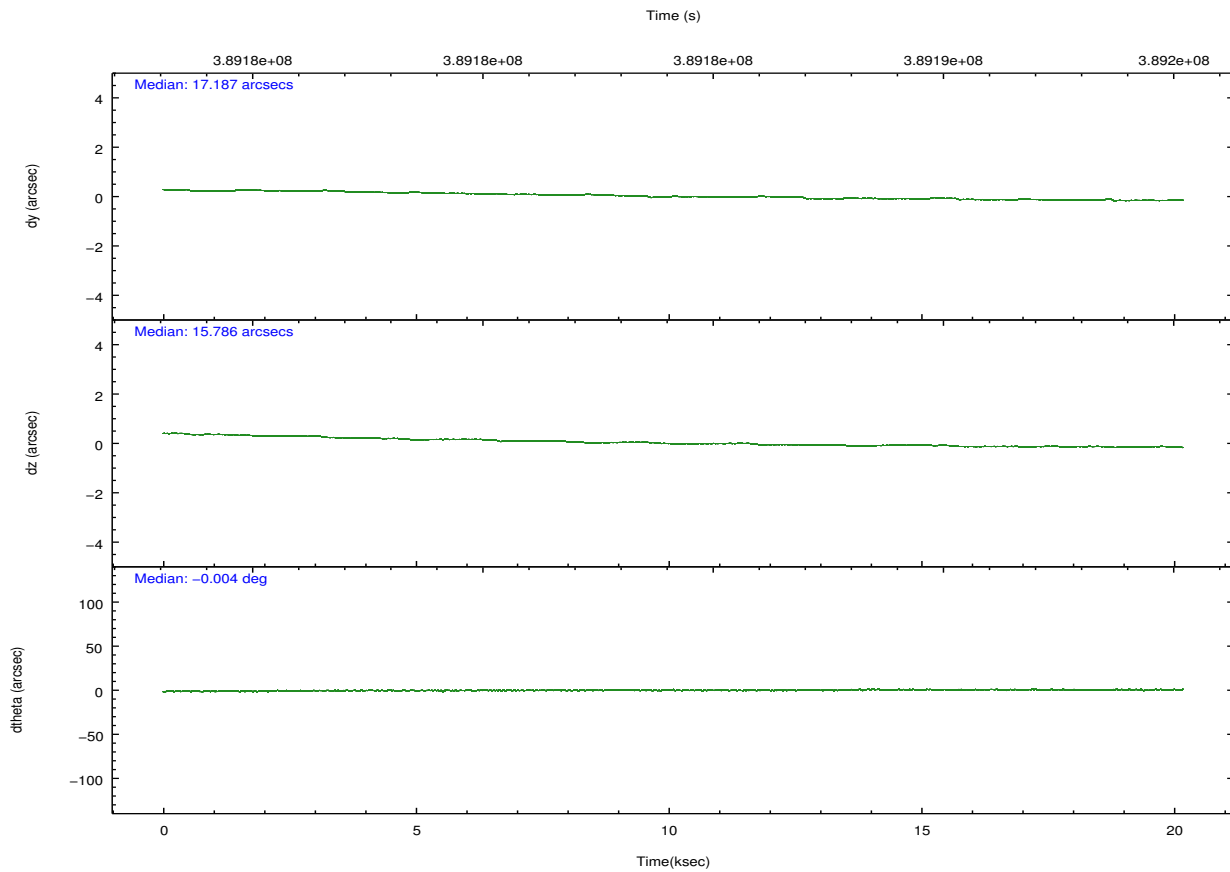
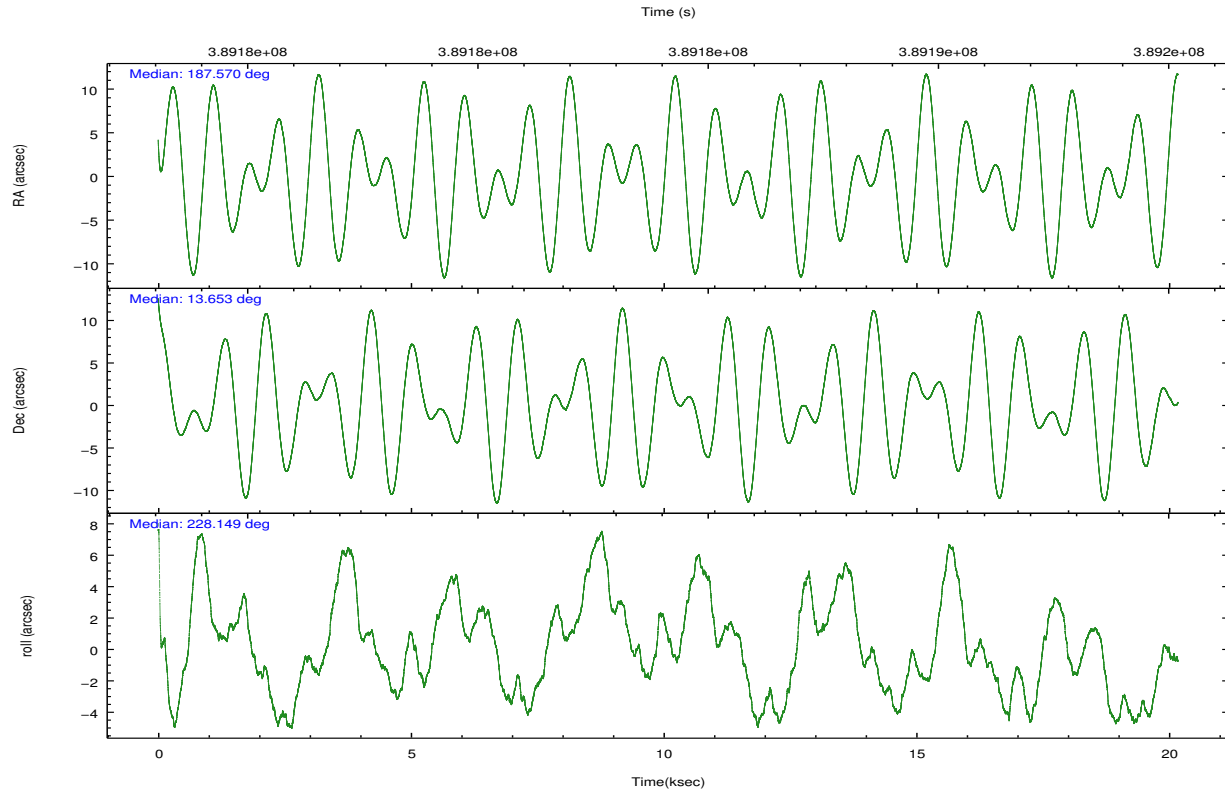
	ccd 3	ccd 5	ccd 6	ccd 7	ccd 8
grade 0 events	6918	15809	9222	9176	17123
	4%	6%	5%	4%	8%
grade 1 events	98	510	113	285	160
	0%	0%	0%	0%	0%
grade 2 events	3581	37521	4292	18831	12985
	2%	15%	2%	9%	6%
grade 3 events	1860	4766	1948	8195	5710
	1%	1%	1%	4%	2%
grade 4 events	1827	4674	1925	8167	5454
	1%	1%	1%	4%	2%
grade 5 events	6907	18566	7037	20411	10347
	4%	7%	4%	10%	4%
grade 6 events	3352	62252	3876	46589	14485
	2%	25%	2%	23%	6%
grade 7 events	132133	101997	137375	85766	143961
	84%	41%	82%	43%	68%

2.2 Compared Parameters

Parameter	Planned	Actual	Parameter	Planned	Actual
Instrument	ACIS	ACIS	Obspar format version number	7	7
Detector	ACIS-35678	ACIS-35678	Obspar file type	PREDICTED	ACTUAL
Grating	NONE	NONE	Obspar update status	NONE	UPDATED
Data mode	VFAINT	VFAINT	Number of optional ACIS chips dropped	0	0
Observation mode	POINTING	POINTING	On-chip summing requested	N	N
[deg] Pointing RA	187.575190	187.5698119568818	Subarray requested	NONE	NONE
[deg] Pointing Dec	13.679676	13.65285142255154	Alternating exposures requested	N	N
[deg] Pointing Roll	227.998874	228.1567758457149	[s] Primary exposure time	0.000000	3.1
[mm] SIM focus pos	-0.684267	-0.6828225247311905			
[mm] SIM defocus	0	0.001444936568705701			
[mm] SIM translation stage pos	-187.132523	-187.1254020033014			
[mm] SIM translation stage offset	-3	-3.007120579706367			
[s] Observation start time (MET)	389174211.184000	389172835.38082			
Observation start date	2010-05-02T07:55:45	2010-05-02T07:33:55			
[s] Observation end time (MET)	389194211.184000	389195508.89447			
Observation end date	2010-05-02T13:29:05	2010-05-02T13:51:48			
Read mode	TIMED	TIMED			

2.3 Aspect



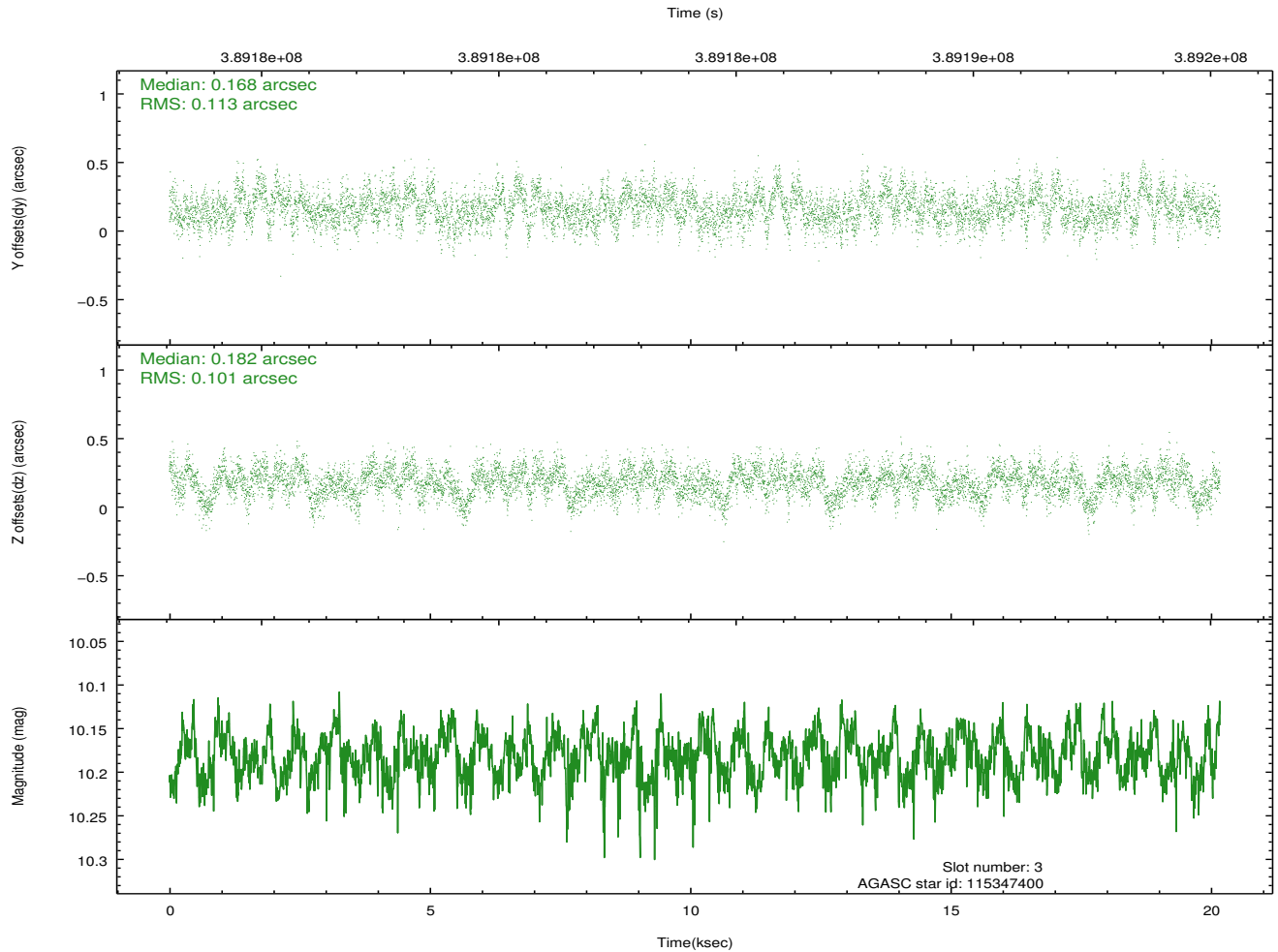
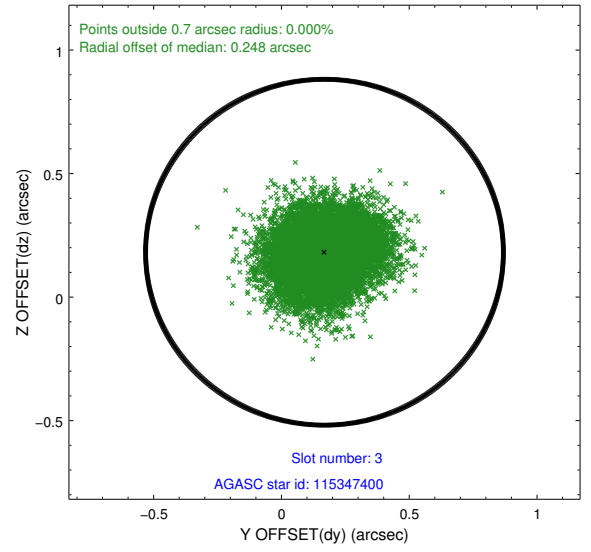
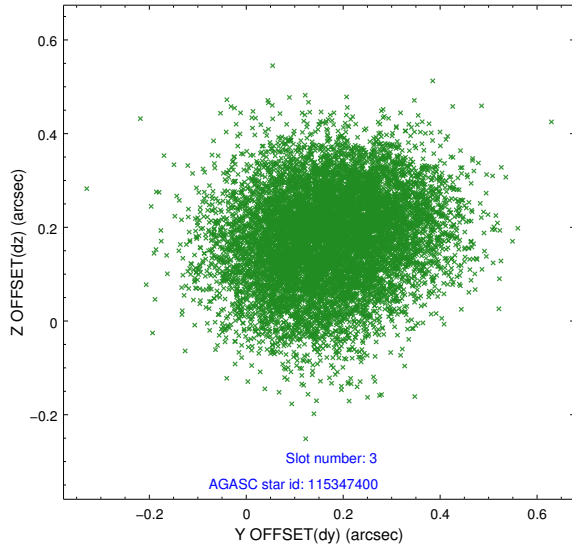


Slot Statistics

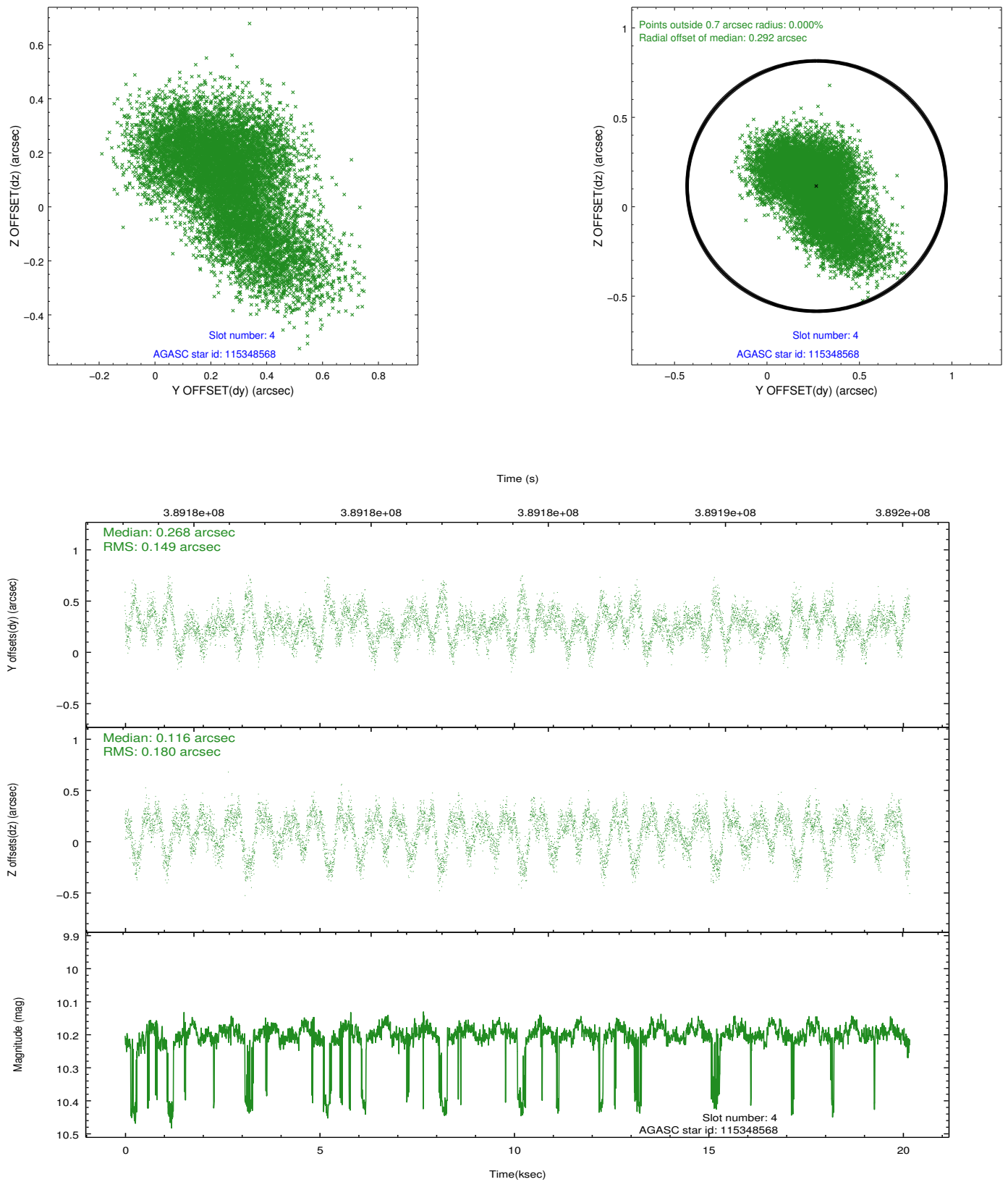
slot	status	id	mag	n_pts	med_dy	med_dz	dr1	dr2	ra	dec	mean_y	mean_z
0	FID	ACIS-S-2	6.88	4920	-0.086	-0.103	0.006	0.011	0.000000	0.000000	-770.14	-1799.42
1	FID	ACIS-S-4	6.97	4921	0.218	0.069	0.008	0.014	0.000000	0.000000	2143.37	109.01
2	FID	ACIS-S-5	7.01	4921	-0.164	0.042	0.008	0.015	0.000000	0.000000	-1822.81	102.88
3	GUIDE	115347400	10.18	9822	0.168	0.182	0.164	0.258	186.994146	13.445598	1987.12	-949.11
4	GUIDE	115348568	10.20	9739	0.268	0.116	0.243	0.422	188.076087	13.658173	-1115.49	1352.77
5	GUIDE	115348632	10.60	9789	-0.544	-0.590	0.191	0.306	187.536861	13.233195	1284.11	975.64
6	GUIDE	115349560	9.83	9823	-0.030	0.177	0.138	0.219	188.086555	13.583828	-939.99	1557.69
7	GUIDE	115350296	9.08	9826	0.135	0.147	0.144	0.229	187.140806	13.950701	290.29	-1781.06

2.4 Star Slots

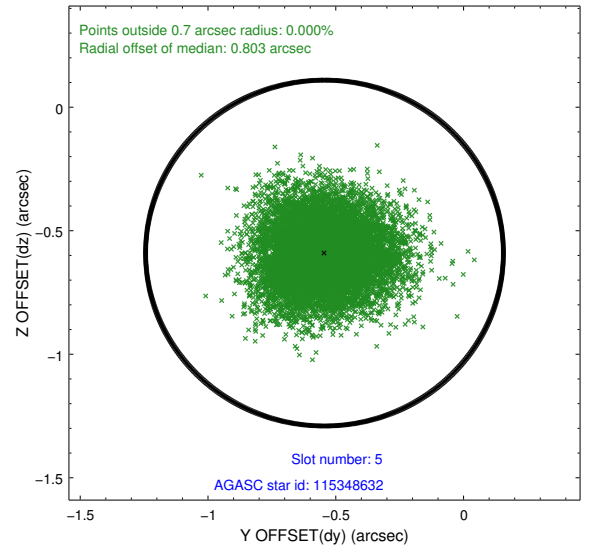
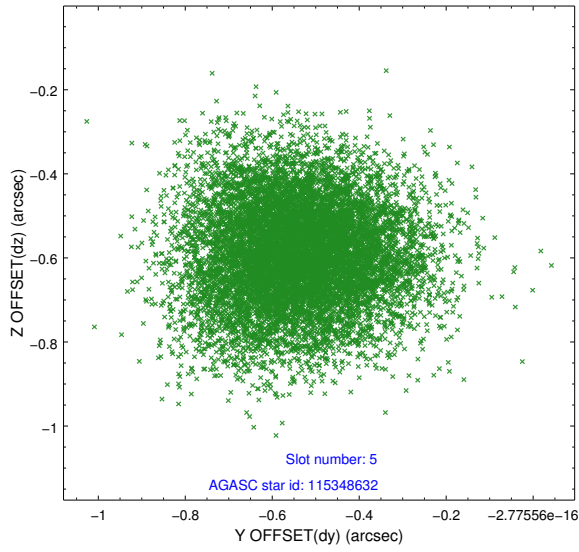
2.4.1 Slot 3



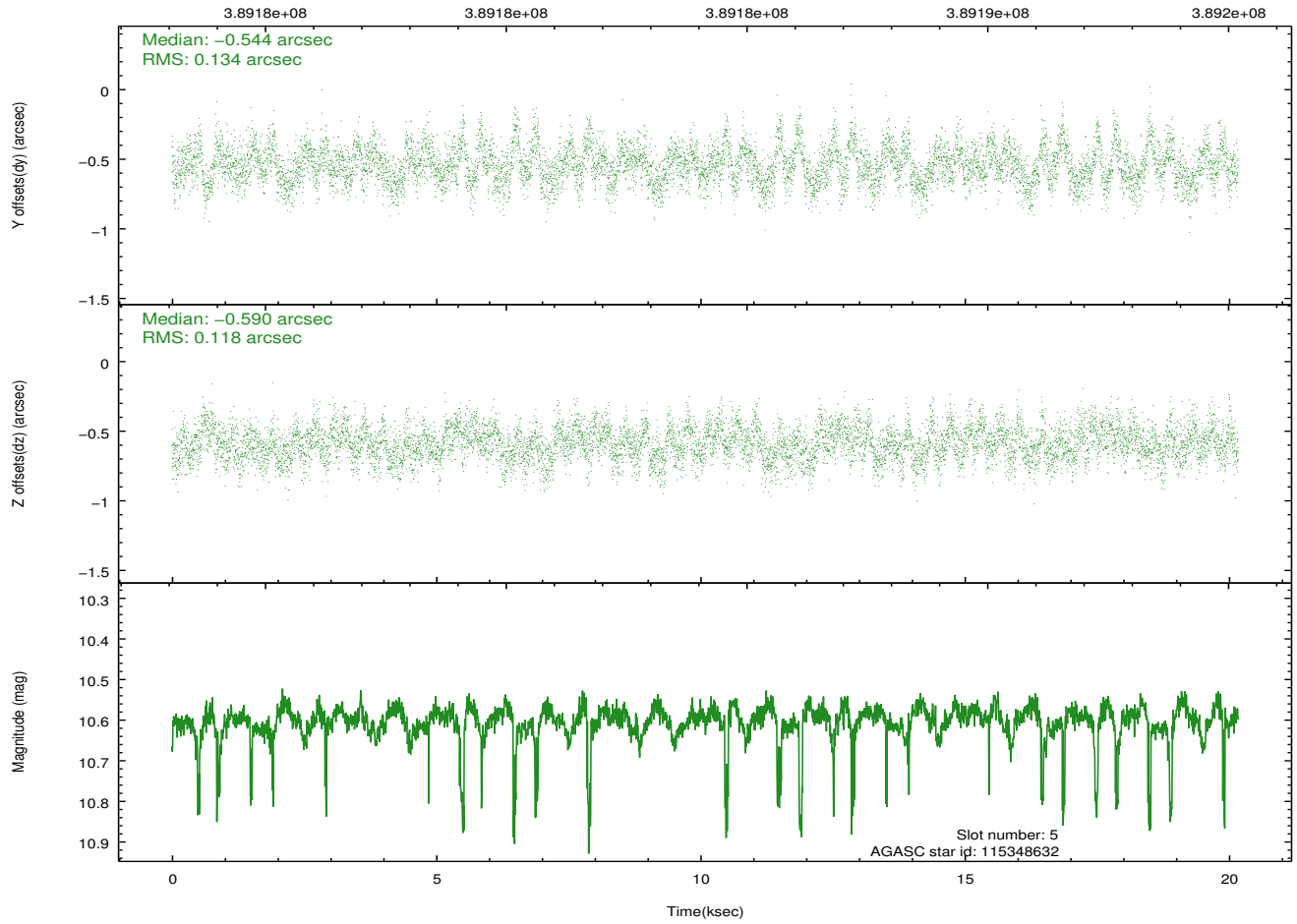
2.4.2 Slot 4



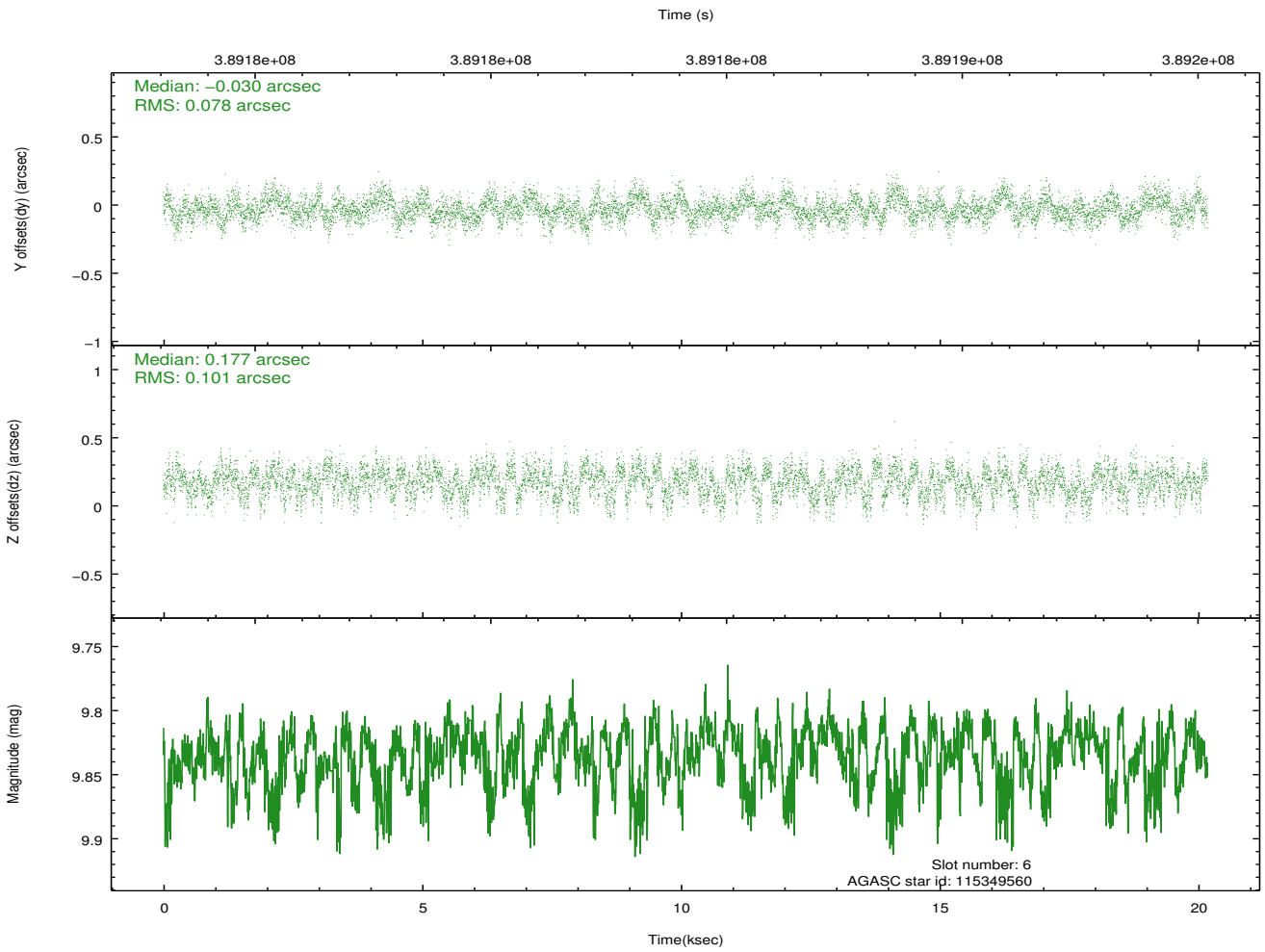
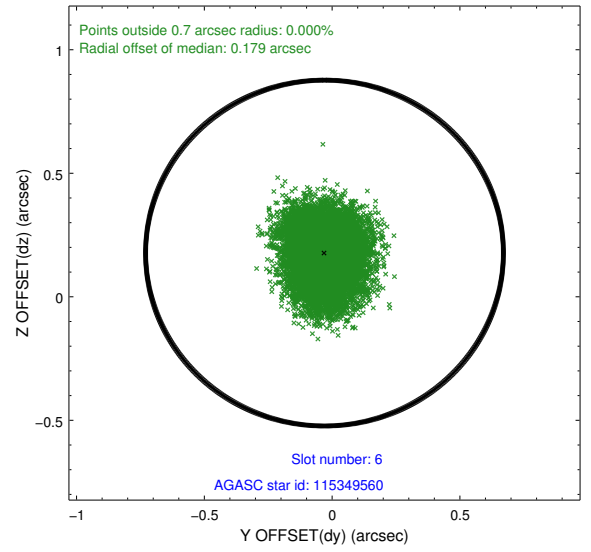
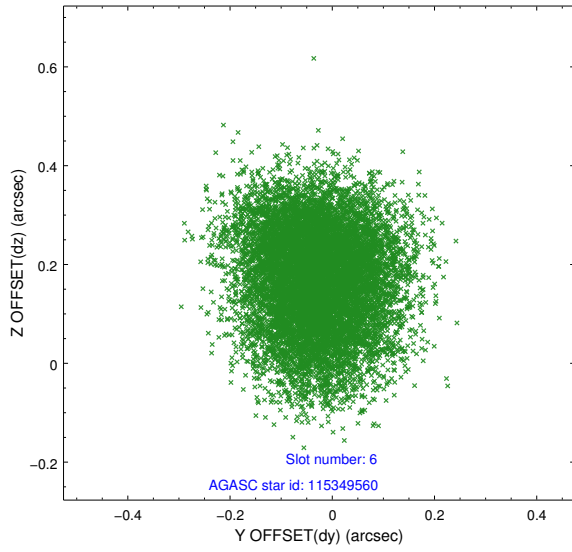
2.4.3 Slot 5



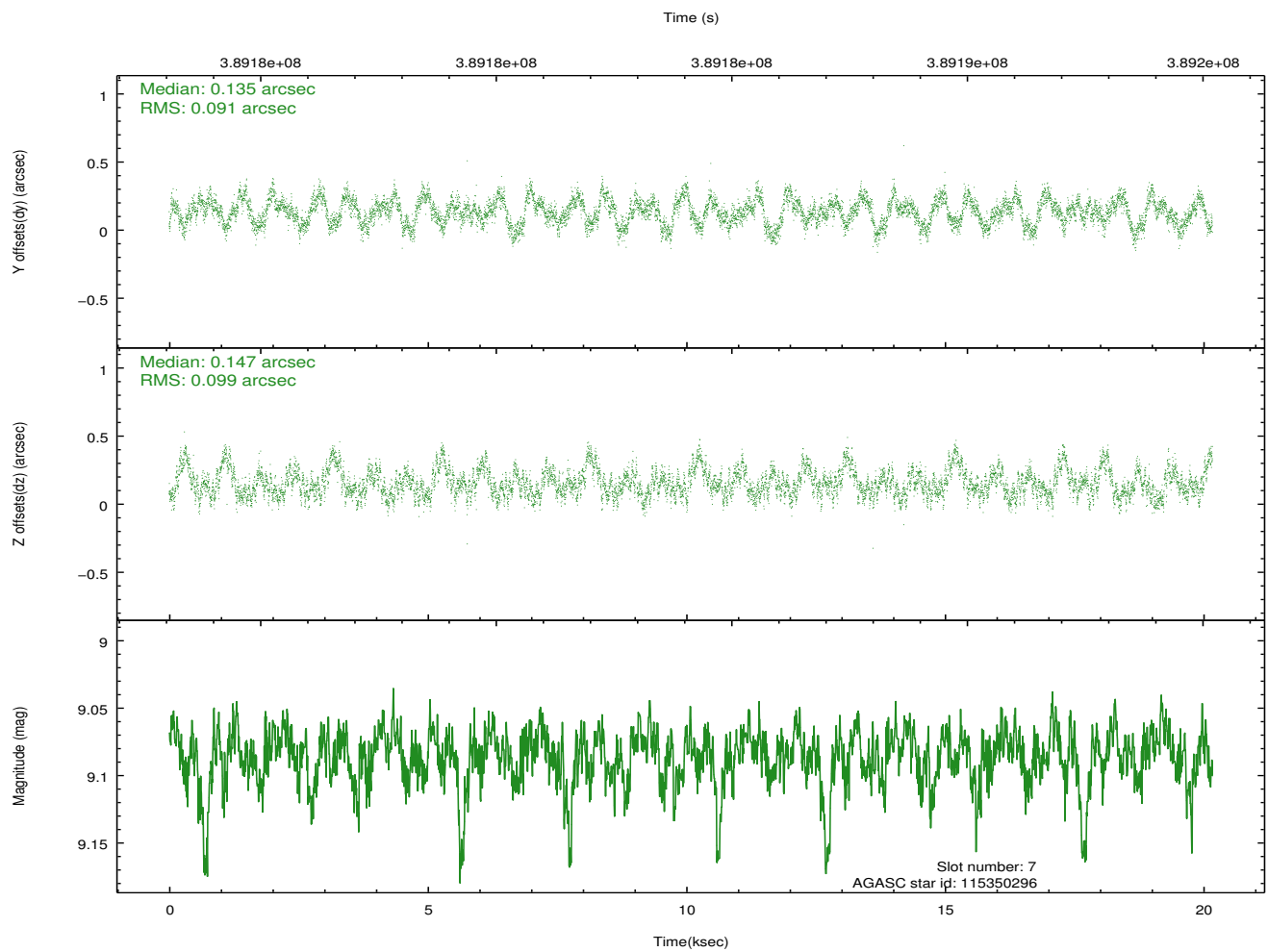
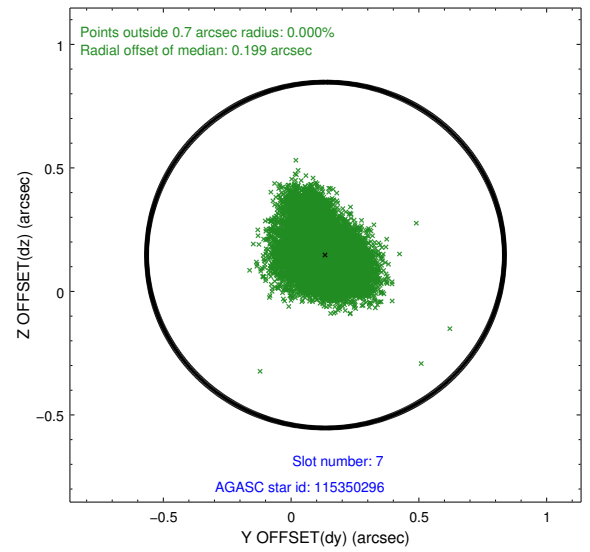
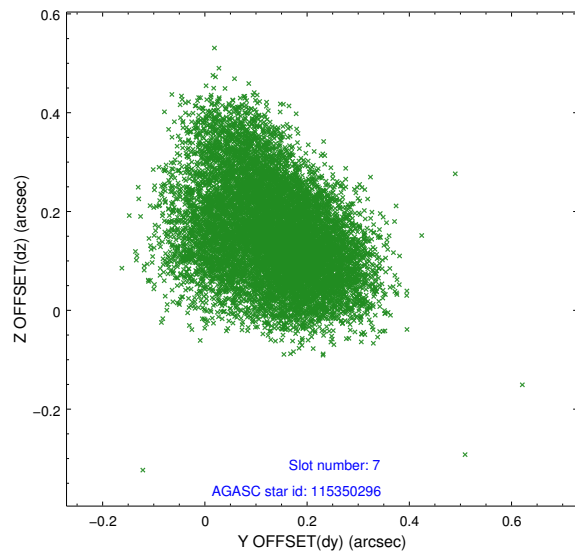
Time (s)



2.4.4 Slot 6

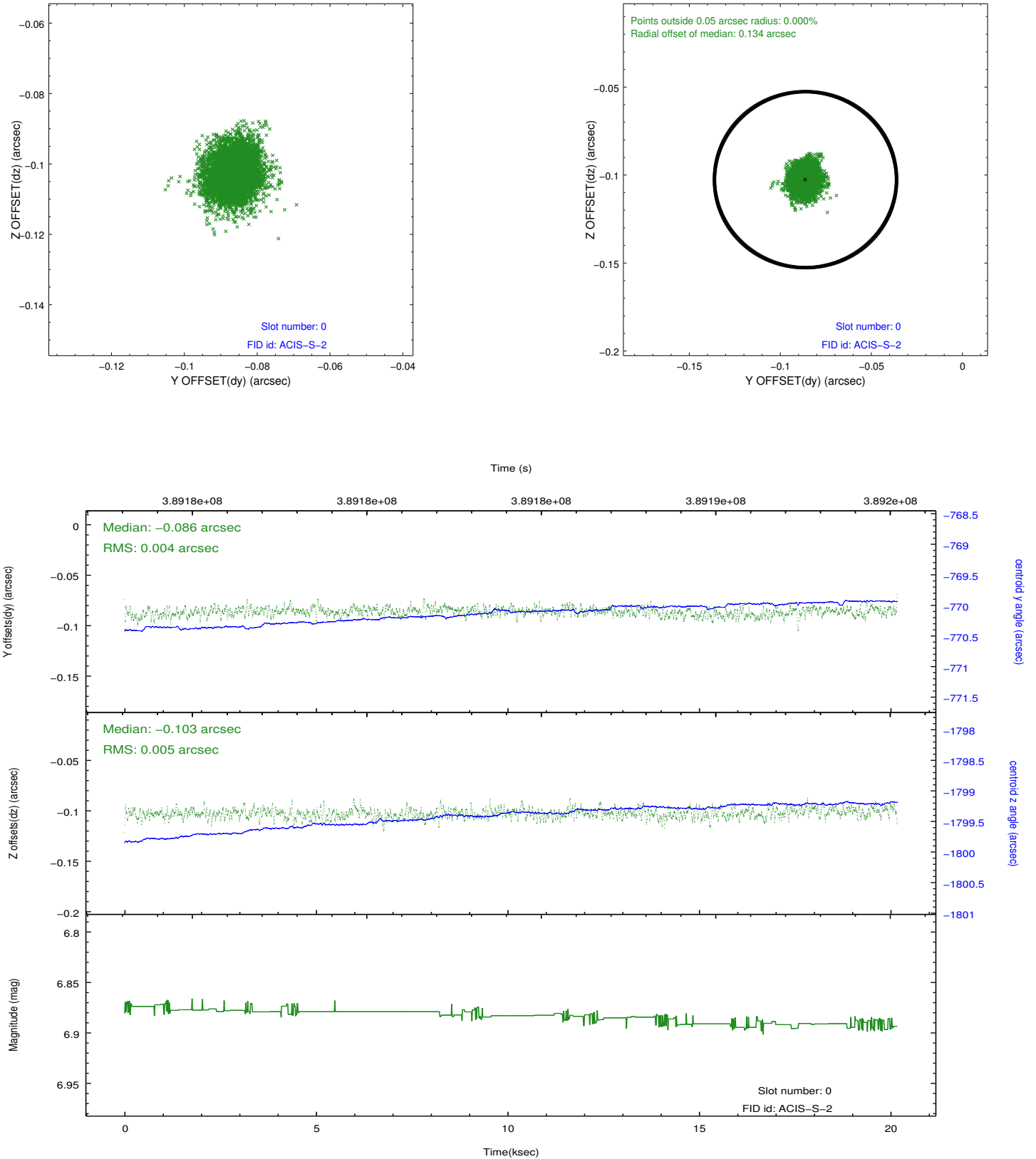


2.4.5 Slot 7

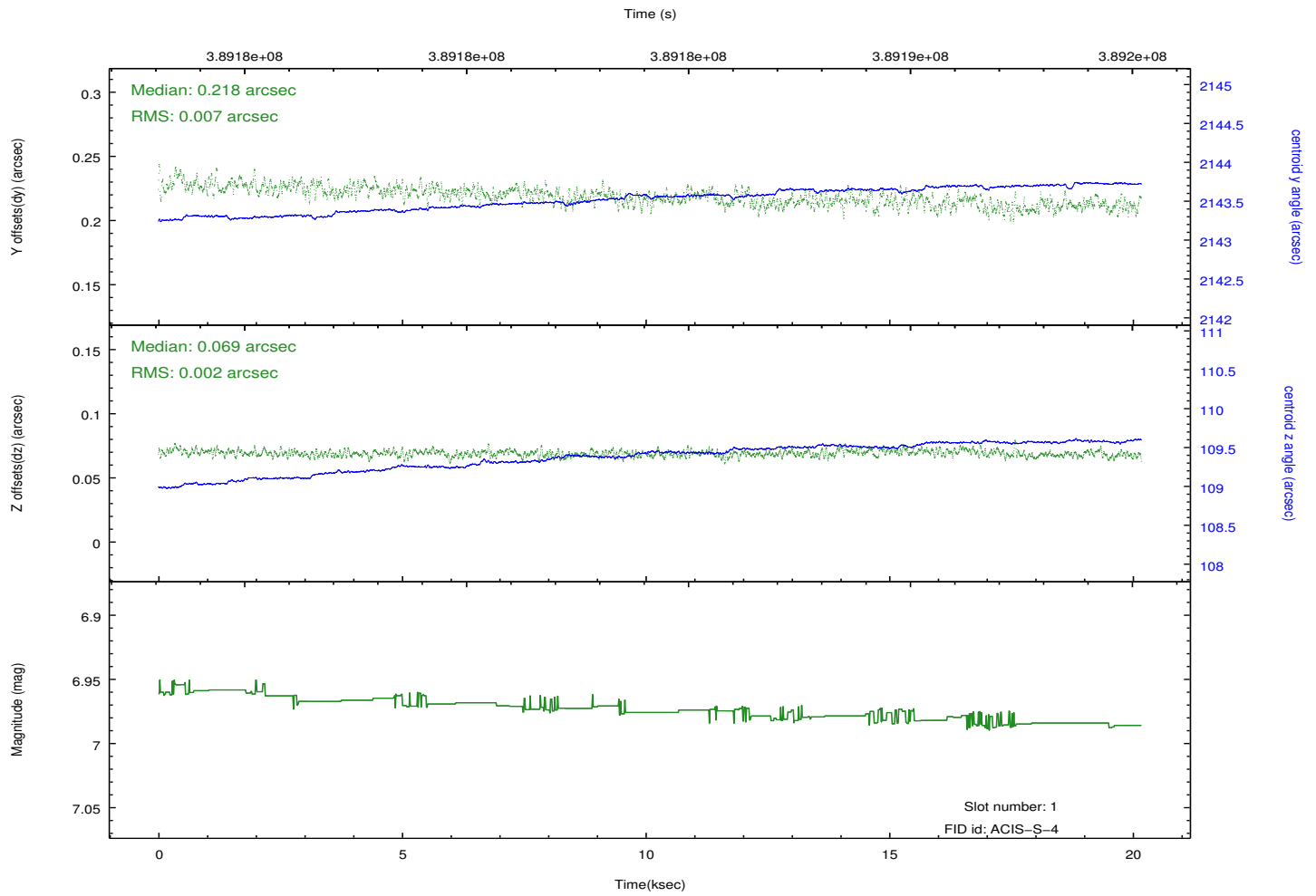
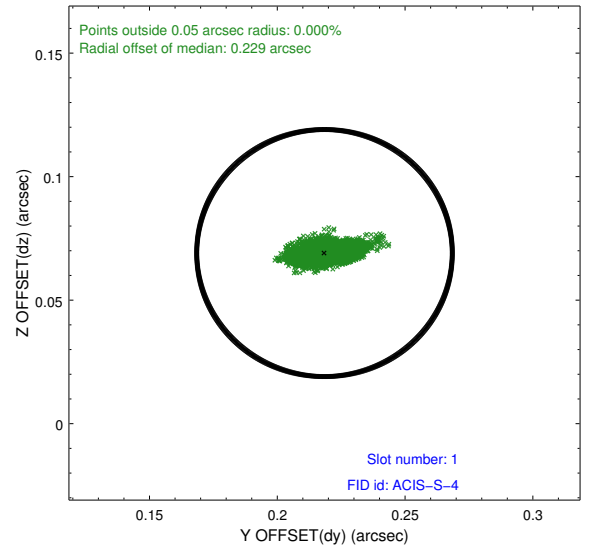
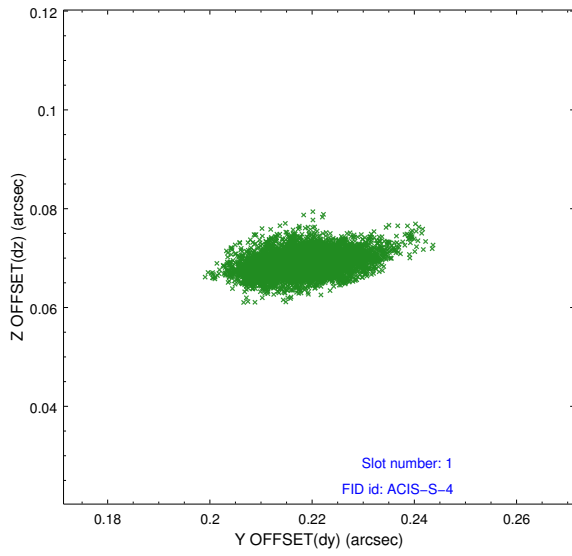


2.5 FID Slots

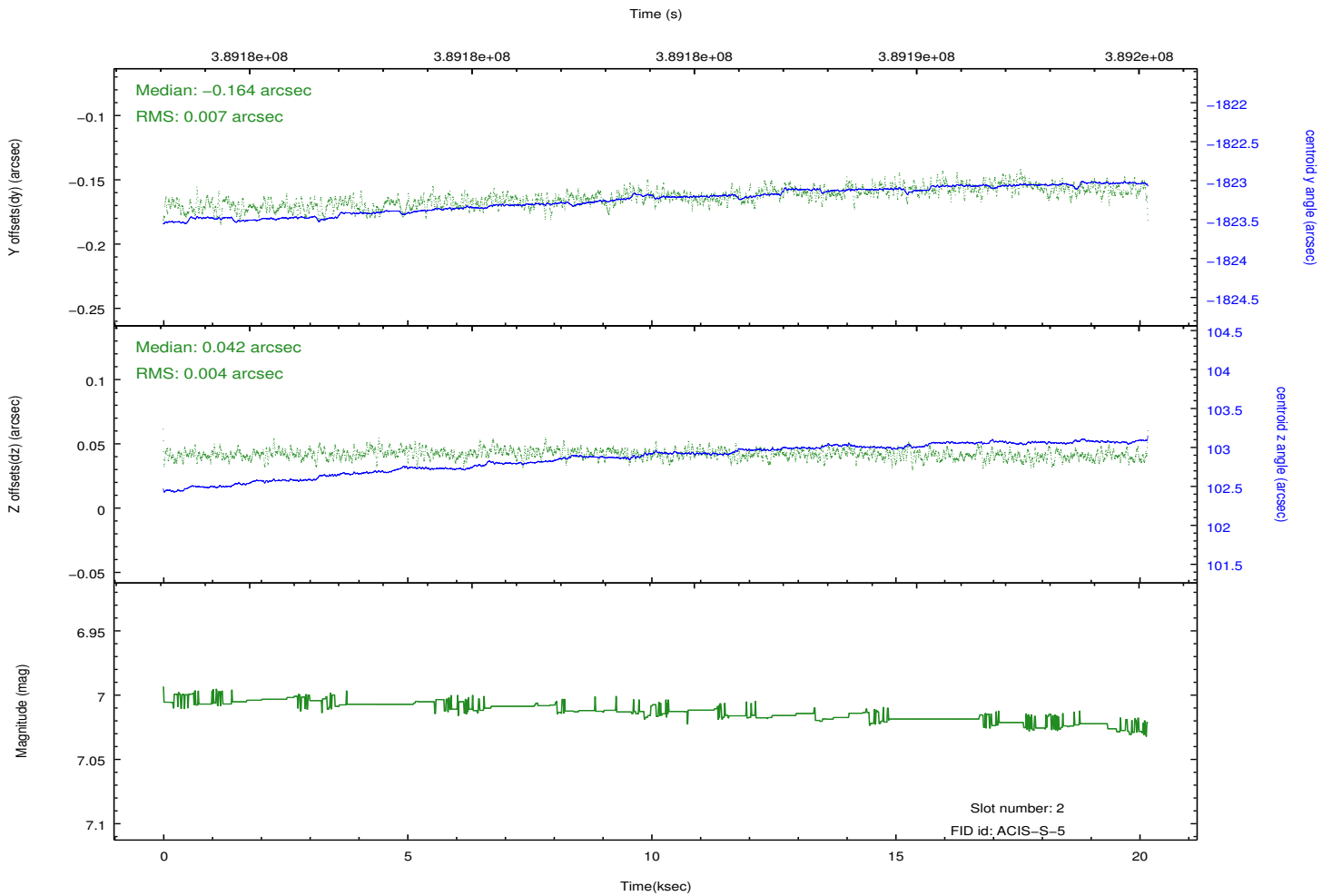
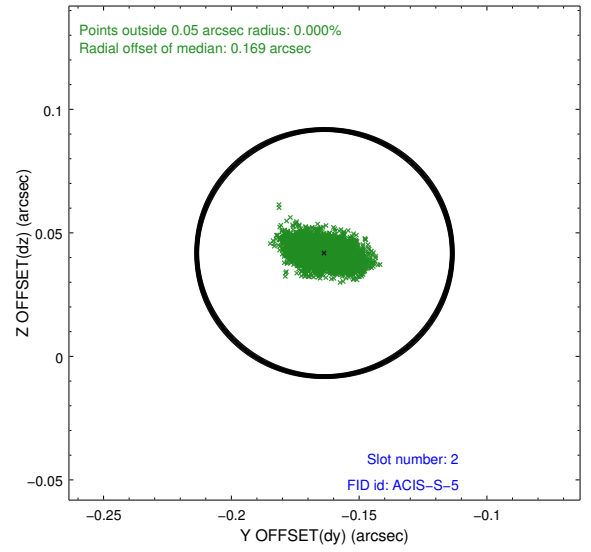
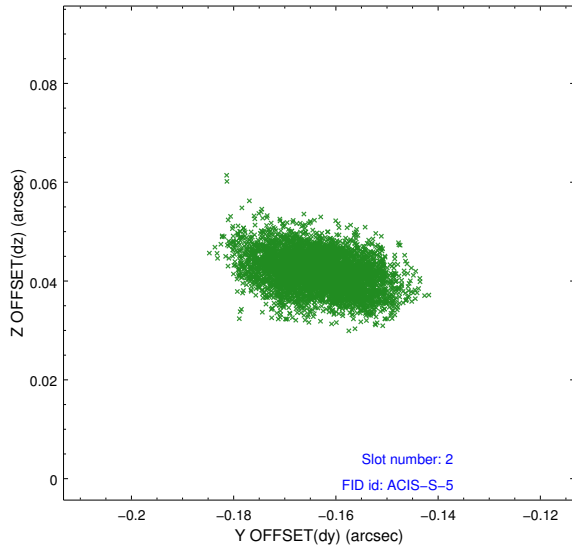
2.5.1 Slot 0



2.5.2 Slot 1



2.5.3 Slot 2



A Summary

A.1 Status

V&V Scientist	Jen Lauer
V&V Date (YYYY-MM-DD)	2012.07.02
V&V Edition	1
V&V Disposition and Status	OK
V&V Charge Time	20.1717001

A.2 Comments