

V&V Reference Report

L2 ASCDS Version : 8.4.3

Observation 12399 - L2 Version 4
Chandra X-Ray Center

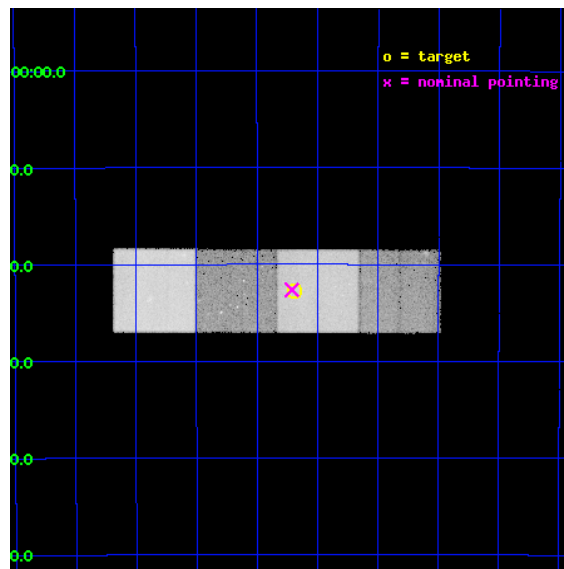
L2 Processing Date : Apr 5 2012

Contents

1	Front	2
2	OBI	3
2.1	OBI	3
2.1.1	Images	3
2.1.2	Bias	3
2.1.3	Parameters	4
2.1.4	Events	4
2.2	Compared Parameters	5
2.3	Aspect	6
2.4	Star Slots	9
2.4.1	Slot 3	9
2.4.2	Slot 4	10
2.4.3	Slot 5	11
2.4.4	Slot 6	12
2.4.5	Slot 7	13
2.5	FID Slots	14
2.5.1	Slot 0	14
2.5.2	Slot 1	15
2.5.3	Slot 2	16
A	Summary	17
A.1	Status	17
A.2	Comments	17

1 Front

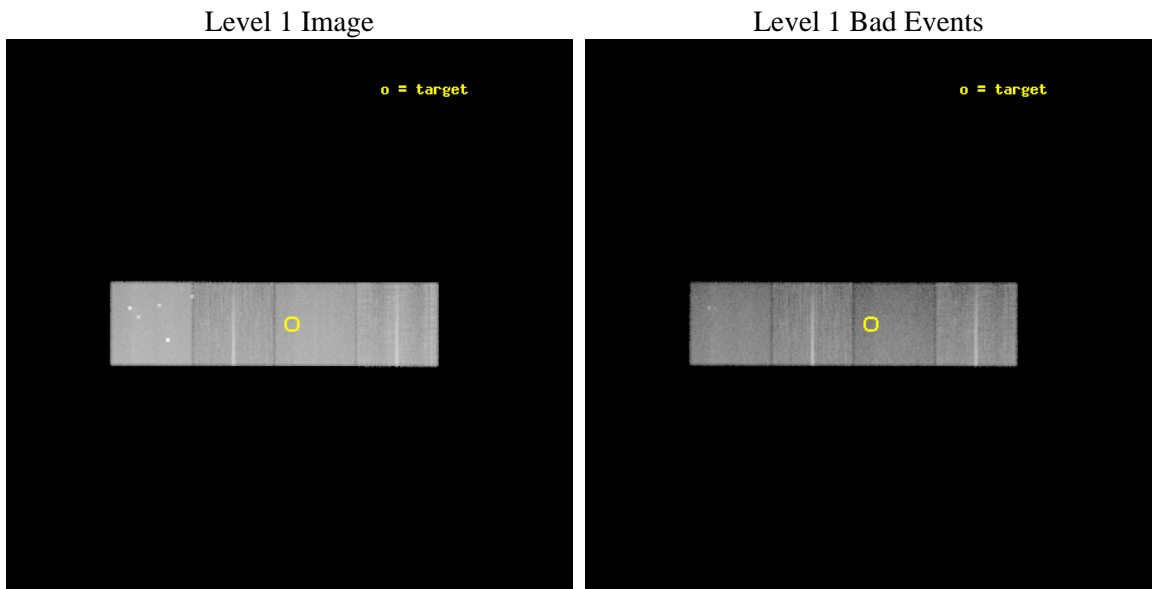
seq_num	300284	Sequence number
obs_id	12399	Observation id
title	The Extended X-ray Emission from the Shell of Recurrent Nova T Pyxidis	Proposal title
observer	Assoc. Prof. Dr. Solen Balman	Principal investigator
object	T Pyxidis	Source name
dtycycle	0	
cycle	P	events from which exps? Prim/Second/Both
ra_targ	136.172917	Observer's specified target RA [deg]
dec_targ	-32.379722	Observer's specified target Dec [deg]
ra_nom	136.17779472662	Nominal RA [deg]
dec_nom	-32.377168144616	Nominal Dec [deg]
roll_nom	0.15923151391735	Nominal Roll [deg]
revision	4	Processing version of data
ontime	35047.505762994	Sum of GTIs [s]
livetime	34589.584298602	Livetime [s]
ontime5	35047.464722991	Sum of GTIs [s]
ontime6	35047.423682988	Sum of GTIs [s]
ontime7	35047.505762994	Sum of GTIs [s]
ontime8	35044.241622806	Sum of GTIs [s]
l2events	370398	Number of level 2 events



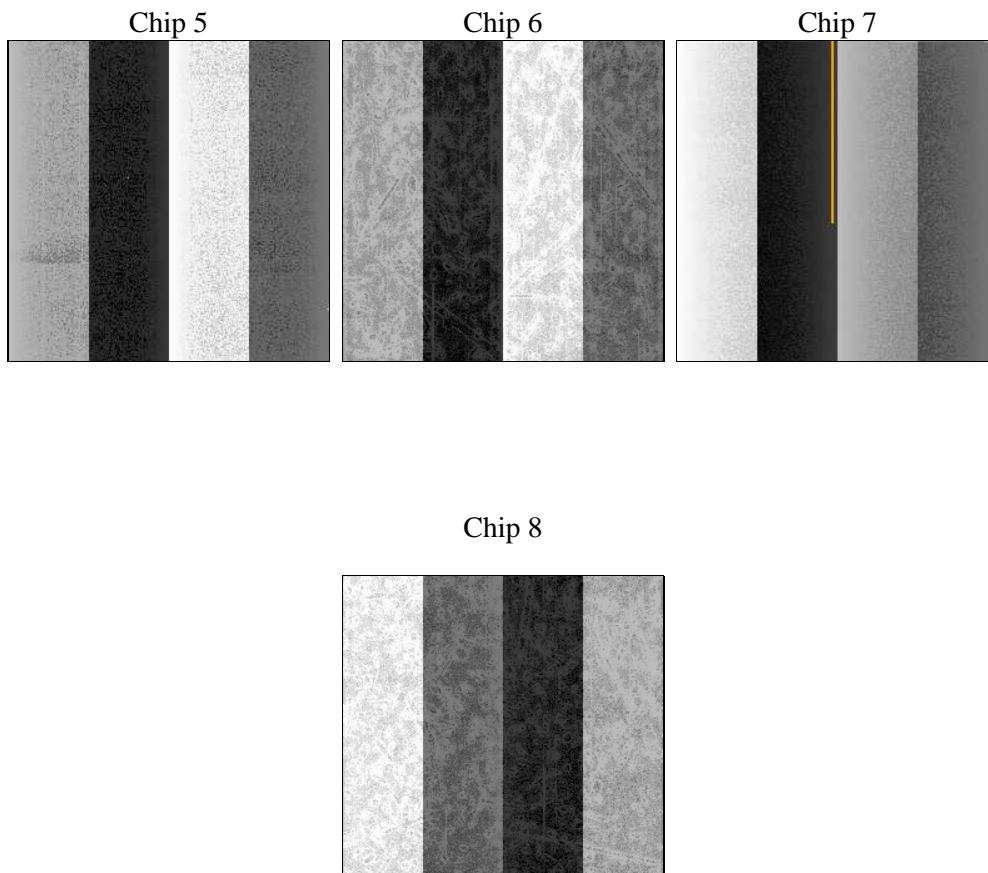
2 OBI

2.1 OBI

2.1.1 Images



2.1.2 Bias



2.1.3 Parameters

obi_num	0	Obi number	sched_exp_time	35000.000000	[s] Scheduled observation exposure time
ascdsver	8.4.3.1	Processing system revision	ontime	35047.505762994	Sum of GTIs [s]
caldsver	4.4.9	 	ontime5	35047.464722991	Sum of GTIs [s]
date	2012-04-04T19:11:57	Date and time of file creation	ontime6	35047.423682988	Sum of GTIs [s]
revision	4	Processing version of data	ontime7	35047.505762994	Sum of GTIs [s]
			ontime8	35044.241622806	Sum of GTIs [s]
			l1events	1298710	Number of level 1 events

2.1.4 Events

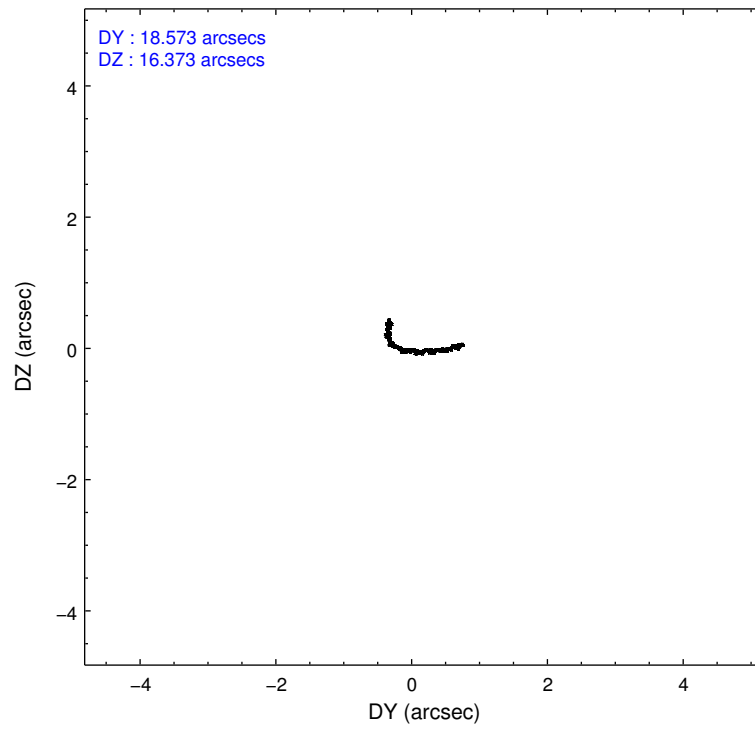
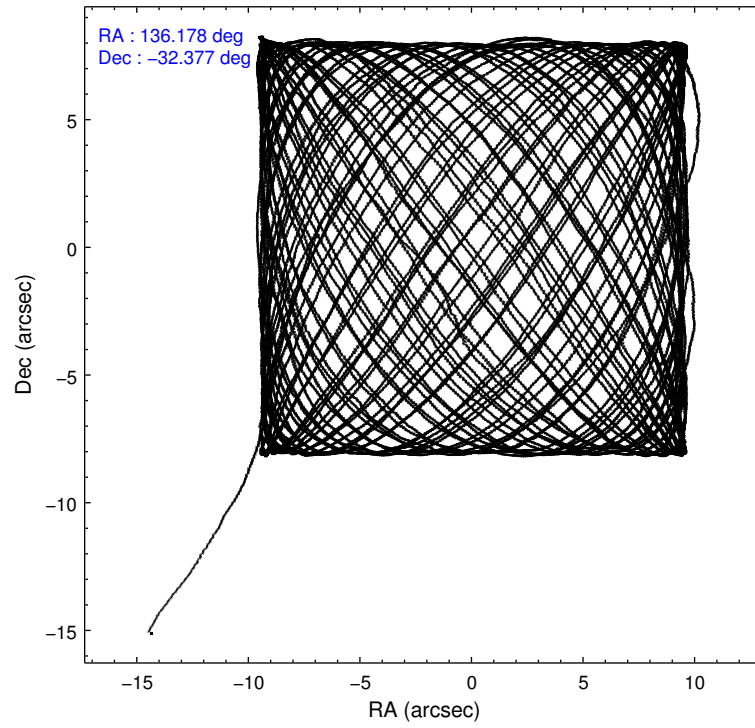
	ccd 5	ccd 6	ccd 7	ccd 8
level 1 events	397771	257005	312606	331328
rejected events	195711	227688	171326	244681
rejected %	49%	88%	54%	73%

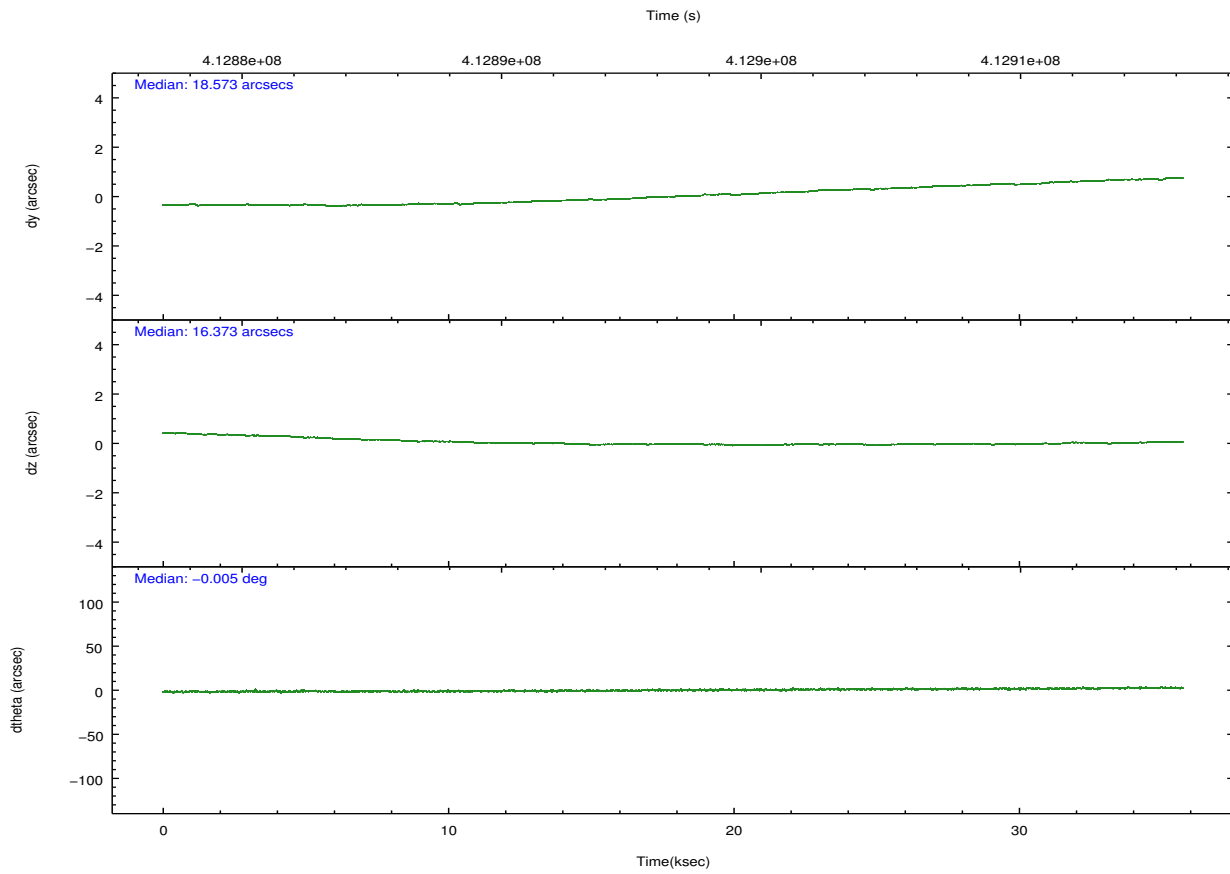
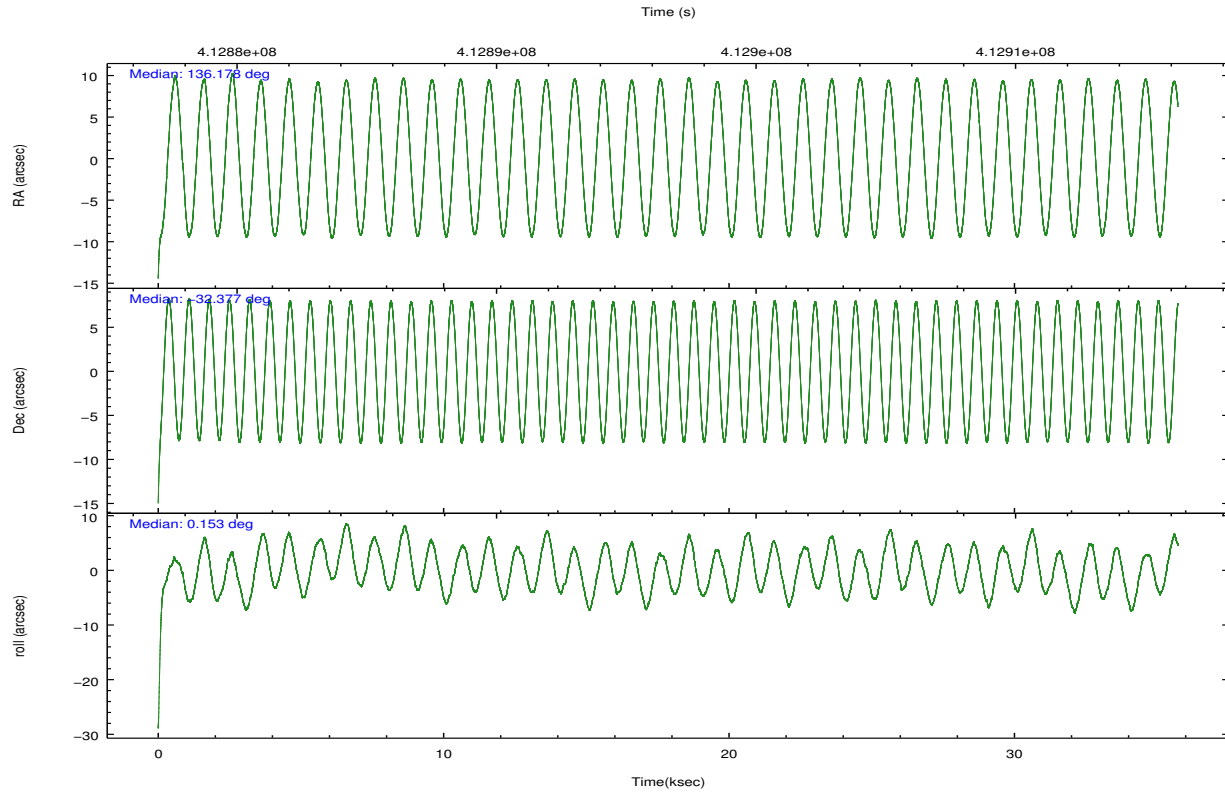
	ccd 5	ccd 6	ccd 7	ccd 8
grade 0 events	29267	10357	12897	24934
	7%	4%	4%	7%
grade 1 events	1087	134	409	268
	0%	0%	0%	0%
grade 2 events	57516	6627	28661	20565
	14%	2%	9%	6%
grade 3 events	7657	2943	12680	9302
	1%	1%	4%	2%
grade 4 events	7484	2942	12646	8521
	1%	1%	4%	2%
grade 5 events	30333	11587	32930	17087
	7%	4%	10%	5%
grade 6 events	100169	6460	74421	23357
	25%	2%	23%	7%
grade 7 events	164258	215955	137962	227294
	41%	84%	44%	68%

2.2 Compared Parameters

Parameter	Planned	Actual	Parameter	Planned	Actual
Instrument	ACIS	ACIS	Obspar format version number	7	7
Detector	ACIS-5678	ACIS-5678	Obspar file type	PREDICTED	ACTUAL
Grating	NONE	NONE	Obspar update status	NONE	UPDATED
Data mode	FAINT	FAINT	Number of optional ACIS chips dropped	0	0
Observation mode	POINTING	POINTING	On-chip summing requested	N	N
[deg] Pointing RA	136.150017	136.177794726617	Subarray requested	NONE	NONE
[deg] Pointing Dec	-32.391223	-32.37716814461578	Alternating exposures requested	N	N
[deg] Pointing Roll	359.987728	0.15923151391735	[s] Primary exposure time	0.000000	3.1
[mm] SIM focus pos	-0.684267	-0.6828225247311905			
[mm] SIM defocus	0	0.001444936568705701			
[mm] SIM translation stage pos	-190.132523	-190.1400660498719			
[mm] SIM translation stage offset	0	0.00754346686406393			
[s] Observation start time (MET)	412879480.184000	412878156.12211			
Observation start date	2011-01-31T16:43:34	2011-01-31T16:22:36			
[s] Observation end time (MET)	412914480.184000	412915276.49903			
Observation end date	2011-02-01T02:26:54	2011-02-01T02:41:16			
Read mode	TIMED	TIMED			

2.3 Aspect



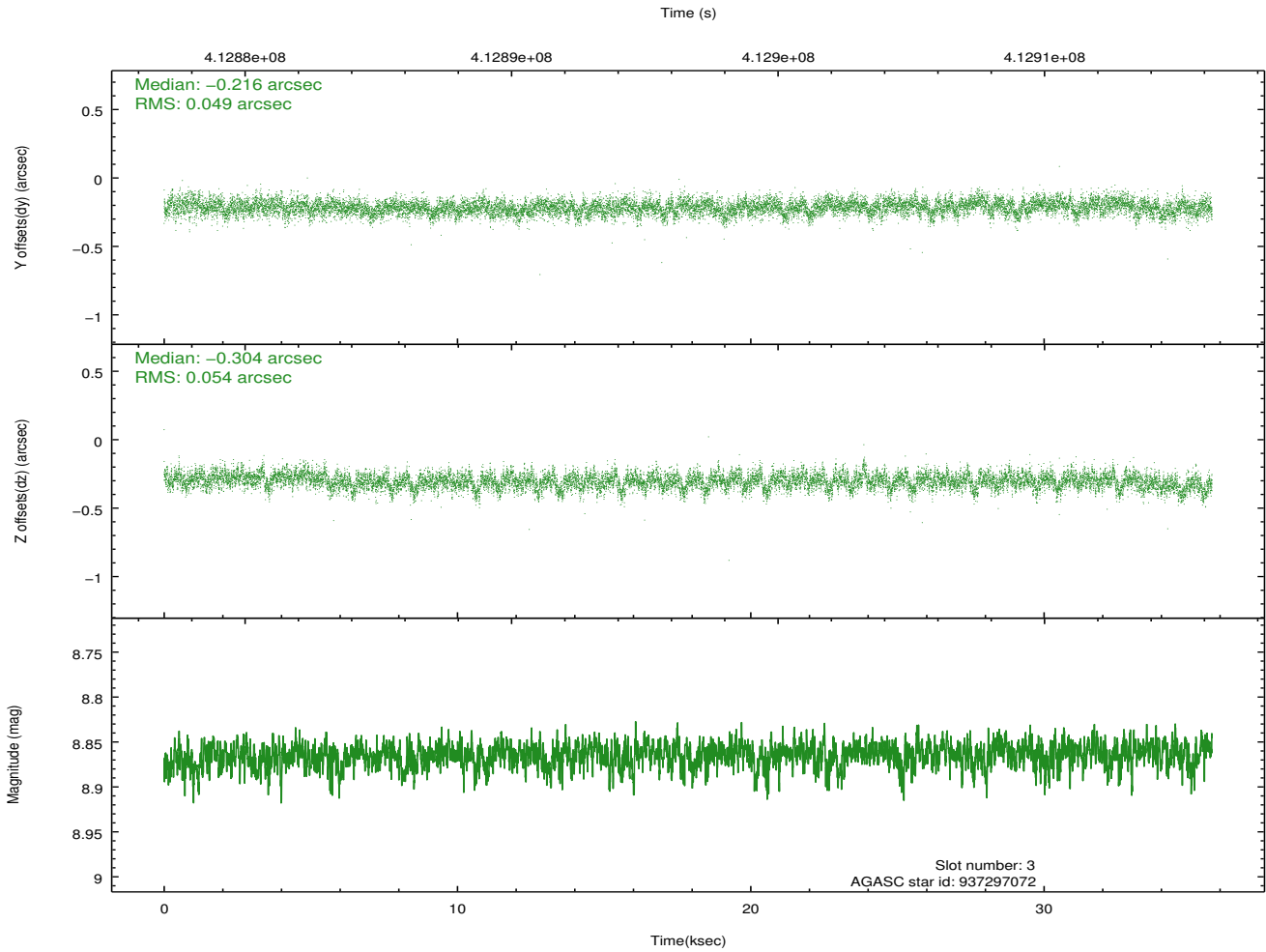
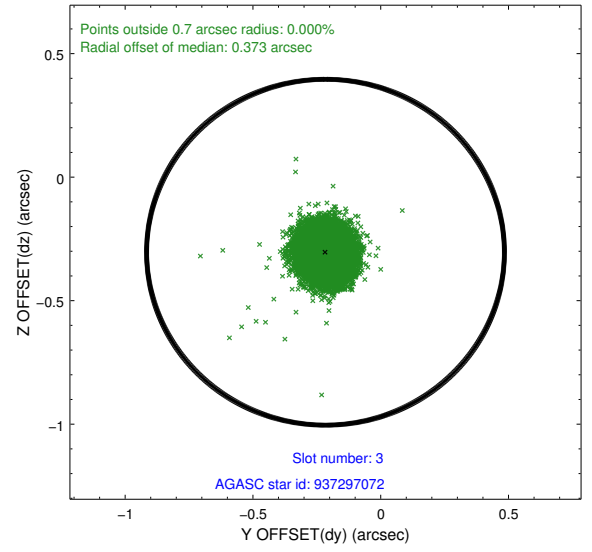
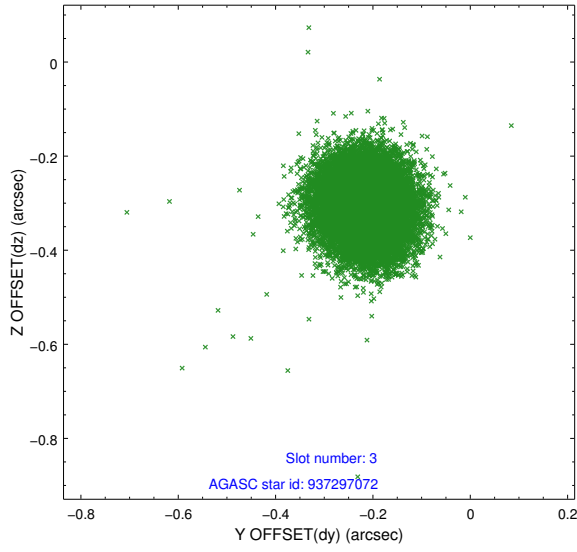


Slot Statistics

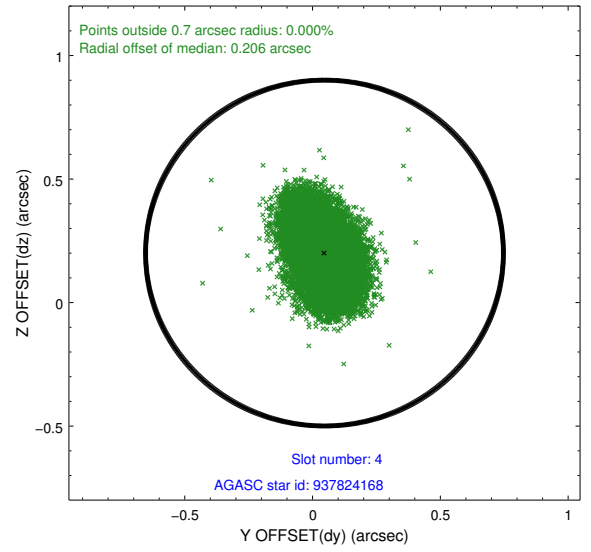
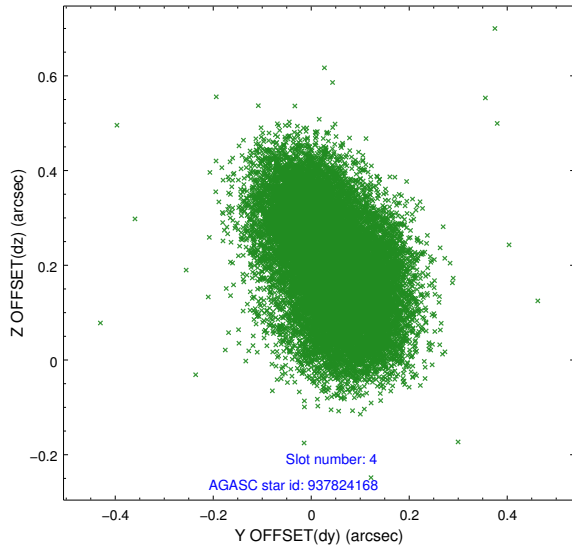
slot	status	id	mag	n_pts	med_dy	med_dz	dr1	dr2	ra	dec	mean_y	mean_z
0	FID	ACIS-S-1	6.96	8714	-0.012	-0.076	0.011	0.016	0.000000	0.000000	924.31	-1733.56
1	FID	ACIS-S-4	6.97	8715	0.102	-0.002	0.011	0.017	0.000000	0.000000	2141.85	170.64
2	FID	ACIS-S-6	7.11	8714	-0.113	0.088	0.010	0.024	0.000000	0.000000	390.19	808.13
3	GUIDE	937297072	8.86	17416	-0.216	-0.304	0.076	0.125	136.754791	-31.833481	1849.25	2003.14
4	GUIDE	937824168	9.28	17292	0.047	0.200	0.144	0.225	135.922945	-32.911857	-685.24	-1874.77
5	GUIDE	937826768	8.72	17401	-0.013	0.187	0.090	0.143	135.967374	-32.659484	-553.00	-966.17
6	GUIDE	937829280	8.88	17408	0.121	-0.206	0.085	0.141	135.716733	-31.898439	-1325.01	1771.06
7	GUIDE	937839048	9.37	17405	0.074	0.126	0.153	0.237	136.496287	-32.832453	1048.28	-1589.45

2.4 Star Slots

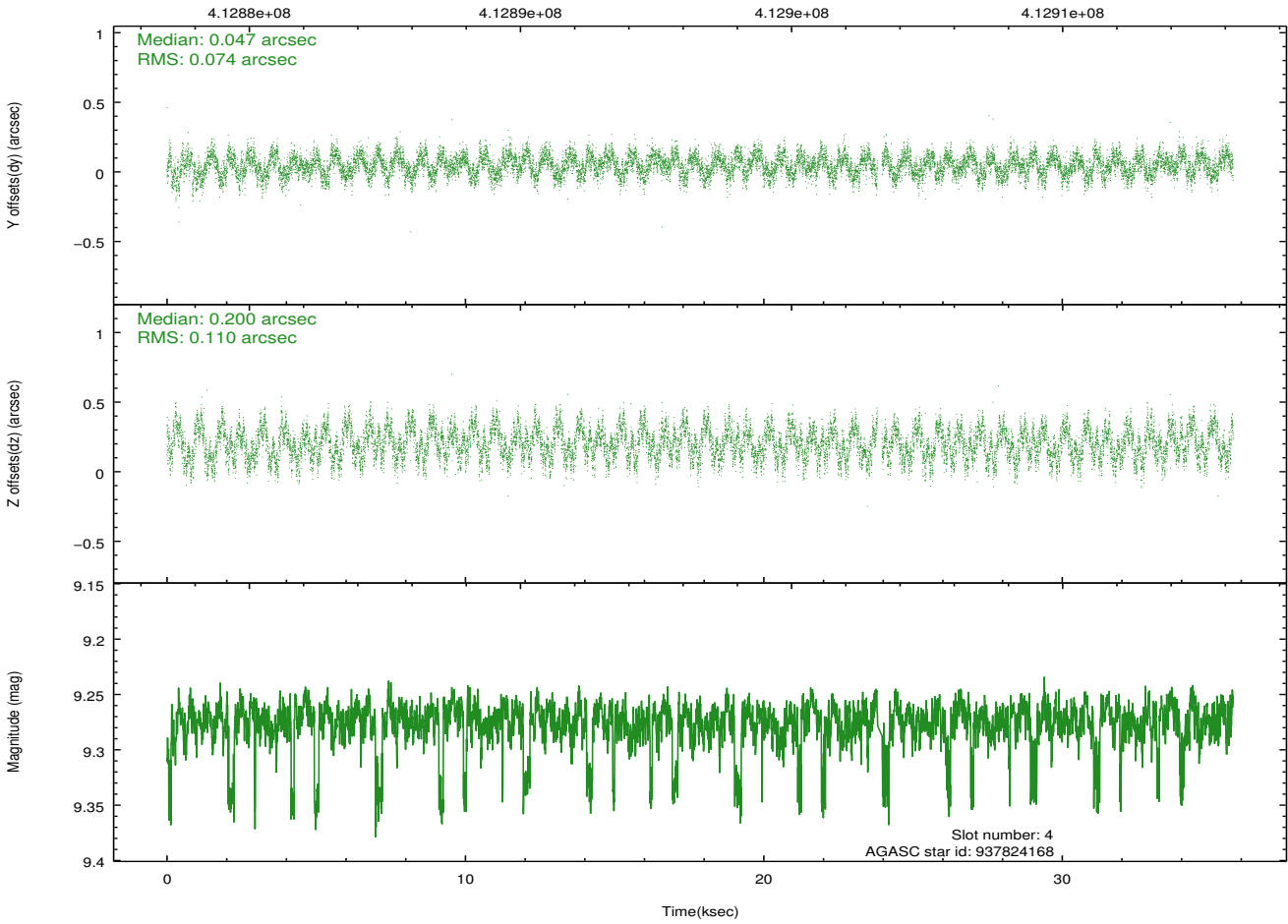
2.4.1 Slot 3



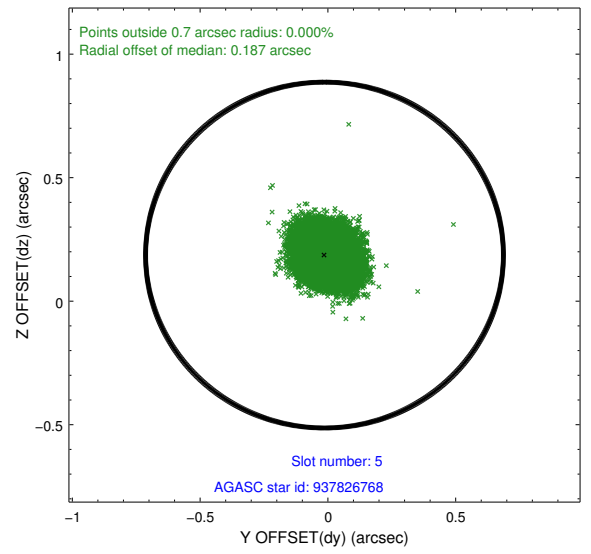
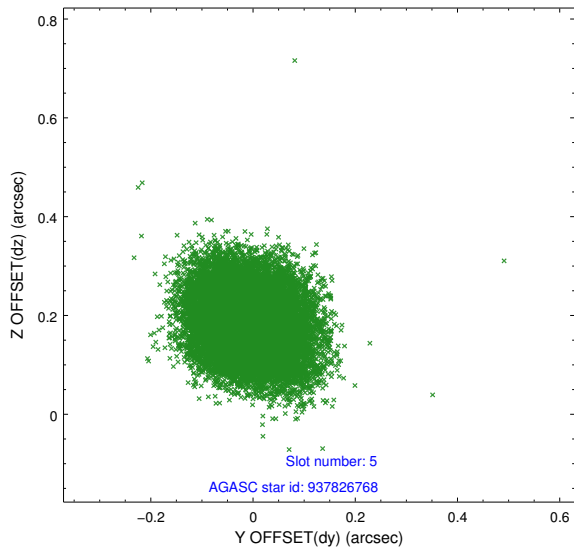
2.4.2 Slot 4



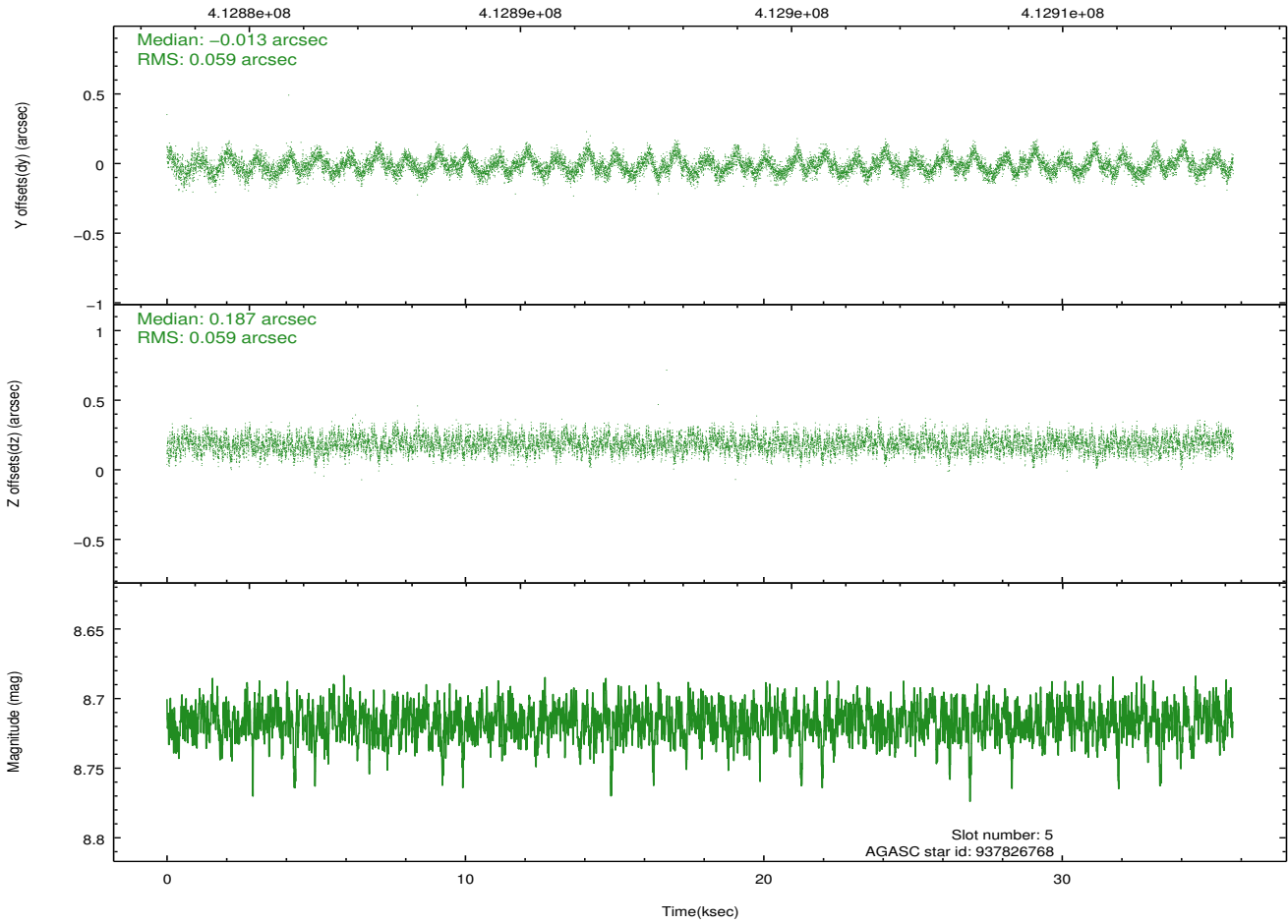
Time (s)



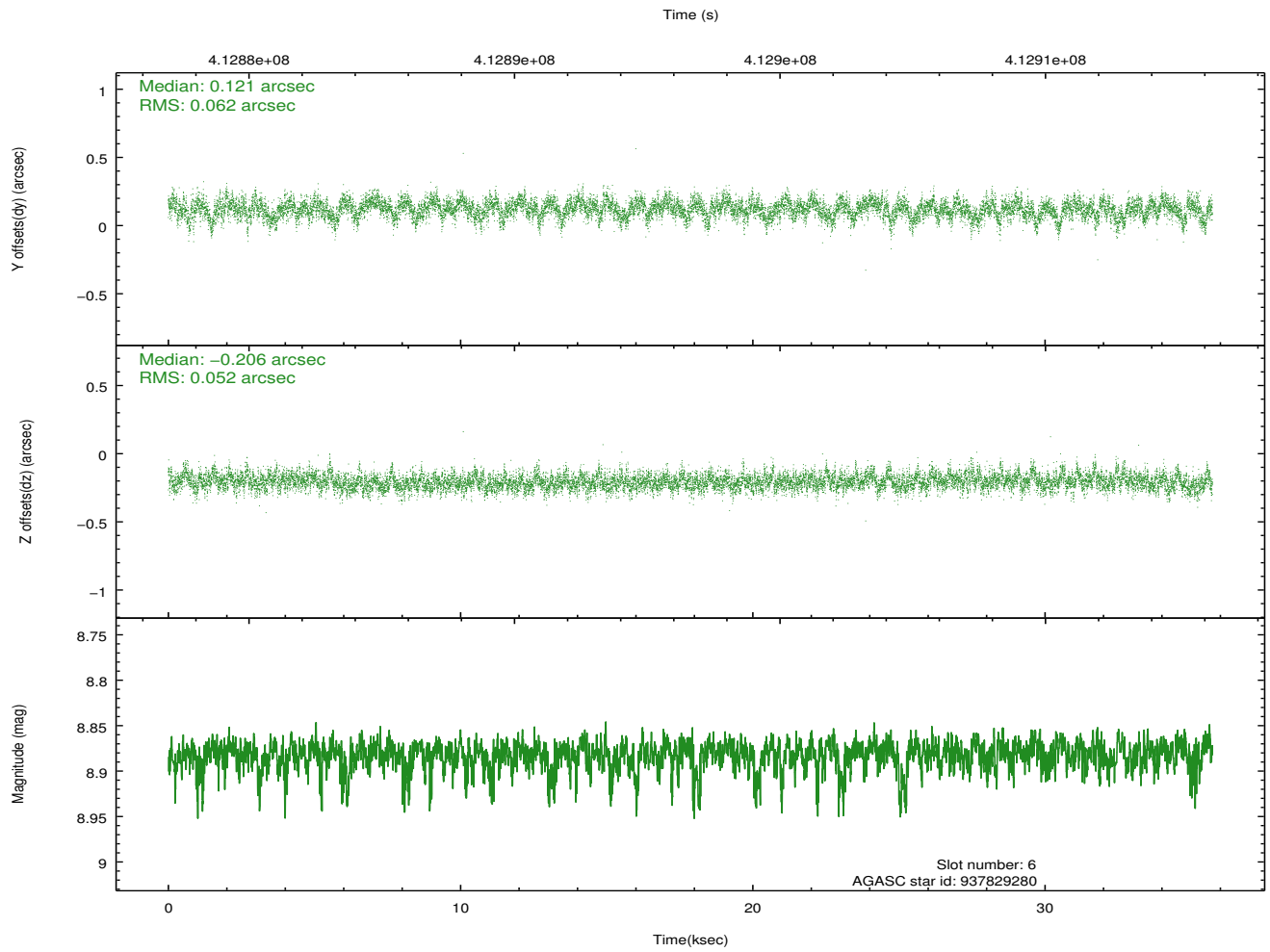
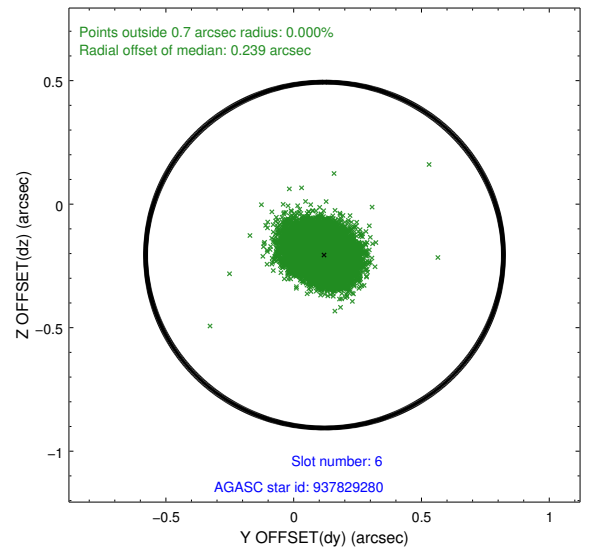
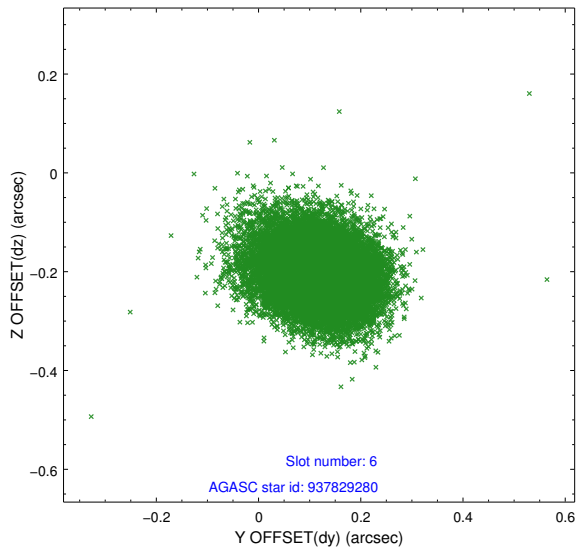
2.4.3 Slot 5



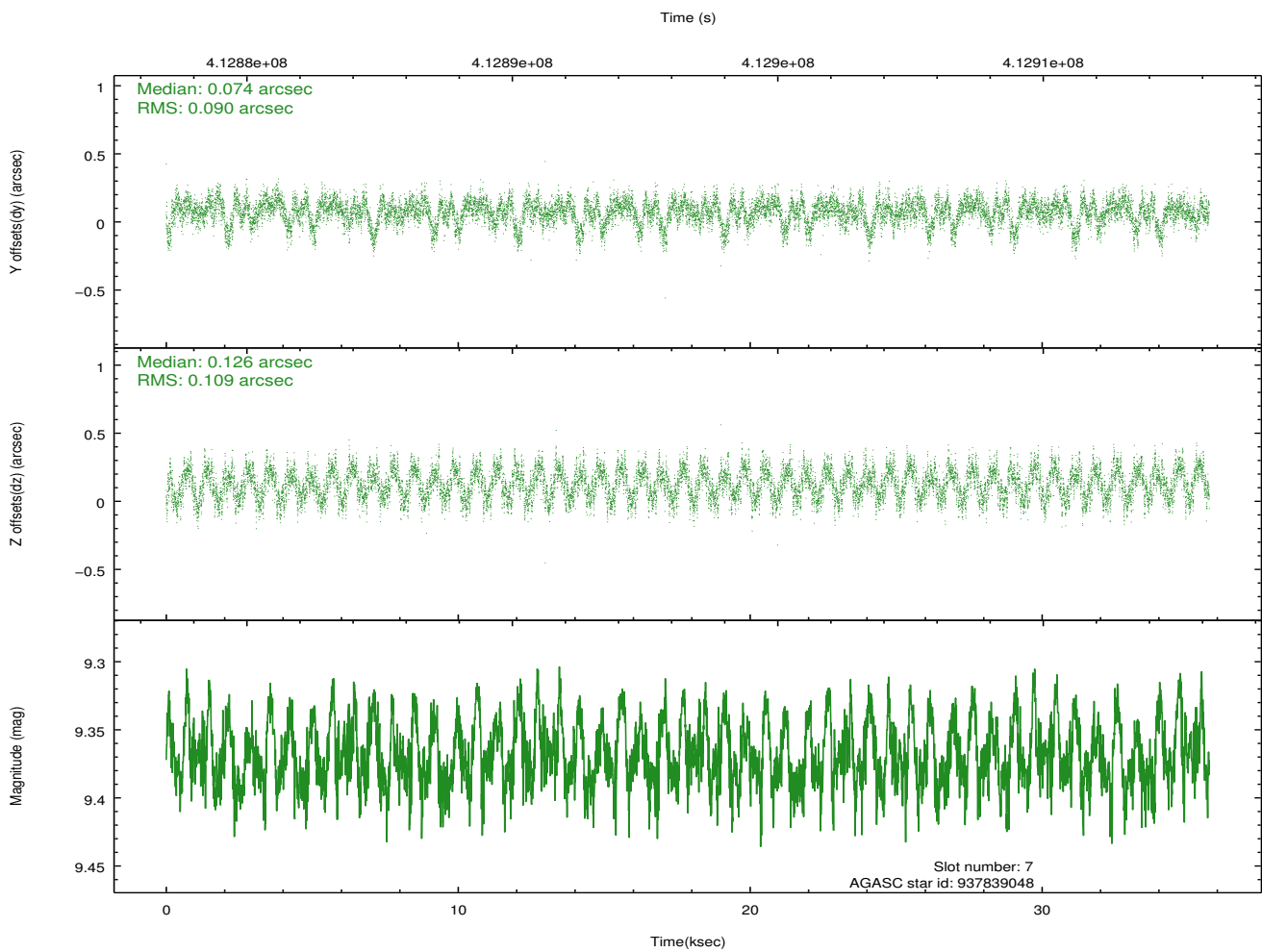
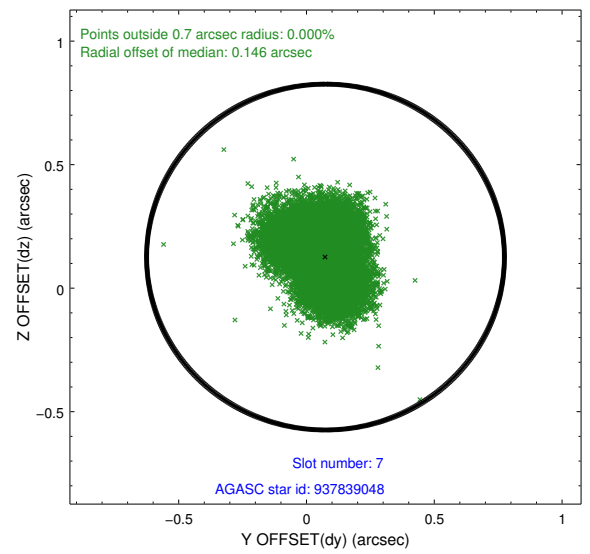
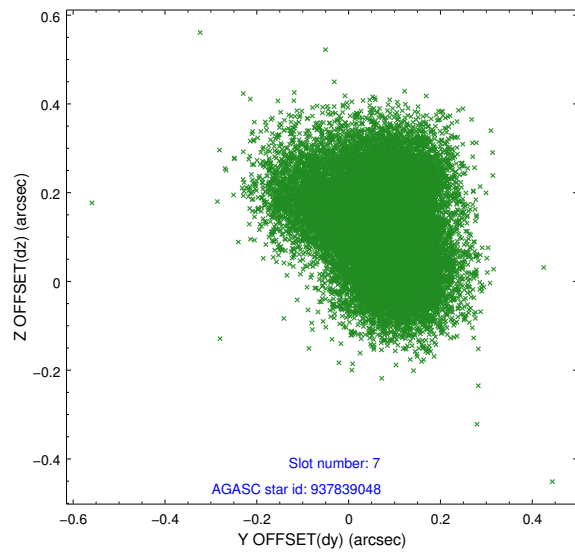
Time (s)



2.4.4 Slot 6

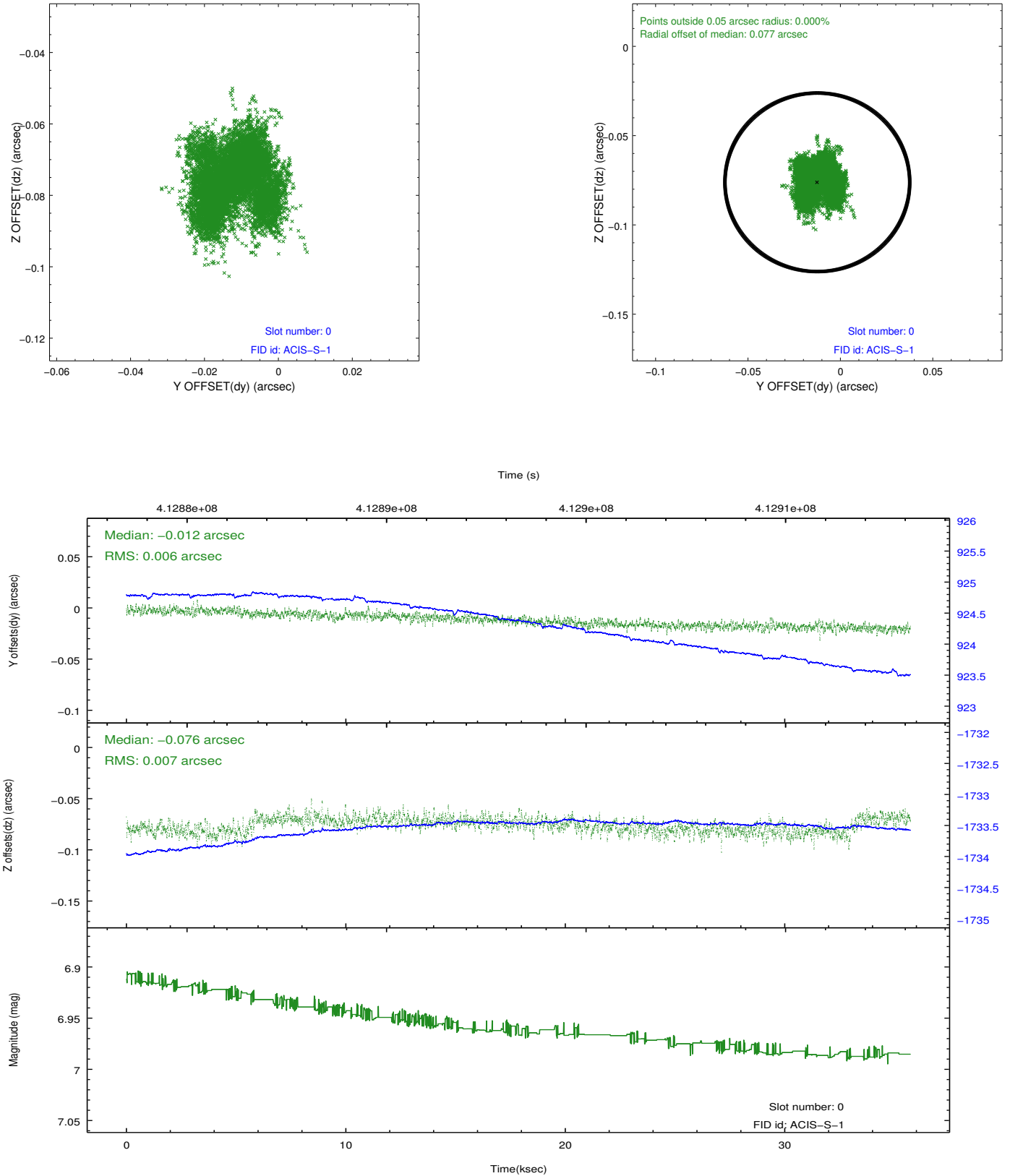


2.4.5 Slot 7

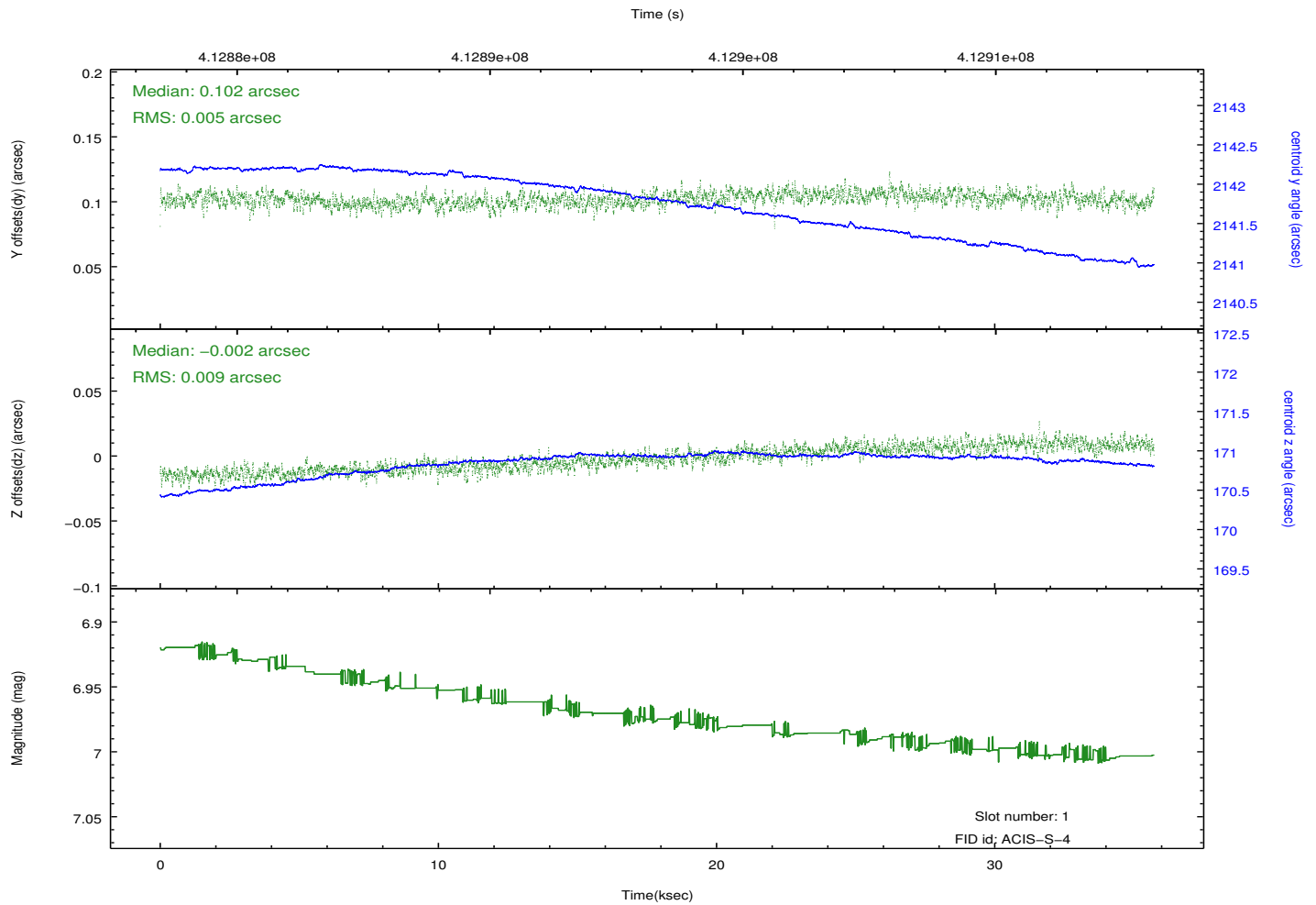
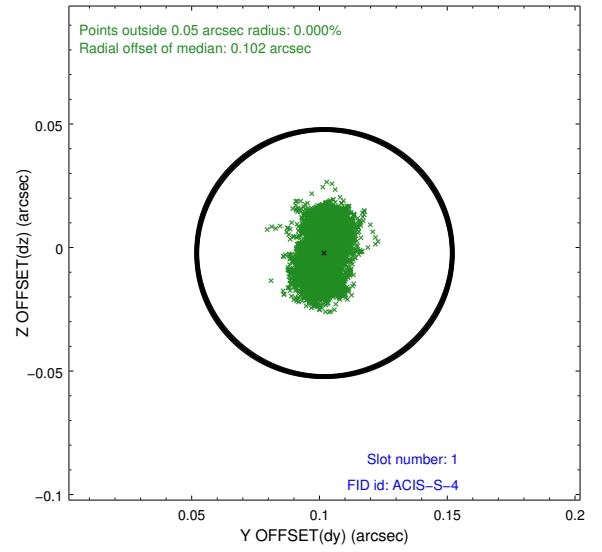
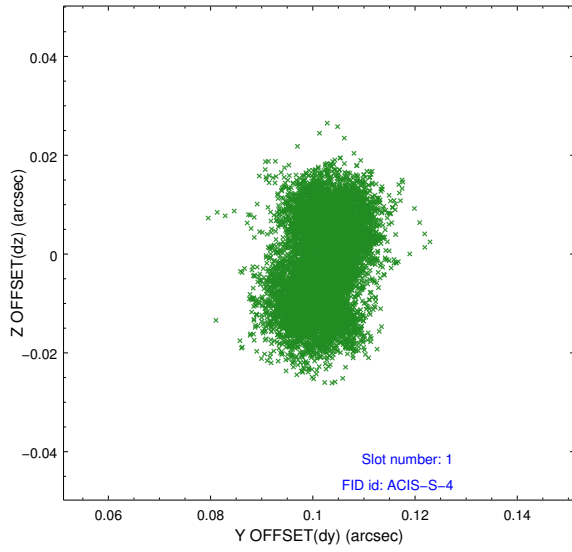


2.5 FID Slots

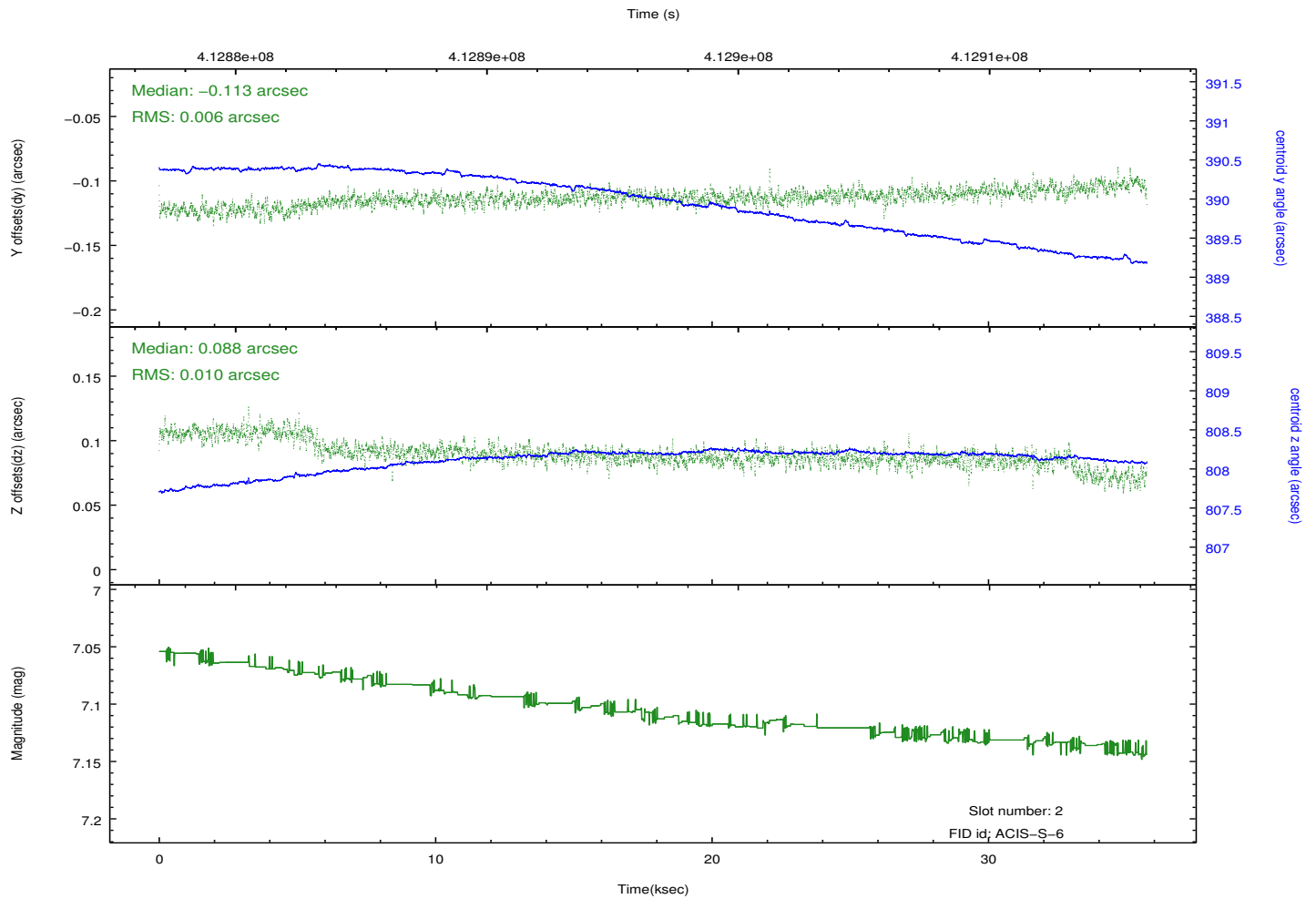
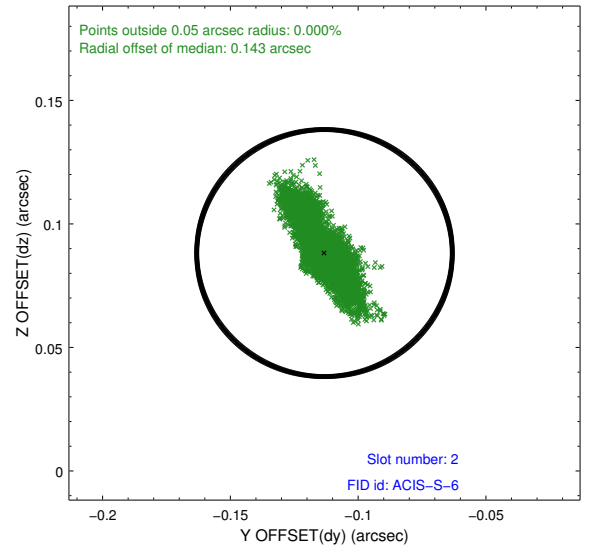
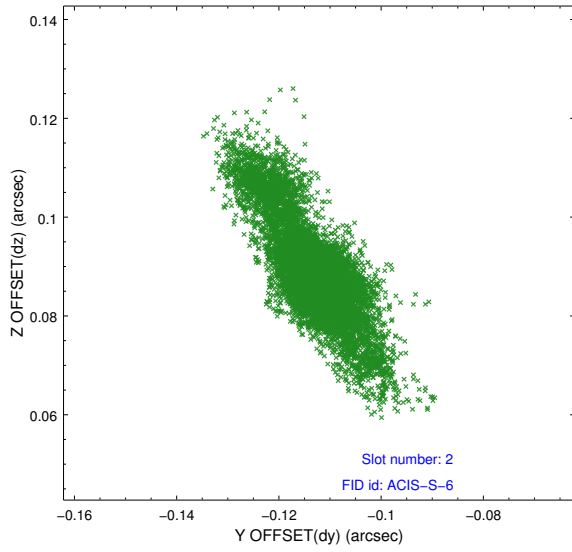
2.5.1 Slot 0



2.5.2 Slot 1



2.5.3 Slot 2



A Summary

A.1 Status

V&V Scientist	Joy Nichols
V&V Date (YYYY-MM-DD)	2012.04.05
V&V Edition	1
V&V Disposition and Status	OK
V&V Charge Time	35.047505760074

A.2 Comments

These data products (version 4) were reprocessed to correct 2 separate errors in application of calibration files in versions 2 and 3 for this obsid.